

Monthly Energy & Economic Overview

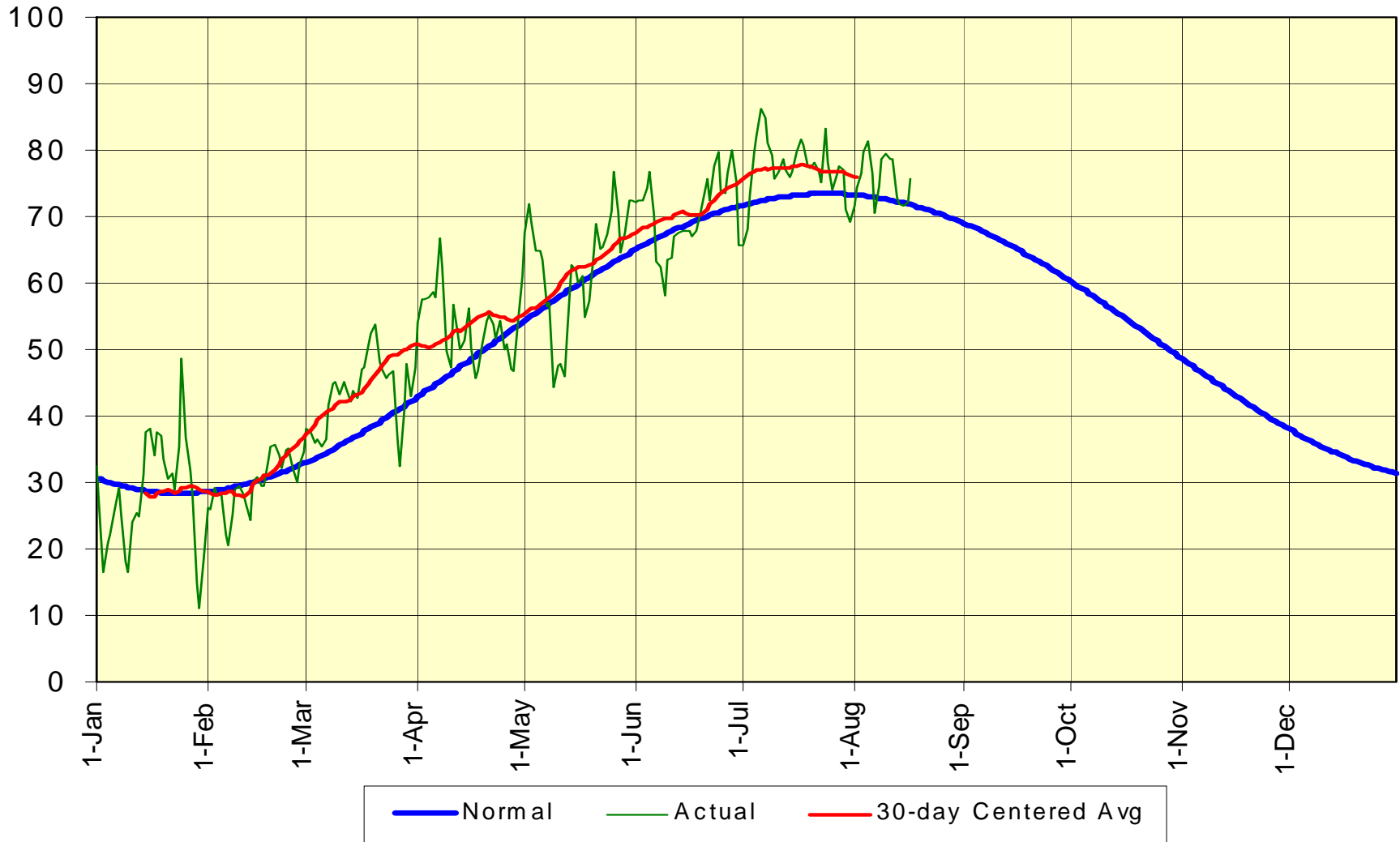
**Presented to
LFTF on August 26, 2010**

**Arthur Maniaci
System & Resource Planning**

Summary

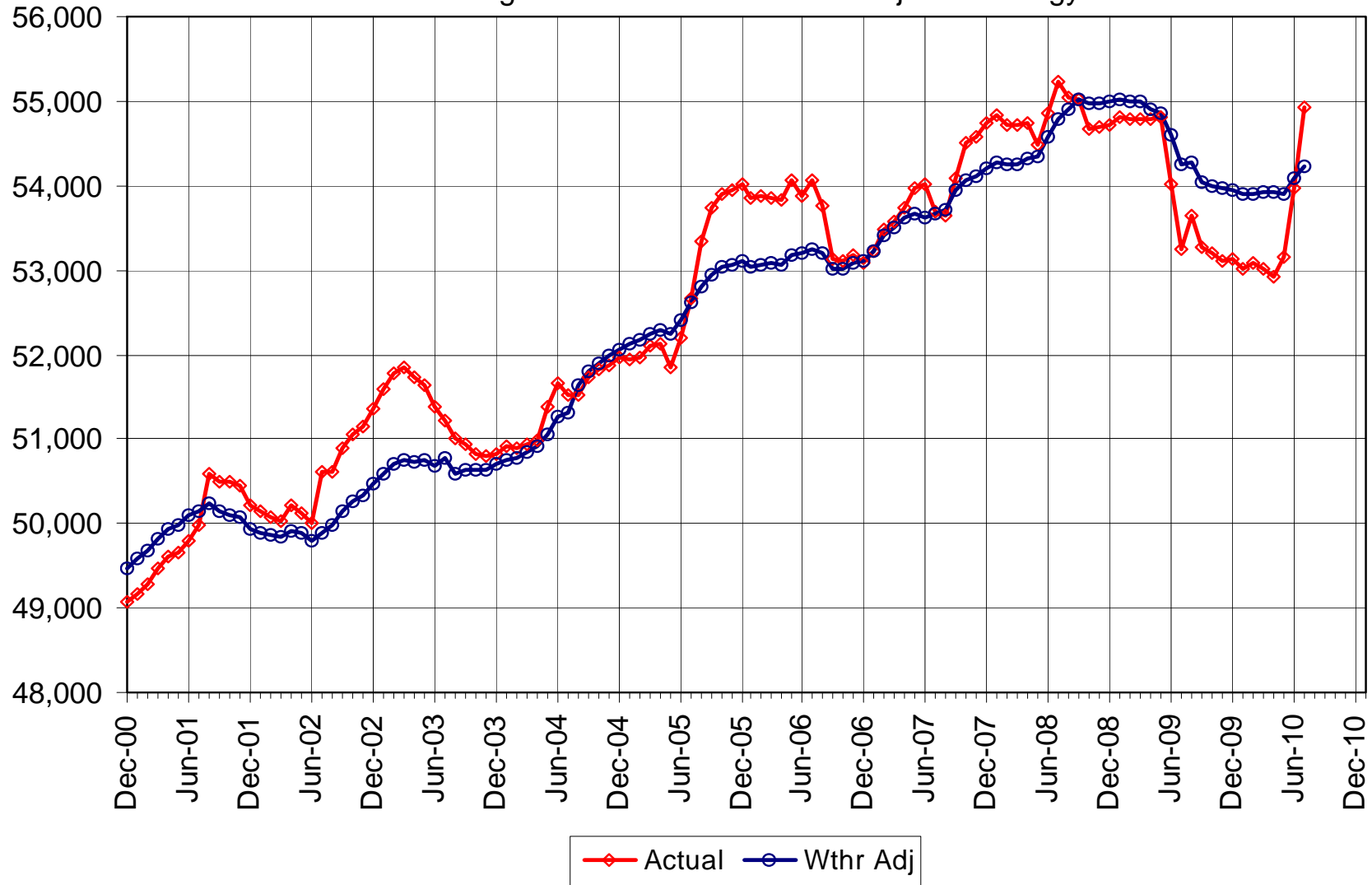
- ◆ Actual & weather-normalized energy charts help explain usage trends, after allowing for above- or below-normal weather conditions.
- ◆ Results show impact of warm weather this summer, and an increase in usage after adjusting for weather. The adjusted increase in usage is attributable in part to economic recovery. Coincident economic indicators continue to show monthly increases (see Slide 13 references).

Average Daily Temperature - Normal vs 2010 NYCA System-Wide Temperature



New York City - Actual & Weather Adjusted (GWh)

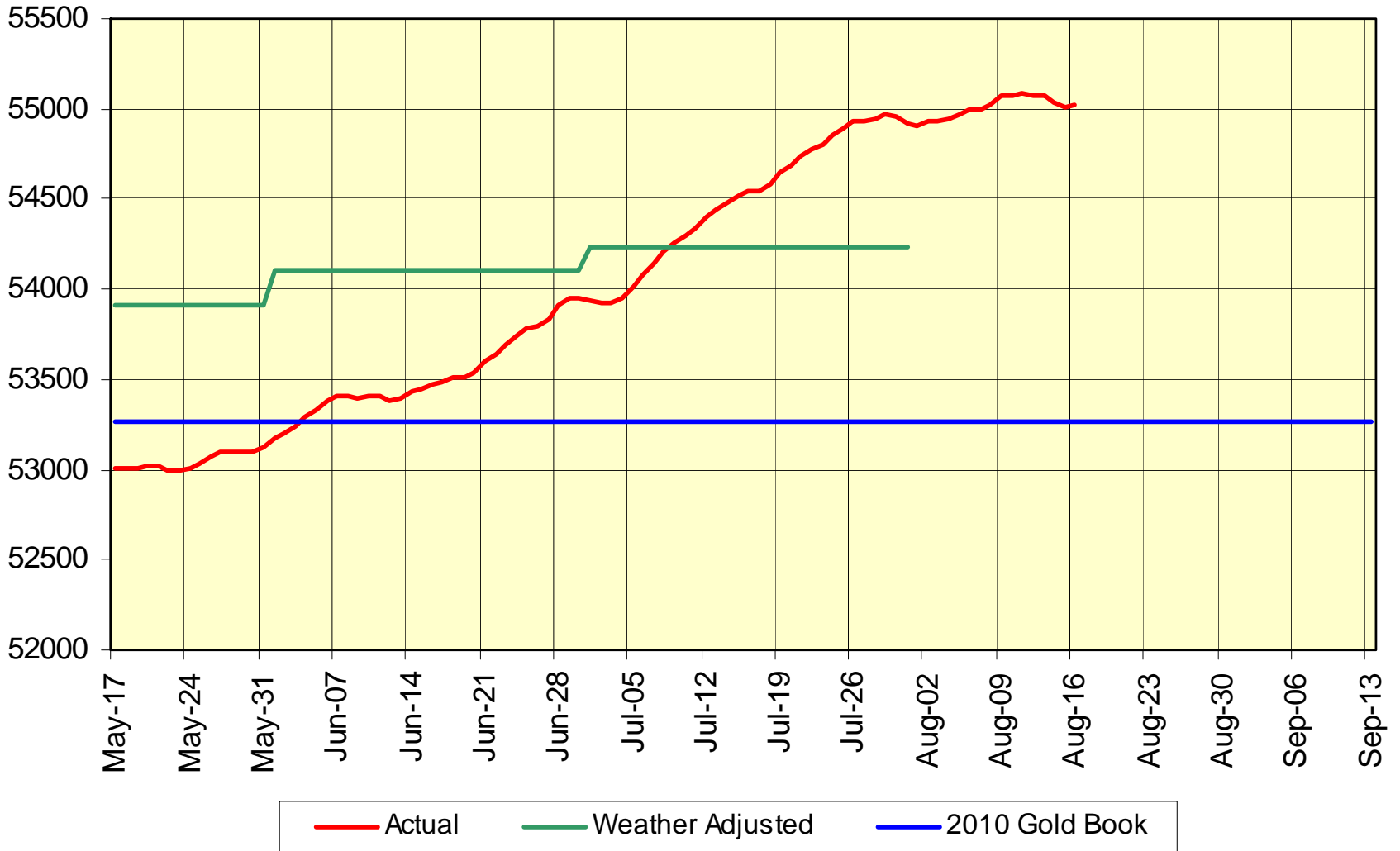
12 month moving sum of actual & weather-adjusted energy



8/16/2010

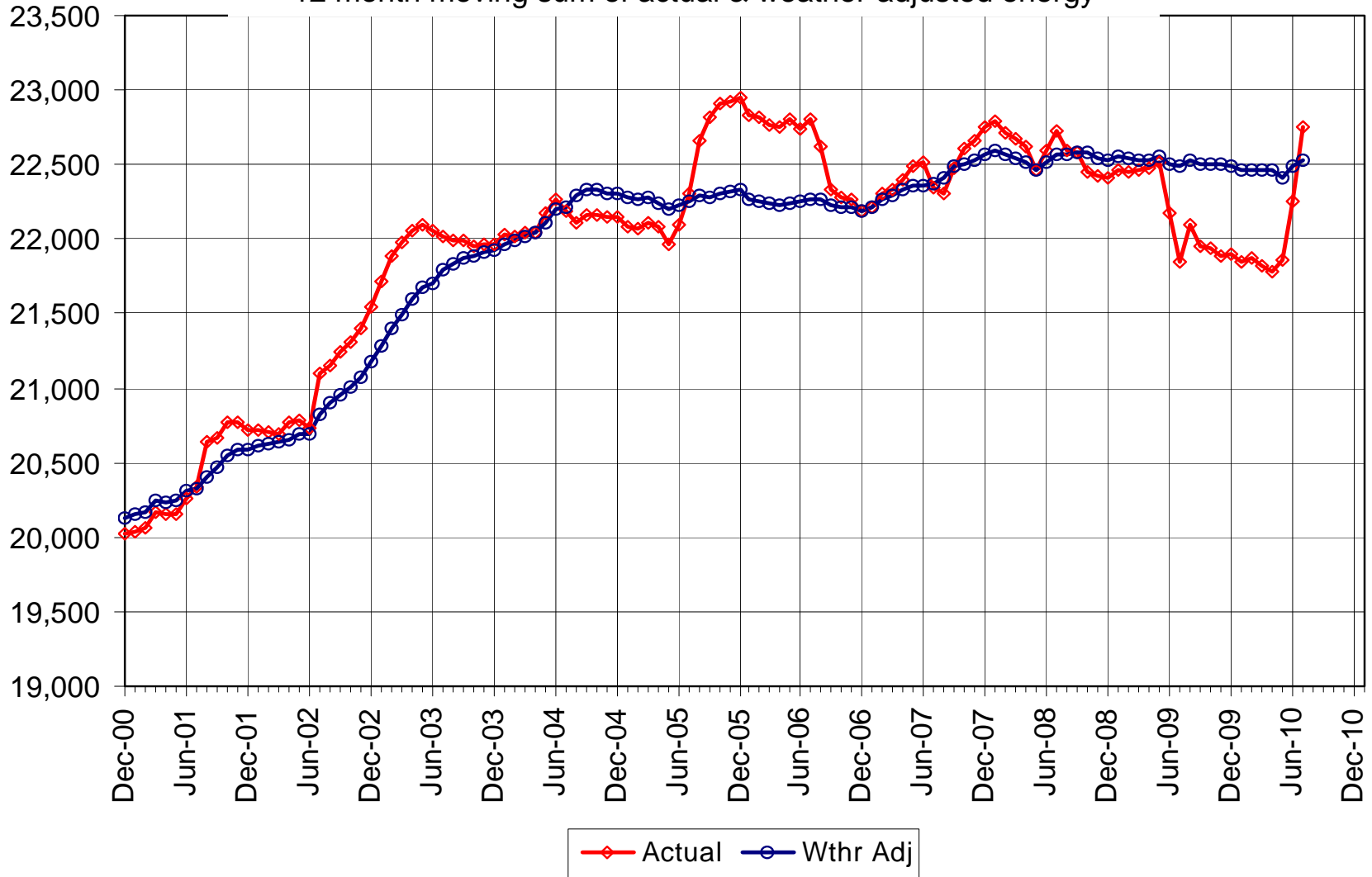
NYC Daily Energy Tracker - GWh

365 Day Moving Sum



Long Island - Actual & Weather Adjusted (GWh)

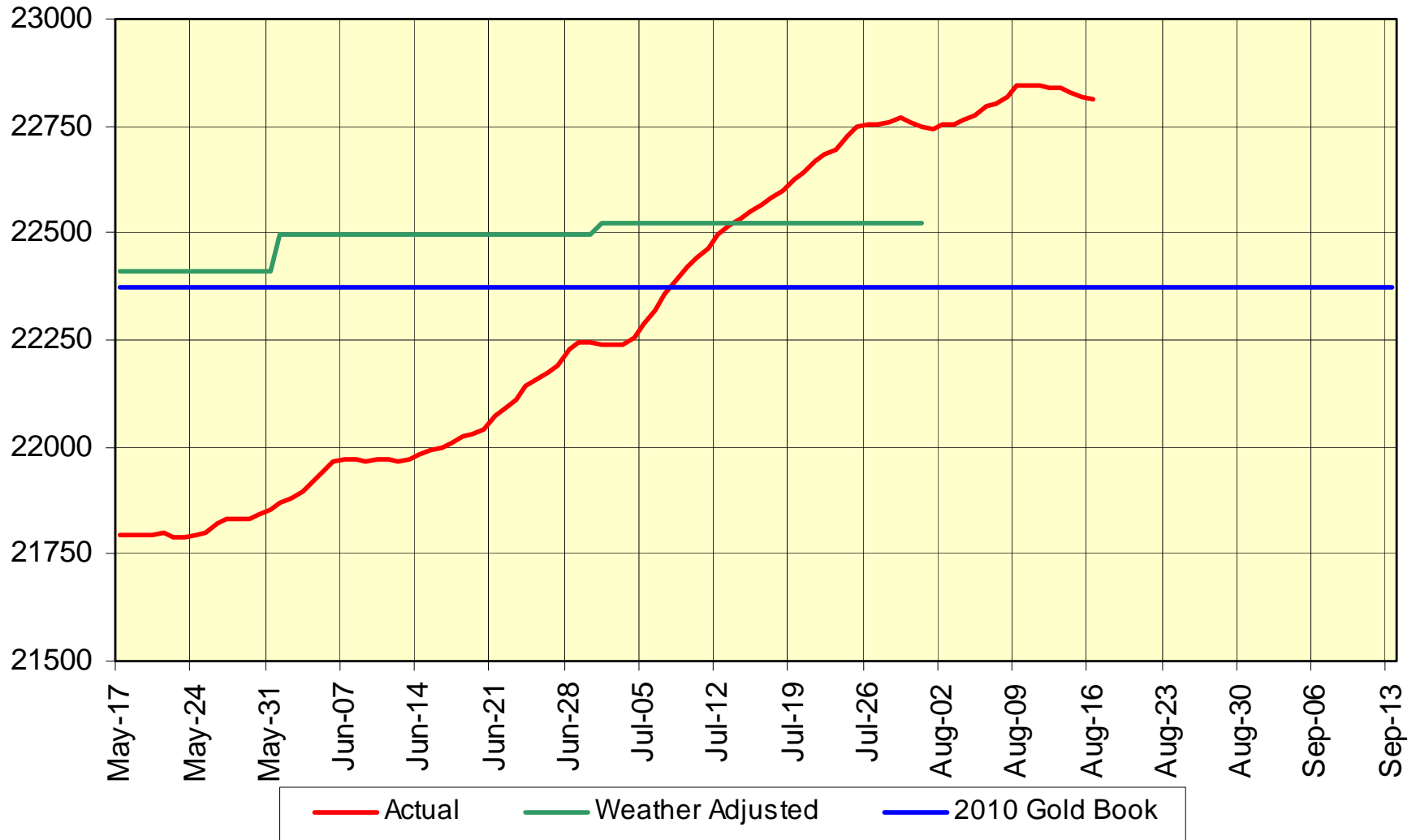
12 month moving sum of actual & weather-adjusted energy



8/16/2010

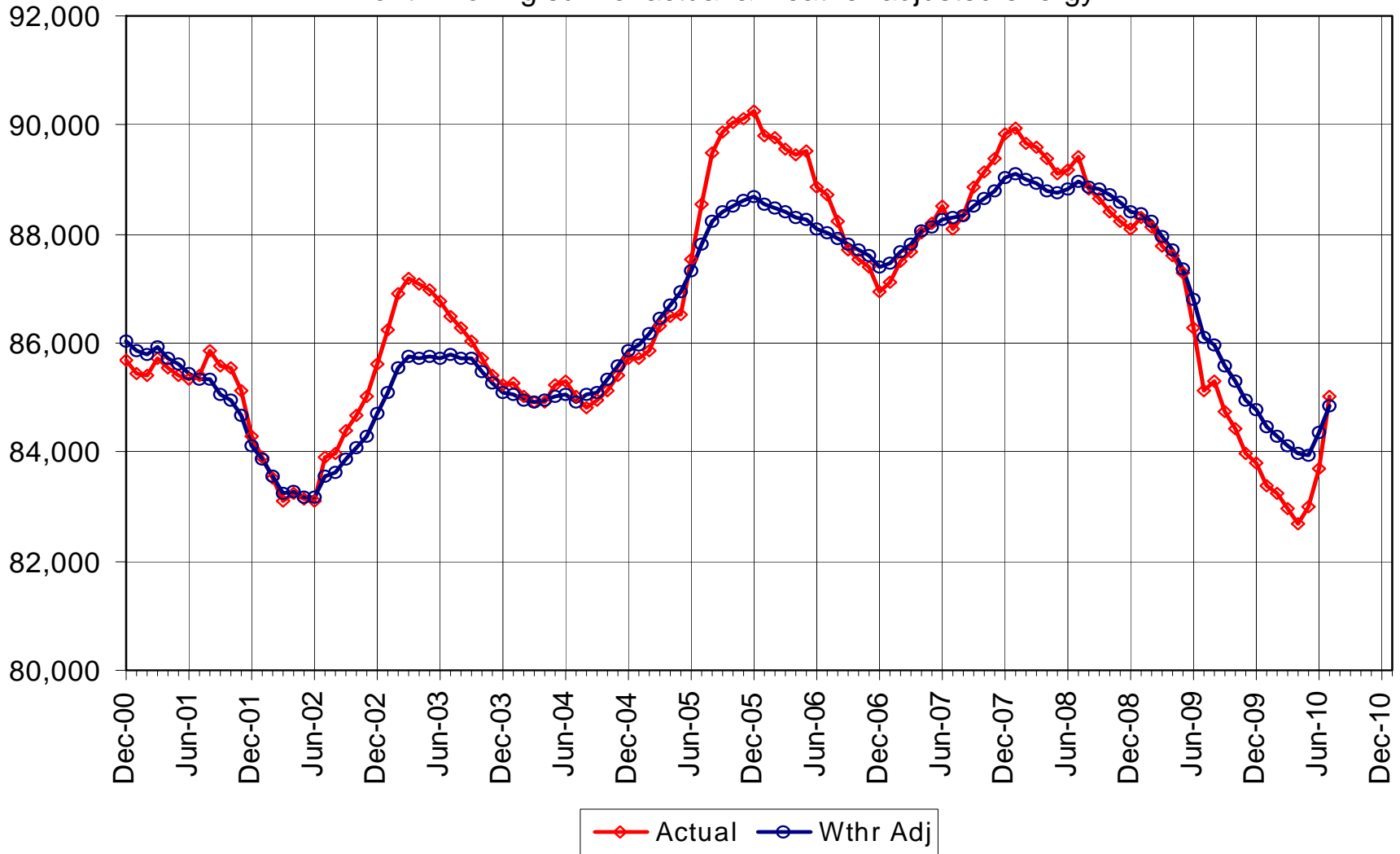
Long Island Daily Energy Tracker - GWh

365 Day Moving Sum



Upstate - Actual & Weather Adjusted (GWh)

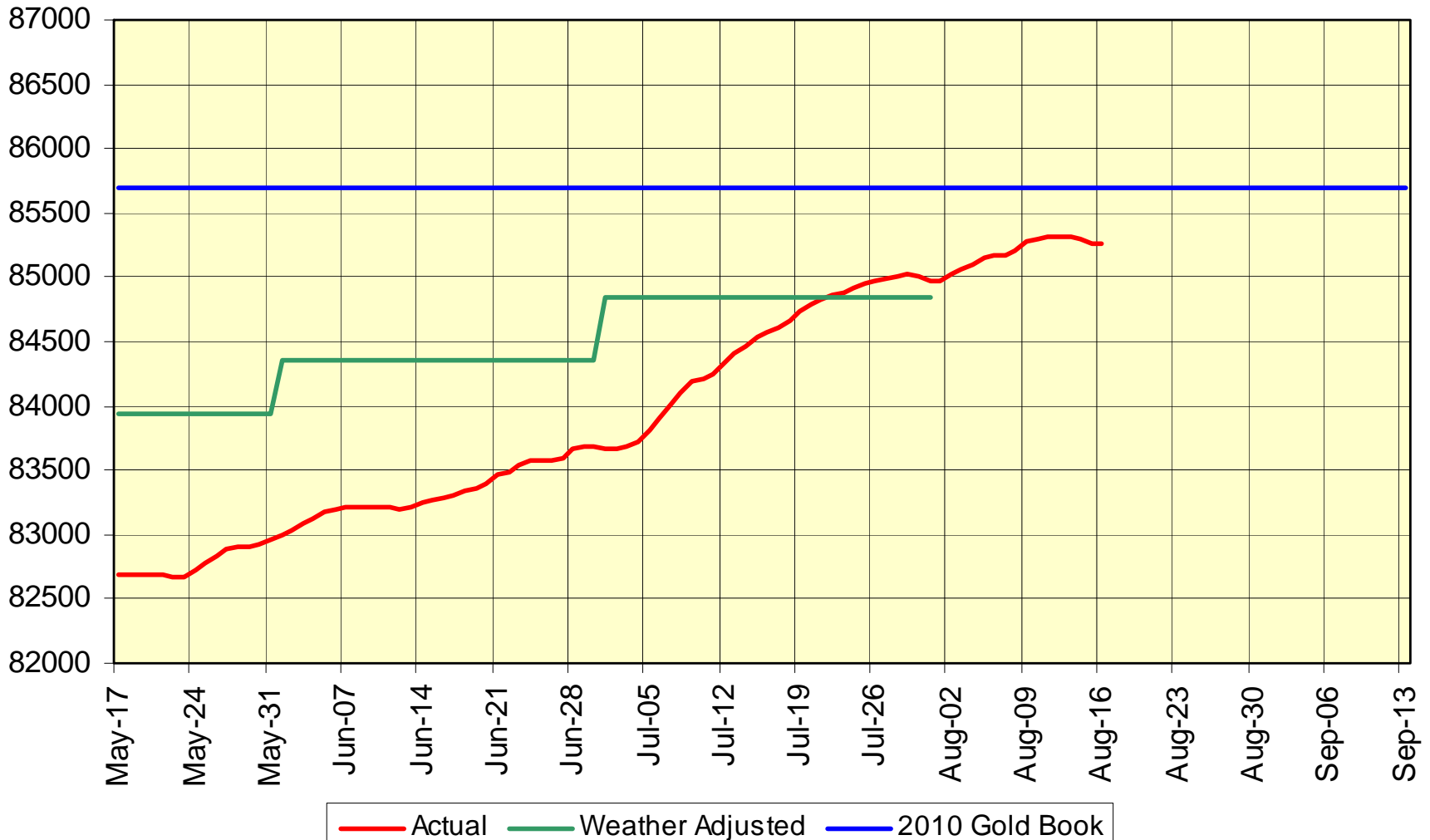
12 month moving sum of actual & weather-adjusted energy



8/16/2010

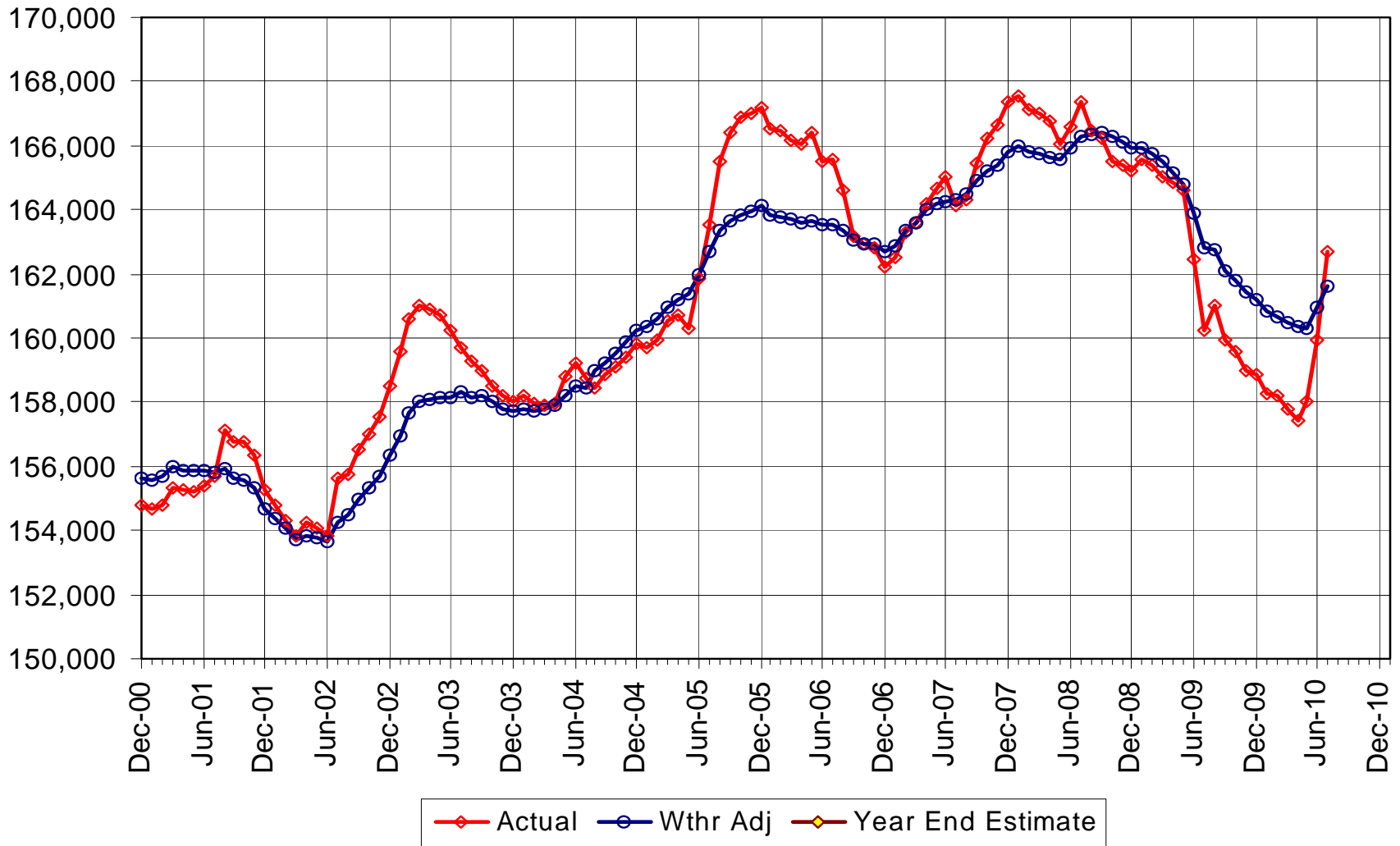
Upstate Daily Energy Tracker - GWh

365 Day Moving Sum



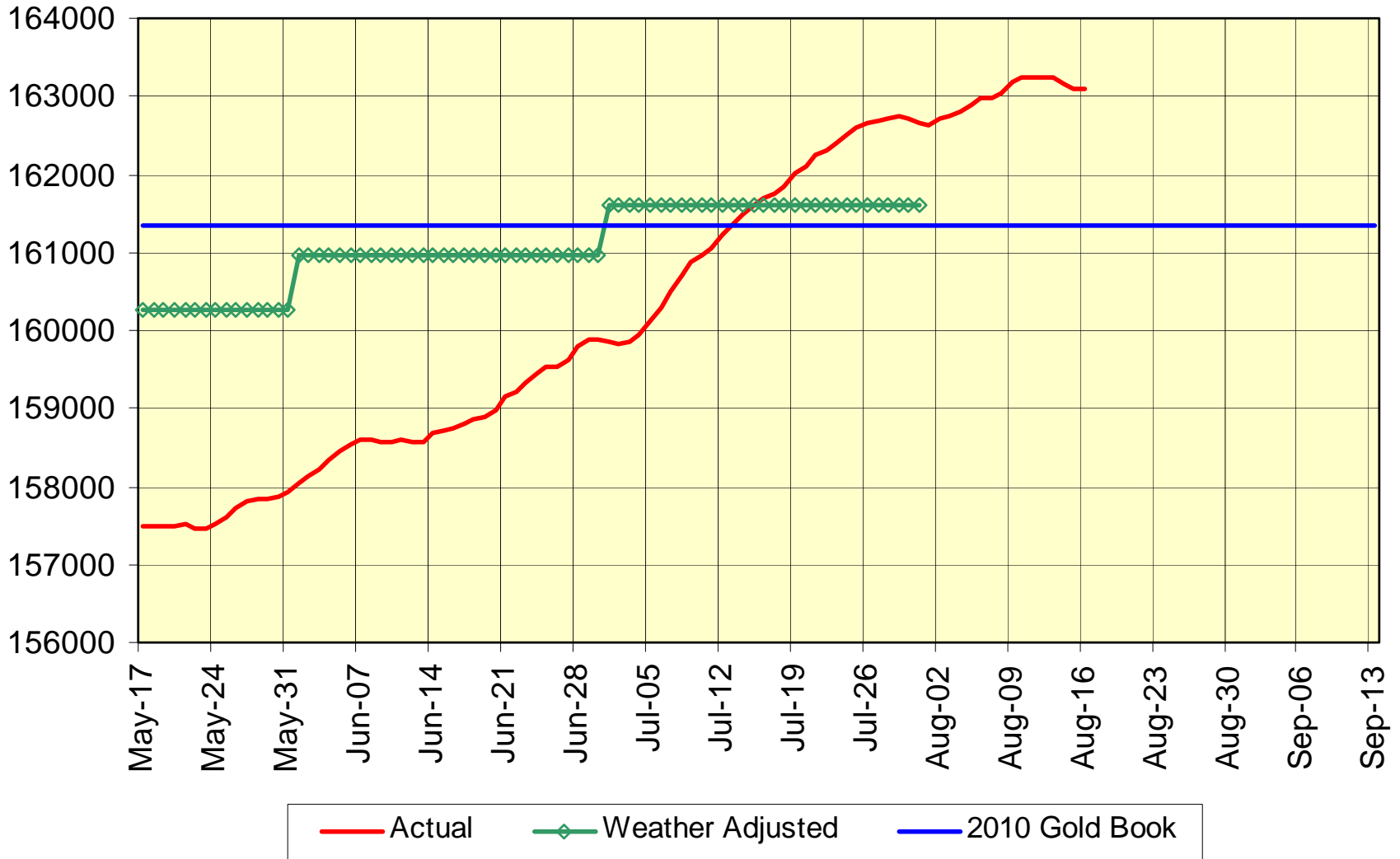
New York State Energy Usage (GWh)

12 month moving sum of actual & weather-adjusted energy

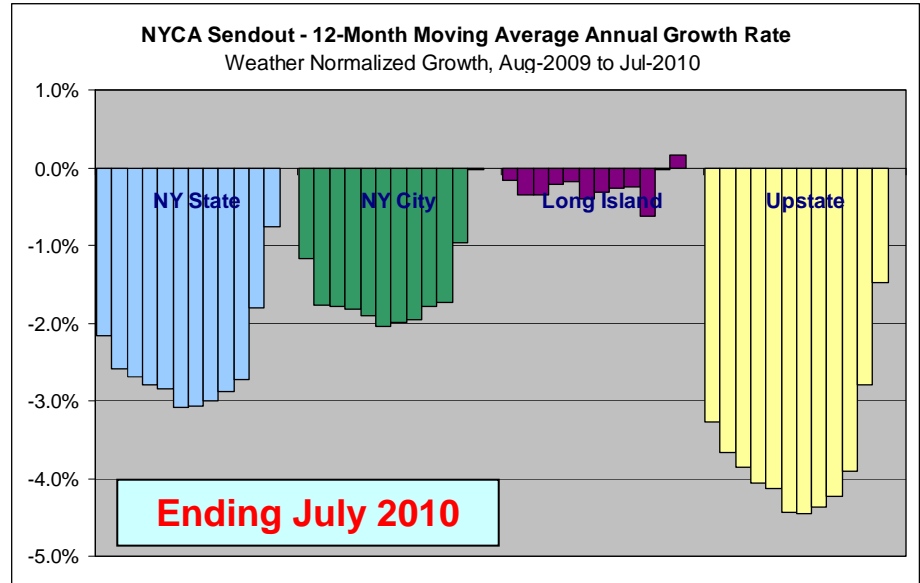
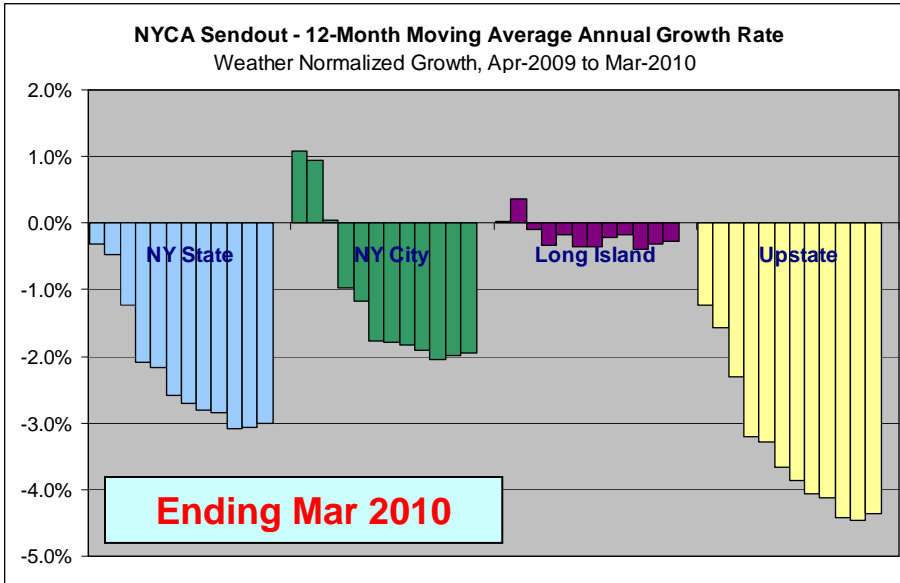
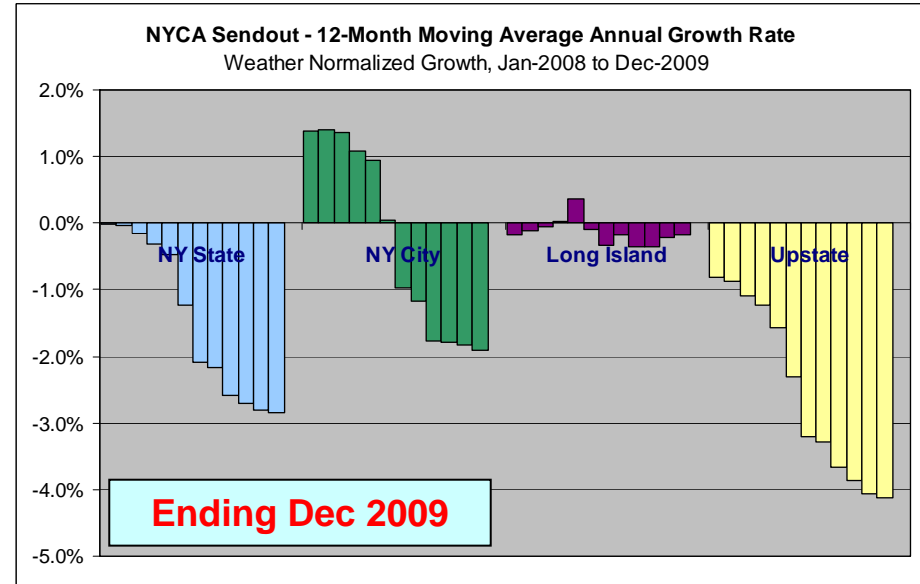
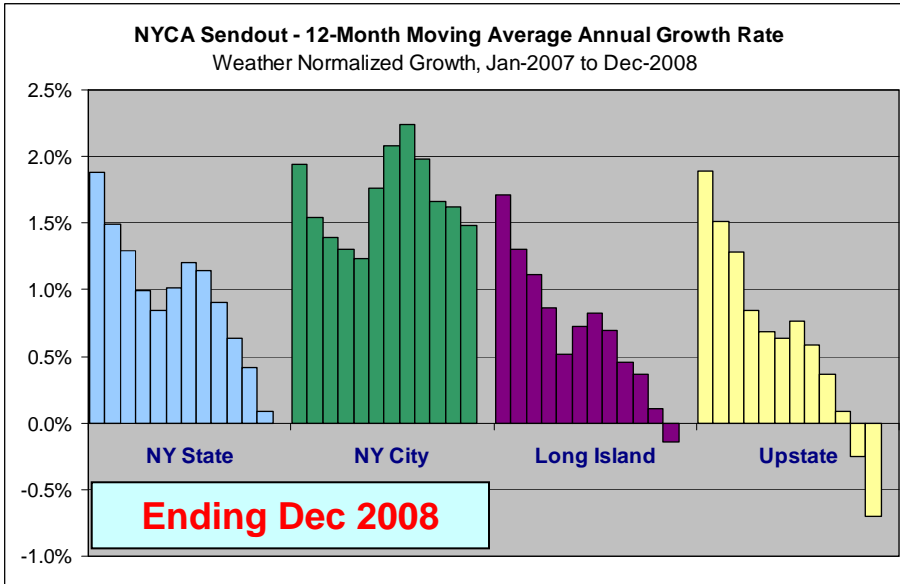


8/16/2010

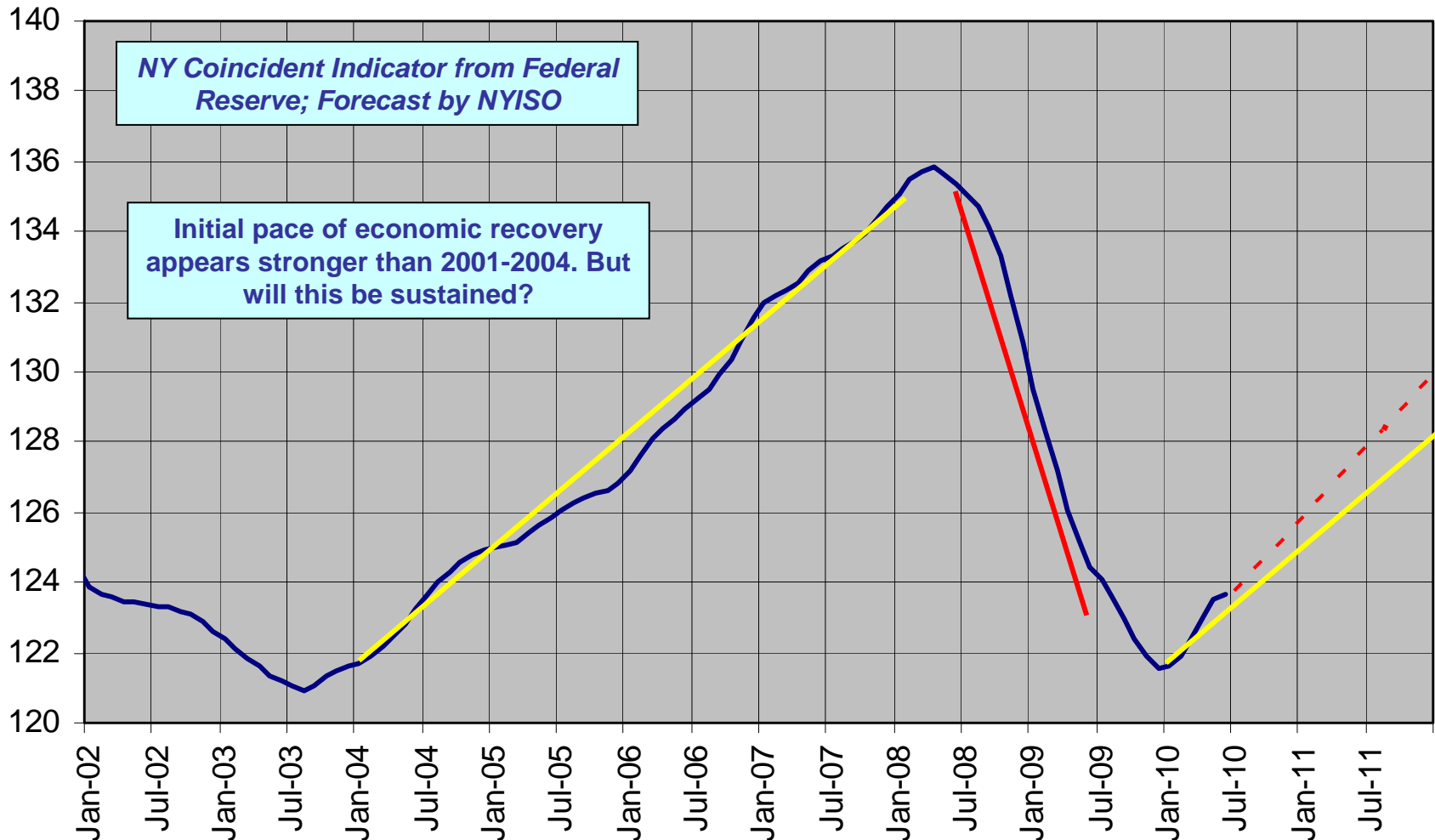
New York State Daily Energy Tracker - GWh 365 Day Moving Sum



Impact of the 2009 Recession on Energy Growth Rates: June 2008 to April 2010

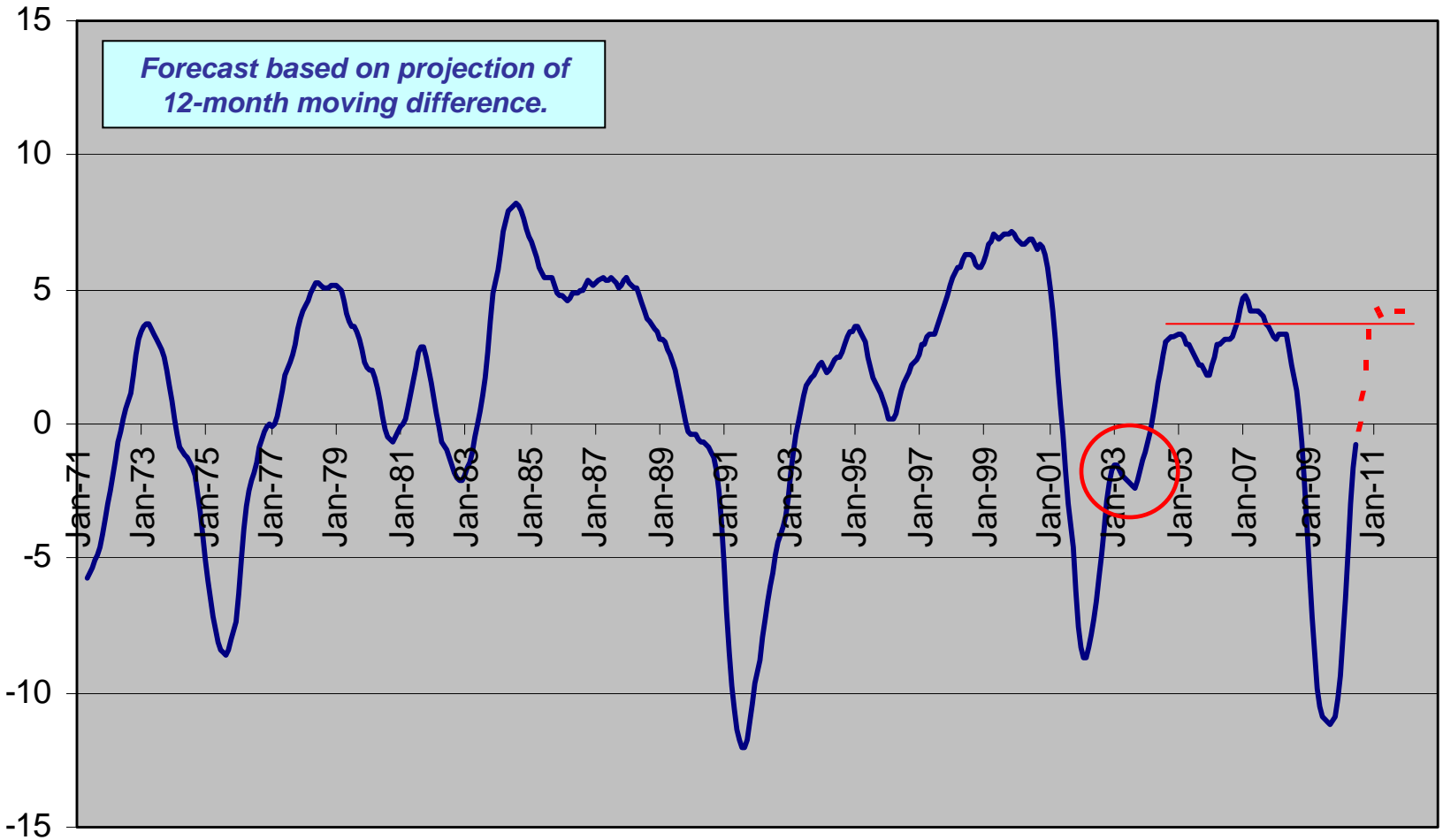


NY Coincident Economic Indicator Actual & Forecast



http://www.newyorkfed.org/research/regional_economy/coincident_summary.html (July 2010)

Change in NY Coincident Indicator, 12 Month Moving Difference Actual & Forecast



The New York Independent System Operator (NYISO) is a not-for-profit corporation that began operations in 1999. The NYISO operates New York's bulk electricity grid, administers the state's wholesale electricity markets, and performs comprehensive reliability and resource planning for the state's bulk electricity system.

www.nyiso.com