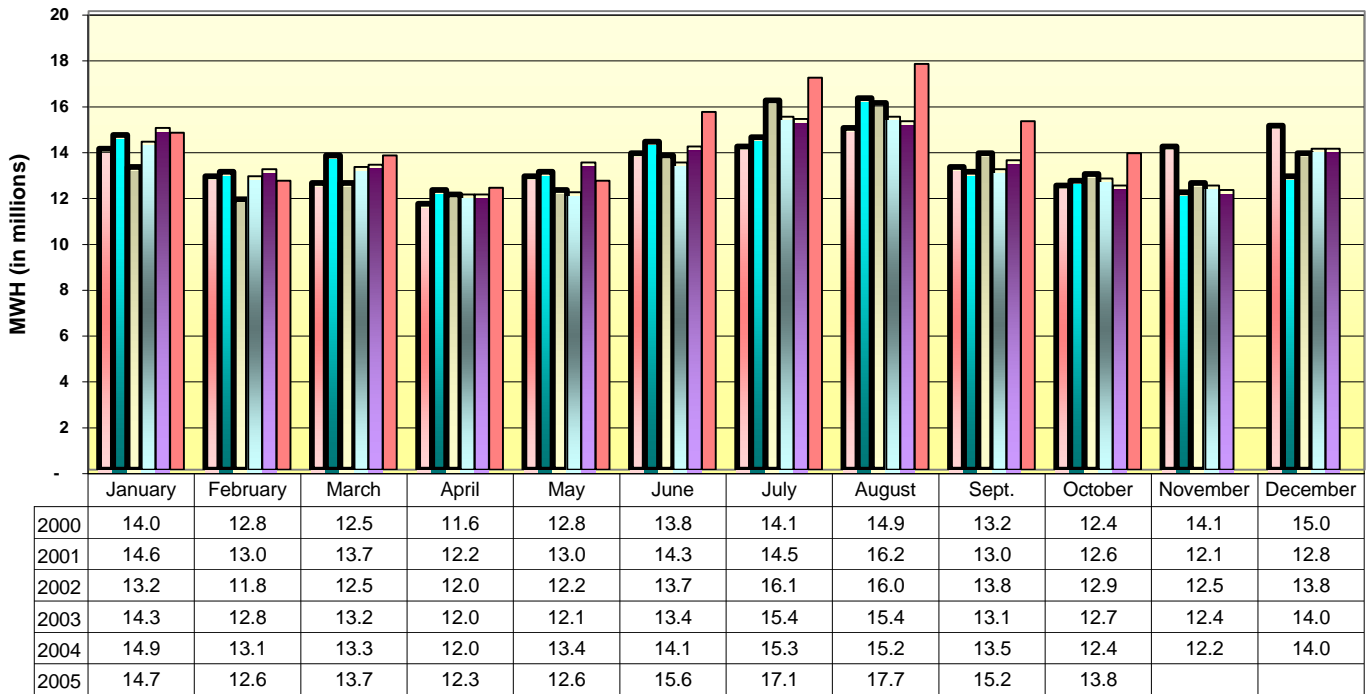


**NYISO
BSP SUBCOMMITTEE
2005 LOAD TRENDS**

**Load Comparison - By Month
2000 - 2005**



■ 2000
 ■ 2001
 ■ 2002
 ■ 2003
 ■ 2004
 ■ 2005

2005 Load Comparison: Forecast vs. Actual

Invoice Month	Forecast Load	Actual Load	Monthly Differential	Cumulative Differential	Cumulative \$ Impact (in millions)
	<i>(millions of MWH)</i>				<i>Over/(Under)</i>
Jan	15.0	14.7	(0.3)	(0.3)	\$ (0.3)
Feb	13.1	12.6	(0.5)	(0.8)	\$ (0.6)
Mar	13.3	13.7	0.4	(0.4)	\$ (0.3)
Apr	12.0	12.3	0.3	(0.1)	\$ (0.1)
May	13.4	12.6	(0.8)	(0.9)	\$ (0.7)
Jun	14.1	15.6	1.5	0.6	\$ 0.5
Jul	15.2	17.1	1.9	2.5	\$ 2.0
Aug	15.2	17.7	2.5	5.0	\$ 3.9
Sep	13.5	15.2	1.7	6.7	\$ 5.3
Oct	12.4	13.8	1.4	8.1	\$ 6.4
Nov	12.4	TBD	TBD	TBD	TBD
Dec	14.1	TBD	TBD	TBD	TBD
Total	163.7	145.3	8.1		\$ 6.4

STATISTICS ON LOAD VOLUME PER YEAR

	2000	2001	2002	2003	2004	2005
January	14.0	14.6	13.2	14.3	14.9	14.7
February	12.8	13.0	11.8	12.8	13.1	12.6
March	12.5	13.7	12.5	13.2	13.3	13.7
April	11.6	12.2	12.0	12.0	12.0	12.3
May	12.8	13.0	12.2	12.1	13.4	12.6
June	13.8	14.3	13.7	13.4	14.1	15.6
July	14.1	14.5	16.1	15.4	15.3	17.1
August	14.9	16.2	16.0	15.4	15.2	17.7
Sept.	13.2	13.0	13.8	13.1	13.5	15.2
October	12.4	12.6	12.9	12.7	12.4	13.8
November	14.1	12.1	12.5	12.4	12.2	
December	15.0	12.8	13.8	14.0	14.0	
	<u>161.2</u>	<u>162.0</u>	<u>160.5</u>	<u>160.8</u>	<u>163.4</u>	<u>145.3</u>