

---

# **NYISO President's Report**

*Management Committee Meeting  
December 2, 2004*

*Agenda #3*

# Report Items

---

- Market Performance Highlights
- Environmental Advisory Council
- NERC Version O Ballot Period (12/3-12/13)

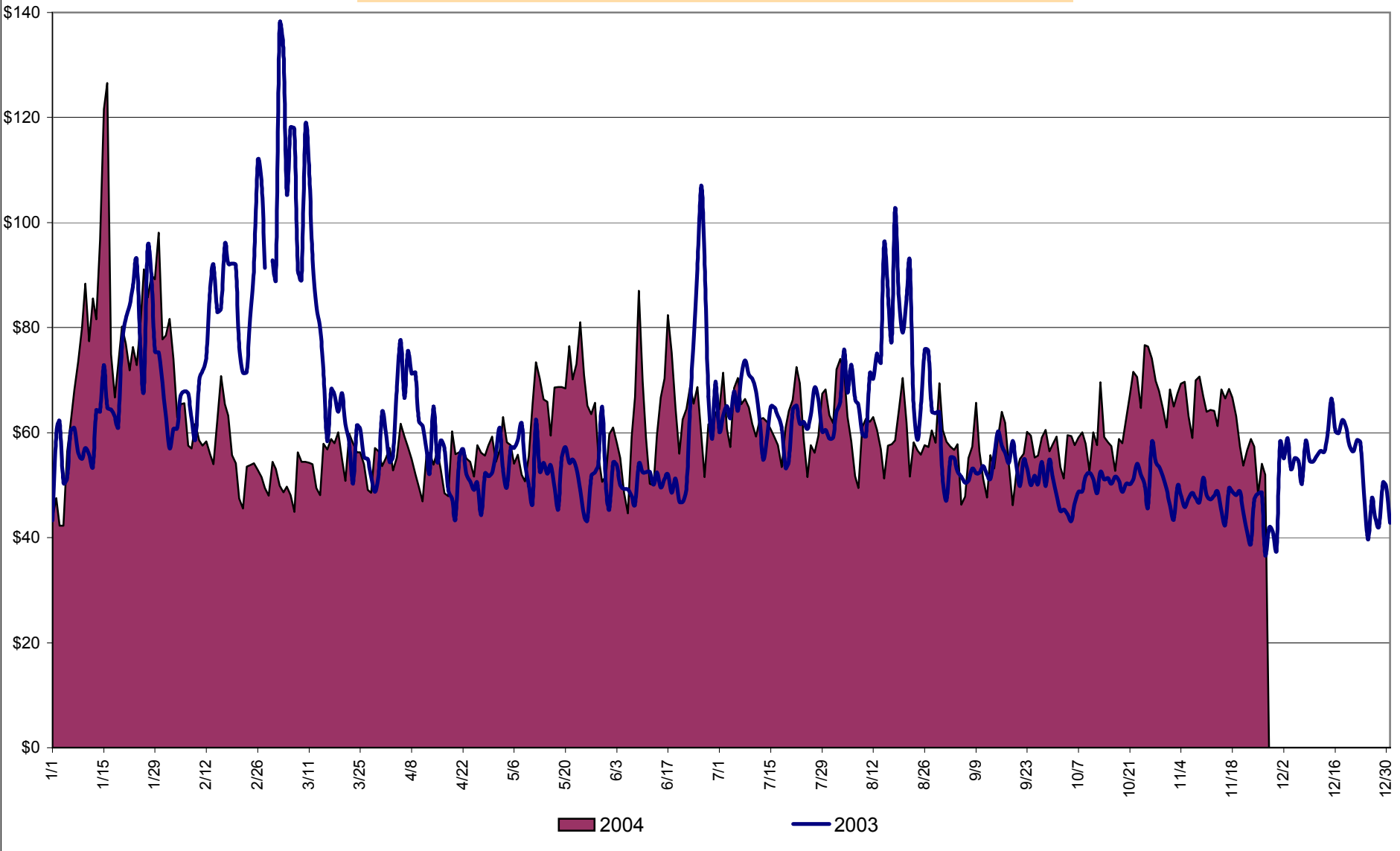
# Proposed Market Performance Highlights for November

(Note: All numbers are preliminary and most are through 11/27)

---

- LBMPs and the NYISO Average Cost are up this month, relative to September, due to higher load levels.
  - *NYISO Average cost is \$63.19/MWh, up from \$62.51/MWh in September 2004.*
- All fuel prices decreased this month.
  - *Kerosene is \$10.58/mmBTU, down from \$11.64/mmBTU in October*
  - *No. 2 Fuel Oil is \$9.92/mmBTU, down from \$10.58/mmBTU in October*
  - *No. 6 Fuel Oil is \$6.10/mmBTU, down from \$6.28/mmBTU in October*
- Day Ahead Regulation prices continue to increase and are \$35.61/MWh, up from \$32.51/MWh last month. Day Ahead Regulation prices are somewhat higher compared to the same month last year (\$35.07/MWh).

**Daily NYISO Average Cost/MWH (Energy & Ancillary Services)\***  
**2003 Annual Average \$62.40/MWH**  
**November 2003 YTD Average \$63.16/MWH**  
**November 2004 YTD Average \$62.40/MWH**



4-A  
Preliminary thru 11/27/04

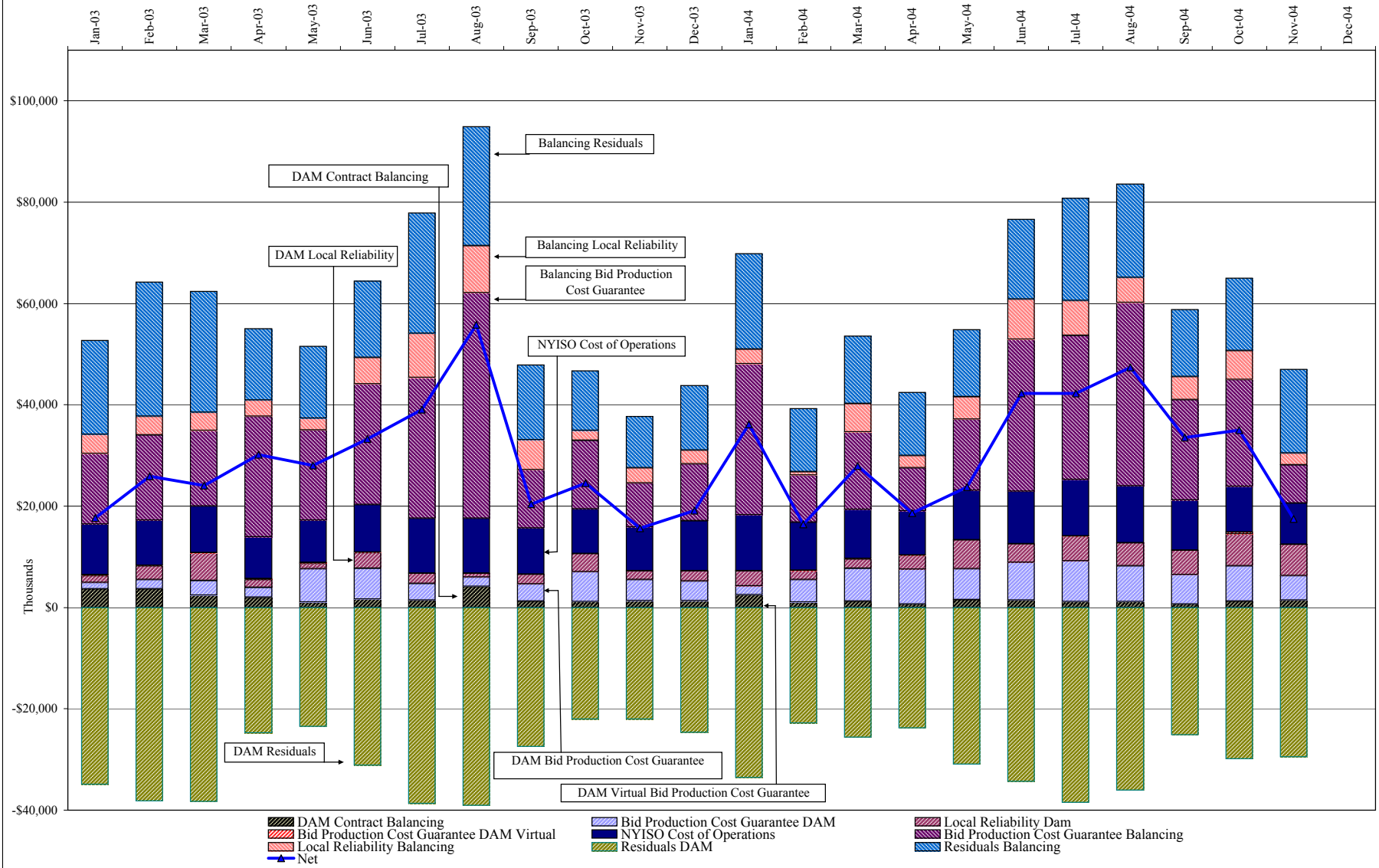
**NYISO Average Cost/MWH (Energy and Ancillary Services)\*  
from the LBMP Customer point of view**

<b>2004</b>		January	February	March	April	May	June	July	August	September	October	November	December
	LBMP	76.13	57.13	50.56	52.48	61.24	59.79	59.59	57.23	53.01	58.66	60.34	
	NTAC	0.47	0.42	0.55	0.51	0.42	0.53	0.34	0.43	0.23	0.29	0.46	
	Reserve	0.27	0.14	0.20	0.17	0.14	0.09	0.06	0.05	0.06	0.12	0.16	
	Regulation	0.18	0.34	0.28	0.15	0.13	0.14	0.13	0.17	0.32	0.43	0.46	
	NYISO Cost of Operations	0.73	0.73	0.73	0.72	0.73	0.73	0.74	0.74	0.73	0.73	0.73	
	Uplift	1.57	0.44	1.27	0.76	0.93	2.16	1.99	2.36	1.71	1.92	0.69	
	Voltage Support and Black Start	0.36	0.36	0.36	0.36	0.36	0.36	0.36	0.36	0.36	0.36	0.36	
	<b>Avg Monthly Cost</b>	79.72	59.56	53.96	55.16	63.94	63.80	63.21	61.34	56.42	62.51	63.19	
	<b>Avg YTD Cost</b>	79.72	70.68	65.29	63.02	63.20	63.30	63.29	63.02	62.32	62.33	62.40	

<b>2003</b>		January	February	March	April	May	June	July	August	September	October	November	December
	LBMP	66.34	76.59	78.31	54.29	49.77	57.46	60.10	68.23	50.82	47.19	43.37	52.19
	NTAC	0.42	0.36	0.67	0.46	0.45	0.40	0.54	0.37	0.25	0.29	0.52	0.37
	Reserve	0.47	0.35	0.45	0.40	0.47	0.25	0.15	0.22	0.13	0.10	0.18	0.16
	Regulation	0.27	0.28	0.39	0.32	0.65	0.34	0.22	0.21	0.35	0.53	0.46	0.25
	NYISO Cost of Operations	0.70	0.69	0.69	0.69	0.69	0.70	0.70	0.70	0.70	0.69	0.69	0.70
	Uplift	0.30	1.09	0.93	1.70	1.51	1.67	1.78	2.57	0.77	1.15	0.45	0.57
	Voltage Support and Black Start	0.34	0.34	0.34	0.34	0.34	0.34	0.34	0.34	0.34	0.34	0.34	0.34
	<b>Avg Monthly Cost</b>	68.83	79.71	81.79	58.20	53.89	61.16	63.83	72.65	53.36	50.29	46.00	54.58
	<b>Avg YTD Cost</b>	68.83	74.02	76.58	72.21	68.84	67.47	66.81	67.73	66.20	64.72	63.16	62.40

\* Excludes ICAP payments

## NYISO Dollar Flows - Uplift - OATT Schedule 1 components



DAM Contract Balancing amounts are for payments made to generating units to make them whole for being dispatched below their Day-Ahead schedule, as a result of out-of-merit dispatches.

DAM Bid Production Cost Guarantees for Virtual Transactions are included in the chart and are shown from the inception of Virtual Transactions. These values are small and cannot be identified on the chart.

DAM residuals are revenue charged or returned to customers due to the under or over collection of funds. On this chart, negative values represent funds returned to Transmission Customers (through Transmission Owners' Transmission Service Charges).

## NYISO Markets Transactions

Transactions by Market 2004	January	February	March	April	May	June	July	August	September	October	November	December
<b>Day Ahead Market MWH</b>	14,614,304	12,806,346	12,836,889	11,818,317	13,026,160	13,737,390	15,071,422	14,939,105	13,228,022	12,375,053	10,981,549	
DAM LSE Internal LBMP Energy Sales	52%	50%	51%	51%	47%	49%	53%	54%	53%	52%	54%	
DAM External TC LBMP Energy Sales	4%	2%	3%	3%	4%	3%	2%	1%	1%	0%	0%	
DAM Bilateral - Internal Bilaterals	41%	45%	44%	44%	46%	45%	43%	43%	44%	45%	44%	
DAM Bilateral - Import/Non-LBMP Market Bilaterals	1%	1%	1%	0%	0%	0%	0%	0%	0%	0%	0%	
DAM Bilateral - Export/Non-LBMP Market Bilaterals	1%	1%	1%	1%	1%	1%	1%	1%	1%	1%	1%	
DAM Bilateral - Wheel Through Bilaterals	1%	1%	1%	1%	1%	1%	1%	1%	1%	0%	0%	
<b>Balancing Energy Market MWH</b>	367,460	269,220	508,837	238,876	379,159	424,726	139,472	297,506	322,983	68,554	248,626	
Balancing Energy LSE Internal LBMP Energy Sales	66%	31%	61%	84%	30%	29%	-46%	35%	19%	-9%	25%	
Balancing Energy External TC LBMP Energy Sales	57%	78%	41%	38%	77%	74%	170%	73%	50%	125%	68%	
Balancing Energy Bilateral - Internal Bilaterals	-20%	0%	0%	-9%	3%	5%	13%	5%	39%	23%	12%	
Balancing Energy Bilateral - Import/Non-LBMP Market Bilaterals	0%	1%	0%	0%	0%	0%	0%	0%	0%	0%	1%	
Balancing Energy Bilateral - Export/Non-LBMP Market Bilaterals	0%	0%	0%	1%	1%	0%	1%	0%	0%	0%	0%	
Balancing Energy Bilateral - Wheel Through Bilaterals	-4%	-11%	-3%	-14%	-11%	-8%	-39%	-13%	-8%	-40%	-5%	
<b>Transactions Summary</b>												
LBMP	58%	54%	56%	55%	53%	54%	55%	56%	54%	53%	55%	
Internal Bilaterals	40%	44%	42%	43%	45%	44%	43%	43%	44%	45%	43%	
Import Bilaterals	1%	1%	1%	0%	0%	0%	0%	0%	0%	0%	0%	
Export Bilaterals	1%	1%	1%	1%	1%	1%	1%	1%	1%	1%	1%	
Wheels Through	1%	0%	1%	0%	1%	1%	0%	1%	1%	0%	0%	
<b>Market Share of Total Load</b>												
Day Ahead Market	97.5%	97.9%	96.2%	98.0%	97.2%	97.0%	99.1%	98.0%	97.6%	99.4%	97.8%	
Balancing Energy +	2.5%	2.1%	3.8%	2.0%	2.8%	3.0%	0.9%	2.0%	2.4%	0.6%	2.2%	
Total MWH	14,981,764	13,075,566	13,345,726	12,057,193	13,405,319	14,162,116	15,210,894	15,236,611	13,551,005	12,443,607	11,230,175	
Average Daily Energy Sendout/Month GWh	464	440	416	393	408	451	481	485	447	403	415	

## Transactions by Market 2003

<b>Day Ahead Market MWH</b>	14,187,752	12,695,868	13,126,563	11,997,655	12,029,453	13,341,831	15,444,857	15,759,082	13,003,309	12,507,780	12,332,456	13,973,266
DAM LSE Internal LBMP Energy Sales	46%	48%	46%	49%	46%	48%	55%	57%	49%	48%	47%	48%
DAM External TC LBMP Energy Sales	1%	1%	1%	1%	2%	2%	1%	0%	1%	2%	2%	2%
DAM Bilateral - Internal Bilaterals	50%	49%	50%	46%	49%	46%	43%	40%	48%	47%	48%	46%
DAM Bilateral - Import/Non-LBMP Market Bilaterals	1%	1%	1%	1%	0%	0%	0%	0%	0%	0%	0%	0%
DAM Bilateral - Export/Non-LBMP Market Bilaterals	1%	1%	2%	1%	1%	1%	1%	1%	1%	1%	1%	1%
DAM Bilateral - Wheel Through Bilaterals	1%	1%	1%	2%	2%	2%	1%	1%	1%	1%	1%	2%
<b>Balancing Energy Market MWH</b>	347,539	285,381	376,222	235,800	278,939	291,519	208,142	-55,913	394,363	338,562	319,065	385,707
Balancing Energy LSE Internal LBMP Energy Sales	58%	35%	52%	72%	48%	39%	53%	-146%	65%	53%	26%	43%
Balancing Energy External TC LBMP Energy Sales	58%	80%	95%	73%	69%	78%	79%	242%	44%	61%	77%	68%
Balancing Energy Bilateral - Internal Bilaterals	-6%	-10%	-2%	0%	-5%	5%	-2%	-75%	1%	3%	0%	-2%
Balancing Energy Bilateral - Import/Non-LBMP Market Bilaterals	4%	1%	1%	1%	1%	0%	0%	2%	0%	0%	0%	0%
Balancing Energy Bilateral - Export/Non-LBMP Market Bilaterals	0%	0%	-38%	0%	0%	0%	0%	-14%	0%	0%	0%	0%
Balancing Energy Bilateral - Wheel Through Bilaterals	-14%	-7%	-8%	-46%	-14%	-23%	-31%	-109%	-10%	-16%	-3%	-9%
<b>Transactions Summary</b>												
LBMP	49%	50%	49%	52%	49%	52%	56%	58%	51%	52%	51%	52%
Internal Bilaterals	48%	47%	48%	45%	48%	46%	42%	40%	46%	46%	47%	45%
Import Bilaterals	1%	1%	1%	1%	0%	0%	0%	0%	0%	0%	0%	0%
Export Bilaterals	1%	1%	1%	1%	1%	1%	1%	1%	1%	1%	1%	1%
Wheels Through	1%	1%	1%	1%	1%	1%	1%	1%	0%	1%	1%	2%
<b>Market Share of Total Load</b>												
Day Ahead Market	97.6%	97.8%	97.2%	98.1%	97.7%	97.9%	98.7%	100.4%	97.1%	97.4%	97.5%	97.3%
Balancing Energy +	2.4%	2.2%	2.8%	1.9%	2.3%	2.1%	1.3%	-0.4% *	2.9%	2.6%	2.5%	2.7%
Total MWH	14,535,291	12,981,249	13,502,785	12,233,455	12,308,392	13,633,350	15,652,999	15,703,169	13,397,672	12,846,342	12,651,521	14,358,973
Average Daily Energy Sendout/Month GWh	458	450	418	393	382	432	497	498	433	397	402	435

+ Balancing Energy: Load(MW) purchased at Real Time LBMP.

\* The signs for the detail section intuitively reflect the direction of power flow eliminating the use of double negatives when Balancing Energy is negative.

Notes: Percent totals may not equal 100% due to rounding.  
Virtual Transactions are not reflected in this chart.

### NYISO Markets 2004 Energy Statistics

	January	February	March	April	May	June	July	August	September	October	November	December
<b><u>DAY AHEAD LBMP</u></b>												
Price *	\$72.12	\$55.31	\$49.08	\$51.01	\$57.25	\$55.03	\$55.33	\$52.59	\$49.03	\$55.32	\$56.48	
Standard Deviation	\$25.99	\$14.40	\$10.90	\$11.42	\$16.72	\$17.82	\$12.68	\$12.49	\$11.17	\$12.89	\$14.58	
Load Wtg.Price **	\$75.01	\$56.90	\$50.44	\$52.50	\$59.89	\$58.29	\$57.32	\$54.60	\$50.78	\$56.93	\$58.39	
<b><u>BME *** LBMP</u></b>												
Price *	\$77.51	\$54.41	\$53.01	\$56.94	\$60.98	\$59.15	\$60.43	\$58.27	\$58.01	\$57.59	\$58.18	
Standard Deviation	\$37.54	\$15.73	\$16.25	\$18.41	\$23.58	\$24.50	\$20.60	\$19.57	\$25.82	\$16.11	\$19.38	
Load Wtg.Price **	\$80.51	\$55.89	\$54.71	\$58.89	\$64.14	\$63.17	\$62.81	\$61.02	\$60.75	\$59.27	\$60.39	
<b><u>REAL TIME LBMP</u></b>												
Price *	\$73.72	\$52.95	\$49.56	\$50.83	\$56.20	\$54.03	\$55.08	\$52.89	\$51.06	\$54.00	\$56.58	
Standard Deviation	\$32.61	\$15.04	\$17.75	\$14.15	\$25.74	\$23.42	\$17.07	\$19.56	\$15.59	\$17.42	\$19.69	
Load Wtg.Price **	\$76.85	\$54.33	\$51.27	\$52.36	\$59.61	\$58.01	\$57.44	\$55.75	\$53.06	\$55.57	\$58.70	
Average Daily Energy Sendout/Month GWh	464	440	416	393	408	451	481	485	447	403	415	

### NYISO Markets 2003 Energy Statistics

	January	February	March	April	May	June	July	August	September	October	November	December
<b><u>DAY AHEAD LBMP</u></b>												
Price *	\$61.33	\$72.81	\$73.18	\$51.58	\$46.43	\$51.45	\$57.10	\$64.94	\$48.29	\$45.81	\$41.58	\$50.07
Standard Deviation	\$20.09	\$21.12	\$29.70	\$12.47	\$14.03	\$21.27	\$11.88	\$18.06	\$11.04	\$10.91	\$12.06	\$14.92
Load Wtg.Price **	\$63.81	\$75.03	\$76.25	\$53.14	\$48.47	\$55.52	\$58.93	\$67.71	\$50.02	\$47.34	\$43.21	\$51.95
<b><u>BME *** LBMP</u></b>												
Price *	\$63.19	\$80.25	\$74.27	\$59.22	\$50.27	\$53.84	\$59.99	\$67.63	\$50.34	\$48.74	\$41.01	\$48.73
Standard Deviation	\$25.43	\$41.53	\$32.77	\$25.00	\$16.37	\$22.27	\$14.82	\$72.20	\$14.01	\$15.35	\$18.51	\$18.89
Load Wtg.Price **	\$65.54	\$82.65	\$77.33	\$61.45	\$52.31	\$57.49	\$61.94	\$71.07	\$51.96	\$50.39	\$43.05	\$50.81
<b><u>REAL TIME LBMP</u></b>												
Price *	\$61.53	\$74.03	\$70.54	\$53.94	\$46.74	\$48.96	\$55.94	\$64.32	\$47.24	\$48.57	\$38.72	\$46.45
Standard Deviation	\$30.16	\$37.46	\$37.97	\$28.70	\$23.03	\$21.57	\$13.68	\$34.91	\$15.52	\$25.74	\$22.35	\$20.55
Load Wtg.Price **	\$64.43	\$76.41	\$74.02	\$56.14	\$49.44	\$52.82	\$57.79	\$67.27	\$49.12	\$49.98	\$40.96	\$48.73
Average Daily Energy Sendout/Month GWh	458	450	418	393	382	432	497	498	433	397	402	435

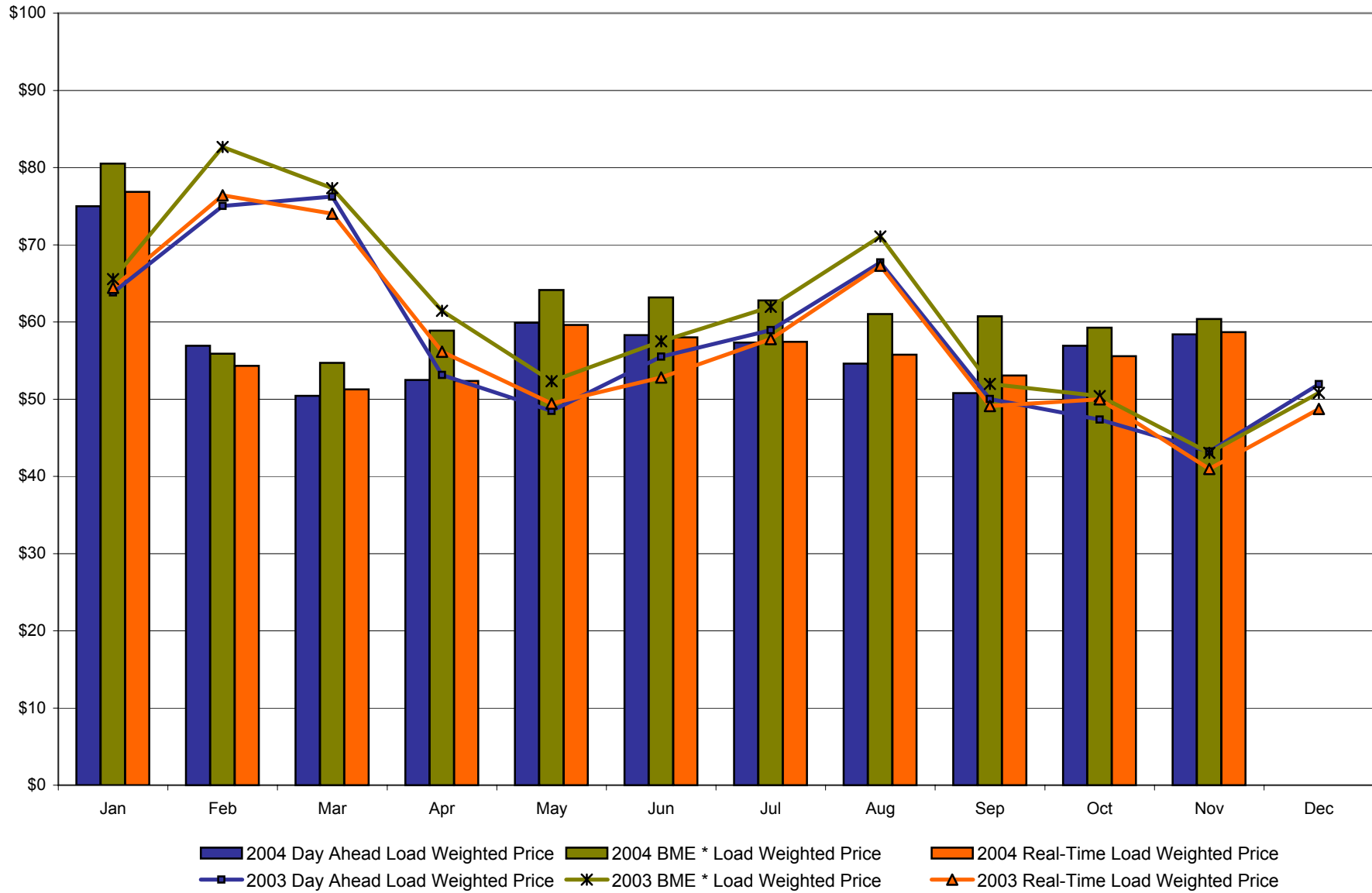
\* Average zonal load weighted prices

\*\* Average zonal load weighted prices, load weighted in each hour

\*\*\* Commonly referred to as Hour Ahead Market (HAM)



**NYISO Monthly Average Internal LBMPs  
2003 - 2004**



\* Commonly referred to as Hour Ahead Market (HAM)

4-F  
Preliminary thru 11/27/04

**November 2004 Zonal Statistics for NYISO (\$/MWH)**

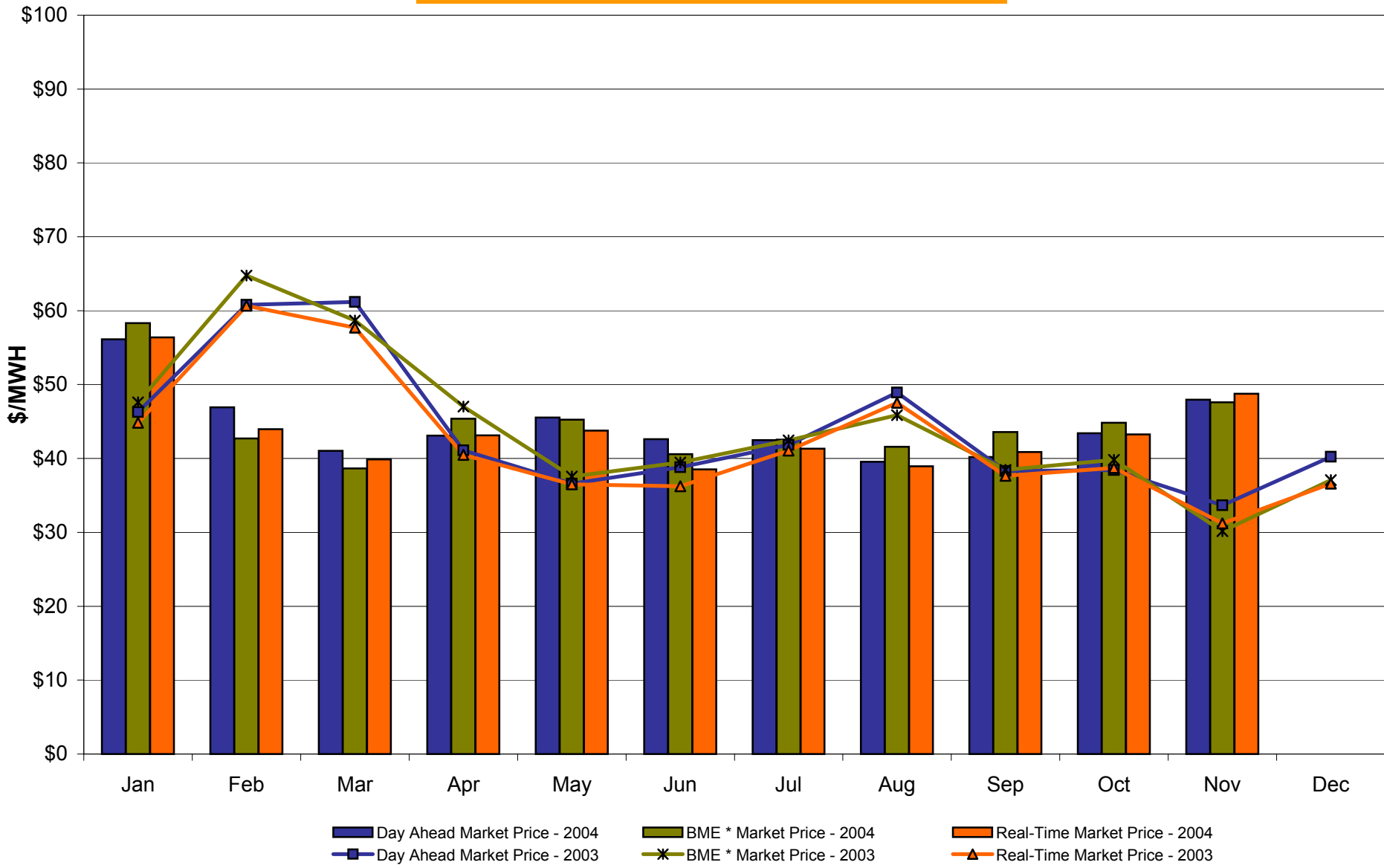
	<b>WEST Zone A</b>	<b>GENESEE Zone B</b>	<b>NORTH Zone D</b>	<b>CENTRAL Zone C</b>	<b>MOHAWK VALLEY Zone E</b>	<b>CAPITAL Zone F</b>	<b>HUDSON VALLEY Zone G</b>	<b>MILLWOOD Zone H</b>	<b>DUNWOODIE Zone I</b>	<b>NEW YORK CITY Zone J</b>	<b>LONG ISLAND Zone K</b>
<b><u>DAY AHEAD LBMP</u></b>											
Unweighted Price *	47.94	50.47	51.47	50.79	52.70	55.63	56.03	56.97	57.39	61.52	61.52
Standard Deviation	11.98	12.68	12.65	12.99	13.32	14.36	14.77	15.49	15.64	16.43	16.32
<b><u>BME ** LBMP</u></b>											
Unweighted Price *	47.60	49.47	52.84	52.77	54.27	55.82	57.76	57.53	58.07	64.16	65.22
Standard Deviation	16.97	17.15	17.07	17.92	18.07	18.50	19.26	19.16	19.34	23.69	19.14
<b><u>REAL TIME LBMP</u></b>											
Unweighted Price *	48.76	51.16	51.92	51.20	53.10	53.10	55.34	56.29	56.89	61.63	61.71
Standard Deviation	17.42	18.33	18.31	18.33	18.83	19.26	20.18	20.83	21.06	21.93	22.12
	<b>ONTARIO IMO Zone O</b>	<b>HYDRO QUEBEC Zone M</b>	<b>PJM Zone P</b>	<b>NEW ENGLAND Zone N</b>							
<b><u>DAY AHEAD LBMP</u></b>											
Unweighted Price *	47.13	51.66	49.12	55.58							
Standard Deviation	11.58	12.82	13.33	14.35							
<b><u>BME ** LBMP</u></b>											
Unweighted Price *	45.70	52.50	49.66	55.86							
Standard Deviation	16.90	17.55	19.34	18.99							
<b><u>REAL TIME LBMP</u></b>											
Unweighted Price *	48.05	51.53	48.41	53.82							
Standard Deviation	17.95	18.52	18.82	19.26							

\* Straight zonal LBMP averages

\*\* Commonly referred to as Hour Ahead Market (HAM)

4-G  
Preliminary thru 11/27/04

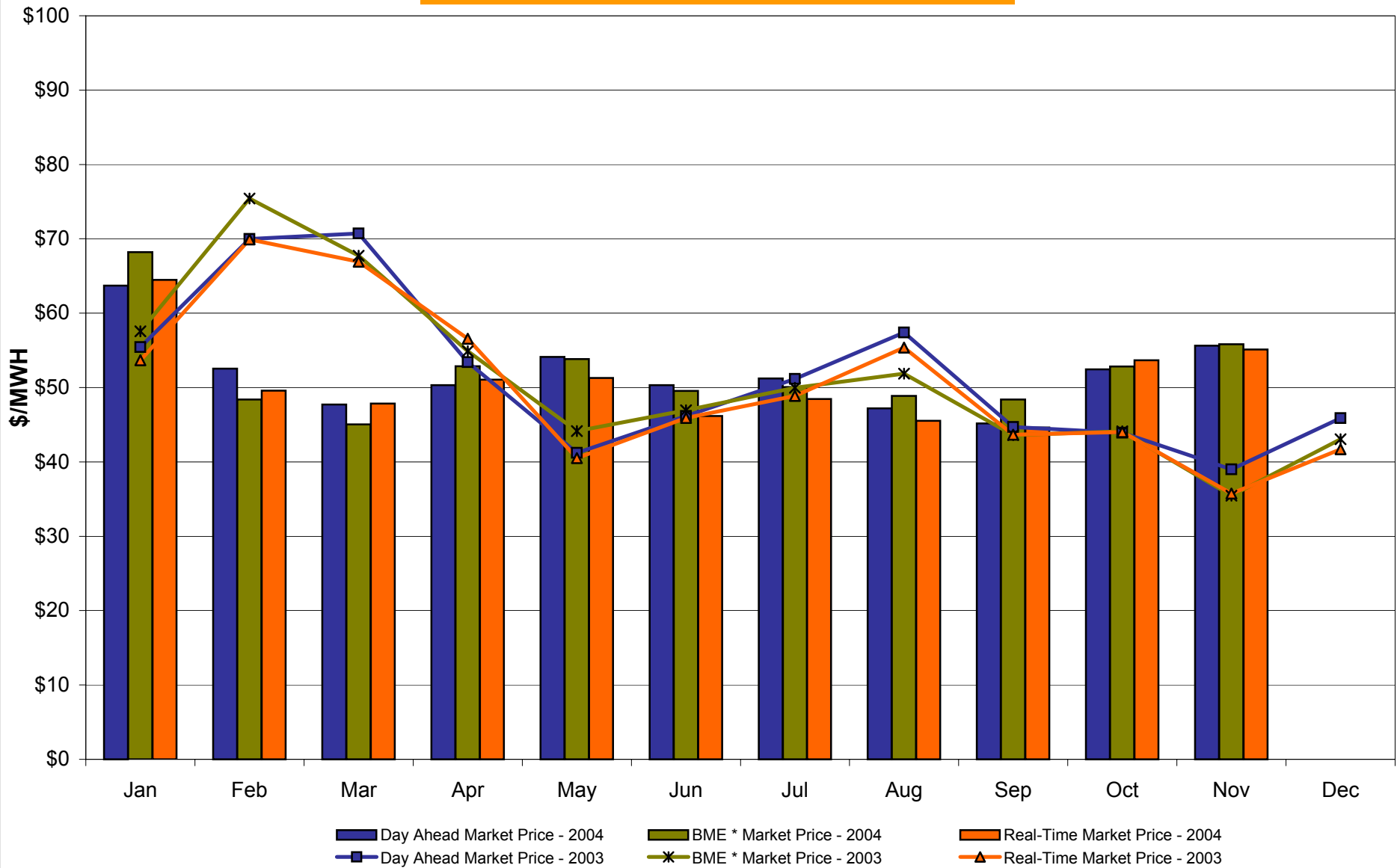
## West Zone A Monthly Average LBMP Prices 2003 - 2004



\* Commonly referred to as Hour Ahead Market (HAM)

4-H  
Preliminary thru 11/27/04

## Capital Zone F Monthly Average LBMP Prices 2003 - 2004

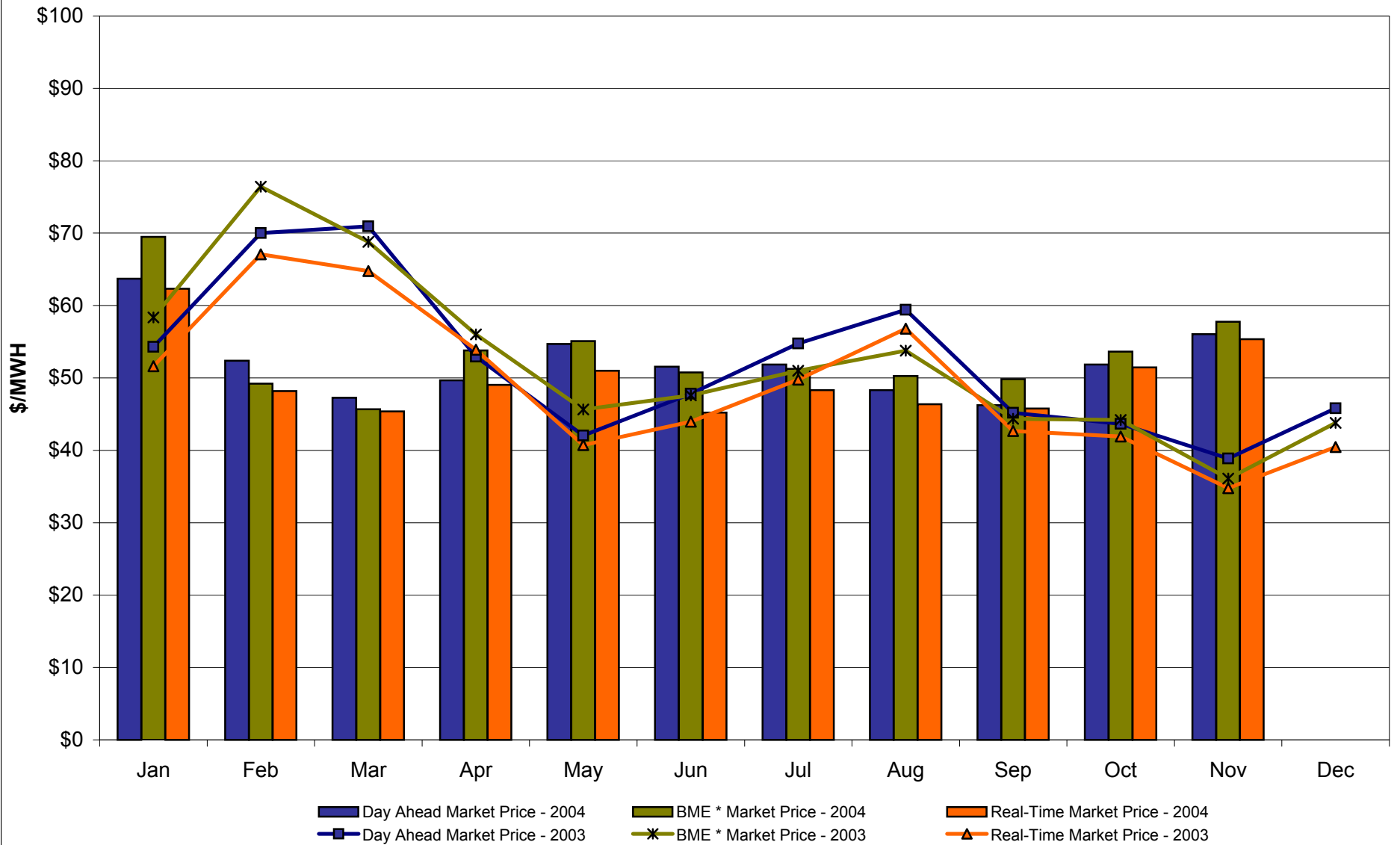


\* Commonly referred to as Hour Ahead Market (HAM)

4-1  
Preliminary thru 11/27/04

Market Monitoring  
Prepared: 11/29/2004 10:30

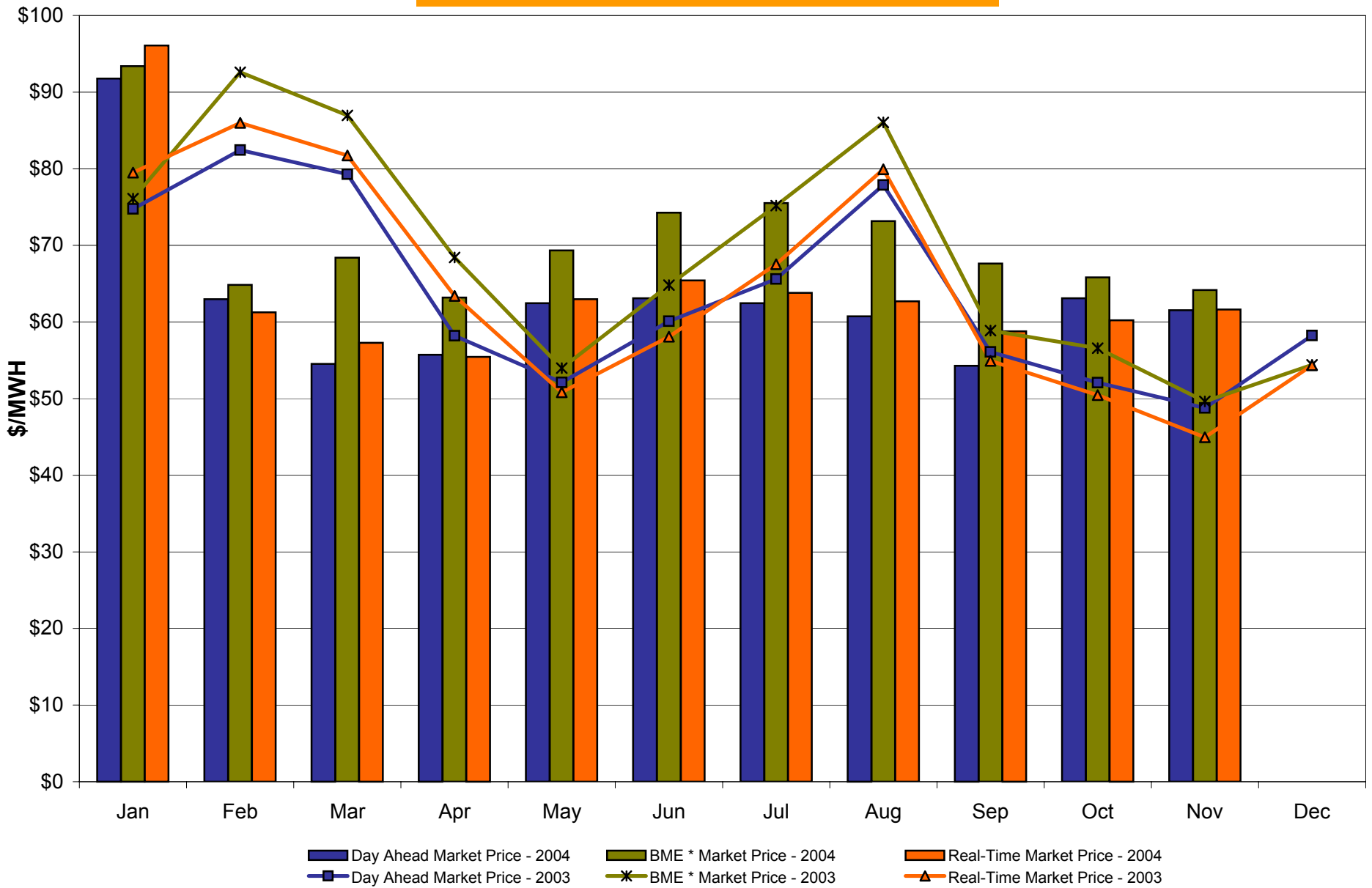
## Hudson Valley Zone G Monthly Average LBMP Prices 2003 - 2004



\* Commonly referred to as Hour Ahead Market (HAM)

4-J  
Preliminary thru 11/27/04

## NYC Zone J Monthly Average LBMP Prices 2003 - 2004

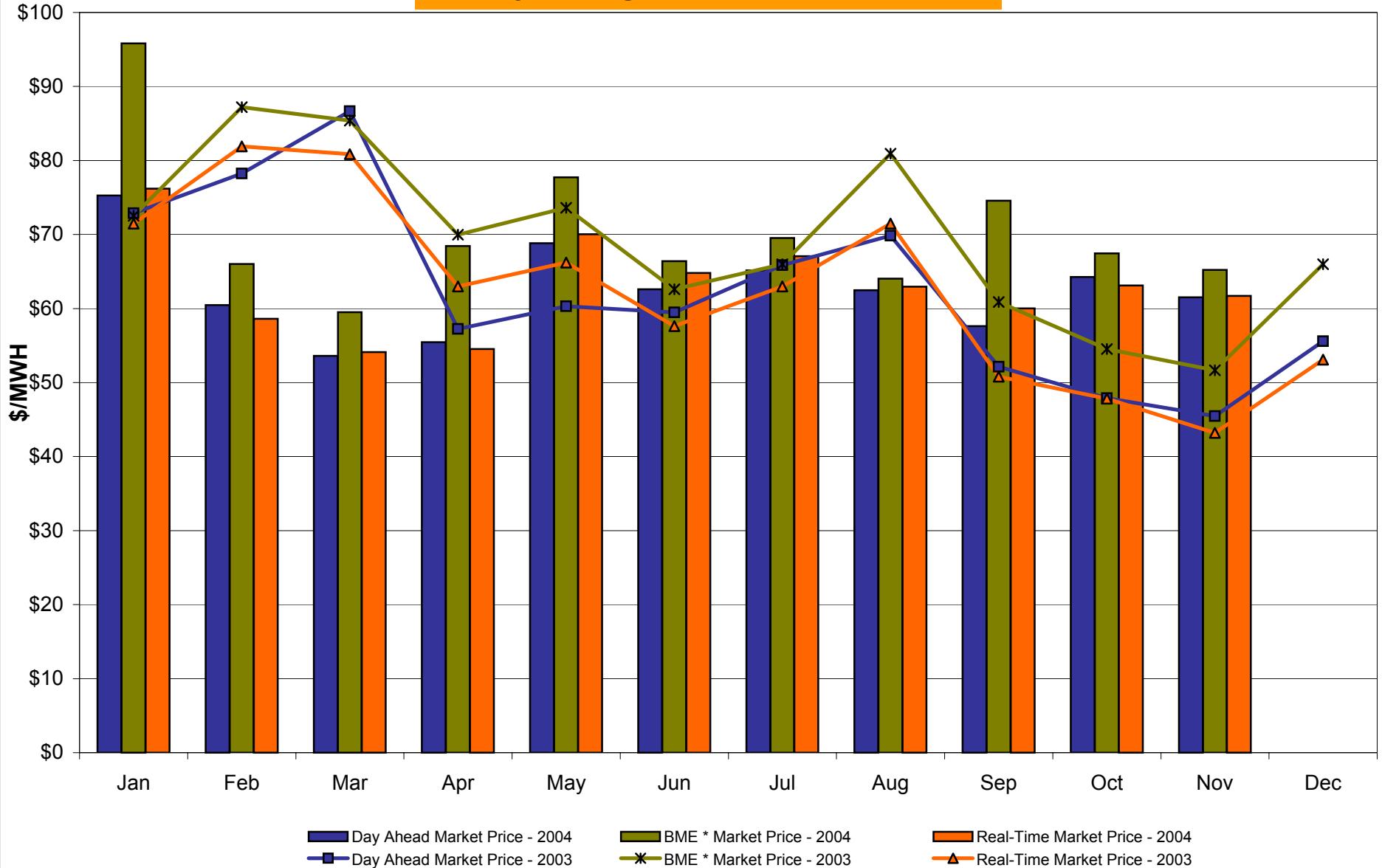


\* Commonly referred to as Hour Ahead Market (HAM)

4-K  
Preliminary thru 11/27/04

Market Monitoring  
Prepared: 11/29/2004 10:30

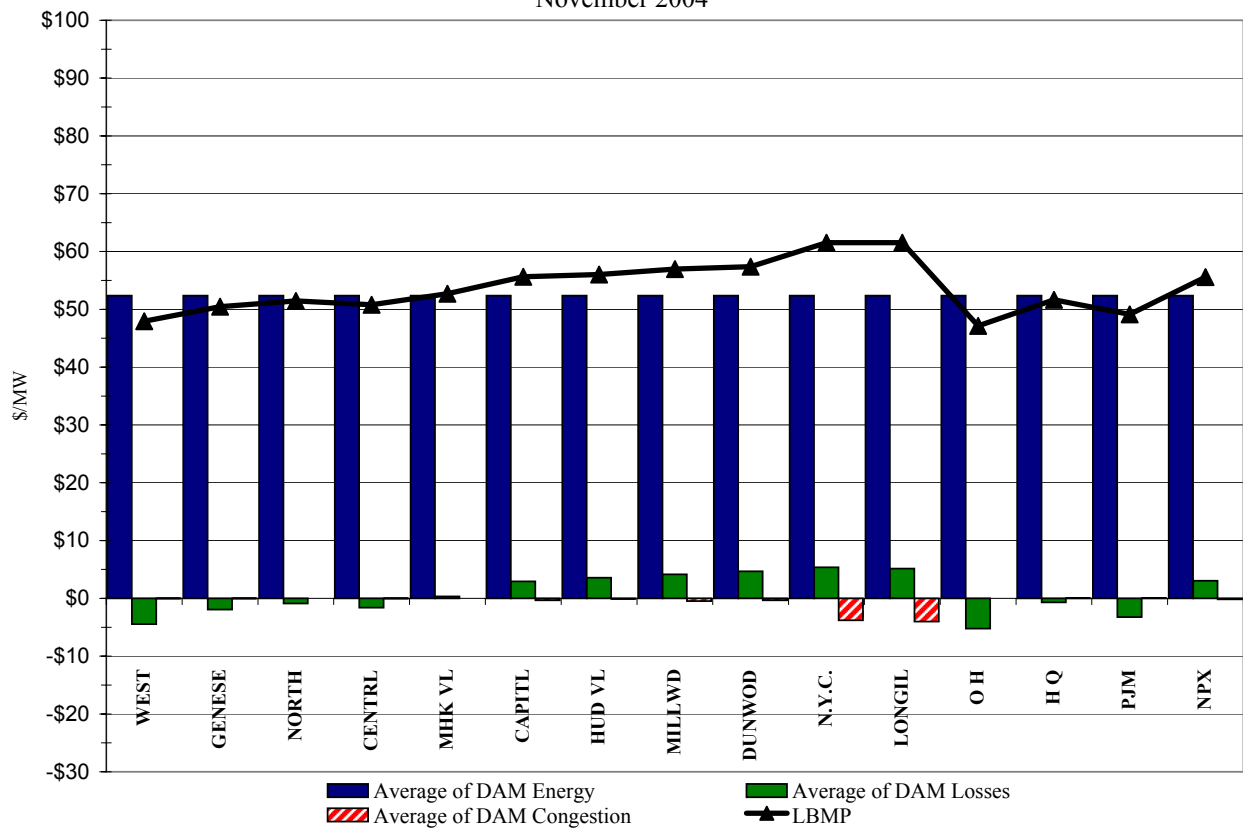
## Long Island Zone K Monthly Average LBMP Prices 2003 - 2004



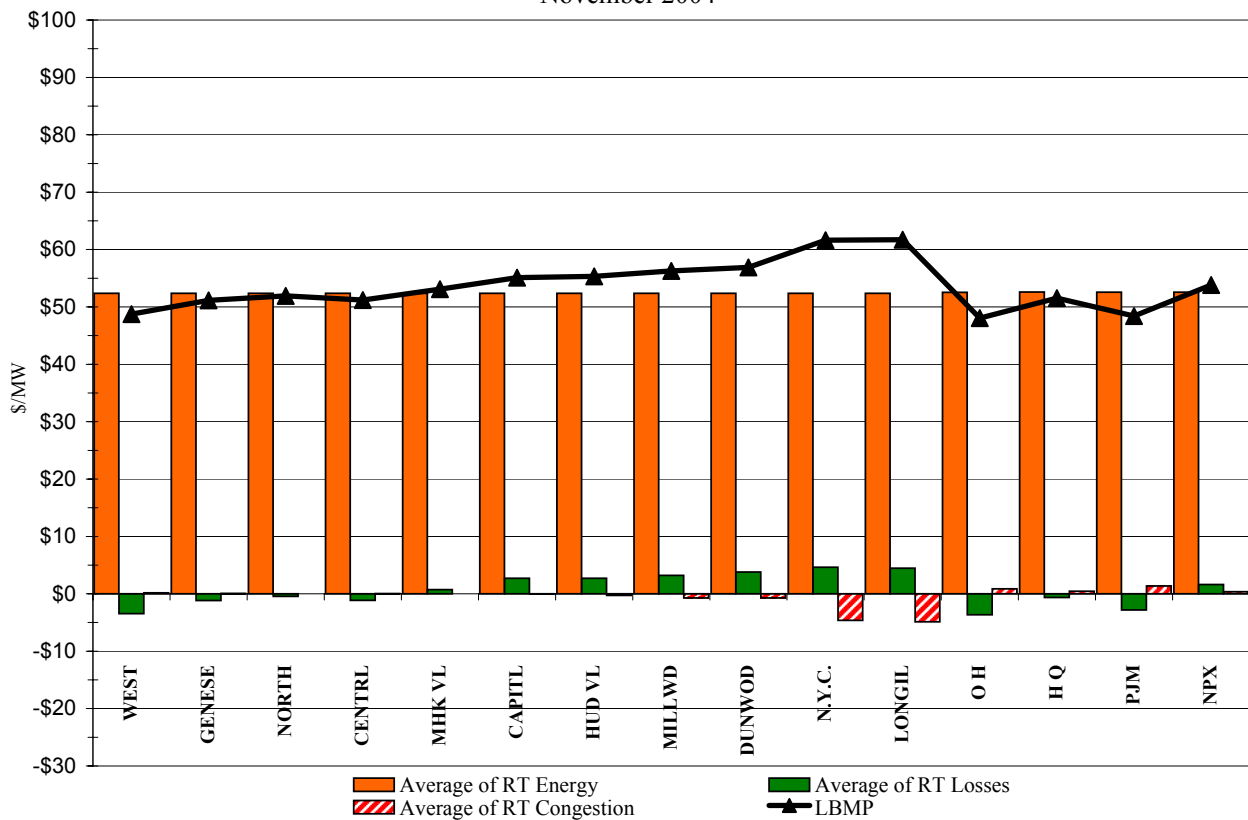
\* Commonly referred to as Hour Ahead Market (HAM)

4-L  
Preliminary thru 11/27/04

DAM Zonal Unweighted Monthly Average LBMP Components  
November 2004



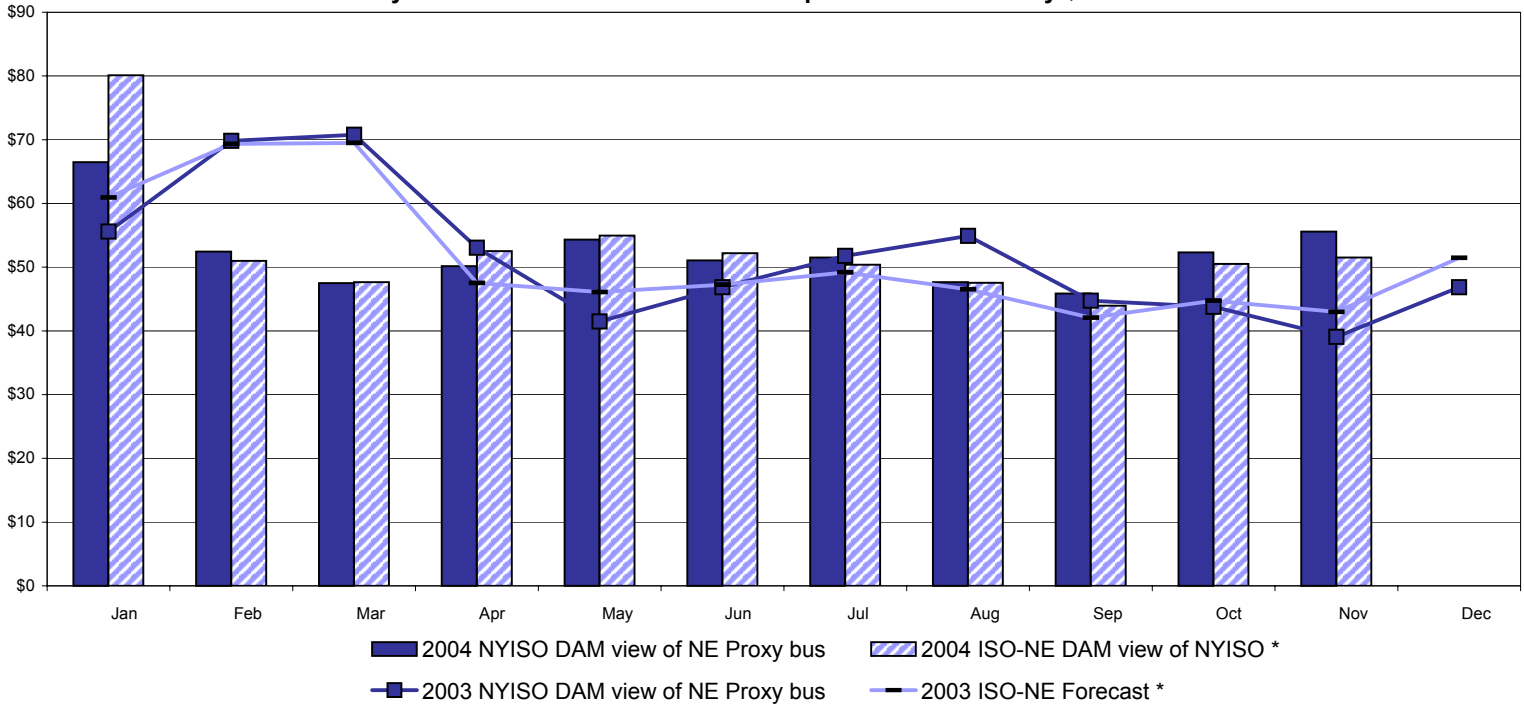
RT Zonal Unweighted Monthly Average LBMP Components  
November 2004



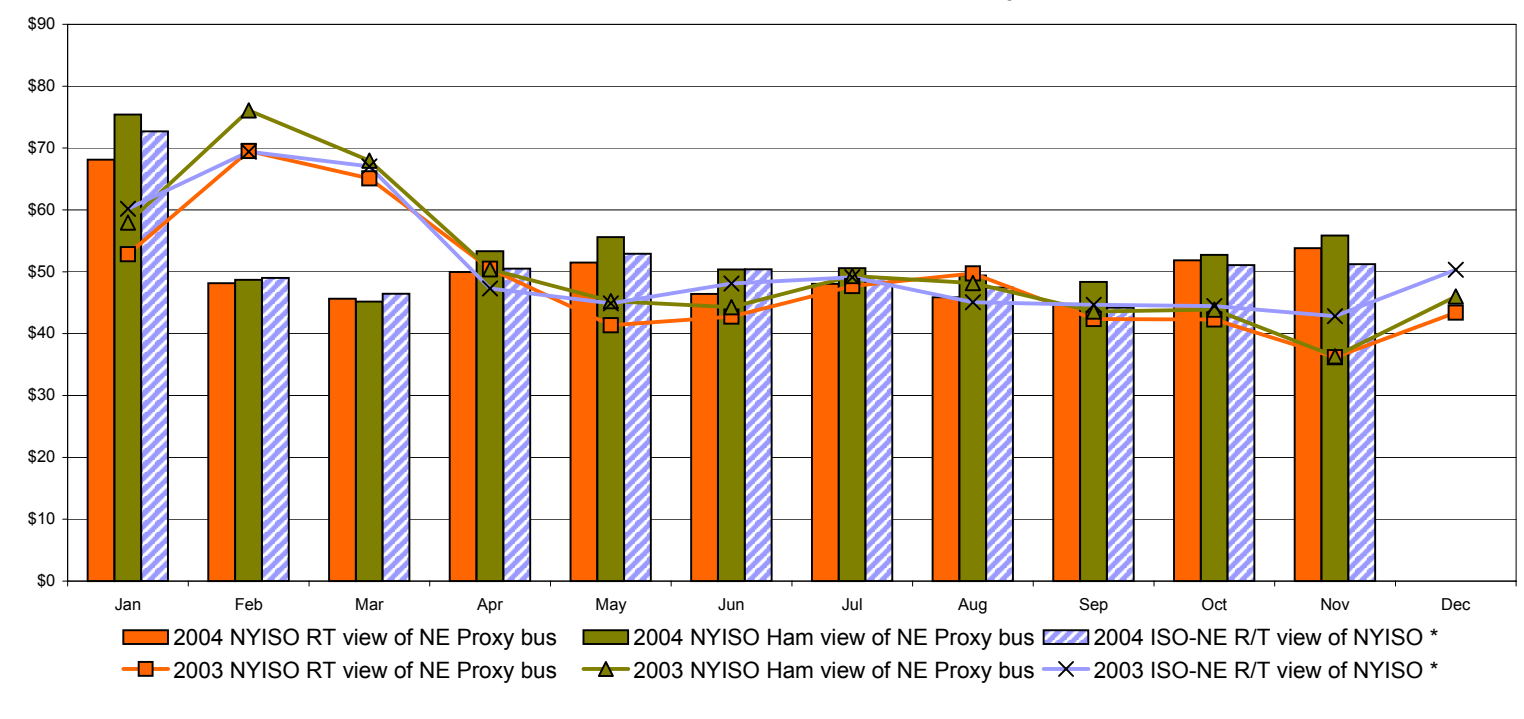


# External Comparison ISO-NE

## Day Ahead Market External Zone Comparison - ISO-NE only \$/MWH



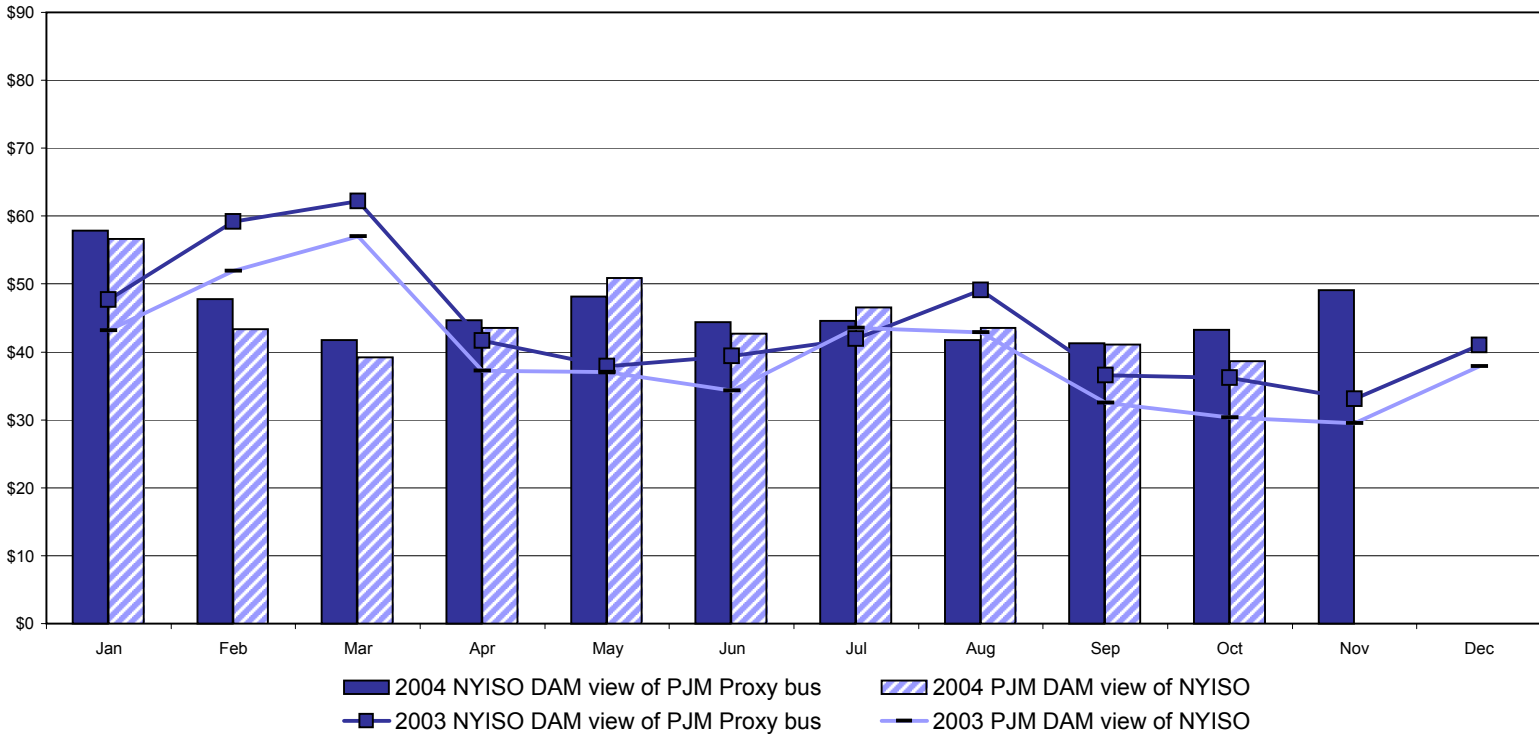
## Real Time External Zone Comparison - ISO-NE only \$/MWH



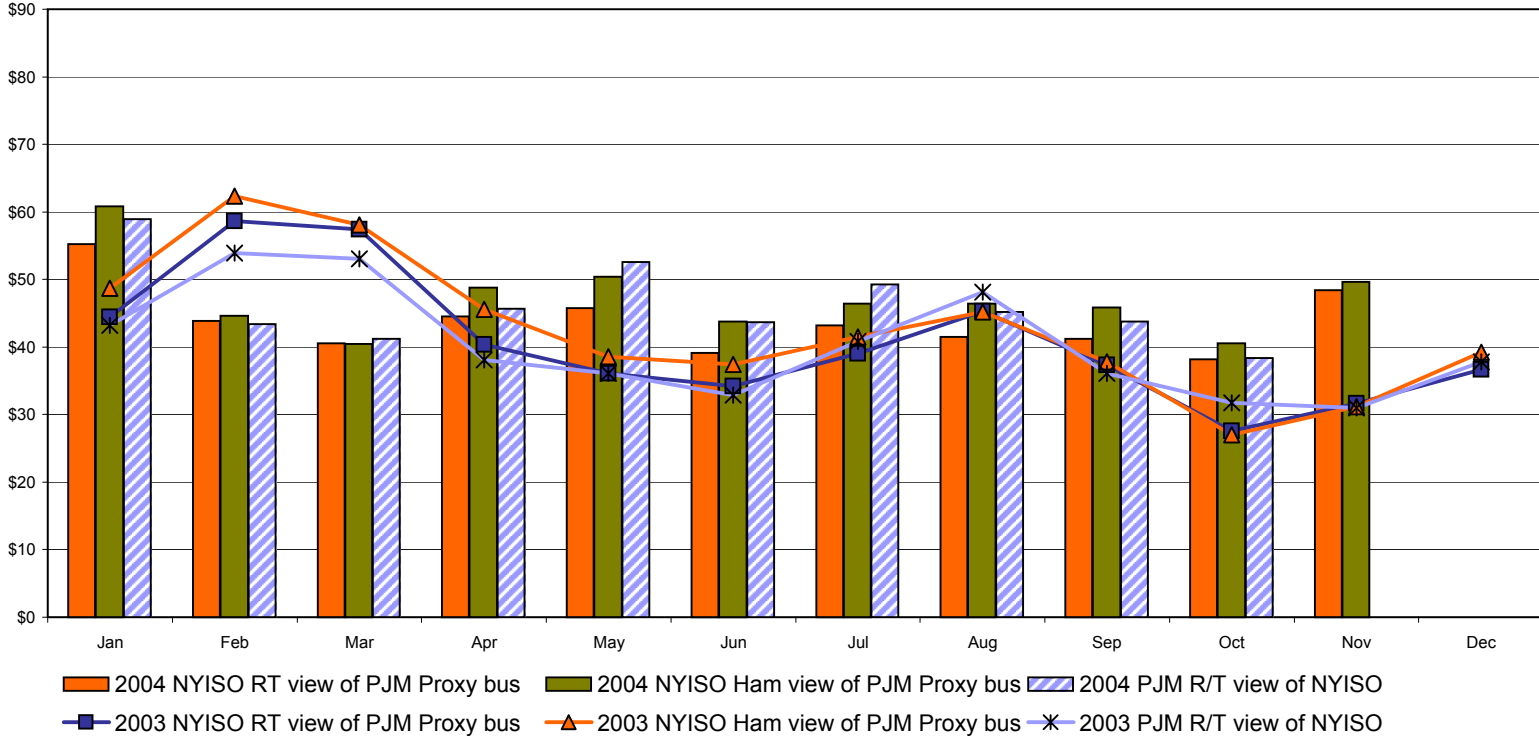
Note:  
 ISO-NE Forecast is an advisory posting @ 18:00 day before  
 \* Effective 3/1/2003 SMD implemented by ISO-NE. The DAM and R/T prices at the Roseton interface are now used.

# External Comparison PJM

## Day Ahead Market External Zone Comparison - PJM only \$/MWH

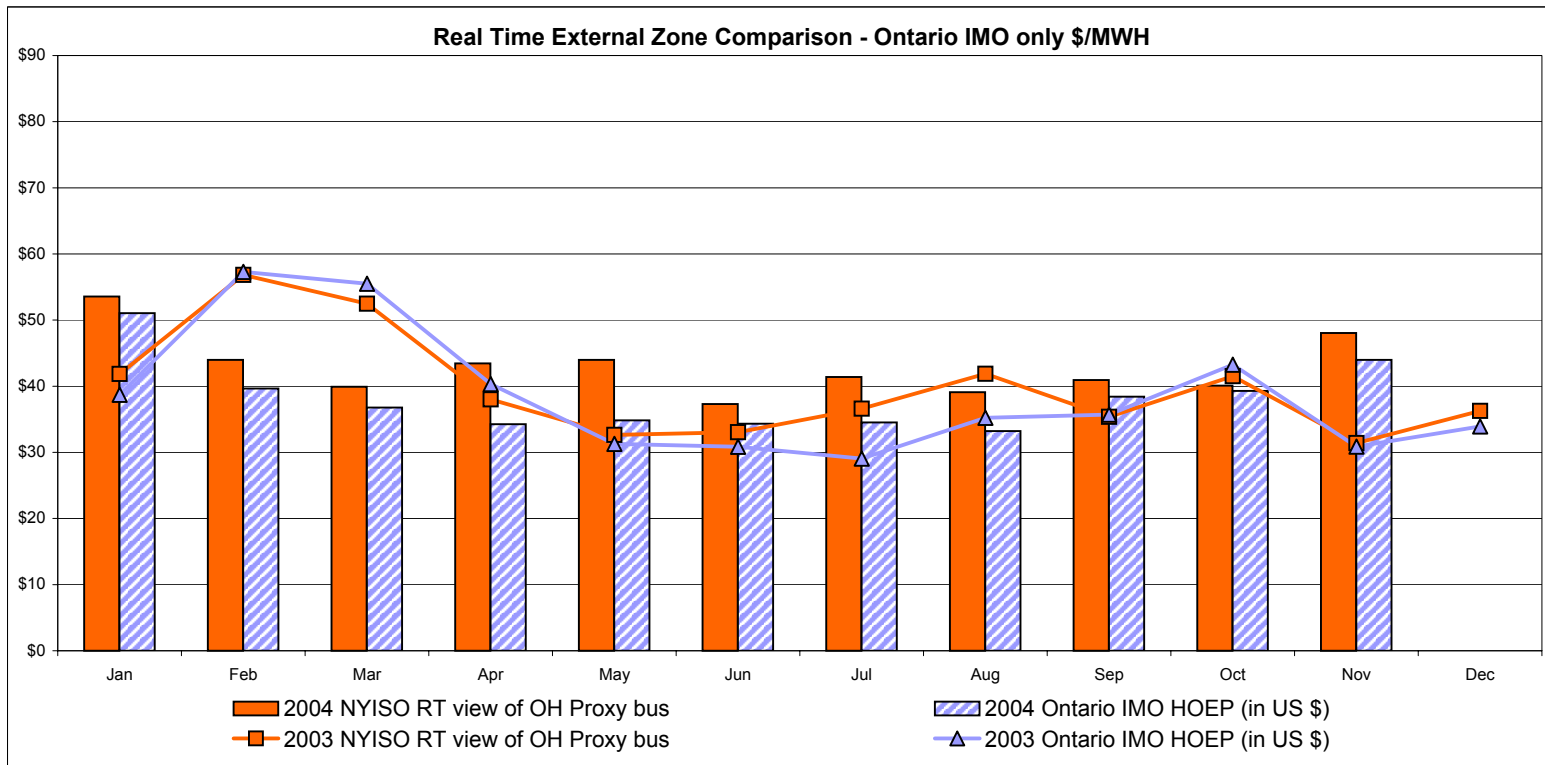
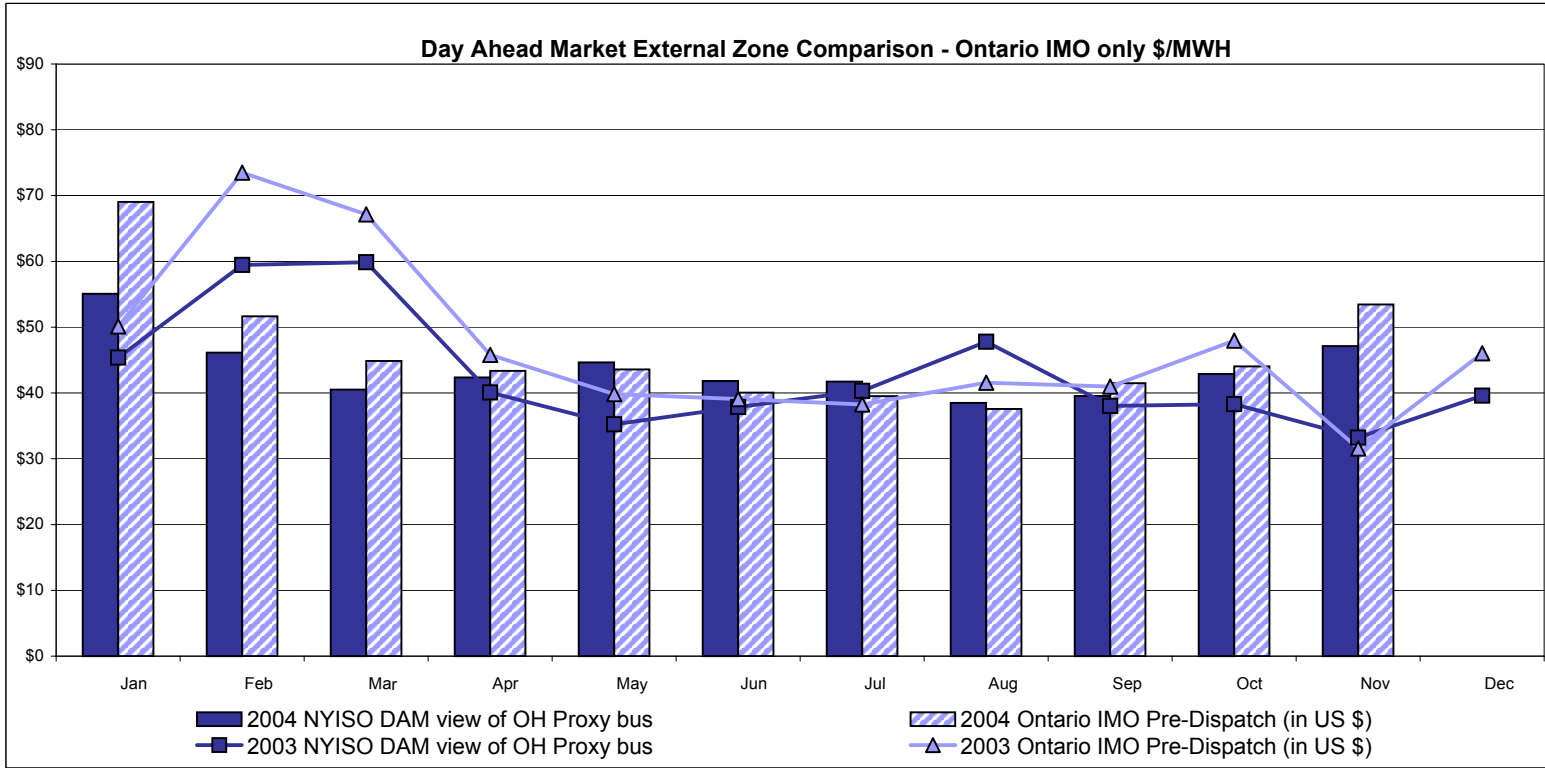


## Real Time External Zone Comparison - PJM only \$/MWH



Note:  
 After 5/1/02 PJM lists only one interface as NYIS  
 Data for November 2004 not yet posted by PJM

# External Comparison Ontario IMO



Notes: Exchange factor used for November 2004 was .84 to US \$  
 HOEP: Hourly Ontario Energy Price  
 Pre-Dispatch: Projected Energy Price  
 Pre-Dispatch data from 8/14/03 Hr 15 thru 8/21/03 not included

## NYISO Price Correction Statistics

### NYISO Price Corrections 2004

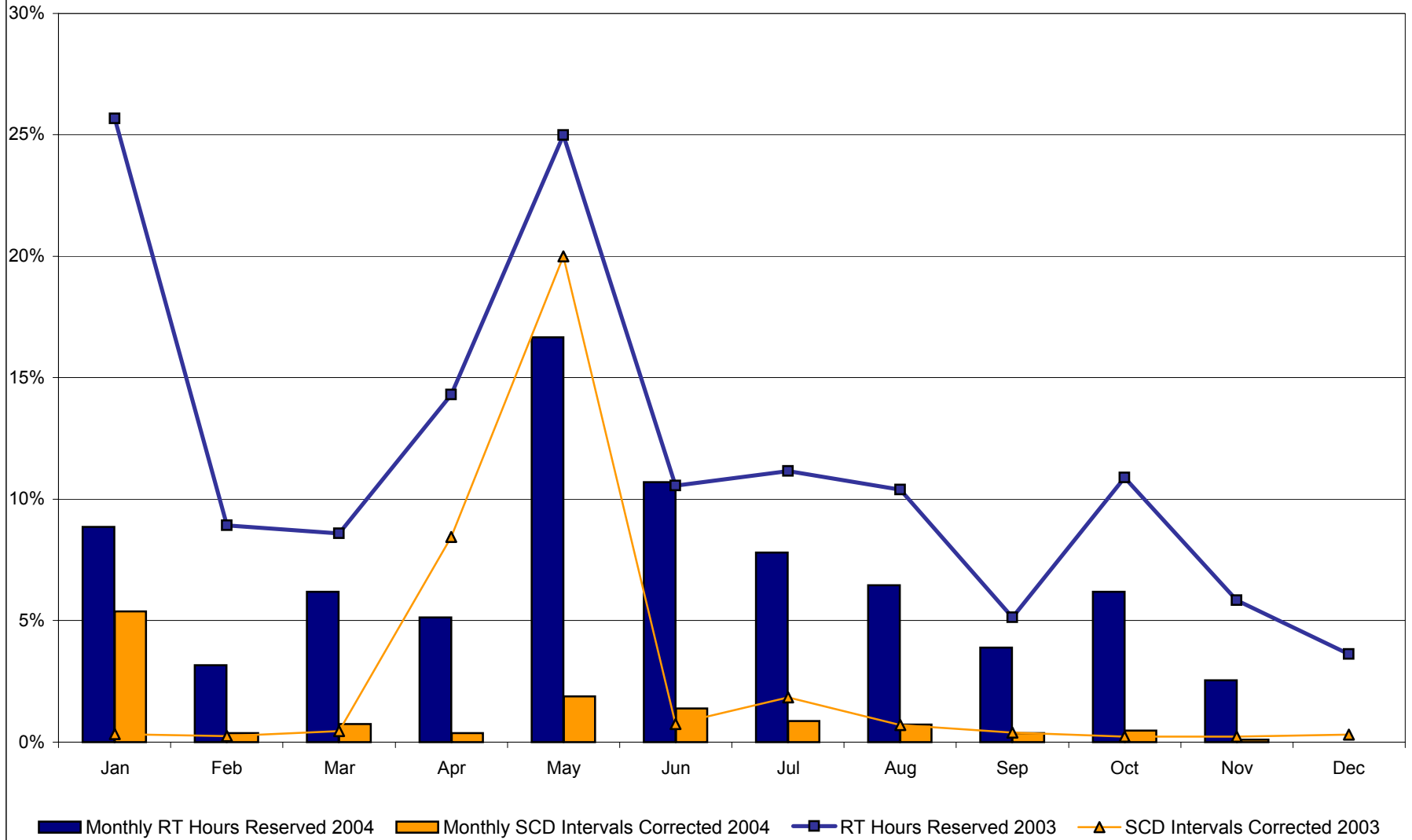
<u>Interval Corrections</u>	January	February	March	April	May	June	July	August	September	October	November	December
Number of Intervals corrected in the month	597	40	83	40	220	156	100	84	42	56	9	
Number of Intervals in the month	11,089	10,495	11,085	10,805	11,740	11,234	11,467	11,552	11,178	11,515	8,669	
Percentage of intervals corrected in the month	5.38%	0.38%	0.75%	0.37%	1.87%	1.39%	0.87%	0.73%	0.38%	0.49%	0.10%	
Number of Intervals corrected Year-to-date	597	637	720	760	980	1,136	1,236	1,320	1,362	1,418	1,427	
Number of Intervals Year-to-date	11,089	21,584	32,669	43,474	55,214	66,448	77,915	89,467	100,645	112,160	120,829	
Percentage of intervals corrected Year-to-date	5.38%	2.95%	2.20%	1.75%	1.77%	1.71%	1.59%	1.48%	1.35%	1.26%	1.18%	
<u>Hours Reserved</u>												
Number of hours reserved in the month	66	22	46	37	124	77	58	48	28	46	14	
Number of hours in the month	744	696	744	720	744	720	744	744	720	744	552	
Percentage of hours reserved in the month	8.87%	3.16%	6.18%	5.14%	16.67%	10.69%	7.80%	6.45%	3.89%	6.18%	2.54%	
Number of hours reserved Year-to-date	66	88	134	171	295	372	430	478	506	552	566	
Number of hours Year-to-date	744	1,440	2,184	2,904	3,648	4,368	5,112	5,856	6,576	7,320	7,872	
Percentage of hours reserved Year-to-date	8.87%	6.11%	6.14%	5.89%	8.09%	8.52%	8.41%	8.16%	7.69%	7.54%	7.19%	
<u>Days Without Corrections</u>												
Days without price corrections in the month	14	20	11	9	8	6	9	12	12	14	16	
Days without price corrections Year-to-date	14	34	45	54	62	68	77	89	101	115	131	

### NYISO Price Corrections 2003

<u>Interval Corrections</u>	January	February	March	April	May	June	July	August	September	October	November	December
Number of Intervals corrected in the month	36	25	49	891	2,254	79	202	71	41	25	25	34
Number of Intervals in the month	10,986	10,197	10,918	10,554	11,274	10,729	10,998	9,973	10,620	11,248	10,629	11,175
Percentage of intervals corrected in the month	0.32%	0.25%	0.45%	8.44%	19.99%	0.74%	1.84%	0.71%	0.39%	0.22%	0.24%	0.30%
Number of Intervals corrected Year-to-date	36	61	110	1,001	3,255	3,334	3,536	3,607	3,648	3,673	3,698	3,732
Number of Intervals Year-to-date	10,986	21,183	32,101	42,655	53,929	64,658	75,656	85,629	96,249	107,497	118,126	129,301
Percentage of intervals corrected Year-to-date	0.32%	0.28%	0.34%	2.35%	6.04%	5.16%	4.67%	4.21%	3.79%	3.42%	3.13%	2.89%
<u>Hours Reserved</u>												
Number of hours reserved in the month	191	60	64	103	186	76	83	69	37	81	42	27
Number of hours in the month	744	672	744	720	744	720	744	664 *	720	744	720	744
Percentage of hours reserved in the month	25.67%	8.93%	8.60%	14.31%	25.00%	10.56%	11.16%	10.39%	5.14%	10.89%	5.83%	3.63%
Number of hours reserved Year-to-date	191	251	315	418	604	680	763	832	869	950	992	1,019
Number of hours Year-to-date	744	1,416	2,160	2,880	3,624	4,344	5,088	5,752	6,472	7,216	7,936	8,680
Percentage of hours reserved Year-to-date	25.67%	17.73%	14.58%	14.51%	16.67%	15.65%	15.00%	14.46%	13.43%	13.17%	12.50%	11.74%
<u>Days Without Corrections</u>												
Days without price corrections in the month	17	15	14	9	8	8	7	5	9	17	15	14
Days without price corrections Year-to-date	17	32	46	55	63	71	78	83	92	109	124	138

\* 80 hours not included due to suspended market during system disruption

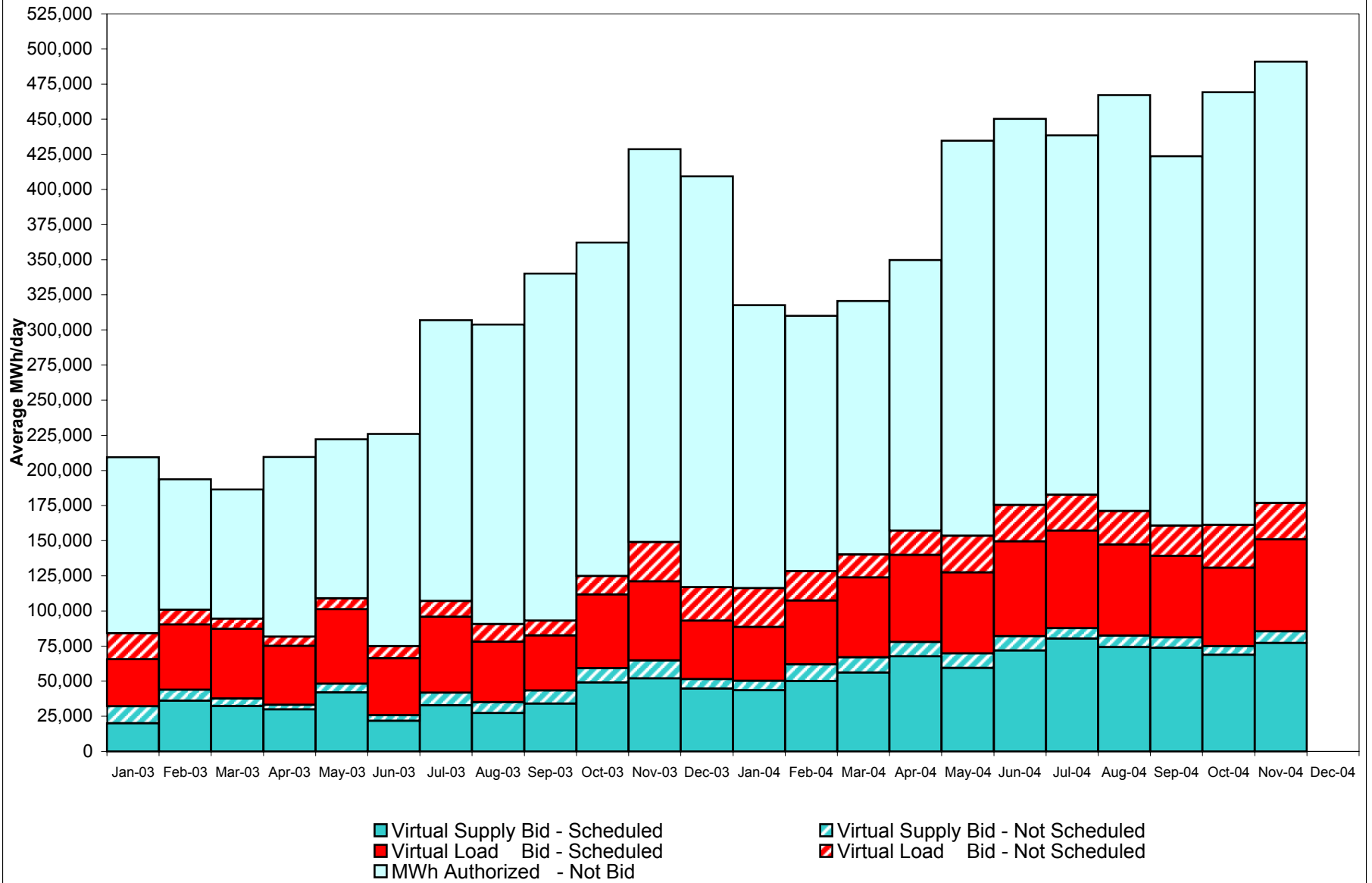
### Percentage of Real-Time Corrections



4-R

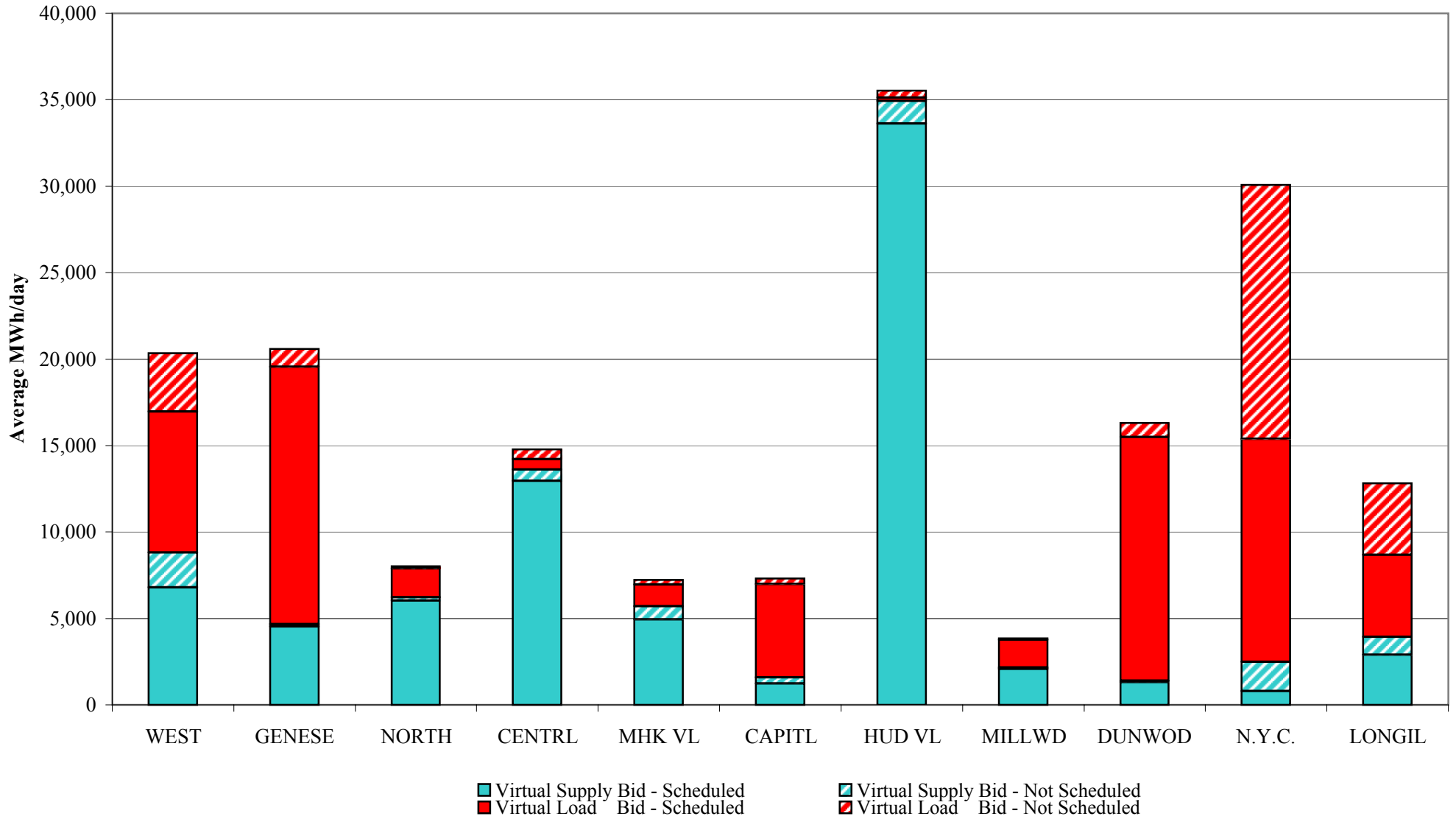
Preliminary thru 11/23/04

**NYISO Virtual Trading  
Average MWh per day**



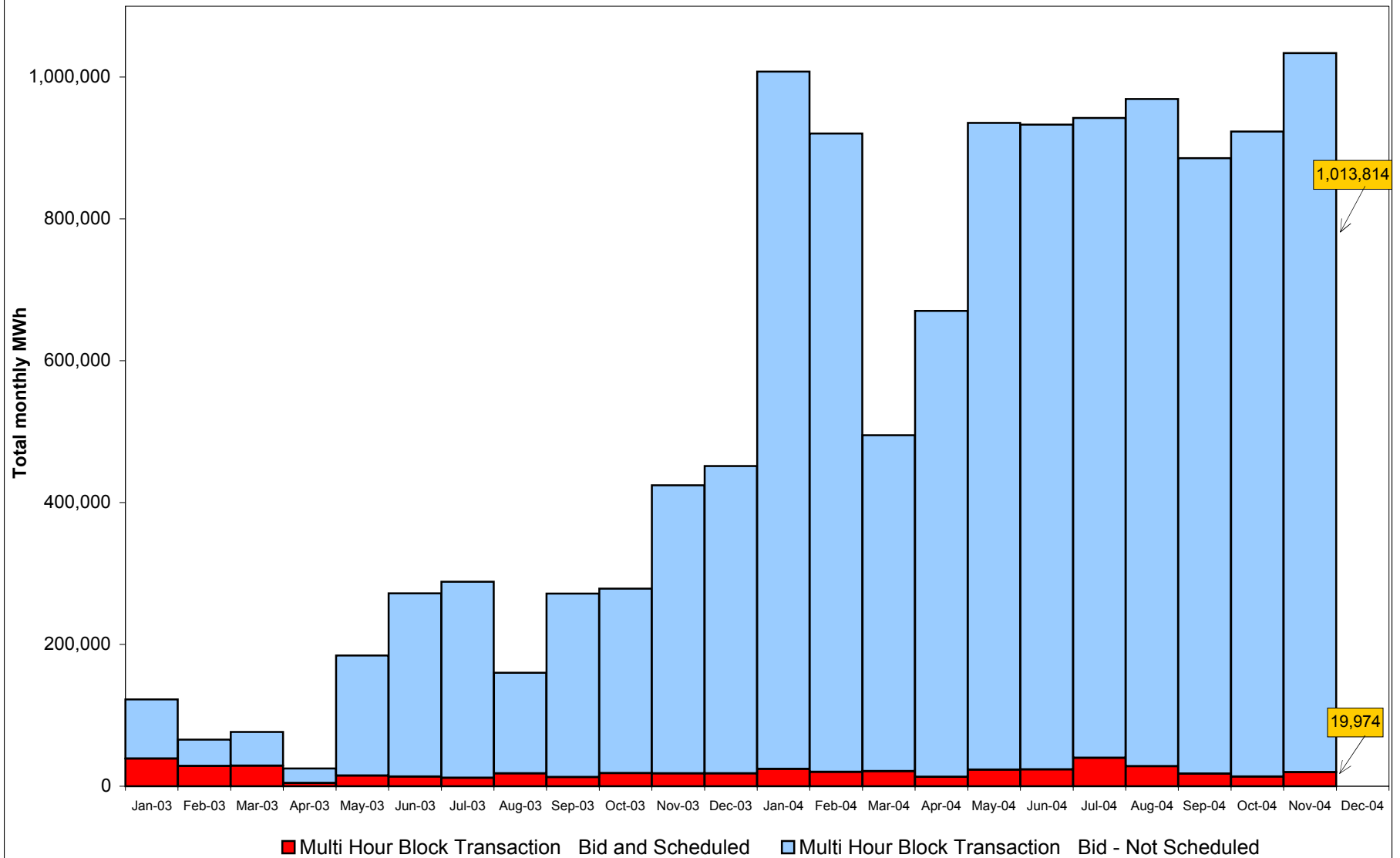
4-S  
Preliminary thru 11/28/04

## Virtual Load and Supply Zonal Statistics November 2004



4-T  
Preliminary thru 11/28/04

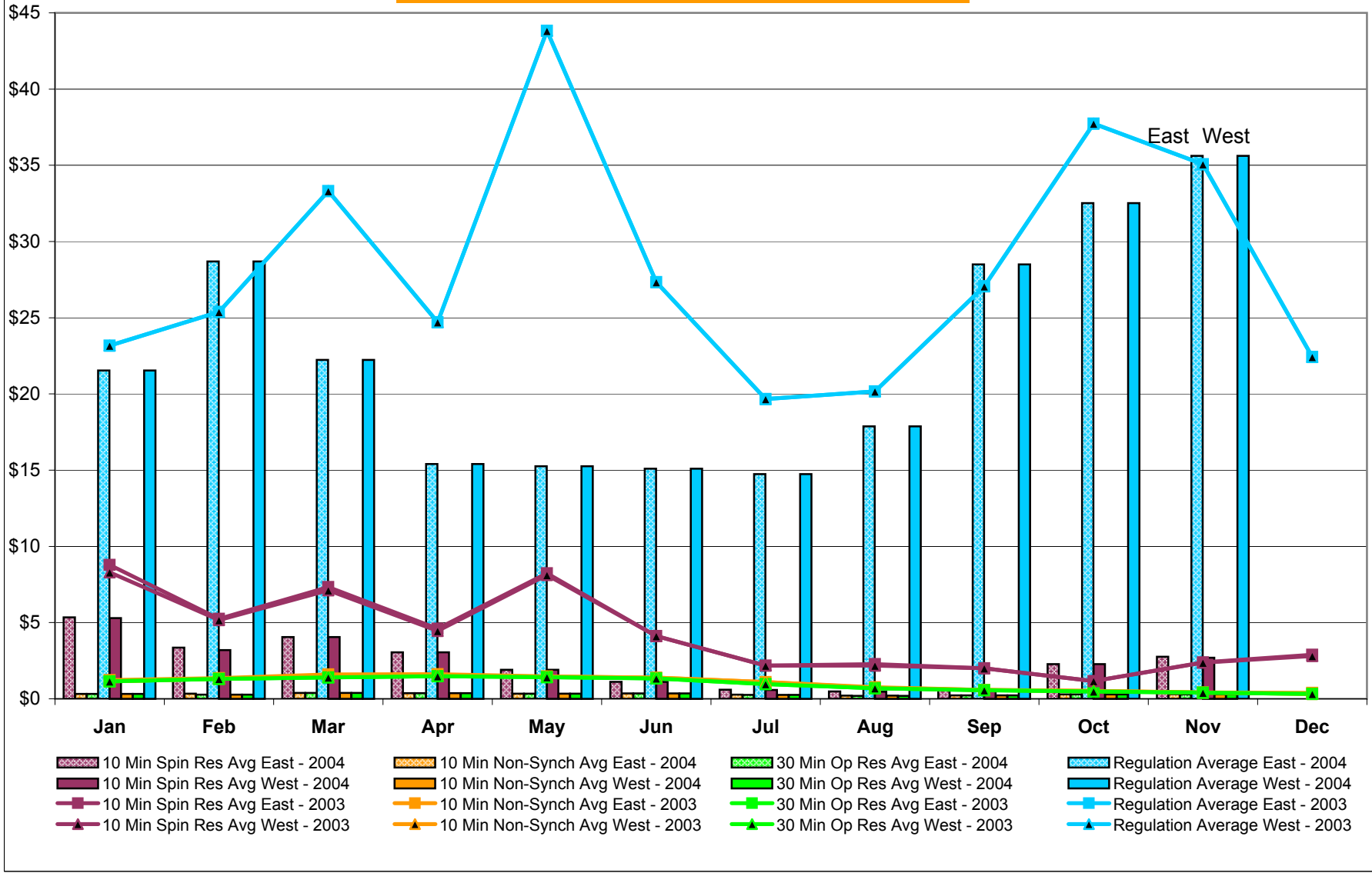
## NYISO Multi Hour Block Transactions Monthly Total MWh



4-U  
Preliminary thru 11/28/04



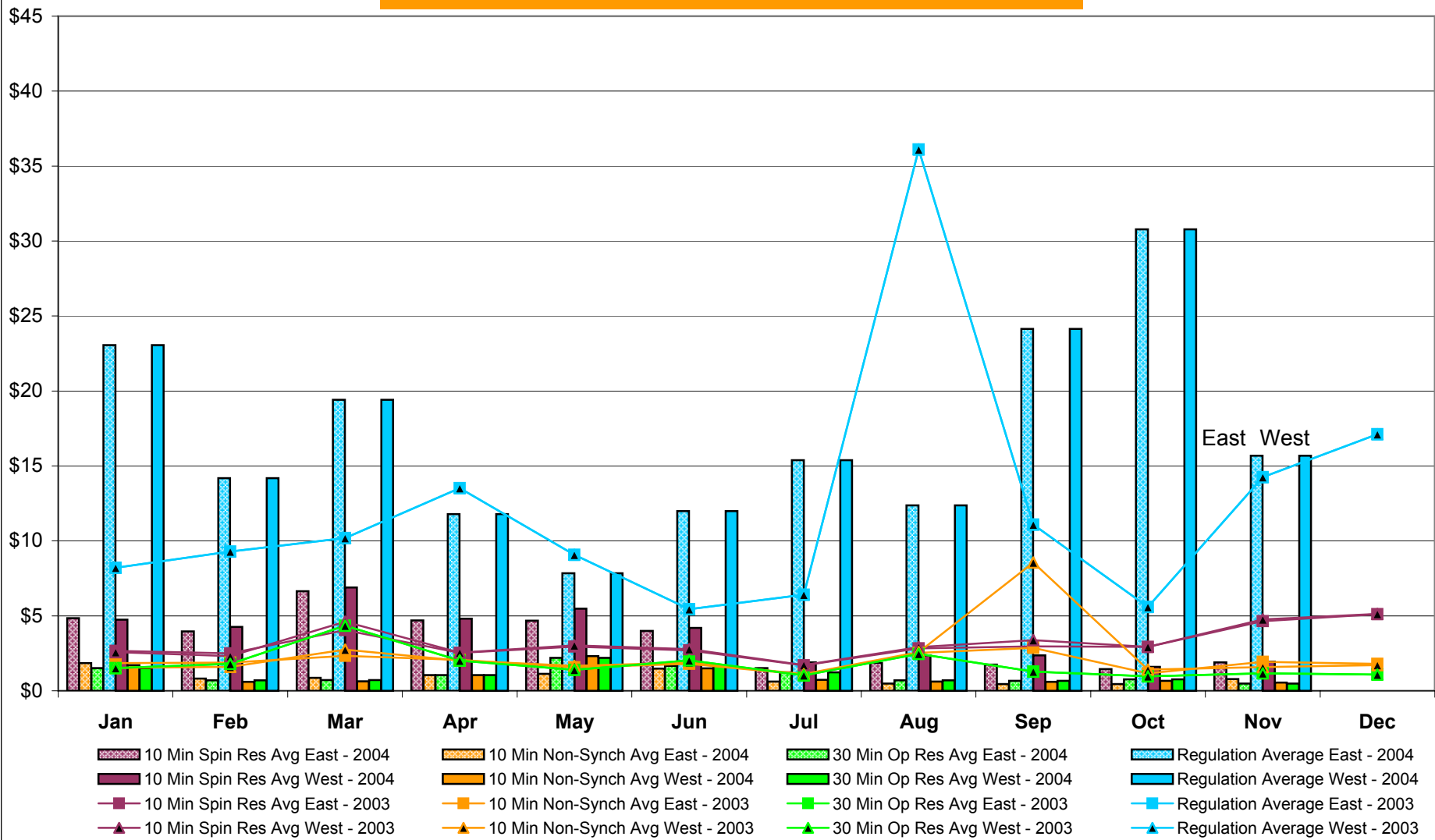
**NYISO Monthly Average Ancillary Service Prices  
Day Ahead Market 2003 - 2004**



4-V

Preliminary thru 11/27/04

## NYISO Monthly Average Ancillary Service Prices BME \* 2003 - 2004



\* Commonly referred to as Hour Ahead Market (HAM)

4-W

Market Monitoring  
Prepared 11/29/2004 13:30

Preliminary thru 11/27/04

## NYISO Markets Ancillary Services Statistics

January    February    March    April    May    June    July    August    September    October    November    December

### ANCILLARY SERVICES Unweighted Price (\$/MWH) 2004

#### Day Ahead Market

10 Min Spin East	5.35	3.36	4.05	3.04	1.91	1.11	0.60	0.49	0.55	2.28	2.76
10 Min Spin West	5.29	3.20	4.05	3.04	1.90	1.11	0.58	0.47	0.54	2.27	2.69
10 Min Non Synch East	0.33	0.33	0.39	0.38	0.34	0.35	0.27	0.21	0.23	0.30	0.30
10 Min Non Synch West	0.32	0.27	0.39	0.38	0.33	0.35	0.26	0.20	0.22	0.29	0.29
30 Min East	0.32	0.27	0.39	0.38	0.33	0.35	0.26	0.20	0.22	0.29	0.29
30 Min West	0.32	0.27	0.39	0.38	0.33	0.35	0.26	0.20	0.22	0.29	0.29
Regulation East	21.54	28.69	22.23	15.41	15.26	15.10	14.74	17.88	28.50	32.51	35.61
Regulation West	21.54	28.69	22.23	15.41	15.26	15.10	14.74	17.88	28.50	32.51	35.61

#### BME\* Market

10 Min Spin East	4.84	3.96	6.65	4.69	4.67	3.99	1.51	1.87	1.75	1.45	1.90
10 Min Spin West	4.75	4.27	6.89	4.82	5.48	4.20	1.90	2.36	2.36	1.60	1.95
10 Min Non Synch East	1.85	0.81	0.87	1.05	1.14	1.49	0.62	0.49	0.45	0.45	0.78
10 Min Non Synch West	1.71	0.60	0.64	1.06	2.31	1.49	0.73	0.61	0.60	0.66	0.54
30 Min East	1.51	0.70	0.72	1.06	2.20	1.67	1.23	0.71	0.67	0.76	0.48
30 Min West	1.51	0.70	0.72	1.06	2.20	1.67	1.23	0.71	0.67	0.76	0.48
Regulation East	23.07	14.18	19.41	11.78	7.85	11.98	15.38	12.36	24.14	30.79	15.68
Regulation West	23.07	14.18	19.41	11.78	7.85	11.98	15.38	12.36	24.14	30.79	15.68

### ANCILLARY SERVICES Unweighted Price (\$/MWH) 2003

#### Day Ahead Market

10 Min Spin East	8.78	5.24	7.33	4.60	8.24	4.12	2.18	2.28	2.01	1.17	2.39	2.89
10 Min Spin West	8.30	5.17	7.12	4.45	8.12	4.11	2.18	2.18	2.00	1.17	2.37	2.81
10 Min Non Synch East	1.22	1.36	1.60	1.61	1.48	1.40	1.09	0.76	0.58	0.52	0.41	0.38
10 Min Non Synch West	1.15	1.32	1.45	1.54	1.45	1.39	1.09	0.72	0.58	0.52	0.40	0.32
30 Min East	1.14	1.30	1.41	1.48	1.42	1.35	0.97	0.69	0.56	0.48	0.40	0.32
30 Min West	1.14	1.30	1.41	1.48	1.42	1.35	0.97	0.69	0.56	0.48	0.40	0.32
Regulation East	23.17	25.39	33.31	24.70	43.82	27.33	19.67	20.17	27.06	37.74	35.07	22.43
Regulation West	23.17	25.39	33.31	24.70	43.82	27.33	19.67	20.17	27.06	37.74	35.07	22.43

#### BME\* Market

10 Min Spin East	2.67	2.50	4.05	2.54	2.95	2.69	1.69	2.82	2.96	2.92	4.65	5.11
10 Min Spin West	2.59	2.32	4.61	2.55	3.04	2.78	1.72	2.91	3.38	2.94	4.76	5.13
10 Min Non Synch East	1.85	1.89	2.34	2.07	1.57	1.80	1.09	2.53	2.87	1.17	1.92	1.80
10 Min Non Synch West	1.53	1.59	2.75	2.02	1.67	1.88	1.11	2.58	8.55	1.41	1.57	1.71
30 Min East	1.52	1.80	4.34	2.02	1.40	2.03	1.04	2.46	1.28	0.97	1.17	1.07
30 Min West	1.52	1.80	4.34	2.02	1.40	2.03	1.04	2.46	1.28	0.97	1.17	1.07
Regulation East	8.21	9.28	10.19	13.52	9.08	5.44	6.41	36.11	11.09	5.60	14.24	17.12
Regulation West	8.21	9.28	10.19	13.52	9.08	5.44	6.41	36.11	11.09	5.60	14.24	17.12

\* Commonly Referred to as Hour Ahead Market (HAM)

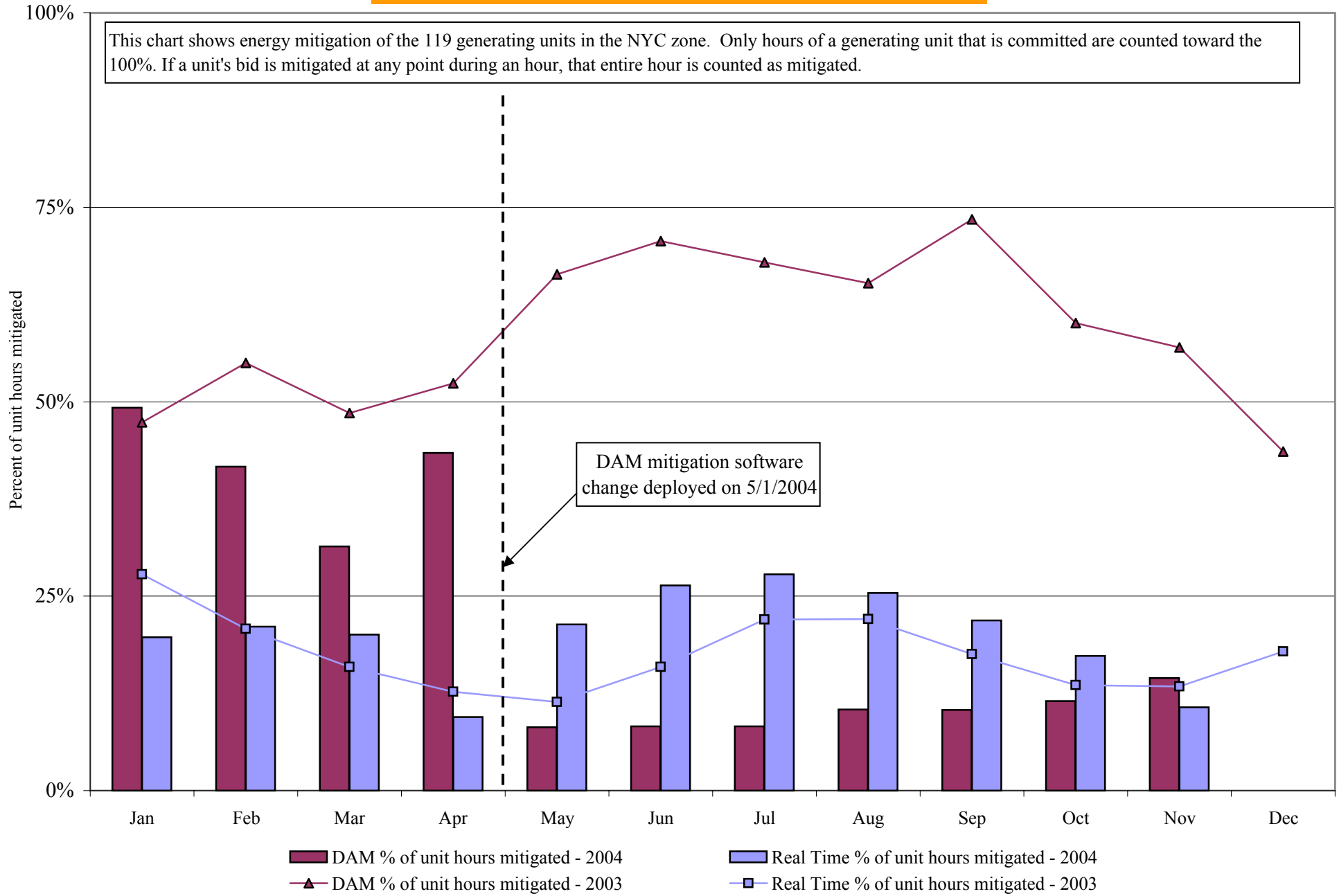
4-X

Market Monitoring  
Prepared 11/29/2004 13:30

Preliminary thru 11/27/04

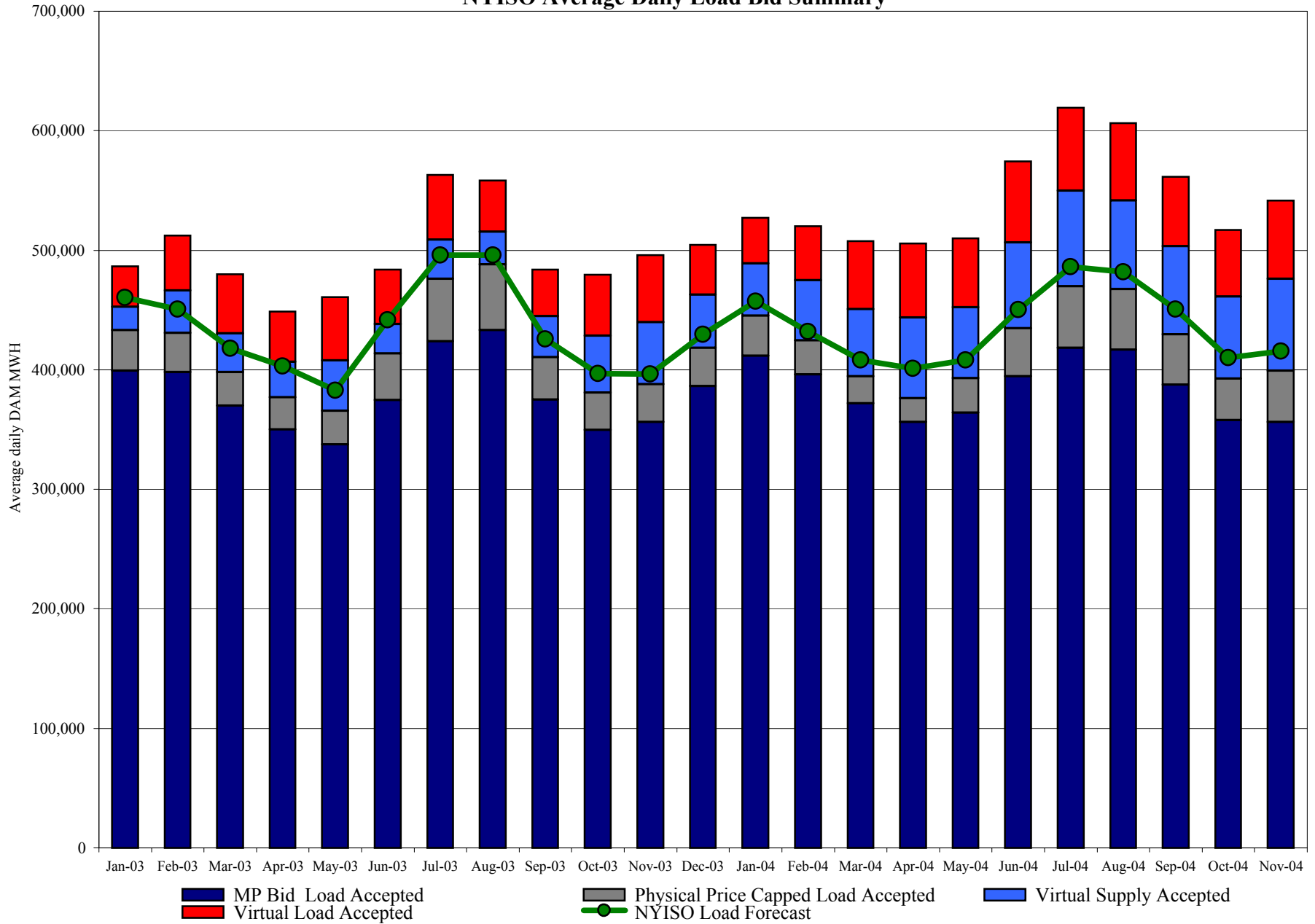
# NYISO In City Energy Mitigation (NYC Zone) 2003-2004

## Percentage of committed unit-hours mitigated



4-Y  
Preliminary thru 11/28/04

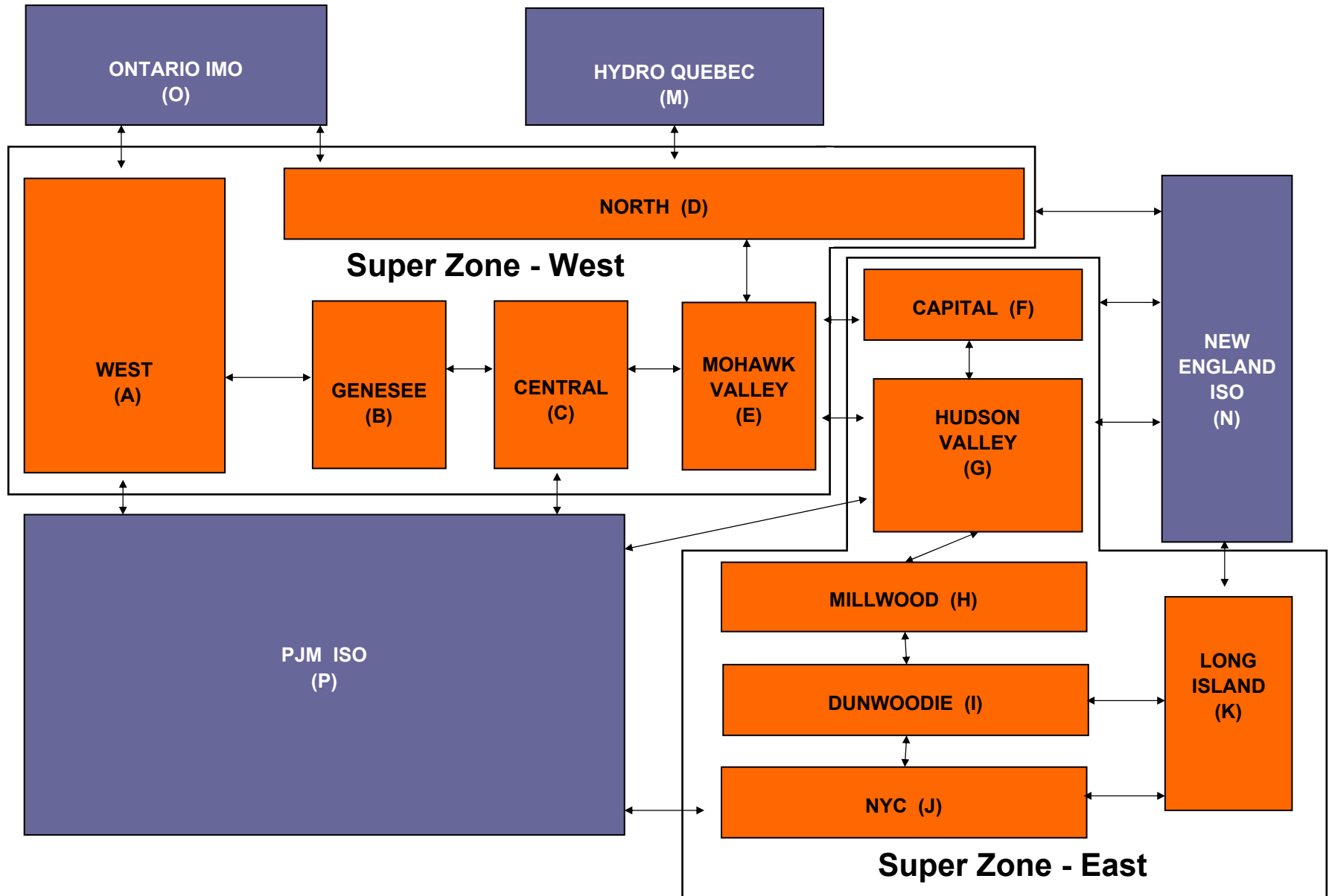
# NYISO Average Daily Load Bid Summary



4 - Z

Preliminary thru 11/28/04

# NYISO LBMP ZONES



# Environmental Advisory Council

---

- Inaugural meeting held November 18, 2004;
- Future meetings open to market participants:
  - *Some portion may be executive session*
- Web site link to biographies of council members, agendas and meeting synopsis and distributed materials to be available early to mid-December;
- NYISO Board requested additional council members, with environmental studies backgrounds:
  - *New members are Karen Palmer of Resources for the Future, and Bill Schulz of Cornell.*