

---

# **NYISO Market Operations Report**

*Business Issues Committee Meeting*

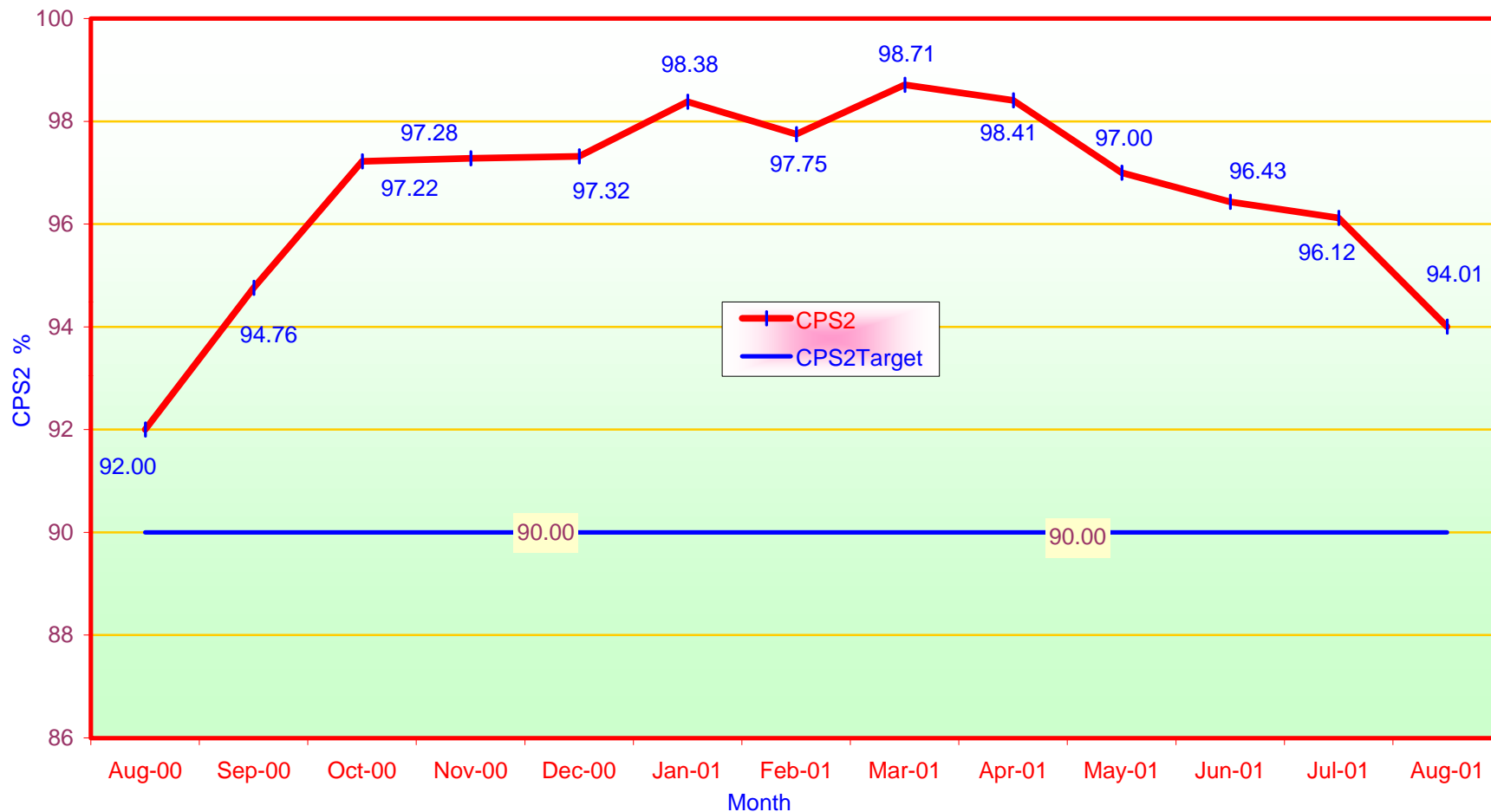
*September 27, 2001*

*Chuck King, NYISO VP Market Services*

# Market Operations Report

- 1) Reliability Indicators
  - *NERC Criteria (CPS-2 Curve)*
- 2) Market Performance Highlights
- 3) Peak Load Analysis (Actual vs. Forecast & Temp Adj)
- 4) NYISO 2001 Customer Satisfaction Survey
- 5) Sector Meeting Schedule

**NERC Control Performance Standard**  
**NYISO Compliance**  
**Year 2000/2001**

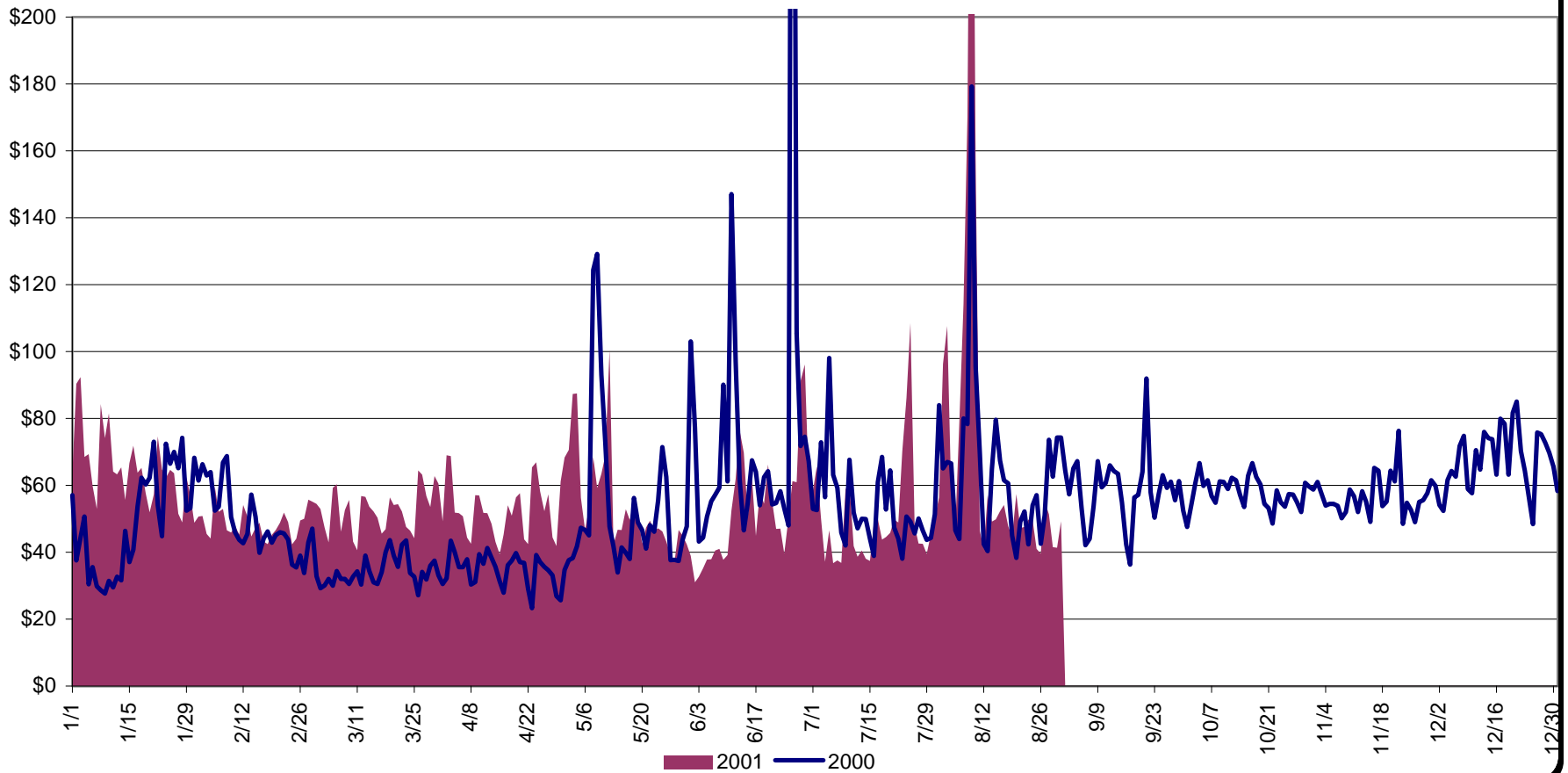


**CPS2 for August=94.01 % Compliance Threshold=90%**  
**CPS2 measures excessive unscheduled power flow resulting from large Area Control Error(ACE)**

**Average Daily NYISO - Administered Total Price (Energy & Ancillary Services)**  
**2000 Annual Average \$57.81/MWH**  
**Jan to August 2000 Average \$56.54/MWH**  
**Jan to August 2001 Average \$59.61/MWH**

June 26, 2000 Daily Average 414.14

August 9, 2001 Daily Average 337.84



### NYISO Markets 2001 Energy Statistics

	January	February	March	April	May	June	July	August	September	October	November	December
<b><u>DAY AHEAD LBMP</u></b>												
Unweighted Price	\$56.41	\$42.09	\$46.94	\$45.53	\$46.19	\$42.47	\$40.99	\$57.96				
Standard Deviation	\$17.87	\$9.65	\$11.93	\$14.27	\$15.77	\$21.07	\$14.15	\$64.21				
Load Wtg.Price	\$58.34	\$43.25	\$48.23	\$47.48	\$48.57	\$46.48	\$43.26	\$64.71				
<b><u>BME * LBMP</u></b>												
Unweighted Price	\$54.40	\$47.43	\$53.87	\$56.37	\$199.56	\$63.91	\$277.09	\$183.30				
Standard Deviation	\$16.85	\$15.62	\$52.54	\$39.25	\$3,150.85	\$125.01	\$2,893.71	\$1,232.69				
Load Wtg.Price	\$55.95	\$48.86	\$55.98	\$59.22	\$218.73	\$71.44	\$356.20	\$238.34				
<b><u>REAL TIME LBMP</u></b>												
Unweighted Price	\$50.15	\$41.84	\$48.43	\$41.94	\$47.81	\$39.23	\$41.42	\$58.77				
Standard Deviation	\$19.32	\$22.21	\$35.68	\$28.52	\$51.99	\$38.69	\$39.51	\$67.56				
Load Wtg.Price	\$51.66	\$42.94	\$50.27	\$44.44	\$51.16	\$43.61	\$45.98	\$65.48				
Average Daily Energy Sendout/Month GWh	443	434	423	388	397	460	460	512				

### NYISO Markets 2000 Energy Statistics

	January	February	March	April	May	June	July	August	September	October	November	December
<b><u>DAY AHEAD LBMP</u></b>												
Unweighted Price	\$38.64	\$37.09	\$29.24	\$29.55	\$37.73	\$57.96	\$40.66	\$50.18	\$46.47	\$51.91	\$50.07	\$58.34
Standard Deviation	\$16.64	\$12.75	\$8.22	\$9.57	\$16.65	\$67.35	\$18.96	\$37.40	\$15.52	\$12.64	\$9.67	\$18.03
Load Wtg.Price	\$40.09	\$38.31	\$30.05	\$30.60	\$39.80	\$64.23	\$43.32	\$54.34	\$48.50	\$53.46	\$51.13	\$60.81
<b><u>BME * LBMP</u></b>												
Unweighted Price	\$52.24	\$52.40	\$27.44	\$30.95	\$135.39	\$230.91	\$40.26	\$121.45	\$59.17	\$55.44	\$49.31	\$61.57
Standard Deviation	\$391.99	\$244.80	\$21.97	\$14.13	\$5,206.45	\$2,355.22	\$34.84	\$1,207.51	\$92.35	\$21.42	\$14.92	\$31.11
Load Wtg.Price	\$55.95	\$55.25	\$28.21	\$31.93	\$210.52	\$290.60	\$42.26	\$137.53	\$61.96	\$57.29	\$50.59	\$65.35
<b><u>REAL TIME LBMP</u></b>												
Unweighted Price	\$49.46	\$34.52	\$27.40	\$27.04	\$41.17	\$46.26	\$36.81	\$48.86	\$50.12	\$51.74	\$48.89	\$58.28
Standard Deviation	\$99.49	\$20.65	\$20.80	\$13.14	\$74.60	\$91.83	\$21.87	\$59.58	\$53.73	\$19.28	\$19.89	\$48.47
Load Wtg.Price	\$54.16	\$36.06	\$28.57	\$28.11	\$48.07	\$53.28	\$39.42	\$54.84	\$54.11	\$53.62	\$50.41	\$60.38
Average Daily Energy Sendout/Month GWh	444	431	404	391	400	456	450	468	432	399	415	450

\* Commonly referred as Hour Ahead Market (HAM)

## NYISO Markets 2001 Transactions

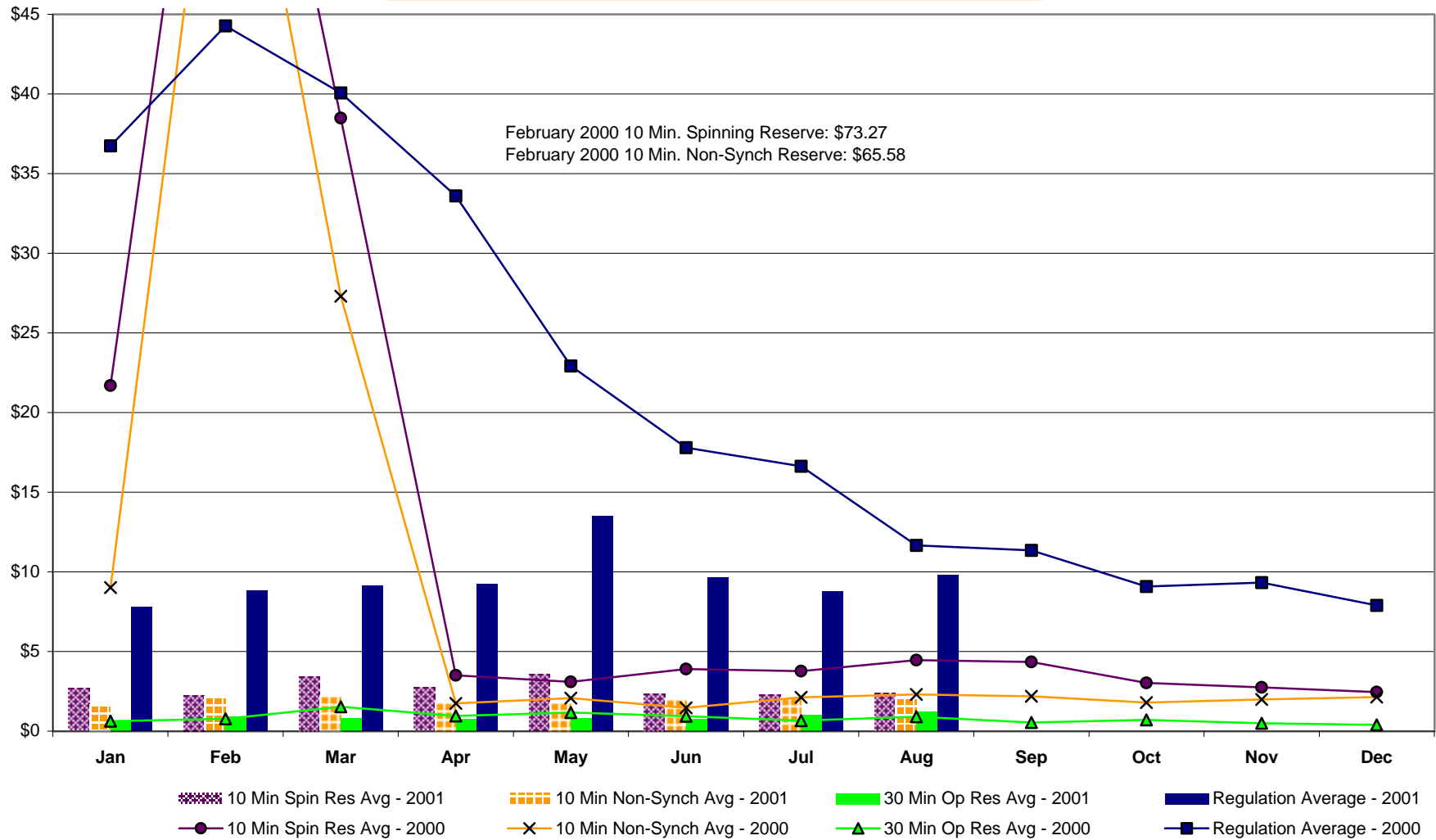
	January	February	March	April	May	June	July	August	September	October	November	December
<b>Transactions by Market</b>												
DAM LSE Internal LBMP Energy Sales	41%	39%	37%	36%	38%	43%	52%	53%				
DAM External TC LBMP Energy Sales	3%	2%	1%	2%	1%	2%	1%	2%				
DAM Bilateral - Internal Bilaterals	50%	51%	55%	55%	54%	51%	44%	41%				
DAM Bilateral - Import/Non-LBMP Market Bilaterals	1%	1%	0%	0%	0%	0%	0%	1%				
DAM Bilateral - Export/Non-LBMP Market Bilaterals	1%	1%	1%	1%	1%	1%	1%	1%				
DAM Bilateral - Wheel Through Bilaterals	4%	6%	5%	5%	4%	3%	2%	2%				
<b>Day Ahead Market</b>	100%	100%	100%	100%	100%	100%	100%	100%				
Balancing Energy LSE Internal LBMP Energy Sales	63%	13%	97%	-1%	65%	-4%	74%	85%				
Balancing Energy External TC LBMP Energy Sales	56%	81%	26%	39%	59%	93%	20%	11%				
Balancing Energy Bilateral - Internal Bilaterals	-8%	-1%	-7%	138%	-2%	19%	8%	0%				
Balancing Energy Bilateral - Import/Non-LBMP Market Bilaterals	2%	23%	11%	6%	2%	14%	6%	15%				
Balancing Energy Bilateral - Export/Non-LBMP Market Bilaterals	0%	0%	0%	0%	0%	2%	1%	1%				
Balancing Energy Bilateral - Wheel Through Bilaterals	-13%	-17%	-27%	-82%	-24%	-24%	-8%	-11%				
<b>Balancing Energy *</b>	100%	100%	100%	100%	100%	100%	100%	100%				
<b>Transactions Summary</b>												
LBMP	45%	42%	40%	38%	41%	45%	54%	56%				
Internal Bilaterals	49%	51%	54%	57%	54%	51%	43%	41%				
Import Bilaterals	1%	1%	1%	0%	0%	1%	0%	1%				
Export Bilaterals	1%	1%	1%	1%	1%	1%	1%	1%				
Wheels Through	4%	5%	4%	4%	4%	2%	1%	1%				
<b>Market Share of Total Load</b>												
<b>Day Ahead Market</b>	97.71%	98.07%	98.03%	98.65%	98.20%	98.66%	97.35%	97.47%				
<b>Balancing Energy *</b>	2.29%	1.93%	1.97%	1.35%	1.80%	1.34%	2.65%	2.53%				
<b>Total MWH</b>	14,684,835	13,195,754	13,898,304	11,960,273	13,211,577	14,536,199	14,749,317	16,502,710				

## NYISO Markets 2000 Transactions

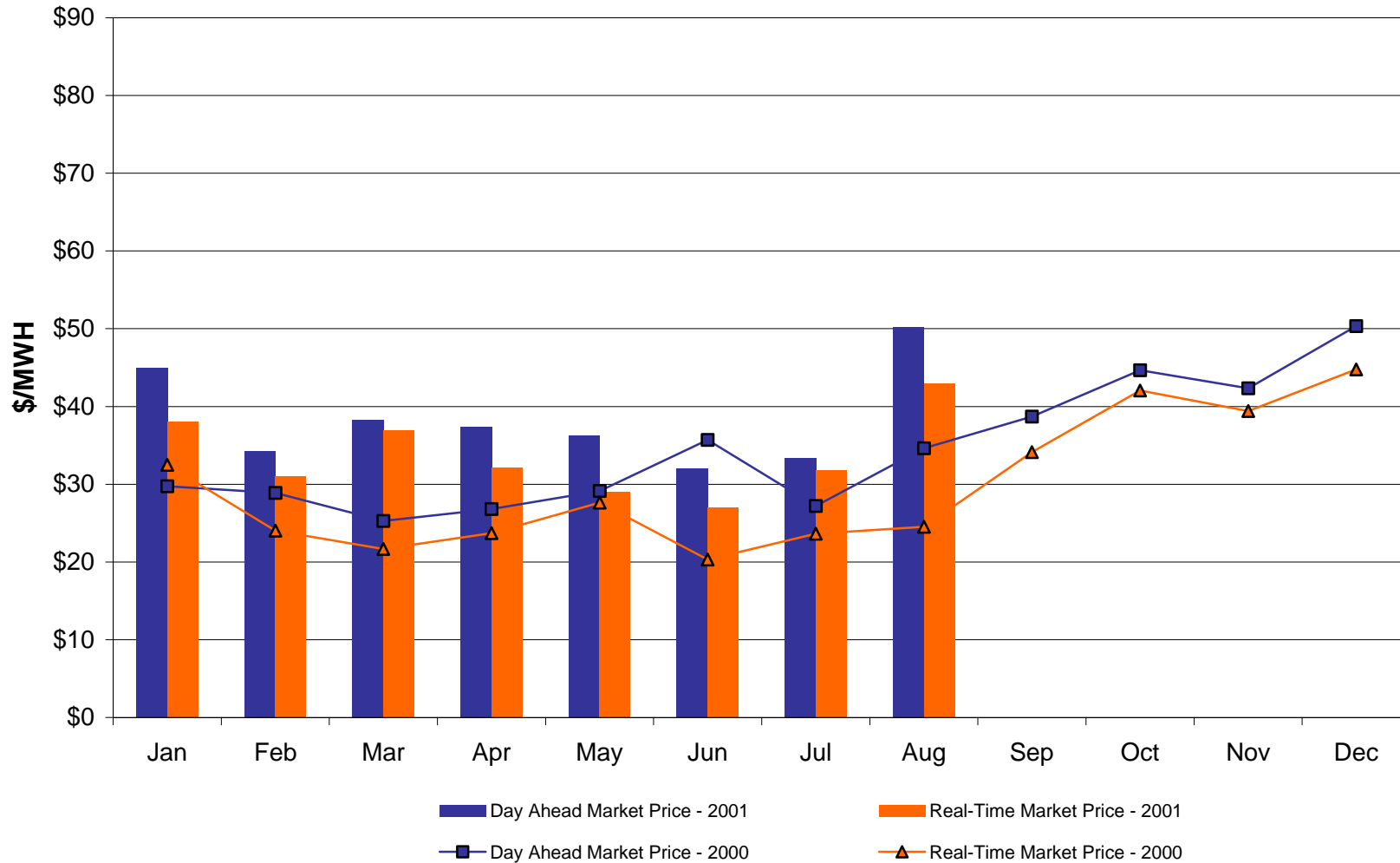
	January	February	March	April	May	June	July	August	September	October	November	December
<b>Transactions Summary</b>												
LBMP	30%	31%	35%	37%	42%	44%	45%	45%	50%	48%	43%	47%
Internal Bilaterals	64%	63%	60%	58%	52%	51%	50%	51%	45%	48%	51%	48%
Import Bilaterals	2%	2%	2%	2%	1%	1%	1%	1%	2%	1%	1%	1%
Export Bilaterals	1%	1%	1%	1%	1%	1%	2%	1%	1%	2%	2%	0%
Wheels Through	2%	3%	1%	1%	4%	3%	3%	2%	2%	1%	3%	3%
<b>Market Share of Total Load</b>												
<b>Day Ahead Market</b>	97.97%	97.85%	97.25%	96.18%	98.52%	98.70%	101.33%	102.12%	96.98%	98.29%	96.11%	96.22%
<b>Balancing Energy *</b>	2.03%	2.15%	2.75%	3.82%	1.48%	1.30%	-1.33%	-2.12%	3.02%	1.71%	3.89%	3.78%
<b>Total MWH</b>	13,979,215	12,933,930	12,616,286	11,800,570	12,940,566	13,964,207	14,199,309	15,011,759	13,321,117	12,516,751	12,635,197	14,740,664

\* Balancing Energy: Load(MW) purchased at Real Time LBMP.

## NYISO Monthly Average Ancillary Service Prices Day Ahead Market 2000 - 2001

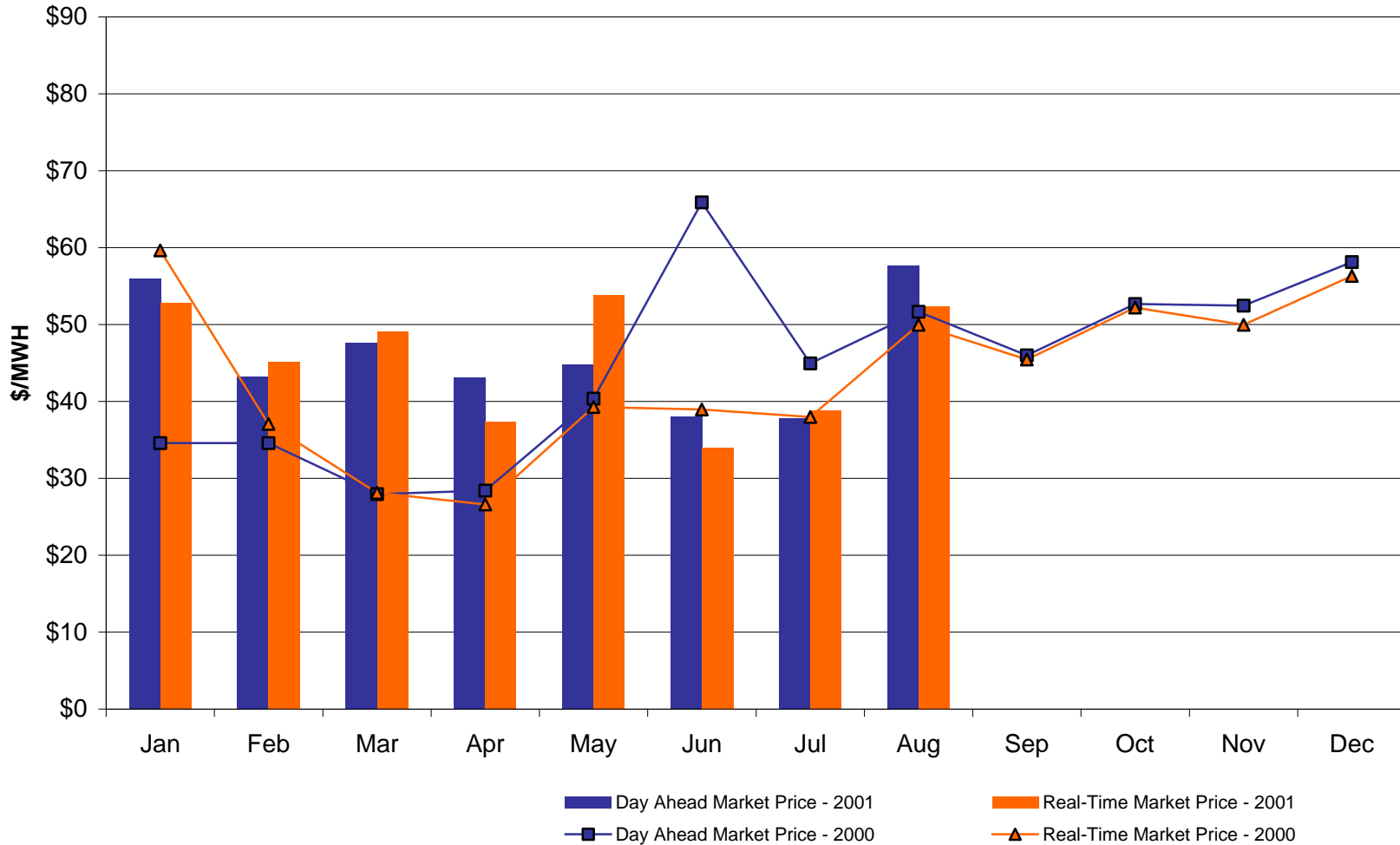


## West Zone A Monthly Average LBMP Prices 2000 - 2001

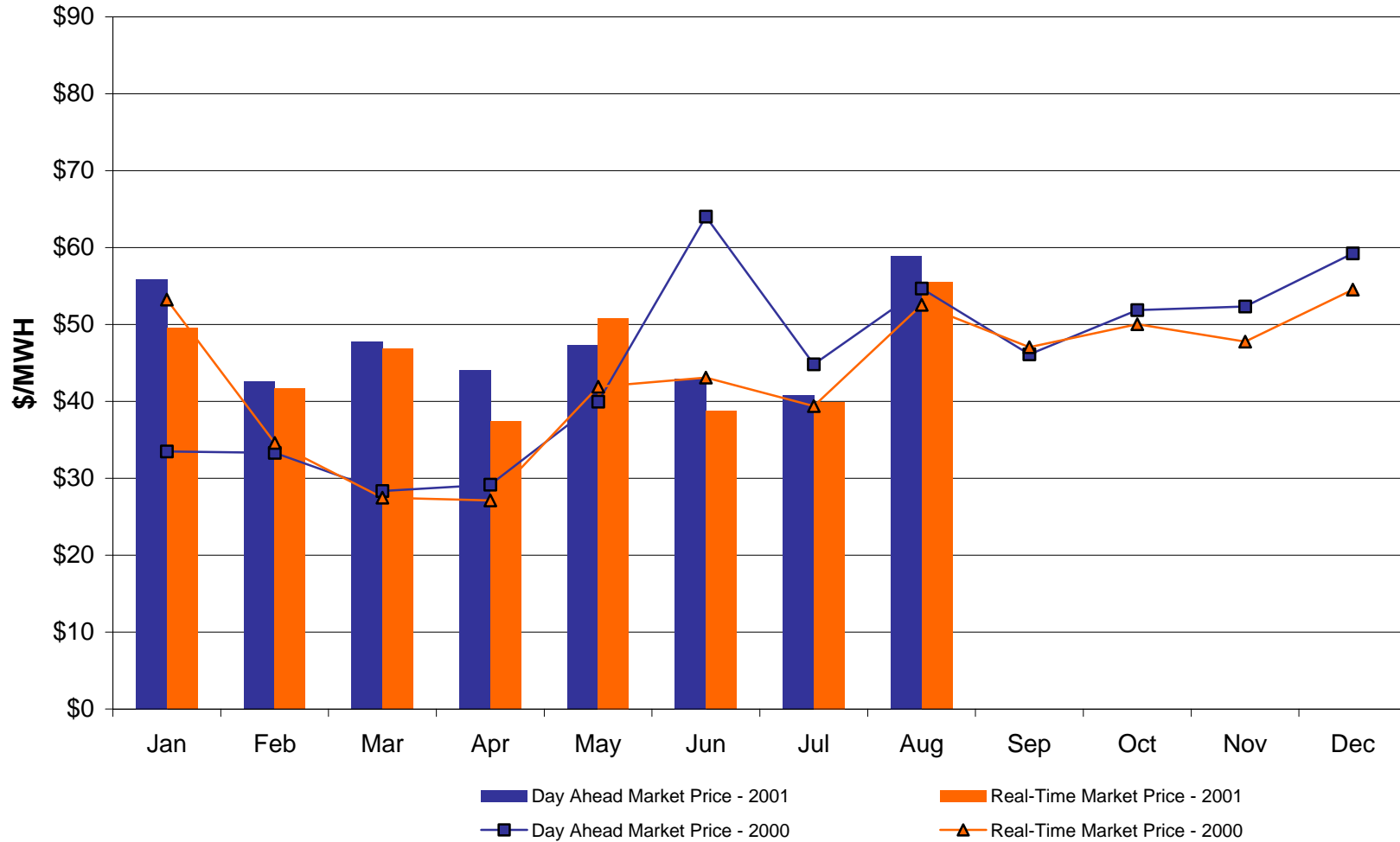




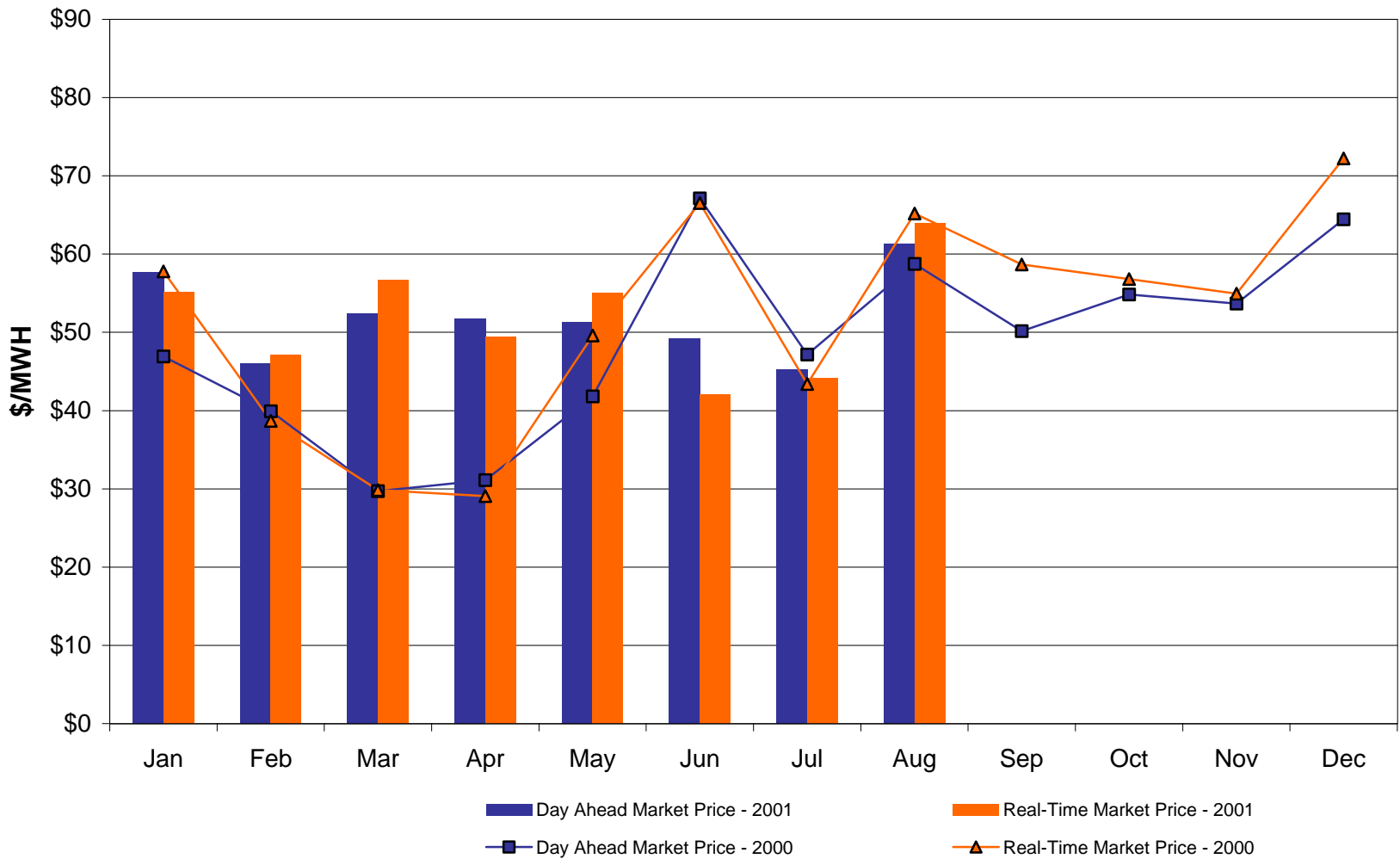
## Capital Zone F Monthly Average LBMP Prices 2000 - 2001



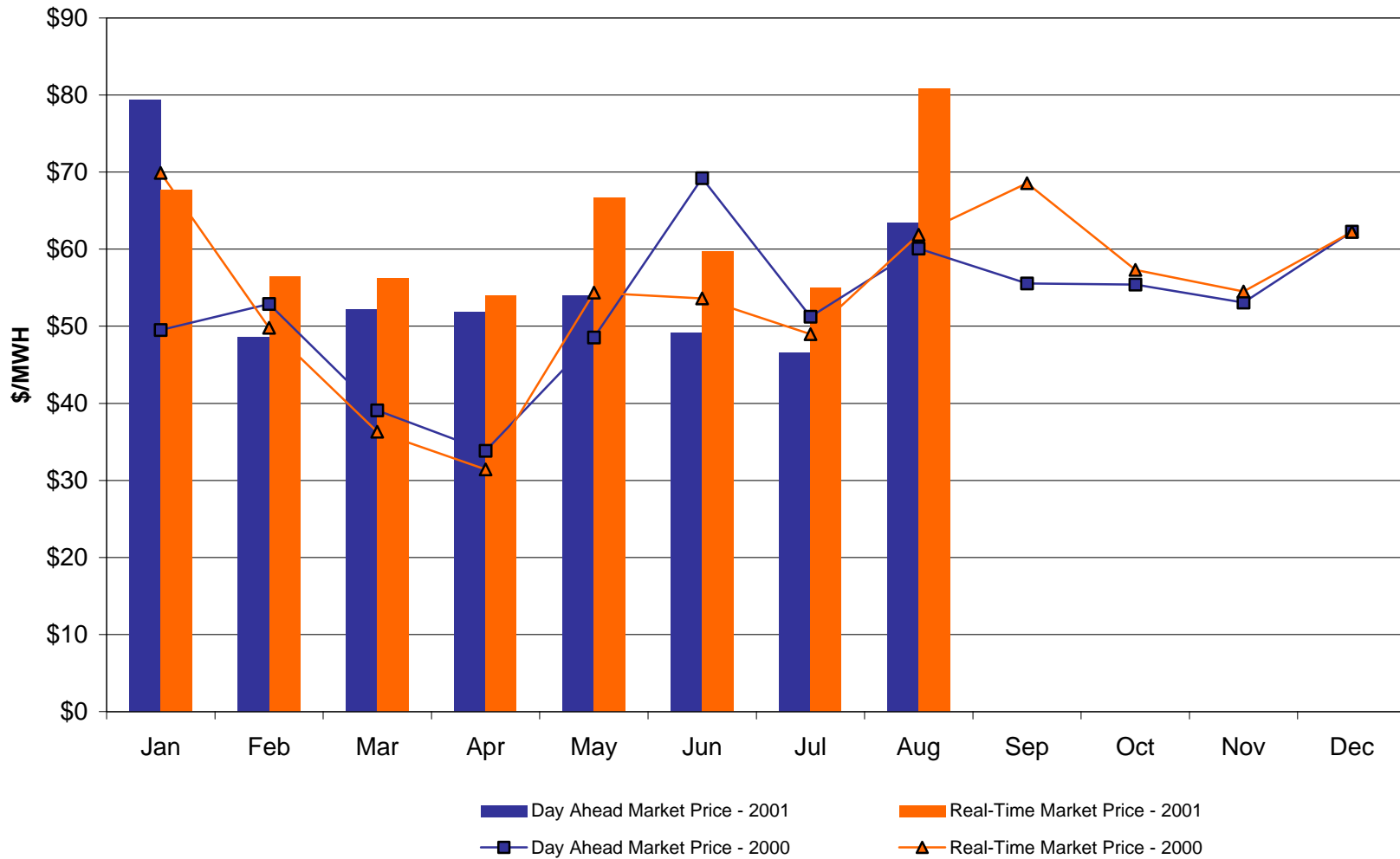
## Hudson Valley Zone G Monthly Average LBMP Prices 2000 - 2001



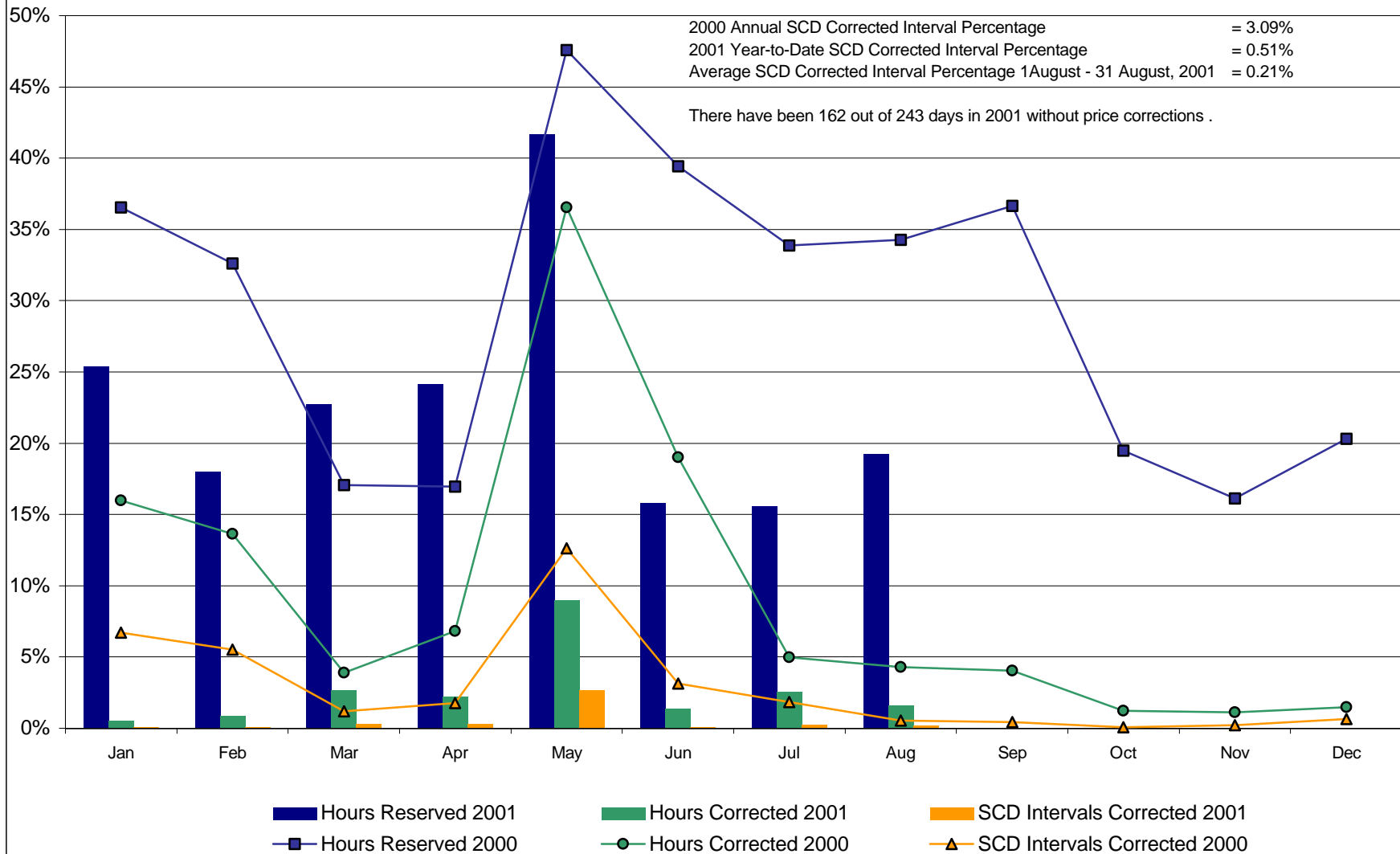
## NYC Zone J Monthly Average LBMP Prices 2000 - 2001



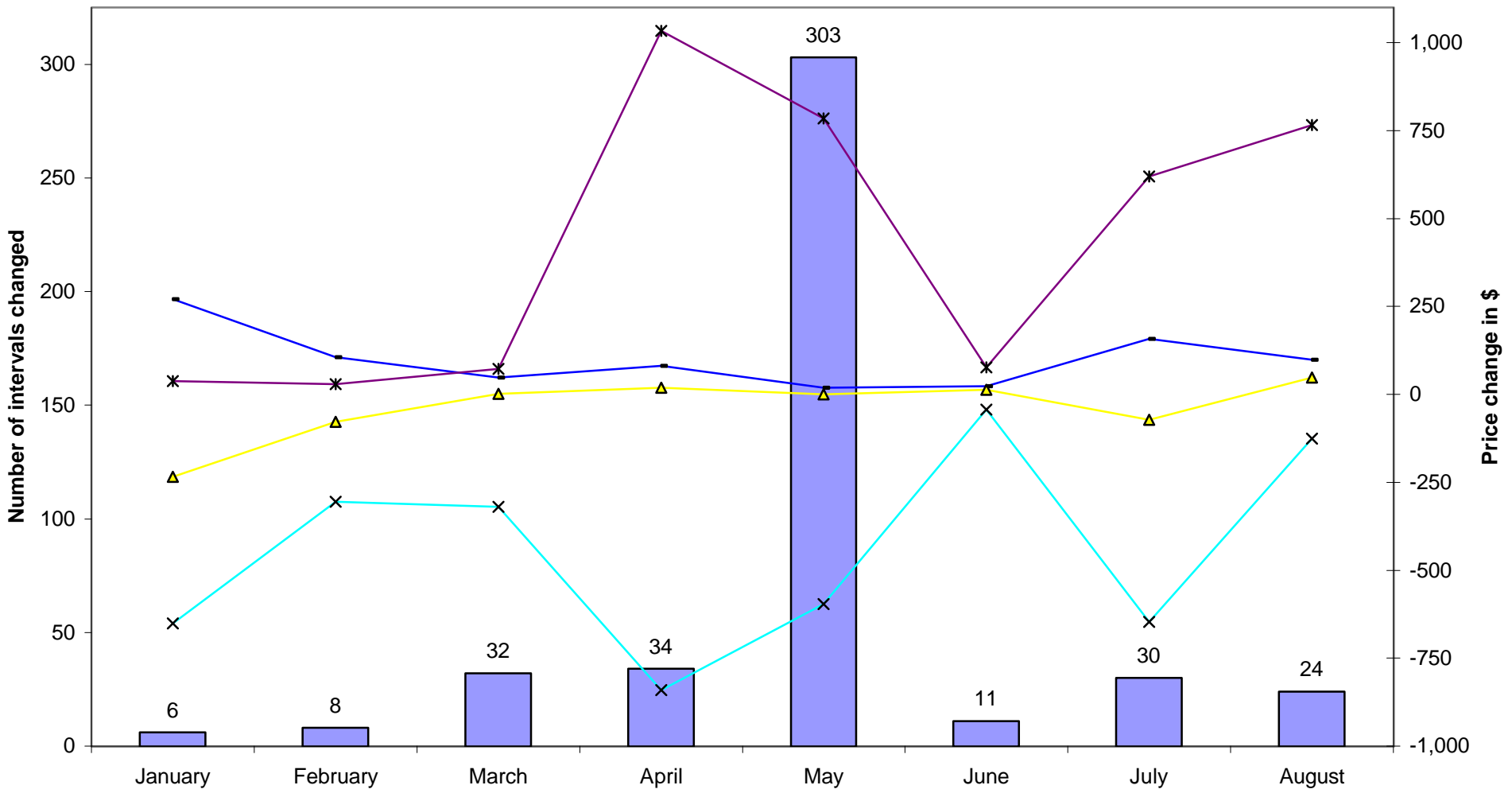
## Long Island Zone K Monthly Average LBMP Prices 2000 - 2001



## Percentage of Real-Time Corrections



### SCD Price Corrections 2001 - Magnitude and Count (Excludes intervals with ECA-B only corrections)



Number of Intervals Changed
  Average Absolute Change (SCD Correct - Original) \$
  Average Change (SCD Correct - Original) \$

Min Average Change (SCD Correct - Original) \$
  Max Average Change (SCD Correct - Original) \$

# Peak Load Analysis Actual, Forecast and Annual Adjusted

<b><u>2001 Forecast Peak:</u></b>	<b>30,620 MW</b>
<b>1. <u>Adjusting for warmer-than-design weather</u></b>	
▪ 2001 Actual Peak (8/9):	30,982 MW
▪ Deduct: Adjustment for weather	<u>(1,920)MW</u>
▪ Weather Adjusted Actual Peak	29,062 MW
<b>2. <u>Adjusting for Load Relief Measures</u></b>	
▪ Weather Adjusted Actual Peak	29,062 MW
▪ Add: MW Saved Due to LRMs	<u>1,580 MW</u>
▪ Annual Adjusted Peak Load	30,642 MW

---

**NYISO**

**Customer Satisfaction Survey**

**2001**

---



# Survey Purpose

---

- **To determine overall customer satisfaction and identify customer needs.**
- **To analyze, compare and rank the results obtained against last year's survey.**
- **To incorporate findings into NYISO Business Plan.**

# Survey Schedule

---

- **September 7<sup>th</sup> – NYISO sent the Survey Announcement Letter to each Customer’s Main Contact**
- **September 10<sup>th</sup> – Opinion Dynamics to send an email with a link to the Survey to all Main Contacts (responses due by Sept. 18<sup>th</sup>)**
- **September 13<sup>th</sup> - Reminder letter to Main Contacts**
- **September 19<sup>th</sup> - Survey letter to Secondary Contacts if no response from Main Contact. (responses due by Sept 27<sup>th</sup>)**
- **September 24<sup>th</sup> - Reminder letter to Secondary Contact**
- **September 28<sup>th</sup> - Fielding of surveys complete**
- **October 1<sup>st</sup> – November 1<sup>st</sup> – Results tabulated and analyzed**
- **November 12<sup>th</sup> – Deliverables sent to NYISO for review.**

# Additional Information

---

- **Survey Participants will be entered in a drawing to win a \$500 Gift Certificate**
- **Results and action plans on findings to be presented to Management Committee Members in December**

## ISO Committee Sector Meeting Schedule

<b>Generation Owner's</b>	<b>October 2nd, 2001 9:00 am – 1:00 pm</b>	<b>NYS Nurses Assoc. Board Room</b>
<b>Public Power/ Environmental</b>	<b>October 3rd, 2001 8:45 am – 12:45 pm</b>	<b>NYISO PCC Conference Rooms C &amp; D</b>
<b>End Use</b>	<b>October 5th, 2001 10:00 am – 1:30 pm</b>	<b>Hunton &amp; Williams NYC, NY</b>
<b>Other Supplier's</b>	<b>October 11th, 2001 9:30 am – 1:30 pm</b>	<b>NYISO PCC Conference Rooms C &amp; D</b>
<b>Transmission Owner's</b>	<b>October 12th, 2001 11:30 am – 3:30 pm</b>	<b>NYISO 290 Washington Avenue Conference Room WD</b>