

Zone J and H-I LFU Presentation to LFTF

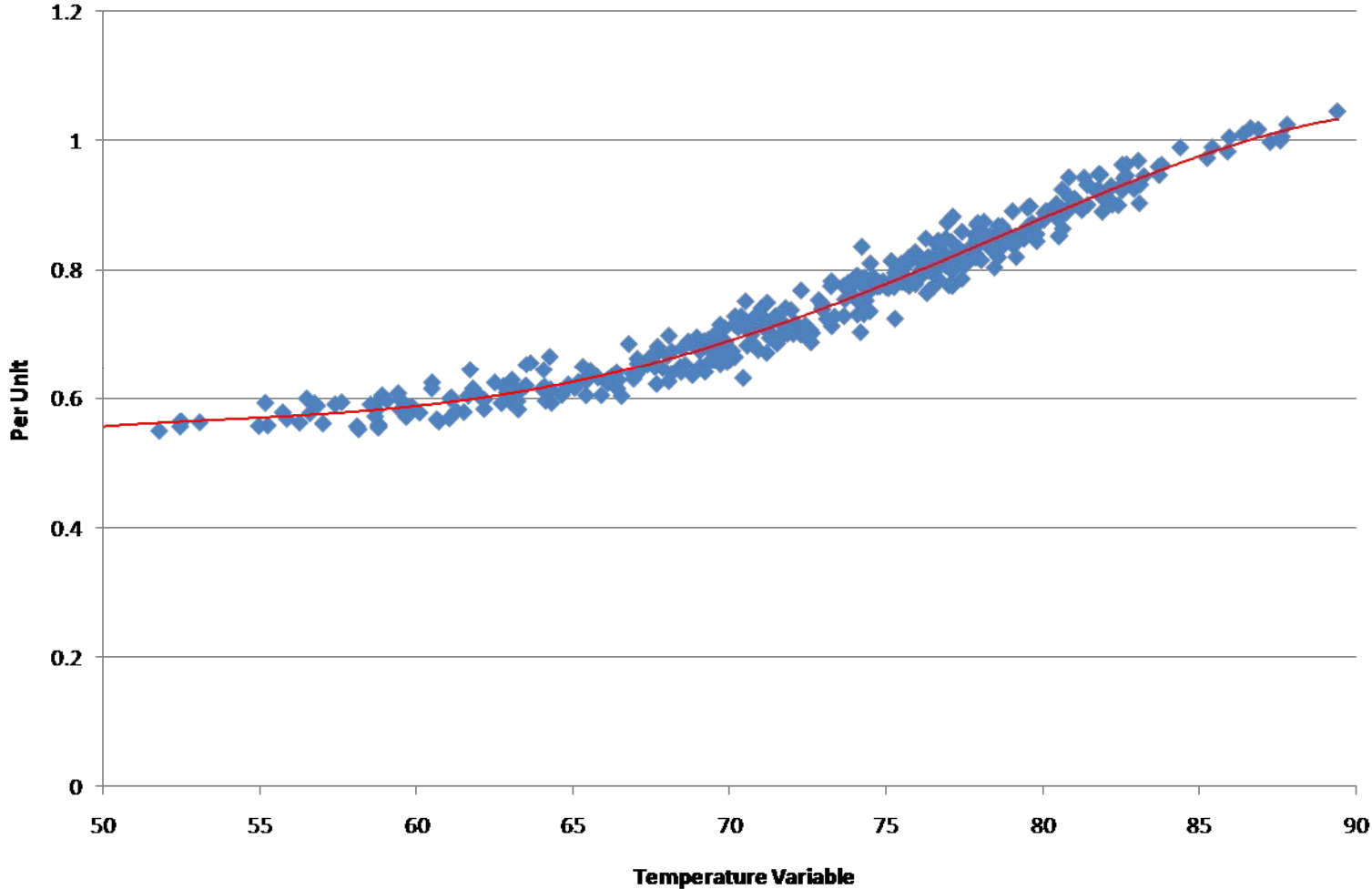
Consolidated Edison Co. of NY

June 17, 2011

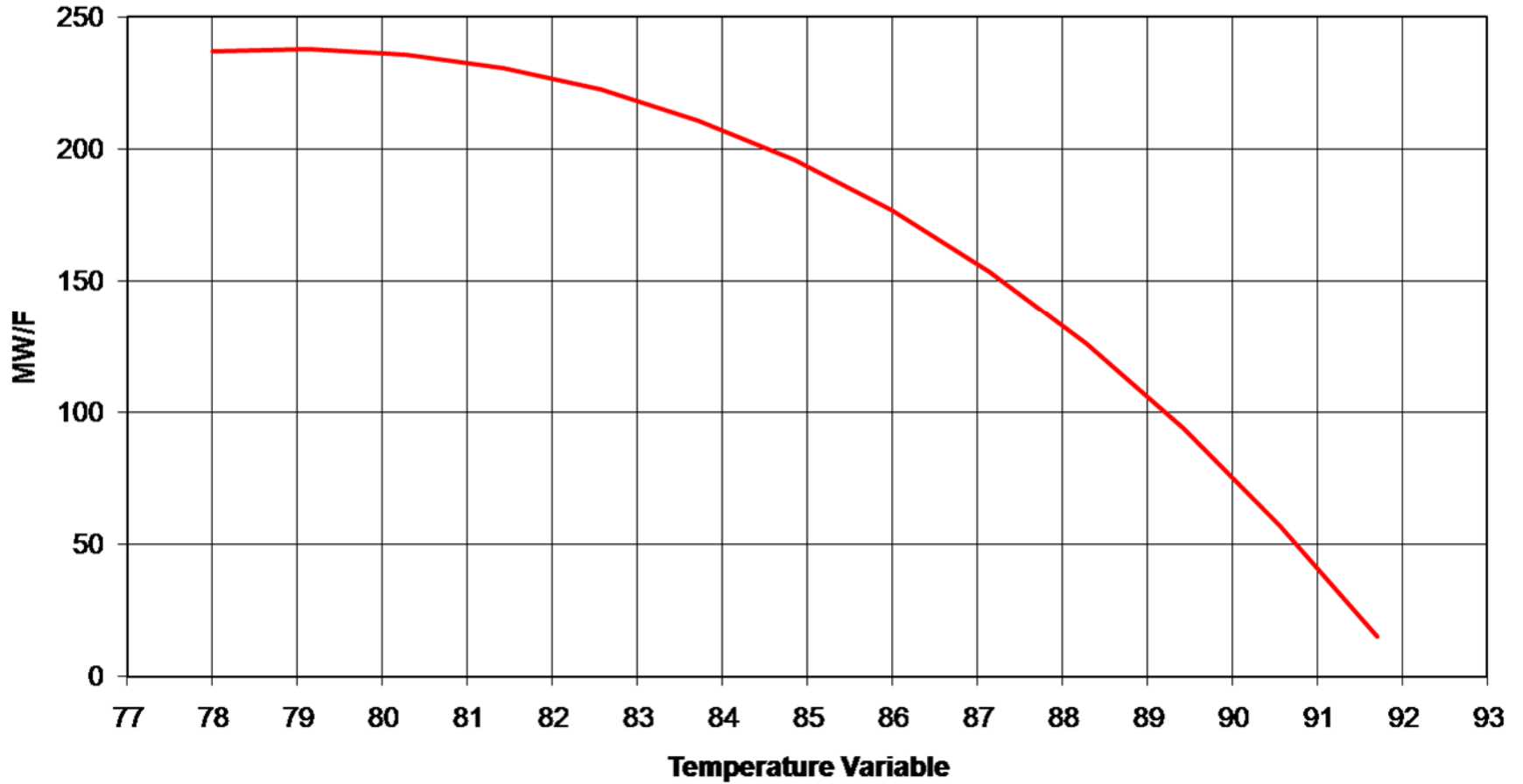
Methodology

- Update Peak Producing Temperature Variable Table
- Develop Weather Response Curve
- Calculate Load Uncertainty Curve
- Current methodology established in 2009

Zone J
Per Unit Demand vs. Temperature Variable
(Summers 1999, 2001, 2005, 2006, & 2010)



Zone J
Weather Response Function vs. Temperature Variable
(Summers 1999, 2001, 2005, 2006 & 2010)

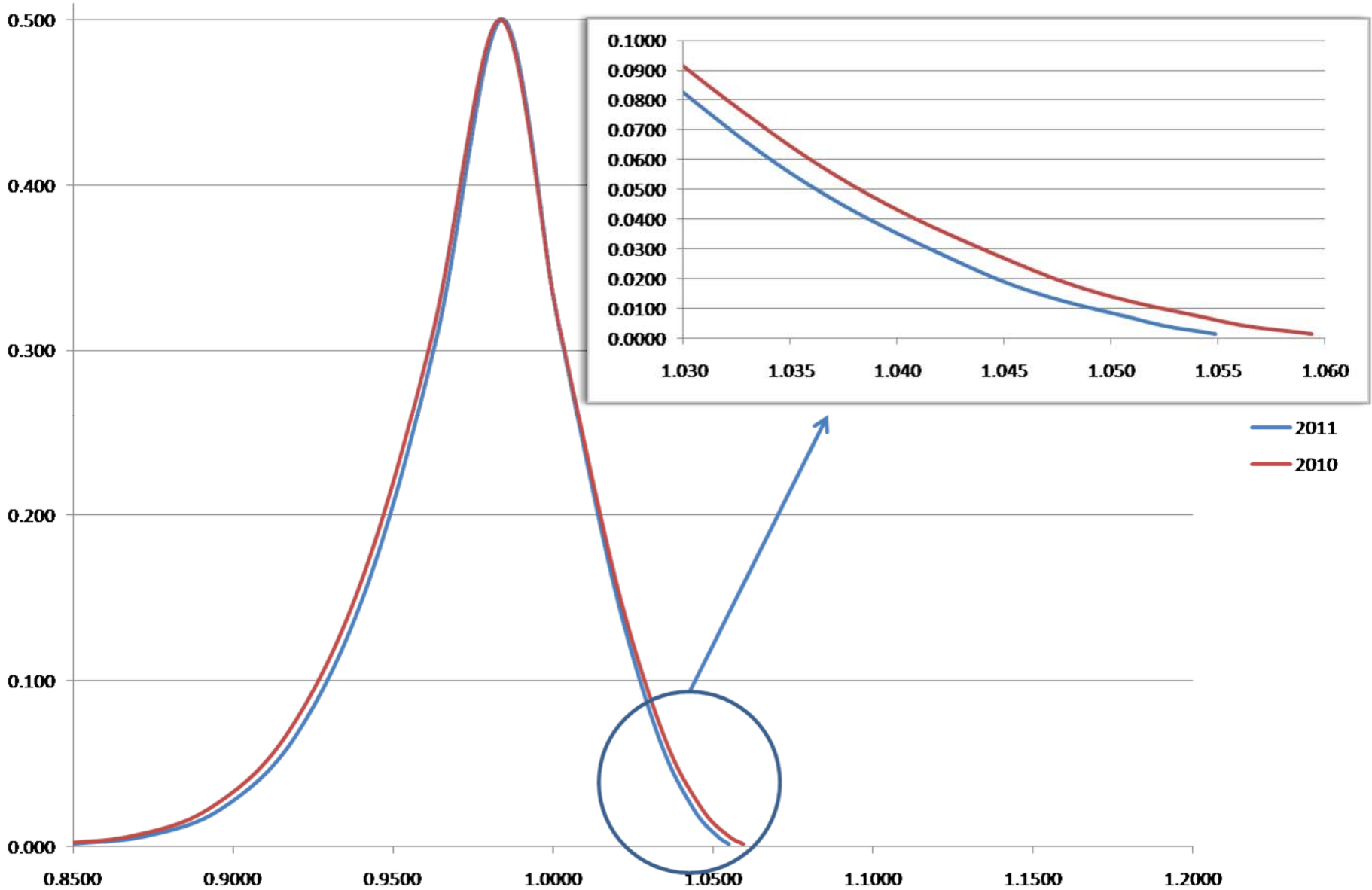


Zone J

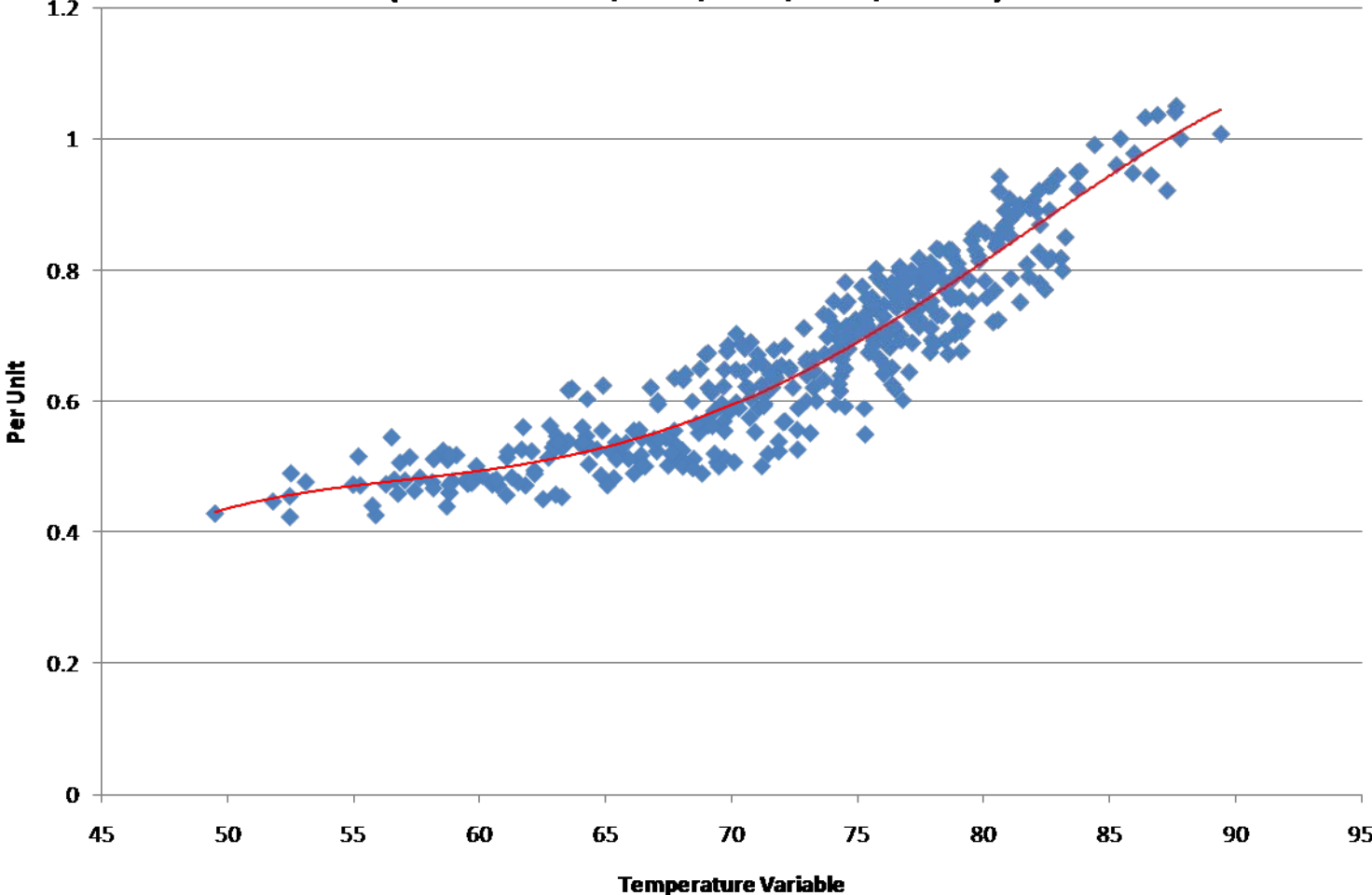
Load Forecast Uncertainty Results

Bin	Cum Prob	Z	TV	MW	MW/F	Per Unit
1	0.001350	-3.000	78.00	9781	237	84.9%
	0.006210	-2.500	79.14	10052	238	87.3%
2	0.022750	-2.000	80.29	10323	236	89.7%
	0.066807	-1.500	81.43	10589	231	92.0%
3	0.158655	-1.000	82.57	10849	223	94.2%
	0.308538	-0.500	83.71	11096	211	96.4%
4	0.500000	0.000	84.86	11329	196	98.4%
	0.66667	0.431	85.84	11514	180	100.0%
	0.691462	0.500	86.00	11542	177	100.2%
5	0.841345	1.000	87.14	11731	154	101.9%
	0.933193	1.500	88.28	11891	126	103.3%
6	0.977250	2.000	89.42	12017	94	104.4%
	0.993790	2.500	90.57	12104	57	105.1%
7	0.998650	3.000	91.71	12146	15	105.5%

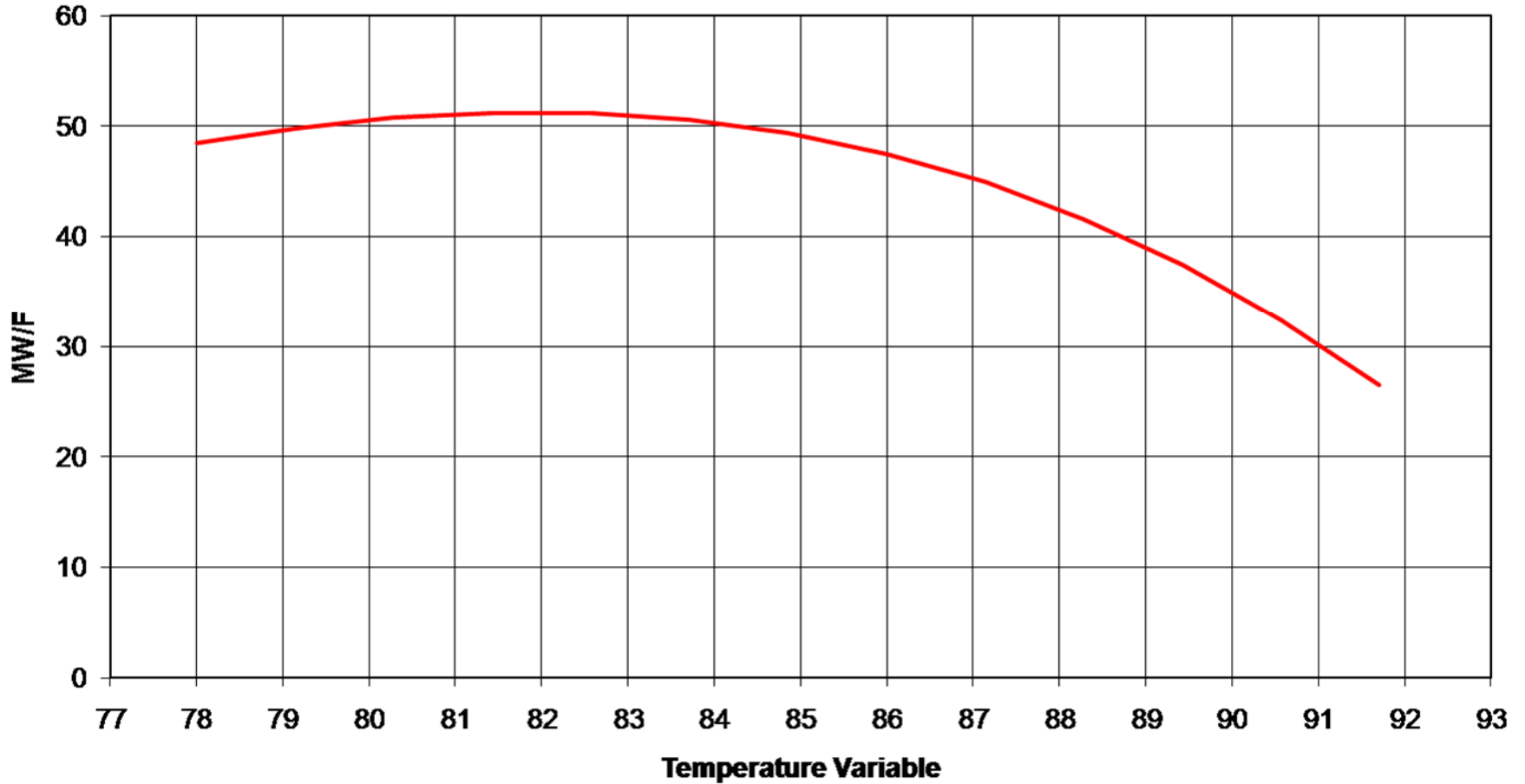
Zone J Load Forecast Uncertainty Curves Comparison



Zone H&I
Per Unit Demand vs. Temperature Variable
(Summers 1999, 2001, 2005, 2006, & 2010)



Zone H-I
Weather Response Function vs. Temperature Variable
(Summers 1999, 2001, 2005, 2006 & 2010)



Zone H-I

Load Forecast Uncertainty Results

Bin	Cum Prob	Z	TV	MW	MW/F	Per Unit
1	0.001350	-3.000	78.00	1543	48	79.7%
	0.006210	-2.500	79.14	1599	50	82.6%
2	0.022750	-2.000	80.29	1657	51	85.5%
	0.066807	-1.500	81.43	1715	51	88.6%
3	0.158655	-1.000	82.57	1773	51	91.6%
	0.308538	-0.500	83.71	1831	51	94.6%
4	0.500000	0.000	84.86	1889	49	97.5%
	0.66667	0.431	85.84	1937	48	100.0%
	0.691462	0.500	86.00	1944	48	100.4%
5	0.841345	1.000	87.14	1997	45	103.1%
	0.933193	1.500	88.28	2046	42	105.7%
6	0.977250	2.000	89.42	2092	37	108.0%
	0.993790	2.500	90.57	2132	32	110.1%
7	0.998650	3.000	91.71	2165	27	111.8%

Zone H-I Load Forecast Uncertainty Curves Comparison

