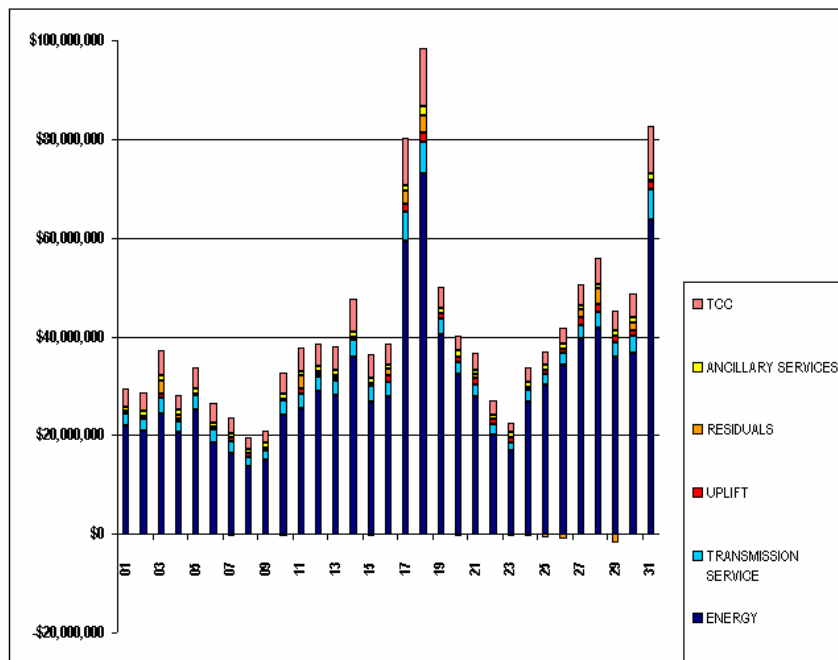


SETTLEMENTS REPORT
 JULY 2006 SETTLEMENT ADJUSTMENT
 DECEMBER 7, 2006

INITIAL SETTLEMENT MARKET COSTS ANALYSIS

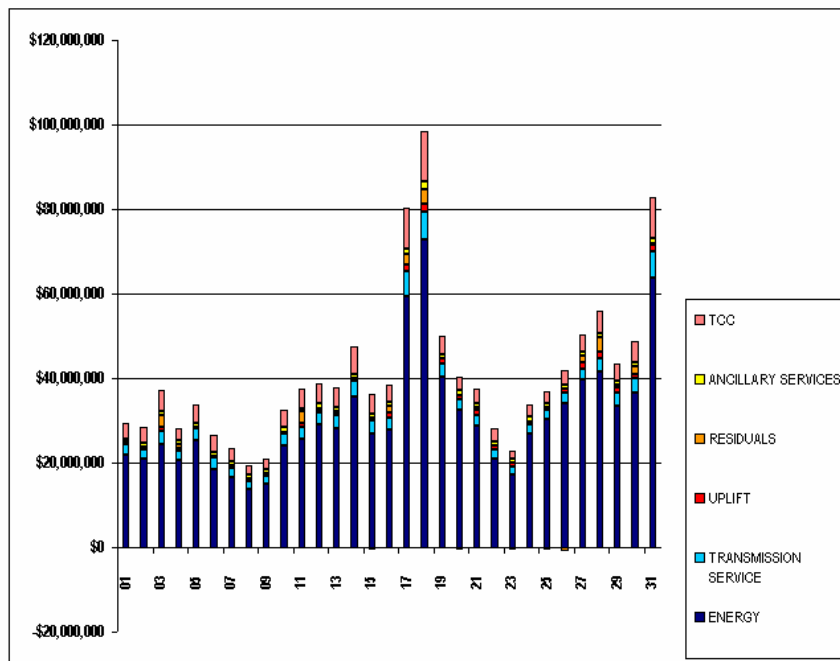
	MONDAY	TUESDAY	WEDNESDAY	THURSDAY	FRIDAY	SATURDAY	SUNDAY
						1	2
ENERGY						\$21,889,145.82	\$20,847,065.11
TRANSMISSION SERVICE						\$2,588,637.83	\$2,324,720.66
UPLIFT						\$506,784.54	\$359,668.36
RESIDUALS						(\$264,552.61)	\$364,115.38
ANCILLARY SERVICES						\$689,714.63	\$937,824.12
TCC						\$3,867,429.01	\$3,744,236.40
	3	4	5	6	7	8	9
ENERGY	\$24,429,672.12	\$20,673,581.20	\$25,288,139.51	\$18,364,881.66	\$16,444,722.12	\$13,783,608.93	\$15,034,601.36
TRANSMISSION SERVICE	\$3,078,936.25	\$2,031,828.98	\$2,764,355.42	\$2,785,877.49	\$2,376,399.67	\$1,726,460.08	\$1,863,865.78
UPLIFT	\$952,449.03	\$625,708.94	\$337,241.75	\$463,409.21	\$617,770.07	\$825,423.71	\$610,889.25
RESIDUALS	\$2,693,420.89	\$900,325.41	(\$225,515.39)	(\$342,449.91)	(\$468,624.20)	(\$117,873.43)	(\$109,676.06)
ANCILLARY SERVICES	\$926,727.63	\$966,288.76	\$1,013,972.29	\$910,250.56	\$907,297.63	\$857,912.91	\$650,828.61
TCC	\$5,094,813.41	\$2,863,224.60	\$4,438,177.82	\$3,917,404.42	\$3,139,520.87	\$2,229,952.15	\$2,509,347.98
	10	11	12	13	14	15	16
ENERGY	\$24,124,834.53	\$25,492,857.31	\$28,936,897.54	\$28,225,683.91	\$35,726,480.60	\$26,815,458.41	\$27,833,307.97
TRANSMISSION SERVICE	\$2,794,499.84	\$2,972,550.22	\$2,900,774.80	\$2,882,972.09	\$3,651,198.30	\$3,108,344.75	\$2,827,003.29
UPLIFT	\$349,777.46	\$1,031,776.50	\$579,482.90	\$444,918.27	\$507,099.36	\$704,826.85	\$1,322,828.48
RESIDUALS	(\$411,537.85)	\$2,590,245.73	\$607,813.03	\$627,198.20	(\$126,430.97)	(\$482,657.29)	\$1,339,791.46
ANCILLARY SERVICES	\$1,033,696.31	\$876,276.17	\$1,094,332.05	\$1,083,873.14	\$1,091,680.11	\$1,011,504.77	\$999,227.78
TCC	\$4,255,902.37	\$4,686,776.88	\$4,601,160.75	\$4,674,607.91	\$6,546,014.56	\$4,709,801.44	\$4,169,313.05
	17	18	19	20	21	22	23
ENERGY	\$69,466,233.30	\$72,920,595.07	\$40,352,425.26	\$32,413,764.14	\$27,966,036.43	\$20,115,959.73	\$16,819,966.52
TRANSMISSION SERVICE	\$5,771,253.16	\$6,394,277.59	\$3,186,836.48	\$2,503,092.79	\$2,376,097.69	\$2,117,135.65	\$1,646,684.57
UPLIFT	\$1,647,921.74	\$2,069,439.10	\$1,026,170.63	\$1,053,322.51	\$1,354,535.99	\$937,938.75	\$1,169,034.56
RESIDUALS	\$2,633,688.97	\$3,320,011.79	(\$262,903.12)	(\$569,091.88)	\$718,489.89	(\$186,989.17)	(\$617,627.22)
ANCILLARY SERVICES	\$1,094,731.37	\$1,851,349.20	\$1,217,493.40	\$1,100,615.59	\$848,766.46	\$990,929.86	\$877,601.45
TCC	\$9,566,097.72	\$11,960,046.40	\$4,187,513.65	\$3,110,714.86	\$3,439,244.15	\$2,916,621.36	\$1,954,044.32
	24	25	26	27	28	29	30
ENERGY	\$26,841,002.25	\$30,249,334.60	\$34,204,870.10	\$39,664,934.31	\$41,724,227.39	\$35,779,531.45	\$36,740,707.87
TRANSMISSION SERVICE	\$2,250,588.53	\$2,214,833.81	\$2,457,403.56	\$2,533,650.33	\$3,156,230.89	\$2,921,626.48	\$3,446,300.45
UPLIFT	\$658,886.76	\$599,310.55	\$774,417.18	\$1,552,834.25	\$1,669,190.46	\$1,491,037.57	\$947,004.73
RESIDUALS	(\$380,239.44)	(\$696,756.03)	(\$940,505.40)	\$1,605,893.38	\$3,087,337.42	(\$1,711,217.91)	\$1,672,267.86
ANCILLARY SERVICES	\$1,057,258.51	\$1,094,024.62	\$1,117,773.43	\$1,033,419.35	\$1,002,684.79	\$1,101,441.42	\$1,056,703.67
TCC	\$3,041,044.08	\$2,720,424.47	\$3,234,488.24	\$4,051,247.91	\$5,309,057.82	\$3,983,593.82	\$4,954,292.63
	31						
ENERGY	\$63,630,712.97						
TRANSMISSION SERVICE	\$6,300,548.73						
UPLIFT	\$1,528,388.67						
RESIDUALS	\$320,117.93						
ANCILLARY SERVICES	\$1,298,367.21						
TCC	\$9,683,249.51						



SETTLEMENTS REPORT
 JULY 2006 SETTLEMENT ADJUSTMENT
 DECEMBER 7, 2006

4-MONTH SETTLEMENT ADJUSTMENT MARKET COSTS ANALYSIS

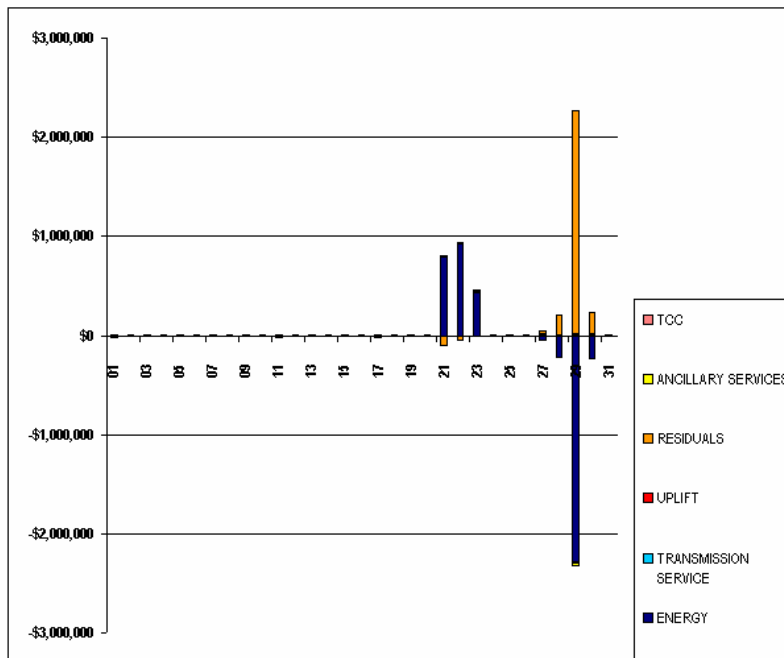
	MONDAY	TUESDAY	WEDNESDAY	THURSDAY	FRIDAY	SATURDAY	SUNDAY
ENERGY						1	2
TRANSMISSION SERVICE						\$21,870,934.97	\$20,849,923.29
UPLIFT						\$2,588,486.95	\$2,324,330.65
RESIDUALS						\$507,182.10	\$361,855.21
ANCILLARY SERVICES						(\$356,265.63)	\$365,031.19
TCC						\$689,676.67	\$937,311.29
						\$3,867,429.01	\$3,744,236.40
	3	4	5	6	7	8	9
ENERGY	\$24,427,683.93	\$20,674,948.35	\$25,281,915.47	\$18,361,271.63	\$16,438,038.32	\$13,782,907.89	\$15,033,545.15
TRANSMISSION SERVICE	\$3,077,393.56	\$2,031,272.72	\$2,763,704.55	\$2,785,169.47	\$2,375,644.03	\$1,725,883.57	\$1,863,225.47
UPLIFT	\$952,455.34	\$628,128.83	\$338,339.58	\$463,357.73	\$617,703.63	\$825,424.89	\$610,906.90
RESIDUALS	\$2,693,944.69	\$899,419.77	(\$223,935.11)	(\$341,525.76)	(\$466,862.39)	(\$117,457.47)	(\$109,240.58)
ANCILLARY SERVICES	\$926,006.74	\$965,767.40	\$1,013,152.63	\$908,995.84	\$906,769.56	\$857,181.20	\$849,884.92
TCC	\$5,094,813.41	\$2,863,224.60	\$4,438,177.82	\$3,917,404.42	\$3,139,520.87	\$2,229,952.15	\$2,509,347.98
	10	11	12	13	14	15	16
ENERGY	\$24,122,005.39	\$25,477,160.75	\$28,930,213.42	\$28,217,280.68	\$35,716,515.05	\$26,810,613.19	\$27,827,846.99
TRANSMISSION SERVICE	\$2,793,942.78	\$2,971,282.11	\$2,899,696.62	\$2,882,154.95	\$3,650,602.35	\$3,107,898.61	\$2,826,515.59
UPLIFT	\$349,594.50	\$1,031,416.33	\$583,691.46	\$444,909.88	\$507,071.17	\$704,736.69	\$1,323,008.64
RESIDUALS	(\$411,111.53)	\$2,591,436.75	\$609,464.31	\$629,141.10	(\$124,046.10)	(\$481,772.21)	\$1,340,750.02
ANCILLARY SERVICES	\$1,032,963.62	\$875,358.09	\$1,093,352.83	\$1,062,622.61	\$1,090,859.37	\$1,010,819.54	\$998,565.23
TCC	\$4,255,902.37	\$4,686,776.88	\$4,601,160.75	\$4,674,607.91	\$6,546,014.56	\$4,709,801.44	\$4,169,313.05
	17	18	19	20	21	22	23
ENERGY	\$69,447,647.41	\$72,909,558.81	\$40,346,568.74	\$32,412,154.59	\$28,755,710.64	\$21,037,950.13	\$17,257,310.55
TRANSMISSION SERVICE	\$5,769,319.55	\$6,392,248.85	\$3,186,072.29	\$2,502,591.77	\$2,379,242.71	\$2,122,226.76	\$1,650,895.63
UPLIFT	\$1,647,033.17	\$2,084,395.53	\$1,028,611.09	\$1,058,467.40	\$1,361,915.31	\$938,310.65	\$1,170,058.06
RESIDUALS	\$2,634,632.89	\$3,312,420.89	(\$263,150.58)	(\$674,160.67)	\$603,028.08	(\$242,493.29)	(\$628,813.16)
ANCILLARY SERVICES	\$1,093,794.82	\$1,850,120.04	\$1,216,344.85	\$1,099,895.79	\$852,945.59	\$1,003,917.62	\$887,693.87
TCC	\$9,566,097.72	\$11,960,046.40	\$4,187,513.65	\$3,110,714.86	\$3,439,244.15	\$2,916,621.36	\$1,954,044.32
	24	25	26	27	28	29	30
ENERGY	\$26,835,180.10	\$30,248,954.80	\$34,206,429.07	\$39,612,627.56	\$41,504,626.45	\$33,502,222.23	\$36,506,827.50
TRANSMISSION SERVICE	\$2,250,069.84	\$2,213,501.24	\$2,456,991.80	\$2,532,357.93	\$3,154,215.01	\$2,906,342.60	\$3,444,215.13
UPLIFT	\$661,579.45	\$597,097.31	\$778,615.02	\$1,553,612.49	\$1,669,103.91	\$1,493,037.36	\$947,040.22
RESIDUALS	(\$379,444.40)	(\$706,443.68)	(\$940,969.40)	\$1,646,767.13	\$3,293,766.51	\$559,472.69	\$1,901,111.23
ANCILLARY SERVICES	\$1,056,506.08	\$1,093,136.68	\$1,117,159.53	\$1,031,763.21	\$1,000,848.34	\$1,059,649.69	\$1,054,022.94
TCC	\$3,041,044.08	\$2,720,424.47	\$3,234,488.24	\$4,051,247.91	\$5,309,057.82	\$3,983,593.82	\$4,954,292.63
	31						
ENERGY	\$63,621,725.74						
TRANSMISSION SERVICE	\$6,295,390.07						
UPLIFT	\$1,530,517.08						
RESIDUALS	\$320,640.46						
ANCILLARY SERVICES	\$1,297,414.39						
TCC	\$9,683,249.51						



SETTLEMENTS REPORT
 JULY 2006 SETTLEMENT ADJUSTMENT
 DECEMBER 7, 2006

SETTLEMENT ADJUSTMENT MARKET COSTS DELTA ANALYSIS

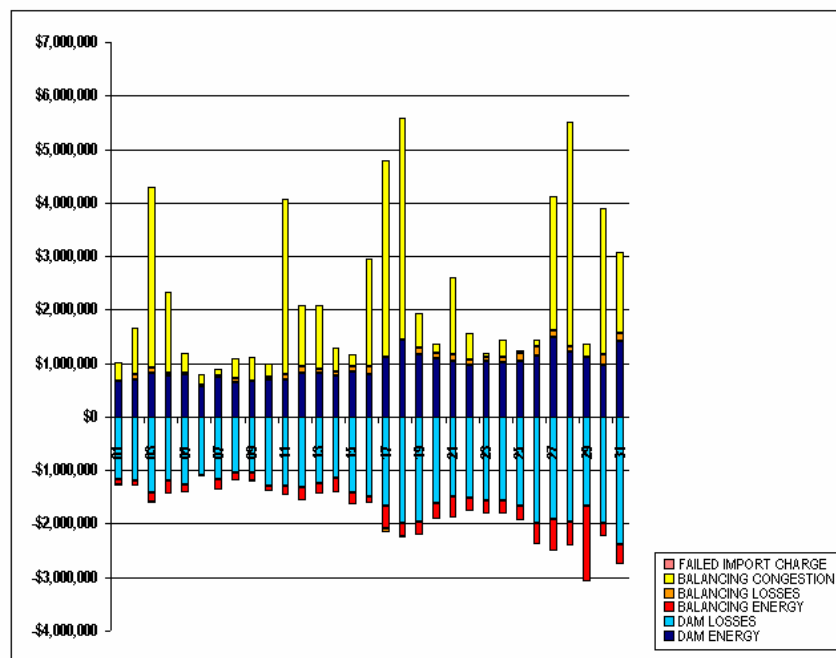
	MONDAY	TUESDAY	WEDNESDAY	THURSDAY	FRIDAY	SATURDAY	SUNDAY
ENERGY						1	2
TRANSMISSION SERVICE						(\$18,210.85)	\$2,858.18
UPLIFT						(\$150.88)	(\$390.01)
RESIDUALS						\$397.56	\$2,186.85
ANCILLARY SERVICES						\$8,286.98	\$915.81
TCC						(\$37.96)	(\$512.83)
						\$0.00	\$0.00
	3	4	5	6	7	8	9
ENERGY	(\$1,988.19)	\$1,367.15	(\$6,224.04)	(\$3,610.03)	(\$6,683.80)	(\$701.04)	(\$1,056.21)
TRANSMISSION SERVICE	(\$1,542.69)	(\$556.26)	(\$650.87)	(\$708.02)	(\$755.64)	(\$576.51)	(\$640.31)
UPLIFT	\$6.31	\$2,419.89	\$1,097.83	(\$51.48)	(\$66.44)	\$1.18	\$17.65
RESIDUALS	\$523.80	(\$905.64)	\$1,580.28	\$924.15	\$1,761.81	\$415.96	\$435.48
ANCILLARY SERVICES	(\$719.09)	(\$521.36)	(\$819.66)	(\$1,254.72)	(\$528.07)	(\$731.71)	(\$843.69)
TCC	\$0.00	\$0.00	\$0.00	\$0.00	\$0.00	\$0.00	\$0.00
	10	11	12	13	14	15	16
ENERGY	(\$2,829.14)	(\$15,696.56)	(\$6,684.12)	(\$8,403.23)	(\$9,965.55)	(\$4,845.22)	(\$5,460.98)
TRANSMISSION SERVICE	(\$657.06)	(\$1,268.11)	(\$1,078.18)	(\$817.14)	(\$595.95)	(\$446.14)	(\$487.70)
UPLIFT	(\$182.96)	(\$358.17)	\$4,208.56	(\$8.39)	(\$28.21)	(\$90.16)	\$380.16
RESIDUALS	\$426.32	\$1,191.02	\$1,651.28	\$1,942.90	\$2,384.87	\$885.08	\$958.56
ANCILLARY SERVICES	(\$732.69)	(\$918.08)	(\$979.22)	(\$1,050.53)	(\$821.74)	(\$685.23)	(\$662.55)
TCC	\$0.00	\$0.00	\$0.00	\$0.00	\$0.00	\$0.00	\$0.00
	17	18	19	20	21	22	23
ENERGY	(\$18,585.89)	(\$11,036.26)	(\$5,856.52)	(\$1,609.55)	\$789,674.21	\$921,990.40	\$437,344.03
TRANSMISSION SERVICE	(\$1,933.61)	(\$2,028.74)	(\$764.19)	(\$601.02)	\$3,145.02	\$5,091.11	\$4,211.06
UPLIFT	(\$868.57)	\$956.43	\$2,440.46	\$5,164.89	\$7,379.32	\$371.90	\$1,023.50
RESIDUALS	\$943.92	(\$7,590.90)	(\$247.46)	(\$5,068.79)	(\$115,461.81)	(\$65,504.12)	(\$11,185.94)
ANCILLARY SERVICES	(\$936.55)	(\$1,229.16)	(\$1,148.55)	(\$719.80)	\$4,179.13	\$12,987.76	\$10,092.42
TCC	\$0.00	\$0.00	\$0.00	\$0.00	\$0.00	\$0.00	\$0.00
	24	25	26	27	28	29	30
ENERGY	(\$5,822.15)	(\$379.80)	\$1,558.97	(\$52,306.75)	(\$219,600.94)	#####	(\$233,800.37)
TRANSMISSION SERVICE	(\$518.69)	(\$1,332.57)	(\$411.76)	(\$1,292.40)	(\$2,015.88)	(\$15,283.88)	(\$2,085.32)
UPLIFT	\$2,692.69	(\$2,213.24)	\$4,397.84	\$778.24	(\$86.55)	\$1,999.79	\$35.49
RESIDUALS	\$795.04	(\$9,687.65)	(\$464.00)	\$40,873.75	\$206,429.09	\$2,270,690.60	\$228,843.37
ANCILLARY SERVICES	(\$752.43)	(\$887.94)	(\$613.90)	(\$1,656.14)	(\$1,836.45)	(\$41,791.73)	(\$2,680.73)
TCC	\$0.00	\$0.00	\$0.00	\$0.00	\$0.00	\$0.00	\$0.00
	31						
ENERGY	(\$9,987.23)						
TRANSMISSION SERVICE	(\$5,158.66)						
UPLIFT	\$2,128.41						
RESIDUALS	\$522.53						
ANCILLARY SERVICES	(\$852.82)						
TCC	\$0.00						



SETTLEMENTS REPORT
 JULY 2006 SETTLEMENT ADJUSTMENT
 DECEMBER 7, 2006

INITIAL SETTLEMENT MARKET RESIDUALS ANALYSIS

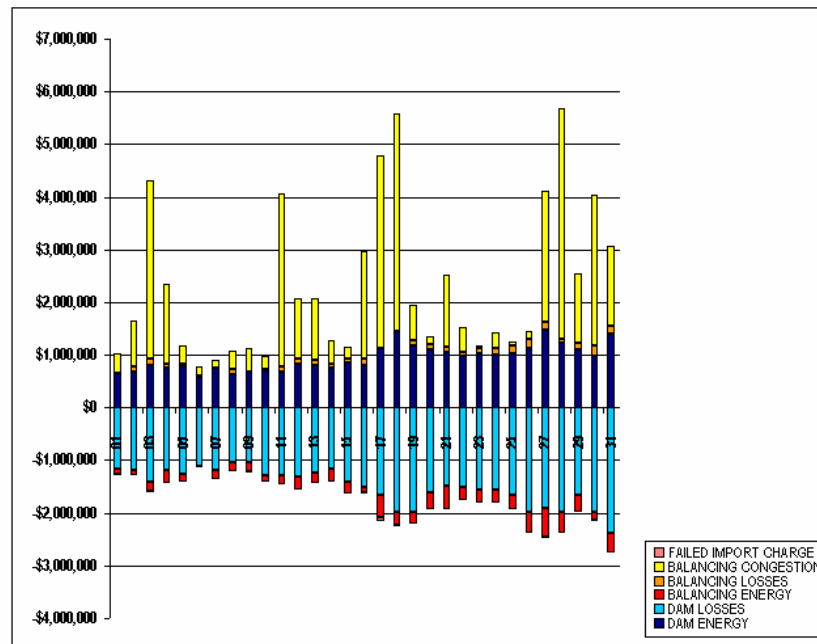
	MONDAY	TUESDAY	WEDNESDAY	THURSDAY	FRIDAY	SATURDAY	SUNDAY
						1	2
DAM ENERGY						\$656,216.94	\$690,384.93
DAM LOSSES						(\$1,168,726.44)	(\$1,190,122.41)
BALANCING ENERGY						(\$95,194.81)	(\$93,933.86)
BALANCING LOSSES						\$6,985.29	\$96,399.85
BALANCING CONGESTION						\$359,565.31	\$862,940.84
FAILED IMPORT CHARGE						(\$25,398.90)	(\$1,553.97)
	3	4	5	6	7	8	9
DAM ENERGY	\$805,245.13	\$763,194.37	\$784,859.26	\$667,002.29	\$752,124.39	\$639,051.82	\$673,722.80
DAM LOSSES	(\$1,412,044.98)	(\$1,191,291.80)	(\$1,267,204.15)	(\$1,107,092.14)	(\$1,177,168.28)	(\$1,044,794.71)	(\$1,048,112.33)
BALANCING ENERGY	(\$185,967.65)	(\$249,185.90)	(\$143,792.71)	\$32,065.21	(\$192,598.69)	(\$157,665.41)	(\$157,746.30)
BALANCING LOSSES	\$111,053.36	\$59,216.31	\$41,172.71	(\$10,242.04)	\$10,064.74	\$84,034.75	(\$19,539.43)
BALANCING CONGESTION	\$3,389,080.41	\$1,519,844.59	\$359,449.50	\$184,367.27	\$141,659.54	\$361,500.12	\$442,543.05
FAILED IMPORT CHARGE	(\$13,945.38)	(\$1,452.16)	\$0.00	(\$550.50)	(\$2,705.90)	\$0.00	(\$543.85)
	10	11	12	13	14	15	16
DAM ENERGY	\$700,174.31	\$684,564.55	\$829,354.40	\$810,039.80	\$762,143.95	\$842,522.82	\$795,249.53
DAM LOSSES	(\$1,286,254.41)	(\$1,285,203.82)	(\$1,318,427.17)	(\$1,247,396.43)	(\$1,155,406.99)	(\$1,413,764.42)	(\$1,498,329.65)
BALANCING ENERGY	(\$114,192.99)	(\$187,481.19)	(\$245,062.13)	(\$197,440.51)	(\$252,238.01)	(\$221,737.07)	(\$123,983.98)
BALANCING LOSSES	\$35,421.55	\$97,390.93	\$105,338.48	\$92,468.34	\$69,315.79	\$96,746.90	\$144,094.43
BALANCING CONGESTION	\$253,313.69	\$3,281,110.86	\$1,138,933.31	\$1,169,566.89	\$450,862.47	\$213,574.48	\$2,024,635.35
FAILED IMPORT CHARGE	\$0.00	(\$135.60)	(\$2,323.86)	(\$39.89)	(\$1,108.18)	\$0.00	(\$1,274.22)
	17	18	19	20	21	22	23
DAM ENERGY	\$1,125,053.26	\$1,448,372.68	\$1,171,980.86	\$1,093,807.23	\$1,040,115.24	\$966,160.16	\$1,032,058.44
DAM LOSSES	(\$1,667,502.02)	(\$1,991,355.76)	(\$1,972,684.90)	(\$1,617,440.43)	(\$1,492,475.71)	(\$1,521,828.44)	(\$1,563,122.05)
BALANCING ENERGY	(\$425,469.82)	(\$251,457.75)	(\$233,136.98)	(\$307,799.97)	(\$403,992.18)	(\$236,296.62)	(\$247,260.24)
BALANCING LOSSES	(\$63,784.50)	(\$14,267.49)	\$107,190.69	\$105,135.00	\$112,435.02	\$68,540.79	\$64,668.84
BALANCING CONGESTION	\$3,666,226.52	\$4,130,543.86	\$665,238.73	\$157,290.51	\$1,462,407.52	\$618,275.85	\$76,124.11
FAILED IMPORT CHARGE	(\$834.47)	(\$1,823.75)	(\$1,491.52)	(\$84.22)	\$0.00	(\$1,840.91)	(\$96.32)
	24	25	26	27	28	29	30
DAM ENERGY	\$1,011,351.46	\$1,039,105.42	\$1,137,828.69	\$1,480,396.78	\$1,218,491.18	\$1,112,551.01	\$972,778.27
DAM LOSSES	(\$1,573,219.28)	(\$1,654,330.07)	(\$1,986,912.27)	(\$1,920,765.92)	(\$1,975,837.56)	(\$1,671,639.45)	(\$1,991,448.14)
BALANCING ENERGY	(\$238,849.88)	(\$281,981.57)	(\$393,437.93)	(\$586,149.79)	(\$446,907.66)	(\$1,398,812.38)	(\$236,676.78)
BALANCING LOSSES	\$110,665.75	\$145,496.11	\$174,976.24	\$141,829.35	\$84,067.84	(\$2,455.75)	\$189,258.64
BALANCING CONGESTION	\$309,812.51	\$54,954.08	\$127,359.70	\$2,495,836.73	\$4,207,827.99	\$251,168.47	\$2,744,399.70
FAILED IMPORT CHARGE	\$0.00	\$0.00	(\$319.83)	(\$5,253.77)	(\$304.37)	(\$2,029.81)	(\$6,043.83)
	31						
DAM ENERGY	\$1,406,506.95						
DAM LOSSES	(\$2,374,773.72)						
BALANCING ENERGY	(\$379,568.33)						
BALANCING LOSSES	\$150,440.13						
BALANCING CONGESTION	\$1,525,562.12						
FAILED IMPORT CHARGE	(\$8,049.22)						



SETTLEMENTS REPORT
 JULY 2006 SETTLEMENT ADJUSTMENT
 DECEMBER 7, 2006

4-MONTH SETTLEMENT ADJUSTMENT MARKET RESIDUALS ANALYSIS

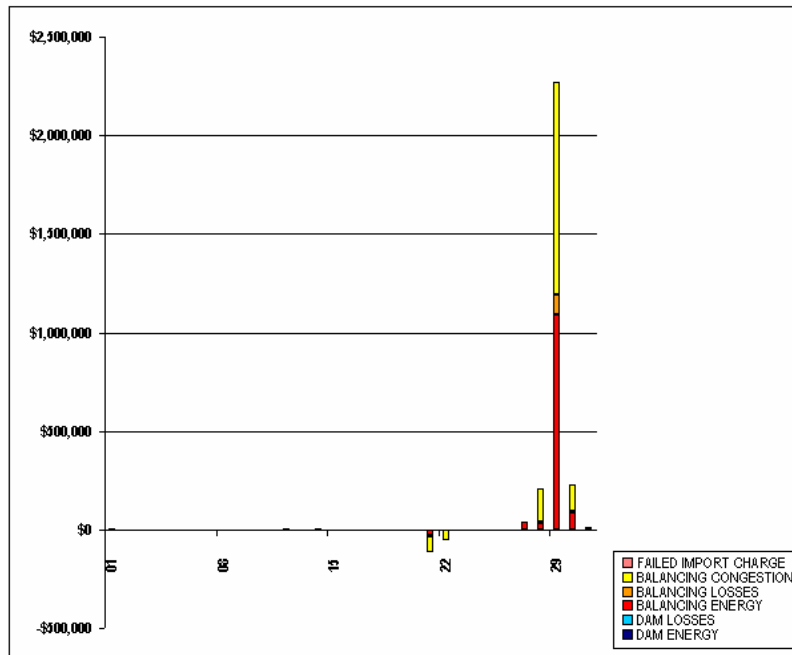
	MONDAY	TUESDAY	WEDNESDAY	THURSDAY	FRIDAY	SATURDAY	SUNDAY
						1	2
DAM ENERGY						\$656,216.94	\$680,384.93
DAM LOSSES						(\$1,168,726.44)	(\$1,190,122.41)
BALANCING ENERGY						(\$87,781.42)	(\$93,419.04)
BALANCING LOSSES						\$9,773.37	\$96,872.02
BALANCING CONGESTION						\$359,650.70	\$863,069.60
FAILED IMPORT CHARGE						(\$25,398.78)	(\$1,553.91)
	3	4	5	6	7	8	9
DAM ENERGY	\$805,245.13	\$763,194.37	\$784,859.26	\$667,002.29	\$752,124.39	\$639,051.82	\$673,722.80
DAM LOSSES	(\$1,412,044.98)	(\$1,191,291.80)	(\$1,267,204.15)	(\$1,107,092.14)	(\$1,177,188.28)	(\$1,044,794.71)	(\$1,048,112.33)
BALANCING ENERGY	(\$185,515.18)	(\$250,083.75)	(\$142,486.86)	\$33,052.76	(\$190,932.76)	(\$157,460.45)	(\$157,488.46)
BALANCING LOSSES	\$111,007.15	\$59,057.87	\$41,039.50	(\$18,309.69)	\$10,132.25	\$83,975.07	(\$19,606.97)
BALANCING CONGESTION	\$3,389,197.78	\$1,519,995.29	\$359,857.24	\$184,371.56	\$141,708.00	\$361,770.80	\$442,798.35
FAILED IMPORT CHARGE	(\$13,945.21)	(\$1,452.21)	\$0.00	(\$550.54)	(\$2,705.99)	\$0.00	(\$543.97)
	10	11	12	13	14	15	16
DAM ENERGY	\$700,174.31	\$684,564.55	\$629,354.40	\$810,039.80	\$762,143.95	\$842,522.82	\$795,249.53
DAM LOSSES	(\$1,286,254.41)	(\$1,285,203.82)	(\$1,318,427.17)	(\$1,247,396.43)	(\$1,155,406.99)	(\$1,413,764.42)	(\$1,498,929.65)
BALANCING ENERGY	(\$113,696.86)	(\$186,598.80)	(\$242,782.88)	(\$195,946.05)	(\$250,587.31)	(\$221,315.31)	(\$123,845.23)
BALANCING LOSSES	\$35,334.66	\$97,479.76	\$105,408.97	\$92,588.59	\$69,416.32	\$96,716.74	\$144,022.36
BALANCING CONGESTION	\$253,330.77	\$3,281,330.58	\$1,138,234.75	\$1,169,895.01	\$451,496.00	\$214,067.96	\$2,025,527.05
FAILED IMPORT CHARGE	\$0.00	(\$135.52)	(\$2,323.76)	(\$39.82)	(\$1,108.07)	\$0.00	(\$1,274.04)
	17	18	19	20	21	22	23
DAM ENERGY	\$1,125,053.26	\$1,448,372.68	\$1,171,980.86	\$1,093,807.23	\$1,040,115.24	\$966,160.16	\$1,032,058.44
DAM LOSSES	(\$1,667,502.02)	(\$1,991,355.76)	(\$1,972,684.90)	(\$1,617,440.43)	(\$1,492,475.71)	(\$1,521,828.44)	(\$1,563,122.05)
BALANCING ENERGY	(\$425,211.94)	(\$251,846.43)	(\$233,439.20)	(\$312,125.74)	(\$433,766.25)	(\$238,508.23)	(\$250,185.13)
BALANCING LOSSES	(\$63,827.80)	(\$14,355.09)	\$107,113.19	\$104,741.40	\$107,847.89	\$87,473.17	\$83,833.21
BALANCING CONGESTION	\$3,666,955.73	\$4,123,429.32	\$665,371.05	\$156,941.11	\$1,381,306.91	\$466,050.91	\$68,698.66
FAILED IMPORT CHARGE	(\$834.34)	(\$1,823.83)	(\$1,491.58)	(\$84.24)	\$0.00	(\$1,840.86)	(\$36.29)
	24	25	26	27	28	29	30
DAM ENERGY	\$1,011,351.46	\$1,039,105.42	\$1,137,828.69	\$1,480,396.78	\$1,218,491.18	\$1,112,551.01	\$972,778.27
DAM LOSSES	(\$1,573,219.28)	(\$1,654,330.07)	(\$1,986,812.27)	(\$1,920,785.92)	(\$1,975,837.56)	(\$1,671,639.45)	(\$1,991,448.14)
BALANCING ENERGY	(\$238,146.74)	(\$290,843.78)	(\$393,557.35)	(\$548,041.29)	(\$413,447.81)	(\$308,622.23)	(\$148,812.62)
BALANCING LOSSES	\$110,689.86	\$144,681.33	\$174,481.82	\$144,511.11	\$86,846.96	\$101,646.37	\$197,528.37
BALANCING CONGESTION	\$309,880.26	\$54,943.42	\$127,509.57	\$2,495,920.11	\$4,378,218.17	\$1,327,566.90	\$2,877,109.09
FAILED IMPORT CHARGE	\$0.00	\$0.00	(\$319.86)	(\$5,253.66)	(\$304.33)	(\$2,029.91)	(\$6,043.74)
	31						
DAM ENERGY	\$1,406,506.95						
DAM LOSSES	(\$2,374,773.72)						
BALANCING ENERGY	(\$373,677.79)						
BALANCING LOSSES	\$150,562.37						
BALANCING CONGESTION	\$1,515,870.36						
FAILED IMPORT CHARGE	(\$3,847.71)						



SETTLEMENTS REPORT
 JULY 2006 SETTLEMENT ADJUSTMENT
 DECEMBER 7, 2006

SETTLEMENT ADJUSTMENT MARKET RESIDUALS DELTA ANALYSIS

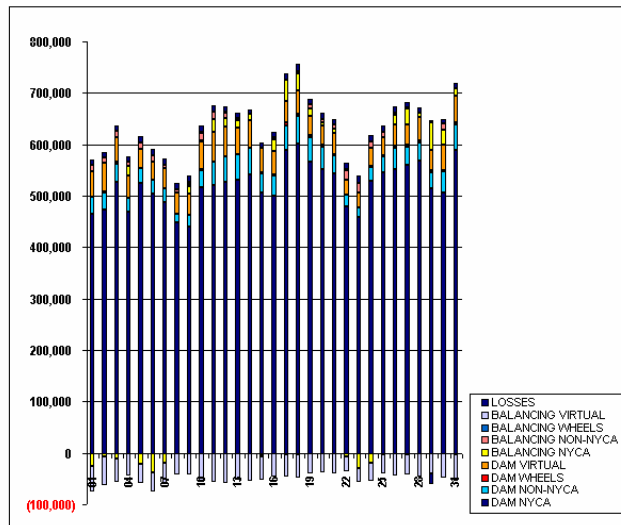
	MONDAY	TUESDAY	WEDNESDAY	THURSDAY	FRIDAY	SATURDAY	SUNDAY
						1	2
DAM ENERGY						\$0.00	\$0.00
DAM LOSSES						\$0.00	\$0.00
BALANCING ENERGY						\$7,413.39	\$514.82
BALANCING LOSSES						\$788.08	\$272.17
BALANCING CONGESTION						\$85.39	\$128.76
FAILED IMPORT CHARGE						\$0.12	\$0.06
	3	4	5	6	7	8	9
DAM ENERGY	\$0.00	\$0.00	\$0.00	\$0.00	\$0.00	\$0.00	\$0.00
DAM LOSSES	\$0.00	\$0.00	\$0.00	\$0.00	\$0.00	\$0.00	\$0.00
BALANCING ENERGY	\$452.47	(\$897.85)	\$1,305.75	\$987.55	\$1,665.93	\$204.96	\$247.84
BALANCING LOSSES	(\$46.21)	(\$158.44)	(\$133.21)	(\$67.65)	\$47.51	(\$59.68)	(\$67.54)
BALANCING CONGESTION	\$117.37	\$150.70	\$407.74	\$4.29	\$48.46	\$270.68	\$255.30
FAILED IMPORT CHARGE	\$0.17	(\$0.05)	\$0.00	(\$0.04)	(\$0.09)	\$0.00	(\$0.12)
	10	11	12	13	14	15	16
DAM ENERGY	\$0.00	\$0.00	\$0.00	\$0.00	\$0.00	\$0.00	\$0.00
DAM LOSSES	\$0.00	\$0.00	\$0.00	\$0.00	\$0.00	\$0.00	\$0.00
BALANCING ENERGY	\$496.13	\$882.39	\$2,279.25	\$1,494.46	\$1,650.70	\$421.76	\$138.75
BALANCING LOSSES	(\$86.89)	\$88.83	\$70.49	\$120.25	\$100.53	(\$30.16)	(\$72.07)
BALANCING CONGESTION	\$17.08	\$219.72	(\$698.56)	\$328.12	\$633.53	\$493.48	\$891.70
FAILED IMPORT CHARGE	\$0.00	\$0.08	\$0.10	\$0.07	\$0.11	\$0.00	\$0.18
	17	18	19	20	21	22	23
DAM ENERGY	\$0.00	\$0.00	\$0.00	\$0.00	\$0.00	\$0.00	\$0.00
DAM LOSSES	\$0.00	\$0.00	\$0.00	\$0.00	\$0.00	\$0.00	\$0.00
BALANCING ENERGY	\$257.88	(\$588.68)	(\$302.22)	(\$4,325.77)	(\$29,774.07)	(\$2,211.61)	(\$2,924.89)
BALANCING LOSSES	(\$43.30)	(\$87.60)	(\$77.50)	(\$393.60)	(\$4,587.13)	(\$1,067.62)	(\$835.63)
BALANCING CONGESTION	\$729.21	(\$7,114.54)	\$132.32	(\$349.40)	(\$81,100.61)	(\$52,224.94)	(\$7,425.45)
FAILED IMPORT CHARGE	\$0.13	(\$0.08)	(\$0.06)	(\$0.02)	\$0.00	\$0.05	\$0.03
	24	25	26	27	28	29	30
DAM ENERGY	\$0.00	\$0.00	\$0.00	\$0.00	\$0.00	\$0.00	\$0.00
DAM LOSSES	\$0.00	\$0.00	\$0.00	\$0.00	\$0.00	\$0.00	\$0.00
BALANCING ENERGY	\$703.14	(\$8,862.21)	(\$119.42)	\$38,108.50	\$33,459.75	\$1,090,190.15	\$87,864.16
BALANCING LOSSES	\$24.13	(\$814.78)	(\$494.42)	\$2,681.76	\$2,579.12	\$104,102.12	\$8,269.73
BALANCING CONGESTION	\$67.77	(\$10.66)	\$149.67	\$83.38	\$170,390.18	\$1,076,398.43	\$132,709.39
FAILED IMPORT CHARGE	\$0.00	\$0.00	(\$0.03)	\$0.11	\$0.04	(\$0.10)	\$0.09
	31						
DAM ENERGY	\$0.00						
DAM LOSSES	\$0.00						
BALANCING ENERGY	\$5,890.54						
BALANCING LOSSES	\$122.24						
BALANCING CONGESTION	(\$9,691.76)						
FAILED IMPORT CHARGE	\$4,201.51						



SETTLEMENTS REPORT
 JULY 2006 SETTLEMENT ADJUSTMENT
 DECEMBER 7, 2006

INITIAL SETTLEMENT MARKET WITHDRAWALS ANALYSIS

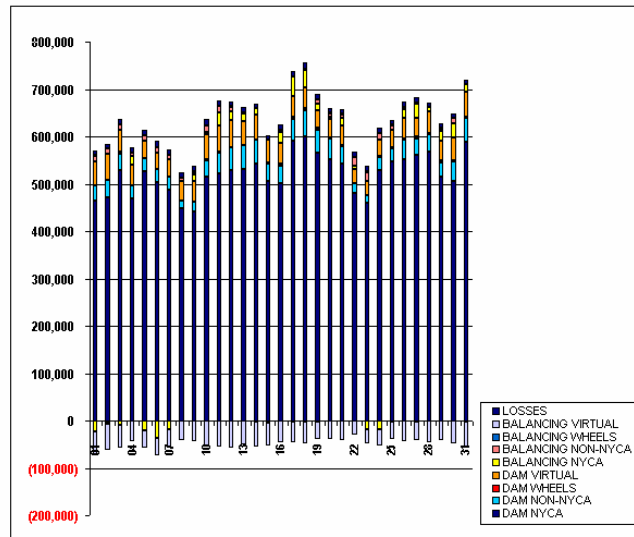
	MONDAY	TUESDAY	WEDNESDAY	THURSDAY	FRIDAY	SATURDAY	SUNDAY
						1	2
DAM NYCA						464,987	472,230
DAM NON-NYCA						32,078	34,901
DAM WHEELS						0	1,000
DAM VIRTUAL						50,964	55,129
BALANCING NYCA						(24,800)	(6,895)
BALANCING NON-NYCA						11,716	11,175
BALANCING WHEELS						245	(150)
BALANCING VIRTUAL						(50,964)	(55,129)
UFE/LOSSES						10,965	9,805
	3	4	5	6	7	8	9
DAM NYCA	527,733	469,063	525,322	503,695	488,043	448,064	440,483
DAM NON-NYCA	34,994	26,697	28,819	26,550	26,207	16,879	21,262
DAM WHEELS	4,405	0	0	0	0	0	0
DAM VIRTUAL	47,372	43,827	36,470	36,341	38,577	40,378	43,064
BALANCING NYCA	(10,070)	17,414	(21,904)	(38,255)	(19,680)	(1,596)	14,554
BALANCING NON-NYCA	11,615	8,359	12,375	11,422	7,441	7,858	4,419
BALANCING WHEELS	0	0	0	0	0	0	2,274
BALANCING VIRTUAL	(47,372)	(43,827)	(36,469)	(36,340)	(38,577)	(40,378)	(43,064)
UFE/LOSSES	11,363	10,595	11,361	13,232	12,361	11,406	12,263
	10	11	12	13	14	15	16
DAM NYCA	515,821	521,404	527,612	530,699	541,561	506,042	500,216
DAM NON-NYCA	34,411	44,668	46,437	50,182	51,402	36,394	38,417
DAM WHEELS	750	1,000	1,195	632	1,000	3,000	3,000
DAM VIRTUAL	53,772	56,305	57,983	51,650	53,066	46,950	45,206
BALANCING NYCA	2,851	25,697	16,739	14,219	11,430	(4,977)	22,021
BALANCING NON-NYCA	14,701	13,663	10,558	3,048	(1,437)	784	4,160
BALANCING WHEELS	1,157	1,465	406	266	812	(1,225)	(246)
BALANCING VIRTUAL	(53,772)	(56,305)	(57,983)	(51,650)	(53,066)	(46,348)	(45,206)
UFE/LOSSES	12,326	11,691	11,666	11,280	9,336	10,507	11,205
	17	18	19	20	21	22	23
DAM NYCA	589,955	600,368	565,297	550,808	543,066	480,293	458,803
DAM NON-NYCA	47,052	54,137	49,272	45,234	35,350	21,941	17,891
DAM WHEELS	4,839	4,280	3,555	2,250	3,000	0	0
DAM VIRTUAL	43,025	45,551	37,957	38,909	40,606	29,499	28,792
BALANCING NYCA	40,757	34,511	12,925	4,659	8,614	(6,906)	(28,778)
BALANCING NON-NYCA	(1,266)	2,936	7,954	6,749	7,125	18,439	19,727
BALANCING WHEELS	(1,270)	(2,752)	(1,282)	439	222	586	200
BALANCING VIRTUAL	(43,024)	(45,551)	(37,957)	(38,909)	(40,606)	(29,499)	(28,792)
UFE/LOSSES	11,644	13,843	11,812	11,481	10,744	13,161	12,943
	24	25	26	27	28	29	30
DAM NYCA	528,049	546,540	551,127	560,896	567,689	515,232	505,779
DAM NON-NYCA	27,408	29,106	41,263	35,011	36,062	30,223	40,984
DAM WHEELS	2,040	2,170	3,923	3,467	3,336	3,180	3,300
DAM VIRTUAL	35,158	36,687	43,129	40,202	45,745	41,024	48,317
BALANCING NYCA	(19,173)	(3,658)	17,533	30,279	9,386	52,225	30,170
BALANCING NON-NYCA	13,390	9,369	4,905	2,845	(331)	4,597	11,210
BALANCING WHEELS	125	616	(673)	(2,017)	(107)	573	250
BALANCING VIRTUAL	(35,159)	(36,687)	(43,129)	(40,202)	(45,745)	(41,024)	(48,316)
UFE/LOSSES	12,418	11,910	11,152	10,318	9,804	(19,952)	8,525
	31						
DAM NYCA	589,363						
DAM NON-NYCA	49,132						
DAM WHEELS	3,811						
DAM VIRTUAL	52,754						
BALANCING NYCA	13,985						
BALANCING NON-NYCA	(2,008)						
BALANCING WHEELS	(22)						
BALANCING VIRTUAL	(52,754)						
UFE/LOSSES	11,025						



SETTLEMENTS REPORT
 JULY 2006 SETTLEMENT ADJUSTMENT
 DECEMBER 7, 2006

4-MONTH SETTLEMENT ADJUSTMENT MARKET WITHDRAWALS ANALYSIS

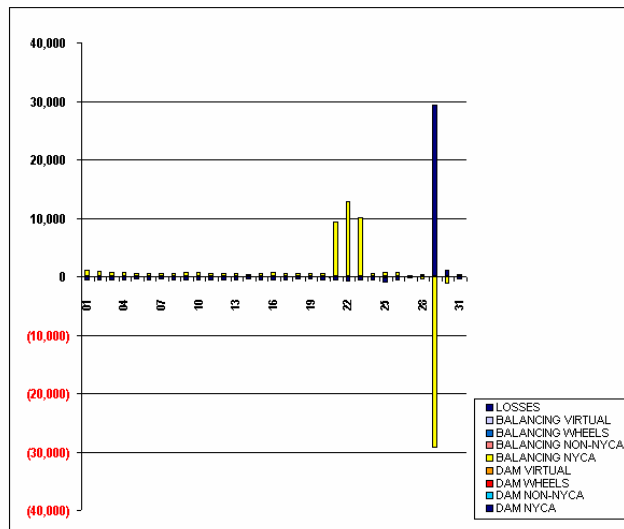
	MONDAY	TUESDAY	WEDNESDAY	THURSDAY	FRIDAY	SATURDAY	SUNDAY
						1	2
DAM NYCA						464,987	472,230
DAM NON-NYCA						32,078	34,901
DAM WHEELS						0	1,000
DAM VIRTUAL						50,964	55,129
BALANCING NYCA						(23,526)	(5,743)
BALANCING NON-NYCA						11,716	11,175
BALANCING WHEELS						245	(150)
BALANCING VIRTUAL						(50,964)	(55,129)
UFE/LOSSES						10,296	9,079
	3	4	5	6	7	8	9
DAM NYCA	527,733	469,063	525,322	503,695	488,043	448,064	440,463
DAM NON-NYCA	34,994	26,897	28,819	26,550	26,207	16,979	21,262
DAM WHEELS	4,405	0	0	0	0	0	0
DAM VIRTUAL	47,372	43,827	36,470	36,341	38,577	40,378	43,064
BALANCING NYCA	(9,359)	18,201	(21,359)	(37,690)	(19,193)	(957)	15,200
BALANCING NON-NYCA	11,615	8,359	12,375	11,422	7,441	7,856	4,419
BALANCING WHEELS	0	0	0	0	0	0	2,274
BALANCING VIRTUAL	(47,372)	(43,827)	(36,469)	(36,340)	(38,577)	(40,378)	(43,064)
UFE/LOSSES	10,630	9,805	11,323	12,589	11,764	10,828	11,592
	10	11	12	13	14	15	16
DAM NYCA	515,821	521,404	527,612	530,699	541,561	506,042	500,216
DAM NON-NYCA	34,411	44,669	48,457	50,182	51,402	36,394	38,417
DAM WHEELS	750	1,000	1,195	632	1,000	3,000	3,000
DAM VIRTUAL	53,772	56,305	57,983	51,650	53,066	46,950	45,206
BALANCING NYCA	3,498	26,186	17,328	14,768	11,856	(4,363)	22,751
BALANCING NON-NYCA	14,701	13,663	10,358	3,048	(1,437)	784	4,160
BALANCING WHEELS	1,157	1,465	406	266	812	(1,225)	(248)
BALANCING VIRTUAL	(53,772)	(56,305)	(57,983)	(51,650)	(53,066)	(46,949)	(45,206)
UFE/LOSSES	11,638	11,001	10,979	10,612	8,797	9,808	10,409
	17	18	19	20	21	22	23
DAM NYCA	589,555	600,368	565,297	550,808	543,066	480,293	458,803
DAM NON-NYCA	47,052	54,137	49,272	45,234	35,350	21,941	17,891
DAM WHEELS	4,839	4,280	3,555	2,250	3,000	0	0
DAM VIRTUAL	43,025	45,551	37,957	38,909	40,606	29,499	28,792
BALANCING NYCA	41,382	34,990	13,414	5,196	17,965	5,908	(18,630)
BALANCING NON-NYCA	(1,266)	2,938	7,954	6,748	7,125	18,439	19,727
BALANCING WHEELS	(1,270)	(2,752)	(1,282)	439	222	586	200
BALANCING VIRTUAL	(43,024)	(45,551)	(37,957)	(38,909)	(40,606)	(29,499)	(28,792)
UFE/LOSSES	10,879	13,237	11,234	10,838	10,042	12,250	12,133
	24	25	26	27	28	29	30
DAM NYCA	528,049	546,540	551,127	560,896	567,689	515,232	505,779
DAM NON-NYCA	27,408	29,106	41,283	35,011	36,062	30,223	40,984
DAM WHEELS	2,040	2,170	3,923	3,467	3,336	3,180	3,300
DAM VIRTUAL	35,158	36,687	43,129	40,202	45,745	41,024	48,317
BALANCING NYCA	(18,606)	(2,896)	18,281	29,980	8,888	22,778	28,966
BALANCING NON-NYCA	13,390	9,168	4,905	2,845	(331)	4,597	11,201
BALANCING WHEELS	125	616	(673)	(2,017)	(107)	573	250
BALANCING VIRTUAL	(35,158)	(36,687)	(43,129)	(40,202)	(45,745)	(41,024)	(48,316)
UFE/LOSSES	11,736	11,017	10,421	10,559	10,223	9,411	9,680
	31						
DAM NYCA	589,363						
DAM NON-NYCA	48,132						
DAM WHEELS	3,811						
DAM VIRTUAL	52,754						
BALANCING NYCA	14,366						
BALANCING NON-NYCA	(1,955)						
BALANCING WHEELS	(22)						
BALANCING VIRTUAL	(52,754)						
UFE/LOSSES	10,490						



SETTLEMENTS REPORT
 JULY 2006 SETTLEMENT ADJUSTMENT
 DECEMBER 7, 2006

SETTLEMENT ADJUSTMENT MARKET WITHDRAWALS DELTA ANALYSIS

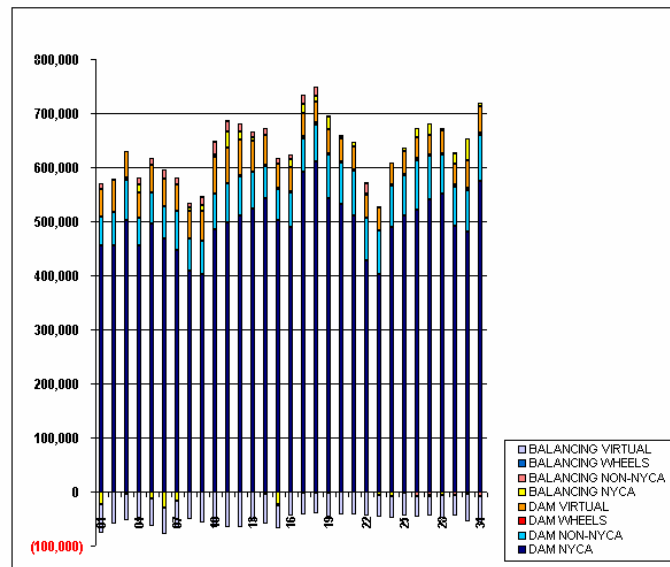
	MONDAY	TUESDAY	WEDNESDAY	THURSDAY	FRIDAY	SATURDAY	SUNDAY
						1	2
DAM NYCA						0	0
DAM NON-NYCA						0	0
DAM WHEELS						0	0
DAM VIRTUAL						0	0
BALANCING NYCA						1,075	863
BALANCING NON-NYCA						0	0
BALANCING WHEELS						0	0
BALANCING VIRTUAL						0	0
UFE/LOSSES						(669)	(729)
	3	4	5	6	7	8	9
DAM NYCA	0	0	0	0	0	0	0
DAM NON-NYCA	0	0	0	0	0	0	0
DAM WHEELS	0	0	0	0	0	0	0
DAM VIRTUAL	0	0	0	0	0	0	0
BALANCING NYCA	711	787	545	585	487	640	646
BALANCING NON-NYCA	0	0	0	0	0	0	0
BALANCING WHEELS	0	0	0	0	0	0	0
BALANCING VIRTUAL	0	0	0	0	0	0	0
UFE/LOSSES	(732)	(790)	(638)	(643)	(597)	(658)	(671)
	10	11	12	13	14	15	16
DAM NYCA	0	0	0	0	0	0	0
DAM NON-NYCA	0	0	0	0	0	0	0
DAM WHEELS	0	0	0	0	0	0	0
DAM VIRTUAL	0	0	0	0	0	0	0
BALANCING NYCA	647	489	590	550	426	614	729
BALANCING NON-NYCA	0	0	0	0	0	0	0
BALANCING WHEELS	0	0	0	0	0	0	0
BALANCING VIRTUAL	0	0	0	0	0	0	0
UFE/LOSSES	(688)	(690)	(687)	(668)	(540)	(700)	(796)
	17	18	19	20	21	22	23
DAM NYCA	0	0	0	0	0	0	0
DAM NON-NYCA	0	0	0	0	0	0	0
DAM WHEELS	0	0	0	0	0	0	0
DAM VIRTUAL	0	0	0	0	0	0	0
BALANCING NYCA	635	479	489	537	9,350	12,814	10,149
BALANCING NON-NYCA	0	0	0	0	0	0	0
BALANCING WHEELS	0	0	0	0	0	0	0
BALANCING VIRTUAL	0	0	0	0	0	0	0
UFE/LOSSES	(785)	(606)	(578)	(643)	(782)	(910)	(610)
	24	25	26	27	28	29	30
DAM NYCA	0	0	0	0	0	0	0
DAM NON-NYCA	0	0	0	0	0	0	0
DAM WHEELS	0	0	0	0	0	0	0
DAM VIRTUAL	0	0	0	0	0	0	0
BALANCING NYCA	567	781	748	(299)	(488)	(29,447)	(1,204)
BALANCING NON-NYCA	0	(201)	0	0	0	0	(9)
BALANCING WHEELS	0	0	0	0	0	0	0
BALANCING VIRTUAL	0	0	0	0	0	0	0
UFE/LOSSES	(680)	(894)	(731)	241	419	29,363	1,155
	31						
DAM NYCA	0						
DAM NON-NYCA	0						
DAM WHEELS	0						
DAM VIRTUAL	0						
BALANCING NYCA	402						
BALANCING NON-NYCA	53						
BALANCING WHEELS	0						
BALANCING VIRTUAL	0						
UFE/LOSSES	(595)						



SETTLEMENTS REPORT
 JULY 2006 SETTLEMENT ADJUSTMENT
 DECEMBER 7, 2006

INITIAL SETTLEMENT MARKET SUPPLY ANALYSIS

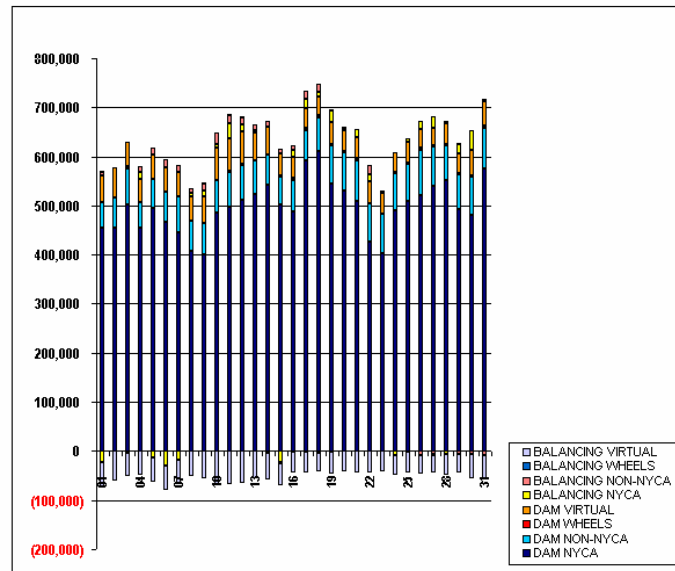
	MONDAY	TUESDAY	WEDNESDAY	THURSDAY	FRIDAY	SATURDAY	SUNDAY
						1	2
DAM NYCA						454,760	455,872
DAM NON-NYCA						52,897	60,476
DAM WHEELS						0	1,000
DAM VIRTUAL						52,408	59,753
BALANCING NYCA						(23,305)	596
BALANCING NON-NYCA						9,295	826
BALANCING WHEELS						245	(150)
BALANCING VIRTUAL						(52,408)	(59,753)
	3	4	5	6	7	8	9
DAM NYCA	501,180	455,710	495,717	467,143	445,768	407,998	401,130
DAM NON-NYCA	74,450	50,360	57,367	61,217	72,372	60,223	62,128
DAM WHEELS	4,405	0	0	0	0	0	0
DAM VIRTUAL	48,978	47,952	51,783	49,342	50,370	51,524	56,421
BALANCING NYCA	(2,605)	14,877	(12,072)	(29,123)	(16,995)	5,702	9,730
BALANCING NON-NYCA	(623)	11,380	12,793	17,406	13,226	8,867	15,169
BALANCING WHEELS	0	0	0	0	0	0	2,274
BALANCING VIRTUAL	(46,978)	(47,952)	(51,783)	(49,342)	(50,370)	(51,524)	(56,420)
	10	11	12	13	14	15	16
DAM NYCA	484,722	496,992	511,070	522,919	543,199	502,477	489,080
DAM NON-NYCA	66,155	72,324	72,312	68,714	59,876	56,657	63,441
DAM WHEELS	750	1,000	1,195	632	1,000	3,000	3,000
DAM VIRTUAL	66,877	66,665	66,173	55,898	55,728	44,281	44,121
BALANCING NYCA	5,542	29,688	14,827	6,400	(3,489)	(23,509)	14,629
BALANCING NON-NYCA	23,690	18,269	15,041	11,394	12,204	9,909	8,468
BALANCING WHEELS	1,157	1,465	406	266	812	(1,225)	(248)
BALANCING VIRTUAL	(66,877)	(66,665)	(66,173)	(55,898)	(55,728)	(44,281)	(44,120)
	17	18	19	20	21	22	23
DAM NYCA	591,153	611,275	543,600	530,997	510,145	426,702	401,758
DAM NON-NYCA	61,652	67,957	79,006	77,585	82,682	78,927	81,281
DAM WHEELS	4,939	4,280	3,555	2,250	3,000	0	0
DAM VIRTUAL	41,681	37,964	44,741	42,008	42,871	43,777	41,547
BALANCING NYCA	18,643	10,446	21,906	2,502	7,744	1,364	(5,952)
BALANCING NON-NYCA	16,694	16,119	2,748	4,431	1,198	19,935	3,499
BALANCING WHEELS	(1,270)	(2,752)	(1,282)	439	222	586	200
BALANCING VIRTUAL	(41,681)	(37,964)	(44,741)	(42,008)	(42,871)	(43,777)	(41,547)
	24	25	26	27	28	29	30
DAM NYCA	489,251	509,826	520,811	539,661	550,778	492,348	481,748
DAM NON-NYCA	77,060	76,088	92,379	89,559	71,620	71,559	76,190
DAM WHEELS	2,940	2,170	3,923	3,467	3,396	3,180	3,300
DAM VIRTUAL	40,536	42,000	39,058	35,271	42,995	38,257	50,973
BALANCING NYCA	(8,132)	6,131	17,178	22,624	(6,509)	20,752	40,594
BALANCING NON-NYCA	94	(1,642)	(7,485)	(6,912)	3,673	(5,952)	(5,130)
BALANCING WHEELS	125	616	(673)	(2,017)	(107)	573	250
BALANCING VIRTUAL	(40,536)	(41,999)	(39,058)	(35,271)	(42,994)	(38,257)	(50,973)
	31						
DAM NYCA	575,409						
DAM NON-NYCA	85,689						
DAM WHEELS	3,811						
DAM VIRTUAL	48,946						
BALANCING NYCA	6,529						
BALANCING NON-NYCA	(7,970)						
BALANCING WHEELS	(22)						
BALANCING VIRTUAL	(48,946)						



SETTLEMENTS REPORT
 JULY 2006 SETTLEMENT ADJUSTMENT
 DECEMBER 7, 2006

4-MONTH SETTLEMENT ADJUSTMENT MARKET SUPPLY ANALYSIS

	MONDAY	TUESDAY	WEDNESDAY	THURSDAY	FRIDAY	SATURDAY	SUNDAY
						1	2
DAM NYCA						454,760	455,872
DAM NON-NYCA						52,897	60,476
DAM WHEELS						0	1,000
DAM VIRTUAL						52,488	59,753
BALANCING NYCA						(22,900)	733
BALANCING NON-NYCA						9,295	826
BALANCING WHEELS						245	(150)
BALANCING VIRTUAL						(52,488)	(59,753)
	3	4	5	6	7	8	9
DAM NYCA	501,180	455,710	495,718	467,143	445,768	407,998	401,130
DAM NON-NYCA	74,450	50,360	57,367	61,217	72,372	60,223	62,128
DAM WHEELS	4,405	0	0	0	0	0	0
DAM VIRTUAL	48,978	47,952	51,783	49,342	50,370	51,524	56,421
BALANCING NYCA	(2,627)	14,874	(12,167)	(29,201)	(17,104)	5,684	9,705
BALANCING NON-NYCA	(623)	11,380	12,793	17,406	13,226	8,867	15,169
BALANCING WHEELS	0	0	0	0	0	0	2,274
BALANCING VIRTUAL	(48,978)	(47,952)	(51,783)	(49,342)	(50,370)	(51,524)	(56,420)
	10	11	12	13	14	15	16
DAM NYCA	484,722	496,992	511,070	522,919	543,199	502,477	489,080
DAM NON-NYCA	66,155	72,324	72,312	68,714	59,876	56,657	63,441
DAM WHEELS	750	1,000	1,195	632	1,000	3,000	3,000
DAM VIRTUAL	66,877	66,665	66,173	55,898	55,728	44,281	44,121
BALANCING NYCA	5,501	29,487	14,730	6,281	(3,603)	(23,595)	14,562
BALANCING NON-NYCA	23,690	18,269	15,041	11,394	12,204	9,909	8,468
BALANCING WHEELS	1,157	1,465	406	266	812	(1,225)	(248)
BALANCING VIRTUAL	(66,877)	(66,665)	(66,173)	(55,898)	(55,728)	(44,281)	(44,120)
	17	18	19	20	21	22	23
DAM NYCA	591,153	611,275	543,600	531,010	510,145	426,702	401,758
DAM NON-NYCA	61,652	67,957	79,006	77,585	82,682	78,927	81,281
DAM WHEELS	4,839	4,280	3,555	2,250	3,000	0	0
DAM VIRTUAL	41,681	37,964	44,741	42,008	42,871	43,777	41,547
BALANCING NYCA	18,513	10,319	21,817	2,382	16,393	15,267	3,366
BALANCING NON-NYCA	16,694	16,119	2,748	4,431	1,198	19,935	3,499
BALANCING WHEELS	(1,270)	(2,752)	(1,282)	439	222	586	200
BALANCING VIRTUAL	(41,681)	(37,964)	(44,741)	(42,008)	(42,871)	(43,777)	(41,547)
	24	25	26	27	28	29	30
DAM NYCA	489,251	509,863	520,811	539,672	550,778	492,348	481,748
DAM NON-NYCA	77,060	76,088	92,379	80,559	71,620	71,559	76,190
DAM WHEELS	2,040	2,170	3,923	3,467	3,336	3,180	3,300
DAM VIRTUAL	40,536	42,000	39,058	35,271	42,995	38,257	50,979
BALANCING NYCA	(8,245)	6,112	17,195	22,554	(6,587)	20,668	40,536
BALANCING NON-NYCA	94	(2,194)	(7,485)	(6,912)	3,673	(5,952)	(5,130)
BALANCING WHEELS	125	616	(673)	(2,017)	(107)	573	250
BALANCING VIRTUAL	(40,536)	(41,999)	(39,058)	(35,271)	(42,994)	(38,257)	(50,979)
	31						
DAM NYCA	575,409						
DAM NON-NYCA	83,689						
DAM WHEELS	3,811						
DAM VIRTUAL	46,946						
BALANCING NYCA	6,388						
BALANCING NON-NYCA	(7,970)						
BALANCING WHEELS	(22)						
BALANCING VIRTUAL	(46,946)						



SETTLEMENTS REPORT
 JULY 2006 SETTLEMENT ADJUSTMENT
 DECEMBER 7, 2006

SETTLEMENT ADJUSTMENT MARKET SUPPLY DELTA ANALYSIS

	MONDAY	TUESDAY	WEDNESDAY	THURSDAY	FRIDAY	SATURDAY	SUNDAY
DAM NYCA						1	2
DAM NON-NYCA						0	0
DAM WHEELS						0	0
DAM VIRTUAL						0	0
BALANCING NYCA						406	137
BALANCING NON-NYCA						0	0
BALANCING WHEELS						0	0
BALANCING VIRTUAL						0	0
	3	4	5	6	7	8	9
DAM NYCA	0	0	1	0	0	0	0
DAM NON-NYCA	0	0	0	0	0	0	0
DAM WHEELS	0	0	0	0	0	0	0
DAM VIRTUAL	0	0	0	0	0	0	0
BALANCING NYCA	(21)	(3)	(94)	(79)	(109)	(18)	(25)
BALANCING NON-NYCA	0	0	0	0	0	0	0
BALANCING WHEELS	0	0	0	0	0	0	0
BALANCING VIRTUAL	0	0	0	0	0	0	0
	10	11	12	13	14	15	16
DAM NYCA	0	0	0	0	0	0	0
DAM NON-NYCA	0	0	0	0	0	0	0
DAM WHEELS	0	0	0	0	0	0	0
DAM VIRTUAL	0	0	0	0	0	0	0
BALANCING NYCA	(41)	(201)	(97)	(118)	(114)	(86)	(67)
BALANCING NON-NYCA	0	0	0	0	0	0	0
BALANCING WHEELS	0	0	0	0	0	0	0
BALANCING VIRTUAL	0	0	0	0	0	0	0
	17	18	19	20	21	22	23
DAM NYCA	0	0	0	13	0	0	0
DAM NON-NYCA	0	0	0	0	0	0	0
DAM WHEELS	0	0	0	0	0	0	0
DAM VIRTUAL	0	0	0	0	0	0	0
BALANCING NYCA	(130)	(127)	(89)	(119)	8,649	11,904	9,338
BALANCING NON-NYCA	0	0	0	0	0	0	0
BALANCING WHEELS	0	0	0	0	0	0	0
BALANCING VIRTUAL	0	0	0	0	0	0	0
	24	25	26	27	28	29	30
DAM NYCA	0	37	0	11	0	0	0
DAM NON-NYCA	0	0	0	0	0	0	0
DAM WHEELS	0	0	0	0	0	0	0
DAM VIRTUAL	0	0	0	0	0	0	0
BALANCING NYCA	(113)	(19)	17	(69)	(78)	(84)	(58)
BALANCING NON-NYCA	0	(552)	0	0	0	0	0
BALANCING WHEELS	0	0	0	0	0	0	0
BALANCING VIRTUAL	0	0	0	0	0	0	0
	31						
DAM NYCA	0						
DAM NON-NYCA	0						
DAM WHEELS	0						
DAM VIRTUAL	0						
BALANCING NYCA	(140)						
BALANCING NON-NYCA	0						
BALANCING WHEELS	0						
BALANCING VIRTUAL	0						

