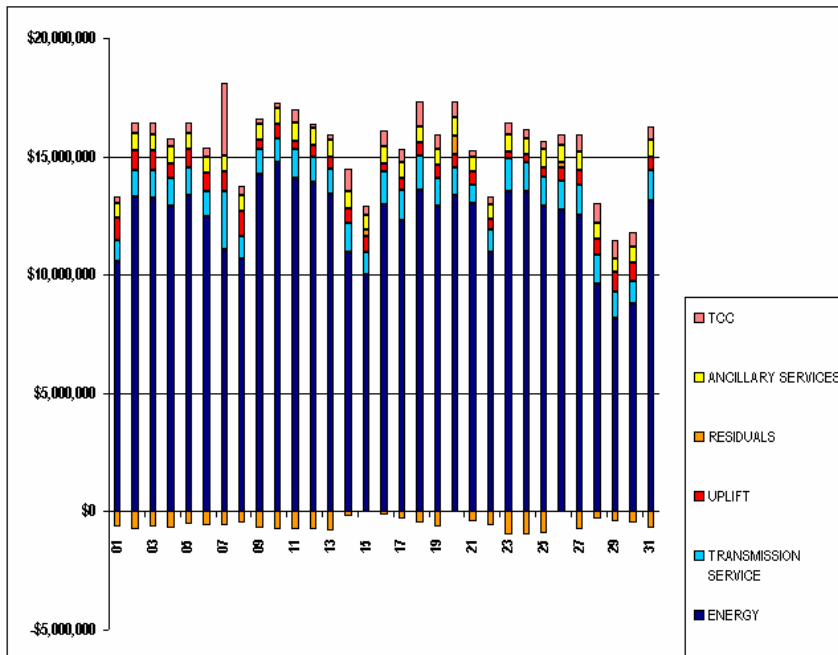


SETTLEMENTS REPORT  
MAY 2005 CLOSEOUT SETTLEMENT  
JANUARY 5, 2007

12-MONTH SETTLEMENT ADJUSTMENT MARKET COSTS ANALYSIS

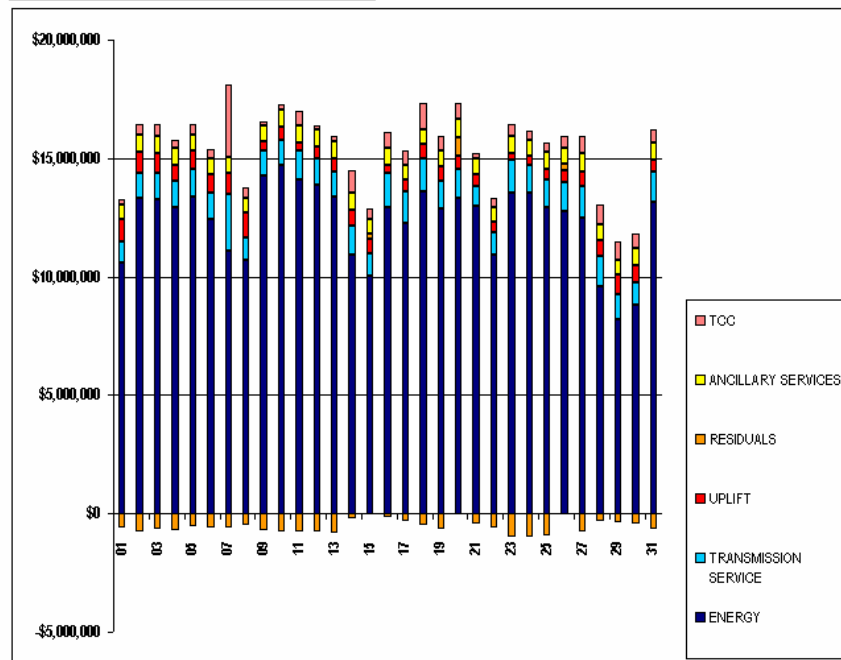
	MONDAY	TUESDAY	WEDNESDAY	THURSDAY	FRIDAY	SATURDAY	SUNDAY
ENERGY							1
TRANSMISSION SERVICE							\$10,584,641.92
UPLIFT							\$883,064.49
RESIDUALS							\$966,296.94
ANCILLARY SERVICES							(\$621,246.30)
TCC							\$606,909.29
							\$246,319.77
	2	3	4	5	6	7	8
ENERGY	\$13,308,708.08	\$13,269,270.33	\$12,939,584.59	\$13,355,811.16	\$12,445,271.66	\$11,091,819.23	\$10,707,312.02
TRANSMISSION SERVICE	\$1,086,660.78	\$1,127,557.33	\$1,124,437.03	\$1,174,079.37	\$1,073,342.97	\$2,414,370.03	\$823,012.53
UPLIFT	\$872,793.17	\$846,161.79	\$659,221.01	\$774,531.06	\$784,113.18	\$875,403.49	\$1,062,034.07
RESIDUALS	(\$755,442.78)	(\$635,810.66)	(\$686,392.24)	(\$563,586.90)	(\$593,747.62)	(\$575,564.00)	(\$498,653.73)
ANCILLARY SERVICES	\$726,127.71	\$699,901.84	\$711,243.50	\$696,606.72	\$683,853.06	\$675,776.31	\$639,856.98
TCC	\$447,034.64	\$607,078.34	\$302,052.45	\$434,618.26	\$381,217.35	\$3,029,478.61	\$427,299.14
	9	10	11	12	13	14	15
ENERGY	\$14,272,273.12	\$14,736,362.02	\$14,086,255.63	\$13,896,196.55	\$13,395,358.32	\$10,937,044.73	\$10,932,401.92
TRANSMISSION SERVICE	\$1,036,464.36	\$1,045,770.92	\$1,239,002.52	\$1,093,555.46	\$1,052,677.39	\$1,223,198.92	\$947,854.46
UPLIFT	\$418,298.09	\$575,492.90	\$347,504.49	\$607,891.98	\$555,873.17	\$647,811.26	\$642,905.18
RESIDUALS	(\$729,798.74)	(\$770,502.48)	(\$749,512.14)	(\$760,140.71)	(\$826,062.77)	(\$195,178.65)	\$269,724.75
ANCILLARY SERVICES	\$673,121.99	\$707,963.14	\$734,015.39	\$701,643.21	\$700,180.55	\$709,022.46	\$606,550.16
TCC	\$171,974.69	\$217,842.94	\$690,792.84	\$190,022.32	\$222,386.14	\$956,770.61	\$423,054.32
	16	17	18	19	20	21	22
ENERGY	\$12,941,445.04	\$12,283,282.71	\$13,576,239.14	\$12,897,057.93	\$13,339,074.08	\$13,010,907.48	\$10,932,433.56
TRANSMISSION SERVICE	\$1,411,377.69	\$1,313,057.11	\$1,436,413.97	\$1,171,102.06	\$1,214,063.67	\$796,164.94	\$961,727.22
UPLIFT	\$365,644.62	\$477,335.21	\$571,312.69	\$571,396.84	\$525,856.66	\$538,306.22	\$439,752.61
RESIDUALS	(\$170,076.05)	(\$299,414.69)	(\$489,389.18)	(\$656,508.65)	\$809,769.53	(\$420,690.56)	(\$578,721.76)
ANCILLARY SERVICES	\$701,257.94	\$664,312.00	\$656,053.73	\$664,309.78	\$753,639.13	\$650,425.20	\$616,809.60
TCC	\$669,770.06	\$660,939.45	\$1,089,361.07	\$634,537.16	\$704,795.46	\$238,074.66	\$373,101.41
	23	24	25	26	27	28	29
ENERGY	\$13,551,594.80	\$13,547,007.83	\$12,935,832.15	\$12,762,044.93	\$12,498,116.30	\$9,605,290.18	\$8,191,857.88
TRANSMISSION SERVICE	\$1,386,497.87	\$1,190,279.91	\$1,183,761.22	\$1,204,172.22	\$1,331,792.21	\$1,242,882.00	\$1,080,128.55
UPLIFT	\$267,300.58	\$340,835.77	\$438,700.13	\$542,863.06	\$606,817.81	\$670,114.24	\$825,249.76
RESIDUALS	(\$983,426.97)	(\$1,007,125.05)	(\$918,271.86)	\$230,481.81	(\$741,474.35)	(\$315,319.10)	(\$401,805.59)
ANCILLARY SERVICES	\$710,868.75	\$705,319.23	\$729,881.22	\$714,400.96	\$750,448.06	\$693,232.90	\$609,638.79
TCC	\$528,270.03	\$354,398.77	\$369,794.01	\$491,083.59	\$727,215.61	\$833,662.36	\$782,244.52
	30	31					
ENERGY	\$8,783,563.18	\$13,156,552.90					
TRANSMISSION SERVICE	\$946,999.99	\$1,255,279.96					
UPLIFT	\$759,670.93	\$542,891.68					
RESIDUALS	(\$452,093.37)	(\$680,745.01)					
ANCILLARY SERVICES	\$686,633.06	\$749,261.60					
TCC	\$619,654.62	\$575,358.14					



SETTLEMENTS REPORT  
MAY 2005 CLOSEOUT SETTLEMENT  
JANUARY 5, 2007

CLOSEOUT SETTLEMENT MARKET COSTS ANALYSIS

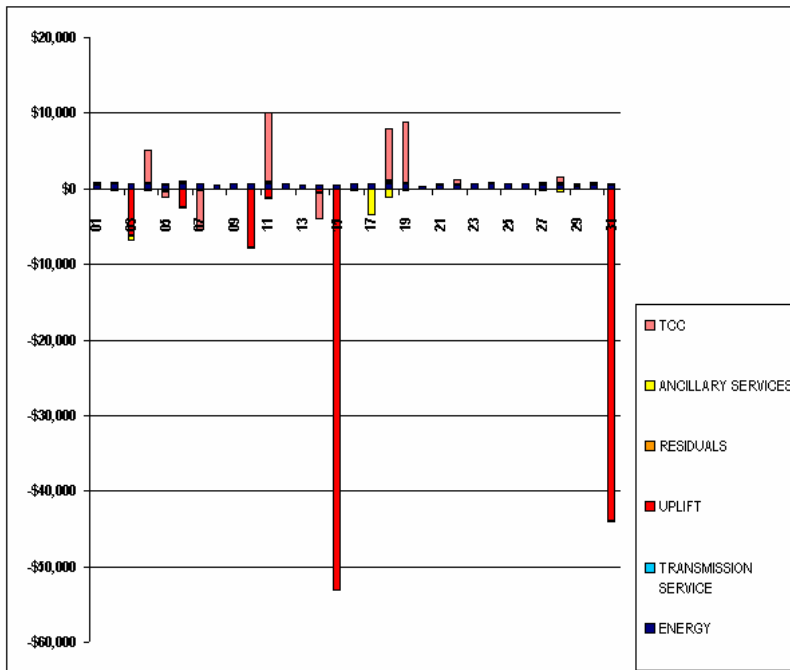
	MONDAY	TUESDAY	WEDNESDAY	THURSDAY	FRIDAY	SATURDAY	SUNDAY
							1
ENERGY							\$10,585,158.49
TRANSMISSION SERVICE							\$882,991.63
UPLIFT							\$866,296.94
RESIDUALS							(\$620,931.05)
ANCILLARY SERVICES							\$606,724.44
TCC							\$246,319.77
	2	3	4	5	6	7	8
ENERGY	\$13,309,370.36	\$13,269,853.78	\$12,940,167.02	\$13,356,349.07	\$12,445,925.56	\$11,092,430.89	\$10,707,758.78
TRANSMISSION SERVICE	\$1,086,571.44	\$1,127,466.35	\$1,124,348.81	\$1,173,943.98	\$1,073,249.08	\$2,414,295.81	\$822,978.22
UPLIFT	\$872,793.03	\$840,031.27	\$659,221.01	\$774,531.05	\$781,720.56	\$875,403.49	\$1,062,094.05
RESIDUALS	(\$755,292.98)	(\$635,712.16)	(\$686,323.15)	(\$563,536.95)	(\$593,699.31)	(\$575,519.21)	(\$498,614.53)
ANCILLARY SERVICES	\$725,819.98	\$699,238.24	\$710,998.11	\$696,350.36	\$669,609.44	\$675,587.95	\$639,770.91
TCC	\$447,034.64	\$507,078.34	\$306,433.84	\$433,651.20	\$381,458.16	\$3,024,253.16	\$427,346.29
	9	10	11	12	13	14	15
ENERGY	\$14,272,959.90	\$14,736,942.49	\$14,086,973.01	\$13,896,818.54	\$13,395,877.99	\$10,937,587.50	\$10,032,859.49
TRANSMISSION SERVICE	\$1,036,403.83	\$1,045,706.88	\$1,238,947.53	\$1,093,496.40	\$1,052,619.52	\$1,223,165.63	\$947,611.96
UPLIFT	\$418,298.09	\$567,629.98	\$346,312.39	\$607,691.90	\$555,873.17	\$647,303.67	\$589,769.99
RESIDUALS	(\$729,763.94)	(\$770,474.94)	(\$749,473.61)	(\$760,121.84)	(\$826,042.82)	(\$195,193.19)	\$269,730.47
ANCILLARY SERVICES	\$672,924.39	\$707,780.88	\$733,750.92	\$701,488.74	\$700,034.10	\$708,947.19	\$606,428.05
TCC	\$171,974.69	\$217,842.94	\$600,181.94	\$190,022.32	\$222,386.14	\$853,305.81	\$423,074.82
	16	17	18	19	20	21	22
ENERGY	\$12,942,051.46	\$12,283,914.43	\$13,576,906.61	\$12,897,705.61	\$13,339,341.50	\$13,011,458.87	\$10,932,928.34
TRANSMISSION SERVICE	\$1,411,328.19	\$1,313,014.13	\$1,436,342.78	\$1,171,038.61	\$1,213,975.30	\$796,090.84	\$961,707.71
UPLIFT	\$365,644.62	\$477,411.89	\$571,679.16	\$571,396.84	\$525,936.90	\$538,306.21	\$439,752.61
RESIDUALS	(\$170,040.03)	(\$299,369.82)	(\$489,339.62)	(\$656,453.55)	\$809,816.15	(\$420,658.76)	(\$578,687.74)
ANCILLARY SERVICES	\$700,961.79	\$660,715.57	\$654,883.09	\$663,934.58	\$753,447.06	\$650,288.70	\$616,728.53
TCC	\$669,780.31	\$560,939.45	\$1,096,128.38	\$642,631.17	\$704,795.46	\$238,082.98	\$373,762.39
	23	24	25	26	27	28	29
ENERGY	\$13,552,211.97	\$13,547,638.67	\$12,936,448.84	\$12,762,655.32	\$12,498,688.62	\$9,605,699.84	\$8,192,245.86
TRANSMISSION SERVICE	\$1,386,423.04	\$1,190,351.03	\$1,183,734.51	\$1,204,170.72	\$1,331,738.17	\$1,243,146.30	\$1,080,089.93
UPLIFT	\$267,300.57	\$340,891.00	\$438,700.13	\$542,863.06	\$806,982.05	\$670,114.24	\$825,249.76
RESIDUALS	(\$983,389.88)	(\$1,007,090.57)	(\$918,236.10)	\$230,524.68	(\$741,450.04)	(\$315,294.21)	(\$401,775.54)
ANCILLARY SERVICES	\$710,769.40	\$705,344.34	\$729,782.29	\$714,177.58	\$750,095.24	\$692,726.16	\$609,508.42
TCC	\$528,148.48	\$354,496.25	\$369,794.01	\$491,120.75	\$727,217.66	\$834,491.93	\$782,522.32
	30	31					
ENERGY	\$8,783,964.90	\$13,157,122.89					
TRANSMISSION SERVICE	\$946,975.48	\$1,255,233.93					
UPLIFT	\$759,670.94	\$498,874.30					
RESIDUALS	(\$452,063.38)	(\$680,707.02)					
ANCILLARY SERVICES	\$686,393.66	\$749,143.66					
TCC	\$620,009.95	\$575,304.79					



SETTLEMENTS REPORT  
MAY 2005 CLOSEOUT SETTLEMENT  
JANUARY 5, 2007

CLOSEOUT SETTLEMENT MARKET COSTS DELTA ANALYSIS

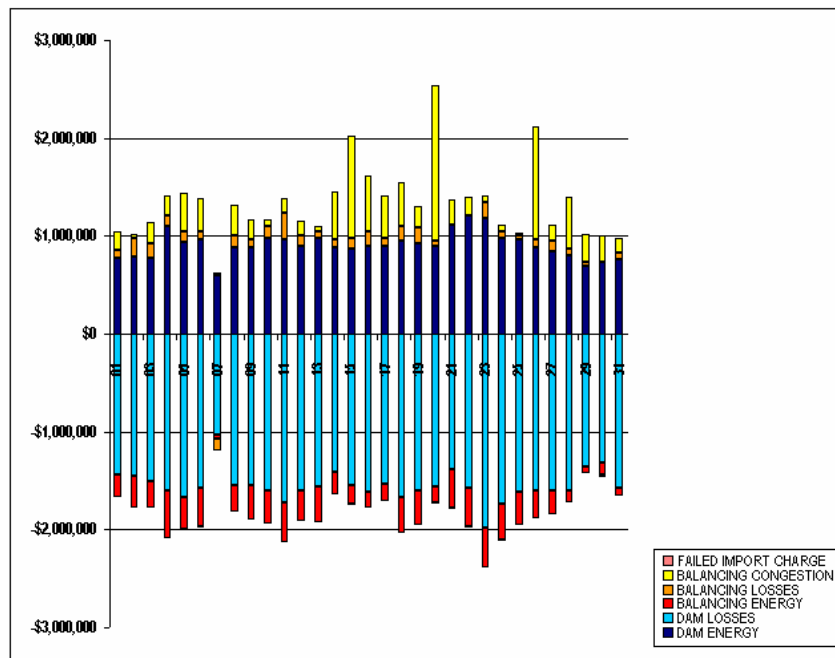
	MONDAY	TUESDAY	WEDNESDAY	THURSDAY	FRIDAY	SATURDAY	SUNDAY
ENERGY							1 \$516.57
TRANSMISSION SERVICE							(\$72.86)
UPLIFT							\$0.00
RESIDUALS							\$315.25
ANCILLARY SERVICES							(\$184.85)
TCC							\$0.00
	2	3	4	5	6	7	8
ENERGY	\$662.28	\$583.45	\$582.43	\$537.91	\$653.90	\$611.66	\$446.76
TRANSMISSION SERVICE	(\$89.34)	(\$90.98)	(\$88.22)	(\$135.39)	(\$93.89)	(\$74.22)	(\$34.31)
UPLIFT	(\$0.14)	(\$6,130.52)	\$0.00	(\$0.01)	(\$2,392.62)	\$0.00	(\$0.02)
RESIDUALS	\$149.80	\$98.50	\$69.09	\$49.95	\$48.31	\$44.79	\$39.20
ANCILLARY SERVICES	(\$307.73)	(\$663.40)	(\$245.39)	(\$256.36)	(\$243.62)	(\$188.36)	(\$86.07)
TCC	\$0.00	\$0.00	\$4,381.39	(\$967.06)	\$240.81	(\$5,225.45)	\$47.15
	9	10	11	12	13	14	15
ENERGY	\$686.78	\$580.47	\$717.38	\$621.99	\$519.67	\$542.77	\$457.57
TRANSMISSION SERVICE	(\$60.53)	(\$64.04)	(\$54.99)	(\$59.06)	(\$57.87)	(\$33.29)	(\$42.50)
UPLIFT	\$0.00	(\$7,862.92)	(\$1,192.10)	(\$0.08)	\$0.00	(\$607.59)	(\$53,135.19)
RESIDUALS	\$34.80	\$27.54	\$38.53	\$18.87	\$19.95	(\$14.54)	\$5.72
ANCILLARY SERVICES	(\$197.60)	(\$182.26)	(\$264.47)	(\$154.47)	(\$146.45)	(\$75.27)	(\$122.11)
TCC	\$0.00	\$0.00	\$9,389.10	\$0.00	\$0.00	(\$3,464.80)	\$20.50
	16	17	18	19	20	21	22
ENERGY	\$606.42	\$631.72	\$667.47	\$647.88	\$267.42	\$551.39	\$494.78
TRANSMISSION SERVICE	(\$49.50)	(\$42.98)	(\$71.19)	(\$63.45)	(\$68.37)	(\$74.10)	(\$19.51)
UPLIFT	\$0.00	\$76.68	\$366.47	\$0.00	\$80.24	(\$0.01)	\$0.00
RESIDUALS	\$36.02	\$44.87	\$49.56	\$55.10	\$46.62	\$31.80	\$34.02
ANCILLARY SERVICES	(\$296.15)	(\$3,596.51)	(\$1,170.64)	(\$375.20)	(\$192.07)	(\$136.50)	(\$81.07)
TCC	\$10.25	\$0.00	\$6,767.31	\$8,094.01	\$0.00	\$8.32	\$660.98
	23	24	25	26	27	28	29
ENERGY	\$617.17	\$630.84	\$617.69	\$610.39	\$572.32	\$409.66	\$387.98
TRANSMISSION SERVICE	(\$74.83)	\$71.12	(\$26.71)	(\$1.50)	(\$54.04)	\$264.30	(\$38.62)
UPLIFT	(\$0.01)	\$55.23	\$0.00	\$0.00	\$164.24	\$0.00	\$0.00
RESIDUALS	\$37.09	\$34.48	\$35.76	\$42.87	\$24.31	\$24.89	\$30.05
ANCILLARY SERVICES	(\$99.35)	\$25.11	(\$98.93)	(\$223.38)	(\$352.82)	(\$506.74)	(\$130.37)
TCC	(\$121.55)	\$97.48	\$0.00	\$37.16	\$2.05	\$829.57	\$277.80
	30	31					
ENERGY	\$401.72	\$569.79					
TRANSMISSION SERVICE	(\$24.51)	(\$46.03)					
UPLIFT	\$0.01	(\$44,007.38)					
RESIDUALS	\$29.99	\$37.99					
ANCILLARY SERVICES	(\$239.40)	(\$117.94)					
TCC	\$355.33	\$26.65					



SETTLEMENTS REPORT  
MAY 2005 CLOSEOUT SETTLEMENT  
JANUARY 5, 2007

12-MONTH SETTLEMENT ADJUSTMENT MARKET RESIDUALS ANALYSIS

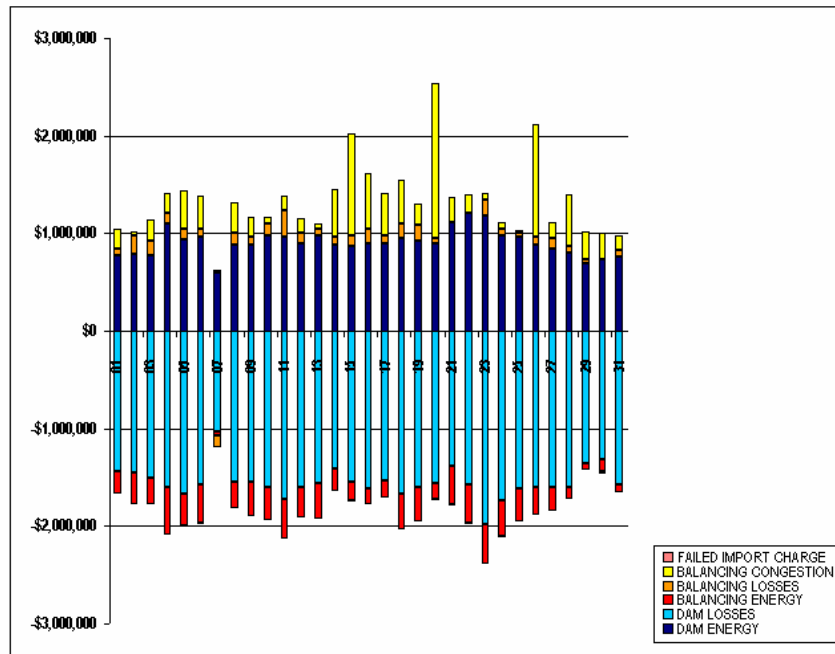
	MONDAY	TUESDAY	WEDNESDAY	THURSDAY	FRIDAY	SATURDAY	SUNDAY
							1
DAM ENERGY							\$76,426.00
DAM LOSSES							(\$1,444,380.68)
BALANCING ENERGY							(\$219,391.43)
BALANCING LOSSES							\$72,000.59
BALANCING CONGESTION							\$194,141.02
FAILED IMPORT CHARGE							(\$41.80)
	2	3	4	5	6	7	8
DAM ENERGY	\$790,522.92	\$773,085.66	\$1,104,741.14	\$931,169.85	\$966,742.65	\$590,665.71	\$883,656.74
DAM LOSSES	(\$1,458,203.72)	(\$1,504,629.24)	(\$1,597,082.62)	(\$1,675,400.64)	(\$1,579,030.06)	(\$1,037,242.29)	(\$1,547,024.94)
BALANCING ENERGY	(\$319,061.67)	(\$278,110.79)	(\$496,168.44)	(\$322,718.53)	(\$395,590.49)	(\$38,840.37)	(\$274,771.60)
BALANCING LOSSES	\$163,266.18	\$152,372.84	\$106,925.12	\$119,711.91	\$78,427.27	(\$118,193.45)	\$115,328.77
BALANCING CONGESTION	\$48,033.51	\$221,470.87	\$195,341.87	\$385,166.69	\$338,635.91	\$29,585.21	\$324,157.30
FAILED IMPORT CHARGE	\$0.00	\$0.00	(\$149.31)	(\$1,516.18)	(\$2,932.90)	(\$1,538.81)	\$0.00
	9	10	11	12	13	14	15
DAM ENERGY	\$879,258.63	\$980,536.03	\$960,995.37	\$893,165.78	\$972,347.18	\$881,458.43	\$862,270.67
DAM LOSSES	(\$1,544,164.55)	(\$1,601,644.27)	(\$1,722,160.42)	(\$1,605,982.66)	(\$1,561,019.22)	(\$1,411,465.48)	(\$1,548,477.78)
BALANCING ENERGY	(\$353,505.71)	(\$336,217.79)	(\$406,091.56)	(\$304,759.79)	(\$362,542.63)	(\$232,168.36)	(\$195,177.30)
BALANCING LOSSES	\$90,200.29	\$114,271.06	\$270,151.05	\$114,803.81	\$75,268.41	\$77,760.68	\$115,327.31
BALANCING CONGESTION	\$202,308.53	\$74,102.11	\$150,710.76	\$145,383.12	\$51,117.73	\$493,141.12	\$1,038,420.06
FAILED IMPORT CHARGE	(\$3,895.93)	(\$1,549.62)	(\$3,117.34)	(\$2,750.97)	(\$1,234.24)	(\$3,905.04)	(\$2,638.21)
	16	17	18	19	20	21	22
DAM ENERGY	\$901,018.63	\$900,871.53	\$946,094.32	\$918,314.34	\$891,759.74	\$1,119,048.06	\$1,213,770.70
DAM LOSSES	(\$1,620,033.69)	(\$1,540,626.75)	(\$1,670,335.67)	(\$1,606,375.19)	(\$1,555,968.43)	(\$1,384,858.37)	(\$1,568,734.41)
BALANCING ENERGY	(\$156,749.33)	(\$167,752.53)	(\$359,697.28)	(\$348,072.25)	(\$174,239.15)	(\$387,778.90)	(\$403,739.69)
BALANCING LOSSES	\$147,055.26	\$77,468.41	\$150,177.36	\$169,670.31	\$58,788.42	(\$12,567.25)	(\$10,359.27)
BALANCING CONGESTION	\$662,152.20	\$431,401.81	\$444,770.63	\$209,954.14	\$1,590,026.42	\$245,677.23	\$190,906.59
FAILED IMPORT CHARGE	(\$3,519.12)	(\$777.16)	(\$398.54)	\$0.00	(\$577.47)	(\$211.33)	(\$565.68)
	23	24	25	26	27	28	29
DAM ENERGY	\$1,175,490.23	\$980,432.56	\$969,686.40	\$887,513.40	\$840,397.08	\$797,897.45	\$688,139.70
DAM LOSSES	(\$1,987,910.44)	(\$1,737,978.18)	(\$1,608,624.35)	(\$1,595,265.13)	(\$1,606,238.77)	(\$1,607,514.01)	(\$1,355,302.38)
BALANCING ENERGY	(\$406,886.87)	(\$359,757.43)	(\$343,734.30)	(\$287,303.13)	(\$234,901.47)	(\$110,358.61)	(\$68,850.71)
BALANCING LOSSES	\$163,140.02	\$70,633.09	\$34,069.13	\$81,968.55	\$112,000.56	\$67,277.95	\$46,051.19
BALANCING CONGESTION	\$72,741.33	\$57,176.50	\$30,390.58	\$1,146,279.16	\$154,929.02	\$637,378.12	\$290,468.82
FAILED IMPORT CHARGE	(\$1.24)	(\$17,631.59)	(\$59.32)	(\$2,711.04)	(\$7,660.77)	\$0.00	(\$2,312.21)
	30	31					
DAM ENERGY	\$733,617.51	\$766,790.59					
DAM LOSSES	(\$1,318,173.20)	(\$1,576,328.83)					
BALANCING ENERGY	(\$123,442.37)	(\$77,146.97)					
BALANCING LOSSES	(\$19,694.42)	\$65,728.51					
BALANCING CONGESTION	\$276,692.15	\$140,879.04					
FAILED IMPORT CHARGE	(\$1,093.04)	(\$867.35)					



SETTLEMENTS REPORT  
MAY 2005 CLOSEOUT SETTLEMENT  
JANUARY 5, 2007

CLOSEOUT SETTLEMENT MARKET RESIDUALS ANALYSIS

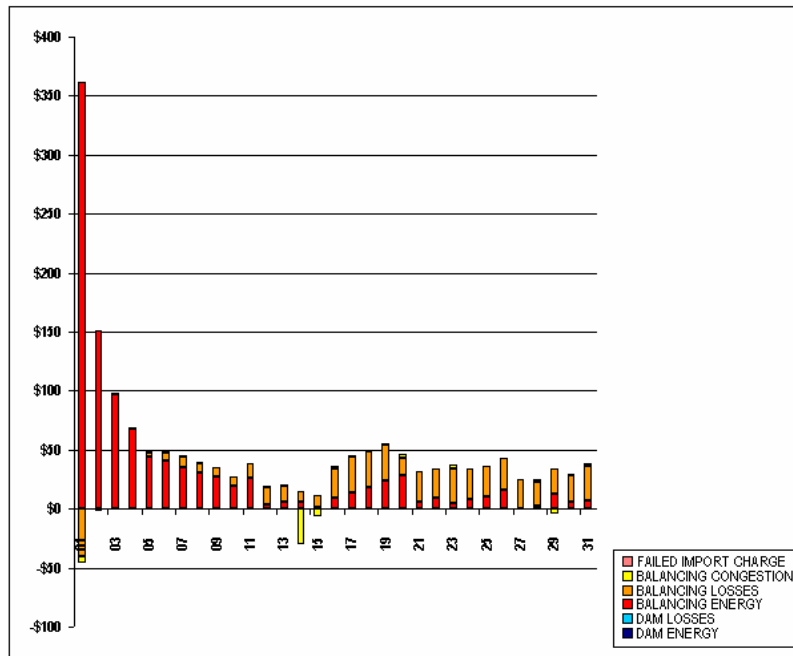
	MONDAY	TUESDAY	WEDNESDAY	THURSDAY	FRIDAY	SATURDAY	SUNDAY
							1
DAM ENERGY							\$776,426.00
DAM LOSSES							(\$1,444,380.68)
BALANCING ENERGY							(\$219,029.85)
BALANCING LOSSES							\$71,959.90
BALANCING CONGESTION							\$194,135.37
FAILED IMPORT CHARGE							(\$41.79)
	2	3	4	5	6	7	8
DAM ENERGY	\$790,522.92	\$773,085.66	\$1,104,741.14	\$931,169.85	\$866,742.65	\$690,665.71	\$883,656.74
DAM LOSSES	(\$1,458,203.72)	(\$1,504,629.24)	(\$1,597,082.62)	(\$1,675,400.64)	(\$1,579,030.06)	(\$1,037,242.29)	(\$1,547,024.94)
BALANCING ENERGY	(\$318,910.52)	(\$278,013.55)	(\$496,100.81)	(\$322,674.06)	(\$395,549.74)	(\$38,805.61)	(\$274,741.22)
BALANCING LOSSES	\$183,264.67	\$152,373.42	\$106,925.99	\$119,714.77	\$78,434.24	(\$118,183.59)	\$115,337.21
BALANCING CONGESTION	\$48,033.67	\$221,471.55	\$195,342.45	\$365,169.28	\$338,636.47	\$29,585.40	\$324,157.68
FAILED IMPORT CHARGE	\$0.00	\$0.00	(\$149.30)	(\$1,516.15)	(\$2,932.87)	(\$1,538.83)	\$0.00
	9	10	11	12	13	14	15
DAM ENERGY	\$879,258.63	\$880,536.03	\$860,995.37	\$893,165.78	\$872,347.18	\$881,458.43	\$862,270.67
DAM LOSSES	(\$1,544,164.55)	(\$1,601,644.27)	(\$1,722,160.42)	(\$1,605,982.66)	(\$1,561,019.22)	(\$1,411,465.48)	(\$1,548,477.78)
BALANCING ENERGY	(\$353,478.92)	(\$336,198.69)	(\$406,065.05)	(\$304,756.04)	(\$362,536.88)	(\$232,162.87)	(\$195,175.69)
BALANCING LOSSES	\$90,208.09	\$114,279.26	\$270,162.81	\$114,817.80	\$75,282.52	\$77,770.57	\$115,337.42
BALANCING CONGESTION	\$202,308.62	\$74,102.33	\$150,711.05	\$145,384.29	\$51,117.83	\$493,111.18	\$1,038,414.04
FAILED IMPORT CHARGE	(\$3,895.81)	(\$1,549.60)	(\$3,117.37)	(\$2,751.01)	(\$1,234.25)	(\$3,905.02)	(\$2,638.19)
	16	17	18	19	20	21	22
DAM ENERGY	\$801,018.63	\$800,871.53	\$846,094.32	\$818,314.34	\$891,759.74	\$1,119,048.06	\$1,213,770.70
DAM LOSSES	(\$1,620,033.69)	(\$1,540,626.75)	(\$1,670,335.67)	(\$1,606,375.19)	(\$1,555,988.43)	(\$1,384,858.37)	(\$1,568,734.41)
BALANCING ENERGY	(\$156,740.49)	(\$167,739.35)	(\$359,679.32)	(\$348,048.57)	(\$174,210.63)	(\$387,773.13)	(\$403,730.42)
BALANCING LOSSES	\$147,080.96	\$77,499.33	\$150,208.01	\$169,701.43	\$58,803.21	(\$12,541.66)	(\$10,334.54)
BALANCING CONGESTION	\$562,153.62	\$431,402.56	\$444,771.58	\$209,954.44	\$1,590,029.72	\$245,677.66	\$190,906.63
FAILED IMPORT CHARGE	(\$3,519.06)	(\$777.14)	(\$399.54)	\$0.00	(\$577.46)	(\$211.32)	(\$565.70)
	23	24	25	26	27	28	29
DAM ENERGY	\$1,175,490.23	\$880,432.56	\$869,686.40	\$887,513.40	\$840,397.08	\$797,897.45	\$688,139.70
DAM LOSSES	(\$1,987,910.44)	(\$1,737,978.18)	(\$1,608,624.35)	(\$1,595,265.13)	(\$1,606,238.77)	(\$1,607,514.01)	(\$1,355,302.38)
BALANCING ENERGY	(\$406,081.78)	(\$359,749.80)	(\$343,724.10)	(\$287,286.61)	(\$234,902.44)	(\$110,356.58)	(\$68,637.72)
BALANCING LOSSES	\$163,169.04	\$70,659.86	\$34,094.75	\$81,994.95	\$112,025.78	\$67,299.00	\$46,072.59
BALANCING CONGESTION	\$72,744.31	\$57,176.50	\$30,390.54	\$1,146,279.08	\$154,929.07	\$537,379.93	\$290,464.56
FAILED IMPORT CHARGE	(\$1.24)	(\$17,631.51)	(\$59.34)	(\$2,711.01)	(\$7,660.76)	\$0.00	(\$2,312.29)
	30	31					
DAM ENERGY	\$733,617.51	\$766,790.59					
DAM LOSSES	(\$1,318,173.20)	(\$1,576,328.83)					
BALANCING ENERGY	(\$123,436.18)	(\$77,139.99)					
BALANCING LOSSES	(\$19,672.28)	\$65,757.87					
BALANCING CONGESTION	\$278,693.74	\$140,880.80					
FAILED IMPORT CHARGE	(\$1,092.97)	(\$667.26)					



SETTLEMENTS REPORT  
MAY 2005 CLOSEOUT SETTLEMENT  
JANUARY 5, 2007

CLOSEOUT SETTLEMENT MARKET RESIDUALS DELTA ANALYSIS

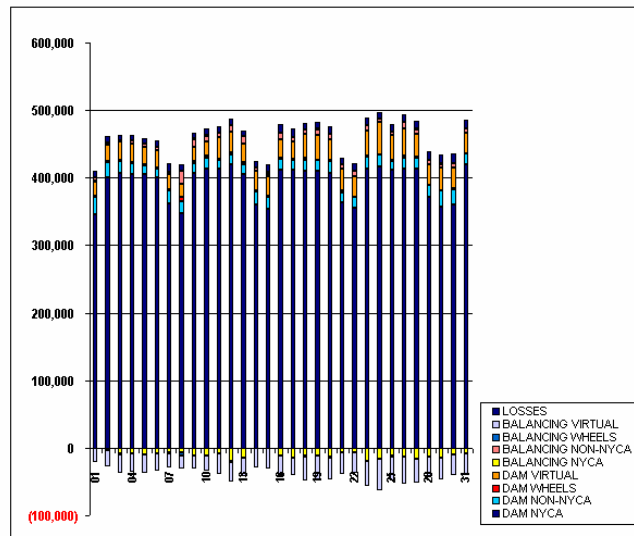
	MONDAY	TUESDAY	WEDNESDAY	THURSDAY	FRIDAY	SATURDAY	SUNDAY
							1
DAM ENERGY							\$0.00
DAM LOSSES							\$0.00
BALANCING ENERGY							\$361.58
BALANCING LOSSES							(\$40.69)
BALANCING CONGESTION							(\$5.65)
FAILED IMPORT CHARGE							\$0.01
	2	3	4	5	6	7	8
DAM ENERGY	\$0.00	\$0.00	\$0.00	\$0.00	\$0.00	\$0.00	\$0.00
DAM LOSSES	\$0.00	\$0.00	\$0.00	\$0.00	\$0.00	\$0.00	\$0.00
BALANCING ENERGY	\$151.15	\$87.24	\$67.63	\$44.47	\$40.75	\$34.76	\$30.38
BALANCING LOSSES	(\$1.51)	\$0.58	\$0.87	\$2.86	\$6.97	\$9.86	\$8.44
BALANCING CONGESTION	\$0.16	\$0.68	\$0.58	\$2.59	\$0.56	\$0.19	\$0.38
FAILED IMPORT CHARGE	\$0.00	\$0.00	\$0.01	\$0.03	\$0.03	(\$0.02)	\$0.00
	9	10	11	12	13	14	15
DAM ENERGY	\$0.00	\$0.00	\$0.00	\$0.00	\$0.00	\$0.00	\$0.00
DAM LOSSES	\$0.00	\$0.00	\$0.00	\$0.00	\$0.00	\$0.00	\$0.00
BALANCING ENERGY	\$26.79	\$19.10	\$26.51	\$3.75	\$5.75	\$5.49	\$1.61
BALANCING LOSSES	\$7.80	\$8.20	\$11.76	\$13.99	\$14.11	\$9.89	\$10.11
BALANCING CONGESTION	\$0.09	\$0.22	\$0.29	\$1.17	\$0.10	(\$29.94)	(\$6.02)
FAILED IMPORT CHARGE	\$0.12	\$0.02	(\$0.03)	(\$0.04)	(\$0.01)	\$0.02	\$0.02
	16	17	18	19	20	21	22
DAM ENERGY	\$0.00	\$0.00	\$0.00	\$0.00	\$0.00	\$0.00	\$0.00
DAM LOSSES	\$0.00	\$0.00	\$0.00	\$0.00	\$0.00	\$0.00	\$0.00
BALANCING ENERGY	\$6.84	\$13.18	\$17.96	\$23.68	\$28.52	\$5.77	\$9.27
BALANCING LOSSES	\$25.70	\$30.92	\$30.65	\$31.12	\$14.79	\$25.59	\$24.73
BALANCING CONGESTION	\$1.42	\$0.75	\$0.95	\$0.30	\$3.30	\$0.43	\$0.04
FAILED IMPORT CHARGE	\$0.06	\$0.02	\$0.00	\$0.00	\$0.01	\$0.01	(\$0.02)
	23	24	25	26	27	28	29
DAM ENERGY	\$0.00	\$0.00	\$0.00	\$0.00	\$0.00	\$0.00	\$0.00
DAM LOSSES	\$0.00	\$0.00	\$0.00	\$0.00	\$0.00	\$0.00	\$0.00
BALANCING ENERGY	\$5.09	\$7.63	\$10.20	\$16.52	(\$0.97)	\$2.03	\$12.99
BALANCING LOSSES	\$29.02	\$26.77	\$25.62	\$26.40	\$25.22	\$21.05	\$21.40
BALANCING CONGESTION	\$2.98	\$0.00	(\$0.04)	(\$0.08)	\$0.05	\$1.81	(\$4.26)
FAILED IMPORT CHARGE	\$0.00	\$0.08	(\$0.02)	\$0.03	\$0.01	\$0.00	(\$0.08)
	30	31					
DAM ENERGY	\$0.00	\$0.00					
DAM LOSSES	\$0.00	\$0.00					
BALANCING ENERGY	\$6.19	\$6.98					
BALANCING LOSSES	\$22.14	\$29.36					
BALANCING CONGESTION	\$1.59	\$1.56					
FAILED IMPORT CHARGE	\$0.07	\$0.09					



SETTLEMENTS REPORT  
MAY 2005 CLOSEOUT SETTLEMENT  
JANUARY 5, 2007

12-MONTH SETTLEMENT ADJUSTMENT MARKET WITHDRAWALS ANALYSIS

	MONDAY	TUESDAY	WEDNESDAY	THURSDAY	FRIDAY	SATURDAY	SUNDAY
							1
DAM NYCA							346,437
DAM NON-NYCA							24,400
DAM WHEELS							2,112
DAM VIRTUAL							20,706
BALANCING NYCA							2,816
BALANCING NON-NYCA							4,240
BALANCING WHEELS							(87)
BALANCING VIRTUAL							(20,705)
UFE/LOSSES							10,371
							2
DAM NYCA	400,829	406,903	405,473	405,823	401,230	362,028	347,888
DAM NON-NYCA	23,039	18,280	15,422	11,739	11,988	19,596	16,719
DAM WHEELS	1,525	1,498	1,612	1,510	1,950	650	6,187
DAM VIRTUAL	23,991	27,198	28,342	26,513	25,120	22,363	20,590
BALANCING NYCA	(2,602)	(8,419)	(7,550)	(9,786)	(7,519)	(6,973)	(7,097)
BALANCING NON-NYCA	3,548	2,940	3,937	4,065	4,734	4,453	18,813
BALANCING WHEELS	(704)	(990)	50	(228)	(677)	(505)	(9,320)
BALANCING VIRTUAL	(23,991)	(27,198)	(28,342)	(26,513)	(25,120)	(22,363)	(20,590)
UFE/LOSSES	8,241	7,086	8,557	8,213	9,527	11,606	9,551
							3
DAM NYCA	406,394	412,802	412,529	419,493	405,197	359,920	353,780
DAM NON-NYCA	15,554	16,826	14,372	15,359	15,180	20,141	17,945
DAM WHEELS	3,162	3,366	1,045	2,765	2,133	1,058	1,425
DAM VIRTUAL	20,007	21,353	31,293	30,190	28,130	29,022	29,656
BALANCING NYCA	(11,501)	(12,078)	(7,567)	(20,051)	(13,871)	363	1,923
BALANCING NON-NYCA	11,412	7,497	7,472	9,860	11,016	3,993	3,995
BALANCING WHEELS	1,195	1,055	407	(441)	(165)	(171)	(660)
BALANCING VIRTUAL	(20,007)	(21,353)	(31,293)	(30,190)	(28,130)	(29,022)	(29,656)
UFE/LOSSES	8,587	9,832	9,400	9,442	8,250	10,179	11,606
							4
DAM NYCA	411,938	412,270	410,296	409,537	407,566	364,238	355,337
DAM NON-NYCA	15,459	13,369	16,594	17,442	16,457	13,694	15,867
DAM WHEELS	1,582	2,335	2,265	0	1,965	2,820	0
DAM VIRTUAL	28,555	25,919	35,181	37,005	31,124	32,587	31,152
BALANCING NYCA	(11,067)	(13,965)	(11,775)	(10,836)	(15,344)	(6,369)	(6,435)
BALANCING NON-NYCA	9,152	6,556	6,839	7,539	7,761	6,396	7,380
BALANCING WHEELS	(137)	(868)	(1,507)	1,025	(1,735)	95	303
BALANCING VIRTUAL	(28,555)	(25,919)	(35,181)	(37,005)	(31,123)	(32,587)	(31,152)
UFE/LOSSES	12,953	12,261	10,375	10,618	10,706	9,896	11,566
							5
DAM NYCA	413,949	415,823	412,526	413,313	412,595	370,644	357,274
DAM NON-NYCA	16,281	17,730	12,023	16,859	16,967	18,054	23,421
DAM WHEELS	2,035	960	2,413	1,701	718	4	1,031
DAM VIRTUAL	37,572	47,277	36,122	40,454	34,974	31,281	33,307
BALANCING NYCA	(18,759)	(16,450)	(11,155)	(13,222)	(16,730)	(12,829)	(14,385)
BALANCING NON-NYCA	8,010	5,715	5,463	10,934	6,786	5,527	5,072
BALANCING WHEELS	2	110	(1,613)	(288)	280	707	477
BALANCING VIRTUAL	(37,572)	(47,277)	(36,122)	(40,454)	(34,974)	(31,281)	(33,307)
UFE/LOSSES	11,295	10,014	10,382	10,674	11,253	13,152	13,735
							6
DAM NYCA	360,639	419,348					
DAM NON-NYCA	22,702	15,910					
DAM WHEELS	854	1,211					
DAM VIRTUAL	30,020	29,823					
BALANCING NYCA	(10,267)	(8,436)					
BALANCING NON-NYCA	6,978	6,200					
BALANCING WHEELS	581	18					
BALANCING VIRTUAL	(30,020)	(29,823)					
UFE/LOSSES	13,323	12,816					

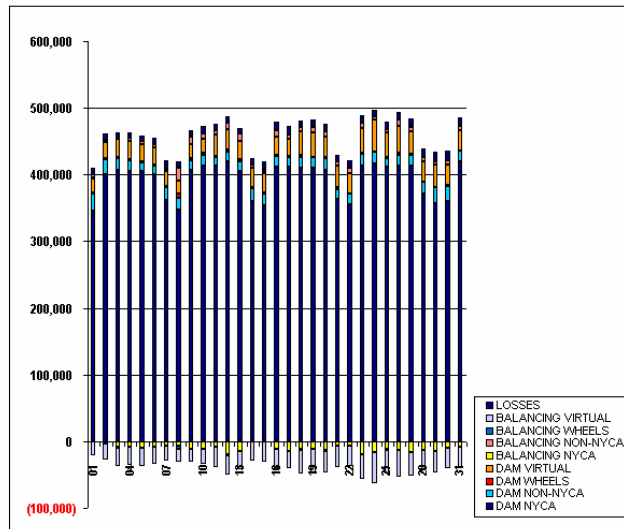


FOR DISCUSSION PURPOSES ONLY

SETTLEMENTS REPORT  
MAY 2005 CLOSEOUT SETTLEMENT  
JANUARY 5, 2007

CLOSEOUT SETTLEMENT MARKET WITHDRAWALS ANALYSIS

	MONDAY	TUESDAY	WEDNESDAY	THURSDAY	FRIDAY	SATURDAY	SUNDAY
							1
DAM NYCA							346,437
DAM NON-NYCA							24,400
DAM WHEELS							2,112
DAM VIRTUAL							20,706
BALANCING NYCA							2,638
BALANCING NON-NYCA							4,240
BALANCING WHEELS							(87)
BALANCING VIRTUAL							(20,705)
UFE/LOSSES							10,379
	2	3	4	5	6	7	8
DAM NYCA	400,629	406,903	405,473	405,823	401,230	362,028	347,888
DAM NON-NYCA	23,039	18,200	15,422	11,739	11,988	19,596	16,719
DAM WHEELS	1,525	1,498	1,612	1,510	1,950	650	6,167
DAM VIRTUAL	23,991	27,198	28,342	26,513	25,120	22,363	20,590
BALANCING NYCA	(2,590)	(8,406)	(7,538)	(9,774)	(7,507)	(6,961)	(7,086)
BALANCING NON-NYCA	3,548	2,040	3,937	4,065	4,734	4,453	18,813
BALANCING WHEELS	(704)	(990)	50	(228)	(677)	(505)	(3,520)
BALANCING VIRTUAL	(23,991)	(27,198)	(28,342)	(26,513)	(25,120)	(22,363)	(20,590)
UFE/LOSSES	9,243	7,086	6,559	6,214	9,528	11,607	9,551
	9	10	11	12	13	14	15
DAM NYCA	406,394	412,802	412,529	419,493	405,197	359,920	353,780
DAM NON-NYCA	15,554	16,826	14,372	15,358	15,180	20,141	17,945
DAM WHEELS	3,162	3,366	1,045	2,765	2,133	1,058	1,425
DAM VIRTUAL	20,007	21,353	31,293	30,190	28,130	29,022	29,656
BALANCING NYCA	(11,489)	(12,067)	(7,555)	(20,039)	(13,959)	375	1,935
BALANCING NON-NYCA	11,412	7,497	7,472	9,860	11,016	3,953	3,995
BALANCING WHEELS	1,195	1,055	407	(441)	(165)	(171)	(660)
BALANCING VIRTUAL	(20,007)	(21,353)	(31,293)	(30,190)	(28,130)	(29,022)	(29,656)
UFE/LOSSES	8,588	9,832	9,400	9,442	8,250	10,179	11,686
	16	17	18	19	20	21	22
DAM NYCA	411,938	412,270	410,296	409,537	407,566	364,238	355,337
DAM NON-NYCA	15,459	13,369	16,594	17,442	16,457	13,694	15,867
DAM WHEELS	1,582	2,335	2,265	0	1,965	2,920	0
DAM VIRTUAL	28,555	25,919	35,181	37,005	31,124	32,587	31,152
BALANCING NYCA	(11,075)	(13,953)	(11,784)	(10,824)	(13,332)	(6,357)	(6,423)
BALANCING NON-NYCA	9,152	6,556	6,839	7,539	7,761	6,396	7,380
BALANCING WHEELS	(137)	(868)	(1,507)	1,025	(1,735)	95	303
BALANCING VIRTUAL	(28,555)	(25,919)	(35,181)	(37,005)	(31,123)	(32,587)	(31,152)
UFE/LOSSES	12,953	12,261	10,575	10,618	10,706	9,896	11,586
	23	24	25	26	27	28	29
DAM NYCA	419,949	415,923	412,526	413,313	412,595	370,844	357,274
DAM NON-NYCA	16,281	17,730	12,023	16,859	16,967	18,054	23,421
DAM WHEELS	2,035	960	2,413	1,701	718	4	1,031
DAM VIRTUAL	37,572	47,277	36,122	40,454	34,974	31,281	33,307
BALANCING NYCA	(18,747)	(16,438)	(11,143)	(13,210)	(16,718)	(12,817)	(14,374)
BALANCING NON-NYCA	8,010	5,715	5,463	10,834	6,786	5,527	5,072
BALANCING WHEELS	2	110	(1,613)	(289)	290	707	477
BALANCING VIRTUAL	(37,572)	(47,277)	(36,122)	(40,454)	(34,974)	(31,281)	(33,307)
UFE/LOSSES	11,295	10,015	10,382	10,674	11,253	13,152	13,735
	30	31					
DAM NYCA	360,639	419,348					
DAM NON-NYCA	22,702	15,910					
DAM WHEELS	854	1,211					
DAM VIRTUAL	30,020	29,923					
BALANCING NYCA	(10,255)	(8,425)					
BALANCING NON-NYCA	6,978	6,200					
BALANCING WHEELS	581	18					
BALANCING VIRTUAL	(30,020)	(29,923)					
UFE/LOSSES	13,324	12,816					



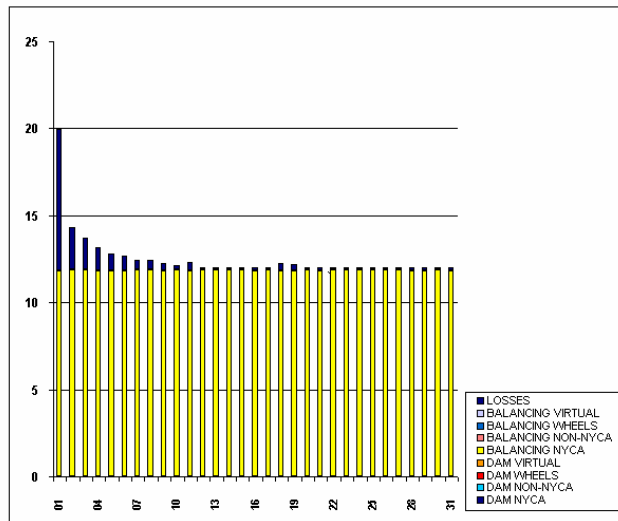
FOR DISCUSSION PURPOSES ONLY



SETTLEMENTS REPORT  
MAY 2005 CLOSEOUT SETTLEMENT  
JANUARY 5, 2007

CLOSEOUT SETTLEMENT MARKET WITHDRAWALS DELTA ANALYSIS

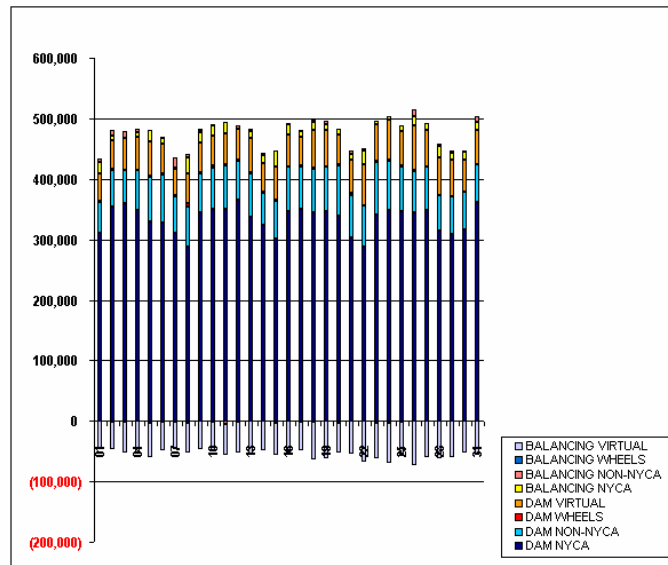
	MONDAY	TUESDAY	WEDNESDAY	THURSDAY	FRIDAY	SATURDAY	SUNDAY
							1
DAM NYCA							0
DAM NON-NYCA							0
DAM WHEELS							0
DAM VIRTUAL							0
BALANCING NYCA							12
BALANCING NON-NYCA							0
BALANCING WHEELS							0
BALANCING VIRTUAL							0
UFE/LOSSES							8
	2	3	4	5	6	7	8
DAM NYCA	0	0	0	0	0	0	0
DAM NON-NYCA	0	0	0	0	0	0	0
DAM WHEELS	0	0	0	0	0	0	0
DAM VIRTUAL	0	0	0	0	0	0	0
BALANCING NYCA	12	12	12	12	12	12	12
BALANCING NON-NYCA	0	0	0	0	0	0	0
BALANCING WHEELS	0	0	0	0	0	0	0
BALANCING VIRTUAL	0	0	0	0	0	0	0
UFE/LOSSES	2	2	1	1	1	1	1
	9	10	11	12	13	14	15
DAM NYCA	0	0	0	0	0	0	0
DAM NON-NYCA	0	0	0	0	0	0	0
DAM WHEELS	0	0	0	0	0	0	0
DAM VIRTUAL	0	0	0	0	0	0	0
BALANCING NYCA	12	12	12	12	12	12	12
BALANCING NON-NYCA	0	0	0	0	0	0	0
BALANCING WHEELS	0	0	0	0	0	0	0
BALANCING VIRTUAL	0	0	0	0	0	0	0
UFE/LOSSES	0	0	0	0	0	0	0
	16	17	18	19	20	21	22
DAM NYCA	0	0	0	0	0	0	0
DAM NON-NYCA	0	0	0	0	0	0	0
DAM WHEELS	0	0	0	0	0	0	0
DAM VIRTUAL	0	0	0	0	0	0	0
BALANCING NYCA	12	12	12	12	12	12	12
BALANCING NON-NYCA	0	0	0	0	0	0	0
BALANCING WHEELS	0	0	0	0	0	0	0
BALANCING VIRTUAL	0	0	0	0	0	0	0
UFE/LOSSES	0	0	0	0	0	0	0
	23	24	25	26	27	28	29
DAM NYCA	0	0	0	0	0	0	0
DAM NON-NYCA	0	0	0	0	0	0	0
DAM WHEELS	0	0	0	0	0	0	0
DAM VIRTUAL	0	0	0	0	0	0	0
BALANCING NYCA	12	12	12	12	12	12	12
BALANCING NON-NYCA	0	0	0	0	0	0	0
BALANCING WHEELS	0	0	0	0	0	0	0
BALANCING VIRTUAL	0	0	0	0	0	0	0
UFE/LOSSES	0	0	0	0	0	0	0
	30	31					
DAM NYCA	0	0					
DAM NON-NYCA	0	0					
DAM WHEELS	0	0					
DAM VIRTUAL	0	0					
BALANCING NYCA	12	12					
BALANCING NON-NYCA	0	0					
BALANCING WHEELS	0	0					
BALANCING VIRTUAL	0	0					
UFE/LOSSES	0	0					



SETTLEMENTS REPORT  
MAY 2005 CLOSEOUT SETTLEMENT  
JANUARY 5, 2007

12-MONTH SETTLEMENT ADJUSTMENT MARKET SUPPLY ANALYSIS

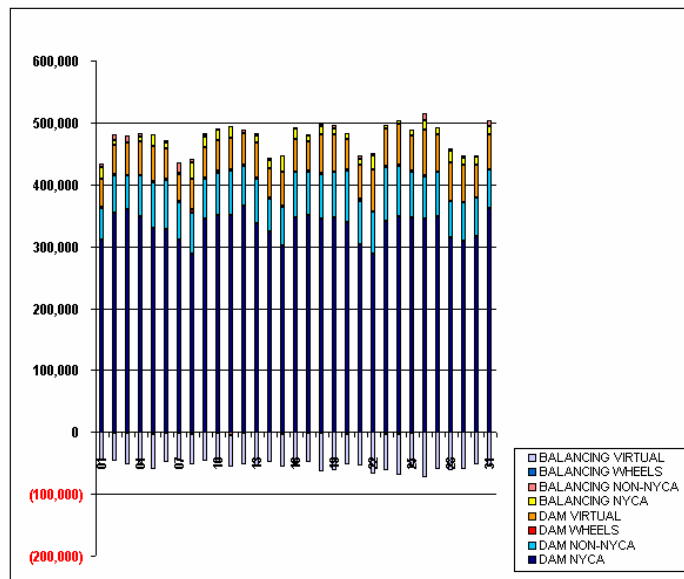
	MONDAY	TUESDAY	WEDNESDAY	THURSDAY	FRIDAY	SATURDAY	SUNDAY
							<b>1</b>
DAM NYCA							310,984
DAM NON-NYCA							51,426
DAM WHEELS							2,112
DAM VIRTUAL							44,200
BALANCING NYCA							19,814
BALANCING NON-NYCA							5,840
BALANCING WHEELS							(87)
BALANCING VIRTUAL							(44,200)
	<b>2</b>	<b>3</b>	<b>4</b>	<b>5</b>	<b>6</b>	<b>7</b>	<b>8</b>
DAM NYCA	353,681	359,340	347,577	329,259	327,072	311,096	287,963
DAM NON-NYCA	61,448	54,486	66,311	73,901	79,753	61,002	65,229
DAM WHEELS	1,525	1,498	1,612	1,510	1,950	650	6,187
DAM VIRTUAL	46,376	51,822	54,743	57,197	46,529	44,233	49,150
BALANCING NYCA	8,795	70	6,231	19,764	11,180	2,147	26,200
BALANCING NON-NYCA	8,930	11,995	5,720	(2,869)	1,956	16,465	6,481
BALANCING WHEELS	(704)	(990)	50	(228)	(677)	(505)	(3,920)
BALANCING VIRTUAL	(46,376)	(51,822)	(54,743)	(57,197)	(46,529)	(44,233)	(49,150)
	<b>9</b>	<b>10</b>	<b>11</b>	<b>12</b>	<b>13</b>	<b>14</b>	<b>15</b>
DAM NYCA	345,009	350,128	350,180	365,233	336,345	323,004	300,450
DAM NON-NYCA	63,618	68,245	72,292	64,455	72,662	54,562	63,552
DAM WHEELS	3,162	3,366	1,045	2,765	2,133	1,058	1,425
DAM VIRTUAL	47,689	49,621	51,881	49,708	55,544	47,914	54,217
BALANCING NYCA	18,414	18,510	18,448	(1,457)	12,241	11,764	27,622
BALANCING NON-NYCA	3,395	(2,006)	(4,693)	6,171	4,393	5,266	(2,299)
BALANCING WHEELS	1,195	1,055	407	(441)	(165)	(171)	(660)
BALANCING VIRTUAL	(47,689)	(49,621)	(51,881)	(49,708)	(55,544)	(47,914)	(54,217)
	<b>16</b>	<b>17</b>	<b>18</b>	<b>19</b>	<b>20</b>	<b>21</b>	<b>22</b>
DAM NYCA	347,480	349,886	345,482	346,366	339,751	302,487	287,687
DAM NON-NYCA	71,972	69,503	70,122	73,236	82,103	70,495	68,324
DAM WHEELS	1,582	2,335	2,265	0	1,965	2,920	0
DAM VIRTUAL	52,677	49,109	63,207	61,151	49,335	55,309	67,310
BALANCING NYCA	17,308	9,812	13,522	8,990	9,462	9,777	22,641
BALANCING NON-NYCA	1,905	1,690	3,192	6,059	(1,371)	5,095	5,063
BALANCING WHEELS	(137)	(868)	(1,507)	1,025	(1,735)	95	303
BALANCING VIRTUAL	(52,677)	(49,109)	(63,207)	(61,151)	(49,335)	(55,309)	(67,310)
	<b>23</b>	<b>24</b>	<b>25</b>	<b>26</b>	<b>27</b>	<b>28</b>	<b>29</b>
DAM NYCA	341,593	348,165	347,294	345,430	347,976	315,077	309,641
DAM NON-NYCA	86,978	82,364	73,400	67,602	71,701	58,452	61,427
DAM WHEELS	2,035	960	2,413	1,701	718	4	1,031
DAM VIRTUAL	59,762	67,064	56,888	73,673	60,442	62,596	59,392
BALANCING NYCA	5,731	5,094	8,638	15,092	11,072	18,924	10,625
BALANCING NON-NYCA	(3,526)	(2,691)	117	10,602	122	2,296	3,424
BALANCING WHEELS	2	110	(1,813)	(298)	290	707	477
BALANCING VIRTUAL	(59,762)	(67,064)	(56,888)	(73,673)	(60,442)	(62,596)	(59,392)
	<b>30</b>	<b>31</b>					
DAM NYCA	316,504	361,392					
DAM NON-NYCA	61,476	61,932					
DAM WHEELS	854	1,211					
DAM VIRTUAL	52,292	56,532					
BALANCING NYCA	13,319	12,454					
BALANCING NON-NYCA	2,076	10,011					
BALANCING WHEELS	581	18					
BALANCING VIRTUAL	(52,292)	(56,532)					



SETTLEMENTS REPORT  
MAY 2005 CLOSEOUT SETTLEMENT  
JANUARY 5, 2007

CLOSEOUT SETTLEMENT MARKET SUPPLY ANALYSIS

	MONDAY	TUESDAY	WEDNESDAY	THURSDAY	FRIDAY	SATURDAY	SUNDAY
							<b>1</b>
DAM NYCA							310,984
DAM NON-NYCA							51,426
DAM WHEELS							2,112
DAM VIRTUAL							44,200
BALANCING NYCA							19,834
BALANCING NON-NYCA							5,840
BALANCING WHEELS							(87)
BALANCING VIRTUAL							(44,200)
	<b>2</b>	<b>3</b>	<b>4</b>	<b>5</b>	<b>6</b>	<b>7</b>	<b>8</b>
DAM NYCA	353,681	359,340	347,577	329,259	327,072	311,096	287,963
DAM NON-NYCA	61,448	54,486	66,311	73,901	79,753	61,002	65,229
DAM WHEELS	1,525	1,498	1,612	1,510	1,950	650	6,187
DAM VIRTUAL	46,376	51,822	54,743	57,197	46,529	44,233	48,150
BALANCING NYCA	8,809	84	6,244	19,776	11,193	2,153	26,213
BALANCING NON-NYCA	8,930	11,995	5,720	(2,869)	1,956	16,465	6,481
BALANCING WHEELS	(704)	(990)	50	(229)	(677)	(505)	(3,920)
BALANCING VIRTUAL	(46,376)	(51,822)	(54,743)	(57,197)	(46,529)	(44,233)	(48,150)
	<b>9</b>	<b>10</b>	<b>11</b>	<b>12</b>	<b>13</b>	<b>14</b>	<b>15</b>
DAM NYCA	345,009	350,128	350,160	365,233	336,345	323,004	300,450
DAM NON-NYCA	63,618	68,245	72,292	64,455	72,662	54,562	63,552
DAM WHEELS	3,162	3,366	1,045	2,765	2,133	1,058	1,425
DAM VIRTUAL	47,689	48,821	51,881	49,708	55,544	47,914	54,217
BALANCING NYCA	18,426	18,523	18,460	(1,445)	12,253	11,776	27,634
BALANCING NON-NYCA	3,395	(2,006)	(4,693)	6,171	4,393	5,266	(2,299)
BALANCING WHEELS	1,195	1,055	407	(441)	(165)	(171)	(660)
BALANCING VIRTUAL	(47,689)	(48,821)	(51,881)	(49,708)	(55,544)	(47,914)	(54,217)
	<b>16</b>	<b>17</b>	<b>18</b>	<b>19</b>	<b>20</b>	<b>21</b>	<b>22</b>
DAM NYCA	347,480	349,886	345,492	346,366	339,751	302,487	287,687
DAM NON-NYCA	71,972	69,503	70,122	73,236	62,103	70,495	66,324
DAM WHEELS	1,582	2,335	2,265	0	1,965	2,920	0
DAM VIRTUAL	52,677	48,109	63,207	61,151	49,335	55,309	67,310
BALANCING NYCA	17,320	9,824	13,534	9,002	9,474	9,789	22,653
BALANCING NON-NYCA	1,905	1,690	3,192	6,059	(1,971)	5,095	5,063
BALANCING WHEELS	(137)	(868)	(1,507)	1,025	(1,735)	95	303
BALANCING VIRTUAL	(52,677)	(48,109)	(63,207)	(61,151)	(49,335)	(55,309)	(67,310)
	<b>23</b>	<b>24</b>	<b>25</b>	<b>26</b>	<b>27</b>	<b>28</b>	<b>29</b>
DAM NYCA	341,593	348,165	347,294	345,430	347,976	315,077	309,641
DAM NON-NYCA	86,978	82,364	73,400	67,602	71,701	58,452	61,427
DAM WHEELS	2,035	960	2,413	1,701	718	4	1,031
DAM VIRTUAL	58,762	67,064	56,688	73,673	60,442	62,596	59,392
BALANCING NYCA	5,743	5,106	8,650	15,104	11,084	18,936	10,637
BALANCING NON-NYCA	(3,526)	(2,691)	117	10,602	122	2,296	3,424
BALANCING WHEELS	2	110	(1,613)	(298)	290	707	477
BALANCING VIRTUAL	(58,762)	(67,064)	(56,688)	(73,673)	(60,442)	(62,596)	(59,392)
	<b>30</b>	<b>31</b>					
DAM NYCA	316,504	361,392					
DAM NON-NYCA	61,476	61,932					
DAM WHEELS	854	1,211					
DAM VIRTUAL	52,292	56,532					
BALANCING NYCA	13,331	12,466					
BALANCING NON-NYCA	2,076	10,011					
BALANCING WHEELS	581	18					
BALANCING VIRTUAL	(52,292)	(56,532)					



SETTLEMENTS REPORT  
MAY 2005 CLOSEOUT SETTLEMENT  
JANUARY 5, 2007

CLOSEOUT SETTLEMENT MARKET SUPPLY DELTA ANALYSIS

	MONDAY	TUESDAY	WEDNESDAY	THURSDAY	FRIDAY	SATURDAY	SUNDAY
							<b>1</b>
DAM NYCA							0
DAM NON-NYCA							0
DAM WHEELS							0
DAM VIRTUAL							0
BALANCING NYCA							20
BALANCING NON-NYCA							0
BALANCING WHEELS							0
BALANCING VIRTUAL							0
	<b>2</b>	<b>3</b>	<b>4</b>	<b>5</b>	<b>6</b>	<b>7</b>	<b>8</b>
DAM NYCA	0	0	0	0	0	0	0
DAM NON-NYCA	0	0	0	0	0	0	0
DAM WHEELS	0	0	0	0	0	0	0
DAM VIRTUAL	0	0	0	0	0	0	0
BALANCING NYCA	14	14	13	13	13	12	12
BALANCING NON-NYCA	0	0	0	0	0	0	0
BALANCING WHEELS	0	0	0	0	0	0	0
BALANCING VIRTUAL	0	0	0	0	0	0	0
	<b>9</b>	<b>10</b>	<b>11</b>	<b>12</b>	<b>13</b>	<b>14</b>	<b>15</b>
DAM NYCA	0	0	0	0	0	0	0
DAM NON-NYCA	0	0	0	0	0	0	0
DAM WHEELS	0	0	0	0	0	0	0
DAM VIRTUAL	0	0	0	0	0	0	0
BALANCING NYCA	12	12	12	12	12	12	12
BALANCING NON-NYCA	0	0	0	0	0	0	0
BALANCING WHEELS	0	0	0	0	0	0	0
BALANCING VIRTUAL	0	0	0	0	0	0	0
	<b>16</b>	<b>17</b>	<b>18</b>	<b>19</b>	<b>20</b>	<b>21</b>	<b>22</b>
DAM NYCA	0	0	0	0	0	0	0
DAM NON-NYCA	0	0	0	0	0	0	0
DAM WHEELS	0	0	0	0	0	0	0
DAM VIRTUAL	0	0	0	0	0	0	0
BALANCING NYCA	12	12	12	12	12	12	12
BALANCING NON-NYCA	0	0	0	0	0	0	0
BALANCING WHEELS	0	0	0	0	0	0	0
BALANCING VIRTUAL	0	0	0	0	0	0	0
	<b>23</b>	<b>24</b>	<b>25</b>	<b>26</b>	<b>27</b>	<b>28</b>	<b>29</b>
DAM NYCA	0	0	0	0	0	0	0
DAM NON-NYCA	0	0	0	0	0	0	0
DAM WHEELS	0	0	0	0	0	0	0
DAM VIRTUAL	0	0	0	0	0	0	0
BALANCING NYCA	12	12	12	12	12	12	12
BALANCING NON-NYCA	0	0	0	0	0	0	0
BALANCING WHEELS	0	0	0	0	0	0	0
BALANCING VIRTUAL	0	0	0	0	0	0	0
	<b>30</b>	<b>31</b>					
DAM NYCA	0	0					
DAM NON-NYCA	0	0					
DAM WHEELS	0	0					
DAM VIRTUAL	0	0					
BALANCING NYCA	12	12					
BALANCING NON-NYCA	0	0					
BALANCING WHEELS	0	0					
BALANCING VIRTUAL	0	0					

