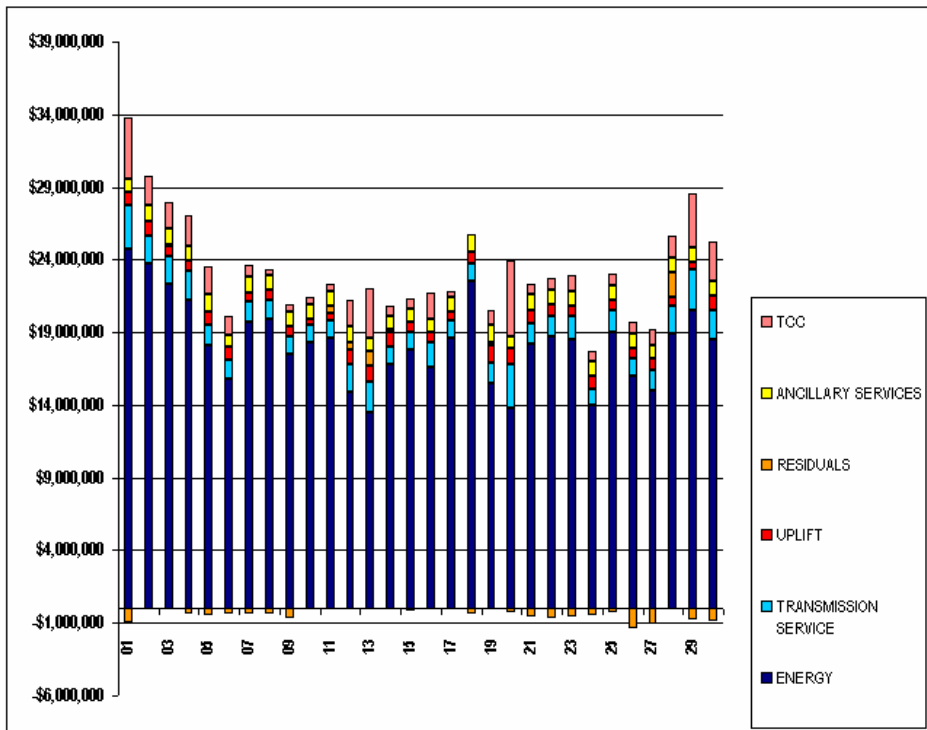


SETTLEMENTS REPORT  
 NOVEMBER 2005 SETTLEMENT ADJUSTMENT  
 DECEMBER 07, 2006

4-MONTH SETTLEMENT ADJUSTMENT MARKET COSTS ANALYSIS

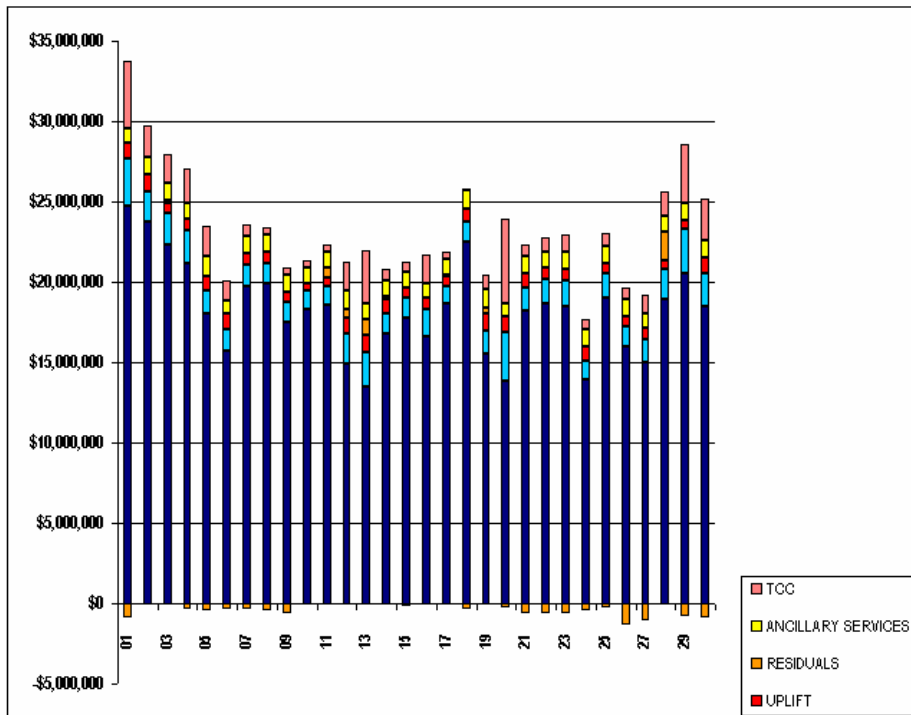
	MONDAY	TUESDAY	WEDNESDAY	THURSDAY	FRIDAY	SATURDAY	SUNDAY
		1	2	3	4	5	6
ENERGY		\$24,726,276.41	\$23,770,150.84	\$22,353,459.95	\$21,191,934.69	\$18,056,939.56	\$15,752,858.13
TRANSMISSION SERVICE		\$2,994,982.93	\$1,824,975.52	\$1,909,479.11	\$2,045,841.28	\$1,450,142.98	\$1,332,091.46
UPLIFT		\$895,981.65	\$1,078,050.04	\$674,418.07	\$678,488.05	\$861,719.60	\$930,009.30
RESIDUALS		(\$931,418.70)	(\$22,835.96)	\$135,471.20	(\$368,074.99)	(\$445,922.52)	(\$329,966.27)
ANCILLARY SERVICES		\$976,035.29	\$1,083,530.77	\$1,075,544.50	\$1,032,230.87	\$1,209,711.89	\$844,908.06
TCC		\$4,209,632.66	\$2,047,830.77	\$1,780,887.40	\$2,123,325.25	\$1,925,026.23	\$1,214,221.92
	7	8	9	10	11	12	13
ENERGY	\$19,724,731.17	\$19,933,917.58	\$17,503,924.97	\$18,292,116.60	\$18,572,079.29	\$14,925,370.52	\$13,516,760.90
TRANSMISSION SERVICE	\$1,360,797.73	\$1,269,863.08	\$1,221,795.16	\$1,181,774.73	\$1,201,465.29	\$1,895,579.53	\$2,113,520.43
UPLIFT	\$686,670.03	\$708,414.20	\$661,037.87	\$462,282.19	\$532,296.20	\$959,494.65	\$1,099,623.79
RESIDUALS	(\$393,705.47)	(\$417,869.68)	(\$652,851.54)	\$17,187.60	\$643,418.33	\$635,705.95	\$931,400.97
ANCILLARY SERVICES	\$1,074,643.05	\$1,009,092.30	\$1,035,307.27	\$927,862.18	\$1,019,780.92	\$1,123,587.59	\$975,683.01
TCC	\$740,709.32	\$440,963.39	\$486,042.76	\$501,106.51	\$468,953.66	\$1,804,022.67	\$3,356,628.00
	14	15	16	17	18	19	20
ENERGY	\$16,784,164.43	\$17,757,398.76	\$16,613,787.18	\$18,634,496.83	\$22,543,322.24	\$15,503,582.91	\$13,829,792.28
TRANSMISSION SERVICE	\$1,249,162.34	\$1,248,782.51	\$1,718,891.16	\$1,140,758.56	\$1,183,830.41	\$1,424,625.30	\$3,010,650.07
UPLIFT	\$941,872.31	\$670,502.46	\$687,811.68	\$594,624.74	\$828,620.93	\$1,142,650.42	\$1,026,929.23
RESIDUALS	\$193,020.56	(\$164,215.89)	(\$94,674.41)	\$78,967.04	(\$347,487.31)	\$286,000.04	(\$242,401.32)
ANCILLARY SERVICES	\$951,601.59	\$965,896.71	\$921,915.66	\$1,022,072.88	\$1,155,898.86	\$1,178,047.39	\$827,771.64
TCC	\$713,621.59	\$635,763.90	\$1,755,391.94	\$402,679.59	\$48,953.78	\$939,600.96	\$5,213,172.27
	21	22	23	24	25	26	27
ENERGY	\$18,205,810.37	\$18,692,527.07	\$18,504,766.55	\$13,958,722.45	\$19,014,333.32	\$16,021,513.28	\$14,984,523.92
TRANSMISSION SERVICE	\$1,419,275.24	\$1,457,908.07	\$1,577,283.71	\$1,110,033.60	\$1,480,619.85	\$1,228,054.75	\$1,409,660.37
UPLIFT	\$933,735.02	\$720,107.83	\$712,820.73	\$931,963.82	\$683,124.88	\$630,049.40	\$780,862.54
RESIDUALS	(\$597,360.95)	(\$664,160.91)	(\$612,918.19)	(\$462,663.13)	(\$230,864.49)	(\$1,361,788.78)	(\$1,070,567.70)
ANCILLARY SERVICES	\$1,069,087.99	\$1,027,364.43	\$1,050,898.95	\$1,009,396.89	\$1,076,452.13	\$1,025,098.16	\$893,325.55
TCC	\$727,580.46	\$841,857.37	\$1,095,533.41	\$711,230.63	\$824,349.17	\$768,736.25	\$1,166,018.09
	28	29	30				
ENERGY	\$18,913,655.29	\$20,559,589.45	\$18,472,329.43				
TRANSMISSION SERVICE	\$1,880,305.94	\$2,720,626.66	\$2,088,968.32				
UPLIFT	\$568,818.14	\$601,447.87	\$980,710.80				
RESIDUALS	\$1,732,918.38	(\$814,182.89)	(\$876,103.85)				
ANCILLARY SERVICES	\$1,027,709.42	\$999,248.98	\$1,014,671.15				
TCC	\$1,474,322.38	\$3,697,824.78	\$2,673,600.21				



SETTLEMENTS REPORT  
 NOVEMBER 2005 SETTLEMENT ADJUSTMENT  
 DECEMBER 07, 2006

12-MONTH SETTLEMENT ADJUSTMENT MARKET COSTS ANALYSIS

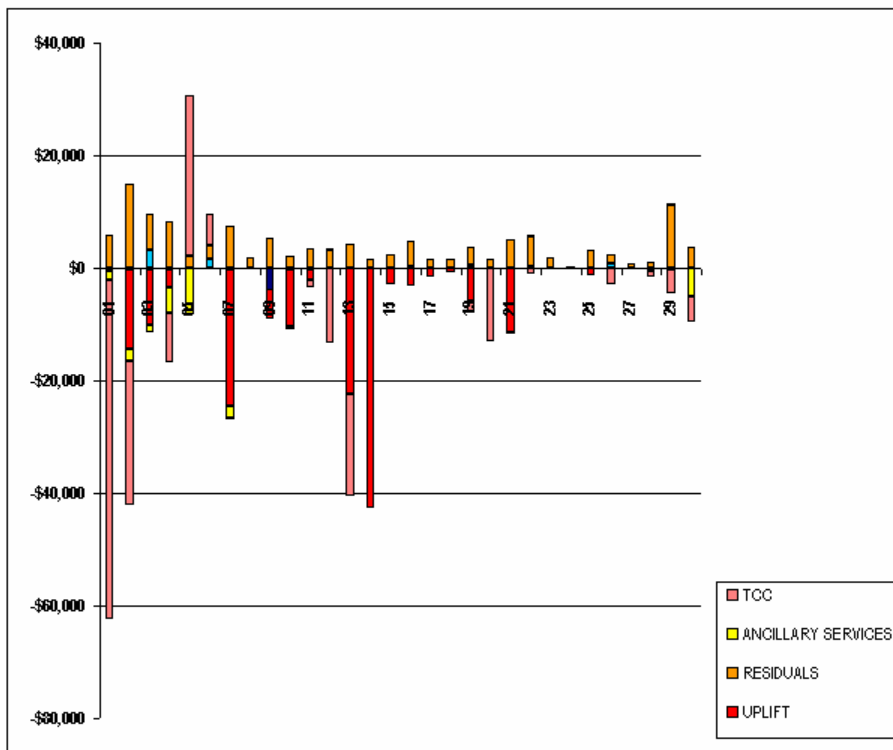
	MONDAY	TUESDAY	WEDNESDAY	THURSDAY	FRIDAY	SATURDAY	SUNDAY
		1	2	3	4	5	6
ENERGY		\$24,726,143.78	\$23,770,037.82	\$22,353,277.25	\$21,191,706.39	\$18,056,808.95	\$15,752,745.90
TRANSMISSION SERVICE		\$2,994,688.31	\$1,824,785.56	\$1,912,549.08	\$2,045,886.84	\$1,450,219.80	\$1,333,680.90
UPLIFT		\$895,981.61	\$1,063,903.50	\$664,539.37	\$675,352.95	\$861,719.62	\$930,009.25
RESIDUALS		(\$925,678.57)	(\$7,923.83)	\$142,010.72	(\$359,892.83)	(\$443,957.76)	(\$327,663.75)
ANCILLARY SERVICES		\$874,385.47	\$1,081,395.43	\$1,074,180.93	\$1,027,594.25	\$1,201,526.10	\$644,892.61
TCC		\$4,149,272.48	\$2,022,312.01	\$1,780,985.98	\$2,114,445.77	\$1,953,689.51	\$1,220,048.54
		7	8	9	10	11	12
ENERGY	\$19,724,574.28	\$19,933,796.89	\$17,500,076.71	\$18,291,980.51	\$18,571,942.12	\$14,925,257.75	\$13,516,663.80
TRANSMISSION SERVICE	\$1,360,793.80	\$1,269,867.26	\$1,221,779.52	\$1,181,786.92	\$1,201,461.26	\$1,895,606.92	\$2,113,537.05
UPLIFT	\$662,238.91	\$708,414.19	\$655,779.56	\$451,947.21	\$530,180.42	\$959,494.67	\$1,077,302.97
RESIDUALS	(\$366,117.18)	(\$416,105.60)	(\$647,632.86)	\$19,423.93	\$546,897.64	\$539,007.45	\$935,613.67
ANCILLARY SERVICES	\$1,072,533.50	\$1,009,099.53	\$1,035,266.84	\$927,877.04	\$1,019,821.40	\$1,123,667.43	\$975,725.16
TCC	\$740,354.67	\$440,755.12	\$486,042.76	\$600,527.64	\$467,725.71	\$1,790,929.93	\$3,338,592.10
		14	15	16	17	18	19
ENERGY	\$16,784,134.84	\$17,757,391.85	\$16,613,949.99	\$18,634,403.02	\$22,543,230.95	\$15,503,494.39	\$13,829,721.95
TRANSMISSION SERVICE	\$1,249,168.79	\$1,248,791.13	\$1,718,890.74	\$1,140,765.02	\$1,183,839.05	\$1,425,244.18	\$3,010,691.17
UPLIFT	\$899,175.94	\$667,498.69	\$684,547.96	\$593,005.01	\$827,813.52	\$1,136,814.20	\$1,026,929.23
RESIDUALS	\$194,717.17	(\$161,808.87)	(\$80,168.36)	\$80,666.85	(\$346,015.08)	\$289,194.91	(\$240,941.61)
ANCILLARY SERVICES	\$951,618.01	\$965,918.79	\$921,914.47	\$1,022,089.21	\$1,155,920.78	\$1,178,092.97	\$827,876.66
TCC	\$713,621.59	\$635,763.90	\$1,755,391.94	\$402,679.59	\$46,953.78	\$937,495.46	\$5,200,255.22
		21	22	23	24	25	27
ENERGY	\$18,205,788.42	\$18,692,518.75	\$18,504,760.50	\$13,958,716.66	\$19,014,325.85	\$16,021,547.65	\$14,984,519.80
TRANSMISSION SERVICE	\$1,419,293.16	\$1,458,218.30	\$1,577,298.23	\$1,110,036.53	\$1,480,622.48	\$1,228,720.17	\$1,409,680.47
UPLIFT	\$922,327.33	\$720,107.83	\$712,820.74	\$932,024.08	\$681,764.71	\$630,049.40	\$780,882.54
RESIDUALS	(\$592,388.47)	(\$658,743.46)	(\$611,195.49)	(\$462,512.02)	(\$227,558.25)	(\$1,360,122.99)	(\$1,069,724.77)
ANCILLARY SERVICES	\$1,069,124.02	\$1,027,421.71	\$1,050,936.14	\$1,009,405.20	\$1,076,460.29	\$1,025,126.89	\$893,377.01
TCC	\$727,333.23	\$840,769.04	\$1,095,533.41	\$711,230.63	\$824,272.83	\$765,751.93	\$1,166,018.09
		26	29	30			
ENERGY	\$18,913,590.07	\$20,559,507.59	\$18,472,348.13				
TRANSMISSION SERVICE	\$1,879,761.21	\$2,720,640.05	\$2,088,969.32				
UPLIFT	\$588,818.20	\$601,248.75	\$980,710.87				
RESIDUALS	\$1,733,883.73	(\$802,897.00)	(\$872,499.34)				
ANCILLARY SERVICES	\$1,027,724.32	\$999,283.06	\$1,009,673.62				
TCC	\$1,473,451.84	\$3,693,620.23	\$2,668,930.31				



SETTLEMENTS REPORT  
 NOVEMBER 2005 SETTLEMENT ADJUSTMENT  
 DECEMBER 07, 2006

SETTLEMENT ADJUSTMENT MARKET COSTS DELTA ANALYSIS

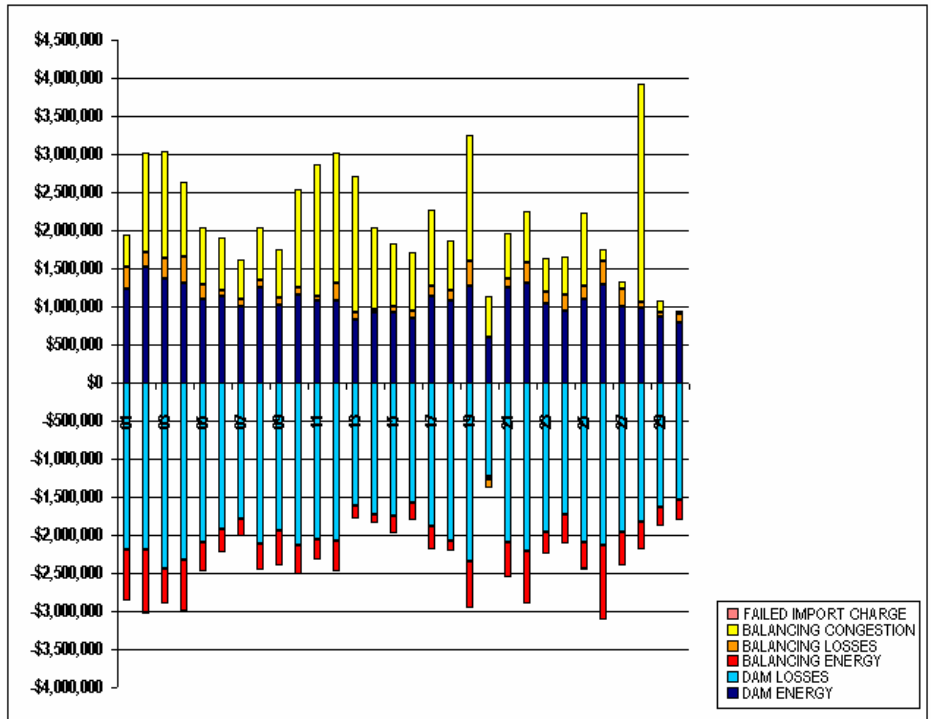
	MONDAY	TUESDAY	WEDNESDAY	THURSDAY	FRIDAY	SATURDAY	SUNDAY
		1	2	3	4	5	6
ENERGY		(\$132.63)	(\$113.02)	(\$182.70)	(\$228.30)	(\$130.61)	(\$112.23)
TRANSMISSION SERVICE		(\$294.62)	(\$189.96)	\$3,069.97	\$45.56	\$76.82	\$1,589.44
UPLIFT		(\$0.04)	(\$14,146.54)	(\$9,878.70)	(\$3,135.10)	\$0.02	(\$0.05)
RESIDUALS		\$5,740.13	\$14,912.13	\$6,539.52	\$6,182.16	\$1,964.76	\$2,302.52
ANCILLARY SERVICES		(\$1,649.82)	(\$2,135.34)	(\$1,363.57)	(\$4,636.62)	(\$8,185.79)	(\$15.45)
TCC		(\$60,360.18)	(\$25,518.76)	\$98.58	(\$8,879.48)	\$28,663.28	\$5,826.62
	7	8	9	10	11	12	13
ENERGY	(\$156.89)	(\$120.69)	(\$3,848.26)	(\$136.09)	(\$137.17)	(\$112.77)	(\$87.10)
TRANSMISSION SERVICE	(\$3.93)	\$4.18	(\$15.64)	\$12.19	\$15.97	\$27.39	\$16.62
UPLIFT	(\$24,431.12)	(\$0.01)	(\$5,258.31)	(\$10,334.98)	(\$2,115.78)	\$0.02	(\$22,320.82)
RESIDUALS	\$7,588.29	\$1,764.08	\$5,218.68	\$2,236.33	\$3,479.31	\$3,301.50	\$4,212.70
ANCILLARY SERVICES	(\$2,109.55)	\$7.23	(\$40.43)	\$14.86	\$40.48	\$79.84	\$42.15
TCC	(\$354.65)	(\$208.27)	\$0.00	(\$578.87)	(\$1,227.95)	(\$13,092.74)	(\$18,035.90)
	14	15	16	17	18	19	20
ENERGY	(\$29.59)	(\$6.91)	\$162.81	(\$93.81)	(\$91.29)	(\$88.52)	(\$70.33)
TRANSMISSION SERVICE	\$6.45	\$8.62	(\$0.42)	\$6.46	\$8.64	\$618.88	\$41.10
UPLIFT	(\$42,696.37)	(\$3,003.79)	(\$3,263.72)	(\$1,619.73)	(\$807.41)	(\$5,836.22)	\$0.00
RESIDUALS	\$1,696.61	\$2,407.02	\$4,508.05	\$1,699.81	\$1,472.23	\$3,194.87	\$1,459.71
ANCILLARY SERVICES	\$16.42	\$22.08	(\$1.19)	\$16.33	\$21.92	\$45.58	\$105.02
TCC	\$0.00	\$0.00	\$0.00	\$0.00	\$0.00	(\$2,105.48)	(\$12,917.05)
	21	22	23	24	25	26	27
ENERGY	(\$21.95)	(\$8.32)	(\$6.05)	(\$5.79)	(\$7.47)	\$34.37	(\$4.12)
TRANSMISSION SERVICE	\$17.92	\$310.23	\$14.52	\$2.93	\$2.63	\$665.42	\$20.10
UPLIFT	(\$11,407.69)	\$0.00	\$0.01	\$60.26	(\$1,360.17)	\$0.00	\$0.00
RESIDUALS	\$4,972.48	\$5,417.45	\$1,722.70	\$151.11	\$3,306.24	\$1,665.79	\$642.93
ANCILLARY SERVICES	\$36.03	\$57.28	\$37.19	\$8.31	\$8.16	\$28.73	\$51.46
TCC	(\$247.23)	(\$1,088.33)	\$0.00	\$0.00	(\$76.34)	(\$2,984.32)	\$0.00
	28	29	30				
ENERGY	(\$65.22)	(\$81.86)	\$18.70				
TRANSMISSION SERVICE	(\$544.73)	\$13.39	\$1.00				
UPLIFT	\$0.06	(\$199.12)	\$0.07				
RESIDUALS	\$965.35	\$11,285.89	\$3,604.51				
ANCILLARY SERVICES	\$14.90	\$34.10	(\$4,997.53)				
TCC	(\$870.54)	(\$4,204.55)	(\$4,669.90)				



SETTLEMENTS REPORT  
 NOVEMBER 2005 SETTLEMENT ADJUSTMENT  
 DECEMBER 07, 2006

4-MONTH SETTLEMENT ADJUSTMENT MARKET RESIDUALS ANALYSIS

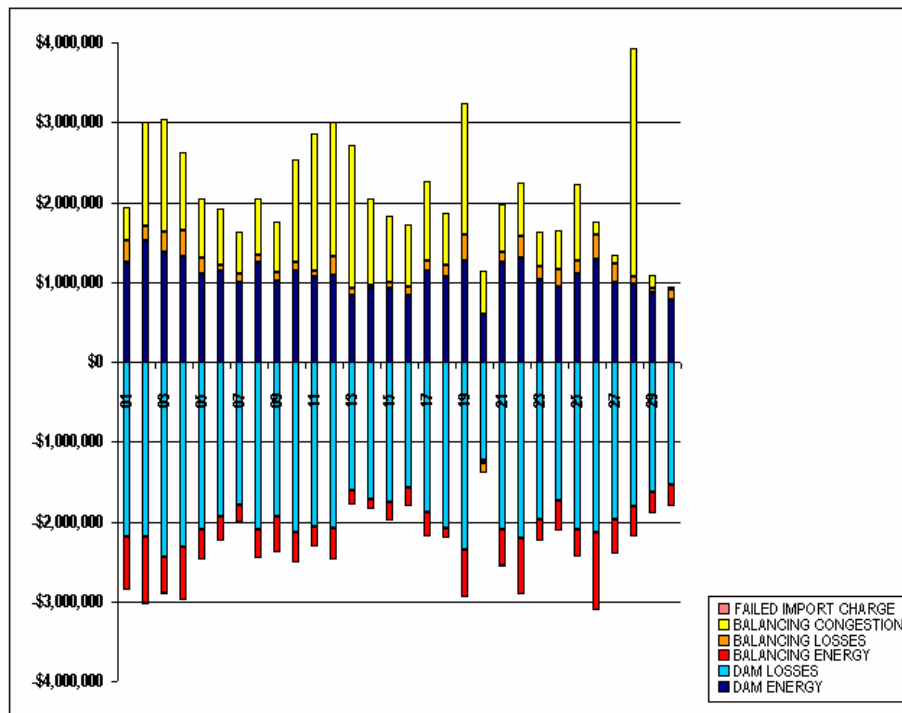
	MONDAY	TUESDAY	WEDNESDAY	THURSDAY	FRIDAY	SATURDAY	SUNDAY
		1	2	3	4	5	6
DAM ENERGY		\$1,239,942.18	\$1,514,861.50	\$1,367,811.33	\$1,312,342.40	\$1,101,078.95	\$1,135,920.99
DAM LOSSES		(\$2,188,886.59)	(\$2,192,070.48)	(\$2,442,715.01)	(\$2,319,761.74)	(\$2,093,052.26)	(\$1,931,198.08)
BALANCING ENERGY		(\$668,647.88)	(\$835,661.32)	(\$453,708.29)	(\$675,157.83)	(\$394,235.58)	(\$309,121.94)
BALANCING LOSSES		\$277,739.47	\$190,819.62	\$269,572.03	\$340,240.69	\$196,739.14	\$69,591.14
BALANCING CONGESTION		\$418,853.05	\$1,307,303.90	\$1,404,829.64	\$974,720.63	\$743,547.23	\$704,870.64
FAILED IMPORT CHARGE		(\$10,418.93)	(\$7,889.18)	(\$10,318.50)	(\$439.14)	\$0.00	(\$29.02)
	7	8	9	10	11	12	13
DAM ENERGY	\$893,954.02	\$1,242,403.17	\$1,015,061.28	\$1,148,468.20	\$1,072,283.54	\$1,077,613.88	\$831,428.05
DAM LOSSES	(\$1,789,480.54)	(\$2,105,991.21)	(\$1,936,940.63)	(\$2,139,469.50)	(\$2,062,667.35)	(\$2,084,602.37)	(\$1,606,001.75)
BALANCING ENERGY	(\$226,522.77)	(\$354,880.82)	(\$463,298.82)	(\$384,452.31)	(\$256,864.67)	(\$389,007.04)	(\$179,403.11)
BALANCING LOSSES	\$107,957.52	\$100,562.73	\$107,396.55	\$99,099.60	\$67,785.42	\$234,637.90	\$87,536.84
BALANCING CONGESTION	\$522,127.68	\$700,758.75	\$624,981.62	\$1,293,881.51	\$1,723,581.42	\$1,897,535.30	\$1,797,840.94
FAILED IMPORT CHARGE	(\$1,741.38)	(\$722.30)	(\$11.54)	(\$339.90)	(\$700.03)	(\$471.72)	\$0.00
	14	15	16	17	18	19	20
DAM ENERGY	\$828,439.90	\$823,303.41	\$841,059.51	\$1,137,002.54	\$1,070,995.78	\$1,275,007.33	\$688,307.09
DAM LOSSES	(\$1,723,358.54)	(\$1,757,618.76)	(\$1,568,915.52)	(\$1,878,619.56)	(\$2,080,685.06)	(\$2,351,655.94)	(\$1,222,027.67)
BALANCING ENERGY	(\$129,164.79)	(\$231,754.69)	(\$236,031.07)	(\$311,329.66)	(\$130,538.95)	(\$607,234.01)	(\$39,740.34)
BALANCING LOSSES	\$37,154.01	\$78,500.67	\$96,724.11	\$125,542.53	\$134,799.31	\$325,166.64	(\$122,971.50)
BALANCING CONGESTION	\$1,079,949.98	\$823,353.48	\$772,740.84	\$1,006,637.25	\$657,941.61	\$1,644,716.02	\$554,031.10
FAILED IMPORT CHARGE	\$0.00	\$0.00	(\$252.28)	(\$266.06)	\$0.00	\$0.00	\$0.00
	21	22	23	24	25	26	27
DAM ENERGY	\$1,251,793.22	\$1,301,697.17	\$1,029,127.83	\$941,817.27	\$1,098,116.51	\$1,287,698.85	\$995,393.18
DAM LOSSES	(\$2,092,097.99)	(\$2,204,758.74)	(\$1,967,425.72)	(\$1,740,219.92)	(\$2,098,544.36)	(\$2,142,662.78)	(\$1,966,606.27)
BALANCING ENERGY	(\$458,056.14)	(\$704,789.53)	(\$275,941.49)	(\$369,233.70)	(\$351,728.88)	(\$869,728.72)	(\$434,594.79)
BALANCING LOSSES	\$122,316.29	\$278,608.18	\$167,920.16	\$207,594.52	\$168,560.71	\$299,202.32	\$234,504.19
BALANCING CONGESTION	\$591,562.75	\$665,082.01	\$435,497.66	\$498,900.20	\$954,713.40	\$164,822.09	\$101,093.58
FAILED IMPORT CHARGE	(\$12,879.08)	\$0.00	(\$2,096.63)	(\$1,521.50)	(\$1,981.87)	(\$1,120.54)	(\$357.59)
	28	29	30				
DAM ENERGY	\$877,970.68	\$868,167.22	\$783,251.95				
DAM LOSSES	(\$1,818,461.51)	(\$1,634,653.04)	(\$1,542,170.82)				
BALANCING ENERGY	(\$374,806.38)	(\$257,934.73)	(\$267,099.64)				
BALANCING LOSSES	\$87,483.40	\$57,145.81	\$117,691.45				
BALANCING CONGESTION	\$2,861,250.42	\$154,504.51	\$32,537.50				
FAILED IMPORT CHARGE	(\$518.23)	(\$1,412.66)	(\$314.29)				



SETTLEMENTS REPORT  
 NOVEMBER 2005 SETTLEMENT ADJUSTMENT  
 DECEMBER 07, 2006

12-MONTH SETTLEMENT ADJUSTMENT MARKET RESIDUALS ANALYSIS

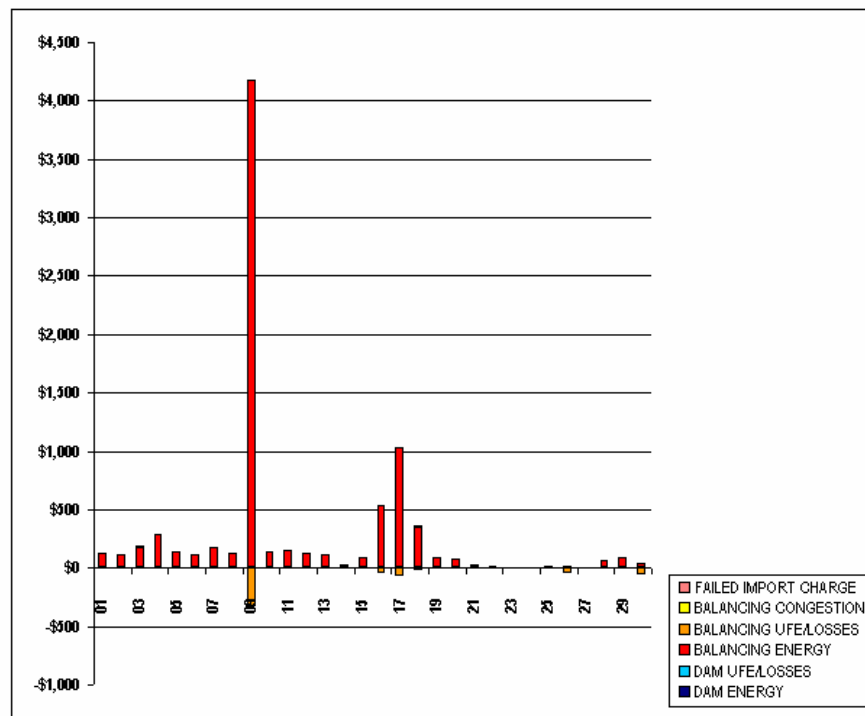
	MONDAY	TUESDAY	WEDNESDAY	THURSDAY	FRIDAY	SATURDAY	SUNDAY
		1	2	3	4	5	6
DAM ENERGY		\$1,239,942.18	\$1,514,661.50	\$1,367,811.33	\$1,312,342.40	\$1,101,078.95	\$1,135,920.99
DAM LOSSES		(\$2,188,886.59)	(\$2,192,070.48)	(\$2,442,715.01)	(\$2,319,781.74)	(\$2,093,052.26)	(\$1,931,198.08)
BALANCING ENERGY		(\$668,523.40)	(\$835,549.66)	(\$453,525.31)	(\$674,874.07)	(\$394,101.93)	(\$309,005.98)
BALANCING LOSSES		\$277,738.83	\$190,818.42	\$269,568.84	\$340,230.53	\$196,734.40	\$69,586.95
BALANCING CONGESTION		\$418,855.45	\$1,307,309.40	\$1,404,631.16	\$874,721.63	\$743,548.56	\$704,872.44
FAILED IMPORT CHARGE		(\$10,418.85)	(\$7,889.06)	(\$10,318.68)	(\$439.11)	\$0.00	(\$29.03)
	7	8	9	10	11	12	13
DAM ENERGY	\$993,954.02	\$1,242,403.17	\$1,015,061.28	\$1,148,468.20	\$1,072,283.54	\$1,077,613.88	\$831,428.05
DAM LOSSES	(\$1,789,480.54)	(\$2,105,991.21)	(\$1,936,940.63)	(\$2,139,469.50)	(\$2,062,667.35)	(\$2,084,602.37)	(\$1,606,001.75)
BALANCING ENERGY	(\$226,351.41)	(\$354,756.83)	(\$459,124.25)	(\$384,309.56)	(\$256,710.36)	(\$388,882.31)	(\$179,293.62)
BALANCING LOSSES	\$107,954.56	\$100,559.92	\$107,024.80	\$99,095.31	\$67,779.77	\$234,632.82	\$87,531.96
BALANCING CONGESTION	\$522,128.96	\$700,759.99	\$624,982.93	\$1,293,883.84	\$1,723,584.18	\$1,697,537.63	\$1,797,843.35
FAILED IMPORT CHARGE	(\$1,741.49)	(\$722.34)	(\$11.54)	(\$339.93)	(\$700.04)	(\$471.72)	\$0.00
	14	15	16	17	18	19	20
DAM ENERGY	\$828,439.90	\$823,303.41	\$841,059.51	\$1,137,002.54	\$1,070,995.78	\$1,275,007.33	\$588,307.09
DAM LOSSES	(\$1,723,358.54)	(\$1,757,618.76)	(\$1,568,915.52)	(\$1,878,619.58)	(\$2,080,685.06)	(\$2,351,655.94)	(\$1,222,027.67)
BALANCING ENERGY	(\$129,133.50)	(\$231,664.93)	(\$235,499.16)	(\$310,298.37)	(\$130,183.69)	(\$607,145.86)	(\$39,667.81)
BALANCING LOSSES	\$37,153.26	\$78,492.39	\$96,682.92	\$125,471.94	\$134,774.93	\$325,164.45	(\$122,973.55)
BALANCING CONGESTION	\$1,079,951.58	\$823,354.85	\$772,742.15	\$1,006,636.79	\$657,943.05	\$1,644,718.26	\$554,032.58
FAILED IMPORT CHARGE	\$0.00	\$0.00	(\$252.34)	(\$266.00)	\$0.00	\$0.00	\$0.00
	21	22	23	24	25	26	27
DAM ENERGY	\$1,251,793.22	\$1,301,697.17	\$1,029,127.83	\$941,817.27	\$1,098,116.51	\$1,287,698.85	\$995,393.18
DAM LOSSES	(\$2,092,097.99)	(\$2,204,758.74)	(\$1,967,425.72)	(\$1,740,219.92)	(\$2,098,544.36)	(\$2,142,662.78)	(\$1,966,606.27)
BALANCING ENERGY	(\$458,033.43)	(\$704,779.69)	(\$275,933.97)	(\$369,227.09)	(\$351,722.05)	(\$969,719.15)	(\$434,588.59)
BALANCING LOSSES	\$122,316.48	\$278,609.08	\$167,920.18	\$207,594.59	\$168,561.03	\$299,161.88	\$234,504.52
BALANCING CONGESTION	\$591,563.98	\$665,082.47	\$435,498.77	\$498,901.41	\$954,716.26	\$164,822.36	\$101,093.65
FAILED IMPORT CHARGE	(\$12,878.95)	\$0.00	(\$2,096.68)	(\$1,521.47)	(\$1,981.81)	(\$1,120.44)	(\$357.57)
	28	29	30				
DAM ENERGY	\$877,970.68	\$868,167.22	\$783,251.95				
DAM LOSSES	(\$1,818,461.51)	(\$1,634,653.04)	(\$1,542,170.82)				
BALANCING ENERGY	(\$374,738.94)	(\$257,850.24)	(\$267,059.48)				
BALANCING LOSSES	\$87,482.90	\$57,145.05	\$117,634.46				
BALANCING CONGESTION	\$2,861,250.57	\$154,505.00	\$32,537.60				
FAILED IMPORT CHARGE	(\$518.22)	(\$1,412.70)	(\$314.31)				



SETTLEMENTS REPORT  
 NOVEMBER 2005 SETTLEMENT ADJUSTMENT  
 DECEMBER 07, 2006

SETTLEMENT ADJUSTMENT MARKET RESIDUALS DELTA ANALYSIS

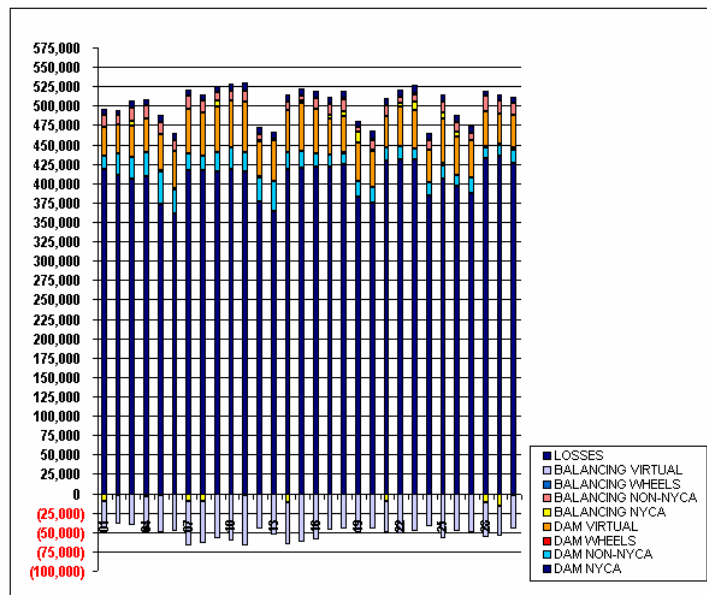
	MONDAY	TUESDAY	WEDNESDAY	THURSDAY	FRIDAY	SATURDAY	SUNDAY
		1	2	3	4	5	6
DAM ENERGY		\$0.00	\$0.00	\$0.00	\$0.00	\$0.00	\$0.00
DAM LOSSES		\$0.00	\$0.00	\$0.00	\$0.00	\$0.00	\$0.00
BALANCING ENERGY		\$124.48	\$111.66	\$182.98	\$283.76	\$133.65	\$115.96
BALANCING LOSSES		(\$0.64)	(\$1.20)	(\$3.19)	(\$10.16)	(\$4.74)	(\$4.19)
BALANCING CONGESTION		\$2.40	\$5.50	\$1.52	\$1.00	\$1.33	\$1.80
FAILED IMPORT CHARGE		\$0.08	\$0.12	(\$0.18)	\$0.03	\$0.00	(\$0.01)
	7	8	9	10	11	12	13
DAM ENERGY	\$0.00	\$0.00	\$0.00	\$0.00	\$0.00	\$0.00	\$0.00
DAM LOSSES	\$0.00	\$0.00	\$0.00	\$0.00	\$0.00	\$0.00	\$0.00
BALANCING ENERGY	\$171.36	\$123.99	\$4,174.57	\$142.75	\$154.31	\$124.73	\$109.49
BALANCING LOSSES	(\$2.96)	(\$2.81)	(\$331.75)	(\$4.29)	(\$5.65)	(\$5.08)	(\$4.88)
BALANCING CONGESTION	\$1.28	\$1.24	\$1.31	\$2.33	\$2.76	\$2.33	\$2.41
FAILED IMPORT CHARGE	(\$0.11)	(\$0.04)	\$0.00	(\$0.03)	(\$0.01)	\$0.00	\$0.00
	14	15	16	17	18	19	20
DAM ENERGY	\$0.00	\$0.00	\$0.00	\$0.00	\$0.00	\$0.00	\$0.00
DAM LOSSES	\$0.00	\$0.00	\$0.00	\$0.00	\$0.00	\$0.00	\$0.00
BALANCING ENERGY	\$31.29	\$89.76	\$531.91	\$1,031.29	\$355.26	\$88.15	\$72.53
BALANCING LOSSES	(\$0.75)	(\$9.28)	(\$41.19)	(\$70.59)	(\$24.38)	(\$2.19)	(\$2.05)
BALANCING CONGESTION	\$1.60	\$1.37	\$1.31	(\$0.46)	\$1.44	\$2.24	\$1.48
FAILED IMPORT CHARGE	\$0.00	\$0.00	(\$0.06)	\$0.06	\$0.00	\$0.00	\$0.00
	21	22	23	24	25	26	27
DAM ENERGY	\$0.00	\$0.00	\$0.00	\$0.00	\$0.00	\$0.00	\$0.00
DAM LOSSES	\$0.00	\$0.00	\$0.00	\$0.00	\$0.00	\$0.00	\$0.00
BALANCING ENERGY	\$22.71	\$9.84	\$7.52	\$6.61	\$6.83	\$9.57	\$6.20
BALANCING LOSSES	\$0.19	\$0.90	\$0.02	\$0.07	\$0.32	(\$40.44)	\$0.33
BALANCING CONGESTION	\$1.23	\$0.46	\$1.11	\$1.21	\$2.86	\$0.27	\$0.07
FAILED IMPORT CHARGE	\$0.13	\$0.00	(\$0.05)	\$0.03	\$0.06	\$0.10	\$0.02
	28	29	30				
DAM ENERGY	\$0.00	\$0.00	\$0.00				
DAM LOSSES	\$0.00	\$0.00	\$0.00				
BALANCING ENERGY	\$67.44	\$84.49	\$40.16				
BALANCING LOSSES	(\$0.50)	(\$0.76)	(\$56.99)				
BALANCING CONGESTION	\$0.15	\$0.49	\$0.10				
FAILED IMPORT CHARGE	\$0.01	(\$0.04)	(\$0.02)				



SETTLEMENTS REPORT  
 NOVEMBER 2005 SETTLEMENT ADJUSTMENT  
 DECEMBER 07, 2006

4-MONTH SETTLEMENT ADJUSTMENT MARKET WITHDRAWALS ANALYSIS

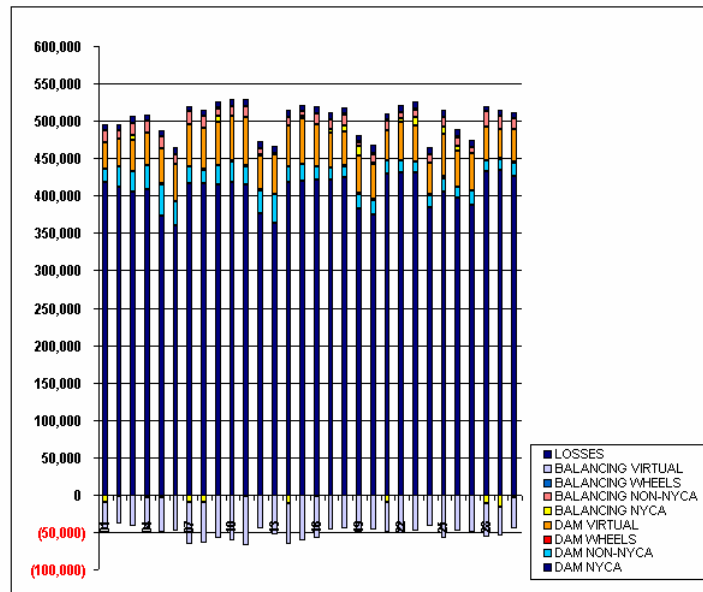
	MONDAY	TUESDAY	WEDNESDAY	THURSDAY	FRIDAY	SATURDAY	SUNDAY
		1	2	3	4	5	6
DAM NYCA		418,915	411,074	406,081	409,297	373,446	360,566
DAM NON-NYCA		16,673	27,596	27,243	30,655	41,882	31,683
DAM WHEELS		0	0	0	0	800	750
DAM VIRTUAL		36,311	37,661	41,584	43,835	47,231	48,565
BALANCING NYCA		(9,330)	(1,954)	5,502	(3,357)	(2,836)	(22)
BALANCING NON-NYCA		15,780	11,083	16,513	16,728	16,097	14,295
BALANCING WHEELS		114	0	375	0	0	(150)
BALANCING VIRTUAL		(36,311)	(37,661)	(41,584)	(43,835)	(47,231)	(48,565)
LOSSES		8,256	7,220	8,913	7,185	8,272	9,235
	7	8	9	10	11	12	13
DAM NYCA	416,127	416,413	414,430	418,007	414,727	376,963	364,222
DAM NON-NYCA	22,364	18,567	26,037	27,666	25,056	30,578	37,815
DAM WHEELS	0	480	0	800	800	800	800
DAM VIRTUAL	56,777	55,054	58,645	60,236	64,616	45,388	52,251
BALANCING NYCA	(9,886)	(9,714)	7,563	(548)	(2,456)	1,868	(459)
BALANCING NON-NYCA	17,763	15,770	10,237	12,028	13,618	7,183	1,748
BALANCING WHEELS	0	150	300	0	0	400	0
BALANCING VIRTUAL	(56,777)	(55,054)	(58,645)	(60,236)	(64,616)	(45,388)	(52,251)
LOSSES	7,142	8,767	8,198	10,026	10,466	9,299	10,014
	14	15	16	17	18	19	20
DAM NYCA	418,489	419,638	421,141	421,170	423,906	382,623	374,685
DAM NON-NYCA	20,898	22,419	17,140	15,522	15,316	19,596	20,125
DAM WHEELS	0	0	0	0	1,200	800	800
DAM VIRTUAL	54,918	62,070	57,599	47,454	45,544	49,941	46,255
BALANCING NYCA	(11,466)	2,781	(1,347)	4,642	7,162	12,962	1,636
BALANCING NON-NYCA	10,107	6,164	14,197	12,626	15,360	6,133	11,777
BALANCING WHEELS	0	50	200	200	710	63	1,598
BALANCING VIRTUAL	(54,918)	(62,070)	(57,599)	(47,454)	(45,544)	(49,941)	(46,255)
LOSSES	10,318	6,822	9,229	9,342	9,349	6,902	10,483
	21	22	23	24	25	26	27
DAM NYCA	429,731	431,344	430,483	384,541	405,398	396,580	387,123
DAM NON-NYCA	16,802	16,300	14,904	16,476	17,528	14,671	19,551
DAM WHEELS	0	0	0	800	2,931	0	400
DAM VIRTUAL	40,559	51,625	48,698	41,483	57,056	49,269	49,150
BALANCING NYCA	(9,492)	4,161	10,317	358	8,666	6,565	(579)
BALANCING NON-NYCA	13,775	7,340	10,410	11,366	13,560	11,131	8,004
BALANCING WHEELS	200	1,142	1,187	(585)	(583)	1,216	0
BALANCING VIRTUAL	(40,559)	(51,625)	(48,698)	(41,483)	(57,056)	(49,269)	(49,150)
LOSSES	9,521	9,304	10,461	9,775	9,260	9,265	9,229
	28	29	30				
DAM NYCA	432,335	434,976	425,505				
DAM NON-NYCA	14,235	14,452	18,299				
DAM WHEELS	800	1,323	1,724				
DAM VIRTUAL	44,705	38,583	43,044				
BALANCING NYCA	(11,489)	(16,760)	(3,004)				
BALANCING NON-NYCA	20,600	16,999	14,378				
BALANCING WHEELS	(400)	(75)	0				
BALANCING VIRTUAL	(44,705)	(38,583)	(43,044)				
LOSSES	6,683	8,129	8,496				



SETTLEMENTS REPORT  
 NOVEMBER 2005 SETTLEMENT ADJUSTMENT  
 DECEMBER 07, 2006

12-MONTH SETTLEMENT ADJUSTMENT MARKET WITHDRAWALS ANALYSIS

	MONDAY	TUESDAY	WEDNESDAY	THURSDAY	FRIDAY	SATURDAY	SUNDAY
		<b>1</b>	<b>2</b>	<b>3</b>	<b>4</b>	<b>5</b>	<b>6</b>
DAM NYCA		418,915	411,074	406,081	409,297	373,446	360,566
DAM NON-NYCA		16,673	27,596	27,243	30,655	41,882	31,683
DAM WHEELS		0	0	0	0	800	750
DAM VIRTUAL		36,311	37,661	41,584	43,835	47,231	48,565
BALANCING NYCA		(9,331)	(1,956)	5,500	(3,360)	(2,838)	(24)
BALANCING NON-NYCA		15,780	11,083	16,513	16,728	16,097	14,295
BALANCING WHEELS		114	0	375	0	0	(150)
BALANCING VIRTUAL		(36,311)	(37,661)	(41,584)	(43,835)	(47,231)	(48,565)
UFE/LOSSES		8,258	7,221	8,915	7,168	8,275	9,238
	<b>7</b>	<b>8</b>	<b>9</b>	<b>10</b>	<b>11</b>	<b>12</b>	<b>13</b>
DAM NYCA	416,127	416,413	414,430	418,007	414,727	376,963	364,222
DAM NON-NYCA	22,364	18,587	26,037	27,666	25,056	30,578	37,615
DAM WHEELS	0	480	0	800	800	800	800
DAM VIRTUAL	56,777	55,054	58,645	60,236	64,616	45,388	52,251
BALANCING NYCA	(9,888)	(9,716)	7,507	(551)	(2,459)	1,865	(462)
BALANCING NON-NYCA	17,763	15,770	10,237	12,028	13,618	7,183	1,748
BALANCING WHEELS	0	150	300	0	0	400	0
BALANCING VIRTUAL	(56,777)	(55,054)	(58,645)	(60,236)	(64,616)	(45,388)	(52,251)
UFE/LOSSES	7,144	8,770	8,255	10,028	10,469	9,301	10,017
	<b>14</b>	<b>15</b>	<b>16</b>	<b>17</b>	<b>18</b>	<b>19</b>	<b>20</b>
DAM NYCA	418,489	419,638	421,141	421,170	423,906	382,623	374,665
DAM NON-NYCA	20,898	22,419	17,140	15,522	15,316	19,596	20,125
DAM WHEELS	0	0	0	0	1,200	800	800
DAM VIRTUAL	54,918	62,070	57,599	47,454	45,544	49,941	46,255
BALANCING NYCA	(11,466)	2,780	(1,348)	4,640	7,161	12,961	1,635
BALANCING NON-NYCA	10,107	6,164	14,197	12,626	15,360	6,133	11,777
BALANCING WHEELS	0	50	200	200	710	63	1,598
BALANCING VIRTUAL	(54,918)	(62,070)	(57,599)	(47,454)	(45,544)	(49,941)	(46,255)
UFE/LOSSES	10,318	8,823	9,234	9,363	9,353	8,904	10,465
	<b>21</b>	<b>22</b>	<b>23</b>	<b>24</b>	<b>25</b>	<b>26</b>	<b>27</b>
DAM NYCA	429,731	431,344	430,483	384,541	405,398	396,580	387,123
DAM NON-NYCA	16,802	16,300	14,904	16,476	17,528	14,671	19,551
DAM WHEELS	0	0	0	800	2,931	0	400
DAM VIRTUAL	40,559	51,625	48,698	41,483	57,056	49,269	49,150
BALANCING NYCA	(9,492)	4,161	10,317	358	8,666	6,565	(579)
BALANCING NON-NYCA	13,775	7,340	10,410	11,366	13,560	11,131	8,804
BALANCING WHEELS	200	1,142	1,187	(585)	(583)	1,216	0
BALANCING VIRTUAL	(40,559)	(51,625)	(48,698)	(41,483)	(57,056)	(49,269)	(49,150)
UFE/LOSSES	9,522	9,304	10,461	9,780	9,284	9,267	9,229
	<b>28</b>	<b>29</b>	<b>30</b>				
DAM NYCA	432,335	434,976	425,505				
DAM NON-NYCA	14,235	14,452	18,299				
DAM WHEELS	800	1,323	1,724				
DAM VIRTUAL	44,705	38,583	43,044				
BALANCING NYCA	(11,490)	(16,761)	(3,004)				
BALANCING NON-NYCA	20,600	16,999	14,378				
BALANCING WHEELS	(400)	(75)	0				
BALANCING VIRTUAL	(44,705)	(38,583)	(43,044)				
UFE/LOSSES	6,684	8,131	8,497				

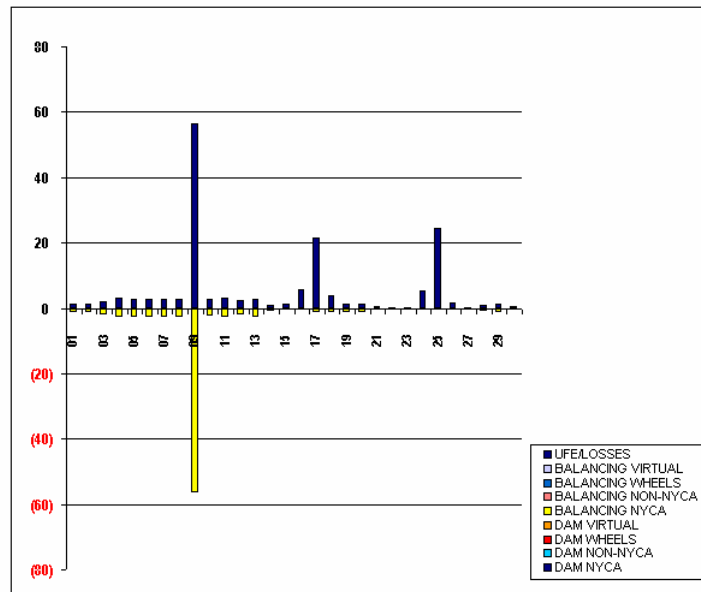




SETTLEMENTS REPORT  
 NOVEMBER 2005 SETTLEMENT ADJUSTMENT  
 DECEMBER 07, 2006

SETTLEMENT ADJUSTMENT MARKET WITHDRAWALS DELTA ANALYSIS

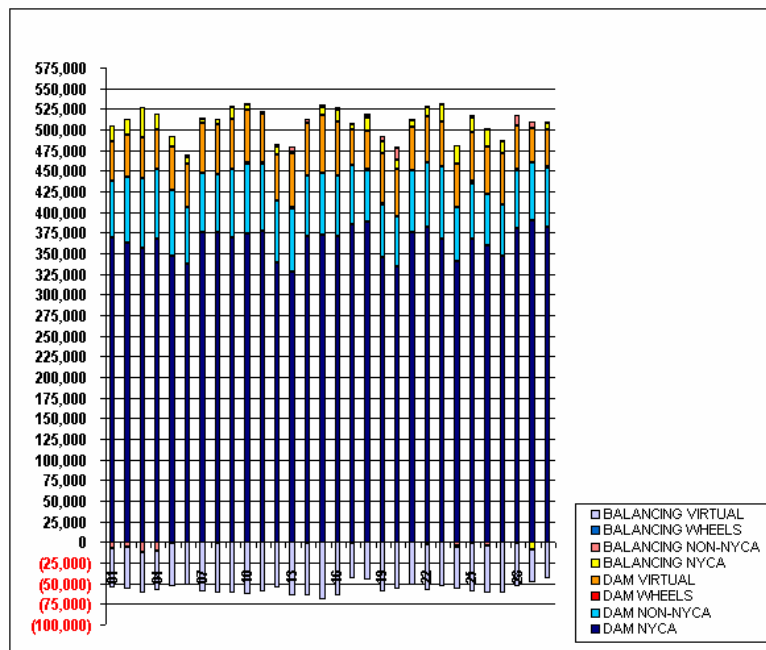
	MONDAY	TUESDAY	WEDNESDAY	THURSDAY	FRIDAY	SATURDAY	SUNDAY
		1	2	3	4	5	6
DAM NYCA		0	0	0	0	0	0
DAM NON-NYCA		0	0	0	0	0	0
DAM WHEELS		0	0	0	0	0	0
DAM VIRTUAL		0	0	0	0	0	0
BALANCING NYCA		(1)	(1)	(2)	(3)	(3)	(3)
BALANCING NON-NYCA		0	0	0	0	0	0
BALANCING WHEELS		0	0	0	0	0	0
BALANCING VIRTUAL		0	0	0	0	0	0
UFE/LOSSES		1	1	2	3	3	3
	7	8	9	10	11	12	13
DAM NYCA	0	0	0	0	0	0	0
DAM NON-NYCA	0	0	0	0	0	0	0
DAM WHEELS	0	0	0	0	0	0	0
DAM VIRTUAL	0	0	0	0	0	0	0
BALANCING NYCA	(3)	(3)	(57)	(3)	(3)	(2)	(3)
BALANCING NON-NYCA	0	0	0	0	0	0	0
BALANCING WHEELS	0	0	0	0	0	0	0
BALANCING VIRTUAL	0	0	0	0	0	0	0
UFE/LOSSES	3	3	57	3	3	2	3
	14	15	16	17	18	19	20
DAM NYCA	0	0	0	0	0	0	0
DAM NON-NYCA	0	0	0	0	0	0	0
DAM WHEELS	0	0	0	0	0	0	0
DAM VIRTUAL	0	0	0	0	0	0	0
BALANCING NYCA	(1)	(0)	(1)	(1)	(1)	(1)	(1)
BALANCING NON-NYCA	0	0	0	0	0	0	0
BALANCING WHEELS	0	0	0	0	0	0	0
BALANCING VIRTUAL	0	0	0	0	0	0	0
UFE/LOSSES	1	1	6	21	4	1	1
	21	22	23	24	25	26	27
DAM NYCA	0	0	0	0	0	0	0
DAM NON-NYCA	0	0	0	0	0	0	0
DAM WHEELS	0	0	0	0	0	0	0
DAM VIRTUAL	0	0	0	0	0	0	0
BALANCING NYCA	(0)	(0)	(0)	(0)	(0)	(0)	(0)
BALANCING NON-NYCA	0	0	0	0	0	0	0
BALANCING WHEELS	0	0	0	0	0	0	0
BALANCING VIRTUAL	0	0	0	0	0	0	0
UFE/LOSSES	0	0	0	5	24	2	0
	28	29	30				
DAM NYCA	0	0	0				
DAM NON-NYCA	0	0	0				
DAM WHEELS	0	0	0				
DAM VIRTUAL	0	0	0				
BALANCING NYCA	(1)	(1)	(1)				
BALANCING NON-NYCA	0	0	0				
BALANCING WHEELS	0	0	0				
BALANCING VIRTUAL	0	0	0				
UFE/LOSSES	1	1	1				



SETTLEMENTS REPORT  
 NOVEMBER 2005 SETTLEMENT ADJUSTMENT  
 DECEMBER 07, 2006

4-MONTH SETTLEMENT ADJUSTMENT MARKET SUPPLY ANALYSIS

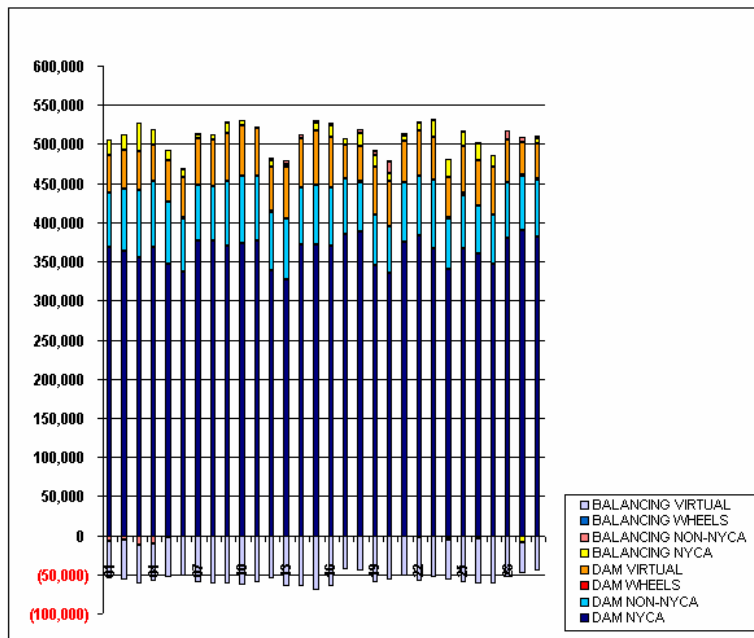
	MONDAY	TUESDAY	WEDNESDAY	THURSDAY	FRIDAY	SATURDAY	SUNDAY
		1	2	3	4	5	6
DAM NYCA		368,495	363,484	355,649	367,867	347,445	336,918
DAM NON-NYCA		69,662	78,814	84,747	84,299	78,420	68,244
DAM WHEELS		0	0	0	0	800	750
DAM VIRTUAL		47,093	50,804	50,180	47,534	52,532	52,556
BALANCING NYCA		20,146	19,265	35,937	19,388	12,816	8,449
BALANCING NON-NYCA		(7,628)	(6,472)	(11,812)	(11,046)	(1,820)	2,147
BALANCING WHEELS		114	0	375	0	0	(150)
BALANCING VIRTUAL		(47,093)	(50,804)	(50,180)	(47,534)	(52,532)	(52,556)
	7	8	9	10	11	12	13
DAM NYCA	376,225	375,950	369,733	373,874	377,020	338,825	327,415
DAM NON-NYCA	71,212	69,330	62,405	85,427	62,049	74,768	77,289
DAM WHEELS	0	480	0	800	800	800	800
DAM VIRTUAL	60,561	60,595	61,395	63,082	60,002	55,769	65,029
BALANCING NYCA	4,862	5,883	13,375	7,715	2,234	9,351	3,007
BALANCING NON-NYCA	1,610	(1,334)	1,002	252	107	2,946	5,628
BALANCING WHEELS	0	150	300	0	0	400	0
BALANCING VIRTUAL	(60,561)	(60,595)	(61,395)	(63,082)	(60,002)	(55,769)	(65,029)
	14	15	16	17	18	19	20
DAM NYCA	371,185	371,941	370,717	385,220	388,273	345,517	334,641
DAM NON-NYCA	72,912	75,039	72,970	71,289	62,742	63,950	59,526
DAM WHEELS	0	0	0	0	1,200	800	800
DAM VIRTUAL	63,756	70,435	65,438	42,953	45,849	60,582	57,377
BALANCING NYCA	(666)	9,332	15,118	7,640	16,469	15,254	10,345
BALANCING NON-NYCA	4,915	3,512	1,995	(716)	3,610	5,495	14,174
BALANCING WHEELS	0	50	200	200	710	63	1,598
BALANCING VIRTUAL	(63,756)	(70,435)	(65,438)	(42,953)	(45,849)	(60,582)	(57,377)
	21	22	23	24	25	26	27
DAM NYCA	375,281	382,635	366,802	340,875	367,414	359,804	347,190
DAM NON-NYCA	76,016	77,037	88,294	64,318	67,278	61,541	61,721
DAM WHEELS	0	0	0	800	2,931	0	400
DAM VIRTUAL	52,680	56,786	53,719	52,456	59,868	57,370	62,054
BALANCING NYCA	7,337	10,688	21,921	21,972	17,374	21,666	13,809
BALANCING NON-NYCA	1,703	(1,911)	(142)	(4,553)	2,776	(4,798)	1,408
BALANCING WHEELS	200	1,142	1,187	(585)	(583)	1,216	0
BALANCING VIRTUAL	(52,680)	(56,785)	(53,719)	(52,456)	(59,868)	(57,370)	(62,054)
	28	29	30				
DAM NYCA	380,232	390,154	382,317				
DAM NON-NYCA	70,562	69,272	71,477				
DAM WHEELS	800	1,323	1,724				
DAM VIRTUAL	53,327	40,837	44,877				
BALANCING NYCA	(295)	(8,571)	7,425				
BALANCING NON-NYCA	11,862	7,192	2,455				
BALANCING WHEELS	(400)	(75)	0				
BALANCING VIRTUAL	(53,326)	(40,837)	(44,877)				



SETTLEMENTS REPORT  
 NOVEMBER 2005 SETTLEMENT ADJUSTMENT  
 DECEMBER 07, 2006

12-MONTH SETTLEMENT ADJUSTMENT MARKET SUPPLY ANALYSIS

	MONDAY	TUESDAY	WEDNESDAY	THURSDAY	FRIDAY	SATURDAY	SUNDAY
		1	2	3	4	5	6
DAM NYCA		368,495	363,484	355,649	367,867	347,445	336,918
DAM NON-NYCA		69,662	78,814	84,747	84,299	78,420	68,244
DAM WHEELS		0	0	0	0	800	750
DAM VIRTUAL		47,093	50,804	50,180	47,534	52,532	52,556
BALANCING NYCA		20,146	19,265	35,937	19,388	12,816	8,449
BALANCING NON-NYCA		(7,628)	(6,472)	(11,812)	(11,046)	(1,820)	2,147
BALANCING WHEELS		114	0	375	0	0	(150)
BALANCING VIRTUAL		(47,093)	(50,804)	(50,180)	(47,534)	(52,532)	(52,556)
	7	8	9	10	11	12	13
DAM NYCA	376,225	375,950	369,733	373,874	377,020	338,825	327,415
DAM NON-NYCA	71,212	69,330	82,405	85,427	82,049	74,768	77,289
DAM WHEELS	0	480	0	800	800	800	800
DAM VIRTUAL	60,581	60,595	61,395	63,082	60,002	55,769	65,029
BALANCING NYCA	4,863	5,883	13,375	7,715	2,234	9,352	3,007
BALANCING NON-NYCA	1,610	(1,334)	1,002	252	107	2,946	5,628
BALANCING WHEELS	0	150	300	0	0	400	0
BALANCING VIRTUAL	(60,581)	(60,595)	(61,395)	(63,082)	(60,002)	(55,769)	(65,029)
	14	15	16	17	18	19	20
DAM NYCA	371,185	371,941	370,717	385,220	388,273	345,517	334,641
DAM NON-NYCA	72,312	75,039	72,370	71,289	62,742	63,950	59,526
DAM WHEELS	0	0	0	0	1,200	800	800
DAM VIRTUAL	63,756	70,435	65,438	42,953	45,049	60,502	57,377
BALANCING NYCA	(666)	9,333	15,123	7,660	16,471	15,254	10,345
BALANCING NON-NYCA	4,915	3,512	1,995	(716)	3,610	5,495	14,174
BALANCING WHEELS	0	50	200	200	710	63	1,598
BALANCING VIRTUAL	(63,756)	(70,435)	(65,438)	(42,953)	(45,049)	(60,502)	(57,377)
	21	22	23	24	25	26	27
DAM NYCA	375,281	382,635	366,802	340,880	367,439	359,806	347,190
DAM NON-NYCA	76,016	77,037	88,294	64,318	67,278	61,541	61,721
DAM WHEELS	0	0	0	800	2,931	0	400
DAM VIRTUAL	52,680	56,786	53,719	52,456	59,868	57,370	62,054
BALANCING NYCA	7,337	10,688	21,921	21,972	17,374	21,666	13,809
BALANCING NON-NYCA	1,703	(1,911)	(142)	(4,553)	2,776	(4,798)	1,408
BALANCING WHEELS	200	1,142	1,187	(585)	(583)	1,216	0
BALANCING VIRTUAL	(52,680)	(56,785)	(53,719)	(52,456)	(59,868)	(57,370)	(62,054)
	28	29	30				
DAM NYCA	380,232	390,154	382,317				
DAM NON-NYCA	70,562	69,272	71,477				
DAM WHEELS	800	1,323	1,724				
DAM VIRTUAL	53,327	40,837	44,877				
BALANCING NYCA	(295)	(8,571)	7,425				
BALANCING NON-NYCA	11,862	7,192	2,455				
BALANCING WHEELS	(400)	(75)	0				
BALANCING VIRTUAL	(53,326)	(40,837)	(44,877)				



SETTLEMENTS REPORT  
 NOVEMBER 2005 SETTLEMENT ADJUSTMENT  
 DECEMBER 07, 2006

SETTLEMENT ADJUSTMENT MARKET SUPPLY DELTA ANALYSIS

	MONDAY	TUESDAY	WEDNESDAY	THURSDAY	FRIDAY	SATURDAY	SUNDAY
		<b>1</b>	<b>2</b>	<b>3</b>	<b>4</b>	<b>5</b>	<b>6</b>
DAM NYCA		0	0	0	0	0	0
DAM NON-NYCA		0	0	0	0	0	0
DAM WHEELS		0	0	0	0	0	0
DAM VIRTUAL		0	0	0	0	0	0
BALANCING NYCA		0	0	(0)	1	(0)	0
BALANCING NON-NYCA		0	0	0	0	0	0
BALANCING WHEELS		0	0	0	0	0	0
BALANCING VIRTUAL		0	0	0	0	0	0
	<b>7</b>	<b>8</b>	<b>9</b>	<b>10</b>	<b>11</b>	<b>12</b>	<b>13</b>
DAM NYCA	0	0	0	0	0	0	0
DAM NON-NYCA	0	0	0	0	0	0	0
DAM WHEELS	0	0	0	0	0	0	0
DAM VIRTUAL	0	0	0	0	0	0	0
BALANCING NYCA	0	0	0	0	0	0	0
BALANCING NON-NYCA	0	0	0	0	0	0	0
BALANCING WHEELS	0	0	0	0	0	0	0
BALANCING VIRTUAL	0	0	0	0	0	0	0
	<b>14</b>	<b>15</b>	<b>16</b>	<b>17</b>	<b>18</b>	<b>19</b>	<b>20</b>
DAM NYCA	0	0	0	0	0	0	0
DAM NON-NYCA	0	0	0	0	0	0	0
DAM WHEELS	0	0	0	0	0	0	0
DAM VIRTUAL	0	0	0	0	0	0	0
BALANCING NYCA	0	1	5	20	3	0	0
BALANCING NON-NYCA	0	0	0	0	0	0	0
BALANCING WHEELS	0	0	0	0	0	0	0
BALANCING VIRTUAL	0	0	0	0	0	0	0
	<b>21</b>	<b>22</b>	<b>23</b>	<b>24</b>	<b>25</b>	<b>26</b>	<b>27</b>
DAM NYCA	0	0	0	5	24	2	0
DAM NON-NYCA	0	0	0	0	0	0	0
DAM WHEELS	0	0	0	0	0	0	0
DAM VIRTUAL	0	0	0	0	0	0	0
BALANCING NYCA	0	0	0	0	0	0	0
BALANCING NON-NYCA	0	0	0	0	0	0	0
BALANCING WHEELS	0	0	0	0	0	0	0
BALANCING VIRTUAL	0	0	0	0	0	0	0
	<b>28</b>	<b>29</b>	<b>30</b>				
DAM NYCA	0	0	0				
DAM NON-NYCA	0	0	0				
DAM WHEELS	0	0	0				
DAM VIRTUAL	0	0	0				
BALANCING NYCA	0	0	0				
BALANCING NON-NYCA	0	0	0				
BALANCING WHEELS	0	0	0				
BALANCING VIRTUAL	0	0	0				

