

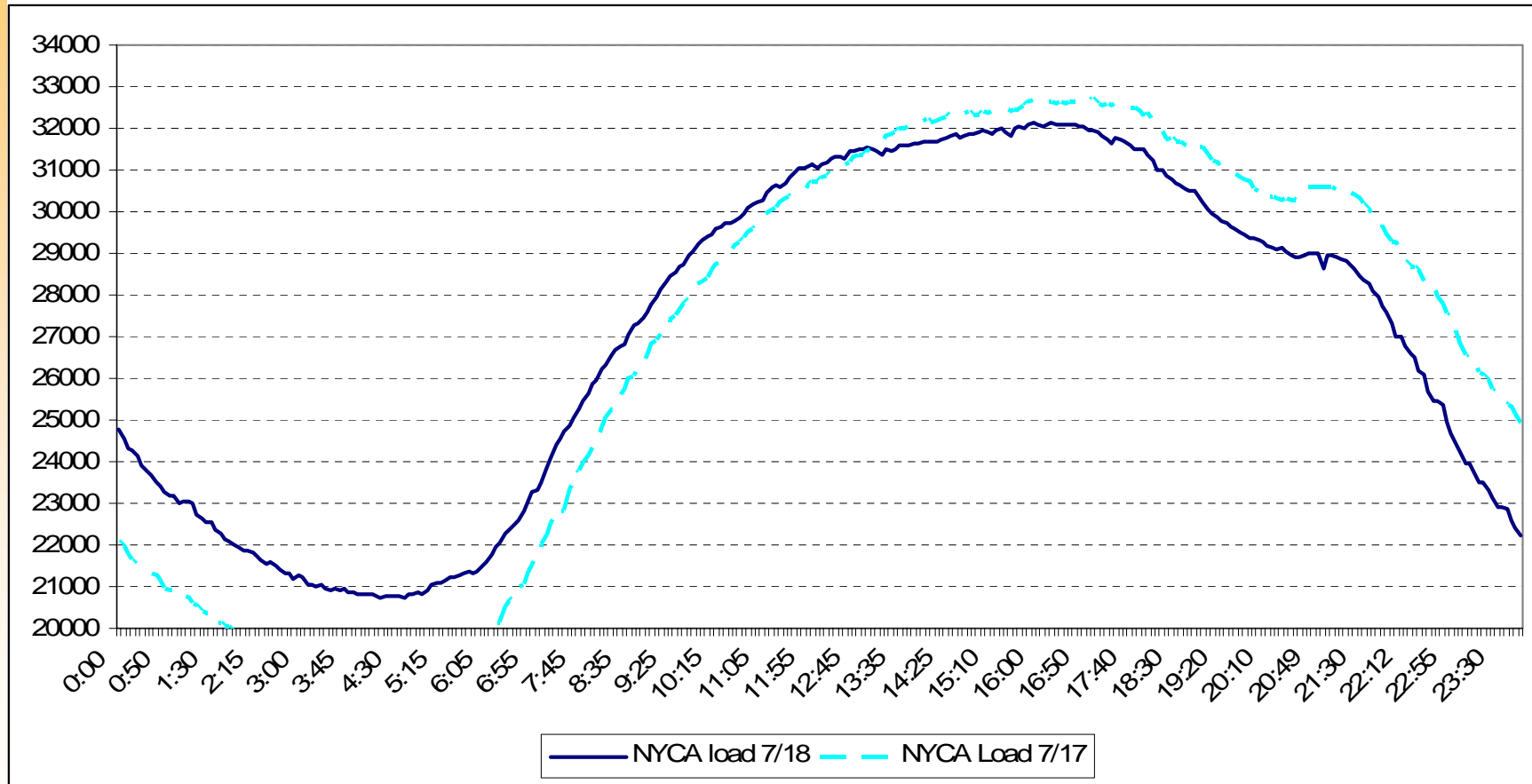
# **July 18/19 EDRP/SCR Events Preliminary Analysis**

Installed Capacity Working Group  
August 1, 2006

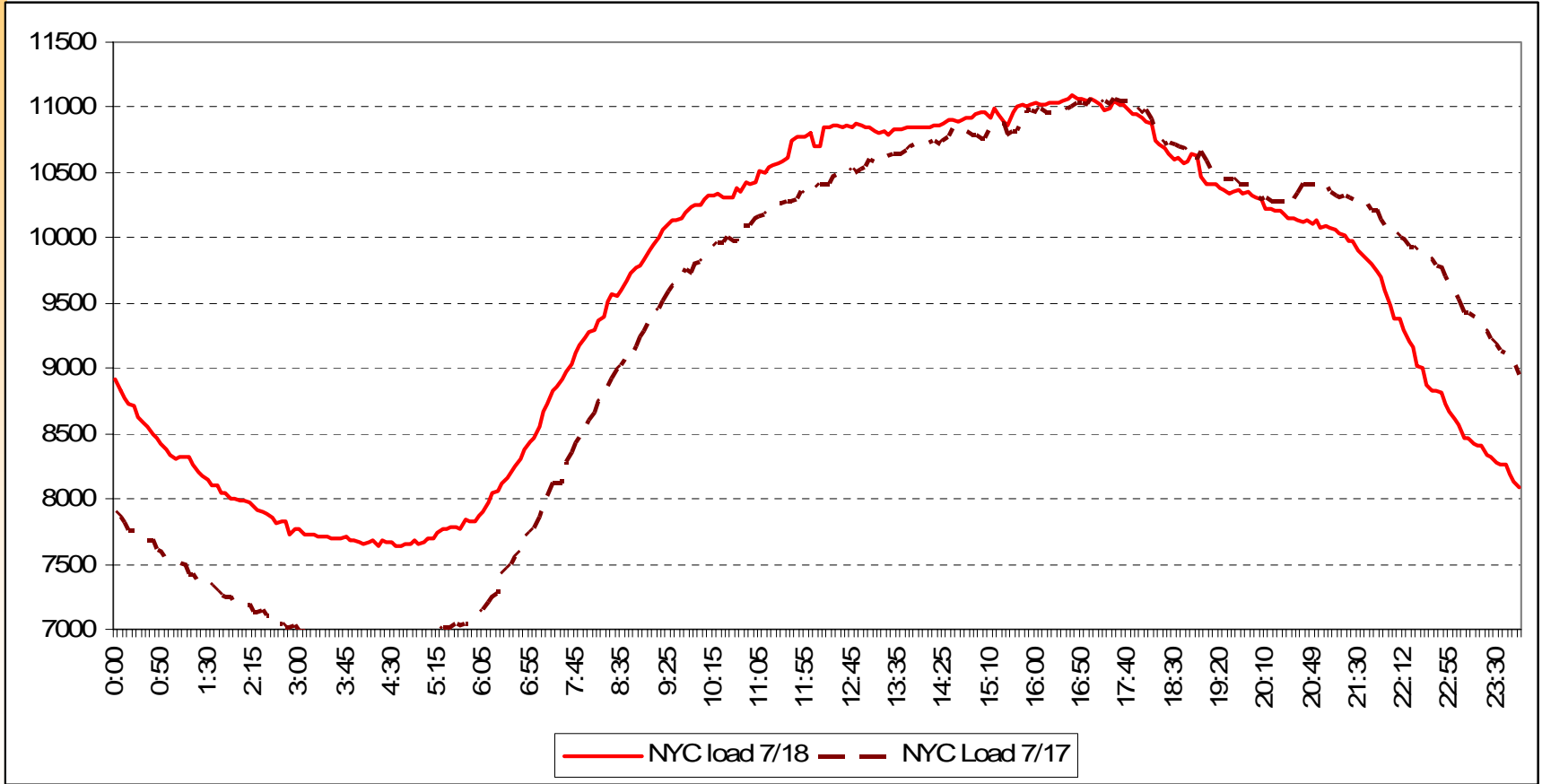
Draft – For discussion only

## Draft – For discussion only

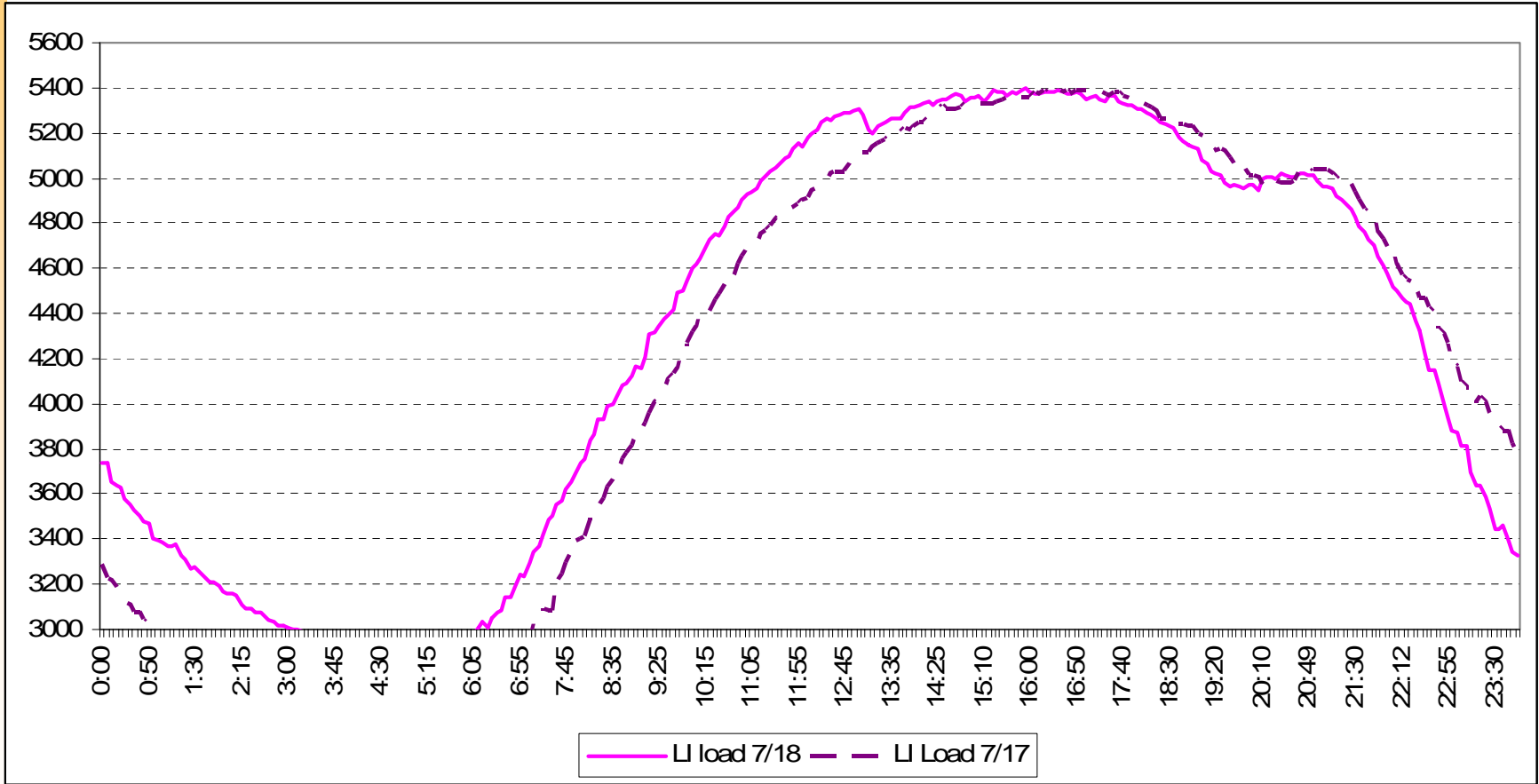
- ✓ On July 18, EDRP and SCR resources were activated in Zones H-K between 1 pm and 10 pm.
  - *Estimated performance by Zone:*
    - ✧ **H – 4 MW (1 MW SCR, 3 MW EDRP)**
    - ✧ **I – 15 MW (15 MW SCR)**
    - ✧ **J – 414 MW (333 MW SCR, 81 MW EDRP)**
    - ✧ **K – 225 MW (170 MW SCR, 55 MW EDRP)**
    - ✧ **Total – 657 MW**
- ✓ On July 19, due to local network problems experienced in the Con Ed territory, the NYISO activated EDRP and SCR resources in Zone J from approximately 10:45 am to 7 pm. NYISO's actions were consistent with Services Tariff Sections 5.11.12(a) and Attachment G.
  - *Estimated 414 MW (81 MW EDRP, 333 MW SCR)*



Draft – For discussion only



Draft – For discussion only



Draft – For discussion only