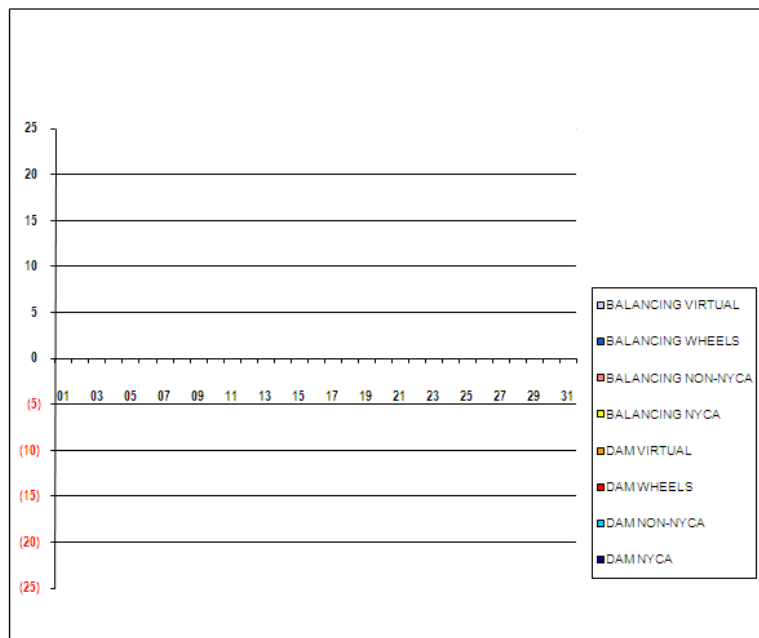


SETTLEMENTS REPORT
January 2010 Close-Out Settlement
October 6, 2010

Close-Out Settlement – Market Supply Delta Analysis

	MONDAY	TUESDAY	WEDNESDAY	THURSDAY	FRIDAY	SATURDAY	SUNDAY
					1	2	3
DAM NYCA					0	0	0
DAM NON-NYCA					0	0	0
DAM WHEELS					0	0	0
DAM VIRTUAL					0	0	0
BALANCING NYCA					0	0	0
BALANCING NON-NYCA					0	0	0
BALANCING WHEELS					0	0	0
BALANCING VIRTUAL					0	0	0
	4	5	6	7	8	9	10
DAM NYCA	0	0	0	0	0	0	0
DAM NON-NYCA	0	0	0	0	0	0	0
DAM WHEELS	0	0	0	0	0	0	0
DAM VIRTUAL	0	0	0	0	0	0	0
BALANCING NYCA	0	0	0	0	0	0	0
BALANCING NON-NYCA	0	0	0	0	0	0	0
BALANCING WHEELS	0	0	0	0	0	0	0
BALANCING VIRTUAL	0	0	0	0	0	0	0
	11	12	13	14	15	16	17
DAM NYCA	0	0	0	0	0	0	0
DAM NON-NYCA	0	0	0	0	0	0	0
DAM WHEELS	0	0	0	0	0	0	0
DAM VIRTUAL	0	0	0	0	0	0	0
BALANCING NYCA	0	0	0	0	0	0	0
BALANCING NON-NYCA	0	0	0	0	0	0	0
BALANCING WHEELS	0	0	0	0	0	0	0
BALANCING VIRTUAL	0	0	0	0	0	0	0
	18	19	20	21	22	23	24
DAM NYCA	0	0	0	0	0	0	0
DAM NON-NYCA	0	0	0	0	0	0	0
DAM WHEELS	0	0	0	0	0	0	0
DAM VIRTUAL	0	0	0	0	0	0	0
BALANCING NYCA	0	0	0	0	0	0	0
BALANCING NON-NYCA	0	0	0	0	0	0	0
BALANCING WHEELS	0	0	0	0	0	0	0
BALANCING VIRTUAL	0	0	0	0	0	0	0
	25	26	27	28	29	30	31
DAM NYCA	0	0	0	0	0	0	0
DAM NON-NYCA	0	0	0	0	0	0	0
DAM WHEELS	0	0	0	0	0	0	0
DAM VIRTUAL	0	0	0	0	0	0	0
BALANCING NYCA	0	0	0	0	0	0	0
BALANCING NON-NYCA	0	0	0	0	0	0	0
BALANCING WHEELS	0	0	0	0	0	0	0
BALANCING VIRTUAL	0	0	0	0	0	0	0



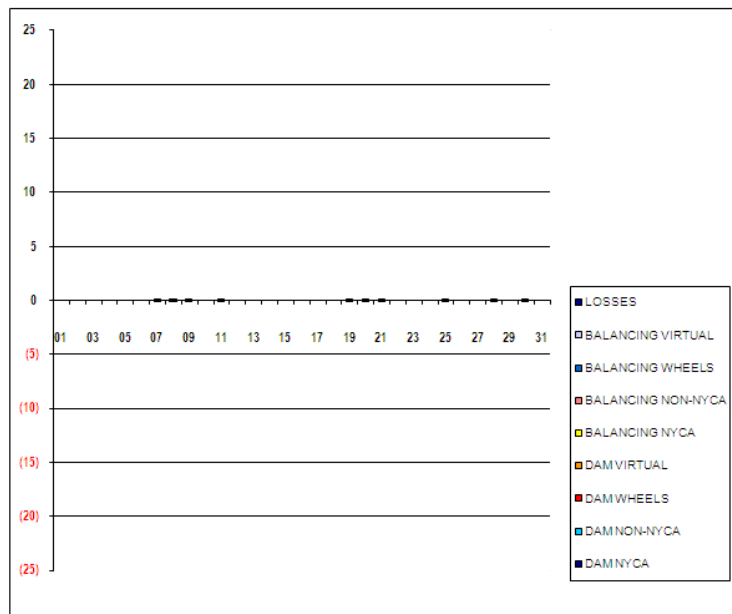
SETTLEMENTS REPORT

January 2010 Close-Out Settlement

October 6, 2010

Close-Out Settlement – Market Withdrawals Delta Analysis

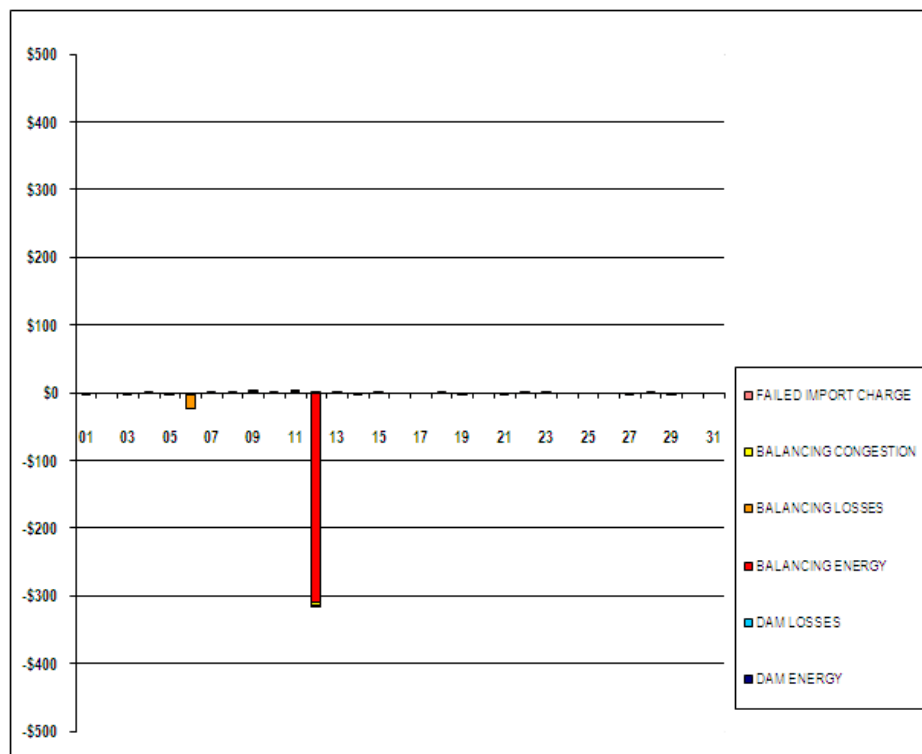
	MONDAY	TUESDAY	WEDNESDAY	THURSDAY	FRIDAY	SATURDAY	SUNDAY
DAM NYCA					1	2	3
DAM NON-NYCA					0	0	0
DAM WHEELS					0	0	0
DAM VIRTUAL					0	0	0
BALANCING NYCA					0	0	0
BALANCING NON-NYCA					0	0	0
BALANCING WHEELS					0	0	0
BALANCING VIRTUAL					0	0	0
UFE/LOSSES					0	0	0
	4	5	6	7	8	9	10
DAM NYCA	0	0	0	0	0	0	0
DAM NON-NYCA	0	0	0	0	0	0	0
DAM WHEELS	0	0	0	0	0	0	0
DAM VIRTUAL	0	0	0	0	0	0	0
BALANCING NYCA	0	0	0	0	0	0	0
BALANCING NON-NYCA	0	0	0	0	0	0	0
BALANCING WHEELS	0	0	0	0	0	0	0
BALANCING VIRTUAL	0	0	0	0	0	0	0
UFE/LOSSES	0	0	0	(0)	(0)	(0)	0
	11	12	13	14	15	16	17
DAM NYCA	0	0	0	0	0	0	0
DAM NON-NYCA	0	0	0	0	0	0	0
DAM WHEELS	0	0	0	0	0	0	0
DAM VIRTUAL	0	0	0	0	0	0	0
BALANCING NYCA	0	0	0	0	0	0	0
BALANCING NON-NYCA	0	0	0	0	0	0	0
BALANCING WHEELS	0	0	0	0	0	0	0
BALANCING VIRTUAL	0	0	0	0	0	0	0
UFE/LOSSES	(0)	0	0	0	0	0	0
	18	19	20	21	22	23	24
DAM NYCA	0	0	0	0	0	0	0
DAM NON-NYCA	0	0	0	0	0	0	0
DAM WHEELS	0	0	0	0	0	0	0
DAM VIRTUAL	0	0	0	0	0	0	0
BALANCING NYCA	0	0	0	0	0	0	0
BALANCING NON-NYCA	0	0	0	0	0	0	0
BALANCING WHEELS	0	0	0	0	0	0	0
BALANCING VIRTUAL	0	0	0	0	0	0	0
UFE/LOSSES	0	(0)	(0)	(0)	0	0	0
	25	26	27	28	29	30	31
DAM NYCA	0	0	0	0	0	0	0
DAM NON-NYCA	0	0	0	0	0	0	0
DAM WHEELS	0	0	0	0	0	0	0
DAM VIRTUAL	0	0	0	0	0	0	0
BALANCING NYCA	0	0	0	0	0	0	0
BALANCING NON-NYCA	0	0	0	0	0	0	0
BALANCING WHEELS	0	0	0	0	0	0	0
BALANCING VIRTUAL	0	0	0	0	0	0	0
UFE/LOSSES	(0)	0	0	(0)	0	(0)	0



SETTLEMENTS REPORT
January 2010 Close-Out Settlement
October 6, 2010

Close-Out Settlement – Market Residuals Delta Analysis

	MONDAY	TUESDAY	WEDNESDAY	THURSDAY	FRIDAY	SATURDAY	SUNDAY
					1	2	3
DAM ENERGY					\$0.00	\$0.00	\$0.00
DAM LOSSES					\$0.00	\$0.00	\$0.00
BALANCING ENERGY					\$0.00	\$0.00	\$0.00
BALANCING LOSSES					\$0.00	\$0.00	\$0.00
BALANCING CONGESTION					\$0.00	\$0.00	\$0.00
FAILED IMPORT CHARGE					(\$0.05)	\$0.00	(\$0.03)
	4	5	6	7	8	9	10
DAM ENERGY	\$0.00	\$0.00	\$0.00	\$0.01	\$0.01	\$0.00	\$0.00
DAM LOSSES	\$0.00	\$0.00	\$0.00	\$0.00	\$0.00	\$0.01	\$0.00
BALANCING ENERGY	\$0.00	\$0.00	(\$3.54)	\$0.00	\$0.00	\$0.00	\$0.00
BALANCING LOSSES	\$0.00	\$0.00	(\$19.94)	\$0.00	\$0.00	\$0.00	\$0.00
BALANCING CONGESTION	\$0.00	\$0.00	\$0.00	\$0.00	\$0.00	\$0.00	\$0.00
FAILED IMPORT CHARGE	\$0.09	(\$0.03)	\$0.00	\$0.00	\$0.00	\$0.01	\$0.05
	11	12	13	14	15	16	17
DAM ENERGY	\$0.00	\$0.00	\$0.00	\$0.00	\$0.00	\$0.00	\$0.00
DAM LOSSES	\$0.00	\$0.00	\$0.00	\$0.00	\$0.00	\$0.00	\$0.00
BALANCING ENERGY	\$0.00	(\$310.43)	\$0.00	\$0.00	\$0.00	\$0.00	\$0.00
BALANCING LOSSES	\$0.01	\$1.50	\$0.00	\$0.00	\$0.00	\$0.00	\$0.00
BALANCING CONGESTION	\$0.01	(\$3.81)	\$0.00	\$0.00	\$0.00	\$0.00	\$0.00
FAILED IMPORT CHARGE	\$0.04	(\$0.04)	\$0.01	(\$0.02)	\$0.01	\$0.00	\$0.00
	18	19	20	21	22	23	24
DAM ENERGY	\$0.00	\$0.00	\$0.00	\$0.00	\$0.00	\$0.00	\$0.00
DAM LOSSES	\$0.00	\$0.00	\$0.00	\$0.00	\$0.00	\$0.00	\$0.00
BALANCING ENERGY	\$0.00	\$0.00	\$0.00	\$0.00	\$0.00	\$0.00	\$0.00
BALANCING LOSSES	\$0.00	\$0.00	\$0.00	\$0.00	\$0.00	\$0.00	\$0.00
BALANCING CONGESTION	\$0.00	\$0.00	\$0.00	\$0.00	\$0.00	\$0.00	\$0.00
FAILED IMPORT CHARGE	\$0.01	(\$0.01)	\$0.00	(\$0.06)	\$0.03	\$0.03	\$0.00
	25	26	27	28	29	30	31
DAM ENERGY	\$0.00	\$0.00	\$0.00	\$0.00	\$0.00	\$0.00	\$0.00
DAM LOSSES	\$0.00	\$0.00	\$0.00	\$0.00	\$0.00	\$0.00	\$0.00
BALANCING ENERGY	\$0.00	\$0.00	\$0.00	\$0.00	\$0.00	\$0.00	\$0.00
BALANCING LOSSES	\$0.00	\$0.00	\$0.00	\$0.00	\$0.00	\$0.00	\$0.00
BALANCING CONGESTION	\$0.00	\$0.00	\$0.00	\$0.00	\$0.00	\$0.00	\$0.00
FAILED IMPORT CHARGE	\$0.00	\$0.00	(\$0.05)	\$0.03	(\$0.04)	\$0.00	\$0.00

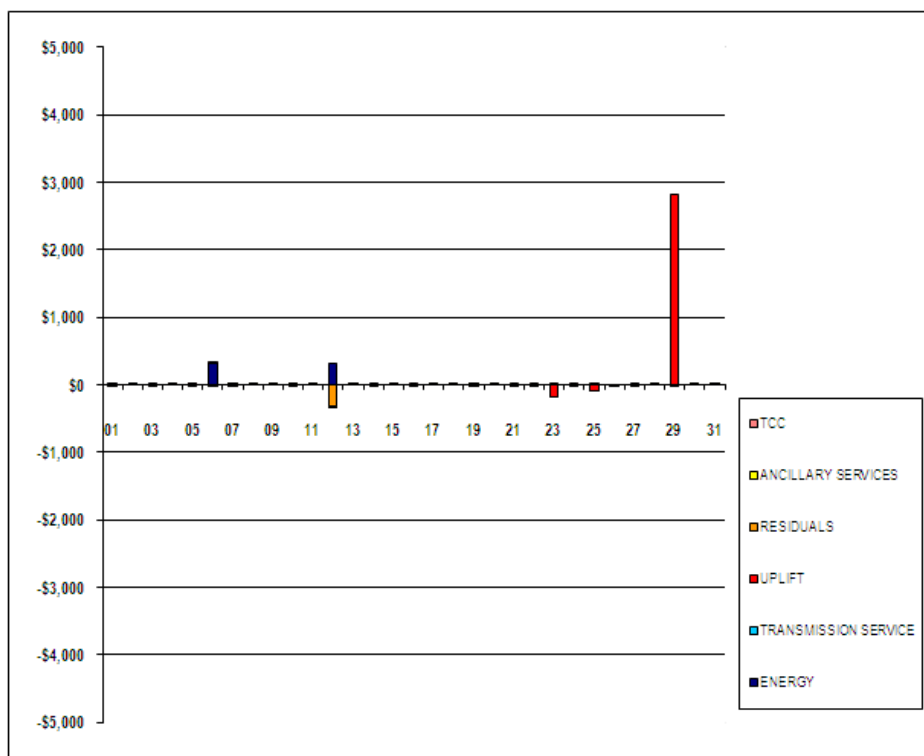


FOR DISCUSSION PURPOSES ONLY

SETTLEMENTS REPORT
January 2010 Close-Out Settlement
October 6, 2010

Close-Out Settlement – Market Costs Delta Analysis

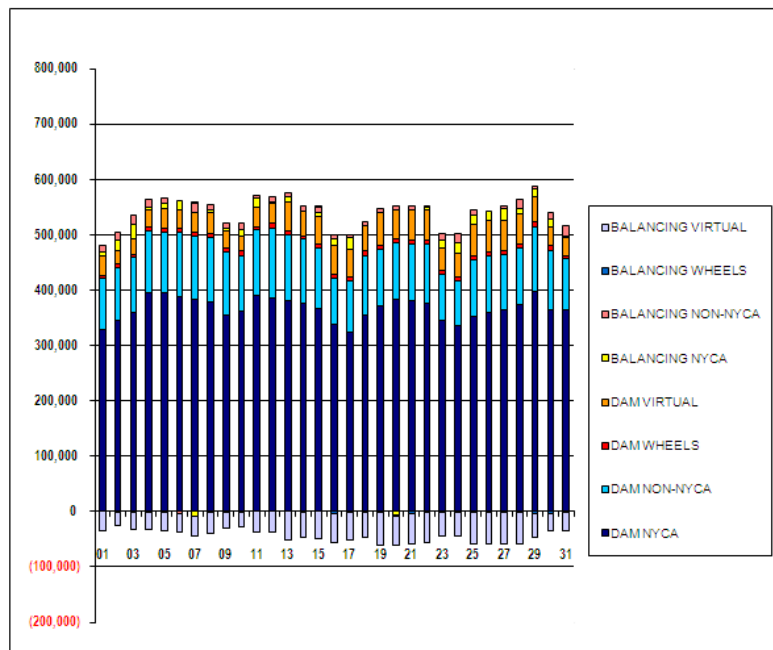
	MONDAY	TUESDAY	WEDNESDAY	THURSDAY	FRIDAY	SATURDAY	SUNDAY
					1	2	3
ENERGY					\$0.04	\$0.13	\$0.01
TRANSMISSION SERVICE					\$0.00	\$0.01	\$0.00
UPLIFT					\$0.00	\$0.00	\$0.00
RESIDUALS					(\$0.05)	\$0.00	(\$0.03)
ANCILLARY SERVICES					\$0.00	\$0.00	\$0.00
TCC					\$0.00	\$0.00	\$0.00
	4	5	6	7	8	9	10
ENERGY	\$0.18	\$0.28	\$314.89	(\$0.12)	\$0.06	\$0.01	\$0.08
TRANSMISSION SERVICE	\$0.00	\$0.00	\$0.00	\$0.03	\$0.03	\$0.02	\$0.00
UPLIFT	\$0.00	\$0.01	\$0.01	(\$0.05)	\$0.00	\$0.00	(\$0.01)
RESIDUALS	\$0.09	(\$0.03)	(\$23.48)	\$0.01	\$0.01	\$0.02	\$0.05
ANCILLARY SERVICES	\$0.00	\$0.00	\$0.00	\$0.04	\$0.05	\$0.02	\$0.01
TCC	\$0.00	\$0.00	\$0.00	\$0.00	\$0.00	\$0.00	\$0.00
	11	12	13	14	15	16	17
ENERGY	\$0.08	\$312.60	\$0.16	\$0.19	\$0.15	(\$0.02)	\$0.09
TRANSMISSION SERVICE	\$0.02	\$0.00	\$0.01	\$0.00	\$0.00	\$0.00	\$0.01
UPLIFT	\$0.04	(\$0.05)	\$0.00	\$0.00	\$0.00	\$0.05	\$0.00
RESIDUALS	\$0.06	(\$312.78)	\$0.01	(\$0.02)	\$0.01	\$0.00	\$0.00
ANCILLARY SERVICES	\$0.02	(\$2.63)	\$0.00	\$0.00	\$0.00	\$0.00	\$0.01
TCC	\$0.00	\$0.00	\$0.00	\$0.00	\$0.00	\$0.00	\$0.00
	18	19	20	21	22	23	24
ENERGY	\$0.06	(\$0.15)	\$0.32	(\$0.03)	(\$0.13)	(\$0.16)	(\$0.17)
TRANSMISSION SERVICE	\$0.00	\$0.01	\$0.02	\$0.00	\$0.00	\$0.00	\$0.00
UPLIFT	\$0.00	\$0.00	\$0.00	\$0.00	(\$0.05)	(\$174.94)	\$0.01
RESIDUALS	\$0.01	(\$0.01)	\$0.00	(\$0.06)	\$0.03	\$0.03	\$0.00
ANCILLARY SERVICES	\$0.00	\$0.02	\$0.03	\$0.02	\$0.00	\$0.00	\$0.00
TCC	\$0.00	\$0.00	\$0.00	\$0.00	\$0.00	\$0.00	\$0.00
	25	26	27	28	29	30	31
ENERGY	(\$0.06)	(\$0.15)	\$0.03	\$0.12	(\$0.10)	\$0.03	\$0.10
TRANSMISSION SERVICE	\$0.00	\$0.00	\$0.00	\$0.01	\$0.00	\$0.05	\$0.00
UPLIFT	(\$98.99)	\$0.00	\$0.00	\$0.01	\$2,823.76	\$0.00	\$0.05
RESIDUALS	\$0.00	\$0.00	(\$0.05)	\$0.03	(\$0.04)	\$0.00	\$0.00
ANCILLARY SERVICES	\$0.01	\$0.00	\$0.00	\$0.02	\$0.00	\$0.08	\$0.01
TCC	\$0.00	\$0.00	\$0.00	\$0.00	\$0.00	\$0.00	\$0.00



SETTLEMENTS REPORT
January 2010 Close-Out Settlement
October 6, 2010

4-Month Settlement Adjustment – Market Supply Analysis

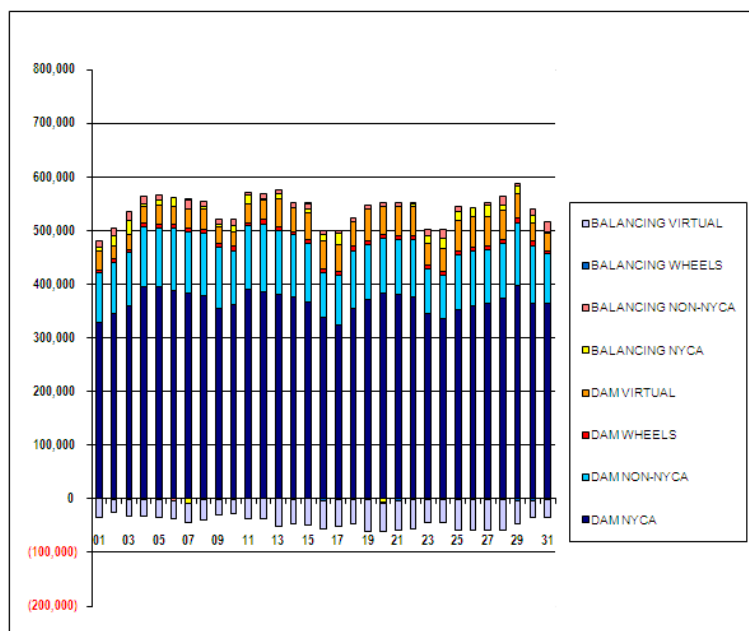
	MONDAY	TUESDAY	WEDNESDAY	THURSDAY	FRIDAY	SATURDAY	SUNDAY
					1	2	3
DAM NYCA					329,423	345,271	360,358
DAM NON-NYCA					91,308	95,350	98,646
DAM WHEELS					5,751	6,295	4,086
DAM VIRTUAL					35,407	23,690	30,402
BALANCING NYCA					7,334	18,479	25,056
BALANCING NON-NYCA					10,390	14,802	17,213
BALANCING WHEELS					(275)	(918)	(1,140)
BALANCING VIRTUAL					(35,407)	(23,690)	(30,402)
	4	5	6	7	8	9	10
DAM NYCA	395,302	395,630	387,925	384,176	378,480	354,124	361,331
DAM NON-NYCA	111,448	107,538	115,711	113,748	116,130	114,882	100,443
DAM WHEELS	7,210	8,458	8,004	6,577	7,189	7,794	9,017
DAM VIRTUAL	30,315	34,444	32,135	35,477	38,894	29,595	26,012
BALANCING NYCA	5,894	9,757	17,860	(9,850)	2,901	5,945	12,817
BALANCING NON-NYCA	14,703	11,366	(3,453)	15,926	11,060	9,223	11,622
BALANCING WHEELS	(1,087)	(1,383)	(1,137)	337	(559)	(819)	(1,712)
BALANCING VIRTUAL	(30,315)	(34,444)	(32,135)	(35,477)	(38,894)	(29,595)	(26,012)
	11	12	13	14	15	16	17
DAM NYCA	390,603	386,676	380,203	376,665	365,464	338,242	323,853
DAM NON-NYCA	117,949	125,016	120,313	114,976	111,111	83,201	92,842
DAM WHEELS	5,138	8,655	7,308	5,147	6,583	6,503	6,844
DAM VIRTUAL	36,854	36,775	51,481	46,047	49,979	53,550	50,000
BALANCING NYCA	14,682	778	9,193	634	7,504	11,156	20,364
BALANCING NON-NYCA	6,047	9,363	7,294	8,080	9,591	6,897	4,715
BALANCING WHEELS	(469)	(450)	(452)	(705)	32	(2,858)	(1,505)
BALANCING VIRTUAL	(36,854)	(36,775)	(51,481)	(46,047)	(49,979)	(53,550)	(50,000)
	18	19	20	21	22	23	24
DAM NYCA	353,843	370,889	384,315	381,716	376,162	345,847	336,561
DAM NON-NYCA	108,452	101,808	102,040	101,894	107,634	83,307	80,853
DAM WHEELS	8,226	7,364	6,887	6,405	6,605	5,494	5,422
DAM VIRTUAL	45,425	59,123	51,860	55,821	54,855	41,931	42,816
BALANCING NYCA	1,094	9	(6,868)	(422)	3,472	13,277	19,027
BALANCING NON-NYCA	6,684	8,842	6,967	6,606	719	12,951	17,062
BALANCING WHEELS	(2,444)	(2,165)	(2,837)	(2,608)	(2,221)	(2,551)	(1,340)
BALANCING VIRTUAL	(45,425)	(59,123)	(51,860)	(55,821)	(54,855)	(41,931)	(42,816)
	25	26	27	28	29	30	31
DAM NYCA	352,432	359,338	364,240	373,090	397,572	364,650	364,521
DAM NON-NYCA	102,095	103,029	99,717	103,326	116,102	106,599	92,952
DAM WHEELS	5,941	6,348	6,418	5,741	9,542	9,522	4,930
DAM VIRTUAL	58,111	56,079	56,076	55,737	44,336	32,391	32,592
BALANCING NYCA	15,972	16,865	21,729	8,379	14,796	15,275	2,763
BALANCING NON-NYCA	9,002	(353)	4,143	16,692	5,964	11,903	17,984
BALANCING WHEELS	(1,162)	(1,360)	(2,570)	(2,023)	(3,081)	(3,810)	(1,150)
BALANCING VIRTUAL	(58,111)	(56,079)	(56,076)	(55,737)	(44,336)	(32,391)	(32,592)



SETTLEMENTS REPORT
January 2010 Close-Out Settlement
October 6, 2010

Close-Out Settlement – Market Supply Analysis

	MONDAY	TUESDAY	WEDNESDAY	THURSDAY	FRIDAY	SATURDAY	SUNDAY
					1	2	3
DAM NYCA					329,423	345,271	360,358
DAM NON-NYCA					91,308	95,350	98,846
DAM WHEELS					5,751	6,295	4,086
DAM VIRTUAL					35,407	23,690	30,402
BALANCING NYCA					7,334	18,479	25,056
BALANCING NON-NYCA					10,390	14,802	17,213
BALANCING WHEELS					(275)	(918)	(1,140)
BALANCING VIRTUAL					(35,407)	(23,690)	(30,402)
	4	5	6	7	8	9	10
DAM NYCA	395,302	395,630	387,925	384,176	378,490	354,124	361,331
DAM NON-NYCA	111,448	107,538	115,711	113,746	116,130	114,982	100,443
DAM WHEELS	7,210	8,458	8,004	6,577	7,189	7,794	9,017
DAM VIRTUAL	30,315	34,444	32,135	35,477	38,894	29,595	26,012
BALANCING NYCA	5,684	9,757	17,860	(9,850)	2,901	5,945	12,817
BALANCING NON-NYCA	14,703	11,366	(3,453)	15,926	11,060	9,223	11,622
BALANCING WHEELS	(1,067)	(1,363)	(1,137)	337	(559)	(819)	(1,712)
BALANCING VIRTUAL	(30,315)	(34,444)	(32,135)	(35,477)	(38,894)	(29,595)	(26,012)
	11	12	13	14	15	16	17
DAM NYCA	390,603	386,676	380,203	376,665	365,464	338,242	323,853
DAM NON-NYCA	117,949	125,016	120,313	114,976	111,111	83,201	92,842
DAM WHEELS	5,138	8,655	7,308	5,147	6,563	6,503	6,844
DAM VIRTUAL	36,854	36,775	51,481	46,047	49,979	53,550	50,000
BALANCING NYCA	14,682	778	9,193	634	7,504	11,156	20,364
BALANCING NON-NYCA	6,047	9,363	7,284	8,080	9,591	6,897	4,715
BALANCING WHEELS	(469)	(450)	(452)	(705)	32	(2,858)	(1,505)
BALANCING VIRTUAL	(36,854)	(36,775)	(51,481)	(46,047)	(49,979)	(53,550)	(50,000)
	18	19	20	21	22	23	24
DAM NYCA	353,843	370,889	384,315	381,716	376,162	345,847	336,561
DAM NON-NYCA	106,452	101,608	102,040	101,694	107,634	83,307	80,853
DAM WHEELS	8,226	7,364	6,887	6,405	6,605	5,494	5,422
DAM VIRTUAL	45,425	59,123	51,860	55,821	54,855	41,931	42,818
BALANCING NYCA	1,094	9	(6,869)	(422)	3,472	13,277	19,027
BALANCING NON-NYCA	6,684	8,842	6,967	6,606	719	12,951	17,062
BALANCING WHEELS	(2,444)	(2,165)	(2,837)	(2,608)	(2,221)	(2,551)	(1,340)
BALANCING VIRTUAL	(45,425)	(59,123)	(51,860)	(55,821)	(54,855)	(41,931)	(42,818)
	25	26	27	28	29	30	31
DAM NYCA	352,432	359,338	364,240	373,090	397,572	364,650	364,521
DAM NON-NYCA	102,095	103,029	99,717	103,326	116,102	106,599	92,952
DAM WHEELS	5,941	6,348	6,418	5,741	9,542	9,522	4,930
DAM VIRTUAL	58,111	56,079	56,076	55,737	44,396	32,391	32,592
BALANCING NYCA	15,972	16,865	21,729	8,379	14,798	15,275	2,783
BALANCING NON-NYCA	9,002	(353)	4,143	16,692	5,964	11,903	17,984
BALANCING WHEELS	(1,162)	(1,360)	(2,570)	(2,023)	(3,081)	(3,610)	(1,150)
BALANCING VIRTUAL	(58,111)	(56,079)	(56,076)	(55,737)	(44,396)	(32,391)	(32,592)



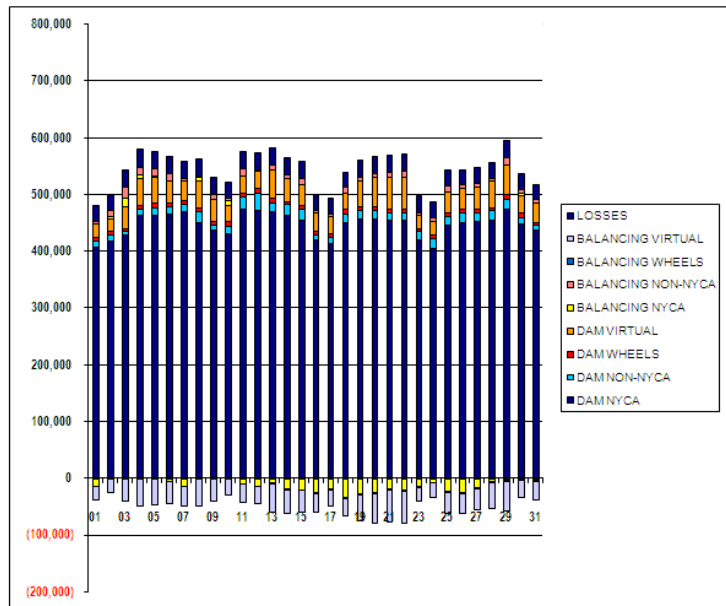
SETTLEMENTS REPORT

January 2010 Close-Out Settlement

October 6, 2010

4-Month Settlement Adjustment – Market Withdrawals Analysis

	MONDAY	TUESDAY	WEDNESDAY	THURSDAY	FRIDAY	SATURDAY	SUNDAY
					1	2	3
DAM NYCA					407,217	419,226	428,245
DAM NON-NYCA					11,596	9,735	7,771
DAM WHEELS					5,751	6,295	4,086
DAM VIRTUAL					24,702	22,703	39,539
BALANCING NYCA					(13,417)	2,883	15,441
BALANCING NON-NYCA					2,885	11,382	16,153
BALANCING WHEELS					(275)	(918)	(1,140)
BALANCING VIRTUAL					(24,702)	(22,703)	(39,539)
UFE/LOSSES					29,618	29,343	30,129
	4	5	6	7	8	9	10
DAM NYCA	483,019	484,307	486,158	489,890	451,072	437,726	431,267
DAM NON-NYCA	11,242	13,225	12,250	13,544	18,399	8,261	13,641
DAM WHEELS	7,210	8,458	8,004	6,577	7,189	7,794	9,017
DAM VIRTUAL	47,580	45,352	38,461	34,423	47,743	38,355	27,986
BALANCING NYCA	6,909	2,417	(4,789)	(14,200)	5,452	917	7,551
BALANCING NON-NYCA	13,098	13,128	13,552	4,068	3,308	7,646	4,571
BALANCING WHEELS	(1,067)	(1,383)	(1,137)	337	(559)	(819)	(1,712)
BALANCING VIRTUAL	(47,580)	(45,352)	(38,461)	(34,423)	(47,743)	(38,355)	(27,986)
UFE/LOSSES	31,632	30,306	29,835	29,811	29,624	29,163	28,647
	11	12	13	14	15	16	17
DAM NYCA	475,331	473,530	471,326	464,462	455,419	419,674	415,094
DAM NON-NYCA	21,512	28,342	14,635	18,786	18,487	9,964	10,353
DAM WHEELS	5,138	8,655	7,306	5,147	6,563	6,503	6,844
DAM VIRTUAL	32,161	30,271	49,534	40,902	38,363	32,548	28,979
BALANCING NYCA	(8,979)	(13,863)	(8,357)	(18,726)	(21,227)	(23,639)	(18,657)
BALANCING NON-NYCA	12,572	3,192	9,622	5,218	10,724	4,582	5,673
BALANCING WHEELS	(469)	(450)	(452)	(705)	32	(2,858)	(1,505)
BALANCING VIRTUAL	(32,161)	(30,271)	(49,534)	(40,902)	(38,363)	(32,548)	(28,979)
UFE/LOSSES	29,408	30,441	29,334	29,972	29,161	28,303	28,260
	18	19	20	21	22	23	24
DAM NYCA	451,649	457,068	458,850	454,951	455,648	420,139	406,529
DAM NON-NYCA	13,870	15,399	15,658	13,507	12,818	15,055	16,954
DAM WHEELS	8,226	7,364	6,887	6,405	6,605	5,494	5,422
DAM VIRTUAL	28,863	45,172	51,081	55,655	55,656	23,571	24,521
BALANCING NYCA	(33,682)	(28,697)	(24,158)	(17,766)	(21,209)	(13,574)	(6,964)
BALANCING NON-NYCA	10,182	6,546	7,455	9,630	10,058	4,605	6,705
BALANCING WHEELS	(2,444)	(2,165)	(2,837)	(2,608)	(2,221)	(2,551)	(1,340)
BALANCING VIRTUAL	(28,863)	(45,172)	(51,081)	(55,655)	(55,656)	(23,571)	(24,521)
UFE/LOSSES	27,452	29,136	30,086	29,017	30,340	28,658	27,810
	25	26	27	28	29	30	31
DAM NYCA	445,740	451,424	452,227	454,199	473,696	448,951	437,880
DAM NON-NYCA	16,875	17,763	16,880	17,894	18,213	10,570	8,795
DAM WHEELS	5,941	6,348	6,418	5,741	9,542	9,522	4,930
DAM VIRTUAL	36,885	35,539	37,084	46,097	50,984	30,383	32,912
BALANCING NYCA	(23,292)	(24,874)	(19,022)	(4,671)	(2,014)	2,918	(3,398)
BALANCING NON-NYCA	10,887	6,050	6,834	4,844	12,534	6,343	6,981
BALANCING WHEELS	(1,182)	(1,380)	(2,570)	(2,023)	(3,081)	(3,610)	(1,150)
BALANCING VIRTUAL	(36,885)	(35,539)	(37,084)	(46,097)	(50,984)	(30,383)	(32,912)
UFE/LOSSES	27,963	27,624	28,941	28,083	30,505	29,068	27,174



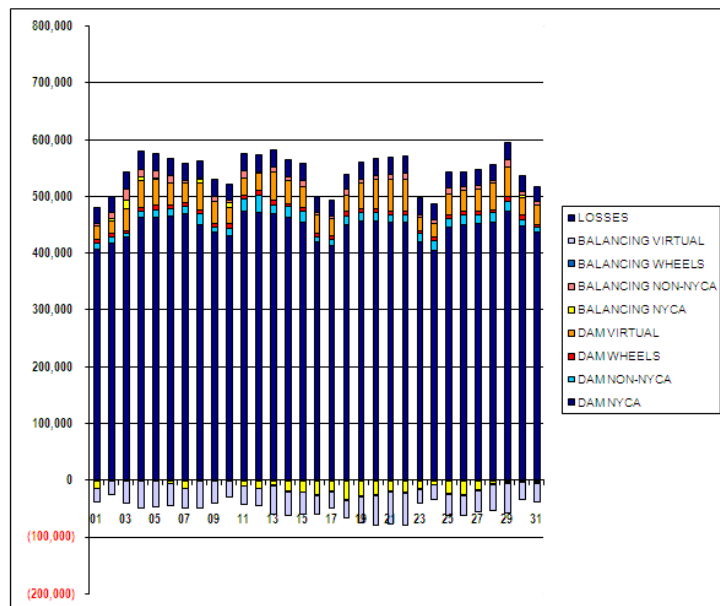
SETTLEMENTS REPORT

January 2010 Close-Out Settlement

October 6, 2010

Close-Out Settlement – Market Withdrawals Analysis

	MONDAY	TUESDAY	WEDNESDAY	THURSDAY	FRIDAY	SATURDAY	SUNDAY
					1	2	3
DAM NYCA					407,217	419,226	428,245
DAM NON-NYCA					11,596	9,735	7,771
DAM WHEELS					5,751	6,295	4,086
DAM VIRTUAL					24,702	22,703	39,539
BALANCING NYCA					(13,417)	2,883	15,441
BALANCING NON-NYCA					2,885	11,382	16,153
BALANCING WHEELS					(275)	(918)	(1,140)
BALANCING VIRTUAL					(24,702)	(22,703)	(39,539)
UFE/LOSSES					29,618	29,343	30,129
	4	5	6	7	8	9	10
DAM NYCA	483,019	484,307	486,158	489,890	451,072	437,726	431,267
DAM NON-NYCA	11,242	13,225	12,250	13,544	18,399	8,261	13,641
DAM WHEELS	7,210	8,458	8,004	6,577	7,189	7,794	9,017
DAM VIRTUAL	47,580	45,352	38,461	34,423	47,743	38,355	27,986
BALANCING NYCA	6,909	2,417	(4,789)	(14,200)	5,452	917	7,551
BALANCING NON-NYCA	13,098	13,128	13,552	4,068	3,308	7,646	4,571
BALANCING WHEELS	(1,067)	(1,383)	(1,137)	337	(559)	(819)	(1,712)
BALANCING VIRTUAL	(47,580)	(45,352)	(38,461)	(34,423)	(47,743)	(38,355)	(27,986)
UFE/LOSSES	31,632	30,306	29,835	29,811	29,624	29,163	28,647
	11	12	13	14	15	16	17
DAM NYCA	475,331	473,530	471,326	464,462	455,419	419,674	415,094
DAM NON-NYCA	21,512	28,342	14,635	18,786	18,487	9,964	10,353
DAM WHEELS	5,138	8,655	7,306	5,147	6,563	6,503	6,844
DAM VIRTUAL	32,161	30,271	49,534	40,902	38,363	32,548	28,979
BALANCING NYCA	(8,979)	(13,863)	(8,357)	(18,726)	(21,227)	(23,639)	(18,657)
BALANCING NON-NYCA	12,572	3,192	9,622	5,218	10,724	4,582	5,673
BALANCING WHEELS	(469)	(450)	(452)	(705)	32	(2,858)	(1,505)
BALANCING VIRTUAL	(32,161)	(30,271)	(49,534)	(40,902)	(38,363)	(32,548)	(28,979)
UFE/LOSSES	29,408	30,441	29,334	29,972	29,161	28,303	28,260
	18	19	20	21	22	23	24
DAM NYCA	451,649	457,068	458,850	454,951	455,648	420,139	406,529
DAM NON-NYCA	13,870	15,399	15,658	13,507	12,818	15,055	16,954
DAM WHEELS	8,226	7,364	6,887	6,405	6,605	5,494	5,422
DAM VIRTUAL	28,863	45,172	51,081	55,655	55,656	23,571	24,521
BALANCING NYCA	(33,682)	(28,897)	(24,158)	(17,766)	(21,209)	(13,574)	(6,964)
BALANCING NON-NYCA	10,182	6,546	7,455	9,630	10,058	4,605	6,705
BALANCING WHEELS	(2,444)	(2,165)	(2,837)	(2,608)	(2,221)	(2,551)	(1,340)
BALANCING VIRTUAL	(28,863)	(45,172)	(51,081)	(55,655)	(55,656)	(23,571)	(24,521)
UFE/LOSSES	27,452	29,136	30,086	29,017	30,340	28,658	27,810
	25	26	27	28	29	30	31
DAM NYCA	445,740	451,424	452,227	454,199	473,696	448,951	437,880
DAM NON-NYCA	16,875	17,763	16,880	17,894	18,213	10,570	8,795
DAM WHEELS	5,941	6,348	6,418	5,741	9,542	9,522	4,930
DAM VIRTUAL	36,885	35,539	37,084	46,097	50,984	30,383	32,912
BALANCING NYCA	(23,292)	(24,874)	(19,022)	(4,671)	(2,014)	2,918	(3,398)
BALANCING NON-NYCA	10,887	6,050	6,834	4,844	12,534	6,343	6,981
BALANCING WHEELS	(1,182)	(1,380)	(2,570)	(2,023)	(3,081)	(3,610)	(1,150)
BALANCING VIRTUAL	(36,885)	(35,539)	(37,084)	(46,097)	(50,984)	(30,383)	(32,912)
UFE/LOSSES	27,963	27,624	28,941	28,083	30,505	29,097	27,174

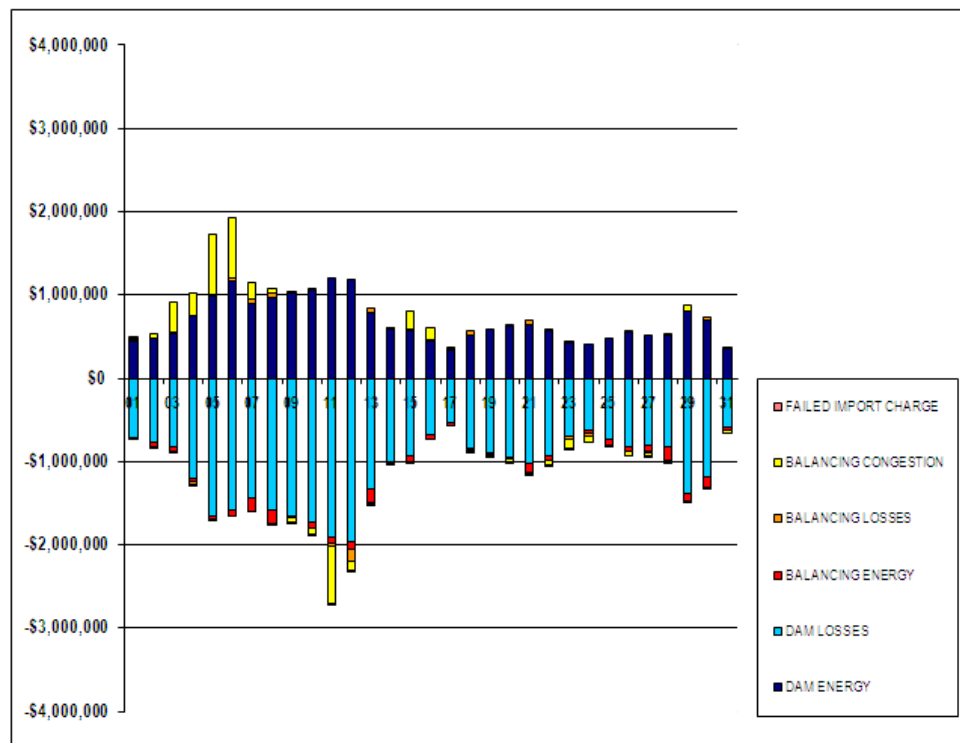


FOR DISCUSSION PURPOSES ONLY

SETTLEMENTS REPORT
January 2010 Close-Out Settlement
October 6, 2010

4-Month Settlement Adjustment – Market Residuals Analysis

	MONDAY	TUESDAY	WEDNESDAY	THURSDAY	FRIDAY	SATURDAY	SUNDAY
					1	2	3
DAM ENERGY					\$436,472.21	\$481,030.18	\$533,991.51
DAM LOSSES					(\$709,765.54)	(\$772,732.52)	(\$817,220.90)
BALANCING ENERGY					\$31,009.75	(\$51,686.12)	(\$55,361.97)
BALANCING LOSSES					\$14,580.89	(\$2,093.82)	\$11,934.19
BALANCING CONGESTION					\$19,379.91	\$57,799.92	\$368,242.11
FAILED IMPORT CHARGE					(\$3,753.60)	\$0.00	(\$14,630.91)
	4	5	6	7	8	9	10
DAM ENERGY	\$757,394.03	\$979,283.23	\$1,169,358.28	\$889,847.41	\$977,302.03	\$1,022,312.87	\$1,060,783.97
DAM LOSSES	(\$1,199,539.24)	(\$1,656,080.82)	(\$1,583,803.64)	(\$1,447,482.59)	(\$1,586,056.38)	(\$1,649,850.74)	(\$1,729,770.81)
BALANCING ENERGY	(\$44,094.28)	(\$28,889.25)	(\$68,213.18)	(\$159,718.52)	(\$166,196.20)	(\$20,994.36)	(\$72,849.01)
BALANCING LOSSES	(\$24,866.71)	\$26,688.83	\$32,657.85	\$65,963.81	\$46,084.15	\$20,869.11	\$6,047.76
BALANCING CONGESTION	\$256,376.64	\$726,859.34	\$730,217.27	\$185,878.65	\$46,329.25	(\$56,085.30)	(\$65,569.25)
FAILED IMPORT CHARGE	(\$20,961.77)	(\$1,157.33)	\$0.00	\$0.00	(\$4,891.00)	(\$45.18)	(\$289.13)
	11	12	13	14	15	16	17
DAM ENERGY	\$1,208,496.63	\$1,184,084.62	\$792,713.28	\$586,218.92	\$568,634.79	\$439,028.13	\$339,237.09
DAM LOSSES	(\$1,906,672.66)	(\$1,959,866.32)	(\$1,337,232.67)	(\$996,138.82)	(\$932,177.26)	(\$686,248.70)	(\$540,711.28)
BALANCING ENERGY	(\$81,096.65)	(\$93,277.37)	(\$150,158.40)	\$2,728.34	(\$73,838.70)	(\$53,860.66)	(\$30,354.19)
BALANCING LOSSES	(\$27,864.22)	(\$140,452.25)	\$52,456.29	\$9,896.37	\$25,680.59	\$29,220.64	\$10,465.02
BALANCING CONGESTION	(\$697,730.86)	(\$119,926.18)	(\$28,237.93)	(\$22,995.45)	\$219,145.48	\$133,593.88	\$5,452.45
FAILED IMPORT CHARGE	(\$12,353.99)	(\$7,684.67)	(\$13.31)	(\$1,332.92)	(\$2,593.10)	\$0.00	\$0.00
	18	19	20	21	22	23	24
DAM ENERGY	\$524,198.82	\$596,490.82	\$629,144.52	\$644,395.54	\$576,629.83	\$430,254.75	\$416,190.09
DAM LOSSES	(\$840,966.01)	(\$896,457.58)	(\$947,289.13)	(\$1,023,680.69)	(\$923,988.34)	(\$696,891.49)	(\$633,149.01)
BALANCING ENERGY	(\$24,442.23)	(\$9,318.00)	(\$22,314.98)	(\$103,090.49)	(\$64,600.58)	\$7,431.17	(\$31,376.34)
BALANCING LOSSES	\$43,930.25	(\$21,441.68)	\$15,114.33	\$52,748.01	\$6,024.20	(\$31,845.41)	(\$30,332.08)
BALANCING CONGESTION	(\$12,343.79)	(\$10,002.07)	(\$29,838.99)	(\$24,259.31)	(\$53,202.76)	(\$109,283.82)	(\$68,053.18)
FAILED IMPORT CHARGE	(\$1,413.79)	(\$18.36)	(\$181.60)	(\$194.51)	(\$3,407.97)	(\$1,116.78)	\$0.00
	25	26	27	28	29	30	31
DAM ENERGY	\$479,344.49	\$549,541.39	\$513,851.29	\$523,469.87	\$796,991.90	\$696,924.69	\$353,700.61
DAM LOSSES	(\$741,565.40)	(\$829,349.95)	(\$800,152.34)	(\$825,575.19)	(\$1,382,501.33)	(\$1,185,068.06)	(\$583,372.15)
BALANCING ENERGY	(\$60,953.09)	(\$50,851.48)	(\$78,091.31)	(\$157,128.97)	(\$88,510.64)	(\$125,541.33)	(\$43,234.23)
BALANCING LOSSES	(\$6,016.42)	\$17,477.69	(\$17,285.69)	\$15,730.36	\$16,247.90	\$44,845.26	\$2,622.43
BALANCING CONGESTION	(\$18,953.42)	(\$56,002.03)	(\$30,388.01)	(\$30,137.07)	\$70,035.60	(\$10,452.44)	(\$32,388.19)
FAILED IMPORT CHARGE	\$0.00	\$0.00	(\$1,187.29)	(\$4,205.84)	(\$126.81)	\$0.00	\$0.00

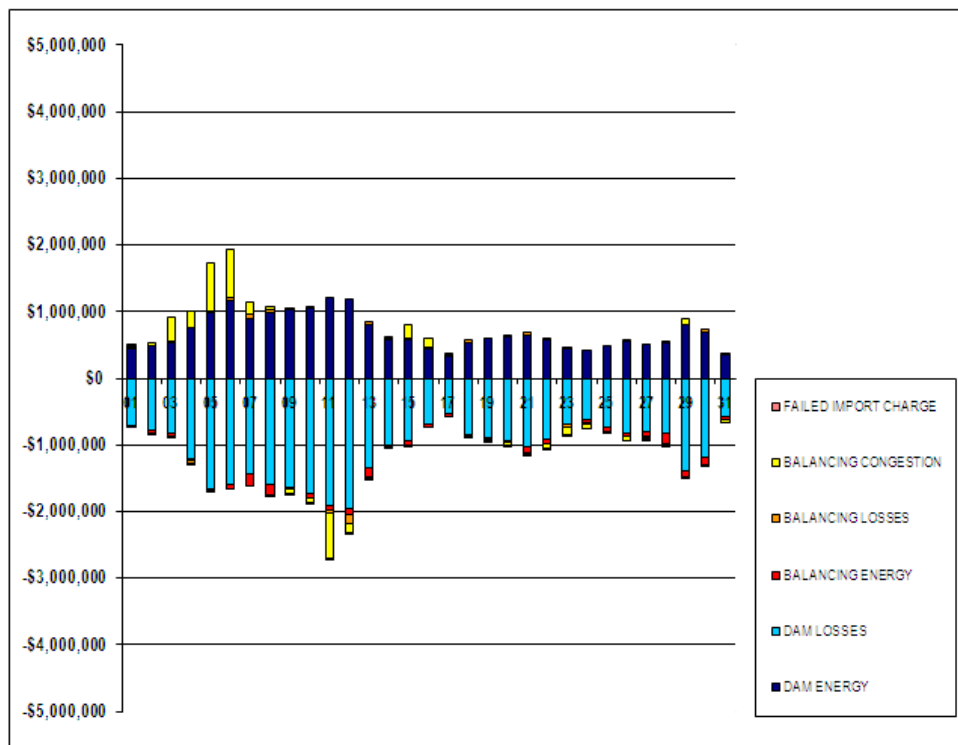


FOR DISCUSSION PURPOSES ONLY

SETTLEMENTS REPORT
January 2010 Close-Out Settlement
October 6, 2010

Close-Out Settlement – Market Residuals Analysis

	MONDAY	TUESDAY	WEDNESDAY	THURSDAY	FRIDAY	SATURDAY	SUNDAY
					1	2	3
DAM ENERGY					\$436,472.21	\$481,030.18	\$533,991.51
DAM LOSSES					(\$709,765.54)	(\$772,732.52)	(\$817,220.90)
BALANCING ENERGY					\$31,009.75	(\$51,686.12)	(\$55,361.97)
BALANCING LOSSES					\$14,580.89	(\$2,093.82)	\$11,934.19
BALANCING CONGESTION					\$19,379.91	\$57,799.92	\$368,242.11
FAILED IMPORT CHARGE					(\$3,753.65)	\$0.00	(\$14,630.94)
	4	5	6	7	8	9	10
DAM ENERGY	\$757,394.03	\$979,283.23	\$1,169,358.28	\$889,847.42	\$977,302.04	\$1,022,312.87	\$1,060,783.97
DAM LOSSES	(\$1,199,539.24)	(\$1,656,080.82)	(\$1,583,803.64)	(\$1,447,482.59)	(\$1,586,056.38)	(\$1,649,850.73)	(\$1,729,770.81)
BALANCING ENERGY	(\$44,094.28)	(\$28,889.25)	(\$68,216.72)	(\$159,718.52)	(\$166,186.20)	(\$20,994.36)	(\$72,849.01)
BALANCING LOSSES	(\$24,866.71)	\$26,688.83	\$32,637.91	\$65,963.81	\$46,084.15	\$20,869.11	\$6,047.76
BALANCING CONGESTION	\$256,376.64	\$726,859.34	\$730,217.27	\$185,878.65	\$46,329.25	(\$56,085.30)	(\$65,569.25)
FAILED IMPORT CHARGE	(\$20,961.68)	(\$1,157.36)	\$0.00	\$0.00	(\$4,891.00)	(\$45.17)	(\$289.08)
	11	12	13	14	15	16	17
DAM ENERGY	\$1,208,496.63	\$1,184,084.62	\$792,713.28	\$586,218.92	\$568,634.79	\$439,028.13	\$339,237.09
DAM LOSSES	(\$1,906,672.66)	(\$1,959,866.32)	(\$1,337,232.67)	(\$996,138.82)	(\$932,177.26)	(\$686,248.70)	(\$540,711.28)
BALANCING ENERGY	(\$81,096.65)	(\$93,587.80)	(\$150,158.40)	\$2,728.34	(\$73,838.70)	(\$53,860.66)	(\$30,354.19)
BALANCING LOSSES	(\$27,864.21)	(\$140,450.75)	\$52,456.29	\$9,896.37	\$25,680.59	\$29,220.64	\$10,465.02
BALANCING CONGESTION	(\$697,730.85)	(\$119,929.99)	(\$28,237.93)	(\$22,995.45)	\$219,145.48	\$133,593.88	\$5,452.45
FAILED IMPORT CHARGE	(\$12,353.95)	(\$7,684.71)	(\$13.30)	(\$1,332.64)	(\$2,593.09)	\$0.00	\$0.00
	18	19	20	21	22	23	24
DAM ENERGY	\$524,198.82	\$596,490.82	\$629,144.52	\$644,395.54	\$576,629.83	\$430,254.75	\$416,190.09
DAM LOSSES	(\$840,966.01)	(\$896,457.58)	(\$947,289.13)	(\$1,023,680.69)	(\$923,988.34)	(\$696,891.49)	(\$633,149.01)
BALANCING ENERGY	(\$24,442.23)	(\$9,318.00)	(\$22,314.98)	(\$103,090.49)	(\$64,600.58)	\$7,431.17	(\$31,376.34)
BALANCING LOSSES	\$43,930.25	(\$21,441.68)	\$15,114.33	\$52,748.01	\$6,024.20	(\$31,845.41)	(\$30,332.08)
BALANCING CONGESTION	(\$12,343.79)	(\$10,002.07)	(\$29,838.99)	(\$24,259.31)	(\$53,202.76)	(\$109,283.82)	(\$68,053.18)
FAILED IMPORT CHARGE	(\$1,413.78)	(\$18.37)	(\$181.60)	(\$194.57)	(\$3,407.94)	(\$1,116.75)	\$0.00
	25	26	27	28	29	30	31
DAM ENERGY	\$479,344.49	\$549,541.39	\$513,851.29	\$523,469.87	\$796,991.90	\$696,924.69	\$353,700.61
DAM LOSSES	(\$741,565.40)	(\$829,349.95)	(\$800,152.34)	(\$825,575.19)	(\$1,382,501.33)	(\$1,185,068.06)	(\$583,372.15)
BALANCING ENERGY	(\$60,953.09)	(\$50,851.48)	(\$78,091.31)	(\$157,128.97)	(\$88,510.64)	(\$125,541.33)	(\$43,234.23)
BALANCING LOSSES	(\$6,016.42)	\$17,477.69	(\$17,285.69)	\$15,730.36	\$16,247.90	\$44,845.26	\$2,622.43
BALANCING CONGESTION	(\$18,953.42)	(\$56,002.03)	(\$30,388.01)	(\$30,137.07)	\$70,035.60	(\$10,452.44)	(\$32,388.19)
FAILED IMPORT CHARGE	\$0.00	\$0.00	(\$1,187.34)	(\$4,205.81)	(\$126.85)	\$0.00	\$0.00

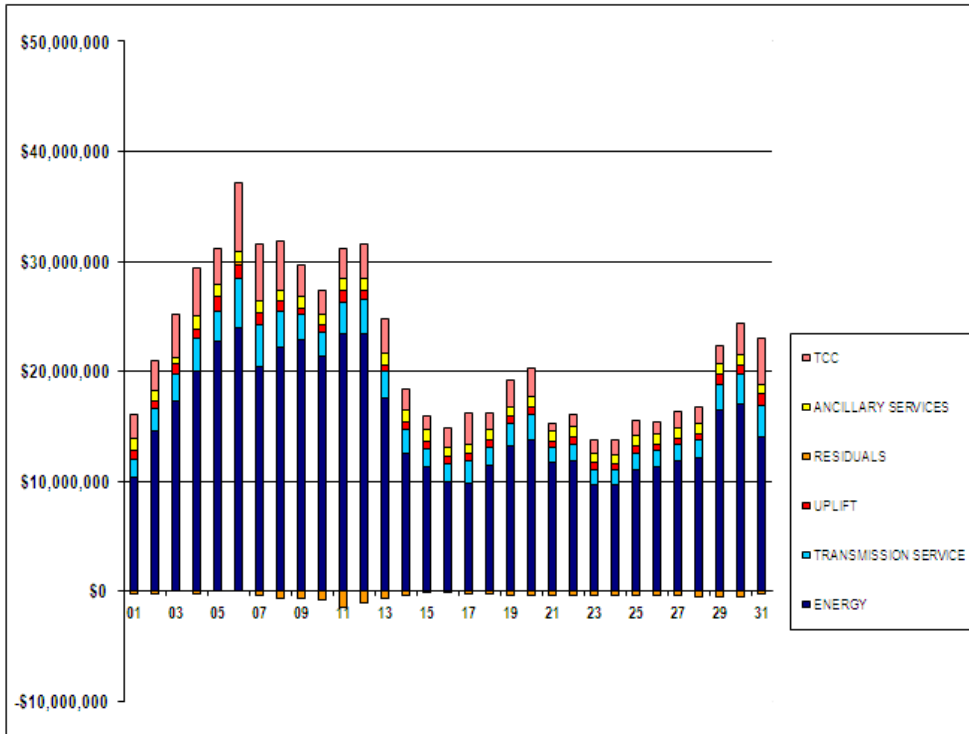


FOR DISCUSSION PURPOSES ONLY

SETTLEMENTS REPORT
January 2010 Close-Out Settlement
October 6, 2010

4-Month Settlement Adjustment – Market Costs Analysis

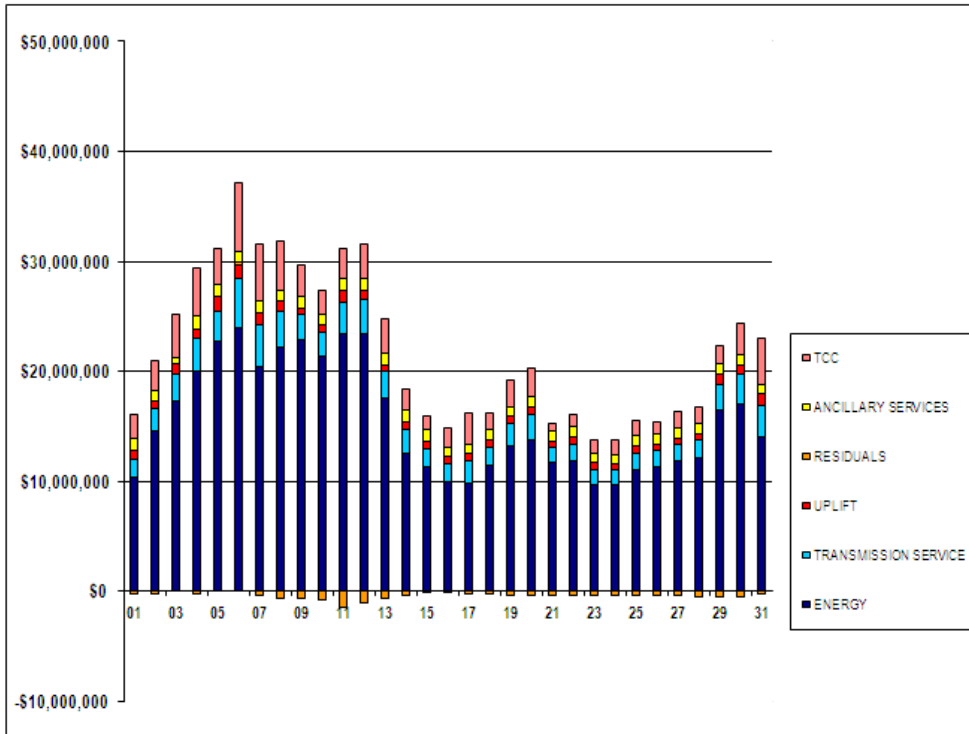
	MONDAY	TUESDAY	WEDNESDAY	THURSDAY	FRIDAY	SATURDAY	SUNDAY
					1	2	3
ENERGY					\$10,295,897.49	\$14,559,021.10	\$17,222,067.10
TRANSMISSION SERVICE					\$1,737,426.30	\$1,987,052.60	\$2,568,515.81
UPLIFT					\$788,463.31	\$706,393.13	\$876,464.69
RESIDUALS					(\$212,078.38)	(\$287,682.36)	\$26,954.03
ANCILLARY SERVICES					\$987,925.78	\$915,316.32	\$556,506.49
TCC					\$2,261,350.20	\$2,727,464.09	\$3,931,024.53
	4	5	6	7	8	9	10
ENERGY	\$20,047,516.93	\$22,665,766.41	\$24,006,963.36	\$20,348,684.78	\$22,149,548.92	\$22,814,828.99	\$21,406,061.04
TRANSMISSION SERVICE	\$2,959,871.72	\$2,773,144.33	\$4,407,373.36	\$3,846,948.75	\$3,237,099.56	\$2,313,780.01	\$2,191,454.43
UPLIFT	\$868,251.70	\$1,312,431.36	\$1,182,360.27	\$1,078,514.60	\$961,479.91	\$636,009.75	\$677,320.16
RESIDUALS	(\$275,891.33)	\$46,704.00	\$280,216.59	(\$465,511.24)	(\$687,428.15)	(\$683,793.60)	(\$801,646.47)
ANCILLARY SERVICES	\$1,172,049.71	\$1,135,038.21	\$1,007,774.26	\$1,162,349.97	\$1,013,470.31	\$1,057,745.56	\$858,677.88
TCC	\$4,397,633.34	\$3,186,340.83	\$6,254,878.43	\$5,162,343.05	\$4,412,836.70	\$2,829,556.02	\$2,217,634.14
	11	12	13	14	15	16	17
ENERGY	\$23,460,691.04	\$23,406,822.17	\$17,565,181.43	\$12,524,154.18	\$11,298,004.54	\$9,993,524.27	\$9,819,862.64
TRANSMISSION SERVICE	\$2,862,625.64	\$3,062,401.34	\$2,443,025.74	\$2,188,592.51	\$1,664,371.58	\$1,532,209.51	\$2,009,441.85
UPLIFT	\$1,030,154.10	\$866,364.40	\$545,320.03	\$648,715.67	\$693,653.90	\$685,060.31	\$692,602.52
RESIDUALS	(\$1,517,221.75)	(\$1,137,122.17)	(\$670,472.74)	(\$421,623.56)	(\$195,148.20)	(\$138,266.71)	(\$215,910.91)
ANCILLARY SERVICES	\$1,022,941.22	\$1,093,002.70	\$1,116,596.90	\$1,060,008.27	\$1,015,222.89	\$890,733.57	\$777,825.01
TCC	\$2,738,200.48	\$3,161,726.86	\$3,110,944.17	\$1,930,654.91	\$1,231,034.92	\$1,685,710.22	\$2,939,810.90
	18	19	20	21	22	23	24
ENERGY	\$11,437,826.31	\$13,154,331.34	\$13,770,090.59	\$11,722,122.57	\$11,879,935.73	\$9,672,040.76	\$9,626,211.13
TRANSMISSION SERVICE	\$1,641,221.78	\$2,138,741.66	\$2,264,192.03	\$1,350,739.42	\$1,443,908.55	\$1,381,069.75	\$1,379,650.51
UPLIFT	\$623,658.86	\$584,524.84	\$686,516.39	\$508,952.57	\$753,963.30	\$591,811.04	\$568,451.41
RESIDUALS	(\$311,036.75)	(\$340,746.87)	(\$355,365.85)	(\$454,081.45)	(\$462,555.62)	(\$401,451.58)	(\$346,720.52)
ANCILLARY SERVICES	\$931,714.13	\$895,409.24	\$916,215.98	\$908,435.38	\$906,370.46	\$838,421.57	\$753,831.64
TCC	\$1,576,080.14	\$2,353,673.67	\$2,606,713.54	\$794,554.21	\$1,064,251.06	\$1,266,731.98	\$1,350,681.77
	25	26	27	28	29	30	31
ENERGY	\$11,061,069.82	\$11,318,223.60	\$11,771,330.59	\$12,140,044.77	\$16,410,978.95	\$17,043,981.76	\$14,021,069.02
TRANSMISSION SERVICE	\$1,515,207.75	\$1,440,111.04	\$1,613,103.30	\$1,636,270.97	\$2,330,310.71	\$2,732,860.11	\$2,839,051.33
UPLIFT	\$611,734.65	\$597,187.93	\$516,241.59	\$520,239.62	\$961,381.10	\$786,211.81	\$1,102,746.99
RESIDUALS	(\$348,143.84)	(\$369,184.38)	(\$411,253.35)	(\$477,846.84)	(\$587,863.38)	(\$579,291.88)	(\$302,669.53)
ANCILLARY SERVICES	\$901,716.86	\$922,592.83	\$925,698.76	\$917,116.57	\$940,545.32	\$906,818.94	\$808,880.67
TCC	\$1,361,727.37	\$1,116,141.43	\$1,542,297.74	\$1,547,197.26	\$1,670,621.83	\$2,943,354.67	\$4,264,216.21



SETTLEMENTS REPORT
January 2010 Close-Out Settlement
October 6, 2010

Close-Out Settlement – Market Costs Analysis

	MONDAY	TUESDAY	WEDNESDAY	THURSDAY	FRIDAY	SATURDAY	SUNDAY
					1	2	3
ENERGY					\$10,295,897.53	\$14,559,021.23	\$17,222,067.11
TRANSMISSION SERVICE					\$1,737,426.30	\$1,987,052.61	\$2,568,515.81
UPLIFT					\$788,463.31	\$706,393.13	\$876,464.69
RESIDUALS					(\$212,076.43)	(\$287,682.36)	\$26,954.00
ANCILLARY SERVICES					\$987,925.78	\$915,316.32	\$556,506.49
TCC					\$2,261,350.20	\$2,727,464.09	\$3,931,024.53
	4	5	6	7	8	9	10
ENERGY	\$20,047,517.11	\$22,665,766.69	\$24,007,278.25	\$20,348,684.66	\$22,149,548.98	\$22,814,829.00	\$21,406,061.12
TRANSMISSION SERVICE	\$2,959,871.72	\$2,773,144.33	\$4,407,373.36	\$3,846,946.78	\$3,237,099.59	\$2,313,780.03	\$2,191,454.43
UPLIFT	\$868,251.70	\$1,312,431.37	\$1,182,360.28	\$1,078,514.55	\$961,479.91	\$636,009.75	\$677,320.15
RESIDUALS	(\$275,891.24)	\$46,703.97	\$280,193.10	(\$465,511.23)	(\$687,428.14)	(\$683,793.58)	(\$801,646.42)
ANCILLARY SERVICES	\$1,172,049.71	\$1,135,038.21	\$1,007,774.26	\$1,162,350.01	\$1,013,470.36	\$1,057,745.58	\$858,677.89
TCC	\$4,397,633.34	\$3,186,340.83	\$6,254,878.43	\$5,162,343.05	\$4,412,836.70	\$2,829,556.02	\$2,217,634.14
	11	12	13	14	15	16	17
ENERGY	\$23,460,691.12	\$23,407,134.77	\$17,565,181.59	\$12,524,154.37	\$11,298,004.69	\$9,993,524.25	\$9,819,862.73
TRANSMISSION SERVICE	\$2,862,625.66	\$3,062,401.34	\$2,443,025.75	\$2,188,592.51	\$1,664,371.58	\$1,532,209.51	\$2,009,441.86
UPLIFT	\$1,030,154.14	\$866,364.35	\$545,320.03	\$643,715.67	\$693,653.90	\$685,060.36	\$692,602.52
RESIDUALS	(\$1,517,221.69)	(\$1,137,434.95)	(\$670,472.73)	(\$421,623.58)	(\$195,148.19)	(\$138,266.71)	(\$215,910.91)
ANCILLARY SERVICES	\$1,022,941.24	\$1,093,000.07	\$1,116,596.90	\$1,060,008.27	\$1,015,222.89	\$890,793.57	\$777,625.02
TCC	\$2,738,200.48	\$3,161,726.86	\$3,110,944.17	\$1,930,654.91	\$1,231,034.92	\$1,685,710.22	\$2,939,810.90
	18	19	20	21	22	23	24
ENERGY	\$11,437,826.37	\$13,154,331.19	\$13,770,090.91	\$11,722,122.54	\$11,879,935.60	\$9,672,040.60	\$9,626,210.96
TRANSMISSION SERVICE	\$1,641,221.78	\$2,138,741.67	\$2,264,192.05	\$1,350,739.42	\$1,443,908.55	\$1,381,069.75	\$1,379,650.51
UPLIFT	\$623,658.86	\$584,524.84	\$686,516.39	\$508,952.57	\$753,963.25	\$591,636.10	\$569,451.42
RESIDUALS	(\$311,036.74)	(\$340,746.88)	(\$355,365.85)	(\$454,081.51)	(\$462,555.59)	(\$401,451.55)	(\$346,720.52)
ANCILLARY SERVICES	\$931,714.13	\$895,409.26	\$916,216.01	\$908,435.40	\$906,370.46	\$838,421.57	\$753,831.64
TCC	\$1,576,080.14	\$2,353,673.67	\$2,606,713.54	\$794,554.21	\$1,064,251.06	\$1,266,731.98	\$1,350,681.77
	25	26	27	28	29	30	31
ENERGY	\$11,061,069.76	\$11,318,223.45	\$11,771,330.62	\$12,140,044.89	\$16,410,978.85	\$17,043,981.79	\$14,021,069.12
TRANSMISSION SERVICE	\$1,515,207.75	\$1,440,111.04	\$1,613,103.30	\$1,636,270.98	\$2,330,310.71	\$2,732,860.16	\$2,839,051.33
UPLIFT	\$611,635.66	\$597,187.93	\$516,241.59	\$520,239.63	\$964,204.86	\$786,211.81	\$1,102,747.04
RESIDUALS	(\$348,143.84)	(\$369,184.38)	(\$411,253.40)	(\$477,846.81)	(\$587,663.42)	(\$579,291.88)	(\$302,669.53)
ANCILLARY SERVICES	\$901,716.87	\$922,592.83	\$925,698.76	\$917,116.59	\$940,545.32	\$906,819.02	\$808,880.68
TCC	\$1,361,727.37	\$1,116,141.43	\$1,542,297.74	\$1,547,197.26	\$1,670,621.83	\$2,948,354.67	\$4,264,216.21



FOR DISCUSSION PURPOSES ONLY