

Market Operation's Report

*Business Issue Committee Meeting
December 14, 2005*

Agenda #3

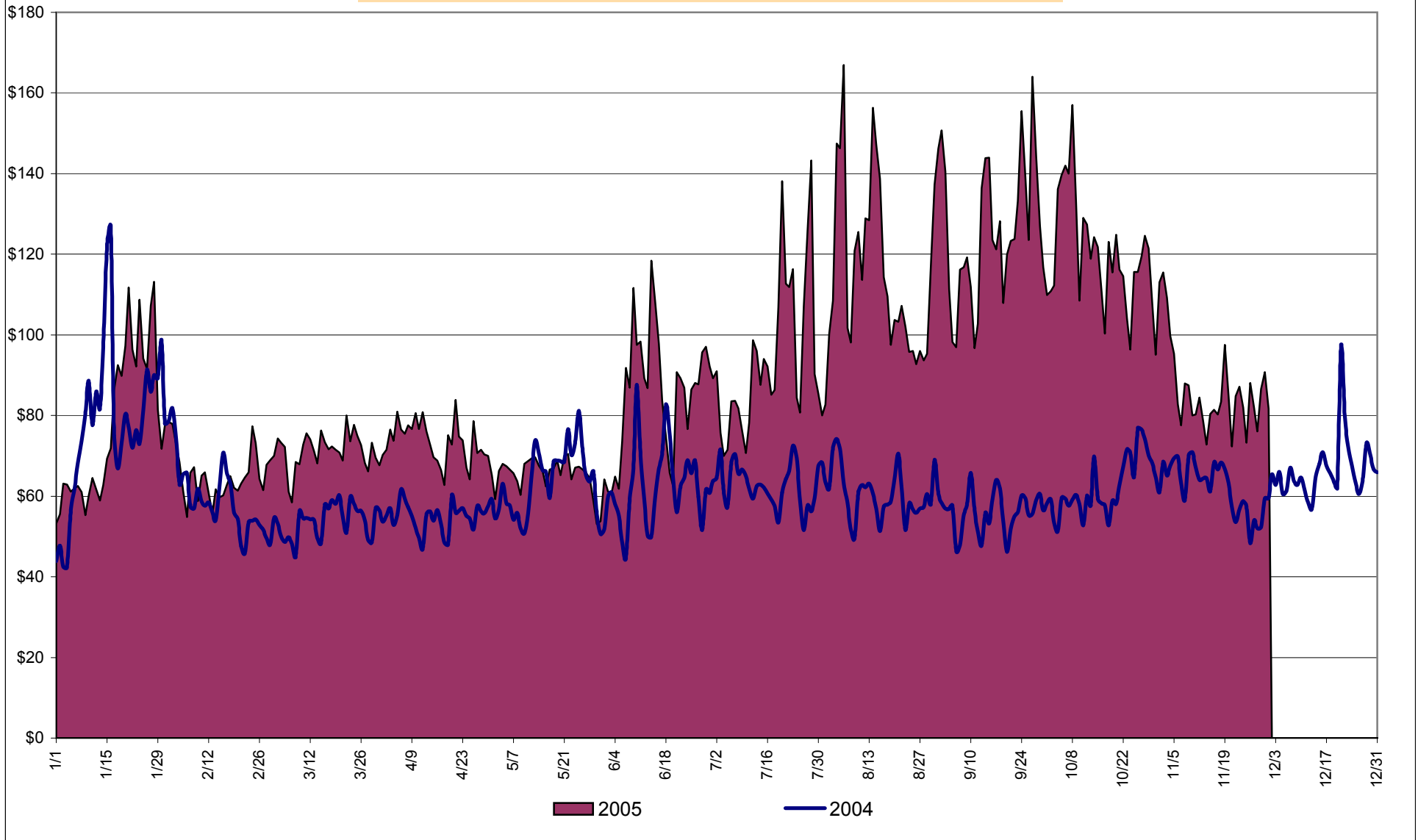
Report Items

- Market Performance Highlights

Market Performance Highlights for November 2005

- NYISO LBMP and Average Cost have decreased this month relative to October.
 - *LBMP for November is \$82.00/MWh, down from \$118.56/MWh in October.*
 - *Average cost is \$85.72/MWh, down from \$121.32/MWh in October.*
 - *Both Day Ahead and Real Time LBMPs have decreased this month.*
- Fuel prices are uniformly down this month
 - *Kerosene is \$13.04/mmBTU, down from \$15.67/mmBTU in October*
 - *No. 2 Fuel Oil is \$12.03/mmBTU, down from \$13.51/mmBTU in October*
 - *Natural Gas is \$10.45/mmBTU, down from \$14.40/mmBTU in October*
 - *No. 6 Fuel Oil is \$8.42/mmBTU, down from \$9.68/mmBTU in October*
- Uplift has increased this month relative to October 2005 and relative to November 2004.
 - *Uplift (not including NYISO cost of operations) is \$1.26/MWh, up from \$0.52/MWh in October 2005.*
- Regulation Prices increased slightly in the Day Ahead market and declined in the Real Time market this month.

Daily NYISO Average Cost/MWh (Energy & Ancillary Services)*
2004 Annual Average \$62.80/MWh
November 2004 YTD Average \$62.45/MWh
November 2005 YTD Average \$92.62/MWh



* Excludes ICAP payments

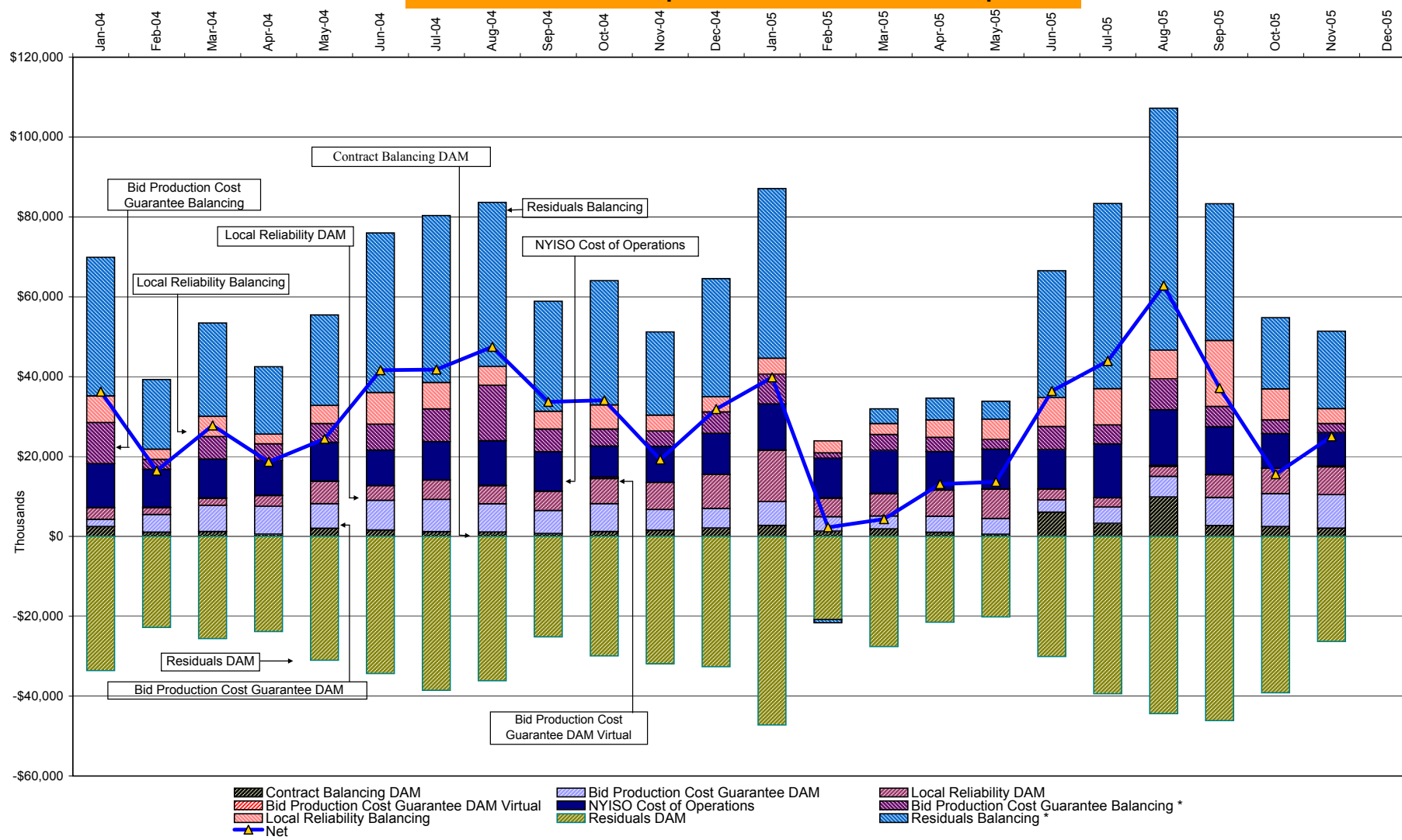
NYISO Average Cost/MWh (Energy and Ancillary Services)*
from the LBMP Customer point of view

| 2005 | <u>January</u> | <u>February</u> | <u>March</u> | <u>April</u> | <u>May</u> | <u>June</u> | <u>July</u> | <u>August</u> | <u>September</u> | <u>October</u> | <u>November</u> | <u>December</u> |
|---------------------------------|----------------|-----------------|--------------|--------------|--------------|--------------|--------------|---------------|------------------|----------------|-----------------|-----------------|
| LBMP | 75.70 | 64.03 | 69.95 | 71.28 | 63.13 | 84.83 | 92.41 | 115.20 | 122.44 | 118.56 | 82.00 | |
| NTAC | 0.43 | 0.36 | 0.23 | 0.49 | 0.40 | 0.58 | 0.46 | 0.25 | 0.10 | 0.03 | 0.39 | |
| Reserve | 0.25 | 0.08 | 0.17 | 0.21 | 0.20 | (0.01) | 0.11 | 0.02 | 0.31 | 0.54 | 0.34 | |
| Regulation | 0.32 | 0.40 | 0.34 | 0.22 | 0.25 | 0.20 | 0.14 | 0.06 | 0.41 | 0.64 | 0.70 | |
| NYISO Cost of Operations | 0.79 | 0.79 | 0.79 | 0.79 | 0.79 | 0.63 | 0.79 | 0.79 | 0.79 | 0.63 | 0.63 | |
| Uplift | 1.99 | (0.59) | (0.47) | 0.29 | 0.30 | 1.85 | 1.92 | 2.86 | 1.71 | 0.52 | 1.26 | |
| Voltage Support and Black Start | 0.39 | 0.39 | 0.39 | 0.39 | 0.39 | 0.39 | 0.39 | 0.39 | 0.39 | 0.39 | 0.39 | |
| Avg Monthly Cost | 79.86 | 65.45 | 71.38 | 73.67 | 65.46 | 88.48 | 96.21 | 119.56 | 126.16 | 121.32 | 85.72 | |
| | | | | | | | | | | | | |
| Avg YTD Cost | 79.86 | 73.34 | 72.67 | 72.90 | 71.60 | 74.94 | 78.94 | 85.61 | 90.42 | 93.20 | 92.62 | |
| <hr/> | | | | | | | | | | | | |
| 2004 | <u>January</u> | <u>February</u> | <u>March</u> | <u>April</u> | <u>May</u> | <u>June</u> | <u>July</u> | <u>August</u> | <u>September</u> | <u>October</u> | <u>November</u> | <u>December</u> |
| LBMP | 76.13 | 57.13 | 50.56 | 52.48 | 61.23 | 59.79 | 59.60 | 57.20 | 53.01 | 58.66 | 59.79 | 62.93 |
| NTAC | 0.47 | 0.42 | 0.55 | 0.51 | 0.42 | 0.53 | 0.34 | 0.43 | 0.23 | 0.29 | 0.46 | 0.69 |
| Reserve | 0.27 | 0.14 | 0.21 | 0.17 | 0.13 | 0.09 | 0.07 | 0.06 | 0.06 | 0.12 | 0.15 | 0.22 |
| Regulation | 0.23 | 0.36 | 0.29 | 0.15 | 0.13 | 0.14 | 0.14 | 0.17 | 0.32 | 0.43 | 0.45 | 0.28 |
| NYISO Cost of Operations | 0.73 | 0.73 | 0.73 | 0.72 | 0.73 | 0.63 | 0.63 | 0.73 | 0.73 | 0.63 | 0.72 | 0.73 |
| Uplift | 1.74 | 0.52 | 1.35 | 0.81 | 1.10 | 2.33 | 2.14 | 2.43 | 1.77 | 2.05 | 0.80 | 1.55 |
| Voltage Support and Black Start | 0.36 | 0.36 | 0.36 | 0.36 | 0.36 | 0.36 | 0.36 | 0.36 | 0.36 | 0.36 | 0.36 | 0.36 |
| Avg Monthly Cost | 79.94 | 59.66 | 54.05 | 55.21 | 64.09 | 63.87 | 63.27 | 61.38 | 56.48 | 62.54 | 62.74 | 66.75 |
| | | | | | | | | | | | | |
| Avg YTD Cost | 79.94 | 70.85 | 65.43 | 63.14 | 63.33 | 63.42 | 63.40 | 63.12 | 62.41 | 62.42 | 62.45 | 62.80 |

* Excludes ICAP payments

These numbers reflect the rebilling of prior periods

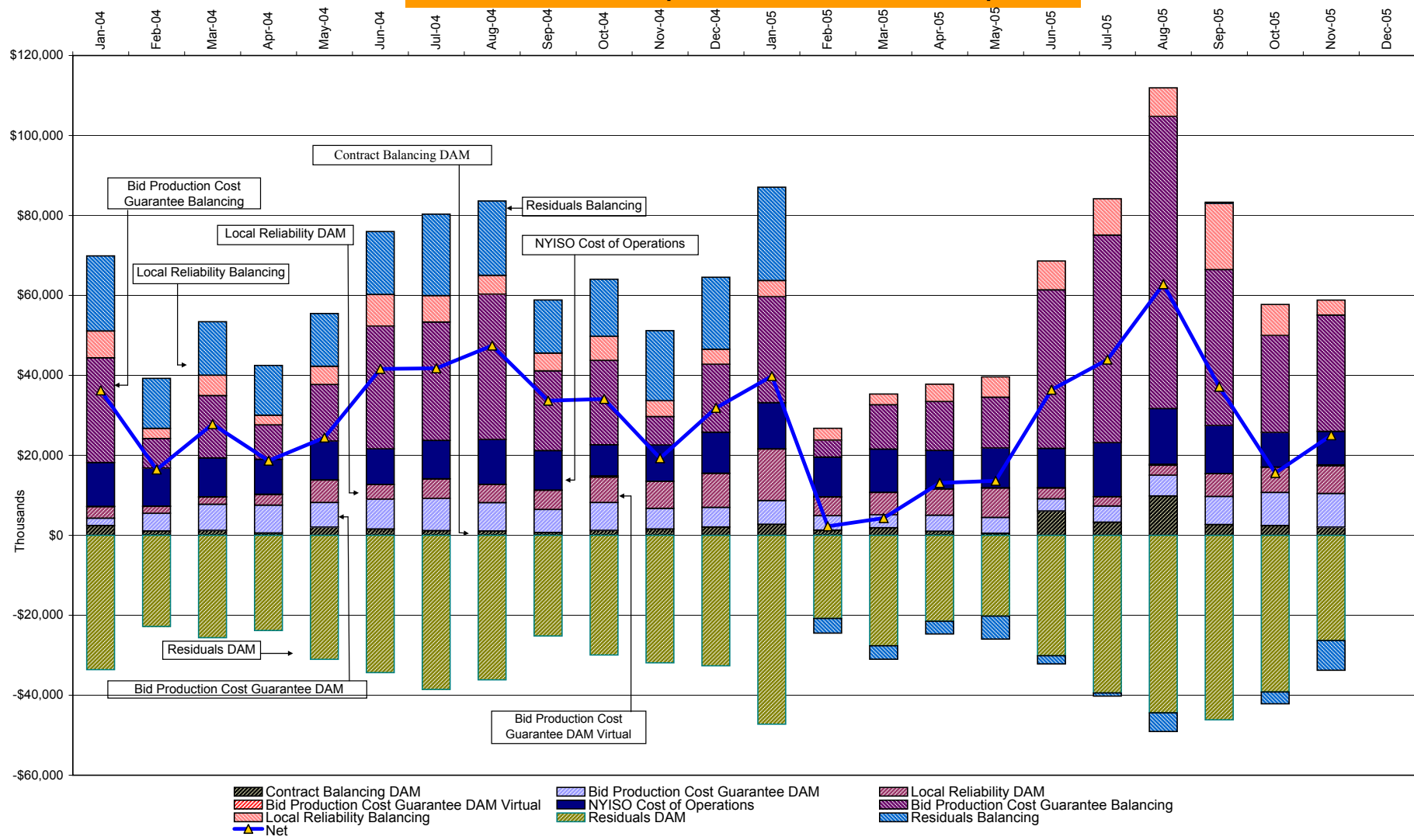
NYISO Dollar Flows - Uplift - OATT Schedule 1 components



DAM Contract Balancing amounts are for payments made to generating units to make them whole for being dispatched below their Day-Ahead schedule, as a result of out-of-merit dispatches.
 DAM Bid Production Cost Guarantees for Virtual Transactions are included in the chart and are shown from the inception of Virtual Transactions. These values are small and cannot be identified on the chart.
 DAM residuals are revenue charged or returned to customers due to the under or over collection of funds. On this chart, negative values represent funds returned to Transmission Customers (through Transmission Owners' Transmission Service Charges).

* Effective November 2005 codes 81305 and 81312 have been re-categorized from BPCG Balancing to Residuals Balancing so as to better reflect their uplift type (see 4-AE) .
 All months have been adjusted accordingly.

NYISO Dollar Flows - Uplift - OATT Schedule 1 components



DAM Contract Balancing amounts are for payments made to generating units to make them whole for being dispatched below their Day-Ahead schedule, as a result of out-of-merit dispatches.
 DAM Bid Production Cost Guarantees for Virtual Transactions are included in the chart and are shown from the inception of Virtual Transactions. These values are small and cannot be identified on the chart.
 DAM residuals are revenue charged or returned to customers due to the under or over collection of funds. On this chart, negative values represent funds returned to Transmission Customers (through Transmission Owners' Transmission Service Charges).

* This chart reflects the billing code categories that were in effect prior to the November 2005 re-categorization and is meant for comparison purposes only.

NYISO Markets Transactions

| 2005 | <u>January</u> | <u>February</u> | <u>March</u> | <u>April</u> | <u>May</u> | <u>June</u> | <u>July</u> | <u>August</u> | <u>September</u> | <u>October</u> | <u>November</u> | <u>December</u> |
|--|----------------|-----------------|--------------|--------------|------------|-------------|-------------|---------------|------------------|----------------|-----------------|-----------------|
| Day Ahead Market MWh | 14,281,481 | 12,510,148 | 13,410,579 | 12,215,628 | 12,773,478 | 14,981,363 | 16,344,465 | 16,587,663 | 14,706,243 | 13,309,658 | 12,893,992 | |
| DAM LSE Internal LBMP Energy Sales | 48% | 49% | 52% | 52% | 45% | 50% | 53% | 52% | 49% | 46% | 45% | |
| DAM External TC LBMP Energy Sales | 3% | 1% | 1% | 1% | 3% | 3% | 3% | 4% | 6% | 4% | 4% | |
| DAM Bilateral - Internal Bilaterals | 47% | 48% | 45% | 44% | 50% | 44% | 42% | 42% | 43% | 47% | 48% | |
| DAM Bilateral - Import/Non-LBMP Market Bilaterals | 1% | 1% | 1% | 0% | 0% | 1% | 1% | 1% | 2% | 2% | 2% | |
| DAM Bilateral - Export/Non-LBMP Market Bilaterals | 1% | 1% | 1% | 1% | 2% | 1% | 1% | 1% | 1% | 1% | 1% | |
| DAM Bilateral - Wheel Through Bilaterals | 1% | 0% | 1% | 0% | 0% | 1% | 0% | 0% | 0% | 0% | 0% | |
| Balancing Energy Market MWh | 419,365 | 127,124 | 348,162 | 54,545 | -114,876 | 678,572 | 804,232 | 1,115,203 | 556,961 | 384,383 | 365,677 | |
| Balancing Energy LSE Internal LBMP Energy Sales | 78% | -35% | 26% | -365% | -282% | 54% | 73% | 73% | 34% | 4% | -15% | |
| Balancing Energy External TC LBMP Energy Sales | 42% | 156% | 73% | 494% | 183% | 38% | 23% | 20% | 50% | 93% | 100% | |
| Balancing Energy Bilateral - Internal Bilaterals | -13% | -9% | 6% | -29% | 5% | 5% | 6% | 6% | 13% | 4% | 13% | |
| Balancing Energy Bilateral - Import/Non-LBMP Market Bilaterals | 0% | 0% | 0% | 0% | 0% | 0% | 0% | 0% | 0% | 0% | 0% | |
| Balancing Energy Bilateral - Export/Non-LBMP Market Bilaterals | 1% | 0% | 0% | 3% | 2% | 1% | 1% | 0% | 0% | 1% | 1% | |
| Balancing Energy Bilateral - Wheel Through Bilaterals | -8% | -13% | -5% | -2% | -7% | 3% | -2% | 1% | 3% | -1% | 2% | |
| Transactions Summary | | | | | | | | | | | | |
| LBMP | 53% | 51% | 54% | 54% | 47% | 55% | 58% | 58% | 56% | 52% | 50% | |
| Internal Bilaterals | 45% | 47% | 44% | 44% | 50% | 42% | 40% | 39% | 42% | 45% | 47% | |
| Import Bilaterals | 1% | 1% | 1% | 0% | 0% | 1% | 1% | 1% | 1% | 2% | 2% | |
| Export Bilaterals | 1% | 1% | 1% | 1% | 2% | 1% | 1% | 1% | 1% | 1% | 1% | |
| Wheels Through | 0% | 0% | 0% | 0% | 0% | 1% | 0% | 0% | 0% | 0% | 0% | |
| Market Share of Total Load | | | | | | | | | | | | |
| Day Ahead Market | 97.1% | 99.0% | 97.5% | 99.6% | 100.9% | 95.7% | 95.3% | 93.7% | 96.4% | 97.2% | 97.2% | |
| Balancing Energy + | 2.9% | 1.0% | 2.5% | 0.4% | -0.9% * | 4.3% | 4.7% | 6.3% | 3.6% | 2.8% | 2.8% | |
| Total MWh | 14,700,846 | 12,637,272 | 13,758,741 | 12,270,173 | 12,658,602 | 15,659,935 | 17,148,697 | 17,702,866 | 15,263,205 | 13,694,041 | 13,259,669 | |
| Average Daily Energy Sendout/Month GWh | 462 | 447 | 433 | 399 | 395 | 501 | 536 | 549 | 478 | 418 | 419 | |
| 2004 | <u>January</u> | <u>February</u> | <u>March</u> | <u>April</u> | <u>May</u> | <u>June</u> | <u>July</u> | <u>August</u> | <u>September</u> | <u>October</u> | <u>November</u> | <u>December</u> |
| Day Ahead Market MWh | 14,614,304 | 12,806,346 | 12,836,889 | 11,818,317 | 13,026,160 | 13,737,390 | 15,071,422 | 14,939,105 | 13,228,022 | 12,375,053 | 12,214,936 | 13,471,387 |
| DAM LSE Internal LBMP Energy Sales | 52% | 50% | 51% | 51% | 47% | 49% | 53% | 54% | 53% | 52% | 53% | 49% |
| DAM External TC LBMP Energy Sales | 4% | 2% | 3% | 3% | 4% | 3% | 2% | 1% | 1% | 0% | 0% | 2% |
| DAM Bilateral - Internal Bilaterals | 41% | 45% | 44% | 44% | 46% | 45% | 43% | 43% | 44% | 45% | 44% | 48% |
| DAM Bilateral - Import/Non-LBMP Market Bilaterals | 1% | 1% | 1% | 0% | 0% | 0% | 0% | 0% | 0% | 0% | 0% | 1% |
| DAM Bilateral - Export/Non-LBMP Market Bilaterals | 1% | 1% | 1% | 1% | 1% | 1% | 1% | 1% | 1% | 1% | 1% | 1% |
| DAM Bilateral - Wheel Through Bilaterals | 1% | 1% | 1% | 1% | 1% | 1% | 1% | 1% | 1% | 0% | 0% | 0% |
| Balancing Energy Market MWh | 367,460 | 269,220 | 508,837 | 238,876 | 380,696 | 424,726 | 139,472 | 297,506 | 322,983 | 68,554 | 275,972 | 574,623 |
| Balancing Energy LSE Internal LBMP Energy Sales | 66% | 31% | 61% | 84% | 30% | 29% | -46% | 35% | 19% | -9% | 24% | 70% |
| Balancing Energy External TC LBMP Energy Sales | 57% | 78% | 41% | 38% | 77% | 74% | 170% | 73% | 50% | 125% | 69% | 30% |
| Balancing Energy Bilateral - Internal Bilaterals | -20% | 0% | 0% | -9% | 3% | 5% | 13% | 5% | 39% | 23% | 11% | 3% |
| Balancing Energy Bilateral - Import/Non-LBMP Market Bilaterals | 0% | 1% | 0% | 0% | 0% | 0% | 0% | 0% | 0% | 0% | 0% | 0% |
| Balancing Energy Bilateral - Export/Non-LBMP Market Bilaterals | 0% | 0% | 0% | 1% | 1% | 0% | 1% | 0% | 0% | 0% | 0% | 0% |
| Balancing Energy Bilateral - Wheel Through Bilaterals | -4% | -11% | -3% | -14% | -11% | -8% | -39% | -13% | -8% | -40% | -5% | -3% |
| Transactions Summary | | | | | | | | | | | | |
| LBMP | 58% | 54% | 56% | 55% | 53% | 54% | 55% | 56% | 54% | 53% | 55% | 52% |
| Internal Bilaterals | 40% | 44% | 42% | 43% | 45% | 44% | 43% | 43% | 44% | 45% | 44% | 46% |
| Import Bilaterals | 1% | 1% | 1% | 0% | 0% | 0% | 0% | 0% | 0% | 0% | 0% | 0% |
| Export Bilaterals | 1% | 1% | 1% | 1% | 1% | 1% | 1% | 1% | 1% | 1% | 1% | 1% |
| Wheels Through | 1% | 0% | 1% | 0% | 1% | 1% | 0% | 1% | 1% | 0% | 0% | 0% |
| Market Share of Total Load | | | | | | | | | | | | |
| Day Ahead Market | 97.5% | 97.9% | 96.2% | 98.0% | 97.2% | 97.0% | 99.1% | 98.0% | 97.6% | 99.4% | 97.8% | 95.9% |
| Balancing Energy + | 2.5% | 2.1% | 3.8% | 2.0% | 2.8% | 3.0% | 0.9% | 2.0% | 2.4% | 0.6% | 2.2% | 4.1% |
| Total MWh | 14,981,764 | 13,075,566 | 13,345,726 | 12,057,193 | 13,406,856 | 14,162,116 | 15,210,894 | 15,236,611 | 13,551,005 | 12,443,607 | 12,490,908 | 14,046,010 |
| Average Daily Energy Sendout/Month GWh | 464 | 440 | 416 | 393 | 408 | 451 | 481 | 485 | 447 | 403 | 415 | 447 |

+ Balancing Energy: Load(MW) purchased at Real Time LBMP.

* The signs for the detail section intuitively reflect the direction of power flow eliminating the use of double negatives when Balancing Energy is negative.

Notes: Percent totals may not equal 100% due to rounding.
Virtual Transactions are not reflected in this chart.

NYISO Markets 2005 Energy Statistics

| | <u>January</u> | <u>February</u> | <u>March</u> | <u>April</u> | <u>May</u> | <u>June</u> | <u>July</u> | <u>August</u> | <u>September</u> | <u>October</u> | <u>November</u> | <u>December</u> |
|--|----------------|-----------------|--------------|--------------|------------|-------------|-------------|---------------|------------------|----------------|-----------------|-----------------|
| <u>DAY AHEAD LBMP</u> | | | | | | | | | | | | |
| Price * | \$69.55 | \$61.04 | \$67.17 | \$68.14 | \$59.59 | \$75.49 | \$83.75 | \$102.33 | \$115.47 | \$110.99 | \$78.56 | |
| Standard Deviation | \$23.42 | \$12.00 | \$12.49 | \$14.20 | \$13.39 | \$22.85 | \$24.32 | \$31.65 | \$32.31 | \$28.39 | \$21.07 | |
| Load Wtg.Price ** | \$72.26 | \$62.42 | \$68.61 | \$69.92 | \$61.44 | \$79.64 | \$88.09 | \$107.34 | \$120.22 | \$115.20 | \$81.05 | |
| <u>RTC *** LBMP</u> | | | | | | | | | | | | |
| Price * | \$74.47 | \$55.93 | \$70.40 | \$69.92 | \$61.59 | \$85.42 | \$94.96 | \$129.60 | \$116.00 | \$108.53 | \$74.02 | |
| Standard Deviation | \$44.64 | \$16.80 | \$26.13 | \$23.51 | \$59.20 | \$62.91 | \$68.35 | \$116.09 | \$44.35 | \$42.95 | \$33.43 | |
| Load Wtg.Price ** | \$77.48 | \$57.10 | \$72.12 | \$71.72 | \$64.16 | \$90.25 | \$100.76 | \$138.00 | \$120.72 | \$112.25 | \$76.57 | |
| <u>REAL TIME LBMP</u> | | | | | | | | | | | | |
| Price * | \$70.25 | \$57.57 | \$68.04 | \$64.95 | \$57.20 | \$77.75 | \$90.48 | \$122.21 | \$114.94 | \$110.90 | \$74.62 | |
| Standard Deviation | \$31.79 | \$20.48 | \$32.50 | \$26.06 | \$42.34 | \$55.70 | \$72.95 | \$103.00 | \$42.92 | \$55.35 | \$36.61 | |
| Load Wtg.Price ** | \$73.26 | \$58.86 | \$69.88 | \$66.77 | \$59.04 | \$83.96 | \$96.82 | \$130.69 | \$120.36 | \$115.69 | \$77.51 | |
| Average Daily Energy Sendout/Month GWh | 462 | 447 | 433 | 399 | 395 | 501 | 536 | 549 | 478 | 418 | 419 | |

NYISO Markets 2004 Energy Statistics

| | <u>January</u> | <u>February</u> | <u>March</u> | <u>April</u> | <u>May</u> | <u>June</u> | <u>July</u> | <u>August</u> | <u>September</u> | <u>October</u> | <u>November</u> | <u>December</u> |
|--|----------------|-----------------|--------------|--------------|------------|-------------|-------------|---------------|------------------|----------------|-----------------|-----------------|
| <u>DAY AHEAD LBMP</u> | | | | | | | | | | | | |
| Price * | \$72.12 | \$55.31 | \$49.08 | \$51.01 | \$57.25 | \$55.03 | \$55.33 | \$52.59 | \$49.03 | \$55.32 | \$55.89 | \$58.70 |
| Standard Deviation | \$25.99 | \$14.40 | \$10.90 | \$11.42 | \$16.72 | \$17.82 | \$12.68 | \$12.49 | \$11.17 | \$12.89 | \$14.62 | \$14.44 |
| Load Wtg.Price ** | \$75.01 | \$56.90 | \$50.44 | \$52.50 | \$59.89 | \$58.29 | \$57.32 | \$54.60 | \$50.78 | \$56.93 | \$57.80 | \$60.52 |
| <u>RTC *** LBMP</u> | | | | | | | | | | | | |
| Price * | \$77.51 | \$54.41 | \$53.01 | \$56.94 | \$60.98 | \$59.15 | \$60.43 | \$58.27 | \$58.01 | \$57.59 | \$56.91 | \$62.28 |
| Standard Deviation | \$37.54 | \$15.73 | \$16.25 | \$18.41 | \$23.58 | \$24.50 | \$20.60 | \$19.57 | \$25.82 | \$16.11 | \$19.63 | \$21.85 |
| Load Wtg.Price ** | \$80.51 | \$55.89 | \$54.71 | \$58.89 | \$64.14 | \$63.17 | \$62.81 | \$61.02 | \$60.75 | \$59.27 | \$59.12 | \$64.24 |
| <u>REAL TIME LBMP</u> | | | | | | | | | | | | |
| Price * | \$73.72 | \$52.95 | \$49.56 | \$50.83 | \$56.20 | \$54.03 | \$55.08 | \$52.89 | \$51.06 | \$54.00 | \$55.46 | \$61.76 |
| Standard Deviation | \$32.61 | \$15.04 | \$17.75 | \$14.15 | \$25.74 | \$23.42 | \$17.07 | \$19.56 | \$15.59 | \$17.42 | \$20.32 | \$37.79 |
| Load Wtg.Price ** | \$76.85 | \$54.33 | \$51.27 | \$52.36 | \$59.61 | \$58.01 | \$57.44 | \$55.75 | \$53.06 | \$55.57 | \$57.67 | \$64.65 |
| Average Daily Energy Sendout/Month GWh | 464 | 440 | 416 | 393 | 408 | 451 | 481 | 485 | 447 | 403 | 415 | 447 |

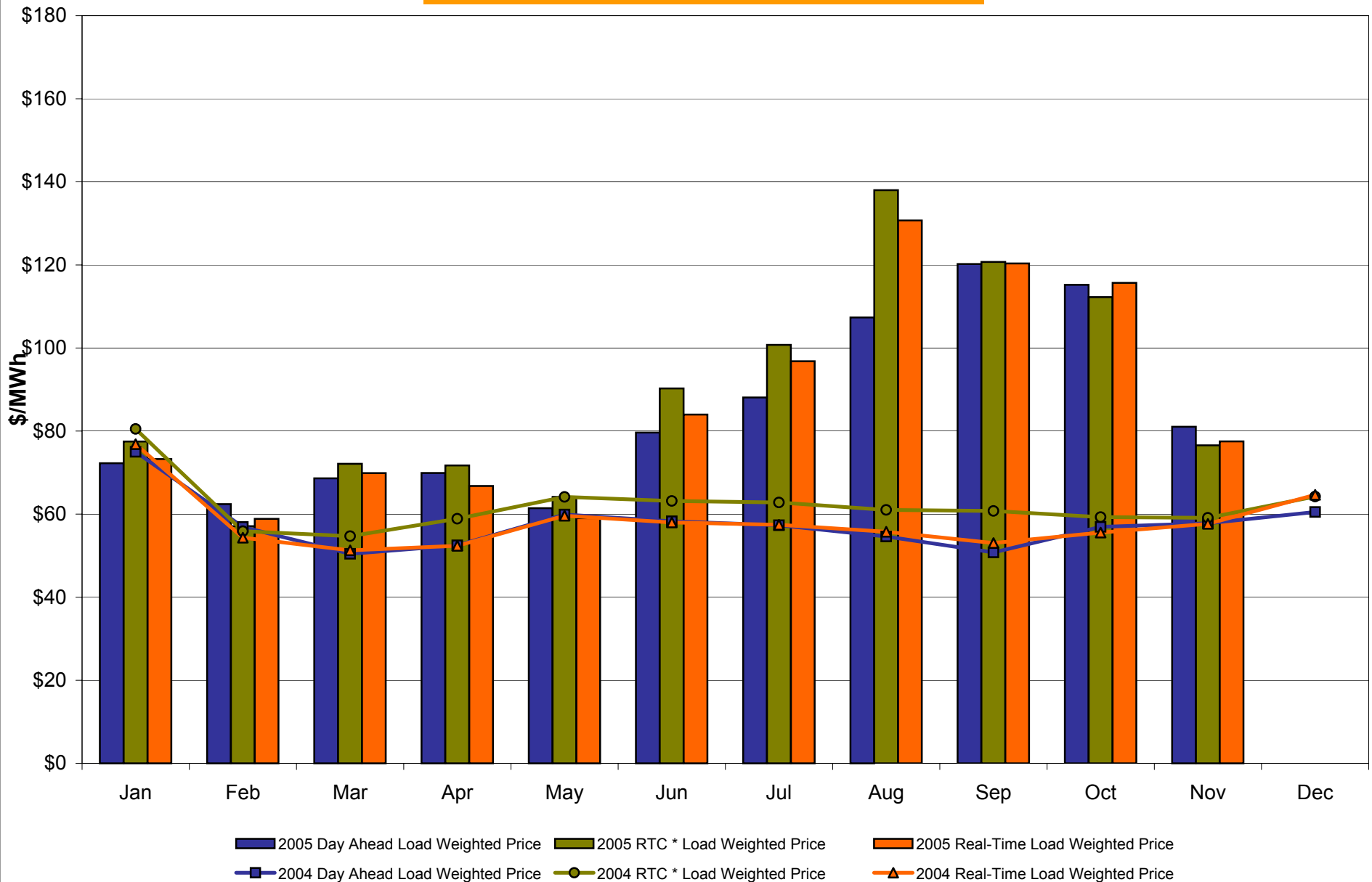
* Average zonal load weighted prices

** Average zonal load weighted prices, load weighted in each hour

*** Referred to as RTC beginning February 2005

Prior to February 2005 known as BME or Hour Ahead Market (HAM)

NYISO Monthly Average Internal LBMPs 2004 - 2005



* Referred to as RTC beginning February 2005
Prior to February 2005 known as BME or Hour Ahead Market (HAM)

November 2005 Zonal Statistics for NYISO (\$/MWh)

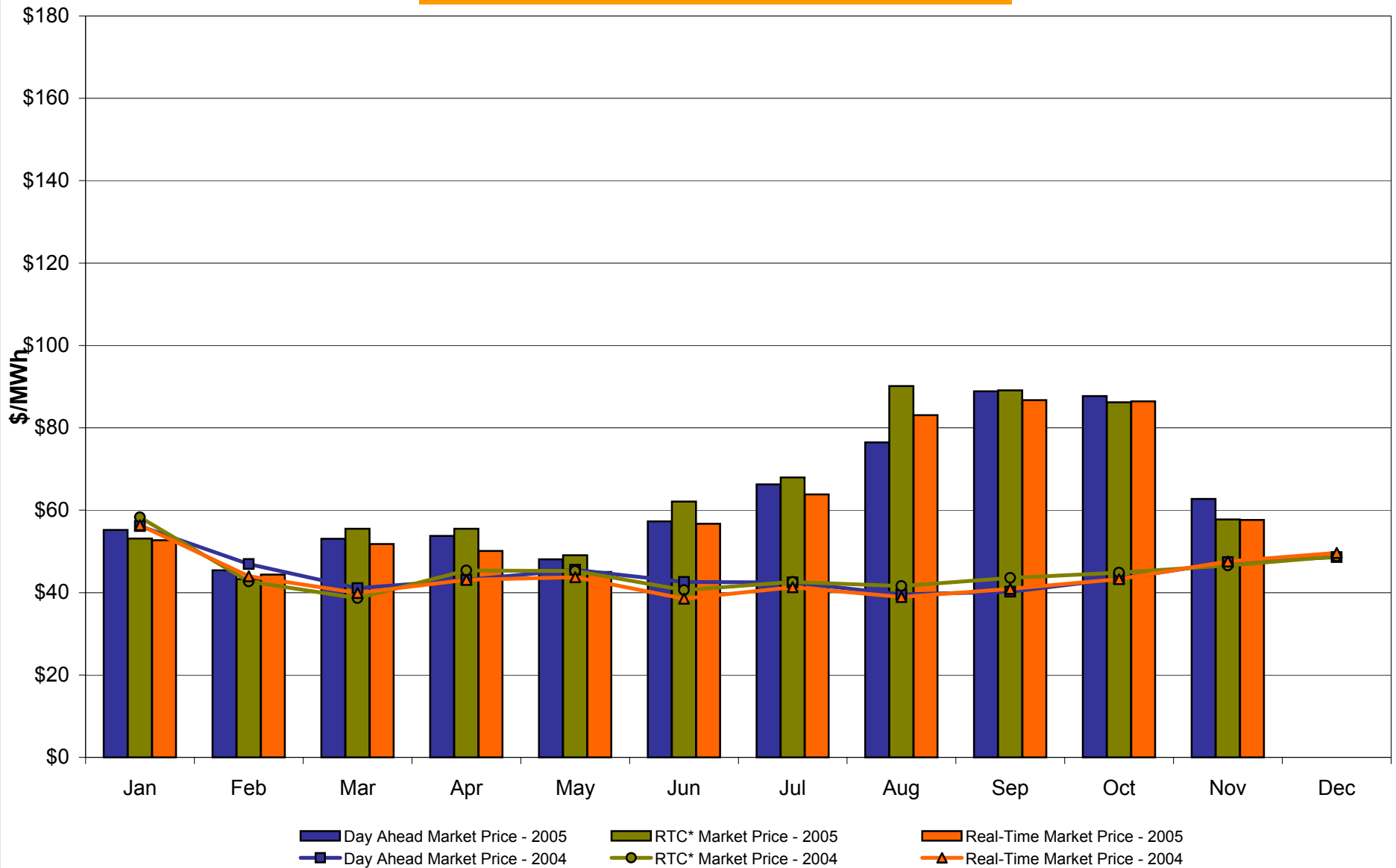
| | <u>WEST</u> <u>Zone A</u> | <u>GENESEE</u> <u>Zone B</u> | <u>NORTH</u> <u>Zone D</u> | <u>CENTRAL</u> <u>Zone C</u> | <u>MOHAWK</u> <u>VALLEY</u> <u>Zone E</u> | <u>CAPITAL</u> <u>Zone F</u> | <u>HUDSON</u> <u>VALLEY</u> <u>Zone G</u> | <u>MILLWOOD</u> <u>Zone H</u> | <u>DUNWOODIE</u> <u>Zone I</u> | <u>NEW YORK</u> <u>CITY</u> <u>Zone J</u> | <u>LONG</u> <u>ISLAND</u> <u>Zone K</u> |
|------------------------------|--|--|-------------------------------|---|--|---------------------------------|---|----------------------------------|-----------------------------------|---|---|
| <u>DAY AHEAD LBMP</u> | | | | | | | | | | | |
| Unweighted Price * | 62.76 | 66.34 | 69.45 | 68.95 | 71.24 | 76.81 | 77.27 | 78.75 | 79.60 | 86.75 | 91.75 |
| Standard Deviation | 18.13 | 19.50 | 19.43 | 20.20 | 20.63 | 22.57 | 23.27 | 23.68 | 23.68 | 25.01 | 17.85 |
| <u>RTC** LBMP</u> | | | | | | | | | | | |
| Unweighted Price * | 57.74 | 62.06 | 64.75 | 64.11 | 66.14 | 70.00 | 71.10 | 71.36 | 71.50 | 84.47 | 86.07 |
| Standard Deviation | 30.83 | 32.11 | 32.34 | 32.84 | 33.57 | 35.13 | 35.57 | 35.70 | 35.75 | 36.38 | 33.22 |
| <u>REAL TIME LBMP</u> | | | | | | | | | | | |
| Unweighted Price * | 57.63 | 62.08 | 64.65 | 64.02 | 66.00 | 69.50 | 70.72 | 70.96 | 71.10 | 86.14 | 87.08 |
| Standard Deviation | 33.39 | 35.24 | 35.90 | 36.05 | 36.97 | 38.45 | 39.02 | 39.15 | 39.20 | 40.58 | 36.41 |
| | <u>ONTARIO</u> <u>IESO</u> <u>Zone O</u> | <u>HYDRO</u> <u>QUEBEC</u> <u>Zone M</u> | <u>PJM</u> <u>Zone P</u> | <u>NEW</u> <u>ENGLAND</u> <u>Zone N</u> | <u>CROSS</u> <u>SOUND</u> <u>CABLE</u> <u>Controllable</u> <u>Line</u> | | | | | | |
| <u>DAY AHEAD LBMP</u> | | | | | | | | | | | |
| Unweighted Price * | 60.91 | 71.32 | 66.20 | 77.21 | 90.59 | | | | | | |
| Standard Deviation | 17.21 | 19.15 | 20.78 | 22.25 | 16.99 | | | | | | |
| <u>RTC** LBMP</u> | | | | | | | | | | | |
| Unweighted Price * | 50.52 | 52.38 | 53.16 | 67.76 | 81.38 | | | | | | |
| Standard Deviation | 20.06 | 154.12 | 21.31 | 21.49 | 21.58 | | | | | | |
| <u>REAL TIME LBMP</u> | | | | | | | | | | | |
| Unweighted Price * | 56.11 | 57.94 | 58.20 | 73.52 | 85.83 | | | | | | |
| Standard Deviation | 32.49 | 85.72 | 33.52 | 35.34 | 34.87 | | | | | | |

* Straight zonal LBMP averages

** Referred to as RTC beginning February 2005

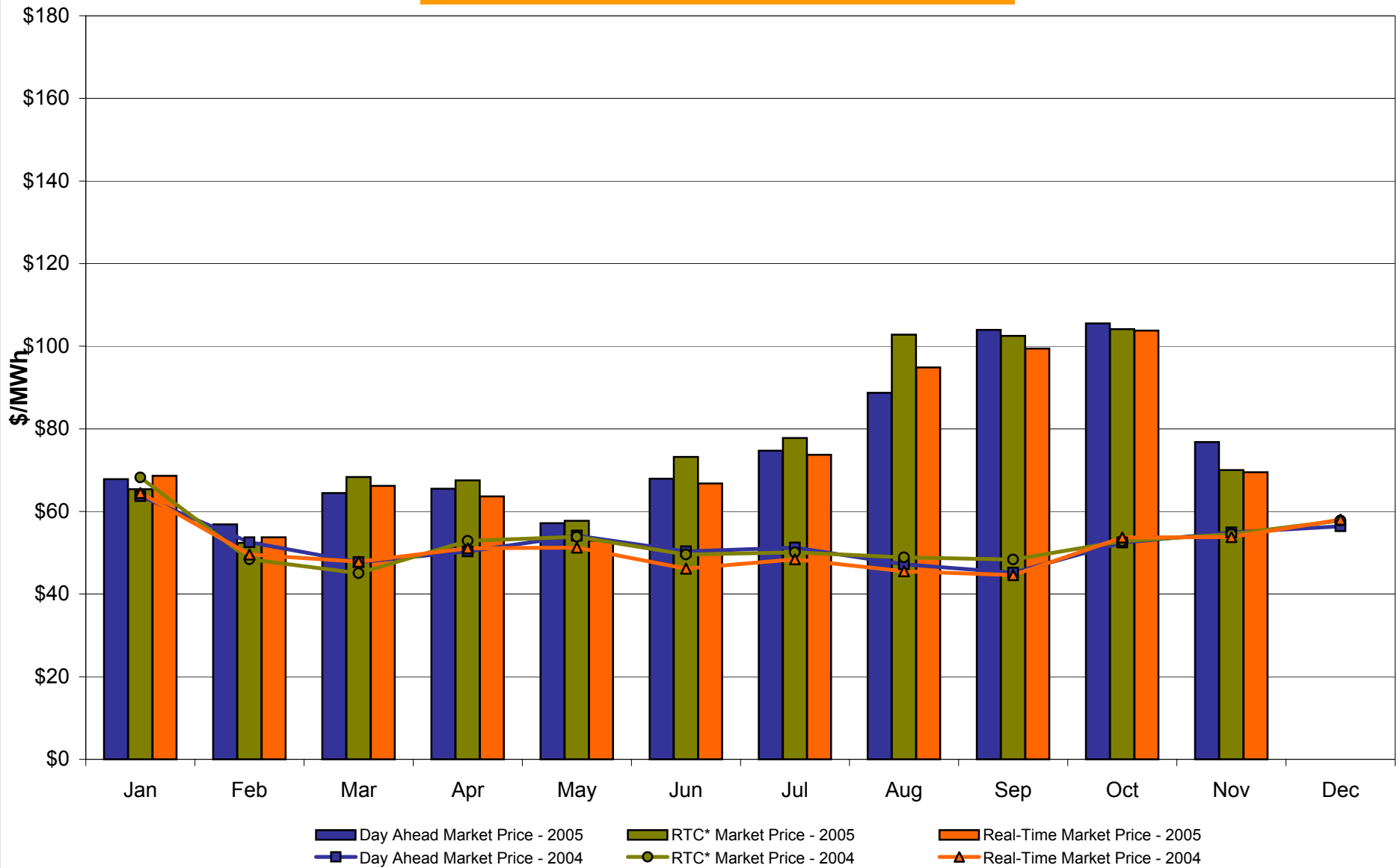
Prior to February 2005 known as BME or Hour Ahead Market (HAM)

West Zone A Monthly Average LBMP Prices 2004 - 2005



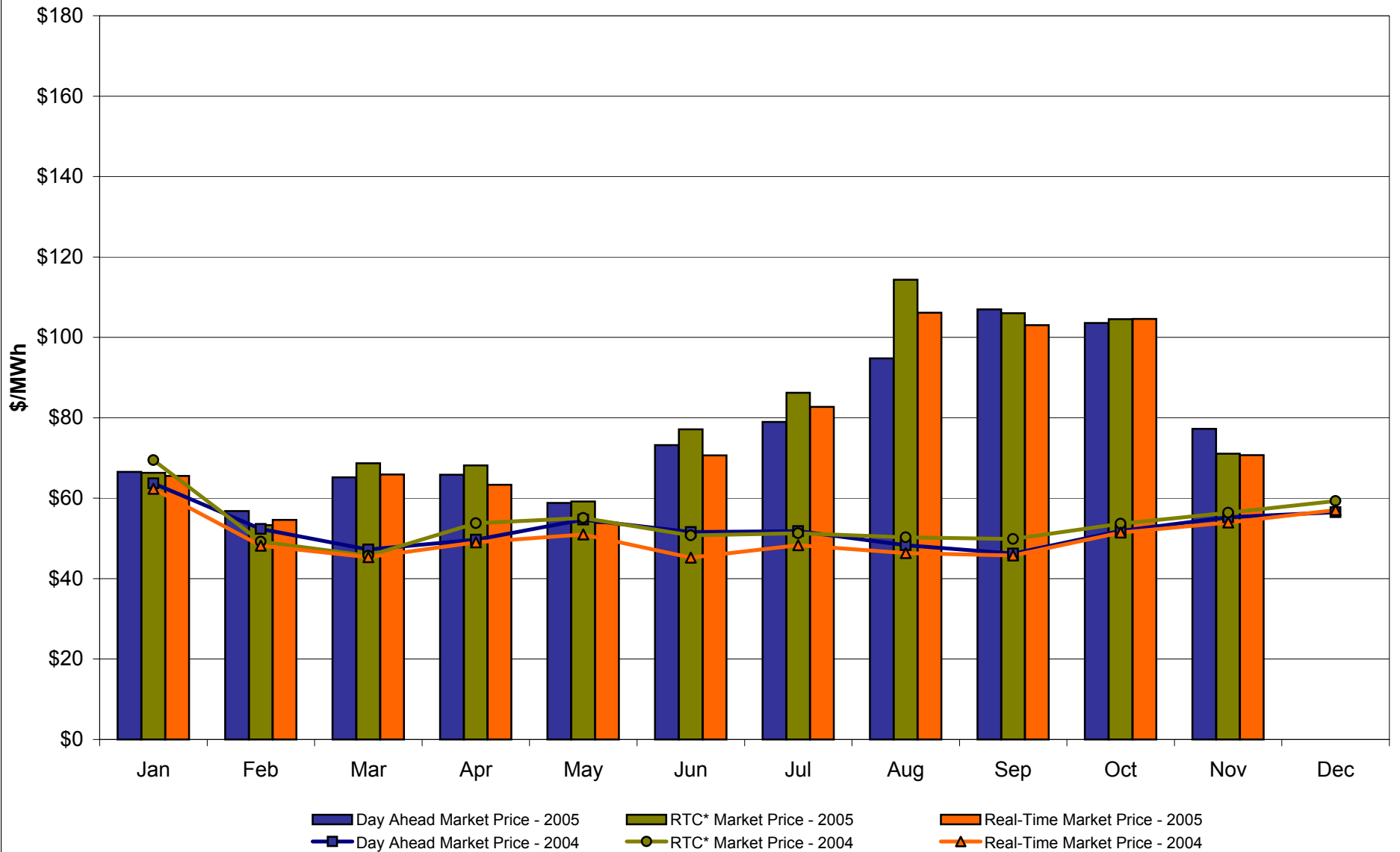
* Referred to as RTC beginning February 2005
Prior to February 2005 known as BME or Hour Ahead Market (HAM)

Capital Zone F Monthly Average LBMP Prices 2004 - 2005



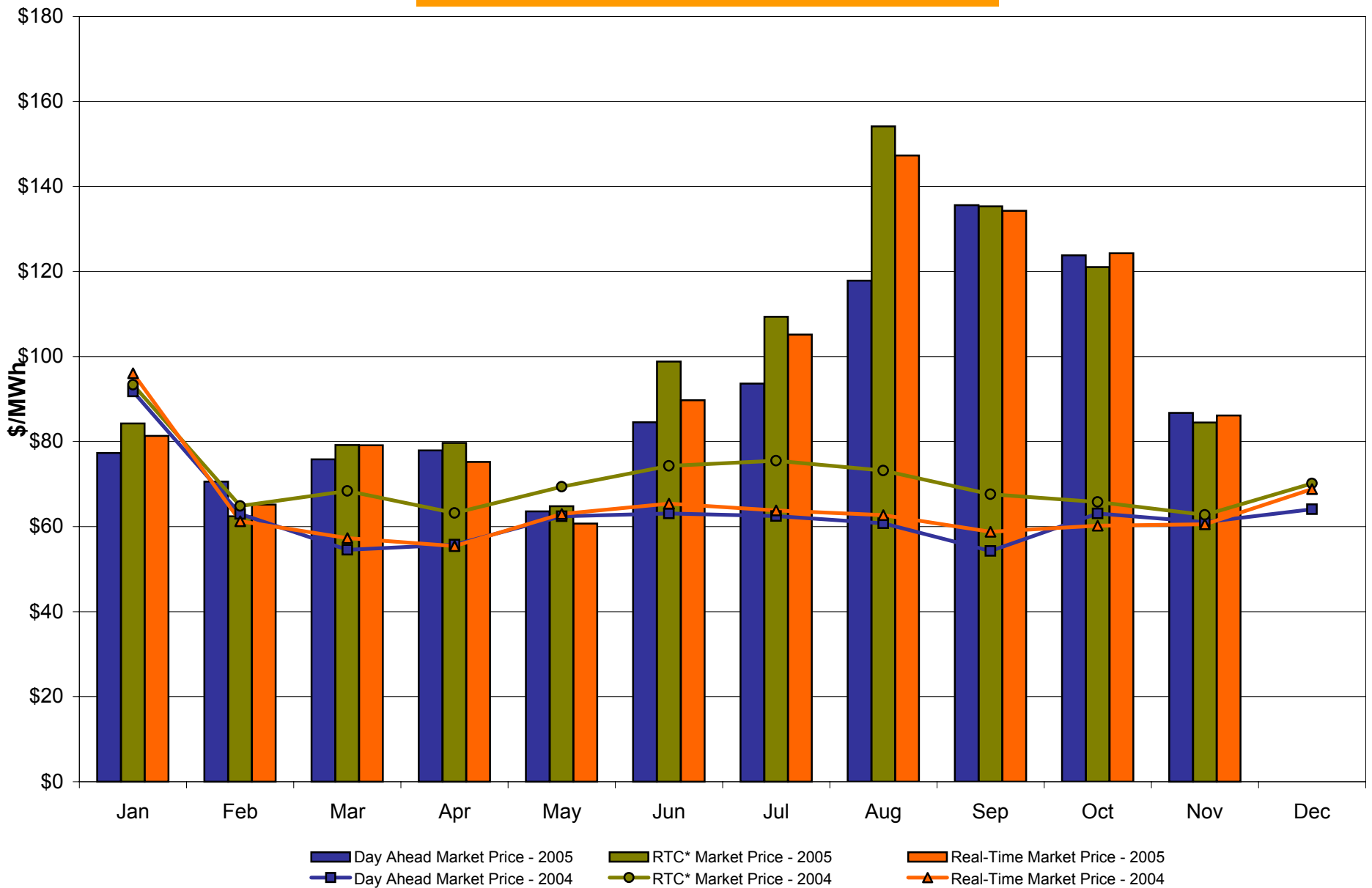
* Referred to as RTC beginning February 2005
Prior to February 2005 known as BME or Hour Ahead Market (HAM)

Hudson Valley Zone G Monthly Average LBMP Prices 2004 - 2005



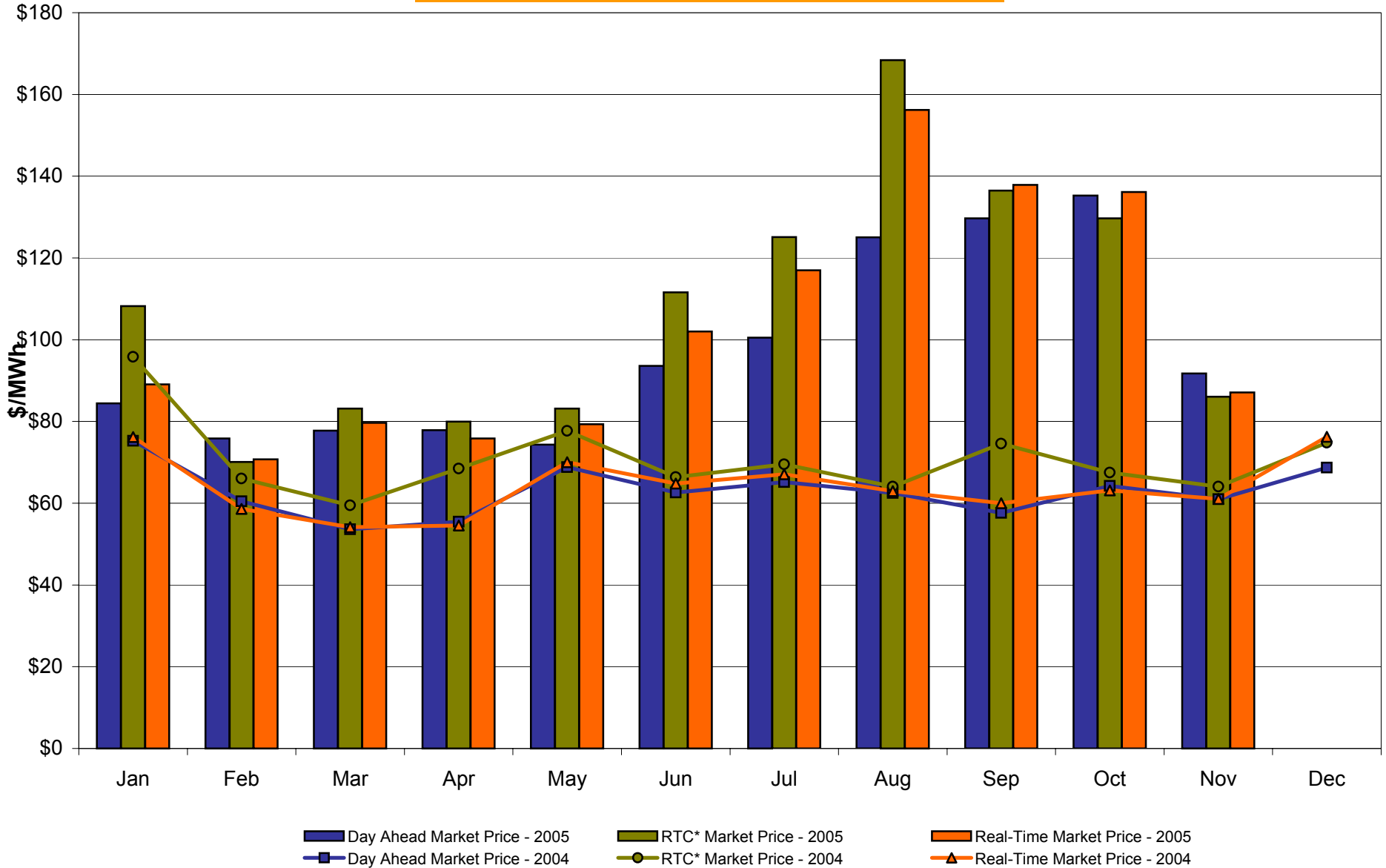
* Referred to as RTC beginning February 2005
Prior to February 2005 known as BME or Hour Ahead Market (HAM)

NYC Zone J Monthly Average LBMP Prices 2004 - 2005



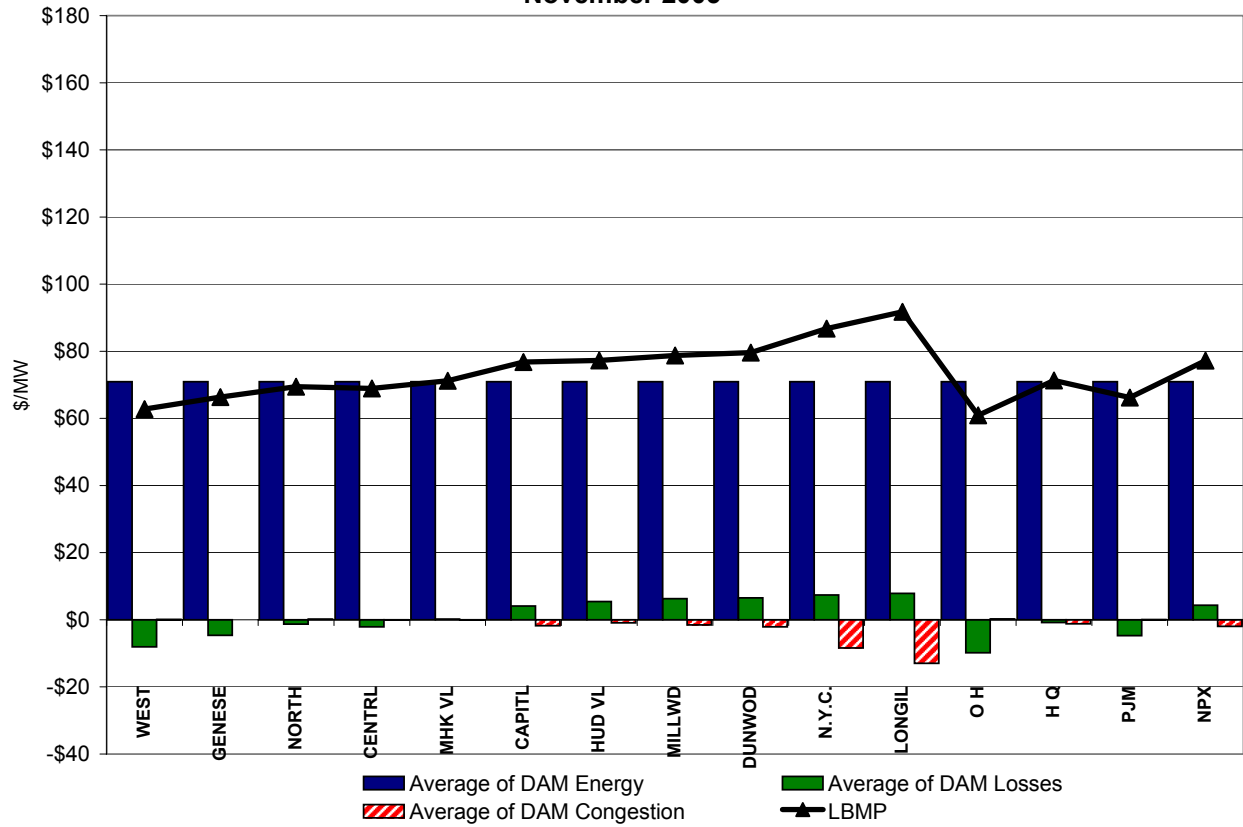
* Referred to as RTC beginning February 2005
 Prior to February 2005 known as BME or Hour Ahead Market (HAM)

Long Island Zone K Monthly Average LBMP Prices 2004 - 2005

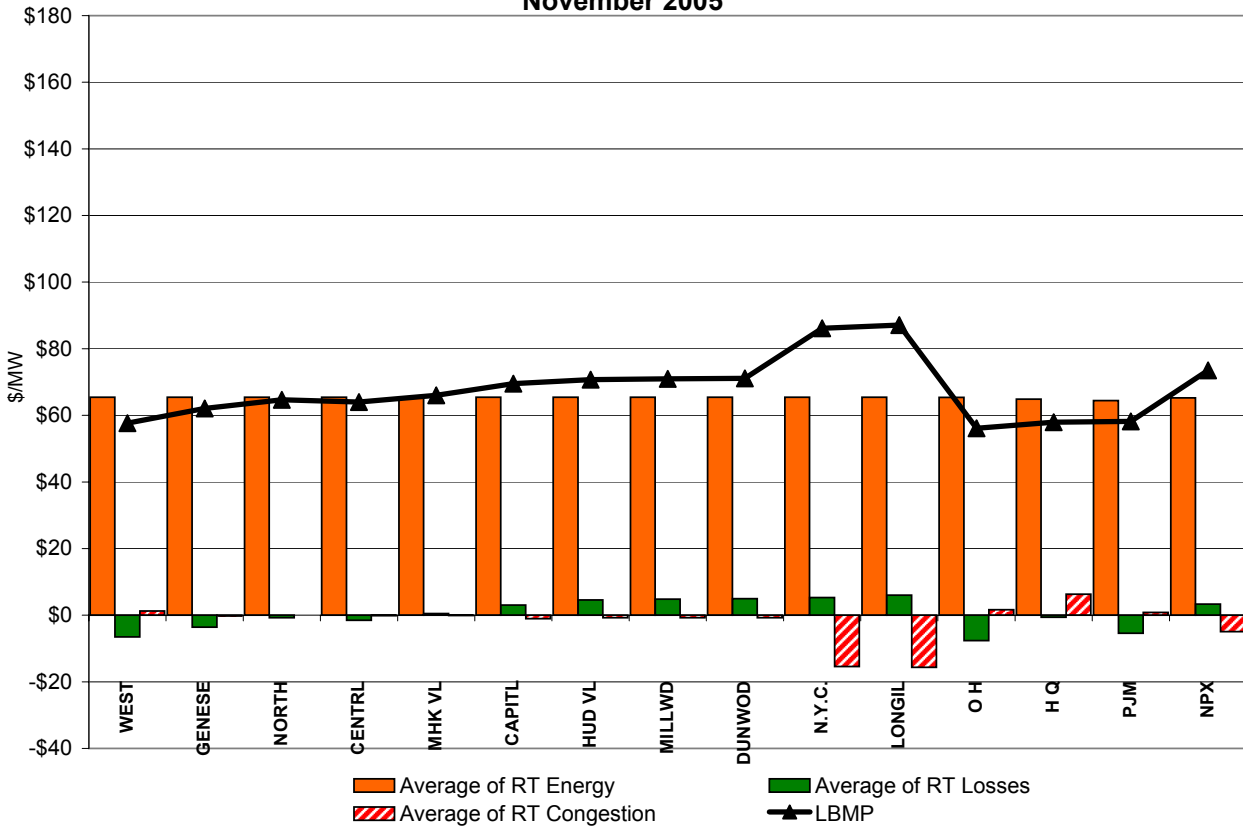


* Referred to as RTC beginning February 2005
 Prior to February 2005 known as BME or Hour Ahead Market (HAM)

**DAM Zonal Unweighted Monthly Average LBMP Components
November 2005**

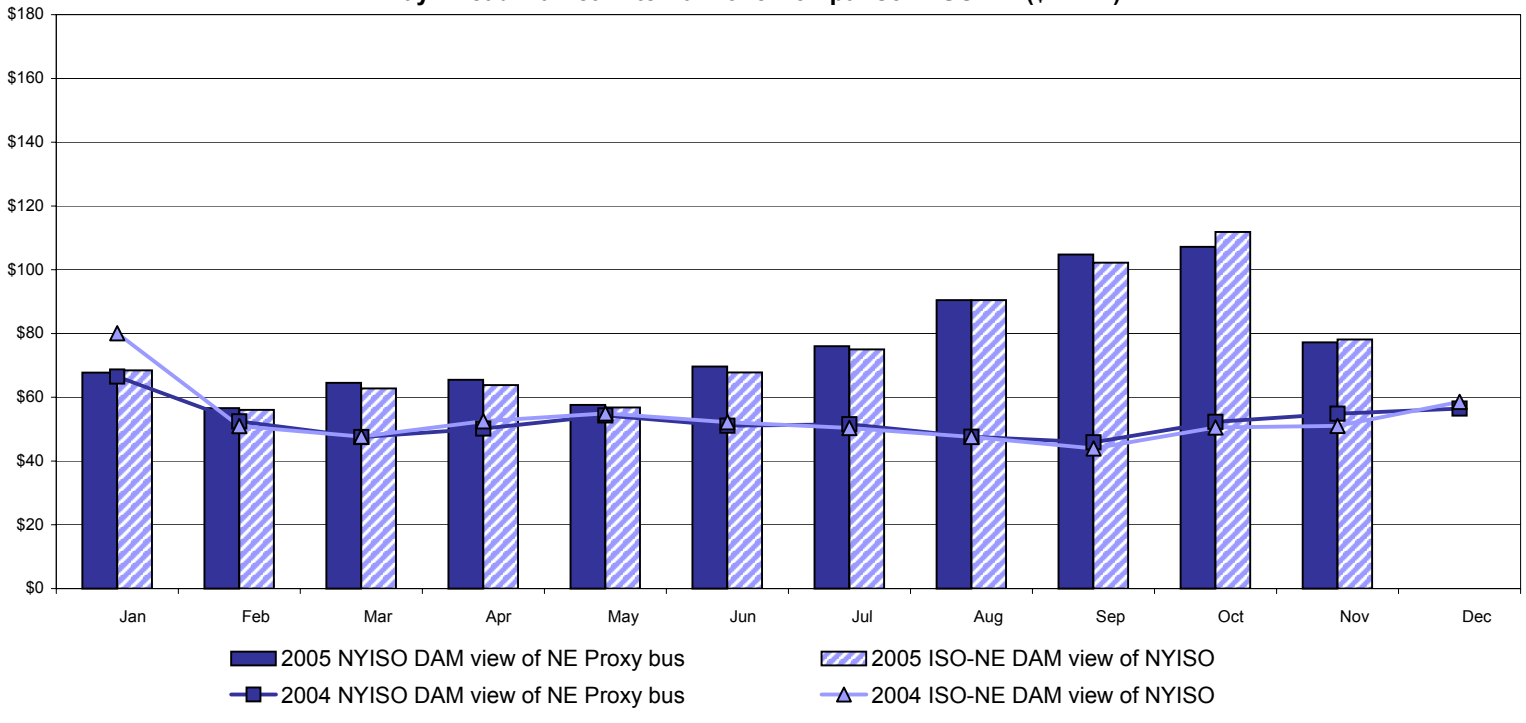


**RT Zonal Unweighted Monthly Average LBMP Components
November 2005**

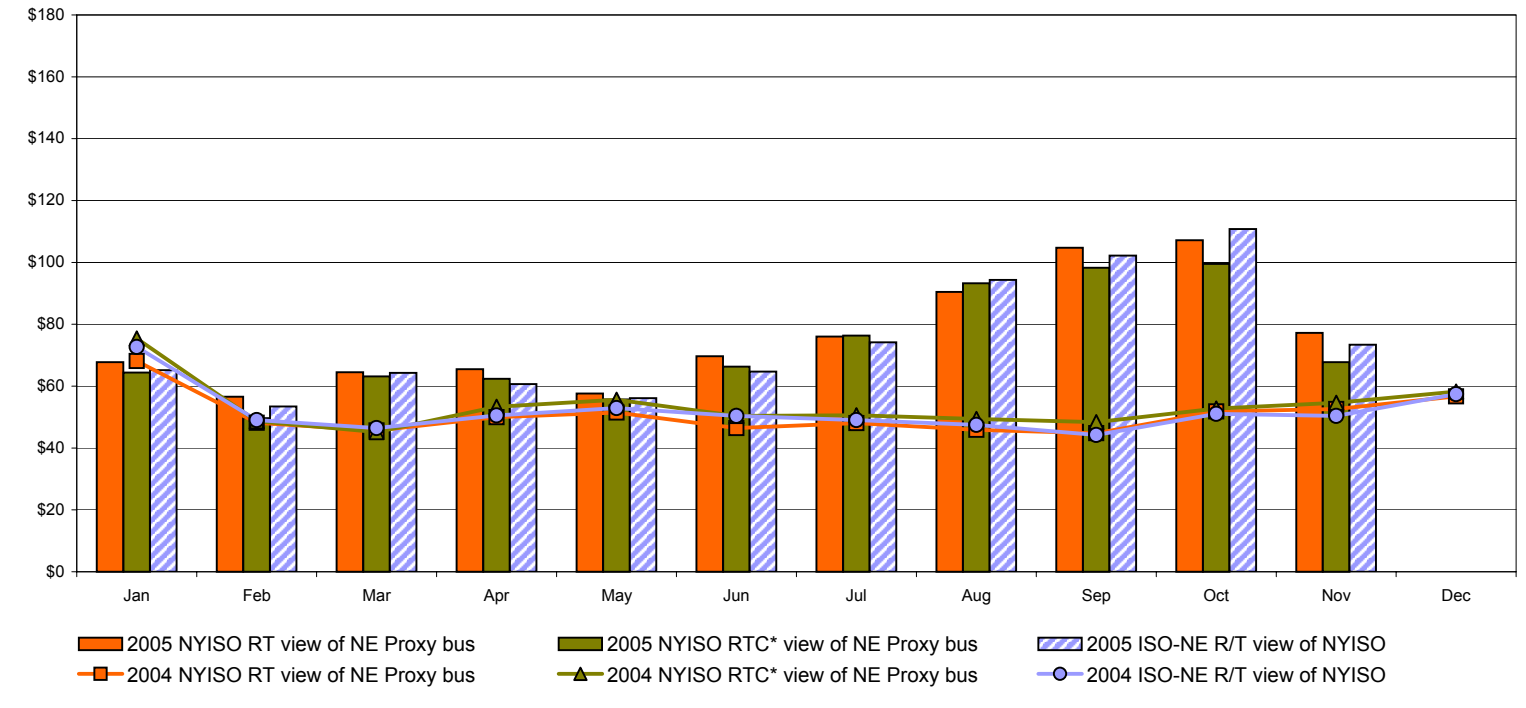


External Comparison ISO-New England

Day Ahead Market External Zone Comparison: ISO-NE (\$/MWh)



Real Time Market External Zone Comparison: ISO-NE (\$/MWh)

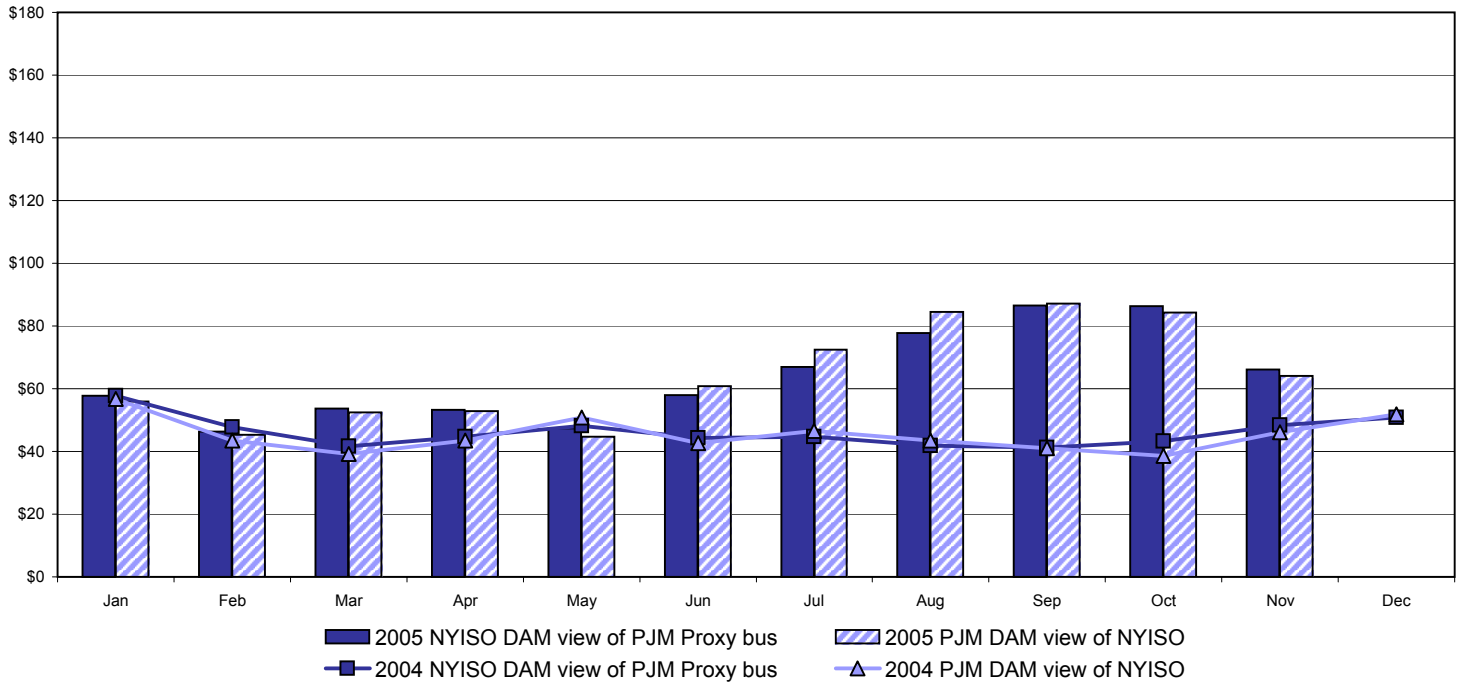


Note:
 ISO-NE Forecast is an advisory posting @ 18:00 day before.
 The DAM and R/T prices at the Roseton interface are used for ISO-NE.
 The DAM and R/T prices at the SandyPond interface are used for NYISO.

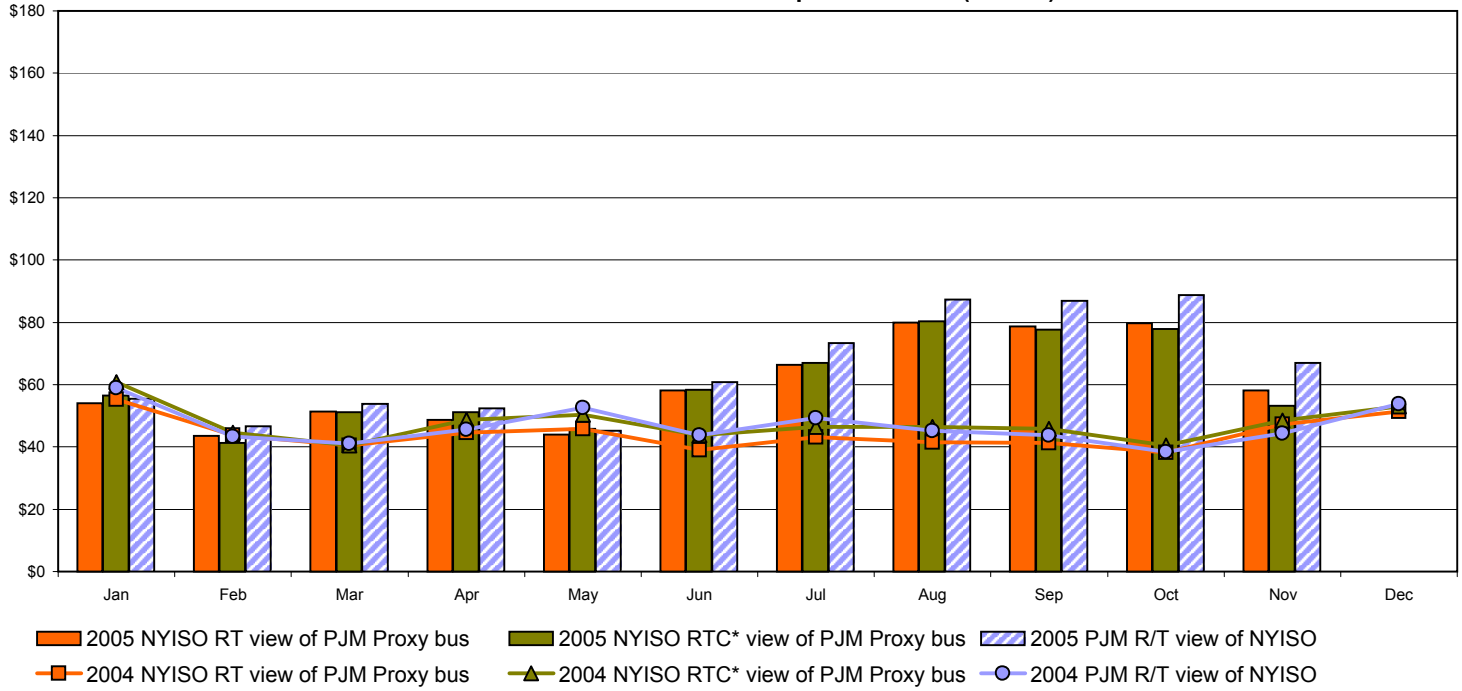
* Referred to as RTC beginning February 2005
 Prior to February 2005 known as BME or Hour Ahead Market (HAM)

External Comparison PJM

Day Ahead Market External Zone Comparison - PJM (\$/MWh)

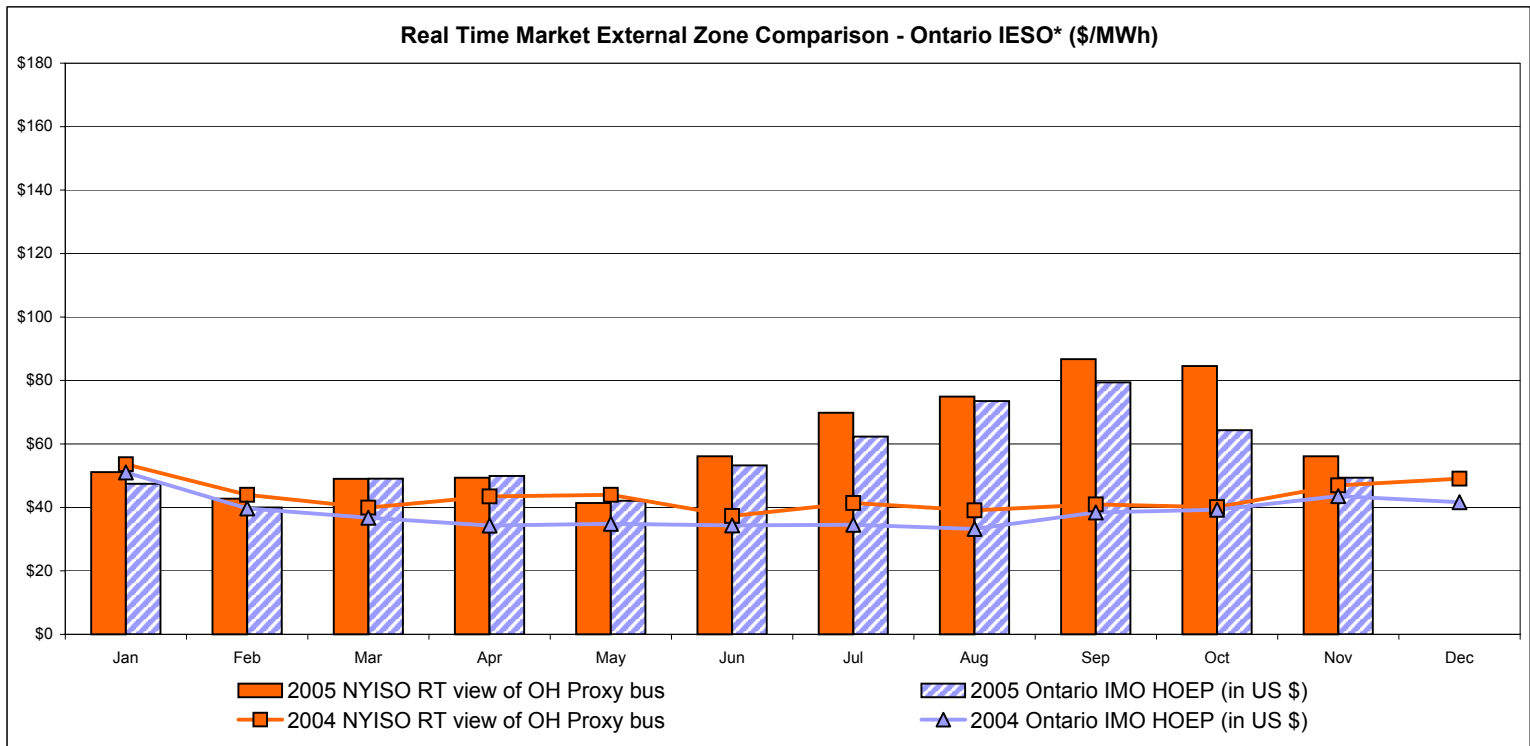
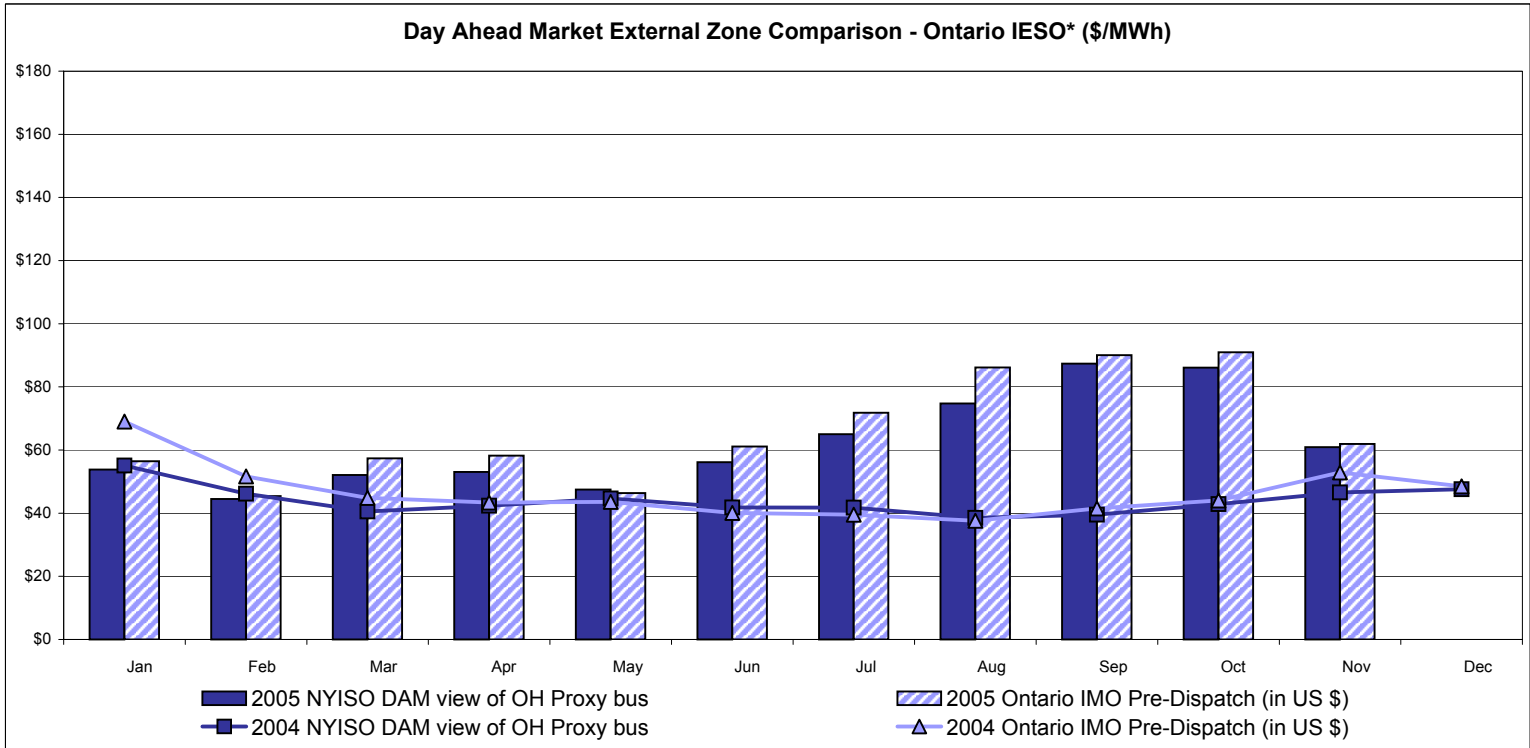


Real Time Market External Zone Comparison - PJM (\$/MWh)



* Referred to as RTC beginning February 2005
 Prior to February 2005 known as BME or Hour Ahead Market (HAM)

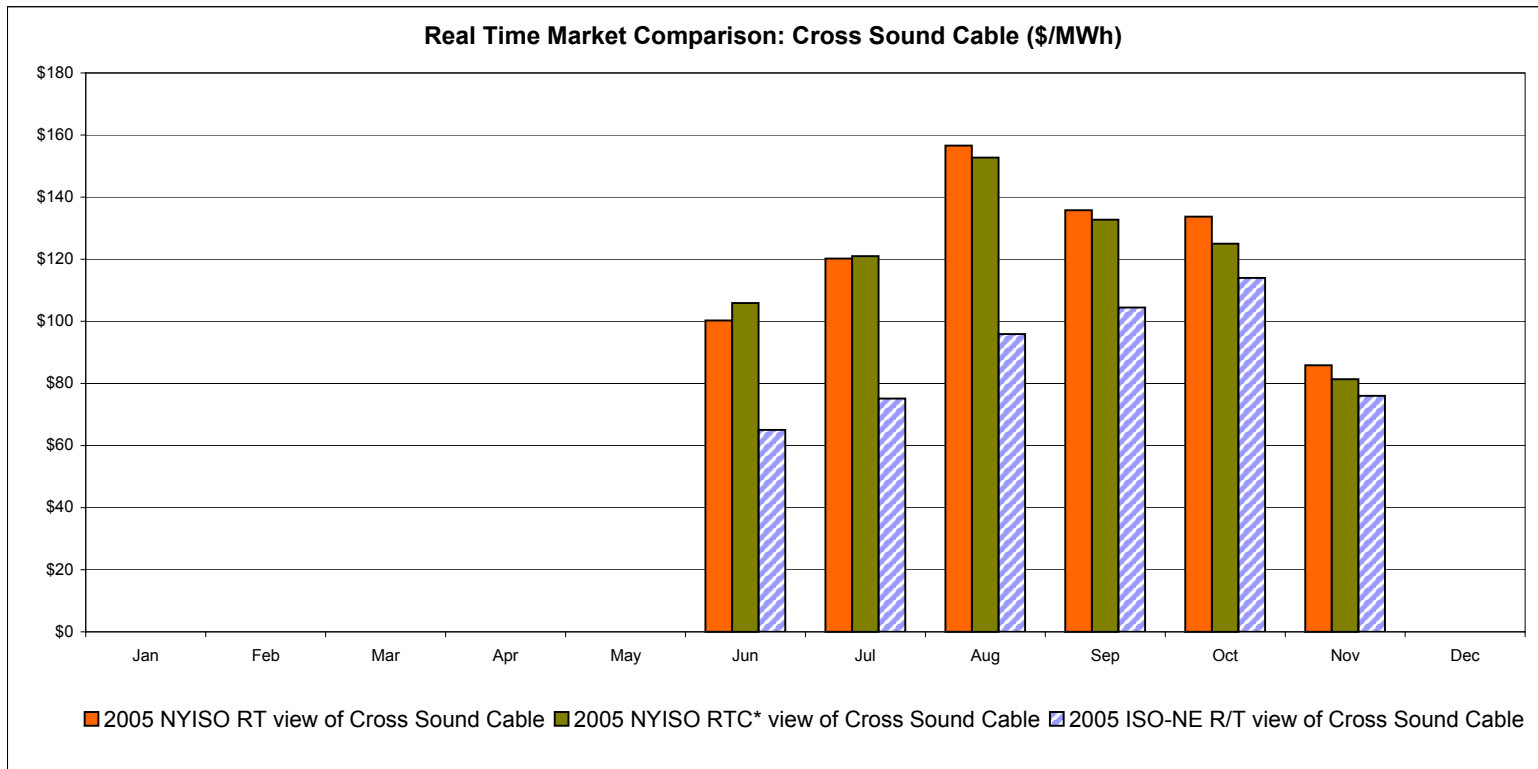
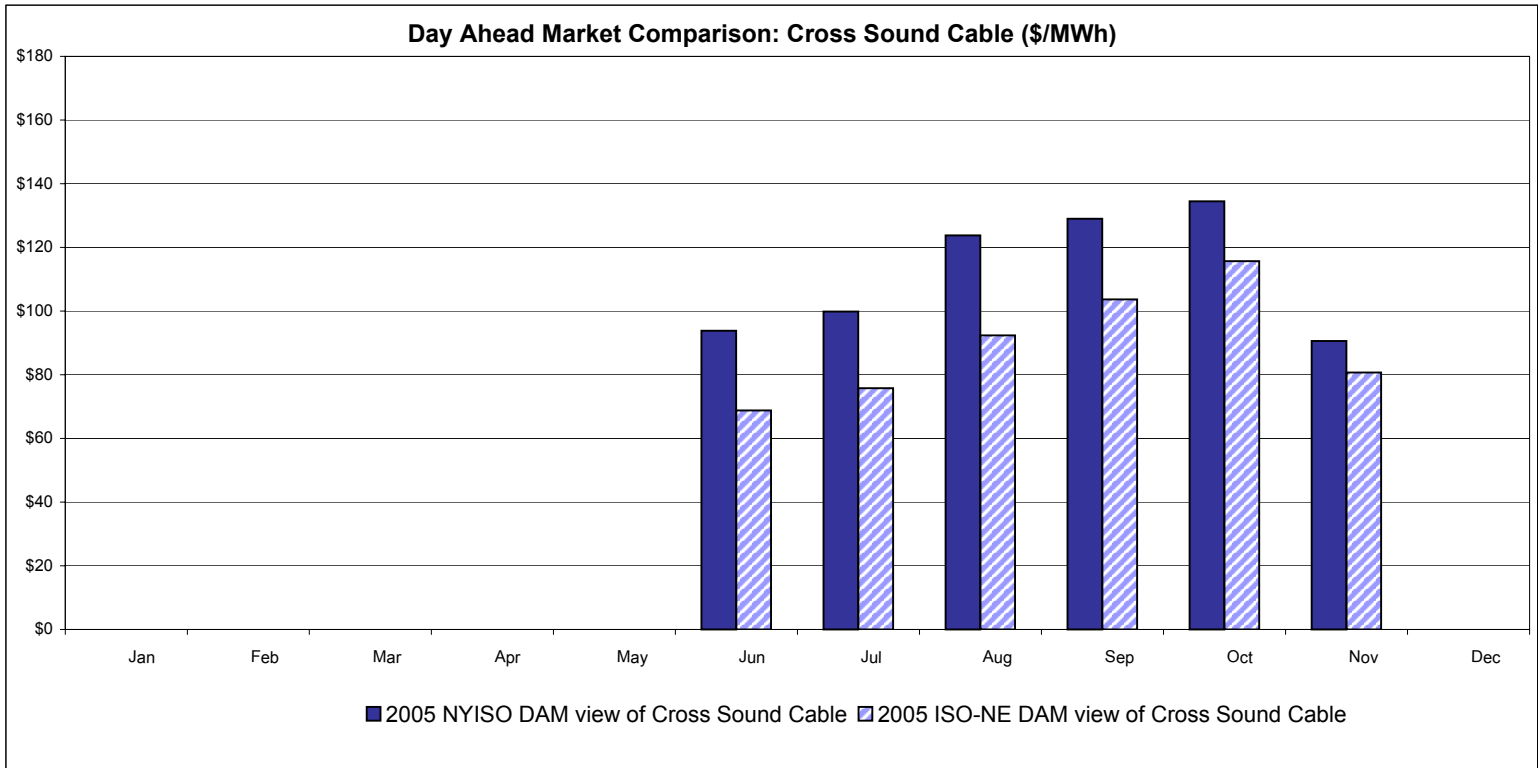
External Comparison Ontario IESO*



Notes: Exchange factor used for November 2005 was .85 to US \$
 HOEP: Hourly Ontario Energy Price
 Pre-Dispatch: Projected Energy Price

* Independent Electricity System Operator formerly known as the Independent Electricity Market Operator (IMO)

External Controllable Line: Cross Sound Cable (New England)



Note:

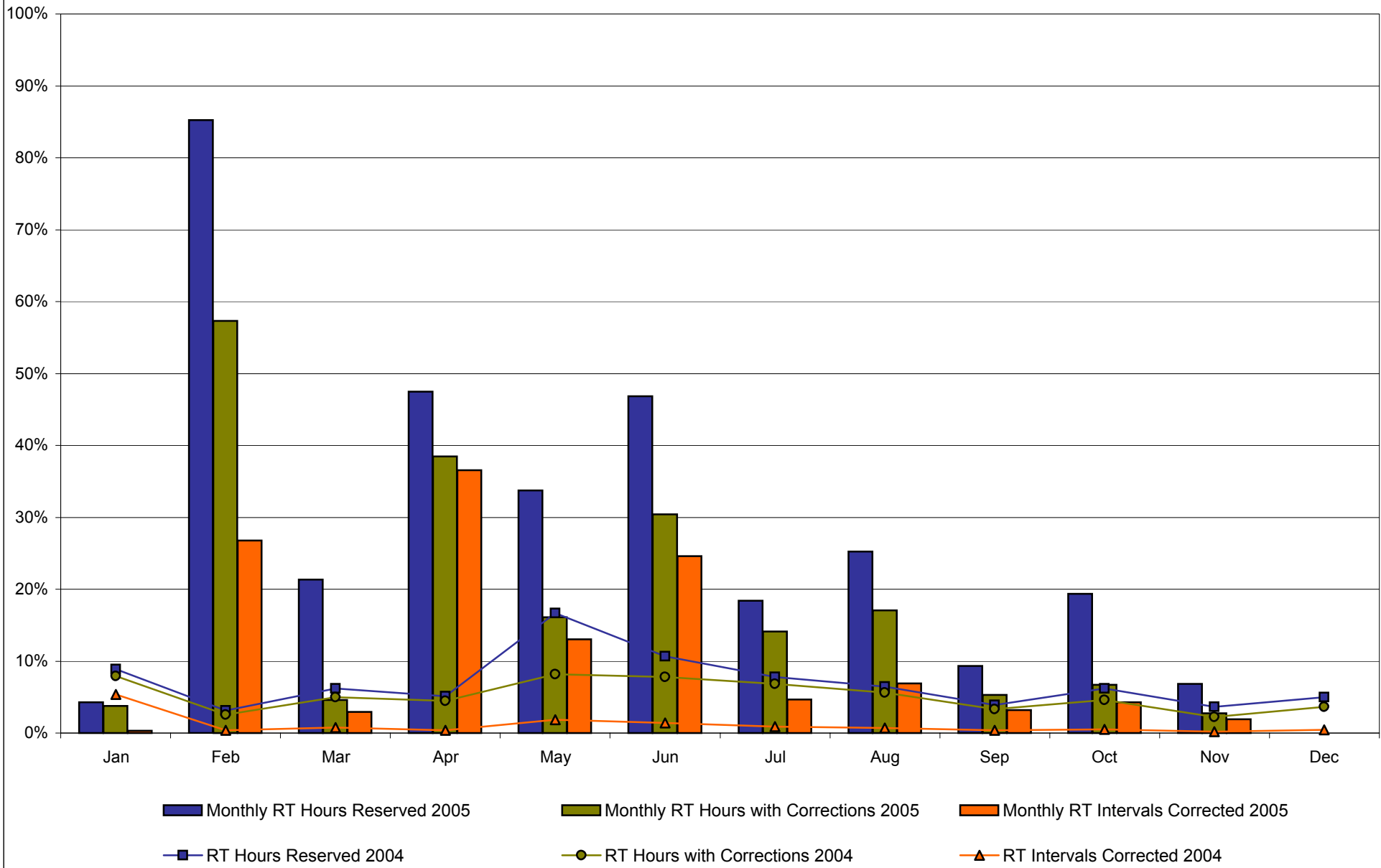
ISO-NE Forecast is an advisory posting @ 18:00 day before.
 The DAM and R/T prices at the Shorham138 99 interface are used for ISO-NE.
 The DAM and R/T prices at the CSC interface are used for NYISO.

* Referred to as RTC beginning February 2005
 Prior to February 2005 known as BME or Hour Ahead Market (HAM)

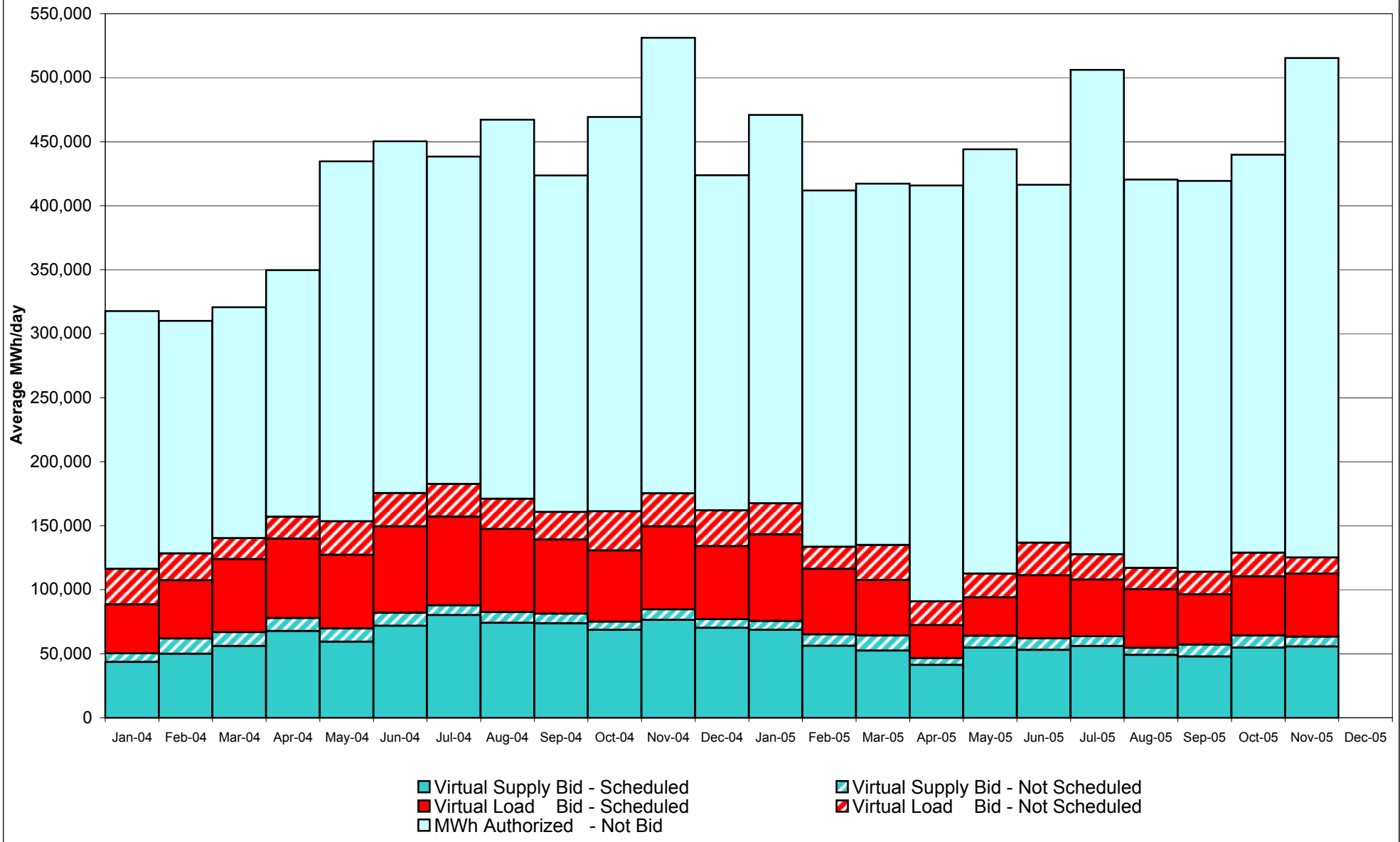
NYISO Real Time Price Correction Statistics

| 2005 | | <u>January</u> | <u>February</u> | <u>March</u> | <u>April</u> | <u>May</u> | <u>June</u> | <u>July</u> | <u>August</u> | <u>September</u> | <u>October</u> | <u>November</u> | <u>December</u> |
|----------------------------------|--------------|----------------|-----------------|--------------|--------------|------------|-------------|-------------|---------------|------------------|----------------|-----------------|-----------------|
| Hour Corrections | | | | | | | | | | | | | |
| Number of hours with corrections | in the month | 28 | 385 | 34 | 277 | 120 | 219 | 105 | 127 | 38 | 50 | 20 | |
| Number of hours | in the month | 744 | 672 | 744 | 720 | 744 | 720 | 744 | 744 | 720 | 744 | 720 | |
| % of hours with corrections | in the month | 3.76% | 57.29% | 4.57% | 38.47% | 16.13% | 30.42% | 14.11% | 17.07% | 5.28% | 6.72% | 2.78% | |
| Number of hours with corrections | year-to-date | 28 | 413 | 447 | 724 | 844 | 1,063 | 1,168 | 1,295 | 1,333 | 1,383 | 1,403 | |
| Number of hours | year-to-date | 744 | 1,416 | 2,160 | 2,880 | 3,624 | 4,344 | 5,088 | 5,832 | 6,552 | 7,296 | 8,016 | |
| % of hours with corrections | year-to-date | 3.76% | 29.17% | 20.69% | 25.14% | 23.29% | 24.47% | 22.96% | 22.21% | 20.34% | 18.96% | 17.50% | |
| Interval Corrections | | | | | | | | | | | | | |
| Number of intervals corrected | in the month | 37 | 2,177 | 266 | 3,182 | 1,170 | 2,145 | 421 | 625 | 281 | 386 | 167 | |
| Number of intervals | in the month | 11,811 | 8,131 | 8,961 | 8,711 | 8,972 | 8,729 | 9,024 | 9,065 | 8,741 | 9,029 | 8,721 | |
| % of intervals corrected | in the month | 0.31% | 26.77% | 2.97% | 36.53% | 13.04% | 24.57% | 4.67% | 6.89% | 3.21% | 4.28% | 1.91% | |
| Number of intervals corrected | year-to-date | 37 | 2,214 | 2,480 | 5,662 | 6,832 | 8,977 | 9,398 | 10,023 | 10,304 | 10,690 | 10,857 | |
| Number of intervals | year-to-date | 11,811 | 19,942 | 28,903 | 37,614 | 46,586 | 55,315 | 64,339 | 73,404 | 82,145 | 91,174 | 99,895 | |
| % of intervals corrected | year-to-date | 0.31% | 11.10% | 8.58% | 15.05% | 14.67% | 16.23% | 14.61% | 13.65% | 12.54% | 11.72% | 10.87% | |
| Hours Reserved | | | | | | | | | | | | | |
| Number of hours reserved | in the month | 32 | 573 | 159 | 342 | 251 | 337 | 137 | 188 | 67 | 144 | 49 | |
| Number of hours | in the month | 744 | 672 | 744 | 720 | 744 | 720 | 744 | 744 | 720 | 744 | 720 | |
| % of hours reserved | in the month | 4.30% | 85.27% | 21.37% | 47.50% | 33.74% | 46.81% | 18.41% | 25.27% | 9.31% | 19.35% | 6.81% | |
| Number of hours reserved | year-to-date | 32 | 605 | 764 | 1,106 | 1,357 | 1,694 | 1,831 | 2,019 | 2,086 | 2,230 | 2,279 | |
| Number of hours | year-to-date | 744 | 1,416 | 2,160 | 2,880 | 3,624 | 4,344 | 5,088 | 5,832 | 6,552 | 7,296 | 8,016 | |
| % of hours reserved | year-to-date | 4.30% | 42.73% | 35.37% | 38.40% | 37.44% | 39.00% | 35.99% | 34.62% | 31.84% | 30.56% | 28.43% | |
| Days Without Corrections | | | | | | | | | | | | | |
| Days without corrections | in the month | 12 | 4 | 16 | 3 | 4 | 4 | 6 | 6 | 17 | 17 | 22 | |
| Days without corrections | year-to-date | 12 | 16 | 32 | 35 | 39 | 43 | 49 | 55 | 72 | 89 | 111 | |
| 2004 | | <u>January</u> | <u>February</u> | <u>March</u> | <u>April</u> | <u>May</u> | <u>June</u> | <u>July</u> | <u>August</u> | <u>September</u> | <u>October</u> | <u>November</u> | <u>December</u> |
| Hour Corrections | | | | | | | | | | | | | |
| Number of hours with corrections | in the month | 59 | 18 | 37 | 32 | 61 | 56 | 51 | 42 | 24 | 34 | 16 | 27 |
| Number of hours | in the month | 744 | 696 | 744 | 720 | 744 | 720 | 744 | 744 | 720 | 744 | 720 | 744 |
| % of hours with corrections | in the month | 7.93% | 2.59% | 4.97% | 4.44% | 8.20% | 7.78% | 6.85% | 5.65% | 3.33% | 4.57% | 2.22% | 3.63% |
| Number of hours with corrections | year-to-date | 59 | 77 | 114 | 146 | 207 | 263 | 314 | 356 | 380 | 414 | 430 | 457 |
| Number of hours | year-to-date | 744 | 1,440 | 2,184 | 2,904 | 3,648 | 4,368 | 5,112 | 5,856 | 6,576 | 7,320 | 8,040 | 8,784 |
| % of hours with corrections | year-to-date | 7.93% | 5.35% | 5.22% | 5.03% | 5.67% | 6.02% | 6.14% | 6.08% | 5.78% | 5.66% | 5.35% | 5.20% |
| Interval Corrections | | | | | | | | | | | | | |
| Number of intervals corrected | in the month | 597 | 40 | 83 | 40 | 220 | 156 | 100 | 84 | 42 | 56 | 19 | 52 |
| Number of intervals | in the month | 11,089 | 10,495 | 11,085 | 10,805 | 11,740 | 11,234 | 11,467 | 11,552 | 11,178 | 11,515 | 11,217 | 11,790 |
| % of intervals corrected | in the month | 5.38% | 0.38% | 0.75% | 0.37% | 1.87% | 1.39% | 0.87% | 0.73% | 0.38% | 0.49% | 0.17% | 0.44% |
| Number of intervals corrected | year-to-date | 597 | 637 | 720 | 760 | 980 | 1,136 | 1,236 | 1,320 | 1,362 | 1,418 | 1,437 | 1,489 |
| Number of intervals | year-to-date | 11,089 | 21,584 | 32,669 | 43,474 | 55,214 | 66,448 | 77,915 | 89,467 | 100,645 | 112,160 | 123,377 | 135,167 |
| % of intervals corrected | year-to-date | 5.38% | 2.95% | 2.20% | 1.75% | 1.77% | 1.71% | 1.59% | 1.48% | 1.35% | 1.26% | 1.16% | 1.10% |
| Hours Reserved | | | | | | | | | | | | | |
| Number of hours reserved | in the month | 66 | 22 | 46 | 37 | 124 | 77 | 58 | 48 | 28 | 46 | 26 | 37 |
| Number of hours | in the month | 744 | 696 | 744 | 720 | 744 | 720 | 744 | 744 | 720 | 744 | 720 | 744 |
| % of hours reserved | in the month | 8.87% | 3.16% | 6.18% | 5.14% | 16.67% | 10.69% | 7.80% | 6.45% | 3.89% | 6.18% | 3.61% | 4.97% |
| Number of hours reserved | year-to-date | 66 | 88 | 134 | 171 | 295 | 372 | 430 | 478 | 506 | 552 | 578 | 615 |
| Number of hours | year-to-date | 744 | 1,440 | 2,184 | 2,904 | 3,648 | 4,368 | 5,112 | 5,856 | 6,576 | 7,320 | 8,040 | 8,784 |
| % of hours reserved | year-to-date | 8.87% | 6.11% | 6.14% | 5.89% | 8.09% | 8.52% | 8.41% | 8.16% | 7.69% | 7.54% | 7.19% | 7.00% |
| Days Without Corrections | | | | | | | | | | | | | |
| Days without corrections | in the month | 14 | 20 | 11 | 9 | 8 | 6 | 9 | 12 | 12 | 14 | 19 | 15 |
| Days without corrections | year-to-date | 14 | 34 | 45 | 54 | 62 | 68 | 77 | 89 | 101 | 115 | 134 | 149 |

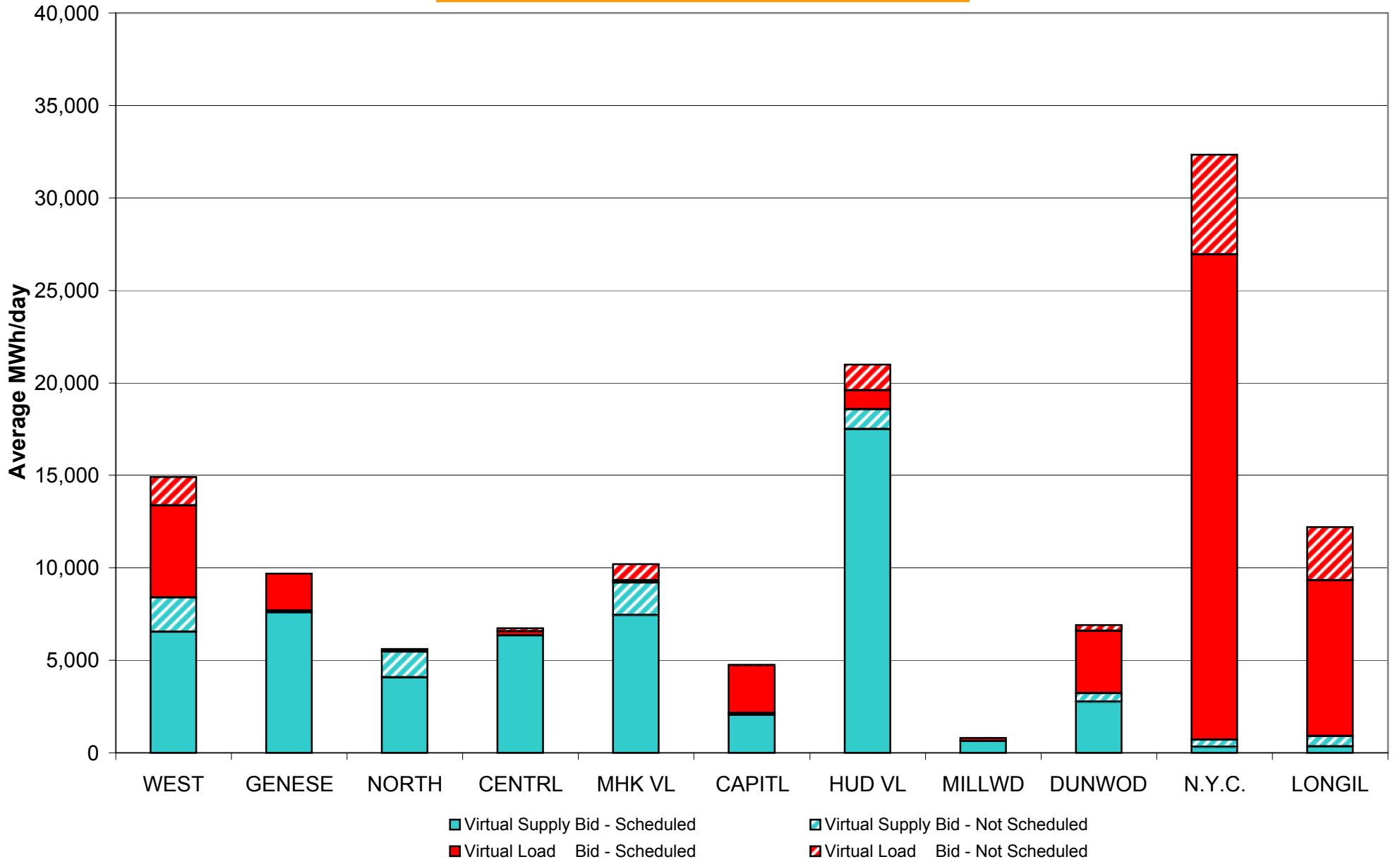
Percentage of Real-Time Corrections



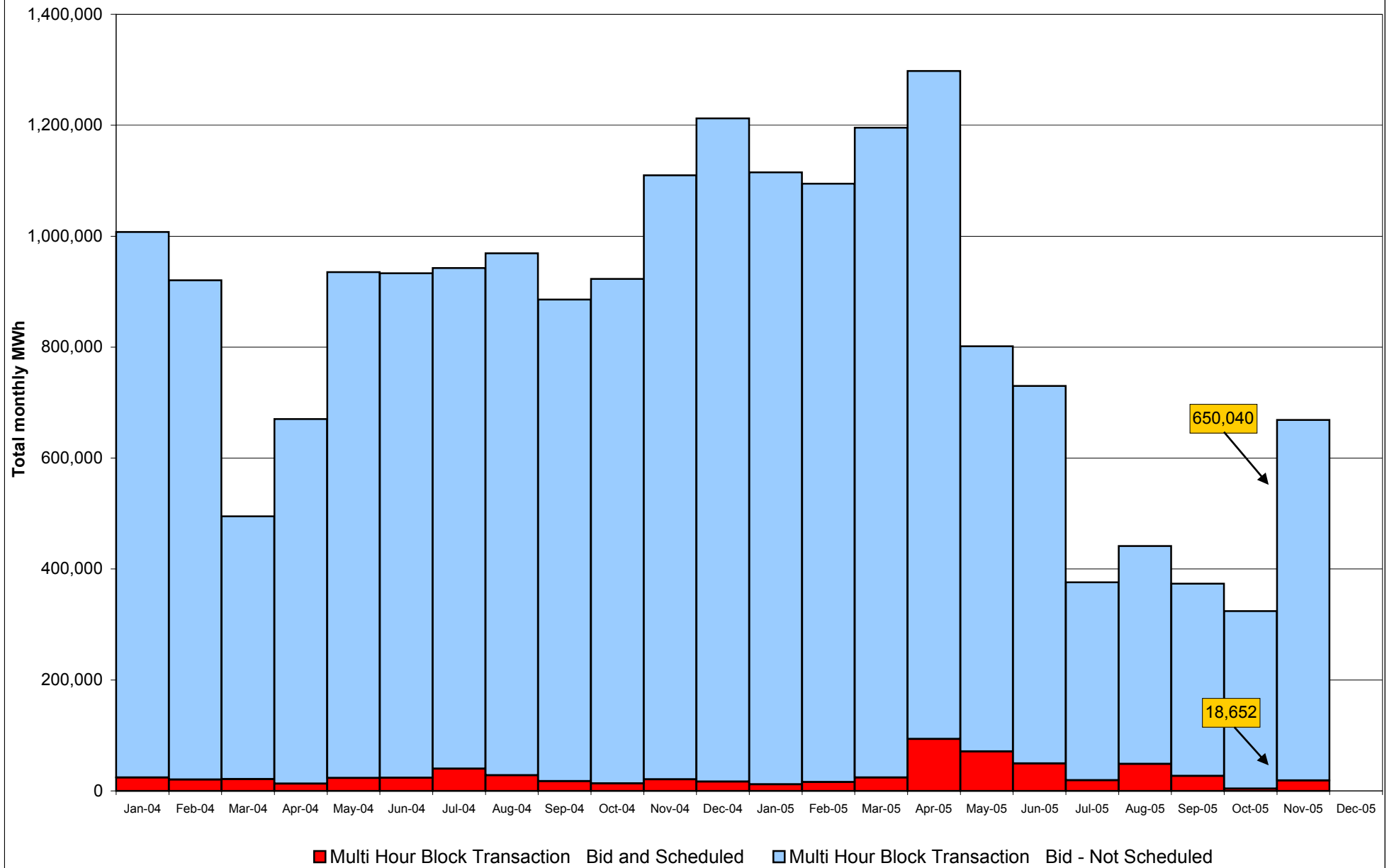
**NYISO Virtual Trading
Average MWh per day**



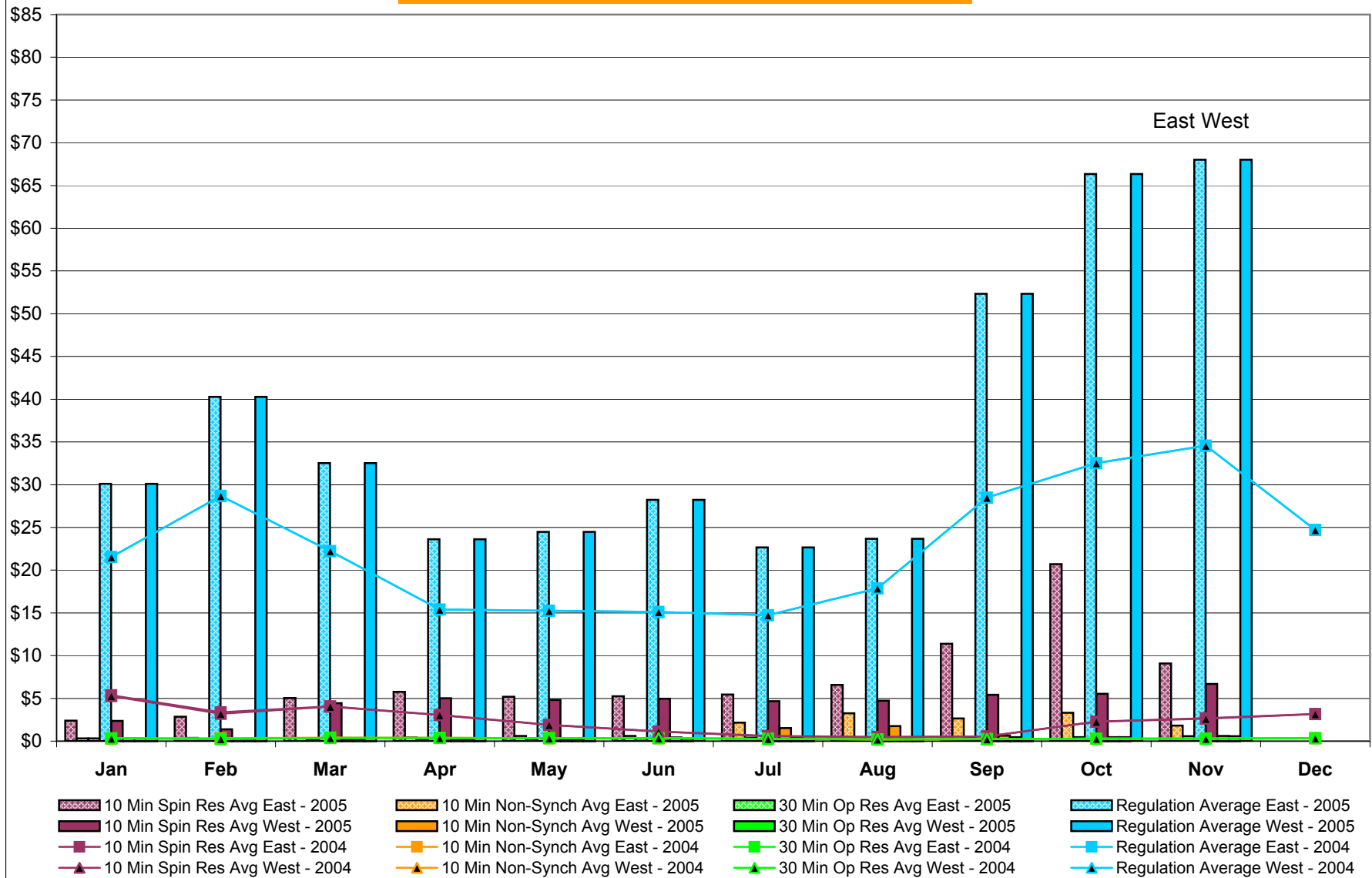
Virtual Load and Supply Zonal Statistics November 2005



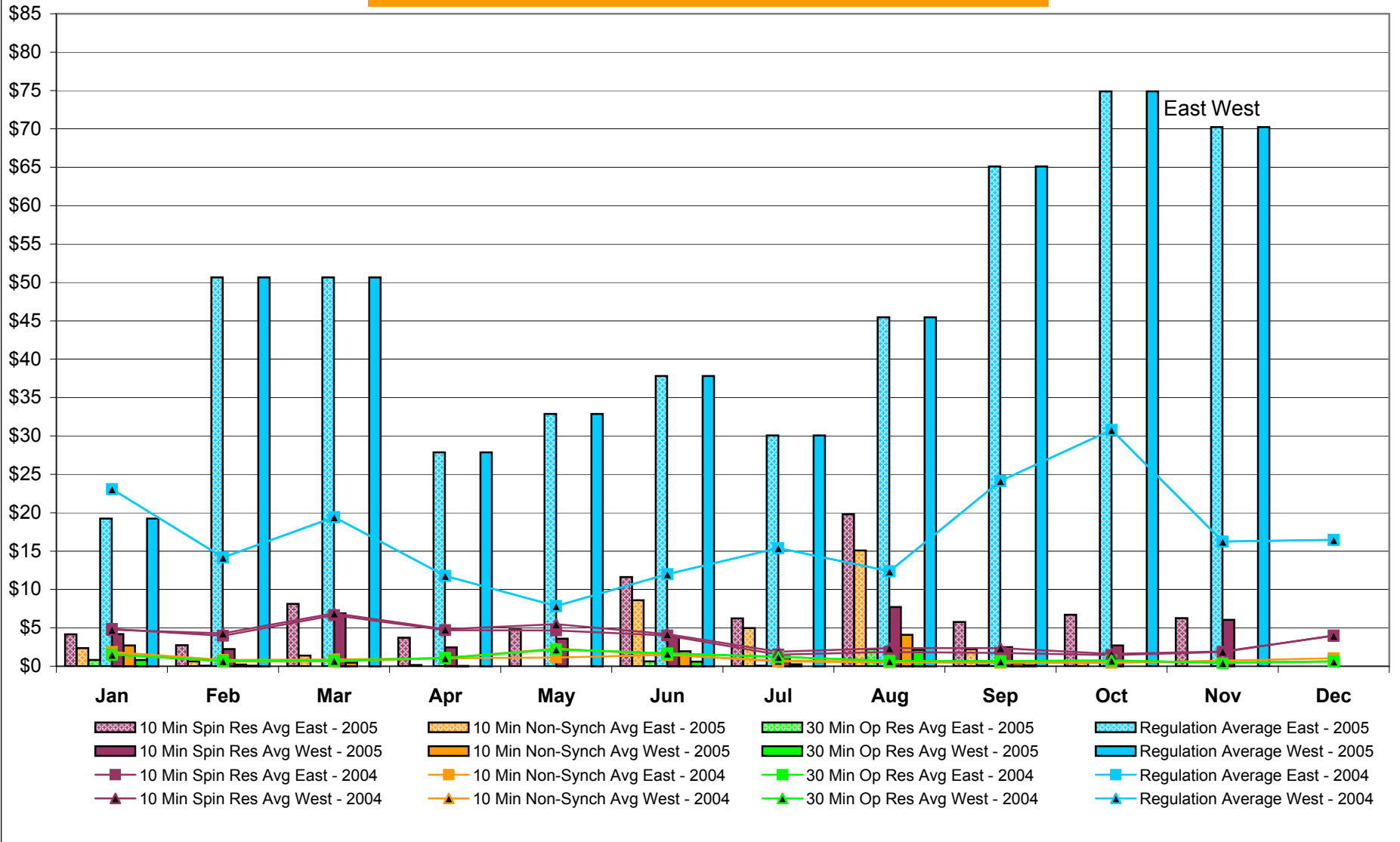
NYISO Multi Hour Block Transactions Monthly Total MWh



NYISO Monthly Average Ancillary Service Prices Day Ahead Market 2004 - 2005

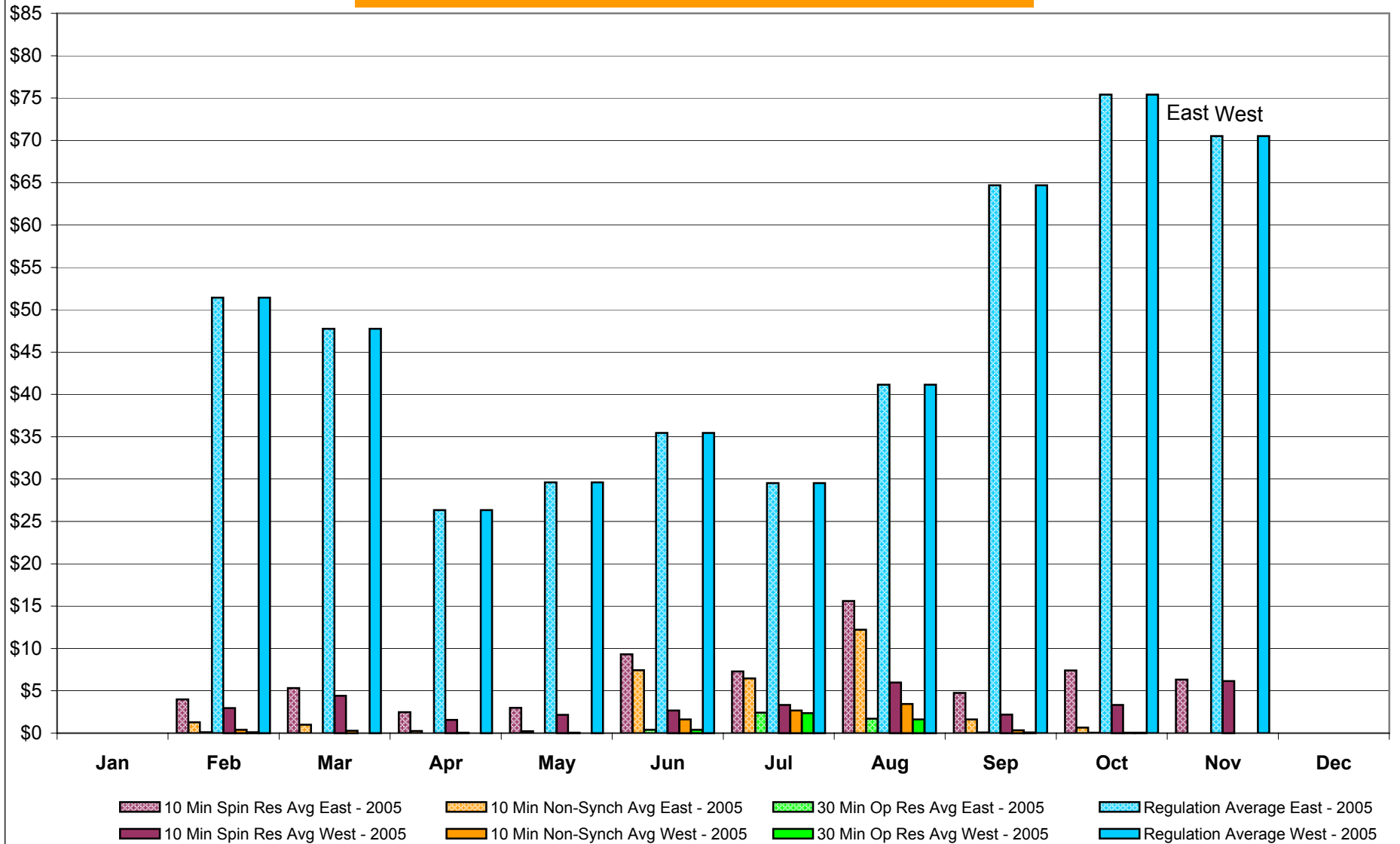


NYISO Monthly Average Ancillary Service Prices RTC* Market 2004 - 2005



* Referred to as RTC beginning February 2005
Prior to February 2005 known as BME or Hour Ahead Market (HAM)

NYISO Monthly Average Ancillary Service Prices Real Time Market* 2004 - 2005



* The Real Time Ancillary Market began in February 2005

NYISO Markets Ancillary Services Statistics

ANCILLARY SERVICES Unweighted Price (\$/MWH) 2005

| | <u>January</u> | <u>February</u> | <u>March</u> | <u>April</u> | <u>May</u> | <u>June</u> | <u>July</u> | <u>August</u> | <u>September</u> | <u>October</u> | <u>November</u> | <u>December</u> |
|----------------------------------|----------------|-----------------|--------------|--------------|------------|-------------|-------------|---------------|------------------|----------------|-----------------|-----------------|
| <u>Day Ahead Market</u> | | | | | | | | | | | | |
| 10 Min Spin East | 2.38 | 2.87 | 5.06 | 5.76 | 5.19 | 5.26 | 5.44 | 6.59 | 11.38 | 20.70 | 9.08 | |
| 10 Min Spin West | 2.37 | 1.39 | 4.43 | 5.03 | 4.80 | 4.96 | 4.68 | 4.73 | 5.41 | 5.54 | 6.68 | |
| 10 Min Non Synch East | 0.31 | 0.37 | 0.31 | 0.44 | 0.60 | 0.61 | 2.16 | 3.25 | 2.65 | 3.31 | 1.82 | |
| 10 Min Non Synch West | 0.31 | 0.13 | 0.20 | 0.24 | 0.23 | 0.43 | 1.54 | 1.75 | 0.63 | 0.47 | 0.59 | |
| 30 Min East | 0.31 | 0.13 | 0.19 | 0.24 | 0.22 | 0.29 | 0.41 | 0.44 | 0.47 | 0.46 | 0.57 | |
| 30 Min West | 0.31 | 0.13 | 0.19 | 0.24 | 0.22 | 0.29 | 0.41 | 0.44 | 0.47 | 0.46 | 0.57 | |
| Regulation East | 30.10 | 40.28 | 32.53 | 23.61 | 24.49 | 28.23 | 22.66 | 23.67 | 52.33 | 66.33 | 68.02 | |
| Regulation West | 30.10 | 40.28 | 32.53 | 23.61 | 24.49 | 28.23 | 22.66 | 23.67 | 52.33 | 66.33 | 68.02 | |
| <u>RTC* Market</u> | | | | | | | | | | | | |
| 10 Min Spin East | 4.15 | 2.75 | 8.13 | 3.71 | 4.80 | 11.61 | 6.23 | 19.80 | 5.75 | 6.72 | 6.25 | |
| 10 Min Spin West | 4.20 | 2.23 | 6.90 | 2.46 | 3.58 | 3.84 | 1.24 | 7.72 | 2.50 | 2.69 | 6.06 | |
| 10 Min Non Synch East | 2.35 | 0.62 | 1.38 | 0.14 | 0.00 | 8.58 | 4.96 | 15.08 | 2.22 | 0.44 | 0.01 | |
| 10 Min Non Synch West | 2.72 | 0.21 | 0.47 | 0.03 | 0.00 | 1.96 | 0.25 | 4.09 | 0.37 | 0.00 | 0.00 | |
| 30 Min East | 0.83 | 0.05 | 0.00 | 0.00 | 0.00 | 0.62 | 0.08 | 2.22 | 0.12 | 0.00 | 0.00 | |
| 30 Min West | 0.83 | 0.05 | 0.00 | 0.00 | 0.00 | 0.61 | 0.00 | 2.15 | 0.12 | 0.00 | 0.00 | |
| Regulation East | 19.23 | 50.66 | 50.65 | 27.85 | 32.87 | 37.80 | 30.07 | 45.47 | 65.10 | 74.90 | 70.23 | |
| Regulation West | 19.23 | 50.66 | 50.65 | 27.85 | 32.87 | 37.80 | 30.07 | 45.47 | 65.10 | 74.90 | 70.23 | |
| <u>Real Time Market**</u> | | | | | | | | | | | | |
| 10 Min Spin East | - | 3.99 | 5.34 | 2.47 | 3.00 | 9.30 | 7.30 | 15.60 | 4.75 | 7.40 | 6.32 | |
| 10 Min Spin West | - | 2.97 | 4.42 | 1.56 | 2.16 | 2.69 | 3.33 | 5.99 | 2.19 | 3.34 | 6.16 | |
| 10 Min Non Synch East | - | 1.27 | 0.98 | 0.25 | 0.24 | 7.43 | 6.46 | 12.22 | 1.63 | 0.65 | 0.00 | |
| 10 Min Non Synch West | - | 0.41 | 0.29 | 0.02 | 0.07 | 1.63 | 2.68 | 3.44 | 0.33 | 0.01 | 0.00 | |
| 30 Min East | - | 0.12 | 0.00 | 0.00 | 0.00 | 0.40 | 2.43 | 1.71 | 0.09 | 0.01 | 0.00 | |
| 30 Min West | - | 0.11 | 0.00 | 0.00 | 0.00 | 0.40 | 2.36 | 1.61 | 0.09 | 0.01 | 0.00 | |
| Regulation East | - | 51.41 | 47.74 | 26.33 | 29.62 | 35.47 | 29.52 | 41.14 | 64.70 | 75.41 | 70.52 | |
| Regulation West | - | 51.41 | 47.74 | 26.33 | 29.62 | 35.47 | 29.52 | 41.13 | 64.70 | 75.41 | 70.52 | |

ANCILLARY SERVICES Unweighted Price (\$/MWH) 2004

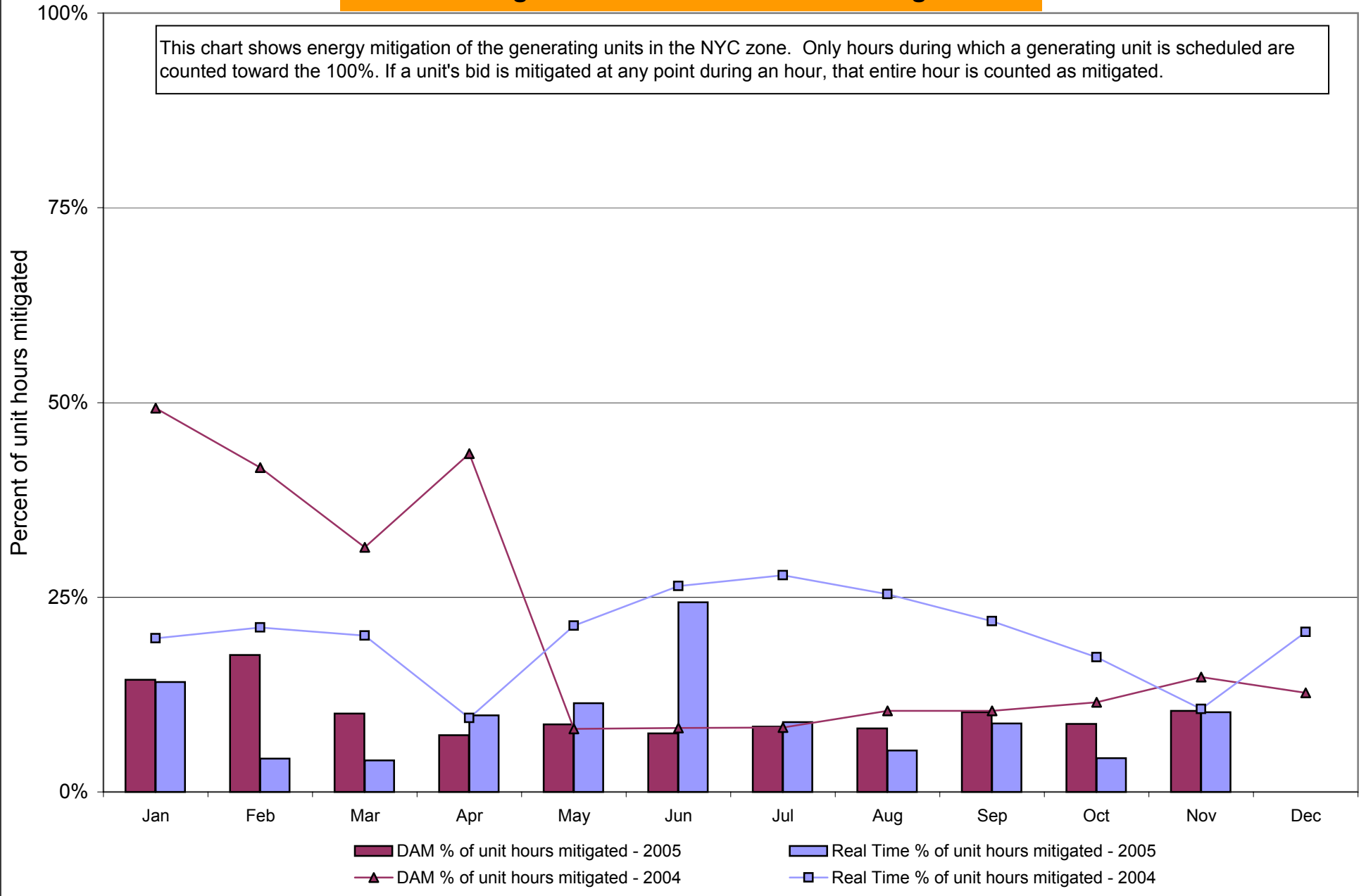
| | <u>January</u> | <u>February</u> | <u>March</u> | <u>April</u> | <u>May</u> | <u>June</u> | <u>July</u> | <u>August</u> | <u>September</u> | <u>October</u> | <u>November</u> | <u>December</u> |
|--------------------------------|----------------|-----------------|--------------|--------------|------------|-------------|-------------|---------------|------------------|----------------|-----------------|-----------------|
| <u>Day Ahead Market</u> | | | | | | | | | | | | |
| 10 Min Spin East | 5.35 | 3.36 | 4.05 | 3.04 | 1.91 | 1.11 | 0.60 | 0.49 | 0.55 | 2.28 | 2.69 | 3.17 |
| 10 Min Spin West | 5.29 | 3.20 | 4.05 | 3.04 | 1.90 | 1.11 | 0.58 | 0.47 | 0.54 | 2.27 | 2.63 | 3.16 |
| 10 Min Non Synch East | 0.33 | 0.33 | 0.39 | 0.38 | 0.34 | 0.35 | 0.27 | 0.21 | 0.23 | 0.30 | 0.30 | 0.35 |
| 10 Min Non Synch West | 0.32 | 0.27 | 0.39 | 0.38 | 0.33 | 0.35 | 0.26 | 0.20 | 0.22 | 0.29 | 0.29 | 0.34 |
| 30 Min East | 0.32 | 0.27 | 0.39 | 0.38 | 0.33 | 0.35 | 0.26 | 0.20 | 0.22 | 0.29 | 0.29 | 0.34 |
| 30 Min West | 0.32 | 0.27 | 0.39 | 0.38 | 0.33 | 0.35 | 0.26 | 0.20 | 0.22 | 0.29 | 0.29 | 0.34 |
| Regulation East | 21.54 | 28.69 | 22.23 | 15.41 | 15.26 | 15.10 | 14.74 | 17.88 | 28.50 | 32.51 | 34.56 | 24.71 |
| Regulation West | 21.54 | 28.69 | 22.23 | 15.41 | 15.26 | 15.10 | 14.74 | 17.88 | 28.50 | 32.51 | 34.56 | 24.71 |
| <u>RTC* Market</u> | | | | | | | | | | | | |
| 10 Min Spin East | 4.84 | 3.96 | 6.65 | 4.69 | 4.67 | 3.99 | 1.51 | 1.87 | 1.75 | 1.45 | 1.86 | 3.99 |
| 10 Min Spin West | 4.75 | 4.27 | 6.89 | 4.82 | 5.48 | 4.20 | 1.90 | 2.36 | 2.36 | 1.60 | 1.92 | 3.95 |
| 10 Min Non Synch East | 1.85 | 0.81 | 0.87 | 1.05 | 1.14 | 1.49 | 0.62 | 0.49 | 0.45 | 0.45 | 0.71 | 1.03 |
| 10 Min Non Synch West | 1.71 | 0.60 | 0.64 | 1.06 | 2.31 | 1.49 | 0.73 | 0.61 | 0.60 | 0.66 | 0.50 | 0.62 |
| 30 Min East | 1.51 | 0.70 | 0.72 | 1.06 | 2.20 | 1.67 | 1.23 | 0.71 | 0.67 | 0.76 | 0.45 | 0.63 |
| 30 Min West | 1.51 | 0.70 | 0.72 | 1.06 | 2.20 | 1.67 | 1.23 | 0.71 | 0.67 | 0.76 | 0.45 | 0.63 |
| Regulation East | 23.07 | 14.18 | 19.41 | 11.78 | 7.85 | 11.98 | 15.38 | 12.36 | 24.14 | 30.79 | 16.24 | 16.45 |
| Regulation West | 23.07 | 14.18 | 19.41 | 11.78 | 7.85 | 11.98 | 15.38 | 12.36 | 24.14 | 30.79 | 16.24 | 16.45 |

* Referred to as RTC beginning February 2005
 Prior to February 2005 known as BME or Hour Ahead Market (HAM)

** The Real Time Ancillary Market began in February 2005

NYISO In City Energy Mitigation (NYC Zone) 2004-2005

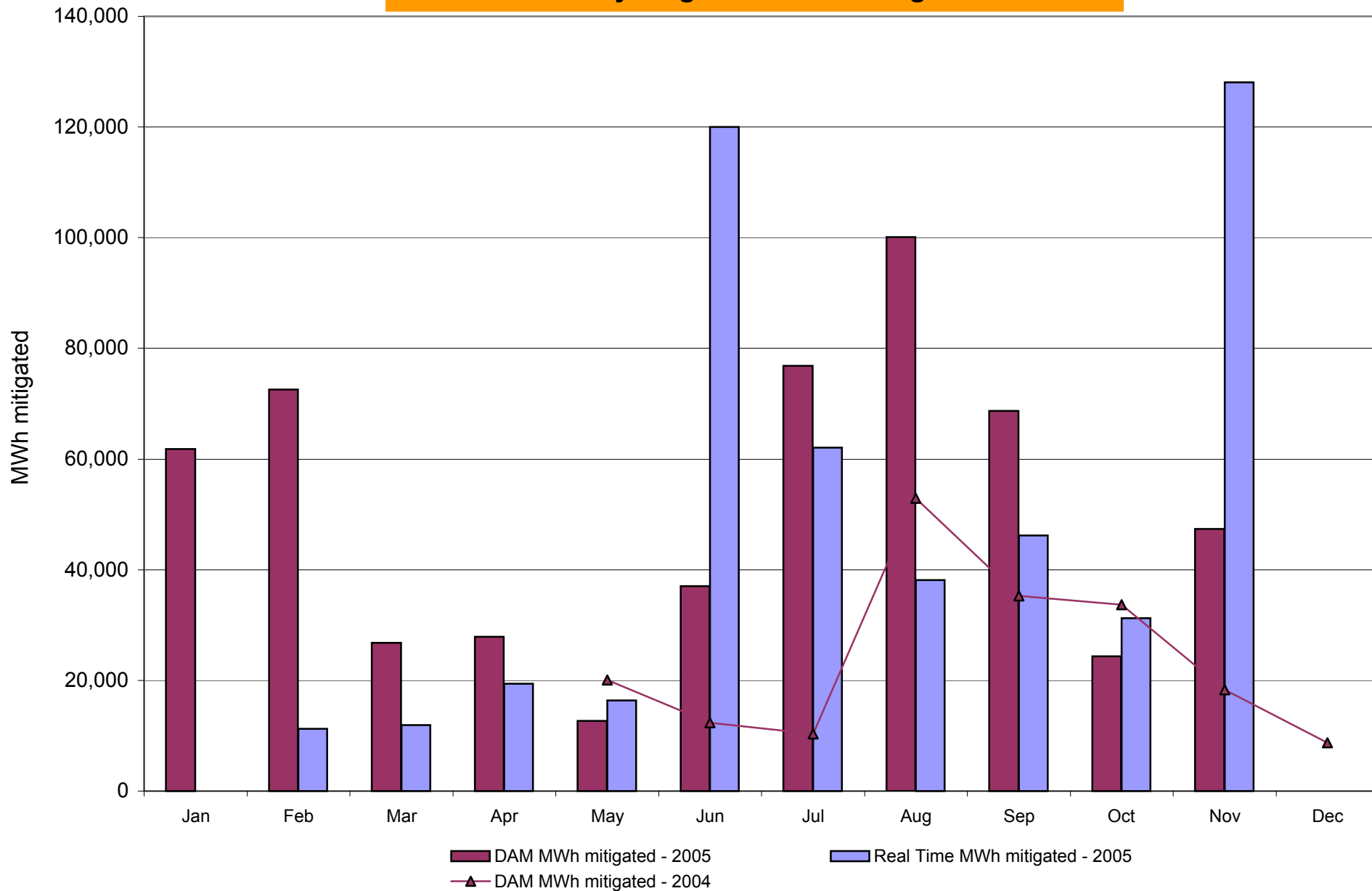
Percentage of committed unit-hours mitigated



DAM Mitigation software change deployed on 5/1/2004

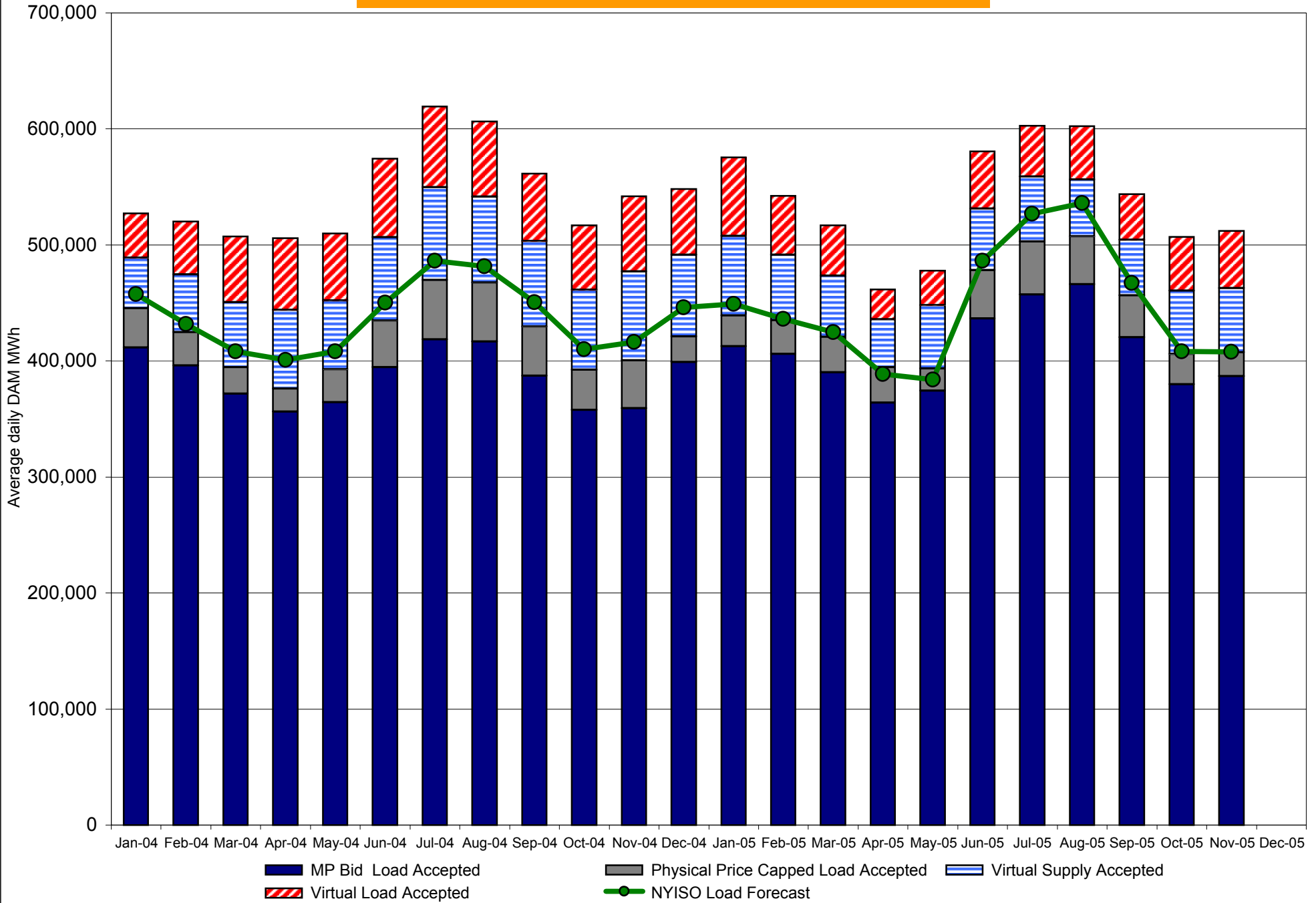
NYISO In City Energy Mitigation (NYC Zone) 2004-2005

Monthly megawatt hours mitigated

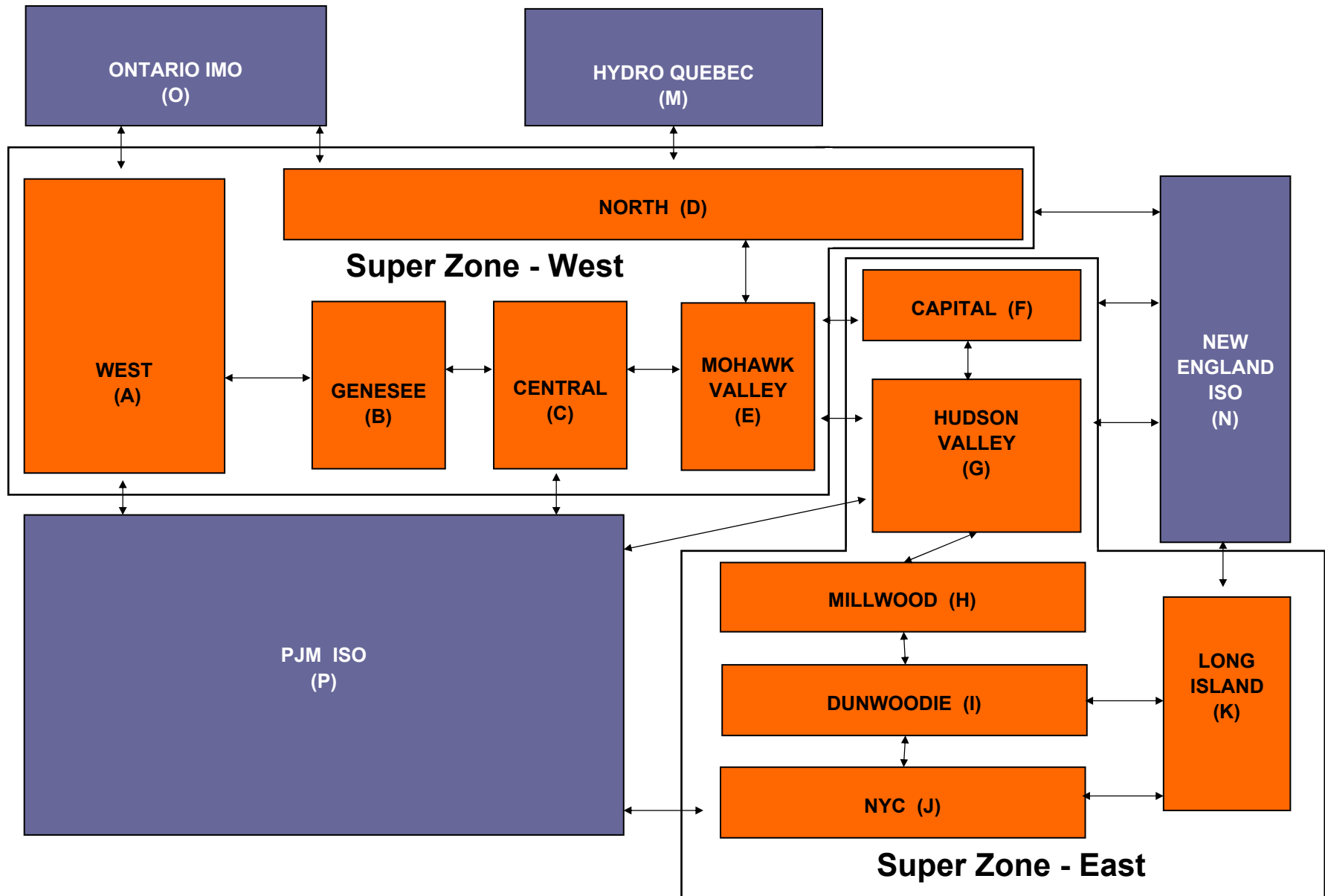


RT mitigation data available with SMD2 deployment
 DAM mitigation software change deployed on 5/1/2004

NYISO Average Daily DAM Load Bid Summary



NYISO LBMP ZONES



Billing Codes for Chart 4-C

| Chart 4-C Category Name | Billing Code | Billing Category Name |
|---|---------------------|--|
| Bid Production Cost Guarantee Balancing | 81203 | Balancing NYISO Bid Production Cost Guarantee - Internal Units |
| Bid Production Cost Guarantee Balancing | 81204 | Balancing NYISO Bid Production Cost Guarantee - External Units |
| Bid Production Cost Guarantee Balancing | 81205 | Balancing NYISO Bid Production Cost Guarantee Expenditure due to Curtailed Imports |
| Bid Production Cost Guarantee Balancing | 81208 | Balancing NYISO Bid Production Cost Guarantee - Internal Units |
| Bid Production Cost Guarantee Balancing | 81209 | Balancing NYISO Bid Production Cost Guarantee - External Units |
| Bid Production Cost Guarantee Balancing | 81213 | Balancing NYISO Bid Production Cost Guarantee Expenditure due to Curtailed Imports |
| Bid Production Cost Guarantee DAM | 81201 | DAM NYISO Bid Production Cost Guarantee - Internal Units |
| Bid Production Cost Guarantee DAM | 81202 | DAM NYISO Bid Production Cost Guarantee - External Units |
| Bid Production Cost Guarantee DAM | 81206 | DAM NYISO Bid Production Cost Guarantee - Internal Units |
| Bid Production Cost Guarantee DAM | 81207 | DAM NYISO Bid Production Cost Guarantee - External Units |
| Bid Production Cost Guarantee DAM Virtual | 81501 | DAM Virtual Bid Production Cost Guarantee |
| DAM Contract Balancing | 81315 | DAM Contract Balancing |
| DAM Contract Balancing | 81317 | DAM Contract Balancing |
| Local Reliability Balancing | 81002 | Balancing Local Reliability Bid Production Cost Guarantee |
| Local Reliability DAM | 81001 | DAM Local Reliability Bid Production Cost Guarantee |
| NYISO Cost of Operations | 80901 | NYISO Cost Of Operations |
| NYISO Cost of Operations | 80902 | NYISO Cost Of Operations |
| NYISO Cost of Operations | 83501 | NYISO Cost Of Operations |
| NYISO Cost of Operations | 83502 | NYISO Cost Of Operations |
| Residuals Balancing | 81302 | Balancing Market Energy Residual |
| Residuals Balancing | 81304 | Balancing Market Loss Residual |
| Residuals Balancing | 81305 * | Balancing Market Congestion Balancing |
| Residuals Balancing | 81306 | Emergency Energy Purchases |
| Residuals Balancing | 81307 | Emergency Energy Sales |
| Residuals Balancing | 81309 | Balancing Market Energy Residual |
| Residuals Balancing | 81311 | Balancing Market Loss Residual |
| Residuals Balancing | 81312 * | Balancing Market Congestion Balancing |
| Residuals Balancing | 81313 | Emergency Energy Purchases |
| Residuals Balancing | 81314 | Emergency Energy Sales |
| Residuals DAM | 81301 | Day Ahead Market Energy Residual |
| Residuals DAM | 81303 | Day Ahead Market Loss Residual |
| Residuals DAM | 81308 | Day Ahead Market Energy Residual |
| Residuals DAM | 81310 | Day Ahead Market Loss Residual |

* Effective November 2005 codes 81305 and 81312 have been re-categorized from BPCG Balancing to Residuals Balancing so as to better reflect their uplift type. All months have been adjusted accordingly.

Billing Codes for Chart 4-C

| Chart 4-C Category Name | Billing Code | Billing Category Name |
|---|---------------------|--|
| Bid Production Cost Guarantee Balancing | 81203 | Balancing NYISO Bid Production Cost Guarantee - Internal Units |
| Bid Production Cost Guarantee Balancing | 81204 | Balancing NYISO Bid Production Cost Guarantee - External Units |
| Bid Production Cost Guarantee Balancing | 81205 | Balancing NYISO Bid Production Cost Guarantee Expenditure due to Curtailed Imports |
| Bid Production Cost Guarantee Balancing | 81208 | Balancing NYISO Bid Production Cost Guarantee - Internal Units |
| Bid Production Cost Guarantee Balancing | 81209 | Balancing NYISO Bid Production Cost Guarantee - External Units |
| Bid Production Cost Guarantee Balancing | 81213 | Balancing NYISO Bid Production Cost Guarantee Expenditure due to Curtailed Imports |
| Bid Production Cost Guarantee Balancing | 81305 | Balancing Market Congestion Balancing |
| Bid Production Cost Guarantee Balancing | 81312 | Balancing Market Congestion Balancing |
| Bid Production Cost Guarantee DAM | 81201 | DAM NYISO Bid Production Cost Guarantee - Internal Units |
| Bid Production Cost Guarantee DAM | 81202 | DAM NYISO Bid Production Cost Guarantee - External Units |
| Bid Production Cost Guarantee DAM | 81206 | DAM NYISO Bid Production Cost Guarantee - Internal Units |
| Bid Production Cost Guarantee DAM | 81207 | DAM NYISO Bid Production Cost Guarantee - External Units |
| Bid Production Cost Guarantee DAM Virtual | 81501 | DAM Virtual Bid Production Cost Guarantee |
| DAM Contract Balancing | 81315 | DAM Contract Balancing |
| DAM Contract Balancing | 81317 | DAM Contract Balancing |
| Local Reliability Balancing | 81002 | Balancing Local Reliability Bid Production Cost Guarantee |
| Local Reliability DAM | 81001 | DAM Local Reliability Bid Production Cost Guarantee |
| NYISO Cost of Operations | 80901 | NYISO Cost Of Operations |
| NYISO Cost of Operations | 80902 | NYISO Cost Of Operations |
| NYISO Cost of Operations | 83501 | NYISO Cost Of Operations |
| NYISO Cost of Operations | 83502 | NYISO Cost Of Operations |
| Residuals Balancing | 81302 | Balancing Market Energy Residual |
| Residuals Balancing | 81304 | Balancing Market Loss Residual |
| Residuals Balancing | 81306 | Emergency Energy Purchases |
| Residuals Balancing | 81307 | Emergency Energy Sales |
| Residuals Balancing | 81309 | Balancing Market Energy Residual |
| Residuals Balancing | 81311 | Balancing Market Loss Residual |
| Residuals Balancing | 81313 | Emergency Energy Purchases |
| Residuals Balancing | 81314 | Emergency Energy Sales |
| Residuals DAM | 81301 | Day Ahead Market Energy Residual |
| Residuals DAM | 81303 | Day Ahead Market Loss Residual |
| Residuals DAM | 81308 | Day Ahead Market Energy Residual |
| Residuals DAM | 81310 | Day Ahead Market Loss Residual |

* This chart reflects the billing code categories that were in effect prior to the November 2005 re-categorization and is meant for comparison purposes only.