

Operations Performance Metrics Monthly Report



October 2012 Report

Operations & Reliability Department New York Independent System Operator

Prepared by NYISO Operations Analysis and Services, based on settlements initial invoice data collected on or before November 8, 2012.

Table of Contents

- ◆ **Highlights**
 - *Operations Performance*

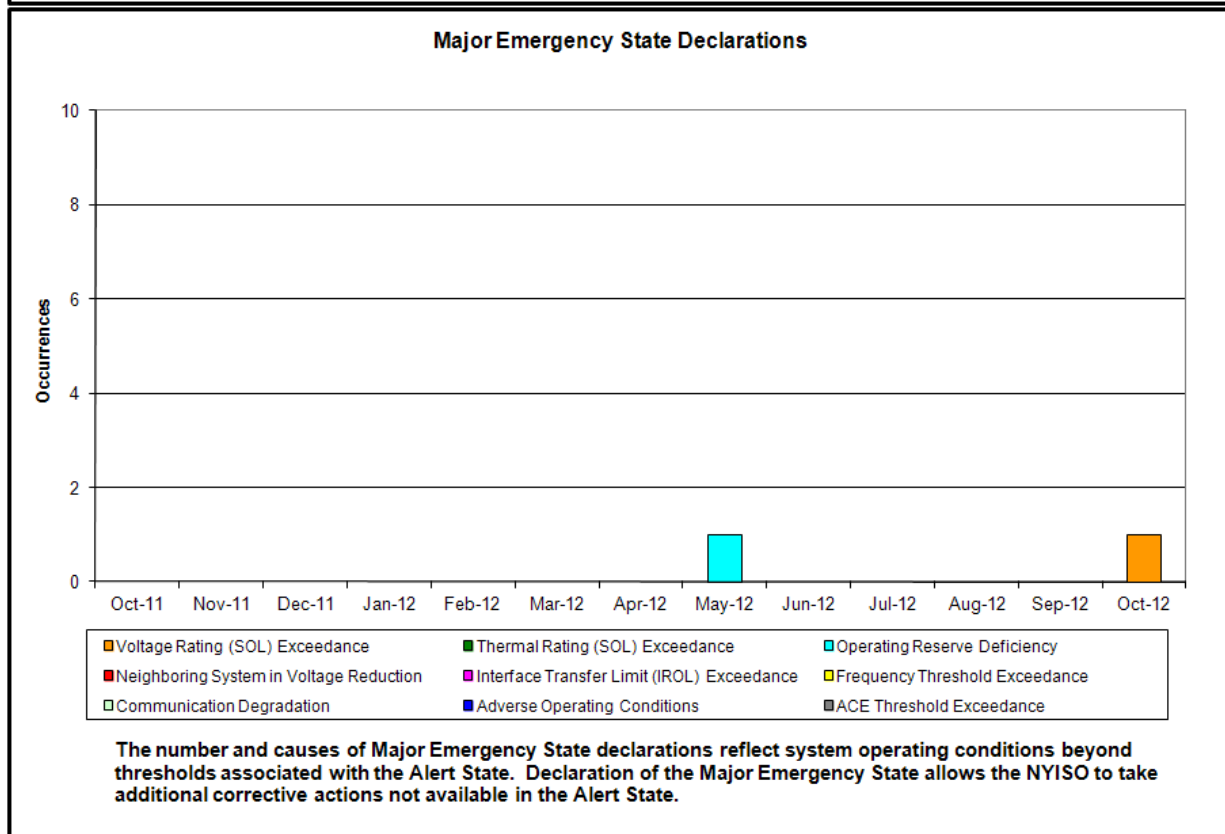
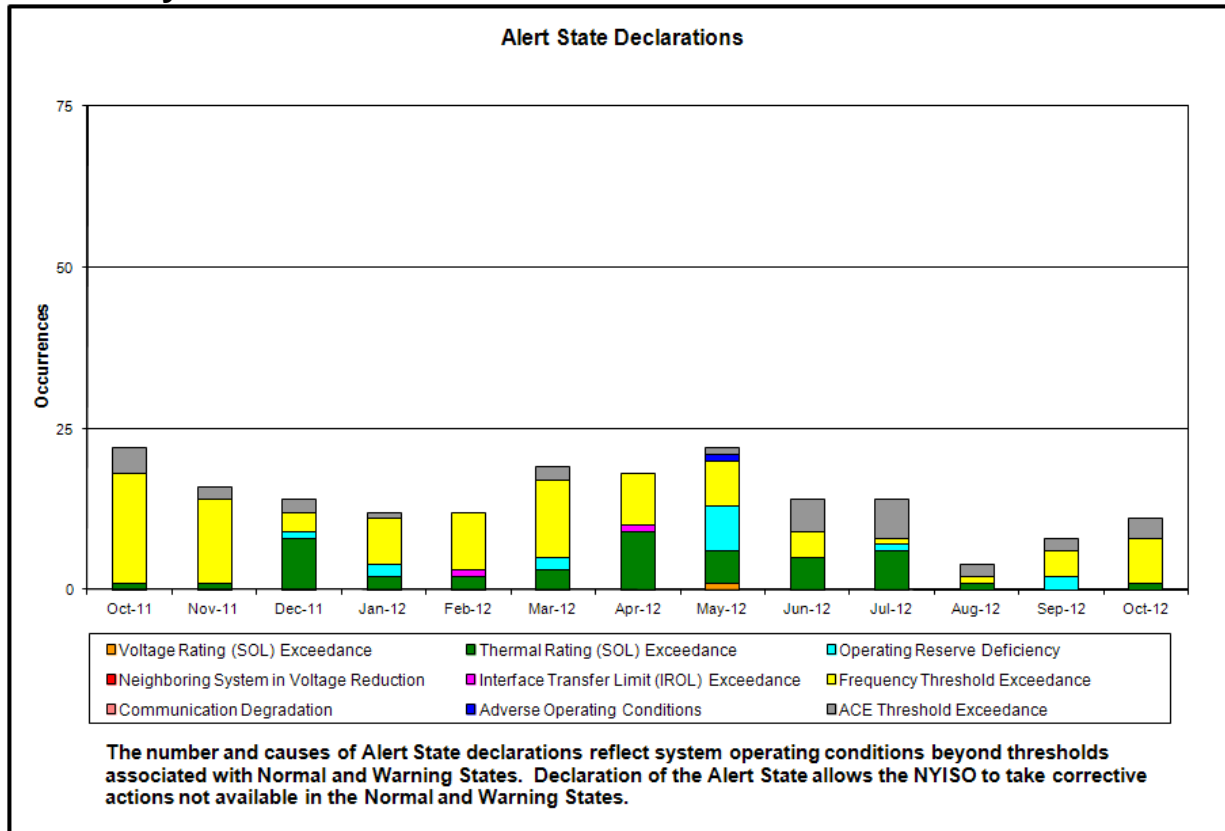
- ◆ **Reliability Performance Metrics**
 - *Alert State Declarations*
 - *Major Emergency State Declarations*
 - *IROL Exceedance Times*
 - *Balancing Area Control Performance*
 - *Reserve Activations*
 - *Disturbance Recovery Times*
 - *Load Forecasting Performance*
 - *Wind Forecasting Performance*
 - *Lake Erie Circulation and ISO Schedules*

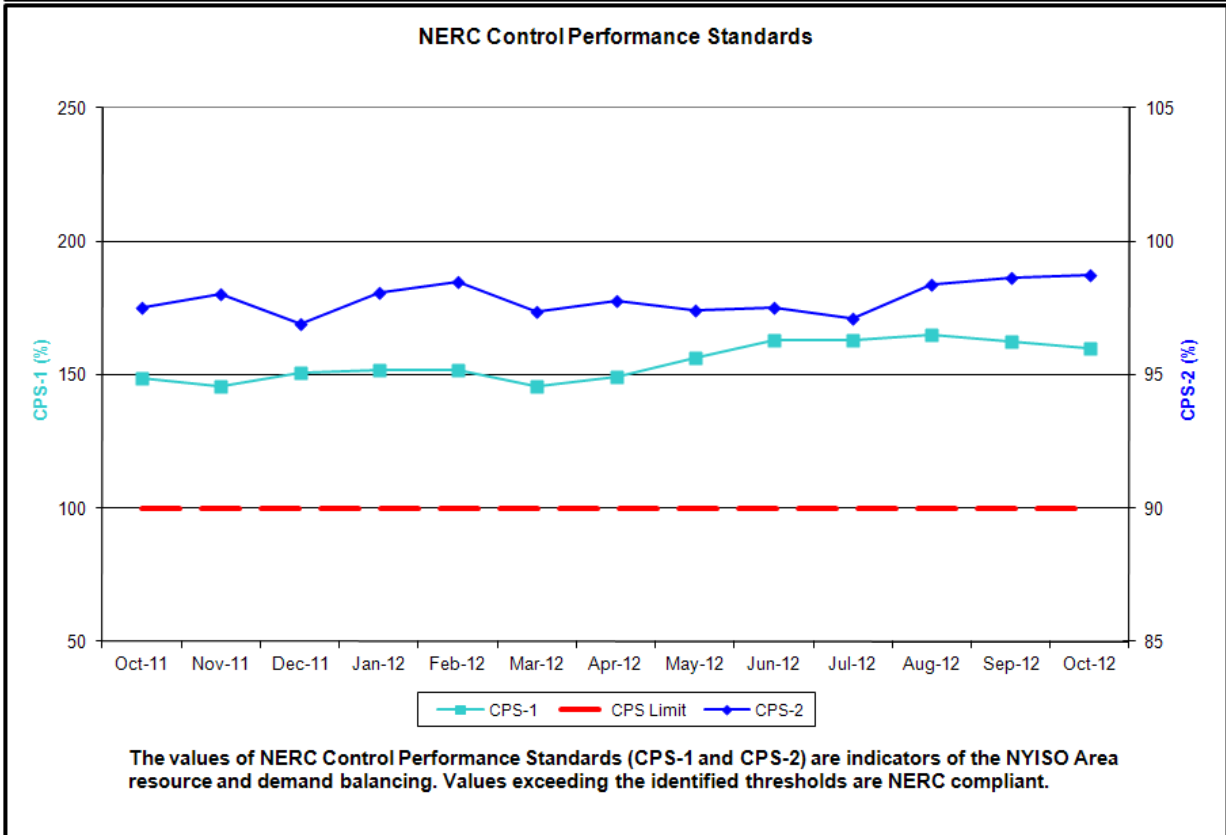
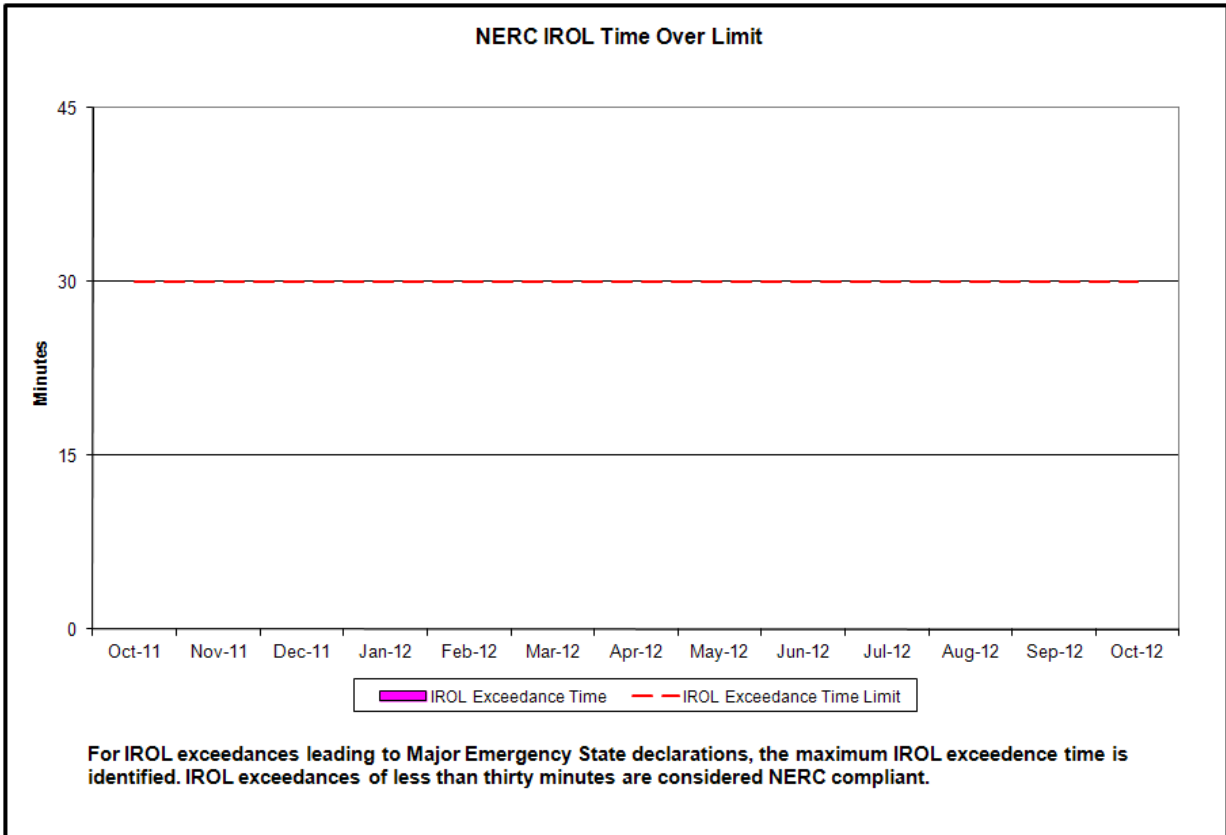
- ◆ **Market Performance Metrics**
 - *RTM Congestion Residuals Monthly Trend*
 - *RTM Congestion Residuals Daily Costs*
 - *RTM Congestion Residuals Event Summary*
 - *RTM Congestion Residuals Cost Categories*
 - *DAM Congestion Residuals Monthly Trend*
 - *DAM Congestion Residuals Daily Costs*
 - *DAM Congestion Residuals Cost Categories*
 - *NYCA Unit Uplift Components Monthly Trend*
 - *NYCA Unit Uplift Components Daily Costs*
 - *Local Reliability Costs Monthly Trend & Commitment Hours*
 - *TCC Monthly Clearing Price with DAM Congestion*
 - *ICAP Spot Market Clearing Price*
 - *UCAP Awards*

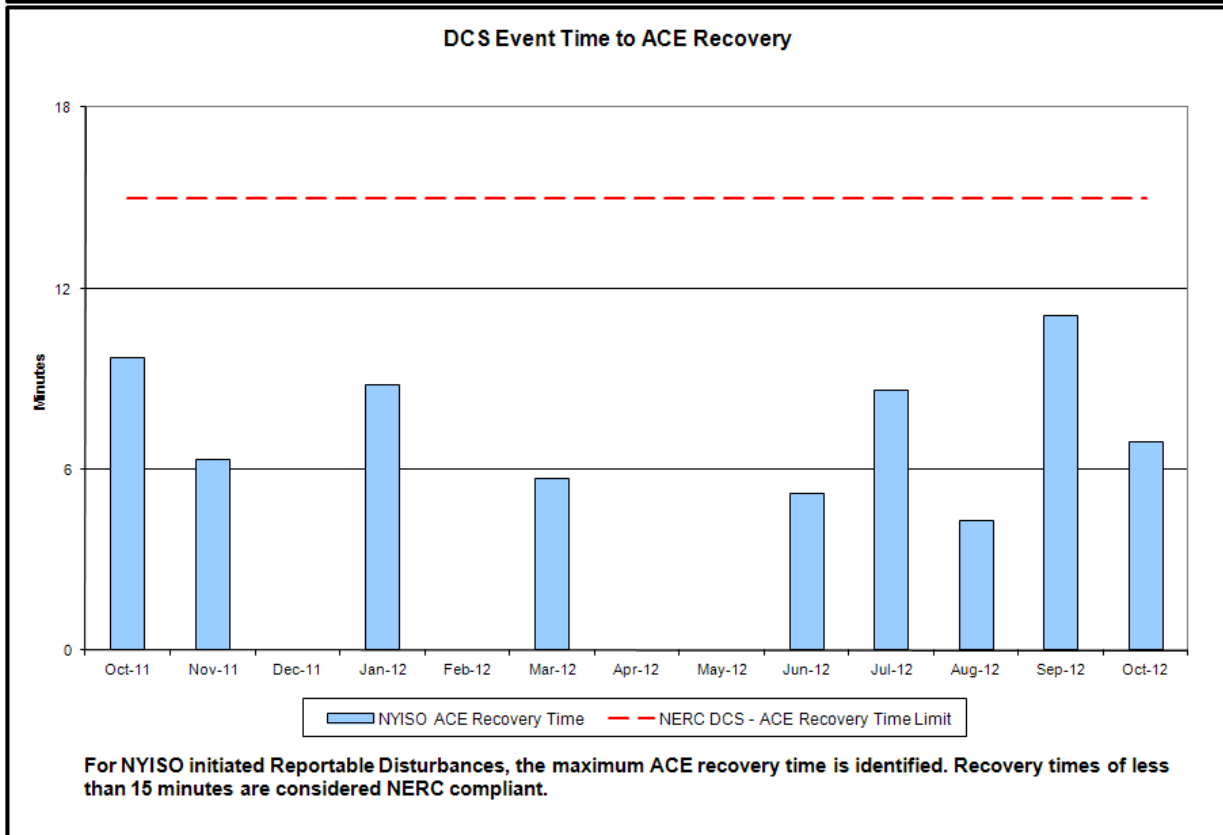
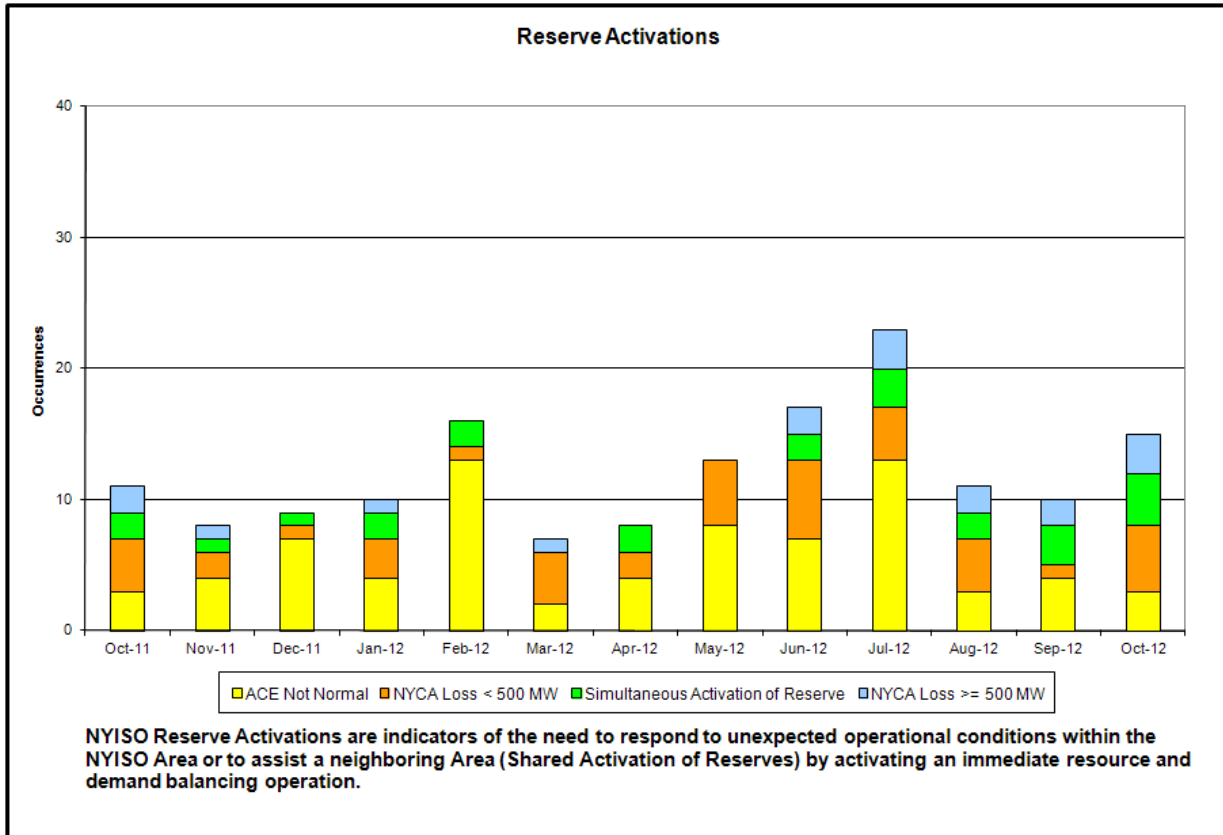
October 2012 Operations Performance Highlights

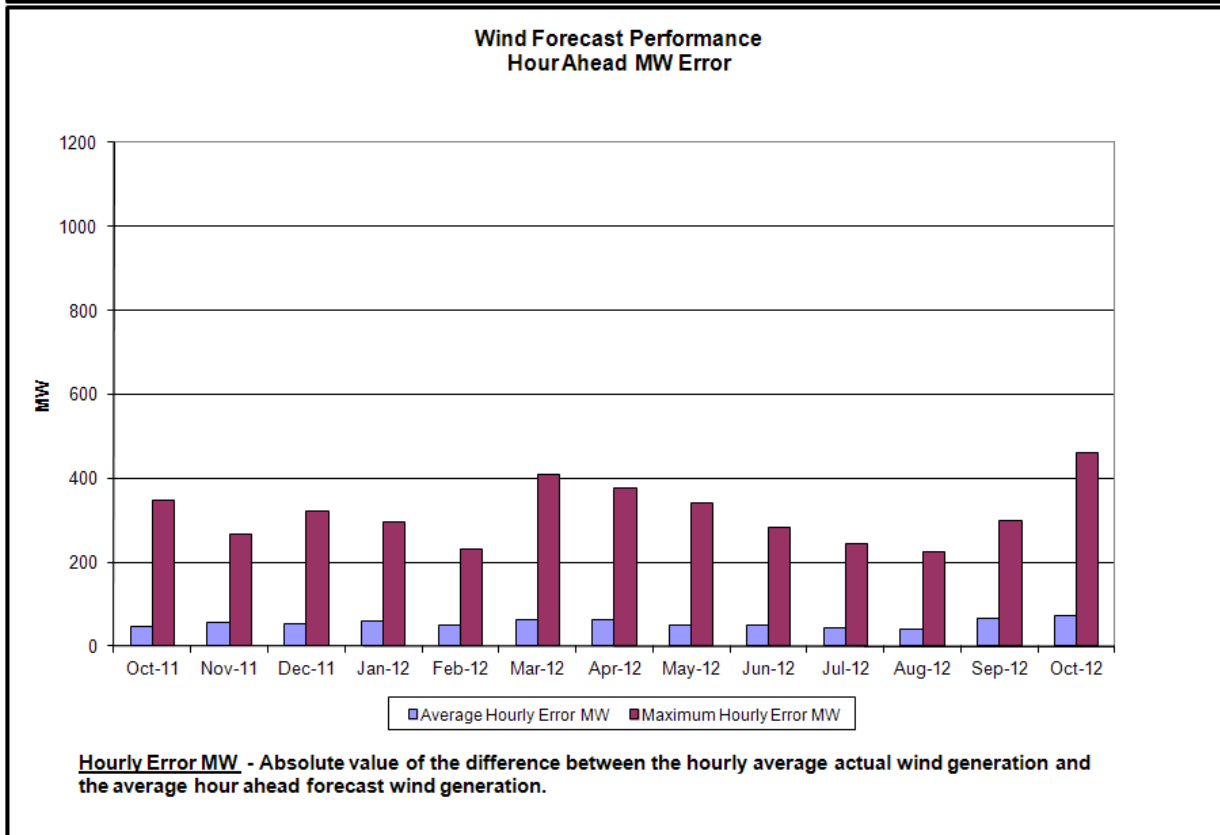
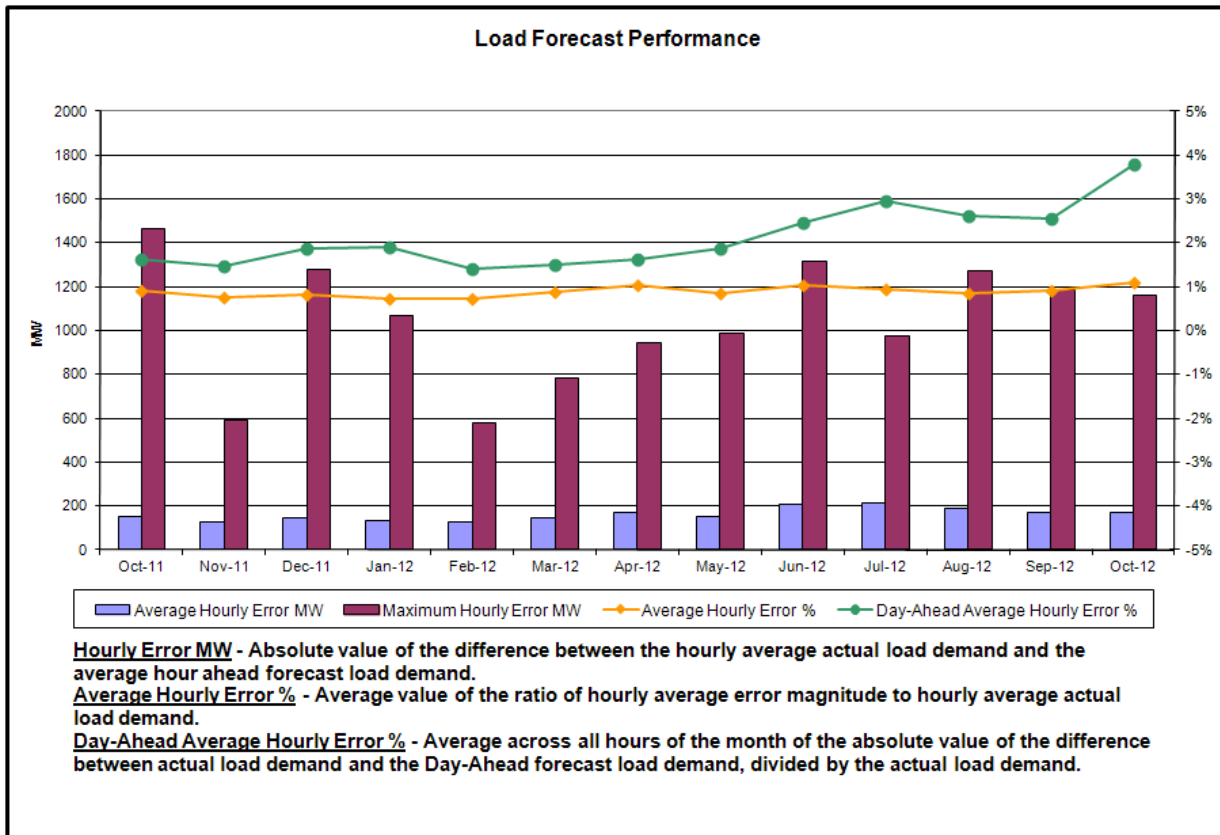
- Peak load of 21,479 MW occurred on 10/4/2012 HB 19
- All-time summer capability period peak load of 33,939 MW occurred on 8/2/2006 HB13
- 35 hours of Thunder Storm Alerts were declared
- No hours of NERC TLR level 3 curtailments
- Intra-hourly scheduling on Neptune implemented on 10/30/2012
- Significant impacts due to Hurricane Sandy beginning with 10/29/2012
 - Lowest hourly average NYCA load 9,771 MW on 10/30/2012 HB 4
- Correction applied to the Central-Capital DAM Congestion values for “TCC & Day Ahead Market” chart for trailing months

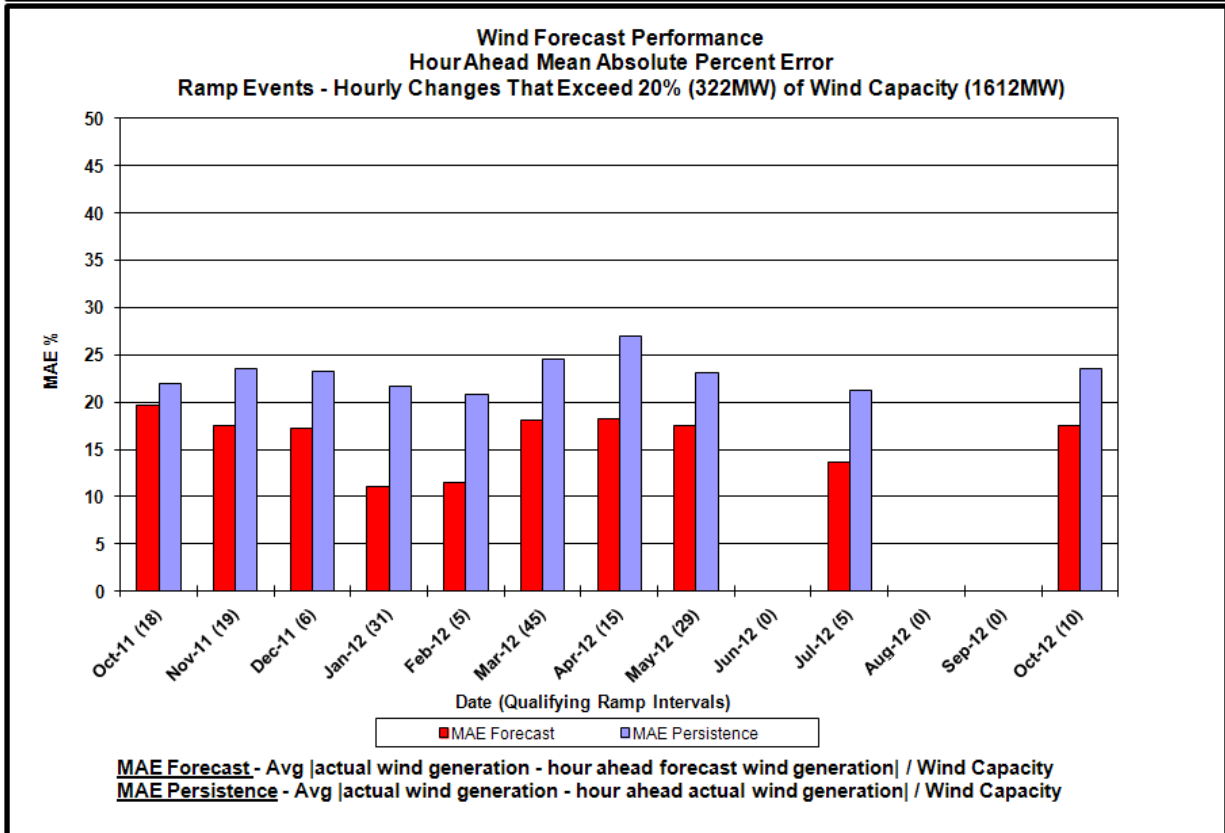
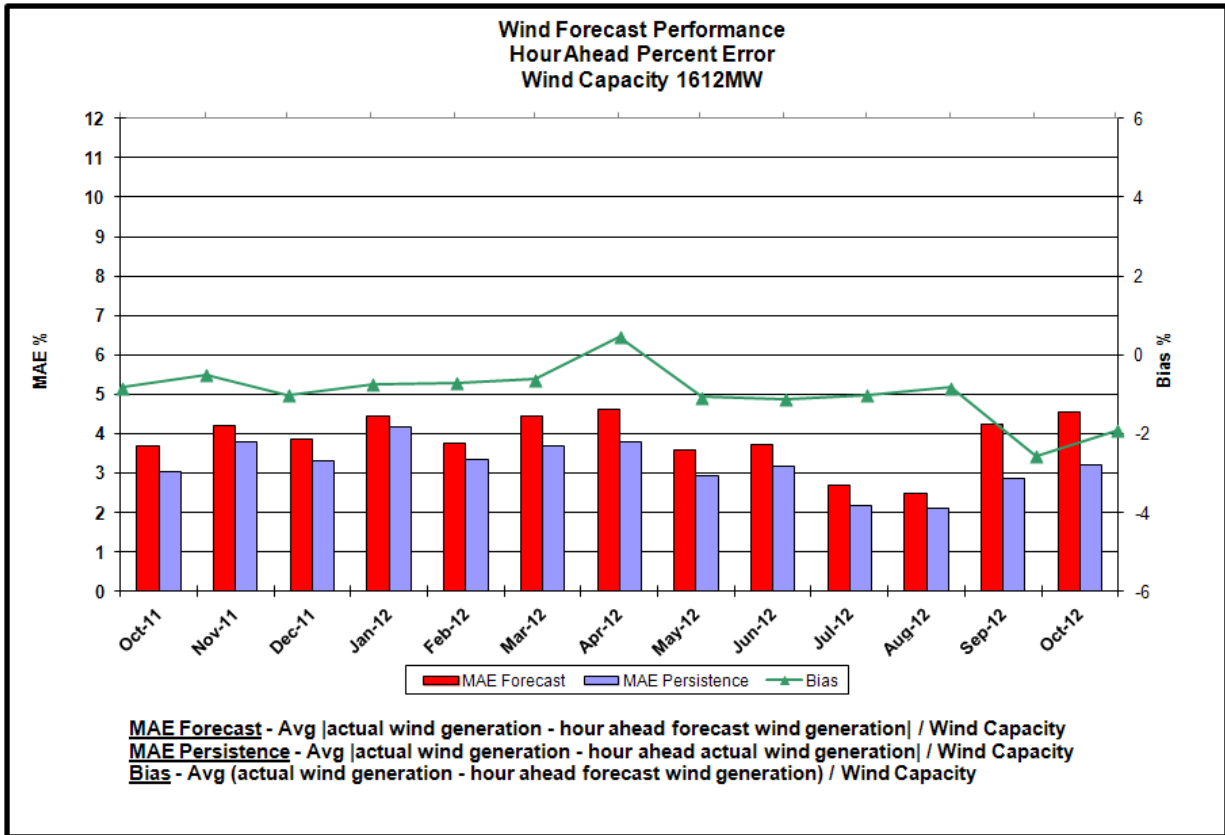
Reliability Performance Metrics

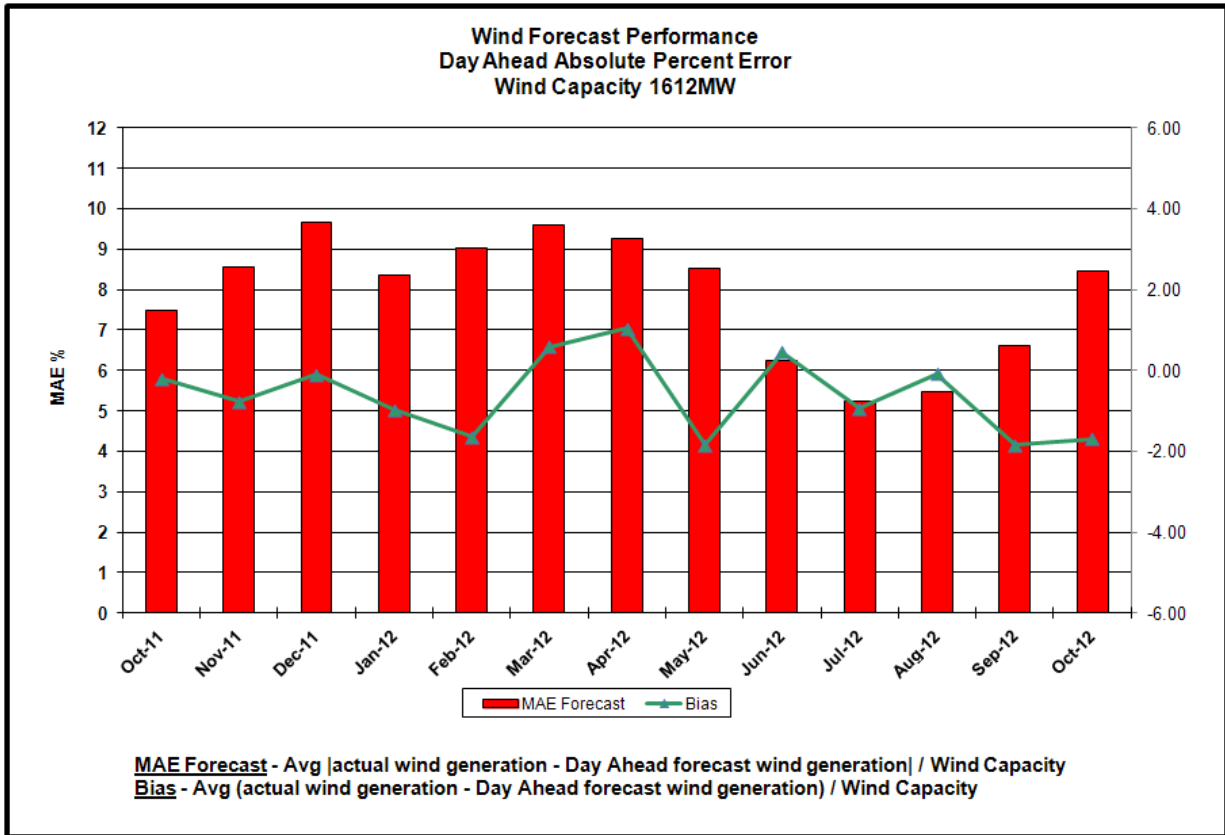


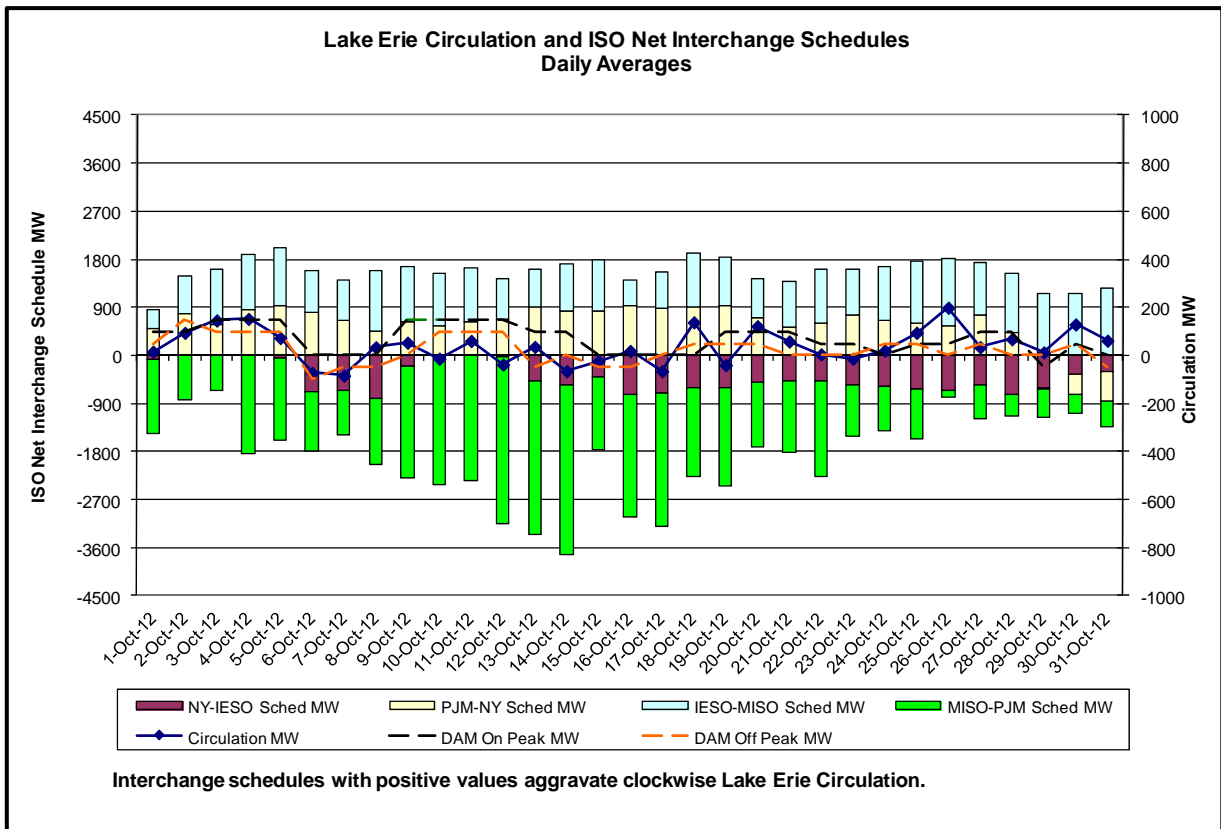
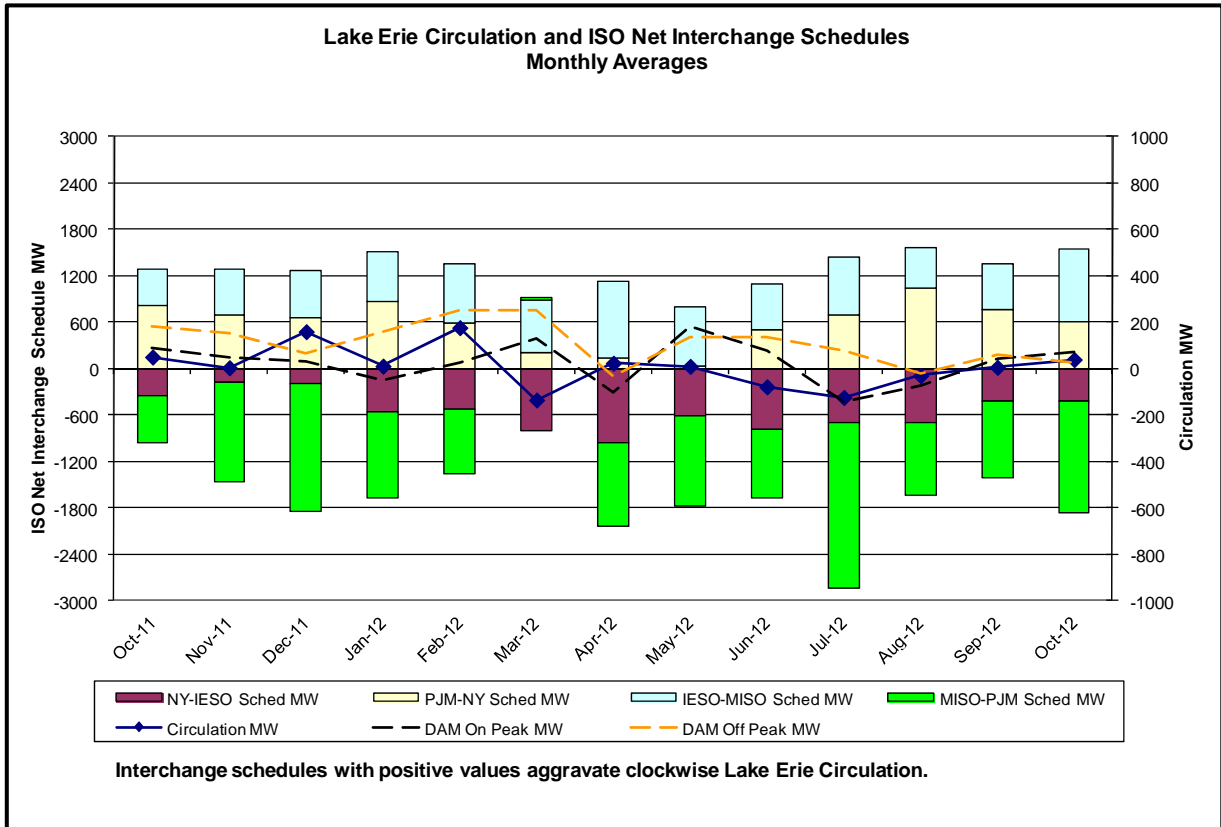




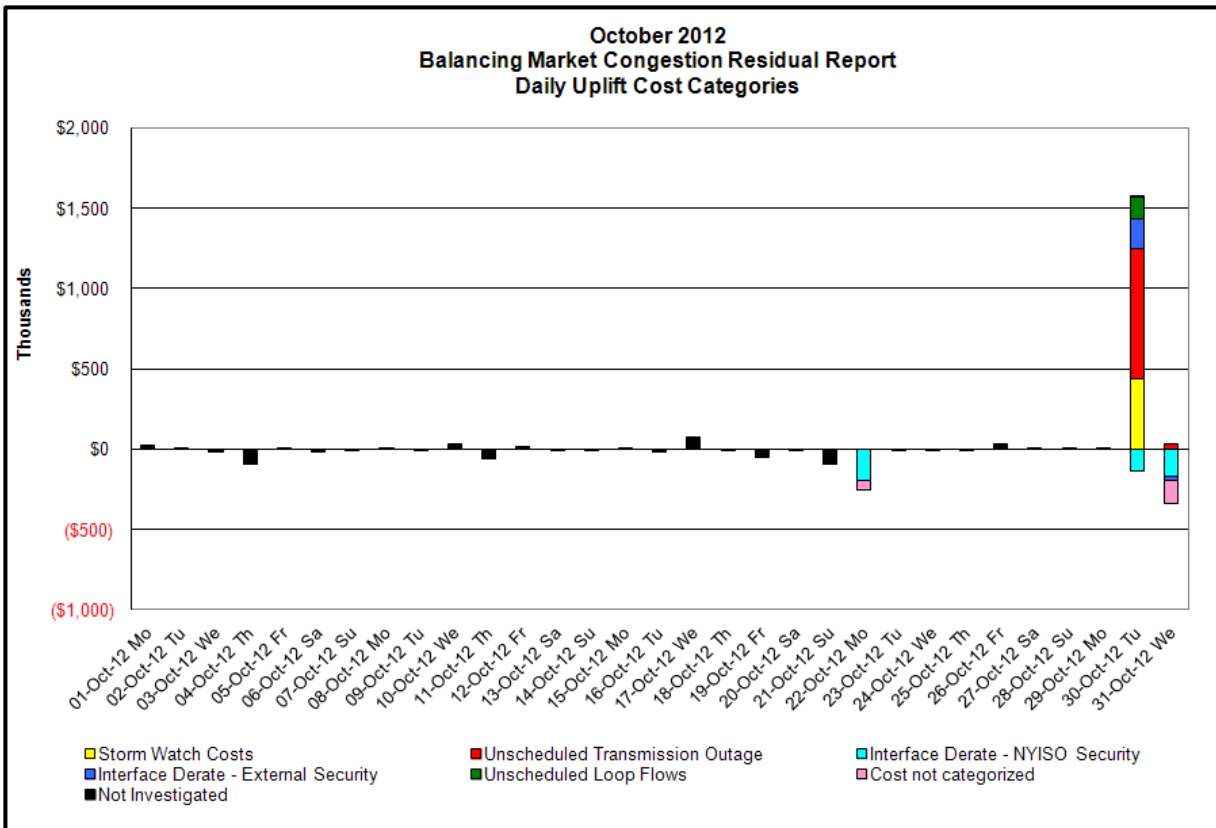
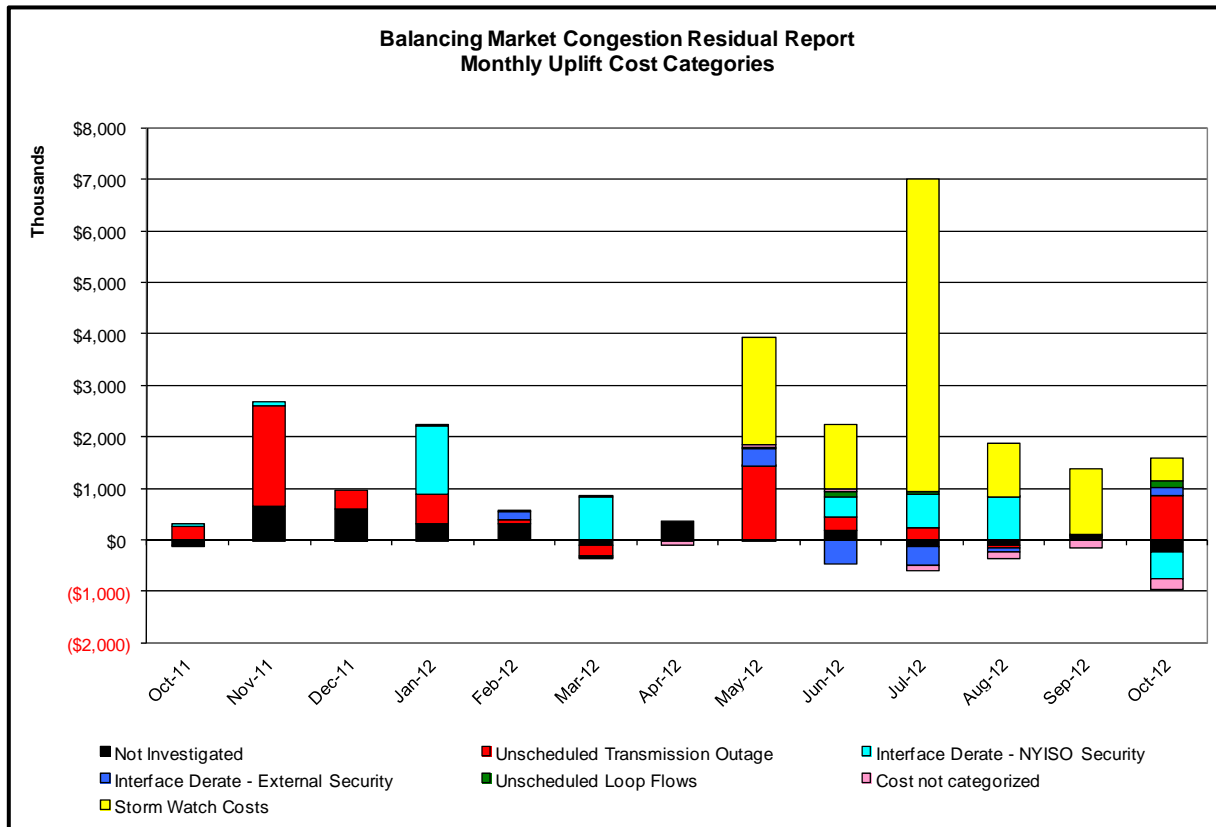








Market Performance Metrics



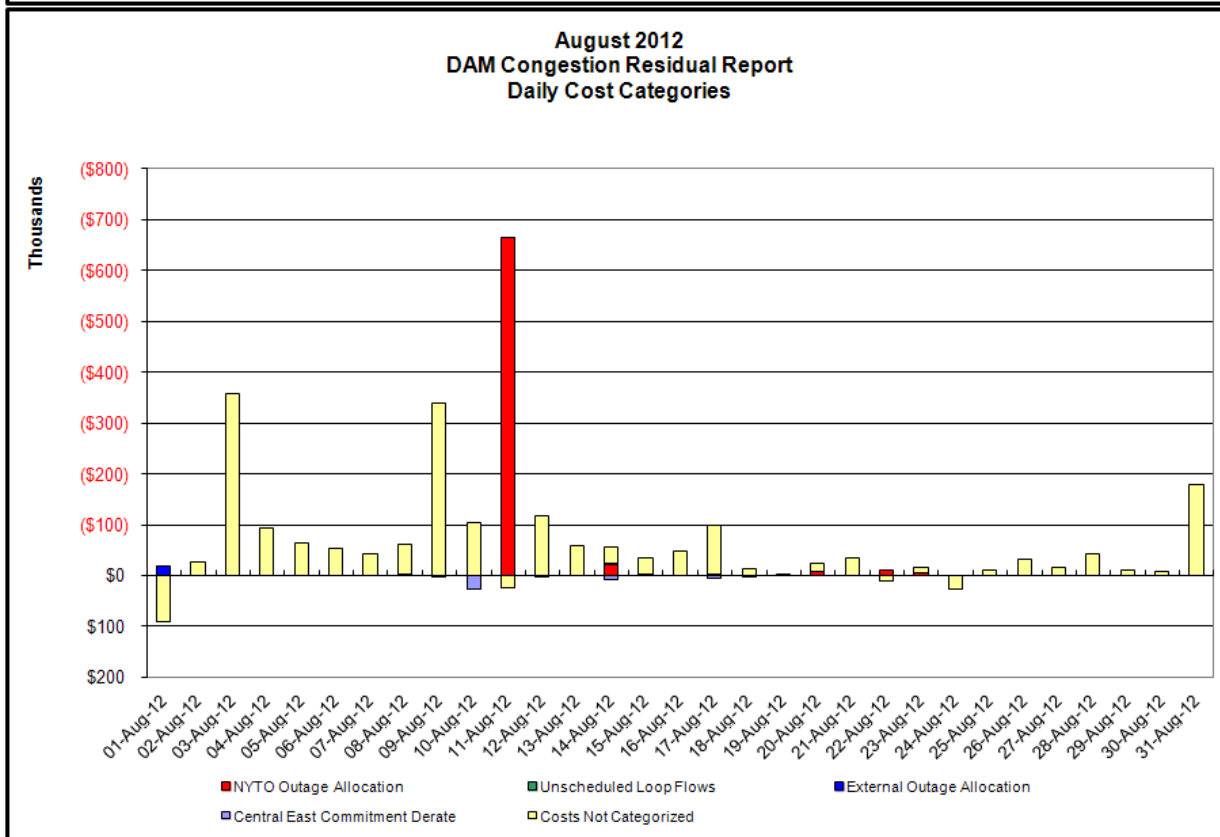
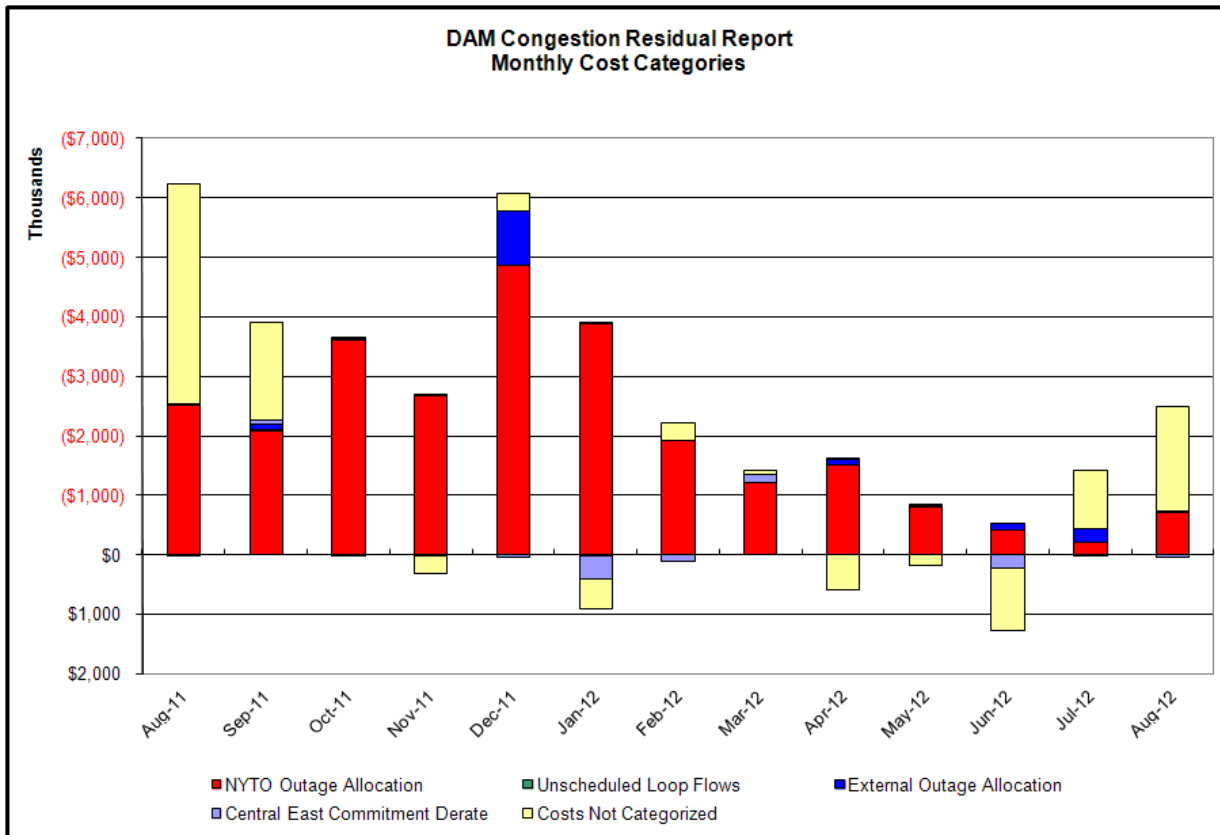
Day's Investigated in October: 22,30,31			
Event	Date (yyyymmdd)	Hours	Description
	10/22/2012	6,8-11	Uprate Hudson Avenue-Jamaica 138kV (#702)
	10/22/2012	7	NYCA DNI Ramp Limit
	10/22/2012	10-11	Uprate Astoria Annex-Astoria 138kV (#34091) SCB:JAMAICA(18)702&TB4&8901L&M
	10/22/2012	11,13	Uprate MottHaven-Dunwoodie 345kV (#72)
	10/22/2012	14	Uprate MottHaven-Dunwoodie 345kV (#72) for I/o TWR:69,J3410,70,K3411,BK258
	10/30/2012	10-12,14-18	Thunder Storm Alert
	10/30/2012	8	Forced outage Linden-Goethals 345kV (#A2253), Hudson-Farragut 345kV (#B3402, #C3403), Farragut-E.13th St 345kv(#45,46,48)
	10/30/2012	0-5,11-18,21,22,2)	Forced outage Gowanus-Goethals 345kV (#25,26), Goethals-FreshKills 345kV (#21,22),FoxHills-Willowbrook 138kV (#29212-2), FoxHills-Greenwood 138kV (29232), FreshKills-Willowbrook 138kV (29212-1), Vernon-Greenwood 138kV (#31231)
	10/30/2012	6,19,20,22,23	NYCA DNI Ramp Limit
	10/30/2012	6-8,10-12	NE_AC DNI Ramp Limit
	10/30/2012	11-14,16	Lake Erie Clockwise Circulation, DAM-RTM exceeds 125MW; Niagara-Packard 230kV (#62) & (#61)
	10/31/2012	21,23	Extended forced outage Linden-Goethals 345kV (#A2253), Hudson-Farragut 345kV (#B3402, #C3403), Farragut-E.13th St 345kv(#45,46,48)
	10/31/2012	21,23	Extended forced outage E 179th St -HellGate 138kV (#15055), Astoria E.-Astoria Annex 138kV (#34091)
	10/31/2012	7	Extended forced outage NPX CSC & NPX 1385
	10/31/2012	4,6,11,16,20	NYCA DNI Ramp Limit
	10/31/2012	9	PJM DNI Ramp Limit

Real-Time Balancing Market Congestion Residual (Uplift Cost) Categories

<u>Category</u>	<u>Cost Assignment</u>	<u>Events Types</u>	<u>Event Examples</u>
Storm Watch	Zone J	Thunderstorm Alert (TSA)	TSA Activations
Unscheduled Transmission Outage	Market-wide	Reduction in DAM to RTM transfers related to unscheduled transmission outage	Forced Line Outage, Unit AVR Outages
Interface Derate - NYISO Security	Market-wide	Reduction in DAM to RTM transfers not related to transmission outage	Interface Derates due to RTM voltages
Interface Derate - External Security	Market-wide	Reduction in DAM to RTM transfers related to External Control Area Security Events	TLR Events, External Transaction Curtailments
Unscheduled Loop Flows	Market-wide	Changes in DAM to RTM unscheduled loop flows impacting NYISO Interface transmission constraints	DAM to RTM Clockwise Lake Erie Loop Flows greater than 125 MW

Monthly Balancing Market Congestion Report Assumptions/Notes

- 1) Storm Watch Costs are identified as daily total uplift costs
- 2) At a minimum those days with \$ 100 K/HR, shortfall of \$200 K/Day or more, or surplus of \$ 100 K/Day or more are investigated
- 3) Uplift costs associated with multiple event types are apportioned equally by hour
- 4) Investigations began with Dec 2008. Prior months are reported as Not Investigated.



Day-Ahead Market Congestion Residual Categories

<u>Category</u>	<u>Cost Assignment</u>	<u>Events Types</u>	<u>Event Examples</u>
NYTO Outage Allocation	Responsible TO	Direct allocation to NYTO's responsible for transmission equipment status change.	DAM scheduled outage for equipment modeled in-service for the TCC Auction.
Unscheduled Loop Flows	All TO by Monthly Allocation Factor	Residual impact of Lake Erie circulation, MW difference between the DAM and TCC Auction.	Lake Erie Loop Flow Assumptions
External Outage Allocation	All TO by Monthly Allocation Factor	Direct allocation to transmission equipment status change caused by change in status of external equipment.	Tie line required out-of-service by TO of neighboring control area.
Central East Commitment Derate	All TO by Monthly Allocation Factor	Reductions in the DAM Central East_VC limit as compared to the TCC Auction limit, which are not associated with transmission line outages.	

