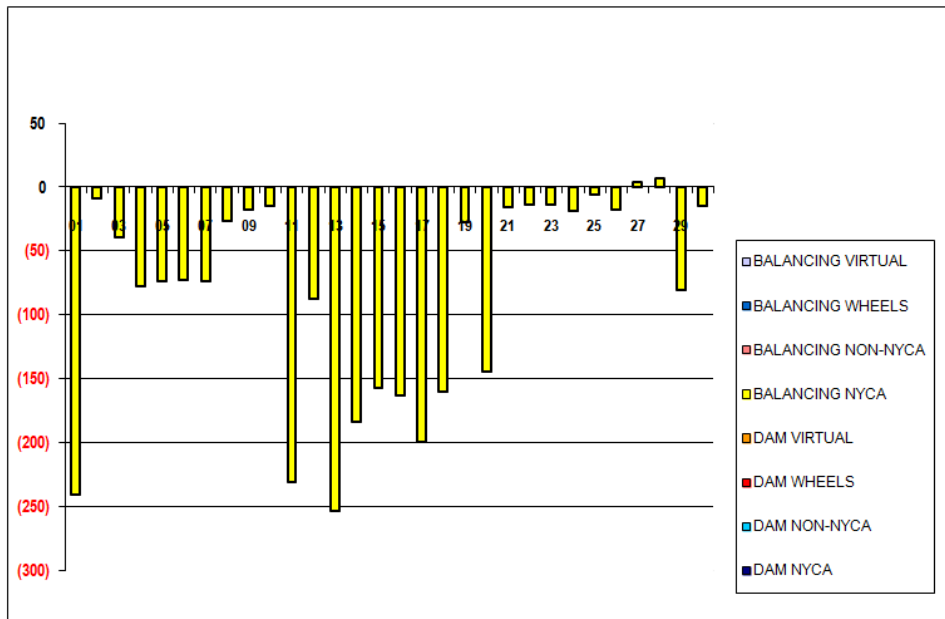


SETTLEMENTS REPORT
 September 2017 Settlement Adjustment
 February 7, 2018

Settlement Adjustment – Market Supply Delta Analysis

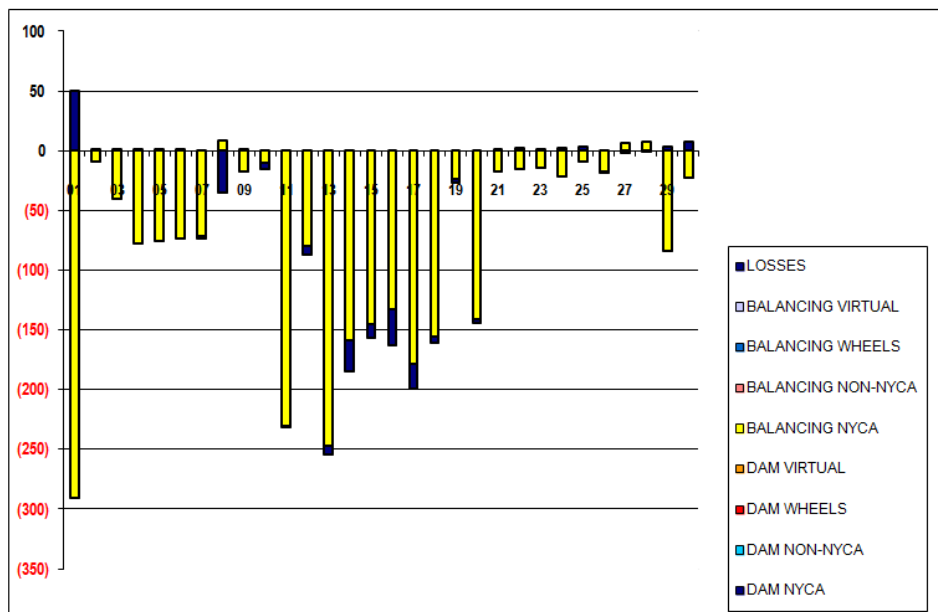
	MONDAY	TUESDAY	WEDNESDAY	THURSDAY	FRIDAY	SATURDAY	SUNDAY
					1	2	3
DAM NYCA					0	0	0
DAM NON-NYCA					0	0	0
DAM WHEELS					0	0	0
DAM VIRTUAL					0	0	0
BALANCING NYCA					(241)	(9)	(40)
BALANCING NON-NYCA					0	0	0
BALANCING WHEELS					0	0	0
BALANCING VIRTUAL					0	0	0
	4	5	6	7	8	9	10
DAM NYCA	0	0	0	0	0	0	0
DAM NON-NYCA	0	0	0	0	0	0	0
DAM WHEELS	0	0	0	0	0	0	0
DAM VIRTUAL	0	0	0	0	0	0	0
BALANCING NYCA	(79)	(74)	(73)	(74)	(27)	(17)	(15)
BALANCING NON-NYCA	0	0	0	0	0	0	0
BALANCING WHEELS	0	0	0	0	0	0	0
BALANCING VIRTUAL	0	0	0	0	0	0	0
	11	12	13	14	15	16	17
DAM NYCA	0	0	0	0	0	0	0
DAM NON-NYCA	0	0	0	0	0	0	0
DAM WHEELS	0	0	0	0	0	0	0
DAM VIRTUAL	0	0	0	0	0	0	0
BALANCING NYCA	(231)	(87)	(254)	(184)	(157)	(163)	(199)
BALANCING NON-NYCA	0	0	0	0	0	0	0
BALANCING WHEELS	0	0	0	0	0	0	0
BALANCING VIRTUAL	0	0	0	0	0	0	0
	18	19	20	21	22	23	24
DAM NYCA	0	0	0	0	0	0	0
DAM NON-NYCA	0	0	0	0	0	0	0
DAM WHEELS	0	0	0	0	0	0	0
DAM VIRTUAL	0	0	0	0	0	0	0
BALANCING NYCA	(161)	(27)	(144)	(16)	(14)	(14)	(19)
BALANCING NON-NYCA	0	0	0	0	0	0	0
BALANCING WHEELS	0	0	0	0	0	0	0
BALANCING VIRTUAL	0	0	0	0	0	0	0
	25	26	27	28	29	30	
DAM NYCA	0	0	0	0	0	0	
DAM NON-NYCA	0	0	0	0	0	0	
DAM WHEELS	0	0	0	0	0	0	
DAM VIRTUAL	0	0	0	0	0	0	
BALANCING NYCA	(6)	(18)	4	7	(81)	(15)	
BALANCING NON-NYCA	0	0	0	0	0	0	
BALANCING WHEELS	0	0	0	0	0	0	
BALANCING VIRTUAL	0	0	0	0	0	0	



SETTLEMENTS REPORT
 September 2017 Settlement Adjustment
 February 7, 2018

Settlement Adjustment – Market Withdrawals Delta Analysis

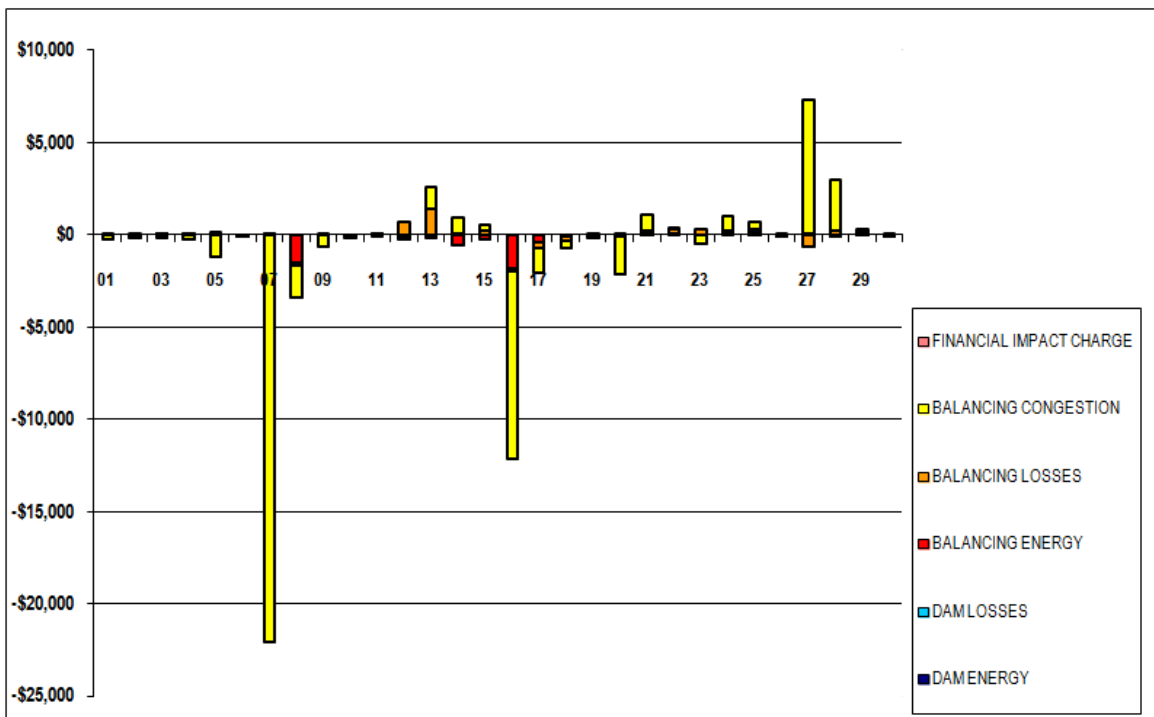
	MONDAY	TUESDAY	WEDNESDAY	THURSDAY	FRIDAY	SATURDAY	SUNDAY
					1	2	3
DAM NYCA					0	0	0
DAM NON-NYCA					0	0	0
DAM WHEELS					0	0	0
DAM VIRTUAL					0	0	0
BALANCING NYCA					(291)	(9)	(40)
BALANCING NON-NYCA					0	0	0
BALANCING WHEELS					0	0	0
BALANCING VIRTUAL					0	0	0
UFE/LOSSES					50	0	0
	4	5	6	7	8	9	10
DAM NYCA	0	0	0	0	0	0	0
DAM NON-NYCA	0	0	0	0	0	0	0
DAM WHEELS	0	0	0	0	0	0	0
DAM VIRTUAL	0	0	0	0	0	0	0
BALANCING NYCA	(78)	(76)	(73)	(72)	9	(17)	(11)
BALANCING NON-NYCA	0	0	0	0	0	0	0
BALANCING WHEELS	0	0	0	0	0	0	0
BALANCING VIRTUAL	0	0	0	0	0	0	0
UFE/LOSSES	0	2	0	(2)	(35)	0	(5)
	11	12	13	14	15	16	17
DAM NYCA	0	0	0	0	0	0	0
DAM NON-NYCA	0	0	0	0	0	0	0
DAM WHEELS	0	0	0	0	0	0	0
DAM VIRTUAL	0	0	0	0	0	0	0
BALANCING NYCA	(230)	(79)	(247)	(159)	(145)	(133)	(179)
BALANCING NON-NYCA	0	0	0	0	0	0	0
BALANCING WHEELS	0	0	0	0	0	0	0
BALANCING VIRTUAL	0	0	0	0	0	0	0
UFE/LOSSES	(0)	(8)	(7)	(26)	(12)	(30)	(21)
	18	19	20	21	22	23	24
DAM NYCA	0	0	0	0	0	0	0
DAM NON-NYCA	0	0	0	0	0	0	0
DAM WHEELS	0	0	0	0	0	0	0
DAM VIRTUAL	0	0	0	0	0	0	0
BALANCING NYCA	(155)	(24)	(141)	(17)	(16)	(14)	(22)
BALANCING NON-NYCA	0	0	0	0	0	0	0
BALANCING WHEELS	0	0	0	0	0	0	0
BALANCING VIRTUAL	0	0	0	0	0	0	0
UFE/LOSSES	(5)	(4)	(3)	1	2	0	3
	25	26	27	28	29	30	
DAM NYCA	0	0	0	0	0	0	
DAM NON-NYCA	0	0	0	0	0	0	
DAM WHEELS	0	0	0	0	0	0	
DAM VIRTUAL	0	0	0	0	0	0	
BALANCING NYCA	(10)	(17)	6	7	(84)	(23)	
BALANCING NON-NYCA	0	0	0	0	0	0	
BALANCING WHEELS	0	0	0	0	0	0	
BALANCING VIRTUAL	0	0	0	0	0	0	
UFE/LOSSES	4	(1)	(2)	(0)	3	7	



SETTLEMENTS REPORT
September 2017 Settlement Adjustment
February 7, 2018

Settlement Adjustment – Market Residuals Delta Analysis

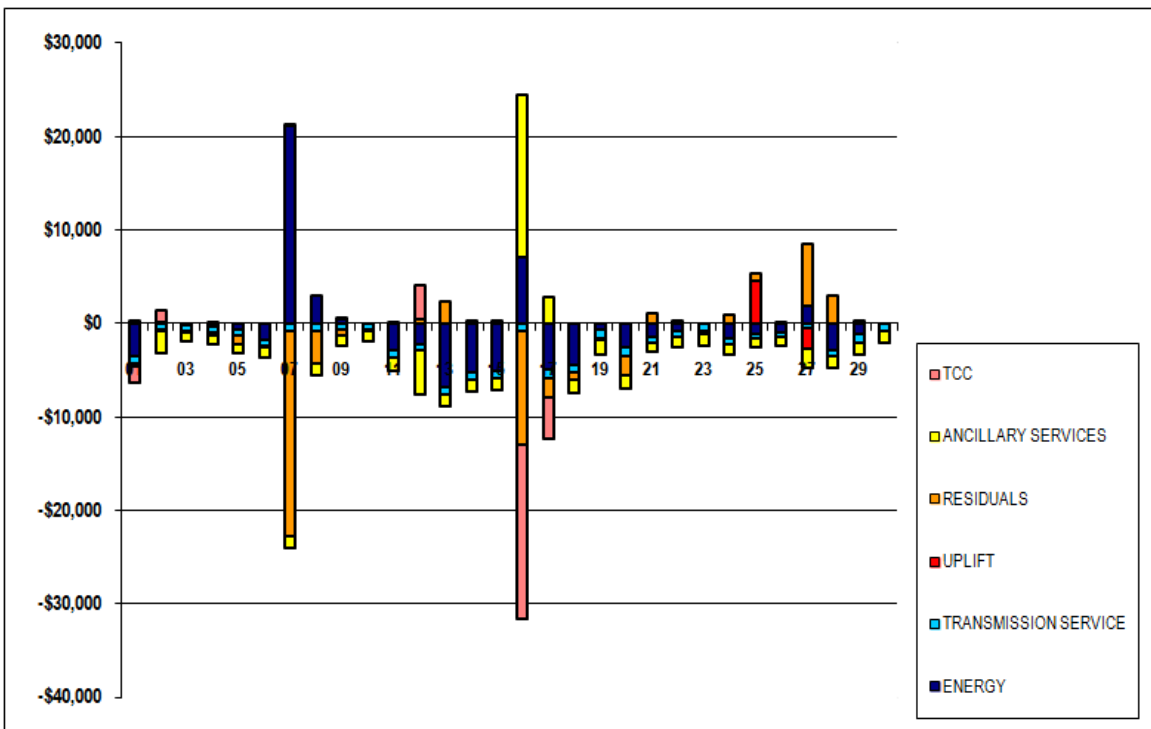
	MONDAY	TUESDAY	WEDNESDAY	THURSDAY	FRIDAY	SATURDAY	SUNDAY
					1	2	3
DAM ENERGY					\$0.00	\$0.00	\$0.01
DAM LOSSES					\$0.00	\$0.00	\$0.01
BALANCING ENERGY					\$0.50	\$5.99	\$3.11
BALANCING LOSSES					(\$19.86)	(\$23.36)	\$10.42
BALANCING CONGESTION					(\$249.03)	(\$127.07)	(\$168.43)
FINANCIAL IMPACT CHARGE					\$0.00	\$0.00	\$0.00
	4	5	6	7	8	9	10
DAM ENERGY	\$0.00	\$0.00	\$0.00	\$0.01	(\$0.01)	\$0.00	(\$0.01)
DAM LOSSES	\$0.01	\$0.00	\$0.00	\$0.00	\$0.00	\$0.01	\$0.00
BALANCING ENERGY	(\$2.72)	\$27.79	(\$2.83)	(\$4.32)	(\$1,480.69)	(\$0.98)	(\$110.12)
BALANCING LOSSES	\$34.60	\$153.29	(\$33.87)	\$29.83	(\$165.67)	(\$48.89)	(\$36.94)
BALANCING CONGESTION	(\$274.24)	(\$1,166.31)	(\$34.42)	(\$22,045.50)	(\$1,777.76)	(\$590.61)	\$0.00
FINANCIAL IMPACT CHARGE	\$0.00	\$0.00	\$0.00	\$0.00	\$0.00	\$0.00	\$0.00
	11	12	13	14	15	16	17
DAM ENERGY	\$0.01	\$0.00	\$0.00	\$0.00	\$0.00	\$0.00	(\$0.01)
DAM LOSSES	\$0.00	\$0.00	(\$0.01)	\$0.00	\$0.00	\$0.00	\$0.00
BALANCING ENERGY	\$1.05	(\$183.95)	(\$199.36)	(\$554.63)	(\$281.93)	(\$1,815.85)	(\$419.20)
BALANCING LOSSES	\$40.46	\$680.13	\$1,411.24	\$96.70	\$186.80	(\$202.12)	(\$332.93)
BALANCING CONGESTION	(\$28.30)	(\$77.04)	\$1,147.93	\$809.62	\$325.05	(\$10,115.47)	(\$1,344.27)
FINANCIAL IMPACT CHARGE	\$0.00	\$0.00	\$0.00	\$0.00	\$0.00	\$0.00	\$0.00
	18	19	20	21	22	23	24
DAM ENERGY	\$0.00	\$0.00	\$0.00	\$0.01	\$0.00	\$0.00	\$0.00
DAM LOSSES	(\$0.01)	\$0.00	\$0.00	\$0.00	\$0.00	\$0.00	\$0.00
BALANCING ENERGY	(\$121.01)	(\$90.95)	(\$80.98)	\$34.61	\$58.97	\$3.61	\$66.49
BALANCING LOSSES	(\$185.65)	\$18.15	\$36.53	\$181.78	\$266.40	\$267.33	\$129.01
BALANCING CONGESTION	(\$376.53)	(\$72.57)	(\$2,038.52)	\$848.96	\$26.19	(\$518.45)	\$784.72
FINANCIAL IMPACT CHARGE	\$0.00	\$0.00	\$0.00	\$0.00	\$0.00	\$0.00	\$0.00
	25	26	27	28	29	30	
DAM ENERGY	\$0.00	(\$0.01)	\$0.00	\$0.00	\$0.01	\$0.00	
DAM LOSSES	\$0.01	(\$0.01)	\$0.00	\$0.01	\$0.00	\$0.00	
BALANCING ENERGY	\$177.64	(\$30.62)	\$37.22	(\$7.62)	\$87.08	\$29.49	
BALANCING LOSSES	\$114.10	\$52.04	(\$607.20)	\$242.14	\$132.13	(\$36.48)	
BALANCING CONGESTION	\$401.59	(\$16.75)	\$7,263.52	\$2,711.43	\$17.97	(\$54.86)	
FINANCIAL IMPACT CHARGE	\$0.00	\$0.00	\$0.00	(\$0.04)	\$0.00	\$0.00	



SETTLEMENTS REPORT
September 2017 Settlement Adjustment
February 7, 2018

Settlement Adjustment – Market Costs Delta Analysis

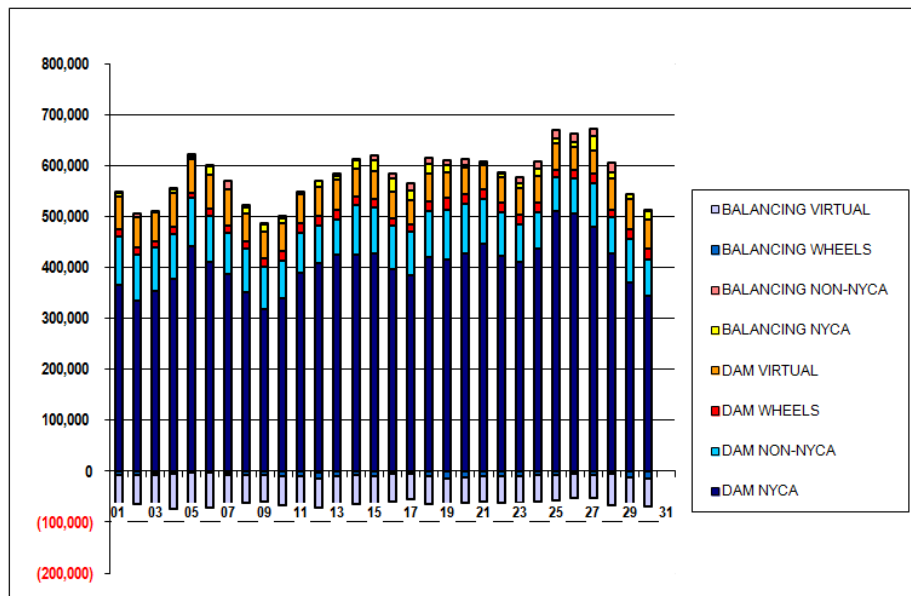
	MONDAY	TUESDAY	WEDNESDAY	THURSDAY	FRIDAY	SATURDAY	SUNDAY
					1	2	3
ENERGY					(\$3,482.78)	\$69.96	(\$237.45)
TRANSMISSION SERVICE					(\$827.47)	(\$651.76)	(\$575.59)
UPLIFT					(\$0.33)	\$0.01	\$0.01
RESIDUALS					(\$268.39)	(\$144.44)	(\$154.88)
ANCILLARY SERVICES					\$284.61	(\$2,351.11)	(\$952.63)
TCC					(\$1,736.08)	\$1,281.98	\$0.00
	4	5	6	7	8	9	10
ENERGY	(\$395.14)	(\$655.98)	(\$1,696.29)	\$21,229.71	\$3,055.36	\$459.33	(\$35.37)
TRANSMISSION SERVICE	(\$602.15)	(\$578.15)	(\$730.42)	(\$749.21)	(\$810.98)	(\$665.52)	(\$667.49)
UPLIFT	\$0.05	(\$0.01)	(\$0.02)	\$0.01	(\$0.01)	\$0.02	\$0.01
RESIDUALS	(\$242.35)	(\$985.23)	(\$71.12)	(\$22,019.98)	(\$3,424.13)	(\$640.47)	(\$147.07)
ANCILLARY SERVICES	(\$1,005.90)	(\$966.20)	(\$1,214.76)	(\$1,245.12)	(\$1,325.16)	(\$1,093.92)	(\$1,095.33)
TCC	\$0.00	\$0.00	\$0.00	\$0.00	\$0.00	\$0.00	\$0.00
	11	12	13	14	15	16	17
ENERGY	(\$2,891.57)	(\$2,183.07)	(\$6,877.49)	(\$5,282.44)	(\$5,125.96)	\$7,137.44	(\$4,969.38)
TRANSMISSION SERVICE	(\$791.29)	(\$642.13)	(\$745.90)	(\$732.67)	(\$747.55)	(\$787.35)	(\$880.12)
UPLIFT	\$0.01	\$0.47	\$0.01	\$0.01	\$0.01	\$0.00	\$0.00
RESIDUALS	\$13.22	\$419.14	\$2,359.80	\$351.69	\$229.92	(\$12,133.44)	(\$2,096.41)
ANCILLARY SERVICES	(\$1,355.62)	(\$4,812.62)	(\$1,285.68)	(\$1,240.78)	(\$1,261.64)	\$17,301.94	\$2,849.37
TCC	\$0.00	\$3,740.74	\$0.00	\$0.00	\$0.00	(\$18,625.54)	(\$4,336.77)
	18	19	20	21	22	23	24
ENERGY	(\$4,383.79)	(\$683.98)	(\$2,585.64)	(\$1,458.40)	(\$740.38)	(\$82.46)	(\$1,581.91)
TRANSMISSION SERVICE	(\$903.74)	(\$963.59)	(\$838.60)	(\$604.41)	(\$689.33)	(\$763.85)	(\$668.65)
UPLIFT	\$0.00	\$0.01	\$0.00	\$0.04	\$0.00	(\$0.03)	\$0.01
RESIDUALS	(\$683.20)	(\$145.37)	(\$2,082.97)	\$1,065.36	\$351.56	(\$247.51)	\$980.22
ANCILLARY SERVICES	(\$1,519.97)	(\$1,583.39)	(\$1,409.65)	(\$993.79)	(\$1,132.42)	(\$1,253.94)	(\$1,100.20)
TCC	\$0.00	\$0.00	\$0.00	\$0.00	\$0.00	\$0.00	\$0.00
	25	26	27	28	29	30	
ENERGY	(\$1,073.52)	(\$897.34)	\$1,883.45	(\$2,838.99)	(\$1,206.90)	(\$52.75)	
TRANSMISSION SERVICE	(\$547.45)	(\$559.89)	(\$470.80)	(\$704.16)	(\$824.46)	(\$748.92)	
UPLIFT	\$4,632.41	(\$0.02)	(\$2,312.15)	(\$0.88)	(\$0.04)	(\$0.01)	
RESIDUALS	\$693.34	\$4.65	\$6,693.54	\$2,945.92	\$237.19	(\$61.85)	
ANCILLARY SERVICES	(\$898.56)	(\$920.92)	(\$1,968.77)	(\$1,150.61)	(\$1,371.54)	(\$1,231.77)	
TCC	\$0.00	\$0.00	\$0.00	\$0.00	\$0.00	\$0.00	



SETTLEMENTS REPORT
September 2017 Settlement Adjustment
February 7, 2018

Initial Settlement – Market Supply Analysis

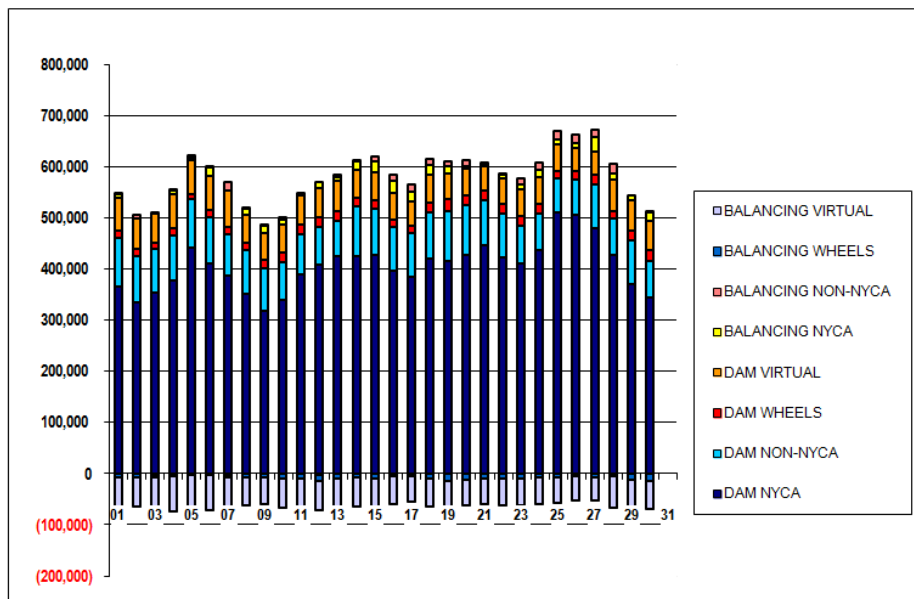
	MONDAY	TUESDAY	WEDNESDAY	THURSDAY	FRIDAY	SATURDAY	SUNDAY
					1	2	3
DAM NYCA					365,216	334,880	352,615
DAM NON-NYCA					94,685	90,286	85,021
DAM WHEELS					15,584	13,930	12,932
DAM VIRTUAL					63,311	59,013	56,154
BALANCING NYCA					6,050	(1,220)	377
BALANCING NON-NYCA					3,017	7,322	(3,708)
BALANCING WHEELS					(7,400)	(5,746)	(4,748)
BALANCING VIRTUAL					(63,311)	(59,013)	(56,154)
	4	5	6	7	8	9	10
DAM NYCA	377,066	440,779	409,433	385,719	350,465	317,970	337,991
DAM NON-NYCA	86,909	94,948	92,155	82,341	86,263	82,900	74,232
DAM WHEELS	14,963	10,748	12,450	13,474	15,098	15,523	18,644
DAM VIRTUAL	66,776	64,757	67,313	71,117	54,585	53,468	55,858
BALANCING NYCA	6,542	5,848	15,754	(2,091)	10,570	14,312	9,128
BALANCING NON-NYCA	1,662	3,863	3,896	15,673	3,799	1,232	5,079
BALANCING WHEELS	(6,729)	(2,564)	(4,266)	(5,290)	(6,914)	(7,339)	(10,460)
BALANCING VIRTUAL	(66,776)	(64,757)	(67,313)	(71,117)	(54,585)	(53,468)	(55,858)
	11	12	13	14	15	16	17
DAM NYCA	388,022	406,863	424,146	424,958	426,311	395,845	383,287
DAM NON-NYCA	79,386	75,060	69,795	96,118	90,260	85,235	85,956
DAM WHEELS	18,315	17,782	19,377	16,401	18,068	14,013	14,113
DAM VIRTUAL	57,395	57,289	57,427	56,633	54,111	53,819	49,081
BALANCING NYCA	2,634	13,160	9,187	16,385	22,262	24,275	18,461
BALANCING NON-NYCA	2,360	(4,389)	3,226	2,569	8,967	11,237	13,868
BALANCING WHEELS	(10,131)	(9,598)	(11,193)	(8,217)	(9,884)	(5,829)	(6,511)
BALANCING VIRTUAL	(57,395)	(57,289)	(57,427)	(56,633)	(54,111)	(53,819)	(49,081)
	18	19	20	21	22	23	24
DAM NYCA	420,137	414,005	426,520	446,037	421,483	409,856	435,639
DAM NON-NYCA	90,077	98,244	96,727	86,783	85,340	74,140	73,188
DAM WHEELS	18,742	22,878	20,426	19,466	19,616	17,784	17,875
DAM VIRTUAL	54,179	50,219	51,382	48,730	50,393	52,956	51,993
BALANCING NYCA	20,380	15,746	5,623	3,837	6,771	11,034	15,234
BALANCING NON-NYCA	10,423	9,412	11,111	986	3,092	11,788	13,223
BALANCING WHEELS	(10,558)	(14,694)	(11,936)	(10,925)	(11,432)	(9,560)	(9,192)
BALANCING VIRTUAL	(54,179)	(50,219)	(51,382)	(48,730)	(50,393)	(52,956)	(51,993)
	25	26	27	28	29	30	
DAM NYCA	510,217	505,962	479,423	426,342	369,178	344,097	
DAM NON-NYCA	65,806	67,930	86,168	72,076	85,866	70,429	
DAM WHEELS	16,229	16,231	17,223	14,939	18,935	22,530	
DAM VIRTUAL	51,937	46,922	45,064	59,764	59,220	55,373	
BALANCING NYCA	8,897	8,212	30,619	13,195	10,340	18,586	
BALANCING NON-NYCA	17,362	15,853	11,994	19,714	(1,652)	1,447	
BALANCING WHEELS	(7,063)	(6,566)	(8,949)	(6,755)	(10,751)	(14,346)	
BALANCING VIRTUAL	(51,937)	(46,922)	(45,064)	(59,764)	(59,220)	(55,373)	



SETTLEMENTS REPORT
September 2017 Settlement Adjustment
February 7, 2018

4-Month Settlement Adjustment – Market Supply Analysis

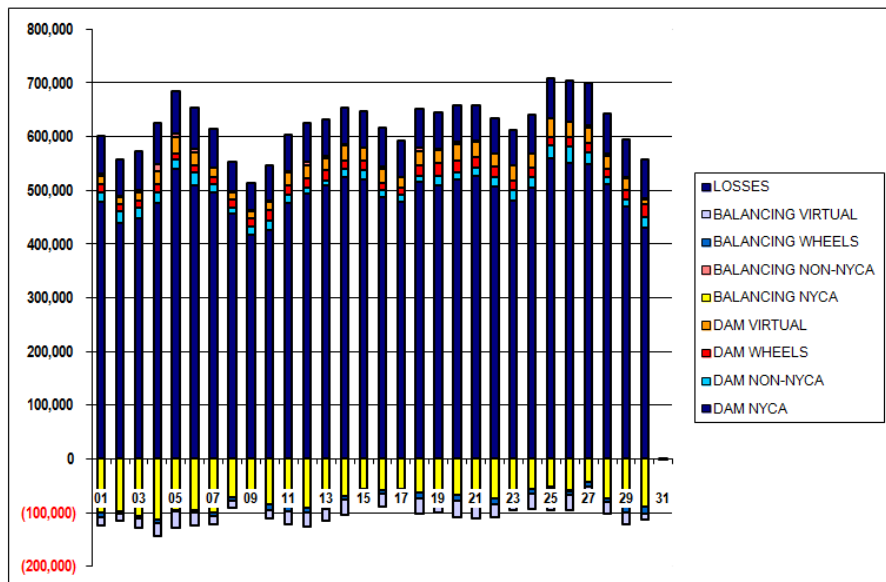
	MONDAY	TUESDAY	WEDNESDAY	THURSDAY	FRIDAY	SATURDAY	SUNDAY
					1	2	3
DAM NYCA					365,216	334,880	352,615
DAM NON-NYCA					94,685	90,286	85,021
DAM WHEELS					15,584	13,930	12,932
DAM VIRTUAL					63,311	59,013	56,154
BALANCING NYCA					5,809	(1,229)	337
BALANCING NON-NYCA					3,017	7,322	(3,708)
BALANCING WHEELS					(7,400)	(5,746)	(4,748)
BALANCING VIRTUAL					(63,311)	(59,013)	(56,154)
	4	5	6	7	8	9	10
DAM NYCA	377,066	440,779	409,433	385,719	350,465	317,970	337,991
DAM NON-NYCA	86,909	94,948	92,155	82,341	86,263	82,900	74,232
DAM WHEELS	14,963	10,748	12,450	13,474	15,098	15,523	18,644
DAM VIRTUAL	66,776	64,757	67,313	71,117	54,585	53,468	55,858
BALANCING NYCA	6,465	5,774	15,681	(2,165)	10,543	14,295	9,113
BALANCING NON-NYCA	1,662	3,863	3,896	15,673	3,799	1,232	5,079
BALANCING WHEELS	(6,729)	(2,564)	(4,266)	(5,290)	(6,914)	(7,339)	(10,460)
BALANCING VIRTUAL	(66,776)	(64,757)	(67,313)	(71,117)	(54,585)	(53,468)	(55,858)
	11	12	13	14	15	16	17
DAM NYCA	388,022	406,863	424,146	424,958	426,311	395,845	383,287
DAM NON-NYCA	79,386	75,060	69,795	96,118	90,260	85,235	85,956
DAM WHEELS	18,315	17,782	19,377	16,401	18,068	14,013	14,113
DAM VIRTUAL	57,395	57,289	57,427	56,633	54,111	53,819	49,081
BALANCING NYCA	2,403	13,073	8,933	16,201	22,104	24,112	18,262
BALANCING NON-NYCA	2,360	(4,389)	3,226	2,569	8,967	11,237	13,868
BALANCING WHEELS	(10,131)	(9,598)	(11,193)	(8,217)	(9,884)	(5,829)	(6,611)
BALANCING VIRTUAL	(57,395)	(57,289)	(57,427)	(56,633)	(54,111)	(53,819)	(49,081)
	18	19	20	21	22	23	24
DAM NYCA	420,137	414,005	426,520	446,037	421,483	409,856	435,639
DAM NON-NYCA	90,077	98,244	96,727	86,783	85,340	74,140	73,188
DAM WHEELS	18,742	22,878	20,426	19,466	19,616	17,784	17,875
DAM VIRTUAL	54,179	50,219	51,382	48,730	50,393	52,956	51,693
BALANCING NYCA	20,219	15,718	5,478	3,822	6,757	11,020	15,215
BALANCING NON-NYCA	10,423	9,412	11,111	986	3,092	11,788	13,223
BALANCING WHEELS	(10,556)	(14,694)	(11,936)	(10,925)	(11,432)	(9,560)	(9,192)
BALANCING VIRTUAL	(54,179)	(50,219)	(51,382)	(48,730)	(50,393)	(52,956)	(51,693)
	25	26	27	28	29	30	
DAM NYCA	510,217	505,962	479,423	426,342	369,178	344,097	
DAM NON-NYCA	65,606	67,930	86,168	72,076	85,866	70,429	
DAM WHEELS	16,229	16,231	17,223	14,939	18,935	22,530	
DAM VIRTUAL	51,937	46,922	45,064	59,764	59,220	55,373	
BALANCING NYCA	8,891	8,194	30,623	13,202	10,260	18,571	
BALANCING NON-NYCA	17,362	15,853	11,994	19,714	(1,652)	1,447	
BALANCING WHEELS	(7,063)	(6,566)	(8,949)	(8,755)	(6,755)	(10,751)	
BALANCING VIRTUAL	(51,937)	(46,922)	(45,064)	(59,764)	(59,220)	(55,373)	



SETTLEMENTS REPORT
September 2017 Settlement Adjustment
February 7, 2018

Initial Settlement – Market Withdrawals Analysis

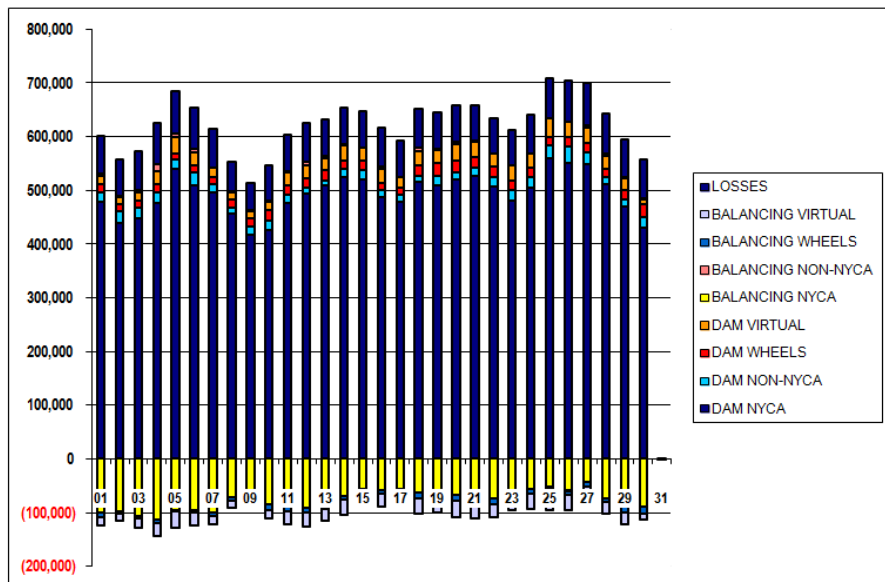
	MONDAY	TUESDAY	WEDNESDAY	THURSDAY	FRIDAY	SATURDAY	SUNDAY
					1	2	3
DAM NYCA					477,740	439,463	447,724
DAM NON-NYCA					18,348	20,549	18,352
DAM WHEELS					15,584	13,930	12,932
DAM VIRTUAL					15,477	13,143	16,515
BALANCING NYCA					(101,638)	(98,087)	(107,843)
BALANCING NON-NYCA					2,973	2,132	4,364
BALANCING WHEELS					(7,400)	(5,746)	(4,748)
BALANCING VIRTUAL					(15,477)	(13,143)	(16,515)
UFE/LOSSES					71,304	67,201	71,668
	4	5	6	7	8	9	10
DAM NYCA	475,647	539,128	508,615	494,644	455,122	416,612	426,171
DAM NON-NYCA	19,808	17,232	24,066	16,132	12,667	16,050	16,837
DAM WHEELS	14,963	10,748	12,450	13,474	15,098	15,523	18,644
DAM VIRTUAL	23,746	30,820	23,679	16,327	12,683	12,530	15,047
BALANCING NYCA	(113,387)	(96,325)	(96,439)	(101,533)	(72,437)	(69,249)	(85,362)
BALANCING NON-NYCA	14,593	7,201	7,019	1,769	2,234	2,703	2,146
BALANCING WHEELS	(6,729)	(2,564)	(4,266)	(5,290)	(6,914)	(7,339)	(10,480)
BALANCING VIRTUAL	(23,746)	(30,820)	(23,679)	(16,327)	(12,683)	(12,530)	(15,047)
UFE/LOSSES	75,440	78,127	77,905	70,556	53,483	50,281	66,623
	11	12	13	14	15	16	17
DAM NYCA	476,064	492,652	507,562	524,898	519,537	485,930	476,850
DAM NON-NYCA	14,844	11,315	9,859	13,439	17,571	13,345	13,375
DAM WHEELS	18,315	17,782	19,377	16,401	18,068	14,013	14,113
DAM VIRTUAL	23,386	24,581	22,823	28,333	22,308	25,754	19,116
BALANCING NYCA	(88,540)	(92,050)	(82,927)	(69,165)	(57,593)	(58,877)	(55,958)
BALANCING NON-NYCA	1,893	6,550	3,084	1,809	(91)	4,325	(454)
BALANCING WHEELS	(10,131)	(9,598)	(11,193)	(8,217)	(9,884)	(5,829)	(6,611)
BALANCING VIRTUAL	(23,386)	(24,581)	(22,823)	(28,333)	(22,308)	(25,754)	(19,116)
UFE/LOSSES	67,909	72,141	68,522	68,865	68,118	71,707	67,560
	18	19	20	21	22	23	24
DAM NYCA	515,025	509,269	520,382	526,245	506,823	480,600	504,209
DAM NON-NYCA	12,070	17,116	13,101	15,865	16,408	18,669	19,000
DAM WHEELS	18,742	22,878	20,426	19,466	19,616	17,784	17,875
DAM VIRTUAL	27,196	25,789	30,523	29,027	24,037	27,748	26,652
BALANCING NYCA	(64,219)	(59,417)	(66,858)	(71,501)	(73,580)	(59,735)	(56,484)
BALANCING NON-NYCA	5,755	678	5,485	946	1,240	1,042	(849)
BALANCING WHEELS	(10,558)	(14,694)	(11,936)	(10,925)	(11,432)	(9,560)	(9,192)
BALANCING VIRTUAL	(27,196)	(25,789)	(30,523)	(29,027)	(24,037)	(27,748)	(26,652)
UFE/LOSSES	72,225	69,733	67,727	66,073	65,781	66,228	71,389
	25	26	27	28	29	30	
DAM NYCA	558,639	551,191	548,029	510,211	468,406	430,080	
DAM NON-NYCA	23,601	30,489	21,097	13,732	13,464	20,185	
DAM WHEELS	16,229	16,231	17,223	14,939	18,935	22,530	
DAM VIRTUAL	35,216	28,871	29,762	23,362	21,791	10,116	
BALANCING NYCA	(52,652)	(59,260)	(44,070)	(73,358)	(89,401)	(88,993)	
BALANCING NON-NYCA	(907)	(1,722)	4,594	4,750	2,342	2,553	
BALANCING WHEELS	(7,063)	(6,566)	(8,949)	(6,755)	(10,751)	(14,346)	
BALANCING VIRTUAL	(35,216)	(28,871)	(29,762)	(23,362)	(21,791)	(10,116)	
UFE/LOSSES	73,395	77,241	78,558	75,998	68,541	70,719	



SETTLEMENTS REPORT
September 2017 Settlement Adjustment
February 7, 2018

4-Month Settlement Adjustment – Market Withdrawals Analysis

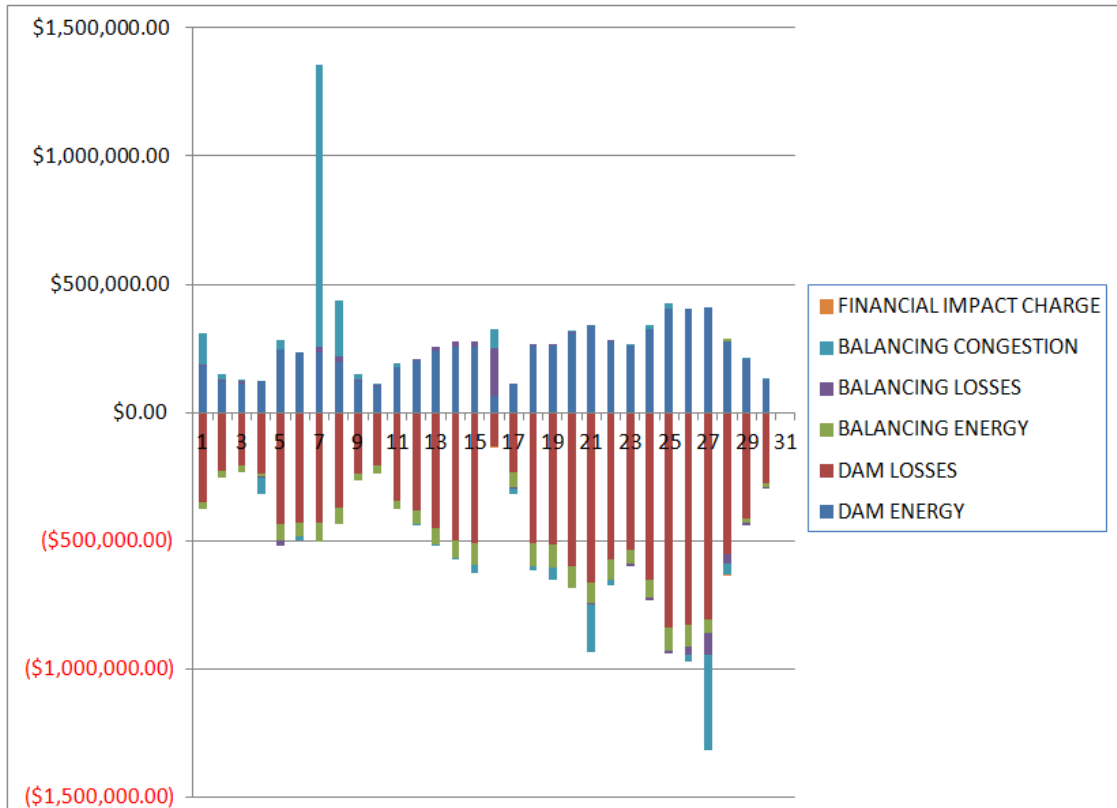
	MONDAY	TUESDAY	WEDNESDAY	THURSDAY	FRIDAY	SATURDAY	SUNDAY
					1	2	3
DAM NYCA					477,740	439,463	447,724
DAM NON-NYCA					18,348	20,549	18,352
DAM WHEELS					16,584	13,930	12,932
DAM VIRTUAL					16,477	13,143	16,515
BALANCING NYCA					(101,347)	(98,078)	(107,803)
BALANCING NON-NYCA					2,973	2,132	4,364
BALANCING WHEELS					(7,400)	(5,746)	(4,748)
BALANCING VIRTUAL					(15,477)	(13,143)	(16,515)
UFE/LOSSES					71,254	67,201	71,667
	4	5	6	7	8	9	10
DAM NYCA	476,647	539,128	508,615	494,644	455,122	416,612	426,171
DAM NON-NYCA	19,808	17,232	24,066	16,132	12,667	16,050	16,837
DAM WHEELS	14,963	10,748	12,450	13,474	15,098	15,523	18,644
DAM VIRTUAL	23,746	30,820	23,679	16,327	12,683	12,530	16,047
BALANCING NYCA	(113,309)	(96,249)	(96,366)	(101,461)	(72,445)	(69,231)	(85,352)
BALANCING NON-NYCA	14,593	7,201	7,019	1,769	2,234	2,703	2,146
BALANCING WHEELS	(6,729)	(2,564)	(4,266)	(5,290)	(6,914)	(7,339)	(10,460)
BALANCING VIRTUAL	(23,746)	(30,820)	(23,679)	(16,327)	(12,683)	(12,530)	(16,047)
UFE/LOSSES	75,440	78,125	77,905	70,558	53,519	50,281	66,628
	11	12	13	14	15	16	17
DAM NYCA	476,064	492,652	507,562	524,898	519,537	485,930	476,850
DAM NON-NYCA	14,844	11,315	9,859	13,439	17,671	13,345	13,375
DAM WHEELS	18,315	17,782	19,377	16,401	18,068	14,013	14,113
DAM VIRTUAL	23,386	24,581	22,823	28,333	22,308	25,754	19,116
BALANCING NYCA	(88,310)	(91,971)	(82,680)	(69,007)	(57,448)	(58,744)	(55,779)
BALANCING NON-NYCA	1,893	6,550	3,084	1,809	(91)	4,325	(454)
BALANCING WHEELS	(10,131)	(9,589)	(11,193)	(8,217)	(9,884)	(5,829)	(6,611)
BALANCING VIRTUAL	(23,386)	(24,581)	(22,823)	(28,333)	(22,308)	(25,754)	(19,116)
UFE/LOSSES	67,910	72,149	68,529	68,891	68,130	71,737	67,580
	18	19	20	21	22	23	24
DAM NYCA	515,025	509,269	520,382	526,245	506,823	480,600	504,209
DAM NON-NYCA	12,070	17,116	13,101	15,865	16,408	18,669	19,000
DAM WHEELS	18,742	22,878	20,426	19,466	19,616	17,784	17,875
DAM VIRTUAL	27,196	25,789	30,523	29,027	24,037	27,748	26,652
BALANCING NYCA	(64,063)	(59,393)	(66,717)	(71,484)	(73,565)	(59,721)	(56,462)
BALANCING NON-NYCA	5,755	678	5,485	946	1,240	1,042	(849)
BALANCING WHEELS	(10,558)	(14,694)	(11,936)	(10,925)	(11,432)	(9,560)	(9,192)
BALANCING VIRTUAL	(27,196)	(25,789)	(30,523)	(29,027)	(24,037)	(27,748)	(26,652)
UFE/LOSSES	72,231	69,737	67,730	66,072	65,779	66,228	71,386
	25	26	27	28	29	30	
DAM NYCA	558,639	551,191	548,029	510,211	468,406	430,080	
DAM NON-NYCA	23,601	30,489	21,097	13,732	13,464	20,185	
DAM WHEELS	16,229	16,231	17,223	14,939	18,935	22,530	
DAM VIRTUAL	35,216	28,871	29,762	23,362	21,791	10,116	
BALANCING NYCA	(52,642)	(59,243)	(44,077)	(73,365)	(89,317)	(88,970)	
BALANCING NON-NYCA	(907)	(1,722)	4,594	4,750	2,342	2,553	
BALANCING WHEELS	(7,063)	(6,566)	(8,949)	(6,755)	(10,751)	(14,346)	
BALANCING VIRTUAL	(35,216)	(28,871)	(29,762)	(23,362)	(21,791)	(10,116)	
UFE/LOSSES	73,391	77,242	78,560	75,999	68,538	70,712	



SETTLEMENTS REPORT
September 2017 Settlement Adjustment
February 7, 2018

Initial Settlement – Market Residuals Analysis

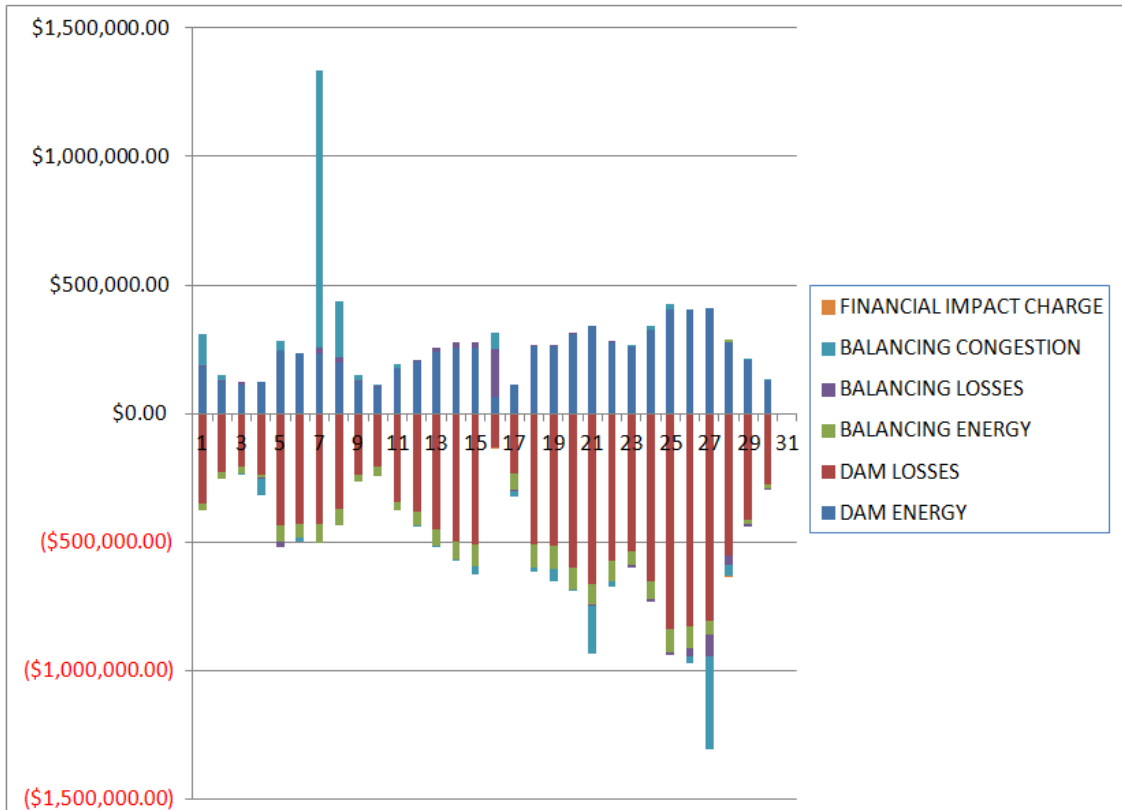
	MONDAY	TUESDAY	WEDNESDAY	THURSDAY	FRIDAY	SATURDAY	SUNDAY
					1	2	3
DAM ENERGY					\$180,905.32	\$121,758.43	\$110,912.09
DAM LOSSES					(\$350,581.66)	(\$226,848.18)	(\$206,686.78)
BALANCING ENERGY					(\$27,375.83)	(\$26,672.20)	(\$26,317.68)
BALANCING LOSSES					\$4,631.34	\$6,563.91	\$9,917.73
BALANCING CONGESTION					\$123,620.51	\$20,008.69	\$45.25
FINANCIAL IMPACT CHARGE					\$0.00	\$0.00	\$0.00
	4	5	6	7	8	9	10
DAM ENERGY	\$125,062.79	\$244,361.57	\$235,998.10	\$232,514.24	\$198,690.17	\$120,703.16	\$100,387.78
DAM LOSSES	(\$238,394.90)	(\$433,522.06)	(\$432,150.26)	(\$430,639.95)	(\$373,227.41)	(\$237,483.48)	(\$207,195.57)
BALANCING ENERGY	(\$13,283.81)	(\$67,886.90)	(\$49,666.80)	(\$72,900.02)	(\$63,319.92)	(\$30,232.23)	(\$34,505.31)
BALANCING LOSSES	(\$1,147.51)	(\$21,451.39)	(\$3,577.30)	\$25,439.56	\$19,051.81	\$6,834.20	\$6,573.42
BALANCING CONGESTION	(\$63,366.51)	\$36,473.81	(\$13,607.67)	\$1,099,301.76	\$219,249.33	\$23,892.91	\$1,163.81
FINANCIAL IMPACT CHARGE	\$0.00	\$0.00	\$0.00	\$0.00	\$0.00	\$0.00	\$0.00
	11	12	13	14	15	16	17
DAM ENERGY	\$173,609.37	\$201,422.42	\$240,100.04	\$254,469.99	\$257,208.34	\$62,912.85	\$114,522.55
DAM LOSSES	(\$346,669.64)	(\$381,151.76)	(\$450,535.81)	(\$497,025.12)	(\$510,829.34)	(\$131,123.42)	(\$231,619.99)
BALANCING ENERGY	(\$32,788.68)	(\$53,162.97)	(\$66,820.95)	(\$72,236.23)	(\$86,883.98)	\$2,547.52	(\$62,876.49)
BALANCING LOSSES	\$4,490.66	\$7,284.86	\$15,957.20	\$24,510.32	\$17,529.85	\$185,860.13	(\$5,606.89)
BALANCING CONGESTION	\$13,152.74	(\$6,550.97)	(\$1,482.31)	(\$820.00)	(\$30,805.97)	\$72,715.75	(\$21,310.73)
FINANCIAL IMPACT CHARGE	\$0.00	\$0.00	\$0.00	\$0.00	\$0.00	(\$12.88)	\$0.00
	18	19	20	21	22	23	24
DAM ENERGY	\$260,598.53	\$260,964.74	\$308,075.92	\$338,953.96	\$278,356.97	\$259,008.69	\$324,558.20
DAM LOSSES	(\$512,301.22)	(\$516,712.94)	(\$602,748.91)	(\$664,889.32)	(\$573,626.70)	(\$534,566.81)	(\$652,926.92)
BALANCING ENERGY	(\$88,189.77)	(\$86,870.00)	(\$80,497.69)	(\$79,057.21)	(\$80,440.97)	(\$52,974.40)	(\$70,861.92)
BALANCING LOSSES	\$6,143.77	\$1,920.19	\$4,078.87	(\$8,140.27)	\$5,734.71	(\$12,949.39)	(\$7,810.88)
BALANCING CONGESTION	(\$15,029.02)	(\$51,433.63)	\$1,435.14	(\$185,897.64)	(\$18,551.31)	\$8,897.87	\$16,321.63
FINANCIAL IMPACT CHARGE	\$0.00	\$0.00	\$0.00	\$0.00	\$0.00	\$0.00	\$0.00
	25	26	27	28	29	30	
DAM ENERGY	\$405,671.27	\$405,086.12	\$409,819.83	\$277,359.90	\$206,134.24	\$130,431.91	
DAM LOSSES	(\$839,715.35)	(\$830,035.93)	(\$807,658.82)	(\$551,589.26)	(\$411,940.03)	(\$277,667.63)	
BALANCING ENERGY	(\$91,345.14)	(\$86,764.11)	(\$54,741.61)	\$9,914.52	(\$20,467.78)	(\$15,465.18)	
BALANCING LOSSES	(\$10,732.63)	(\$29,204.73)	(\$84,236.44)	(\$36,245.26)	(\$6,665.82)	(\$1,578.92)	
BALANCING CONGESTION	\$18,992.30	(\$28,279.48)	(\$370,027.66)	(\$47,161.92)	\$97.47	\$1,958.89	
FINANCIAL IMPACT CHARGE	\$0.00	\$0.00	\$0.00	(\$1,065.27)	\$0.00	\$0.00	



SETTLEMENTS REPORT
September 2017 Settlement Adjustment
February 7, 2018

4-Month Settlement Adjustment – Market Residuals Analysis

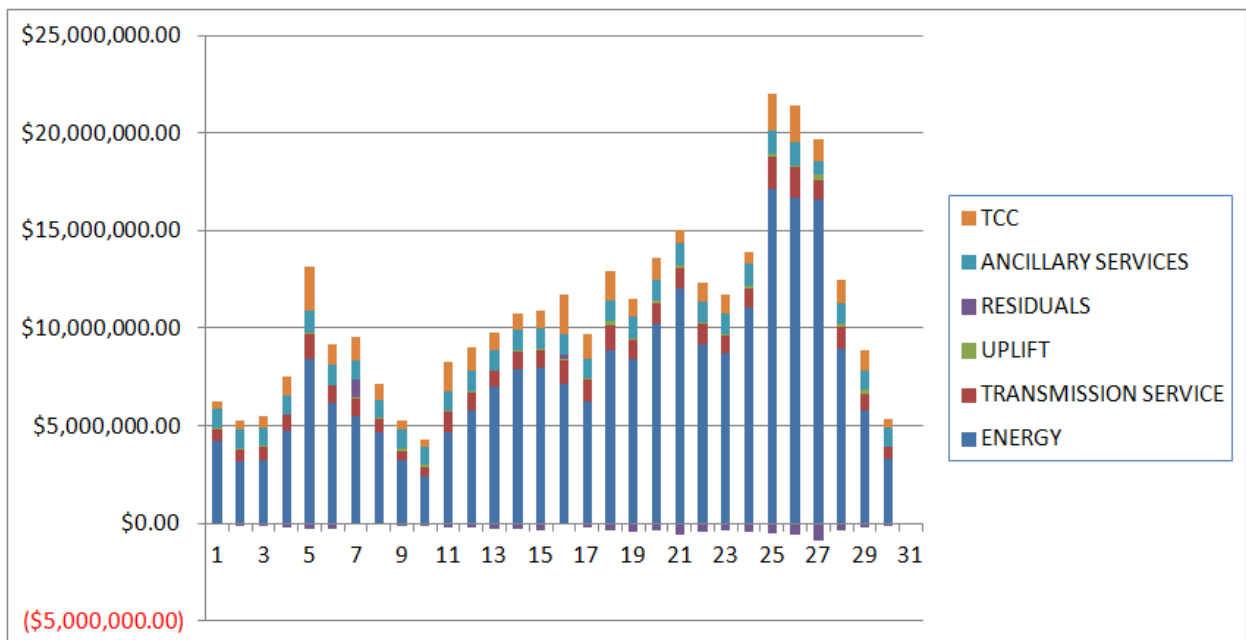
	MONDAY	TUESDAY	WEDNESDAY	THURSDAY	FRIDAY	SATURDAY	SUNDAY
					1	2	3
DAM ENERGY					\$180,905.32	\$121,758.43	\$110,912.10
DAM LOSSES					(\$350,581.66)	(\$226,848.18)	(\$206,686.77)
BALANCING ENERGY					(\$27,375.33)	(\$26,666.21)	(\$26,314.57)
BALANCING LOSSES					\$4,611.48	\$6,540.55	\$9,928.15
BALANCING CONGESTION					\$123,371.48	\$19,881.62	(\$123.18)
FINANCIAL IMPACT CHARGE					\$0.00	\$0.00	\$0.00
	4	5	6	7	8	9	10
DAM ENERGY	\$125,062.79	\$244,361.57	\$235,998.10	\$232,514.25	\$198,690.16	\$120,703.16	\$100,387.77
DAM LOSSES	(\$238,394.89)	(\$433,522.06)	(\$432,150.26)	(\$430,639.95)	(\$373,227.41)	(\$237,483.47)	(\$207,195.57)
BALANCING ENERGY	(\$13,286.53)	(\$67,859.11)	(\$49,669.43)	(\$72,904.34)	(\$64,800.61)	(\$30,233.21)	(\$34,615.43)
BALANCING LOSSES	(\$1,112.91)	(\$21,298.10)	(\$3,611.17)	\$25,469.39	\$18,886.14	\$6,785.31	\$6,536.48
BALANCING CONGESTION	(\$63,640.75)	\$35,307.50	(\$13,642.09)	\$1,077,256.26	\$217,471.57	\$23,302.30	\$1,163.81
FINANCIAL IMPACT CHARGE	\$0.00	\$0.00	\$0.00	\$0.00	\$0.00	\$0.00	\$0.00
	11	12	13	14	15	16	17
DAM ENERGY	\$173,609.38	\$201,422.42	\$240,100.04	\$254,469.99	\$257,208.34	\$62,912.85	\$114,522.54
DAM LOSSES	(\$346,669.64)	(\$381,151.76)	(\$450,535.82)	(\$497,025.12)	(\$510,829.34)	(\$131,123.42)	(\$231,619.99)
BALANCING ENERGY	(\$32,787.63)	(\$53,346.92)	(\$67,020.31)	(\$72,790.86)	(\$87,165.91)	\$731.67	(\$63,295.69)
BALANCING LOSSES	\$4,531.12	\$7,964.99	\$17,368.44	\$24,607.02	\$17,716.65	\$185,658.01	(\$5,939.82)
BALANCING CONGESTION	\$13,124.44	(\$6,628.01)	(\$334.38)	(\$10.38)	(\$30,480.92)	\$62,600.28	(\$22,655.00)
FINANCIAL IMPACT CHARGE	\$0.00	\$0.00	\$0.00	\$0.00	\$0.00	(\$12.88)	\$0.00
	18	19	20	21	22	23	24
DAM ENERGY	\$260,598.53	\$260,964.74	\$308,075.92	\$338,953.97	\$278,356.97	\$259,008.69	\$324,558.20
DAM LOSSES	(\$512,301.23)	(\$516,712.94)	(\$602,748.91)	(\$664,889.32)	(\$573,626.70)	(\$534,566.81)	(\$652,926.92)
BALANCING ENERGY	(\$88,310.78)	(\$86,960.95)	(\$80,578.67)	(\$79,022.60)	(\$80,382.00)	(\$52,970.79)	(\$70,795.43)
BALANCING LOSSES	\$5,958.12	\$1,938.34	\$4,115.40	(\$7,958.49)	\$6,001.11	(\$12,682.06)	(\$7,681.87)
BALANCING CONGESTION	(\$15,405.55)	(\$51,506.20)	(\$603.38)	(\$185,048.68)	(\$18,525.12)	\$8,379.42	\$17,106.35
FINANCIAL IMPACT CHARGE	\$0.00	\$0.00	\$0.00	\$0.00	\$0.00	\$0.00	\$0.00
	25	26	27	28	29	30	
DAM ENERGY	\$405,671.27	\$405,086.11	\$409,819.83	\$277,359.90	\$206,134.25	\$130,431.91	
DAM LOSSES	(\$839,715.34)	(\$830,035.94)	(\$807,658.82)	(\$551,589.25)	(\$411,940.03)	(\$277,667.63)	
BALANCING ENERGY	(\$91,167.50)	(\$86,794.73)	(\$54,704.39)	\$9,906.90	(\$20,380.70)	(\$15,435.69)	
BALANCING LOSSES	(\$10,618.53)	(\$29,152.69)	(\$84,843.64)	(\$36,003.12)	(\$6,533.69)	(\$1,615.40)	
BALANCING CONGESTION	\$19,393.89	(\$28,296.23)	(\$362,764.14)	(\$44,450.49)	\$115.44	\$1,904.03	
FINANCIAL IMPACT CHARGE	\$0.00	\$0.00	\$0.00	(\$1,065.31)	\$0.00	\$0.00	



SETTLEMENTS REPORT
September 2017 Settlement Adjustment
February 7, 2018

Initial Settlement – Market Costs Analysis

	MONDAY	TUESDAY	WEDNESDAY	THURSDAY	FRIDAY	SATURDAY	SUNDAY
					1	2	3
ENERGY					\$4,235,571.53	\$3,151,137.44	\$3,266,897.58
TRANSMISSION SERVICE					\$624,445.36	\$612,365.19	\$639,226.86
UPLIFT					\$46,311.92	\$106,335.49	\$63,101.35
RESIDUALS					(\$68,800.32)	(\$105,189.35)	(\$112,129.39)
ANCILLARY SERVICES					\$948,881.65	\$943,797.65	\$946,906.79
TCC					\$368,988.34	\$485,630.02	\$576,813.66
	4	5	6	7	8	9	10
ENERGY	\$4,744,247.71	\$8,422,227.84	\$6,167,995.32	\$5,471,058.09	\$4,693,868.57	\$3,233,099.03	\$2,410,513.13
TRANSMISSION SERVICE	\$800,082.86	\$1,312,439.18	\$898,797.48	\$934,139.64	\$659,489.56	\$500,580.22	\$500,625.74
UPLIFT	\$49,561.53	\$6,851.18	\$44,664.33	\$98,370.30	\$44,922.05	\$129,345.91	\$94,876.50
RESIDUALS	(\$191,129.94)	(\$242,024.97)	(\$263,003.73)	\$853,715.59	\$443.98	(\$116,285.44)	(\$133,575.87)
ANCILLARY SERVICES	\$966,090.35	\$1,139,060.66	\$1,000,775.84	\$960,201.53	\$956,893.99	\$968,511.18	\$950,532.16
TCC	\$964,620.03	\$2,300,132.06	\$1,095,687.92	\$1,223,700.52	\$793,641.92	\$459,136.06	\$377,067.31
	11	12	13	14	15	16	17
ENERGY	\$4,696,432.92	\$5,823,330.51	\$6,988,695.28	\$7,903,228.42	\$7,949,237.48	\$7,133,541.35	\$6,284,479.14
TRANSMISSION SERVICE	\$1,029,971.19	\$861,950.96	\$836,758.08	\$902,233.61	\$939,829.48	\$1,240,911.30	\$1,068,886.41
UPLIFT	\$100,352.54	\$82,603.79	\$36,540.85	\$53,445.80	\$58,819.14	\$76,618.72	\$76,867.65
RESIDUALS	(\$188,205.55)	(\$232,158.42)	(\$262,781.83)	(\$291,101.04)	(\$353,781.10)	\$192,899.95	(\$206,891.55)
ANCILLARY SERVICES	\$963,063.89	\$1,023,529.75	\$1,013,917.31	\$1,074,847.02	\$1,059,433.35	\$1,065,574.52	\$1,016,156.78
TCC	\$1,465,693.85	\$1,204,152.63	\$927,701.89	\$829,969.55	\$914,270.10	\$2,021,593.61	\$1,287,685.48
	18	19	20	21	22	23	24
ENERGY	\$8,878,659.21	\$8,461,955.50	\$10,218,395.74	\$12,015,257.27	\$9,203,696.13	\$8,707,272.48	\$11,063,199.30
TRANSMISSION SERVICE	\$1,275,465.45	\$972,191.85	\$1,056,893.18	\$1,069,763.95	\$995,430.03	\$933,689.01	\$986,424.41
UPLIFT	\$192,229.05	\$74,908.61	\$157,341.15	\$117,508.56	\$104,715.88	\$78,183.25	\$95,953.12
RESIDUALS	(\$348,777.71)	(\$392,131.64)	(\$369,656.67)	(\$599,030.48)	(\$388,527.30)	(\$332,584.04)	(\$390,719.89)
ANCILLARY SERVICES	\$1,076,762.94	\$1,072,867.26	\$1,067,543.82	\$1,111,005.25	\$1,062,386.61	\$1,065,176.68	\$1,122,587.97
TCC	\$1,499,044.09	\$913,609.68	\$1,090,624.84	\$734,733.73	\$944,363.94	\$971,018.41	\$629,926.77
	25	26	27	28	29	30	
ENERGY	\$17,121,400.49	\$16,671,078.43	\$16,594,055.04	\$8,961,091.70	\$5,772,614.59	\$3,331,789.48	
TRANSMISSION SERVICE	\$1,664,380.99	\$1,594,779.95	\$1,003,072.86	\$1,128,135.46	\$886,833.14	\$573,347.94	
UPLIFT	\$157,945.85	\$41,956.86	\$314,851.62	\$123,619.07	\$207,857.65	\$55,624.04	
RESIDUALS	(\$517,129.55)	(\$569,198.13)	(\$906,844.70)	(\$348,787.29)	(\$232,841.92)	(\$162,320.93)	
ANCILLARY SERVICES	\$1,202,915.46	\$1,233,589.54	\$654,371.65	\$1,037,678.63	\$981,594.15	\$923,347.47	
TCC	\$1,823,775.18	\$1,829,021.58	\$1,116,318.65	\$1,234,323.47	\$996,618.20	\$436,295.53	



SETTLEMENTS REPORT
September 2017 Settlement Adjustment
February 7, 2018

4-Month Settlement Adjustment – Market Costs Analysis

	MONDAY	TUESDAY	WEDNESDAY	THURSDAY	FRIDAY	SATURDAY	SUNDAY
ENERGY					1	2	3
TRANSMISSION SERVICE					\$4,232,088.75	\$3,151,207.40	\$3,266,660.13
UPLIFT					\$623,617.89	\$611,713.43	\$638,651.27
RESIDUALS					\$46,311.59	\$106,335.50	\$63,101.36
ANCILLARY SERVICES					(\$69,068.71)	(\$105,333.79)	(\$112,284.27)
TCC					\$949,166.26	\$941,446.54	\$945,954.16
					\$367,252.26	\$486,912.00	\$576,813.66
	4	5	6	7	8	9	10
ENERGY	\$4,743,852.57	\$8,421,571.86	\$6,166,299.03	\$5,492,287.80	\$4,696,923.93	\$3,233,558.36	\$2,410,477.76
TRANSMISSION SERVICE	\$799,480.71	\$1,311,861.03	\$898,067.06	\$933,390.43	\$658,678.58	\$499,914.70	\$499,958.25
UPLIFT	\$49,561.58	\$6,851.17	\$44,664.31	\$98,370.31	\$44,922.04	\$129,345.93	\$94,876.51
RESIDUALS	(\$191,372.29)	(\$243,010.20)	(\$263,074.85)	\$831,695.61	(\$2,980.15)	(\$116,925.91)	(\$133,722.94)
ANCILLARY SERVICES	\$965,084.45	\$1,138,094.46	\$999,561.08	\$958,956.41	\$955,568.83	\$967,417.26	\$949,436.83
TCC	\$964,620.03	\$2,300,132.06	\$1,095,687.92	\$1,223,700.52	\$793,641.92	\$459,136.06	\$377,067.31
	11	12	13	14	15	16	17
ENERGY	\$4,693,541.35	\$5,821,147.44	\$6,981,817.79	\$7,897,945.98	\$7,944,111.52	\$7,140,678.79	\$6,279,509.76
TRANSMISSION SERVICE	\$1,029,179.90	\$861,308.83	\$836,012.18	\$901,500.94	\$939,081.93	\$1,240,123.95	\$1,068,006.29
UPLIFT	\$100,352.55	\$82,604.26	\$36,540.86	\$53,445.81	\$58,819.15	\$76,618.72	\$76,867.65
RESIDUALS	(\$188,192.33)	(\$231,739.28)	(\$260,422.03)	(\$290,749.35)	(\$353,551.18)	\$180,766.51	(\$208,987.96)
ANCILLARY SERVICES	\$961,708.27	\$1,018,717.13	\$1,012,631.63	\$1,073,606.24	\$1,058,171.71	\$1,082,876.46	\$1,019,006.15
TCC	\$1,465,693.85	\$1,207,893.37	\$927,701.89	\$829,969.55	\$914,270.10	\$2,002,968.07	\$1,283,348.71
	18	19	20	21	22	23	24
ENERGY	\$8,874,275.42	\$8,461,271.52	\$10,215,810.10	\$12,013,798.87	\$9,202,955.75	\$8,707,190.02	\$11,061,617.39
TRANSMISSION SERVICE	\$1,274,561.71	\$971,228.26	\$1,056,054.58	\$1,069,159.54	\$994,740.70	\$932,925.16	\$985,755.76
UPLIFT	\$192,229.05	\$74,908.62	\$157,341.15	\$117,508.60	\$104,715.88	\$78,183.22	\$95,953.13
RESIDUALS	(\$349,460.91)	(\$392,277.01)	(\$371,739.64)	(\$597,965.12)	(\$388,175.74)	(\$332,831.55)	(\$389,739.67)
ANCILLARY SERVICES	\$1,075,242.97	\$1,071,283.87	\$1,066,134.17	\$1,110,011.46	\$1,061,254.19	\$1,063,922.74	\$1,121,487.77
TCC	\$1,499,044.09	\$913,609.68	\$1,090,624.84	\$734,733.73	\$944,363.94	\$971,018.41	\$629,926.77
	25	26	27	28	29	30	
ENERGY	\$17,120,326.97	\$16,670,181.09	\$16,595,938.49	\$8,958,252.71	\$5,771,407.69	\$3,331,736.73	
TRANSMISSION SERVICE	\$1,663,833.54	\$1,594,220.06	\$1,002,602.06	\$1,127,431.30	\$886,008.68	\$572,599.02	
UPLIFT	\$162,578.26	\$41,956.84	\$312,539.47	\$123,618.19	\$207,857.61	\$55,624.03	
RESIDUALS	(\$516,436.21)	(\$569,193.48)	(\$900,151.16)	(\$345,841.37)	(\$232,604.73)	(\$162,382.78)	
ANCILLARY SERVICES	\$1,202,016.90	\$1,232,668.62	\$652,402.88	\$1,036,528.02	\$980,222.61	\$922,115.70	
TCC	\$1,823,775.18	\$1,829,021.58	\$1,116,318.65	\$1,234,323.47	\$996,618.20	\$436,295.53	

