

Load Forecasting Task Force Meeting

Load Forecast: Issues/Alternative Solutions

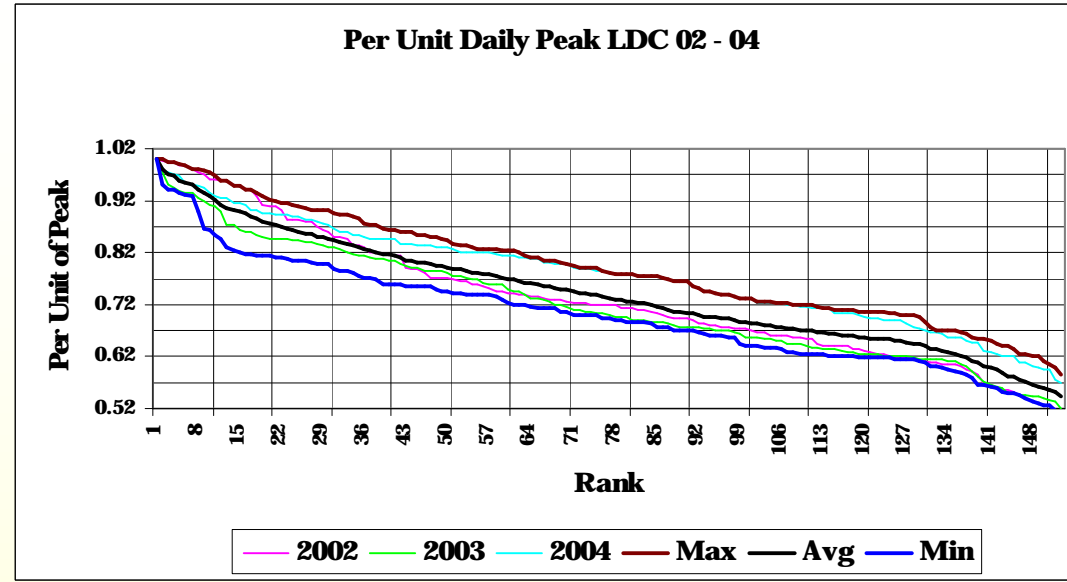
**March 31, 2005
NYISO Washington Ave**

For discussion purposes only

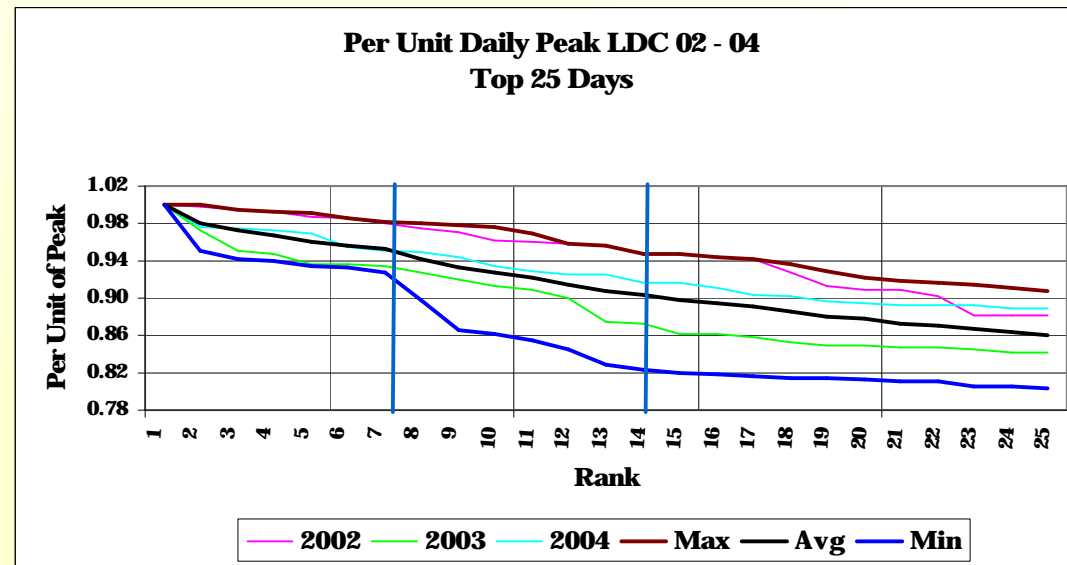
Glenn Haake Discussion

- load forecast in this year's study was understated due to the unusual weather experienced last year
- if the tariff should be revised so that it is more accurate
- better approach may be to use a weather adjusted number for each month
- Load Forecast Working Group should discuss this issue and evaluate alternative solutions
- completed by the end of the summer it could be used for next year's study
- However:
 - noted that the Load Forecast WG had just revised the tariff, which had been a lengthy process, and that the group had discussed this type of change for the study process and had decided against it

Load Duration Curves

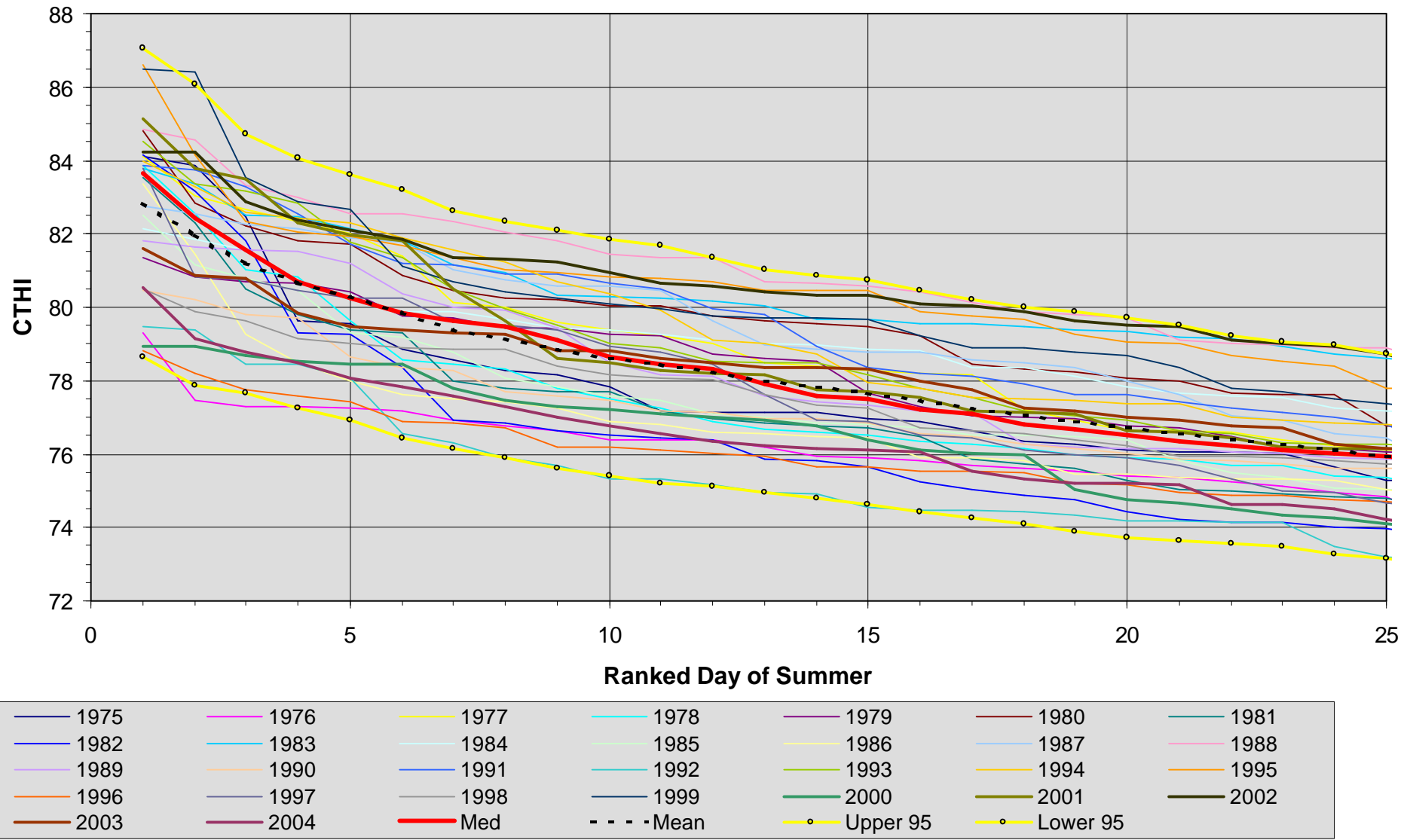


7 peaks within 5% of annual

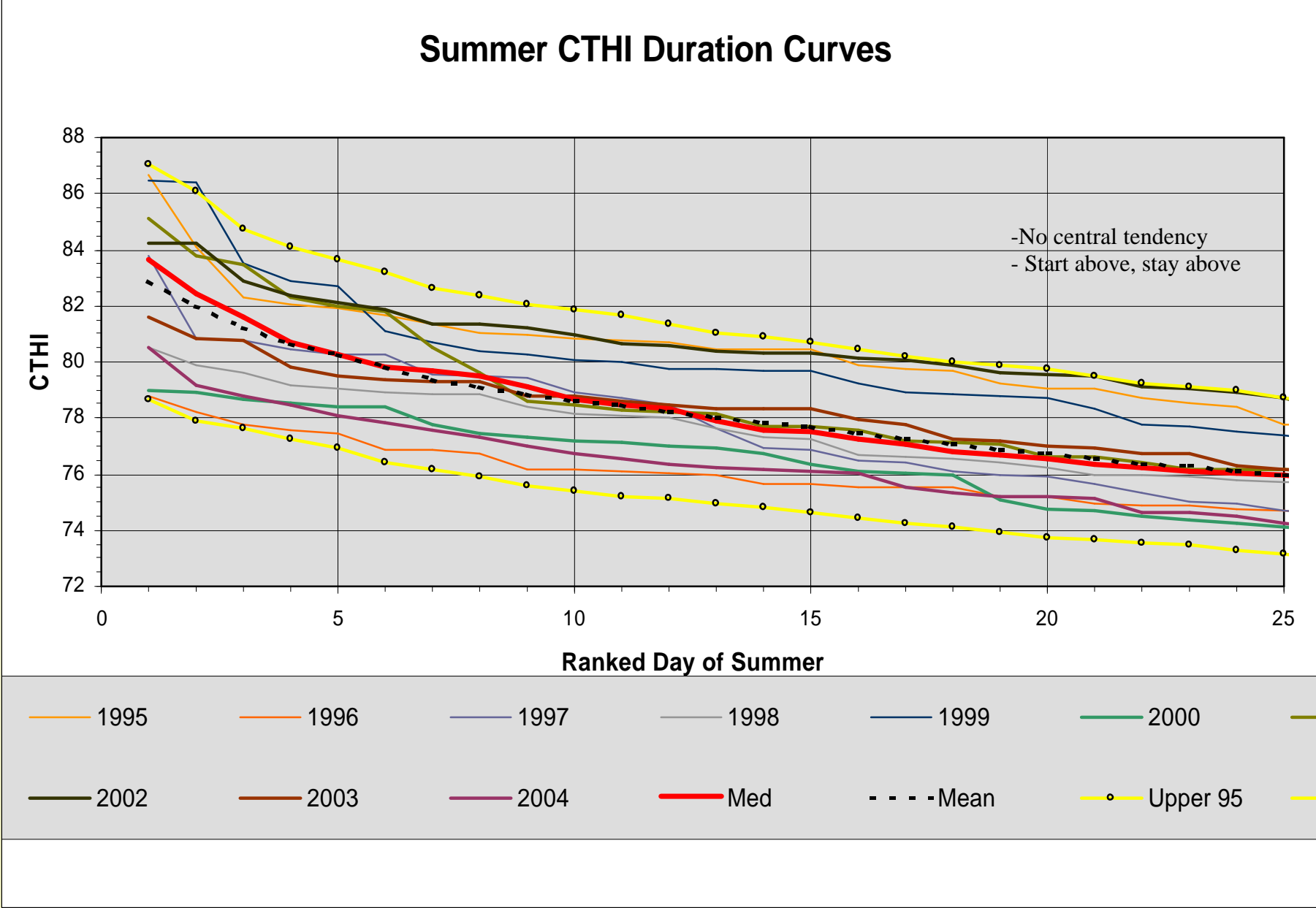


14 peaks within 10% of annual

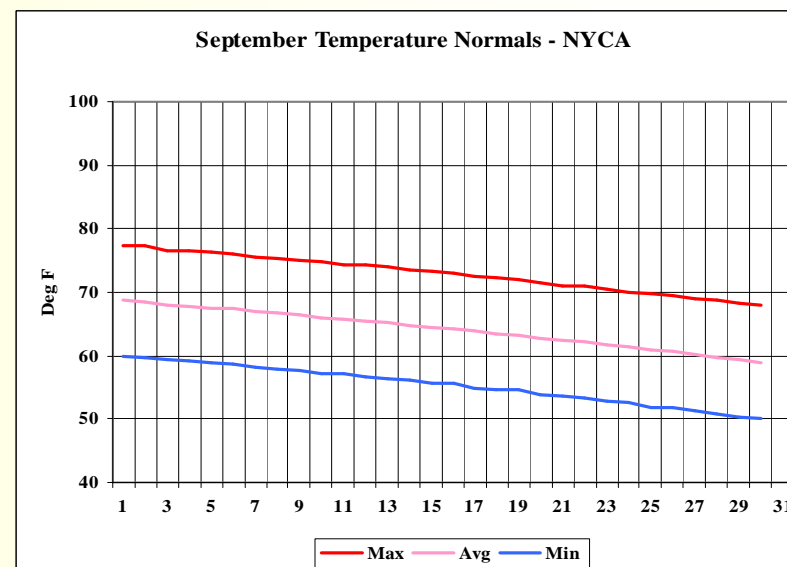
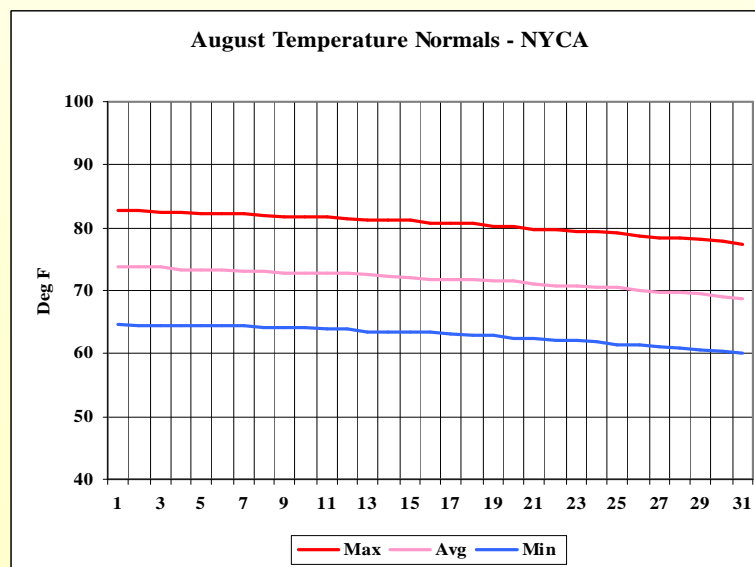
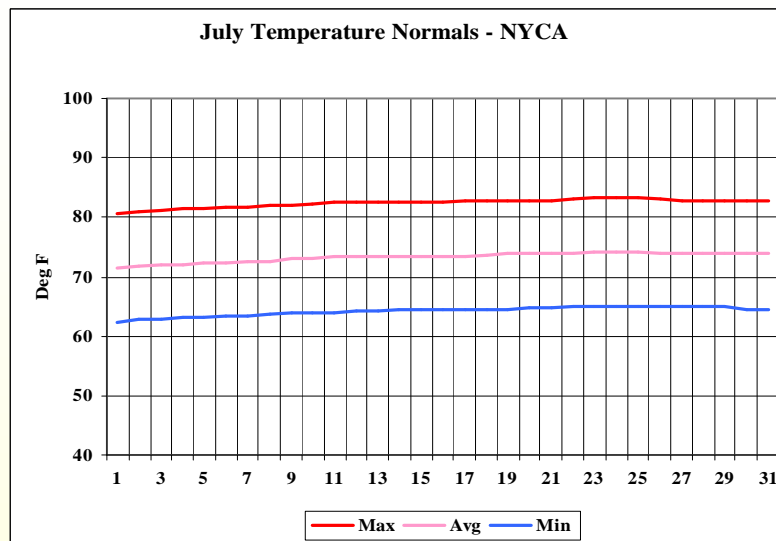
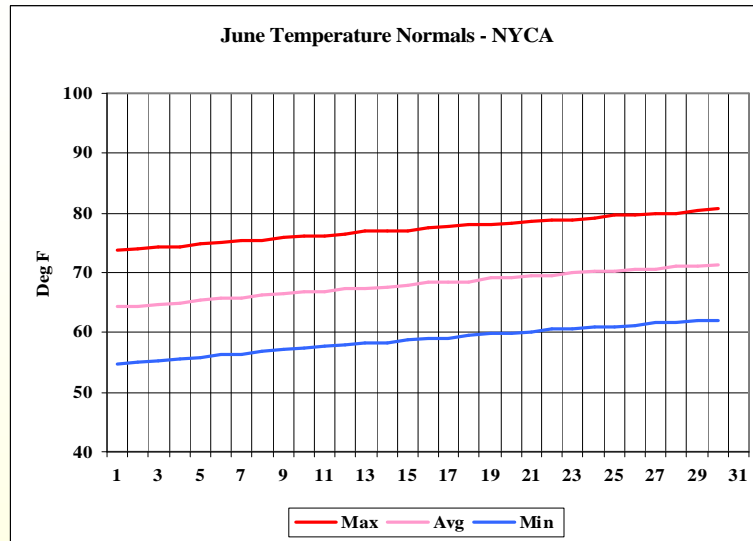
Summer CTHI Duration Curves

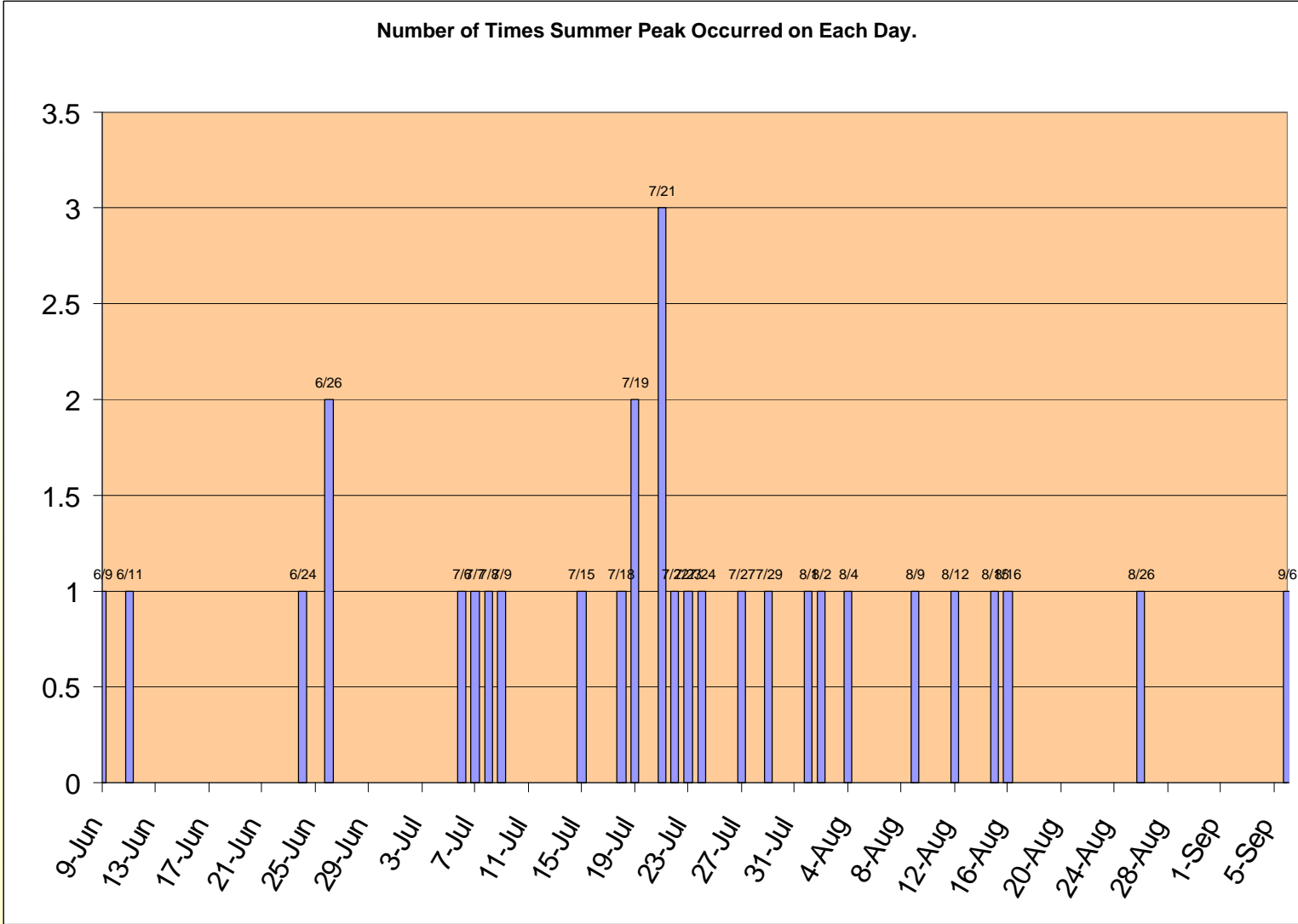


Summer CTHI Duration Curves



NYCA Dry Bulb Temperatures through the Summer





Dates of NYCA Peaks 1975 - 2004								
<u>Year</u>	<u>Peak</u>	<u>Mon</u>	<u>Day</u>		<u>Year</u>	<u>Peak</u>	<u>Mon</u>	<u>Day</u>
1975	20,001	8	1		1990	24,985	7	19
1976	19,262	6	24		1991	26,839	7	23
1977	21,214	7	21		1992	24,951	8	26
1978	20,418	8	16		1993	27,139	7	8
1979	20,402	8	2		1994	27,065	7	21
1980	21,742	7	21		1995	27,206	8	4
1981	21,437	7	9		1996	25,585	7	18
1982	21,444	7	19		1997	28,699	7	15
1983	21,842	9	6		1998	28,161	7	22
1984	21,870	6	11		1999	30,311	7	6
1985	22,926	8	15		2000	28,138	6	26
1986	22,942	7	7		2001	30,982	8	9
1987	24,427	7	24		2002	30,664	7	29
1988	25,720	8	12		2003	30,333	6	26
1989	25,390	7	27		2004	28,433	6	9

Now What

- **Are we prepared to redo the way the ICAP Load Forecast is done?**
 - **Is there a problem?**
 - **Is there a solution?**
- **Assuming “Yes” to the above**
 - **Catalog candidate solutions**
 - **Investigate each**
 - **Recommend candidate**
 - **Manual and tariff revision process**