

Market Operation's Report

*Business Issues Committee Meeting
December 6, 2006*

Agenda #3

Report Items

- Market Performance Highlights

Market Performance Highlights for November 2006

PRELIMINARY DATA (Most data through 11/27)

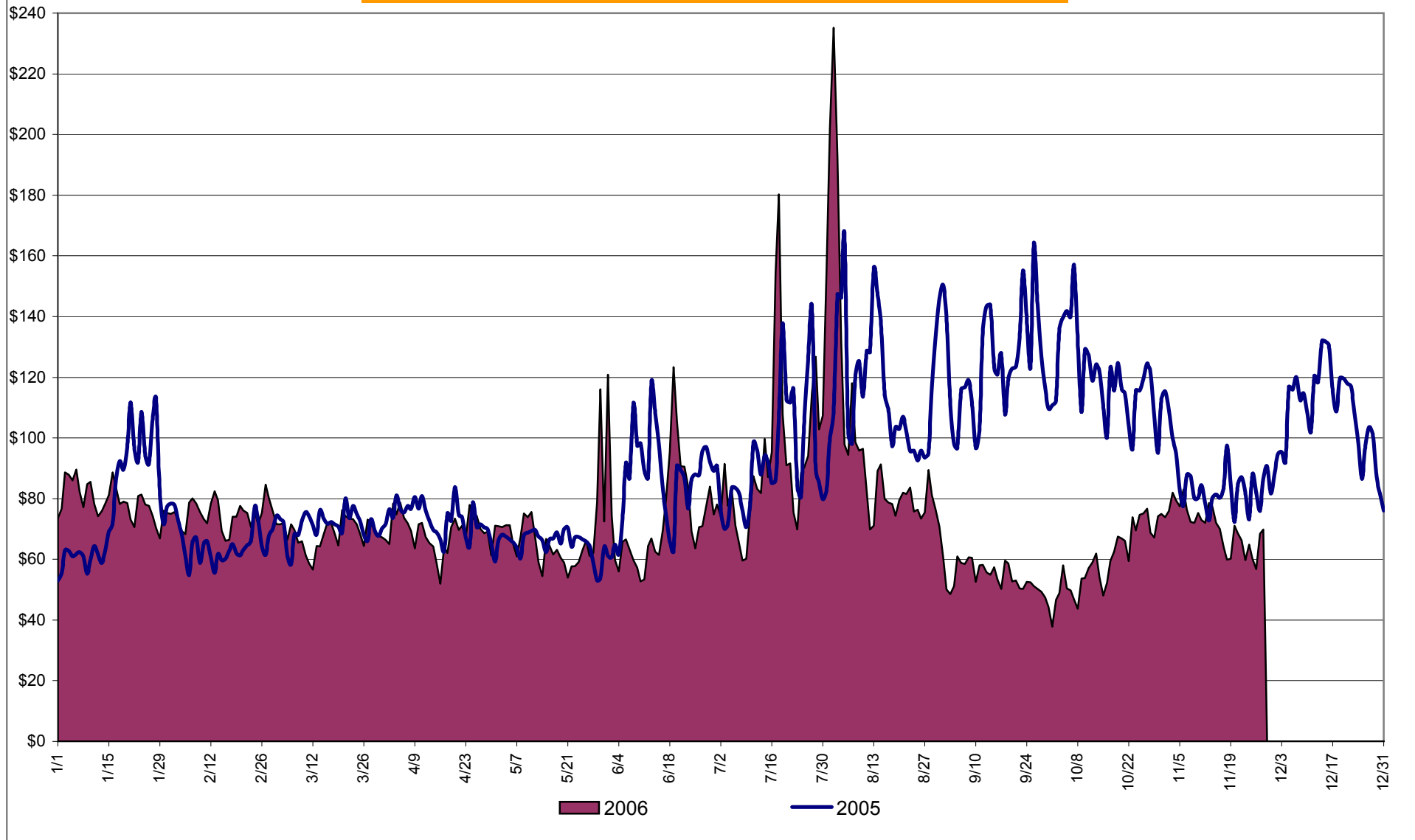
- LBMP for November is \$68.51/MWh, up from \$57.60/MWh in October.
 - Average monthly cost is \$71.11/MWh, up from \$60.38/MWh in October.
 - Day Ahead and Real Time LBMPs have increased from October.
- Fuel prices are mixed this month.
 - Kerosene is \$13.10/mmBTU, down from \$13.25/mmBTU in October
 - No. 2 Fuel Oil is \$11.62/mmBTU, down from \$11.72/mmBTU in October
 - No. 6 Fuel Oil is \$8.00/mmBTU, up from \$7.60/mmBTU in October
 - Natural Gas is \$7.88/mmBTU, up from \$6.23/mmBTU in October
- Uplift has decreased this month relative to October 2006.
 - Uplift (not including NYISO cost of operations) is \$0.22/MWh, down from \$0.68/MWh in October.
 - Total uplift (Schedule 1 components including NYISO Cost of Operations) decreased from \$17.2 million in October 2006 to \$10.4 million in November 2006.
- Virtual market activity continues to increase in November but has not yet reached historical seasonal levels.
- Regulation average costs have increased from October 2006, but are down from November 2005 costs.
- Ten minute spinning reserve average costs are up from October.

Daily NYISO Average Cost/MWh (Energy & Ancillary Services)*

2005 Annual Average \$93.83/MWh

November 2005 YTD Average \$92.45/MWh

November 2006 YTD Average \$77.24/MWh



* Excludes ICAP payments.

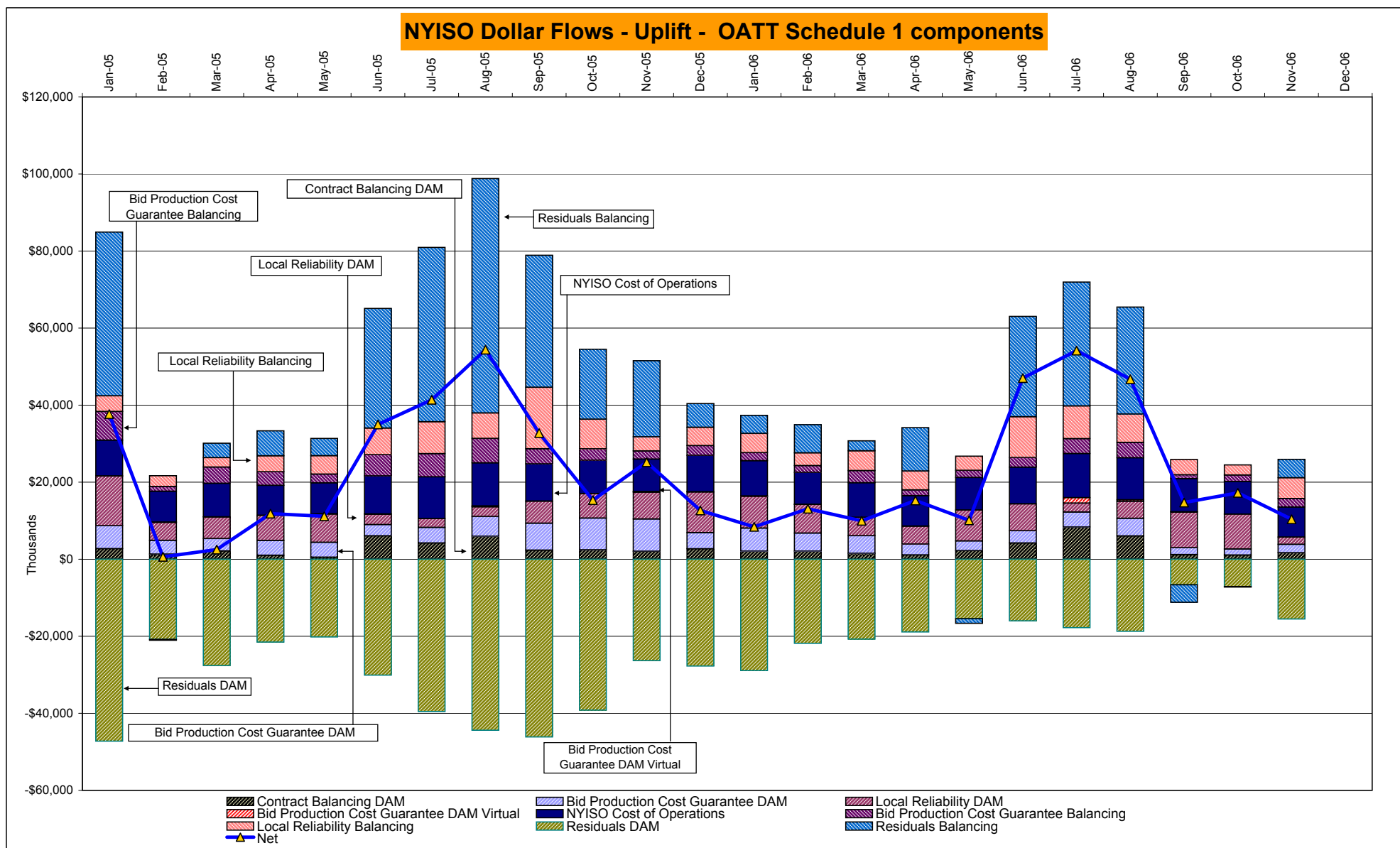
NYISO Average Cost/MWh (Energy and Ancillary Services) *
from the LBMP Customer point of view

2006	<u>January</u>	<u>February</u>	<u>March</u>	<u>April</u>	<u>May</u>	<u>June</u>	<u>July</u>	<u>August</u>	<u>September</u>	<u>October</u>	<u>November</u>	<u>December</u>
LBMP	77.13	71.86	66.52	66.24	65.54	71.94	93.41	101.33	51.89	57.60	68.51	
NTAC	0.46	0.90	0.43	0.54	0.64	0.69	0.47	0.39	0.33	0.38	0.42	
Reserve	0.35	0.30	0.29	0.35	0.16	0.22	0.30	0.13	0.29	0.29	0.46	
Regulation	0.56	0.68	0.69	0.47	0.42	0.39	0.30	0.28	0.41	0.43	0.49	
NYISO Cost of Operations	0.64	0.64	0.64	0.64	0.64	0.64	0.64	0.64	0.64	0.64	0.64	
Uplift	(0.06)	0.37	0.09	0.63	0.12	2.63	2.42	2.28	0.46	0.68	0.22	
Voltage Support and Black Start	0.36	0.36	0.36	0.36	0.36	0.36	0.36	0.36	0.36	0.36	0.36	
Avg Monthly Cost	79.46	75.11	69.03	69.24	67.88	76.87	97.90	105.42	54.38	60.38	71.11	
 Avg YTD Cost	79.46	77.40	74.49	73.24	72.19	73.07	77.90	82.11	79.45	77.72	77.24	

2005	<u>January</u>	<u>February</u>	<u>March</u>	<u>April</u>	<u>May</u>	<u>June</u>	<u>July</u>	<u>August</u>	<u>September</u>	<u>October</u>	<u>November</u>	<u>December</u>
LBMP	75.70	64.04	69.94	71.28	63.13	84.85	92.41	115.19	122.46	118.59	82.01	106.12
NTAC	0.42	0.35	0.23	0.48	0.39	0.58	0.46	0.25	0.10	0.03	0.39	0.64
Reserve	0.25	0.08	0.17	0.21	0.20	(0.01)	0.11	0.02	0.31	0.54	0.34	0.38
Regulation	0.32	0.38	0.34	0.22	0.25	0.20	0.15	0.06	0.41	0.64	0.70	0.53
NYISO Cost of Operations	0.63	0.63	0.63	0.63	0.63	0.63	0.63	0.63	0.63	0.63	0.63	0.63
Uplift	1.99	(0.57)	(0.45)	0.35	0.26	1.76	1.92	2.54	1.57	0.50	1.27	0.20
Voltage Support and Black Start	0.39	0.39	0.39	0.39	0.39	0.39	0.39	0.39	0.39	0.39	0.39	0.39
Avg Monthly Cost	79.71	65.30	71.25	73.56	65.26	88.41	96.06	119.07	125.87	121.32	85.74	108.89
 Avg YTD Cost	79.71	73.20	72.53	72.77	71.45	74.81	78.81	85.42	90.22	93.02	92.45	93.83

* Excludes ICAP payments.

These numbers reflect the rebilling of prior periods.



DAM Contract Balancing amounts are for payments made to generating units to make them whole for being dispatched below their Day-Ahead schedule, as a result of out-of-merit dispatches.
DAM Bid Production Cost Guarantees for Virtual Transactions are included in the chart and are shown from the inception of Virtual Transactions. These values are small and cannot be identified on the chart.
DAM residuals are revenue charged or returned to customers due to the under or over collection of funds.

NYISO Markets Transactions

2006	January	February	March	April	May	June	July	August	September	October	November	December
Day Ahead Market MWh	13,877,416	12,532,754	13,392,627	11,860,369	12,637,299	14,251,897	17,302,066	16,604,505	13,110,510	12,648,358	11,952,339	
DAM LSE Internal LBMP Energy Sales	46%	47%	48%	50%	46%	48%	51%	50%	46%	47%	44%	
DAM External TC LBMP Energy Sales	4%	3%	2%	2%	3%	3%	5%	5%	3%	3%	4%	
DAM Bilateral - Internal Bilaterals	47%	47%	45%	45%	47%	45%	41%	42%	48%	47%	49%	
DAM Bilateral - Import/Non-LBMP Market Bilaterals	2%	2%	2%	2%	2%	2%	1%	2%	2%	2%	2%	
DAM Bilateral - Export/Non-LBMP Market Bilaterals	1%	1%	2%	1%	1%	1%	2%	1%	1%	1%	1%	
DAM Bilateral - Wheel Through Bilaterals	0%	0%	0%	0%	0%	0%	0%	0%	0%	0%	0%	
Balancing Energy Market MWh	299,347	312,712	555,364	396,752	486,039	559,821	471,866	339,367	233,201	512,098	160,321	
Balancing Energy LSE Internal LBMP Energy Sales	2%	20%	31%	26%	45%	32%	49%	38%	-16%	51%	-45%	
Balancing Energy External TC LBMP Energy Sales	87%	76%	66%	68%	48%	60%	62%	63%	89%	45%	133%	
Balancing Energy Bilateral - Internal Bilaterals	5%	2%	2%	2%	2%	5%	1%	2%	-1%	1%	11%	
Balancing Energy Bilateral - Import/Non-LBMP Market Bilaterals	2%	1%	0%	0%	3%	0%	0%	0%	3%	0%	0%	
Balancing Energy Bilateral - Export/Non-LBMP Market Bilaterals	1%	1%	1%	1%	0%	0%	-12%	1%	1%	1%	1%	
Balancing Energy Bilateral - Wheel Through Bilaterals	4%	1%	0%	3%	2%	3%	0%	-3%	24%	2%	-1%	
Transactions Summary												
LBMP	51%	50%	52%	53%	51%	53%	57%	56%	49%	52%	48%	
Internal Bilaterals	46%	46%	43%	43%	45%	44%	40%	42%	47%	45%	48%	
Import Bilaterals	2%	2%	2%	2%	2%	2%	1%	1%	2%	2%	2%	
Export Bilaterals	1%	1%	2%	1%	1%	1%	1%	1%	1%	1%	1%	
Wheels Through	0%	0%	0%	0%	0%	0%	0%	0%	0%	0%	0%	
Market Share of Total Load												
Day Ahead Market	97.9%	97.6%	96.0%	96.8%	96.3%	96.2%	97.3%	98.0%	98.3%	96.1%	98.7%	
Balancing Energy +	2.1%	2.4%	4.0%	3.2%	3.7%	3.8%	2.7%	2.0%	1.7%	3.9%	1.3%	
Total MWh	14,176,763	12,845,466	13,947,991	12,257,122	13,123,339	14,811,719	17,773,932	16,943,872	13,343,711	13,160,456	12,112,661	
Average Daily Energy Sendout/Month GWh	439	444	428	395	407	471	528	518	430	409	414	
2005	January	February	March	April	May	June	July	August	September	October	November	December
Day Ahead Market MWh	14,281,481	12,510,148	13,410,579	12,215,628	12,773,478	14,981,363	16,344,465	16,587,663	14,706,243	13,309,658	12,893,992	14,418,648
DAM LSE Internal LBMP Energy Sales	48%	49%	52%	52%	45%	50%	53%	52%	49%	46%	45%	46%
DAM External TC LBMP Energy Sales	3%	1%	1%	1%	3%	3%	3%	4%	6%	4%	4%	5%
DAM Bilateral - Internal Bilaterals	47%	48%	45%	44%	50%	44%	42%	42%	43%	47%	48%	46%
DAM Bilateral - Import/Non-LBMP Market Bilaterals	1%	1%	1%	0%	0%	1%	1%	1%	2%	2%	2%	2%
DAM Bilateral - Export/Non-LBMP Market Bilaterals	1%	1%	1%	1%	2%	1%	1%	1%	1%	1%	1%	1%
DAM Bilateral - Wheel Through Bilaterals	1%	0%	1%	0%	0%	1%	0%	0%	0%	0%	0%	0%
Balancing Energy Market MWh	414,096	112,878	329,063	43,729	-101,266	589,757	798,279	1,108,556	554,021	378,592	359,195	509,212
Balancing Energy LSE Internal LBMP Energy Sales	77%	-52%	22%	-480%	-307%	47%	73%	73%	34%	2%	-18%	40%
Balancing Energy External TC LBMP Energy Sales	43%	176%	77%	616%	208%	44%	23%	21%	50%	94%	102%	50%
Balancing Energy Bilateral - Internal Bilaterals	-13%	-10%	7%	-36%	5%	5%	6%	6%	13%	4%	13%	11%
Balancing Energy Bilateral - Import/Non-LBMP Market Bilaterals	0%	0%	0%	0%	0%	0%	0%	0%	0%	0%	0%	0%
Balancing Energy Bilateral - Export/Non-LBMP Market Bilaterals	1%	0%	0%	3%	2%	1%	1%	0%	0%	1%	1%	1%
Balancing Energy Bilateral - Wheel Through Bilaterals	-8%	-14%	-5%	-2%	-8%	3%	-2%	1%	3%	-1%	2%	-1%
Transactions Summary												
LBMP	53%	51%	54%	54%	47%	54%	58%	58%	56%	52%	50%	52%
Internal Bilaterals	45%	47%	44%	44%	50%	43%	40%	39%	42%	45%	47%	45%
Import Bilaterals	1%	1%	1%	0%	0%	1%	1%	1%	1%	2%	2%	2%
Export Bilaterals	1%	1%	1%	1%	2%	1%	1%	1%	1%	1%	1%	1%
Wheels Through	0%	0%	0%	0%	0%	1%	0%	0%	0%	0%	0%	0%
Market Share of Total Load												
Day Ahead Market	97.2%	99.1%	97.6%	99.6%	100.8%	96.2%	95.3%	93.7%	96.4%	97.2%	97.3%	96.6%
Balancing Energy +	2.8%	0.9%	2.4%	0.4%	-0.8% *	3.8%	4.7%	6.3%	3.6%	2.8%	2.7%	3.4%
Total MWh	14,695,577	12,623,025	13,739,642	12,259,357	12,672,212	15,571,120	17,142,744	17,696,220	15,260,264	13,688,250	13,253,187	14,927,859
Average Daily Energy Sendout/Month GWh	462	447	433	399	395	501	536	549	478	418	419	454

+ Balancing Energy: Load(MW) purchased at Real Time LBMP.

* The signs for the detail section intuitively reflect the direction of power flow eliminating the use of double negatives when Balancing Energy is negative.

Notes: Percent totals may not equal 100% due to rounding.

Virtual Transactions are not reflected in this chart.

NYISO Markets 2006 Energy Statistics

	<u>January</u>	<u>February</u>	<u>March</u>	<u>April</u>	<u>May</u>	<u>June</u>	<u>July</u>	<u>August</u>	<u>September</u>	<u>October</u>	<u>November</u>	<u>December</u>
<u>DAY AHEAD LBMP</u>												
Price *	\$73.28	\$68.90	\$64.31	\$63.21	\$59.31	\$64.40	\$83.27	\$88.13	\$48.97	\$53.46	\$63.57	
Standard Deviation	\$15.03	\$12.95	\$11.95	\$13.28	\$13.70	\$22.66	\$40.24	\$50.58	\$12.19	\$16.54	\$18.76	
Load Weighted Price **	\$75.09	\$70.34	\$65.74	\$64.93	\$61.29	\$68.02	\$89.27	\$95.39	\$50.76	\$55.39	\$65.85	
<u>RTC *** LBMP</u>												
Price *	\$70.25	\$63.41	\$63.04	\$62.39	\$60.81	\$61.60	\$77.27	\$91.21	\$47.92	\$56.36	\$62.62	
Standard Deviation	\$26.63	\$15.86	\$20.50	\$18.82	\$37.26	\$39.82	\$56.30	\$107.73	\$16.64	\$33.37	\$31.79	
Load Weighted Price **	\$71.94	\$64.44	\$64.43	\$63.93	\$63.75	\$65.15	\$83.30	\$101.89	\$49.51	\$58.87	\$65.05	
<u>REAL TIME LBMP</u>												
Price *	\$70.91	\$63.96	\$63.66	\$62.35	\$63.29	\$61.23	\$78.58	\$89.95	\$47.09	\$54.66	\$60.57	
Standard Deviation	\$31.34	\$20.06	\$23.01	\$20.98	\$62.40	\$52.63	\$66.83	\$97.29	\$17.93	\$27.32	\$28.38	
Load Weighted Price **	\$73.18	\$65.38	\$65.38	\$64.13	\$68.66	\$66.47	\$86.37	\$102.03	\$48.95	\$57.21	\$63.07	
Average Daily Energy Sendout/Month GWh	439	444	428	395	407	471	528	518	430	409	414	

NYISO Markets 2005 Energy Statistics

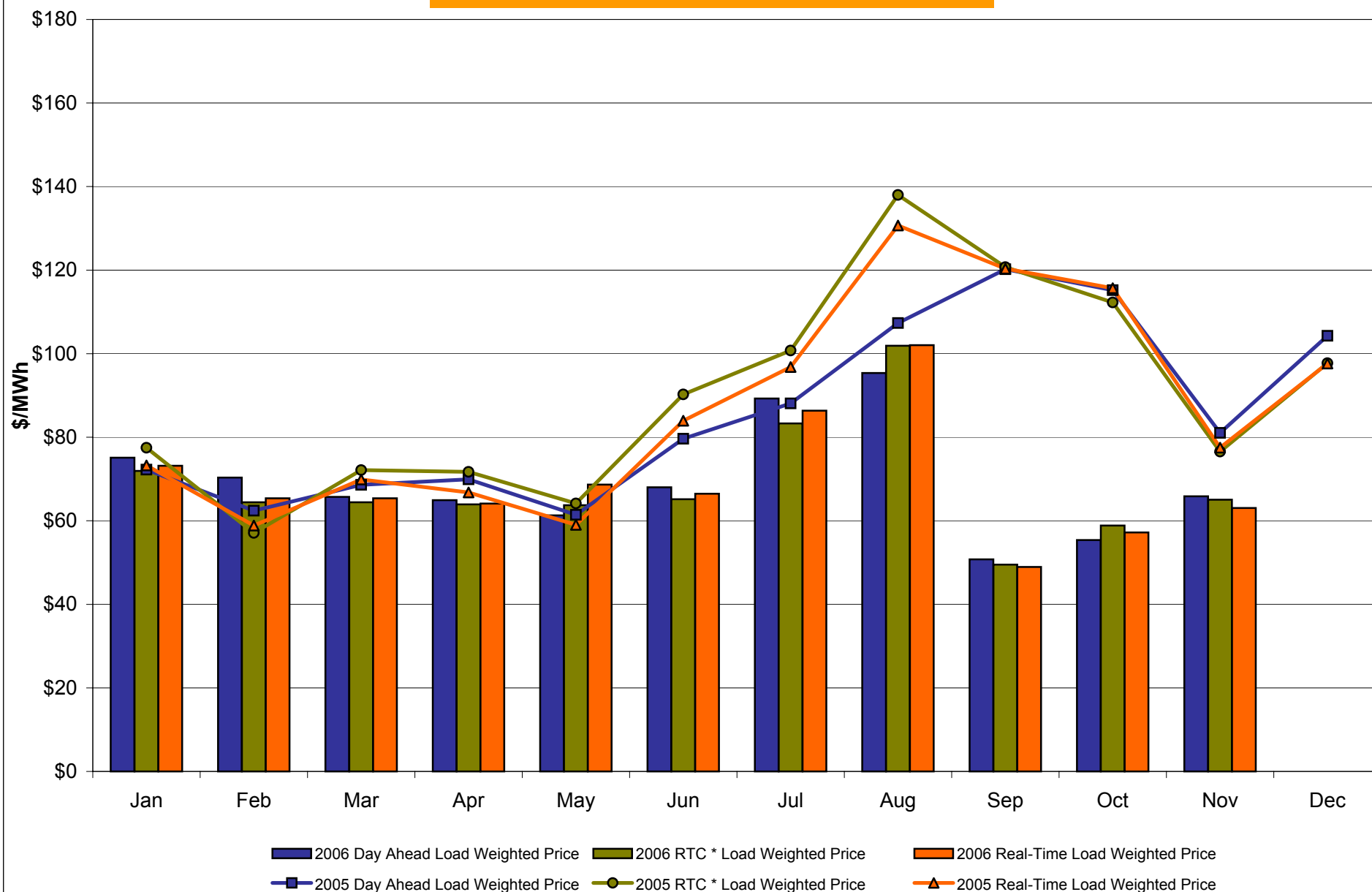
	<u>January</u>	<u>February</u>	<u>March</u>	<u>April</u>	<u>May</u>	<u>June</u>	<u>July</u>	<u>August</u>	<u>September</u>	<u>October</u>	<u>November</u>	<u>December</u>
<u>DAY AHEAD LBMP</u>												
Price *	\$69.55	\$61.04	\$67.17	\$68.14	\$59.59	\$75.49	\$83.75	\$102.33	\$115.47	\$110.99	\$78.56	\$101.24
Standard Deviation	\$23.42	\$12.00	\$12.49	\$14.20	\$13.39	\$22.85	\$24.32	\$31.65	\$32.31	\$28.39	\$21.07	\$26.32
Load Weighted Price **	\$72.26	\$62.42	\$68.61	\$69.92	\$61.44	\$79.64	\$88.09	\$107.34	\$120.22	\$115.20	\$81.05	\$104.27
<u>RTC *** LBMP</u>												
Price *	\$74.47	\$55.93	\$70.40	\$69.92	\$61.59	\$85.42	\$94.96	\$129.60	\$116.00	\$108.53	\$74.02	\$94.86
Standard Deviation	\$44.64	\$16.80	\$26.13	\$23.51	\$59.20	\$62.91	\$68.35	\$116.09	\$44.35	\$42.95	\$33.43	\$40.18
Load Weighted Price **	\$77.48	\$57.10	\$72.12	\$71.72	\$64.16	\$90.25	\$100.76	\$138.00	\$120.72	\$112.25	\$76.57	\$97.73
<u>REAL TIME LBMP</u>												
Price *	\$70.25	\$57.57	\$68.04	\$64.95	\$57.20	\$77.75	\$90.48	\$122.21	\$114.94	\$110.90	\$74.62	\$94.16
Standard Deviation	\$31.79	\$20.48	\$32.50	\$26.06	\$42.34	\$55.70	\$72.95	\$103.00	\$42.92	\$55.35	\$36.61	\$40.67
Load Weighted Price **	\$73.26	\$58.86	\$69.88	\$66.77	\$59.04	\$83.96	\$96.82	\$130.69	\$120.36	\$115.69	\$77.51	\$97.64
Average Daily Energy Sendout/Month GWh	462	447	433	399	395	501	536	549	478	418	419	454

* Average zonal load weighted prices.

** Average zonal load weighted prices, load weighted in each hour.

*** Referred to as RTC beginning February 2005. Prior to February 2005 known as BME or Hour Ahead Market (HAM).

NYISO Monthly Average Internal LBMPs 2005 - 2006



* Referred to as RTC beginning February 2005.
Prior to February 2005 known as BME or Hour Ahead Market (HAM).

November 2006 Zonal LBMP Statistics for NYISO (\$/MWh)

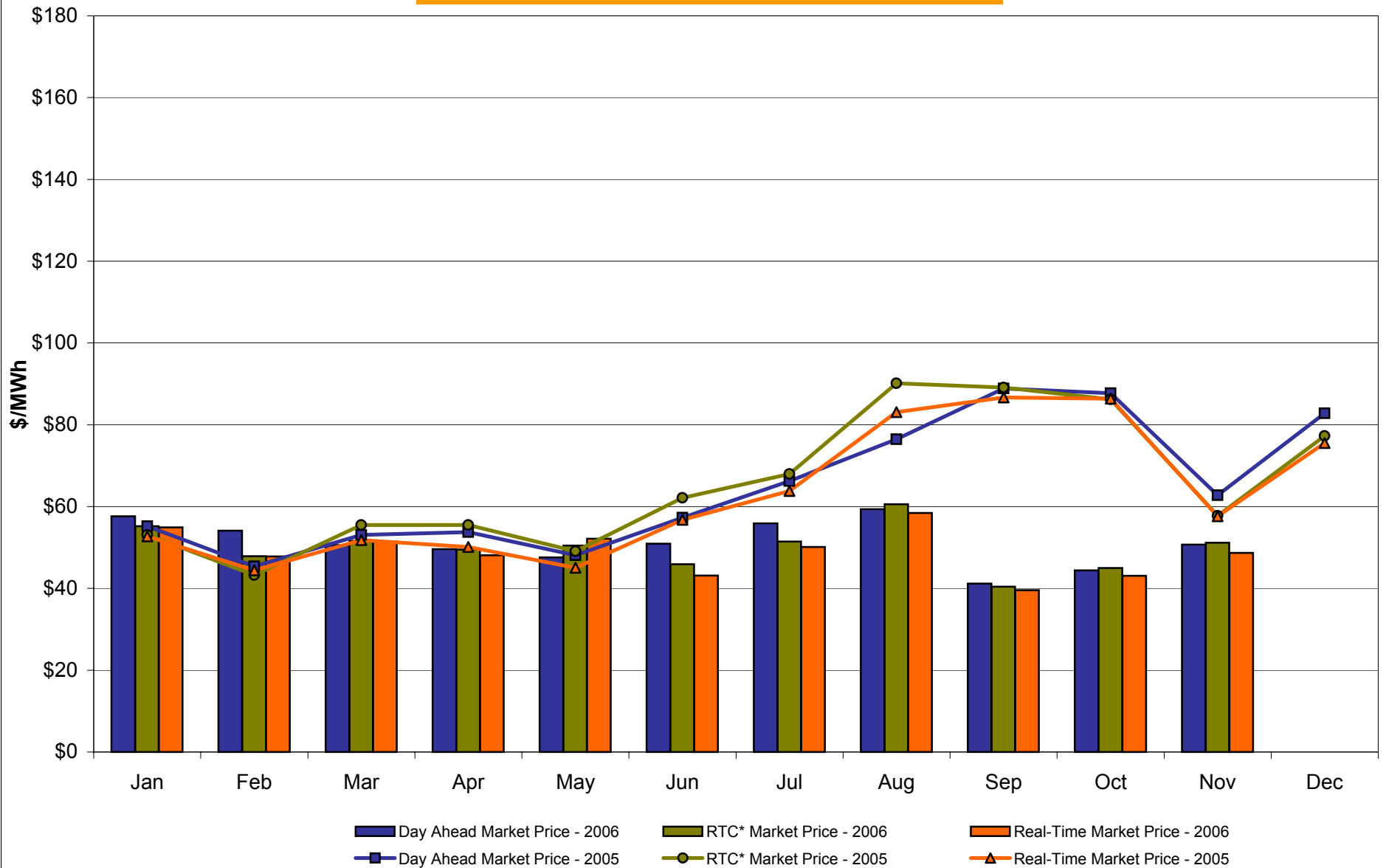
	WEST Zone A	GENESEE Zone B	NORTH Zone D	CENTRAL Zone C	MOHAWK VALLEY Zone E	CAPITAL Zone F	HUDSON VALLEY Zone G	MILLWOOD Zone H	DUNWOODIE Zone I	NEW YORK CITY Zone J	LONG ISLAND Zone K
DAY AHEAD LBMP											
Unweighted Price *	50.72	53.51	55.77	55.16	56.93	62.92	63.66	64.05	64.14	67.56	78.67
Standard Deviation	15.36	16.54	17.23	17.10	17.68	18.65	19.01	19.18	19.19	20.99	21.83
RTC** LBMP											
Unweighted Price *	51.16	53.55	54.61	54.73	55.91	62.70	62.88	63.20	63.20	66.30	76.33
Standard Deviation	29.69	31.12	31.64	31.42	32.26	32.15	32.90	33.06	33.03	34.08	32.57
REAL TIME LBMP											
Unweighted Price *	48.71	51.01	51.98	52.11	53.22	60.03	60.10	60.41	60.41	65.12	75.63
Standard Deviation	26.33	27.68	28.19	27.88	28.65	29.41	29.47	29.63	29.60	33.10	31.50
	ONTARIO IESO	HYDRO QUEBEC	PJM	NEW ENGLAND	CROSS SOUND CABLE Controllable Line						
DAY AHEAD LBMP											
Unweighted Price *	50.05	58.19	52.03	63.20	78.49						
Standard Deviation	14.64	15.73	16.29	17.84	21.40						
RTC** LBMP											
Unweighted Price *	46.62	52.89	47.30	58.12	71.11						
Standard Deviation	17.43	113.07	17.58	17.33	21.26						
REAL TIME LBMP											
Unweighted Price *	47.37	51.43	48.13	59.68	74.64						
Standard Deviation	24.44	26.01	24.18	26.77	30.11						

* Straight zonal LBMP averages

** Referred to as RTC beginning February 2005

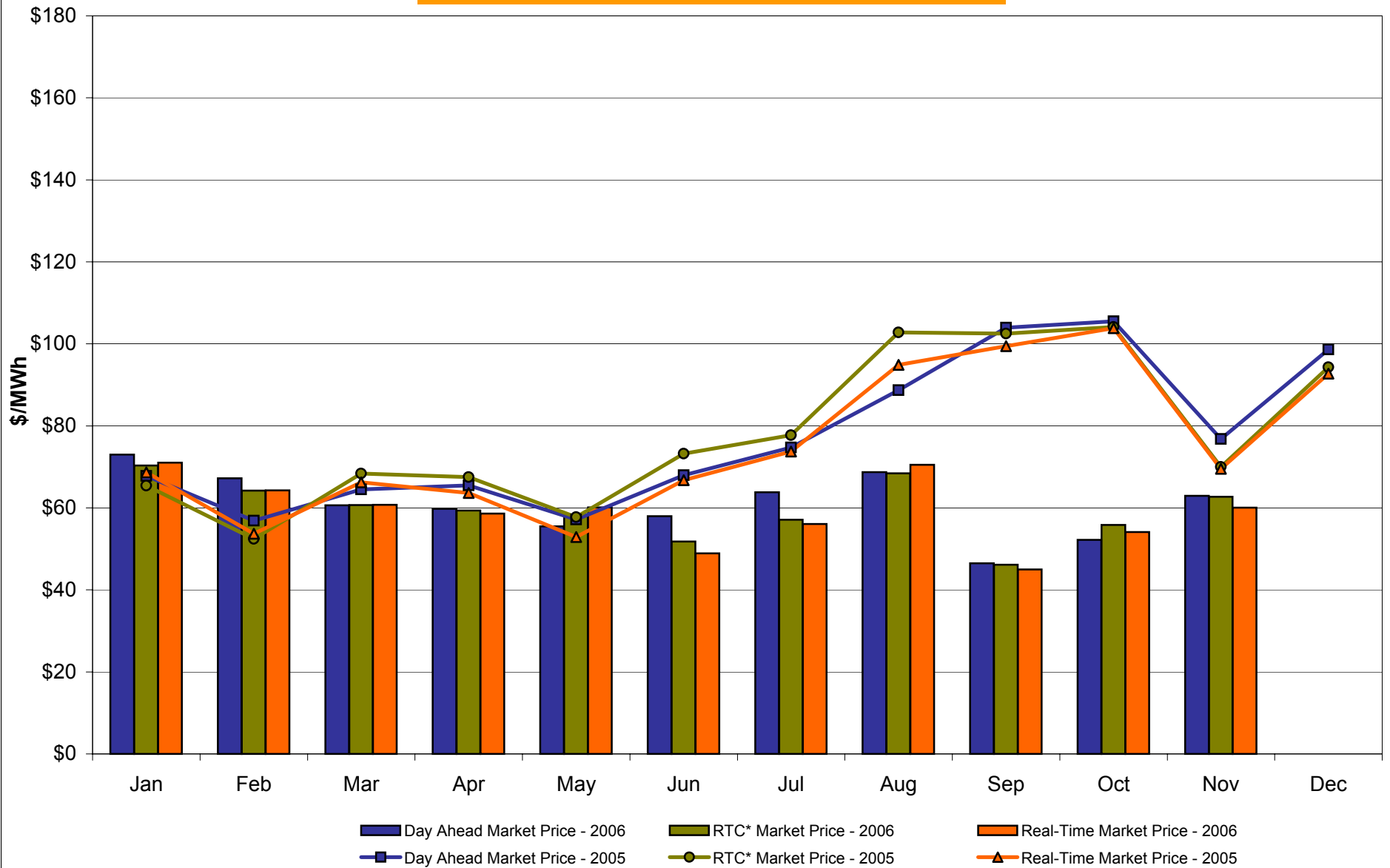
Prior to February 2005 known as BME or Hour Ahead Market (HAM)

West Zone A Monthly Average LBMP Prices 2005 - 2006



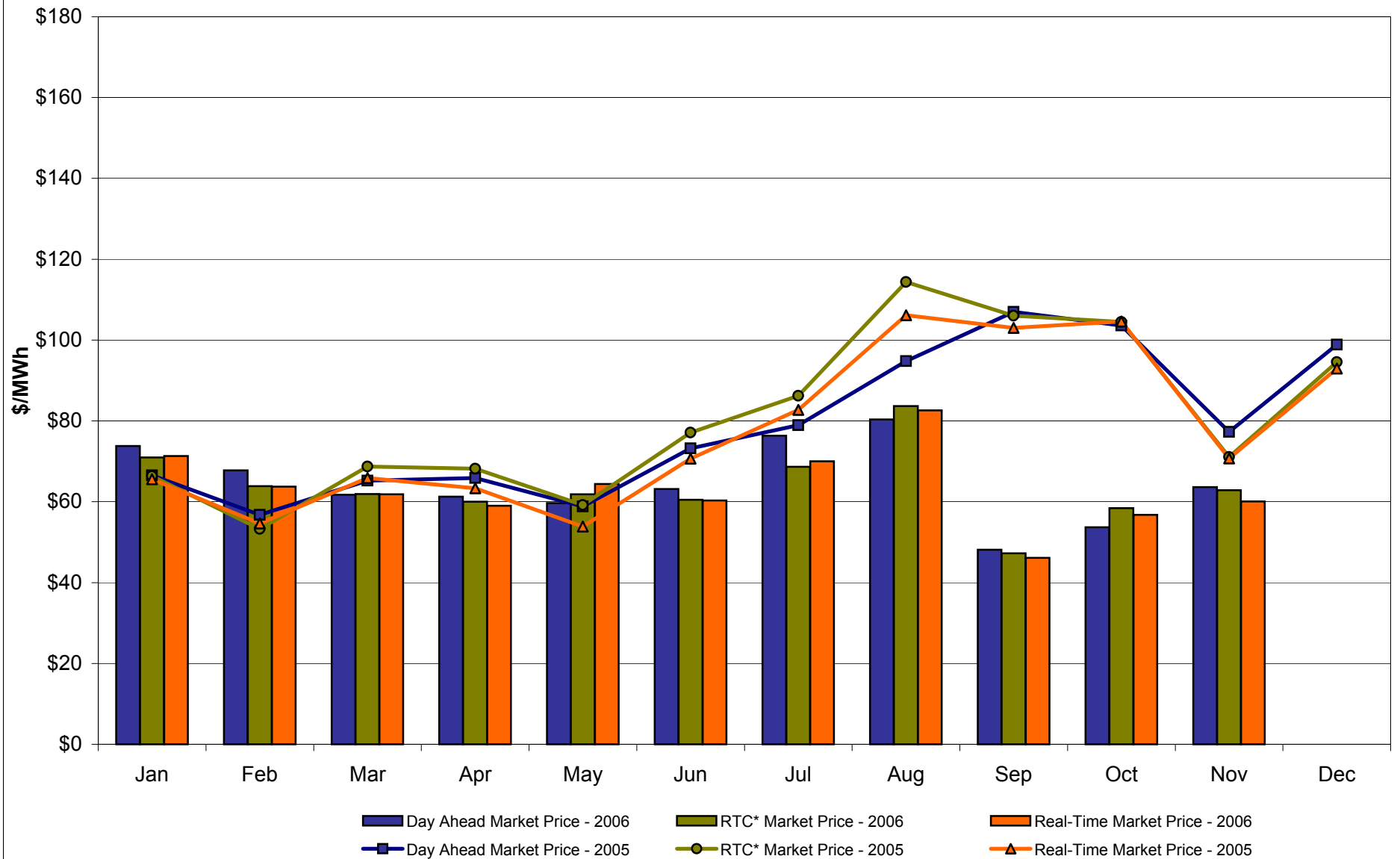
* Referred to as RTC beginning February 2005.
Prior to February 2005 known as BME or Hour Ahead Market (HAM).

Capital Zone F **Monthly Average LBMP Prices 2005 - 2006**



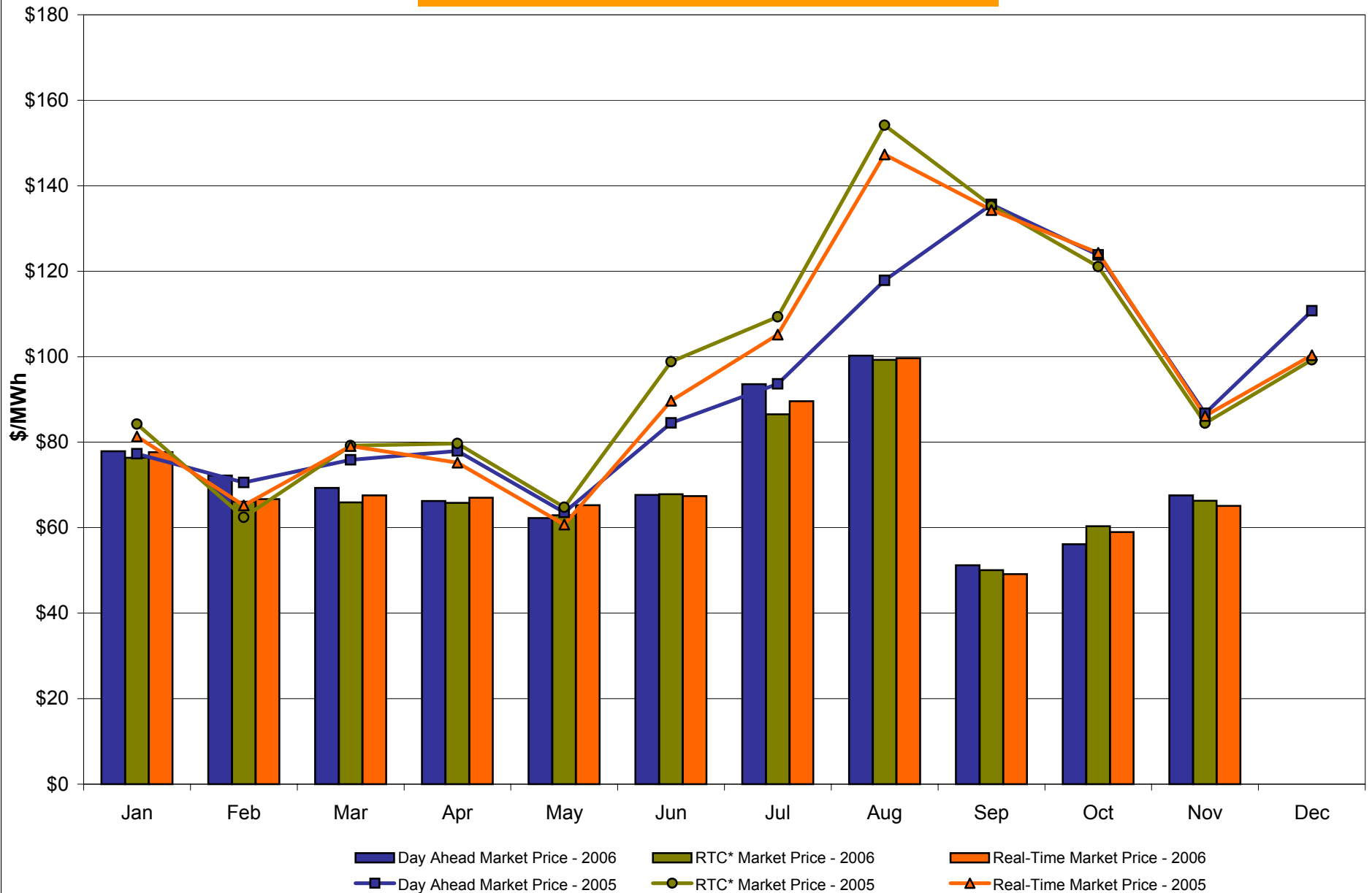
* Referred to as RTC beginning February 2005.
 Prior to February 2005 known as BME or Hour Ahead Market (HAM).

Hudson Valley Zone G Monthly Average LBMP Prices 2005 - 2006



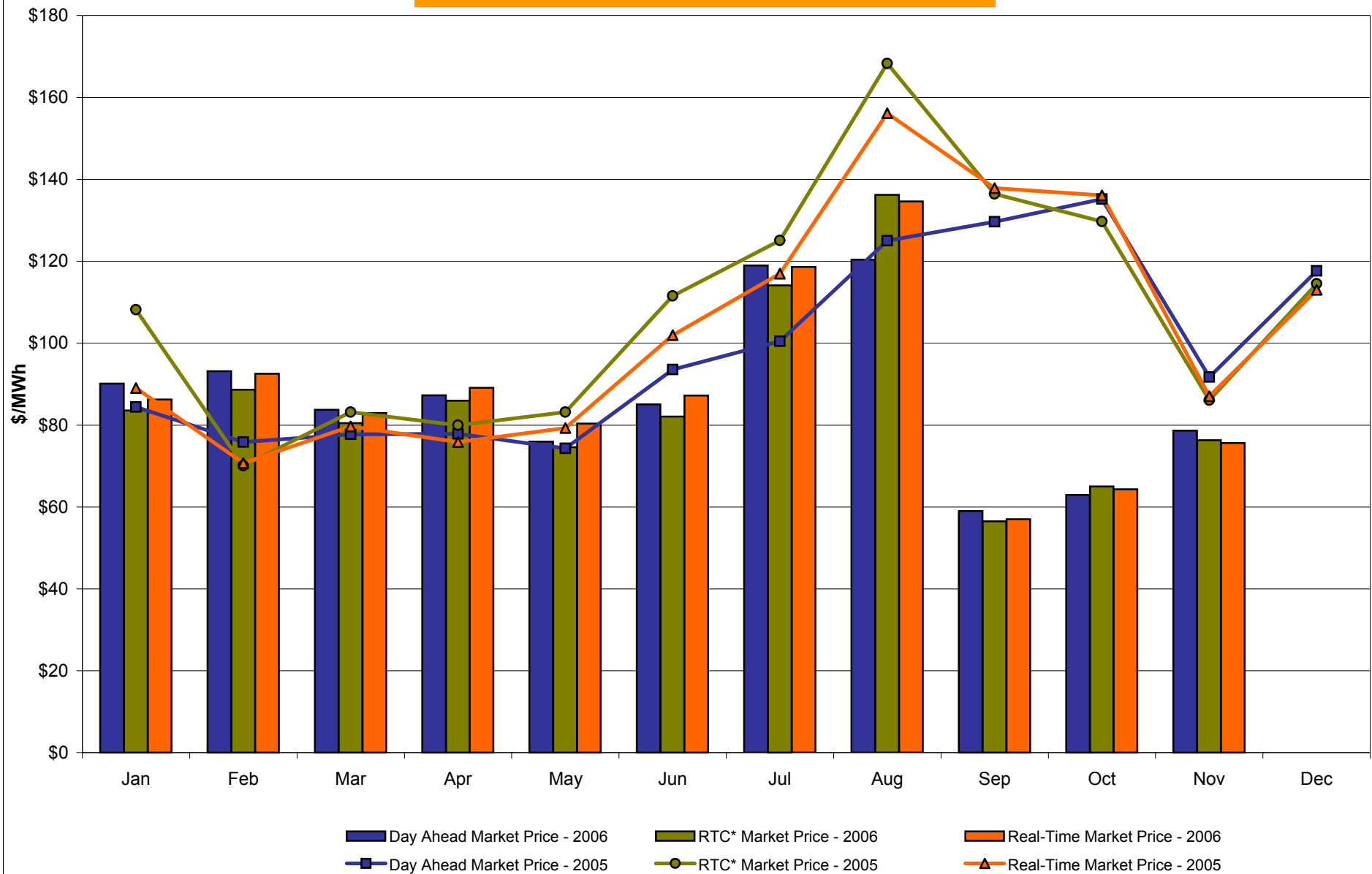
* Referred to as RTC beginning February 2005.
Prior to February 2005 known as BME or Hour Ahead Market (HAM).

NYC Zone J Monthly Average LBMP Prices 2005 - 2006



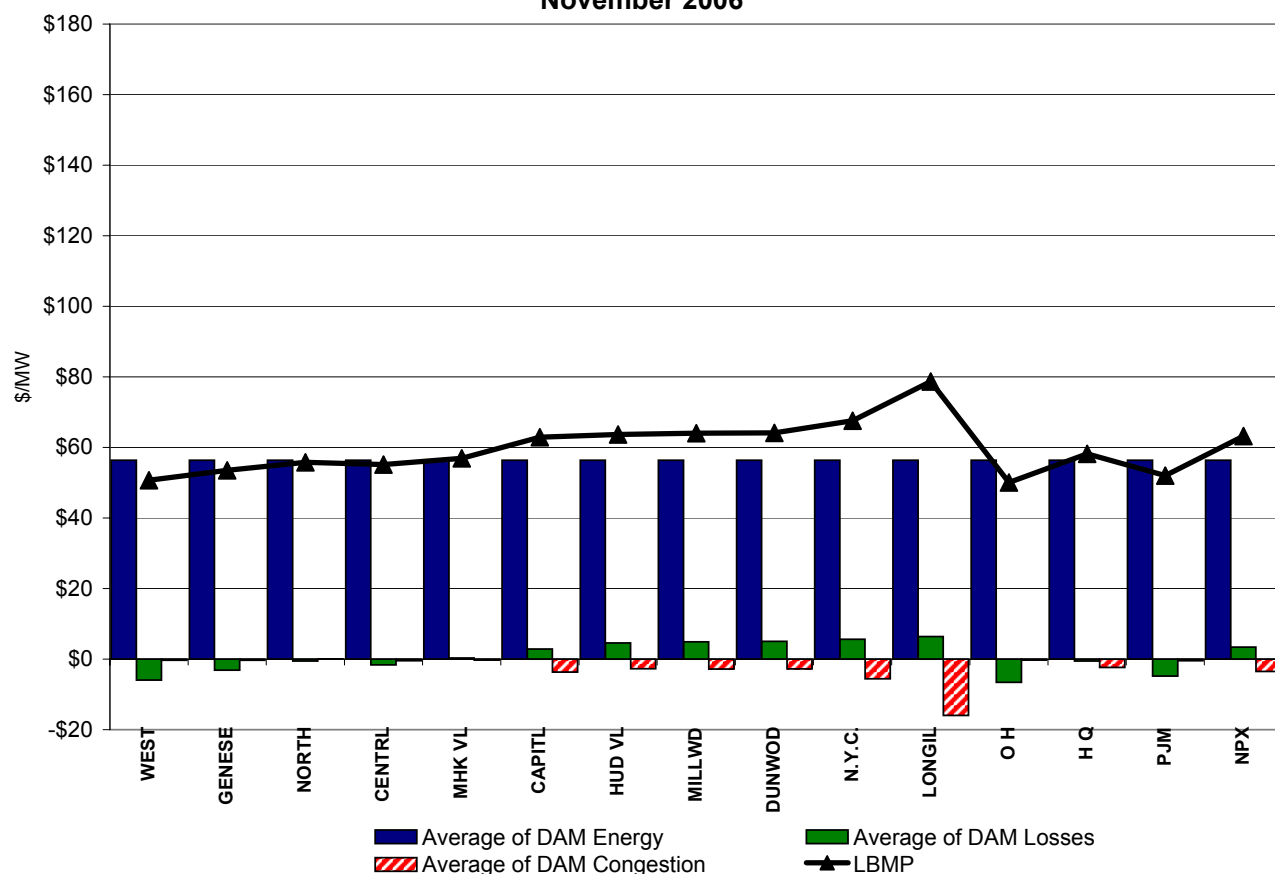
* Referred to as RTC beginning February 2005.
Prior to February 2005 known as BME or Hour Ahead Market (HAM).

Long Island Zone K Monthly Average LBMP Prices 2005 - 2006

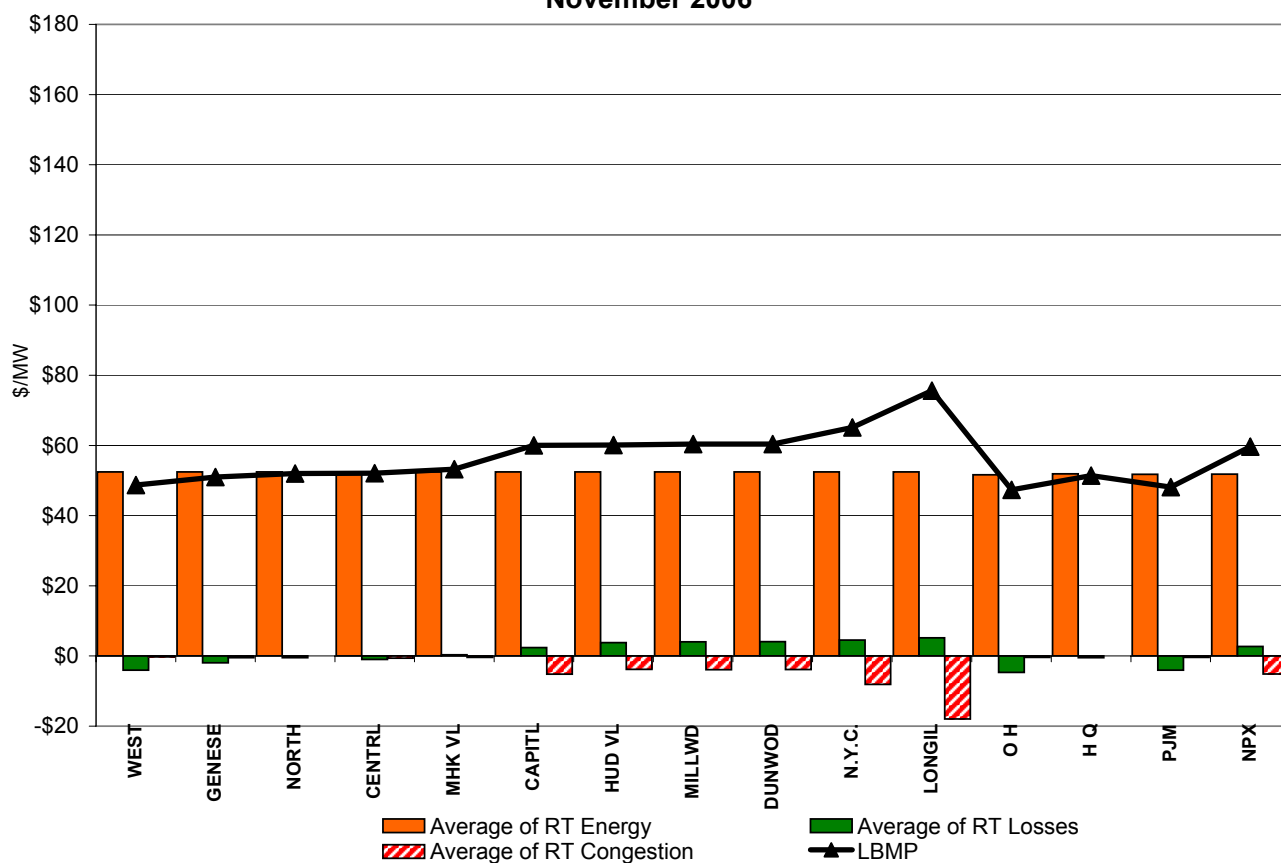


* Referred to as RTC beginning February 2005.
Prior to February 2005 known as BME or Hour Ahead Market (HAM).

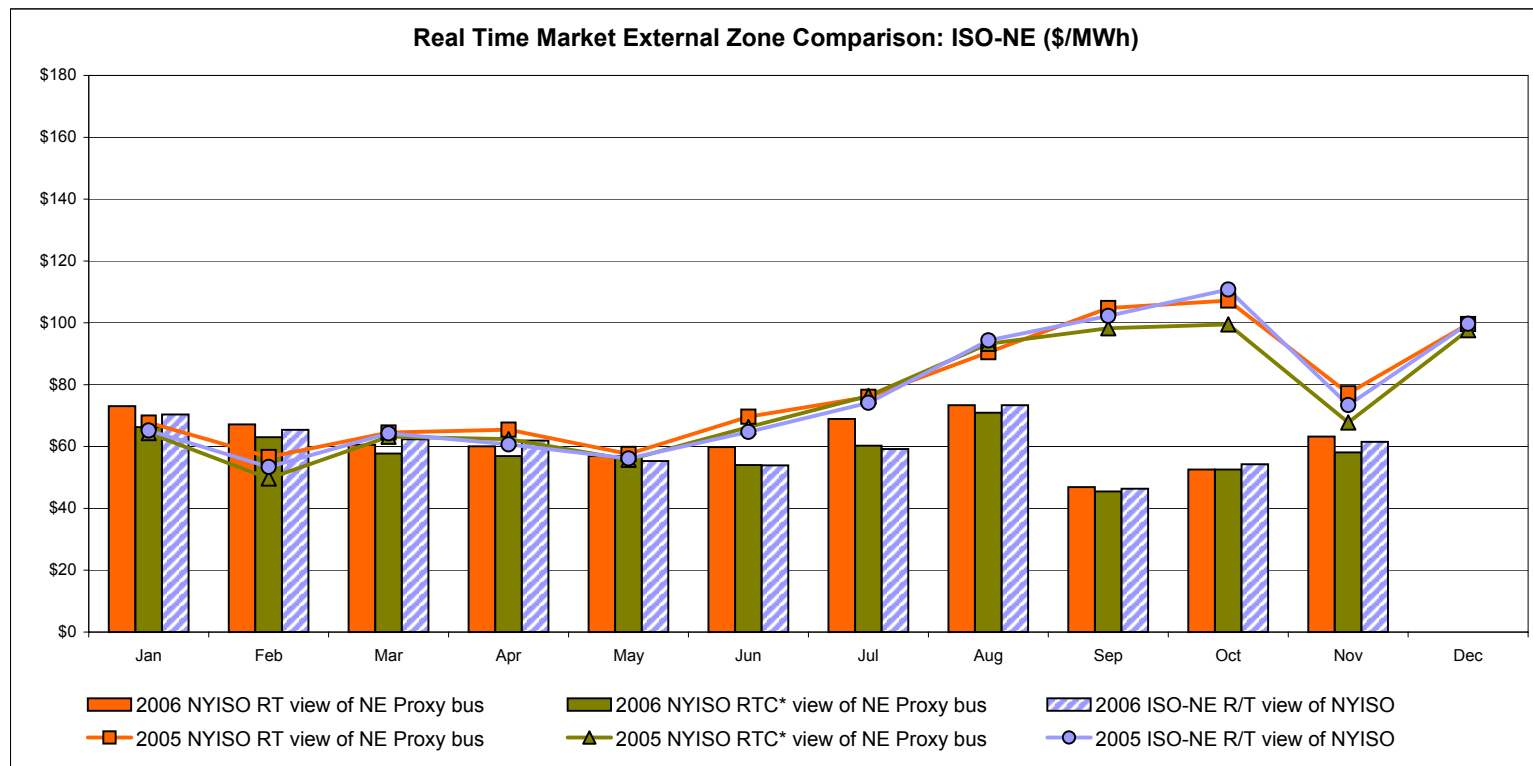
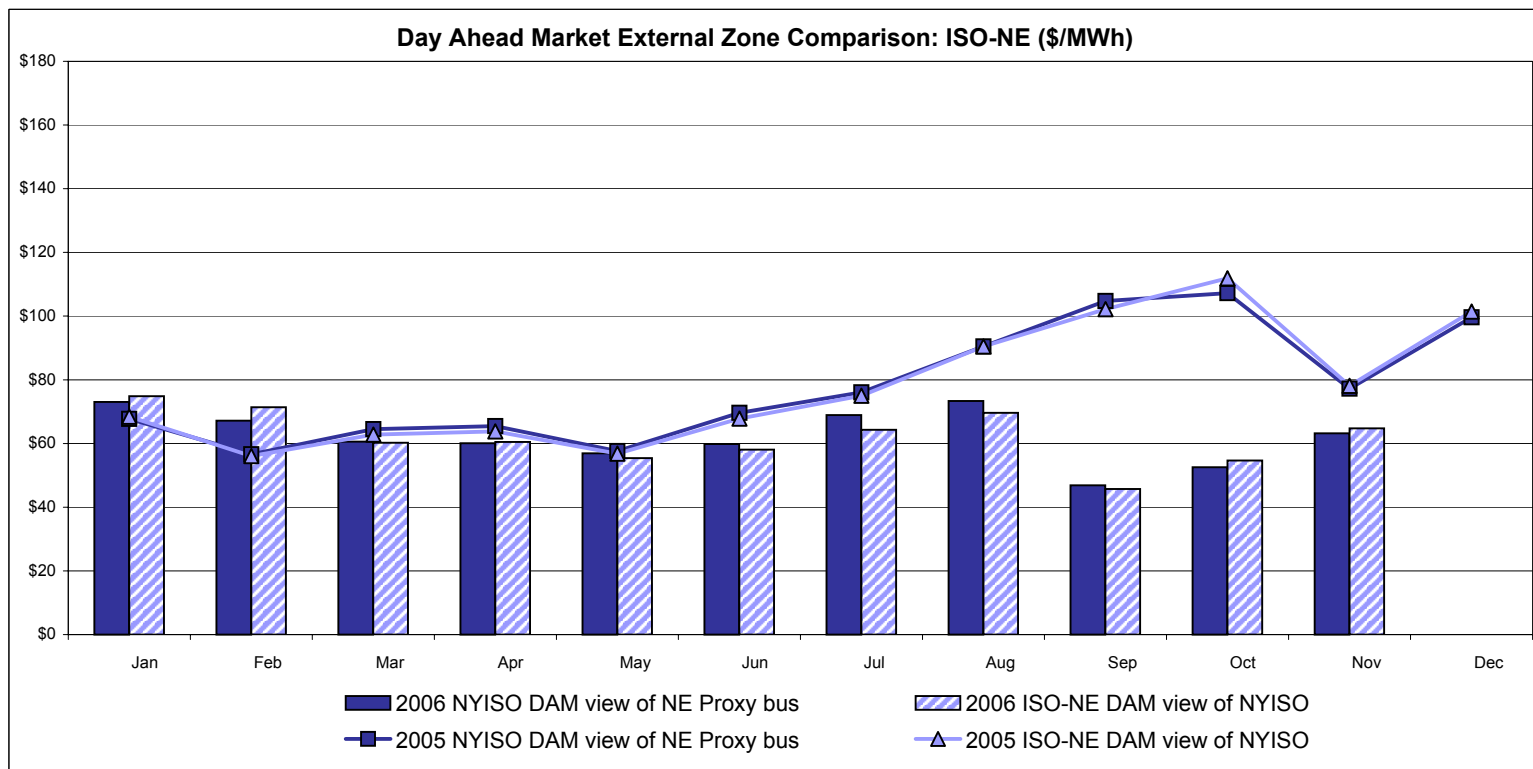
**DAM Zonal Unweighted Monthly Average LBMP Components
November 2006**



**RT Zonal Unweighted Monthly Average LBMP Components
November 2006**



External Comparison ISO-New England



Note:

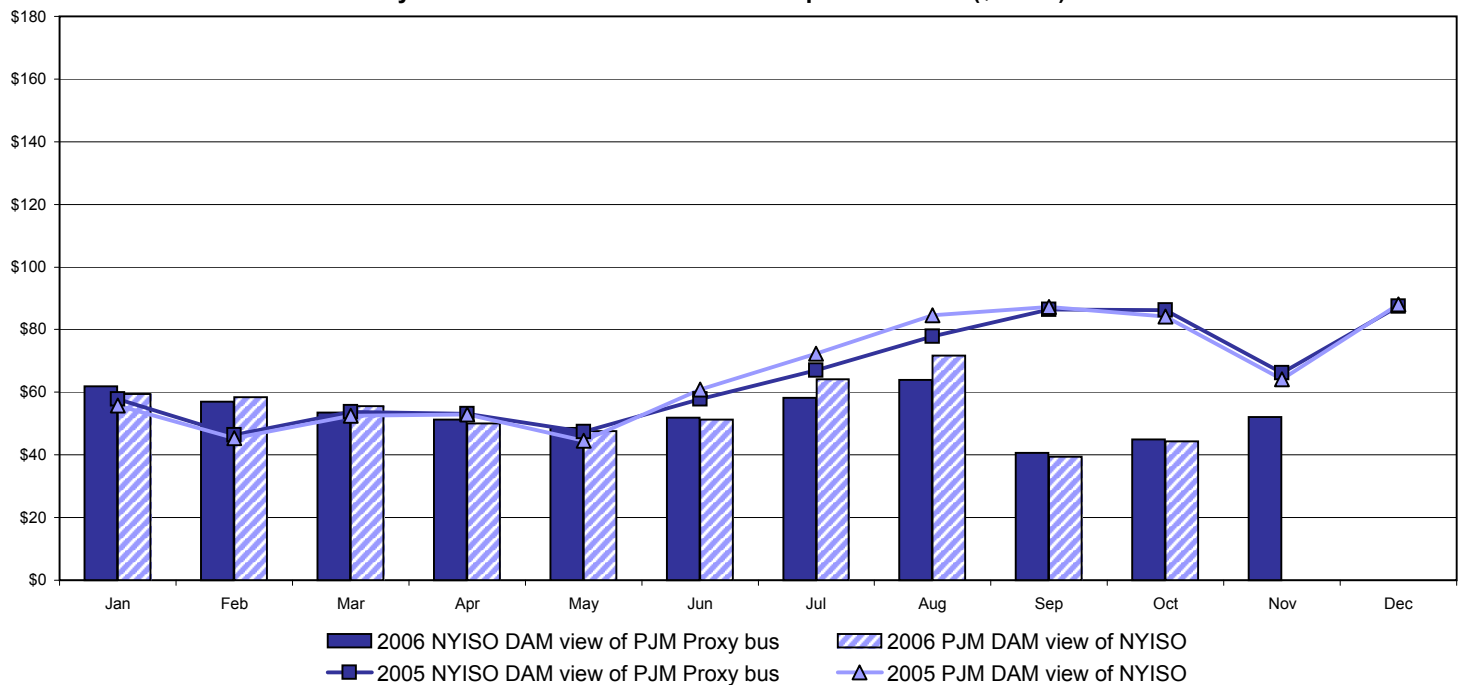
ISO-NE Forecast is an advisory posting @ 18:00 day before.
 The DAM and R/T prices at the Roseton interface are used for ISO-NE.
 The DAM and R/T prices at the SandyPond interface are used for NYISO.

* Referred to as RTC beginning February 2005.

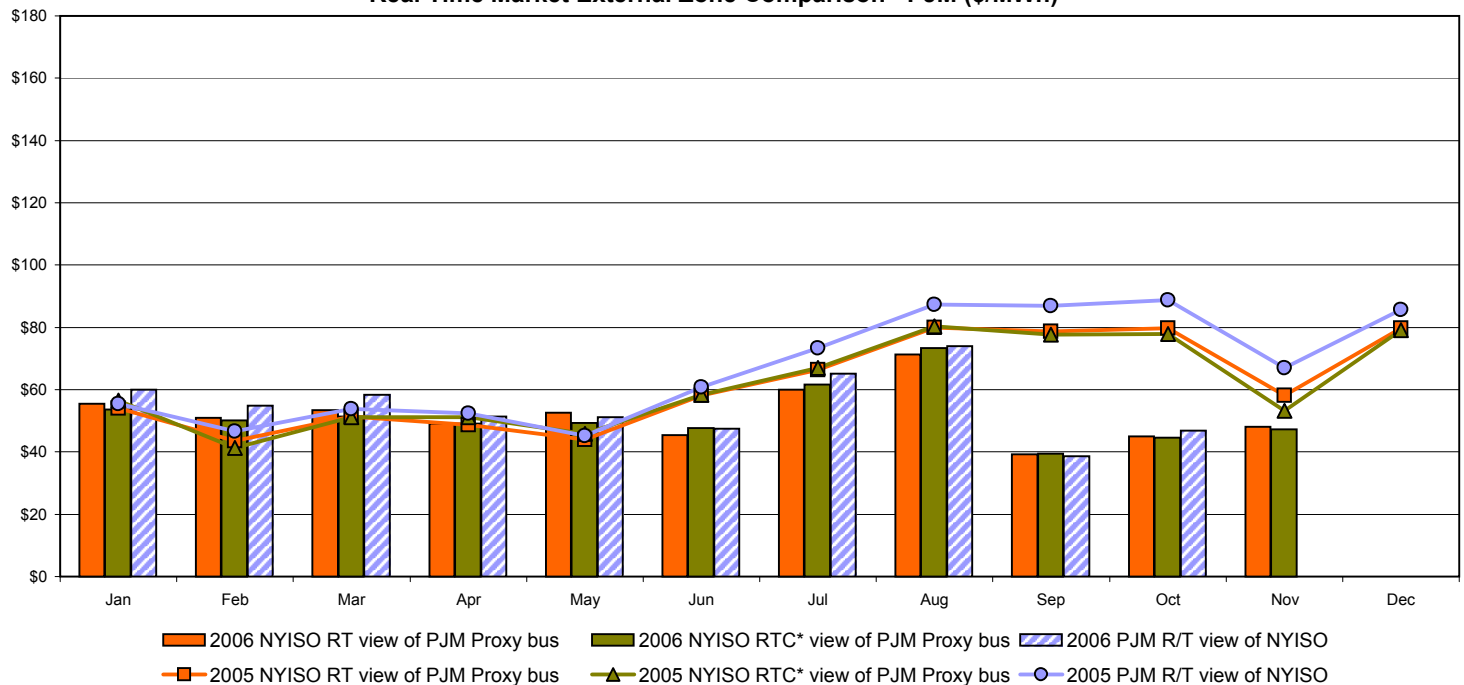
Prior to February 2005 known as BME or Hour Ahead Market (HAM).

External Comparison PJM

Day Ahead Market External Zone Comparison - PJM (\$/MWh)



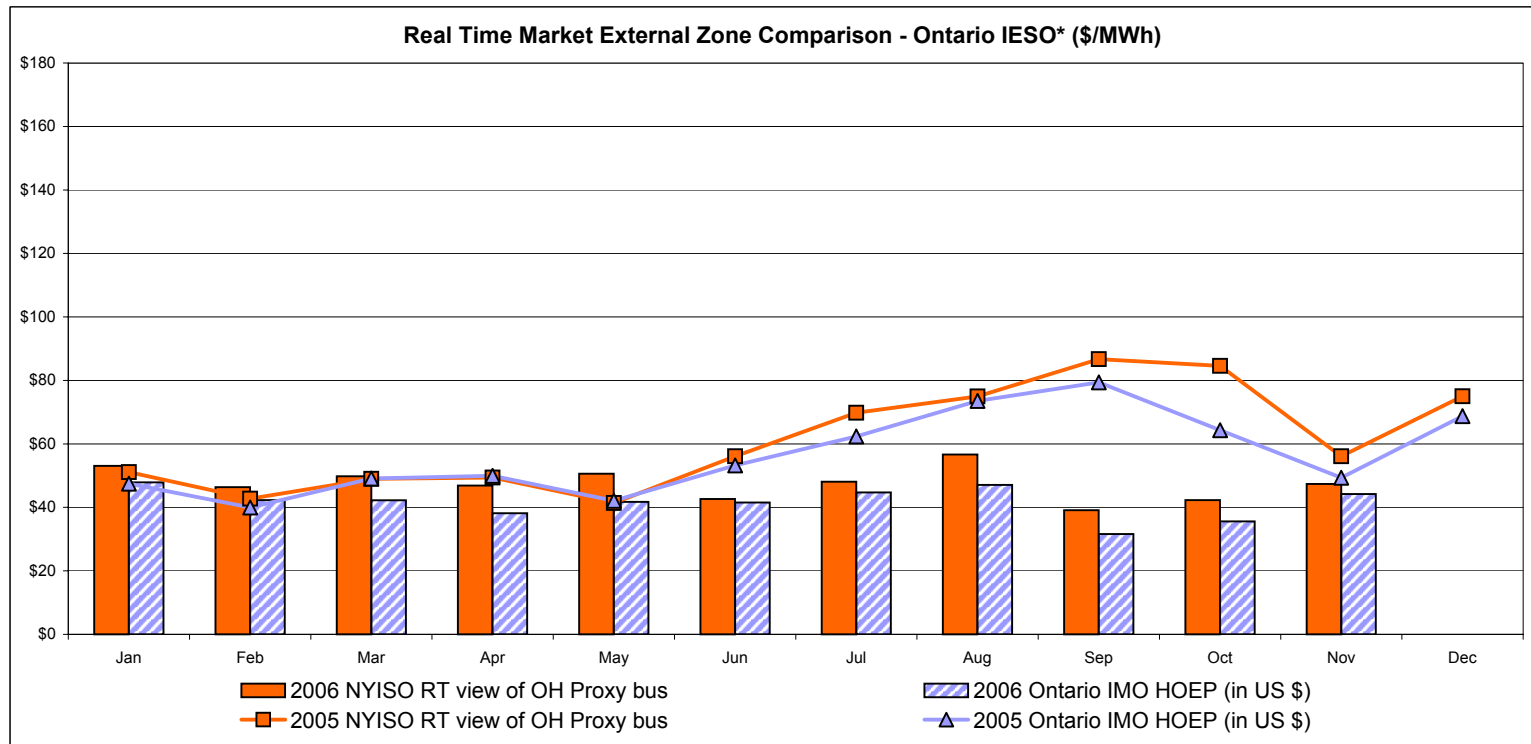
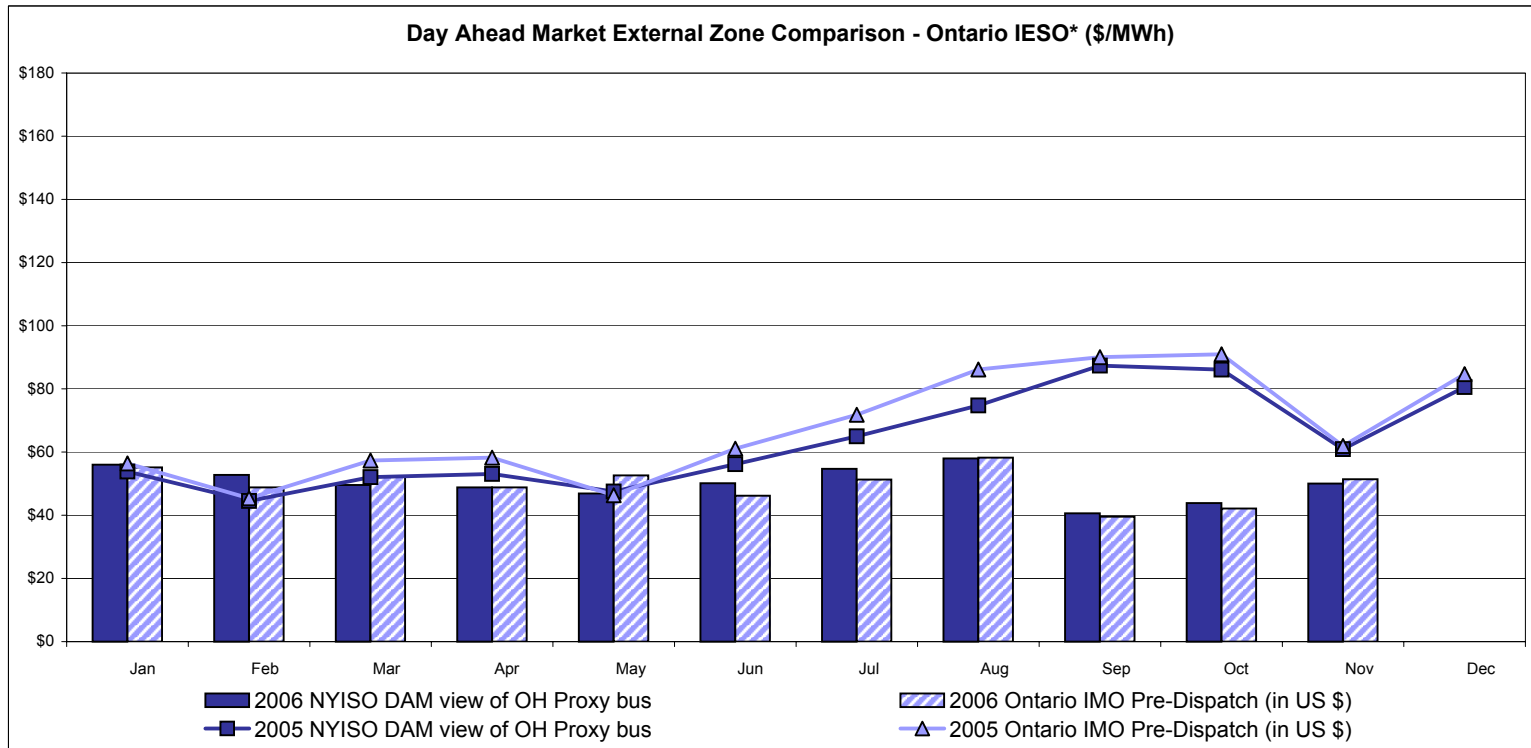
Real Time Market External Zone Comparison - PJM (\$/MWh)



* Referred to as RTC beginning February 2005.
Prior to February 2005 known as BME or Hour Ahead Market (HAM).

Data for November 2006 not yet posted by PJM

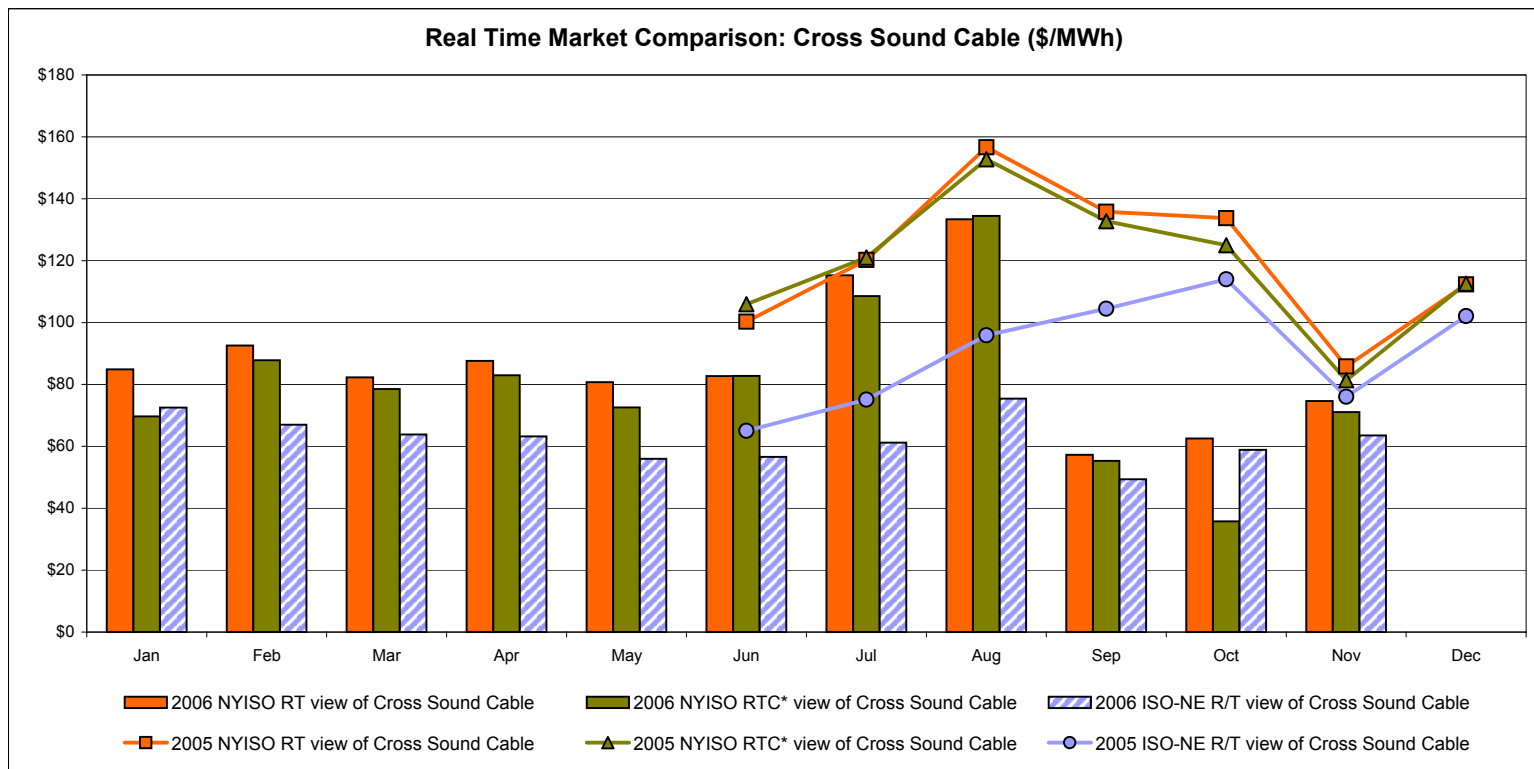
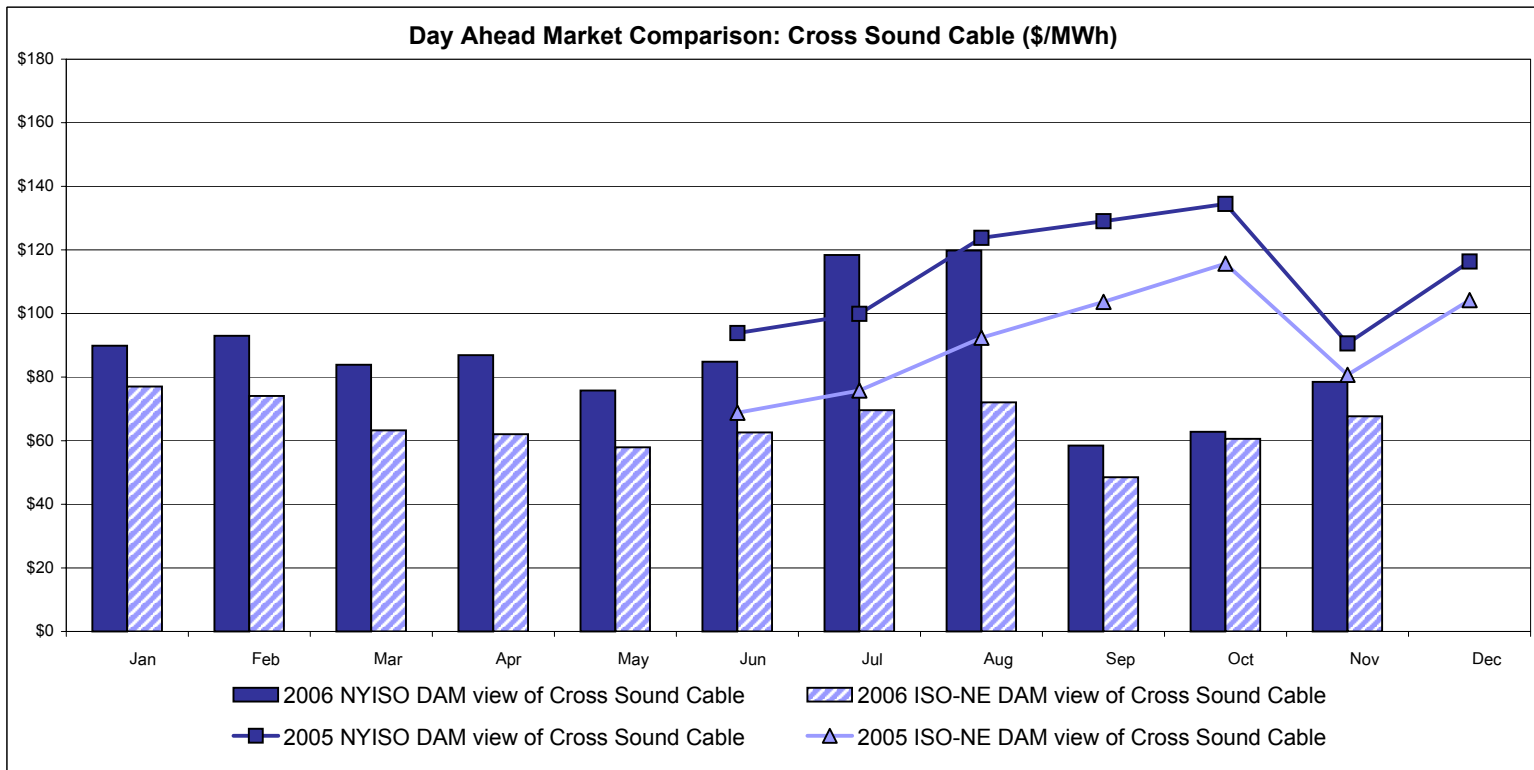
External Comparison Ontario IESO*



Notes: Exchange factor used for November 2006 was .88 to US \$
 HOEP: Hourly Ontario Energy Price
 Pre-Dispatch: Projected Energy Price

* Independent Electricity System Operator formerly known as the Independent Electricity Market Operator (IMO).

External Controllable Line: Cross Sound Cable (New England)



Note:

ISO-NE Forecast is an advisory posting @ 18:00 day before.
 The DAM and R/T prices at the Shorham138 99 interface are used for ISO-NE.
 The DAM and R/T prices at the CSC interface are used for NYISO.

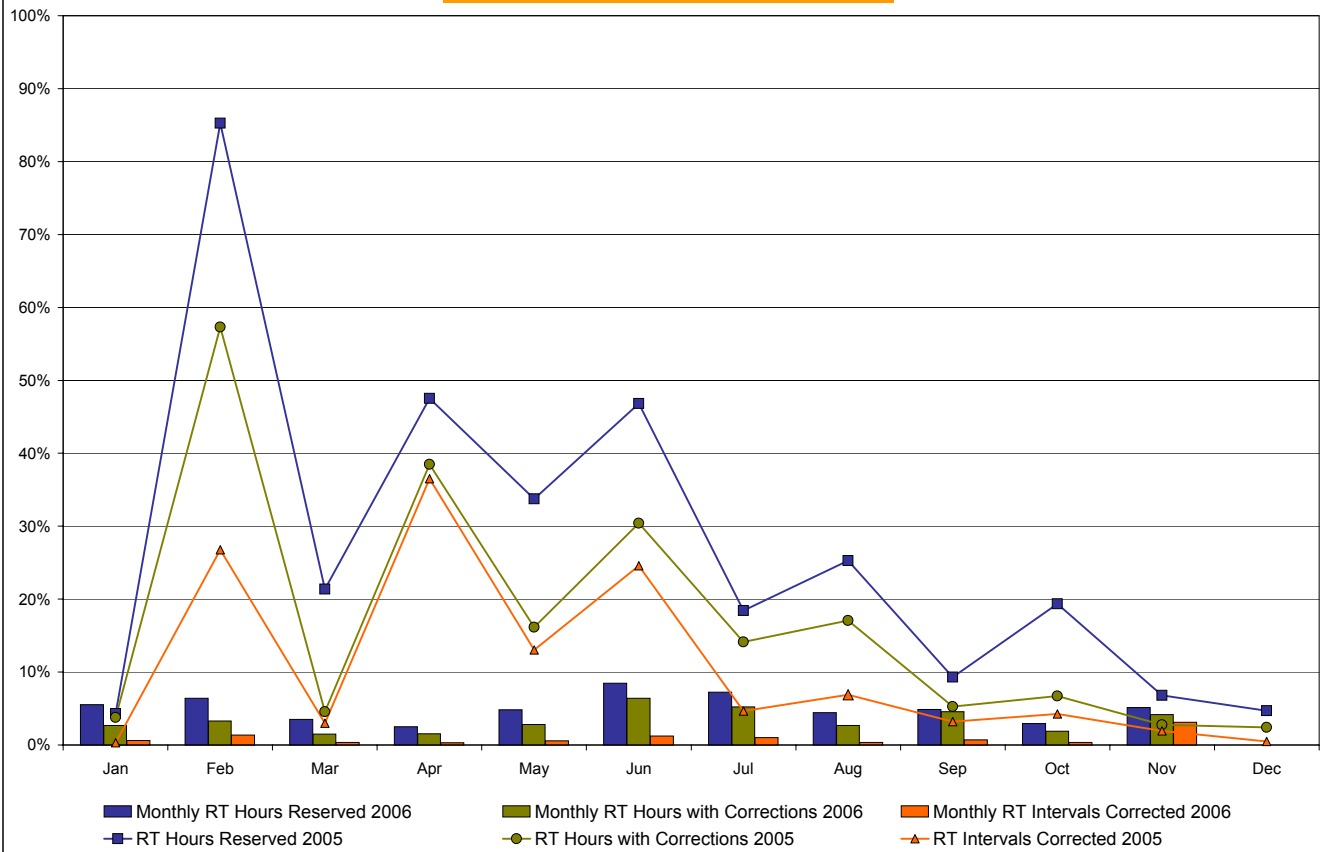
* Referred to as RTC beginning February 2005.
 Prior to February 2005 known as BME or Hour Ahead Market (HAM).

NYISO Real Time Price Correction Statistics

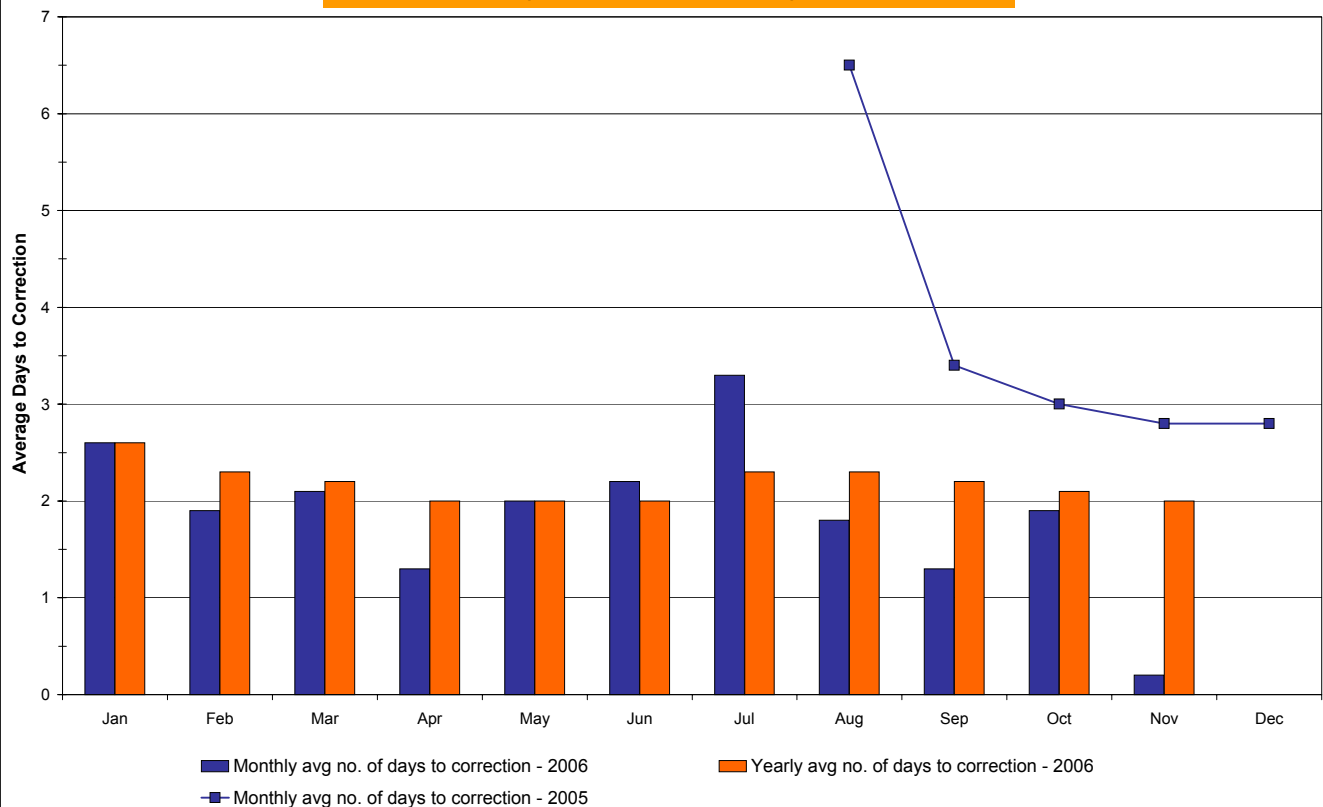
2006		<u>January</u>	<u>February</u>	<u>March</u>	<u>April</u>	<u>May</u>	<u>June</u>	<u>July</u>	<u>August</u>	<u>September</u>	<u>October</u>	<u>November</u>	<u>December</u>
<u>Hour Corrections</u>													
Number of hours with corrections	in the month	20	22	11	11	21	46	39	20	33	14	26	
Number of hours	in the month	744	672	744	720	744	720	744	744	720	744	624	
% of hours with corrections	in the month	2.69%	3.27%	1.48%	1.53%	2.82%	6.39%	5.24%	2.69%	4.58%	1.88%	4.17%	
% of hours with corrections	year-to-date	2.69%	2.97%	2.45%	2.22%	2.35%	3.02%	3.34%	3.26%	3.40%	3.25%	3.32%	
<u>Interval Corrections</u>													
Number of intervals corrected	in the month	54	112	33	27	51	107	92	31	63	30	234	
Number of intervals	in the month	9,004	8,129	9,035	8,779	9,037	8,742	9,083	9,088	8,776	9,021	7,531	
% of intervals corrected	in the month	0.60%	1.38%	0.37%	0.31%	0.56%	1.22%	1.01%	0.34%	0.72%	0.33%	3.11%	
% of intervals corrected	year-to-date	0.60%	0.97%	0.76%	0.65%	0.63%	0.73%	0.77%	0.72%	0.72%	0.68%	0.87%	
<u>Hours Reserved</u>													
Number of hours reserved	in the month	41	43	26	18	36	61	54	33	35	22	32	
Number of hours	in the month	744	672	744	720	744	720	744	744	720	744	624	
% of hours reserved	in the month	5.51%	6.40%	3.49%	2.50%	4.84%	8.47%	7.26%	4.44%	4.86%	2.96%	5.13%	
% of hours reserved	year-to-date	5.51%	5.93%	5.09%	4.44%	4.53%	5.18%	5.48%	5.35%	5.30%	5.06%	5.06%	
<u>Days to Correction *</u>													
Avg. number of days to correction	in the month	2.6	1.9	2.1	1.3	2.0	2.2	3.3	1.8	1.3	1.9	0.2	
Avg. number of days to correction	year-to-date	2.6	2.3	2.2	2.0	2.0	2.0	2.3	2.3	2.2	2.1	2.0	
<u>Days Without Corrections</u>													
Days without corrections	in the month	19	18	24	20	21	15	13	20	20	23	20	
Days without corrections	year-to-date	19	37	61	81	102	117	130	150	170	193	213	
2005		<u>January</u>	<u>February</u>	<u>March</u>	<u>April</u>	<u>May</u>	<u>June</u>	<u>July</u>	<u>August</u>	<u>September</u>	<u>October</u>	<u>November</u>	<u>December</u>
<u>Hour Corrections</u>													
Number of hours with corrections	in the month	28	385	34	277	120	219	105	127	38	50	20	18
Number of hours	in the month	744	672	744	720	744	720	744	744	720	744	720	744
% of hours with corrections	in the month	3.76%	57.29%	4.57%	38.47%	16.13%	30.42%	14.11%	17.07%	5.28%	6.72%	2.78%	2.42%
% of hours with corrections	year-to-date	3.76%	29.17%	20.69%	25.14%	23.29%	24.47%	22.96%	22.21%	20.34%	18.96%	17.50%	16.22%
<u>Interval Corrections</u>													
Number of intervals corrected	in the month	37	2,177	266	3,182	1,170	2,145	421	625	281	386	167	43
Number of intervals	in the month	11,811	8,131	8,961	8,711	8,972	8,729	9,024	9,065	8,741	9,029	8,721	9,115
% of intervals corrected	in the month	0.31%	26.77%	2.97%	36.53%	13.04%	24.57%	4.67%	6.89%	3.21%	4.28%	1.91%	0.47%
% of intervals corrected	year-to-date	0.31%	11.10%	8.58%	15.05%	14.67%	16.23%	14.61%	13.65%	12.54%	11.72%	10.87%	10.00%
<u>Hours Reserved</u>													
Number of hours reserved	in the month	32	573	159	342	251	337	137	188	67	144	49	35
Number of hours	in the month	744	672	744	720	744	720	744	744	720	744	720	744
% of hours reserved	in the month	4.30%	85.27%	21.37%	47.50%	33.74%	46.81%	18.41%	25.27%	9.31%	19.35%	6.81%	4.70%
% of hours reserved	year-to-date	4.30%	42.73%	35.37%	38.40%	37.44%	39.00%	35.99%	34.62%	31.84%	30.56%	28.43%	26.42%
<u>Days to Correction *</u>													
Avg. number of days to correction	in the month	-	-	-	-	-	-	-	6.5	3.4	3.0	2.8	2.8
Avg. number of days to correction	year-to-date	-	-	-	-	-	-	-	-	-	-	-	-
<u>Days Without Corrections</u>													
Days without corrections	in the month	12	4	16	3	4	4	6	6	17	17	22	19
Days without corrections	year-to-date	12	16	32	35	39	43	49	55	72	89	111	130

* Calendar days from reservation date. Data available from August 2005.

Percentage of Real-Time Corrections

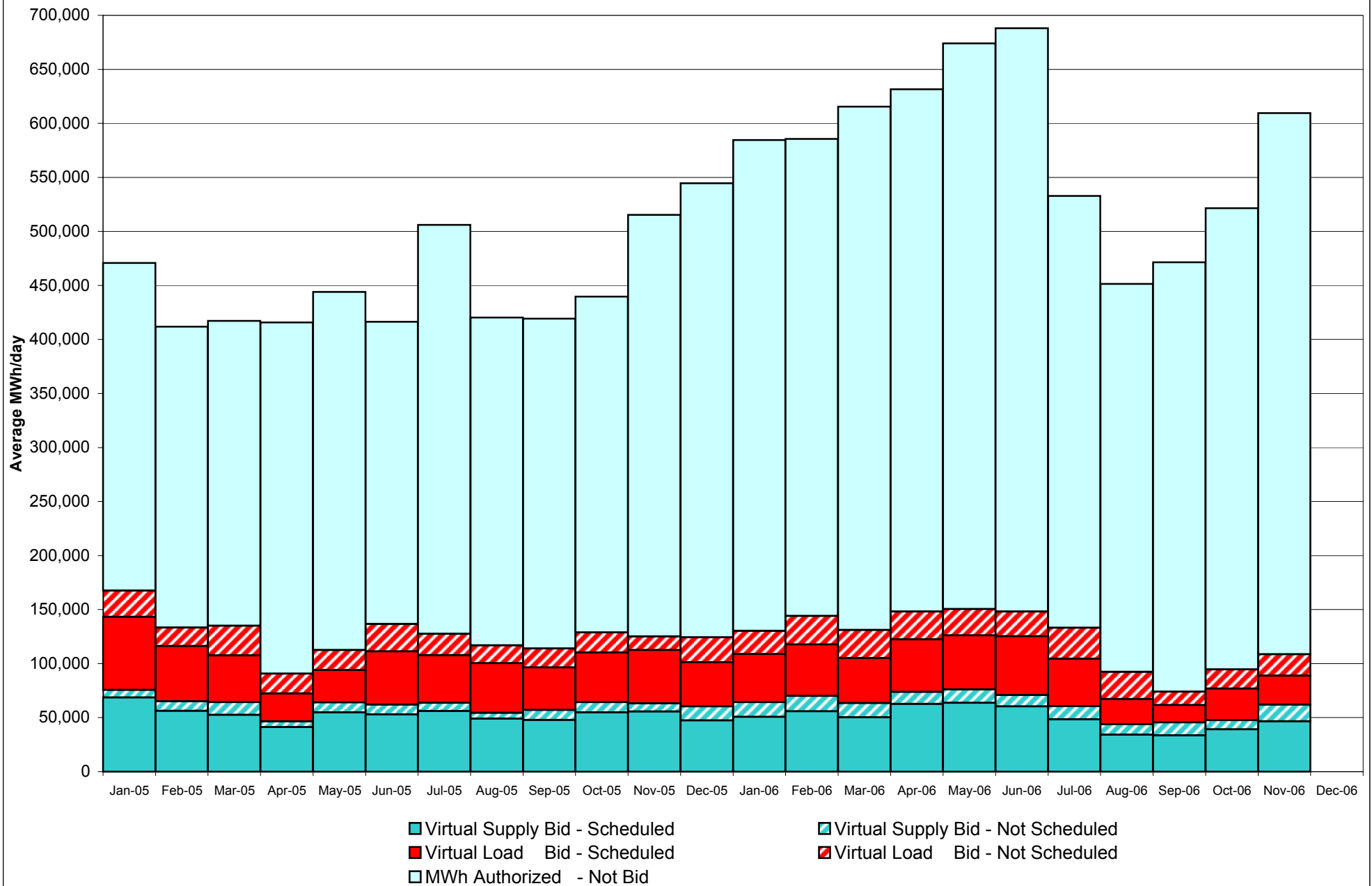


Annual average time period for making Price Corrections (from reservation date) *

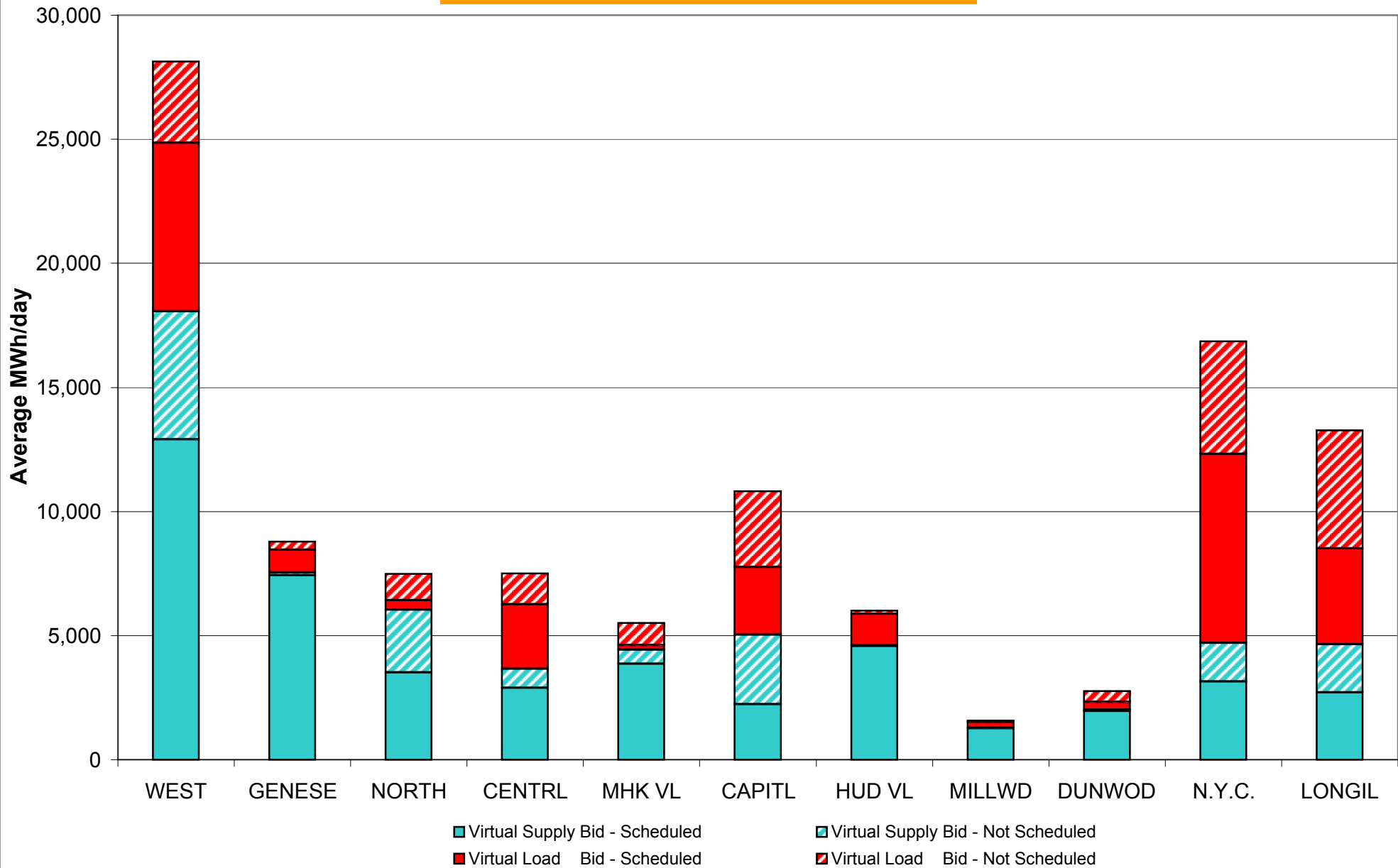


* Calendar days from reservation date. Data available from August 2005.

NYISO Virtual Trading Average MWh per day



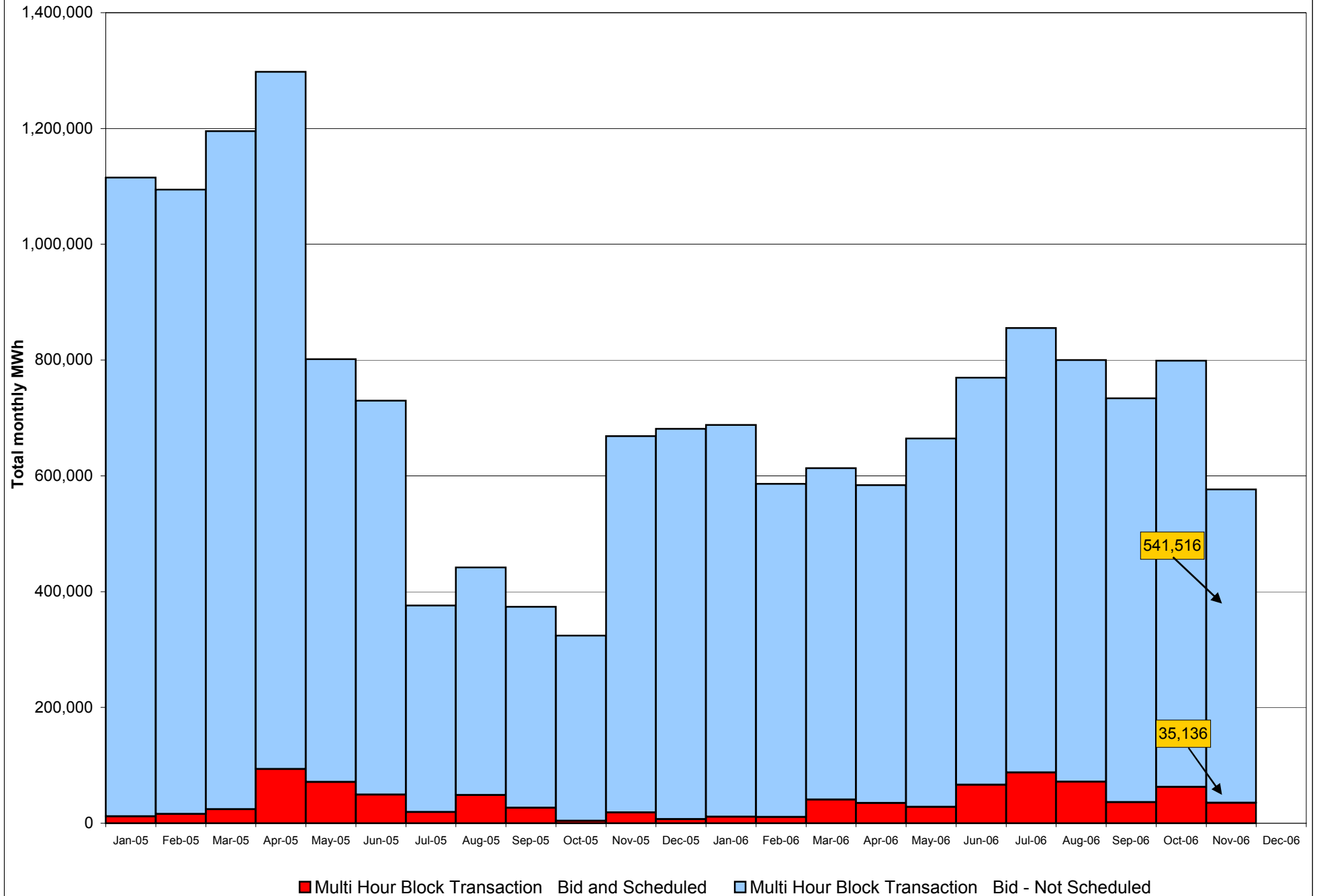
Virtual Load and Supply Zonal Statistics November 2006



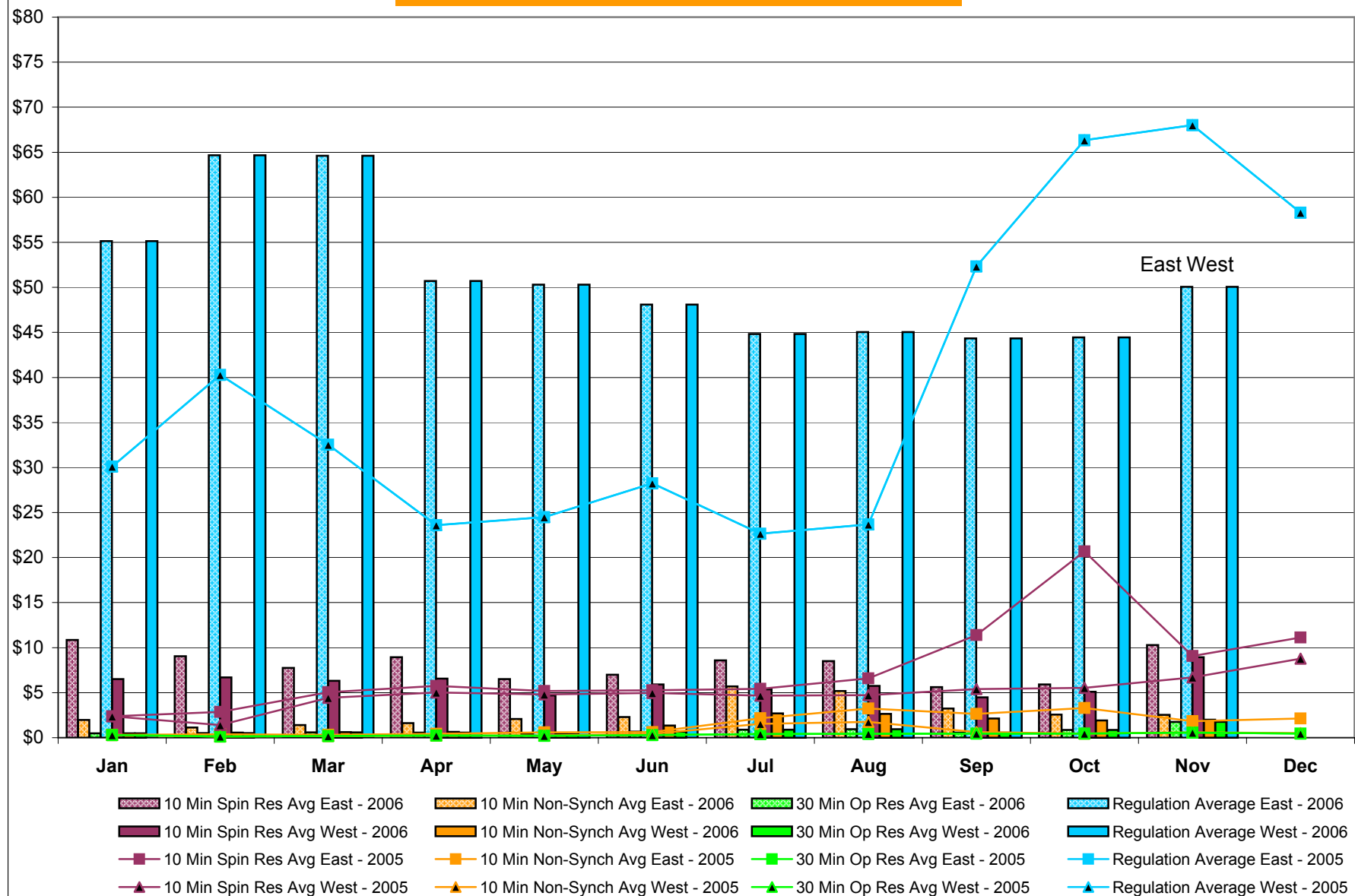
Virtual Load and Supply Zonal Statistics (Average MWh/day) - 2006

Virtual Load Bid						Virtual Supply Bid						Virtual Load Bid						Virtual Supply Bid					
Zone	Date	Scheduled	Not Scheduled	Scheduled	Not Scheduled	Zone	Date	Scheduled	Not Scheduled	Scheduled	Not Scheduled	Zone	Date	Scheduled	Not Scheduled	Scheduled	Not Scheduled	Zone	Date	Scheduled	Not Scheduled	Scheduled	Not Scheduled
WEST	Jan-06	5,890	2,304	11,610	3,141	MHK VL	Jan-06	46	902	5,884	1,636	DUNWOD	Jan-06	745	644	3,267	26		Jan-06	745	644	3,267	26
	Feb-06	5,103	3,356	10,907	3,042		Feb-06	17	930	6,935	891		Feb-06	1,714	399	2,441	42		Feb-06	1,714	399	2,441	42
	Mar-06	3,237	1,807	13,710	2,979		Mar-06	42	932	4,940	937		Mar-06	1,097	47	2,163	27		Mar-06	1,097	47	2,163	27
	Apr-06	3,206	1,676	16,016	2,317		Apr-06	3	841	8,714	579		Apr-06	1,144	722	3,403	60		Apr-06	1,144	722	3,403	60
	May-06	3,602	1,641	13,210	1,806		May-06	40	1,021	8,610	759		May-06	1,056	546	3,949	670		May-06	1,056	546	3,949	670
	Jun-06	2,538	2,185	11,018	1,685		Jun-06	407	892	7,818	989		Jun-06	3,095	748	2,761	45		Jun-06	3,095	748	2,761	45
	Jul-06	1,496	1,960	8,348	1,405		Jul-06	226	932	6,813	1,039		Jul-06	2,819	1,314	1,137	538		Jul-06	2,819	1,314	1,137	538
	Aug-06	2,097	820	6,754	935		Aug-06	35	892	4,793	802		Aug-06	1,118	333	742	223		Aug-06	1,118	333	742	223
	Sep-06	2,478	1,491	4,679	1,637		Sep-06	25	891	3,675	1,507		Sep-06	705	730	1,453	218		Sep-06	705	730	1,453	218
	Oct-06	5,365	1,872	10,860	1,810		Oct-06	146	800	3,560	584		Oct-06	635	757	1,099	101		Oct-06	635	757	1,099	101
	Nov-06	6,792	3,283	12,899	5,165		Nov-06	171	896	3,870	567		Nov-06	306	441	1,951	66		Nov-06	306	441	1,951	66
	Dec-06						Dec-06						Dec-06						Dec-06				
GENESE	Jan-06	1,831	708	6,806	73	CAPITL	Jan-06	3,624	1,646	1,192	48	N.Y.C.	Jan-06	19,500	4,668	1,330	3,334		Jan-06	19,500	4,668	1,330	3,334
	Feb-06	2,434	208	6,652	55		Feb-06	5,155	2,682	1,584	65		Feb-06	16,986	7,228	2,463	2,793		Feb-06	16,986	7,228	2,463	2,793
	Mar-06	1,856	838	6,734	53		Mar-06	2,850	3,171	643	59		Mar-06	12,401	7,131	4,092	2,202		Mar-06	12,401	7,131	4,092	2,202
	Apr-06	3,478	92	6,693	205		Apr-06	2,915	3,767	1,584	847		Apr-06	19,173	6,820	1,189	1,699		Apr-06	19,173	6,820	1,189	1,699
	May-06	4,049	18	8,510	24		May-06	3,690	3,159	877	2,082		May-06	19,528	6,539	402	1,064		May-06	19,528	6,539	402	1,064
	Jun-06	3,158	44	6,400	118		Jun-06	2,750	2,967	2,076	1,950		Jun-06	20,192	5,844	437	598		Jun-06	20,192	5,844	437	598
	Jul-06	2,441	155	5,610	163		Jul-06	1,883	3,011	2,044	1,583		Jul-06	20,370	9,037	729	1,946		Jul-06	20,370	9,037	729	1,946
	Aug-06	2,371	75	5,058	69		Aug-06	1,076	2,869	2,078	1,432		Aug-06	9,289	9,252	972	1,463		Aug-06	9,289	9,252	972	1,463
	Sep-06	1,865	189	7,470	167		Sep-06	563	2,914	1,832	1,955		Sep-06	4,400	1,687	1,599	818		Sep-06	4,400	1,687	1,599	818
	Oct-06	1,240	612	3,650	187		Oct-06	2,186	3,260	2,544	1,755		Oct-06	8,378	3,412	1,940	201		Oct-06	8,378	3,412	1,940	201
	Nov-06	915	333	7,437	99		Nov-06	2,719	3,066	2,227	2,811		Nov-06	7,614	4,552	3,143	1,556		Nov-06	7,614	4,552	3,143	1,556
	Dec-06						Dec-06						Dec-06						Dec-06				
NORTH	Jan-06	262	22	5,961	1,658	HUD VL	Jan-06	2,086	2,026	8,595	1,717	LONGIL	Jan-06	8,207	6,064	1,091	1,891		Jan-06	8,207	6,064	1,091	1,891
	Feb-06	139	101	6,749	2,570		Feb-06	3,722	1,834	8,989	1,964		Feb-06	9,345	8,197	1,088	2,511		Feb-06	9,345	8,197	1,088	2,511
	Mar-06	264	21	7,069	2,838		Mar-06	8,898	1,851	5,128	1,716		Mar-06	8,449	10,059	991	2,357		Mar-06	8,449	10,059	991	2,357
	Apr-06	96	695	8,243	1,926		Apr-06	9,888	1,640	10,242	1,034		Apr-06	7,291	8,424	930	1,750		Apr-06	7,291	8,424	930	1,750
	May-06	9	921	7,895	1,596		May-06	8,934	1,330	12,005	1,311		May-06	8,188	7,792	1,125	1,939		May-06	8,188	7,792	1,125	1,939
	Jun-06	204	910	9,925	1,660		Jun-06	7,728	964	10,828	872		Jun-06	11,324	7,000	1,573	1,663		Jun-06	11,324	7,000	1,573	1,663
	Jul-06	14	896	8,332	1,340		Jul-06	1,881	1,058	8,272	1,389		Jul-06	8,917	8,823	1,657	1,693		Jul-06	8,917	8,823	1,657	1,693
	Aug-06	8	888	5,238	1,971		Aug-06	632	871	4,617	572		Aug-06	6,003	7,838	887	1,407		Aug-06	6,003	7,838	887	1,407
	Sep-06	169	889	3,403	1,744		Sep-06	420	430	3,938	709		Sep-06	5,219	2,062	972	2,107		Sep-06	5,219	2,062	972	2,107
	Oct-06	711	951	3,432	1,109		Oct-06	2,263	561	6,599	398		Oct-06	3,852	3,616	2,078	1,471		Oct-06	3,852	3,616	2,078	1,471
	Nov-06	393	1,053	3,523	2,513		Nov-06	1,267	123	4,576	38		Nov-06	3,861	4,760	2,716	1,939		Nov-06	3,861	4,760	2,716	1,939
	Dec-06						Dec-06						Dec-06						Dec-06				
CENTRL	Jan-06	713	28	3,870	103	MILLWD	Jan-06	1,531	2,596	1,065	11	NYISO	Jan-06	44,436	21,609	50,671	13,639		Jan-06	44,436	21,609	50,671	13,639
	Feb-06	395	27	7,081	165		Feb-06	2,540	1,560	1,067	24		Feb-06	47,550	26,523	55,956	14,122		Feb-06	47,550	26,523	55,956	14,122
	Mar-06	581	28	4,683	31		Mar-06	1,799	135	189	7		Mar-06	41,475	26,020	50,342	13,205		Mar-06	41,475	26,020	50,342	13,205
	Apr-06	673	882	4,838	522		Apr-06	943	97	904	28		Apr-06	48,811	25,655	62,755	10,967		Apr-06	48,811	25,655	62,755	10,967
	May-06	674	1,101	4,694	945		May-06	453	210	2,346	169		May-06	50,222	24,279	63,624	12,364		May-06	50,222	24,279	63,624	12,364
	Jun-06	578	1,098	6,115	900		Jun-06	2,543	95	1,352	118		Jun-06	54,518	22,746	60,303	10,597		Jun-06	54,518	22,746	60,303	10,597
	Jul-06	1,032	1,377	4,672	687		Jul-06	2,935	61	804	335		Jul-06	44,013	28,624	48,419	12,117		Jul-06	44,013	28,624	48,419	12,117
	Aug-06	189	1,083	2,770	638		Aug-06	607	91	393	22		Aug-06	23,425	25,012	34,301	9,533		Aug-06	23,425	25,012	34,301	9,533
	Sep-06	94	1,206	3,815	1,103		Sep-06	102	3	677	67		Sep-06	16,039	12,492	33,512	12,032		Sep-06	16,039	12,492	33,512	12,032
	Oct-06	4,274	1,755	2,358	881		Oct-06	285	16	967	16		Oct-06	29,333	17,612	39,088	8,512		Oct-06	29,333	17,612	39,088	8,512
	Nov-06	2,607	1,248	2,885	767		Nov-06	233	47	1,270	18		Nov-06	26,879	19,803	46,496	15,540		Nov-06	26,879	19,803	46,496	15,540
	Dec-06						Dec-06						Dec-06						Dec-06				

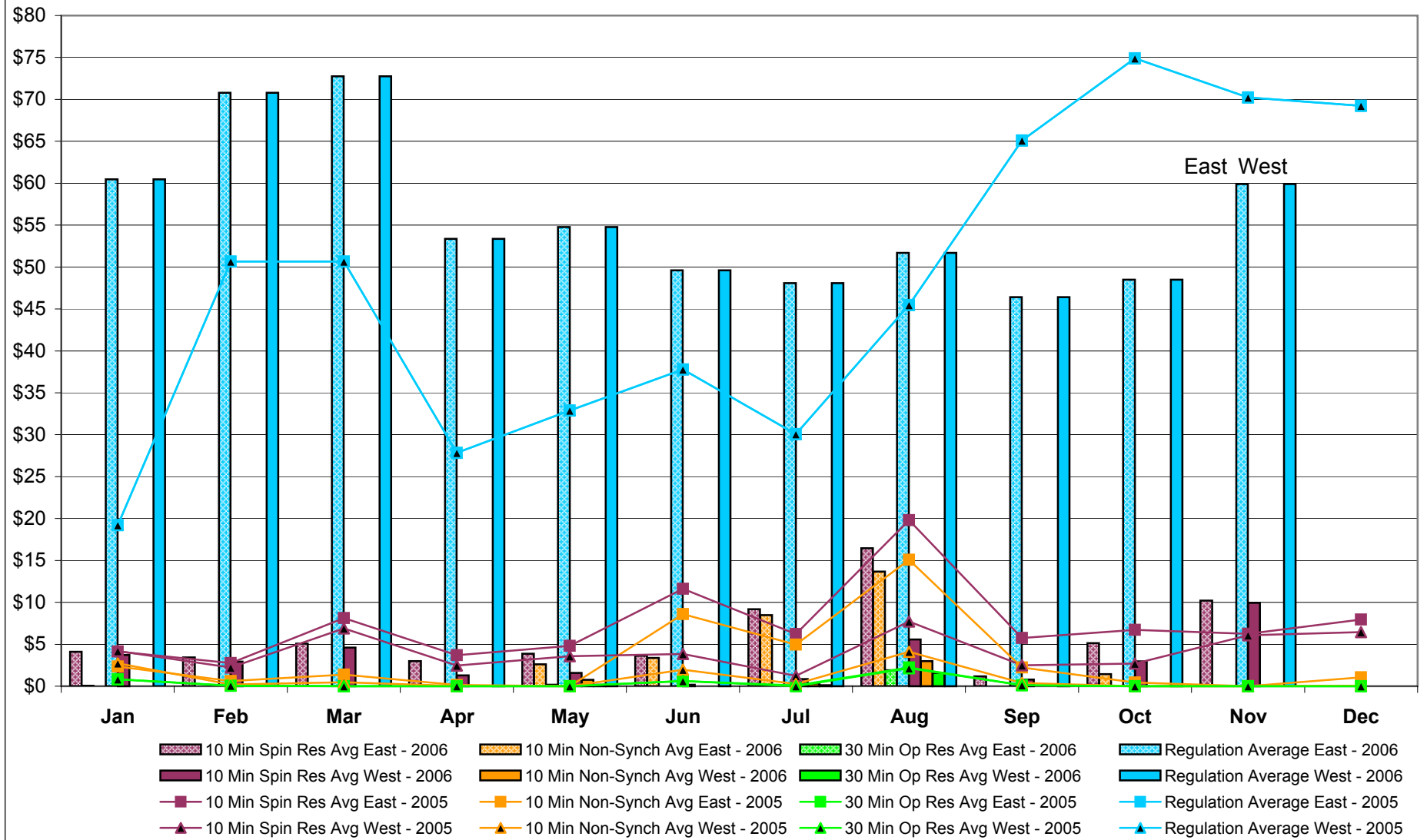
NYISO Multi Hour Block Transactions Monthly Total MWh



NYISO Monthly Average Ancillary Service Prices Day Ahead Market 2005 - 2006

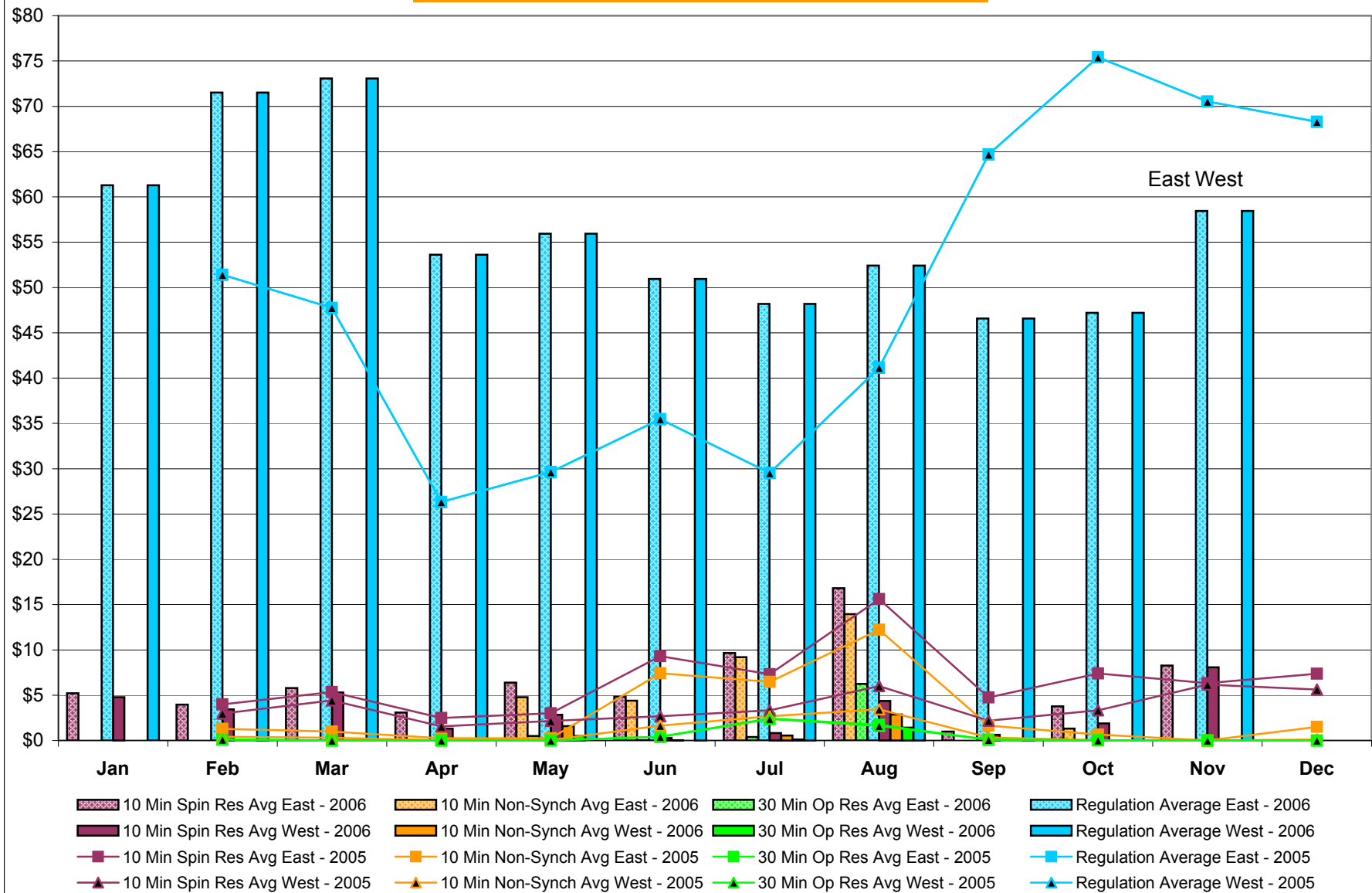


NYISO Monthly Average Ancillary Service Prices RTC* Market 2005 - 2006



* Referred to as RTC beginning February 2005
Prior to February 2005 known as BME or Hour Ahead Market (HAM)

NYISO Monthly Average Ancillary Service Prices Real Time Market* 2005 - 2006



* The Real Time Ancillary Market began in February 2005

NYISO Markets Ancillary Services Statistics - Unweighted Price (\$/MWH)

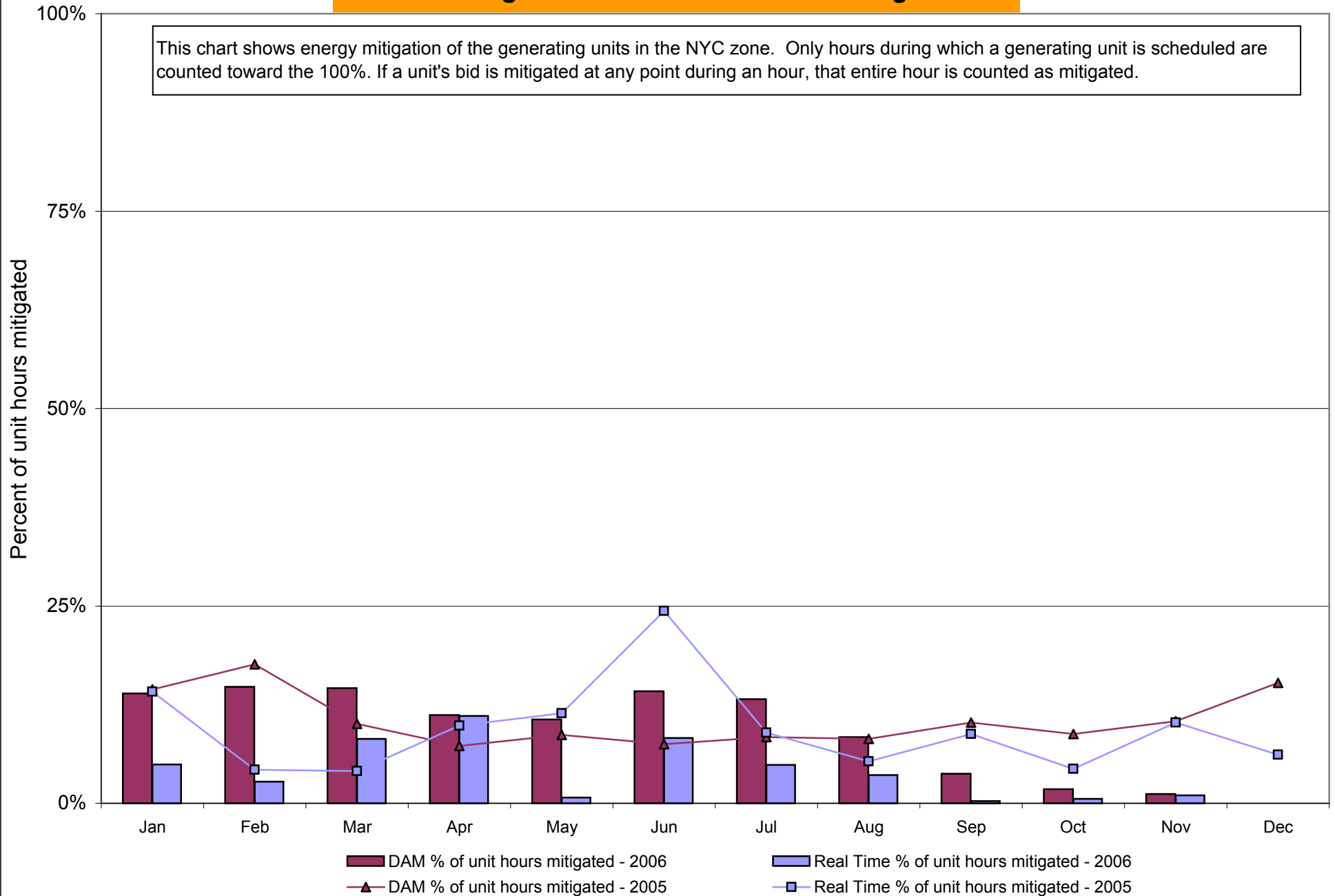
2006	<u>January</u>	<u>February</u>	<u>March</u>	<u>April</u>	<u>May</u>	<u>June</u>	<u>July</u>	<u>August</u>	<u>September</u>	<u>October</u>	<u>November</u>	<u>December</u>
<u>Day Ahead Market</u>												
10 Min Spin East	10.86	9.06	7.76	8.94	6.52	6.98	8.60	8.50	5.62	5.90	10.30	
10 Min Spin West	6.50	6.70	6.32	6.56	4.71	5.92	5.37	5.76	4.49	5.11	8.93	
10 Min Non Synch East	1.97	1.15	1.39	1.63	2.07	2.31	5.71	5.19	3.25	2.55	2.54	
10 Min Non Synch West	0.50	0.56	0.62	0.66	0.40	1.34	2.69	2.64	2.13	1.90	2.00	
30 Min East	0.48	0.52	0.59	0.58	0.38	0.66	0.89	0.95	0.56	0.87	1.75	
30 Min West	0.48	0.52	0.59	0.58	0.38	0.66	0.89	0.95	0.56	0.87	1.75	
Regulation East	55.13	64.65	64.62	50.71	50.30	48.10	44.83	45.04	44.34	44.43	50.05	
Regulation West	55.13	64.65	64.62	50.71	50.30	48.10	44.83	45.04	44.34	44.43	50.05	
<u>RTC* Market</u>												
10 Min Spin East	4.10	3.44	5.07	3.00	3.86	3.65	9.19	16.44	1.17	5.12	10.21	
10 Min Spin West	3.71	2.93	4.59	1.28	1.60	0.18	0.85	5.56	0.79	2.96	9.94	
10 Min Non Synch East	0.02	0.01	0.00	0.01	2.60	3.36	8.48	13.68	0.00	1.43	0.00	
10 Min Non Synch West	0.00	0.00	0.00	0.00	0.77	0.00	0.32	3.01	0.00	0.01	0.00	
30 Min East	0.00	0.00	0.00	0.00	0.19	0.00	0.11	1.90	0.00	0.00	0.00	
30 Min West	0.00	0.00	0.00	0.00	0.19	0.00	0.11	1.57	0.00	0.00	0.00	
Regulation East	60.46	70.79	72.76	53.37	54.76	49.60	48.08	51.68	46.42	48.49	59.91	
Regulation West	60.46	70.79	72.76	53.37	54.76	49.60	48.08	51.68	46.42	48.49	59.91	
<u>Real Time Market**</u>												
10 Min Spin East	5.20	3.96	5.78	3.07	6.38	4.84	9.66	16.81	0.98	3.76	8.28	
10 Min Spin West	4.78	3.43	5.30	1.32	2.82	0.28	0.81	4.37	0.63	1.89	8.08	
10 Min Non Synch East	0.01	0.00	0.00	0.01	4.79	4.40	9.20	13.94	0.00	1.30	0.00	
10 Min Non Synch West	0.00	0.00	0.00	0.00	1.58	0.02	0.54	2.86	0.00	0.01	0.00	
30 Min East	0.00	0.00	0.00	0.00	0.49	0.02	0.37	6.24	0.00	0.00	0.00	
30 Min West	0.00	0.00	0.00	0.00	0.49	0.01	0.12	1.41	0.00	0.00	0.00	
Regulation East	61.28	71.52	73.06	53.62	55.93	50.95	48.17	52.42	46.56	47.21	58.45	
Regulation West	61.28	71.52	73.06	53.62	55.93	50.95	48.17	52.42	46.56	47.21	58.45	
2005	<u>January</u>	<u>February</u>	<u>March</u>	<u>April</u>	<u>May</u>	<u>June</u>	<u>July</u>	<u>August</u>	<u>September</u>	<u>October</u>	<u>November</u>	<u>December</u>
<u>Day Ahead Market</u>												
10 Min Spin East	2.38	2.87	5.06	5.76	5.19	5.26	5.44	6.59	11.38	20.70	9.08	11.12
10 Min Spin West	2.37	1.39	4.43	5.03	4.80	4.96	4.68	4.73	5.41	5.54	6.68	8.77
10 Min Non Synch East	0.31	0.37	0.31	0.44	0.60	0.61	2.16	3.25	2.65	3.31	1.82	2.14
10 Min Non Synch West	0.31	0.13	0.20	0.24	0.23	0.43	1.54	1.75	0.63	0.47	0.59	0.52
30 Min East	0.31	0.13	0.19	0.24	0.22	0.29	0.41	0.44	0.47	0.46	0.57	0.47
30 Min West	0.31	0.13	0.19	0.24	0.22	0.29	0.41	0.44	0.47	0.46	0.57	0.47
Regulation East	30.10	40.28	32.53	23.61	24.49	28.23	22.66	23.67	52.33	66.33	68.02	58.28
Regulation West	30.10	40.28	32.53	23.61	24.49	28.23	22.66	23.67	52.33	66.33	68.02	58.28
<u>RTC* Market</u>												
10 Min Spin East	4.15	2.75	8.13	3.71	4.80	11.61	6.23	19.80	5.75	6.72	6.25	7.94
10 Min Spin West	4.20	2.23	6.90	2.46	3.58	3.84	1.24	7.72	2.50	2.69	6.06	6.45
10 Min Non Synch East	2.35	0.62	1.38	0.14	0.00	8.58	4.96	15.08	2.22	0.44	0.01	1.07
10 Min Non Synch West	2.72	0.21	0.47	0.03	0.00	1.96	0.25	4.09	0.37	0.00	0.00	0.06
30 Min East	0.83	0.05	0.00	0.00	0.00	0.62	0.08	2.22	0.12	0.00	0.00	0.00
30 Min West	0.83	0.05	0.00	0.00	0.00	0.61	0.00	2.15	0.12	0.00	0.00	0.00
Regulation East	19.23	50.66	50.65	27.85	32.87	37.80	30.07	45.47	65.10	74.90	70.23	69.23
Regulation West	19.23	50.66	50.65	27.85	32.87	37.80	30.07	45.47	65.10	74.90	70.23	69.23
<u>Real Time Market**</u>												
10 Min Spin East	-	3.99	5.34	2.47	3.00	9.30	7.30	15.60	4.75	7.40	6.32	7.36
10 Min Spin West	-	2.97	4.42	1.56	2.16	2.69	3.33	5.99	2.19	3.34	6.16	5.62
10 Min Non Synch East	-	1.27	0.98	0.25	0.24	7.43	6.46	12.22	1.63	0.65	0.00	1.49
10 Min Non Synch West	-	0.41	0.29	0.02	0.07	1.63	2.68	3.44	0.33	0.01	0.00	0.12
30 Min East	-	0.12	0.00	0.00	0.00	0.40	2.43	1.71	0.09	0.01	0.00	0.00
30 Min West	-	0.11	0.00	0.00	0.00	0.40	2.36	1.61	0.09	0.01	0.00	0.00
Regulation East	-	51.41	47.74	26.33	29.62	35.47	29.52	41.14	64.70	75.41	70.52	68.30
Regulation West	-	51.41	47.74	26.33	29.62	35.47	29.52	41.13	64.70	75.41	70.52	68.30

* Referred to as RTC beginning February 2005. Prior to February 2005 known as BME or Hour Ahead Market (HAM).

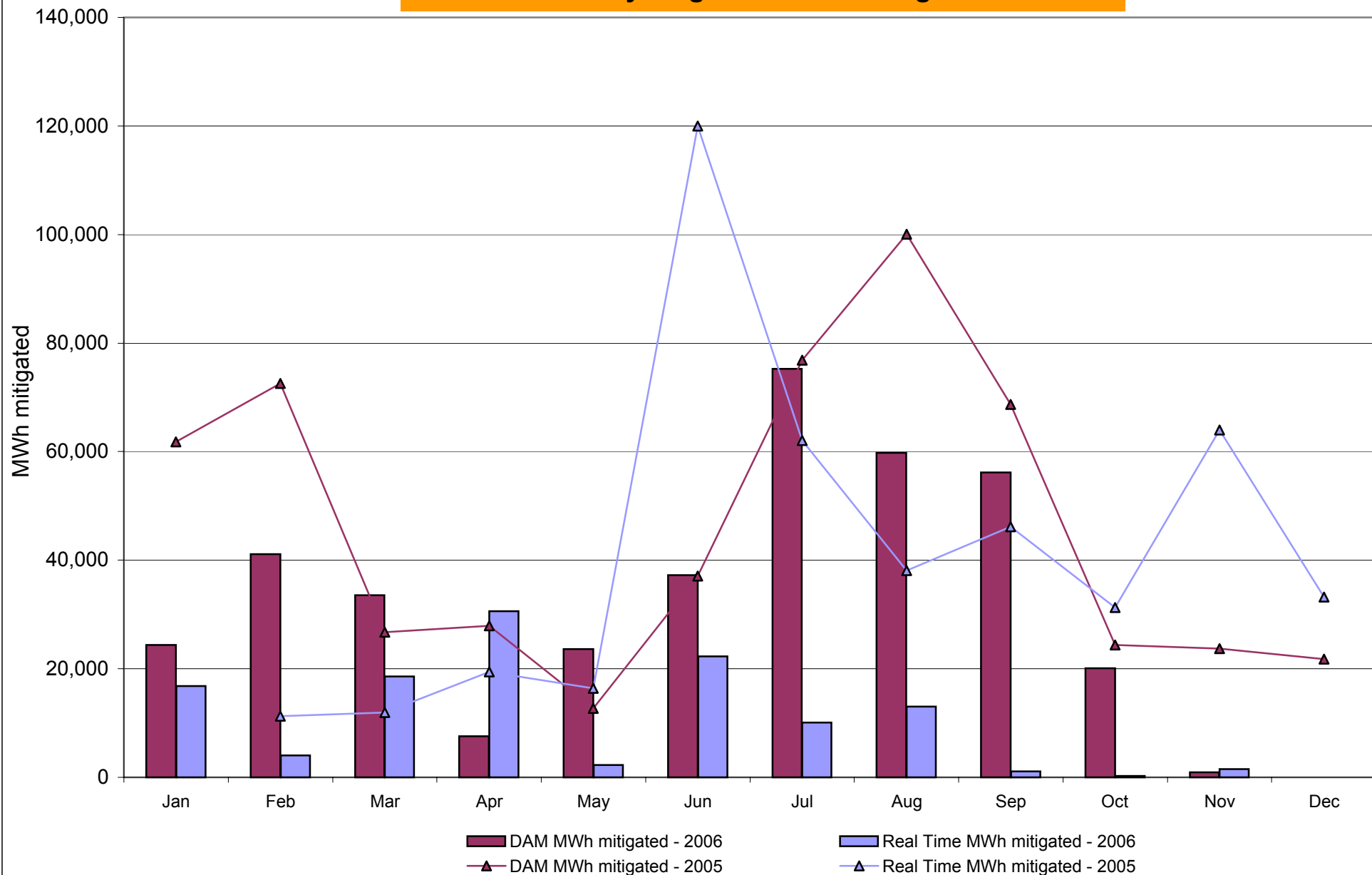
** The Real Time Ancillary Market began in February 2005.

NYISO In City Energy Mitigation (NYC Zone) 2005-2006

Percentage of committed unit-hours mitigated

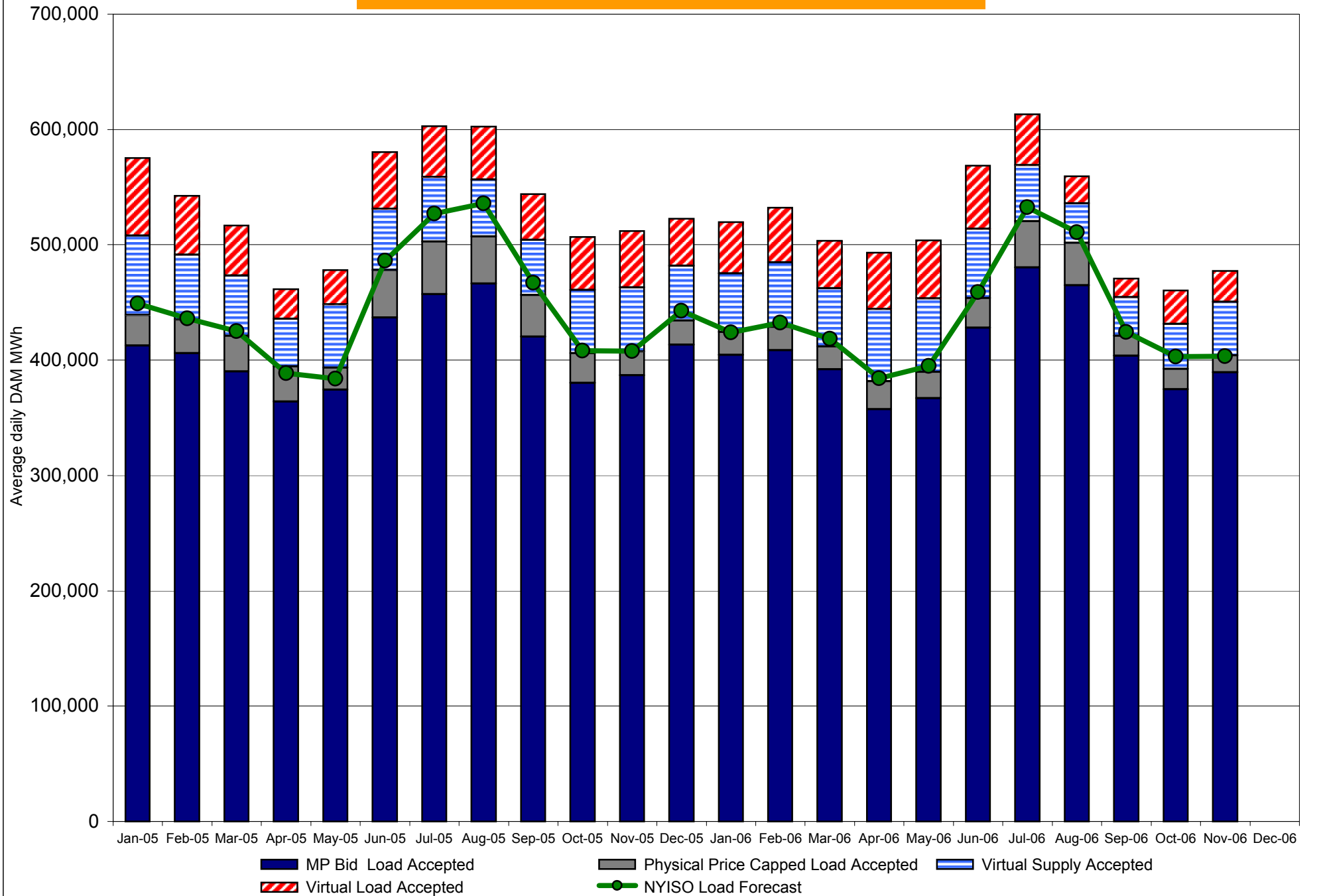


NYISO In City Energy Mitigation (NYC Zone) 2005-2006 **Monthly megawatt hours mitigated**

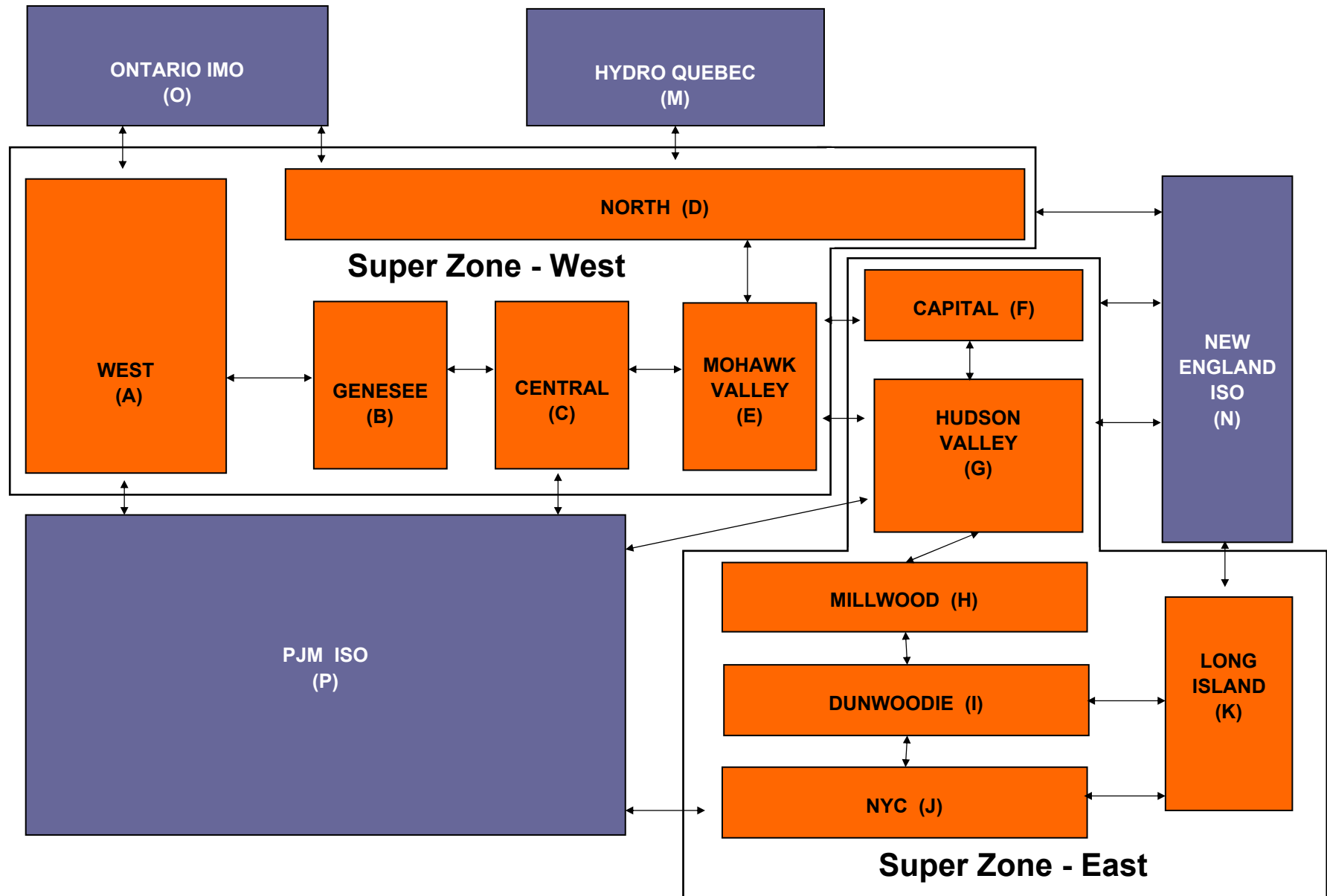


RT mitigation data available with SMD2 deployment in February 2005.

NYISO Average Daily DAM Load Bid Summary



NYISO LBMP ZONES



Billing Codes for Chart 4-C

Chart 4-C Category Name	Billing Code	Billing Category Name
Bid Production Cost Guarantee Balancing	81203	Balancing NYISO Bid Production Cost Guarantee - Internal Units
Bid Production Cost Guarantee Balancing	81204	Balancing NYISO Bid Production Cost Guarantee - External Units
Bid Production Cost Guarantee Balancing	81205	Balancing NYISO Bid Production Cost Guarantee Expenditure due to Curtailed Imports
Bid Production Cost Guarantee Balancing	81208	Balancing NYISO Bid Production Cost Guarantee - Internal Units
Bid Production Cost Guarantee Balancing	81209	Balancing NYISO Bid Production Cost Guarantee - External Units
Bid Production Cost Guarantee Balancing	81213	Balancing NYISO Bid Production Cost Guarantee Expenditure due to Curtailed Imports
Bid Production Cost Guarantee DAM	81201	DAM NYISO Bid Production Cost Guarantee - Internal Units
Bid Production Cost Guarantee DAM	81202	DAM NYISO Bid Production Cost Guarantee - External Units
Bid Production Cost Guarantee DAM	81206	DAM NYISO Bid Production Cost Guarantee - Internal Units
Bid Production Cost Guarantee DAM	81207	DAM NYISO Bid Production Cost Guarantee - External Units
Bid Production Cost Guarantee DAM Virtual	81501	DAM Virtual Bid Production Cost Guarantee
DAM Contract Balancing	81315	DAM Contract Balancing
DAM Contract Balancing	81317	DAM Contract Balancing
Local Reliability Balancing	81002	Balancing Local Reliability Bid Production Cost Guarantee
Local Reliability DAM	81001	DAM Local Reliability Bid Production Cost Guarantee
NYISO Cost of Operations	80901	NYISO Cost Of Operations
NYISO Cost of Operations	80902	NYISO Cost Of Operations
NYISO Cost of Operations	83501	NYISO Cost Of Operations
NYISO Cost of Operations	83502	NYISO Cost Of Operations
Residuals Balancing	81302	Balancing Market Energy Residual
Residuals Balancing	81304	Balancing Market Loss Residual
Residuals Balancing	81305	Balancing Market Congestion Balancing
Residuals Balancing	81306	Emergency Energy Purchases
Residuals Balancing	81307	Emergency Energy Sales
Residuals Balancing	81309	Balancing Market Energy Residual
Residuals Balancing	81311	Balancing Market Loss Residual
Residuals Balancing	81312	Balancing Market Congestion Balancing
Residuals Balancing	81313	Emergency Energy Purchases
Residuals Balancing	81314	Emergency Energy Sales
Residuals DAM	81301	Day Ahead Market Energy Residual
Residuals DAM	81303	Day Ahead Market Loss Residual
Residuals DAM	81308	Day Ahead Market Energy Residual
Residuals DAM	81310	Day Ahead Market Loss Residual