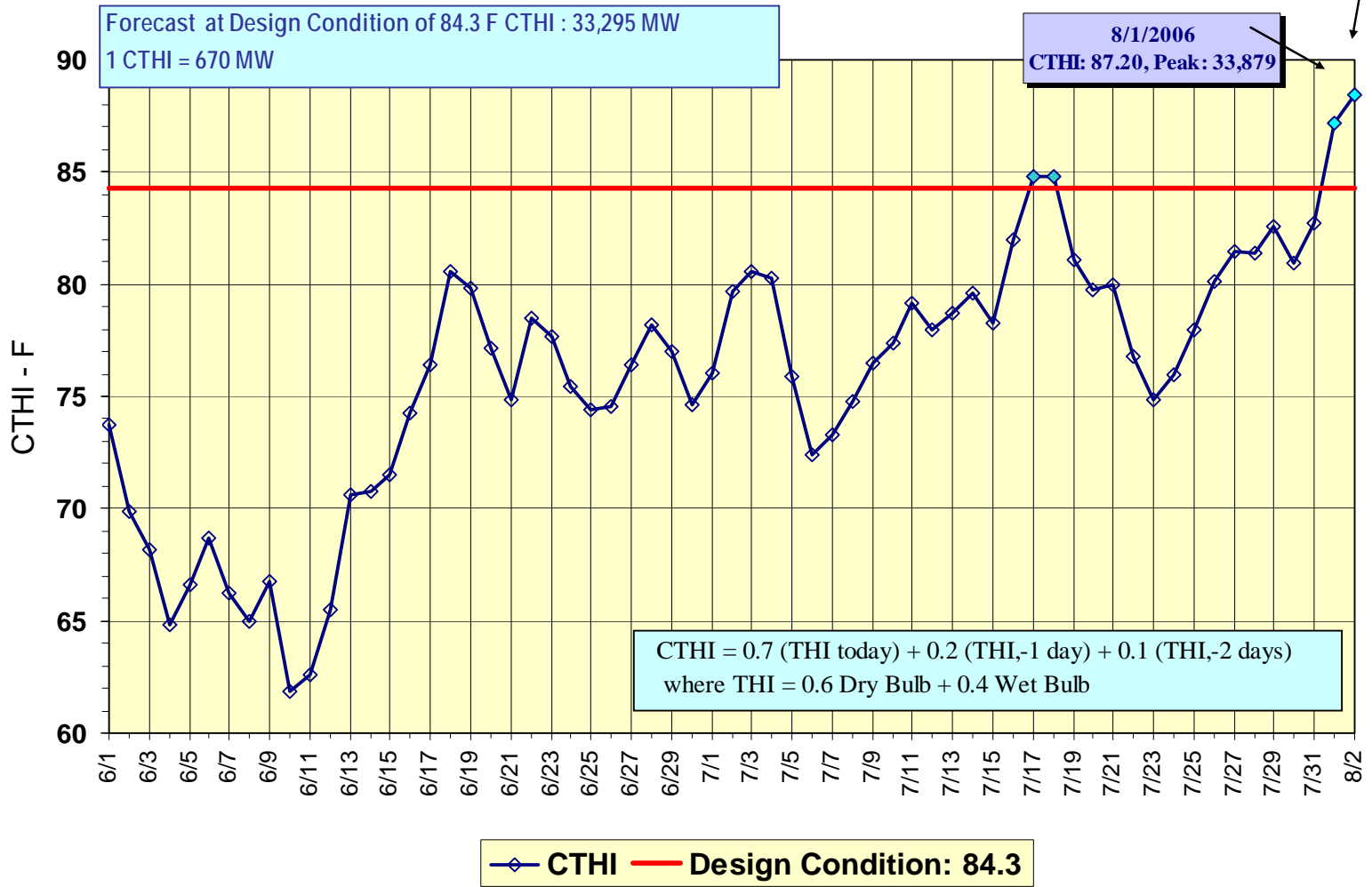
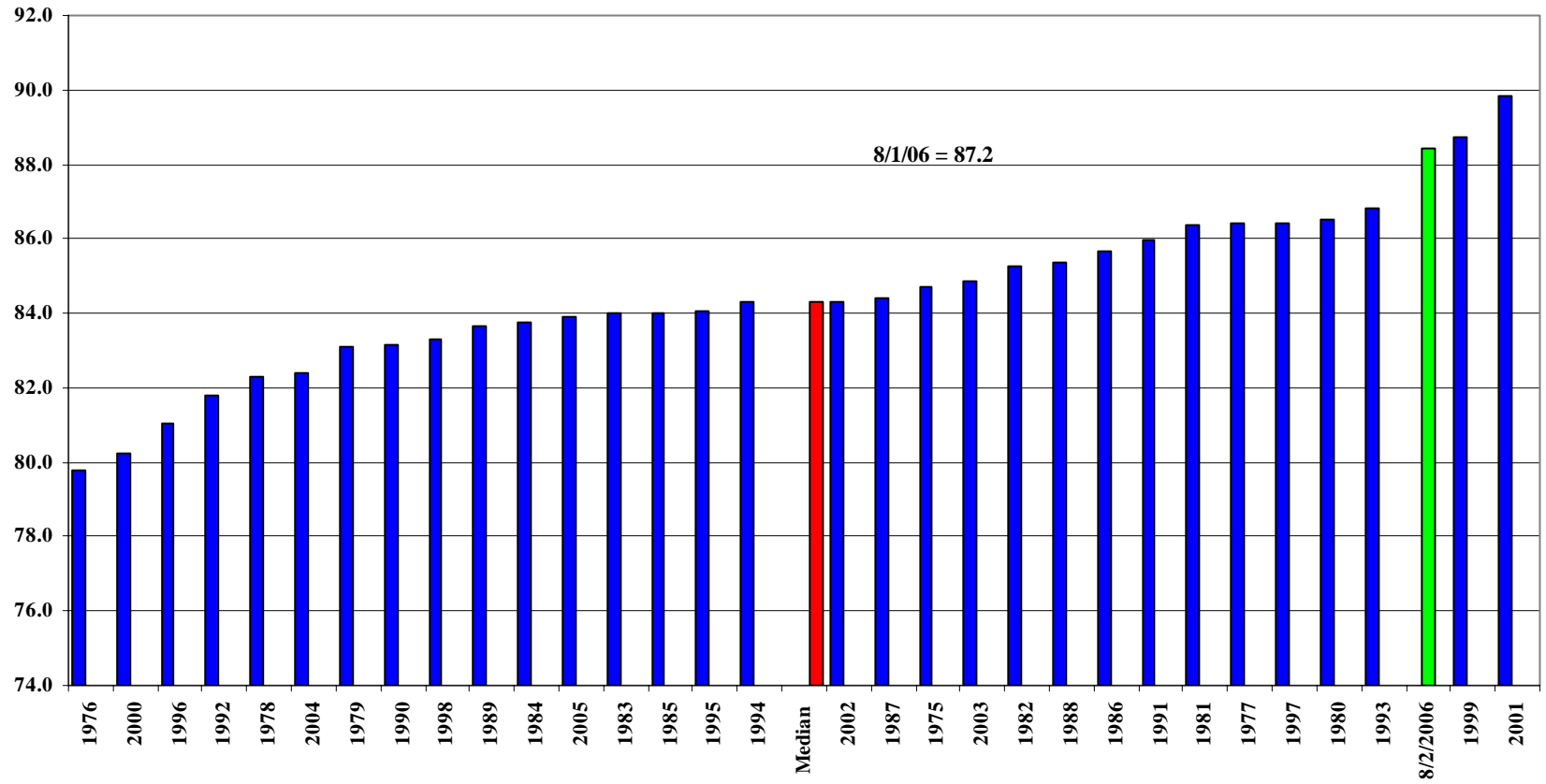
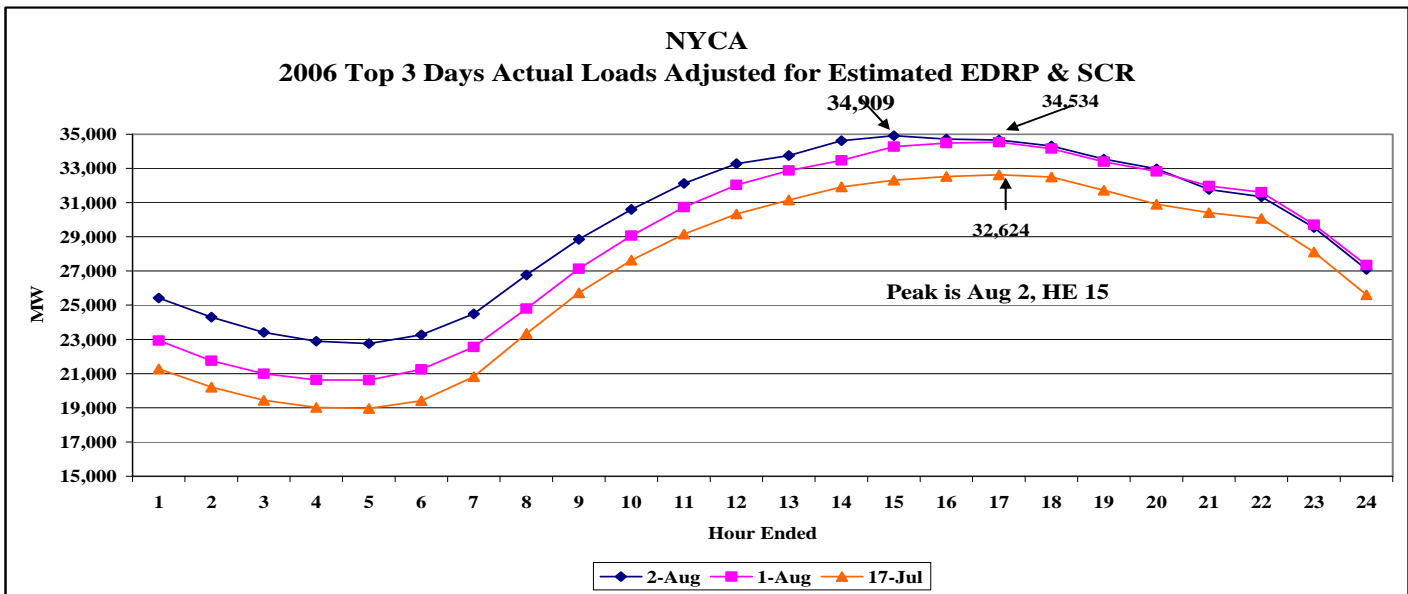
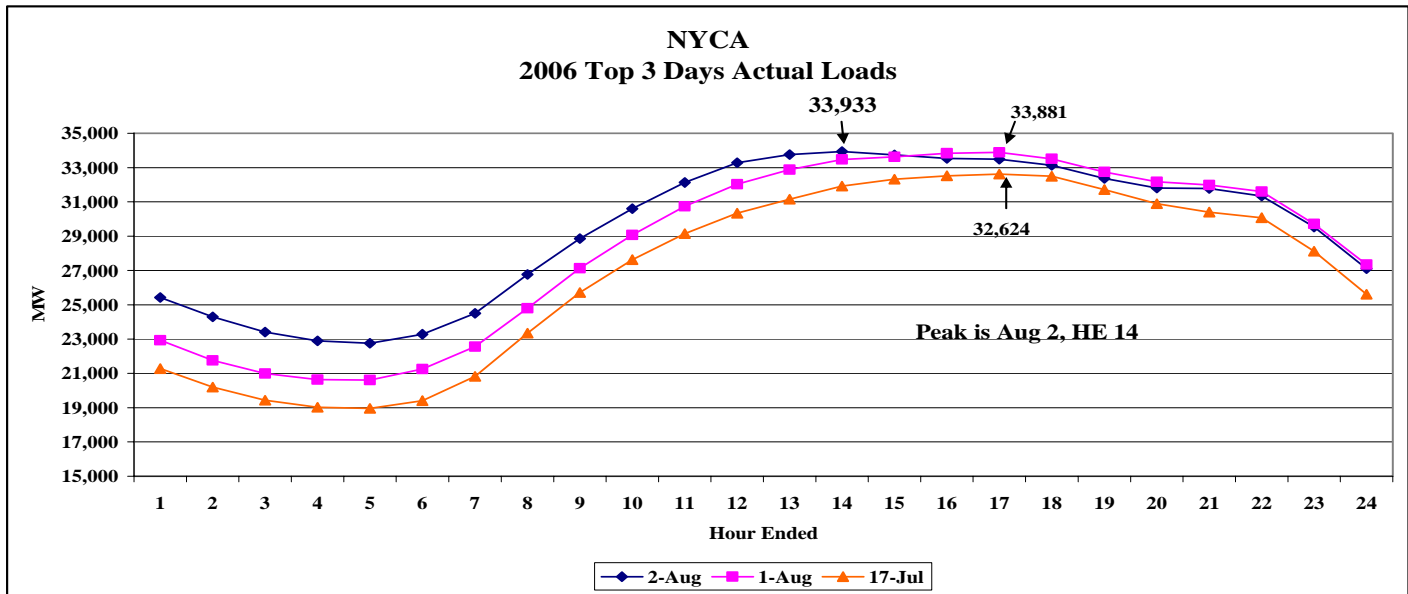


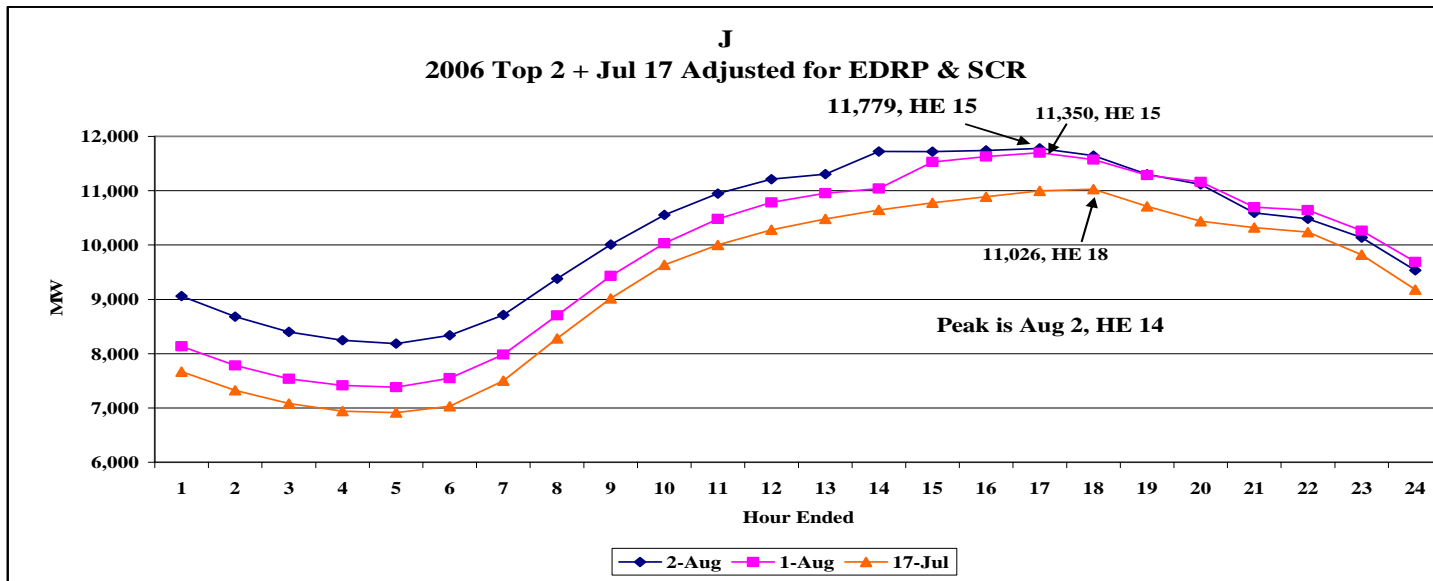
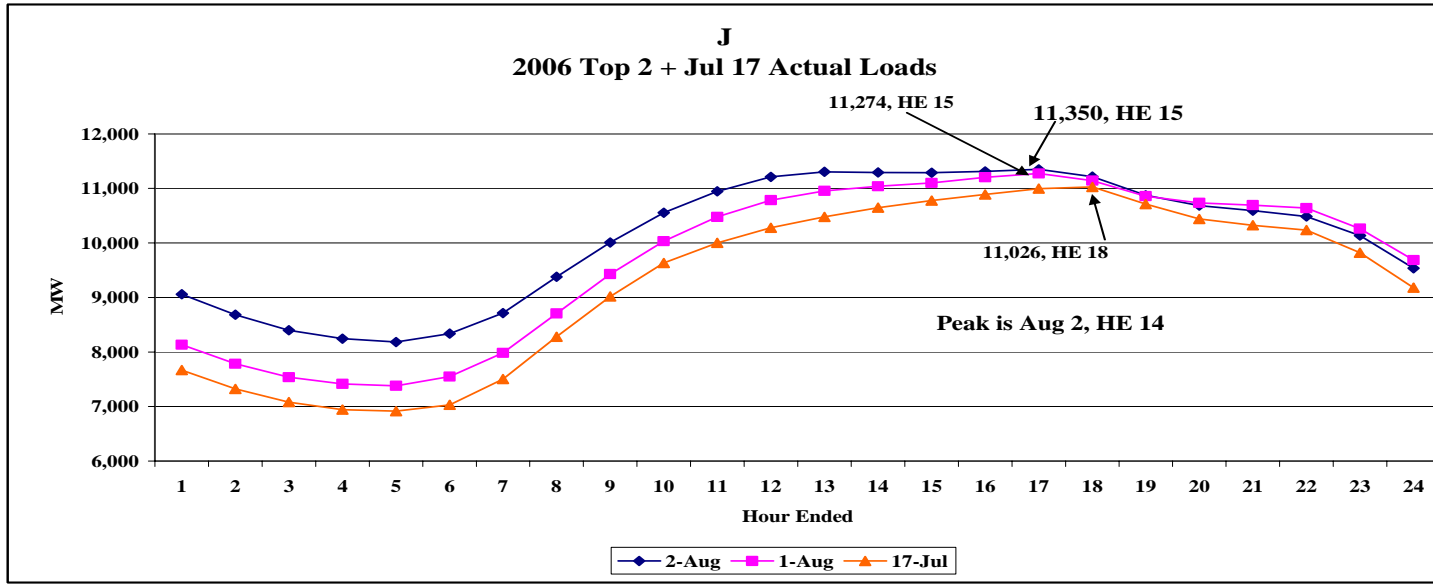
Daily CTHI - Summer 2006

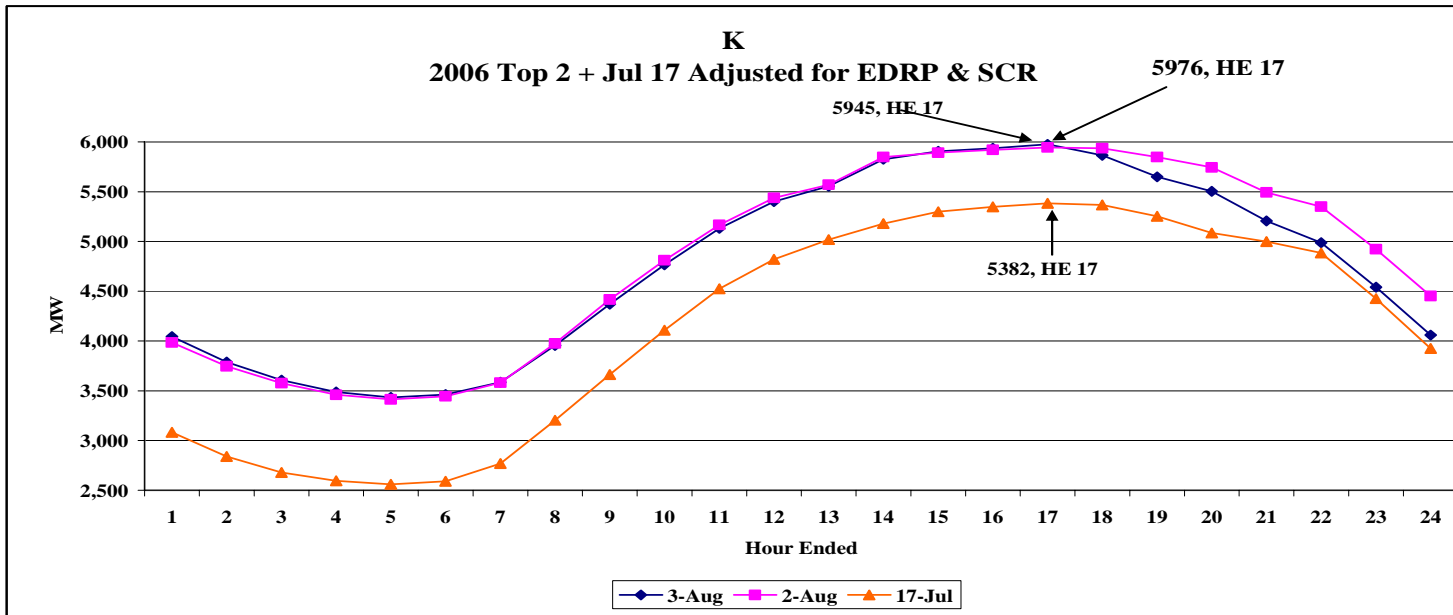
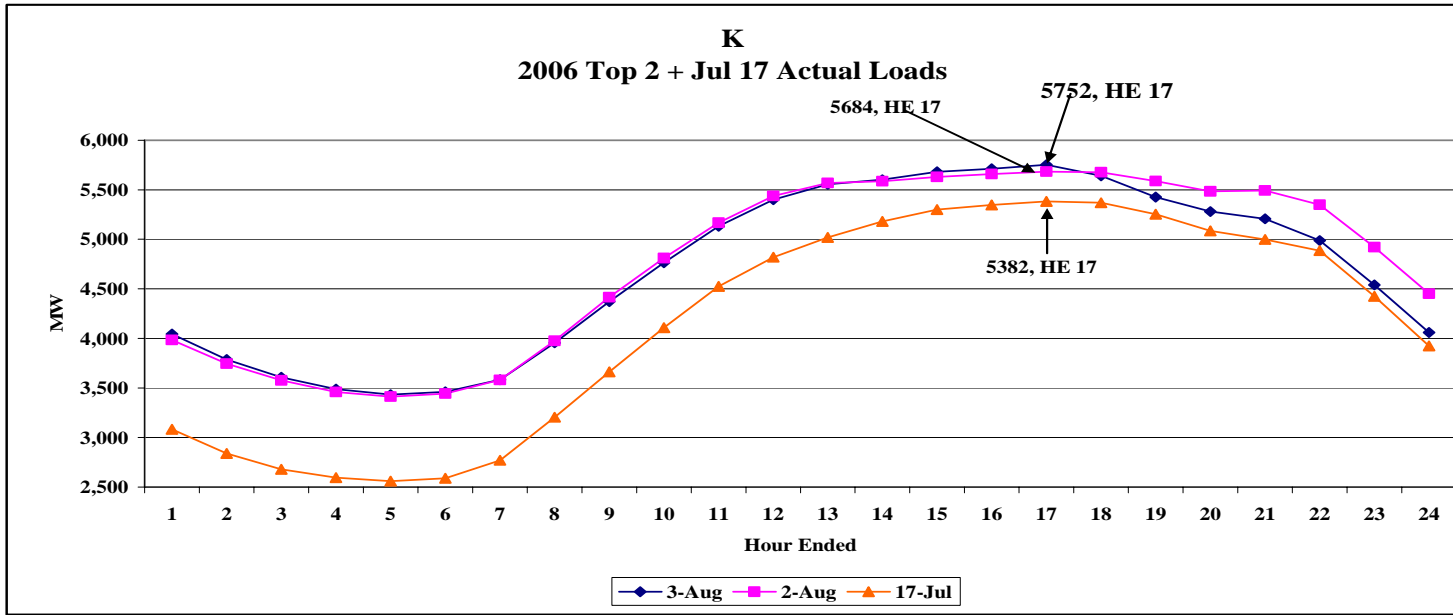


NYCA Peak Producing CTHIs









Top 20 Peak Loads - Actual

NYCA			
	Date	Peak	Hour Ended
1	8/2/2006	33,933	14
2	8/1/2006	33,881	17
3	7/17/2006	32,624	17
4	8/3/2006	32,489	15
5	7/18/2006	32,060	17
6	7/31/2006	31,266	17
7	7/27/2006	30,340	16
8	8/4/2006	29,814	17
9	8/7/2006	29,579	15
10	7/26/2006	29,542	16
11	7/28/2006	29,338	15
12	7/19/2006	29,184	17
13	7/21/2006	28,878	15
14	7/14/2006	28,680	17
15	7/11/2006	28,053	17
16	7/25/2006	28,035	16
17	6/22/2006	27,930	17
18	7/20/2006	27,886	17
19	6/19/2006	27,753	16
20	7/13/2006	27,470	17

J			
	Date	Peak	Hour Ended
1	8/2/2006	11,350	17
2	8/1/2006	11,274	17
3	8/3/2006	11,169	16
4	7/18/2006	11,058	17
5	7/17/2006	11,027	18
6	7/31/2006	10,531	17
7	8/4/2006	10,408	13
8	7/27/2006	10,315	17
9	7/28/2006	10,287	16
10	7/11/2006	10,098	17
11	8/7/2006	10,046	17
12	7/12/2006	9,852	14
13	6/19/2006	9,830	17
14	7/21/2006	9,794	14
15	7/26/2006	9,781	16
16	7/19/2006	9,767	17
17	6/22/2006	9,701	17
18	8/8/2006	9,600	17
19	7/13/2006	9,486	17
20	6/28/2006	9,474	17

K			
	Date	Peak	Hour Ended
1	8/3/2006	5,752	17
2	8/2/2006	5,684	17
3	8/1/2006	5,567	17
4	7/17/2006	5,382	17
5	7/18/2006	5,380	16
6	8/4/2006	5,157	14
7	7/31/2006	5,113	17
8	7/28/2006	5,021	16
9	7/27/2006	4,804	17
10	7/29/2006	4,750	17
11	7/30/2006	4,701	17
12	8/7/2006	4,682	16
13	7/19/2006	4,670	17
14	7/26/2006	4,637	17
15	8/8/2006	4,585	16
16	7/16/2006	4,580	18
17	8/5/2006	4,492	17
18	7/14/2006	4,467	17
19	7/21/2006	4,432	15
20	7/3/2006	4,414	17

2006 Peak Loads
 NYCA: 8/2, HE 3 PM
 J: 8/2, HE 5 PM
 K: 8/3, HE 5 PM

Top 20 Peak Loads - Adjusted for EDRP & SCR

NYCA			
	Date	Peak	Hour Ended
1	8/2/2006	34,909	15
2	8/1/2006	34,534	17
3	7/17/2006	32,624	17
4	8/3/2006	33,153	15
5	7/18/2006	32,718	17
6	7/31/2006	31,266	17
7	7/27/2006	30,340	16
8	8/4/2006	29,814	17
9	8/7/2006	29,579	15
10	7/26/2006	29,542	16
11	7/28/2006	29,338	15
12	7/19/2006	29,598	17
13	7/21/2006	28,878	15
14	7/14/2006	28,680	17
15	7/11/2006	28,053	17
16	7/25/2006	28,035	16
17	6/22/2006	27,930	17
18	7/20/2006	27,886	17
19	6/19/2006	27,753	16
20	7/13/2006	27,470	17

J			
	Date	Peak	Hour Ended
1	8/2/2006	11,779	17
2	8/1/2006	11,700	17
3	8/3/2006	11,608	16
4	7/18/2006	11,472	17
5	7/17/2006	11,027	18
6	7/31/2006	10,531	17
7	8/4/2006	10,408	13
8	7/27/2006	10,315	17
9	7/28/2006	10,287	16
10	7/11/2006	10,098	17
11	8/7/2006	10,046	17
12	7/12/2006	9,852	14
13	6/19/2006	9,830	17
14	7/21/2006	9,794	14
15	7/26/2006	9,781	16
16	7/19/2006	10,181	17
17	6/22/2006	9,701	17
18	8/8/2006	9,600	17
19	7/13/2006	9,486	17
20	6/28/2006	9,474	17

K			
	Date	Peak	Hour Ended
1	8/3/2006	5,976	17
2	8/2/2006	5,945	17
3	8/1/2006	5,794	17
4	7/17/2006	5,382	17
5	7/18/2006	5,605	16
6	8/4/2006	5,157	14
7	7/31/2006	5,113	17
8	7/28/2006	5,021	16
9	7/27/2006	4,804	17
10	7/29/2006	4,750	17
11	7/30/2006	4,701	17
12	8/7/2006	4,682	16
13	7/19/2006	4,670	17
14	7/26/2006	4,637	17
15	8/8/2006	4,585	16
16	7/16/2006	4,580	18
17	8/5/2006	4,492	17
18	7/14/2006	4,467	17
19	7/21/2006	4,432	15
20	7/3/2006	4,414	17