

NYISO CEO/COO Report

*Management Committee Meeting
April 25, 2012*

Agenda #3

Report Items

CEO Report

- Infrastructure Master Plan

COO Report

- Market Performance Highlights – For Information Only
- Operations Performance Metrics Monthly Report

Summary of 2012 Rate Schedule 1 Recoveries

2012 MWH (in Millions) Comparison: Budget vs. Estimated Actual						
Invoice Month	Budgeted MWH	Estimated Actual MWH	Monthly Differential MWH	Cumulative Differential MWH	Monthly \$ Impact	Cumulative \$ Impact
Jan	14.4	14.1	(0.3)	(0.3)	\$ (0.3)	\$ (0.3)
Feb	13.1	12.7	(0.4)	(0.7)	\$ (0.4)	\$ (0.6)
Mar	13.7	12.8	(0.9)	(1.6)	\$ (0.8)	\$ (1.4)
Apr	12.5	12.2	(0.3)	(1.9)	\$ (0.3)	\$ (1.7)
May	13.1	12.9	(0.2)	(2.1)	\$ (0.2)	\$ (1.9)
Jun	14.8	14.7	(0.1)	(2.2)	\$ (0.1)	\$ (2.0)
Jul	16.7	16.6	(0.1)	(2.3)	\$ (0.1)	\$ (2.0)
Aug	16.6	16.5	(0.1)	(2.4)	\$ (0.1)	\$ (2.1)
Sep	14.1	13.9	(0.2)	(2.6)	\$ (0.2)	\$ (2.3)
Oct	13.2	13.0	(0.2)	(2.8)	\$ (0.2)	\$ (2.5)
Nov	13.1	12.7	(0.4)	(3.2)	\$ (0.4)	\$ (2.8)
Dec	14.4	14.0	(0.4)	(3.6)	\$ (0.4)	\$ (3.2)
<i>Funds Remaining from 2011 Budget Cycle:</i>						\$ 0.3
<i>Net Cumulative \$ Impact :</i>						\$ (2.9)
Total	169.7	166.1	(3.6)			

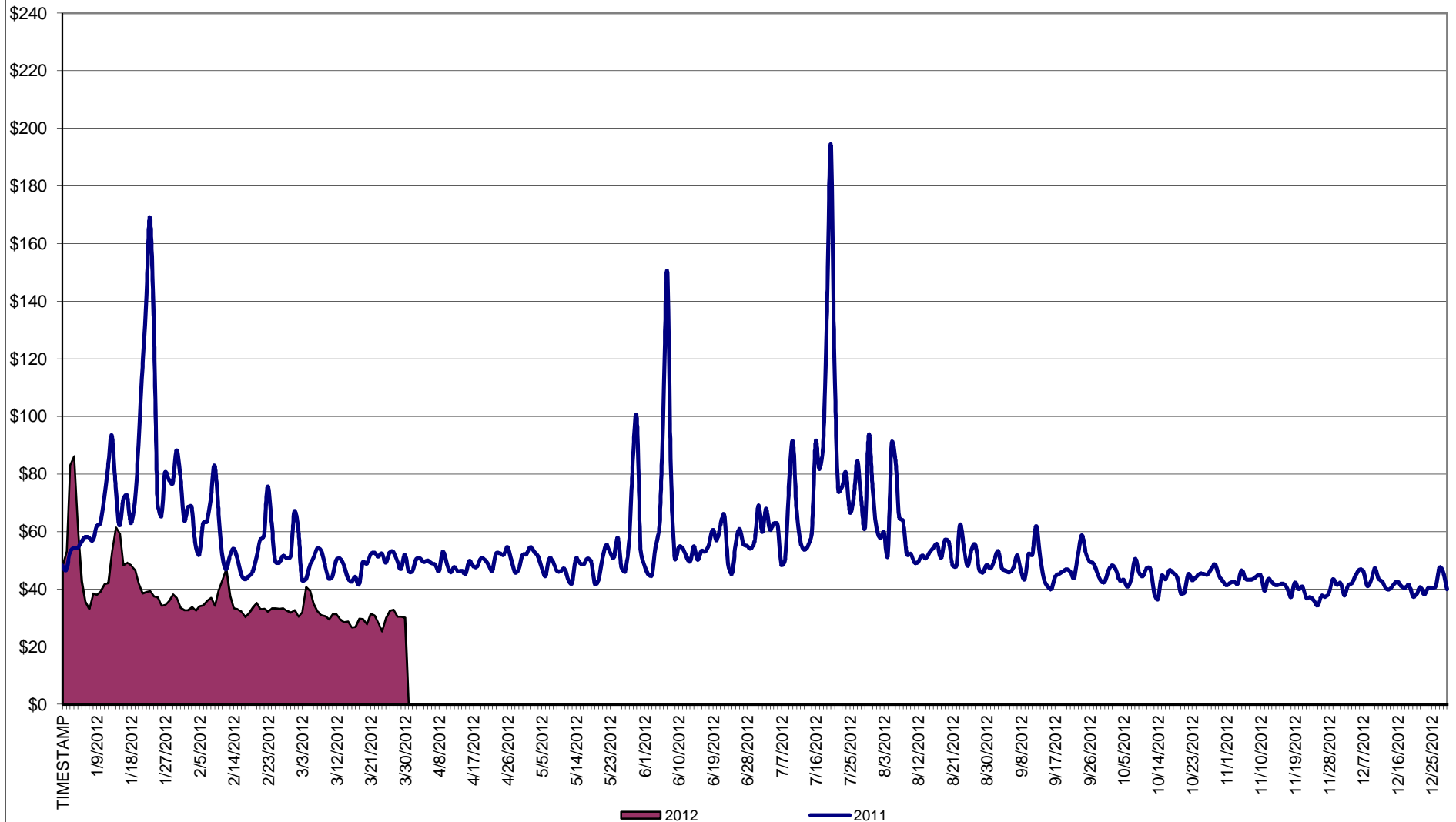
As of April 14th, April RS1 recoveries are estimated to be approximately \$0.4M under budget.

April – December 2012 MWH represents current projections of 2012 load and RS1 recoveries.

Market Performance Highlights for March 2012

- **LBMP for March is \$28.98/MWh, down from \$32.44/MWh in February 2012.**
 - Day Ahead and Real Time Load Weighted LBMPs are down compared to February 2012.
- **Average monthly year-to-date cost of \$37.91/MWh, a decrease from the previous month, \$41.05/MWh.**
- **Average daily sendout is 407 GWh/day in March; down from 431 GWh/day in February 2012 and lower than 422 GWh/day in March 2011.**
- **Natural gas is down while distillate prices are up compared to the previous month.**
 - Natural Gas is \$2.34/MMBtu, down from \$3.15/MMBtu in February.
 - Kerosene is \$24.65/MMBtu, up from \$24.43/MMBtu in February.
 - No. 2 Fuel Oil is \$22.91/MMBtu, up from \$22.75/MMBtu in February.
 - No. 6 Fuel Oil is \$21.19/MMBtu, up from \$19.86/MMBtu in February.
- **Uplift per MWh is lower compared to the previous month.**
 - Uplift (not including NYISO cost of operations) is -\$0.03/MWh, lower than \$0.13/MWh in February.
 - The local Reliability Share is \$0.16/MWh.
 - The other Share is -\$0.19/MWh.
 - TSA \$ per NYC MWh is \$0.00/MWh.
 - Total uplift (Schedule 1 components including NYISO Cost of Operations) is lower compared to February.

Daily NYISO Average Cost/MWh (Energy & Ancillary Services)*
 2011 Annual Average \$56.55/MWh
 March 2011YTD Average \$62.36MWh
 March 2012YTD Average \$37.91/MWh



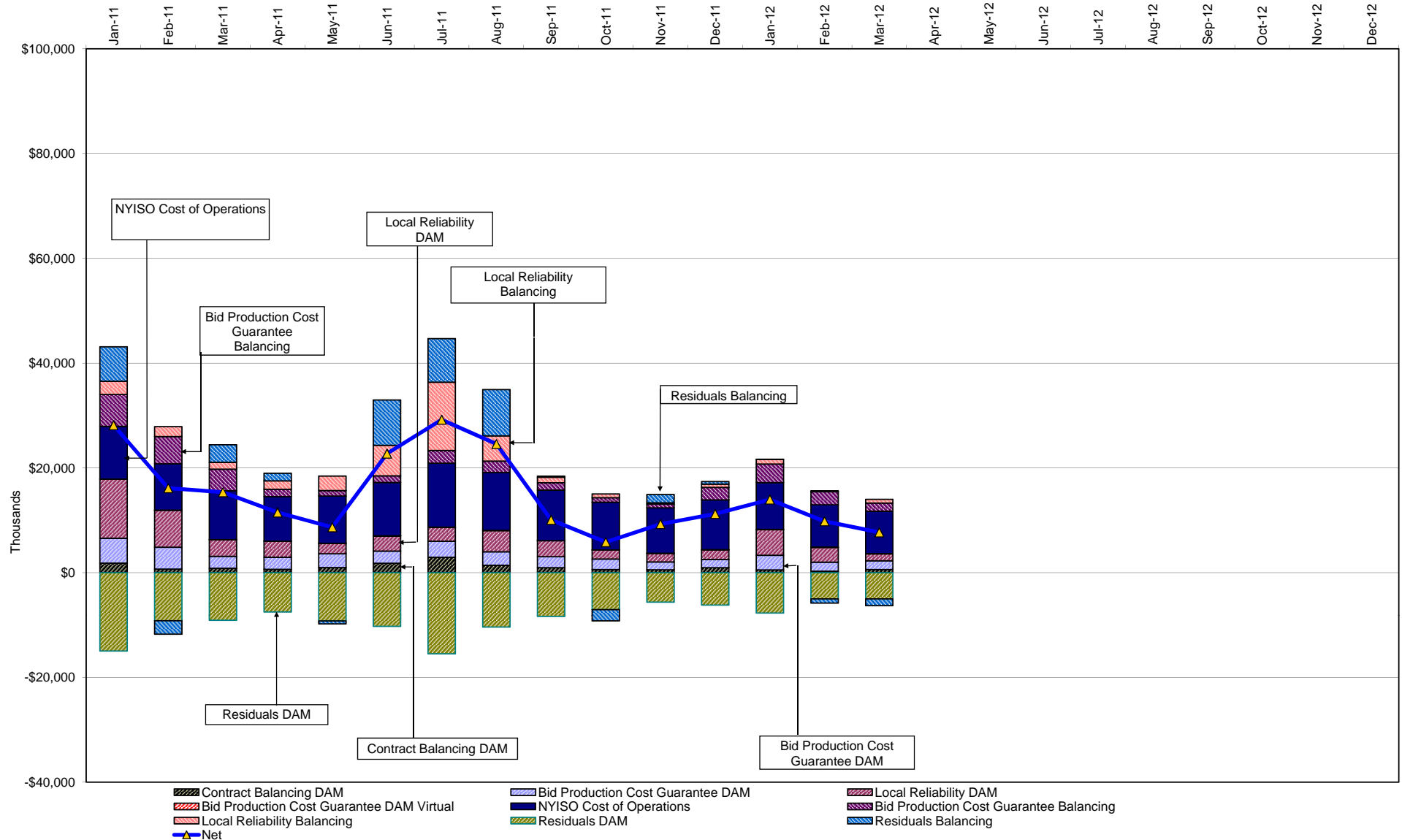
* Excludes ICAP payments.

NYISO Average Cost/MWh (Energy and Ancillary Services) *
from the LBMP Customer point of view

2012	<u>January</u>	<u>February</u>	<u>March</u>	<u>April</u>	<u>May</u>	<u>June</u>	<u>July</u>	<u>August</u>	<u>September</u>	<u>October</u>	<u>November</u>	<u>December</u>
LBMP	44.00	32.44	28.98									
NTAC	0.85	0.80	0.68									
Reserve	0.35	0.25	0.38									
Regulation	0.10	0.08	0.13									
NYISO Cost of Operations	0.64	0.64	0.64									
Uplift	0.36	0.13	(0.03)									
Uplift: Local Reliability Share	0.41	0.24	0.16									
Uplift: Other Share	(0.05)	(0.10)	(0.19)									
Voltage Support and Black Start	0.37	0.37	0.37									
Avg Monthly Cost	46.67	34.72	31.15									
 Avg YTD Cost	46.67	41.05	37.91									
 TSA \$ per NYC MWh	0.00	0.00	0.00									
 2011	<u>January</u>	<u>February</u>	<u>March</u>	<u>April</u>	<u>May</u>	<u>June</u>	<u>July</u>	<u>August</u>	<u>September</u>	<u>October</u>	<u>November</u>	<u>December</u>
LBMP	74.91	55.60	46.98	46.44	48.49	60.33	75.76	56.04	46.86	42.48	38.97	39.73
NTAC	0.62	0.75	0.86	0.81	1.13	1.22	0.66	0.60	0.43	0.56	0.62	0.69
Reserve	0.44	0.50	0.41	0.43	0.48	0.28	0.28	0.13	0.25	0.41	0.26	0.28
Regulation	0.20	0.18	0.15	0.12	0.10	0.15	0.12	0.09	0.08	0.09	0.08	0.09
NYISO Cost of Operations	0.70	0.70	0.70	0.70	0.70	0.70	0.70	0.70	0.70	0.70	0.70	0.70
Uplift	1.26	0.58	0.45	0.25	(0.02)	0.32	1.53	1.22	0.17	(0.21)	0.11	0.12
Uplift: Local Reliability Share	0.95	0.71	0.33	0.38	0.36	0.82	1.17	0.87	0.43	0.23	0.19	0.18
Uplift: Other Share	0.31	(0.12)	0.12	(0.14)	(0.38)	(0.50)	0.36	0.35	(0.26)	(0.44)	(0.08)	(0.06)
Voltage Support and Black Start	0.37	0.37	0.37	0.37	0.37	0.37	0.37	0.37	0.37	0.37	0.37	0.37
Avg Monthly Cost	78.50	58.69	49.92	49.12	51.24	64.19	79.30	59.13	48.71	44.36	41.05	41.98
 Avg YTD Cost	78.50	68.82	62.36	59.15	57.53	58.81	62.86	62.29	60.78	59.29	57.86	56.55
 TSA \$ per NYC MWh	0.00	0.00	0.00	0.25	0.00	2.90	0.70	2.77	0.28	0.01	0.00	0.00

* Excludes ICAP payments.

NYISO Dollar Flows - Uplift- OATT Schedule 1 components - Data through March 31, 2012



DAM Contract Balancing amounts are for payments made to generating units to make them whole for being dispatched below their Day-Ahead schedule, as a result of out-of-merit dispatches.

DAM Bid Production Cost Guarantees for Virtual Transactions are included in the chart and are shown from the inception of Virtual Transactions. These values are small and cannot be identified on the chart.

DAM residuals consist of both energy and loss revenue collections and payments. By design, there is a net over collection of revenues due to the difference between the marginal losses paid to generation and the average losses charged to loads.

NYISO Markets Transactions

2012	<u>January</u>	<u>February</u>	<u>March</u>	<u>April</u>	<u>May</u>	<u>June</u>	<u>July</u>	<u>August</u>	<u>September</u>	<u>October</u>	<u>November</u>	<u>December</u>
<u>Day Ahead Market MWh</u>	14,877,279	13,473,786	13,590,456									
DAM LSE Internal LBMP Energy Sales	58%	57%	58%									
DAM External TC LBMP Energy Sales	1%	1%	0%									
DAM Bilateral - Internal Bilaterals	38%	40%	40%									
DAM Bilateral - Import/Non-LBMP Market Bilaterals	0%	0%	0%									
DAM Bilateral - Export/Non-LBMP Market Bilaterals	1%	2%	2%									
DAM Bilateral - Wheel Through Bilaterals	1%	0%	1%									
<u>Balancing Energy Market MWh</u>	-878,258	-814,169	-896,046									
Balancing Energy LSE Internal LBMP Energy Sales	-110%	-111%	-110%									
Balancing Energy External TC LBMP Energy Sales	9%	7%	7%									
Balancing Energy Bilateral - Internal Bilaterals	1%	1%	1%									
Balancing Energy Bilateral - Import/Non-LBMP Market Bilaterals	0%	0%	0%									
Balancing Energy Bilateral - Export/Non-LBMP Market Bilaterals	4%	3%	3%									
Balancing Energy Bilateral - Wheel Through Bilaterals	-3%	0%	-1%									
<u>Transactions Summary</u>												
LBMP	57%	56%	55%									
Internal Bilaterals	41%	42%	43%									
Import Bilaterals	0%	0%	0%									
Export Bilaterals	2%	2%	2%									
Wheels Through	1%	0%	1%									
<u>Market Share of Total Load</u>												
Day Ahead Market	106.3%	106.4%	107.1%									
Balancing Energy +	-6.3%	-6.4%	-7.1%									
Total MWh	13,999,021	12,659,617	12,694,410									
Average Daily Energy Sendout/Month GWh	443	431	407									

2011	<u>January</u>	<u>February</u>	<u>March</u>	<u>April</u>	<u>May</u>	<u>June</u>	<u>July</u>	<u>August</u>	<u>September</u>	<u>October</u>	<u>November</u>	<u>December</u>
<u>Day Ahead Market MWh</u>	14,146,283	12,514,435	13,164,026	12,191,562	12,809,240	14,520,490	17,296,367	15,872,137	14,052,940	13,263,167	12,710,654	14,300,553
DAM LSE Internal LBMP Energy Sales	49%	54%	53%	55%	55%	57%	60%	62%	59%	54%	55%	59%
DAM External TC LBMP Energy Sales	1%	1%	2%	2%	1%	1%	2%	1%	1%	4%	2%	1%
DAM Bilateral - Internal Bilaterals	42%	43%	43%	41%	41%	39%	36%	35%	39%	41%	41%	37%
DAM Bilateral - Import/Non-LBMP Market Bilaterals	5%	0%	0%	0%	0%	0%	0%	0%	0%	0%	0%	0%
DAM Bilateral - Export/Non-LBMP Market Bilaterals	1%	1%	2%	2%	2%	1%	1%	1%	1%	2%	2%	1%
DAM Bilateral - Wheel Through Bilaterals	1%	1%	1%	0%	1%	1%	1%	1%	1%	0%	0%	1%
<u>Balancing Energy Market MWh</u>	311,996	210,141	250,346	35,939	192,443	44,238	221,521	-31,814	-204,604	-204,312	-281,379	-688,007
Balancing Energy LSE Internal LBMP Energy Sales	28%	24%	39%	-226%	40%	-141%	29%	-372%	-147%	-181%	-129%	-115%
Balancing Energy External TC LBMP Energy Sales	48%	50%	50%	197%	39%	271%	77%	328%	53%	59%	21%	13%
Balancing Energy Bilateral - Internal Bilaterals	15%	7%	8%	47%	14%	37%	0%	-1%	5%	11%	0%	0%
Balancing Energy Bilateral - Import/Non-LBMP Market Bilaterals	0%	0%	0%	0%	0%	0%	0%	0%	0%	0%	0%	0%
Balancing Energy Bilateral - Export/Non-LBMP Market Bilaterals	6%	14%	13%	83%	10%	32%	6%	39%	8%	10%	10%	4%
Balancing Energy Bilateral - Wheel Through Bilaterals	3%	5%	-10%	-1%	-2%	-100%	-12%	-94%	-18%	1%	-2%	-2%
<u>Transactions Summary</u>												
LBMP	51%	55%	55%	57%	57%	59%	63%	63%	59%	56%	56%	58%
Internal Bilaterals	42%	42%	42%	41%	41%	39%	36%	36%	39%	42%	42%	39%
Import Bilaterals	5%	0%	0%	0%	0%	0%	0%	0%	0%	0%	0%	0%
Export Bilaterals	2%	2%	2%	2%	2%	1%	1%	1%	1%	2%	2%	2%
Wheels Through	1%	1%	1%	0%	1%	1%	1%	1%	0%	0%	0%	1%
<u>Market Share of Total Load</u>												
Day Ahead Market	97.8%	98.3%	98.1%	99.7%	98.5%	99.7%	98.7%	100.2%	101.5%	101.6%	102.3%	105.1%
Balancing Energy +	2.2%	1.7%	1.9%	0.3%	1.5%	0.3%	1.3%	-0.2%	-1.5%	-1.6%	-2.3%	-5.1%
Total MWh	14,458,279	12,724,575	13,414,372	12,227,501	13,001,683	14,564,728	17,517,888	15,840,323	13,848,336	13,058,855	12,429,275	13,612,546
Average Daily Energy Sendout/Month GWh	457	447	422	398	411	479	555	505	456	403	408	430

+ Balancing Energy: Load(MW) purchased at Real Time LBMP.

* The signs for the detail section intuitively reflect the direction of power flow eliminating the use of double negatives when Balancing Energy is negative.

Notes: Percent totals may not equal 100% due to rounding.
Virtual Transactions are not reflected in this chart.

NYISO Markets 2012 Energy Statistics

	<u>January</u>	<u>February</u>	<u>March</u>	<u>April</u>	<u>May</u>	<u>June</u>	<u>July</u>	<u>August</u>	<u>September</u>	<u>October</u>	<u>November</u>	<u>December</u>
<u>DAY AHEAD LBMP</u>												
Price *	\$40.91	\$31.15	\$27.44									
Standard Deviation	\$15.62	\$6.23	\$7.00									
Load Weighted Price **	\$42.20	\$31.73	\$28.25									
<u>RTC LBMP</u>												
Price *	\$37.93	\$30.31	\$28.15									
Standard Deviation	\$23.43	\$7.26	\$22.87									
Load Weighted Price **	\$39.19	\$30.75	\$28.93									
<u>REAL TIME LBMP</u>												
Price *	\$37.35	\$30.54	\$28.47									
Standard Deviation	\$23.75	\$9.77	\$20.94									
Load Weighted Price **	\$38.88	\$31.14	\$29.44									
Average Daily Energy Sendout/Month GWh	443	431	407									

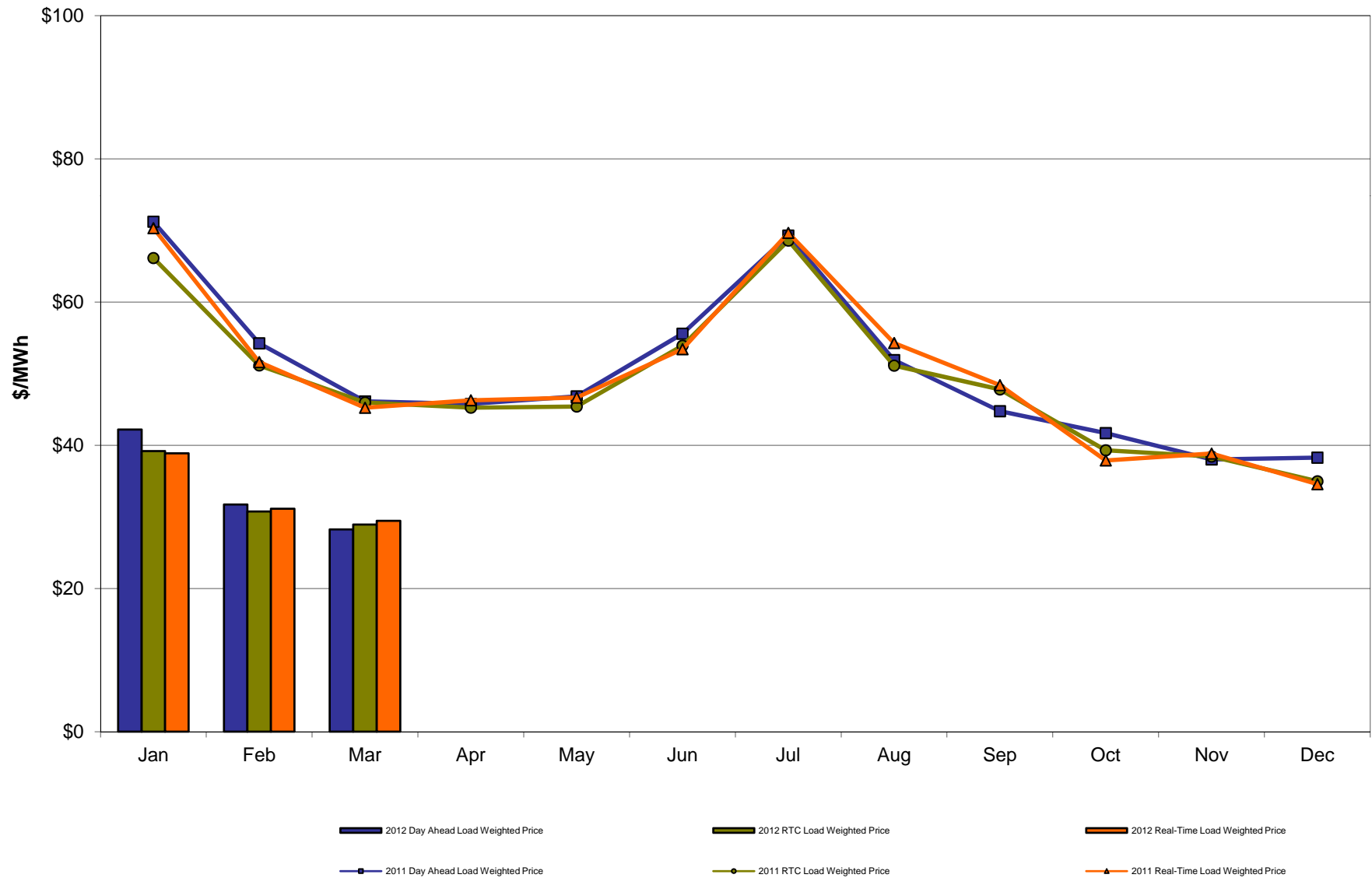
NYISO Markets 2011 Energy Statistics

	<u>January</u>	<u>February</u>	<u>March</u>	<u>April</u>	<u>May</u>	<u>June</u>	<u>July</u>	<u>August</u>	<u>September</u>	<u>October</u>	<u>November</u>	<u>December</u>
<u>DAY AHEAD LBMP</u>												
Price *	\$69.03	\$52.87	\$45.20	\$44.80	\$45.20	\$52.26	\$64.60	\$49.59	\$43.28	\$40.38	\$37.12	\$37.31
Standard Deviation	\$30.78	\$14.77	\$9.06	\$8.22	\$11.77	\$26.24	\$34.99	\$16.62	\$10.26	\$9.30	\$7.64	\$9.13
Load Weighted Price **	\$71.22	\$54.24	\$46.13	\$45.77	\$46.83	\$55.58	\$69.28	\$51.90	\$44.76	\$41.70	\$38.02	\$38.27
<u>RTC LBMP</u>												
Price *	\$64.48	\$50.15	\$45.13	\$44.32	\$43.69	\$50.47	\$63.42	\$48.47	\$46.02	\$38.44	\$37.43	\$34.00
Standard Deviation	\$39.41	\$18.83	\$18.96	\$15.44	\$25.19	\$46.41	\$82.29	\$59.95	\$25.18	\$15.45	\$17.55	\$15.60
Load Weighted Price **	\$66.15	\$51.15	\$45.98	\$45.25	\$45.41	\$53.91	\$68.58	\$51.12	\$47.80	\$39.30	\$38.43	\$34.97
<u>REAL TIME LBMP</u>												
Price *	\$67.92	\$50.26	\$44.22	\$45.20	\$44.26	\$48.68	\$62.96	\$49.39	\$45.92	\$36.91	\$37.67	\$33.50
Standard Deviation	\$58.47	\$22.39	\$17.41	\$19.98	\$26.27	\$44.88	\$64.83	\$62.04	\$26.88	\$13.65	\$19.42	\$14.12
Load Weighted Price **	\$70.32	\$51.61	\$45.24	\$46.28	\$46.66	\$53.42	\$69.66	\$54.28	\$48.40	\$37.88	\$38.84	\$34.57
Average Daily Energy Sendout/Month GWh	457	447	422	398	411	479	555	505	456	402	408	430

* Average zonal load weighted prices.

** Average zonal load weighted prices, load weighted in each hour.

NYISO Monthly Average Internal LBMPs 2011- 2012

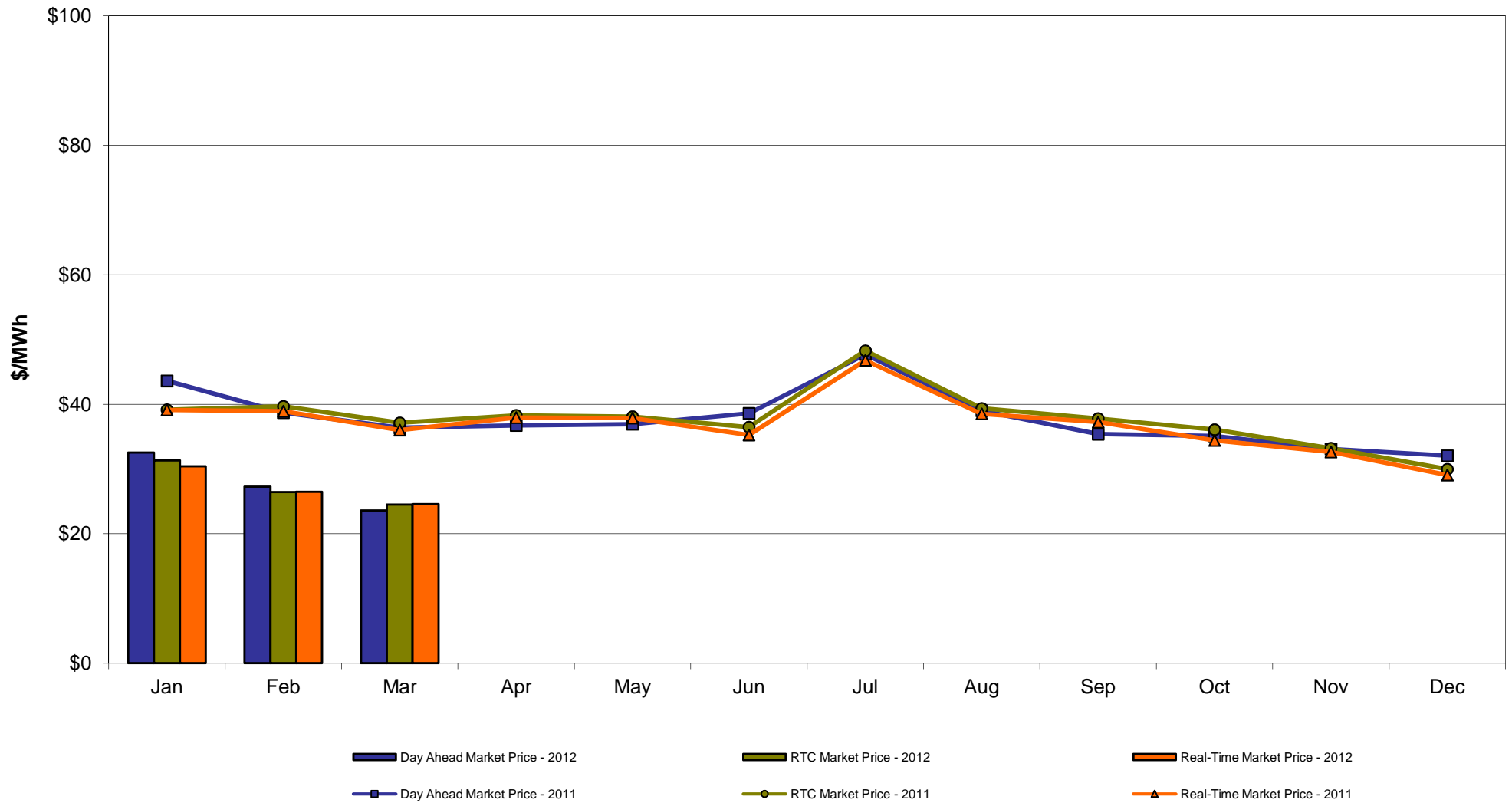


March 2012 Zonal LBMP Statistics for NYISO (\$/MWh)

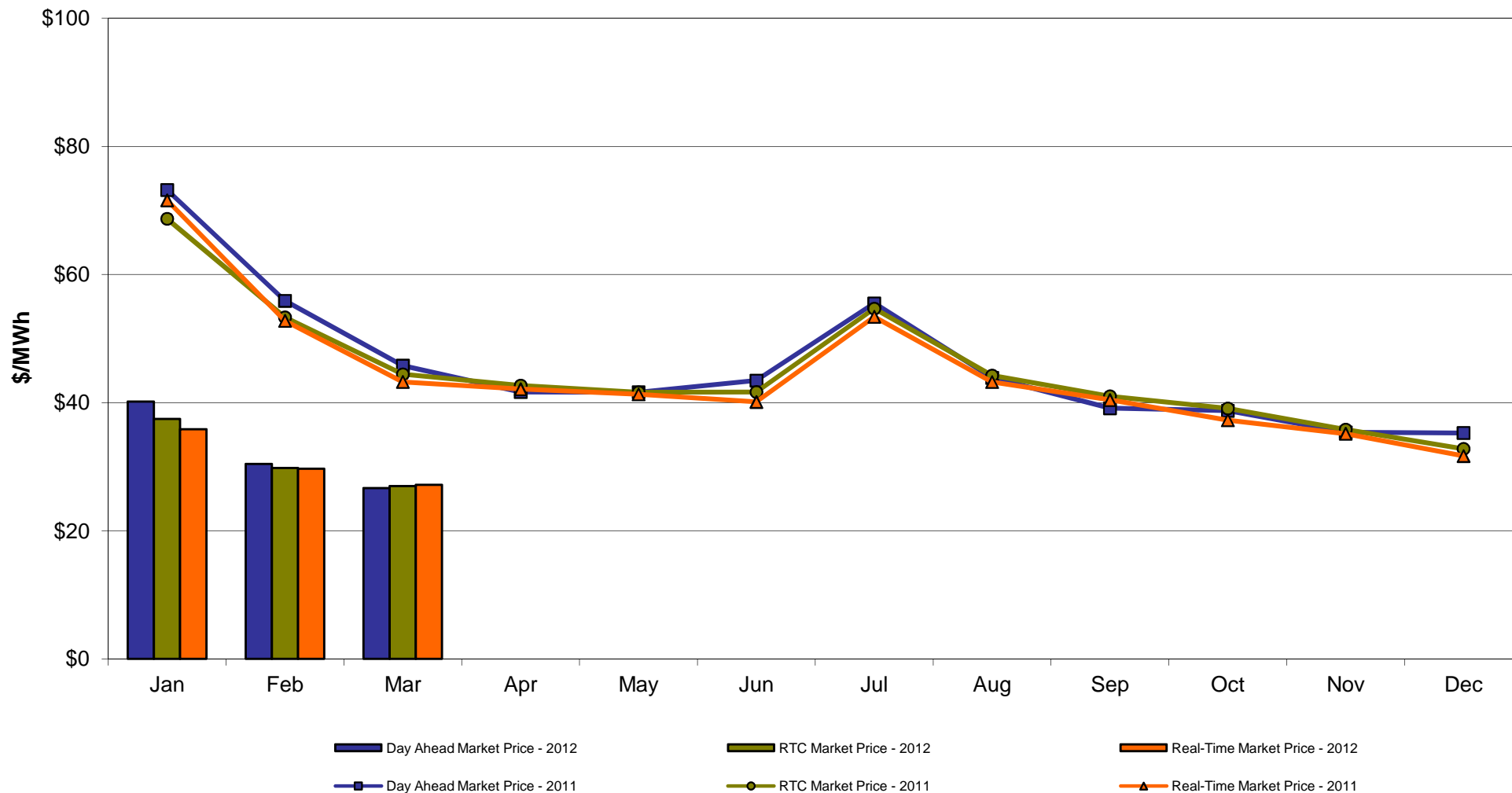
	<u>WEST</u> <u>Zone A</u>	<u>GENESEE</u> <u>Zone B</u>	<u>NORTH</u> <u>Zone D</u>	<u>CENTRAL</u> <u>Zone C</u>	<u>MOHAWK</u> <u>VALLEY</u> <u>Zone E</u>	<u>CAPITAL</u> <u>Zone F</u>	<u>HUDSON</u> <u>VALLEY</u> <u>Zone G</u>	<u>MILLWOOD</u> <u>Zone H</u>	<u>DUNWOODIE</u> <u>Zone I</u>	<u>NEW YORK</u> <u>CITY</u> <u>Zone J</u>	<u>LONG</u> <u>ISLAND</u> <u>Zone K</u>
<u>DAY AHEAD LBMP</u>											
Unweighted Price *	23.57	24.12	23.62	24.66	25.25	26.65	27.84	27.87	27.89	29.67	30.22
Standard Deviation	5.80	6.04	5.89	6.18	6.45	6.96	7.21	7.26	7.24	7.96	8.14
<u>RTC LBMP</u>											
Unweighted Price *	24.48	24.92	23.79	25.44	25.86	26.96	27.75	27.76	27.75	30.65	31.08
Standard Deviation	21.34	21.47	20.14	21.78	22.12	22.13	22.77	22.75	22.69	26.61	27.23
<u>REAL TIME LBMP</u>											
Unweighted Price *	24.59	25.02	23.89	25.54	25.95	27.19	27.95	27.96	27.95	30.71	33.23
Standard Deviation	18.45	18.72	17.80	19.00	19.26	19.37	20.00	19.99	19.95	23.71	38.74
	<u>ONTARIO</u> <u>IESO</u> <u>Zone O</u>	<u>HYDRO</u> <u>QUEBEC</u> <u>(Wheel)</u> <u>Zone M</u>	<u>HYDRO</u> <u>QUEBEC</u> <u>(Import/Export)</u> <u>Zone M</u>	<u>PJM</u> <u>Zone P</u>	<u>NEW</u> <u>ENGLAND</u> <u>Zone N</u>	<u>CROSS</u> <u>SOUND</u> <u>CABLE</u> <u>Controllable</u> <u>Line</u>	<u>NORTHPORT-</u> <u>NORWALK</u> <u>Controllable</u> <u>Line</u>	<u>NEPTUNE</u> <u>Controllable</u> <u>Line</u>	<u>LINDEN VFT</u> <u>Controllable</u> <u>Line</u>	<u>Dennison</u> <u>Controllable</u> <u>Line</u>	
<u>DAY AHEAD LBMP</u>											
Unweighted Price *	23.18	23.80	22.79	26.52	26.86	29.70	28.77	29.29	29.33	23.23	
Standard Deviation	5.47	5.76	5.34	6.51	6.77	7.88	7.14	7.44	7.52	5.56	
<u>RTC LBMP</u>											
Unweighted Price *	22.37	22.66	22.03	24.93	25.28	28.49	28.24	28.62	27.24	22.06	
Standard Deviation	8.69	8.74	7.46	9.51	9.38	17.18	17.11	17.19	13.85	8.29	
<u>REAL TIME LBMP</u>											
Unweighted Price *	22.45	24.10	22.73	26.22	26.90	31.89	31.39	31.83	29.43	23.05	
Standard Deviation	11.59	17.07	11.01	18.12	18.03	38.00	37.48	37.10	23.11	15.80	

* Straight LBMP averages

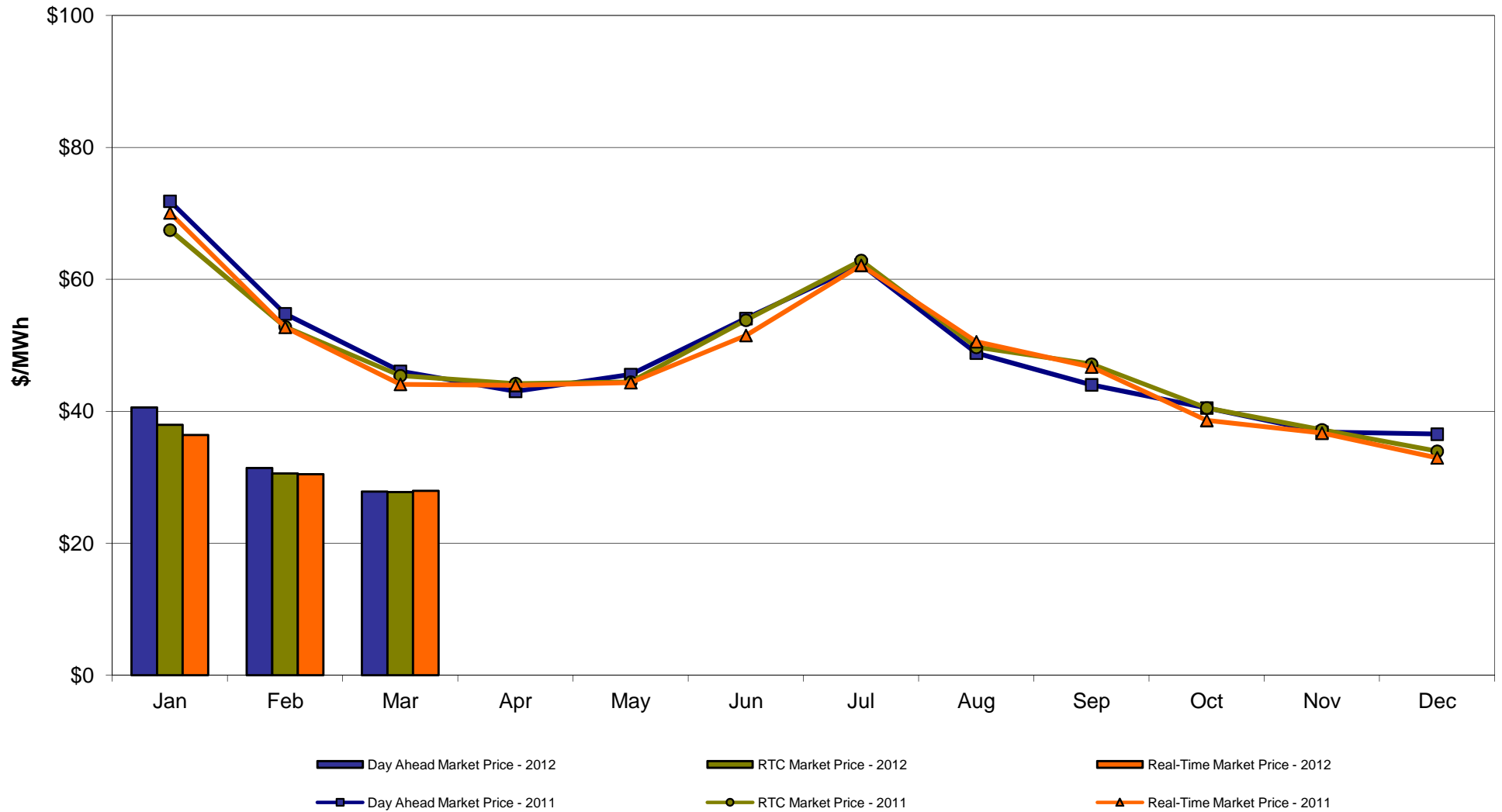
West Zone A **Monthly Average LBMP Prices 2011 - 2012**



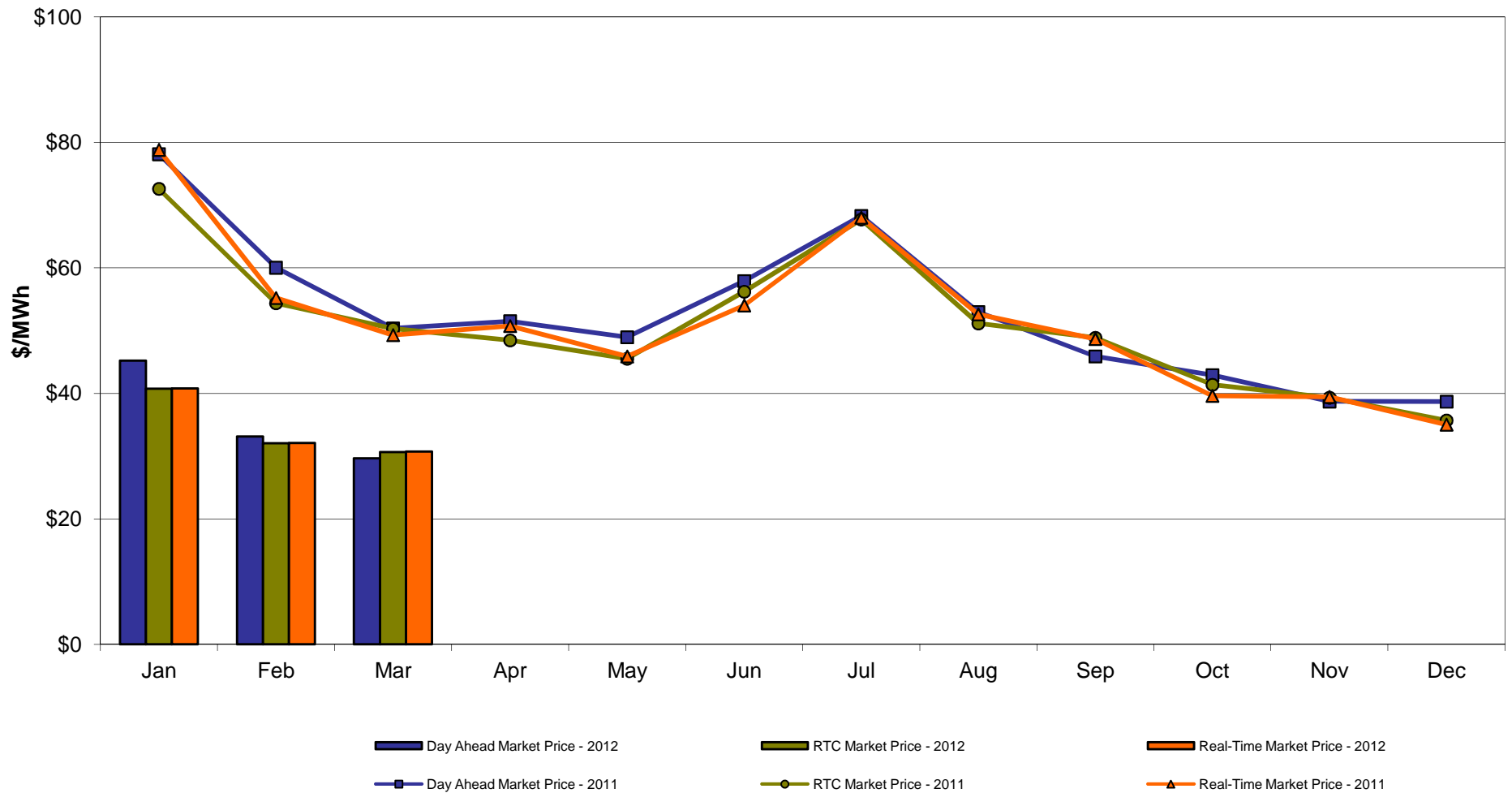
Capital Zone F **Monthly Average LBMP Prices 2011 - 2012**



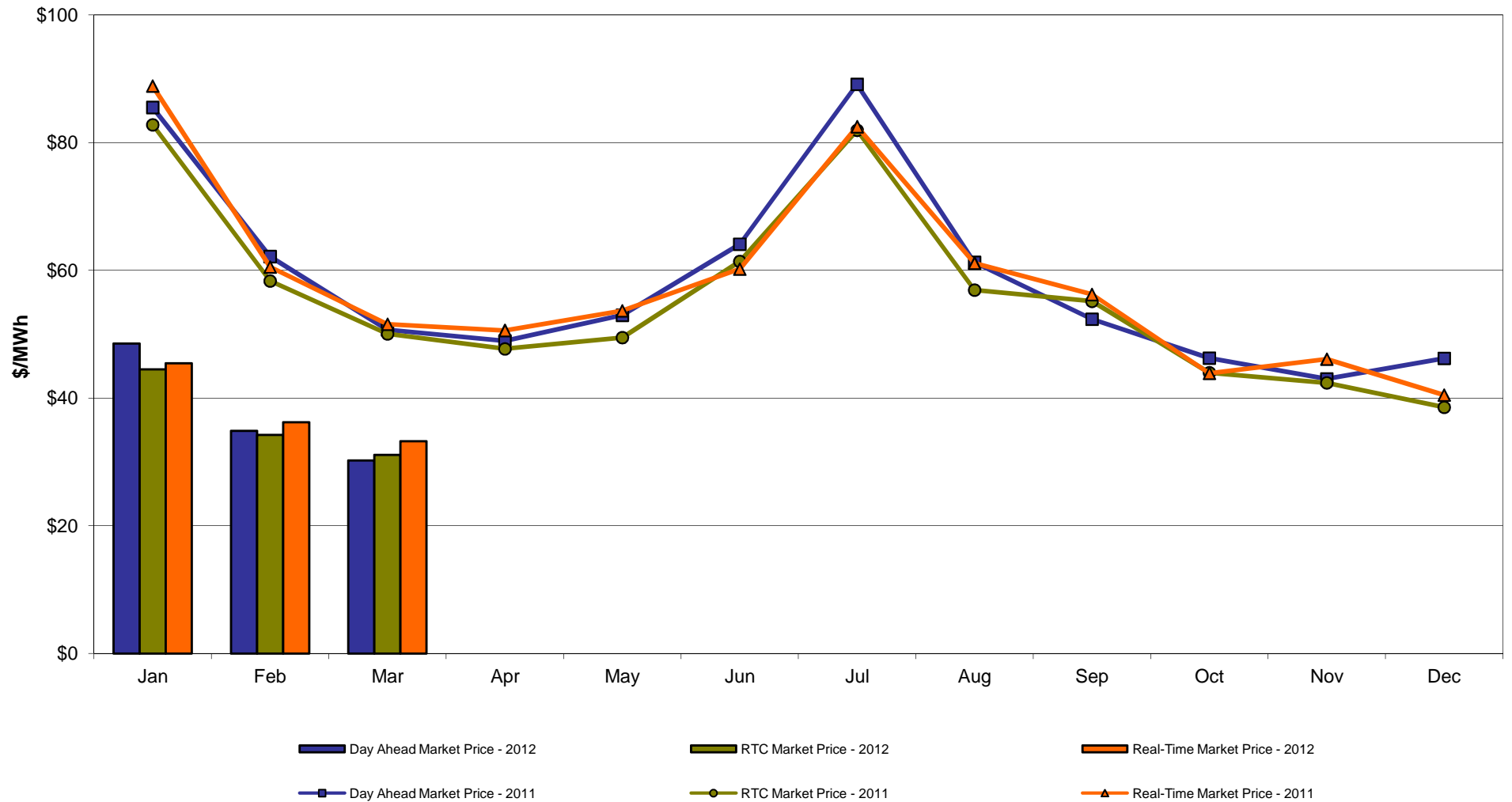
Hudson Valley Zone G Monthly Average LBMP Prices 2011 - 2012



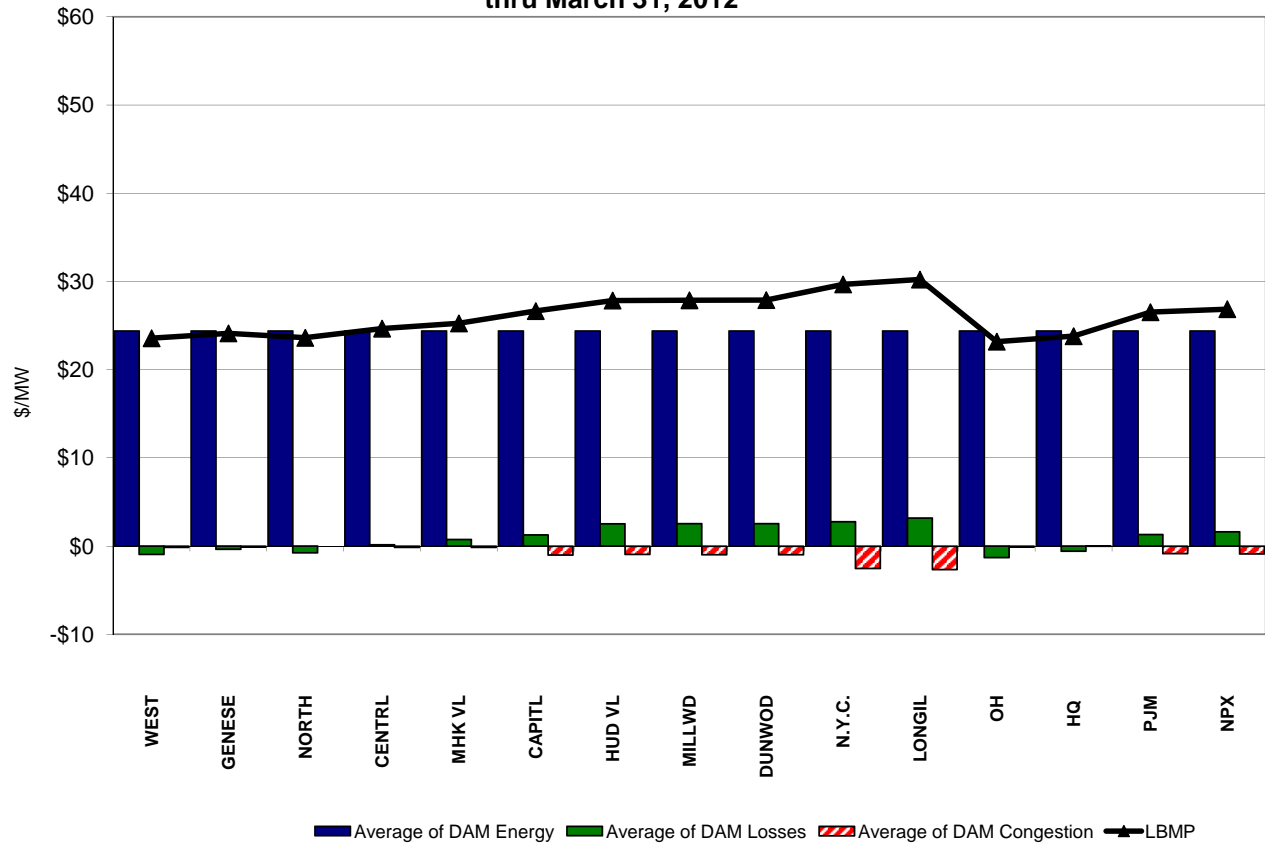
NYC Zone J Monthly Average LBMP Prices 2011 - 2012



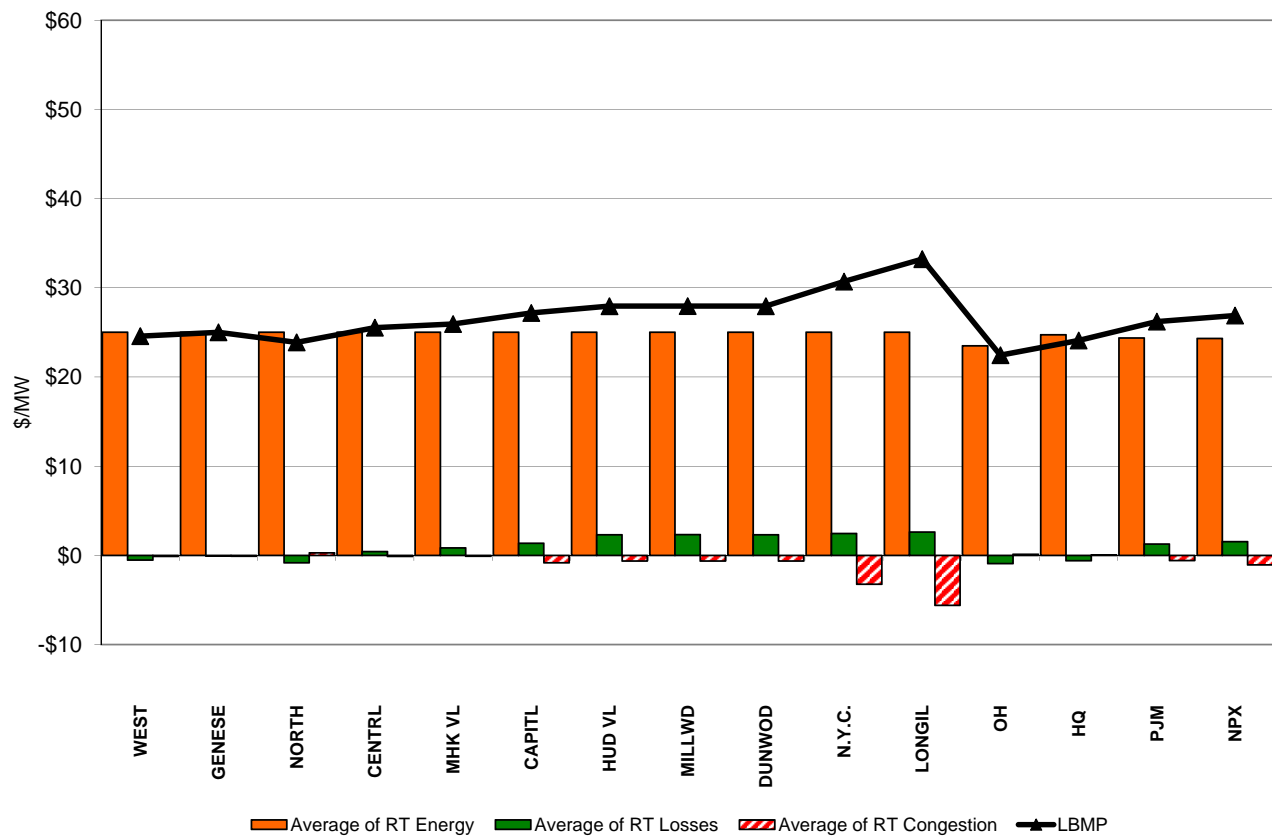
Long Island Zone K Monthly Average LBMP Prices 2011 - 2012



**DAM Zonal Unweighted Monthly Average LBMP Components
thru March 31, 2012**

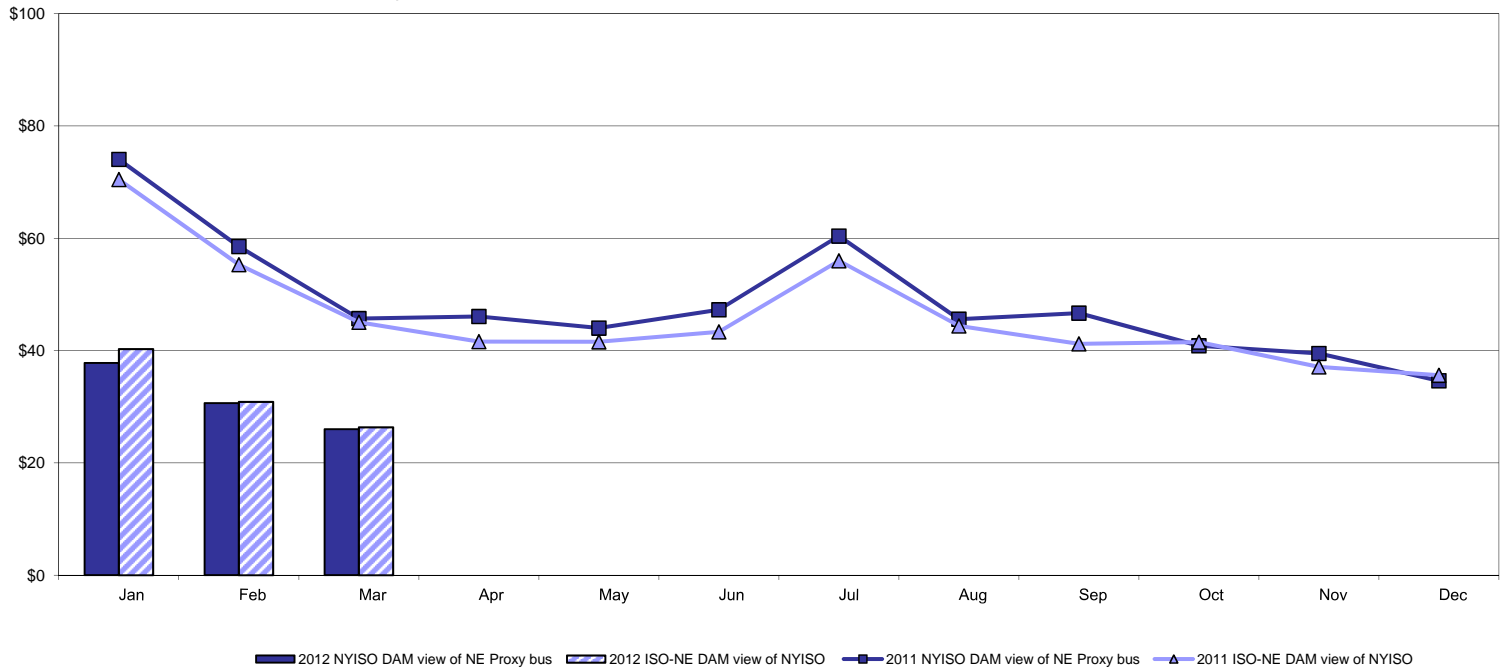


**RT Zonal Unweighted Monthly Average LBMP Components
thru March 31 2012**

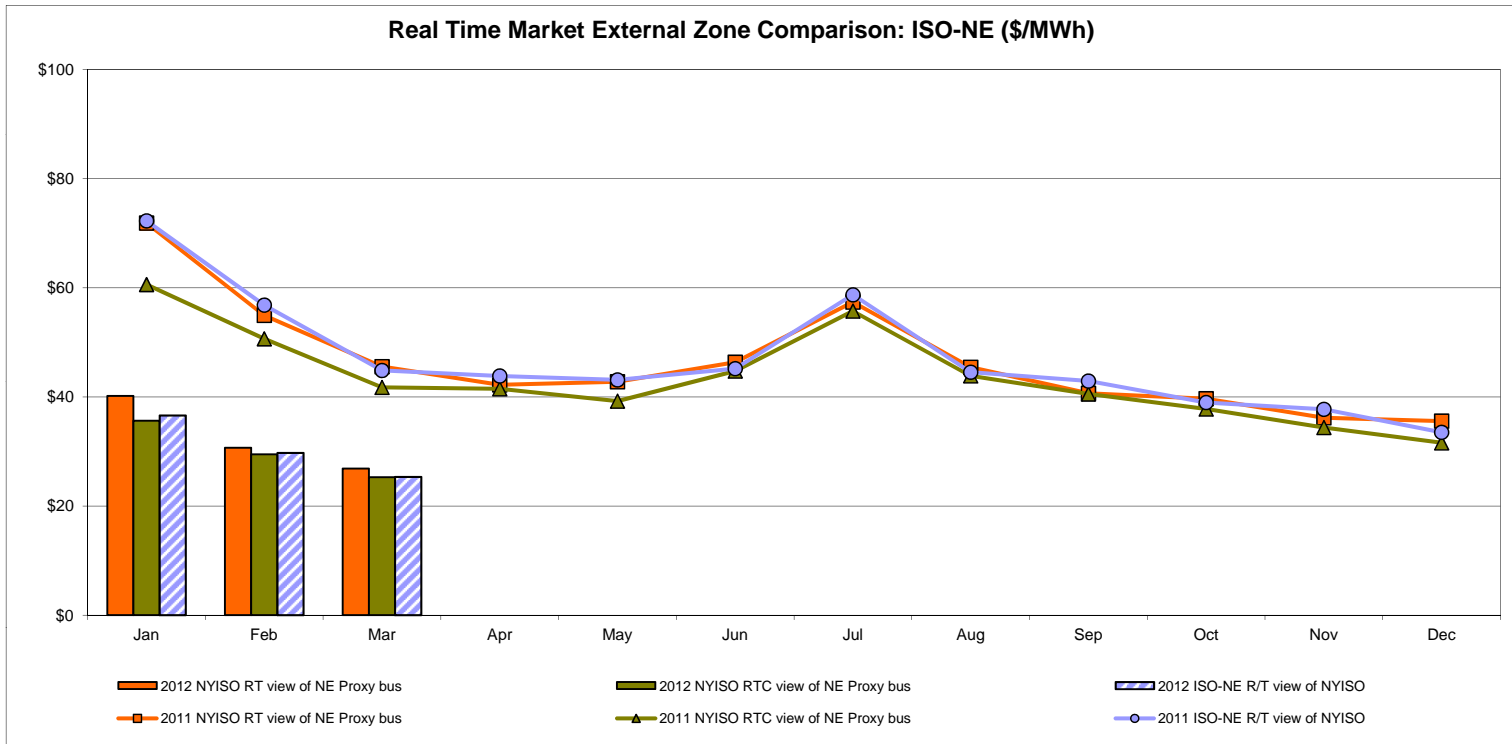


External Comparison ISO-New England

Day Ahead Market External Zone Comparison: ISO-NE (\$/MWh)

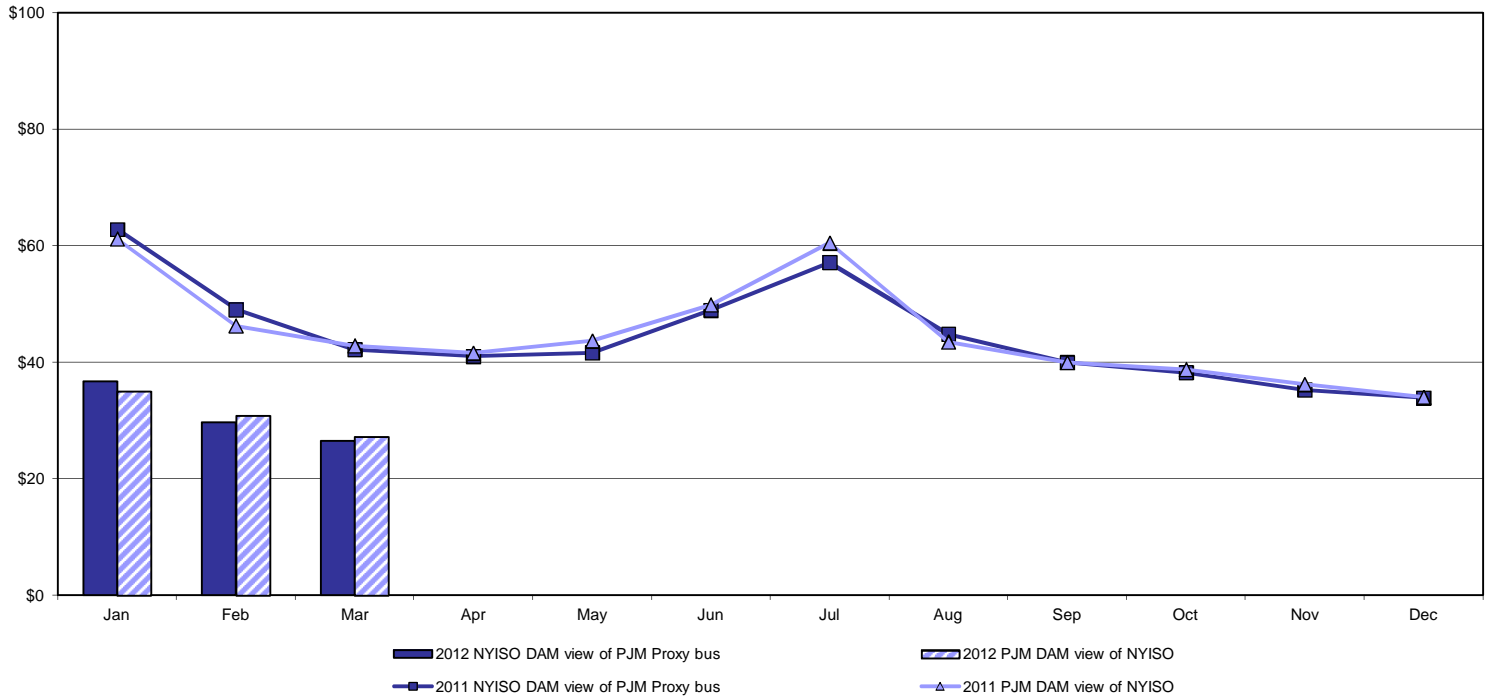


Real Time Market External Zone Comparison: ISO-NE (\$/MWh)

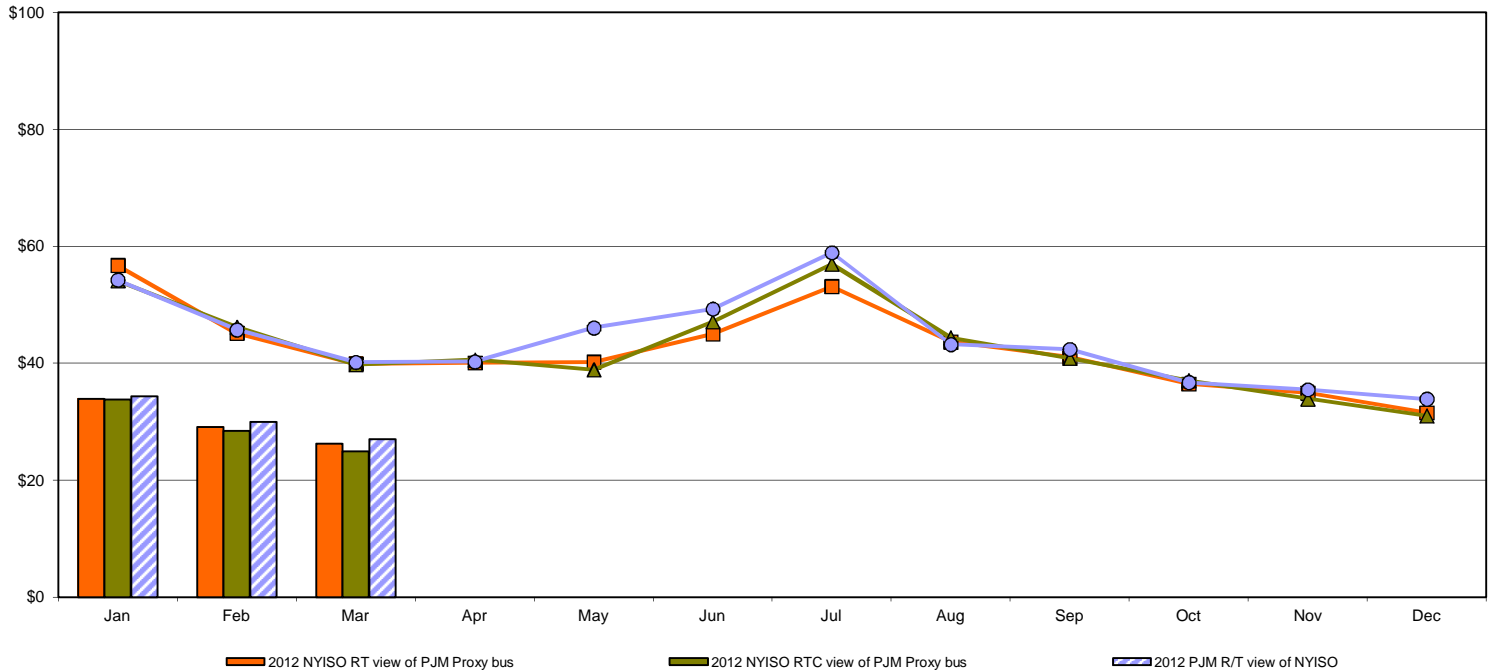


External Comparison PJM

Day Ahead Market External Zone Comparison - PJM (\$/MWh)

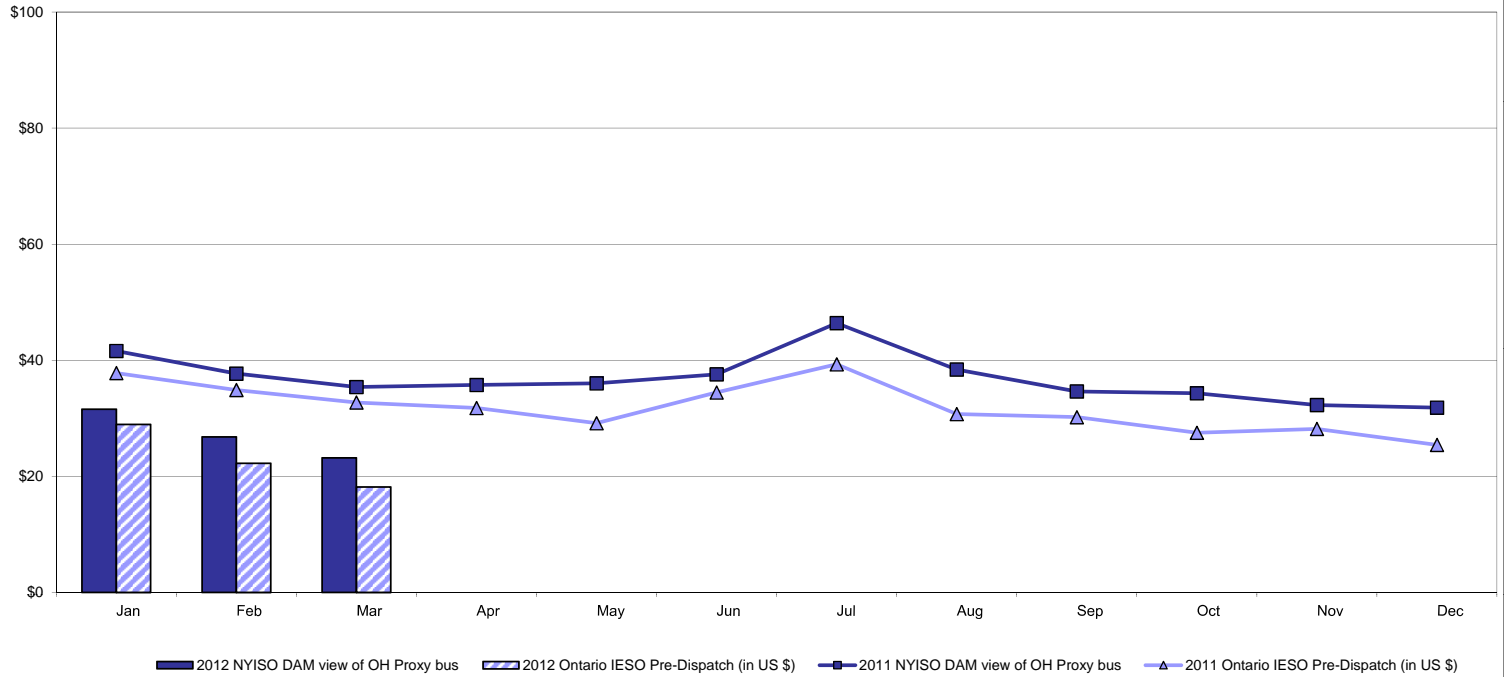


Real Time Market External Zone Comparison - PJM (\$/MWh)

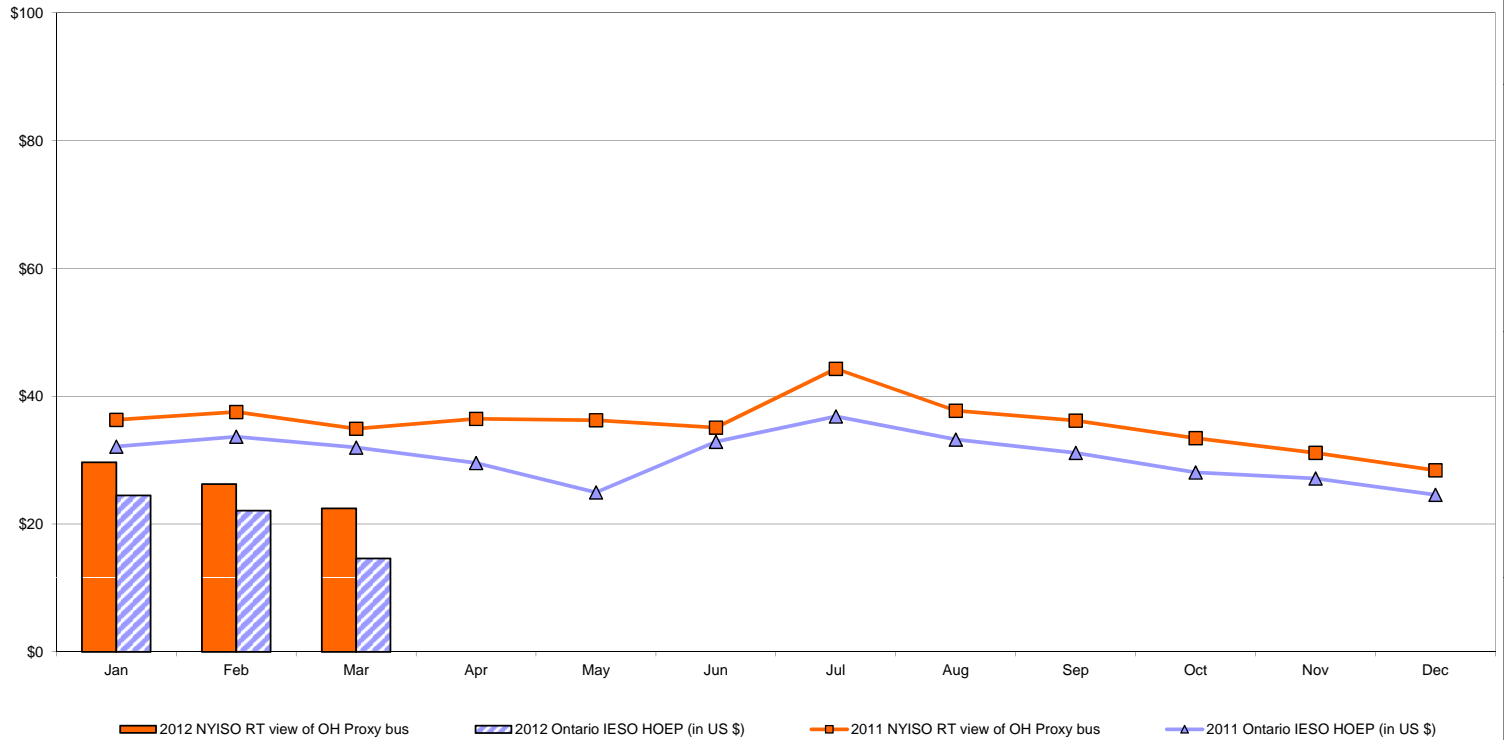


External Comparison Ontario IESO

Day Ahead Market External Zone Comparison - Ontario IESO (\$/MWh)

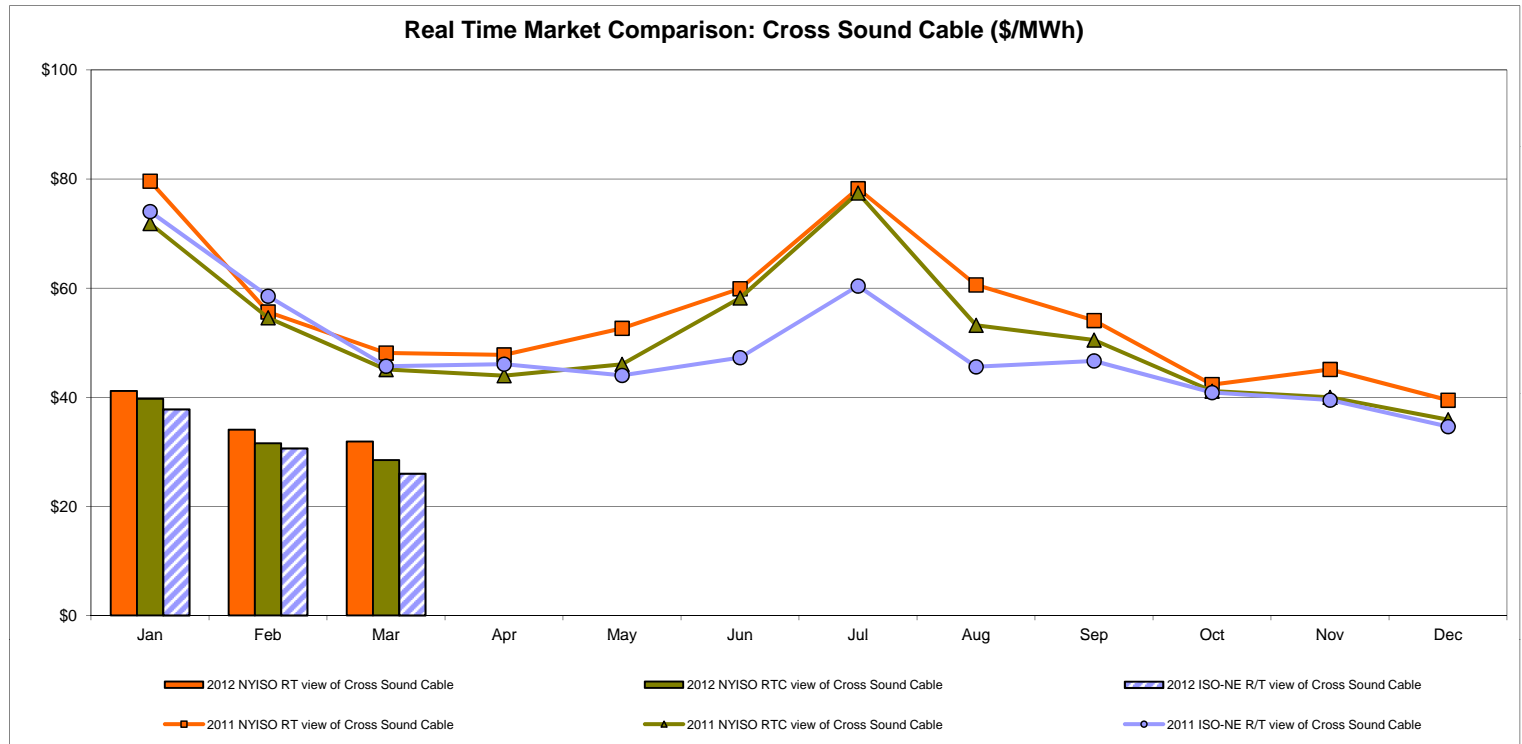
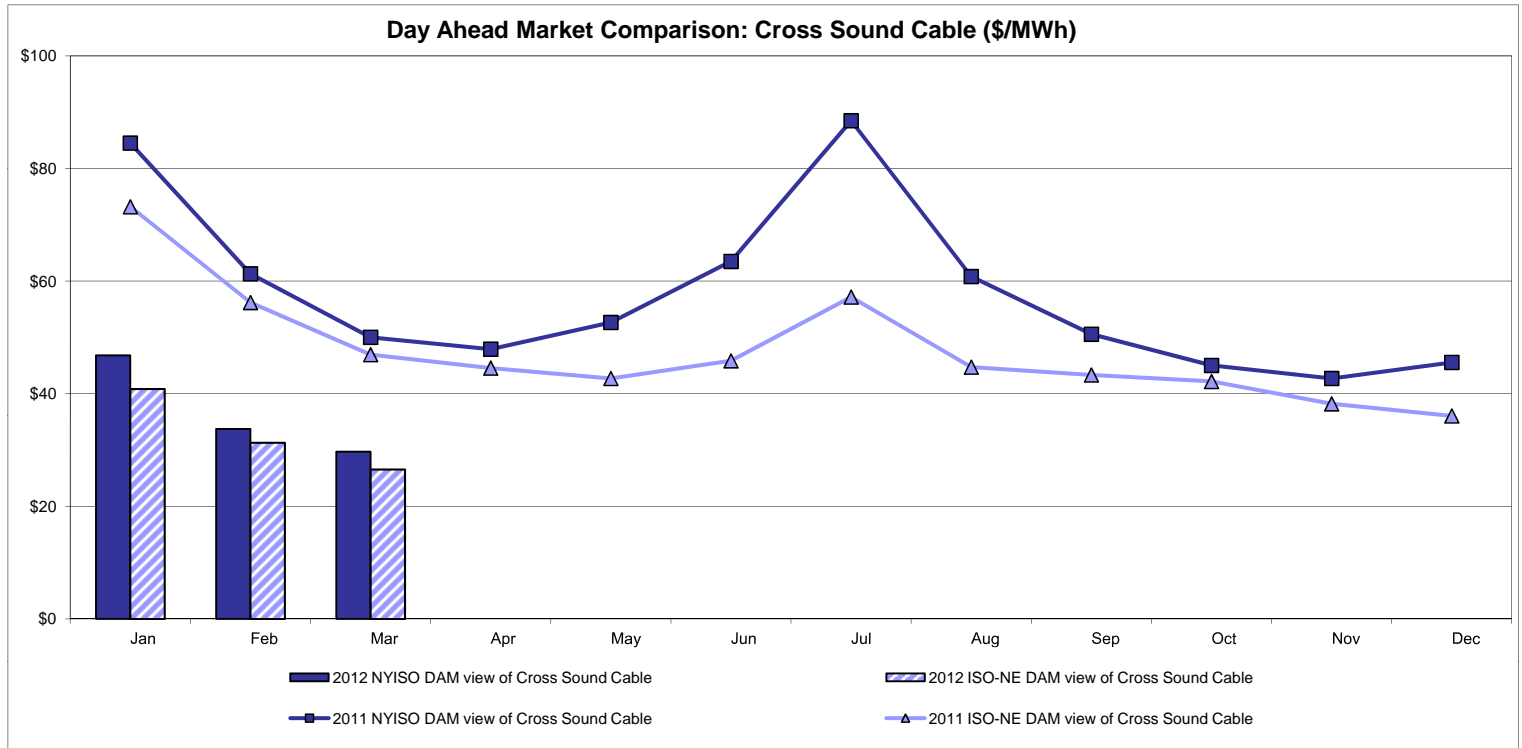


Real Time Market External Zone Comparison - Ontario IESO (\$/MWh)



Notes: Exchange factor used for March 2012 was 1.00 to US \$
 HOEP: Hourly Ontario Energy Price
 Pre-Dispatch: Projected Energy Price

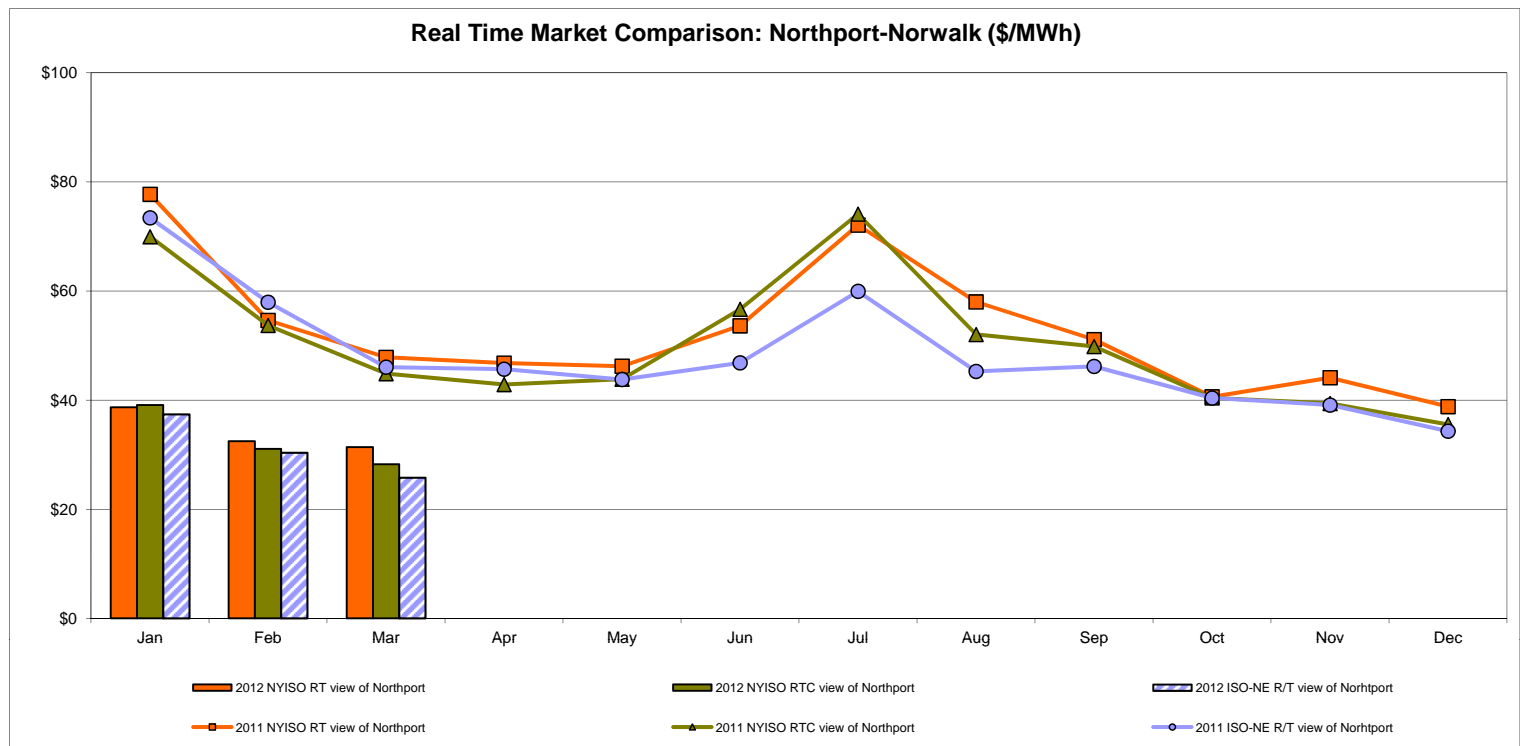
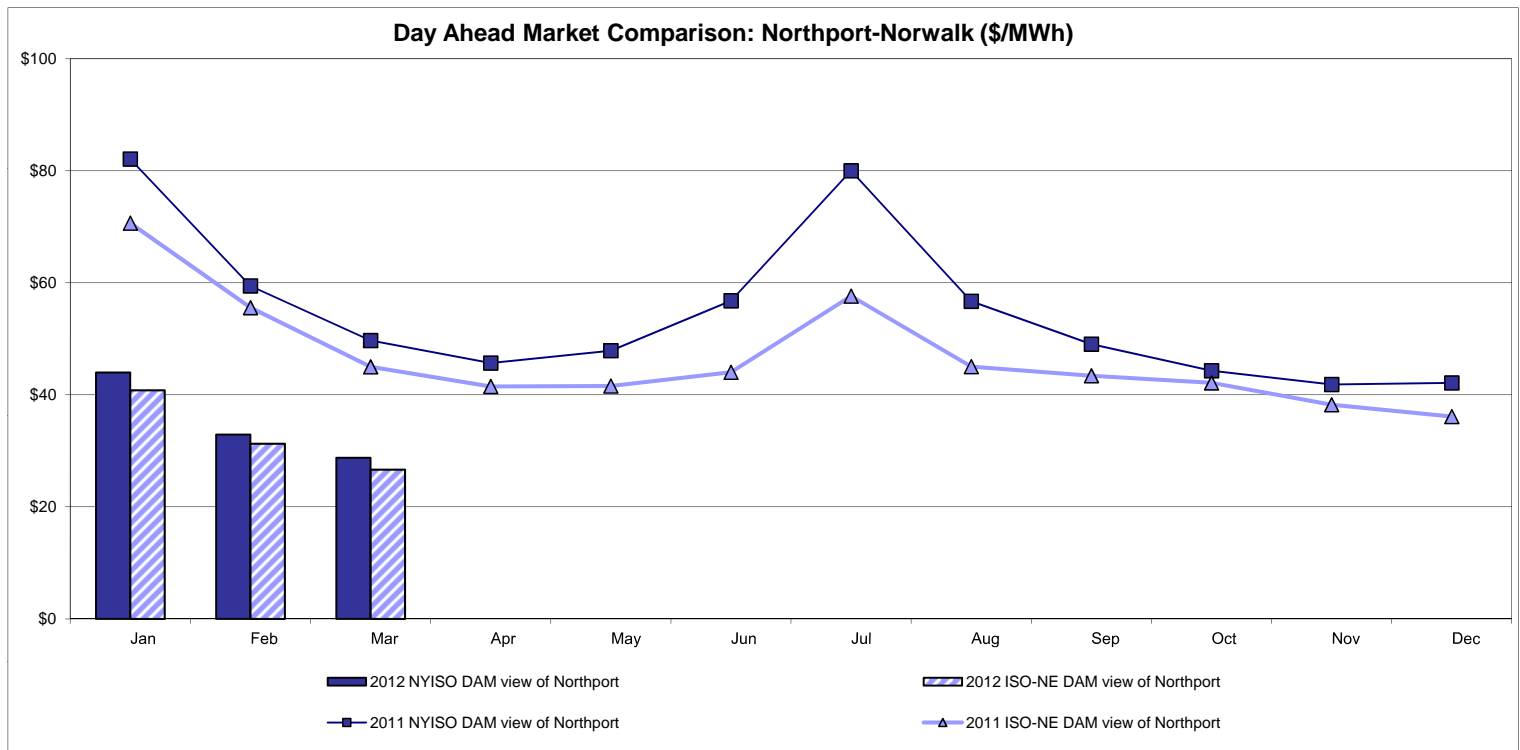
External Controllable Line: Cross Sound Cable (New England)



Note:

ISO-NE Forecast is an advisory posting @ 18:00 day before.
 The DAM and R/T prices at the Shorham 13899 interface are used for ISO-NE.
 The DAM and R/T prices at the CSC interface are used for NYISO.

External Controllable Line: Northport - Norwalk (New England)

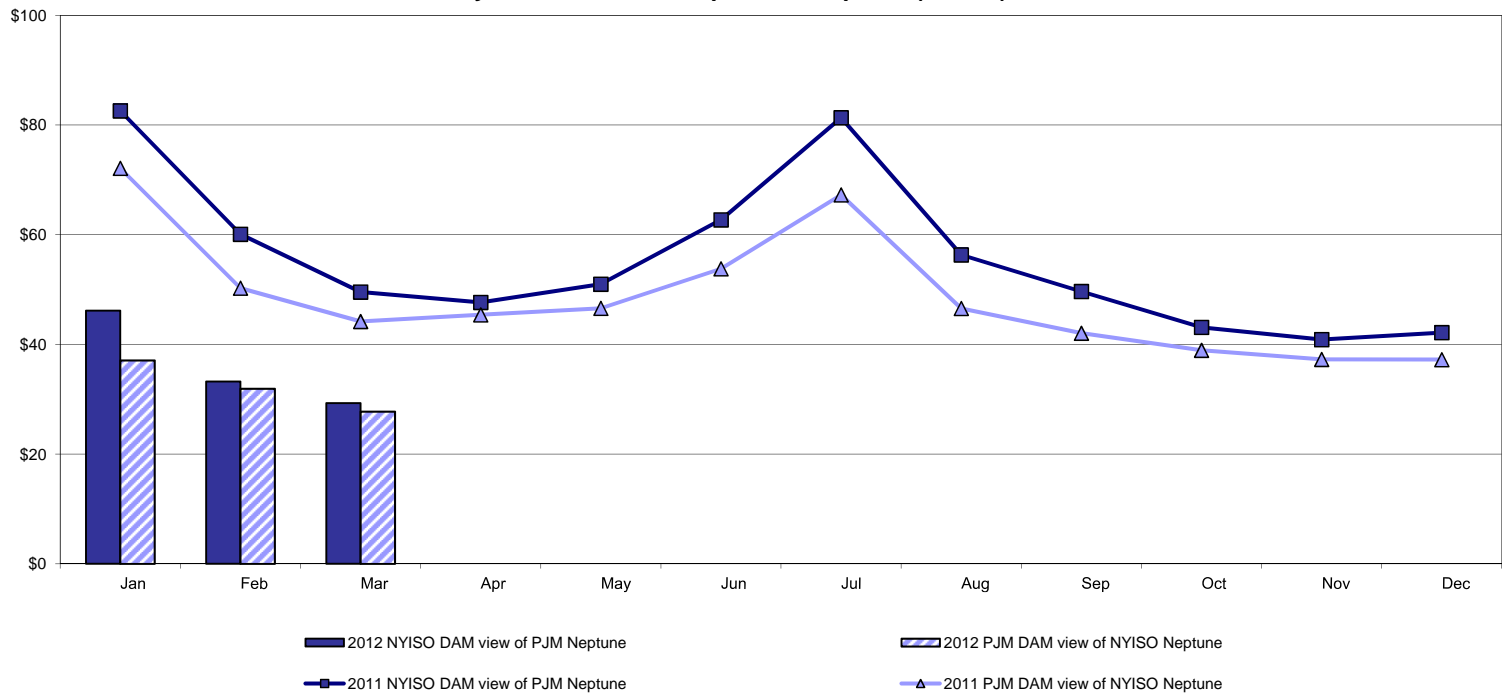


Note:

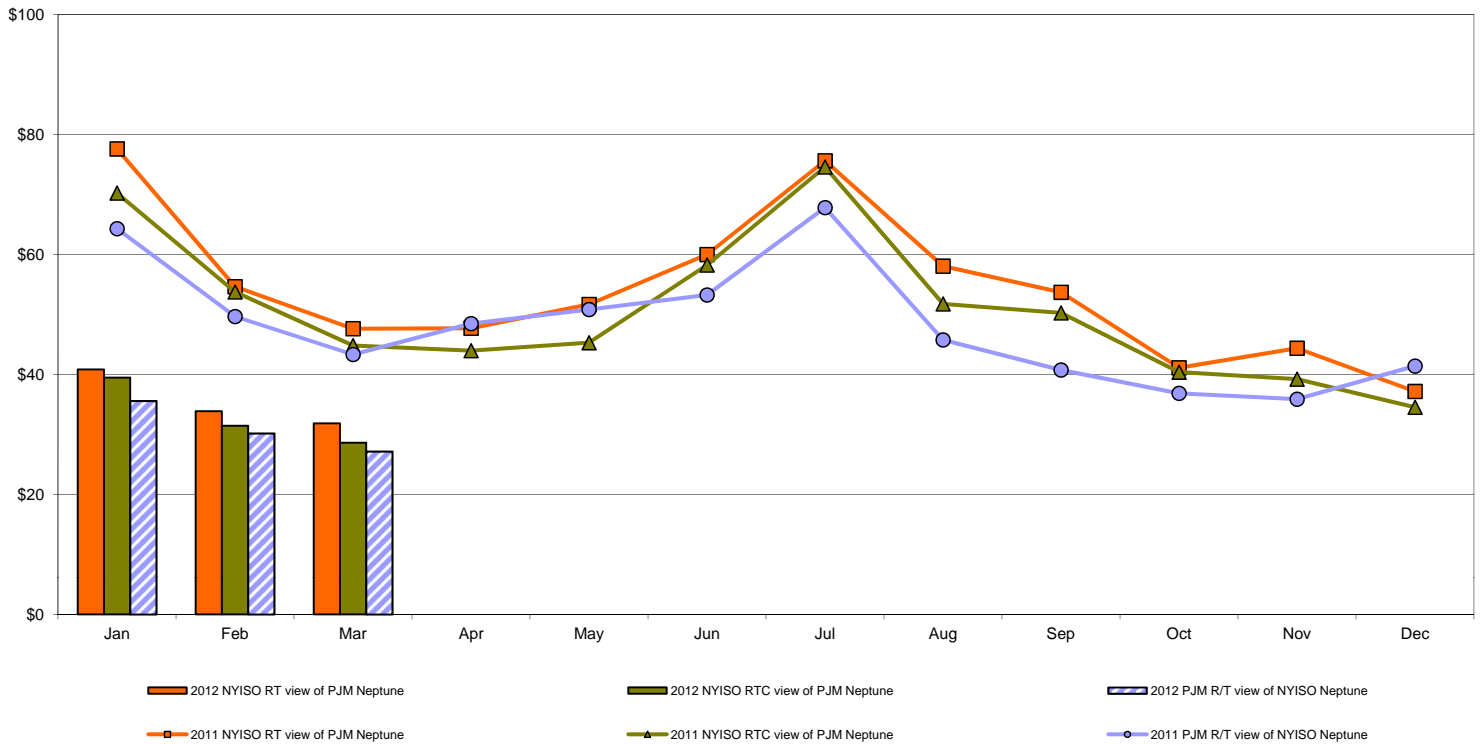
ISO-NE Forecast is an advisory posting @ 18:00 day before.
 The DAM and R/T prices at the Northport 138 interface are used for ISO-NE.
 The DAM and R/T prices at the 1385 interface are used for NYISO.

External Controllable Line: Neptune (PJM)

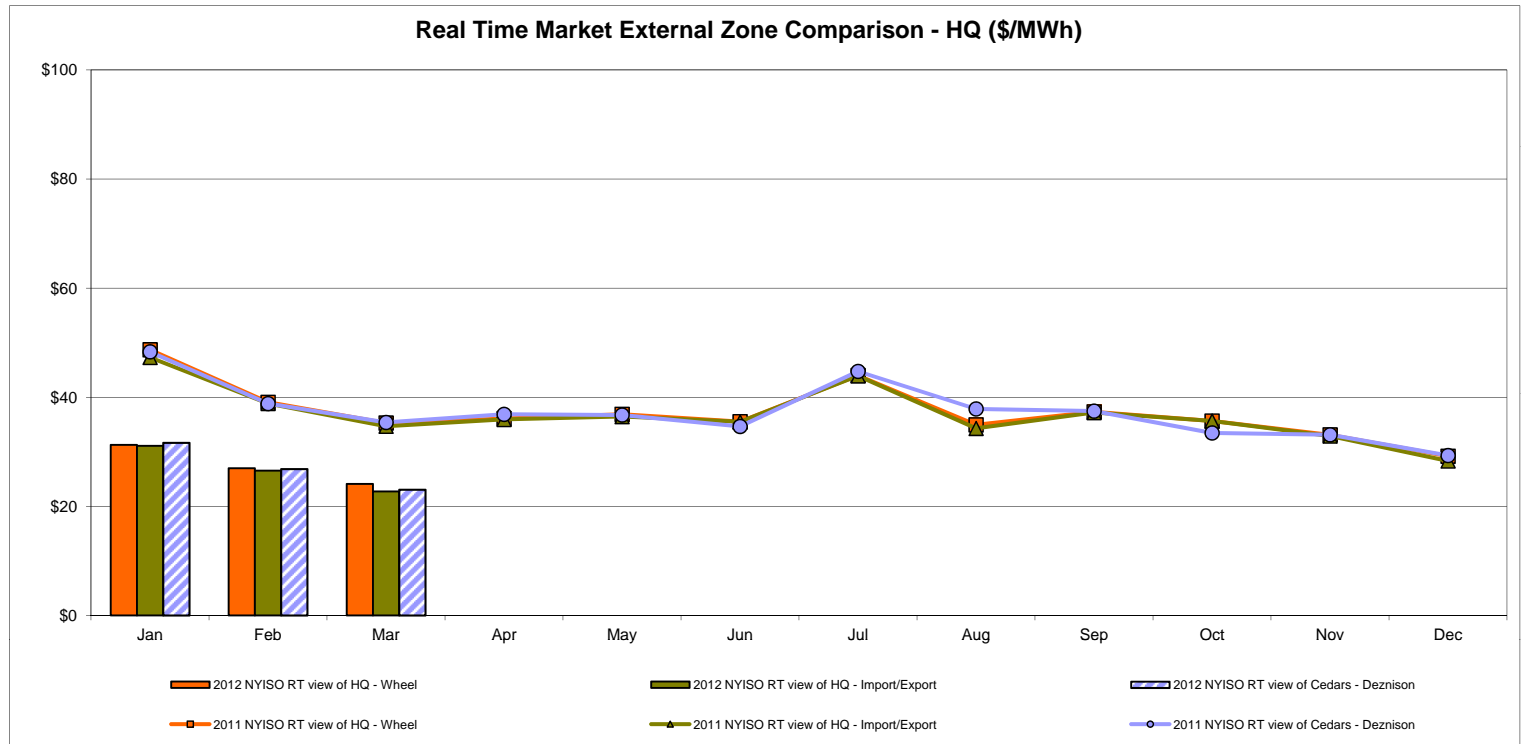
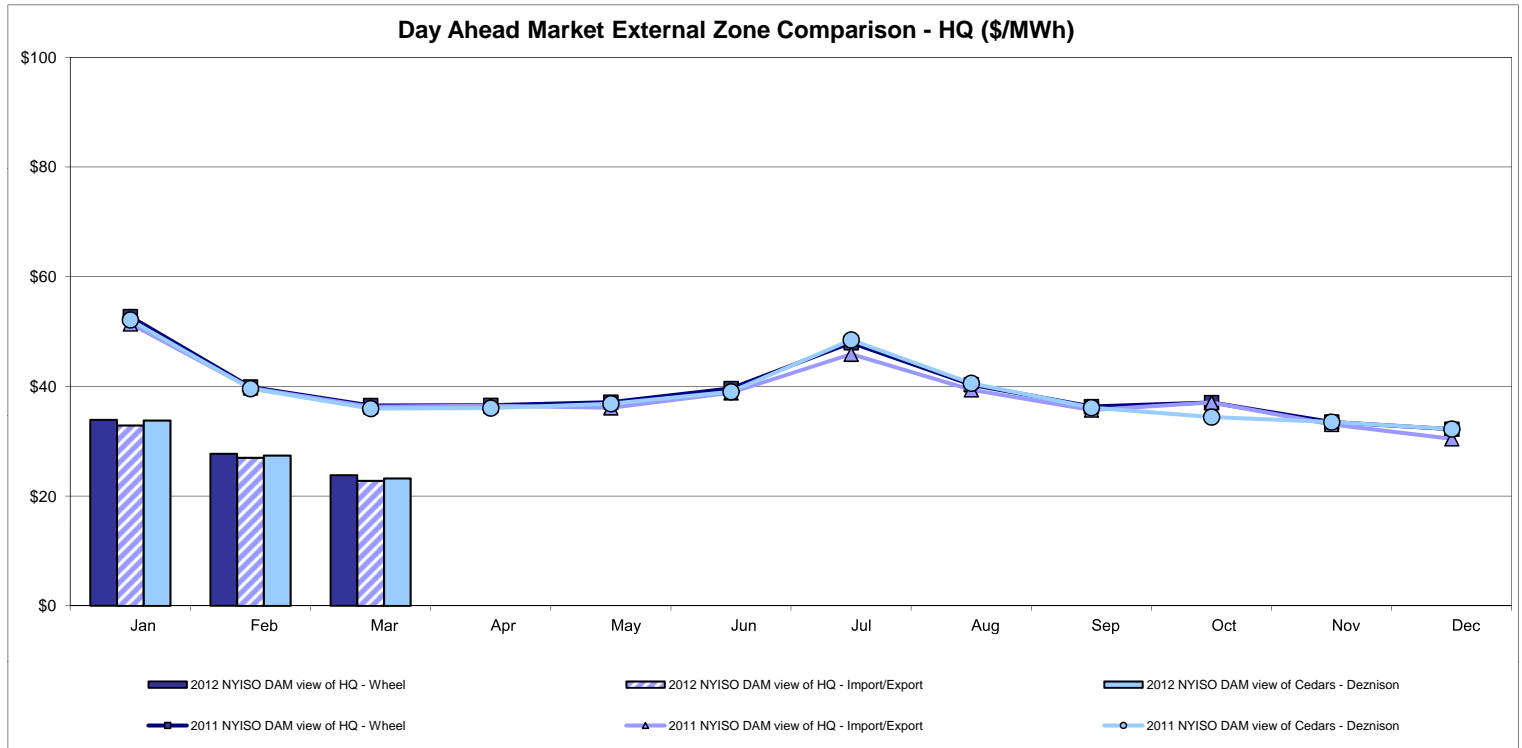
Day Ahead Market Comparison: Neptune (\$/MWh)



Real Time Market Comparison: Neptune (\$/MWh)

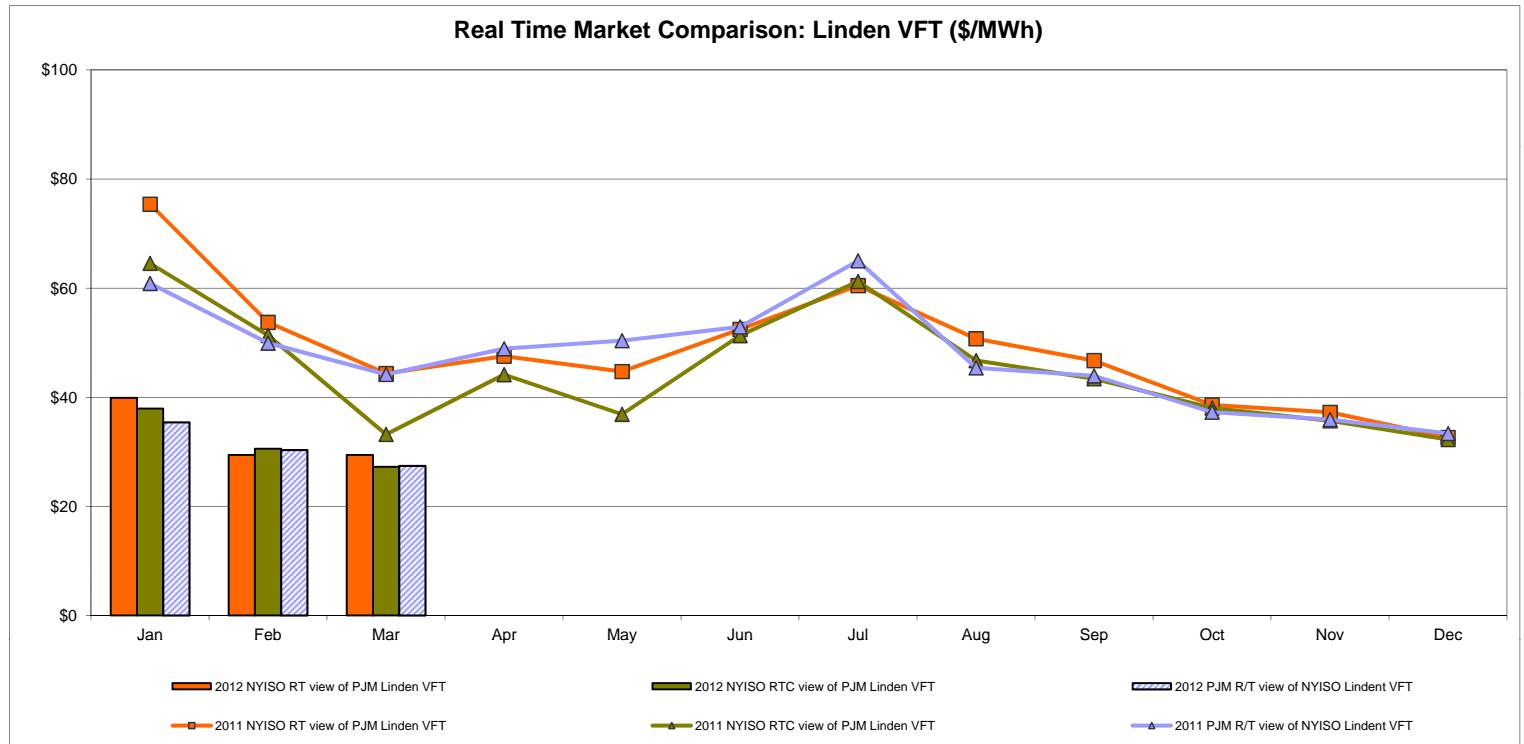
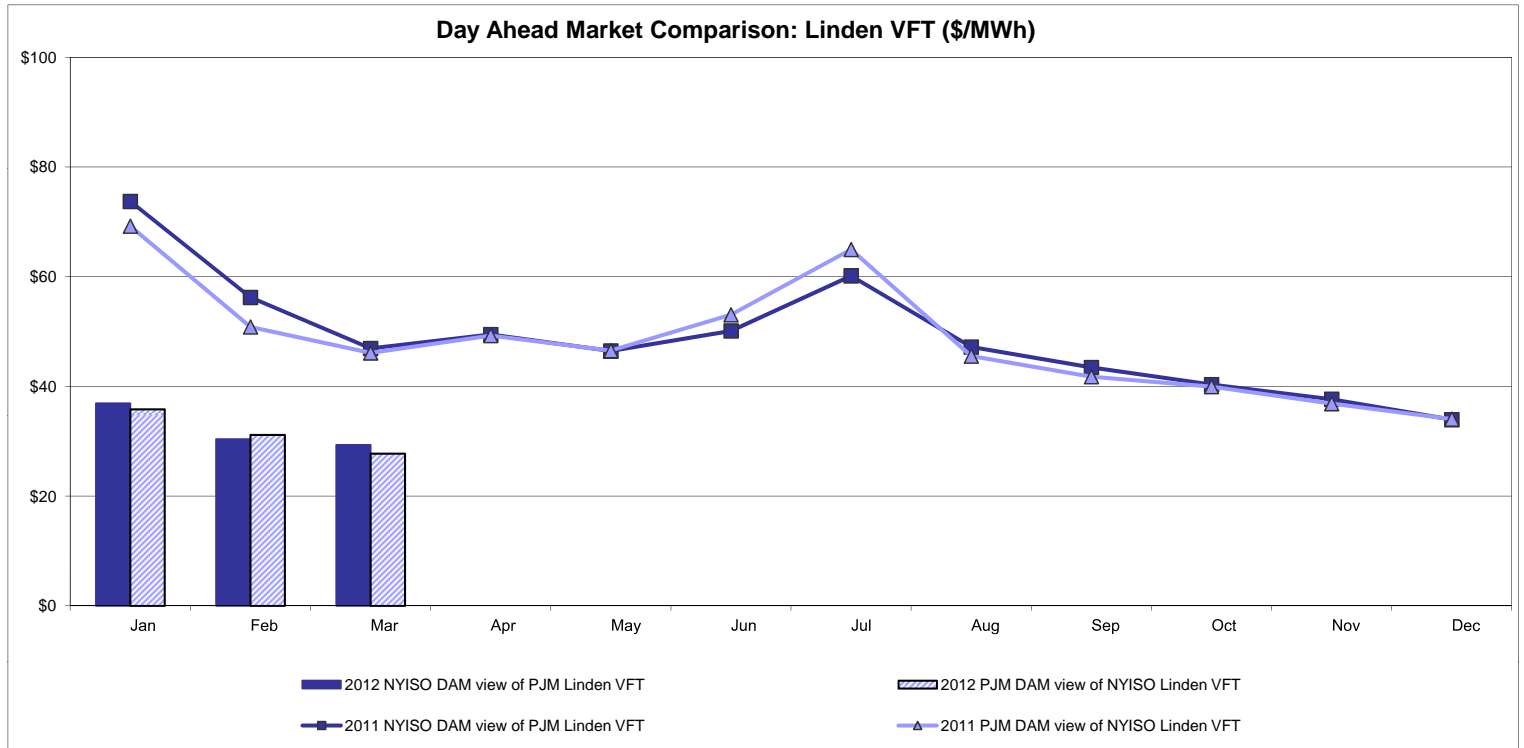


External Comparison Hydro-Quebec



Note:
Hydro-Quebec Prices are unavailable.

External Controllable Line: Linden VFT (PJM)

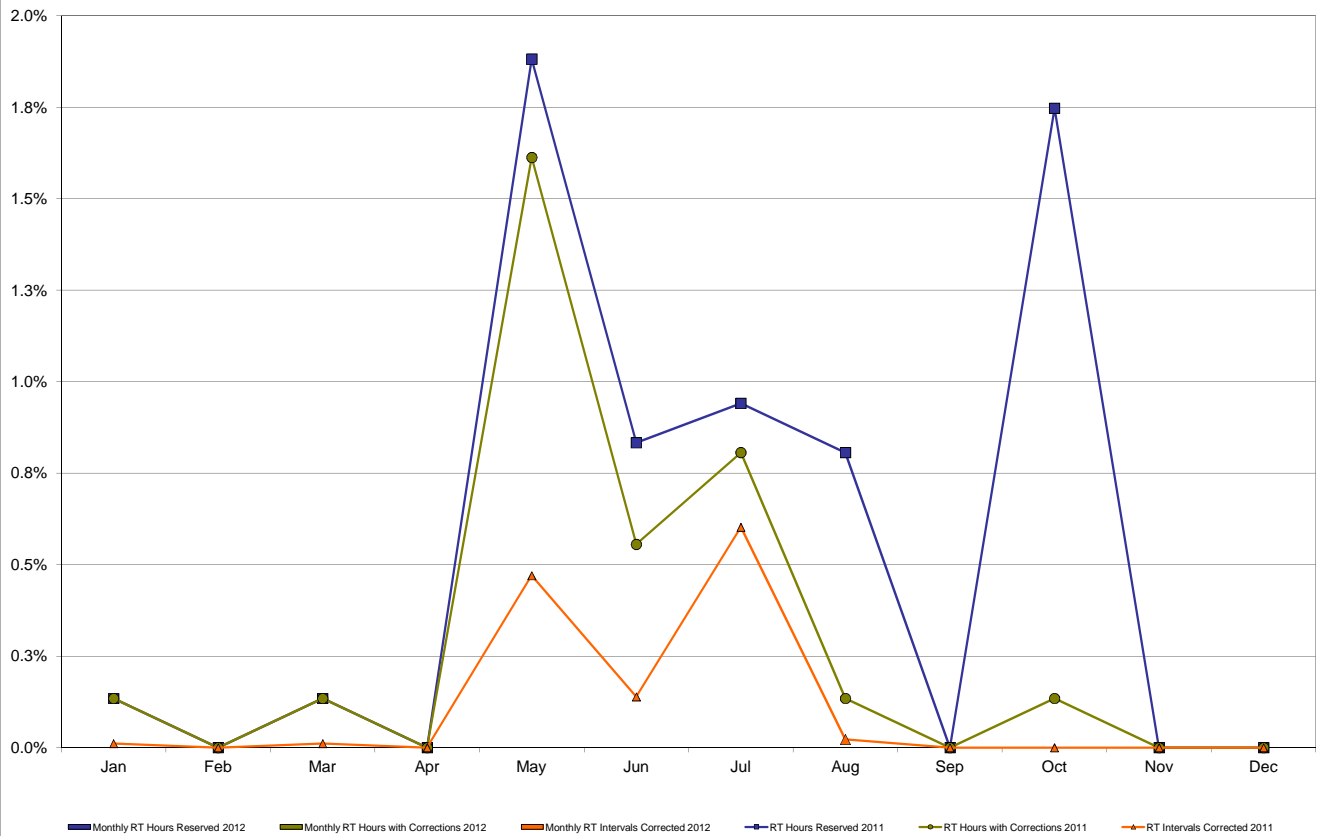


NYISO Real Time Price Correction Statistics

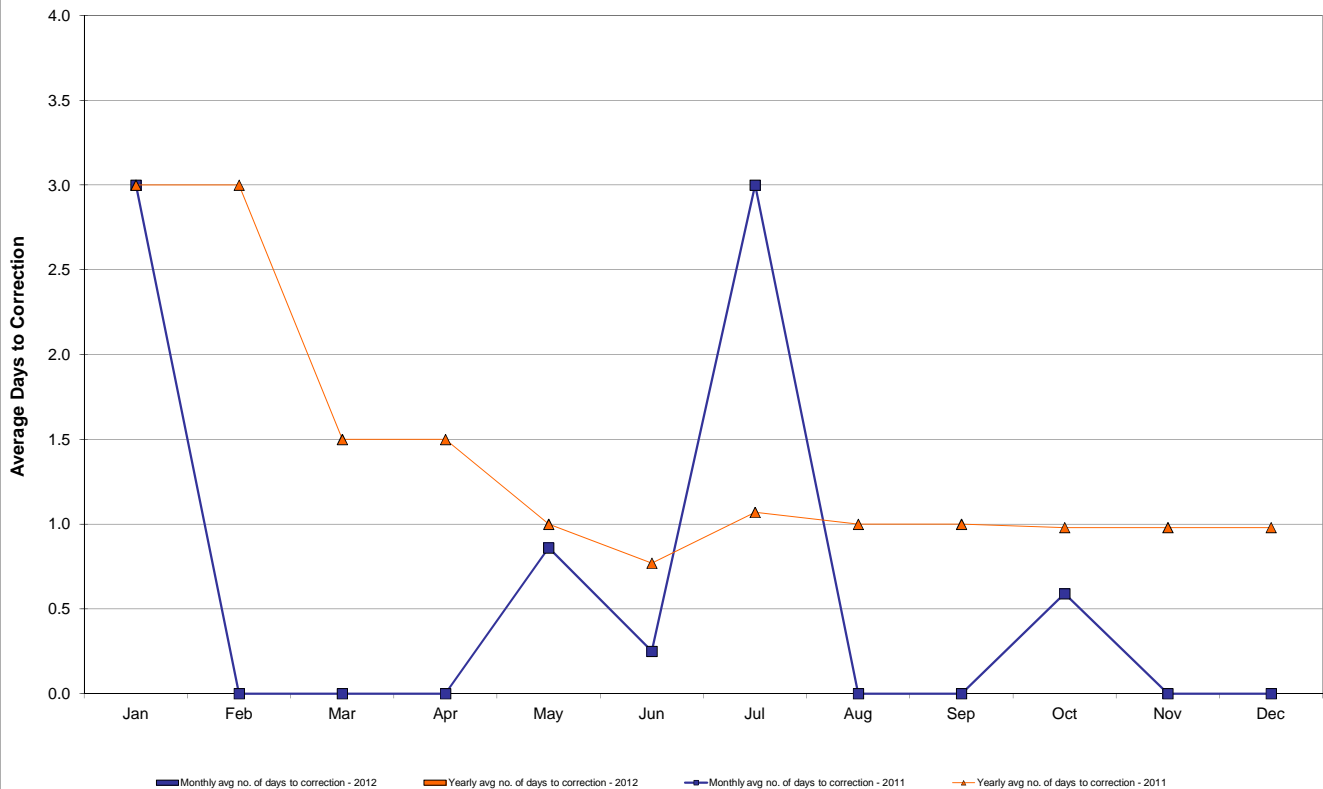
2012		<u>January</u>	<u>February</u>	<u>March</u>	<u>April</u>	<u>May</u>	<u>June</u>	<u>July</u>	<u>August</u>	<u>September</u>	<u>October</u>	<u>November</u>	<u>December</u>
<u>Hour Corrections</u>													
Number of hours with corrections	in the month	0	0	0									
Number of hours	in the month	744	696	743									
% of hours with corrections	in the month	0.00%	0.00%	0.00%									
% of hours with corrections	year-to-date	0.00%	0.00%	0.00%									
<u>Interval Corrections</u>													
Number of intervals corrected	in the month	0	0	0									
Number of intervals	in the month	8,987	8,082	8,950									
% of intervals corrected	in the month	0.00%	0.00%	0.00%									
% of intervals corrected	year-to-date	0.00%	0.00%	0.00%									
<u>Hours Reserved</u>													
Number of hours reserved	in the month	0	0	0									
Number of hours	in the month	744	696	743									
% of hours reserved	in the month	0.00%	0.00%	0.00%									
% of hours reserved	year-to-date	0.00%	0.00%	0.00%									
<u>Days to Correction *</u>													
Avg. number of days to correction	in the month	0.00	0.00	0.00									
Avg. number of days to correction	year-to-date	0.00	0.00	0.00									
<u>Days Without Corrections</u>													
Days without corrections	in the month	31	29	31									
Days without corrections	year-to-date	31	60	91									
2011		<u>January</u>	<u>February</u>	<u>March</u>	<u>April</u>	<u>May</u>	<u>June</u>	<u>July</u>	<u>August</u>	<u>September</u>	<u>October</u>	<u>November</u>	<u>December</u>
<u>Hour Corrections</u>													
Number of hours with corrections	in the month	1	0	1	0	12	4	6	1	0	1	0	0
Number of hours	in the month	744	672	744	720	744	720	744	744	720	744	720	744
% of hours with corrections	in the month	0.13%	0.00%	0.13%	0.00%	1.61%	0.56%	0.81%	0.13%	0.00%	0.13%	0.00%	0.00%
% of hours with corrections	year-to-date	0.13%	0.07%	0.09%	0.07%	0.39%	0.41%	0.47%	0.43%	0.38%	0.36%	0.32%	0.30%
<u>Interval Corrections</u>													
Number of intervals corrected	in the month	1	0	1	0	42	12	54	2	0	2	0	0
Number of intervals	in the month	8,938	8,049	8,924	8,671	8,939	8,661	8,967	9,021	8,678	8,940	8,671	8,954
% of intervals corrected	in the month	0.01%	0.00%	0.01%	0.00%	0.47%	0.14%	0.60%	0.02%	0.00%	0.02%	0.00%	0.00%
% of intervals corrected	year-to-date	0.01%	0.01%	0.01%	0.01%	0.10%	0.11%	0.18%	0.16%	0.14%	0.13%	0.12%	0.11%
<u>Hours Reserved</u>													
Number of hours reserved	in the month	1	0	1	0	14	6	7	6	0	13	0	0
Number of hours	in the month	744	672	744	720	744	720	744	744	720	744	720	744
% of hours reserved	in the month	0.13%	0.00%	0.13%	0.00%	1.88%	0.83%	0.94%	0.81%	0.00%	1.75%	0.00%	0.00%
% of hours reserved	year-to-date	0.13%	0.07%	0.09%	0.07%	0.44%	0.51%	0.57%	0.60%	0.53%	0.66%	0.60%	0.55%
<u>Days to Correction *</u>													
Avg. number of days to correction	in the month	3.00	0.00	0.00	0.00	0.86	0.25	3.00	0.00	0.00	0.59	0.00	0.00
Avg. number of days to correction	year-to-date	3.00	3.00	1.50	1.50	1.00	0.77	1.07	1.00	1.00	0.98	0.98	0.98
<u>Days Without Corrections</u>													
Days without corrections	in the month	30	28	30	30	24	26	29	30	30	30	30	31
Days without corrections	year-to-date	30	58	88	118	142	168	197	227	257	287	317	348

* Calendar days from reservation date.

Percentage of Real-Time Corrections

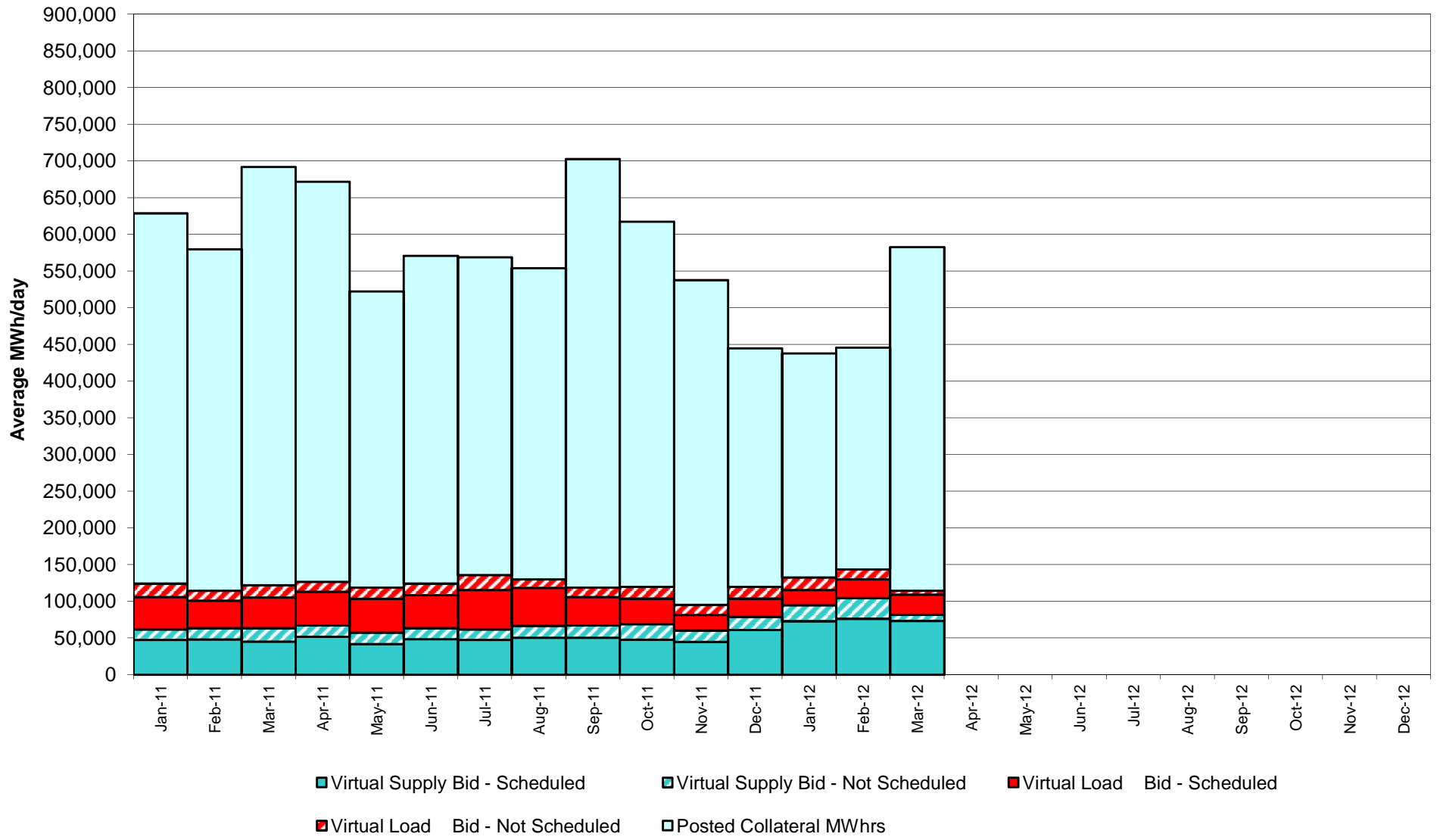


Annual average time period for making Price Corrections (from reservation date) *

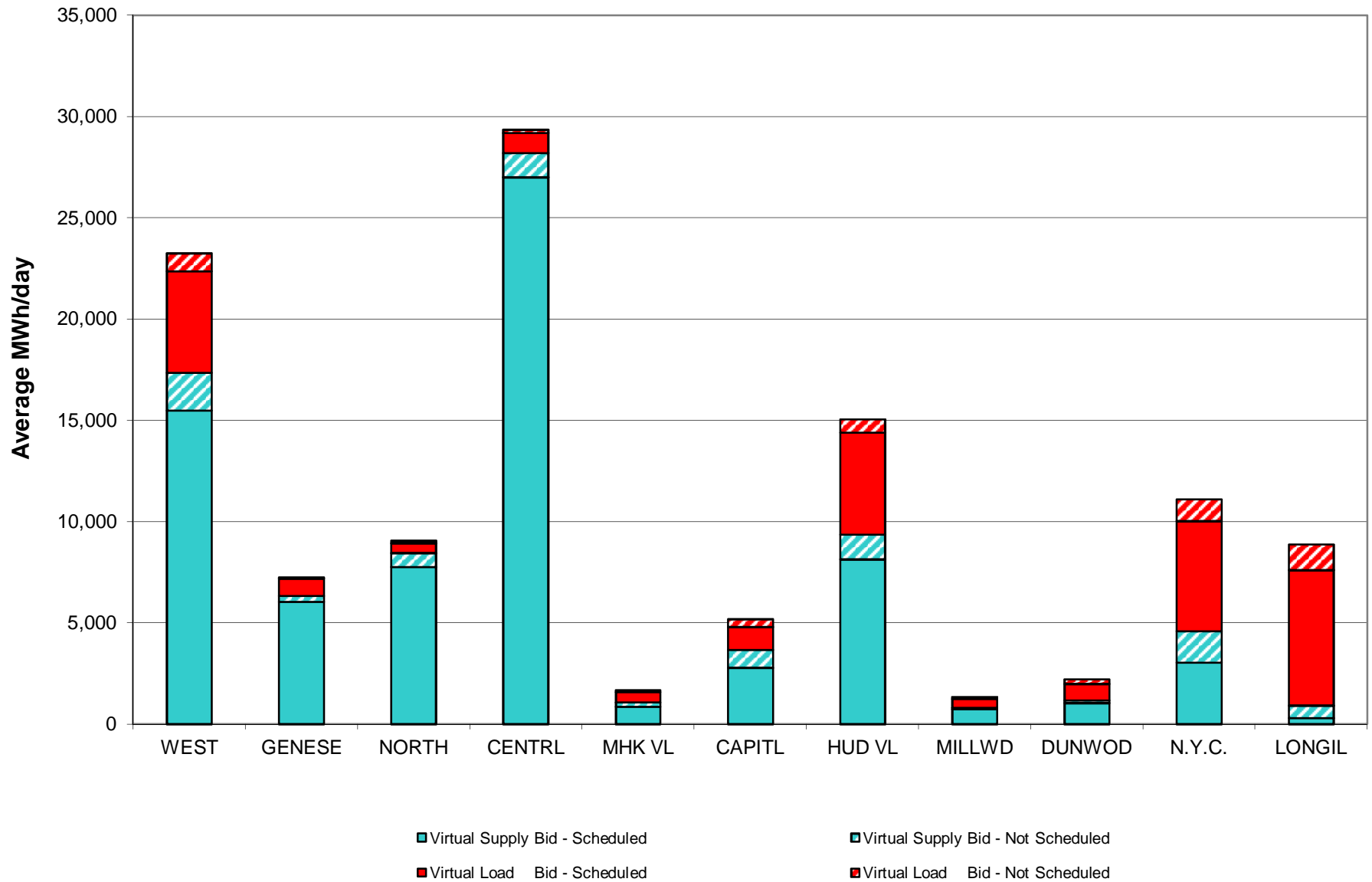


* Calendar days from reservation date.

NYISO Virtual Trading Average MWh per day



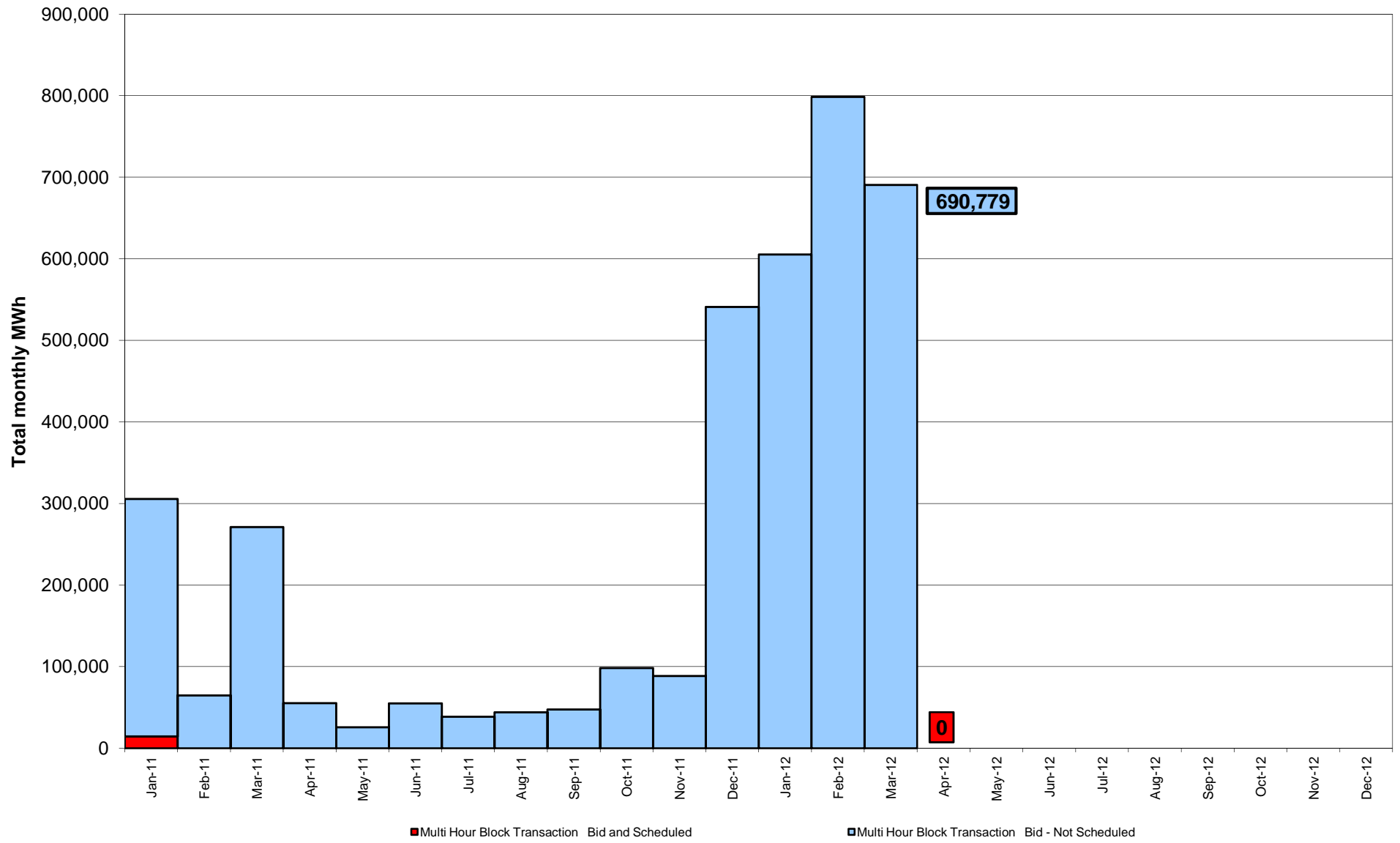
Virtual Load and Supply Zonal Statistics through March 31, 2012



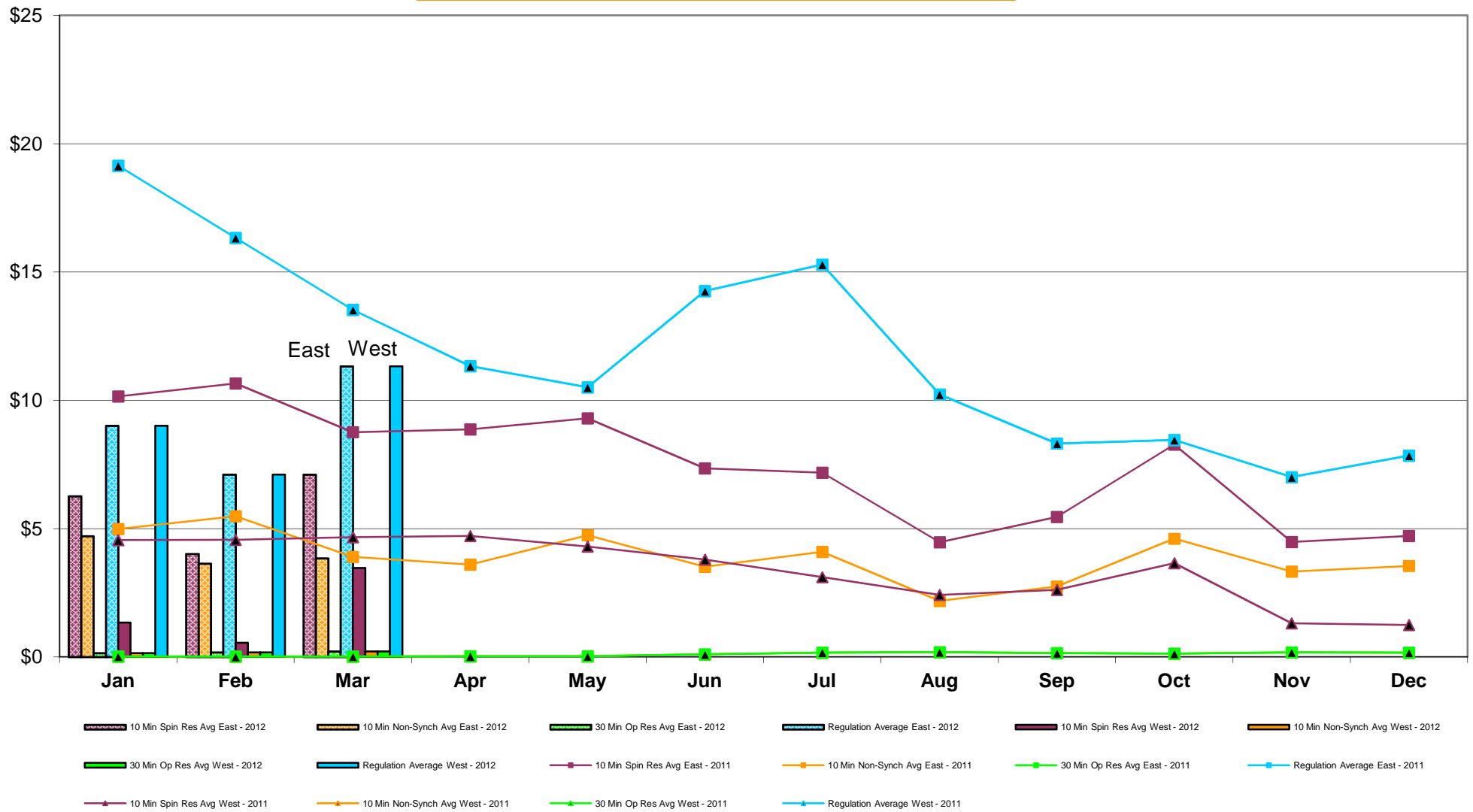
Virtual Load and Supply Zonal Statistics (Average MWh/day) - 2012

Virtual Load Bid						Virtual Supply Bid											
Zone	Date	Scheduled	Not Scheduled	Scheduled	Not Scheduled	Zone	Date	Scheduled	Not Scheduled	Scheduled	Not Scheduled	Zone	Date	Scheduled	Not Scheduled	Scheduled	Not Scheduled
WEST	Jan-12	2,246	938	13,593	956	MHK VL	Jan-12	419	967	1,488	1,127	DUNWOD	Jan-12	1,401	461	1,432	189
	Feb-12	5,195	315	15,119	1,672		Feb-12	444	935	1,592	1,303		Feb-12	1,805	219	2,922	625
	Mar-12	5,008	874	15,504	1,856		Mar-12	521	101	863	196		Mar-12	816	227	1,039	135
	Apr-12						Apr-12						Apr-12				
	May-12						May-12						May-12				
	Jun-12						Jun-12						Jun-12				
	Jul-12						Jul-12						Jul-12				
	Aug-12						Aug-12						Aug-12				
	Sep-12						Sep-12						Sep-12				
	Oct-12						Oct-12						Oct-12				
	Nov-12						Nov-12						Nov-12				
	Dec-12						Dec-12						Dec-12				
GENESE	Jan-12	257	102	5,254	64	CAPITL	Jan-12	1,903	5,590	3,842	3,364	N.Y.C.	Jan-12	4,572	4,060	2,511	9,344
	Feb-12	553	52	5,238	271		Feb-12	1,408	4,213	3,379	5,116		Feb-12	2,819	3,414	4,839	10,519
	Mar-12	866	61	6,036	283		Mar-12	1,126	369	2,777	904		Mar-12	5,449	1,074	3,035	1,548
	Apr-12						Apr-12						Apr-12				
	May-12						May-12						May-12				
	Jun-12						Jun-12						Jun-12				
	Jul-12						Jul-12						Jul-12				
	Aug-12						Aug-12						Aug-12				
	Sep-12						Sep-12						Sep-12				
	Oct-12						Oct-12						Oct-12				
	Nov-12						Nov-12						Nov-12				
	Dec-12						Dec-12						Dec-12				
NORTH	Jan-12	289	967	7,215	1,189	HUD VL	Jan-12	3,466	693	9,513	2,413	LONGIL	Jan-12	5,372	2,036	684	1,383
	Feb-12	332	935	7,359	1,119		Feb-12	5,087	794	9,250	3,788		Feb-12	6,810	1,496	473	1,708
	Mar-12	478	131	7,753	691		Mar-12	5,032	665	8,136	1,221		Mar-12	6,675	1,276	298	624
	Apr-12						Apr-12						Apr-12				
	May-12						May-12						May-12				
	Jun-12						Jun-12						Jun-12				
	Jul-12						Jul-12						Jul-12				
	Aug-12						Aug-12						Aug-12				
	Sep-12						Sep-12						Sep-12				
	Oct-12						Oct-12						Oct-12				
	Nov-12						Nov-12						Nov-12				
	Dec-12						Dec-12						Dec-12				
CENTRL	Jan-12	526	1,178	26,589	1,270	MILLWD	Jan-12	505	206	929	50	NYISO	Jan-12	20,956	17,198	73,050	21,349
	Feb-12	757	1,175	25,087	2,011		Feb-12	379	161	949	88		Feb-12	25,588	13,708	76,209	28,222
	Mar-12	993	171	27,015	1,187		Mar-12	442	99	736	79		Mar-12	27,405	5,047	73,193	8,725
	Apr-12						Apr-12						Apr-12				
	May-12						May-12						May-12				
	Jun-12						Jun-12						Jun-12				
	Jul-12						Jul-12						Jul-12				
	Aug-12						Aug-12						Aug-12				
	Sep-12						Sep-12						Sep-12				
	Oct-12						Oct-12						Oct-12				
	Nov-12						Nov-12						Nov-12				
	Dec-12						Dec-12						Dec-12				

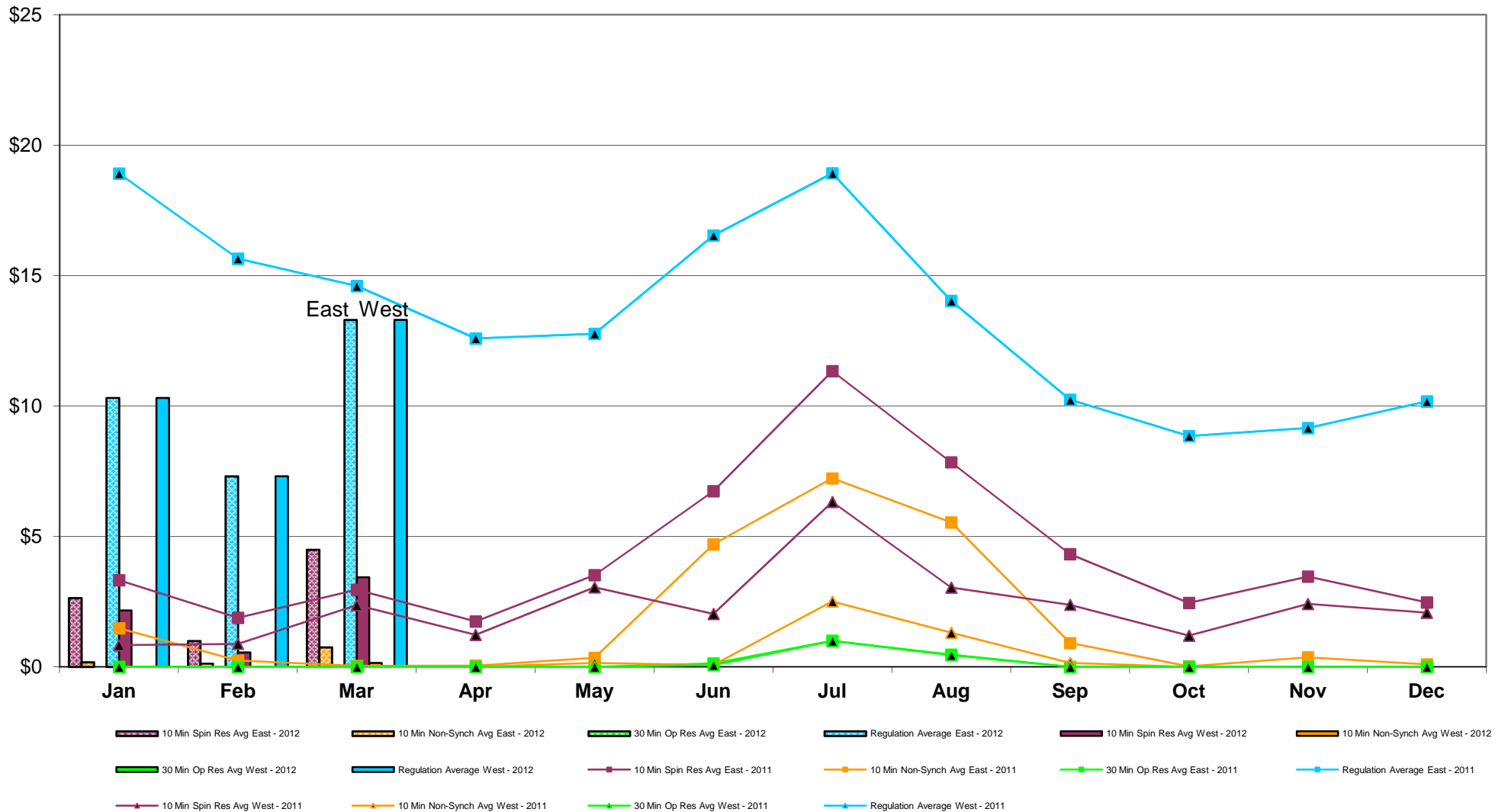
NYISO Multi Hour Block Transactions Monthly Total MWh



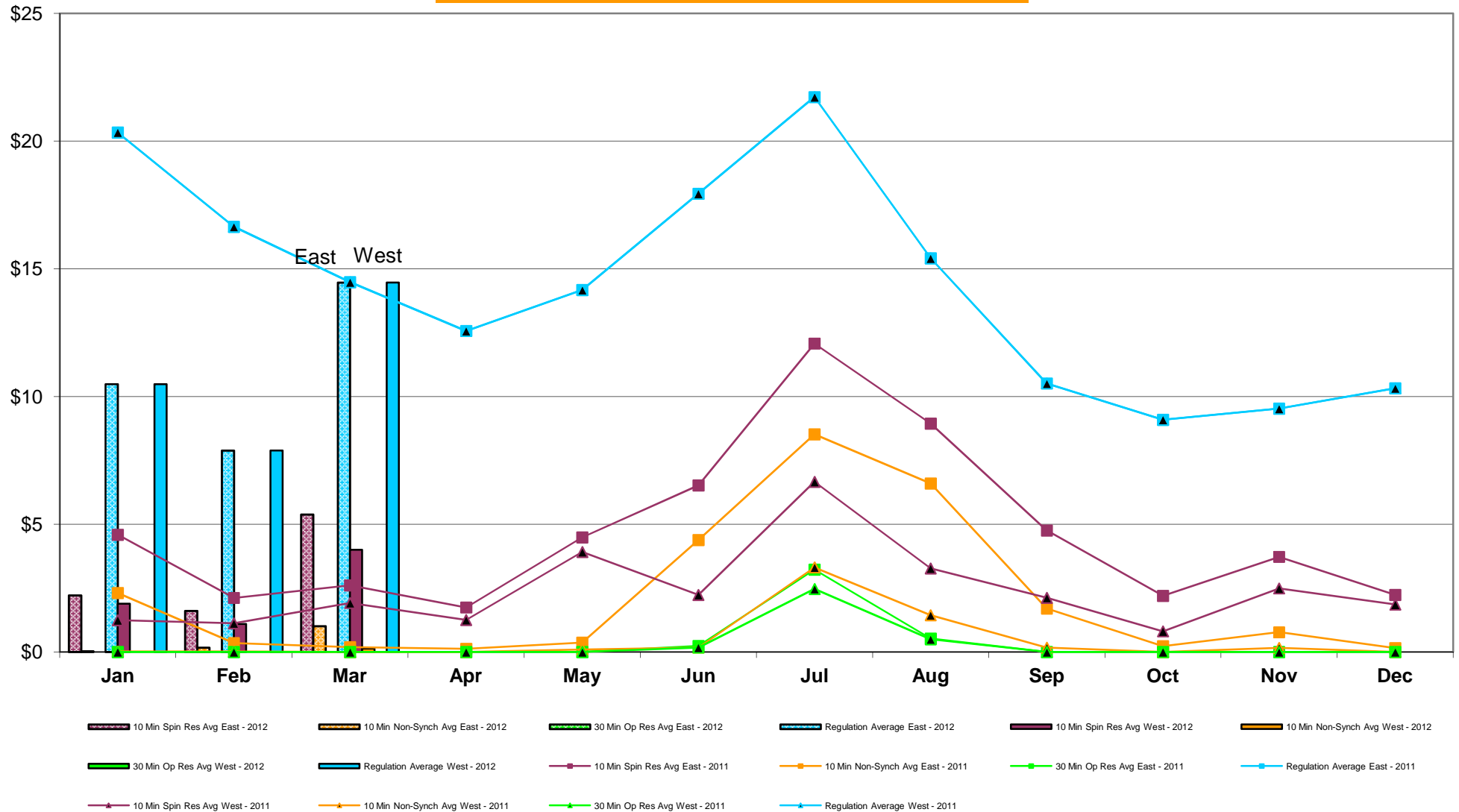
NYISO Monthly Average Ancillary Service Prices Day Ahead Market 2011 - 2012



NYISO Monthly Average Ancillary Service Prices RTC Market 2011 - 2012



NYISO Monthly Average Ancillary Service Prices Real Time Market 2011 - 2012

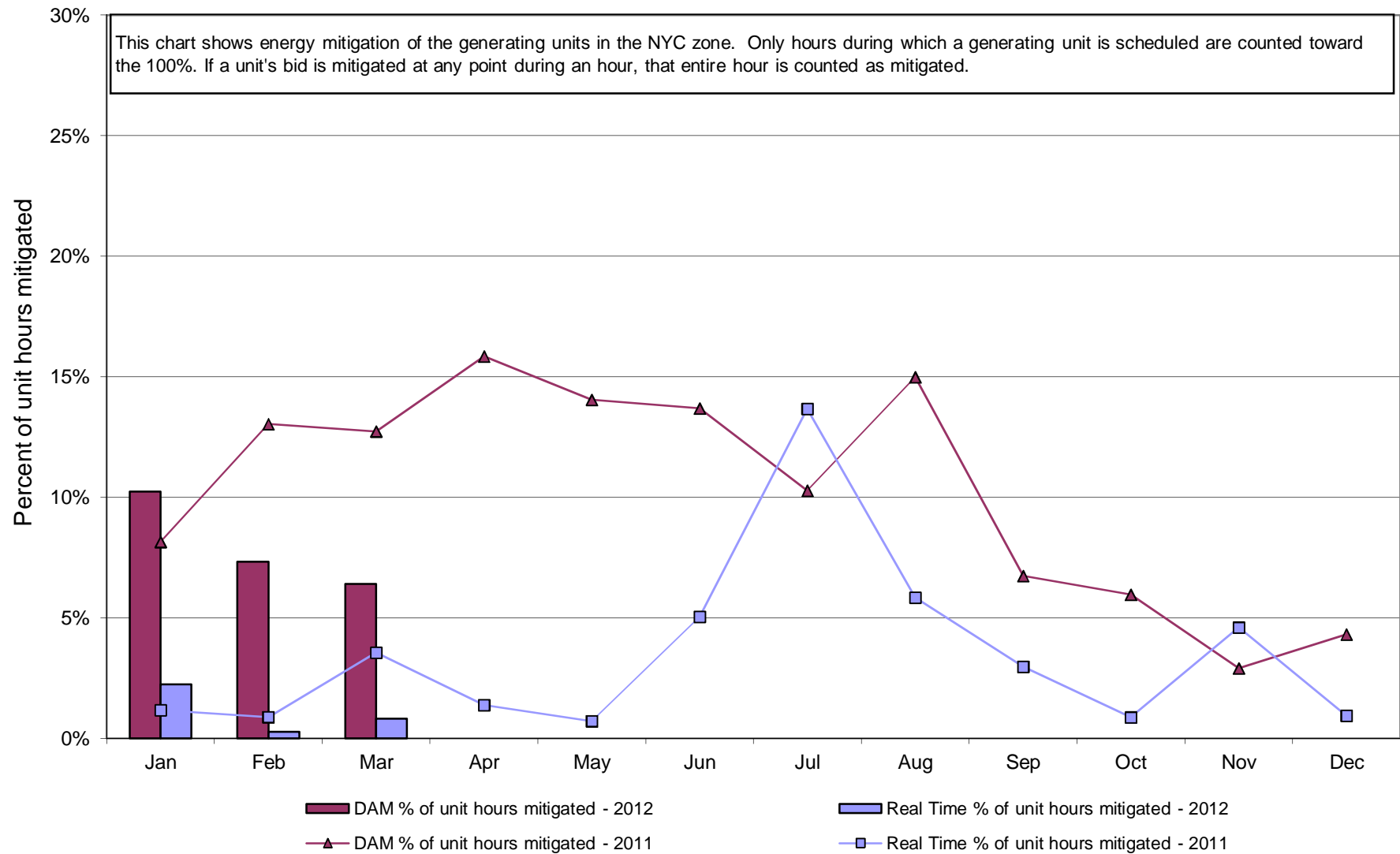


NYISO Markets Ancillary Services Statistics - Unweighted Price (\$/MWH)

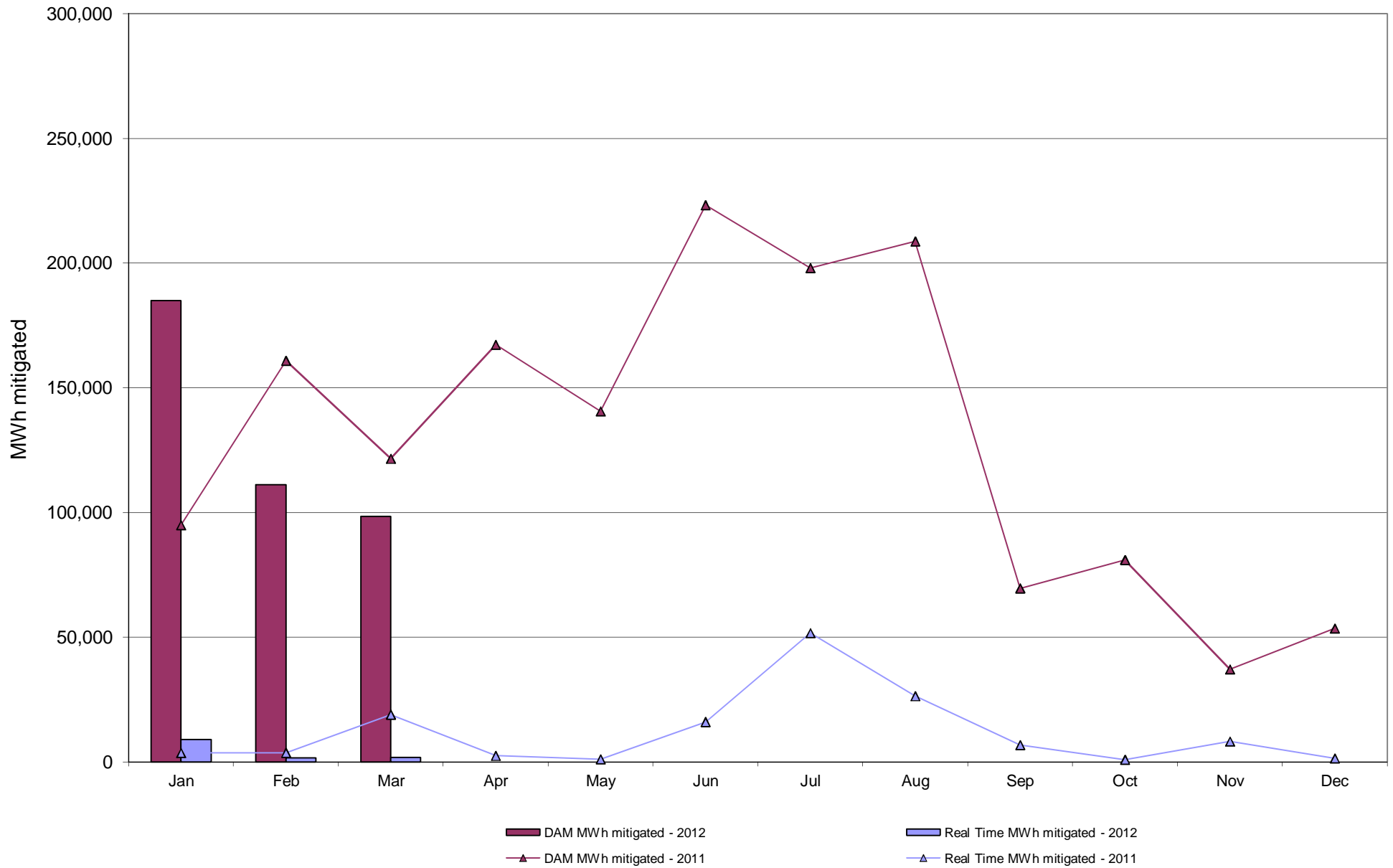
2012	January	February	March	April	May	June	July	August	September	October	November	December
Day Ahead Market												
10 Min Spin East	6.26	4.01	7.11									
10 Min Spin West	1.34	0.56	3.46									
10 Min Non Synch East	4.71	3.64	3.85									
10 Min Non Synch West	0.15	0.18	0.22									
30 Min East	0.15	0.18	0.22									
30 Min West	0.15	0.18	0.22									
Regulation East	9.01	7.11	11.33									
Regulation West	9.01	7.11	11.33									
RTC Market												
10 Min Spin East	2.64	0.99	4.49									
10 Min Spin West	2.16	0.55	3.43									
10 Min Non Synch East	0.17	0.13	0.75									
10 Min Non Synch West	0.00	0.00	0.15									
30 Min East	0.00	0.00	0.00									
30 Min West	0.00	0.00	0.00									
Regulation East	10.31	7.31	13.30									
Regulation West	10.31	7.31	13.30									
Real Time Market												
10 Min Spin East	2.21	1.61	5.38									
10 Min Spin West	1.89	1.09	4.00									
10 Min Non Synch East	0.03	0.17	1.01									
10 Min Non Synch West	0.00	0.00	0.13									
30 Min East	0.00	0.00	0.00									
30 Min West	0.00	0.00	0.00									
Regulation East	10.49	7.89	14.46									
Regulation West	10.49	7.89	14.46									
2011	January	February	March	April	May	June	July	August	September	October	November	December
Day Ahead Market												
10 Min Spin East	10.15	10.66	8.76	8.87	9.30	7.35	7.18	4.47	5.46	7.76	4.48	4.72
10 Min Spin West	4.55	4.56	4.67	4.72	4.30	3.80	3.12	2.42	2.62	3.15	1.32	1.25
10 Min Non Synch East	4.99	5.48	3.90	3.60	4.75	3.51	4.10	2.19	2.75	4.62	3.33	3.55
10 Min Non Synch West	0.02	0.02	0.02	0.03	0.03	0.10	0.17	0.19	0.15	0.14	0.18	0.17
30 Min East	0.02	0.02	0.02	0.03	0.03	0.10	0.17	0.19	0.15	0.14	0.18	0.17
30 Min West	0.02	0.02	0.02	0.03	0.03	0.10	0.17	0.19	0.15	0.14	0.18	0.17
Regulation East	19.14	16.33	13.53	11.34	10.51	14.26	15.29	10.23	8.32	8.02	7.01	7.85
Regulation West	19.14	16.33	13.53	11.34	10.51	14.26	15.29	10.23	8.32	8.02	7.01	7.85
RTC Market												
10 Min Spin East	3.32	1.88	2.96	1.74	3.52	6.74	11.34	7.84	4.33	3.84	3.46	2.47
10 Min Spin West	0.83	0.89	2.37	1.23	3.05	2.03	6.33	3.04	2.38	2.23	2.41	2.08
10 Min Non Synch East	1.48	0.25	0.04	0.05	0.35	4.69	7.23	5.54	0.91	0.10	0.37	0.09
10 Min Non Synch West	0.00	0.00	0.00	0.00	0.15	0.07	2.51	1.31	0.16	0.00	0.01	0.00
30 Min East	0.00	0.00	0.00	0.00	0.00	0.13	1.01	0.47	0.00	0.00	0.00	0.00
30 Min West	0.00	0.00	0.00	0.00	0.00	0.07	1.00	0.45	0.00	0.00	0.00	0.00
Regulation East	18.91	15.65	14.60	12.59	12.77	16.54	18.93	14.03	10.24	9.62	9.16	10.18
Regulation West	18.91	15.65	14.60	12.59	12.77	16.54	18.93	14.03	10.24	9.62	9.16	10.18
Real Time Market												
10 Min Spin East	4.59	2.12	2.61	1.74	4.49	6.52	12.08	8.94	4.75	3.03	3.72	2.24
10 Min Spin West	1.25	1.12	1.92	1.26	3.92	2.23	6.66	3.27	2.12	1.50	2.49	1.86
10 Min Non Synch East	2.31	0.35	0.19	0.13	0.37	4.38	8.52	6.60	1.71	0.21	0.77	0.15
10 Min Non Synch West	0.02	0.02	0.00	0.00	0.10	0.18	3.31	1.44	0.17	0.00	0.16	0.00
30 Min East	0.00	0.00	0.00	0.00	0.00	0.24	3.22	0.52	0.00	0.00	0.00	0.00
30 Min West	0.00	0.00	0.00	0.00	0.00	0.18	2.47	0.50	0.00	0.00	0.00	0.00
Regulation East	20.34	16.65	14.48	12.57	14.17	17.94	21.72	15.41	10.51	9.34	9.53	10.32
Regulation West	20.34	16.65	14.48	12.57	14.17	17.94	21.72	15.41	10.51	9.34	9.53	10.32

NYISO In City Energy Mitigation - AMP (NYC Zone) 2011 - 2012

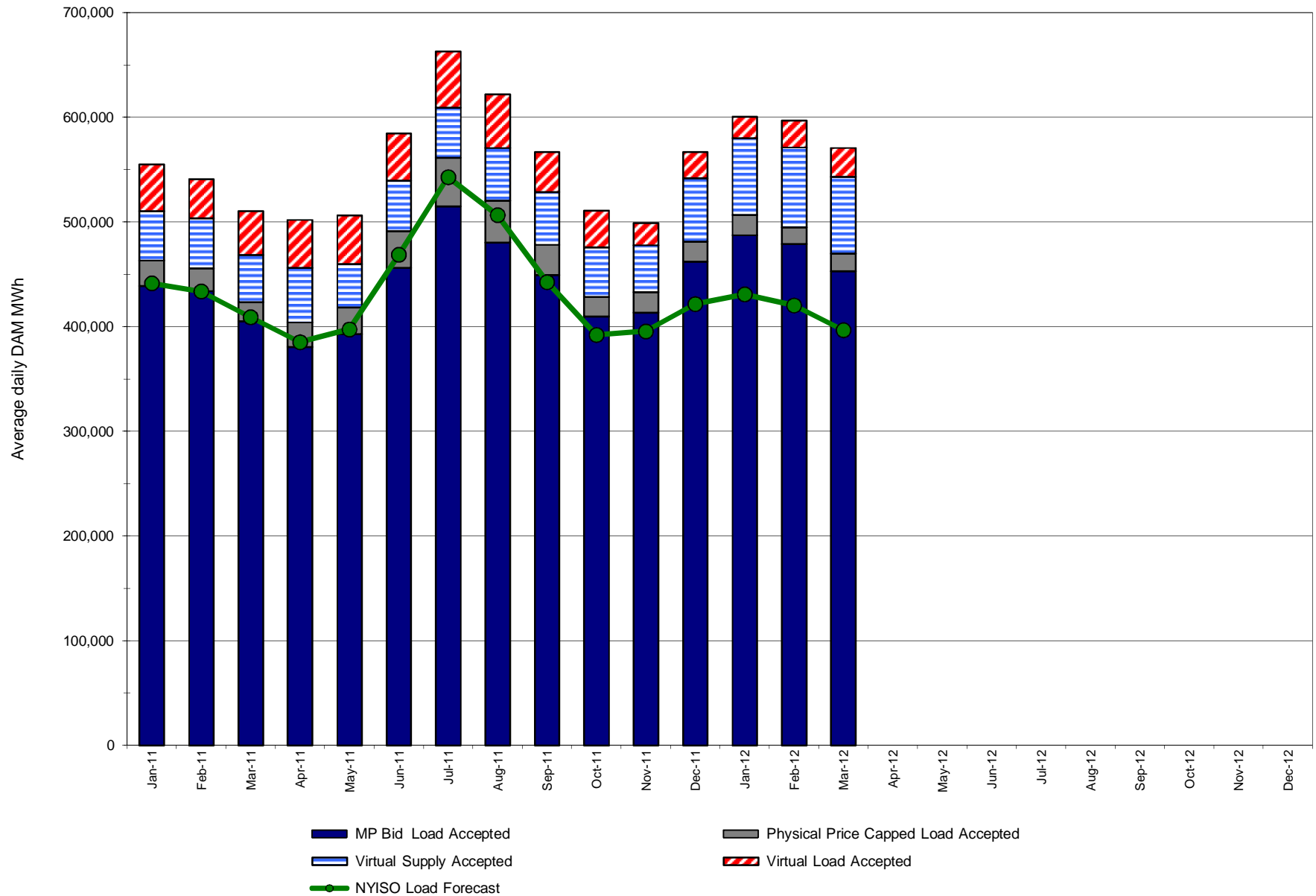
Percentage of committed unit-hours mitigated



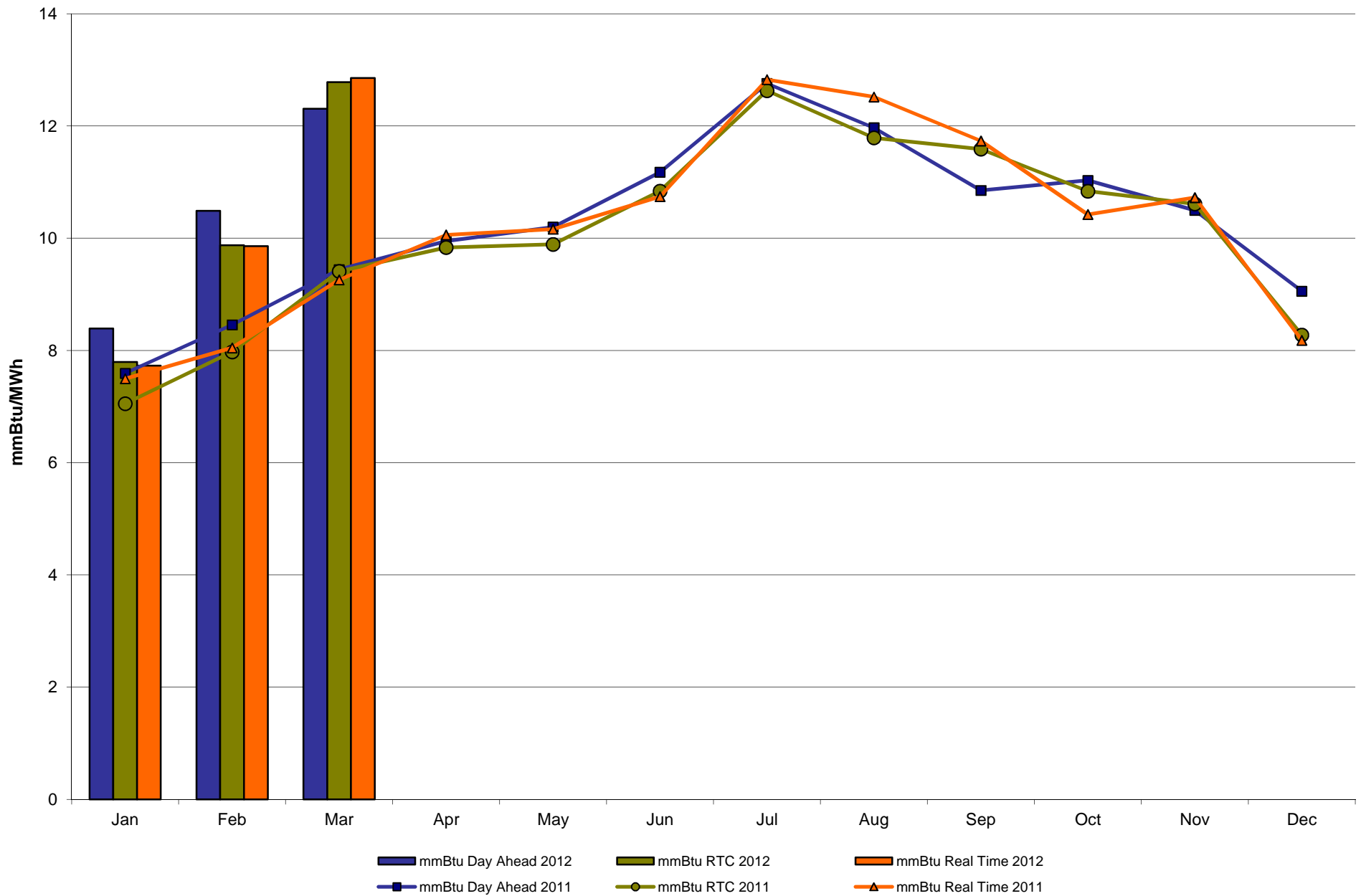
NYISO In City Energy Mitigation (NYC Zone) 2011 - 2012
Monthly megawatt hours mitigated



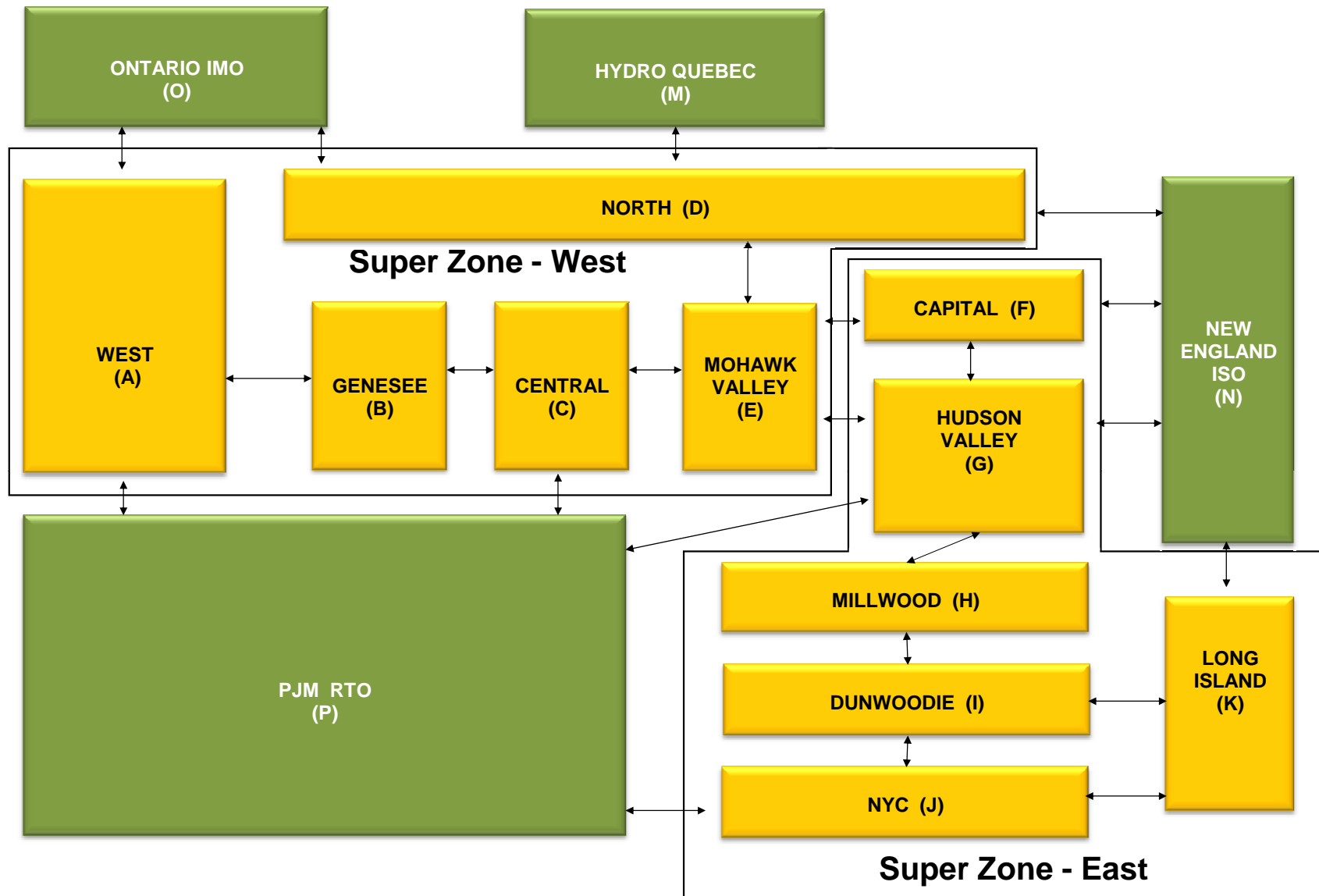
NYISO Average Daily DAM Load Bid Summary



Monthly Implied Heat Rate 2011-2012



NYISO LBMP ZONES



Billing Codes for Chart 4-C

<u>Chart 4-C Category Name</u>	<u>Billing Code</u>	<u>Billing Category Name</u>
Bid Production Cost Guarantee Balancing	81203	Balancing NYISO Bid Production Cost Guarantee - Internal Units
Bid Production Cost Guarantee Balancing	81204	Balancing NYISO Bid Production Cost Guarantee - External Units
Bid Production Cost Guarantee Balancing	81205	Balancing NYISO Bid Production Cost Guarantee Expenditure due to Curtailed Imports
Bid Production Cost Guarantee Balancing	81208	Balancing NYISO Bid Production Cost Guarantee - Internal Units
Bid Production Cost Guarantee Balancing	81209	Balancing NYISO Bid Production Cost Guarantee - External Units
Bid Production Cost Guarantee Balancing	81213	Balancing NYISO Bid Production Cost Guarantee Expenditure due to Curtailed Imports
Bid Production Cost Guarantee DAM	81201	DAM NYISO Bid Production Cost Guarantee - Internal Units
Bid Production Cost Guarantee DAM	84001	EDRP/SCR Demand Response - Local
Bid Production Cost Guarantee DAM	84101	EDRP/SCR Demand Response - NYISO Wide
Bid Production Cost Guarantee DAM	81401	DAM Price Responsive Load Program
Bid Production Cost Guarantee DAM	81202	DAM NYISO Bid Production Cost Guarantee - External Units
Bid Production Cost Guarantee DAM	81206	DAM NYISO Bid Production Cost Guarantee - Internal Units
Bid Production Cost Guarantee DAM	81207	DAM NYISO Bid Production Cost Guarantee - External Units
Bid Production Cost Guarantee DAM Virtual	81501	DAM Virtual Bid Production Cost Guarantee
DAM Contract Balancing	81315	DAM Contract Balancing
DAM Contract Balancing	81317	DAM Contract Balancing
Local Reliability Balancing	81002	Balancing Local Reliability Bid Production Cost Guarantee
Local Reliability Balancing	83901	Margin Restoration (MOB) Revenue
Local Reliability DAM	81001	DAM Local Reliability Bid Production Cost Guarantee
NYISO Cost of Operations	80901	NYISO Cost Of Operations
NYISO Cost of Operations	80902	NYISO Cost Of Operations
NYISO Cost of Operations	83501	NYISO Cost Of Operations
NYISO Cost of Operations	83502	NYISO Cost Of Operations
Residuals Balancing	81302	Balancing Market Energy Residual
Residuals Balancing	81304	Balancing Market Loss Residual
Residuals Balancing	81305	Balancing Market Congestion Balancing
Residuals Balancing	81306	Emergency Energy Purchases
Residuals Balancing	81307	Emergency Energy Sales
Residuals Balancing	81309	Balancing Market Energy Residual
Residuals Balancing	81311	Balancing Market Loss Residual
Residuals Balancing	81312	Balancing Market Congestion Balancing
Residuals Balancing	81313	Emergency Energy Purchases
Residuals Balancing	81314	Emergency Energy Sales
Residuals DAM	81301	Day Ahead Market Energy Residual
Residuals DAM	81303	Day Ahead Market Loss Residual
Residuals DAM	81308	Day Ahead Market Energy Residual
Residuals DAM	81310	Day Ahead Market Loss Residual

Summary Description of Upcoming Regulatory Compliance Filings, FERC Rulemakings, and Recent Submitted Filings and Issued Orders on NYISO Matters

Upcoming Compliance Filings

Filing Due Date	Upcoming Compliance Filings (Description)	Docket Number	Comments
04/30/2012	Compliance re: FERC Order No. 755 frequency regulation in compensation in the organized wholesale power markets	RM11-7-000, AD10-11-000	NYISO compliance filing to develop a two-part payment protocol for frequency regulation resources
04/30/2012	Order 741 credit reform compliance filing re: making NYISO a central counterparty to market transactions	ER11-3949-000	3 separate filings: 1) NYISO tariff revisions; 2) NYISO/NYSRC joint filing to revise the NYISO/NYSRC Agreement; and 3) NYISO/NYTO joint filing to revise the NYISO/NYTO Agreement
04/30/2012	Tariff revisions to explain non-historic fixed price TCC rules or LTFTRs	ER07-521-000	Revisions to OATT and MST Section 1, OATT Attachment M, MST Attachment K, and OATT Attachment N
05/01/2012	NYISO compliance filing re: Market-to-Market coordination process tariff revisions.	ER12-718-00	3/15/12 FERC order conditionally accepting 12/30/11 M2M interregional transactions filing for Lake Erie region but directing submission of remaining tariff revisions to implement M2M Coordination Process and other concerns
05/10/2012	NYISO compliance filing re: interface pricing tariff revisions	ER08-1281-010	3/15/12 FERC order directing a further compliance filing to include proposed tariff changes, supporting documentation, all relevant rates, terms and/or conditions of the proposal; 4/10/12 FERC notice extending compliance deadline to 5/10/12
09/21/2012	Order 745 compliance filing re: demand response compensation	RM10-17-000	3/15/11 Order No. 745 - FERC requires each RTO and ISO to undertake a study examining the requirements for and impacts of implementing a dynamic approach which incorporates the billing unit effect in the dispatch algorithm to determine when paying demand response resources the LMP results in net benefits to customers in both the day-ahead and real-time energy markets
10/01/2012	NYISO informational report on efforts to develop rules addressing compensation to generators that are determined to be needed for reliability	ER10-2220-000	10/12/10 Order on proposed mitigation measures directing NYISO to file an informational report every 180 days
10/11/2012	Order 1000 compliance filing re: regional planning and cost allocation	RM10-23-000	Compliance filing addressing all elements of the Order except for interregional planning and cost allocation.
12/01/2012	Annual status report re: non-historic fixed price TCCs	ER07-521-000	NYISO to inform FERC that the plan to offer non-historic FPTCCs within the multi-duration TCC auction platform has been pushed out one year to the fall of 2013
12/20/2012	Compliance filing re: annual ICAP demand curve report	ER03-647- ---, ER01-3001- ---	Annual compliance report re: ICAP demand curve

12/20/2012	Compliance filing re: semi-annual report on new generation projects	ER03-647- ---, ER01-3001- ---	Semi-annual compliance report re: new generation projects
01/15/2013	Compliance filing re: semi-annual demand response report	ER01-3001- ---	Semi-annual compliance report re: demand response – may include submission of public and non-public materials

Recent Orders Received

Filing Date	Filing Summary (Order issued)	Docket Number	Order Date	Order Summary
12/21/2011	NYISO 205 filing re: revisions to MMP to delegate oversight of the MMA to the COO	ER12-650-000	02/02/2012	FERC letter order accepting revisions effective 02/22/12 as requested
12/22/2011	NYISO 205 filing re: exemption of solar-fueled generators from Scheduling and DA bidding requirements	ER12-666-000	02/02/2012	FERC letter order accepting revisions effective 02/20/12 as requested
12/22/2011	NYISO annual compliance e-filing re: new interface pricing software	ER08-1281-010	03/15/2012	FERC order directing a further compliance filing to include proposed tariff changes, supporting documentation, all relevant rates, terms and/or conditions of the proposal
12/30/2011	NYISO Compliance Filing of Market to Market Coordination revisions to the NYISO/PJM JOA	ER08-1281-000, ER12-718-000	03/15/2012	FERC order conditionally accepting the compliance filing subject to a further compliance filing due 05/1/12
11/28/2011 01/06/2012	Seneca Power Partners complaint v. NYISO re: improper determination of reference levels per Services Tariff Attachment H – mitigation measures	EL12-6-000	03/22/2012	FERC order dismissing in part and denying in part the complaint
02/14/2012	NYISO and RG&E joint 205 filing of SGIA No. 1829 re: Browns Race Facility	ER12-1086-000	03/22/2012	FERC letter order accepting SGIA effective 01/27/12, as requested
03/22/2012	NYISO filing of a request for limited tariff waiver, MST Sections 5.12.11.1.1 and 5.12.11.1.2, regarding registration of specific SCRs	ER12-1322-000	04/03/2012	FERC letter order granting tariff waiver as requested
04/10/2012	NYISO filing of a request for an extension of time to file compliance re: interface pricing	ER08-1281-010	04/10/2012	FERC notice granting a filing extension until 05/10/2012
12/28/2011 12/30/2011	NYISO 205 filing of Coordinated Transaction Scheduling (“CTS”) tariff revisions	ER12-701-000 and 001	04/19/2012	FERC order accepting CTS tariff revisions subject to compliance prior to CTS becoming operational

Recent Submitted Filings

Filing Date	Filing Summary	Docket Number
03/15/2012	NYISO letter to NYSDEC re: NYISOs comments on DEC regulation on CO2 performance on major electric generating facilities	
03/16/2012	NYISO filing of a motion to intervene and comment re: support off ISO New England's 02/24/2012 filing regarding Coordinated Transaction Scheduling.	ER12-1155-000
03/19/2012	NYISO filing of errata to its motion to intervene and comment in support of ISO New England's filing regarding Coordinated Transaction Scheduling	ER12-1155-000
03/22/2012	NYISO filing of a motion to intervene in the Constellation Energy Commodities Group, Inc. settlement fund proceeding	IN12-7-000
03/22/2012	NYISO filing of a request for limited waiver to allow the NYISO to maintain the registration of certain Special Case Resources in the ICAP Market during the Summer 2011 Capability Period	ER12-1322-000
03/23/2012	NYISO letter to FERC deferring its filing of comments on Standards for Business Practices for Interstate Gas Pipelines and Gas and electricity coordination program to Docket No. AD12-12-000 (to be filed on 3/30/12)	RM96-1-037
03/30/2012	NYISO request for public hearing, expedited action and extension of time re: NYISO compliance Filing on tariff revision on interface pricing	ER08-1281-010
03/30/2012	NYISO joint Comments on Commissioners Moeller and LaFleur questions on Gas and Electricity coordination issue	AD12-12-000
03/30/2012	NYISO Comments on Commissioners Moeller and LaFleur questions re: Gas and Electricity coordination issues	AD12-12-000
03/30/2012	NYISO compliance third status report to D.C. Circuit re: status of NYISO efforts to secure a tax ruling re: the impact of NYISO compliance with Order 741a on NYISO tax exemptions credit rule.	Case No:11-1114 RM10-13-000
04/02/2012	NYISO Annual Compliance Report Regarding Unreserved Use and Late Study Penalties	OA12-3-000
04/03/2012	NYISO Response to the Answer of the Independent Market Monitor for PJM that was submitted in response to NYISO's March 30, 2012 Request to Convene an On-the-Record Technical Conference	ER08-1281-010
04/04/2012	NYISO compliance filing re: Report on efforts to develop rules addressing compensation to generators that are determined to be needed for reliability	ER10-2220-000
04/05/2012	NYISO filing of tariff revisions re: Order No. 741, MP verification of risk management procedures	ER11-3949-004
04/10/2012	NYISO filing of a Presentation and Talking Points for a Requested Technical Conference on Interface Pricing	ER08-1281-010
04/12/2012	NYISO filing of comments on TC Ravenswood Black Start Rate Schedule filing	ER12-1418-000
04/13/2012	NYISO filing of a preliminary answer to the Complaint by Energy Spectrum, Inc. and Riverbay Corporation re: Technical Bulletin No. 217 and behind the meter generation issues	EL12-56-000
04/16/2012	NYISO filing of a Request for Rehearing and Request to Defer Consideration of FERC's March 15, 2012 order regarding a New Interface Pricing Policy	ER08-1281-010

04/19/2012	NYISO filing of an answer to the Energy Spectrum and Riverbay complaint regarding Tech Bulletin 217, and request for expedited action	EL12-56-000
------------	---	-------------