

For Discussion Only



1150

Building the Energy Markets of Tomorrow . . . Today

DSS - Custom ADD

Overview

DSSTF - 10/18/05



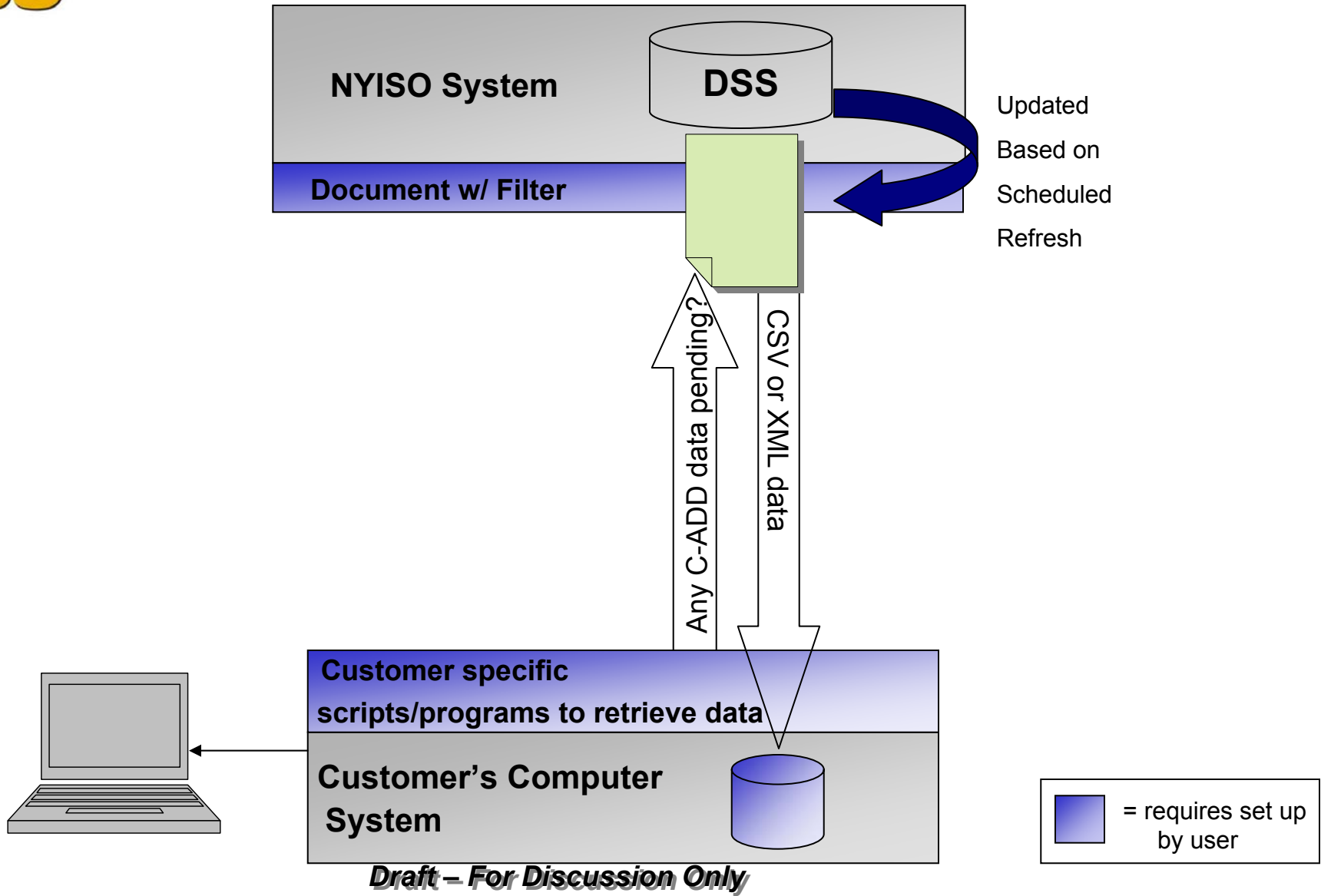
Custom ADD allows machine-to-machine interface where user's have an automated process that delivers the report generated by DSS to their “end machine” at their frequency and specifications.

Draft – For Discussion Only

Who should use Custom ADD?

Any user of DSS data who would like to load data into their own computer system, without user interaction, on a regularly scheduled basis.

Draft – For Discussion Only



Draft – For Discussion Only



What Custom ADD Is

- ✓ Provides users with ability to custom define their own files and schedule them to be delivered via ADD-like interface
- ✓ All Universes in the DSS are available
- ✓ All Objects in the Universes are available

Draft – For Discussion Only



What Custom ADD Is

- ✓ **Limits – same as DSS Universes/Corporate Reports**
 - *Rows – 1.2 mm resultant rows*
 - *Time – 40 minutes query execution time*
 - *Limits may need to be lowered if hardware limits are exceeded*
- ✓ **Data is delivered via CSV file format and/or XML file format**

Draft – For Discussion Only



What Custom ADD Is Not

- ✓ **Scope of data available in the DSS has not changed for Custom ADD**
- ✓ **Frequency of data refreshes in DSS has not changed for Custom ADD – updates still once per day**
- ✓ **Scope of data refreshes in DSS has not changed for Custom ADD – only data that supports bills spun on a given day is updated**

Draft – For Discussion Only



What Custom ADD Is Not

- ✓ **Data contained in files is limited to data only (no graphics, special formatting, etc)**
- ✓ **Users are not able to split custom reports defined in WebIntelligence into multiple files in ADD (i.e. 1 custom report will yield 1 file per execution in Custom ADD)**

Draft – For Discussion Only

Custom ADD ≠ ADD

	ADD	Custom ADD
Icon		
User's Actions	Submit a request via ADD	Create Report in WebIntelligence Save, Send, Schedule Document
Availability	After daily load, files are displayed after <u>all</u> ADD files are completed	After daily load and all ADD files are complete. Each CADD file is displayed after it is completed
Manual Retrieval	<p>Alternate Data Delivery (ADD) Links</p> <ul style="list-style-type: none"> Retrieve Files Enter New Request View/Modify/Delete Request for Files 	<div style="border: 1px solid blue; padding: 5px;"> <p>Personal Documents</p> <p>Access the documents you saved for your personal use, as well as the documents other users have sent to you.</p> <p> Inbox</p> </div>
Automatic Retrieval	User created scripts	User created scripts with error handling logic

Draft – For Discussion Only



Process Mechanics

- ✓ Create a new document in Webintelligence
- ✓ Must use a Custom ADD Filter (Date/Version)
 - *Cannot ask for a specific date/version*
- ✓ Send and Schedule the document in InfoView
- ✓ Custom reports generated after completion of Customer Statement csv files
- ✓ Report in “Inbox”
- ✓ Machine-to-machine interface delivers data to end user’s machine

Draft – For Discussion Only

Example Document Query

- ✓ Only one universe/document
- ✓ Need to know order of data and elements
- ✓ Use Custom ADD Filters

The screenshot displays the 'WebIntelligence Java Report Panel' in a Microsoft Internet Explorer browser. The interface is divided into several sections:

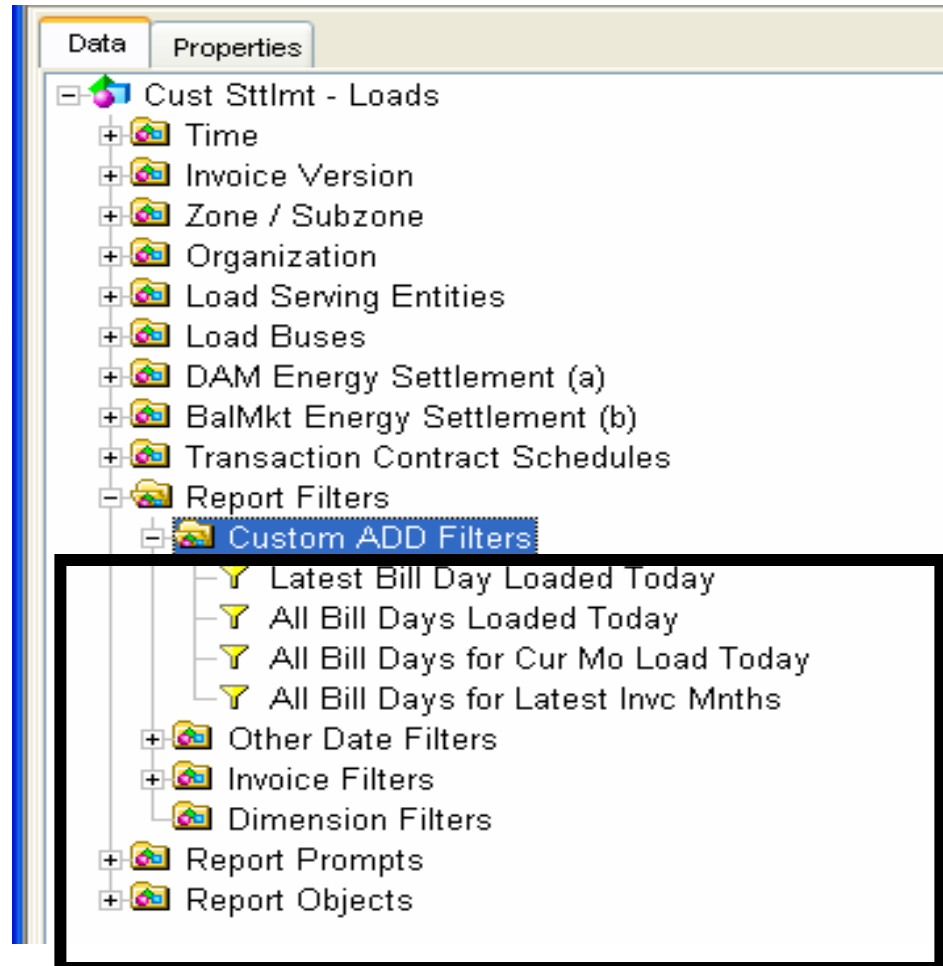
- Query:** Contains 'Edit Query' and 'Edit Report' buttons, and a 'Run Query' button.
- Data:** A tree view on the left shows a hierarchy of data elements under 'Cust St:Imt - Loads'. The 'Report Filters' folder is expanded, showing 'Custom ADD Filters' with sub-items: 'Latest Bill Day Loaded Today', 'All Bill Days Loaded Today', 'All Bill Days for Current Month', and 'All Bill Days for Latest Invoice'. Other filters include 'Other Date Filters' and 'Invoice Filters'.
- Result Objects:** A list of objects to be included in the report, including 'Org Name', 'LSE Name', 'Interval Start Day (Eastern)', and several 'Day BalMkt' objects for Energy, Loss, Congestion, and Total Settlement, all measured in LSE (\$).
- Query Filters:** A section containing the selected filter 'Latest Bill Day Loaded Today'.

At the bottom, a status bar indicates 'Daily-level data that is a summation of a load serving entity's SCD-level settlement results for balancing energy (energy, loss and congestion) in the NY ISO market' and 'Applet Java_Rsport_Panel started'.

Draft – For Discussion Only



Report: Filters and Prompts



Draft – For Discussion Only



“Open” Document in InfoView

NEW YORK INDEPENDENT SYSTEM OPERATOR
Building The Energy Markets Of Tomorrow...Today

Decision Support System

Account Admin

Personal Documents

Personal Categories > **All Documents**

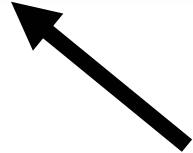
 Search

[Advanced...](#)

23 Document(s) [View Details](#) [Add to My InfoView](#)

List refreshed: 08/30/2005 03:58:40 PM

Name ▲	From	Date	Size	
Calculate this!	goyetmi1	06/16/2005 11:04:28 AM	31 K	<input type="checkbox"/>
Charts	goyetmi1	04/28/2005 08:12:03 AM	39 K	<input type="checkbox"/>
Class Exercise Auto Sum A (1-3)	goyetmi1	05/26/2005 02:20:47 PM	69 K	<input type="checkbox"/>
Class Exercises	goyetmi1	04/25/2005 09:01:35 PM	73 K	<input type="checkbox"/>
Class Ex on Blue to pink	goyetmi1	06/21/2005 12:56:48 PM	26 K	<input type="checkbox"/>
Creating Variables	goyetmi1	04/26/2005 02:23:48 PM	32 K	<input type="checkbox"/>
Customized Report	goyetmi1	08/30/2005 03:58:40 PM	101 K	<input type="checkbox"/>

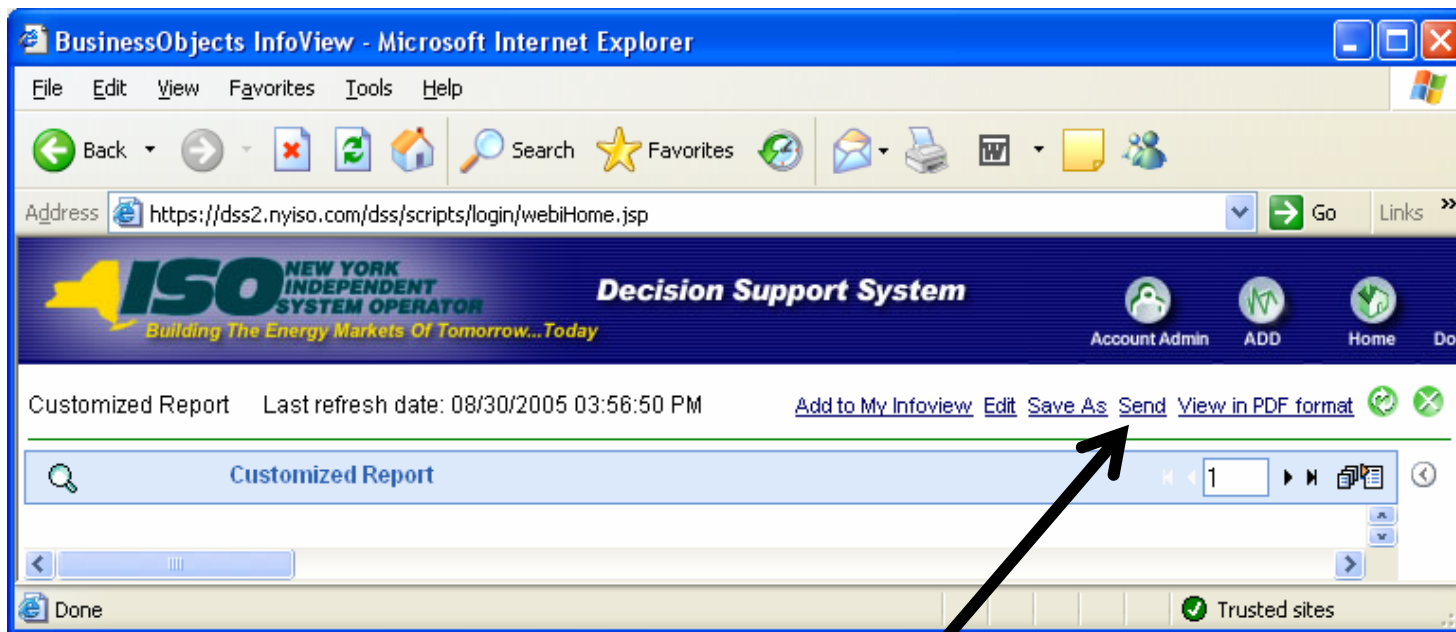


Click on Document

Draft – For Discussion Only



Select Send



After Document is opened, Select "Send"

Draft – For Discussion Only



Scheduled Refresh

1. Select and Set Frequency
2. Select Refresh Options
3. Set BCA Prompt

1.

2.

3.

Draft - For Di

Customized Report for CADD

Send this document to other users

Main Users **Scheduled Refresh**

* Frequency: Daily

Every: 1 week(s)

* Day(s) of the week: Monday, Tuesday, Wednesday, Thursday, Friday, Saturday, Sunday

* Time: 09 : 45 AM (hh:mm)

* Start Date: September / 28 / 2005

* Expiration Date: September / 28 / 2065

Refresh Options:

- Overwrite with each refresh
- Refresh according to profile of each recipient.
- Refresh only once per group according to its reference profile
- Custom ADD

[Set BCA Prompt](#)

* indicates a required field

OK Close Apply