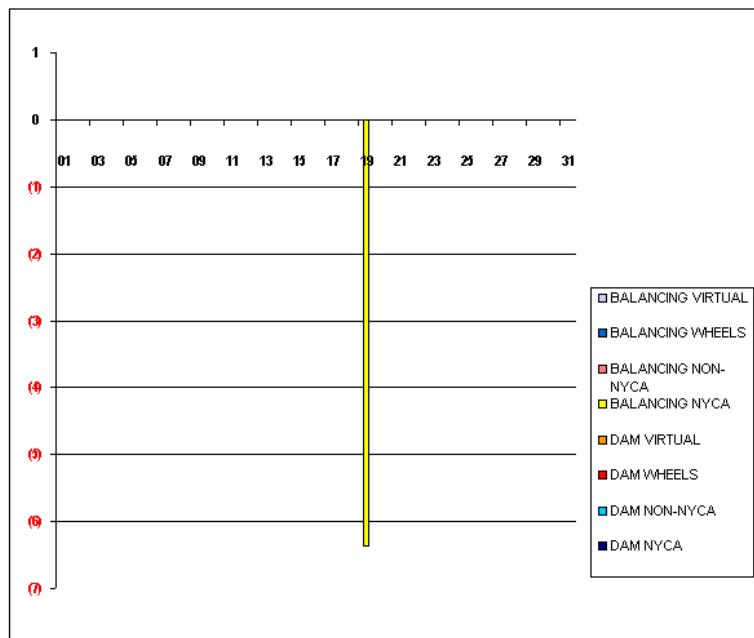


SETTLEMENTS REPORT
July 2010 Close-Out Settlement
April 6, 2011

Close-Out Settlement – Market Supply Delta Analysis

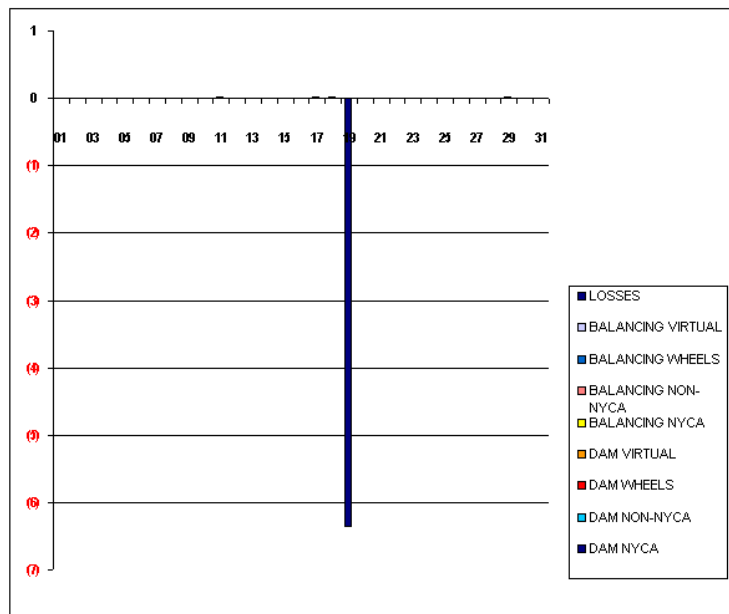
	MONDAY	TUESDAY	WEDNESDAY	THURSDAY	FRIDAY	SATURDAY	SUNDAY
				1	2	3	4
DAM NYCA				0	0	0	0
DAM NON-NYCA				0	0	0	0
DAM WHEELS				0	0	0	0
DAM VIRTUAL				0	0	0	0
BALANCING NYCA				0	0	0	0
BALANCING NON-NYCA				0	0	0	0
BALANCING WHEELS				0	0	0	0
BALANCING VIRTUAL				0	0	0	0
	5	6	7	8	9	10	11
DAM NYCA	0	0	0	0	0	0	0
DAM NON-NYCA	0	0	0	0	0	0	0
DAM WHEELS	0	0	0	0	0	0	0
DAM VIRTUAL	0	0	0	0	0	0	0
BALANCING NYCA	0	0	0	0	0	0	0
BALANCING NON-NYCA	0	0	0	0	0	0	0
BALANCING WHEELS	0	0	0	0	0	0	0
BALANCING VIRTUAL	0	0	0	0	0	0	0
	12	13	14	15	16	17	18
DAM NYCA	0	0	0	0	0	0	0
DAM NON-NYCA	0	0	0	0	0	0	0
DAM WHEELS	0	0	0	0	0	0	0
DAM VIRTUAL	0	0	0	0	0	0	0
BALANCING NYCA	0	0	0	0	0	0	0
BALANCING NON-NYCA	0	0	0	0	0	0	0
BALANCING WHEELS	0	0	0	0	0	0	0
BALANCING VIRTUAL	0	0	0	0	0	0	0
	19	20	21	22	23	24	25
DAM NYCA	0	0	0	0	0	0	0
DAM NON-NYCA	0	0	0	0	0	0	0
DAM WHEELS	0	0	0	0	0	0	0
DAM VIRTUAL	0	0	0	0	0	0	0
BALANCING NYCA	(6)	0	0	0	0	0	0
BALANCING NON-NYCA	0	0	0	0	0	0	0
BALANCING WHEELS	0	0	0	0	0	0	0
BALANCING VIRTUAL	0	0	0	0	0	0	0
	26	27	28	29	30	31	
DAM NYCA	0	0	0	0	0	0	
DAM NON-NYCA	0	0	0	0	0	0	
DAM WHEELS	0	0	0	0	0	0	
DAM VIRTUAL	0	0	0	0	0	0	
BALANCING NYCA	0	0	0	0	0	0	
BALANCING NON-NYCA	0	0	0	0	0	0	
BALANCING WHEELS	0	0	0	0	0	0	
BALANCING VIRTUAL	0	0	0	0	0	0	



SETTLEMENTS REPORT
July 2010 Close-Out Settlement
April 6, 2011

Close-Out Settlement – Market Withdrawals Delta Analysis

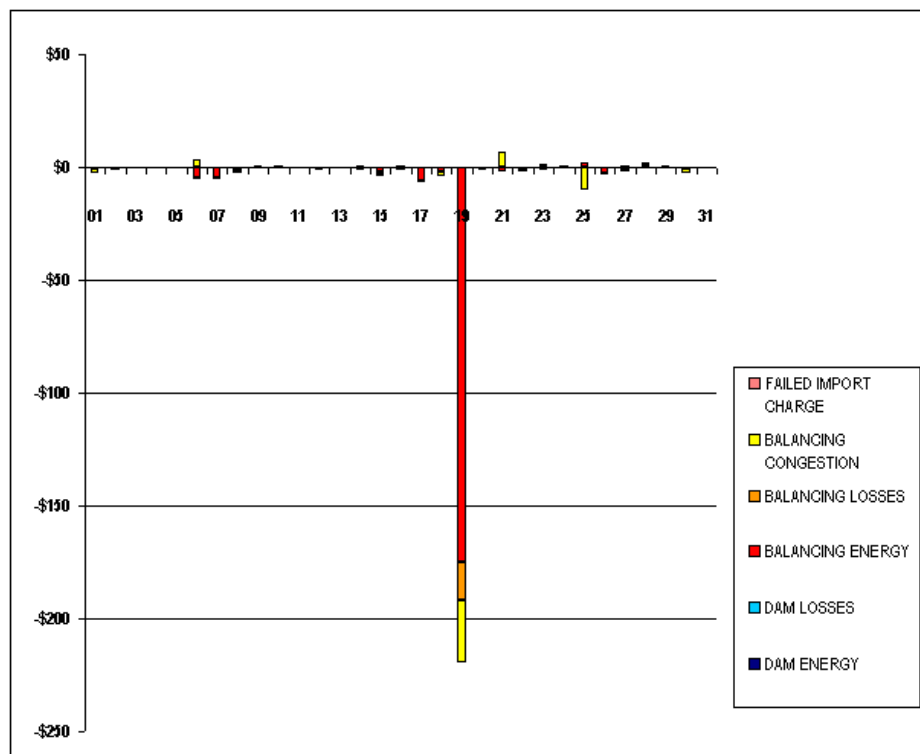
	MONDAY	TUESDAY	WEDNESDAY	THURSDAY	FRIDAY	SATURDAY	SUNDAY
				1	2	3	4
DAM NYCA				0	0	0	0
DAM NON-NYCA				0	0	0	0
DAM WHEELS				0	0	0	0
DAM VIRTUAL				0	0	0	0
BALANCING NYCA				(0)	(0)	(0)	(0)
BALANCING NON-NYCA				0	0	0	0
BALANCING WHEELS				0	0	0	0
BALANCING VIRTUAL				0	0	0	0
UFE/LOSSES				0	0	0	0
	5	6	7	8	9	10	11
DAM NYCA	0	0	0	0	0	0	0
DAM NON-NYCA	0	0	0	0	0	0	0
DAM WHEELS	0	0	0	0	0	0	0
DAM VIRTUAL	0	0	0	0	0	0	0
BALANCING NYCA	(0)	(0)	(0)	(0)	(0)	(0)	0
BALANCING NON-NYCA	0	0	0	0	0	0	0
BALANCING WHEELS	0	0	0	0	0	0	0
BALANCING VIRTUAL	0	0	0	0	0	0	0
UFE/LOSSES	0	0	0	0	0	0	(0)
	12	13	14	15	16	17	18
DAM NYCA	0	0	0	0	0	0	0
DAM NON-NYCA	0	0	0	0	0	0	0
DAM WHEELS	0	0	0	0	0	0	0
DAM VIRTUAL	0	0	0	0	0	0	0
BALANCING NYCA	(0)	(0)	(0)	0	(0)	0	0
BALANCING NON-NYCA	0	0	0	0	0	0	0
BALANCING WHEELS	0	0	0	0	0	0	0
BALANCING VIRTUAL	0	0	0	0	0	0	0
UFE/LOSSES	0	0	0	(0)	0	(0)	(0)
	19	20	21	22	23	24	25
DAM NYCA	0	0	0	0	0	0	0
DAM NON-NYCA	0	0	0	0	0	0	0
DAM WHEELS	0	0	0	0	0	0	0
DAM VIRTUAL	0	0	0	0	0	0	0
BALANCING NYCA	(0)	(0)	(0)	(0)	(0)	(0)	(0)
BALANCING NON-NYCA	0	0	0	0	0	0	0
BALANCING WHEELS	0	0	0	0	0	0	0
BALANCING VIRTUAL	0	0	0	0	0	0	0
UFE/LOSSES	(6)	0	0	0	0	0	0
	26	27	28	29	30	31	
DAM NYCA	0	0	0	0	0	0	
DAM NON-NYCA	0	0	0	0	0	0	
DAM WHEELS	0	0	0	0	0	0	
DAM VIRTUAL	0	0	0	0	0	0	
BALANCING NYCA	(0)	(0)	(0)	0	(0)	(0)	
BALANCING NON-NYCA	0	0	0	0	0	0	
BALANCING WHEELS	0	0	0	0	0	0	
BALANCING VIRTUAL	0	0	0	0	0	0	
UFE/LOSSES	0	0	0	(0)	0	0	



SETTLEMENTS REPORT
July 2010 Close-Out Settlement
April 6, 2011

Close-Out Settlement – Market Residuals Delta Analysis

	MONDAY	TUESDAY	WEDNESDAY	THURSDAY	FRIDAY	SATURDAY	SUNDAY
				1	2	3	4
DAM ENERGY				\$0.00	\$0.00	(\$0.01)	\$0.00
DAM LOSSES				\$0.00	\$0.00	\$0.00	\$0.00
BALANCING ENERGY				(\$0.71)	(\$1.09)	(\$0.24)	(\$0.36)
BALANCING LOSSES				(\$0.10)	(\$0.14)	(\$0.03)	(\$0.03)
BALANCING CONGESTION				(\$2.02)	\$0.00	(\$0.01)	\$0.16
FAILED IMPORT CHARGE				\$0.00	(\$0.02)	\$0.00	(\$0.01)
	5	6	7	8	9	10	11
DAM ENERGY	\$0.00	\$0.00	\$0.00	\$0.00	\$0.00	\$0.00	\$0.00
DAM LOSSES	\$0.00	\$0.00	\$0.00	\$0.00	\$0.00	\$0.00	\$0.00
BALANCING ENERGY	(\$0.45)	(\$4.92)	(\$4.79)	(\$1.52)	\$0.68	(\$0.45)	(\$0.09)
BALANCING LOSSES	(\$0.04)	(\$0.52)	(\$0.68)	(\$0.18)	\$0.07	(\$0.01)	(\$0.02)
BALANCING CONGESTION	(\$0.14)	\$3.45	\$0.32	(\$1.18)	(\$0.58)	\$0.35	(\$0.47)
FAILED IMPORT CHARGE	\$0.01	\$0.01	\$0.01	\$0.03	\$0.03	\$0.01	\$0.00
	12	13	14	15	16	17	18
DAM ENERGY	\$0.00	\$0.00	\$0.00	\$0.00	\$0.00	\$0.00	\$0.00
DAM LOSSES	\$0.00	\$0.00	\$0.00	\$0.00	\$0.00	\$0.00	\$0.00
BALANCING ENERGY	(\$1.43)	(\$0.02)	(\$1.15)	(\$2.30)	(\$0.90)	(\$6.15)	(\$1.72)
BALANCING LOSSES	(\$0.18)	\$0.00	(\$0.09)	(\$0.25)	(\$0.12)	(\$0.41)	(\$0.23)
BALANCING CONGESTION	\$0.16	(\$0.33)	\$0.37	(\$1.29)	\$0.73	\$0.00	(\$1.91)
FAILED IMPORT CHARGE	\$0.05	\$0.00	\$0.00	\$0.03	\$0.00	\$0.00	\$0.00
	19	20	21	22	23	24	25
DAM ENERGY	\$0.00	(\$0.01)	\$0.00	\$0.00	\$0.00	\$0.00	\$0.00
DAM LOSSES	\$0.00	\$0.00	\$0.00	\$0.00	\$0.00	\$0.01	\$0.00
BALANCING ENERGY	(\$175.01)	(\$0.93)	(\$1.72)	(\$1.12)	(\$1.13)	\$0.03	\$2.17
BALANCING LOSSES	(\$16.72)	(\$0.08)	(\$0.26)	(\$0.10)	(\$0.11)	(\$0.01)	\$0.13
BALANCING CONGESTION	(\$28.07)	(\$0.58)	\$6.44	(\$0.55)	\$1.19	\$0.58	(\$10.27)
FAILED IMPORT CHARGE	(\$0.01)	\$0.00	(\$0.05)	(\$0.01)	(\$0.02)	(\$0.03)	(\$0.01)
	26	27	28	29	30	31	
DAM ENERGY	\$0.00	\$0.01	\$0.00	\$0.00	\$0.01	\$0.00	
DAM LOSSES	\$0.00	\$0.00	\$0.00	\$0.00	\$0.00	\$0.00	
BALANCING ENERGY	(\$2.45)	(\$1.54)	\$0.31	\$0.78	(\$0.62)	\$0.14	
BALANCING LOSSES	(\$0.19)	(\$0.16)	\$0.04	\$0.09	(\$0.06)	\$0.01	
BALANCING CONGESTION	(\$0.56)	\$0.65	\$1.55	(\$0.50)	(\$1.77)	(\$0.11)	
FAILED IMPORT CHARGE	\$0.00	(\$0.02)	\$0.01	(\$0.03)	\$0.02	(\$0.05)	

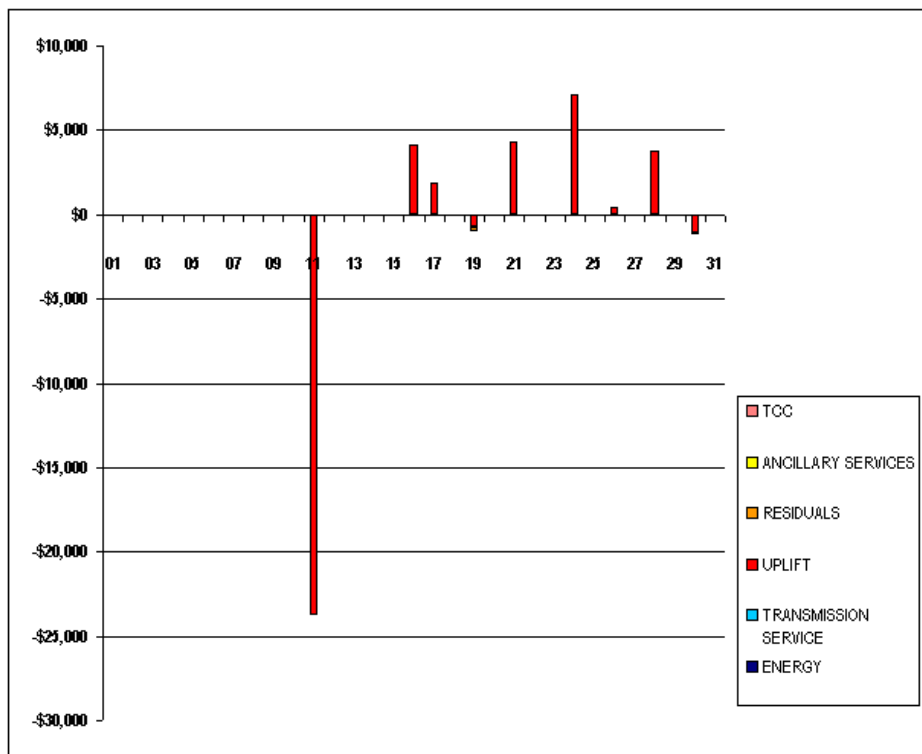


FOR DISCUSSION PURPOSES ONLY

SETTLEMENTS REPORT
July 2010 Close-Out Settlement
April 6, 2011

Close-Out Settlement – Market Costs Delta Analysis

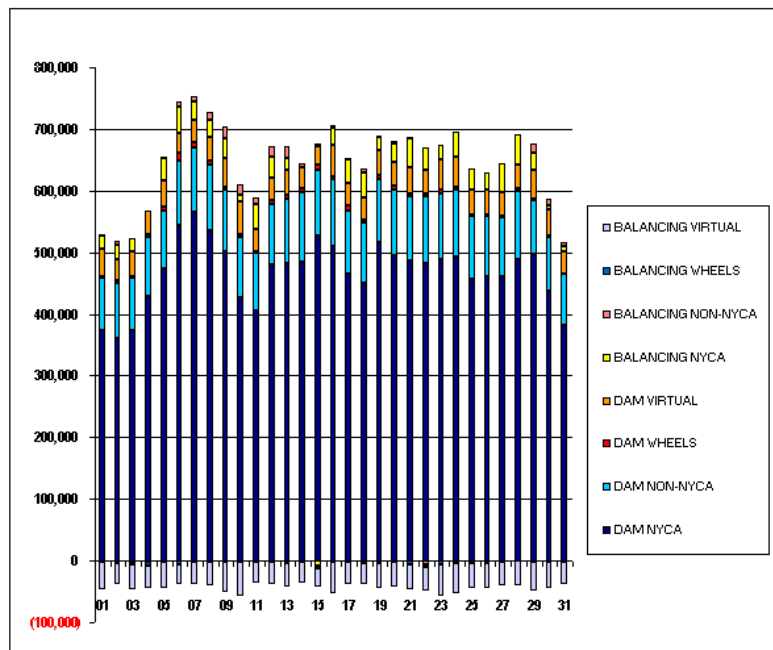
	MONDAY	TUESDAY	WEDNESDAY	THURSDAY	FRIDAY	SATURDAY	SUNDAY
				1	2	3	4
ENERGY				\$2.80	\$1.20	\$0.39	\$0.21
TRANSMISSION SERVICE				\$0.01	\$0.01	\$0.00	\$0.00
UPLIFT				\$0.00	\$0.00	\$0.00	\$0.00
RESIDUALS				(\$2.83)	(\$1.25)	(\$0.29)	(\$0.24)
ANCILLARY SERVICES				\$0.01	\$0.00	\$0.01	\$0.00
TCC				\$0.00	\$0.00	\$0.00	\$0.00
	5	6	7	8	9	10	11
ENERGY	\$0.54	\$1.82	\$5.04	\$2.83	(\$0.08)	(\$0.06)	\$0.42
TRANSMISSION SERVICE	\$0.00	\$0.01	\$0.01	\$0.01	\$0.00	\$0.00	\$0.00
UPLIFT	\$0.00	\$5.08	\$0.03	(\$0.03)	\$0.00	\$0.00	(\$23,779.11)
RESIDUALS	(\$0.62)	(\$1.98)	(\$5.14)	(\$2.85)	\$0.20	(\$0.10)	(\$0.58)
ANCILLARY SERVICES	\$0.00	\$0.01	\$0.00	\$0.00	\$0.00	\$0.00	\$0.02
TCC	\$0.00	\$0.00	\$0.00	\$0.00	\$0.00	\$0.00	\$0.00
	12	13	14	15	16	17	18
ENERGY	\$1.35	\$0.39	\$0.78	\$3.74	\$0.38	\$5.67	\$3.97
TRANSMISSION SERVICE	\$0.00	\$0.00	\$0.00	\$0.00	\$0.01	\$0.00	\$0.01
UPLIFT	\$0.00	\$0.01	\$0.00	\$0.00	\$4,100.84	\$1,913.00	(\$0.01)
RESIDUALS	(\$1.40)	(\$0.35)	(\$0.87)	(\$3.81)	(\$0.29)	(\$6.56)	(\$3.86)
ANCILLARY SERVICES	\$0.00	\$0.01	\$0.00	\$0.00	\$0.01	\$0.01	\$0.01
TCC	\$0.00	\$0.00	\$0.00	\$0.00	\$0.00	\$0.00	\$0.00
	19	20	21	22	23	24	25
ENERGY	(\$33.57)	\$1.56	(\$4.06)	\$1.87	\$0.16	(\$0.49)	\$8.10
TRANSMISSION SERVICE	\$0.01	\$0.00	\$0.01	\$0.00	\$0.00	\$0.00	\$0.00
UPLIFT	(\$747.37)	\$0.00	\$4,303.54	(\$0.05)	\$0.00	\$7,114.20	\$0.00
RESIDUALS	(\$219.81)	(\$1.60)	\$4.41	(\$1.78)	(\$0.07)	\$0.58	(\$7.98)
ANCILLARY SERVICES	\$0.01	\$0.00	\$0.00	\$0.01	\$0.00	\$0.01	\$0.00
TCC	\$0.00	\$0.00	\$0.00	\$0.00	\$0.00	\$0.00	\$0.00
	26	27	28	29	30	31	
ENERGY	\$3.37	\$1.07	(\$1.93)	(\$0.51)	\$2.67	(\$0.03)	
TRANSMISSION SERVICE	\$0.00	\$0.01	\$0.01	\$0.00	\$0.00	\$0.01	
UPLIFT	\$428.32	(\$0.01)	\$3,738.47	\$0.00	(\$1,150.88)	\$0.00	
RESIDUALS	(\$3.20)	(\$1.06)	\$1.91	\$0.34	(\$2.42)	(\$0.01)	
ANCILLARY SERVICES	\$0.00	\$0.01	\$0.00	\$0.01	\$0.00	\$0.01	
TCC	\$0.00	\$0.00	\$0.00	\$0.00	\$0.00	\$0.00	



SETTLEMENTS REPORT
July 2010 Close-Out Settlement
April 6, 2011

4-Month Settlement Adjustment – Market Supply Analysis

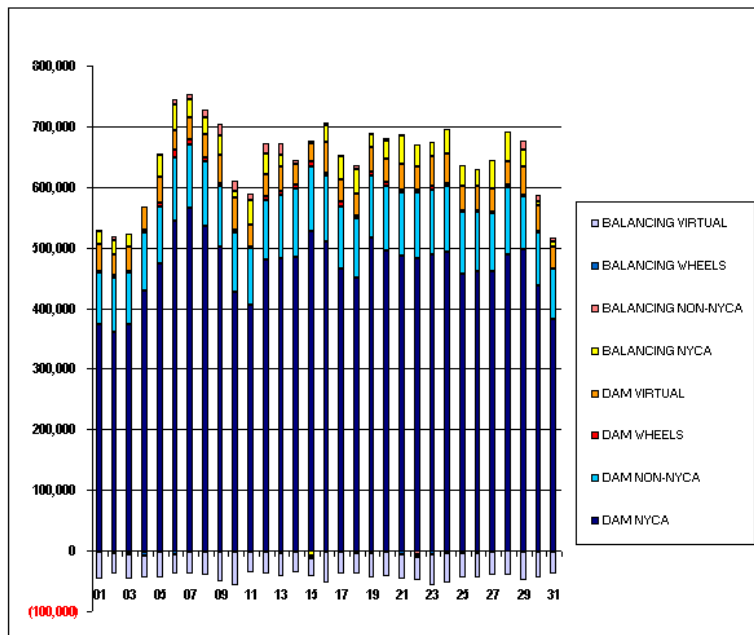
	MONDAY	TUESDAY	WEDNESDAY	THURSDAY	FRIDAY	SATURDAY	SUNDAY
				1	2	3	4
DAM NYCA				372,838	361,336	373,814	427,880
DAM NON-NYCA				85,067	89,891	85,447	96,234
DAM WHEELS				2,250	3,545	1,425	5,735
DAM VIRTUAL				45,885	34,642	41,483	37,559
BALANCING NYCA				21,970	22,550	20,735	557
BALANCING NON-NYCA				2,188	7,342	(4,154)	(2,726)
BALANCING WHEELS				(950)	(3,195)	(1,425)	(4,505)
BALANCING VIRTUAL				(45,885)	(34,642)	(41,483)	(37,559)
	5	6	7	8	9	10	11
DAM NYCA	473,329	545,027	566,345	536,270	501,138	426,419	405,251
DAM NON-NYCA	93,300	104,567	103,951	105,468	99,632	98,093	94,014
DAM WHEELS	7,235	12,660	7,285	6,735	4,885	3,981	2,735
DAM VIRTUAL	43,232	31,443	36,912	38,031	47,752	54,193	35,129
BALANCING NYCA	36,177	42,853	30,810	28,688	31,930	10,604	41,473
BALANCING NON-NYCA	2,704	8,095	7,313	12,648	18,161	16,551	10,735
BALANCING WHEELS	(1,977)	(6,105)	(1,823)	(2,056)	(2,197)	(2,435)	(1,585)
BALANCING VIRTUAL	(43,232)	(31,443)	(36,912)	(38,031)	(47,752)	(54,193)	(35,129)
	12	13	14	15	16	17	18
DAM NYCA	479,126	483,184	484,255	527,780	509,107	465,893	449,307
DAM NON-NYCA	98,998	102,703	112,655	106,656	108,923	102,841	97,638
DAM WHEELS	7,205	7,902	7,364	7,800	5,520	7,175	6,010
DAM VIRTUAL	34,743	38,923	33,547	29,055	49,910	36,635	34,641
BALANCING NYCA	35,295	20,589	(197)	(8,036)	28,511	39,249	41,178
BALANCING NON-NYCA	16,248	18,377	5,436	4,226	4,922	2,287	6,564
BALANCING WHEELS	(2,861)	(4,366)	(2,760)	(4,420)	(2,326)	(1,885)	(3,290)
BALANCING VIRTUAL	(34,743)	(38,923)	(33,547)	(29,055)	(49,910)	(36,635)	(34,641)
	19	20	21	22	23	24	25
DAM NYCA	515,740	495,890	485,565	483,094	488,390	493,908	456,965
DAM NON-NYCA	103,082	105,093	104,384	107,238	105,864	108,489	102,347
DAM WHEELS	6,771	6,417	6,005	5,777	6,491	3,561	1,899
DAM VIRTUAL	40,190	39,881	40,959	38,451	50,748	49,708	39,868
BALANCING NYCA	21,225	29,569	48,445	35,519	22,632	39,301	33,884
BALANCING NON-NYCA	1,344	4,235	1,760	(6,657)	112	(2,260)	(2,842)
BALANCING WHEELS	(4,121)	(2,858)	(5,219)	(3,571)	(6,070)	(1,925)	(967)
BALANCING VIRTUAL	(40,190)	(39,881)	(40,959)	(38,451)	(50,748)	(49,708)	(39,868)
	26	27	28	29	30	31	
DAM NYCA	461,236	460,918	487,639	497,407	437,791	382,990	
DAM NON-NYCA	97,853	95,709	111,843	87,853	87,386	81,326	
DAM WHEELS	2,400	2,350	3,850	2,091	1,730	887	
DAM VIRTUAL	40,599	39,408	39,359	46,824	43,071	37,210	
BALANCING NYCA	26,570	46,543	47,757	28,254	5,299	6,557	
BALANCING NON-NYCA	(3,337)	423	1,066	14,491	11,416	6,438	
BALANCING WHEELS	(1,366)	(1,700)	(810)	(1,075)	(1,398)	(887)	
BALANCING VIRTUAL	(40,599)	(39,408)	(39,359)	(46,824)	(43,071)	(37,210)	



SETTLEMENTS REPORT
July 2010 Close-Out Settlement
April 6, 2011

Close-Out Settlement – Market Supply Analysis

	MONDAY	TUESDAY	WEDNESDAY	THURSDAY	FRIDAY	SATURDAY	SUNDAY
				1	2	3	4
DAM NYCA				372,838	361,336	373,814	427,880
DAM NON-NYCA				85,067	89,891	85,447	96,234
DAM WHEELS				2,250	3,545	1,425	5,735
DAM VIRTUAL				45,885	34,642	41,483	37,559
BALANCING NYCA				21,970	22,550	20,735	557
BALANCING NON-NYCA				2,188	7,342	(4,154)	(2,726)
BALANCING WHEELS				(950)	(3,195)	(1,425)	(4,505)
BALANCING VIRTUAL				(45,885)	(34,642)	(41,483)	(37,559)
	5	6	7	8	9	10	11
DAM NYCA	473,329	545,027	566,345	536,270	501,138	426,419	405,251
DAM NON-NYCA	93,300	104,567	103,951	105,468	99,632	98,093	94,014
DAM WHEELS	7,235	12,660	7,285	6,735	4,885	3,981	2,735
DAM VIRTUAL	43,232	31,443	36,912	38,031	47,752	54,193	35,129
BALANCING NYCA	36,177	42,853	30,810	28,688	31,930	10,604	41,473
BALANCING NON-NYCA	2,704	8,095	7,313	12,648	18,161	16,551	10,735
BALANCING WHEELS	(1,977)	(6,105)	(1,823)	(2,056)	(2,197)	(2,435)	(1,585)
BALANCING VIRTUAL	(43,232)	(31,443)	(36,912)	(38,031)	(47,752)	(54,193)	(35,129)
	12	13	14	15	16	17	18
DAM NYCA	479,126	483,184	484,255	527,780	509,107	465,693	449,907
DAM NON-NYCA	98,998	102,703	112,655	106,656	108,923	102,841	97,638
DAM WHEELS	7,205	7,902	7,364	7,800	5,520	7,175	6,010
DAM VIRTUAL	34,743	38,923	33,547	29,055	49,910	36,635	34,641
BALANCING NYCA	35,295	20,589	(197)	(8,036)	28,511	39,249	41,178
BALANCING NON-NYCA	16,248	18,377	5,436	4,226	4,922	2,287	6,564
BALANCING WHEELS	(2,861)	(4,366)	(2,760)	(4,420)	(2,326)	(1,885)	(3,290)
BALANCING VIRTUAL	(34,743)	(38,923)	(33,547)	(29,055)	(49,910)	(36,635)	(34,641)
	19	20	21	22	23	24	25
DAM NYCA	515,740	495,890	485,565	483,094	468,390	493,908	456,965
DAM NON-NYCA	103,082	105,033	104,384	107,238	105,864	108,489	102,347
DAM WHEELS	6,771	6,417	6,005	5,777	6,491	3,561	1,899
DAM VIRTUAL	40,190	39,881	40,959	38,451	50,748	49,708	39,868
BALANCING NYCA	21,219	29,569	48,445	35,519	22,632	39,301	33,884
BALANCING NON-NYCA	1,344	4,235	1,760	(6,857)	112	(2,260)	(2,842)
BALANCING WHEELS	(4,121)	(2,858)	(5,219)	(3,571)	(6,070)	(1,925)	(967)
BALANCING VIRTUAL	(40,190)	(39,881)	(40,959)	(38,451)	(50,748)	(49,708)	(39,868)
	26	27	28	29	30	31	
DAM NYCA	461,236	460,918	487,639	497,407	437,791	382,990	
DAM NON-NYCA	97,853	95,709	111,843	87,853	87,306	81,326	
DAM WHEELS	2,400	2,350	3,850	2,091	1,730	887	
DAM VIRTUAL	40,599	39,408	39,359	46,824	43,071	37,210	
BALANCING NYCA	26,570	46,543	47,757	28,254	5,299	6,557	
BALANCING NON-NYCA	(3,337)	423	1,066	14,491	11,416	6,438	
BALANCING WHEELS	(1,366)	(1,700)	(810)	(1,075)	(1,398)	(887)	
BALANCING VIRTUAL	(40,599)	(39,408)	(39,359)	(46,824)	(43,071)	(37,210)	



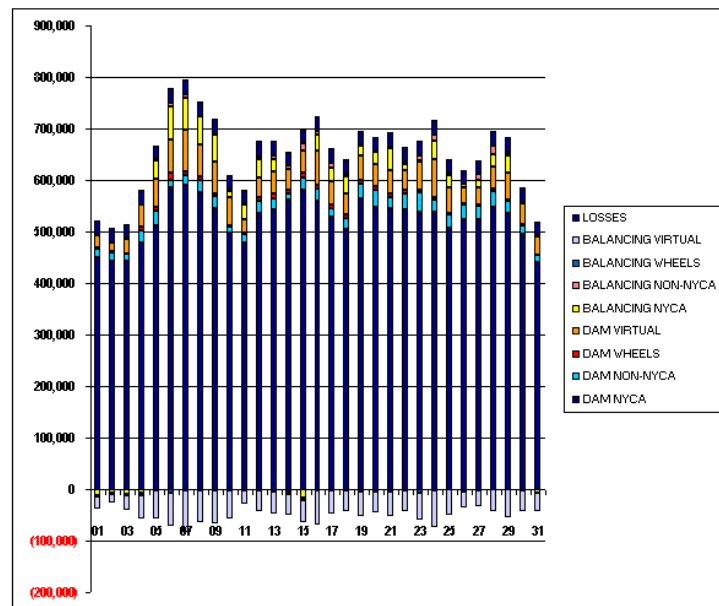
SETTLEMENTS REPORT

July 2010 Close-Out Settlement

April 6, 2011

4-Month Settlement Adjustment – Market Withdrawals Analysis

	MONDAY	TUESDAY	WEDNESDAY	THURSDAY	FRIDAY	SATURDAY	SUNDAY
				1	2	3	4
DAM NYCA				449,227	442,763	443,829	478,838
DAM NON-NYCA				16,605	15,961	13,034	24,104
DAM WHEELS				2,250	3,545	1,425	5,735
DAM VIRTUAL				24,540	15,232	28,513	44,463
BALANCING NYCA				(12,846)	(7,191)	(9,749)	(6,940)
BALANCING NON-NYCA				1,363	1,826	1,685	(1,461)
BALANCING WHEELS				(950)	(3,195)	(1,425)	(4,505)
BALANCING VIRTUAL				(24,540)	(15,232)	(28,513)	(44,463)
UFE/LOSSES				26,927	27,555	26,870	27,026
	5	6	7	8	9	10	11
DAM NYCA	512,432	586,358	591,130	575,947	546,357	497,404	478,359
DAM NON-NYCA	27,538	14,378	18,471	24,151	21,735	10,984	15,844
DAM WHEELS	7,235	12,660	7,285	6,735	4,885	3,961	2,735
DAM VIRTUAL	54,236	64,469	80,430	63,254	63,269	54,160	27,751
BALANCING NYCA	35,919	64,863	62,883	53,645	52,223	12,714	27,441
BALANCING NON-NYCA	2,889	6,258	5,844	1,174	(18)	2,087	1,931
BALANCING WHEELS	(1,977)	(6,105)	(1,823)	(2,056)	(2,197)	(2,435)	(1,585)
BALANCING VIRTUAL	(54,236)	(64,469)	(80,430)	(63,254)	(63,269)	(54,160)	(27,751)
UFE/LOSSES	26,571	26,535	29,966	28,078	30,040	28,103	27,705
	12	13	14	15	16	17	18
DAM NYCA	536,376	542,082	560,931	580,145	559,710	528,567	505,546
DAM NON-NYCA	22,789	23,334	12,795	25,608	24,724	16,394	21,735
DAM WHEELS	7,205	7,902	7,364	7,800	5,520	7,175	6,010
DAM VIRTUAL	39,060	43,342	40,559	42,529	66,633	44,969	40,150
BALANCING NYCA	35,746	24,961	(5,826)	(17,188)	31,098	26,782	34,434
BALANCING NON-NYCA	4,837	5,495	7,538	15,416	7,511	9,041	4,688
BALANCING WHEELS	(2,861)	(4,366)	(2,760)	(4,420)	(2,326)	(1,885)	(3,290)
BALANCING VIRTUAL	(39,060)	(43,342)	(40,559)	(42,529)	(66,633)	(44,969)	(40,150)
UFE/LOSSES	29,242	28,275	26,534	26,526	27,836	28,499	28,381
	19	20	21	22	23	24	25
DAM NYCA	564,488	547,860	545,547	543,254	537,546	538,999	507,377
DAM NON-NYCA	28,688	33,879	22,269	31,497	37,482	23,837	25,626
DAM WHEELS	6,771	6,417	6,005	5,777	6,491	3,561	1,899
DAM VIRTUAL	48,380	42,637	45,992	39,024	53,600	72,943	50,111
BALANCING NYCA	17,470	24,374	42,230	11,490	3,737	36,788	23,917
BALANCING NON-NYCA	2,342	(812)	2,295	3,992	9,303	10,985	5,495
BALANCING WHEELS	(4,121)	(2,858)	(5,219)	(3,571)	(6,070)	(1,925)	(967)
BALANCING VIRTUAL	(48,380)	(42,637)	(45,992)	(39,024)	(53,600)	(72,943)	(50,111)
UFE/LOSSES	27,774	29,309	27,354	28,199	27,806	28,409	27,233
	26	27	28	29	30	31	
DAM NYCA	523,891	524,136	546,891	535,366	495,150	441,466	
DAM NON-NYCA	27,491	25,741	32,849	24,382	17,913	13,577	
DAM WHEELS	2,400	2,350	3,850	2,091	1,730	887	
DAM VIRTUAL	32,824	32,732	43,051	52,761	40,947	34,551	
BALANCING NYCA	(2,378)	15,881	23,509	31,922	(322)	(6,869)	
BALANCING NON-NYCA	5,541	10,387	16,324	6,065	1,211	2,231	
BALANCING WHEELS	(1,366)	(1,700)	(810)	(1,075)	(1,398)	(887)	
BALANCING VIRTUAL	(32,824)	(32,732)	(43,051)	(52,761)	(40,947)	(34,551)	
UFE/LOSSES	27,329	27,276	27,953	29,573	27,680	26,856	



FOR DISCUSSION PURPOSES ONLY

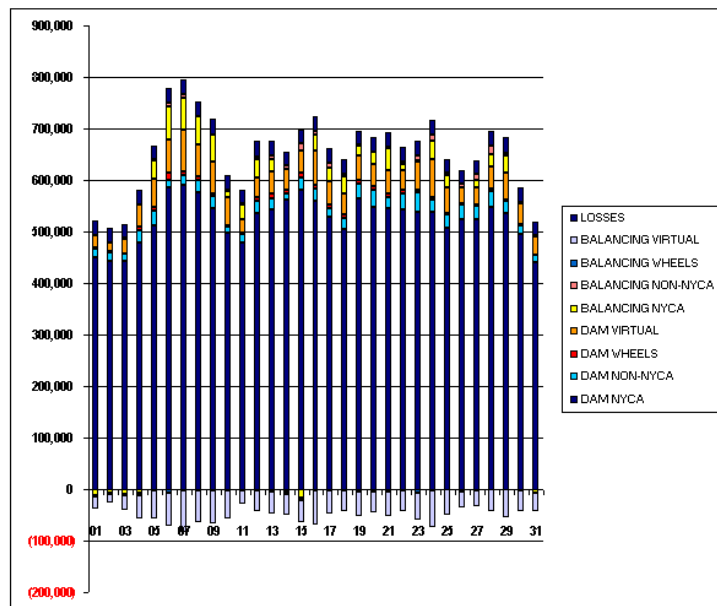
SETTLEMENTS REPORT

July 2010 Close-Out Settlement

April 6, 2011

Close-Out Settlement – Market Withdrawals Analysis

	MONDAY	TUESDAY	WEDNESDAY	THURSDAY	FRIDAY	SATURDAY	SUNDAY
				1	2	3	4
DAM NYCA				449,227	442,763	443,829	478,838
DAM NON-NYCA				16,605	15,961	13,034	24,104
DAM WHEELS				2,250	3,545	1,425	5,735
DAM VIRTUAL				24,540	15,232	28,513	44,463
BALANCING NYCA				(12,846)	(7,191)	(9,749)	(6,940)
BALANCING NON-NYCA				1,363	1,826	1,685	(1,461)
BALANCING WHEELS				(950)	(3,195)	(1,425)	(4,505)
BALANCING VIRTUAL				(24,540)	(15,232)	(28,513)	(44,463)
UFE/LOSSES				26,927	27,555	26,870	27,026
	5	6	7	8	9	10	11
DAM NYCA	512,432	586,358	591,130	575,947	546,357	497,404	478,359
DAM NON-NYCA	27,538	14,378	18,471	24,151	21,735	10,984	15,844
DAM WHEELS	7,235	12,660	7,285	6,735	4,885	3,961	2,735
DAM VIRTUAL	54,236	64,469	80,430	63,254	63,269	54,160	27,751
BALANCING NYCA	35,919	64,863	62,883	53,645	52,223	12,714	27,441
BALANCING NON-NYCA	2,889	6,258	5,844	1,174	(18)	2,087	1,931
BALANCING WHEELS	(1,977)	(6,105)	(1,823)	(2,056)	(2,197)	(2,435)	(1,585)
BALANCING VIRTUAL	(54,236)	(64,469)	(80,430)	(63,254)	(63,269)	(54,160)	(27,751)
UFE/LOSSES	26,571	26,535	29,966	28,078	30,040	28,103	27,705
	12	13	14	15	16	17	18
DAM NYCA	536,376	542,082	560,931	580,145	559,710	528,567	505,546
DAM NON-NYCA	22,789	23,334	12,795	25,608	24,724	16,394	21,735
DAM WHEELS	7,205	7,902	7,364	7,800	5,520	7,175	6,010
DAM VIRTUAL	39,060	43,342	40,559	42,529	66,633	44,969	40,150
BALANCING NYCA	35,746	24,961	(5,826)	(17,188)	31,098	26,782	34,434
BALANCING NON-NYCA	4,837	5,495	7,538	15,416	7,511	9,041	4,688
BALANCING WHEELS	(2,861)	(4,366)	(2,760)	(4,420)	(2,326)	(1,885)	(3,290)
BALANCING VIRTUAL	(39,060)	(43,342)	(40,559)	(42,529)	(66,633)	(44,969)	(40,150)
UFE/LOSSES	29,242	28,275	26,534	26,526	27,836	28,499	28,381
	19	20	21	22	23	24	25
DAM NYCA	564,488	547,860	545,547	543,254	537,546	538,999	507,377
DAM NON-NYCA	28,688	33,879	22,269	31,497	37,482	23,837	25,626
DAM WHEELS	6,771	6,417	6,005	5,777	6,491	3,561	1,899
DAM VIRTUAL	48,380	42,637	45,992	39,024	53,600	72,943	50,111
BALANCING NYCA	17,470	24,374	42,230	11,490	3,737	36,788	23,917
BALANCING NON-NYCA	2,342	(812)	2,295	3,992	9,303	10,985	5,495
BALANCING WHEELS	(4,121)	(2,858)	(5,219)	(3,571)	(6,070)	(1,925)	(967)
BALANCING VIRTUAL	(48,380)	(42,637)	(45,992)	(39,024)	(53,600)	(72,943)	(50,111)
UFE/LOSSES	27,768	29,309	27,354	28,199	27,806	28,409	27,233
	26	27	28	29	30	31	
DAM NYCA	523,891	524,136	546,891	535,366	495,150	441,466	
DAM NON-NYCA	27,491	25,741	32,849	24,382	17,913	13,577	
DAM WHEELS	2,400	2,350	3,850	2,091	1,730	887	
DAM VIRTUAL	32,824	32,732	43,051	52,761	40,947	34,551	
BALANCING NYCA	(2,378)	15,881	23,509	31,922	(322)	(6,869)	
BALANCING NON-NYCA	5,541	10,387	16,324	6,065	1,211	2,231	
BALANCING WHEELS	(1,366)	(1,700)	(810)	(1,075)	(1,398)	(887)	
BALANCING VIRTUAL	(32,824)	(32,732)	(43,051)	(52,761)	(40,947)	(34,551)	
UFE/LOSSES	27,329	27,276	27,953	29,573	27,680	26,856	

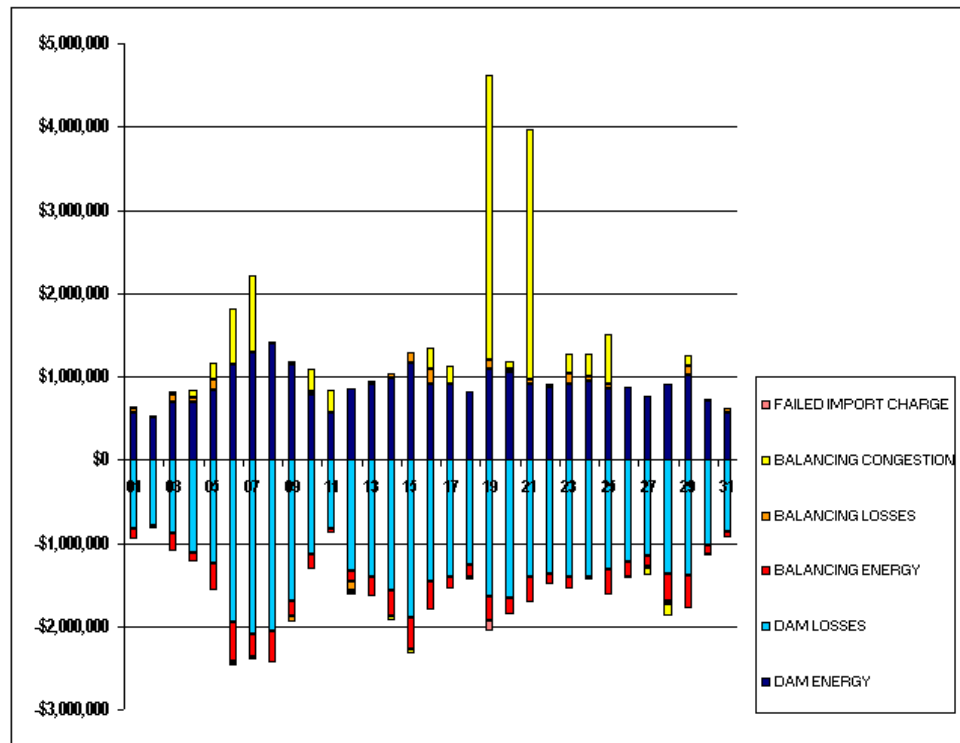


FOR DISCUSSION PURPOSES ONLY

SETTLEMENTS REPORT
July 2010 Close-Out Settlement
April 6, 2011

4-Month Settlement Adjustment – Market Residuals Analysis

	MONDAY	TUESDAY	WEDNESDAY	THURSDAY	FRIDAY	SATURDAY	SUNDAY
				1	2	3	4
DAM ENERGY				\$559,614.28	\$504,715.48	\$688,750.82	\$683,347.03
DAM LOSSES				(\$823,474.32)	(\$795,331.96)	(\$862,081.05)	(\$1,110,939.44)
BALANCING ENERGY				(\$122,497.22)	(\$35,829.91)	(\$223,614.66)	(\$118,488.18)
BALANCING LOSSES				\$55,761.03	\$27,622.28	\$96,380.36	\$70,221.95
BALANCING CONGESTION				\$24,068.43	\$3,518.09	\$35,711.58	\$87,601.09
FAILED IMPORT CHARGE				(\$32.77)	(\$328.83)	\$0.00	(\$2.60)
	5	6	7	8	9	10	11
DAM ENERGY	\$841,084.91	\$1,148,875.61	\$1,295,125.75	\$1,389,661.95	\$1,135,769.67	\$780,764.42	\$561,903.79
DAM LOSSES	(\$1,237,558.14)	(\$1,954,756.96)	(\$2,093,210.11)	(\$2,065,500.16)	(\$1,693,301.57)	(\$1,137,677.09)	(\$825,080.13)
BALANCING ENERGY	(\$329,266.13)	(\$466,312.60)	(\$271,064.46)	(\$364,475.38)	(\$188,772.07)	(\$171,635.95)	(\$57,295.94)
BALANCING LOSSES	\$128,939.10	(\$44,393.80)	(\$37,368.14)	(\$2,381.05)	(\$64,033.23)	\$34,025.87	(\$2,750.54)
BALANCING CONGESTION	\$184,365.88	\$662,309.09	\$925,279.63	\$31,931.95	\$41,925.26	\$277,925.54	\$276,028.96
FAILED IMPORT CHARGE	(\$1,427.72)	(\$2,076.45)	(\$4,162.74)	(\$3,135.75)	(\$478.28)	(\$818.91)	\$0.00
	12	13	14	15	16	17	18
DAM ENERGY	\$852,029.78	\$905,278.35	\$983,810.03	\$1,168,826.92	\$917,440.19	\$907,545.36	\$810,037.17
DAM LOSSES	(\$1,330,261.14)	(\$1,415,415.17)	(\$1,574,856.71)	(\$1,892,009.29)	(\$1,453,961.27)	(\$1,404,594.06)	(\$1,264,081.77)
BALANCING ENERGY	(\$123,913.17)	(\$221,022.82)	(\$301,861.92)	(\$380,651.11)	(\$356,952.44)	(\$150,535.04)	(\$144,956.83)
BALANCING LOSSES	(\$118,481.93)	\$7,756.73	\$57,702.91	\$128,807.72	\$181,609.99	(\$1,727.60)	(\$27,592.73)
BALANCING CONGESTION	(\$41,974.54)	\$24,822.55	(\$55,029.39)	(\$58,877.87)	\$252,892.01	\$225,653.58	(\$1,127.08)
FAILED IMPORT CHARGE	(\$1,096.58)	\$0.00	(\$218.47)	(\$41.79)	(\$994.52)	\$0.00	\$0.00
	19	20	21	22	23	24	25
DAM ENERGY	\$1,082,810.52	\$1,049,199.53	\$912,729.59	\$882,281.92	\$917,674.36	\$940,287.61	\$854,990.04
DAM LOSSES	(\$1,644,759.29)	(\$1,669,294.08)	(\$1,408,715.72)	(\$1,373,317.32)	(\$1,412,664.16)	(\$1,408,114.91)	(\$1,315,106.18)
BALANCING ENERGY	(\$292,096.96)	(\$183,972.14)	(\$300,255.45)	(\$131,941.69)	(\$144,549.49)	(\$29,923.71)	(\$311,800.11)
BALANCING LOSSES	\$114,942.51	\$35,036.11	\$47,166.48	\$24,627.80	\$124,924.97	\$63,509.02	\$61,395.71
BALANCING CONGESTION	\$3,422,922.04	\$89,993.48	\$3,010,956.02	\$8,627.74	\$220,200.88	\$265,551.76	\$588,606.08
FAILED IMPORT CHARGE	(\$126,682.50)	(\$0.75)	(\$517.78)	(\$1,369.13)	(\$56.73)	(\$554.60)	(\$879.49)
	26	27	28	29	30	31	
DAM ENERGY	\$864,464.94	\$759,878.13	\$917,663.26	\$1,018,584.40	\$708,596.10	\$566,824.86	
DAM LOSSES	(\$1,232,512.20)	(\$1,154,706.03)	(\$1,369,027.15)	(\$1,385,629.19)	(\$1,030,423.79)	(\$867,052.31)	
BALANCING ENERGY	(\$168,831.84)	(\$128,191.66)	(\$328,708.04)	(\$405,662.92)	(\$109,836.71)	(\$61,379.65)	
BALANCING LOSSES	\$10,043.61	(\$10,590.55)	(\$26,893.02)	\$99,795.19	\$13,774.63	\$50,157.70	
BALANCING CONGESTION	(\$18,050.79)	(\$96,435.06)	(\$153,469.19)	\$142,267.89	(\$15,589.55)	(\$14,306.14)	
FAILED IMPORT CHARGE	(\$22.80)	(\$457.85)	(\$1,537.44)	(\$588.43)	(\$89.40)	(\$687.77)	

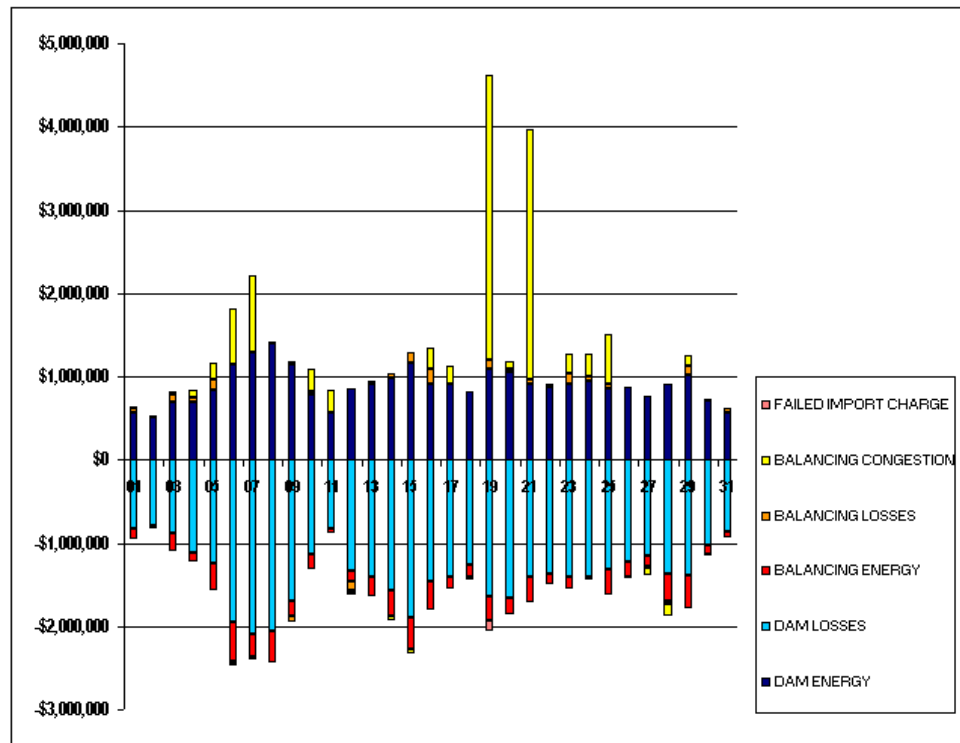


FOR DISCUSSION PURPOSES ONLY

SETTLEMENTS REPORT
July 2010 Close-Out Settlement
April 6, 2011

Close-Out Settlement – Market Residuals Analysis

	MONDAY	TUESDAY	WEDNESDAY	THURSDAY	FRIDAY	SATURDAY	SUNDAY
				1	2	3	4
DAM ENERGY				\$559,614.28	\$504,715.48	\$688,750.81	\$683,347.03
DAM LOSSES				(\$823,474.32)	(\$795,331.96)	(\$862,081.05)	(\$1,110,939.44)
BALANCING ENERGY				(\$122,497.93)	(\$35,831.00)	(\$223,614.90)	(\$118,488.54)
BALANCING LOSSES				\$55,760.93	\$27,622.14	\$96,380.33	\$70,221.92
BALANCING CONGESTION				\$24,066.41	\$3,518.09	\$35,711.57	\$87,601.25
FAILED IMPORT CHARGE				(\$32.77)	(\$328.85)	\$0.00	(\$2.61)
	5	6	7	8	9	10	11
DAM ENERGY	\$841,084.91	\$1,148,875.61	\$1,295,125.75	\$1,389,661.95	\$1,135,769.67	\$780,764.42	\$561,903.79
DAM LOSSES	(\$1,237,558.14)	(\$1,954,756.96)	(\$2,093,210.11)	(\$2,065,500.16)	(\$1,693,301.57)	(\$1,137,677.09)	(\$825,080.13)
BALANCING ENERGY	(\$329,266.58)	(\$466,317.52)	(\$271,069.27)	(\$364,476.90)	(\$188,771.39)	(\$171,636.40)	(\$57,296.03)
BALANCING LOSSES	\$128,939.06	(\$44,394.32)	(\$37,368.82)	(\$2,381.23)	(\$64,033.16)	\$34,025.86	(\$2,750.56)
BALANCING CONGESTION	\$184,365.74	\$662,312.54	\$925,279.95	\$31,930.77	\$41,924.68	\$277,925.89	\$276,028.49
FAILED IMPORT CHARGE	(\$1,427.71)	(\$2,076.44)	(\$4,162.73)	(\$3,135.72)	(\$478.25)	(\$818.90)	\$0.00
	12	13	14	15	16	17	18
DAM ENERGY	\$852,029.78	\$905,278.35	\$983,810.03	\$1,168,826.92	\$917,440.19	\$907,545.36	\$810,037.17
DAM LOSSES	(\$1,330,261.14)	(\$1,415,415.17)	(\$1,574,856.71)	(\$1,892,009.29)	(\$1,453,961.27)	(\$1,404,594.06)	(\$1,264,081.77)
BALANCING ENERGY	(\$123,914.60)	(\$221,022.84)	(\$301,863.07)	(\$380,653.41)	(\$356,953.34)	(\$150,541.19)	(\$144,958.55)
BALANCING LOSSES	(\$118,482.11)	\$7,756.73	\$57,702.82	\$128,807.47	\$181,609.87	(\$1,728.01)	(\$27,592.96)
BALANCING CONGESTION	(\$41,974.38)	\$24,822.22	(\$55,029.02)	(\$58,879.16)	\$252,892.74	\$225,653.58	(\$1,128.99)
FAILED IMPORT CHARGE	(\$1,096.53)	\$0.00	(\$218.47)	(\$41.76)	(\$994.52)	\$0.00	\$0.00
	19	20	21	22	23	24	25
DAM ENERGY	\$1,082,810.52	\$1,049,199.52	\$912,729.59	\$882,281.92	\$917,674.36	\$940,287.61	\$854,990.04
DAM LOSSES	(\$1,644,759.29)	(\$1,669,294.08)	(\$1,408,715.72)	(\$1,373,317.32)	(\$1,412,664.16)	(\$1,408,114.90)	(\$1,315,106.18)
BALANCING ENERGY	(\$292,271.97)	(\$183,973.07)	(\$300,257.17)	(\$131,942.81)	(\$144,550.62)	(\$29,923.68)	(\$311,797.94)
BALANCING LOSSES	\$114,925.79	\$35,036.03	\$47,166.22	\$24,627.70	\$124,924.86	\$63,509.01	\$61,395.84
BALANCING CONGESTION	\$3,422,893.97	\$89,992.90	\$3,010,962.46	\$8,627.19	\$220,202.07	\$265,552.34	\$588,595.81
FAILED IMPORT CHARGE	(\$126,682.51)	(\$0.75)	(\$517.83)	(\$1,369.14)	(\$56.75)	(\$554.63)	(\$879.50)
	26	27	28	29	30	31	
DAM ENERGY	\$864,464.94	\$759,878.14	\$917,663.26	\$1,018,584.40	\$708,596.11	\$566,824.86	
DAM LOSSES	(\$1,232,512.20)	(\$1,154,706.03)	(\$1,369,027.15)	(\$1,385,629.19)	(\$1,030,423.79)	(\$867,052.31)	
BALANCING ENERGY	(\$168,834.29)	(\$128,193.20)	(\$328,707.73)	(\$405,662.14)	(\$109,837.33)	(\$61,379.51)	
BALANCING LOSSES	\$10,043.42	(\$10,590.71)	(\$26,892.98)	\$99,795.28	\$13,774.57	\$50,157.71	
BALANCING CONGESTION	(\$18,051.35)	(\$96,434.41)	(\$153,467.64)	\$142,267.19	(\$15,591.32)	(\$14,306.25)	
FAILED IMPORT CHARGE	(\$22.80)	(\$457.87)	(\$1,537.43)	(\$588.46)	(\$89.38)	(\$687.82)	

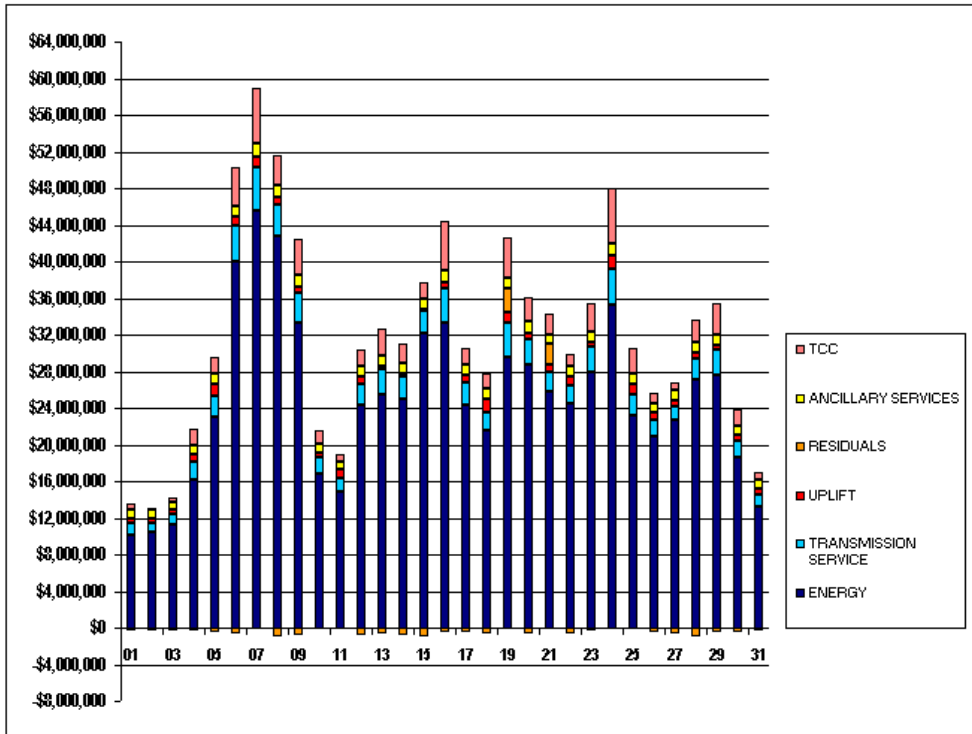


FOR DISCUSSION PURPOSES ONLY

SETTLEMENTS REPORT
July 2010 Close-Out Settlement
April 6, 2011

4-Month Settlement Adjustment – Market Costs Analysis

	MONDAY	TUESDAY	WEDNESDAY	THURSDAY	FRIDAY	SATURDAY	SUNDAY
				1	2	3	4
ENERGY				\$10,172,251.99	\$10,372,801.12	\$11,187,690.91	\$16,150,998.57
TRANSMISSION SERVICE				\$1,302,651.11	\$1,022,968.32	\$1,194,639.36	\$1,930,099.20
UPLIFT				\$500,183.18	\$558,519.75	\$477,152.18	\$819,852.87
RESIDUALS				(\$306,560.57)	(\$295,634.85)	(\$264,852.95)	(\$388,260.15)
ANCILLARY SERVICES				\$854,575.38	\$871,856.18	\$856,749.31	\$880,531.59
TCC				\$704,894.08	\$308,278.66	\$536,879.66	\$1,654,925.41
	5	6	7	8	9	10	11
ENERGY	\$23,081,307.51	\$40,071,112.54	\$45,563,077.65	\$42,801,411.46	\$33,247,563.95	\$16,802,519.74	\$14,883,140.73
TRANSMISSION SERVICE	\$2,226,275.26	\$3,906,232.21	\$4,746,208.98	\$3,333,705.90	\$3,314,416.83	\$1,839,703.28	\$1,429,085.17
UPLIFT	\$1,370,629.67	\$856,883.05	\$1,149,934.57	\$851,262.96	\$717,206.70	\$526,304.97	\$819,654.59
RESIDUALS	(\$413,862.10)	(\$656,355.11)	(\$185,400.09)	(\$1,013,898.44)	(\$768,890.22)	(\$217,416.12)	(\$47,193.86)
ANCILLARY SERVICES	\$1,038,335.71	\$1,138,648.79	\$1,367,819.66	\$1,296,874.78	\$1,218,526.57	\$944,723.78	\$824,360.16
TCC	\$1,862,082.17	\$4,210,759.67	\$6,172,494.67	\$3,331,026.79	\$4,030,717.20	\$1,375,541.01	\$757,570.51
	12	13	14	15	16	17	18
ENERGY	\$24,383,962.64	\$25,536,436.59	\$25,023,855.12	\$32,223,853.54	\$33,342,000.32	\$24,366,575.79	\$21,510,636.38
TRANSMISSION SERVICE	\$2,223,924.27	\$2,692,869.48	\$2,442,899.30	\$2,348,131.35	\$3,693,420.75	\$2,337,668.03	\$2,079,130.05
UPLIFT	\$748,872.02	\$280,120.78	\$276,596.20	\$229,040.05	\$703,889.05	\$818,068.23	\$1,415,102.93
RESIDUALS	(\$763,687.58)	(\$698,580.36)	(\$890,453.55)	(\$1,033,945.42)	(\$459,966.04)	(\$423,657.76)	(\$627,721.24)
ANCILLARY SERVICES	\$1,162,684.17	\$1,164,186.45	\$1,143,039.64	\$1,185,834.92	\$1,233,967.17	\$1,159,301.72	\$1,082,585.55
TCC	\$1,769,723.04	\$2,951,074.32	\$2,194,379.74	\$1,721,414.30	\$5,421,558.61	\$1,903,317.06	\$1,638,138.23
	19	20	21	22	23	24	25
ENERGY	\$29,534,605.04	\$28,704,843.78	\$25,810,086.27	\$24,452,166.62	\$27,927,893.74	\$35,297,191.20	\$23,123,478.84
TRANSMISSION SERVICE	\$3,890,170.82	\$2,791,605.25	\$2,148,578.96	\$1,993,119.83	\$2,757,741.76	\$3,930,949.64	\$2,377,068.38
UPLIFT	\$1,239,299.48	\$735,236.90	\$783,912.84	\$950,207.35	\$474,938.22	\$1,459,531.79	\$1,123,439.50
RESIDUALS	\$2,557,136.32	(\$679,037.85)	\$2,261,363.14	(\$591,090.68)	(\$294,470.17)	(\$169,244.83)	(\$122,893.95)
ANCILLARY SERVICES	\$1,133,583.83	\$1,183,422.38	\$1,069,931.17	\$1,111,537.29	\$1,134,535.44	\$1,204,171.16	\$1,094,630.98
TCC	\$4,430,097.64	\$2,712,261.18	\$2,275,702.40	\$1,422,307.89	\$3,187,525.78	\$6,185,171.18	\$2,799,791.82
	26	27	28	29	30	31	
ENERGY	\$20,942,014.89	\$22,620,522.19	\$27,075,178.75	\$27,658,036.02	\$18,622,148.50	\$13,233,273.31	
TRANSMISSION SERVICE	\$1,738,424.58	\$1,583,141.28	\$2,311,952.84	\$2,698,688.00	\$1,841,472.04	\$1,338,503.87	
UPLIFT	\$781,650.76	\$632,091.53	\$682,318.57	\$545,624.07	\$582,118.50	\$677,505.36	
RESIDUALS	(\$544,909.08)	(\$630,503.02)	(\$961,971.58)	(\$531,233.26)	(\$433,578.72)	(\$326,443.31)	
ANCILLARY SERVICES	\$1,048,785.94	\$1,070,401.39	\$1,150,240.24	\$1,174,507.20	\$1,012,944.27	\$875,731.97	
TCC	\$1,122,409.89	\$928,837.96	\$2,354,617.20	\$3,314,041.94	\$1,741,430.78	\$877,172.70	

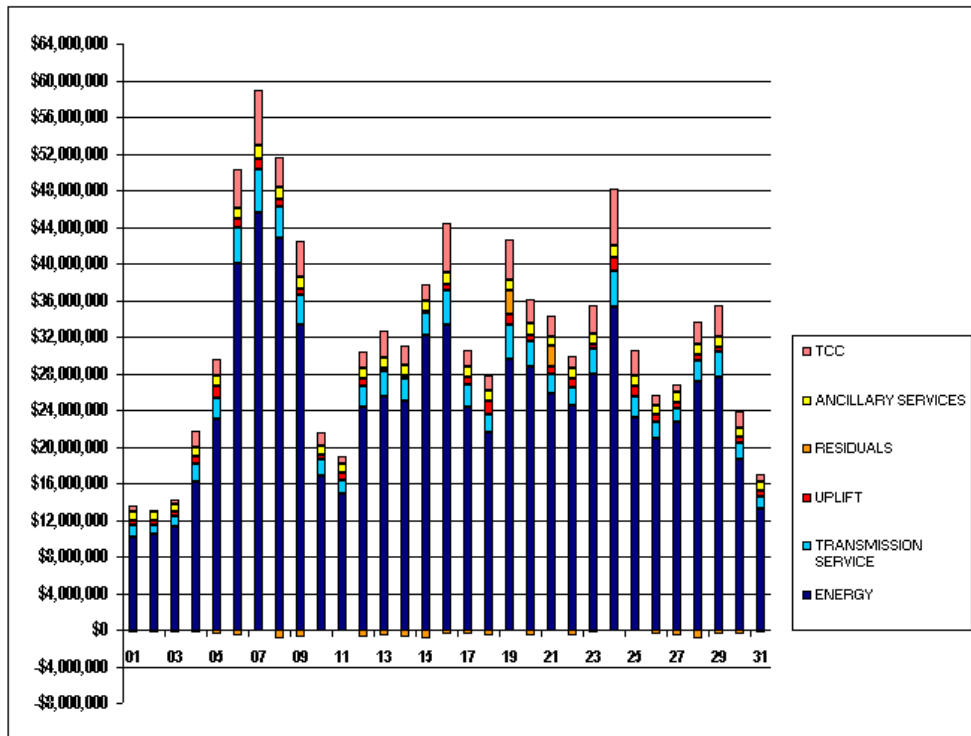


FOR DISCUSSION PURPOSES ONLY

SETTLEMENTS REPORT
July 2010 Close-Out Settlement
April 6, 2011

Close-Out Settlement – Market Costs Analysis

	MONDAY	TUESDAY	WEDNESDAY	THURSDAY	FRIDAY	SATURDAY	SUNDAY
				1	2	3	4
ENERGY				\$10,172,254.79	\$10,372,802.32	\$11,187,691.30	\$16,150,998.78
TRANSMISSION SERVICE				\$1,302,651.12	\$1,022,968.33	\$1,194,639.36	\$1,930,099.20
UPLIFT				\$500,183.18	\$558,519.75	\$477,152.18	\$819,852.87
RESIDUALS				(\$306,563.40)	(\$295,636.10)	(\$264,853.24)	(\$388,260.39)
ANCILLARY SERVICES				\$854,575.39	\$871,856.18	\$856,749.32	\$880,531.59
TCC				\$704,894.08	\$308,278.66	\$536,879.66	\$1,654,925.41
	5	6	7	8	9	10	11
ENERGY	\$23,081,308.05	\$40,071,114.36	\$45,563,082.69	\$42,801,414.29	\$33,247,563.87	\$16,802,519.68	\$14,883,141.15
TRANSMISSION SERVICE	\$2,226,275.26	\$3,906,232.22	\$4,746,208.99	\$3,333,705.91	\$3,314,416.83	\$1,639,703.28	\$1,429,085.17
UPLIFT	\$1,370,629.67	\$856,888.13	\$1,149,934.60	\$851,262.93	\$717,206.70	\$526,304.97	\$895,875.48
RESIDUALS	(\$413,862.72)	(\$656,357.09)	(\$185,405.23)	(\$1,013,901.29)	(\$768,890.02)	(\$217,416.22)	(\$47,194.44)
ANCILLARY SERVICES	\$1,038,335.71	\$1,138,648.80	\$1,367,819.66	\$1,296,874.78	\$1,218,526.57	\$944,723.78	\$824,360.18
TCC	\$1,862,082.17	\$4,210,759.67	\$6,172,494.67	\$3,331,026.79	\$4,030,717.20	\$1,375,541.01	\$757,570.51
	12	13	14	15	16	17	18
ENERGY	\$24,383,963.99	\$25,536,436.98	\$25,023,855.90	\$32,223,857.28	\$33,342,000.70	\$24,366,581.46	\$21,510,640.35
TRANSMISSION SERVICE	\$2,223,924.27	\$2,692,869.48	\$2,442,899.30	\$2,348,131.35	\$3,693,420.76	\$2,337,668.03	\$2,079,130.06
UPLIFT	\$748,872.02	\$280,120.79	\$276,596.20	\$229,040.05	\$707,989.89	\$819,981.23	\$1,415,102.92
RESIDUALS	(\$763,698.98)	(\$698,580.71)	(\$890,454.42)	(\$1,033,949.23)	(\$459,966.33)	(\$423,664.32)	(\$627,725.10)
ANCILLARY SERVICES	\$1,162,684.17	\$1,164,186.46	\$1,143,039.64	\$1,185,834.92	\$1,233,967.18	\$1,159,301.73	\$1,082,585.56
TCC	\$1,769,723.04	\$2,951,074.32	\$2,194,379.74	\$1,721,414.30	\$5,421,558.61	\$1,903,317.06	\$1,638,138.23
	19	20	21	22	23	24	25
ENERGY	\$29,534,571.47	\$28,704,845.34	\$25,810,082.21	\$24,452,168.49	\$27,927,893.90	\$35,297,190.71	\$23,123,486.94
TRANSMISSION SERVICE	\$3,890,170.83	\$2,791,605.25	\$2,148,578.97	\$1,993,119.83	\$2,757,741.76	\$3,930,949.64	\$2,377,068.38
UPLIFT	\$1,238,552.12	\$735,236.90	\$788,216.38	\$950,207.30	\$474,938.22	\$1,466,645.99	\$1,123,439.50
RESIDUALS	\$2,556,916.51	(\$679,039.45)	\$2,261,367.55	(\$591,092.46)	(\$294,470.24)	(\$169,244.25)	(\$122,901.93)
ANCILLARY SERVICES	\$1,133,583.84	\$1,183,422.38	\$1,069,931.17	\$1,111,537.30	\$1,134,535.44	\$1,204,171.17	\$1,094,630.98
TCC	\$4,430,097.64	\$2,712,261.18	\$2,275,702.40	\$1,422,307.89	\$3,187,525.78	\$6,185,171.18	\$2,799,791.82
	26	27	28	29	30	31	
ENERGY	\$20,942,018.26	\$22,620,523.26	\$27,075,176.82	\$27,658,035.51	\$18,622,151.17	\$13,233,273.28	
TRANSMISSION SERVICE	\$1,738,424.58	\$1,583,141.29	\$2,311,952.85	\$2,698,688.00	\$1,841,472.04	\$1,338,503.88	
UPLIFT	\$782,079.08	\$632,091.52	\$686,057.04	\$545,624.07	\$580,967.62	\$677,505.36	
RESIDUALS	(\$544,912.28)	(\$630,504.08)	(\$961,969.67)	(\$531,232.92)	(\$433,581.14)	(\$326,443.32)	
ANCILLARY SERVICES	\$1,048,785.94	\$1,070,401.40	\$1,150,240.24	\$1,174,507.21	\$1,012,944.27	\$875,731.98	
TCC	\$1,122,409.89	\$928,837.96	\$2,354,617.20	\$3,314,041.94	\$1,741,430.78	\$877,172.70	



FOR DISCUSSION PURPOSES ONLY