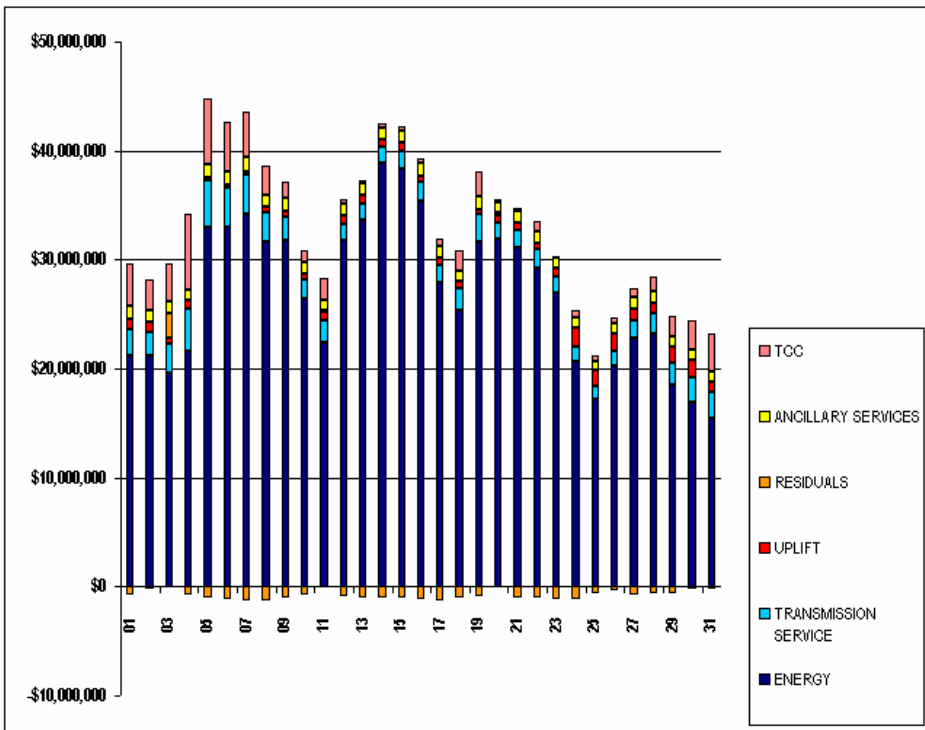


SETTLEMENTS REPORT  
DECEMBER 2005 SETTLEMENT ADJUSTMENT  
JANUARY 08, 2007

4-MONTH SETTLEMENT ADJUSTMENT MARKET COSTS ANALYSIS

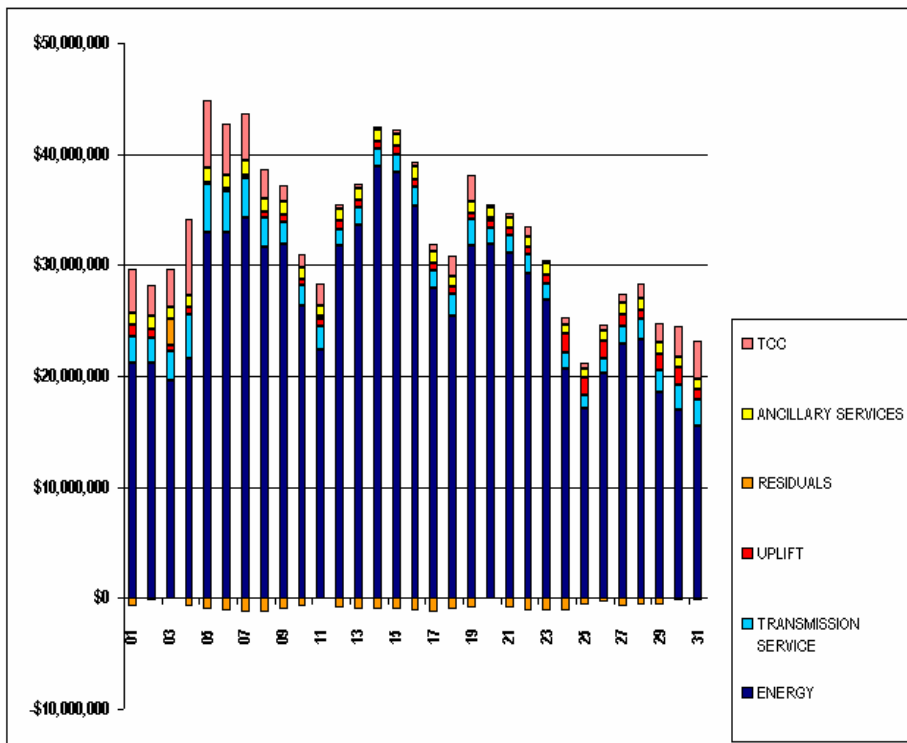
	MONDAY	TUESDAY	WEDNESDAY	THURSDAY	FRIDAY	SATURDAY	SUNDAY
ENERGY				1	2	3	4
TRANSMISSION SERVICE				\$21,244,017.77	\$21,217,617.26	\$19,588,749.53	\$21,626,107.25
UPLIFT				\$2,367,734.59	\$2,179,100.05	\$2,666,512.23	\$3,894,856.33
RESIDUALS				\$997,445.90	\$836,452.25	\$540,758.14	\$729,392.90
ANCILLARY SERVICES				(\$706,666.70)	(\$244,940.26)	\$2,303,634.97	(\$747,607.07)
TCC				\$1,128,312.73	\$1,171,322.18	\$1,050,393.03	\$1,041,157.21
				\$3,900,559.56	\$2,763,449.75	\$3,462,848.47	\$6,900,369.36
	5	6	7	8	9	10	11
ENERGY	\$32,952,466.89	\$33,002,259.52	\$34,248,922.45	\$31,628,661.69	\$31,835,094.04	\$26,402,515.04	\$22,388,978.15
TRANSMISSION SERVICE	\$4,307,673.02	\$3,666,601.75	\$3,560,008.95	\$2,648,831.79	\$2,091,978.82	\$1,811,478.04	\$2,057,055.13
UPLIFT	\$233,506.80	\$189,261.93	\$334,277.51	\$554,482.25	\$548,417.23	\$503,183.42	\$714,007.68
RESIDUALS	(\$978,786.55)	(\$1,156,926.17)	(\$1,284,772.50)	(\$1,263,491.90)	(\$995,255.76)	(\$710,048.30)	\$22,478.65
ANCILLARY SERVICES	\$1,272,071.17	\$1,180,440.08	\$1,226,532.76	\$1,117,746.08	\$1,189,935.74	\$1,006,008.81	\$327,866.92
TCC	\$6,043,706.02	\$4,642,034.37	\$4,239,237.40	\$2,628,073.29	\$1,509,665.58	\$1,177,547.75	\$2,041,052.82
	12	13	14	15	16	17	18
ENERGY	\$31,753,258.22	\$33,658,484.08	\$36,901,788.41	\$38,354,190.44	\$35,357,720.92	\$27,914,779.18	\$25,385,220.77
TRANSMISSION SERVICE	\$1,475,106.10	\$1,536,512.04	\$1,518,369.93	\$1,616,746.57	\$1,746,267.50	\$1,582,788.40	\$2,000,606.48
UPLIFT	\$779,707.47	\$687,277.88	\$672,802.17	\$801,433.77	\$632,473.76	\$733,374.64	\$667,887.15
RESIDUALS	(\$937,232.13)	(\$872,049.88)	(\$869,369.30)	(\$1,008,722.76)	(\$1,184,374.25)	(\$1,310,930.59)	(\$1,072,204.79)
ANCILLARY SERVICES	\$1,119,331.65	\$1,095,517.72	\$1,060,775.84	\$1,080,667.51	\$1,111,991.24	\$1,004,303.29	\$325,477.46
TCC	\$364,974.86	\$355,597.87	\$315,338.19	\$337,828.17	\$411,052.42	\$689,291.04	\$1,905,498.04
	19	20	21	22	23	24	25
ENERGY	\$31,706,307.75	\$31,916,817.39	\$31,158,747.31	\$29,222,701.32	\$26,935,579.14	\$20,611,416.60	\$17,148,854.50
TRANSMISSION SERVICE	\$2,452,234.04	\$1,462,257.36	\$1,583,157.19	\$1,781,720.99	\$1,447,395.73	\$1,441,661.11	\$1,179,462.09
UPLIFT	\$460,493.93	\$713,380.27	\$644,774.39	\$570,692.04	\$793,816.09	\$1,747,102.44	\$1,539,588.69
RESIDUALS	(\$871,050.75)	\$282,756.98	(\$885,020.24)	(\$1,081,983.09)	(\$1,151,651.53)	(\$1,145,880.91)	(\$679,424.58)
ANCILLARY SERVICES	\$1,145,570.15	\$944,460.96	\$1,013,978.77	\$1,014,788.40	\$972,365.75	\$864,910.19	\$811,960.64
TCC	\$2,309,642.92	\$185,361.64	\$380,847.31	\$928,910.49	\$228,391.15	\$667,481.30	\$479,129.14
	26	27	28	29	30	31	
ENERGY	\$20,315,547.44	\$22,852,663.50	\$23,250,678.85	\$18,552,729.36	\$16,973,891.18	\$15,502,218.00	
TRANSMISSION SERVICE	\$1,328,911.10	\$1,602,536.20	\$1,892,458.33	\$1,956,274.08	\$2,279,075.51	\$2,403,378.25	
UPLIFT	\$1,590,438.87	\$1,098,495.18	\$850,885.40	\$1,507,692.09	\$1,576,303.00	\$891,731.10	
RESIDUALS	(\$405,613.11)	(\$776,656.43)	(\$662,927.62)	(\$668,130.42)	(\$217,410.66)	(\$268,723.93)	
ANCILLARY SERVICES	\$967,456.02	\$1,032,648.45	\$1,058,645.49	\$979,622.44	\$952,817.23	\$954,575.47	
TCC	\$536,395.40	\$759,372.20	\$1,318,238.50	\$1,807,614.82	\$2,668,642.22	\$3,468,510.30	



SETTLEMENTS REPORT  
DECEMBER 2005 SETTLEMENT ADJUSTMENT  
JANUARY 08, 2007

12-MONTH SETTLEMENT ADJUSTMENT MARKET COSTS ANALYSIS

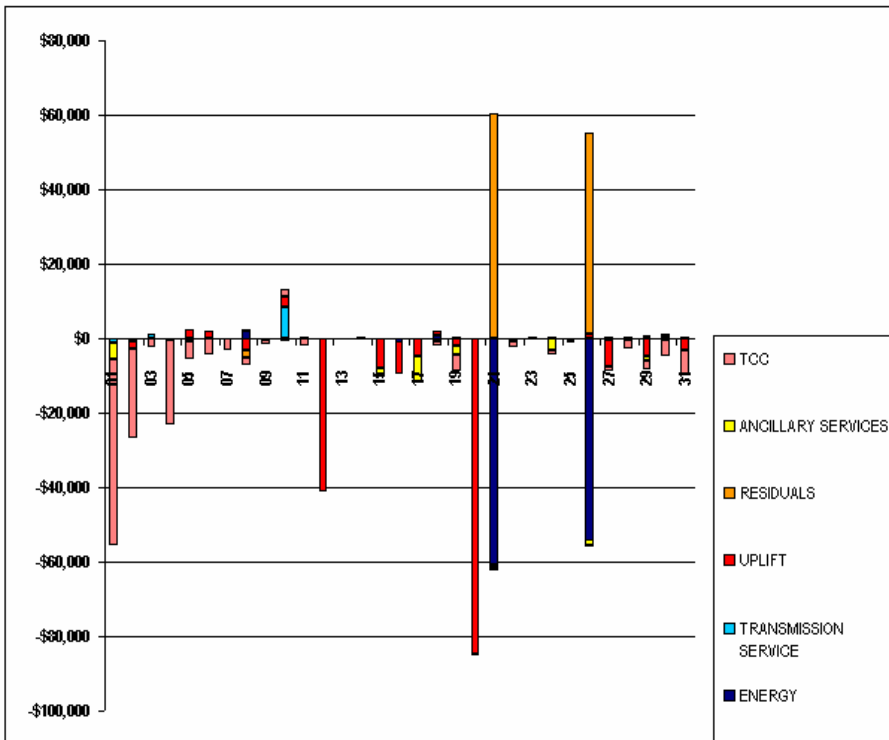
	MONDAY	TUESDAY	WEDNESDAY	THURSDAY	FRIDAY	SATURDAY	SUNDAY
				1	2	3	4
ENERGY				\$21,243,963.40	\$21,217,504.67	\$19,588,621.69	\$21,626,013.96
TRANSMISSION SERVICE				\$2,366,444.54	\$2,178,512.71	\$2,667,741.50	\$3,894,474.08
UPLIFT				\$997,445.90	\$834,385.30	\$640,758.21	\$729,392.91
RESIDUALS				(\$706,612.27)	(\$244,829.23)	\$2,303,752.72	(\$747,513.79)
ANCILLARY SERVICES				\$1,123,863.77	\$1,171,295.96	\$1,050,445.90	\$1,041,210.62
TCC				\$3,850,724.10	\$2,739,511.47	\$3,460,571.41	\$6,877,579.84
	5	6	7	8	9	10	11
ENERGY	\$32,952,433.23	\$33,002,251.44	\$34,248,911.05	\$31,630,814.12	\$31,835,083.42	\$26,402,504.65	\$22,388,969.52
TRANSMISSION SERVICE	\$4,307,690.31	\$3,666,611.68	\$3,560,033.62	\$2,648,877.66	\$2,092,002.04	\$1,819,860.92	\$2,057,099.15
UPLIFT	\$235,946.58	\$191,253.54	\$334,277.64	\$551,384.84	\$548,417.23	\$605,911.61	\$714,381.48
RESIDUALS	(\$978,752.82)	(\$1,156,918.16)	(\$1,284,761.10)	(\$1,265,644.33)	(\$895,245.12)	(\$710,037.89)	\$222,487.29
ANCILLARY SERVICES	\$1,271,420.03	\$1,180,385.80	\$1,226,457.36	\$1,117,803.35	\$1,189,680.19	\$1,005,278.04	\$927,935.19
TCC	\$6,038,904.92	\$4,637,559.22	\$4,236,289.50	\$2,626,232.39	\$1,508,154.73	\$1,179,448.92	\$2,039,261.12
	12	13	14	15	16	17	18
ENERGY	\$31,753,246.02	\$33,658,470.64	\$38,902,123.82	\$38,354,174.13	\$35,357,028.58	\$27,914,670.34	\$25,386,082.53
TRANSMISSION SERVICE	\$1,475,124.20	\$1,536,543.27	\$1,518,407.10	\$1,616,779.80	\$1,746,300.36	\$1,582,843.91	\$2,000,667.31
UPLIFT	\$738,496.87	\$687,277.86	\$672,802.16	\$793,598.28	\$623,643.57	\$728,743.89	\$668,808.82
RESIDUALS	(\$937,220.03)	(\$972,036.41)	(\$969,704.71)	(\$1,008,706.40)	(\$1,184,319.92)	(\$1,310,821.75)	(\$1,072,095.35)
ANCILLARY SERVICES	\$1,119,359.70	\$1,095,566.16	\$1,060,635.25	\$1,078,221.09	\$1,112,040.34	\$997,614.51	\$924,831.44
TCC	\$364,974.86	\$355,589.67	\$315,338.19	\$337,668.27	\$411,052.42	\$668,985.59	\$1,904,003.59
	19	20	21	22	23	24	25
ENERGY	\$31,706,828.33	\$31,916,767.01	\$31,098,360.21	\$29,222,201.60	\$26,935,496.15	\$20,611,309.43	\$17,148,825.92
TRANSMISSION SERVICE	\$2,452,253.16	\$1,462,272.41	\$1,582,792.47	\$1,781,683.98	\$1,447,391.80	\$1,441,716.84	\$1,179,518.26
UPLIFT	\$458,616.48	\$628,568.95	\$644,156.39	\$570,692.08	\$794,214.66	\$1,747,198.80	\$1,539,583.77
RESIDUALS	(\$870,999.63)	\$282,808.60	(\$924,617.37)	(\$1,081,869.02)	(\$1,151,556.57)	(\$1,145,792.93)	(\$679,339.19)
ANCILLARY SERVICES	\$1,143,039.32	\$944,069.77	\$1,013,240.82	\$1,014,543.50	\$971,983.11	\$861,744.33	\$811,232.28
TCC	\$2,305,272.32	\$185,361.64	\$360,367.61	\$927,118.79	\$228,339.90	\$666,495.25	\$478,573.59
	26	27	28	29	30	31	
ENERGY	\$20,261,744.96	\$22,852,452.84	\$23,250,609.87	\$18,552,585.17	\$18,973,536.92	\$15,502,021.32	
TRANSMISSION SERVICE	\$1,328,567.18	\$1,602,543.30	\$1,892,699.03	\$1,957,054.04	\$2,279,856.61	\$2,403,672.59	
UPLIFT	\$1,591,764.55	\$1,091,083.45	\$850,908.59	\$1,502,973.07	\$1,576,302.99	\$888,696.69	
RESIDUALS	(\$351,777.47)	(\$776,454.14)	(\$662,852.96)	(\$668,002.77)	(\$217,049.39)	(\$268,561.56)	
ANCILLARY SERVICES	\$966,184.06	\$1,032,659.47	\$1,058,248.08	\$978,635.53	\$952,820.72	\$954,629.52	
TCC	\$535,878.06	\$758,150.40	\$1,315,797.53	\$1,804,892.14	\$2,684,222.57	\$3,461,629.51	



SETTLEMENTS REPORT  
DECEMBER 2005 SETTLEMENT ADJUSTMENT  
JANUARY 08, 2007

**SETTLEMENT ADJUSTMENT MARKET COSTS DELTA ANALYSIS**

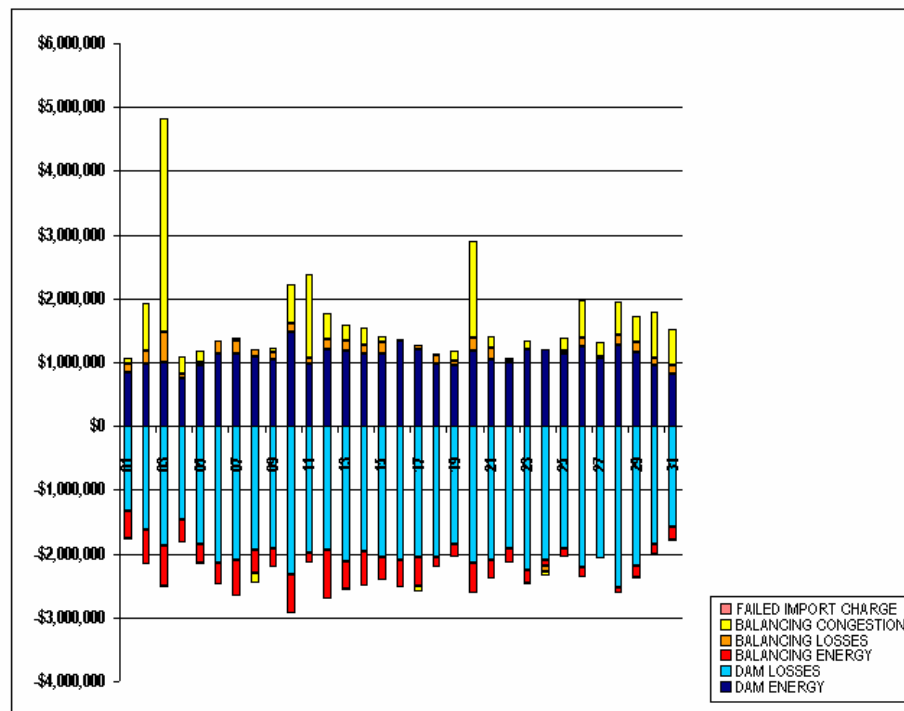
	MONDAY	TUESDAY	WEDNESDAY	THURSDAY	FRIDAY	SATURDAY	SUNDAY
				1	2	3	4
ENERGY				(\$54.37)	(\$112.59)	(\$127.84)	(\$93.29)
TRANSMISSION SERVICE				(\$1,290.05)	(\$587.34)	\$1,229.27	(\$382.25)
UPLIFT				\$0.00	(\$2,066.95)	\$0.07	\$0.01
RESIDUALS				\$54.43	\$111.03	\$117.75	\$93.28
ANCILLARY SERVICES				(\$4,448.96)	(\$26.22)	\$52.87	\$53.41
TCC				(\$49,835.46)	(\$23,938.28)	(\$2,277.06)	(\$22,789.52)
	5	6	7	8	9	10	11
ENERGY	(\$33.66)	(\$8.08)	(\$11.40)	\$2,152.43	(\$10.62)	(\$10.39)	(\$8.63)
TRANSMISSION SERVICE	\$17.29	\$9.93	\$24.67	\$45.87	\$23.22	\$6,382.88	\$44.02
UPLIFT	\$2,439.78	\$1,991.61	\$0.13	(\$3,097.41)	\$0.00	\$2,728.19	\$373.80
RESIDUALS	\$33.73	\$8.01	\$11.40	(\$2,152.43)	\$10.64	\$10.41	\$8.64
ANCILLARY SERVICES	(\$651.14)	(\$54.28)	(\$75.40)	\$57.27	(\$255.55)	(\$730.77)	\$68.27
TCC	(\$4,801.10)	(\$4,475.15)	(\$2,947.90)	(\$1,840.90)	(\$1,510.85)	\$1,901.17	(\$1,791.70)
	12	13	14	15	16	17	18
ENERGY	(\$12.20)	(\$13.44)	\$335.41	(\$16.31)	(\$892.34)	(\$108.84)	\$861.76
TRANSMISSION SERVICE	\$18.10	\$31.23	\$37.17	\$33.23	\$32.86	\$55.51	\$60.83
UPLIFT	(\$41,210.60)	(\$0.02)	(\$0.01)	(\$7,835.49)	(\$8,830.19)	(\$4,630.75)	\$921.67
RESIDUALS	\$12.10	\$13.47	(\$335.41)	\$16.36	\$54.33	\$108.84	\$109.44
ANCILLARY SERVICES	\$28.05	\$48.44	(\$140.53)	(\$2,446.42)	\$49.10	(\$6,688.78)	(\$646.02)
TCC	\$0.00	(\$8.20)	\$0.00	(\$159.90)	\$0.00	(\$305.45)	(\$1,494.45)
	19	20	21	22	23	24	25
ENERGY	\$520.58	(\$50.38)	(\$60,387.10)	(\$499.72)	(\$82.99)	(\$107.17)	(\$28.58)
TRANSMISSION SERVICE	\$19.12	\$15.05	(\$364.72)	(\$37.01)	(\$3.93)	\$55.73	\$56.17
UPLIFT	(\$1,877.45)	(\$84,811.32)	(\$618.00)	\$0.04	\$398.57	\$96.36	(\$4.92)
RESIDUALS	\$51.12	\$51.62	\$60,402.87	\$114.07	\$94.96	\$87.98	\$85.39
ANCILLARY SERVICES	(\$2,530.83)	(\$391.19)	(\$737.95)	(\$244.90)	(\$382.64)	(\$3,165.86)	(\$728.36)
TCC	(\$4,370.60)	\$0.00	(\$479.70)	(\$1,791.70)	(\$51.25)	(\$986.05)	(\$555.55)
	26	27	28	29	30	31	
ENERGY	(\$53,802.48)	(\$210.66)	(\$68.98)	(\$144.19)	(\$354.26)	(\$196.68)	
TRANSMISSION SERVICE	(\$343.92)	\$7.10	\$240.70	\$779.96	\$781.10	\$294.34	
UPLIFT	\$1,325.68	(\$7,411.73)	\$23.19	(\$4,719.02)	(\$0.01)	(\$3,032.41)	
RESIDUALS	\$53,835.64	\$202.29	\$74.66	\$127.65	\$361.27	\$162.37	
ANCILLARY SERVICES	(\$1,271.96)	\$11.02	(\$397.41)	(\$986.91)	\$3.49	\$54.05	
TCC	(\$517.34)	(\$1,221.80)	(\$2,440.91)	(\$2,722.68)	(\$4,419.85)	(\$6,680.79)	



SETTLEMENTS REPORT  
DECEMBER 2005 SETTLEMENT ADJUSTMENT  
JANUARY 08, 2007

4-MONTH SETTLEMENT ADJUSTMENT MARKET RESIDUALS ANALYSIS

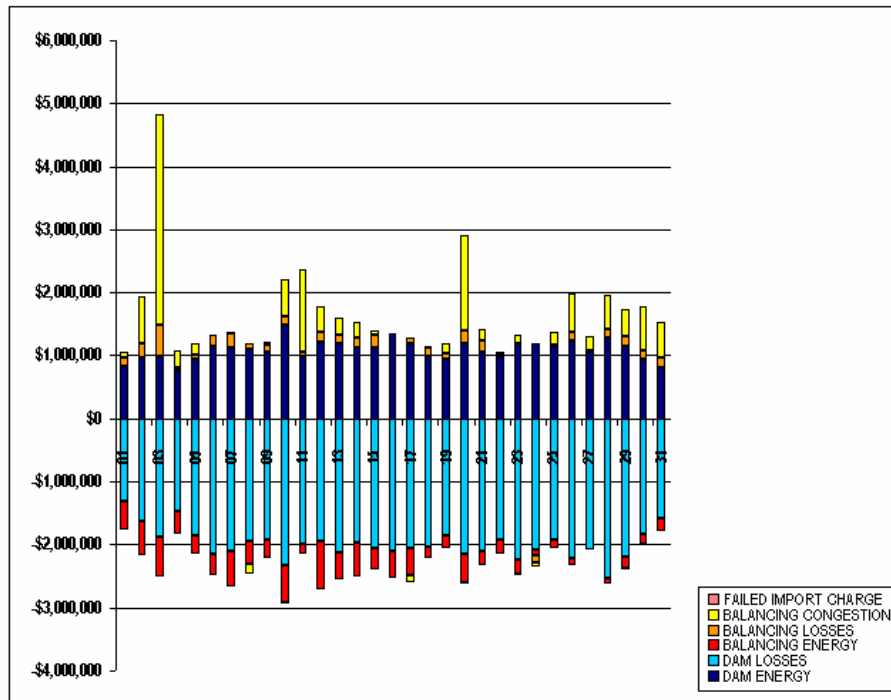
	MONDAY	TUESDAY	WEDNESDAY	THURSDAY	FRIDAY	SATURDAY	SUNDAY
				1	2	3	4
DAW ENERGY				\$837,883.45	\$972,130.19	\$998,078.35	\$761,780.56
DAM LOSSES				(\$1,323,203.81)	(\$1,631,412.47)	(\$1,868,503.72)	(\$1,470,252.14)
BALANCING ENERGY				(\$445,974.53)	(\$537,646.14)	(\$648,759.68)	(\$364,968.78)
BALANCING LOSSES				\$135,254.68	\$218,224.15	\$487,887.07	\$48,860.85
BALANCING CONGESTION				\$93,420.79	\$735,569.10	\$3,336,931.34	\$278,826.11
FAILED IMPORT CHARGE				(\$4,047.28)	(\$1,805.09)	(\$1,998.39)	(\$1,853.67)
	5	6	7	8	9	10	11
DAW ENERGY	\$954,846.36	\$1,140,922.11	\$1,132,667.75	\$1,090,788.35	\$1,051,119.81	\$1,481,004.99	\$987,947.32
DAM LOSSES	(\$1,851,504.39)	(\$2,139,287.62)	(\$2,110,739.46)	(\$1,943,171.90)	(\$1,928,816.68)	(\$2,335,951.27)	(\$1,982,878.80)
BALANCING ENERGY	(\$303,522.42)	(\$338,143.56)	(\$547,908.34)	(\$362,301.60)	(\$280,364.91)	(\$590,905.84)	(\$170,155.22)
BALANCING LOSSES	\$51,941.16	\$196,277.75	\$214,470.15	\$103,168.99	\$108,554.15	\$131,306.71	\$79,384.32
BALANCING CONGESTION	\$174,600.87	(\$3,596.90)	\$28,657.40	(\$151,975.74)	\$65,620.37	\$605,862.89	\$1,308,201.04
FAILED IMPORT CHARGE	(\$6,148.13)	(\$13,097.95)	(\$1,920.00)	\$0.00	(\$1,368.50)	(\$1,365.58)	(\$20.01)
	12	13	14	15	16	17	18
DAW ENERGY	\$1,210,531.16	\$1,189,250.75	\$1,129,111.73	\$1,131,936.78	\$1,345,796.38	\$1,202,908.81	\$978,243.08
DAM LOSSES	(\$1,942,921.79)	(\$2,126,425.04)	(\$1,975,046.47)	(\$2,050,275.87)	(\$2,101,167.79)	(\$2,058,549.50)	(\$2,043,399.46)
BALANCING ENERGY	(\$772,047.46)	(\$436,435.27)	(\$534,371.57)	(\$356,565.70)	(\$431,191.41)	(\$438,127.61)	(\$170,134.63)
BALANCING LOSSES	\$153,947.72	\$149,075.53	\$145,379.63	\$191,556.06	\$9,971.90	\$76,967.01	\$141,945.01
BALANCING CONGESTION	\$413,913.64	\$254,394.81	\$265,557.38	\$78,119.70	(\$7,460.86)	(\$93,361.12)	\$21,141.21
FAILED IMPORT CHARGE	(\$655.40)	(\$1,910.66)	\$0.00	(\$1,493.73)	(\$322.47)	(\$768.18)	\$0.00
	19	20	21	22	23	24	25
DAW ENERGY	\$953,898.30	\$1,186,140.36	\$1,053,471.36	\$998,395.95	\$1,198,005.19	\$1,196,438.17	\$1,139,163.90
DAM LOSSES	(\$1,850,439.20)	(\$2,153,492.08)	(\$2,099,441.59)	(\$1,929,532.04)	(\$2,246,629.51)	(\$2,091,167.89)	(\$1,914,908.75)
BALANCING ENERGY	(\$209,915.18)	(\$456,873.02)	(\$289,800.59)	(\$210,406.96)	(\$208,749.04)	(\$91,005.41)	(\$146,557.36)
BALANCING LOSSES	\$70,170.27	\$203,887.49	\$180,587.32	\$15,128.51	(\$27,069.75)	(\$104,426.45)	\$37,643.36
BALANCING CONGESTION	\$165,235.06	\$1,506,451.03	\$172,207.41	\$46,382.07	\$132,791.58	(\$55,719.33)	\$205,237.28
FAILED IMPORT CHARGE	\$0.00	(\$3,356.80)	(\$2,044.15)	(\$1,950.62)	\$0.00	\$0.00	(\$3.01)
	26	27	28	29	30	31	
DAW ENERGY	\$1,245,160.82	\$1,067,013.57	\$1,281,742.09	\$1,156,493.05	\$947,913.85	\$817,738.97	
DAM LOSSES	(\$2,207,612.27)	(\$2,084,294.64)	(\$2,525,169.69)	(\$2,184,865.79)	(\$1,841,675.69)	(\$1,575,022.50)	
BALANCING ENERGY	(\$163,783.23)	(\$1,666.73)	(\$86,839.74)	(\$190,779.39)	(\$159,049.91)	(\$218,212.20)	
BALANCING LOSSES	\$129,930.51	\$14,881.20	\$137,937.11	\$154,881.67	\$125,980.63	\$138,176.58	
BALANCING CONGESTION	\$590,760.92	\$227,410.17	\$529,411.29	\$413,300.98	\$709,440.46	\$570,602.03	
FAILED IMPORT CHARGE	(\$63.86)	\$0.00	(\$8.68)	(\$17,160.94)	\$0.00	(\$2,006.81)	



SETTLEMENTS REPORT  
DECEMBER 2005 SETTLEMENT ADJUSTMENT  
JANUARY 08, 2007

12-MONTH SETTLEMENT ADJUSTMENT MARKET RESIDUALS ANALYSIS

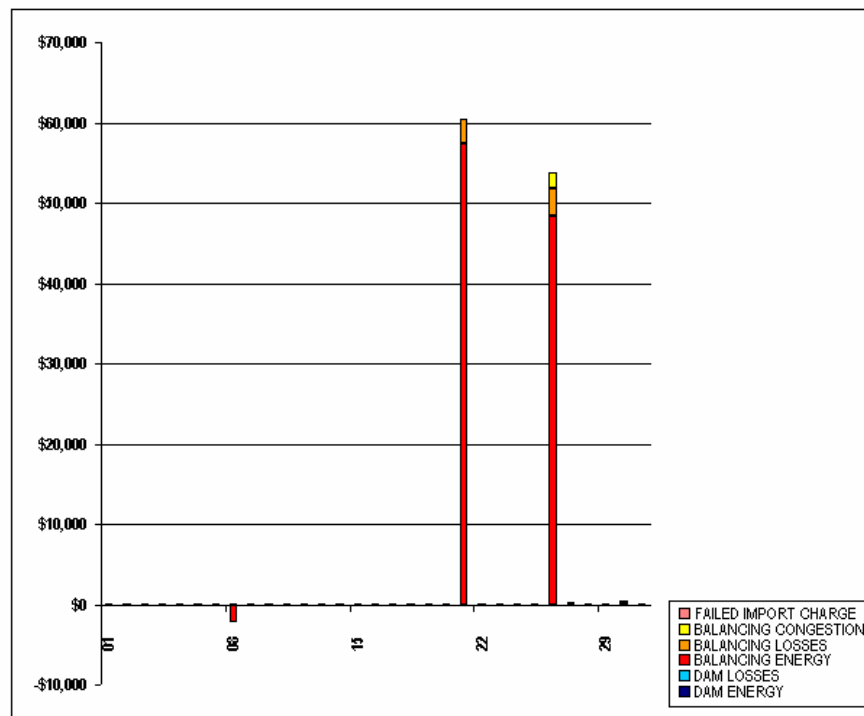
	MONDAY	TUESDAY	WEDNESDAY	THURSDAY	FRIDAY	SATURDAY	SUNDAY
DAM ENERGY				1	2	3	4
DAM LOSSES				\$837,883.45	\$972,130.19	\$998,078.35	\$761,780.56
BALANCING ENERGY				(\$1,323,203.81)	(\$1,631,412.47)	(\$1,868,503.72)	(\$1,470,252.14)
BALANCING LOSSES				(\$445,921.29)	(\$537,546.45)	(\$648,653.27)	(\$364,874.12)
BALANCING CONGESTION				\$135,255.16	\$218,225.08	\$487,886.35	\$48,859.13
FAILED IMPORT CHARGE				\$93,421.44	\$735,579.51	\$3,336,943.35	\$278,826.46
				(\$4,047.22)	(\$1,805.09)	(\$1,998.34)	(\$1,853.68)
	5	6	7	8	9	10	11
DAM ENERGY	\$954,846.36	\$1,140,922.11	\$1,132,667.75	\$1,090,788.35	\$1,051,119.81	\$1,481,004.99	\$887,947.32
DAM LOSSES	(\$1,851,504.39)	(\$2,139,287.62)	(\$2,110,739.46)	(\$1,943,171.90)	(\$1,928,816.68)	(\$2,335,951.27)	(\$1,982,878.80)
BALANCING ENERGY	(\$303,489.25)	(\$338,136.11)	(\$547,897.57)	(\$364,472.71)	(\$280,355.00)	(\$590,897.92)	(\$170,148.11)
BALANCING LOSSES	\$51,941.39	\$196,278.22	\$214,470.74	\$103,186.91	\$108,554.37	\$131,307.67	\$79,385.15
BALANCING CONGESTION	\$174,601.13	(\$3,596.74)	\$28,657.43	(\$151,974.98)	\$55,620.86	\$605,864.20	\$1,308,201.73
FAILED IMPORT CHARGE	(\$5,148.06)	(\$13,098.02)	(\$1,919.99)	\$0.00	(\$1,368.48)	(\$1,365.56)	(\$20.00)
	12	13	14	15	16	17	18
DAM ENERGY	\$1,210,531.14	\$1,189,250.75	\$1,129,111.73	\$1,131,936.78	\$1,345,796.38	\$1,202,908.81	\$978,243.08
DAM LOSSES	(\$1,942,921.75)	(\$2,126,425.04)	(\$1,975,046.47)	(\$2,050,275.87)	(\$2,101,167.79)	(\$2,058,549.50)	(\$2,043,399.46)
BALANCING ENERGY	(\$772,035.89)	(\$436,423.52)	(\$534,348.73)	(\$356,550.24)	(\$431,191.21)	(\$438,116.36)	(\$170,126.01)
BALANCING LOSSES	\$153,947.87	\$149,076.09	\$145,182.77	\$191,556.41	\$10,025.84	\$77,063.68	\$142,045.75
BALANCING CONGESTION	\$413,913.85	\$254,395.94	\$265,395.99	\$76,120.20	(\$7,480.70)	(\$93,360.20)	\$21,141.29
FAILED IMPORT CHARGE	(\$655.45)	(\$1,910.63)	\$0.00	(\$1,493.68)	(\$322.44)	(\$768.18)	\$0.00
	19	20	21	22	23	24	25
DAM ENERGY	\$953,898.30	\$1,186,140.36	\$1,053,471.36	\$998,395.95	\$1,198,005.19	\$1,196,438.17	\$1,139,163.90
DAM LOSSES	(\$1,850,439.20)	(\$2,153,492.08)	(\$2,039,441.59)	(\$1,929,532.04)	(\$2,246,629.51)	(\$2,091,167.89)	(\$1,914,908.75)
BALANCING ENERGY	(\$209,905.90)	(\$456,862.25)	(\$232,325.68)	(\$210,394.06)	(\$208,740.71)	(\$90,998.51)	(\$146,546.60)
BALANCING LOSSES	\$70,211.94	\$203,925.13	\$183,505.01	\$15,229.42	(\$26,983.92)	(\$104,339.39)	\$37,728.43
BALANCING CONGESTION	\$165,235.23	\$1,506,454.24	\$172,217.66	\$46,382.32	\$132,792.38	(\$55,725.31)	\$205,226.84
FAILED IMPORT CHARGE	\$0.00	(\$3,356.80)	(\$2,044.13)	(\$1,950.61)	\$0.00	\$0.00	(\$3.01)
	26	27	28	29	30	31	
DAM ENERGY	\$1,245,160.82	\$1,067,013.57	\$1,281,742.09	\$1,156,493.05	\$947,913.85	\$817,738.97	
DAM LOSSES	(\$2,207,812.27)	(\$2,084,294.64)	(\$2,525,169.69)	(\$2,184,865.79)	(\$1,841,675.69)	(\$1,575,022.50)	
BALANCING ENERGY	(\$115,386.94)	(\$1,654.67)	(\$86,833.68)	(\$190,719.67)	(\$159,043.33)	(\$218,203.60)	
BALANCING LOSSES	\$133,393.73	\$14,964.20	\$138,003.99	\$154,944.02	\$126,045.80	\$138,310.39	
BALANCING CONGESTION	\$592,737.06	\$227,517.40	\$529,413.00	\$413,306.57	\$709,709.98	\$570,622.05	
FAILED IMPORT CHARGE	(\$69.87)	\$0.00	(\$8.67)	(\$17,160.95)	\$0.00	(\$2,006.87)	



SETTLEMENTS REPORT  
 DECEMBER 2005 SETTLEMENT ADJUSTMENT  
 JANUARY 08, 2007

SETTLEMENT ADJUSTMENT MARKET RESIDUALS DELTA ANALYSIS

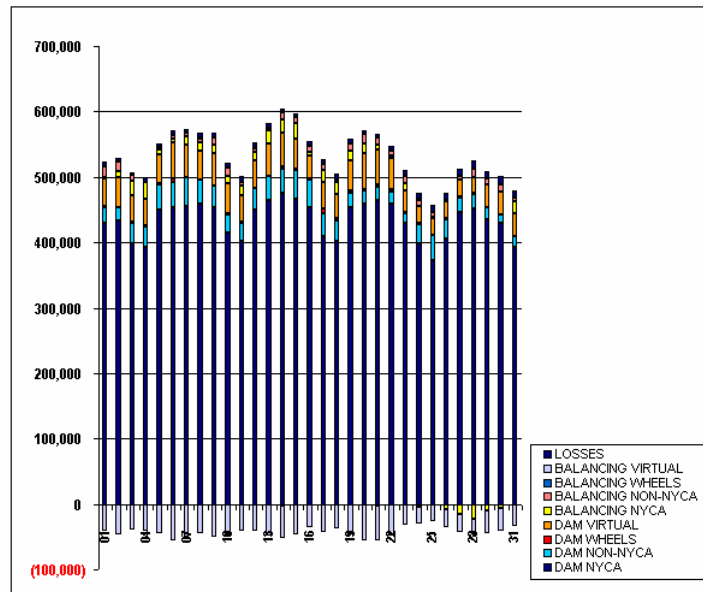
	MONDAY	TUESDAY	WEDNESDAY	THURSDAY	FRIDAY	SATURDAY	SUNDAY
				1	2	3	4
DAM ENERGY				\$0.00	\$0.00	\$0.00	\$0.00
DAM LOSSES				\$0.00	\$0.00	\$0.00	\$0.00
BALANCING ENERGY				\$53.24	\$89.69	\$106.41	\$84.66
BALANCING LOSSES				\$0.48	\$0.93	(\$0.72)	(\$1.72)
BALANCING CONGESTION				\$0.65	\$10.41	\$12.01	\$0.35
FAILED IMPORT CHARGE				\$0.06	\$0.00	\$0.05	(\$0.01)
	5	6	7	8	9	10	11
DAM ENERGY	\$0.00	\$0.00	\$0.00	\$0.00	\$0.00	\$0.00	\$0.00
DAM LOSSES	\$0.00	\$0.00	\$0.00	\$0.00	\$0.00	\$0.00	\$0.00
BALANCING ENERGY	\$33.17	\$7.45	\$10.77	(\$2,171.11)	\$8.91	\$7.92	\$7.11
BALANCING LOSSES	\$0.23	\$0.47	\$0.59	\$17.92	\$0.22	\$0.96	\$0.83
BALANCING CONGESTION	\$0.26	\$0.16	\$0.03	\$0.76	\$0.49	\$1.51	\$0.69
FAILED IMPORT CHARGE	\$0.07	(\$0.07)	\$0.01	\$0.00	\$0.02	\$0.02	\$0.01
	12	13	14	15	16	17	18
DAM ENERGY	(\$0.02)	\$0.00	\$0.00	\$0.00	\$0.00	\$0.00	\$0.00
DAM LOSSES	\$0.04	\$0.00	\$0.00	\$0.00	\$0.00	\$0.00	\$0.00
BALANCING ENERGY	\$11.77	\$11.75	\$22.84	\$15.46	\$0.20	\$11.25	\$8.62
BALANCING LOSSES	\$0.15	\$0.56	(\$196.86)	\$0.35	\$53.94	\$96.67	\$100.74
BALANCING CONGESTION	\$0.21	\$1.13	(\$161.39)	\$0.50	\$0.16	\$0.92	\$0.08
FAILED IMPORT CHARGE	(\$0.05)	\$0.03	\$0.00	\$0.05	\$0.03	\$0.00	\$0.00
	19	20	21	22	23	24	25
DAM ENERGY	\$0.00	\$0.00	\$0.00	\$0.00	\$0.00	\$0.00	\$0.00
DAM LOSSES	\$0.00	\$0.00	\$0.00	\$0.00	\$0.00	\$0.00	\$0.00
BALANCING ENERGY	\$9.28	\$10.77	\$57,474.91	\$12.90	\$8.33	\$6.90	\$10.76
BALANCING LOSSES	\$41.67	\$37.64	\$2,917.89	\$100.91	\$85.83	\$87.06	\$85.07
BALANCING CONGESTION	\$0.17	\$3.21	\$10.25	\$0.25	\$0.80	(\$5.98)	(\$10.44)
FAILED IMPORT CHARGE	\$0.00	\$0.00	\$0.02	\$0.01	\$0.00	\$0.00	\$0.00
	26	27	28	29	30	31	
DAM ENERGY	\$0.00	\$0.00	\$0.00	\$0.00	\$0.00	\$0.00	
DAM LOSSES	\$0.00	\$0.00	\$0.00	\$0.00	\$0.00	\$0.00	
BALANCING ENERGY	\$48,396.29	\$12.06	\$6.06	\$59.72	\$6.58	\$8.60	
BALANCING LOSSES	\$3,463.22	\$83.00	\$66.88	\$62.35	\$85.17	\$133.81	
BALANCING CONGESTION	\$1,976.14	\$107.23	\$1.71	\$5.59	\$269.52	\$20.02	
FAILED IMPORT CHARGE	(\$0.01)	\$0.00	\$0.01	(\$0.01)	\$0.00	(\$0.06)	



SETTLEMENTS REPORT  
DECEMBER 2005 SETTLEMENT ADJUSTMENT  
JANUARY 08, 2007

4-MONTH SETTLEMENT ADJUSTMENT MARKET WITHDRAWALS ANALYSIS

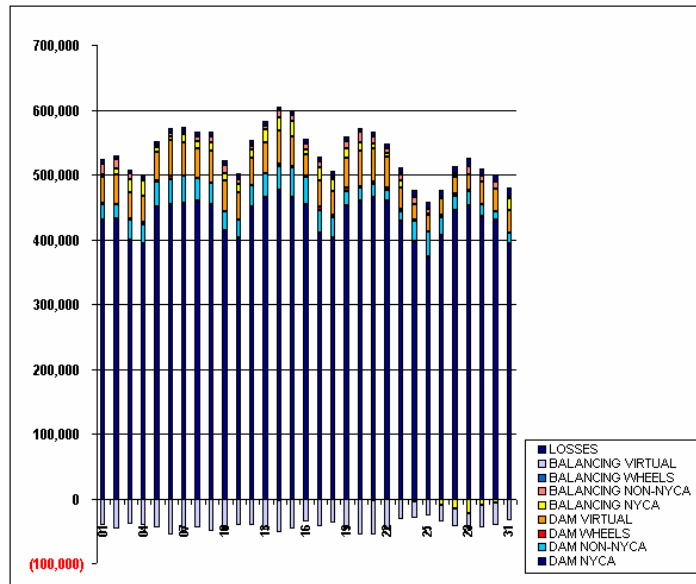
	MONDAY	TUESDAY	WEDNESDAY	THURSDAY	FRIDAY	SATURDAY	SUNDAY
				1	2	3	4
DAM NYCA				430,422	432,758	398,832	393,598
DAM NON-NYCA				23,529	20,866	31,362	30,042
DAM WHEELS				1,307	300	1,971	2,150
DAM VIRTUAL				41,768	46,315	39,662	40,952
BALANCING NYCA				2,112	8,218	21,745	24,550
BALANCING NON-NYCA				17,533	14,534	8,955	1,504
BALANCING WHEELS				(198)	0	0	(239)
BALANCING VIRTUAL				(41,768)	(46,315)	(39,662)	(40,951)
UFE/LOSSES				7,134	6,268	5,151	6,233
	5	6	7	8	9	10	11
DAM NYCA	449,594	453,670	456,103	459,658	454,266	414,531	401,837
DAM NON-NYCA	38,740	38,964	42,902	35,806	32,509	28,354	28,053
DAM WHEELS	2,587	5,100	0	0	0	750	1,200
DAM VIRTUAL	44,193	55,673	49,890	44,949	49,847	47,136	40,997
BALANCING NYCA	7,442	4,550	14,018	11,961	12,375	10,823	14,098
BALANCING NON-NYCA	1,840	5,673	3,875	7,066	10,502	12,483	5,973
BALANCING WHEELS	575	102	194	116	86	(100)	106
BALANCING VIRTUAL	(44,193)	(55,673)	(49,890)	(44,949)	(49,847)	(47,136)	(40,997)
UFE/LOSSES	6,108	7,846	6,227	7,479	7,315	7,409	8,779
	12	13	14	15	16	17	18
DAM NYCA	450,798	464,327	475,495	465,904	453,905	409,473	402,672
DAM NON-NYCA	32,649	37,594	37,812	44,430	42,556	35,275	30,925
DAM WHEELS	0	0	3,424	2,334	1,381	6,191	3,200
DAM VIRTUAL	41,664	48,207	50,546	46,415	34,083	40,737	36,729
BALANCING NYCA	12,529	20,411	20,812	23,780	7,014	18,649	18,783
BALANCING NON-NYCA	6,612	4,630	11,200	8,260	8,347	9,151	3,873
BALANCING WHEELS	800	0	(2,361)	(922)	(1,381)	(1,604)	(267)
BALANCING VIRTUAL	(41,663)	(48,207)	(50,546)	(46,415)	(34,083)	(40,737)	(36,729)
UFE/LOSSES	8,091	6,840	6,008	6,424	6,943	7,210	8,520
	19	20	21	22	23	24	25
DAM NYCA	452,759	459,160	464,405	459,173	428,874	397,835	373,248
DAM NON-NYCA	22,251	20,385	20,644	17,835	14,621	29,626	38,070
DAM WHEELS	4,149	1,800	3,360	3,300	3,383	2,384	0
DAM VIRTUAL	46,176	54,521	52,680	48,099	32,727	24,884	25,868
BALANCING NYCA	15,243	14,287	7,405	3,950	10,924	(4,475)	2,486
BALANCING NON-NYCA	11,188	15,862	11,487	8,271	10,224	10,323	6,452
BALANCING WHEELS	(742)	(1,123)	(3,219)	(221)	574	1,009	400
BALANCING VIRTUAL	(46,176)	(54,521)	(52,680)	(48,099)	(32,727)	(24,883)	(25,868)
UFE/LOSSES	6,676	5,937	6,625	7,576	8,976	10,323	11,019
	26	27	28	29	30	31	
DAM NYCA	406,489	445,728	452,091	435,459	430,171	393,704	
DAM NON-NYCA	27,978	22,115	21,400	18,240	13,149	16,297	
DAM WHEELS	2,400	2,100	2,160	0	0	0	
DAM VIRTUAL	26,221	26,640	23,846	35,035	34,013	34,148	
BALANCING NYCA	(8,605)	(15,697)	(22,211)	(9,584)	(6,929)	19,076	
BALANCING NON-NYCA	2,235	4,290	12,808	9,209	11,885	4,365	
BALANCING WHEELS	100	353	496	0	0	0	
BALANCING VIRTUAL	(26,221)	(26,640)	(23,846)	(35,035)	(34,013)	(34,148)	
UFE/LOSSES	9,740	11,838	12,525	11,709	11,577	11,398	



SETTLEMENTS REPORT  
 DECEMBER 2005 SETTLEMENT ADJUSTMENT  
 JANUARY 08, 2007

12-MONTH SETTLEMENT ADJUSTMENT MARKET WITHDRAWALS ANALYSIS

	MONDAY	TUESDAY	WEDNESDAY	THURSDAY	FRIDAY	SATURDAY	SUNDAY
				1	2	3	4
DAM NYCA				430,422	432,750	398,832	393,598
DAM NON-NYCA				23,529	20,866	31,362	30,042
DAM WHEELS				1,307	300	1,971	2,150
DAM VIRTUAL				41,768	46,315	39,662	40,952
BALANCING NYCA				2,111	6,217	21,749	24,549
BALANCING NON-NYCA				17,533	14,534	8,955	1,504
BALANCING WHEELS				(198)	0	0	(239)
BALANCING VIRTUAL				(41,768)	(46,315)	(39,662)	(40,951)
UFE/LOSSES				7,134	6,271	5,153	6,234
	5	6	7	8	9	10	11
DAM NYCA	449,594	453,670	456,103	459,658	454,266	414,531	401,837
DAM NON-NYCA	38,740	38,964	42,902	35,606	32,509	28,354	28,053
DAM WHEELS	2,587	5,100	0	0	0	750	1,200
DAM VIRTUAL	44,193	55,673	49,890	44,949	49,847	47,136	40,997
BALANCING NYCA	7,441	4,550	14,018	11,991	12,375	10,822	14,098
BALANCING NON-NYCA	1,840	5,673	3,675	7,066	10,502	12,493	5,973
BALANCING WHEELS	575	102	194	116	86	(100)	106
BALANCING VIRTUAL	(44,193)	(55,673)	(49,890)	(44,949)	(49,847)	(47,136)	(40,997)
UFE/LOSSES	6,109	7,846	6,227	7,448	7,315	7,409	8,780
	12	13	14	15	16	17	18
DAM NYCA	450,798	464,327	475,495	465,904	453,905	409,473	402,672
DAM NON-NYCA	32,649	37,594	37,612	44,430	42,556	35,275	30,925
DAM WHEELS	0	0	3,424	2,334	1,381	6,191	3,200
DAM VIRTUAL	41,664	48,207	50,546	46,415	34,083	40,737	36,729
BALANCING NYCA	12,529	20,411	20,812	23,780	7,008	18,649	18,792
BALANCING NON-NYCA	6,612	4,630	11,200	8,260	8,347	9,151	3,873
BALANCING WHEELS	800	0	(2,361)	(922)	(1,381)	(1,604)	(267)
BALANCING VIRTUAL	(41,663)	(48,207)	(50,546)	(46,415)	(34,083)	(40,737)	(36,729)
UFE/LOSSES	8,091	6,840	6,008	6,424	6,943	7,211	8,520
	19	20	21	22	23	24	25
DAM NYCA	452,759	459,160	464,405	459,173	428,974	397,935	373,248
DAM NON-NYCA	22,251	20,385	20,644	17,835	14,621	29,626	38,070
DAM WHEELS	4,149	1,800	3,360	3,300	3,383	2,384	0
DAM VIRTUAL	46,176	54,521	52,680	48,099	32,727	24,884	25,868
BALANCING NYCA	15,250	14,287	6,825	3,947	10,324	(4,476)	2,486
BALANCING NON-NYCA	11,168	15,662	11,487	8,271	10,224	10,323	6,452
BALANCING WHEELS	(742)	(1,123)	(3,219)	(221)	574	1,009	400
BALANCING VIRTUAL	(46,176)	(54,521)	(52,680)	(48,099)	(32,727)	(24,883)	(25,868)
UFE/LOSSES	6,676	5,937	7,205	7,576	8,976	10,323	11,019
	26	27	28	29	30	31	
DAM NYCA	406,489	445,728	452,091	435,459	430,171	393,704	
DAM NON-NYCA	27,978	22,115	21,400	18,240	13,149	16,297	
DAM WHEELS	2,400	2,100	2,160	0	0	0	
DAM VIRTUAL	26,221	26,640	23,846	35,035	34,013	34,148	
BALANCING NYCA	(9,582)	(15,697)	(22,211)	(9,586)	(6,929)	19,075	
BALANCING NON-NYCA	2,235	4,290	12,908	9,209	11,885	4,365	
BALANCING WHEELS	100	353	496	0	0	0	
BALANCING VIRTUAL	(26,221)	(26,640)	(23,846)	(35,035)	(34,013)	(34,148)	
UFE/LOSSES	10,717	11,838	12,525	11,710	11,577	11,398	

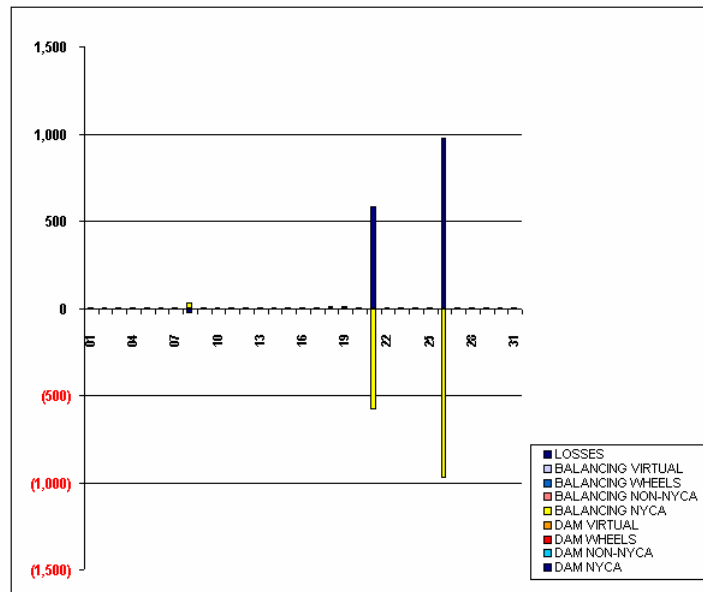




SETTLEMENTS REPORT  
 DECEMBER 2005 SETTLEMENT ADJUSTMENT  
 JANUARY 08, 2007

SETTLEMENT ADJUSTMENT MARKET WITHDRAWALS DELTA ANALYSIS

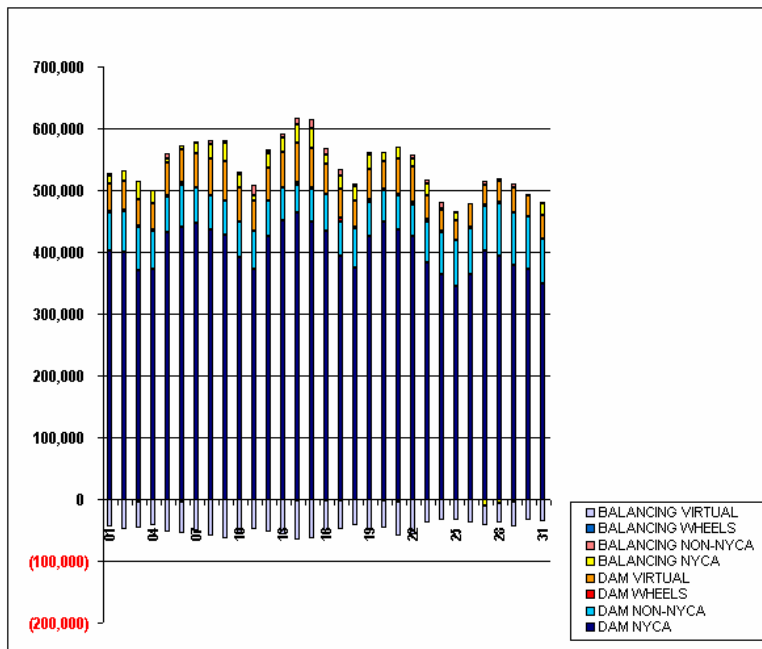
	MONDAY	TUESDAY	WEDNESDAY	THURSDAY	FRIDAY	SATURDAY	SUNDAY
				1	2	3	4
DAM NYCA				0	0	0	0
DAM NON-NYCA				0	0	0	0
DAM WHEELS				0	0	0	0
DAM VIRTUAL				0	0	0	0
BALANCING NYCA				(1)	(1)	(1)	(1)
BALANCING NON-NYCA				0	0	0	0
BALANCING WHEELS				0	0	0	0
BALANCING VIRTUAL				0	0	0	0
UFE/LOSSES				1	1	1	1
	5	6	7	8	9	10	11
DAM NYCA	0	0	0	0	0	0	0
DAM NON-NYCA	0	0	0	0	0	0	0
DAM WHEELS	0	0	0	0	0	0	0
DAM VIRTUAL	0	0	0	0	0	0	0
BALANCING NYCA	(1)	(0)	(0)	30	(0)	(0)	(0)
BALANCING NON-NYCA	0	0	0	0	0	0	0
BALANCING WHEELS	0	0	0	0	0	0	0
BALANCING VIRTUAL	0	0	0	0	0	0	0
UFE/LOSSES	1	0	0	(30)	0	0	0
	12	13	14	15	16	17	18
DAM NYCA	0	0	0	0	0	0	0
DAM NON-NYCA	0	0	0	0	0	0	0
DAM WHEELS	0	0	0	0	0	0	0
DAM VIRTUAL	0	0	0	0	0	0	0
BALANCING NYCA	(0)	(0)	(0)	(0)	(5)	(0)	8
BALANCING NON-NYCA	0	0	0	0	0	0	0
BALANCING WHEELS	0	0	0	0	0	0	0
BALANCING VIRTUAL	0	0	0	0	0	0	0
UFE/LOSSES	0	0	0	0	0	0	0
	19	20	21	22	23	24	25
DAM NYCA	0	0	0	0	0	0	0
DAM NON-NYCA	0	0	0	0	0	0	0
DAM WHEELS	0	0	0	0	0	0	0
DAM VIRTUAL	0	0	0	0	0	0	0
BALANCING NYCA	7	(0)	(580)	(2)	0	(0)	0
BALANCING NON-NYCA	0	0	0	0	0	0	0
BALANCING WHEELS	0	0	0	0	0	0	0
BALANCING VIRTUAL	0	0	0	0	0	0	0
UFE/LOSSES	0	0	580	0	0	0	0
	26	27	28	29	30	31	
DAM NYCA	0	0	0	0	0	0	
DAM NON-NYCA	0	0	0	0	0	0	
DAM WHEELS	0	0	0	0	0	0	
DAM VIRTUAL	0	0	0	0	0	0	
BALANCING NYCA	(976)	(0)	(0)	(1)	0	(0)	
BALANCING NON-NYCA	0	0	0	0	0	0	
BALANCING WHEELS	0	0	0	0	0	0	
BALANCING VIRTUAL	0	0	0	0	0	0	
UFE/LOSSES	977	0	0	1	0	0	



SETTLEMENTS REPORT  
DECEMBER 2005 SETTLEMENT ADJUSTMENT  
JANUARY 08, 2007

4-MONTH SETTLEMENT ADJUSTMENT MARKET SUPPLY ANALYSIS

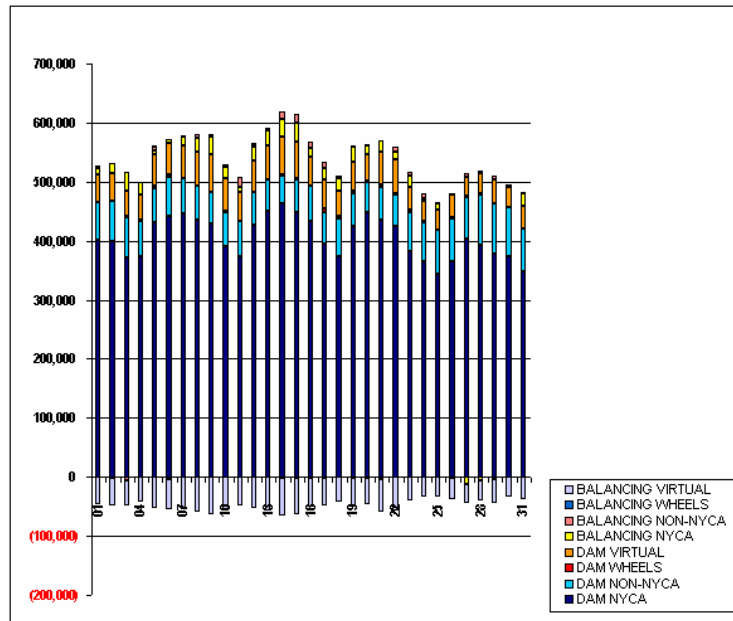
	MONDAY	TUESDAY	WEDNESDAY	THURSDAY	FRIDAY	SATURDAY	SUNDAY
				1	2	3	4
DAM NYCA				401,619	399,946	370,860	372,793
DAM NON-NYCA				63,227	66,802	69,689	61,182
DAM WHEELS				1,307	300	1,971	2,150
DAM VIRTUAL				45,478	47,032	42,752	42,178
BALANCING NYCA				11,352	16,847	30,488	22,290
BALANCING NON-NYCA				4,531	(950)	(4,887)	(281)
BALANCING WHEELS				(198)	0	0	(239)
BALANCING VIRTUAL				(45,478)	(47,032)	(42,752)	(42,178)
	5	6	7	8	9	10	11
DAM NYCA	431,434	441,181	446,508	435,738	428,471	390,503	372,834
DAM NON-NYCA	58,320	66,902	58,643	56,563	54,384	58,352	60,403
DAM WHEELS	2,587	5,100	0	0	0	750	1,200
DAM VIRTUAL	53,201	52,200	55,269	59,025	64,071	55,662	49,053
BALANCING NYCA	6,506	6,347	16,141	23,054	29,818	19,968	8,111
BALANCING NON-NYCA	7,756	(3,644)	1,959	6,407	4,479	4,883	17,392
BALANCING WHEELS	575	102	194	116	86	(100)	106
BALANCING VIRTUAL	(53,201)	(52,200)	(55,269)	(59,025)	(64,071)	(55,662)	(49,053)
	12	13	14	15	16	17	18
DAM NYCA	426,417	451,197	464,257	448,799	433,748	394,651	373,409
DAM NON-NYCA	56,130	52,714	45,307	54,007	58,982	54,055	64,705
DAM WHEELS	0	0	3,424	2,334	1,381	6,191	3,200
DAM VIRTUAL	53,850	57,239	63,459	63,185	48,628	47,886	42,530
BALANCING NYCA	22,748	24,960	30,744	31,696	14,168	19,942	22,950
BALANCING NON-NYCA	5,384	4,930	10,800	14,296	11,866	11,190	3,710
BALANCING WHEELS	800	0	(2,361)	(922)	(1,381)	(1,604)	(267)
BALANCING VIRTUAL	(53,850)	(57,238)	(63,459)	(63,185)	(48,628)	(47,886)	(42,530)
	19	20	21	22	23	24	25
DAM NYCA	425,044	447,926	436,214	424,507	382,679	364,241	343,753
DAM NON-NYCA	56,067	51,662	55,072	53,050	66,215	67,684	74,656
DAM WHEELS	4,149	1,800	3,360	3,300	3,383	2,384	0
DAM VIRTUAL	49,043	45,296	55,976	56,929	39,220	33,900	33,711
BALANCING NYCA	23,930	15,579	19,178	13,265	18,864	2,992	11,371
BALANCING NON-NYCA	3,406	264	126	7,222	6,097	8,860	1,581
BALANCING WHEELS	(742)	(1,123)	(3,219)	(221)	574	1,009	400
BALANCING VIRTUAL	(49,043)	(45,298)	(55,976)	(56,929)	(39,220)	(33,900)	(33,711)
	26	27	28	29	30	31	
DAM NYCA	364,402	402,813	392,974	378,977	373,351	348,457	
DAM NON-NYCA	73,209	71,631	85,762	84,245	84,085	73,201	
DAM WHEELS	2,400	2,100	2,160	0	0	0	
DAM VIRTUAL	38,009	31,977	33,244	41,074	34,051	37,070	
BALANCING NYCA	(682)	(11,621)	(6,019)	(3,898)	3,018	20,861	
BALANCING NON-NYCA	1,347	5,517	4,497	5,708	(352)	2,301	
BALANCING WHEELS	100	353	496	0	0	0	
BALANCING VIRTUAL	(38,009)	(31,977)	(33,244)	(41,074)	(34,051)	(37,070)	



SETTLEMENTS REPORT  
DECEMBER 2005 SETTLEMENT ADJUSTMENT  
JANUARY 08, 2007

12-MONTH SETTLEMENT ADJUSTMENT MARKET SUPPLY ANALYSIS

	MONDAY	TUESDAY	WEDNESDAY	THURSDAY	FRIDAY	SATURDAY	SUNDAY
				1	2	3	4
DAM NYCA				401,619	399,946	370,860	372,793
DAM NON-NYCA				63,227	66,802	69,689	61,182
DAM WHEELS				1,307	300	1,971	2,150
DAM VIRTUAL				45,478	47,032	42,752	42,178
BALANCING NYCA				11,352	16,847	30,488	22,290
BALANCING NON-NYCA				4,531	(950)	(4,887)	(281)
BALANCING WHEELS				(198)	0	0	(239)
BALANCING VIRTUAL				(45,478)	(47,032)	(42,752)	(42,178)
	5	6	7	8	9	10	11
DAM NYCA	431,434	441,181	446,508	435,738	428,471	390,503	372,834
DAM NON-NYCA	58,320	66,902	58,643	56,563	54,384	58,352	60,403
DAM WHEELS	2,587	5,100	0	0	0	750	1,200
DAM VIRTUAL	53,201	52,200	55,289	59,025	64,071	55,662	49,053
BALANCING NYCA	6,506	6,347	16,141	23,054	29,818	19,968	8,111
BALANCING NON-NYCA	7,756	(3,644)	1,959	6,407	4,479	4,883	17,392
BALANCING WHEELS	575	102	194	116	86	(100)	106
BALANCING VIRTUAL	(53,201)	(52,200)	(55,289)	(59,025)	(64,071)	(55,662)	(49,053)
	12	13	14	15	16	17	18
DAM NYCA	426,417	451,197	464,257	448,799	433,748	394,651	373,409
DAM NON-NYCA	56,130	52,714	45,307	54,007	58,982	54,055	64,705
DAM WHEELS	0	0	3,424	2,334	1,381	6,191	3,200
DAM VIRTUAL	53,850	57,239	63,459	63,185	48,828	47,886	42,530
BALANCING NYCA	22,748	24,960	30,744	31,696	14,163	19,942	22,958
BALANCING NON-NYCA	5,384	4,930	10,800	14,296	11,866	11,190	3,710
BALANCING WHEELS	600	0	(2,361)	(922)	(1,381)	(1,604)	(267)
BALANCING VIRTUAL	(53,850)	(57,238)	(63,459)	(63,185)	(48,628)	(47,886)	(42,530)
	19	20	21	22	23	24	25
DAM NYCA	425,044	447,926	436,214	424,507	382,679	364,241	343,753
DAM NON-NYCA	56,067	51,662	55,072	53,050	66,215	67,684	74,656
DAM WHEELS	4,149	1,800	3,360	3,300	3,383	2,384	0
DAM VIRTUAL	49,043	45,298	55,976	56,929	39,220	33,900	33,711
BALANCING NYCA	23,937	15,579	19,178	13,263	18,864	2,992	11,371
BALANCING NON-NYCA	3,406	264	126	7,222	6,097	8,860	1,581
BALANCING WHEELS	(742)	(1,123)	(3,219)	(221)	574	1,009	400
BALANCING VIRTUAL	(49,043)	(45,298)	(55,976)	(56,929)	(39,220)	(33,900)	(33,711)
	26	27	28	29	30	31	
DAM NYCA	364,402	402,813	392,974	378,977	373,351	348,457	
DAM NON-NYCA	73,209	71,631	85,762	84,245	84,085	73,201	
DAM WHEELS	2,400	2,100	2,160	0	0	0	
DAM VIRTUAL	38,009	31,977	33,244	41,074	34,051	37,070	
BALANCING NYCA	(881)	(11,621)	(6,019)	(3,898)	3,018	20,881	
BALANCING NON-NYCA	1,347	5,517	4,497	5,708	(352)	2,301	
BALANCING WHEELS	100	353	496	0	0	0	
BALANCING VIRTUAL	(38,009)	(31,977)	(33,244)	(41,074)	(34,051)	(37,070)	



SETTLEMENTS REPORT  
 DECEMBER 2005 SETTLEMENT ADJUSTMENT  
 JANUARY 08, 2007

SETTLEMENT ADJUSTMENT MARKET SUPPLY DELTA ANALYSIS

	MONDAY	TUESDAY	WEDNESDAY	THURSDAY	FRIDAY	SATURDAY	SUNDAY
				1	2	3	4
DAM NYCA				0	0	0	0
DAM NON-NYCA				0	0	0	0
DAM WHEELS				0	0	0	0
DAM VIRTUAL				0	0	0	0
BALANCING NYCA				0	(0)	(0)	0
BALANCING NON-NYCA				0	0	0	0
BALANCING WHEELS				0	0	0	0
BALANCING VIRTUAL				0	0	0	0
	5	6	7	8	9	10	11
DAM NYCA	0	0	0	0	0	0	0
DAM NON-NYCA	0	0	0	0	0	0	0
DAM WHEELS	0	0	0	0	0	0	0
DAM VIRTUAL	0	0	0	0	0	0	0
BALANCING NYCA	0	0	0	0	0	0	0
BALANCING NON-NYCA	0	0	0	0	0	0	0
BALANCING WHEELS	0	0	0	0	0	0	0
BALANCING VIRTUAL	0	0	0	0	0	0	0
	12	13	14	15	16	17	18
DAM NYCA	0	0	0	0	0	0	0
DAM NON-NYCA	0	0	0	0	0	0	0
DAM WHEELS	0	0	0	0	0	0	0
DAM VIRTUAL	0	0	0	0	0	0	0
BALANCING NYCA	0	0	0	0	(5)	0	8
BALANCING NON-NYCA	0	0	0	0	0	0	0
BALANCING WHEELS	0	0	0	0	0	0	0
BALANCING VIRTUAL	0	0	0	0	0	0	0
	19	20	21	22	23	24	25
DAM NYCA	0	0	0	0	0	0	0
DAM NON-NYCA	0	0	0	0	0	0	0
DAM WHEELS	0	0	0	0	0	0	0
DAM VIRTUAL	0	0	0	0	0	0	0
BALANCING NYCA	7	(0)	(0)	(2)	0	(0)	0
BALANCING NON-NYCA	0	0	0	0	0	0	0
BALANCING WHEELS	0	0	0	0	0	0	0
BALANCING VIRTUAL	0	0	0	0	0	0	0
	26	27	28	29	30	31	
DAM NYCA	0	0	0	0	0	0	
DAM NON-NYCA	0	0	0	0	0	0	
DAM WHEELS	0	0	0	0	0	0	
DAM VIRTUAL	0	0	0	0	0	0	
BALANCING NYCA	1	(0)	0	(0)	0	(0)	
BALANCING NON-NYCA	0	0	0	0	0	0	
BALANCING WHEELS	0	0	0	0	0	0	
BALANCING VIRTUAL	0	0	0	0	0	0	

