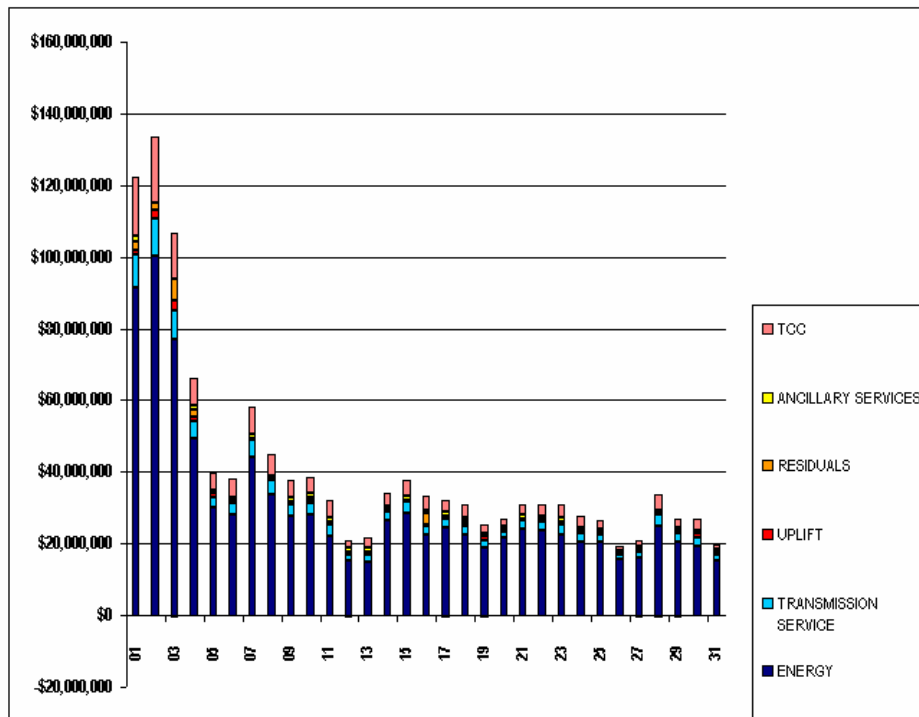


SETTLEMENTS REPORT
AUGUST 2006 SETTLEMENT ADJUSTMENT
JANUARY 8, 2007

INITIAL SETTLEMENT MARKET COSTS ANALYSIS

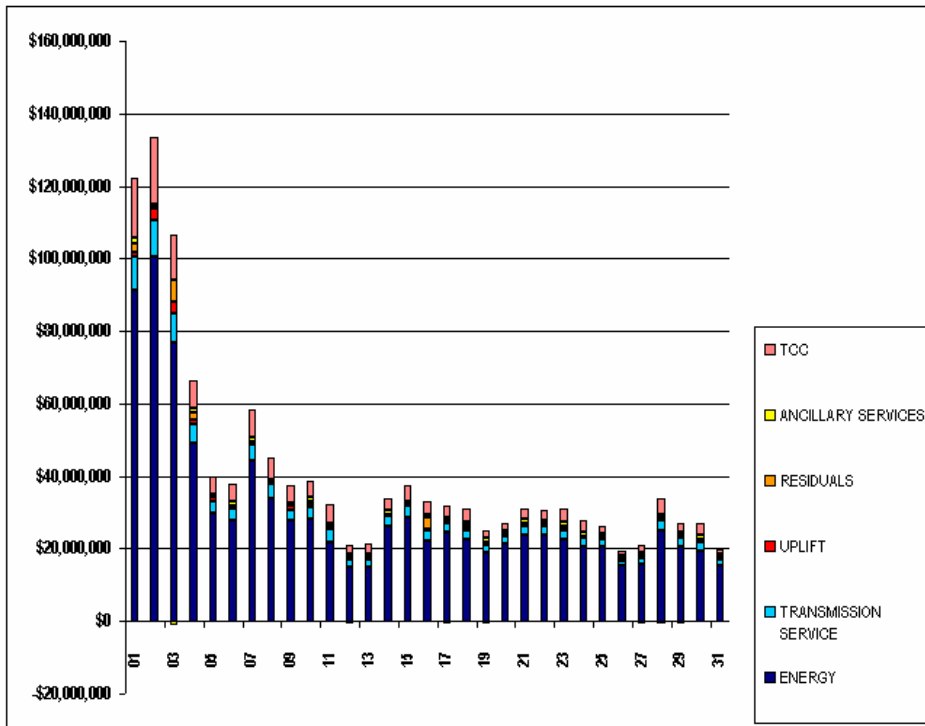
	MONDAY	TUESDAY	WEDNESDAY	THURSDAY	FRIDAY	SATURDAY	SUNDAY
		1	2	3	4	5	6
ENERGY		\$91,356,939.17	\$100,401,546.88	\$77,040,921.34	\$49,228,603.67	\$29,949,703.22	\$27,937,570.95
TRANSMISSION SERVICE		\$9,224,757.98	\$10,376,359.01	\$8,033,328.36	\$4,976,955.75	\$3,137,749.98	\$3,230,637.71
UPLIFT		\$1,133,290.57	\$2,238,505.94	\$2,830,565.54	\$1,174,376.22	\$965,726.30	\$848,997.38
RESIDUALS		\$2,447,485.11	\$1,953,516.53	\$6,066,616.51	\$2,041,028.34	(\$138,759.89)	(\$460,613.29)
ANCILLARY SERVICES		\$1,716,032.25	\$200,339.30	(\$952,906.60)	\$1,273,215.60	\$1,012,603.24	\$956,324.07
TCC		\$16,328,209.66	\$18,531,103.72	\$12,550,583.86	\$7,662,741.53	\$4,787,648.24	\$5,064,271.55
	7	8	9	10	11	12	13
ENERGY	\$44,113,891.84	\$33,853,255.92	\$27,726,171.56	\$28,240,308.73	\$21,918,562.97	\$15,134,621.93	\$15,056,000.57
TRANSMISSION SERVICE	\$4,671,407.11	\$3,805,163.07	\$3,018,987.44	\$3,084,965.11	\$3,499,047.80	\$1,646,472.05	\$1,852,101.68
UPLIFT	\$698,573.86	\$439,258.79	\$1,067,603.11	\$825,892.88	\$834,996.67	\$1,082,411.66	\$923,373.72
RESIDUALS	\$18,847.45	(\$41,519.50)	(\$336,327.78)	\$861,035.70	(\$498,485.76)	(\$653,775.54)	(\$162,122.77)
ANCILLARY SERVICES	\$1,104,233.34	\$987,789.04	\$997,441.58	\$1,019,069.82	\$933,934.88	\$834,870.39	\$858,731.82
TCC	\$7,863,683.70	\$6,058,564.33	\$4,810,472.47	\$4,485,109.53	\$4,984,439.69	\$2,110,342.51	\$2,812,507.34
	14	15	16	17	18	19	20
ENERGY	\$26,363,586.41	\$28,566,030.89	\$22,315,565.37	\$24,630,229.57	\$22,432,267.07	\$18,924,000.00	\$21,551,834.35
TRANSMISSION SERVICE	\$2,668,887.40	\$3,135,407.34	\$2,487,003.00	\$2,426,145.30	\$2,624,302.62	\$2,007,041.12	\$1,779,793.19
UPLIFT	\$554,692.78	\$446,705.78	\$498,307.52	\$698,244.03	\$642,571.24	\$984,450.75	\$759,288.64
RESIDUALS	(\$295,909.60)	(\$444,993.34)	\$3,151,773.45	(\$630,196.70)	\$744,869.51	(\$605,771.39)	(\$246,950.82)
ANCILLARY SERVICES	\$985,425.56	\$1,048,921.13	\$999,006.48	\$982,128.43	\$955,712.61	\$916,904.33	\$905,718.04
TCC	\$3,407,680.06	\$4,420,277.83	\$3,667,988.47	\$3,277,133.02	\$3,620,515.22	\$2,326,264.26	\$2,067,363.80
	21	22	23	24	25	26	27
ENERGY	\$23,976,318.34	\$23,825,207.17	\$22,476,510.96	\$20,427,951.84	\$20,633,847.64	\$15,506,240.79	\$15,912,369.53
TRANSMISSION SERVICE	\$2,366,568.63	\$2,308,991.23	\$2,721,832.43	\$2,563,210.47	\$2,043,690.65	\$1,222,576.43	\$1,607,637.97
UPLIFT	\$715,368.85	\$713,880.39	\$710,249.17	\$522,857.93	\$538,811.30	\$685,849.15	\$799,230.31
RESIDUALS	(\$226,471.32)	(\$175,924.16)	\$365,190.06	(\$433,599.31)	(\$480,538.94)	(\$427,239.57)	(\$576,937.93)
ANCILLARY SERVICES	\$930,986.04	\$962,186.91	\$986,083.46	\$945,272.90	\$908,966.16	\$837,743.84	\$817,528.27
TCC	\$3,000,482.02	\$2,928,262.74	\$3,635,202.97	\$3,362,345.34	\$2,262,295.32	\$937,898.37	\$1,832,536.33
	28	29	30	31			
ENERGY	\$25,044,917.82	\$20,689,134.63	\$19,484,420.45	\$15,340,577.84			
TRANSMISSION SERVICE	\$2,938,373.50	\$2,305,083.38	\$2,317,041.51	\$1,512,317.86			
UPLIFT	\$515,745.37	\$750,703.25	\$915,944.92	\$817,495.88			
RESIDUALS	(\$694,143.27)	(\$594,066.86)	(\$324,372.16)	(\$352,691.41)			
ANCILLARY SERVICES	\$1,006,881.15	\$917,650.20	\$956,910.89	\$904,176.57			
TCC	\$4,207,539.86	\$2,269,138.61	\$3,366,894.99	\$1,279,885.43			



SETTLEMENTS REPORT
AUGUST 2006 SETTLEMENT ADJUSTMENT
JANUARY 8, 2007

4-MONTH SETTLEMENT ADJUSTMENT MARKET COSTS ANALYSIS

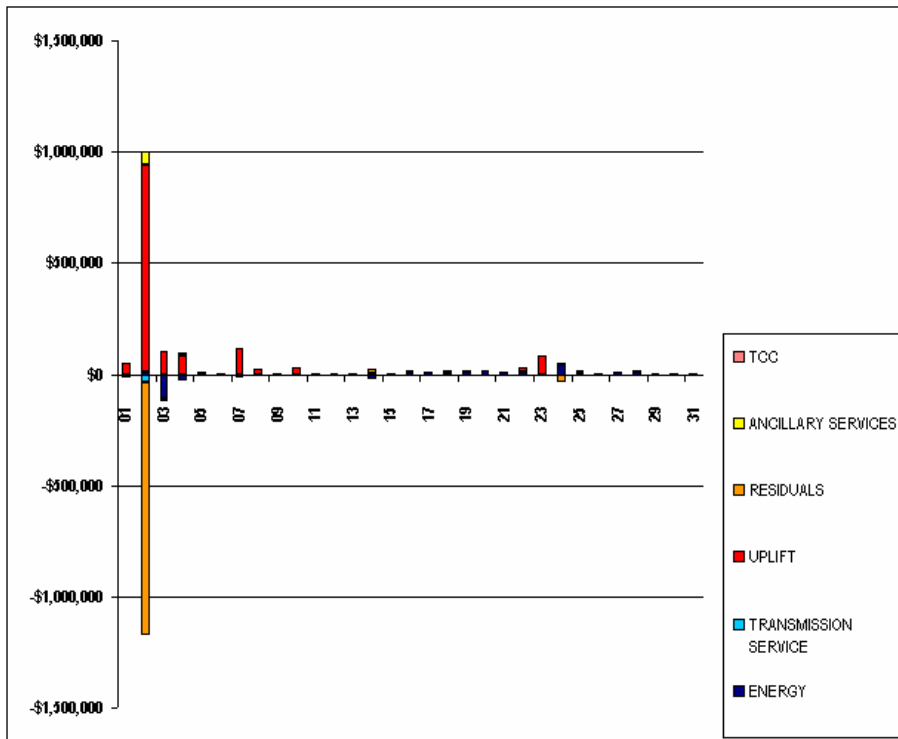
	MONDAY	TUESDAY	WEDNESDAY	THURSDAY	FRIDAY	SATURDAY	SUNDAY
		1	2	3	4	5	6
ENERGY		\$81,345,532.34	\$100,412,560.14	\$76,936,530.27	\$49,205,666.45	\$29,945,241.64	\$27,934,049.03
TRANSMISSION SERVICE		\$9,224,092.03	\$10,336,580.97	\$8,030,873.10	\$4,976,029.00	\$3,137,301.06	\$3,230,263.21
UPLIFT		\$1,163,075.22	\$3,167,454.97	\$2,934,902.56	\$1,254,696.63	\$972,585.27	\$546,762.75
RESIDUALS		\$2,446,092.46	\$820,876.53	\$6,049,091.82	\$2,056,136.41	(\$135,774.87)	(\$458,500.57)
ANCILLARY SERVICES		\$1,715,967.13	\$262,392.40	(\$953,498.31)	\$1,272,467.35	\$1,012,239.16	\$955,685.22
TCC		\$16,328,209.66	\$18,531,103.72	\$12,550,583.86	\$7,662,741.53	\$4,787,648.24	\$5,064,271.55
	7	8	9	10	11	12	13
ENERGY	\$44,106,016.85	\$33,851,899.12	\$27,724,867.51	\$28,238,357.36	\$21,917,852.01	\$15,134,188.39	\$15,055,608.02
TRANSMISSION SERVICE	\$4,670,628.35	\$3,804,786.82	\$3,018,676.65	\$3,084,358.19	\$3,498,628.08	\$1,646,240.69	\$1,851,826.38
UPLIFT	\$712,534.38	\$461,222.31	\$1,067,603.44	\$853,885.07	\$835,610.24	\$1,082,458.29	\$923,360.94
RESIDUALS	\$19,489.91	(\$42,013.43)	(\$335,684.09)	\$861,331.76	(\$497,970.07)	(\$653,181.13)	(\$161,692.31)
ANCILLARY SERVICES	\$1,103,849.68	\$987,526.27	\$997,176.85	\$1,016,726.24	\$933,547.30	\$834,333.97	\$858,224.23
TCC	\$7,863,683.70	\$6,058,564.33	\$4,810,472.47	\$4,485,109.53	\$4,984,439.69	\$2,110,342.51	\$2,812,507.34
	14	15	16	17	18	19	20
ENERGY	\$26,346,392.01	\$28,564,904.50	\$22,323,526.62	\$24,637,564.90	\$22,434,114.62	\$18,937,258.85	\$21,565,785.51
TRANSMISSION SERVICE	\$2,668,215.17	\$3,134,861.35	\$2,486,501.65	\$2,425,765.61	\$2,623,886.47	\$2,006,816.68	\$1,779,338.57
UPLIFT	\$560,887.23	\$449,235.71	\$505,585.81	\$699,190.79	\$645,750.39	\$884,575.61	\$759,887.65
RESIDUALS	(\$279,947.79)	(\$445,212.08)	\$3,151,691.71	(\$630,425.58)	\$756,575.47	(\$606,083.51)	(\$246,834.76)
ANCILLARY SERVICES	\$984,605.64	\$1,048,417.25	\$998,721.01	\$981,730.27	\$955,262.72	\$916,612.02	\$905,532.72
TCC	\$3,407,680.06	\$4,420,277.83	\$3,667,988.47	\$3,277,133.02	\$3,620,515.22	\$2,326,264.26	\$2,067,363.80
	21	22	23	24	25	26	27
ENERGY	\$23,985,765.86	\$23,836,031.33	\$22,470,189.02	\$20,472,153.50	\$20,835,855.85	\$15,500,798.79	\$15,922,916.28
TRANSMISSION SERVICE	\$2,364,973.85	\$2,308,497.63	\$2,720,886.77	\$2,561,768.01	\$2,043,198.26	\$1,222,144.02	\$1,607,286.18
UPLIFT	\$716,200.00	\$735,620.72	\$790,298.13	\$525,477.41	\$549,535.26	\$685,848.41	\$799,230.30
RESIDUALS	(\$225,211.18)	(\$176,139.73)	\$365,631.91	(\$470,115.52)	(\$479,579.59)	(\$427,102.18)	(\$577,464.52)
ANCILLARY SERVICES	\$890,678.67	\$962,194.45	\$985,266.79	\$945,279.24	\$908,549.38	\$836,895.62	\$816,763.45
TCC	\$3,000,482.02	\$2,928,262.74	\$3,635,202.97	\$3,362,345.34	\$2,262,295.32	\$897,898.37	\$1,832,536.33
	28	29	30	31			
ENERGY	\$25,057,769.63	\$20,691,574.28	\$19,479,853.25	\$15,340,121.47			
TRANSMISSION SERVICE	\$2,938,073.37	\$2,304,794.84	\$2,316,598.54	\$1,512,081.20			
UPLIFT	\$516,599.64	\$751,250.30	\$915,945.90	\$817,441.91			
RESIDUALS	(\$692,905.71)	(\$593,767.56)	(\$321,000.03)	(\$351,631.61)			
ANCILLARY SERVICES	\$1,006,524.65	\$917,228.45	\$956,325.71	\$903,632.59			
TCC	\$4,207,539.86	\$2,269,138.61	\$3,366,894.99	\$1,279,885.43			



SETTLEMENTS REPORT
AUGUST 2006 SETTLEMENT ADJUSTMENT
JANUARY 8, 2007

SETTLEMENT ADJUSTMENT MARKET COSTS DELTA ANALYSIS

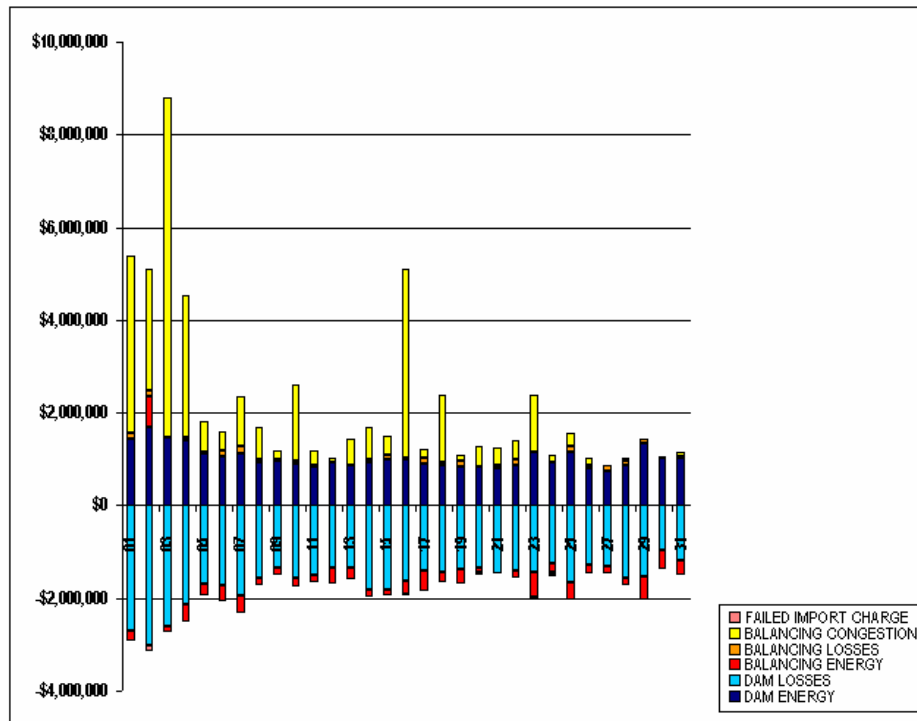
	MONDAY	TUESDAY	WEDNESDAY	THURSDAY	FRIDAY	SATURDAY	SUNDAY
		1	2	3	4	5	6
ENERGY		(\$11,406.83)	\$11,013.26	(\$104,391.07)	(\$22,937.22)	(\$4,461.58)	(\$3,521.92)
TRANSMISSION SERVICE		(\$665.95)	(\$39,778.04)	(\$2,455.26)	(\$926.75)	(\$448.92)	(\$374.50)
UPLIFT		\$49,784.65	\$928,949.03	\$104,337.02	\$80,320.41	\$6,858.97	(\$214.63)
RESIDUALS		(\$1,392.65)	(\$1,132,640.00)	(\$17,524.69)	\$15,108.07	\$2,984.82	\$2,112.72
ANCILLARY SERVICES		(\$165.12)	\$62,053.10	(\$591.71)	(\$748.25)	(\$364.08)	(\$438.85)
TCC		\$0.00	\$0.00	\$0.00	\$0.00	\$0.00	\$0.00
	7	8	9	10	11	12	13
ENERGY	(\$7,874.99)	(\$1,358.80)	(\$1,304.05)	(\$1,951.37)	(\$710.96)	(\$433.54)	(\$392.55)
TRANSMISSION SERVICE	(\$778.76)	(\$376.25)	(\$310.79)	(\$606.92)	(\$419.72)	(\$231.36)	(\$275.30)
UPLIFT	\$113,960.52	\$21,963.52	\$0.33	\$27,992.19	\$613.57	\$46.63	\$7.22
RESIDUALS	\$642.46	(\$493.93)	\$643.69	\$296.06	\$515.69	\$594.41	\$430.46
ANCILLARY SERVICES	(\$383.66)	(\$262.77)	(\$264.73)	(\$343.58)	(\$387.58)	(\$536.42)	(\$507.59)
TCC	\$0.00	\$0.00	\$0.00	\$0.00	\$0.00	\$0.00	\$0.00
	14	15	16	17	18	19	20
ENERGY	(\$17,194.40)	(\$1,126.39)	\$7,961.25	\$7,335.33	\$1,847.55	\$13,258.85	\$13,951.16
TRANSMISSION SERVICE	(\$672.23)	(\$545.99)	(\$501.35)	(\$379.69)	(\$416.15)	(\$224.44)	(\$454.62)
UPLIFT	\$6,194.45	\$2,529.93	\$7,278.29	\$946.76	\$3,179.15	\$124.86	\$599.01
RESIDUALS	\$15,961.81	(\$218.74)	(\$81.74)	(\$228.88)	\$11,705.96	(\$312.12)	\$116.06
ANCILLARY SERVICES	(\$819.92)	(\$503.88)	(\$285.47)	(\$398.16)	(\$449.89)	(\$292.31)	(\$185.32)
TCC	\$0.00	\$0.00	\$0.00	\$0.00	\$0.00	\$0.00	\$0.00
	21	22	23	24	25	26	27
ENERGY	\$9,447.52	\$10,824.16	(\$6,321.94)	\$44,201.66	\$2,008.21	(\$5,442.00)	\$10,546.75
TRANSMISSION SERVICE	(\$1,594.78)	(\$493.60)	(\$345.66)	(\$1,442.46)	(\$492.39)	(\$432.41)	(\$351.79)
UPLIFT	\$831.15	\$21,740.33	\$80,048.96	\$2,619.48	\$10,723.96	(\$0.74)	(\$0.01)
RESIDUALS	\$1,260.14	(\$215.57)	\$441.85	(\$36,516.21)	\$959.35	\$137.39	(\$526.59)
ANCILLARY SERVICES	(\$307.37)	\$7.54	(\$816.67)	\$6.34	(\$416.78)	(\$848.22)	(\$764.82)
TCC	\$0.00	\$0.00	\$0.00	\$0.00	\$0.00	\$0.00	\$0.00
	28	29	30	31			
ENERGY	\$12,851.81	\$2,439.65	(\$4,567.20)	(\$456.37)			
TRANSMISSION SERVICE	(\$300.13)	(\$288.54)	(\$442.97)	(\$236.66)			
UPLIFT	\$854.27	\$547.05	\$0.98	(\$53.97)			
RESIDUALS	\$1,237.56	\$299.30	\$3,372.13	\$1,059.80			
ANCILLARY SERVICES	(\$356.50)	(\$421.75)	(\$585.18)	(\$543.98)			
TCC	\$0.00	\$0.00	\$0.00	\$0.00			



SETTLEMENTS REPORT
AUGUST 2006 SETTLEMENT ADJUSTMENT
JANUARY 8, 2007

INITIAL SETTLEMENT MARKET RESIDUALS ANALYSIS

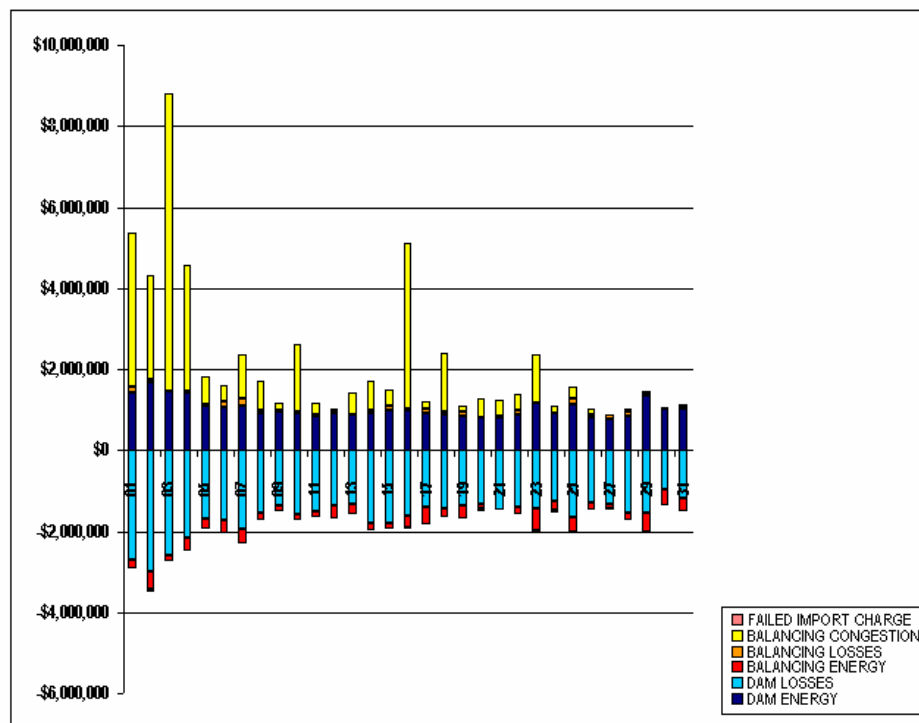
	MONDAY	TUESDAY	WEDNESDAY	THURSDAY	FRIDAY	SATURDAY	SUNDAY
		1	2	3	4	5	6
DAM ENERGY		\$1,430,372.61	\$1,698,198.70	\$1,457,830.40	\$1,419,801.31	\$1,111,446.37	\$1,047,674.92
DAM LOSSES		(\$2,695,741.70)	(\$3,019,702.08)	(\$2,612,793.76)	(\$2,147,635.27)	(\$1,703,206.95)	(\$1,735,713.34)
BALANCING ENERGY		(\$329,491.91)	\$648,681.80	(\$114,567.63)	(\$358,778.69)	(\$252,263.27)	(\$323,139.61)
BALANCING LOSSES		\$143,830.15	\$121,692.49	(\$6,088.56)	\$49,956.13	\$37,621.66	\$140,318.91
BALANCING CONGESTION		\$3,798,568.72	\$2,619,929.80	\$7,346,405.03	\$3,077,716.97	\$672,258.46	\$410,245.83
FAILED IMPORT CHARGE		(\$52.76)	(\$115,284.18)	(\$4,168.97)	(\$32.11)	(\$4,615.96)	\$0.00
	7	8	9	10	11	12	13
DAM ENERGY	\$1,105,405.80	\$925,025.86	\$949,469.72	\$912,499.17	\$842,805.51	\$916,091.76	\$871,067.82
DAM LOSSES	(\$1,961,347.37)	(\$1,553,065.52)	(\$1,360,608.30)	(\$1,582,313.65)	(\$1,496,604.43)	(\$1,350,454.50)	(\$1,330,174.29)
BALANCING ENERGY	(\$363,648.82)	(\$187,235.81)	(\$150,259.73)	(\$162,255.91)	(\$175,076.35)	(\$340,012.49)	(\$262,436.92)
BALANCING LOSSES	\$168,570.51	\$67,423.82	\$33,697.76	\$34,248.77	\$21,866.46	\$16,489.34	\$7,837.92
BALANCING CONGESTION	\$1,070,365.13	\$706,392.17	\$194,870.18	\$1,660,695.90	\$309,633.38	\$106,983.53	\$551,582.70
FAILED IMPORT CHARGE	(\$487.80)	(\$60.02)	(\$3,497.41)	(\$1,638.58)	(\$1,110.33)	(\$2,873.18)	\$0.00
	14	15	16	17	18	19	20
DAM ENERGY	\$820,892.84	\$984,718.18	\$1,001,252.67	\$904,057.72	\$870,915.53	\$849,555.13	\$820,109.69
DAM LOSSES	(\$1,818,563.27)	(\$1,815,398.61)	(\$1,629,943.43)	(\$1,419,884.12)	(\$1,445,188.70)	(\$1,368,510.54)	(\$1,333,985.72)
BALANCING ENERGY	(\$162,984.54)	(\$131,333.09)	(\$277,889.41)	(\$429,061.46)	(\$208,021.21)	(\$323,864.63)	(\$119,499.85)
BALANCING LOSSES	\$66,596.45	\$93,611.14	\$24,269.85	\$124,900.36	\$70,563.55	\$105,829.98	(\$54,118.17)
BALANCING CONGESTION	\$698,217.85	\$424,471.51	\$4,087,338.24	\$190,277.45	\$1,456,608.25	\$131,695.29	\$441,944.83
FAILED IMPORT CHARGE	(\$2,068.93)	(\$1,062.47)	(\$53,254.47)	(\$486.65)	(\$7.91)	(\$476.62)	(\$1,401.60)
	21	22	23	24	25	26	27
DAM ENERGY	\$788,736.79	\$873,014.66	\$1,163,043.62	\$914,389.22	\$1,138,173.54	\$801,648.76	\$753,901.62
DAM LOSSES	(\$1,457,276.94)	(\$1,404,080.23)	(\$1,433,597.98)	(\$1,245,115.26)	(\$1,672,673.76)	(\$1,286,108.38)	(\$1,318,722.22)
BALANCING ENERGY	(\$16,676.45)	(\$166,497.87)	(\$559,077.88)	(\$197,000.44)	(\$359,918.53)	(\$172,314.32)	(\$137,998.37)
BALANCING LOSSES	\$70,133.14	\$104,459.85	(\$10,928.59)	(\$73,996.20)	\$138,358.27	\$78,483.04	\$127,793.08
BALANCING CONGESTION	\$389,958.81	\$419,260.05	\$1,206,206.86	\$174,795.36	\$275,521.54	\$151,051.33	(\$1,912.04)
FAILED IMPORT CHARGE	(\$1,346.67)	(\$2,080.62)	(\$455.97)	(\$6,671.99)	\$0.00	\$0.00	\$0.00
	28	29	30	31			
DAM ENERGY	\$858,140.07	\$1,350,788.71	\$1,010,407.13	\$1,020,165.11			
DAM LOSSES	(\$1,554,095.97)	(\$1,545,546.50)	(\$966,551.61)	(\$1,174,982.19)			
BALANCING ENERGY	(\$165,561.09)	(\$490,410.45)	(\$411,988.25)	(\$321,348.27)			
BALANCING LOSSES	\$97,414.97	\$72,517.13	\$7,143.77	\$27,254.43			
BALANCING CONGESTION	\$70,957.14	\$18,584.25	\$36,623.49	\$96,324.65			
FAILED IMPORT CHARGE	(\$998.39)	\$0.00	(\$6.69)	(\$105.14)			



SETTLEMENTS REPORT
 AUGUST 2006 SETTLEMENT ADJUSTMENT
 JANUARY 8, 2007

4-MONTH SETTLEMENT ADJUSTMENT MARKET RESIDUALS ANALYSIS

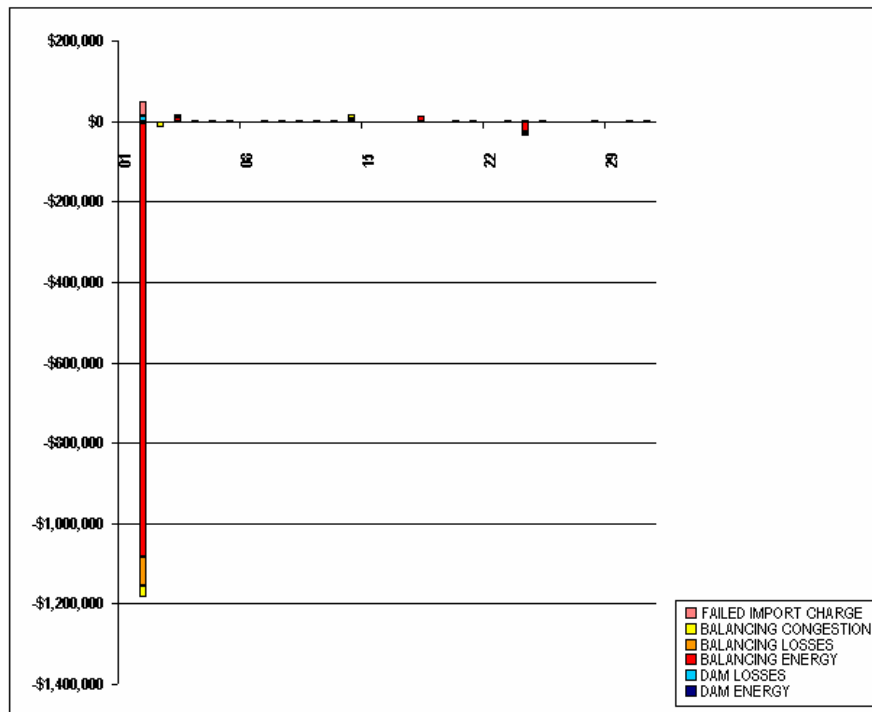
	MONDAY	TUESDAY	WEDNESDAY	THURSDAY	FRIDAY	SATURDAY	SUNDAY
		1	2	3	4	5	6
DAM ENERGY		\$1,430,372.58	\$1,691,552.37	\$1,457,830.40	\$1,419,801.31	\$1,111,446.37	\$1,047,674.92
DAM LOSSES		(\$2,695,741.65)	(\$3,007,689.87)	(\$2,612,793.76)	(\$2,147,635.27)	(\$1,703,206.95)	(\$1,735,713.34)
BALANCING ENERGY		(\$230,538.77)	(\$426,871.60)	(\$115,893.09)	(\$351,003.36)	(\$250,394.44)	(\$321,235.48)
BALANCING LOSSES		\$143,711.31	\$47,123.17	(\$6,256.61)	\$50,717.98	\$37,719.56	\$140,369.17
BALANCING CONGESTION		\$3,798,288.99	\$2,593,972.99	\$7,330,373.83	\$3,084,287.89	\$673,276.60	\$410,404.16
FAILED IMPORT CHARGE		\$0.00	(\$77,210.53)	(\$4,168.95)	(\$32.14)	(\$4,616.01)	\$0.00
	7	8	9	10	11	12	13
DAM ENERGY	\$1,105,405.80	\$925,025.86	\$949,469.72	\$912,499.17	\$842,805.51	\$916,091.76	\$871,067.82
DAM LOSSES	(\$1,961,347.37)	(\$1,553,065.52)	(\$1,360,608.30)	(\$1,582,313.65)	(\$1,496,604.44)	(\$1,350,454.50)	(\$1,330,174.29)
BALANCING ENERGY	(\$363,338.94)	(\$187,957.92)	(\$148,716.60)	(\$161,733.93)	(\$174,640.60)	(\$339,227.89)	(\$261,972.90)
BALANCING LOSSES	\$168,531.65	\$67,431.99	\$33,646.52	\$34,187.54	\$21,819.53	\$16,365.38	\$7,721.81
BALANCING CONGESTION	\$1,070,736.53	\$706,612.15	\$195,021.93	\$1,660,531.29	\$309,760.28	\$106,917.27	\$651,665.25
FAILED IMPORT CHARGE	(\$497.76)	(\$59.99)	(\$3,497.36)	(\$1,838.66)	(\$1,110.35)	(\$2,873.15)	\$0.00
	14	15	16	17	18	19	20
DAM ENERGY	\$920,892.84	\$984,718.18	\$1,001,252.67	\$904,057.72	\$870,915.53	\$849,555.13	\$820,109.69
DAM LOSSES	(\$1,818,563.27)	(\$1,815,398.61)	(\$1,629,943.43)	(\$1,419,884.12)	(\$1,445,188.70)	(\$1,368,510.54)	(\$1,333,985.72)
BALANCING ENERGY	(\$158,121.99)	(\$131,533.66)	(\$277,921.82)	(\$428,854.05)	(\$195,520.62)	(\$323,879.52)	(\$119,215.38)
BALANCING LOSSES	\$68,990.11	\$93,467.82	\$24,053.50	\$124,522.33	\$69,659.08	\$105,408.33	(\$54,683.08)
BALANCING CONGESTION	\$706,923.42	\$424,596.70	\$4,087,505.23	\$190,219.20	\$1,456,718.10	\$131,819.67	\$442,341.37
FAILED IMPORT CHARGE	(\$2,068.90)	(\$1,062.51)	(\$53,254.44)	(\$486.66)	(\$7.92)	(\$476.58)	(\$1,401.64)
	21	22	23	24	25	26	27
DAM ENERGY	\$788,736.79	\$873,014.66	\$1,163,043.62	\$914,389.22	\$1,138,173.54	\$801,648.76	\$753,901.62
DAM LOSSES	(\$1,457,276.94)	(\$1,404,080.23)	(\$1,433,597.98)	(\$1,245,115.26)	(\$1,672,673.76)	(\$1,286,108.38)	(\$1,318,722.22)
BALANCING ENERGY	(\$16,423.74)	(\$166,525.82)	(\$558,382.15)	(\$224,577.65)	(\$358,806.80)	(\$171,958.66)	(\$138,238.81)
BALANCING LOSSES	\$69,776.67	\$104,141.13	(\$11,300.33)	(\$76,874.54)	\$138,157.64	\$78,238.42	\$127,507.35
BALANCING CONGESTION	\$390,124.76	\$419,391.04	\$1,206,324.98	\$167,628.89	\$275,569.79	\$151,077.68	(\$1,912.46)
FAILED IMPORT CHARGE	(\$148.72)	(\$2,080.71)	(\$456.23)	(\$5,566.18)	\$0.00	\$0.00	\$0.00
	28	29	30	31			
DAM ENERGY	\$858,140.07	\$1,350,788.71	\$1,010,407.13	\$1,020,165.11			
DAM LOSSES	(\$1,554,095.97)	(\$1,545,546.50)	(\$966,551.61)	(\$1,174,982.19)			
BALANCING ENERGY	(\$163,930.25)	(\$490,011.38)	(\$408,782.50)	(\$320,216.51)			
BALANCING LOSSES	\$97,024.78	\$72,411.51	\$7,284.59	\$27,181.39			
BALANCING CONGESTION	\$70,954.03	\$18,590.10	\$37,649.08	\$96,325.74			
FAILED IMPORT CHARGE	(\$938.37)	\$0.00	(\$6.72)	(\$105.15)			



SETTLEMENTS REPORT
AUGUST 2006 SETTLEMENT ADJUSTMENT
JANUARY 8, 2007

SETTLEMENT ADJUSTMENT MARKET RESIDUALS DELTA ANALYSIS

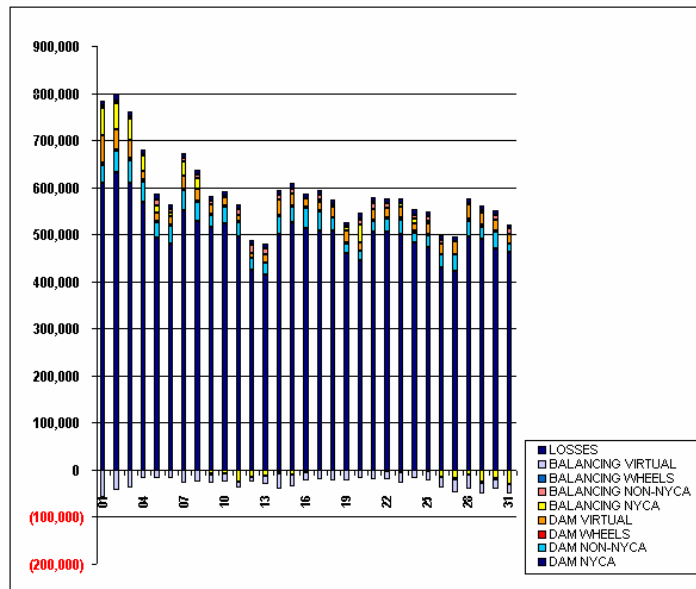
	MONDAY	TUESDAY	WEDNESDAY	THURSDAY	FRIDAY	SATURDAY	SUNDAY
		1	2	3	4	5	6
DAM ENERGY		(\$0.03)	(\$6,646.33)	\$0.00	\$0.00	\$0.00	\$0.00
DAM LOSSES		\$0.05	\$12,012.21	\$0.00	\$0.00	\$0.00	\$0.00
BALANCING ENERGY		(\$1,046.86)	(\$1,075,553.40)	(\$1,325.46)	\$7,775.33	\$1,868.83	\$1,904.13
BALANCING LOSSES		(\$118.84)	(\$74,569.32)	(\$168.05)	\$761.85	\$97.90	\$50.26
BALANCING CONGESTION		(\$279.73)	(\$25,956.81)	(\$16,031.20)	\$6,570.92	\$1,018.14	\$158.33
FAILED IMPORT CHARGE		\$52.76	\$38,073.65	\$0.02	(\$0.03)	(\$0.05)	\$0.00
	7	8	9	10	11	12	13
DAM ENERGY	\$0.00	\$0.00	\$0.00	\$0.00	\$0.00	\$0.00	\$0.00
DAM LOSSES	\$0.00	\$0.00	\$0.00	\$0.00	(\$0.01)	\$0.00	\$0.00
BALANCING ENERGY	\$309.88	(\$722.11)	\$543.13	\$521.98	\$435.75	\$784.60	\$464.02
BALANCING LOSSES	(\$38.86)	\$8.17	(\$51.24)	(\$61.23)	(\$46.93)	(\$123.96)	(\$116.11)
BALANCING CONGESTION	\$371.40	\$219.98	\$151.75	(\$164.61)	\$126.90	(\$66.26)	\$82.55
FAILED IMPORT CHARGE	\$0.04	\$0.03	\$0.05	(\$0.08)	(\$0.02)	\$0.03	\$0.00
	14	15	16	17	18	19	20
DAM ENERGY	\$0.00	\$0.00	\$0.00	\$0.00	\$0.00	\$0.00	\$0.00
DAM LOSSES	\$0.00	\$0.00	\$0.00	\$0.00	\$0.00	\$0.00	\$0.00
BALANCING ENERGY	\$6,862.55	(\$200.57)	(\$32.41)	\$207.41	\$12,500.59	(\$14.89)	\$284.47
BALANCING LOSSES	\$393.66	(\$143.32)	(\$216.35)	(\$378.03)	(\$904.47)	(\$421.65)	(\$564.91)
BALANCING CONGESTION	\$8,705.57	\$125.19	\$166.99	(\$58.25)	\$109.85	\$124.38	\$396.54
FAILED IMPORT CHARGE	\$0.03	(\$0.04)	\$0.03	(\$0.01)	(\$0.01)	\$0.04	(\$0.04)
	21	22	23	24	25	26	27
DAM ENERGY	\$0.00	\$0.00	\$0.00	\$0.00	\$0.00	\$0.00	\$0.00
DAM LOSSES	\$0.00	\$0.00	\$0.00	\$0.00	\$0.00	\$0.00	\$0.00
BALANCING ENERGY	\$252.71	(\$27.75)	\$695.73	(\$27,577.21)	\$1,111.73	\$355.66	(\$240.44)
BALANCING LOSSES	(\$356.47)	(\$318.72)	(\$371.74)	(\$2,878.34)	(\$200.63)	(\$244.62)	(\$285.73)
BALANCING CONGESTION	\$165.95	\$130.99	\$118.12	(\$7,166.47)	\$48.25	\$26.35	(\$0.42)
FAILED IMPORT CHARGE	\$1,197.95	(\$0.09)	(\$0.26)	\$1,105.81	\$0.00	\$0.00	\$0.00
	28	29	30	31			
DAM ENERGY	\$0.00	\$0.00	\$0.00	\$0.00			
DAM LOSSES	\$0.00	\$0.00	\$0.00	\$0.00			
BALANCING ENERGY	\$1,630.84	\$399.07	\$2,205.75	\$1,131.76			
BALANCING LOSSES	(\$390.19)	(\$105.62)	\$140.82	(\$73.04)			
BALANCING CONGESTION	(\$3.11)	\$5.85	\$1,025.59	\$1.09			
FAILED IMPORT CHARGE	\$0.02	\$0.00	(\$0.03)	(\$0.01)			



SETTLEMENTS REPORT
AUGUST 2006 SETTLEMENT ADJUSTMENT
JANUARY 8, 2007

INITIAL SETTLEMENT MARKET WITHDRAWALS ANALYSIS

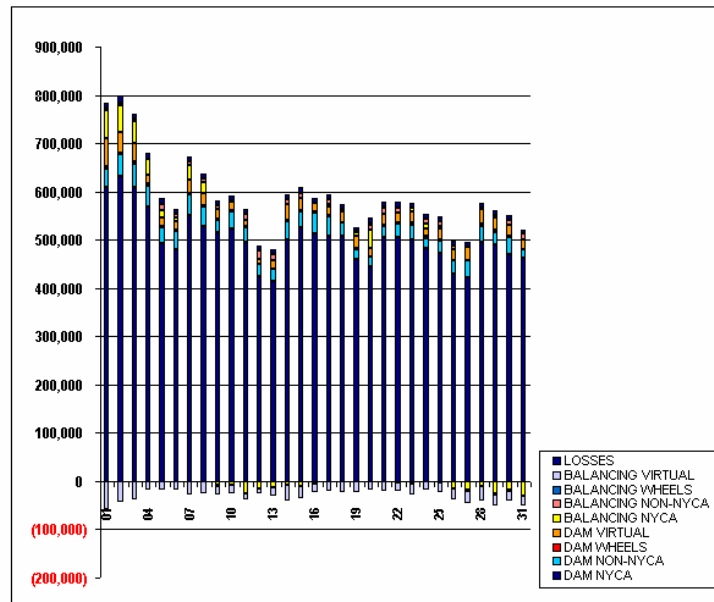
	MONDAY	TUESDAY	WEDNESDAY	THURSDAY	FRIDAY	SATURDAY	SUNDAY
		1	2	3	4	5	6
DAM NYCA		609,528	632,772	609,490	568,256	493,818	479,941
DAM NON-NYCA		38,302	44,034	48,470	44,314	33,044	38,620
DAM WHEELS		3,946	3,294	4,921	4,518	2,400	2,037
DAM VIRTUAL		58,093	43,243	36,522	16,644	16,786	18,020
BALANCING NYCA		57,934	54,894	45,347	33,500	16,314	6,605
BALANCING NON-NYCA		4,828	5,519	5,743	1,581	11,143	8,338
BALANCING WHEELS		(218)	238	(750)	(262)	(131)	200
BALANCING VIRTUAL		(58,093)	(43,243)	(36,522)	(16,644)	(16,786)	(18,019)
UFE/LOSSES		11,542	14,641	11,359	11,691	12,465	11,089
	7	8	9	10	11	12	13
DAM NYCA	550,728	528,302	515,671	524,038	496,600	425,190	413,897
DAM NON-NYCA	42,323	39,923	25,881	34,583	29,554	24,266	26,052
DAM WHEELS	3,632	4,200	2,700	2,997	2,700	0	0
DAM VIRTUAL	27,549	25,363	19,521	17,349	13,329	11,511	17,400
BALANCING NYCA	31,088	21,345	(8,738)	(7,592)	(24,499)	(14,634)	(12,603)
BALANCING NON-NYCA	6,442	6,537	7,638	2,954	10,386	16,633	12,486
BALANCING WHEELS	0	(423)	(525)	(297)	(250)	941	332
BALANCING VIRTUAL	(27,549)	(25,363)	(19,521)	(17,349)	(13,328)	(11,511)	(17,400)
UFE/LOSSES	11,075	10,642	9,743	9,309	9,896	9,831	10,920
	14	15	16	17	18	19	20
DAM NYCA	501,051	526,277	513,331	508,141	508,873	461,029	444,850
DAM NON-NYCA	37,427	31,879	43,114	39,722	26,817	19,948	19,598
DAM WHEELS	2,760	3,300	1,400	2,167	1,200	3,000	1,200
DAM VIRTUAL	32,851	25,710	17,666	19,387	21,530	23,021	17,049
BALANCING NYCA	(6,384)	(10,891)	(4,794)	4,442	4,194	7,381	36,986
BALANCING NON-NYCA	10,246	9,834	(742)	10,755	2,189	3,295	11,945
BALANCING WHEELS	(1,020)	794	(300)	(780)	(600)	(75)	1,200
BALANCING VIRTUAL	(32,851)	(25,710)	(17,666)	(19,387)	(21,530)	(23,021)	(17,049)
UFE/LOSSES	10,556	12,237	10,180	9,058	8,345	8,647	11,900
	21	22	23	24	25	26	27
DAM NYCA	505,704	505,772	499,415	482,270	471,866	429,530	420,860
DAM NON-NYCA	23,775	26,796	32,144	21,821	27,018	27,141	36,197
DAM WHEELS	2,550	3,134	4,460	3,300	2,282	800	1,543
DAM VIRTUAL	20,860	19,377	21,794	16,830	21,717	21,901	27,242
BALANCING NYCA	1,571	147	7,337	9,843	4,994	(16,010)	(18,110)
BALANCING NON-NYCA	12,580	12,012	(3,166)	7,936	10,803	9,365	(1,827)
BALANCING WHEELS	858	(1,600)	(2,131)	(1,029)	(1,523)	0	0
BALANCING VIRTUAL	(20,860)	(19,377)	(21,794)	(16,830)	(21,716)	(21,901)	(27,242)
UFE/LOSSES	11,442	10,140	11,528	12,123	10,306	9,634	8,814
	28	29	30	31			
DAM NYCA	494,989	491,595	468,996	462,511			
DAM NON-NYCA	34,258	24,789	37,187	17,384			
DAM WHEELS	4,226	3,776	1,400	1,400			
DAM VIRTUAL	30,714	24,555	22,629	20,403			
BALANCING NYCA	(10,523)	(24,489)	(18,873)	(30,376)			
BALANCING NON-NYCA	1,993	5,961	11,287	10,165			
BALANCING WHEELS	(671)	(2,811)	(350)	359			
BALANCING VIRTUAL	(30,714)	(24,555)	(22,629)	(20,403)			
UFE/LOSSES	10,596	10,641	8,628	9,386			



SETTLEMENTS REPORT
AUGUST 2006 SETTLEMENT ADJUSTMENT
JANUARY 8, 2007

4-MONTH SETTLEMENT ADJUSTMENT MARKET WITHDRAWALS ANALYSIS

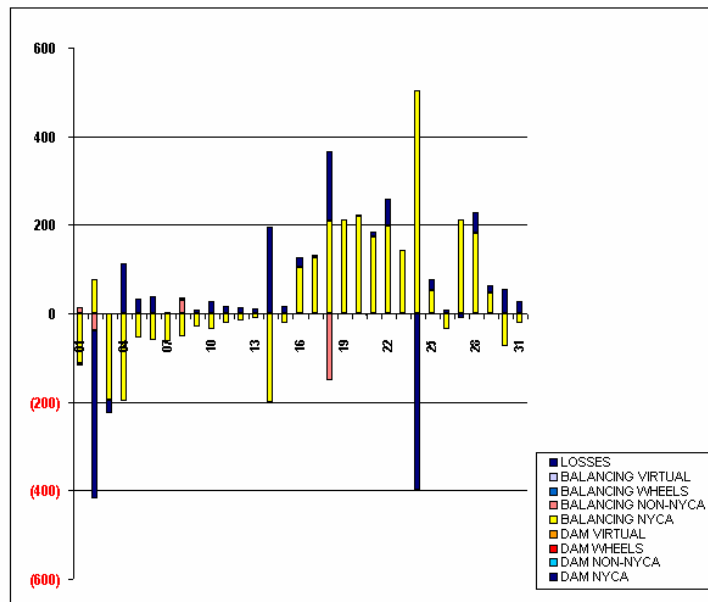
	MONDAY	TUESDAY	WEDNESDAY	THURSDAY	FRIDAY	SATURDAY	SUNDAY
		1	2	3	4	5	6
DAW NYCA		609,528	632,772	609,490	566,256	493,818	479,941
DAW NON-NYCA		38,302	44,034	48,470	44,314	33,044	38,620
DAW WHEELS		3,946	3,284	4,921	4,518	2,400	2,037
DAW VIRTUAL		50,093	43,243	36,522	16,644	16,706	18,020
BALANCING NYCA		57,821	54,972	45,152	33,303	16,259	6,545
BALANCING NON-NYCA		4,841	5,482	5,743	1,581	11,143	8,338
BALANCING WHEELS		(218)	238	(750)	(262)	(131)	200
BALANCING VIRTUAL		(58,093)	(43,243)	(36,522)	(16,644)	(16,786)	(18,019)
UFE/LOSSES		11,538	14,260	11,330	11,802	12,498	11,129
	7	8	9	10	11	12	13
DAW NYCA	550,728	528,302	515,671	524,038	496,600	425,190	413,697
DAW NON-NYCA	42,323	39,923	25,881	34,583	29,554	24,266	26,052
DAW WHEELS	3,632	4,200	2,700	2,997	2,700	0	0
DAW VIRTUAL	27,549	25,363	19,521	17,349	13,329	11,511	17,400
BALANCING NYCA	31,024	21,292	(8,770)	(7,628)	(24,522)	(14,651)	(12,613)
BALANCING NON-NYCA	6,442	6,568	7,638	2,954	10,386	16,633	12,498
BALANCING WHEELS	0	(423)	(525)	(297)	(250)	941	332
BALANCING VIRTUAL	(27,549)	(25,363)	(19,521)	(17,349)	(13,328)	(11,511)	(17,400)
UFE/LOSSES	11,078	10,647	9,752	9,335	9,913	9,845	10,930
	14	15	16	17	18	19	20
DAW NYCA	501,051	526,277	513,331	508,141	508,873	461,029	444,650
DAW NON-NYCA	37,427	31,879	43,114	39,722	26,817	19,948	19,598
DAW WHEELS	2,760	3,300	1,400	2,167	1,200	3,000	1,200
DAW VIRTUAL	32,851	25,710	17,666	19,387	21,530	23,021	17,049
BALANCING NYCA	(6,586)	(10,913)	(4,691)	4,568	4,402	7,592	37,207
BALANCING NON-NYCA	10,246	9,834	(742)	10,755	2,039	3,295	11,945
BALANCING WHEELS	(1,020)	794	(300)	(780)	(600)	(75)	1,200
BALANCING VIRTUAL	(32,851)	(25,710)	(17,666)	(19,387)	(21,530)	(23,021)	(17,049)
UFE/LOSSES	10,751	12,253	10,183	9,065	8,504	8,643	11,903
	21	22	23	24	25	26	27
DAW NYCA	505,704	505,772	499,415	482,270	471,866	429,530	420,860
DAW NON-NYCA	23,775	26,796	32,144	21,821	27,018	27,141	36,197
DAW WHEELS	2,550	3,134	4,460	3,300	2,282	800	1,543
DAW VIRTUAL	20,660	19,377	21,794	16,630	21,717	21,901	27,242
BALANCING NYCA	1,745	346	7,479	10,345	5,047	(16,045)	(17,897)
BALANCING NON-NYCA	12,560	12,012	(3,166)	7,936	10,803	9,365	(1,827)
BALANCING WHEELS	858	(1,600)	(2,131)	(1,029)	(1,523)	0	0
BALANCING VIRTUAL	(20,660)	(19,377)	(21,794)	(16,630)	(21,716)	(21,901)	(27,242)
UFE/LOSSES	11,452	10,199	11,527	11,725	10,332	9,641	8,802
	28	29	30	31			
DAW NYCA	494,989	491,595	468,996	462,511			
DAW NON-NYCA	34,258	24,789	37,187	17,384			
DAW WHEELS	4,226	3,776	1,400	1,400			
DAW VIRTUAL	30,714	24,555	22,629	20,403			
BALANCING NYCA	(10,341)	(24,444)	(18,948)	(30,398)			
BALANCING NON-NYCA	1,993	5,961	11,287	10,165			
BALANCING WHEELS	(671)	(2,811)	(350)	359			
BALANCING VIRTUAL	(30,714)	(24,555)	(22,629)	(20,403)			
UFE/LOSSES	10,643	10,659	8,683	9,414			



SETTLEMENTS REPORT
 AUGUST 2006 SETTLEMENT ADJUSTMENT
 JANUARY 8, 2007

SETTLEMENT ADJUSTMENT MARKET WITHDRAWALS DELTA ANALYSIS

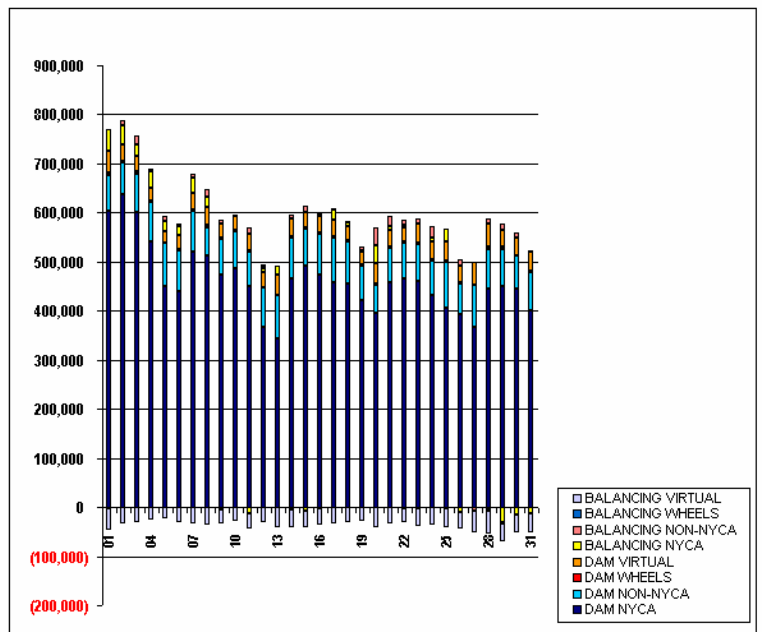
	MONDAY	TUESDAY	WEDNESDAY	THURSDAY	FRIDAY	SATURDAY	SUNDAY
		1	2	3	4	5	6
DAM NYCA	0	0	0	0	0	0	0
DAM NON-NYCA	0	0	0	0	0	0	0
DAM WHEELS	0	0	0	0	0	0	0
DAM VIRTUAL	0	0	0	0	0	0	0
BALANCING NYCA		(113)	78	(195)	(197)	(54)	(60)
BALANCING NON-NYCA		13	(38)	0	0	0	0
BALANCING WHEELS		0	0	0	0	0	0
BALANCING VIRTUAL		0	0	0	0	0	0
UFE/LOSSES		(5)	(381)	(30)	112	33	39
	7	8	9	10	11	12	13
DAM NYCA	0	0	0	0	0	0	0
DAM NON-NYCA	0	0	0	0	0	0	0
DAM WHEELS	0	0	0	0	0	0	0
DAM VIRTUAL	0	0	0	0	0	0	0
BALANCING NYCA	(64)	(52)	(31)	(37)	(23)	(17)	(11)
BALANCING NON-NYCA	0	31	0	0	0	0	0
BALANCING WHEELS	0	0	0	0	0	0	0
BALANCING VIRTUAL	0	0	0	0	0	0	0
UFE/LOSSES	3	5	9	26	17	14	10
	14	15	16	17	18	19	20
DAM NYCA	0	0	0	0	0	0	0
DAM NON-NYCA	0	0	0	0	0	0	0
DAM WHEELS	0	0	0	0	0	0	0
DAM VIRTUAL	0	0	0	0	0	0	0
BALANCING NYCA	(202)	(21)	104	125	208	212	221
BALANCING NON-NYCA	0	0	0	0	(150)	0	0
BALANCING WHEELS	0	0	0	0	0	0	0
BALANCING VIRTUAL	0	0	0	0	0	0	0
UFE/LOSSES	195	16	23	8	159	(3)	3
	21	22	23	24	25	26	27
DAM NYCA	0	0	0	0	0	0	0
DAM NON-NYCA	0	0	0	0	0	0	0
DAM WHEELS	0	0	0	0	0	0	0
DAM VIRTUAL	0	0	0	0	0	0	0
BALANCING NYCA	174	199	142	502	53	(36)	213
BALANCING NON-NYCA	0	0	0	0	0	0	0
BALANCING WHEELS	0	0	0	0	0	0	0
BALANCING VIRTUAL	0	0	0	0	0	0	0
UFE/LOSSES	10	58	(1)	(399)	26	7	(12)
	28	29	30	31			
DAM NYCA	0	0	0	0			
DAM NON-NYCA	0	0	0	0			
DAM WHEELS	0	0	0	0			
DAM VIRTUAL	0	0	0	0			
BALANCING NYCA	182	46	(75)	(22)			
BALANCING NON-NYCA	0	0	0	0			
BALANCING WHEELS	0	0	0	0			
BALANCING VIRTUAL	0	0	0	0			
UFE/LOSSES	48	18	55	28			



SETTLEMENTS REPORT
AUGUST 2006 SETTLEMENT ADJUSTMENT
JANUARY 8, 2007

INITIAL SETTLEMENT MARKET SUPPLY ANALYSIS

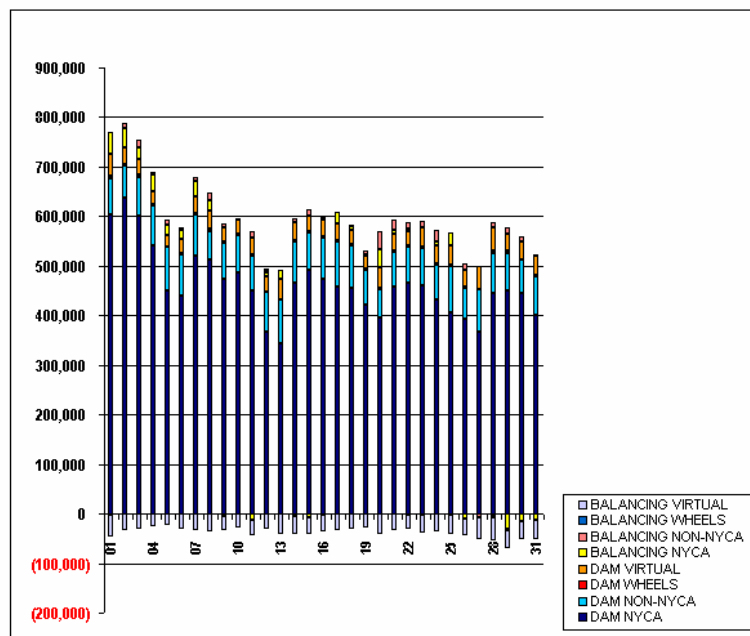
	MONDAY	TUESDAY	WEDNESDAY	THURSDAY	FRIDAY	SATURDAY	SUNDAY
		1	2	3	4	5	6
DAM NYCA		602,295	637,230	601,267	541,544	449,329	439,806
DAM NON-NYCA		75,172	65,517	78,073	79,268	88,054	83,568
DAM WHEELS		3,946	3,294	4,921	4,518	2,400	2,037
DAM VIRTUAL		43,398	33,012	30,353	25,308	22,739	29,826
BALANCING NYCA		46,398	38,194	24,995	33,317	20,856	16,259
BALANCING NON-NYCA		(1,731)	10,829	16,075	5,263	8,545	4,960
BALANCING WHEELS		(218)	238	(750)	(262)	(131)	200
BALANCING VIRTUAL		(43,398)	(33,012)	(30,353)	(25,308)	(22,739)	(29,826)
	7	8	9	10	11	12	13
DAM NYCA	520,278	513,093	474,358	486,563	450,002	367,347	342,500
DAM NON-NYCA	83,461	57,477	72,618	74,952	70,851	79,504	89,545
DAM WHEELS	3,632	4,200	2,700	2,997	2,700	0	0
DAM VIRTUAL	32,441	37,032	28,979	28,348	32,312	31,011	41,359
BALANCING NYCA	30,245	21,184	(4,223)	(321)	(11,853)	9,300	18,404
BALANCING NON-NYCA	7,872	15,184	7,582	2,173	12,857	5,135	115
BALANCING WHEELS	0	(423)	(525)	(297)	(250)	941	332
BALANCING VIRTUAL	(32,441)	(37,032)	(28,979)	(28,348)	(32,312)	(31,011)	(41,359)
	14	15	16	17	18	19	20
DAM NYCA	466,121	490,869	474,745	458,173	454,954	421,262	396,076
DAM NON-NYCA	83,399	75,860	83,038	90,865	86,624	69,624	57,009
DAM WHEELS	2,760	3,300	1,400	2,167	1,200	3,000	1,200
DAM VIRTUAL	35,964	31,902	32,745	34,048	30,307	27,424	41,987
BALANCING NYCA	(3,861)	(8,190)	(3,214)	22,112	6,461	974	35,801
BALANCING NON-NYCA	7,538	10,965	6,618	1,118	2,379	8,439	36,394
BALANCING WHEELS	(1,020)	794	(300)	(780)	(600)	(75)	1,200
BALANCING VIRTUAL	(35,964)	(31,902)	(32,745)	(34,048)	(30,307)	(27,424)	(41,987)
	21	22	23	24	25	26	27
DAM NYCA	457,313	466,558	460,647	431,618	406,005	392,312	367,693
DAM NON-NYCA	70,802	70,944	74,700	70,930	93,684	64,240	84,122
DAM WHEELS	2,550	3,134	4,460	3,300	2,282	800	1,543
DAM VIRTUAL	34,420	28,116	37,389	34,017	40,034	35,523	45,285
BALANCING NYCA	8,241	7,092	67	8,649	25,354	(9,495)	1,292
BALANCING NON-NYCA	18,796	10,596	11,844	22,796	(56)	12,604	(7,173)
BALANCING WHEELS	858	(1,600)	(2,131)	(1,029)	(1,523)	0	0
BALANCING VIRTUAL	(34,420)	(28,116)	(37,389)	(34,017)	(40,034)	(35,523)	(45,285)
	28	29	30	31			
DAM NYCA	443,953	449,316	444,394	400,341			
DAM NON-NYCA	81,756	76,503	67,469	78,987			
DAM WHEELS	4,226	3,776	1,400	1,400			
DAM VIRTUAL	47,317	35,863	35,983	38,902			
BALANCING NYCA	(6,227)	(30,557)	(15,648)	(13,115)			
BALANCING NON-NYCA	11,831	13,234	11,011	3,108			
BALANCING WHEELS	(671)	(2,811)	(350)	359			
BALANCING VIRTUAL	(47,317)	(35,863)	(35,983)	(38,902)			



SETTLEMENTS REPORT
AUGUST 2006 SETTLEMENT ADJUSTMENT
JANUARY 8, 2007

4-MONTH SETTLEMENT ADJUSTMENT MARKET SUPPLY ANALYSIS

	MONDAY	TUESDAY	WEDNESDAY	THURSDAY	FRIDAY	SATURDAY	SUNDAY
		1	2	3	4	5	6
DAM NYCA		602,295	637,230	601,267	541,544	449,329	439,806
DAM NON-NYCA		75,172	65,517	78,073	79,268	88,054	83,568
DAM WHEELS		3,946	3,294	4,921	4,518	2,400	2,037
DAM VIRTUAL		43,398	33,012	30,353	25,308	22,739	29,826
BALANCING NYCA		46,293	37,853	24,814	33,232	20,835	16,239
BALANCING NON-NYCA		(1,731)	10,829	16,030	5,263	8,545	4,960
BALANCING WHEELS		(218)	238	(750)	(262)	(131)	200
BALANCING VIRTUAL		(43,398)	(33,012)	(30,353)	(25,308)	(22,739)	(29,826)
	7	8	9	10	11	12	13
DAM NYCA	520,278	513,106	474,358	486,583	450,010	367,347	342,500
DAM NON-NYCA	83,461	57,477	72,618	74,952	70,931	79,504	89,545
DAM WHEELS	3,632	4,200	2,700	2,997	2,700	0	0
DAM VIRTUAL	32,441	37,032	28,979	28,348	32,312	31,011	41,359
BALANCING NYCA	30,183	21,155	(4,245)	(351)	(11,867)	9,297	18,403
BALANCING NON-NYCA	7,872	15,184	7,592	2,173	12,857	5,135	115
BALANCING WHEELS	0	(423)	(525)	(297)	(250)	941	332
BALANCING VIRTUAL	(32,441)	(37,032)	(28,979)	(28,348)	(32,312)	(31,011)	(41,359)
	14	15	16	17	18	19	20
DAM NYCA	466,132	490,890	474,767	458,180	454,954	421,262	396,076
DAM NON-NYCA	83,399	75,860	83,038	90,865	86,624	69,624	57,009
DAM WHEELS	2,760	3,300	1,400	2,167	1,200	3,000	1,200
DAM VIRTUAL	35,964	31,902	32,745	34,048	30,307	27,424	41,987
BALANCING NYCA	(3,880)	(8,217)	(3,109)	22,238	6,678	1,183	36,024
BALANCING NON-NYCA	7,538	10,965	6,618	1,118	2,379	8,439	36,394
BALANCING WHEELS	(1,020)	794	(300)	(780)	(600)	(75)	1,200
BALANCING VIRTUAL	(35,964)	(31,902)	(32,745)	(34,048)	(30,307)	(27,424)	(41,987)
	21	22	23	24	25	26	27
DAM NYCA	457,321	466,620	460,647	431,619	406,005	392,312	367,693
DAM NON-NYCA	70,802	70,944	74,700	70,930	93,684	64,240	84,122
DAM WHEELS	2,550	3,134	4,460	3,300	2,282	800	1,543
DAM VIRTUAL	34,420	28,116	37,389	34,017	40,034	35,523	45,285
BALANCING NYCA	8,416	7,287	208	8,752	25,432	(9,524)	1,493
BALANCING NON-NYCA	18,796	10,596	11,844	22,796	(56)	12,604	(7,173)
BALANCING WHEELS	858	(1,600)	(2,131)	(1,029)	(1,523)	0	0
BALANCING VIRTUAL	(34,420)	(28,116)	(37,389)	(34,017)	(40,034)	(35,523)	(45,285)
	28	29	30	31			
DAM NYCA	443,969	449,325	444,384	400,341			
DAM NON-NYCA	81,756	76,503	67,469	78,987			
DAM WHEELS	4,226	3,776	1,400	1,400			
DAM VIRTUAL	47,317	35,863	35,963	38,902			
BALANCING NYCA	(6,013)	(30,502)	(15,668)	(13,110)			
BALANCING NON-NYCA	11,831	13,234	11,011	3,108			
BALANCING WHEELS	(671)	(2,811)	(350)	359			
BALANCING VIRTUAL	(47,317)	(35,863)	(35,963)	(38,902)			



SETTLEMENTS REPORT
 AUGUST 2006 SETTLEMENT ADJUSTMENT
 JANUARY 8, 2007

SETTLEMENT ADJUSTMENT MARKET SUPPLY DELTA ANALYSIS

	MONDAY	TUESDAY	WEDNESDAY	THURSDAY	FRIDAY	SATURDAY	SUNDAY
		1	2	3	4	5	6
DAM NYCA		0	0	0	0	0	0
DAM NON-NYCA		0	0	0	0	0	0
DAM WHEELS		0	0	0	0	0	0
DAM VIRTUAL		0	0	0	0	0	0
BALANCING NYCA		(105)	(340)	(181)	(86)	(21)	(21)
BALANCING NON-NYCA		0	0	(44)	0	0	0
BALANCING WHEELS		0	0	0	0	0	0
BALANCING VIRTUAL		0	0	0	0	0	0
	7	8	9	10	11	12	13
DAM NYCA	0	13	0	20	7	0	0
DAM NON-NYCA	0	0	0	0	0	0	0
DAM WHEELS	0	0	0	0	0	0	0
DAM VIRTUAL	0	0	0	0	0	0	0
BALANCING NYCA	(61)	(29)	(22)	(30)	(14)	(3)	(1)
BALANCING NON-NYCA	0	0	0	0	0	0	0
BALANCING WHEELS	0	0	0	0	0	0	0
BALANCING VIRTUAL	0	0	0	0	0	0	0
	14	15	16	17	18	19	20
DAM NYCA	12	21	22	8	0	0	0
DAM NON-NYCA	0	0	0	0	0	0	0
DAM WHEELS	0	0	0	0	0	0	0
DAM VIRTUAL	0	0	0	0	0	0	0
BALANCING NYCA	(19)	(27)	105	126	217	208	223
BALANCING NON-NYCA	0	0	0	0	0	0	0
BALANCING WHEELS	0	0	0	0	0	0	0
BALANCING VIRTUAL	0	0	0	0	0	0	0
	21	22	23	24	25	26	27
DAM NYCA	8	62	0	1	0	0	0
DAM NON-NYCA	0	0	0	0	0	0	0
DAM WHEELS	0	0	0	0	0	0	0
DAM VIRTUAL	0	0	0	0	0	0	0
BALANCING NYCA	175	196	141	102	78	(28)	201
BALANCING NON-NYCA	0	0	0	0	0	0	0
BALANCING WHEELS	0	0	0	0	0	0	0
BALANCING VIRTUAL	0	0	0	0	0	0	0
	28	29	30	31			
DAM NYCA	16	9	0	0			
DAM NON-NYCA	0	0	0	0			
DAM WHEELS	0	0	0	0			
DAM VIRTUAL	0	0	0	0			
BALANCING NYCA	213	55	(20)	6			
BALANCING NON-NYCA	0	0	0	0			
BALANCING WHEELS	0	0	0	0			
BALANCING VIRTUAL	0	0	0	0			

