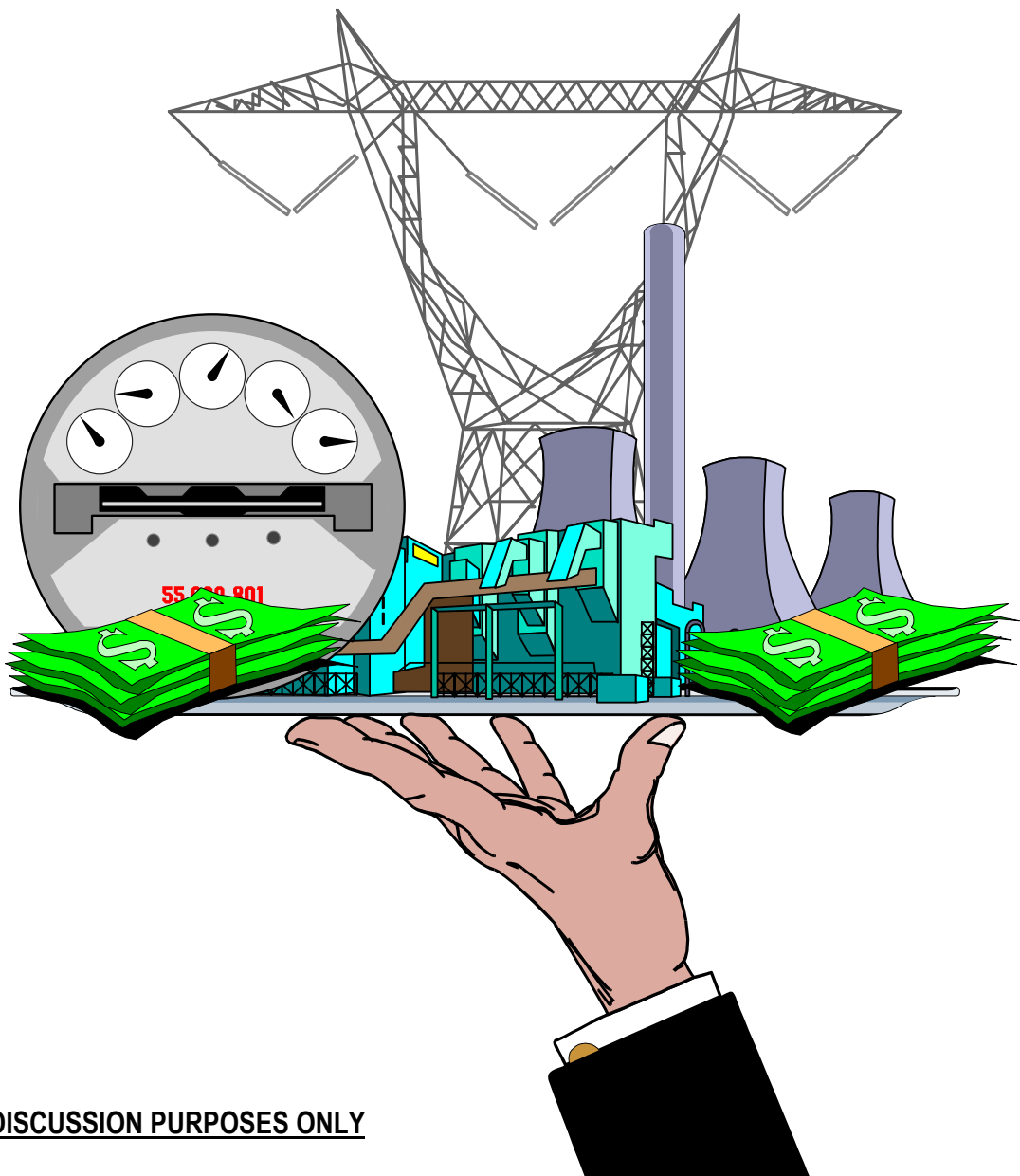


SETTLEMENTS REPORT

BILLING & ACCOUNTING WORKING GROUP

APRIL 21, 2005

RANDY A. BOWERS, MANAGER - SETTLEMENTS



APRIL 21, 2005 SETTLEMENTS REPORT

➤ Issues Affecting The Settlement Process

- Issues list revised on April 20, 2005
- Revised list posted at:
“www.nyiso.com/markets/grid_accounting/billing_issues_report/bawg_report.pdf”
- Issues Added Affecting Pre-SMD periods:
 - March 4, 2005 FERC ruling on May 8 & 9, 2000 ELR TEP
 - Group 1 TCC errors
- Issues Added Affecting Post-SMD periods:
 - February 2005 pending price corrections
 - February 2005 sub-zonal loads not profiled
 - February & March 2005 DAM Margin Preservation not paid on Regulation or Reserves

➤ Notable Regulatory Issues

- Pending filing to forgive regulation penalties for GTs for June 2003, forward
- March 4, 2005 FERC ruling on May 8 & 9, 2000 ELR TEP

➤ Invoice Schedule Status

- Revised schedule posted on April 20, 2005
- Revised Schedule: See Attachment A
- Revised schedule posted at:
“www.nyiso.com/services/documents/b-and-a/pdf/nyiso_settlement_schedule.pdf”

➤ Settlement Closeout Status

- Closeouts have been deferred until TCC issue resolved
- Revised schedule posted on April 20, 2005
- Revised Schedule: See Attachment B
- Revised schedule posted at:
“www.nyiso.com/services/documents/b-and-a/pdf/final_bill_challenge_schedule.pdf”

➤ April 7, 2005 Invoice Review

- March 2005 Market Results: See Attachment C
- March 2005 Market Residuals: See Attachment D
- November 2004 Market Results: See Attachment E
- November 2004 Market Residuals: See Attachment F
- March 2004 Market Results: See Attachment G
- March 2004 Market Residuals: See Attachment H

➤ May 6, 2005 Invoice Preview

- Interest on Working Capital to be refunded [~\$450K]
- No significant settlement impacts anticipated
- Expected to be issued on schedule

ATTACHMENT A

INVOICING SCHEDULE CHANGE

- INVOICE SCHEDULE REVISED ON APRIL 20, 2005
- POSTED AT:
- REVISION DUE TO UNRESOLVED TCC ISSUE
- PROVIDES FOR CLOSE OUT OF 12-MONTH CYCLE MONTHS IN 12/7/ 2005 INVOICE
- 24-MONTH CYCLE MONTHS ON-SCHEDULE WITH 5/5/2006 INVOICE

NYISO Invoice Schedule - Revised April 20, 2005						
Scheduled Invoice Date	Initial Settlement	Settlement Adjustments		Close-out Invoicing	Banking Dates	
		4-Month	12-Month		Due to NYISO	Due from NYISO
December 7, 2004	November 2004	July 2004	November 2003		December 16, 2004	December 20, 2004
January 10, 2005	December 2004	August 2004	December 2003		January 18, 2005	January 20, 2005
February 7, 2005	January 2005	September 2004	January 2004		February 16, 2005	February 21, 2005
March 7, 2005	February 2005	October 2004	February 2004	Suspended For 1st Month Of SMD-Based Settlement Invoicing	March 16, 2005	March 21, 2005
April 7, 2005	March 2005	November 2004	March 2004	Suspended For 2nd Month Of SMD-Based Settlement Invoicing	April 18, 2005	April 20, 2005
May 6, 2005	April 2005	December 2004	April 2004	Delayed Pending Resolution of TCC Issue	May 16, 2005	May 20, 2005
June 7, 2005	May 2005	January 2005	May 2004	March 2000, April 2000, June 2000, July 2000,	June 16, 2005	June 20, 2005
July 8, 2005	June 2005	February 2005	June 2004	August 2000, September 2000, October 2000, November 2000, December 2000,	July 18, 2005	July 20, 2005
August 5, 2005	July 2005	March 2005	July 2004	May 2000; January 2001, February 2001, March 2001, April 2001	August 16, 2005	August 22, 2005
September 8, 2005	August 2005	April 2005	August 2004	May 2001, June 2001, July 2001, August 2001, September 2001	September 16, 2005	September 20, 2005
October 7, 2005	September 2005	May 2005	September 2004	October 2001, November 2001, December 2001, January 2002, February 2002	October 17, 2005	October 20, 2005
November 7, 2005	October 2005	June 2005	October 2004	March 2002, April 2002, May 2002, June 2002; July 2002;	November 16, 2005	November 21, 2005
December 7, 2005	November 2005	July 2005	November 2004	August 2002; September 2002 ¹ ; October 2002, November 2002; December 2002;	December 16, 2005	December 20, 2005
January 9, 2006	December 2005	August 2005	December 2004	January 2003, February 2003; March 2003; April 2003; May 2003;	January 16, 2006	January 20, 2006
February 7, 2006	January 2006	September 2005	January 2005	June 2003; July 2003; August 2003; September 2003; October 2003;	February 16, 2006	February 21, 2006
March 7, 2006	February 2006	October 2005	February 2005	November 2003; December 2003; January 2004; February 2004; March 2004;	March 16, 2006	March 20, 2006
April 7, 2006	March 2006	November 2005	March 2005	April 2004, May 2004, June 2004, July 2004; August 2004	April 17, 2006	April 20, 2006
May 5, 2006	April 2006	December 2005	April 2005	September 2004, October 2004 ² ;	May 16, 2006	May 22, 2006
June 7, 2006	May 2006	January 2006	May 2005	November 2004	June 16, 2006	June 20, 2006
July 10, 2006	June 2006	February 2006	June 2005	December 2004	July 17, 2006	July 20, 2006
August 7, 2006	July 2006	March 2006	July 2005	January 2005	August 16, 2006	August 21, 2006
September 8, 2006	August 2006	April 2006	August 2005	February 2005	September 18, 2006	September 20, 2006
October 6, 2006	September 2006	May 2006	September 2005	March 2005	October 16, 2006	October 20, 2006
November 7, 2006	October 2006	June 2006	October 2005	April 2005	November 16, 2006	November 20, 2006
December 7, 2006	November 2006	July 2006	November 2005	May 2005	December 18, 2006	December 20, 2006

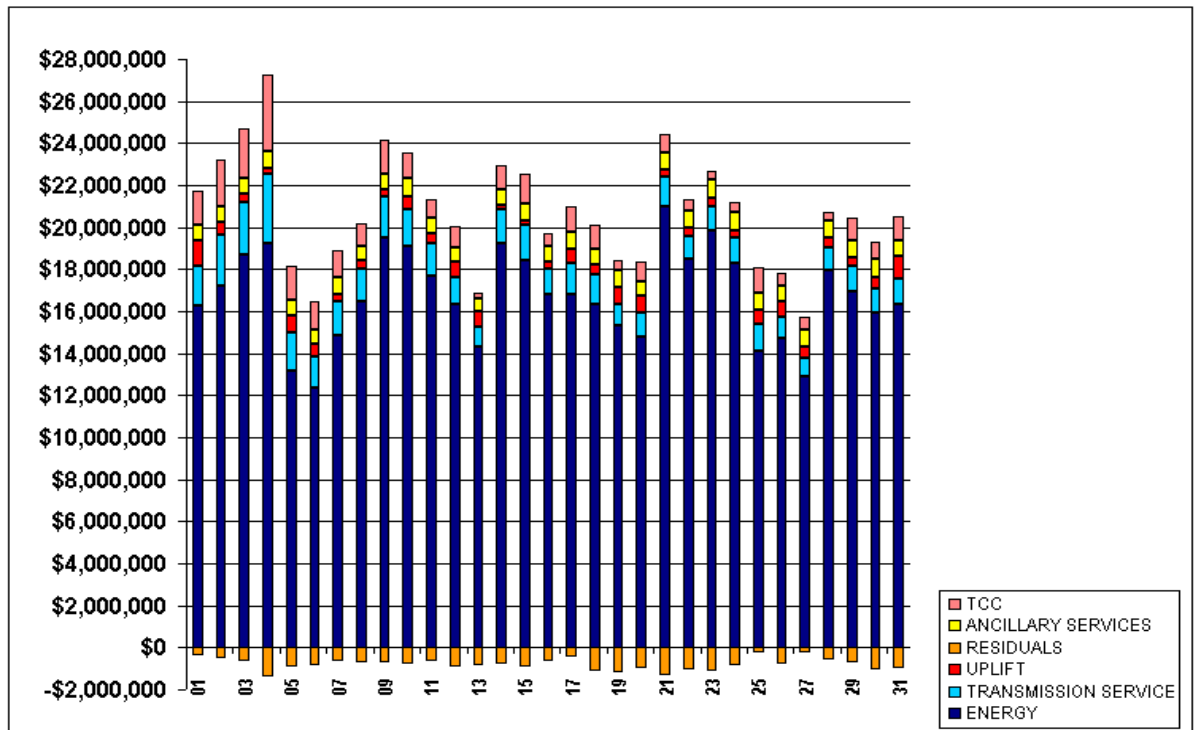
ATTACHMENT B: CLOSEOUT SCHEDULE CHANGE

- CLOSEOUT SCHEDULE REVISED ON APRIL 20, 2005
- POSTED AT:
- REVISION DUE TO UNRESOLVED TCC ISSUE
- PROVIDES FOR CLOSE OUT OF 12-MONTH CYCLE MONTHS IN 12/7/ 2005 INVOICE
- 24-MONTH CYCLE MONTHS ON-SCHEDULE WITH 5/5/2006 INVOICE

24-MONTH CYCLE SETTLEMENT MONTHS					12-MONTH CYCLE SETTLEMENT MONTHS			
Settlement Month	Final Settlement Adjustment Invoice Date	12 Month Challenge Cut-off	Posting Date for 30-day MP review of FBC disposition	Invoice Date for FBC disposition	Settlement Month	4 Month Challenge Cut-off	Posting Date for 30-day MP review of FBC disposition	Invoice Date for FBC disposition
November-99	December 11, 2001	December 11, 2003	April 7, 2004	May 7, 2004				
December-99	January 11, 2002	January 13, 2003	April 7, 2004	May 7, 2004				
January-00	February 7, 2002	February 7, 2003	April 7, 2004	May 7, 2004				
February-00	March 7, 2002	March 7, 2003	April 7, 2004	May 7, 2004				
March-00	April 10, 2002	April 10, 2003	January 7, 2005	June 7, 2005				
April-00	May 10, 2002	May 10, 2003	January 7, 2005	June 7, 2005				
May-00	June 10, 2002	June 10, 2003	July 1, 2005	August 5, 2005				
June-00	July 9, 2002	July 9, 2003	January 7, 2005	June 7, 2005				
July-00	August 8, 2002	August 8, 2003	January 7, 2005	June 7, 2005				
August-00	September 9, 2002	September 9, 2003	June 7, 2005	July 8, 2005				
September-00	October 10, 2002	October 10, 2003	June 7, 2005	July 8, 2005				
October-00	November 12, 2002	November 12, 2003	June 7, 2005	July 8, 2005				
November-00	December 14, 2002	December 15, 2003	June 7, 2005	July 8, 2005				
December-00	January 9, 2003	January 9, 2004	June 7, 2005	July 8, 2005				
January-01	February 10, 2003	February 10, 2004	July 1, 2005	August 5, 2005				
February-01	March 7, 2003	March 8, 2004	July 1, 2005	August 5, 2005				
March-01	April 7, 2003	April 7, 2004	July 1, 2005	August 5, 2005				
April-01	May 8, 2003	May 10, 2004	July 1, 2005	August 5, 2005				
May-01	June 10, 2003	June 10, 2004	August 8, 2005	September 8, 2005				
June-01	July 9, 2003	July 9, 2004	August 8, 2005	September 8, 2005				
July-01	August 7, 2003	August 9, 2004	August 8, 2005	September 8, 2005				
August-01	September 11, 2003	September 11, 2004	August 8, 2005	September 8, 2005				
September-01	October 8, 2003	October 8, 2004	August 8, 2005	September 8, 2005				
October-01	November 11, 2003	November 8, 2004	September 6, 2005	October 7, 2005	October-02	March 11, 2004	November 4, 2005	December 7, 2005
November-01	December 9, 2003	December 6, 2004	September 6, 2005	October 7, 2005	November-02	April 9, 2004	November 4, 2005	December 7, 2005
December-01	January 8, 2004	January 10, 2005	September 6, 2005	October 7, 2005	December-02	May 10, 2004	November 4, 2005	December 7, 2005
January-02	February 6, 2004	February 7, 2005	September 6, 2005	October 7, 2005	January-03	June 7, 2004	December 9, 2005	January 9, 2006
February-02	March 5, 2004	March 7, 2005	September 6, 2005	October 7, 2005	February-03	July 5, 2004	December 9, 2005	January 9, 2006
March-02	April 7, 2004	April 7, 2005	October 7, 2005	November 7, 2005	March-03	August 9, 2004	December 9, 2005	January 9, 2006
April-02	May 7, 2004	May 9, 2005	October 7, 2005	November 7, 2005	April-03	September 7, 2004	December 9, 2005	January 9, 2006
May-02	June 7, 2004	June 7, 2005	October 7, 2005	November 7, 2005	May-03	October 7, 2004	December 9, 2005	January 9, 2006
June-02	July 8, 2004	July 8, 2005	October 7, 2005	November 7, 2005	June-03	November 8, 2004	January 7, 2006	February 7, 2006
July-02	August 6, 2004	August 8, 2005	October 7, 2005	November 7, 2005	July-03	December 6, 2004	January 7, 2006	February 7, 2006
August-02	September 8, 2004	September 7, 2005	November 4, 2005	December 7, 2005	August-03	January 9, 2005	January 7, 2006	February 7, 2006
September-02	October 7, 2004	October 7, 2005	November 4, 2005	December 7, 2005	September-03	February 7, 2005	January 7, 2006	February 7, 2006
	November 5, 2004				October-03	March 11, 2005	January 7, 2006	February 7, 2006
	December 7, 2004				November-03	April 9, 2005	February 4, 2006	March 7, 2006
	January 10, 2005				December-03	May 10, 2005	February 4, 2006	March 7, 2006
	February 7, 2005				January-04	June 7, 2005	February 4, 2006	March 7, 2006
	March 7, 2005				February-04	July 5, 2005	February 4, 2006	March 7, 2006
	April 7, 2005				March-04	August 9, 2005	February 4, 2006	March 7, 2006
	May 6, 2005				April-04	September 7, 2005	March 7, 2006	April 7, 2006
	June 7, 2005				May-04	October 7, 2005	March 7, 2006	April 7, 2006
	July 8, 2005				June-04	November 8, 2005	March 7, 2006	April 7, 2006
	August 5, 2005				July-04	December 6, 2005	March 7, 2006	April 7, 2006
	September 8, 2005				August-04	January 9, 2006	March 7, 2006	April 7, 2006
	October 7, 2005				September-04	February 7, 2006	April 4, 2006	May 5, 2006
	November 7, 2005				October-04	March 7, 2006	April 4, 2006	May 5, 2006
	December 7, 2005				November-04	April 7, 2006	May 7, 2006	June 7, 2006
	January 9, 2006				December-04	May 5, 2006	June 9, 2006	July 10, 2006
	February 7, 2006				January-05	June 7, 2006	July 7, 2006	August 7, 2006
	March 7, 2006				February-05	July 10, 2006	August 8, 2006	September 8, 2006
	April 7, 2006				March-05	August 7, 2006	September 5, 2006	October 6, 2006
	May 8, 2006				April-05	September 8, 2006	October 7, 2006	November 7, 2006
	June 7, 2006				May-05	October 6, 2006	November 6, 2006	December 7, 2006
	July 10, 2006				June-05	November 7, 2006	December 8, 2006	January 8, 2007
	August 7, 2006				July-05	December 7, 2006	January 7, 2007	February 7, 2007
	September 8, 2006				August-05	January 8, 2007	February 4, 2007	March 7, 2007
	October 6, 2006				September-05	February 7, 2007	March 6, 2007	April 6, 2007
	November 7, 2006				October-05	March 7, 2007	April 6, 2007	May 7, 2007
	December 7, 2006				November-05	April 6, 2007	May 7, 2007	June 7, 2007
	January 7, 2007				December-05	May 7, 2007	June 8, 2007	July 9, 2007

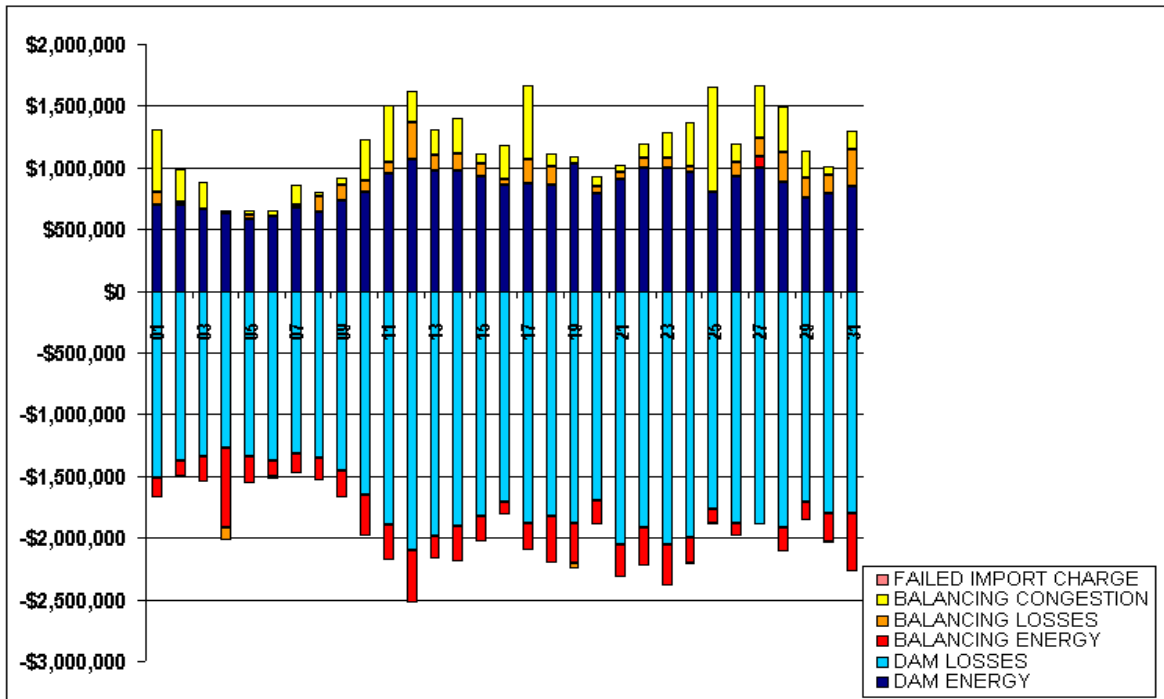
ATTACHMENT C: MARCH 2005 MARKET RESULTS

	MONDAY	TUESDAY	WEDNESDAY	THURSDAY	FRIDAY	SATURDAY	SUNDAY
		1	2	3	4	5	6
ENERGY		\$16,277,722.73	\$17,196,953.88	\$18,722,626.70	\$19,232,263.02	\$13,143,800.14	\$12,381,538.10
TRANSMISSION SERVICE		\$1,875,741.10	\$2,433,324.11	\$2,477,100.20	\$3,338,430.14	\$1,816,355.59	\$1,485,766.10
UPLIFT		\$1,250,182.45	\$594,710.68	\$399,668.88	\$269,029.82	\$865,433.25	\$574,301.10
RESIDUALS		(\$358,253.84)	(\$524,915.05)	(\$667,708.78)	(\$1,372,512.17)	(\$908,969.91)	(\$871,550.32)
ANCILLARY SERVICES		\$715,853.92	\$754,441.83	\$768,311.79	\$786,326.81	\$687,522.88	\$708,820.96
TCC		\$1,586,420.66	\$2,231,450.63	\$2,308,655.09	\$3,601,150.13	\$1,653,525.57	\$1,299,850.20
	7	8	9	10	11	12	13
ENERGY	\$14,858,276.89	\$16,501,281.44	\$19,527,598.24	\$19,070,500.86	\$17,654,038.42	\$16,321,656.74	\$14,317,711.59
TRANSMISSION SERVICE	\$1,589,125.37	\$1,518,891.21	\$1,942,596.43	\$1,796,842.10	\$1,595,312.59	\$1,289,270.53	\$958,590.08
UPLIFT	\$380,837.56	\$377,023.82	\$319,274.34	\$613,879.53	\$435,074.94	\$755,993.73	\$713,904.13
RESIDUALS	(\$620,140.34)	(\$732,234.01)	(\$748,975.14)	(\$753,353.45)	(\$669,837.95)	(\$906,149.03)	(\$869,330.85)
ANCILLARY SERVICES	\$814,549.88	\$703,681.96	\$775,934.99	\$827,008.37	\$744,057.84	\$696,779.29	\$626,814.76
TCC	\$1,256,656.44	\$1,084,969.94	\$1,598,001.07	\$1,258,682.76	\$898,817.21	\$985,225.72	\$265,937.06
	14	15	16	17	18	19	20
ENERGY	\$19,233,172.17	\$18,432,186.28	\$16,836,049.92	\$16,780,537.25	\$16,367,703.96	\$15,324,907.91	\$14,817,301.85
TRANSMISSION SERVICE	\$1,608,219.29	\$1,657,180.87	\$1,208,134.51	\$1,518,386.63	\$1,398,706.58	\$993,583.76	\$1,144,954.61
UPLIFT	\$189,906.27	\$240,487.17	\$293,120.74	\$697,680.56	\$459,263.46	\$808,975.15	\$796,999.44
RESIDUALS	(\$793,605.39)	(\$925,402.93)	(\$636,935.88)	(\$430,689.67)	(\$1,090,057.59)	(\$1,162,075.74)	(\$965,264.69)
ANCILLARY SERVICES	\$767,574.29	\$777,830.43	\$768,245.36	\$787,738.44	\$755,473.49	\$841,848.30	\$664,502.02
TCC	\$1,146,759.07	\$1,415,673.62	\$579,832.91	\$1,174,416.91	\$1,156,902.13	\$430,983.46	\$948,658.94
	21	22	23	24	25	26	27
ENERGY	\$20,966,083.91	\$18,462,397.27	\$19,868,435.16	\$18,314,157.20	\$14,097,271.60	\$14,743,078.40	\$12,866,030.97
TRANSMISSION SERVICE	\$1,423,057.87	\$1,096,268.66	\$1,122,312.11	\$1,161,622.69	\$1,292,681.90	\$1,001,514.51	\$903,357.93
UPLIFT	\$353,365.84	\$433,159.96	\$401,051.97	\$372,387.42	\$685,455.10	\$740,188.16	\$574,851.44
RESIDUALS	(\$1,297,717.20)	(\$1,036,233.67)	(\$1,106,346.04)	(\$839,743.62)	(\$233,191.29)	(\$795,761.16)	(\$230,586.80)
ANCILLARY SERVICES	\$796,006.48	\$820,794.77	\$900,442.82	\$850,981.45	\$783,789.27	\$722,380.44	\$770,403.23
TCC	\$862,056.20	\$481,144.18	\$403,994.63	\$483,007.42	\$1,220,692.58	\$622,926.02	\$613,855.65
	28	29	30	31			
ENERGY	\$17,941,372.94	\$16,964,676.56	\$15,909,123.55	\$16,329,343.22			
TRANSMISSION SERVICE	\$1,065,218.09	\$1,189,390.33	\$1,162,398.56	\$1,225,315.98			
UPLIFT	\$475,091.88	\$411,910.43	\$577,568.40	\$1,071,668.45			
RESIDUALS	(\$612,985.58)	(\$715,849.71)	(\$1,030,425.89)	(\$984,582.69)			
ANCILLARY SERVICES	\$851,983.42	\$810,946.08	\$821,092.82	\$755,815.02			
TCC	\$389,675.06	\$1,070,548.64	\$803,111.59	\$1,120,749.51			



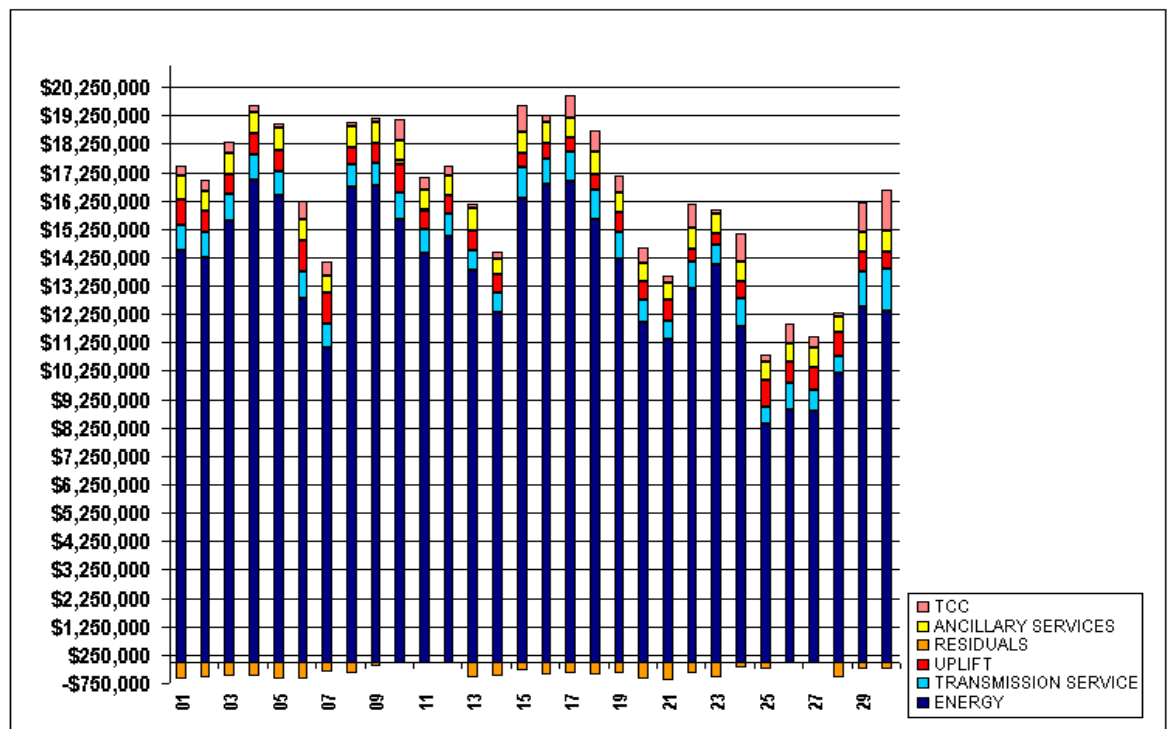
ATTACHMENT D: MARCH 2005 MARKET RESIDUALS

	MONDAY	TUESDAY	WEDNESDAY	THURSDAY	FRIDAY	SATURDAY	SUNDAY
		1	2	3	4	5	6
DAM ENERGY		\$700,194.55	\$694,896.20	\$660,419.85	\$628,719.94	\$582,939.57	\$608,970.39
DAM LOSSES		(\$1,515,165.15)	(\$1,379,892.82)	(\$1,341,814.23)	(\$1,269,697.05)	(\$1,346,233.67)	(\$1,381,109.40)
BALANCING ENERGY		(\$155,579.09)	(\$126,159.52)	(\$203,004.66)	(\$643,386.30)	(\$210,679.19)	(\$121,804.47)
BALANCING LOSSES		\$100,571.95	\$27,600.96	\$3,169.38	(\$110,378.35)	\$40,299.06	(\$24,009.06)
BALANCING CONGESTION		\$511,888.33	\$261,096.07	\$213,520.88	\$22,741.77	\$24,823.14	\$46,704.46
FAILED IMPORT CHARGE		(\$164.43)	(\$2,455.94)	\$0.00	(\$512.18)	(\$118.82)	(\$302.24)
	7	8	9	10	11	12	13
DAM ENERGY	\$669,388.43	\$644,039.05	\$737,323.39	\$802,807.25	\$954,494.77	\$1,063,651.97	\$979,479.35
DAM LOSSES	(\$1,319,248.66)	(\$1,357,838.03)	(\$1,454,394.47)	(\$1,657,092.05)	(\$1,889,824.23)	(\$2,103,629.21)	(\$1,982,115.25)
BALANCING ENERGY	(\$157,676.72)	(\$177,881.69)	(\$216,825.94)	(\$327,601.54)	(\$290,169.70)	(\$421,552.73)	(\$191,261.19)
BALANCING LOSSES	\$29,677.77	\$119,087.70	\$118,470.01	\$91,132.18	\$87,882.66	\$302,586.96	\$116,198.82
BALANCING CONGESTION	\$159,213.03	\$43,444.64	\$66,584.16	\$337,400.71	\$467,778.55	\$258,885.56	\$208,661.03
FAILED IMPORT CHARGE	(\$1,494.19)	(\$3,085.68)	(\$132.29)	\$0.00	\$0.00	(\$6,091.58)	(\$293.61)
	14	15	16	17	18	19	20
DAM ENERGY	\$970,962.78	\$931,976.66	\$857,631.28	\$873,718.91	\$863,895.83	\$1,037,394.57	\$795,158.06
DAM LOSSES	(\$1,907,691.30)	(\$1,827,125.86)	(\$1,714,394.90)	(\$1,876,765.96)	(\$1,827,573.48)	(\$1,882,656.67)	(\$1,703,474.76)
BALANCING ENERGY	(\$285,960.83)	(\$206,080.97)	(\$100,012.67)	(\$220,751.07)	(\$371,746.82)	(\$317,821.62)	(\$195,211.89)
BALANCING LOSSES	\$143,563.91	\$101,494.12	\$52,678.41	\$189,529.38	\$142,373.20	(\$45,685.64)	\$56,412.63
BALANCING CONGESTION	\$286,179.73	\$74,607.68	\$267,162.00	\$603,931.38	\$102,993.68	\$47,063.89	\$81,851.27
FAILED IMPORT CHARGE	(\$659.68)	(\$274.56)	\$0.00	(\$352.31)	\$0.00	(\$370.27)	\$0.00
	21	22	23	24	25	26	27
DAM ENERGY	\$907,442.21	\$1,001,595.42	\$999,111.93	\$961,647.35	\$797,358.15	\$930,301.22	\$993,654.79
DAM LOSSES	(\$2,059,118.71)	(\$1,916,608.73)	(\$2,059,233.70)	(\$1,993,999.55)	(\$1,764,053.38)	(\$1,882,475.07)	(\$1,897,355.32)
BALANCING ENERGY	(\$258,121.72)	(\$311,905.21)	(\$328,442.13)	(\$215,917.53)	(\$117,991.07)	(\$100,081.23)	\$100,052.90
BALANCING LOSSES	\$59,962.53	\$77,531.56	\$84,452.61	\$52,913.11	(\$10,493.22)	\$113,502.82	\$147,920.18
BALANCING CONGESTION	\$54,149.71	\$113,153.29	\$198,040.57	\$356,752.94	\$861,988.23	\$144,743.87	\$425,140.65
FAILED IMPORT CHARGE	(\$2,031.22)	\$0.00	(\$275.32)	(\$1,139.84)	\$0.00	(\$1,752.77)	\$0.00
BALANCING CONGESTION	\$0.00	\$0.00	\$0.00	\$0.00	\$0.00	\$0.00	\$0.00
	28	29	30	31			
DAM ENERGY	\$888,157.85	\$754,811.82	\$789,840.39	\$843,856.31			
DAM LOSSES	(\$1,918,806.57)	(\$1,715,300.31)	(\$1,801,522.02)	(\$1,802,713.50)			
BALANCING ENERGY	(\$192,175.62)	(\$138,496.09)	(\$235,816.22)	(\$467,722.00)			
BALANCING LOSSES	\$235,447.49	\$156,481.53	\$149,935.14	\$301,074.54			
BALANCING CONGESTION	\$375,020.37	\$226,653.34	\$71,537.33	\$148,877.66			
FAILED IMPORT CHARGE	(\$629.10)	\$0.00	(\$4,400.51)	(\$7,955.70)			



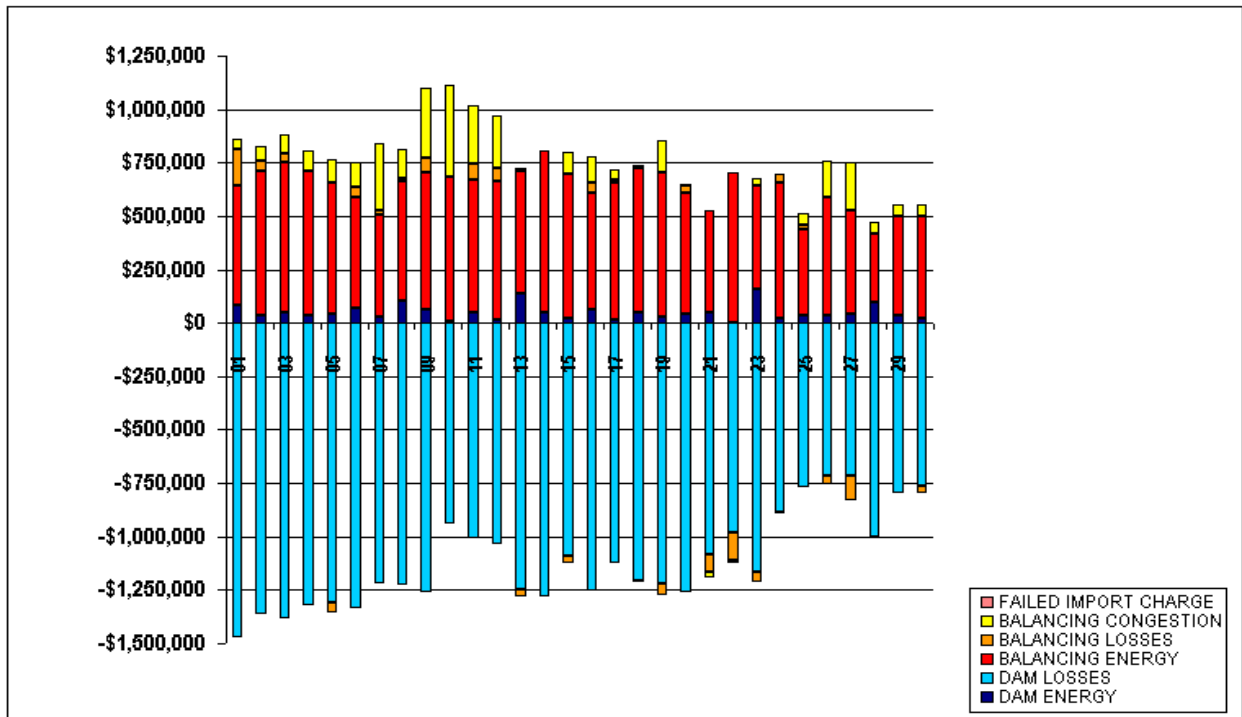
ATTACHMENT E: NOVEMBER 2004 MARKET RESULTS

	MONDAY	TUESDAY	WEDNESDAY	THURSDAY	FRIDAY	SATURDAY	SUNDAY
	1	2	3	4	5	6	7
ENERGY	\$14,491,815.61	\$14,263,315.39	\$15,559,941.06	\$16,959,447.13	\$16,428,982.50	\$12,783,634.85	\$11,073,614.60
TRANSMISSION SERVICE	\$910,559.14	\$863,884.17	\$908,635.31	\$902,547.30	\$840,557.57	\$976,508.16	\$816,197.29
UPLIFT	\$894,793.34	\$734,918.82	\$688,814.22	\$741,751.84	\$768,096.22	\$1,094,446.26	\$1,100,081.82
RESIDUALS	(\$608,477.35)	(\$535,071.08)	(\$507,101.83)	(\$512,068.52)	(\$592,704.36)	(\$587,479.40)	(\$375,105.46)
ANCILLARY SERVICES	\$807,495.99	\$742,140.21	\$741,822.49	\$750,086.07	\$798,507.03	\$723,294.64	\$591,534.65
TCC	\$366,031.00	\$360,302.35	\$407,360.45	\$264,521.78	\$114,287.86	\$661,947.65	\$516,931.11
	8	9	10	11	12	13	14
ENERGY	\$16,723,667.70	\$16,771,069.71	\$15,588,674.49	\$14,408,584.43	\$14,981,269.79	\$13,778,463.11	\$12,305,470.11
TRANSMISSION SERVICE	\$803,479.18	\$822,005.12	\$951,290.18	\$837,733.79	\$805,944.23	\$703,464.48	\$695,860.81
UPLIFT	\$614,165.16	\$699,533.44	\$969,006.34	\$657,137.09	\$641,636.13	\$725,126.80	\$624,568.51
RESIDUALS	(\$409,952.74)	(\$160,766.66)	\$175,414.16	\$12,773.26	(\$62,523.21)	(\$560,849.02)	(\$477,570.81)
ANCILLARY SERVICES	\$740,708.93	\$712,286.29	\$687,425.74	\$736,958.06	\$712,757.20	\$797,882.32	\$593,171.98
TCC	\$114,019.59	\$170,549.95	\$736,725.20	\$431,507.54	\$311,195.62	\$132,821.80	\$244,168.73
	15	16	17	18	19	20	21
ENERGY	\$16,345,718.87	\$16,848,452.34	\$16,927,176.85	\$15,581,917.49	\$14,194,950.09	\$11,966,955.63	\$11,361,267.66
TRANSMISSION SERVICE	\$1,081,906.41	\$854,814.81	\$1,025,092.98	\$1,028,820.38	\$922,608.43	\$782,763.18	\$649,441.99
UPLIFT	\$494,196.75	\$574,817.66	\$522,530.07	\$579,223.58	\$704,062.93	\$643,711.75	\$763,581.95
RESIDUALS	(\$321,693.85)	(\$470,910.20)	(\$408,631.58)	(\$475,375.94)	(\$417,987.71)	(\$607,934.80)	(\$671,273.77)
ANCILLARY SERVICES	\$736,042.79	\$730,031.53	\$698,178.79	\$760,637.62	\$687,984.43	\$679,101.09	\$568,804.91
TCC	\$963,272.32	\$270,980.49	\$802,299.40	\$761,116.73	\$604,719.62	\$528,269.22	\$261,512.60
	22	23	24	25	26	27	28
ENERGY	\$13,166,021.87	\$13,986,824.90	\$11,823,539.90	\$8,378,381.86	\$8,906,494.32	\$8,835,687.77	\$10,154,999.32
TRANSMISSION SERVICE	\$909,599.80	\$730,237.78	\$1,001,740.60	\$587,276.59	\$904,715.10	\$721,946.01	\$594,795.01
UPLIFT	\$462,574.51	\$397,155.87	\$571,412.40	\$940,133.76	\$746,331.58	\$810,172.51	\$860,380.72
RESIDUALS	(\$419,873.89)	(\$541,776.22)	(\$198,267.43)	(\$256,791.04)	(\$445.01)	(\$76,580.08)	(\$527,472.86)
ANCILLARY SERVICES	\$752,385.94	\$676,558.63	\$683,890.41	\$642,851.72	\$679,302.70	\$688,938.13	\$527,980.82
TCC	\$824,817.51	\$159,163.99	\$1,014,558.29	\$252,655.86	\$680,159.60	\$429,016.72	\$171,349.84
	29	30					
ENERGY	\$12,483,751.19	\$12,374,380.48					
TRANSMISSION SERVICE	\$1,271,973.82	\$1,490,093.59					
UPLIFT	\$667,730.36	\$601,761.78					
RESIDUALS	(\$240,120.80)	(\$244,090.26)					
ANCILLARY SERVICES	\$693,627.58	\$711,943.78					
TCC	\$1,053,592.00	\$1,447,082.02					



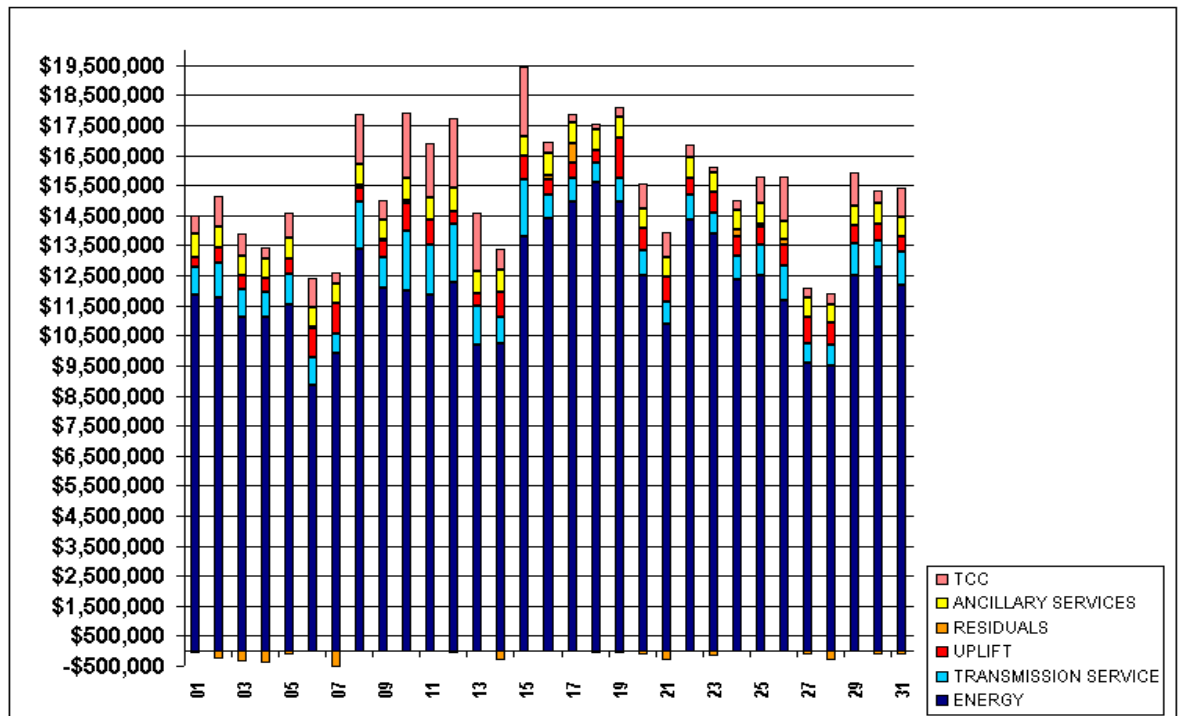
ATTACHMENT F: NOVEMBER 2004 MARKET RESIDUALS

	MONDAY	TUESDAY	WEDNESDAY	THURSDAY	FRIDAY	SATURDAY	SUNDAY
	1	2	3	4	5	6	7
DAM ENERGY	\$83,572.14	\$33,443.58	\$52,222.01	\$36,655.49	\$43,016.69	\$72,438.19	\$30,753.26
DAM LOSSES	(\$1,471,665.42)	(\$1,360,905.41)	(\$1,386,952.25)	(\$1,319,802.14)	(\$1,311,685.21)	(\$1,336,259.11)	(\$1,218,849.43)
BALANCING ENERGY	\$558,818.45	\$680,581.64	\$701,496.23	\$675,381.74	\$611,933.08	\$518,960.54	\$473,557.31
BALANCING LOSSES	\$167,559.42	\$43,263.83	\$39,150.14	\$1,197.39	(\$44,866.95)	\$46,466.94	\$24,995.91
BALANCING CONGESTION	\$53,238.06	\$68,545.28	\$86,982.04	\$94,499.00	\$108,898.03	\$110,914.04	\$314,437.49
FAILED IMPORT CHARGE	\$0.00	\$0.00	\$0.00	\$0.00	\$0.00	\$0.00	\$0.00
	8	9	10	11	12	13	14
DAM ENERGY	\$103,411.39	\$60,069.21	\$11,084.16	\$50,697.14	\$16,650.74	\$141,040.23	\$52,251.44
DAM LOSSES	(\$1,225,073.78)	(\$1,261,209.69)	(\$939,289.31)	(\$1,008,178.55)	(\$1,033,329.90)	(\$1,250,569.15)	(\$1,282,921.94)
BALANCING ENERGY	\$558,650.31	\$644,832.25	\$671,179.05	\$617,898.29	\$644,331.86	\$569,122.36	\$751,828.04
BALANCING LOSSES	\$16,380.86	\$68,585.91	\$1,516.66	\$75,047.47	\$63,978.26	(\$31,742.07)	(\$379.29)
BALANCING CONGESTION	\$136,678.48	\$326,955.66	\$430,923.60	\$277,308.91	\$245,845.83	\$11,299.61	\$1,650.94
FAILED IMPORT CHARGE	\$0.00	\$0.00	\$0.00	\$0.00	\$0.00	\$0.00	\$0.00
	15	16	17	18	19	20	21
DAM ENERGY	\$24,594.69	\$63,703.63	\$16,755.38	\$46,508.99	\$31,471.51	\$41,020.45	\$49,267.48
DAM LOSSES	(\$1,087,521.29)	(\$1,250,966.02)	(\$1,123,196.58)	(\$1,209,492.50)	(\$1,222,436.75)	(\$1,260,586.51)	(\$1,083,278.55)
BALANCING ENERGY	\$670,139.77	\$643,264.13	\$639,517.67	\$677,907.35	\$671,521.63	\$564,133.38	\$474,684.63
BALANCING LOSSES	(\$34,926.47)	\$51,308.45	\$10,420.45	\$10,714.93	(\$50,204.73)	\$34,196.32	(\$82,322.65)
BALANCING CONGESTION	\$106,019.45	\$121,779.61	\$47,871.50	(\$1,014.71)	\$151,660.63	\$13,301.56	(\$29,624.68)
FAILED IMPORT CHARGE	\$0.00	\$0.00	\$0.00	\$0.00	\$0.00	\$0.00	\$0.00
	22	23	24	25	26	27	28
DAM ENERGY	\$2,056.90	\$156,372.77	\$19,498.83	\$34,554.67	\$38,181.94	\$40,877.09	\$99,780.11
DAM LOSSES	(\$983,460.82)	(\$1,164,388.70)	(\$885,120.22)	(\$766,465.20)	(\$712,489.86)	(\$714,521.74)	(\$1,001,510.44)
BALANCING ENERGY	\$699,469.27	\$483,516.19	\$635,512.44	\$405,733.41	\$549,572.71	\$483,810.53	\$317,979.53
BALANCING LOSSES	(\$126,563.93)	(\$51,342.41)	\$39,057.04	\$17,315.87	(\$43,400.84)	(\$117,045.94)	\$832.70
BALANCING CONGESTION	(\$11,375.31)	\$34,065.93	(\$7,215.52)	\$52,070.21	\$167,691.04	\$230,299.98	\$55,445.24
FAILED IMPORT CHARGE	\$0.00	\$0.00	\$0.00	\$0.00	\$0.00	\$0.00	\$0.00
	29	30					
DAM ENERGY	\$36,072.65	\$22,633.93					
DAM LOSSES	(\$796,075.16)	(\$764,554.93)					
BALANCING ENERGY	\$460,819.73	\$479,882.41					
BALANCING LOSSES	\$1,647.77	(\$35,457.87)					
BALANCING CONGESTION	\$57,414.21	\$53,406.20					
FAILED IMPORT CHARGE	\$0.00	\$0.00					



ATTACHMENT G: MARCH 2004 MARKET RESULTS

	MONDAY	TUESDAY	WEDNESDAY	THURSDAY	FRIDAY	SATURDAY	SUNDAY
	1	2	3	4	5	6	7
ENERGY	\$11,843,621.24	\$11,752,324.69	\$11,114,905.37	\$11,122,248.04	\$11,533,725.79	\$8,844,082.86	\$9,930,307.00
TRANSMISSION SERVICE	\$918,307.89	\$1,162,786.06	\$906,111.84	\$813,640.00	\$1,016,921.07	\$941,472.26	\$619,528.72
UPLIFT	\$331,522.89	\$508,347.07	\$503,570.06	\$477,754.50	\$506,925.69	\$955,915.78	\$1,009,845.89
RESIDUALS	(\$85,670.43)	(\$272,106.00)	(\$367,006.87)	(\$390,820.99)	(\$146,397.82)	\$48,045.43	(\$524,887.35)
ANCILLARY SERVICES	\$789,547.02	\$686,309.01	\$629,353.28	\$641,470.63	\$699,929.95	\$667,705.92	\$647,027.25
TCC	\$621,371.17	\$1,015,163.80	\$714,897.26	\$361,103.18	\$828,961.58	\$935,976.39	\$388,607.84
	8	9	10	11	12	13	14
ENERGY	\$13,380,087.74	\$12,093,795.55	\$11,992,777.42	\$11,868,876.87	\$12,250,641.36	\$10,175,902.97	\$10,243,188.11
TRANSMISSION SERVICE	\$1,589,217.65	\$1,000,644.79	\$1,975,673.55	\$1,660,597.05	\$1,949,428.69	\$1,289,171.97	\$856,953.91
UPLIFT	\$457,246.17	\$568,133.84	\$963,853.59	\$809,979.52	\$431,901.27	\$438,408.84	\$868,513.44
RESIDUALS	\$63,082.51	\$44,213.18	\$51,587.12	\$22,601.14	(\$66,805.22)	(\$4,765.49)	(\$298,723.76)
ANCILLARY SERVICES	\$704,076.97	\$660,485.26	\$738,166.06	\$731,068.55	\$803,146.17	\$755,673.85	\$717,455.66
TCC	\$1,663,463.51	\$622,973.39	\$2,176,767.60	\$1,793,309.90	\$2,277,540.02	\$1,938,210.12	\$679,676.68
	15	16	17	18	19	20	21
ENERGY	\$13,793,444.11	\$14,411,608.56	\$14,949,593.48	\$15,601,804.14	\$14,960,349.69	\$12,515,691.53	\$10,876,056.74
TRANSMISSION SERVICE	\$1,903,279.18	\$769,662.67	\$796,061.11	\$668,045.88	\$770,974.55	\$817,632.82	\$764,264.42
UPLIFT	\$780,569.37	\$518,170.70	\$528,167.22	\$410,273.53	\$1,367,582.80	\$727,578.60	\$801,529.59
RESIDUALS	(\$23,749.23)	\$114,291.36	\$606,422.33	(\$99,887.09)	(\$81,602.12)	(\$118,352.93)	(\$312,307.91)
ANCILLARY SERVICES	\$662,817.47	\$763,461.07	\$700,530.80	\$683,764.21	\$656,841.90	\$678,854.31	\$683,187.57
TCC	\$2,316,894.25	\$358,749.61	\$308,523.09	\$188,865.83	\$326,829.94	\$817,057.23	\$806,214.90
	22	23	24	25	26	27	28
ENERGY	\$14,351,123.86	\$13,873,784.85	\$12,352,849.02	\$12,522,246.48	\$11,664,096.75	\$9,569,570.67	\$9,508,208.81
TRANSMISSION SERVICE	\$845,989.42	\$723,914.55	\$778,460.03	\$1,001,874.96	\$1,171,550.75	\$636,491.62	\$698,449.14
UPLIFT	\$628,368.03	\$686,964.00	\$679,746.20	\$586,336.21	\$691,324.16	\$855,542.90	\$733,579.57
RESIDUALS	\$21,916.70	(\$172,728.63)	\$215,208.05	\$111,050.18	\$167,206.05	(\$140,759.68)	(\$298,835.36)
ANCILLARY SERVICES	\$701,623.94	\$663,812.41	\$642,065.86	\$688,019.35	\$627,450.67	\$647,428.10	\$590,547.27
TCC	\$396,272.17	\$171,701.10	\$348,976.65	\$898,358.90	\$1,456,163.41	\$327,608.95	\$356,723.93
	29	30	31				
ENERGY	\$12,480,428.99	\$12,797,257.38	\$12,183,796.69				
TRANSMISSION SERVICE	\$1,105,726.71	\$844,135.37	\$1,117,419.81				
UPLIFT	\$562,453.87	\$586,502.43	\$477,761.06				
RESIDUALS	(\$58,993.58)	(\$128,444.73)	(\$143,710.03)				
ANCILLARY SERVICES	\$667,902.40	\$662,269.91	\$669,796.15				
TCC	\$1,117,010.13	\$430,910.34	\$972,797.72				



ATTACHMENT H: MARCH 2004 MARKET RESIDUALS

	MONDAY	TUESDAY	WEDNESDAY	THURSDAY	FRIDAY	SATURDAY	SUNDAY
	1	2	3	4	5	6	7
DAM ENERGY	(\$2,406.35)	\$8,425.14	\$8,061.80	\$17,961.36	\$10,639.49	(\$137.82)	\$5,967.24
DAM LOSSES	(\$872,329.67)	(\$797,302.81)	(\$924,570.29)	(\$1,008,071.55)	(\$1,014,690.62)	(\$886,360.46)	(\$862,885.30)
BALANCING ENERGY	\$458,317.68	\$426,022.17	\$342,719.00	\$331,042.01	\$293,715.59	\$310,662.34	\$198,283.66
BALANCING LOSSES	(\$8,850.52)	(\$23,359.60)	\$82,242.42	\$103,141.51	\$113,501.57	\$256,513.76	\$46,439.74
BALANCING CONGESTION	\$339,598.43	\$114,109.10	\$124,540.20	\$165,105.68	\$450,436.15	\$367,367.61	\$87,307.31
FAILED IMPORT CHARGE	\$0.00	\$0.00	\$0.00	\$0.00	\$0.00	\$0.00	\$0.00
	8	9	10	11	12	13	14
DAM ENERGY	(\$3,349.74)	\$197.37	(\$4,956.39)	(\$1,355.65)	\$381.27	\$348.02	\$36,303.57
DAM LOSSES	(\$708,733.52)	(\$897,138.76)	(\$921,424.96)	(\$856,547.55)	(\$755,523.67)	(\$745,841.77)	(\$768,289.53)
BALANCING ENERGY	\$458,990.55	\$375,005.14	\$484,333.32	\$438,090.23	\$371,154.03	\$374,590.63	\$130,960.48
BALANCING LOSSES	\$26,643.80	\$91,627.47	\$128,532.34	\$118,601.44	\$92,909.75	\$220,748.88	\$177,419.23
BALANCING CONGESTION	\$289,531.42	\$474,521.96	\$365,102.81	\$323,812.67	\$224,273.40	\$145,398.75	\$124,882.49
FAILED IMPORT CHARGE	\$0.00	\$0.00	\$0.00	\$0.00	\$0.00	\$0.00	\$0.00
	15	16	17	18	19	20	21
DAM ENERGY	(\$988.04)	\$3,649.83	(\$2,674.91)	\$10,657.19	\$55,665.45	\$11,256.03	\$14,298.54
DAM LOSSES	(\$728,151.11)	(\$779,553.71)	(\$893,919.56)	(\$778,002.49)	(\$752,852.02)	(\$681,329.83)	(\$644,758.71)
BALANCING ENERGY	\$360,372.33	\$457,978.81	\$403,789.59	\$302,882.88	\$275,410.36	\$323,720.25	\$274,605.40
BALANCING LOSSES	\$144,826.22	\$132,619.07	\$147,286.51	\$96,741.84	\$40,336.54	(\$13,436.17)	(\$28,186.74)
BALANCING CONGESTION	\$200,192.37	\$299,597.36	\$951,941.70	\$267,833.49	\$299,838.55	\$241,435.79	\$71,733.60
FAILED IMPORT CHARGE	\$0.00	\$0.00	\$0.00	\$0.00	\$0.00	\$0.00	\$0.00
	22	23	24	25	26	27	28
DAM ENERGY	\$18,667.88	\$31,835.10	\$16,385.67	\$12,382.09	\$20,472.15	\$20,933.27	\$16,864.11
DAM LOSSES	(\$814,657.70)	(\$852,577.41)	(\$805,055.26)	(\$896,967.17)	(\$778,196.50)	(\$984,205.11)	(\$820,986.19)
BALANCING ENERGY	\$487,046.27	\$277,574.10	\$371,772.34	\$443,526.61	\$366,430.93	\$212,543.49	\$215,694.92
BALANCING LOSSES	\$24,935.91	\$43,612.54	(\$11,840.87)	\$43,371.92	\$44,745.31	\$96,581.47	\$33,482.01
BALANCING CONGESTION	\$305,924.34	\$326,827.04	\$643,946.17	\$508,736.73	\$513,754.16	\$513,387.20	\$256,109.79
FAILED IMPORT CHARGE	\$0.00	\$0.00	\$0.00	\$0.00	\$0.00	\$0.00	\$0.00
	29	30	31				
DAM ENERGY	\$11,092.60	\$31,025.96	\$18,843.38				
DAM LOSSES	(\$863,089.27)	(\$927,022.66)	(\$983,643.47)				
BALANCING ENERGY	\$376,488.83	\$426,573.32	\$433,708.24				
BALANCING LOSSES	\$20,845.89	\$59,580.93	\$82,783.23				
BALANCING CONGESTION	\$395,668.37	\$281,397.72	\$304,598.59				
FAILED IMPORT CHARGE	\$0.00	\$0.00	\$0.00				

