

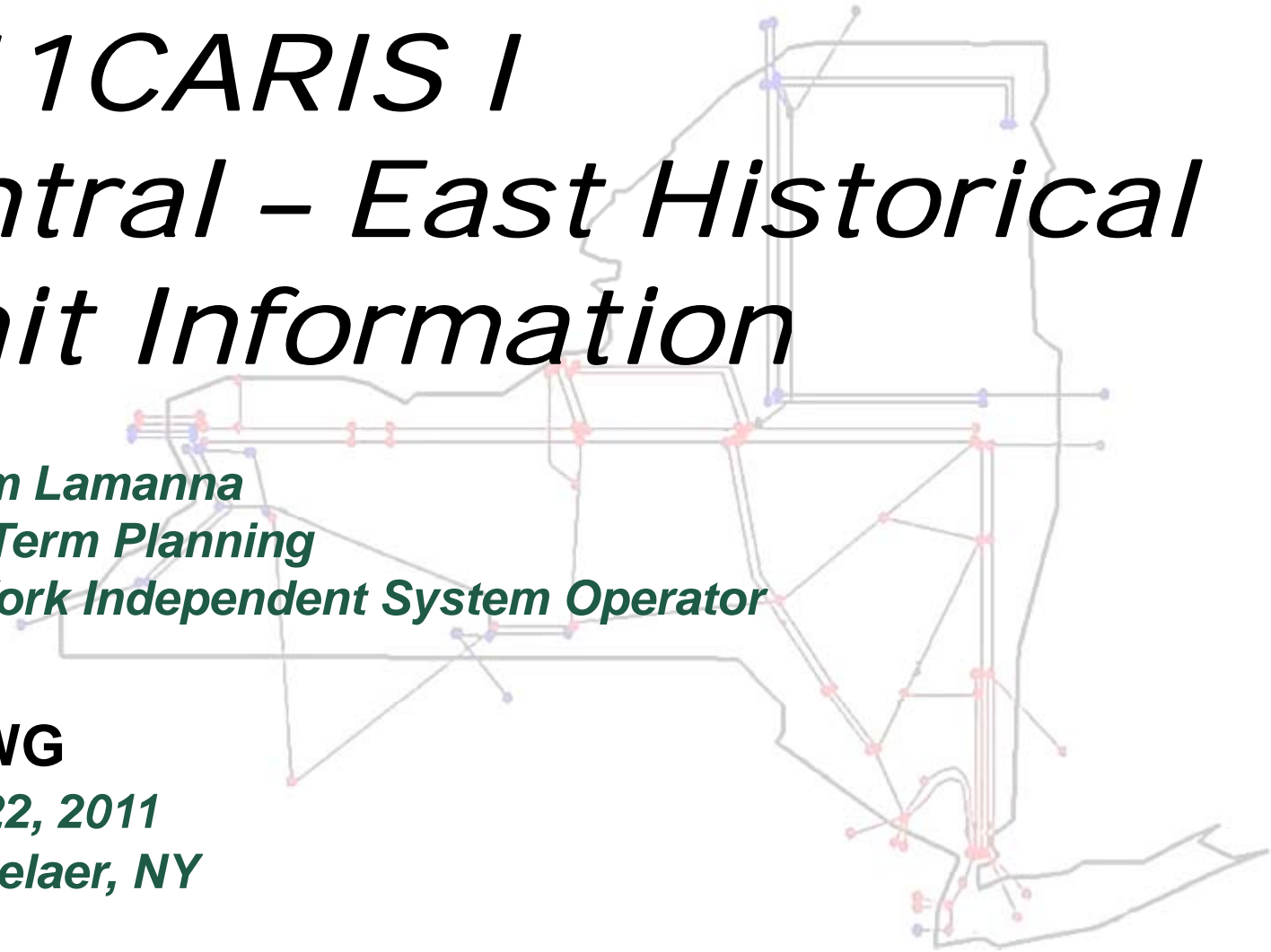
2011 CARIS I Central - East Historical Limit Information

*William Lamanna
Long Term Planning
New York Independent System Operator*

ESPWG

June 22, 2011

Rensselaer, NY



CENTRAL-EAST AVG. TTC

- ◆ **Average Yearly TTC (MW)**
- ◆ **2010 2407**
- ◆ **2009 2402**
- ◆ **2008 2408**
- ◆ **2007 2494**
- ◆ **2006 2558**

2010 AVR Outages in Oswego Area

- ◆ **Quarter One: 21 days**
- ◆ **Quarter Four: 28 days**

Central – East Transfer Limit

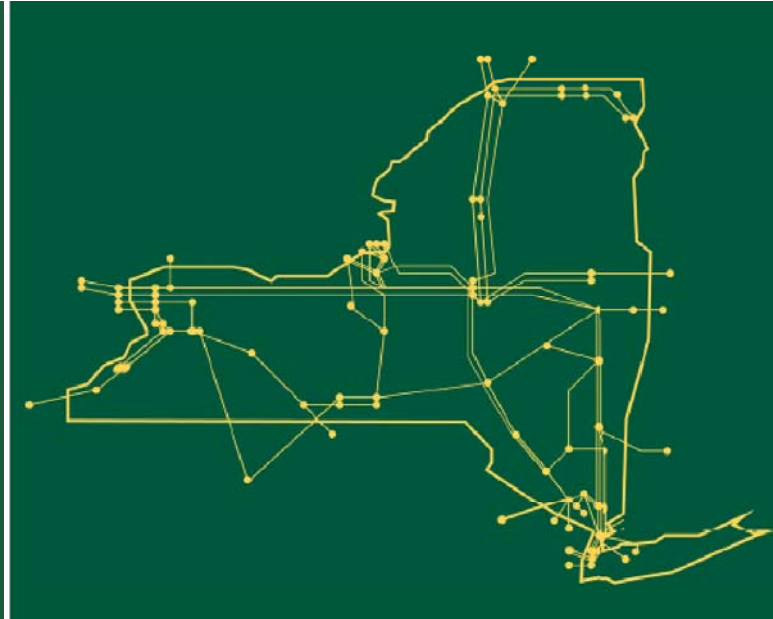
This slide was presented at June 8 meeting and is being updated as requested to show effect of Oswego Area AVR outages on the results below.

- ◆ **Statistical Comparison of Day Ahead Central East VC and MAPs limit**

	CEVC Limit - Variation	MAPS CE
Avg	2,306	
Median	2,340	
Std Dev	263.35	
Avg when Limiting	2,192	2,108

- ◆ **Discounting those hours without Oswego Area AVRs in service during 2010, “Avg When Limiting” is 2218.**
- ◆ **MAPS limit is close to SCUC limits over the year and has given reasonable results on zonal generation**

The New York Independent System Operator (NYISO) is a not-for-profit corporation responsible for operating the state's bulk electricity grid, administering New York's competitive wholesale electricity markets, conducting comprehensive long-term planning for the state's electric power system, and advancing the technological infrastructure of the electric system serving the Empire State.



www.nyiso.com