

Operations Performance Metrics Monthly Report



May 2011 Report

Operations & Reliability Department New York Independent System Operator

Prepared by NYISO Operations Analysis and Services, based on settlements initial process data.

Table of Contents

- ◆ **Highlights**
 - *Operations Performance*

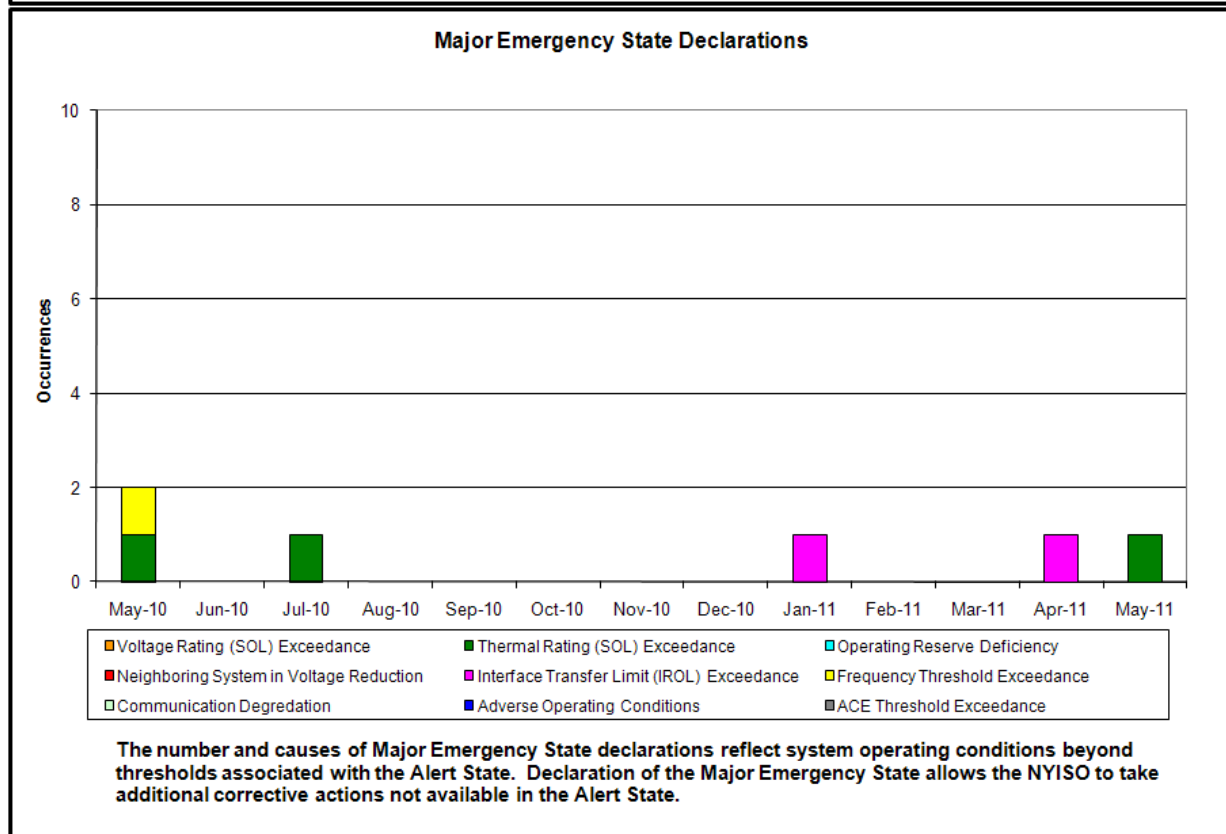
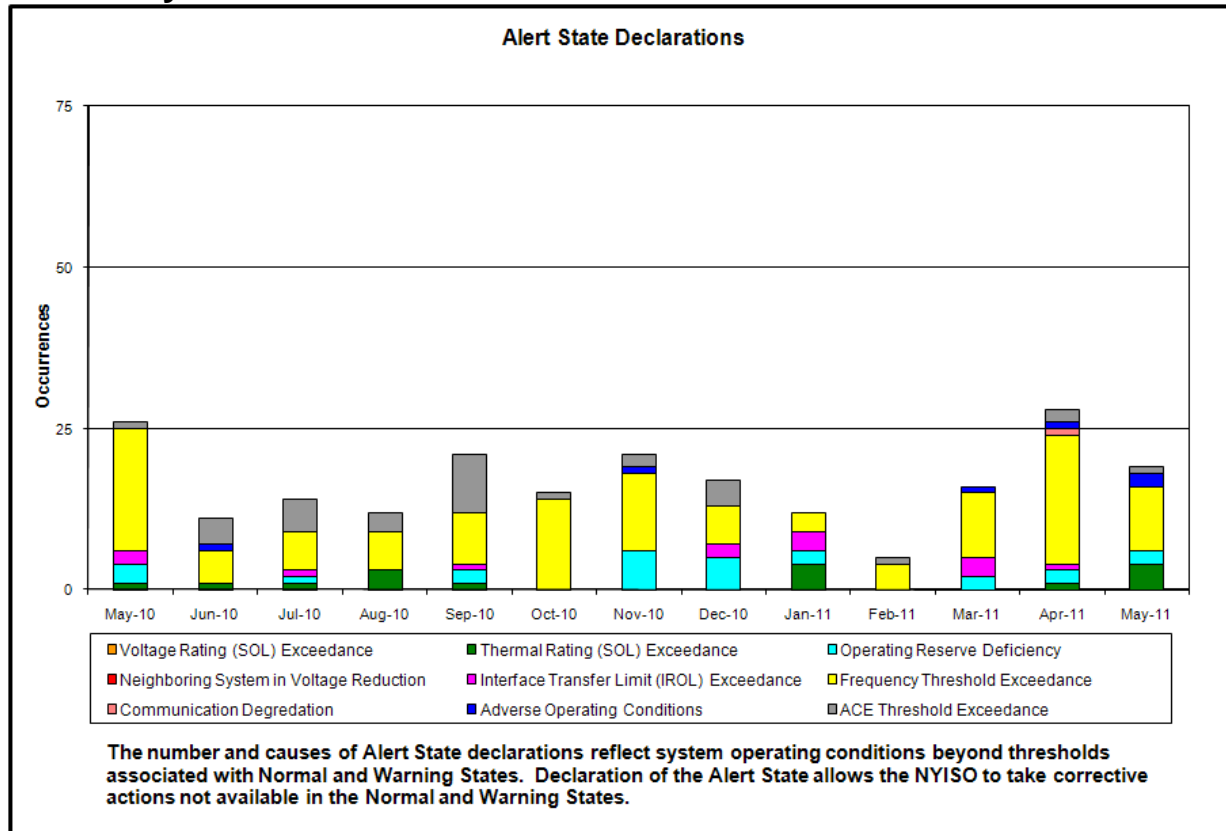
- ◆ **Reliability Performance Metrics**
 - *Alert State Declarations*
 - *Major Emergency State Declarations*
 - *IROL Exceedance Times*
 - *Balancing Area Control Performance*
 - *Reserve Activations*
 - *Disturbance Recovery Times*
 - *Load Forecasting Performance*
 - *Wind Forecasting Performance*
 - *Lake Erie Circulation and ISO Schedules*

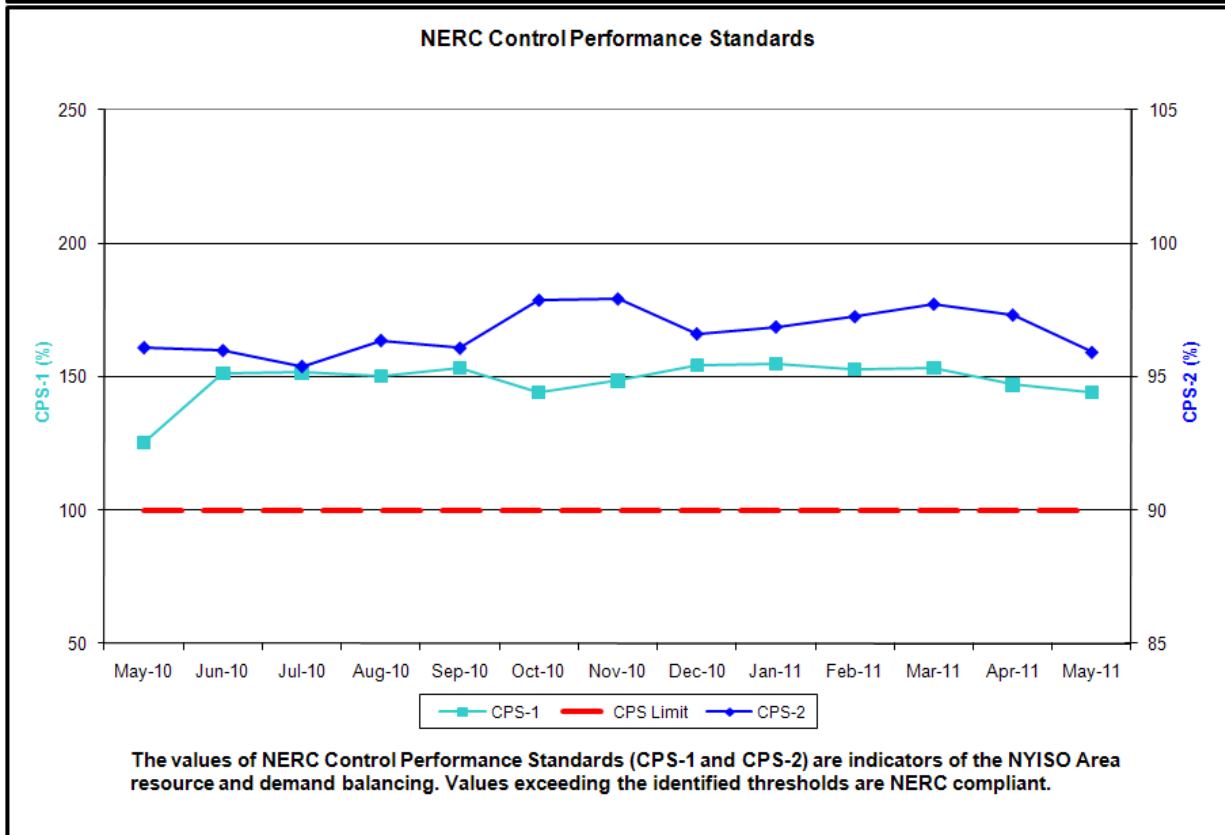
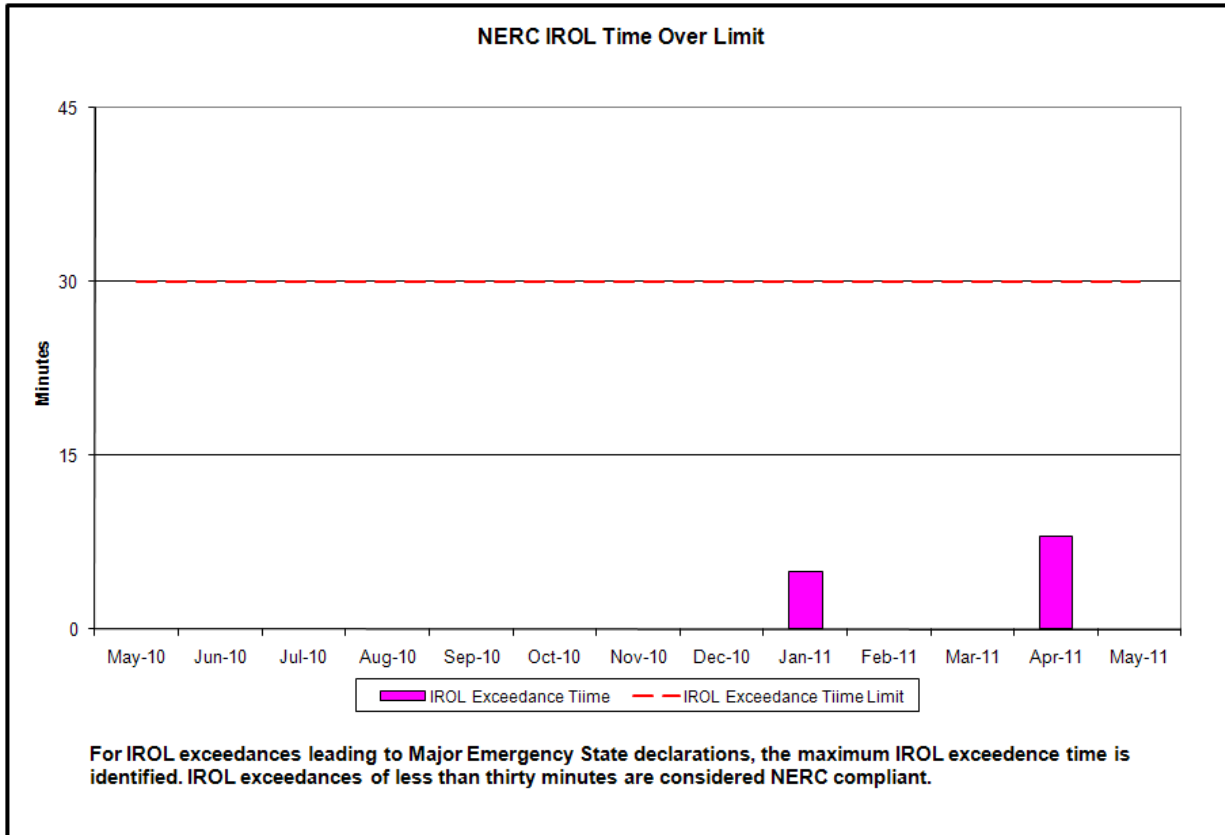
- ◆ **Market Performance Metrics**
 - *RTM Congestion Residuals Monthly Trend*
 - *RTM Congestion Residuals Daily Costs*
 - *RTM Congestion Residuals Event Summary*
 - *RTM Congestion Residuals Cost Categories*
 - *DAM Congestion Residuals Monthly Trend*
 - *DAM Congestion Residuals Daily Costs*
 - *DAM Congestion Residuals Cost Categories*
 - *NYCA Unit Uplift Components Monthly Trend*
 - *NYCA Unit Uplift Components Daily Costs*
 - *ICAP Spot Market Clearing Price*
 - *UCAP Awards*

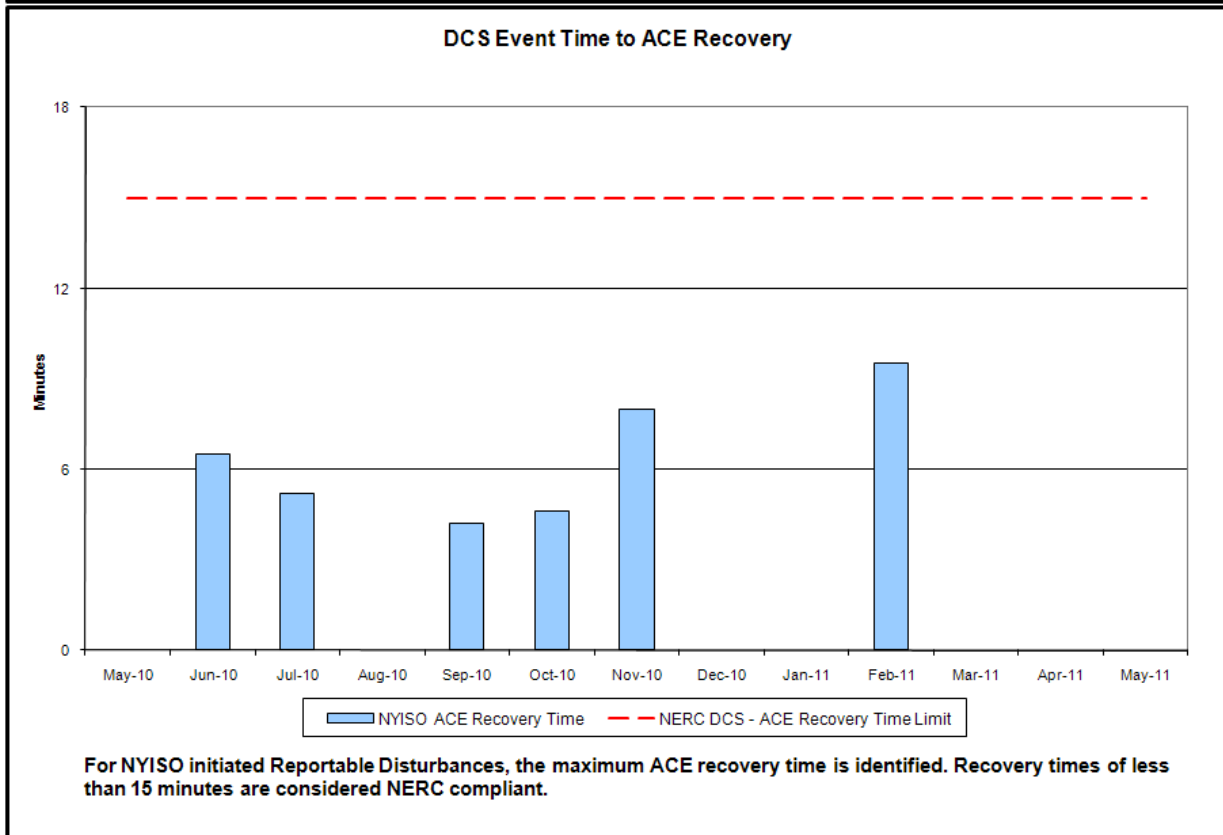
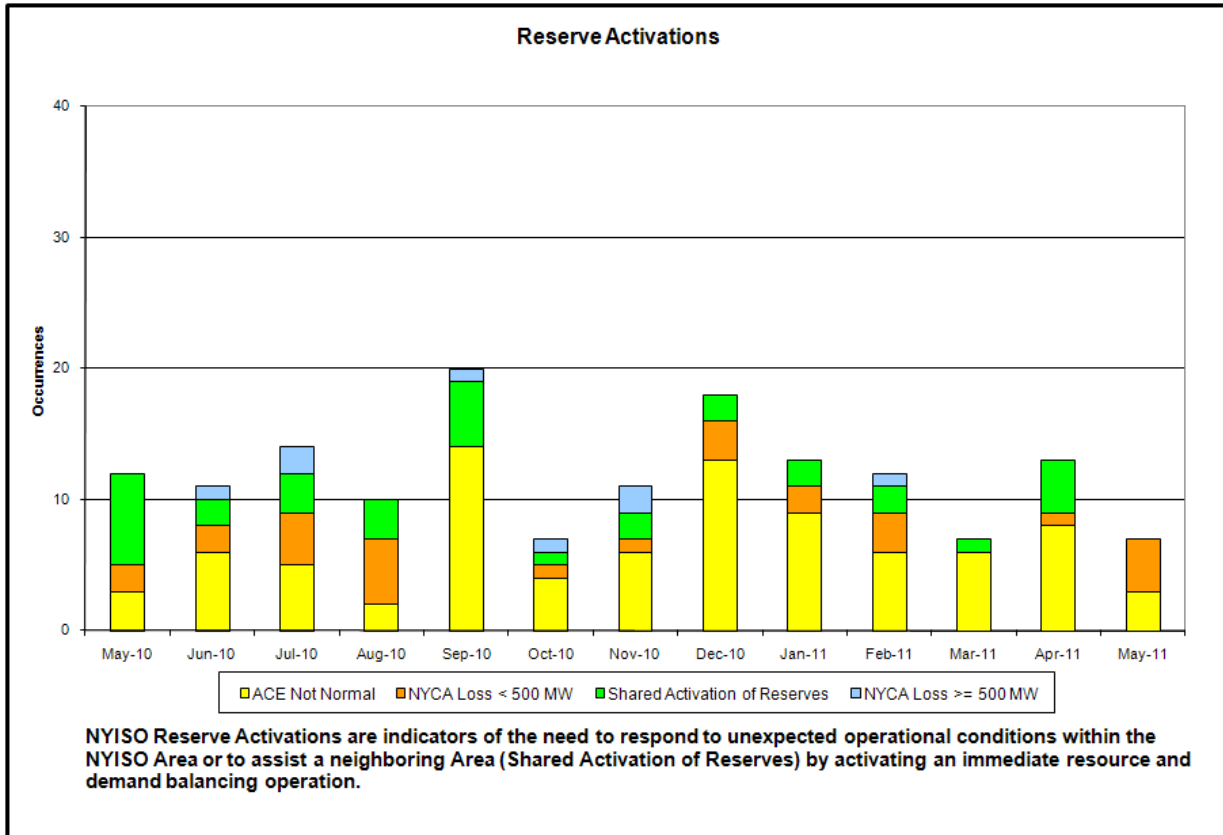
May 2011 Operations Performance Highlights

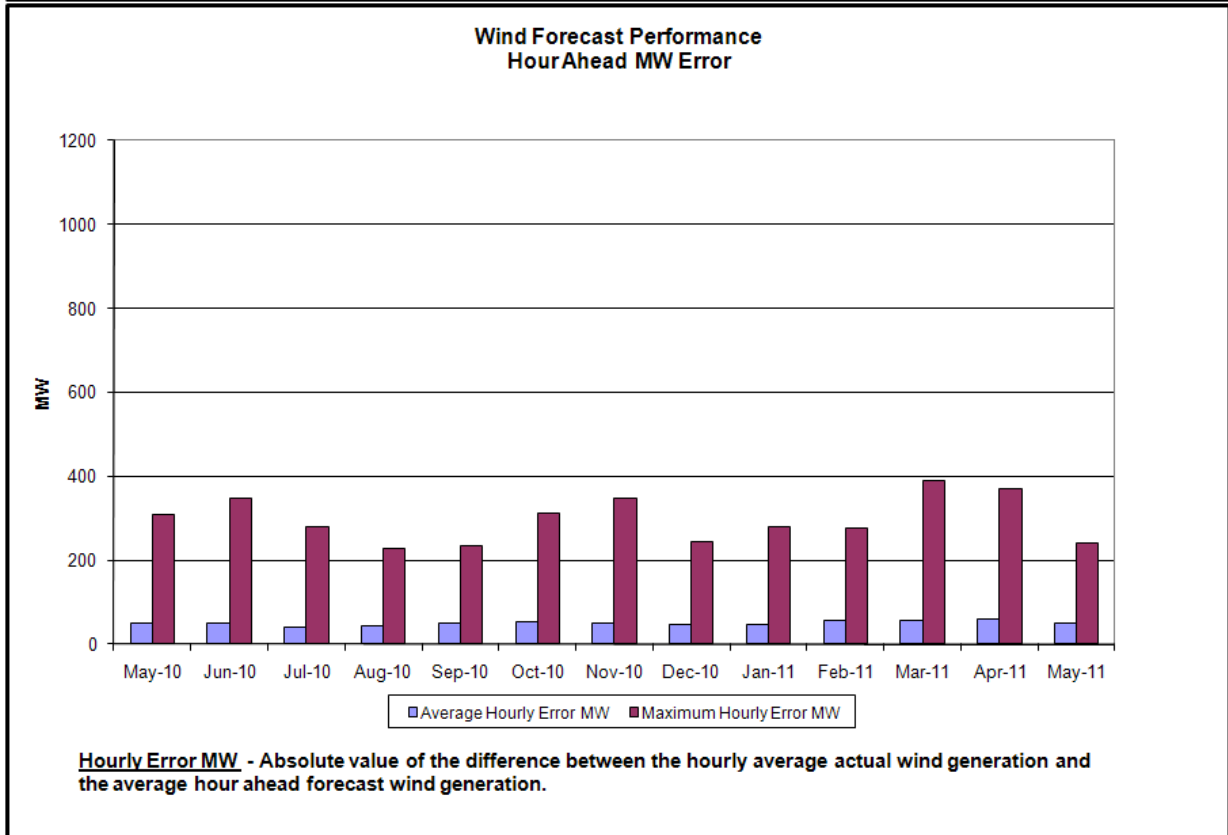
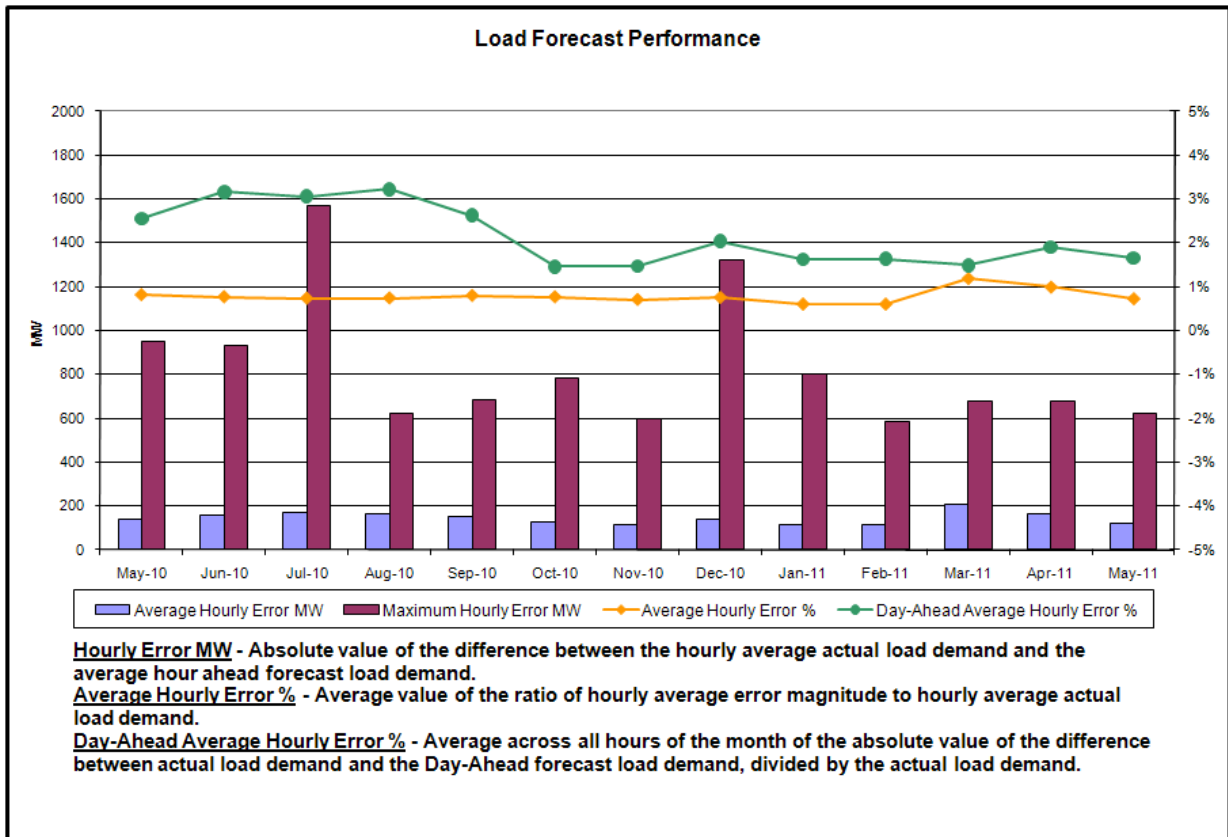
- Peak load of 27,738 MW occurred on 5/31/2011 HB16
- All-time summer capability period peak load of 33,939 MW occurred on 8/2/2006 HB13
- **Continued levels of Clockwise Lake Erie Loop Flows**
 - Increased IESO to MISO exports
 - Decreased PJM to MISO exports
 - 128 hours of NERC TLR level 3 curtailments
- **Daily Uplift Monitoring / Review Process**
 - Low levels of transmission congestion related uplift costs
 - Decreased supplier related uplift costs

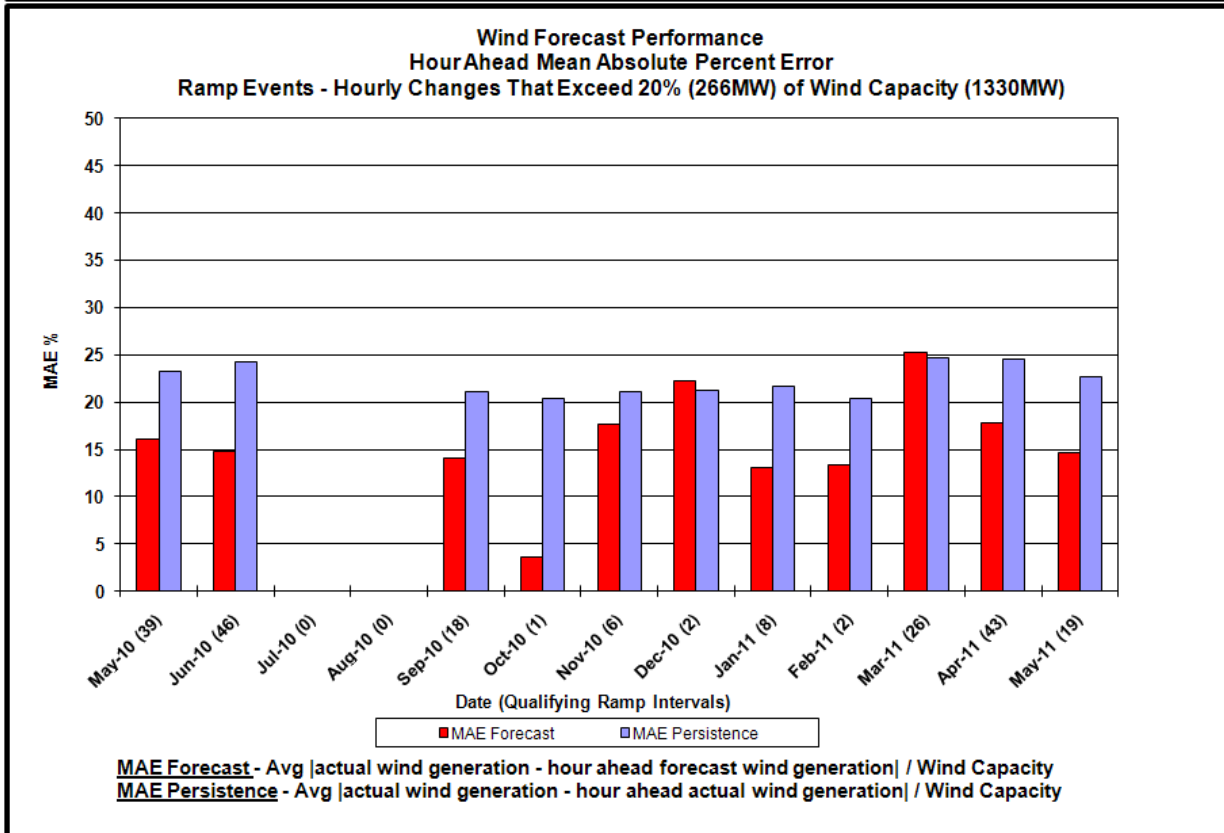
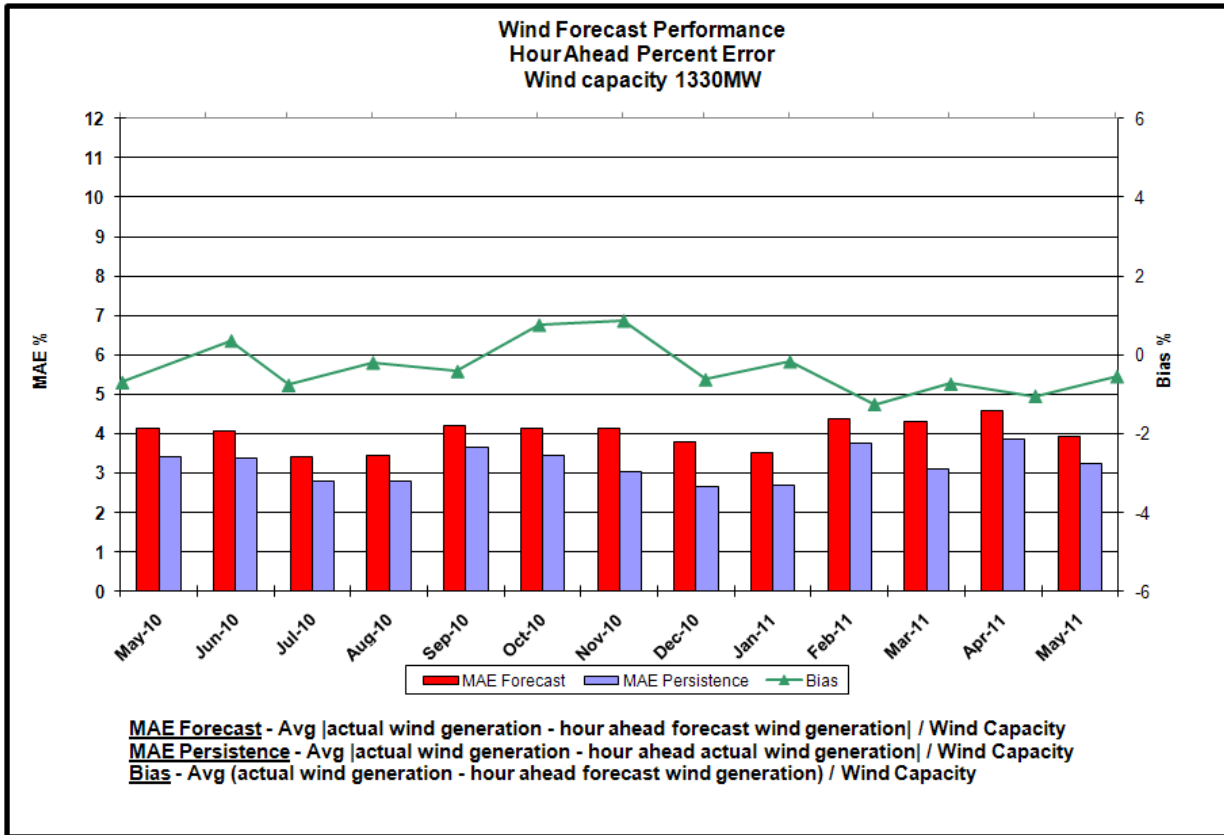
Reliability Performance Metrics

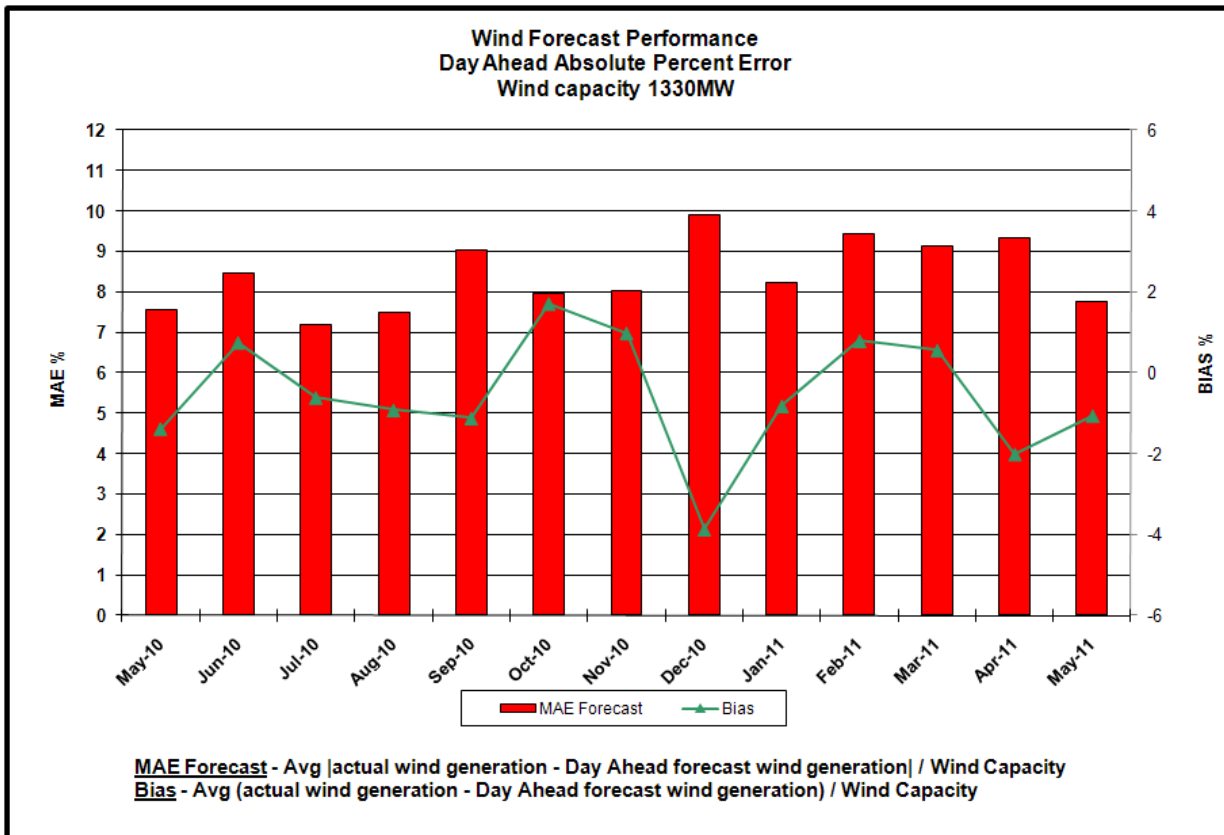


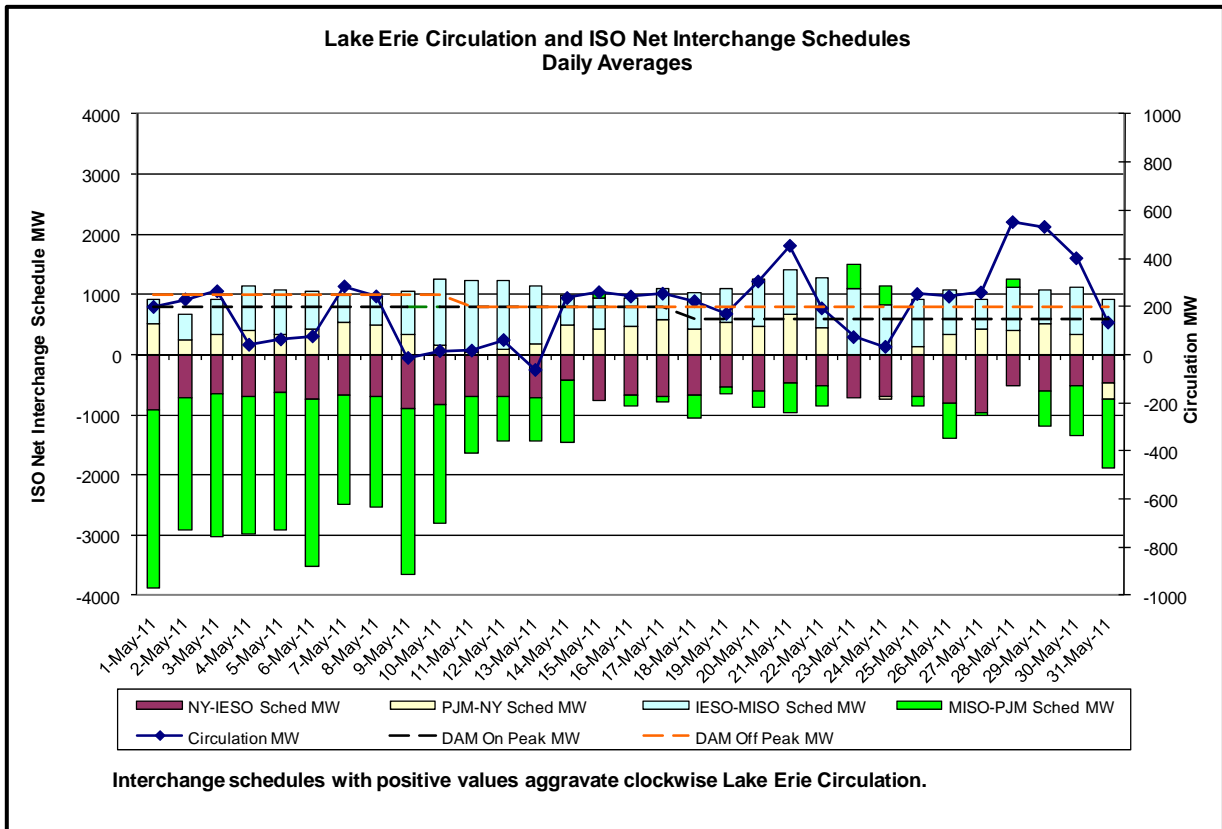
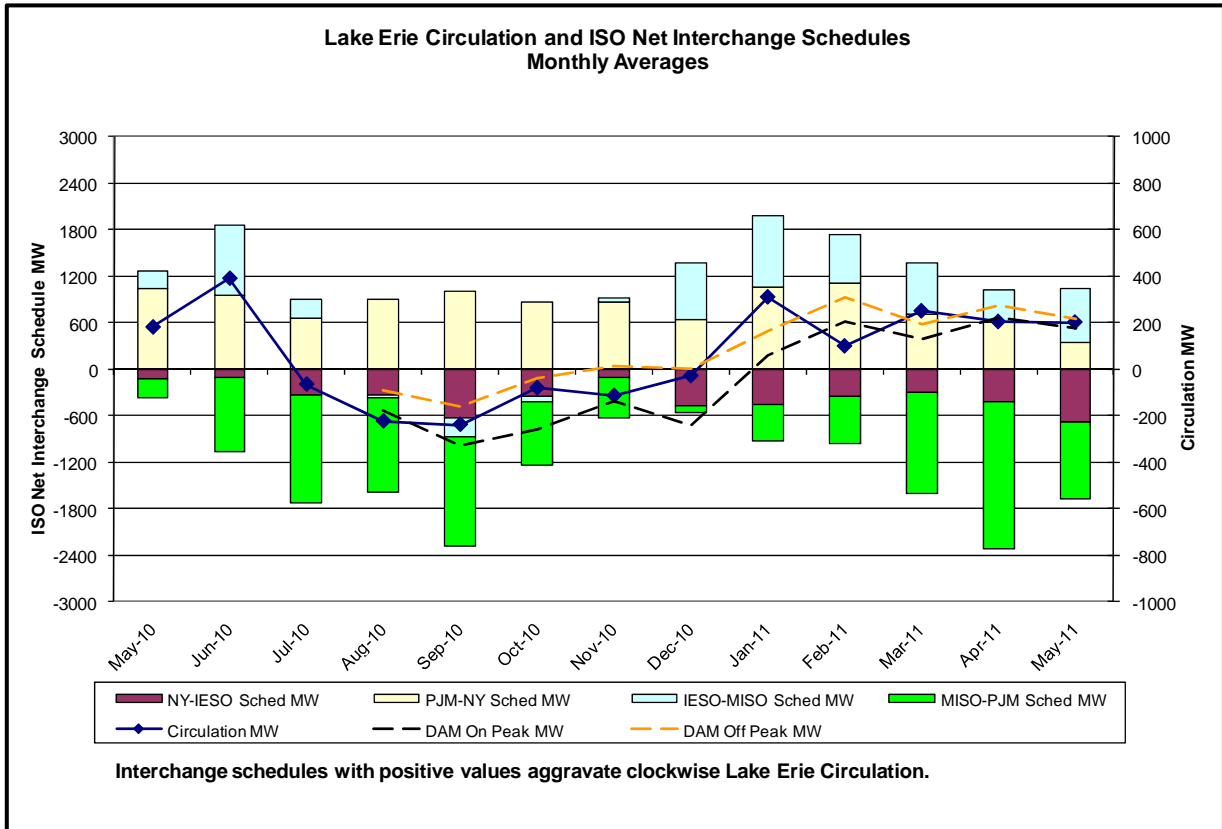




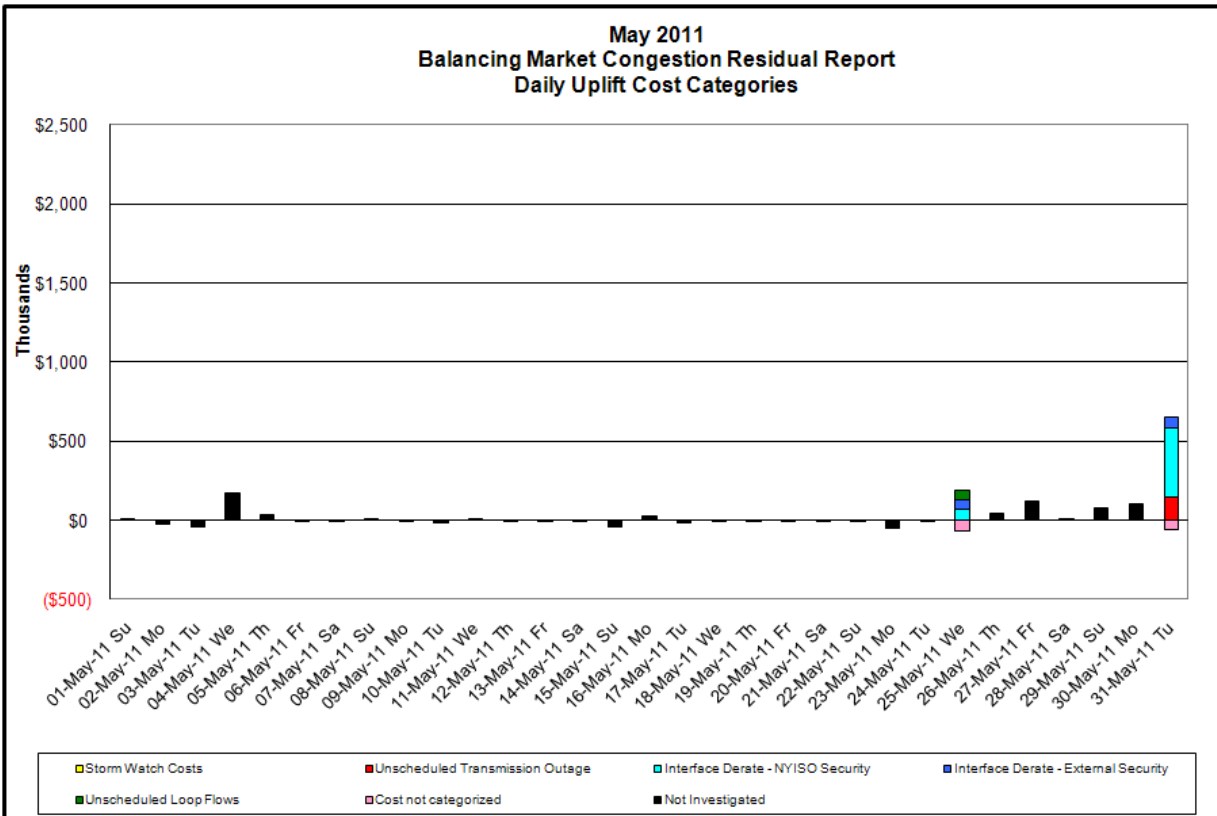
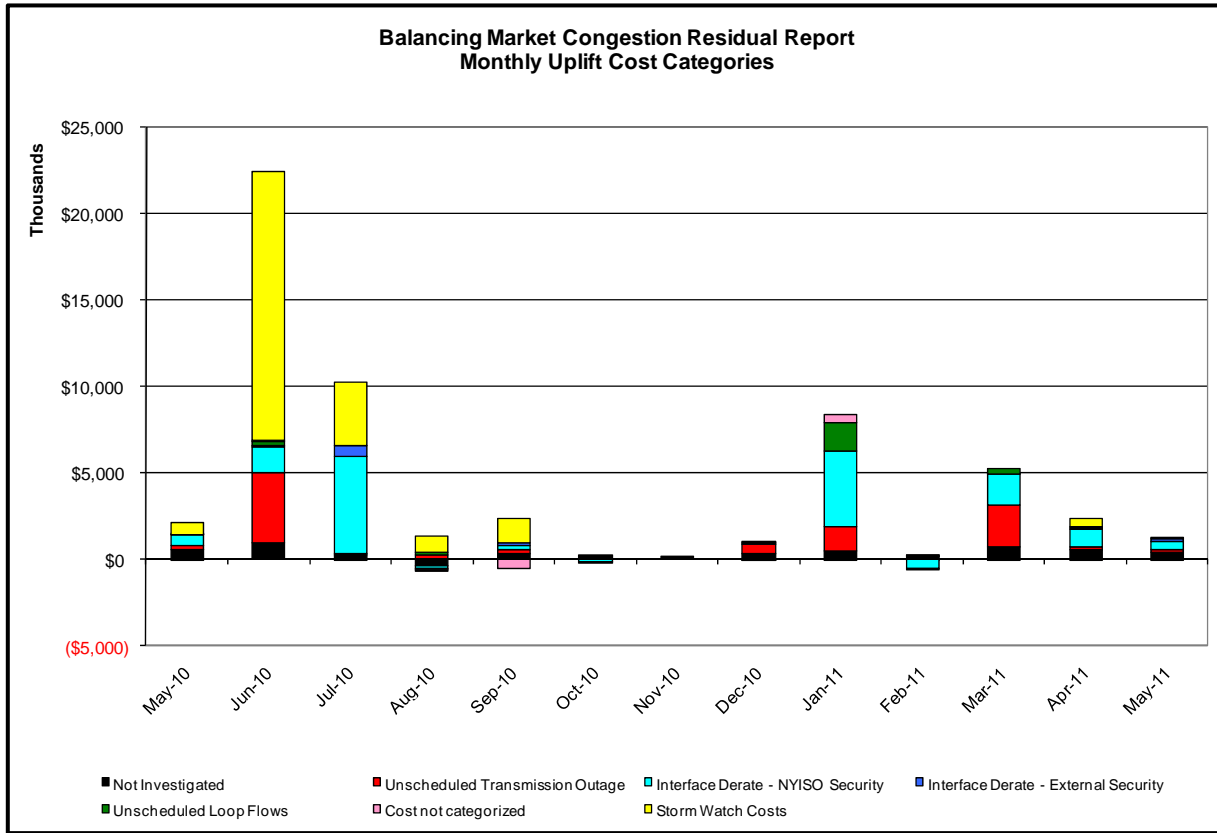








Market Performance Metrics



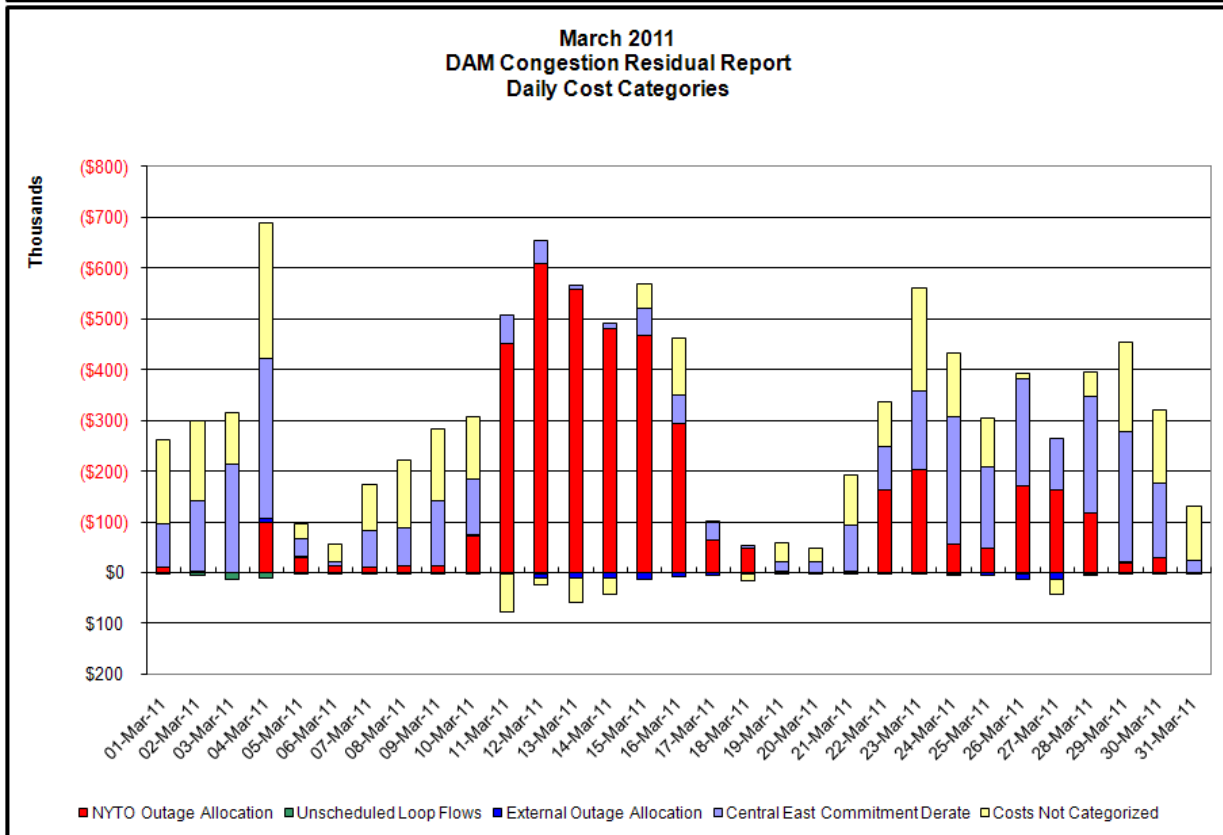
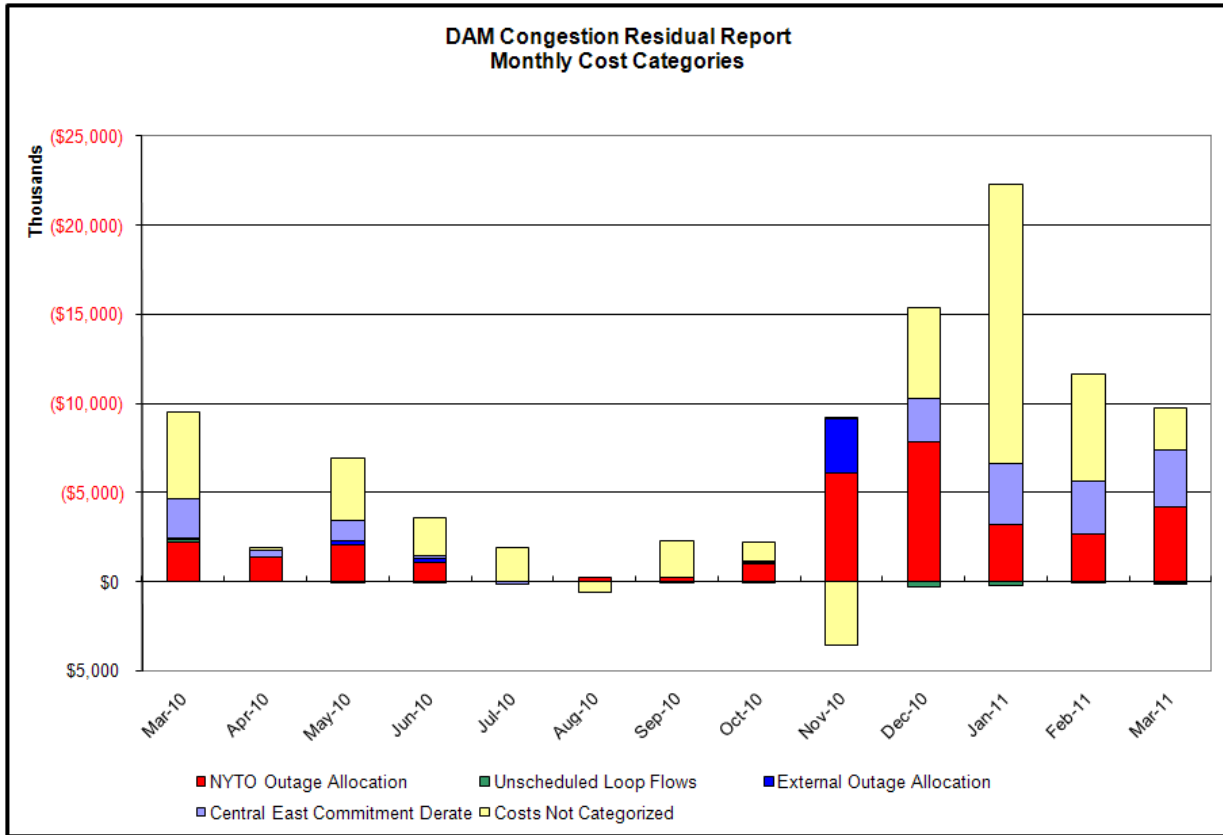
| Day's investigated in May:25,31 | | | |
|---------------------------------|-------------|-------------------|--|
| Event | Date (yyyy) | Hours | Description |
| | 5/25/2011 | 12,13 | Derate Leeds-New Scotland 345kV (#93) for I/o Leeds-New Scotland 345kV (#94) |
| | 5/25/2011 | 13 | IESO DNI Ramp Limit |
| | 5/25/2011 | 13 | Lake Erie Clockwise Circulation, DAM-RTM exceeds 125MW; Leeds-New Scotland (#93) |
| | 5/31/2011 | 10-12,14-16 | Forced outage of Norwalk Harbor-Northport 138kV (#1385) |
| | 5/31/2011 | 10-12,14-16 | Derate Dunwoodie-Shore Road 345kV (#Y50) for I/o SCB Sprainbrook #RNS2 |
| | 5/31/2011 | 10-12,14-16,18-20 | Derate Leeds-New Scotland 345kV (#93) for I/o Leeds-New Scotland 345kV (#94) |
| | 5/31/2011 | 17 | Uprate GoethalsS-GowanusS 345kV (#26) |
| | 5/31/2011 | 15 | NE_AC-NY Scheduling Limit |

Real-Time Balancing Market Congestion Residual (Uplift Cost) Categories

| <u>Category</u> | <u>Cost Assignment</u> | <u>Events Types</u> | <u>Event Examples</u> |
|--------------------------------------|------------------------|---|---|
| Storm Watch | Zone J | Thunderstorm Alert (TSA) | TSA Activations |
| Unscheduled Transmission Outage | Market-wide | Reduction in DAM to RTM transfers related to unscheduled transmission outage | Forced Line Outage, Unit AVR Outages |
| Interface Derate - NYISO Security | Market-wide | Reduction in DAM to RTM transfers not related to transmission outage | Interface Derates due to RTM voltages |
| Interface Derate - External Security | Market-wide | Reduction in DAM to RTM transfers related to External Control Area Security Events | TLR Events, External Transaction Curtailments |
| Unscheduled Loop Flows | Market-wide | Changes in DAM to RTM unscheduled loop flows impacting NYISO Interface transmission constraints | DAM to RTM Clockwise Lake Erie Loop Flows greater than 125 MW |

Monthly Balancing Market Congestion Report Assumptions/Notes

- 1) Storm Watch Costs are identified as daily total uplift costs
- 2) At a minimum those days with \$ 100 K/HR, shortfall of \$ 200 K/Day or more, or surplus of \$ 100 K/Day or more are investigated
- 3) Uplift costs associated with multiple event types are apportioned equally by hour
- 4) Investigations began with Dec 2008. Prior months are reported as Not Investigated.



Day-Ahead Market Congestion Residual Categories

| <u>Category</u> | <u>Cost Assignment</u> | <u>Events Types</u> | <u>Event Examples</u> |
|--------------------------------|-------------------------------------|--|--|
| NYTO Outage Allocation | Responsible TO | Direct allocation to NYTO's responsible for transmission equipment status change. | DAM scheduled outage for equipment modeled in-service for the TCC Auction. |
| Unscheduled Loop Flows | All TO by Monthly Allocation Factor | Residual impact of Lake Erie circulation, MW difference between the DAM and TCC Auction. | Lake Erie Loop Flow Assumptions |
| External Outage Allocation | All TO by Monthly Allocation Factor | Direct allocation to transmission equipment status change caused by change in status of external equipment. | Tie line required out-of-service by TO of neighboring control area. |
| Central East Commitment Derate | All TO by Monthly Allocation Factor | Reductions in the DAM Central East_VC limit as compared to the TCC Auction limit, which are not associated with transmission line outages. | |

