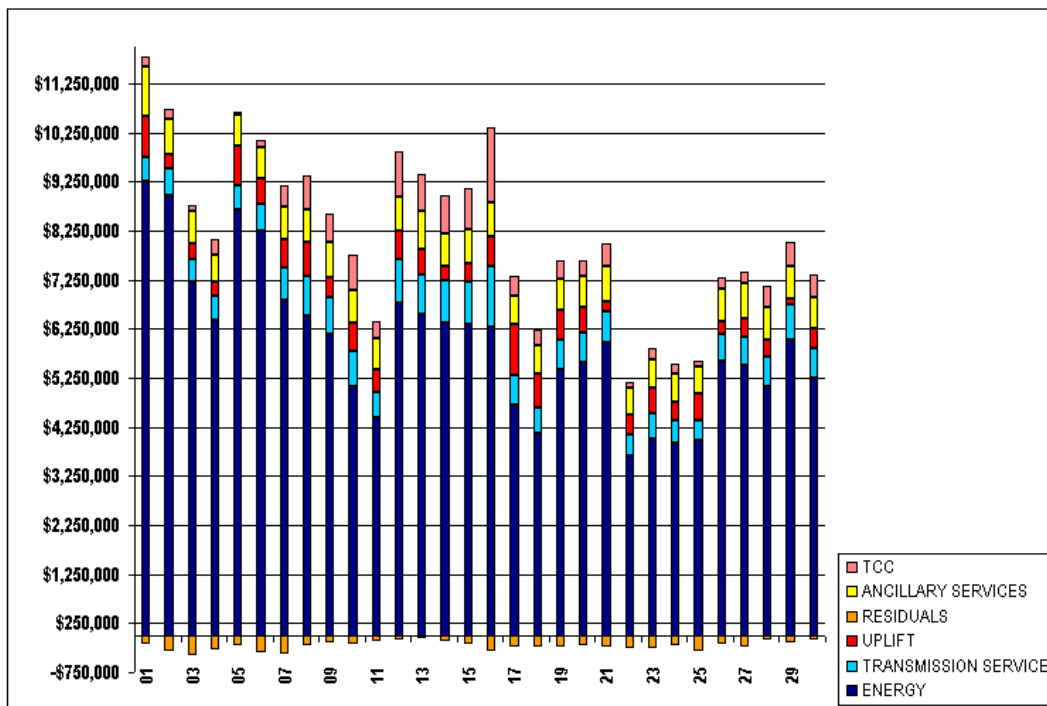


SETTLEMENTS REPORT  
 NOVEMBER 2001 CLOSEOUT SETTLEMENT  
 DECEMBER 6, 2005

**24-MONTH SETTLEMENT ADJUSTMENT MARKET COSTS**

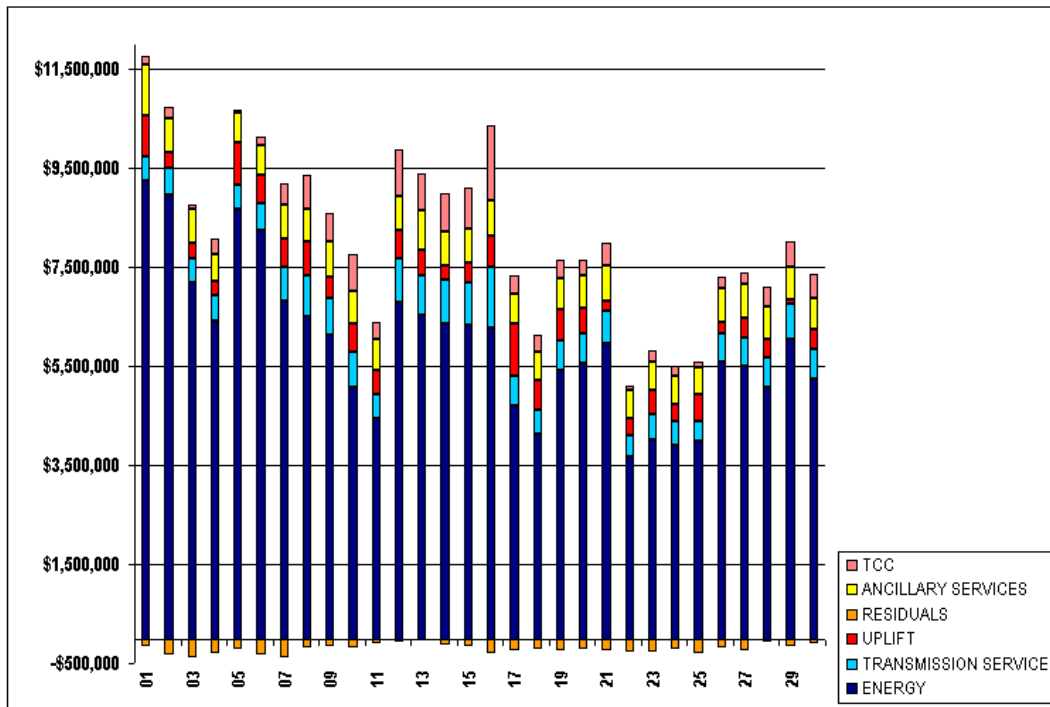
	MONDAY	TUESDAY	WEDNESDAY	THURSDAY	FRIDAY	SATURDAY	SUNDAY
ENERGY				1	2	3	4
TRANSMISSION SERVICE				\$9,250,337.86	\$8,966,570.33	\$7,203,898.48	\$6,418,447.56
UPLIFT				\$487,793.85	\$543,024.21	\$465,905.77	\$504,896.09
RESIDUALS				\$847,271.19	\$308,129.92	\$314,478.63	\$286,431.86
ANCILLARY SERVICES				(\$167,057.81)	(\$330,814.66)	(\$389,813.66)	(\$294,925.34)
TCC				\$1,018,135.21	\$708,097.19	\$683,193.74	\$553,305.37
				\$192,203.50	\$213,072.99	\$111,222.37	\$301,169.42
	5	6	7	8	9	10	11
ENERGY	\$8,673,219.59	\$8,260,141.31	\$6,833,256.44	\$6,511,024.50	\$6,137,812.28	\$5,087,308.19	\$4,449,248.46
TRANSMISSION SERVICE	\$493,791.47	\$525,973.49	\$671,771.69	\$820,433.88	\$748,726.38	\$708,794.45	\$498,357.69
UPLIFT	\$819,283.63	\$538,761.87	\$569,241.73	\$686,798.39	\$412,180.44	\$580,528.46	\$471,347.02
RESIDUALS	(\$216,007.20)	(\$339,824.19)	(\$373,917.83)	(\$197,574.06)	(\$146,908.06)	(\$184,810.14)	(\$113,830.15)
ANCILLARY SERVICES	\$620,035.48	\$624,221.23	\$664,059.95	\$678,601.24	\$715,298.58	\$661,330.44	\$644,633.64
TCC	\$58,549.25	\$153,743.87	\$433,101.64	\$686,615.03	\$582,010.37	\$725,158.47	\$346,660.01
	12	13	14	15	16	17	18
ENERGY	\$6,791,071.95	\$6,541,921.16	\$6,378,135.10	\$6,333,362.84	\$6,287,441.35	\$4,713,518.13	\$4,130,925.85
TRANSMISSION SERVICE	\$895,271.35	\$803,341.70	\$864,359.09	\$874,413.38	\$1,233,302.02	\$594,795.43	\$503,211.29
UPLIFT	\$554,887.57	\$520,532.01	\$286,711.33	\$379,163.06	\$599,756.12	\$1,039,358.47	\$692,652.25
RESIDUALS	(\$83,075.93)	(\$52,615.11)	(\$119,253.33)	(\$160,778.62)	(\$312,808.71)	(\$240,419.51)	(\$223,518.19)
ANCILLARY SERVICES	\$705,952.78	\$792,550.98	\$676,115.09	\$687,274.23	\$716,088.28	\$580,841.81	\$575,171.68
TCC	\$931,840.33	\$732,808.22	\$776,306.43	\$836,766.88	\$1,505,645.68	\$391,903.24	\$325,557.42
	19	20	21	22	23	24	25
ENERGY	\$5,409,772.32	\$5,573,592.35	\$5,958,541.52	\$3,676,384.27	\$4,021,900.50	\$3,914,853.72	\$3,980,465.98
TRANSMISSION SERVICE	\$616,949.35	\$586,987.19	\$658,180.47	\$417,315.42	\$519,636.07	\$479,458.35	\$412,552.90
UPLIFT	\$611,647.93	\$523,538.27	\$203,579.70	\$403,941.38	\$496,172.53	\$363,848.29	\$545,444.06
RESIDUALS	(\$230,945.26)	(\$213,007.13)	(\$235,435.08)	(\$267,509.05)	(\$259,490.29)	(\$203,886.02)	(\$305,322.42)
ANCILLARY SERVICES	\$643,994.49	\$646,793.75	\$721,946.34	\$563,324.22	\$583,742.29	\$564,807.76	\$554,942.04
TCC	\$366,952.43	\$316,524.53	\$438,070.18	\$110,859.86	\$220,486.01	\$208,726.69	\$93,980.28
	26	27	28	29	30		
ENERGY	\$5,587,656.25	\$5,508,060.93	\$5,065,971.60	\$6,042,817.02	\$5,261,953.79		
TRANSMISSION SERVICE	\$568,916.95	\$576,226.29	\$607,450.81	\$715,697.36	\$601,713.75		
UPLIFT	\$248,176.46	\$388,321.82	\$367,686.09	\$102,621.50	\$392,378.00		
RESIDUALS	(\$172,886.87)	(\$243,463.29)	(\$85,567.98)	(\$143,771.20)	(\$100,664.87)		
ANCILLARY SERVICES	\$673,649.02	\$700,599.89	\$653,764.24	\$654,435.06	\$624,177.01		
TCC	\$214,802.93	\$233,211.04	\$420,802.28	\$495,246.24	\$484,425.35		



SETTLEMENTS REPORT  
 NOVEMBER 2001 CLOSEOUT SETTLEMENT  
 DECEMBER 6, 2005

**CLOSEOUT SETTLEMENT MARKET COSTS**

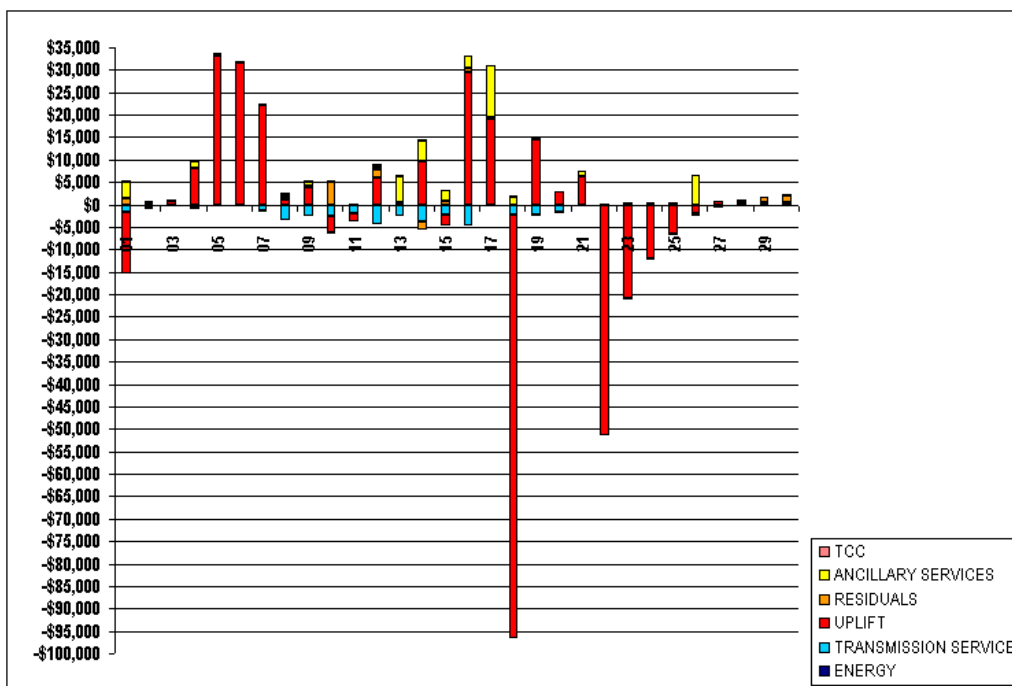
	MONDAY	TUESDAY	WEDNESDAY	THURSDAY	FRIDAY	SATURDAY	SUNDAY
ENERGY				1	2	3	4
TRANSMISSION SERVICE				\$9,250,336.70	\$8,966,570.46	\$7,203,898.60	\$6,418,447.54
UPLIFT				\$486,003.62	\$542,272.36	\$465,823.47	\$504,599.70
RESIDUALS				\$833,761.36	\$307,756.65	\$315,218.93	\$294,461.33
ANCILLARY SERVICES				(\$165,617.88)	(\$330,712.82)	(\$389,602.88)	(\$295,806.91)
TCC				\$1,021,834.19	\$708,750.71	\$683,274.02	\$554,827.33
				\$192,396.73	\$213,148.83	\$111,222.37	\$301,187.66
	5	6	7	8	9	10	11
ENERGY	\$8,673,219.89	\$8,260,141.46	\$6,833,256.41	\$6,511,024.50	\$6,137,812.40	\$5,087,308.21	\$4,449,248.48
TRANSMISSION SERVICE	\$493,667.65	\$525,845.27	\$670,308.23	\$817,026.90	\$746,280.76	\$706,194.79	\$496,284.04
UPLIFT	\$852,466.58	\$570,438.91	\$591,498.59	\$687,892.29	\$416,099.29	\$576,809.76	\$469,618.40
RESIDUALS	(\$215,458.39)	(\$339,445.72)	(\$373,890.35)	(\$197,039.39)	(\$146,547.38)	(\$179,733.04)	(\$113,714.29)
ANCILLARY SERVICES	\$619,913.96	\$623,920.77	\$663,950.31	\$679,256.35	\$716,198.94	\$661,202.76	\$644,686.35
TCC	\$58,549.25	\$153,743.87	\$433,260.76	\$686,939.42	\$582,161.78	\$725,362.86	\$346,771.73
	12	13	14	15	16	17	18
ENERGY	\$6,791,072.11	\$6,541,920.88	\$6,378,134.99	\$6,333,362.60	\$6,287,441.66	\$4,713,517.90	\$4,130,925.59
TRANSMISSION SERVICE	\$890,722.37	\$800,890.12	\$860,671.31	\$872,233.68	\$1,228,733.05	\$594,417.35	\$500,995.52
UPLIFT	\$560,945.84	\$520,604.44	\$296,494.79	\$376,782.34	\$629,320.91	\$1,058,354.57	\$598,166.55
RESIDUALS	(\$81,358.63)	(\$52,352.72)	(\$121,268.26)	(\$159,945.82)	(\$311,825.99)	(\$240,104.39)	(\$223,528.26)
ANCILLARY SERVICES	\$706,598.63	\$798,596.31	\$680,450.63	\$689,584.68	\$718,698.95	\$592,665.37	\$576,817.41
TCC	\$932,377.60	\$732,948.98	\$776,617.23	\$836,746.21	\$1,505,740.42	\$391,822.18	\$325,776.06
	19	20	21	22	23	24	25
ENERGY	\$5,409,772.33	\$5,573,592.32	\$5,958,541.32	\$3,676,384.56	\$4,021,900.48	\$3,914,853.60	\$3,980,466.12
TRANSMISSION SERVICE	\$614,836.22	\$585,207.07	\$658,024.89	\$417,148.60	\$519,501.88	\$479,345.13	\$412,441.29
UPLIFT	\$626,172.17	\$526,408.49	\$209,947.10	\$352,793.76	\$475,509.55	\$351,874.19	\$538,896.40
RESIDUALS	(\$231,193.53)	(\$213,128.60)	(\$235,410.32)	(\$267,387.13)	(\$258,923.75)	(\$203,318.18)	(\$304,775.75)
ANCILLARY SERVICES	\$643,656.50	\$646,697.84	\$723,007.97	\$563,151.28	\$583,404.64	\$564,622.74	\$554,747.59
TCC	\$367,162.43	\$316,700.45	\$437,963.82	\$110,866.10	\$220,438.91	\$208,726.69	\$93,980.28
	26	27	28	29	30		
ENERGY	\$5,587,654.72	\$5,508,060.74	\$5,065,971.84	\$6,042,817.28	\$5,261,953.81		
TRANSMISSION SERVICE	\$568,780.05	\$576,080.87	\$607,330.67	\$715,584.25	\$601,498.34		
UPLIFT	\$246,297.80	\$389,124.24	\$368,301.80	\$103,062.40	\$393,415.91		
RESIDUALS	(\$173,372.35)	(\$243,720.18)	(\$84,982.56)	(\$142,466.56)	(\$99,074.90)		
ANCILLARY SERVICES	\$680,342.41	\$700,516.39	\$653,805.41	\$654,388.69	\$624,477.37		
TCC	\$214,730.76	\$233,069.39	\$420,700.92	\$495,204.31	\$484,120.21		



SETTLEMENTS REPORT  
 NOVEMBER 2001 CLOSEOUT SETTLEMENT  
 DECEMBER 6, 2005

**CLOSEOUT SETTLEMENT MARKET COSTS DELTA**

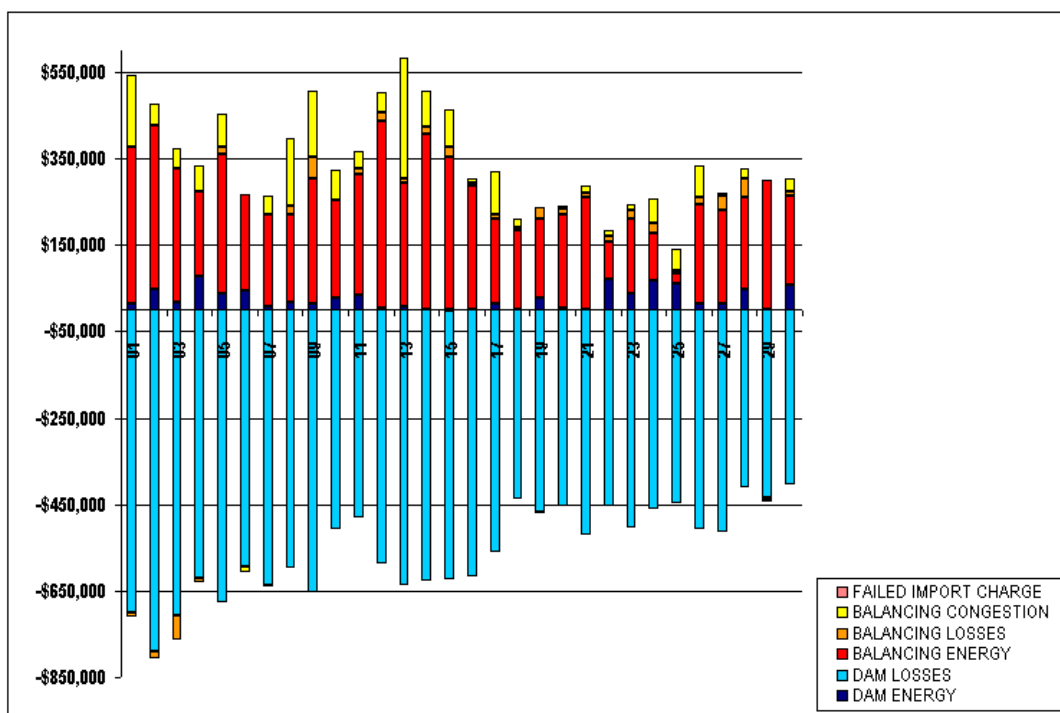
	MONDAY	TUESDAY	WEDNESDAY	THURSDAY	FRIDAY	SATURDAY	SUNDAY
ENERGY				1	2	3	4
TRANSMISSION SERVICE				(\$1.16)	\$0.13	\$0.12	(\$0.02)
UPLIFT				(\$1,790.23)	(\$751.85)	(\$82.30)	(\$296.39)
RESIDUALS				(\$13,509.83)	(\$373.27)	\$740.30	\$8,029.47
ANCILLARY SERVICES				\$1,439.93	\$101.84	\$210.78	(\$881.57)
TCC				\$3,698.98	\$653.52	\$80.28	\$1,521.96
				\$193.23	\$75.84	\$0.00	\$18.24
	5	6	7	8	9	10	11
ENERGY	\$0.30	\$0.15	(\$0.03)	\$0.00	\$0.12	\$0.02	\$0.02
TRANSMISSION SERVICE	(\$123.82)	(\$128.22)	(\$1,463.46)	(\$3,406.98)	(\$2,445.62)	(\$2,599.67)	(\$2,073.65)
UPLIFT	\$33,182.95	\$31,677.04	\$22,256.86	\$1,093.90	\$3,918.85	(\$3,718.70)	(\$1,728.62)
RESIDUALS	\$548.81	\$378.47	\$27.48	\$534.67	\$360.68	\$5,077.10	\$115.86
ANCILLARY SERVICES	(\$121.52)	(\$300.46)	(\$109.64)	\$655.11	\$900.36	(\$127.68)	\$51.71
TCC	\$0.00	\$0.00	\$159.12	\$324.39	\$151.41	\$204.39	\$111.72
	12	13	14	15	16	17	18
ENERGY	\$0.16	(\$0.28)	(\$0.11)	(\$0.24)	\$0.31	(\$0.23)	(\$0.26)
TRANSMISSION SERVICE	(\$4,548.98)	(\$2,451.58)	(\$3,687.78)	(\$2,179.70)	(\$4,568.97)	(\$378.08)	(\$2,215.77)
UPLIFT	\$6,058.27	\$72.43	\$9,783.46	(\$2,380.72)	\$29,564.79	\$18,996.10	(\$94,485.70)
RESIDUALS	\$1,717.30	\$262.39	(\$2,014.93)	\$832.80	\$982.72	\$315.12	(\$10.07)
ANCILLARY SERVICES	\$645.85	\$6,045.33	\$4,335.54	\$2,310.45	\$2,610.67	\$11,823.56	\$1,645.73
TCC	\$537.27	\$140.76	\$310.80	(\$20.67)	\$94.74	(\$81.06)	\$218.64
	19	20	21	22	23	24	25
ENERGY	\$0.01	(\$0.03)	(\$0.20)	\$0.29	(\$0.02)	(\$0.12)	\$0.14
TRANSMISSION SERVICE	(\$2,113.13)	(\$1,780.12)	(\$155.58)	(\$166.82)	(\$134.19)	(\$113.22)	(\$111.61)
UPLIFT	\$14,524.24	\$2,870.22	\$6,367.40	(\$51,147.62)	(\$20,662.98)	(\$11,974.10)	(\$6,547.66)
RESIDUALS	(\$248.27)	(\$121.47)	\$24.76	\$121.92	\$566.54	\$567.84	\$546.67
ANCILLARY SERVICES	(\$337.99)	(\$95.91)	\$1,061.63	(\$172.94)	(\$337.65)	(\$185.02)	(\$194.45)
TCC	\$210.00	\$175.92	(\$100.36)	\$6.24	(\$47.10)	\$0.00	\$0.00
	26	27	28	29	30		
ENERGY	(\$1.53)	(\$0.19)	\$0.24	\$0.26	\$0.02		
TRANSMISSION SERVICE	(\$136.90)	(\$145.42)	(\$120.14)	(\$113.11)	(\$215.41)		
UPLIFT	(\$1,878.66)	\$802.42	\$615.71	\$440.90	\$437.91		
RESIDUALS	(\$485.48)	(\$256.89)	\$585.42	\$1,304.64	\$1,589.97		
ANCILLARY SERVICES	\$6,693.39	(\$83.50)	\$41.17	(\$46.37)	\$300.36		
TCC	(\$72.17)	(\$141.65)	(\$101.36)	(\$41.93)	(\$305.14)		



SETTLEMENTS REPORT  
 NOVEMBER 2001 CLOSEOUT SETTLEMENT  
 DECEMBER 6, 2005

**24-MONTH SETTLEMENT ADJUSTMENT MARKET RESIDUALS**

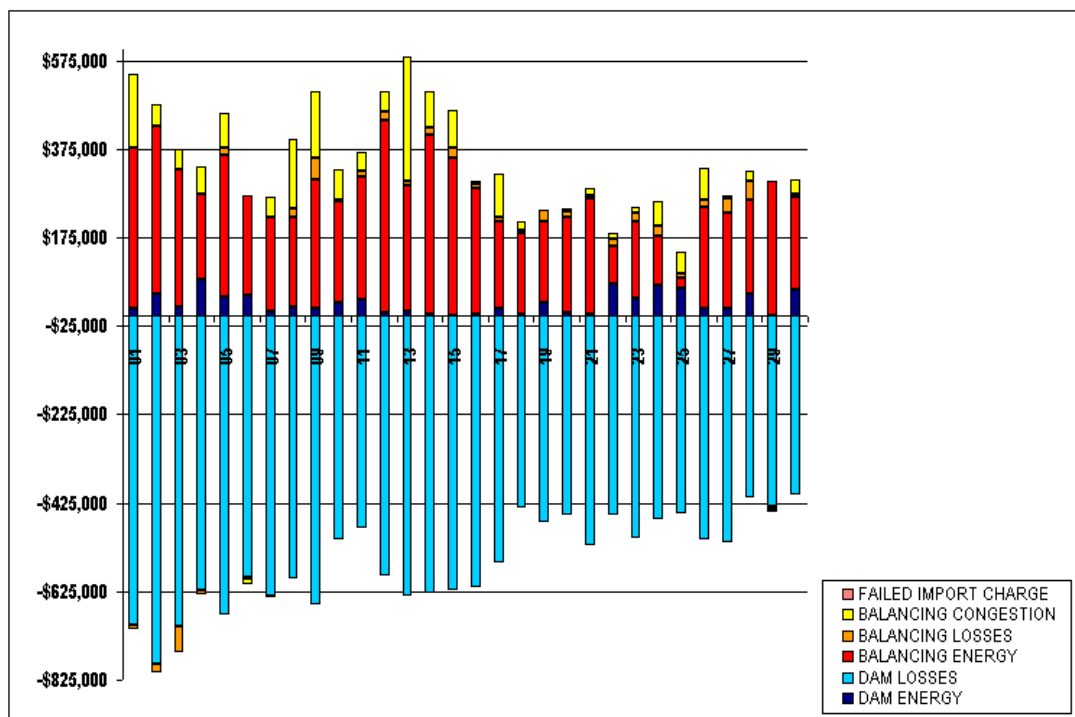
	HONDAY	TUESDAY	WEDNESDAY	THURSDAY	FRIDAY	SATURDAY	SUNDAY
				1	2	3	4
DAM ENERGY				\$16,287.40	\$48,071.27	\$18,805.18	\$78,777.83
DAM LOSSES				(\$701,981.60)	(\$788,978.11)	(\$705,375.51)	(\$621,020.59)
BALANCING ENERGY				\$361,299.67	\$379,801.53	\$308,683.53	\$194,306.06
BALANCING LOSSES				(\$9,034.55)	(\$18,519.43)	(\$58,686.08)	(\$10,727.49)
BALANCING CONGESTION				\$164,481.06	\$48,527.96	\$46,390.20	\$62,204.69
FAILED IMPORT CHARGE				\$0.00	\$0.00	\$0.00	\$0.00
	5	6	7	8	9	10	11
DAM ENERGY	\$39,517.99	\$45,431.23	\$9,186.30	\$18,388.86	\$15,128.35	\$27,505.21	\$34,289.71
DAM LOSSES	(\$676,577.38)	(\$593,257.03)	(\$635,867.90)	(\$596,551.29)	(\$653,452.91)	(\$508,983.16)	(\$481,150.93)
BALANCING ENERGY	\$322,228.38	\$223,125.30	\$212,991.17	\$200,832.97	\$289,270.99	\$225,214.03	\$278,206.31
BALANCING LOSSES	\$14,930.97	(\$1,592.30)	(\$3,881.46)	\$20,092.40	\$48,900.48	\$3,028.82	\$13,766.34
BALANCING CONGESTION	\$77,827.06	(\$13,730.03)	\$43,392.56	\$156,578.07	\$152,584.22	\$66,573.62	\$40,665.16
FAILED IMPORT CHARGE	\$0.00	\$0.00	\$0.00	\$0.00	\$0.00	\$0.00	\$0.00
	12	13	14	15	16	17	18
DAM ENERGY	\$3,820.10	\$8,809.57	\$2,460.89	(\$1,957.15)	\$2,489.97	\$15,844.30	\$1,743.61
DAM LOSSES	(\$588,452.63)	(\$637,068.10)	(\$627,546.97)	(\$621,640.00)	(\$615,911.88)	(\$559,903.24)	(\$436,021.22)
BALANCING ENERGY	\$433,176.95	\$284,906.74	\$404,381.72	\$353,596.69	\$284,257.91	\$194,673.27	\$181,821.00
BALANCING LOSSES	\$19,635.37	\$9,639.46	\$17,315.85	\$22,893.38	\$6,842.21	\$9,100.09	\$8,809.99
BALANCING CONGESTION	\$47,452.97	\$279,199.96	\$82,197.67	\$85,624.49	\$9,180.68	\$99,684.45	\$20,019.35
FAILED IMPORT CHARGE	\$0.00	\$0.00	\$0.00	\$0.00	\$0.00	\$0.00	\$0.00
	19	20	21	22	23	24	25
DAM ENERGY	\$29,248.17	\$5,267.25	\$1,492.29	\$70,361.64	\$36,803.13	\$66,972.86	\$60,442.67
DAM LOSSES	(\$467,393.12)	(\$453,551.57)	(\$522,344.37)	(\$453,284.22)	(\$503,531.77)	(\$460,654.32)	(\$447,861.20)
BALANCING ENERGY	\$181,796.86	\$216,330.27	\$260,269.28	\$86,320.91	\$174,387.60	\$110,371.58	\$23,071.44
BALANCING LOSSES	\$27,767.12	\$11,125.74	\$8,138.50	\$14,542.52	\$19,537.22	\$22,264.64	\$7,971.85
BALANCING CONGESTION	(\$2,526.38)	\$6,567.44	\$16,858.62	\$14,467.54	\$13,227.51	\$57,127.11	\$50,991.43
FAILED IMPORT CHARGE	\$0.00	\$0.00	\$0.00	\$0.00	\$0.00	\$0.00	\$0.00
	26	27	28	29	30		
DAM ENERGY	\$15,915.94	\$14,432.51	\$49,136.95	\$167.55	\$56,628.86		
DAM LOSSES	(\$507,337.50)	(\$513,360.42)	(\$411,781.19)	(\$434,224.27)	(\$405,128.18)		
BALANCING ENERGY	\$227,487.90	\$215,993.88	\$211,406.23	\$300,265.95	\$208,198.58		
BALANCING LOSSES	\$18,348.99	\$32,222.14	\$43,073.47	(\$6,321.52)	\$7,854.33		
BALANCING CONGESTION	\$71,722.68	\$6,714.09	\$22,423.23	(\$4,371.16)	\$31,387.22		
FAILED IMPORT CHARGE	\$0.00	\$0.00	\$0.00	\$0.00	\$0.00		



SETTLEMENTS REPORT  
 NOVEMBER 2001 CLOSEOUT SETTLEMENT  
 DECEMBER 6, 2005

**CLOSEOUT SETTLEMENT MARKET RESIDUALS ANALYSIS**

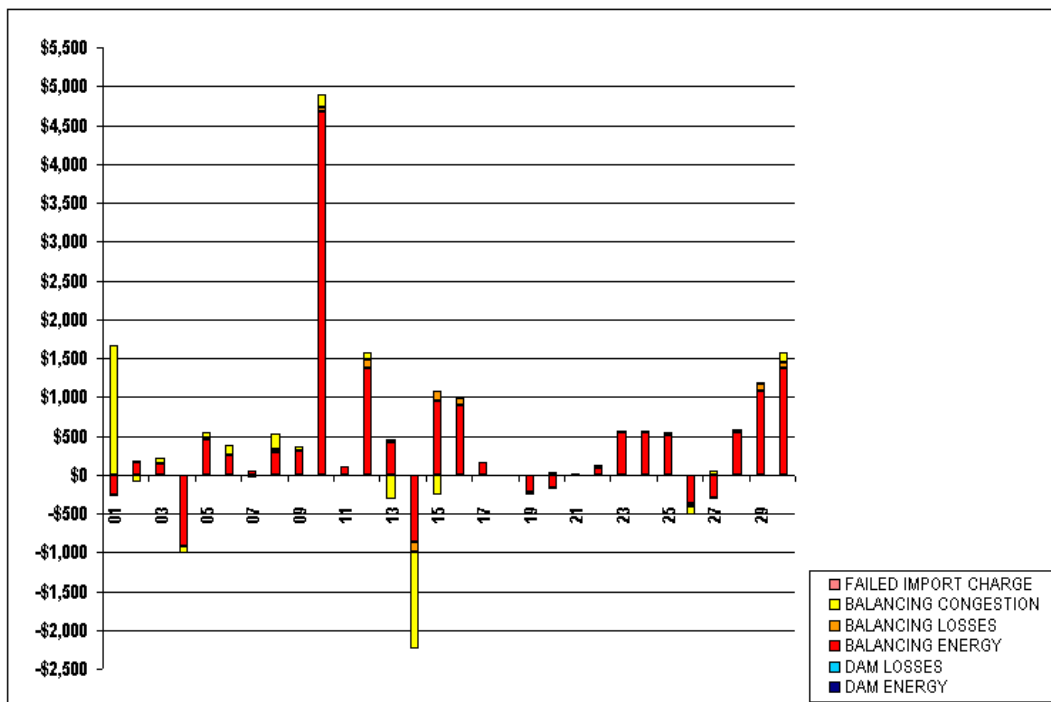
	MONDAY	TUESDAY	WEDNESDAY	THURSDAY	FRIDAY	SATURDAY	SUNDAY
				1	2	3	4
DAM ENERGY				\$16,287.40	\$48,071.27	\$18,805.18	\$78,777.83
DAM LOSSES				(\$701,981.60)	(\$788,978.11)	(\$705,375.51)	(\$621,020.59)
BALANCING ENERGY				\$361,040.34	\$379,969.82	\$308,826.18	\$193,384.13
BALANCING LOSSES				(\$9,058.14)	(\$18,503.01)	(\$58,678.85)	(\$10,727.44)
BALANCING CONGESTION				\$166,154.19	\$48,434.01	\$46,450.10	\$62,109.23
FAILED IMPORT CHARGE				\$0.00	\$0.00	\$0.00	\$0.00
	5	6	7	8	9	10	11
DAM ENERGY	\$39,517.99	\$45,431.23	\$9,186.30	\$18,388.86	\$15,128.35	\$27,505.21	\$34,289.71
DAM LOSSES	(\$676,577.38)	(\$593,257.03)	(\$635,867.90)	(\$596,551.29)	(\$653,452.91)	(\$508,983.16)	(\$481,150.93)
BALANCING ENERGY	\$322,686.11	\$223,370.34	\$213,037.84	\$201,129.29	\$289,579.01	\$229,883.77	\$278,311.34
BALANCING LOSSES	\$14,951.63	(\$1,578.90)	(\$3,876.19)	\$20,113.14	\$48,907.26	\$3,089.17	\$13,772.62
BALANCING CONGESTION	\$77,887.34	(\$13,614.19)	\$43,351.54	\$156,784.70	\$152,623.32	\$66,746.53	\$40,663.96
FAILED IMPORT CHARGE	\$0.00	\$0.00	\$0.00	\$0.00	\$0.00	\$0.00	\$0.00
	12	13	14	15	16	17	18
DAM ENERGY	\$3,820.10	\$8,809.57	\$2,460.89	(\$1,957.15)	\$2,489.97	\$15,844.30	\$1,743.61
DAM LOSSES	(\$588,452.63)	(\$637,068.10)	(\$627,546.97)	(\$621,640.00)	(\$615,911.88)	(\$559,903.24)	(\$436,021.22)
BALANCING ENERGY	\$434,549.05	\$285,325.65	\$403,514.60	\$354,549.18	\$285,158.71	\$194,837.56	\$181,807.47
BALANCING LOSSES	\$19,747.45	\$9,670.13	\$17,190.31	\$23,015.69	\$6,930.74	\$9,103.71	\$8,810.59
BALANCING CONGESTION	\$47,547.75	\$278,875.21	\$80,952.11	\$85,369.63	\$9,165.55	\$99,685.54	\$20,020.16
FAILED IMPORT CHARGE	\$0.00	\$0.00	\$0.00	\$0.00	\$0.00	\$0.00	\$0.00
	19	20	21	22	23	24	25
DAM ENERGY	\$29,248.17	\$5,267.25	\$1,492.29	\$70,361.64	\$36,803.13	\$66,972.86	\$60,442.67
DAM LOSSES	(\$467,393.12)	(\$453,551.57)	(\$522,344.37)	(\$453,284.22)	(\$503,531.77)	(\$460,654.32)	(\$447,861.20)
BALANCING ENERGY	\$181,567.02	\$216,161.94	\$260,263.15	\$86,415.69	\$174,931.41	\$110,908.43	\$23,583.13
BALANCING LOSSES	\$27,744.11	\$11,105.84	\$8,136.61	\$14,549.45	\$19,543.19	\$22,266.31	\$7,978.33
BALANCING CONGESTION	(\$2,523.83)	\$6,536.68	\$16,878.49	\$14,487.07	\$13,244.36	\$67,155.97	\$51,019.90
FAILED IMPORT CHARGE	\$0.00	\$0.00	\$0.00	\$0.00	\$0.00	\$0.00	\$0.00
	26	27	28	29	30		
DAM ENERGY	\$15,915.94	\$14,432.51	\$49,136.95	\$167.55	\$56,628.86		
DAM LOSSES	(\$507,337.50)	(\$513,360.42)	(\$411,781.19)	(\$434,224.27)	(\$405,128.18)		
BALANCING ENERGY	\$227,109.84	\$215,699.27	\$211,943.84	\$301,348.99	\$209,576.76		
BALANCING LOSSES	\$18,320.20	\$32,191.19	\$43,117.52	(\$6,229.99)	\$7,914.79		
BALANCING CONGESTION	\$71,614.73	\$6,765.09	\$22,423.53	(\$4,857.04)	\$31,514.31		
FAILED IMPORT CHARGE	\$0.00	\$0.00	\$0.00	\$0.00	\$0.00		



SETTLEMENTS REPORT  
 NOVEMBER 2001 CLOSEOUT SETTLEMENT  
 DECEMBER 6, 2005

**CLOSEOUT SETTLEMENT MARKET RESIDUALS DELTA ANALYSIS**

	MONDAY	TUESDAY	WEDNESDAY	THURSDAY	FRIDAY	SATURDAY	SUNDAY
				1	2	3	4
DAM ENERGY				\$0.00	\$0.00	\$0.00	\$0.00
DAM LOSSES				\$0.00	\$0.00	\$0.00	\$0.00
BALANCING ENERGY				(\$259.33)	\$168.23	\$142.65	(\$921.93)
BALANCING LOSSES				(\$23.59)	\$16.42	\$7.23	\$0.05
BALANCING CONGESTION				\$1,673.13	(\$93.95)	\$59.90	(\$95.46)
FAILED IMPORT CHARGE				\$0.00	\$0.00	\$0.00	\$0.00
	5	6	7	8	9	10	11
DAM ENERGY	\$0.00	\$0.00	\$0.00	\$0.00	\$0.00	\$0.00	\$0.00
DAM LOSSES	\$0.00	\$0.00	\$0.00	\$0.00	\$0.00	\$0.00	\$0.00
BALANCING ENERGY	\$457.73	\$245.04	\$46.67	\$296.32	\$308.02	\$4,669.74	\$105.03
BALANCING LOSSES	\$20.66	\$13.40	\$5.27	\$20.74	\$6.78	\$60.35	\$6.28
BALANCING CONGESTION	\$60.28	\$115.84	(\$41.02)	\$206.63	\$39.10	\$172.91	(\$1.20)
FAILED IMPORT CHARGE	\$0.00	\$0.00	\$0.00	\$0.00	\$0.00	\$0.00	\$0.00
	12	13	14	15	16	17	18
DAM ENERGY	\$0.00	\$0.00	\$0.00	\$0.00	\$0.00	\$0.00	\$0.00
DAM LOSSES	\$0.00	\$0.00	\$0.00	\$0.00	\$0.00	\$0.00	\$0.00
BALANCING ENERGY	\$1,372.10	\$418.91	(\$367.12)	\$952.49	\$900.80	\$164.29	(\$13.53)
BALANCING LOSSES	\$112.08	\$30.67	(\$125.54)	\$122.31	\$88.53	\$3.62	\$0.60
BALANCING CONGESTION	\$94.78	(\$324.75)	(\$1,245.56)	(\$254.86)	(\$15.13)	\$1.09	\$0.81
FAILED IMPORT CHARGE	\$0.00	\$0.00	\$0.00	\$0.00	\$0.00	\$0.00	\$0.00
	19	20	21	22	23	24	25
DAM ENERGY	\$0.00	\$0.00	\$0.00	\$0.00	\$0.00	\$0.00	\$0.00
DAM LOSSES	\$0.00	\$0.00	\$0.00	\$0.00	\$0.00	\$0.00	\$0.00
BALANCING ENERGY	(\$229.84)	(\$168.33)	(\$6.13)	\$94.78	\$543.81	\$536.85	\$511.69
BALANCING LOSSES	(\$23.01)	(\$19.90)	(\$1.89)	\$6.93	\$5.97	\$1.67	\$6.48
BALANCING CONGESTION	\$2.55	\$29.24	\$19.87	\$19.53	\$16.85	\$28.86	\$28.47
FAILED IMPORT CHARGE	\$0.00	\$0.00	\$0.00	\$0.00	\$0.00	\$0.00	\$0.00
	26	27	28	29	30		
DAM ENERGY	\$0.00	\$0.00	\$0.00	\$0.00	\$0.00		
DAM LOSSES	\$0.00	\$0.00	\$0.00	\$0.00	\$0.00		
BALANCING ENERGY	(\$378.06)	(\$294.61)	\$537.61	\$1,083.04	\$1,378.18		
BALANCING LOSSES	(\$28.79)	(\$30.95)	\$44.05	\$91.53	\$60.46		
BALANCING CONGESTION	(\$107.95)	\$51.00	\$0.30	\$14.12	\$127.09		
FAILED IMPORT CHARGE	\$0.00	\$0.00	\$0.00	\$0.00	\$0.00		

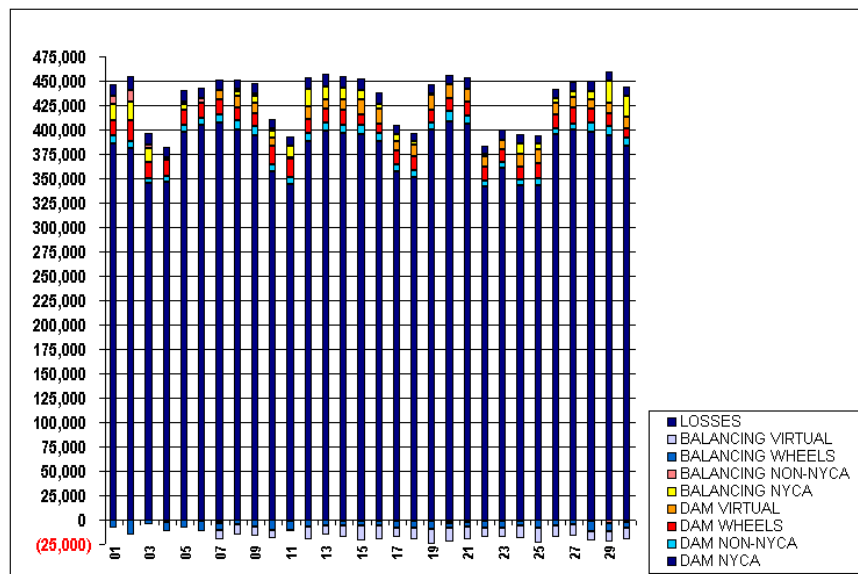


FOR DISCUSSION PURPOSES ONLY

SETTLEMENTS REPORT  
 NOVEMBER 2001 CLOSEOUT SETTLEMENT  
 DECEMBER 6, 2005

**24-MONTH SETTLEMENT ADJUSTMENT MARKET WITHDRAWALS ANALYSIS**

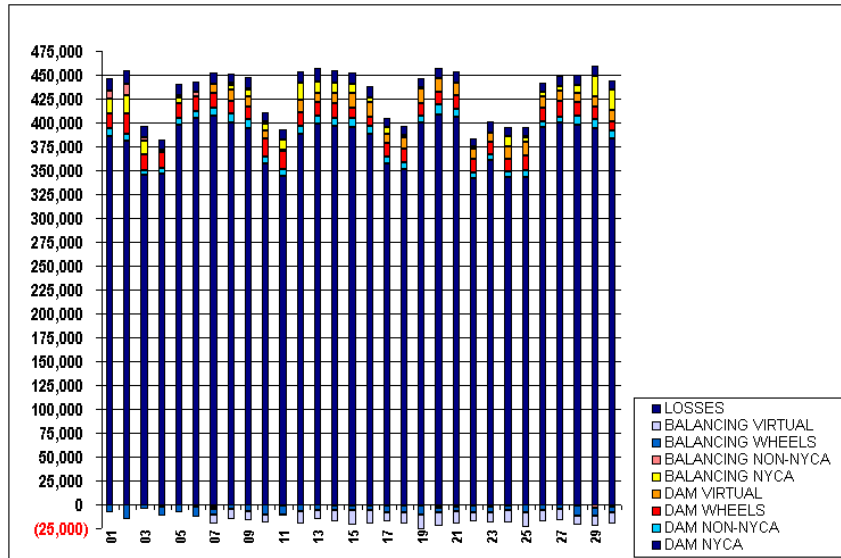
	MONDAY	TUESDAY	WEDNESDAY	THURSDAY	FRIDAY	SATURDAY	SUNDAY
				<b>1</b>	<b>2</b>	<b>3</b>	<b>4</b>
DAM NYCA				386,033	381,131	345,122	346,603
DAM NON-NYCA				8,180	6,689	5,223	5,190
DAM WHEELS				15,716	22,082	16,550	17,500
DAM VIRTUAL				0	0	0	0
BALANCING NYCA				15,825	19,005	13,916	(2,615)
BALANCING NON-NYCA				8,371	11,550	4,007	2,077
BALANCING WHEELS				(8,924)	(15,850)	(6,150)	(8,950)
BALANCING VIRTUAL				0	0	0	0
UFE & LOSSES				12,296	14,251	11,756	10,607
	<b>5</b>	<b>6</b>	<b>7</b>	<b>8</b>	<b>9</b>	<b>10</b>	<b>11</b>
DAM NYCA	397,886	405,205	406,868	400,278	393,840	357,061	343,707
DAM NON-NYCA	7,302	6,828	9,201	9,082	9,183	7,624	7,641
DAM WHEELS	14,800	14,985	14,814	13,549	13,717	18,470	18,311
DAM VIRTUAL	0	0	10,104	11,557	10,318	8,897	1,400
BALANCING NYCA	6,026	(1,676)	(2,527)	4,835	7,732	7,291	12,002
BALANCING NON-NYCA	2,385	4,703	(1,435)	2,429	1,769	1,746	(1,082)
BALANCING WHEELS	(8,850)	(10,800)	(6,400)	(4,249)	(6,919)	(10,180)	(9,915)
BALANCING VIRTUAL	0	0	(10,104)	(11,557)	(10,318)	(8,897)	(1,400)
UFE & LOSSES	11,735	10,545	10,650	9,527	11,093	9,534	10,272
	<b>12</b>	<b>13</b>	<b>14</b>	<b>15</b>	<b>16</b>	<b>17</b>	<b>18</b>
DAM NYCA	388,519	398,804	396,084	394,990	387,937	357,221	351,615
DAM NON-NYCA	8,398	8,025	9,174	9,187	8,160	7,024	6,665
DAM WHEELS	13,931	14,192	14,516	11,831	10,204	13,898	14,200
DAM VIRTUAL	13,045	10,050	11,245	15,315	14,635	10,179	12,296
BALANCING NYCA	18,031	12,567	11,502	9,132	5,407	6,742	3,031
BALANCING NON-NYCA	(291)	(404)	(1,390)	(899)	(725)	(1,345)	(1,550)
BALANCING WHEELS	(6,652)	(5,280)	(5,151)	(5,587)	(4,669)	(6,498)	(6,750)
BALANCING VIRTUAL	(13,045)	(10,050)	(11,245)	(15,315)	(14,635)	(10,179)	(12,296)
UFE & LOSSES	11,429	13,134	12,343	11,672	11,953	9,192	8,927
	<b>19</b>	<b>20</b>	<b>21</b>	<b>22</b>	<b>23</b>	<b>24</b>	<b>25</b>
DAM NYCA	399,921	408,451	406,492	341,198	360,273	342,515	343,177
DAM NON-NYCA	6,674	10,174	7,850	6,879	6,407	6,649	6,584
DAM WHEELS	13,165	12,975	14,686	13,825	12,674	12,300	15,431
DAM VIRTUAL	15,447	14,379	12,838	10,300	10,325	13,267	15,087
BALANCING NYCA	(1,021)	(910)	265	3,196	(329)	10,995	4,948
BALANCING NON-NYCA	1,171	(2,270)	(2,608)	(1,614)	(1,425)	(897)	221
BALANCING WHEELS	(8,825)	(5,001)	(5,102)	(6,425)	(6,147)	(5,100)	(8,231)
BALANCING VIRTUAL	(15,447)	(14,379)	(12,838)	(10,300)	(10,325)	(13,267)	(15,087)
UFE & LOSSES	10,116	10,502	11,423	7,856	10,812	9,370	9,171
	<b>26</b>	<b>27</b>	<b>28</b>	<b>29</b>	<b>30</b>		
DAM NYCA	394,887	399,438	397,196	393,820	383,564		
DAM NON-NYCA	6,476	6,474	10,123	10,270	8,009		
DAM WHEELS	14,326	16,688	14,026	12,096	9,900		
DAM VIRTUAL	11,274	10,729	10,017	10,876	11,675		
BALANCING NYCA	5,189	5,471	8,118	22,465	21,257		
BALANCING NON-NYCA	(225)	(118)	(1,517)	(5,571)	(2,251)		
BALANCING WHEELS	(6,064)	(5,235)	(10,226)	(8,407)	(6,078)		
BALANCING VIRTUAL	(11,274)	(10,729)	(10,017)	(10,876)	(11,675)		
UFE & LOSSES	9,719	9,483	10,826	9,406	9,973		



SETTLEMENTS REPORT  
 NOVEMBER 2001 CLOSEOUT SETTLEMENT  
 DECEMBER 6, 2005

**CLOSEOUT SETTLEMENT MARKET WITHDRAWALS ANALYSIS**

	MONDAY	TUESDAY	WEDNESDAY	THURSDAY	FRIDAY	SATURDAY	SUNDAY
				1	2	3	4
DAM NYCA				386,033	381,131	345,122	346,603
DAM NON-NYCA				8,180	6,689	5,223	5,190
DAM WHEELS				15,716	22,082	16,550	17,500
DAM VIRTUAL				0	0	0	0
BALANCING NYCA				15,451	18,629	13,547	(2,947)
BALANCING NON-NYCA				9,371	11,550	4,007	2,077
BALANCING WHEELS				(8,924)	(15,850)	(5,150)	(8,950)
BALANCING VIRTUAL				0	0	0	0
UFE & LOSSES				12,661	14,632	12,133	10,943
	5	6	7	8	9	10	11
DAM NYCA	397,886	405,205	406,868	400,278	393,840	357,061	343,707
DAM NON-NYCA	7,302	6,828	9,201	9,082	9,183	7,624	7,641
DAM WHEELS	14,800	14,985	14,814	13,549	13,717	13,470	13,311
DAM VIRTUAL	0	0	10,104	11,557	10,318	8,897	1,400
BALANCING NYCA	5,723	(1,989)	(2,836)	4,496	7,292	6,952	11,663
BALANCING NON-NYCA	2,385	4,703	(1,435)	2,429	1,769	1,746	(1,052)
BALANCING WHEELS	(8,850)	(10,800)	(6,400)	(4,249)	(6,919)	(10,180)	(9,915)
BALANCING VIRTUAL	0	0	(10,104)	(11,557)	(10,318)	(8,897)	(1,400)
UFE & LOSSES	12,054	10,870	10,961	9,884	11,446	10,060	10,614
	12	13	14	15	16	17	18
DAM NYCA	388,619	398,804	396,084	394,990	387,937	357,221	351,615
DAM NON-NYCA	8,398	8,025	9,174	9,187	8,160	7,024	6,665
DAM WHEELS	13,931	14,192	14,516	11,831	10,204	13,898	14,200
DAM VIRTUAL	13,045	10,050	11,245	15,315	14,635	10,179	12,296
BALANCING NYCA	17,704	12,241	11,163	8,792	5,086	6,410	2,684
BALANCING NON-NYCA	(201)	(404)	(1,380)	(899)	(725)	(1,348)	(1,550)
BALANCING WHEELS	(6,652)	(5,280)	(5,151)	(5,587)	(4,669)	(6,498)	(6,750)
BALANCING VIRTUAL	(13,045)	(10,050)	(11,245)	(15,315)	(14,635)	(10,179)	(12,296)
UFE & LOSSES	11,781	13,474	12,658	12,042	12,305	9,531	9,277
	19	20	21	22	23	24	25
DAM NYCA	399,921	408,451	406,492	341,198	360,273	342,615	343,177
DAM NON-NYCA	6,674	10,174	7,850	6,879	6,407	6,649	6,584
DAM WHEELS	13,165	12,975	14,686	13,825	12,674	12,300	15,431
DAM VIRTUAL	15,447	14,379	12,838	10,200	10,325	13,267	15,087
BALANCING NYCA	(1,343)	(1,192)	1	2,936	(605)	10,719	4,676
BALANCING NON-NYCA	1,171	(2,270)	(2,608)	(1,614)	(1,425)	(897)	221
BALANCING WHEELS	(8,825)	(5,001)	(5,102)	(6,425)	(6,147)	(5,100)	(8,221)
BALANCING VIRTUAL	(15,447)	(14,379)	(12,838)	(10,200)	(10,325)	(13,267)	(15,087)
UFE & LOSSES	10,431	10,776	11,687	8,121	11,115	9,674	9,468
	26	27	28	29	30		
DAM NYCA	394,887	399,438	397,196	393,820	383,564		
DAM NON-NYCA	6,476	6,474	10,123	10,270	8,009		
DAM WHEELS	14,326	16,688	14,026	12,096	9,900		
DAM VIRTUAL	11,274	10,729	10,017	10,876	11,675		
BALANCING NYCA	4,902	5,226	7,398	22,221	21,053		
BALANCING NON-NYCA	(225)	(118)	(1,517)	(3,571)	(2,251)		
BALANCING WHEELS	(6,054)	(5,238)	(10,226)	(8,407)	(6,078)		
BALANCING VIRTUAL	(11,274)	(10,729)	(10,017)	(10,876)	(11,675)		
UFE & LOSSES	9,981	9,724	11,070	9,685	10,233		

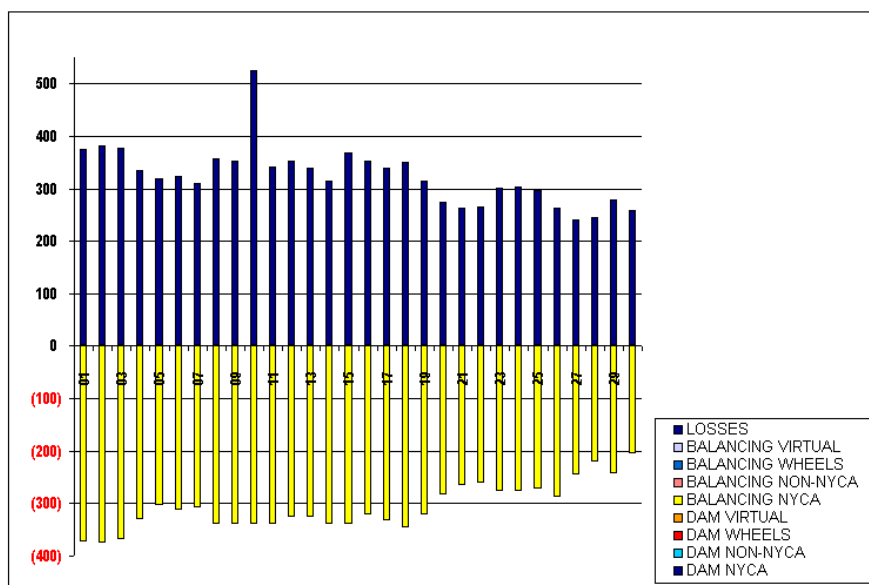




SETTLEMENTS REPORT  
 NOVEMBER 2001 CLOSEOUT SETTLEMENT  
 DECEMBER 6, 2005

**CLOSEOUT SETTLEMENT MARKET WITHDRAWALS DELTA ANALYSIS**

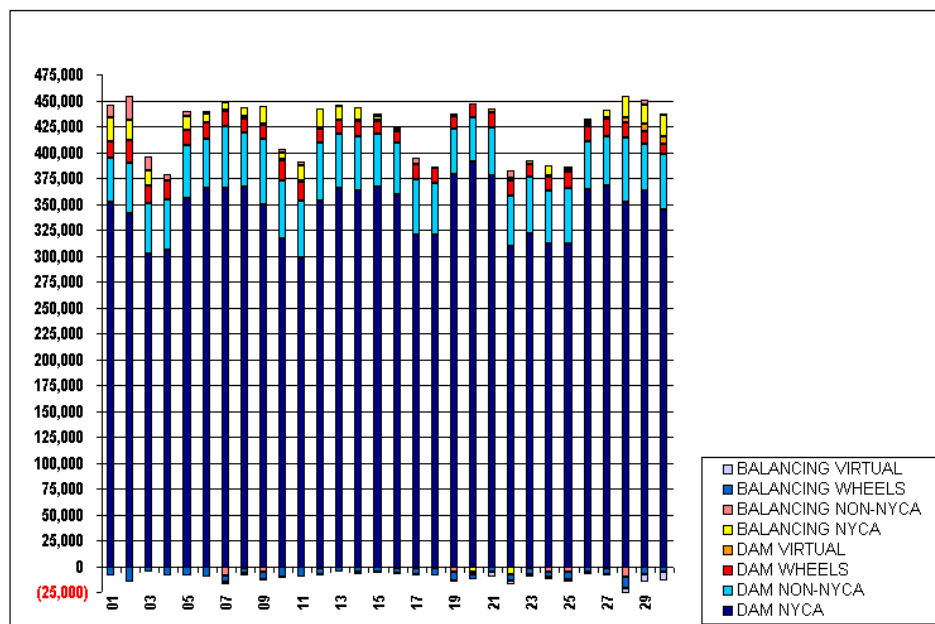
	MONDAY	TUESDAY	WEDNESDAY	THURSDAY	FRIDAY	SATURDAY	SUNDAY
				<b>1</b>	<b>2</b>	<b>3</b>	<b>4</b>
DAM NYCA				0	0	0	0
DAM NON-NYCA				0	0	0	0
DAM WHEELS				0	0	0	0
DAM VIRTUAL				0	0	0	0
BALANCING NYCA				(373)	(376)	(370)	(331)
BALANCING NON-NYCA				0	0	0	0
BALANCING WHEELS				0	0	0	0
BALANCING VIRTUAL				0	0	0	0
UFE & LOSSES				375	381	377	336
	<b>5</b>	<b>6</b>	<b>7</b>	<b>8</b>	<b>9</b>	<b>10</b>	<b>11</b>
DAM NYCA	0	0	0	0	0	0	0
DAM NON-NYCA	0	0	0	0	0	0	0
DAM WHEELS	0	0	0	0	0	0	0
DAM VIRTUAL	0	0	0	0	0	0	0
BALANCING NYCA	(303)	(313)	(309)	(339)	(340)	(339)	(339)
BALANCING NON-NYCA	0	0	0	0	0	0	0
BALANCING WHEELS	0	0	0	0	0	0	0
BALANCING VIRTUAL	0	0	0	0	0	0	0
UFE & LOSSES	319	325	311	358	354	526	342
	<b>12</b>	<b>13</b>	<b>14</b>	<b>15</b>	<b>16</b>	<b>17</b>	<b>18</b>
DAM NYCA	0	0	0	0	0	0	0
DAM NON-NYCA	0	0	0	0	0	0	0
DAM WHEELS	0	0	0	0	0	0	0
DAM VIRTUAL	0	0	0	0	0	0	0
BALANCING NYCA	(326)	(326)	(339)	(340)	(322)	(332)	(347)
BALANCING NON-NYCA	0	0	0	0	0	0	0
BALANCING WHEELS	0	0	0	0	0	0	0
BALANCING VIRTUAL	0	0	0	0	0	0	0
UFE & LOSSES	352	340	315	369	352	339	351
	<b>19</b>	<b>20</b>	<b>21</b>	<b>22</b>	<b>23</b>	<b>24</b>	<b>25</b>
DAM NYCA	0	0	0	0	0	0	0
DAM NON-NYCA	0	0	0	0	0	0	0
DAM WHEELS	0	0	0	0	0	0	0
DAM VIRTUAL	0	0	0	0	0	0	0
BALANCING NYCA	(322)	(292)	(265)	(260)	(276)	(276)	(272)
BALANCING NON-NYCA	0	0	0	0	0	0	0
BALANCING WHEELS	0	0	0	0	0	0	0
BALANCING VIRTUAL	0	0	0	0	0	0	0
UFE & LOSSES	315	275	264	265	302	303	297
	<b>26</b>	<b>27</b>	<b>28</b>	<b>29</b>	<b>30</b>		
DAM NYCA	0	0	0	0	0		
DAM NON-NYCA	0	0	0	0	0		
DAM WHEELS	0	0	0	0	0		
DAM VIRTUAL	0	0	0	0	0		
BALANCING NYCA	(287)	(245)	(220)	(244)	(204)		
BALANCING NON-NYCA	0	0	0	0	0		
BALANCING WHEELS	0	0	0	0	0		
BALANCING VIRTUAL	0	0	0	0	0		
UFE & LOSSES	262	241	244	279	260		



SETTLEMENTS REPORT  
 NOVEMBER 2001 CLOSEOUT SETTLEMENT  
 DECEMBER 6, 2005

**24-MONTH SETTLEMENT ADJUSTMENT MARKET SUPPLY ANALYSIS**

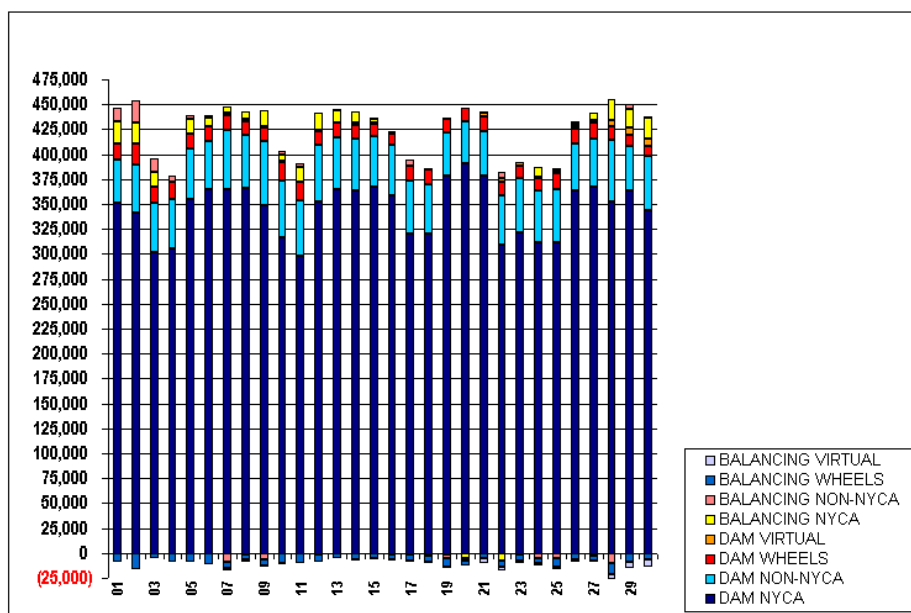
	MONDAY	TUESDAY	WEDNESDAY	THURSDAY	FRIDAY	SATURDAY	SUNDAY
				1	2	3	4
DAM NYCA				351,602	341,433	302,080	305,549
DAM NON-NYCA				43,148	47,646	48,799	49,137
DAM WHEELS				15,716	22,082	16,550	17,500
DAM VIRTUAL				0	0	0	0
BALANCING NYCA				22,563	20,431	14,907	178
BALANCING NON-NYCA				13,091	22,941	13,838	6,197
BALANCING WHEELS				(8,924)	(15,850)	(6,150)	(8,950)
BALANCING VIRTUAL				0	0	0	0
	5	6	7	8	9	10	11
DAM NYCA	355,122	365,172	365,343	366,472	348,986	316,323	298,025
DAM NON-NYCA	51,094	48,225	59,308	52,812	63,801	56,839	55,387
DAM WHEELS	14,800	14,965	14,814	13,549	13,717	18,470	18,311
DAM VIRTUAL	0	0	1,804	2,348	1,125	1,371	800
BALANCING NYCA	13,951	8,498	6,823	7,980	16,324	6,170	14,439
BALANCING NON-NYCA	4,361	2,636	(9,317)	(2,063)	(6,819)	3,523	3,564
BALANCING WHEELS	(8,850)	(10,800)	(6,400)	(4,249)	(6,919)	(10,180)	(9,915)
BALANCING VIRTUAL	0	0	(1,804)	(2,348)	(1,125)	(1,371)	(800)
	12	13	14	15	16	17	18
DAM NYCA	352,767	364,994	363,090	366,920	359,102	319,963	320,112
DAM NON-NYCA	56,434	52,086	51,999	51,270	50,647	54,105	49,950
DAM WHEELS	13,931	14,192	14,516	11,831	10,204	13,898	14,200
DAM VIRTUAL	907	106	1,500	1,350	1,073	926	575
BALANCING NYCA	18,032	13,055	12,114	3,543	(1,609)	(1,277)	(2,292)
BALANCING NON-NYCA	(1,758)	1,241	(730)	1,874	2,442	5,540	568
BALANCING WHEELS	(6,652)	(5,280)	(5,151)	(5,587)	(4,669)	(6,498)	(6,750)
BALANCING VIRTUAL	(907)	(106)	(1,500)	(1,350)	(1,073)	(926)	(575)
	19	20	21	22	23	24	25
DAM NYCA	378,365	391,434	377,907	308,691	321,287	311,433	311,942
DAM NON-NYCA	43,830	41,997	45,426	49,714	54,967	51,936	53,286
DAM WHEELS	13,165	12,975	14,686	13,825	12,674	12,300	15,431
DAM VIRTUAL	1,275	75	4,180	3,299	2,799	1,991	2,550
BALANCING NYCA	(922)	(5,135)	(645)	(7,896)	(1,004)	9,405	3,259
BALANCING NON-NYCA	(4,412)	(2,399)	284	6,842	(411)	(5,515)	(5,015)
BALANCING WHEELS	(8,825)	(5,001)	(5,102)	(6,425)	(6,147)	(5,100)	(8,231)
BALANCING VIRTUAL	(1,275)	(75)	(4,180)	(3,299)	(2,799)	(1,991)	(2,550)
	26	27	28	29	30		
DAM NYCA	363,652	367,695	352,433	363,188	343,960		
DAM NON-NYCA	47,155	47,656	61,899	44,489	53,834		
DAM WHEELS	14,326	16,688	14,026	12,096	9,900		
DAM VIRTUAL	2,425	2,025	5,401	7,300	8,045		
BALANCING NYCA	2,721	7,333	21,067	18,169	20,267		
BALANCING NON-NYCA	2,093	(2,136)	(10,693)	5,094	1,742		
BALANCING WHEELS	(6,054)	(5,238)	(10,226)	(8,407)	(6,078)		
BALANCING VIRTUAL	(2,425)	(2,025)	(5,401)	(7,300)	(8,045)		



SETTLEMENTS REPORT  
 NOVEMBER 2001 CLOSEOUT SETTLEMENT  
 DECEMBER 6, 2005

**CLOSEOUT SETTLEMENT MARKET SUPPLY ANALYSIS**

	MONDAY	TUESDAY	WEDNESDAY	THURSDAY	FRIDAY	SATURDAY	SUNDAY
				1	2	3	4
DAM NYCA				351,602	341,433	302,080	305,549
DAM NON-NYCA				43,148	47,646	48,799	49,137
DAM WHEELS				15,716	22,082	16,550	17,800
DAM VIRTUAL				0	0	0	0
BALANCING NYCA				22,555	20,437	14,915	182
BALANCING NON-NYCA				13,091	22,941	13,838	6,197
BALANCING WHEELS				(8,924)	(15,850)	(5,150)	(8,950)
BALANCING VIRTUAL				0	0	0	0
	5	6	7	8	9	10	11
DAM NYCA	355,122	365,172	365,343	366,472	348,986	316,323	298,025
DAM NON-NYCA	51,094	48,225	59,308	52,812	63,801	56,839	55,387
DAM WHEELS	14,800	14,965	14,814	13,549	13,717	18,470	18,311
DAM VIRTUAL	0	0	1,804	2,348	1,125	1,371	800
BALANCING NYCA	13,968	8,509	6,825	7,998	16,338	6,358	14,442
BALANCING NON-NYCA	4,361	2,636	(9,517)	(2,063)	(5,819)	3,523	3,564
BALANCING WHEELS	(8,850)	(10,800)	(6,400)	(4,249)	(6,319)	(10,180)	(9,915)
BALANCING VIRTUAL	0	0	(1,804)	(2,348)	(1,125)	(1,371)	(800)
	12	13	14	15	16	17	18
DAM NYCA	352,767	364,994	363,090	366,920	359,102	319,963	320,112
DAM NON-NYCA	56,434	52,086	51,999	51,270	50,647	54,105	49,950
DAM WHEELS	13,931	14,192	14,516	11,831	10,204	13,898	14,200
DAM VIRTUAL	907	106	1,500	1,350	1,073	926	575
BALANCING NYCA	18,057	13,069	12,090	3,572	(1,578)	(1,270)	(2,288)
BALANCING NON-NYCA	(1,758)	1,241	(730)	1,874	2,442	5,540	568
BALANCING WHEELS	(6,652)	(5,280)	(5,151)	(5,537)	(4,663)	(6,498)	(6,750)
BALANCING VIRTUAL	(907)	(106)	(1,500)	(1,350)	(1,073)	(926)	(575)
	19	20	21	22	23	24	25
DAM NYCA	378,365	391,434	377,907	308,691	321,287	311,433	311,942
DAM NON-NYCA	43,830	41,997	45,426	49,714	54,967	51,936	53,286
DAM WHEELS	13,165	12,975	14,686	13,825	12,674	12,300	15,431
DAM VIRTUAL	1,275	75	4,180	3,299	2,799	1,991	2,550
BALANCING NYCA	(929)	(5,142)	(645)	(7,891)	(978)	9,432	3,285
BALANCING NON-NYCA	(4,412)	(2,399)	284	6,842	(411)	(5,515)	(5,015)
BALANCING WHEELS	(8,825)	(5,901)	(5,102)	(6,425)	(6,147)	(5,100)	(8,231)
BALANCING VIRTUAL	(1,275)	(75)	(4,180)	(3,299)	(2,799)	(1,991)	(2,550)
	26	27	28	29	30		
DAM NYCA	363,652	367,695	352,433	363,188	343,960		
DAM NON-NYCA	47,155	47,556	61,899	44,489	53,834		
DAM WHEELS	14,326	16,688	14,026	12,096	9,900		
DAM VIRTUAL	2,425	2,025	5,401	7,300	8,045		
BALANCING NYCA	2,696	7,329	21,081	18,205	20,322		
BALANCING NON-NYCA	2,093	(2,136)	(10,693)	5,094	1,742		
BALANCING WHEELS	(6,054)	(5,238)	(10,225)	(6,407)	(6,075)		
BALANCING VIRTUAL	(2,425)	(2,025)	(5,401)	(7,300)	(8,045)		



SETTLEMENTS REPORT  
 NOVEMBER 2001 CLOSEOUT SETTLEMENT  
 DECEMBER 6, 2005

**CLOSEOUT SETTLEMENT MARKET SUPPLY DELTA ANALYSIS**

	MONDAY	TUESDAY	WEDNESDAY	THURSDAY	FRIDAY	SATURDAY	SUNDAY
				<b>1</b>	<b>2</b>	<b>3</b>	<b>4</b>
DAM NYCA				0	0	0	0
DAM NON-NYCA				0	0	0	0
DAM WHEELS				0	0	0	0
DAM VIRTUAL				0	0	0	0
BALANCING NYCA				2	5	7	4
BALANCING NON-NYCA				0	0	0	0
BALANCING WHEELS				0	0	0	0
BALANCING VIRTUAL				0	0	0	0
	<b>5</b>	<b>6</b>	<b>7</b>	<b>8</b>	<b>9</b>	<b>10</b>	<b>11</b>
DAM NYCA	0	0	0	0	0	0	0
DAM NON-NYCA	0	0	0	0	0	0	0
DAM WHEELS	0	0	0	0	0	0	0
DAM VIRTUAL	0	0	0	0	0	0	0
BALANCING NYCA	16	11	2	19	14	187	3
BALANCING NON-NYCA	0	0	0	0	0	0	0
BALANCING WHEELS	0	0	0	0	0	0	0
BALANCING VIRTUAL	0	0	0	0	0	0	0
	<b>12</b>	<b>13</b>	<b>14</b>	<b>15</b>	<b>16</b>	<b>17</b>	<b>18</b>
DAM NYCA	0	0	0	0	0	0	0
DAM NON-NYCA	0	0	0	0	0	0	0
DAM WHEELS	0	0	0	0	0	0	0
DAM VIRTUAL	0	0	0	0	0	0	0
BALANCING NYCA	25	14	(24)	29	31	7	4
BALANCING NON-NYCA	0	0	0	0	0	0	0
BALANCING WHEELS	0	0	0	0	0	0	0
BALANCING VIRTUAL	0	0	0	0	0	0	0
	<b>19</b>	<b>20</b>	<b>21</b>	<b>22</b>	<b>23</b>	<b>24</b>	<b>25</b>
DAM NYCA	0	0	0	0	0	0	0
DAM NON-NYCA	0	0	0	0	0	0	0
DAM WHEELS	0	0	0	0	0	0	0
DAM VIRTUAL	0	0	0	0	0	0	0
BALANCING NYCA	(7)	(8)	(0)	5	26	27	25
BALANCING NON-NYCA	0	0	0	0	0	0	0
BALANCING WHEELS	0	0	0	0	0	0	0
BALANCING VIRTUAL	0	0	0	0	0	0	0
	<b>26</b>	<b>27</b>	<b>28</b>	<b>29</b>	<b>30</b>		
DAM NYCA	0	0	0	0	0		
DAM NON-NYCA	0	0	0	0	0		
DAM WHEELS	0	0	0	0	0		
DAM VIRTUAL	0	0	0	0	0		
BALANCING NYCA	(25)	(4)	24	35	55		
BALANCING NON-NYCA	0	0	0	0	0		
BALANCING WHEELS	0	0	0	0	0		
BALANCING VIRTUAL	0	0	0	0	0		

