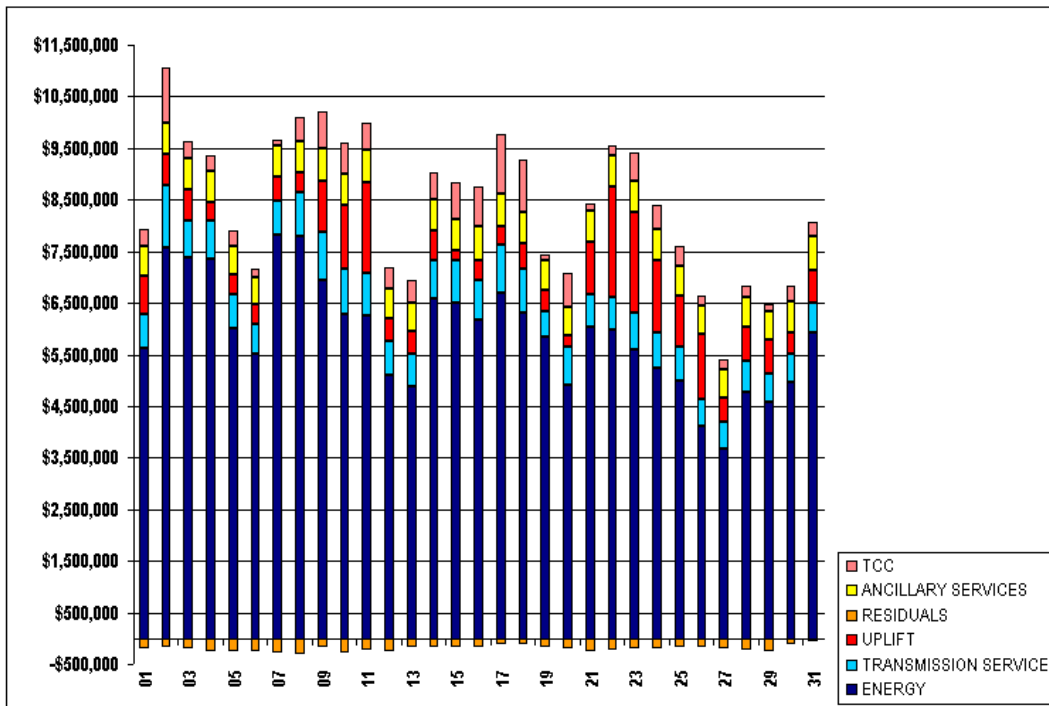


SETTLEMENTS REPORT
 JANUARY 2002 CLOSEOUT SETTLEMENT
 DECEMBER 6, 2005

24-MONTH SETTLEMENT ADJUSTMENT MARKET COSTS

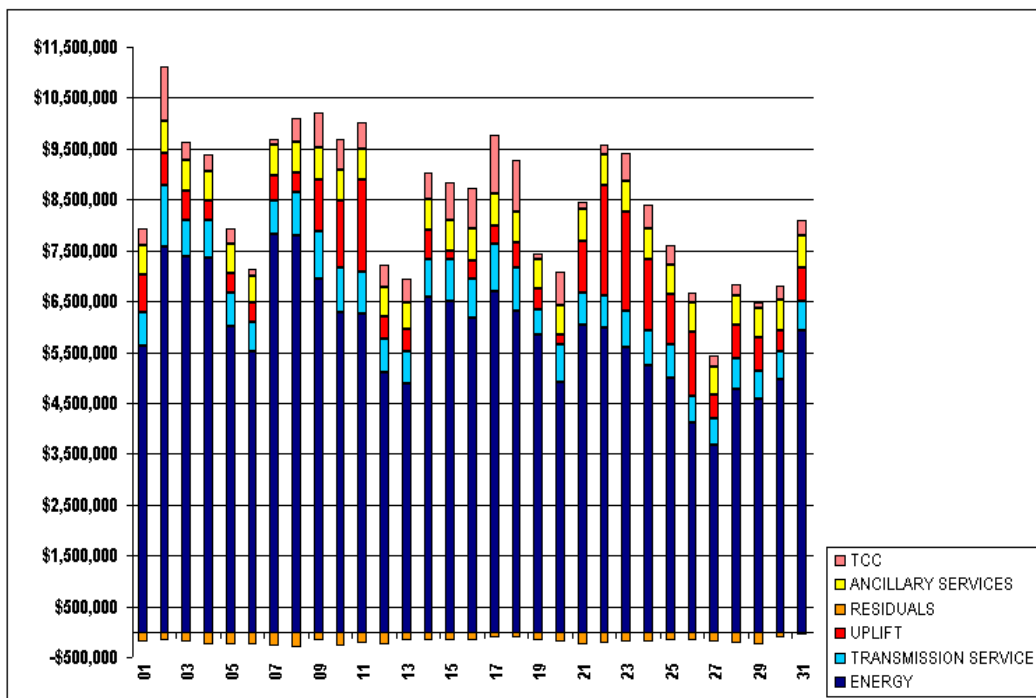
	MONDAY	TUESDAY	WEDNESDAY	THURSDAY	FRIDAY	SATURDAY	SUNDAY
		1	2	3	4	5	6
ENERGY		\$5,634,761.58	\$7,579,358.02	\$7,390,747.81	\$7,359,060.64	\$6,009,707.12	\$5,515,722.53
TRANSMISSION SERVICE		\$659,552.15	\$1,214,711.10	\$703,748.37	\$742,311.35	\$649,907.78	\$580,778.88
UPLIFT		\$727,176.82	\$581,125.87	\$595,982.49	\$354,538.21	\$388,721.89	\$372,605.10
RESIDUALS		(\$199,937.91)	(\$163,250.03)	(\$207,466.95)	(\$261,075.46)	(\$246,243.60)	(\$254,398.61)
ANCILLARY SERVICES		\$575,074.36	\$612,071.07	\$604,991.78	\$596,213.77	\$557,085.04	\$521,506.48
TCC		\$344,319.49	\$1,070,871.91	\$333,630.32	\$315,994.11	\$300,908.81	\$158,024.84
	7	8	9	10	11	12	13
ENERGY	\$7,815,975.00	\$7,782,408.00	\$6,938,331.19	\$6,282,766.32	\$6,266,900.03	\$5,099,120.66	\$4,870,641.59
TRANSMISSION SERVICE	\$657,113.77	\$872,674.88	\$928,448.17	\$884,615.50	\$822,804.51	\$654,657.14	\$645,631.74
UPLIFT	\$481,989.85	\$376,526.14	\$1,008,745.07	\$1,233,666.38	\$1,758,667.13	\$453,290.71	\$432,524.95
RESIDUALS	(\$278,308.31)	(\$306,419.50)	(\$169,174.51)	(\$276,895.92)	(\$216,714.81)	(\$243,977.39)	(\$182,064.76)
ANCILLARY SERVICES	\$603,465.30	\$614,454.34	\$628,456.60	\$597,749.45	\$613,826.16	\$578,217.81	\$548,899.68
TCC	\$107,115.72	\$465,682.97	\$699,034.31	\$607,415.11	\$518,728.67	\$414,534.17	\$440,562.18
	14	15	16	17	18	19	20
ENERGY	\$6,581,706.69	\$6,509,506.03	\$6,167,301.62	\$6,696,785.40	\$6,305,403.07	\$5,829,601.23	\$4,912,164.08
TRANSMISSION SERVICE	\$755,851.57	\$821,099.53	\$778,498.11	\$929,582.75	\$866,559.97	\$496,801.65	\$732,483.16
UPLIFT	\$557,391.23	\$178,934.13	\$390,833.50	\$359,523.55	\$475,577.17	\$425,859.77	\$214,311.92
RESIDUALS	(\$167,619.10)	(\$181,558.77)	(\$163,503.76)	(\$108,731.94)	(\$102,264.76)	(\$166,521.71)	(\$187,450.12)
ANCILLARY SERVICES	\$621,149.65	\$606,886.89	\$640,679.79	\$635,582.30	\$623,245.01	\$576,379.02	\$574,424.11
TCC	\$522,537.68	\$720,020.21	\$786,894.83	\$1,157,635.24	\$1,001,418.29	\$101,797.61	\$656,896.67
	21	22	23	24	25	26	27
ENERGY	\$6,039,726.11	\$5,988,971.86	\$5,594,392.38	\$5,234,175.14	\$4,994,099.99	\$4,103,646.37	\$3,673,197.29
TRANSMISSION SERVICE	\$630,987.90	\$626,884.28	\$723,949.64	\$693,233.91	\$666,061.30	\$537,497.29	\$516,883.61
UPLIFT	\$1,012,655.08	\$2,144,342.36	\$1,934,156.87	\$1,386,899.08	\$978,041.66	\$1,249,880.56	\$478,658.50
RESIDUALS	(\$260,654.51)	(\$235,641.90)	(\$185,374.10)	(\$192,304.32)	(\$169,075.68)	(\$182,108.93)	(\$185,830.62)
ANCILLARY SERVICES	\$610,416.73	\$592,597.22	\$621,213.16	\$610,669.64	\$576,845.45	\$565,672.49	\$547,899.71
TCC	\$141,840.89	\$200,080.10	\$537,513.31	\$481,186.90	\$373,170.64	\$188,704.03	\$200,815.30
	28	29	30	31			
ENERGY	\$4,774,789.63	\$4,574,183.10	\$4,969,707.25	\$5,918,358.29			
TRANSMISSION SERVICE	\$599,629.39	\$556,409.82	\$556,927.21	\$588,552.36			
UPLIFT	\$647,790.12	\$645,762.94	\$397,569.96	\$626,949.14			
RESIDUALS	(\$216,553.49)	(\$244,129.05)	(\$112,763.00)	(\$72,411.44)			
ANCILLARY SERVICES	\$590,567.26	\$565,353.82	\$606,909.03	\$649,367.69			
TCC	\$206,596.60	\$123,880.75	\$288,984.17	\$287,492.66			



SETTLEMENTS REPORT
 JANUARY 2002 CLOSEOUT SETTLEMENT
 DECEMBER 6, 2005

CLOSEOUT SETTLEMENT MARKET COSTS

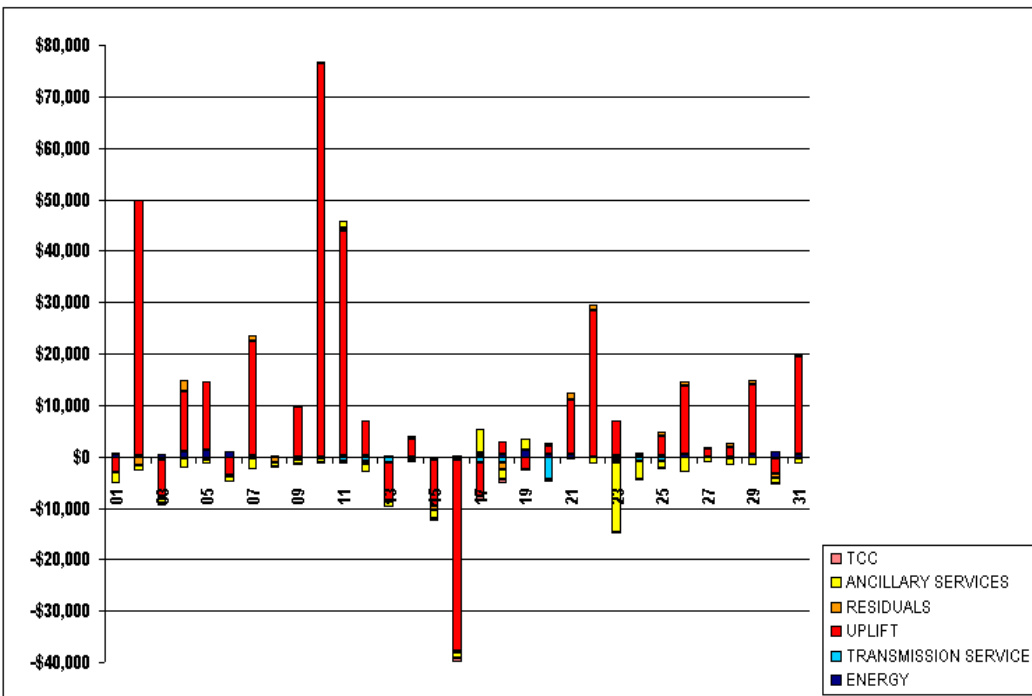
	MONDAY	TUESDAY	WEDNESDAY	THURSDAY	FRIDAY	SATURDAY	SUNDAY
		1	2	3	4	5	6
ENERGY		\$5,635,222.68	\$7,579,547.33	\$7,391,143.63	\$7,360,023.71	\$6,010,841.34	\$5,516,630.56
TRANSMISSION SERVICE		\$659,385.84	\$1,214,490.91	\$703,112.50	\$741,998.05	\$649,797.07	\$580,661.25
UPLIFT		\$724,304.63	\$630,880.85	\$588,959.58	\$366,298.13	\$402,104.17	\$369,111.95
RESIDUALS		(\$199,584.09)	(\$164,703.16)	(\$207,800.22)	(\$258,902.64)	(\$246,663.53)	(\$254,617.25)
ANCILLARY SERVICES		\$572,902.59	\$611,020.78	\$603,779.84	\$594,421.37	\$556,126.68	\$520,286.88
TCC		\$344,272.24	\$1,070,798.54	\$333,370.18	\$315,845.73	\$300,908.81	\$158,024.84
	7	8	9	10	11	12	13
ENERGY	\$7,816,089.25	\$7,782,491.74	\$6,938,370.43	\$6,282,804.10	\$6,267,058.33	\$5,099,302.60	\$4,870,641.71
TRANSMISSION SERVICE	\$656,861.88	\$872,490.72	\$928,212.18	\$884,247.49	\$821,912.08	\$653,668.19	\$644,506.14
UPLIFT	\$504,191.90	\$376,512.02	\$1,018,320.83	\$1,310,134.36	\$1,802,305.73	\$459,970.52	\$424,940.61
RESIDUALS	(\$276,974.66)	(\$307,396.50)	(\$169,512.89)	(\$276,698.34)	(\$216,010.48)	(\$244,571.32)	(\$181,858.94)
ANCILLARY SERVICES	\$601,314.39	\$613,513.34	\$627,462.11	\$596,823.21	\$615,000.40	\$576,685.28	\$547,848.66
TCC	\$107,014.48	\$465,555.61	\$698,970.08	\$607,269.31	\$518,186.03	\$414,532.54	\$440,645.38
	14	15	16	17	18	19	20
ENERGY	\$6,581,706.50	\$6,509,506.45	\$6,167,456.79	\$6,697,080.50	\$6,305,864.76	\$5,830,914.24	\$4,912,624.56
TRANSMISSION SERVICE	\$755,273.62	\$820,354.72	\$777,786.76	\$928,324.32	\$865,494.04	\$496,598.16	\$727,970.15
UPLIFT	\$560,961.76	\$170,098.42	\$353,758.63	\$353,182.87	\$478,038.15	\$423,436.05	\$215,799.67
RESIDUALS	(\$167,135.90)	(\$182,465.08)	(\$163,911.45)	(\$108,217.81)	(\$103,763.78)	(\$166,552.38)	(\$187,355.71)
ANCILLARY SERVICES	\$620,973.69	\$605,345.88	\$639,553.64	\$640,172.60	\$621,441.39	\$578,546.62	\$573,965.38
TCC	\$522,214.73	\$719,398.55	\$786,325.77	\$1,156,659.90	\$1,000,589.59	\$101,708.98	\$657,415.07
	21	22	23	24	25	26	27
ENERGY	\$6,040,308.80	\$5,988,978.70	\$5,594,465.80	\$5,234,177.58	\$4,994,191.43	\$4,104,054.72	\$3,673,196.86
TRANSMISSION SERVICE	\$630,626.49	\$626,733.53	\$723,396.52	\$692,262.84	\$665,114.63	\$537,280.72	\$516,765.43
UPLIFT	\$1,023,207.70	\$2,172,822.27	\$1,940,923.35	\$1,387,177.46	\$981,966.10	\$1,263,355.18	\$480,307.83
RESIDUALS	(\$259,420.50)	(\$234,728.37)	(\$186,122.98)	(\$191,809.78)	(\$168,362.49)	(\$181,470.27)	(\$185,629.62)
ANCILLARY SERVICES	\$610,239.75	\$591,234.53	\$607,799.51	\$607,290.38	\$575,551.89	\$562,692.51	\$546,940.04
TCC	\$141,840.89	\$200,048.15	\$537,134.02	\$480,807.06	\$372,986.25	\$188,632.08	\$200,795.42
	28	29	30	31			
ENERGY	\$4,774,789.21	\$4,574,670.27	\$4,970,624.20	\$5,918,741.15			
TRANSMISSION SERVICE	\$599,367.96	\$556,237.38	\$556,602.07	\$588,135.10			
UPLIFT	\$649,689.94	\$659,229.81	\$394,475.42	\$646,059.04			
RESIDUALS	(\$215,844.42)	(\$243,256.05)	(\$113,497.64)	(\$72,217.62)			
ANCILLARY SERVICES	\$589,101.30	\$563,819.08	\$605,710.59	\$648,470.24			
TCC	\$206,549.08	\$123,864.88	\$288,767.74	\$287,333.53			



SETTLEMENTS REPORT
 JANUARY 2002 CLOSEOUT SETTLEMENT
 DECEMBER 6, 2005

CLOSEOUT SETTLEMENT MARKET COSTS DELTA

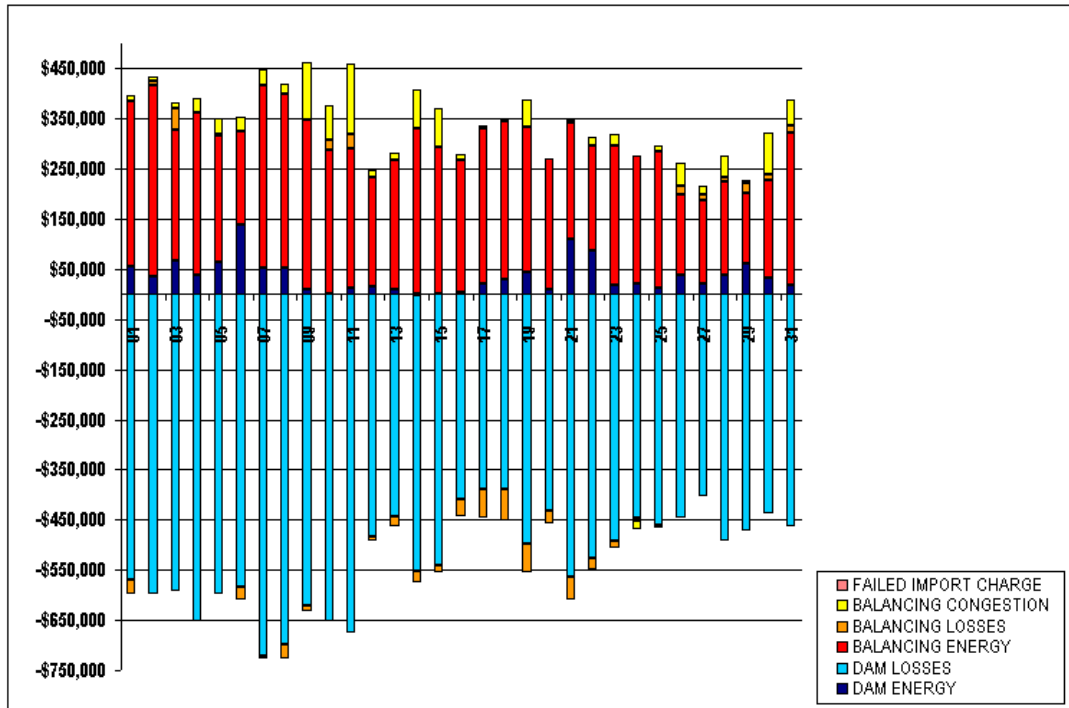
	MONDAY	TUESDAY	WEDNESDAY	THURSDAY	FRIDAY	SATURDAY	SUNDAY
		1	2	3	4	5	6
ENERGY		\$461.10	\$189.31	\$395.82	\$963.07	\$1,134.22	\$908.03
TRANSMISSION SERVICE		(\$166.31)	(\$220.19)	(\$635.87)	(\$313.30)	(\$110.71)	(\$117.63)
UPLIFT		(\$2,872.19)	\$49,754.98	(\$7,022.91)	\$11,759.92	\$13,382.28	(\$3,493.15)
RESIDUALS		\$363.82	(\$1,453.13)	(\$333.27)	\$2,172.82	(\$419.93)	(\$218.64)
ANCILLARY SERVICES		(\$2,171.77)	(\$1,050.29)	(\$1,211.94)	(\$1,892.40)	(\$958.36)	(\$1,219.60)
TCC		(\$47.25)	(\$73.37)	(\$260.14)	(\$148.38)	\$0.00	\$0.00
	7	8	9	10	11	12	13
ENERGY	\$114.25	\$83.74	\$39.24	\$37.78	\$158.30	\$181.94	\$0.12
TRANSMISSION SERVICE	(\$261.83)	(\$184.16)	(\$235.99)	(\$368.01)	(\$892.43)	(\$988.95)	(\$1,125.60)
UPLIFT	\$22,202.05	(\$14.12)	\$9,575.76	\$76,467.98	\$43,638.60	\$6,679.81	(\$7,584.34)
RESIDUALS	\$1,333.65	(\$977.00)	(\$338.38)	\$197.58	\$704.33	(\$593.93)	\$205.82
ANCILLARY SERVICES	(\$2,150.91)	(\$941.00)	(\$994.49)	(\$926.24)	\$1,174.24	(\$1,532.53)	(\$1,051.02)
TCC	(\$191.24)	(\$127.36)	(\$64.23)	(\$145.80)	(\$542.64)	\$58.37	\$83.20
	14	15	16	17	18	19	20
ENERGY	(\$0.19)	\$0.42	\$155.17	\$295.10	\$461.69	\$1,313.01	\$460.48
TRANSMISSION SERVICE	(\$577.95)	(\$744.81)	(\$711.35)	(\$1,258.43)	(\$1,065.93)	(\$203.49)	(\$4,513.01)
UPLIFT	\$3,570.53	(\$8,835.71)	(\$37,074.87)	(\$6,340.68)	\$2,460.98	(\$2,423.72)	\$1,487.75
RESIDUALS	\$483.20	(\$906.31)	(\$407.69)	\$514.13	(\$1,499.02)	(\$30.67)	\$94.41
ANCILLARY SERVICES	(\$175.96)	(\$1,541.01)	(\$1,126.15)	\$4,530.30	(\$1,803.62)	\$2,167.60	(\$468.73)
TCC	(\$322.95)	(\$621.66)	(\$569.06)	(\$975.34)	(\$828.70)	(\$88.63)	\$518.40
	21	22	23	24	25	26	27
ENERGY	\$582.69	\$6.84	\$73.42	\$2.44	\$91.44	\$408.35	(\$0.43)
TRANSMISSION SERVICE	(\$361.41)	(\$150.75)	(\$553.12)	(\$971.07)	(\$946.67)	(\$216.57)	(\$128.13)
UPLIFT	\$10,552.62	\$28,479.91	\$6,766.48	\$278.38	\$3,924.44	\$13,474.62	\$1,649.33
RESIDUALS	\$1,234.01	\$913.53	(\$748.88)	\$494.54	\$713.19	\$638.66	\$201.00
ANCILLARY SERVICES	(\$176.98)	(\$1,362.69)	(\$13,419.65)	(\$3,379.26)	(\$1,293.56)	(\$2,979.98)	(\$959.67)
TCC	\$0.00	(\$31.95)	(\$379.29)	(\$379.84)	(\$184.33)	(\$11.95)	(\$19.88)
	28	29	30	31			
ENERGY	(\$0.42)	\$487.17	\$916.95	\$382.86			
TRANSMISSION SERVICE	(\$261.43)	(\$172.44)	(\$325.14)	(\$417.26)			
UPLIFT	\$1,899.82	\$13,466.87	(\$3,094.54)	\$19,109.90			
RESIDUALS	\$709.07	\$873.00	(\$734.64)	\$193.82			
ANCILLARY SERVICES	(\$1,465.96)	(\$1,534.74)	(\$1,198.44)	(\$897.45)			
TCC	(\$47.52)	(\$15.87)	(\$216.43)	(\$159.13)			



SETTLEMENTS REPORT
 JANUARY 2002 CLOSEOUT SETTLEMENT
 DECEMBER 6, 2005

24-MONTH SETTLEMENT ADJUSTMENT MARKET RESIDUALS

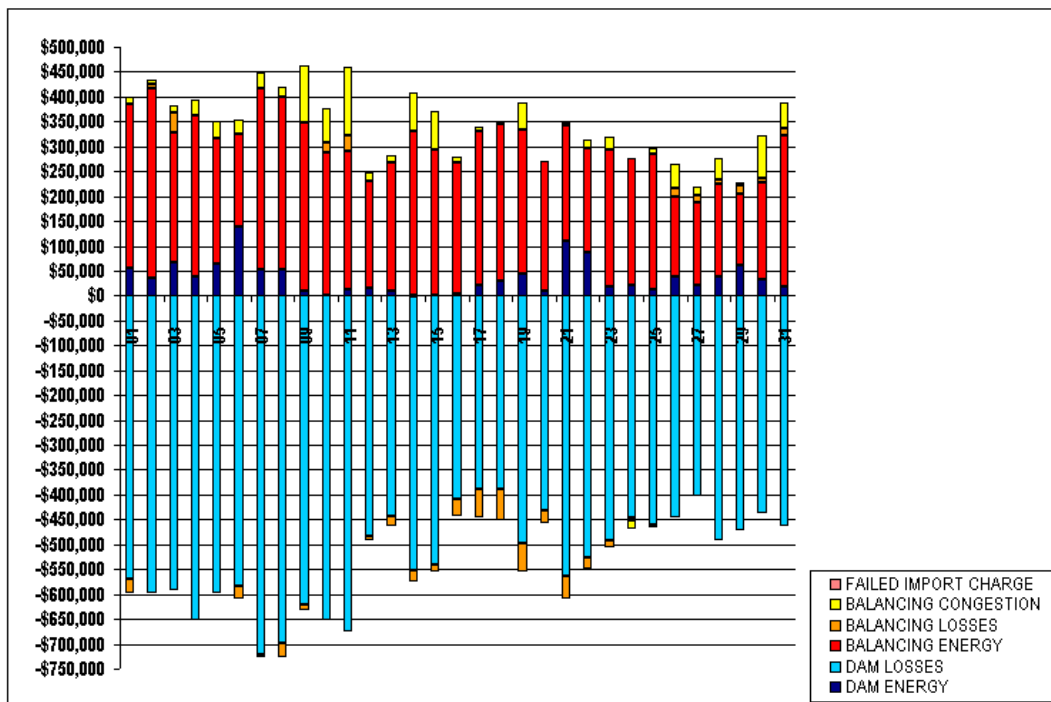
	MONDAY	TUESDAY	WEDNESDAY	THURSDAY	FRIDAY	SATURDAY	SUNDAY
		1	2	3	4	5	6
DAM ENERGY		\$54,876.63	\$35,846.23	\$66,864.58	\$37,906.31	\$64,028.38	\$139,474.78
DAM LOSSES		(\$568,672.86)	(\$598,384.58)	(\$591,504.69)	(\$653,516.66)	(\$597,045.53)	(\$583,194.16)
BALANCING ENERGY		\$331,166.58	\$380,717.57	\$261,298.55	\$323,386.06	\$253,105.18	\$184,686.07
BALANCING LOSSES		(\$29,496.76)	\$8,931.40	\$41,716.23	(\$312.53)	\$925.28	(\$26,495.24)
BALANCING CONGESTION		\$12,022.80	\$9,275.37	\$13,639.23	\$31,042.43	\$32,463.71	\$31,052.64
FAILED IMPORT CHARGE		\$0.00	\$0.00	\$0.00	\$0.00	\$0.00	\$0.00
	7	8	9	10	11	12	13
DAM ENERGY	\$54,067.72	\$53,753.66	\$8,714.60	\$2,493.76	\$13,249.80	\$16,609.83	\$9,317.54
DAM LOSSES	(\$722,164.44)	(\$697,120.95)	(\$620,823.42)	(\$653,444.43)	(\$676,551.88)	(\$483,814.27)	(\$444,178.89)
BALANCING ENERGY	\$361,580.66	\$345,763.93	\$340,082.74	\$285,559.96	\$276,993.68	\$215,607.03	\$257,812.44
BALANCING LOSSES	(\$3,962.94)	(\$30,743.18)	(\$12,556.90)	\$18,567.26	\$30,525.11	(\$9,044.50)	(\$20,152.77)
BALANCING CONGESTION	\$31,844.73	\$21,232.15	\$114,956.31	\$69,493.12	\$138,552.75	\$16,264.28	\$14,548.83
FAILED IMPORT CHARGE	\$0.00	\$0.00	\$0.00	\$0.00	\$0.00	\$0.00	\$0.00
	14	15	16	17	18	19	20
DAM ENERGY	(\$388.63)	\$954.51	\$4,986.76	\$20,290.93	\$28,771.07	\$44,657.69	\$8,910.72
DAM LOSSES	(\$553,179.36)	(\$541,090.63)	(\$408,783.81)	(\$389,067.95)	(\$388,747.15)	(\$496,988.34)	(\$432,559.94)
BALANCING ENERGY	\$329,946.49	\$292,816.03	\$264,214.33	\$310,988.15	\$317,535.00	\$289,460.70	\$261,191.83
BALANCING LOSSES	(\$22,801.91)	(\$13,184.25)	(\$33,945.04)	(\$57,938.48)	(\$63,523.18)	(\$58,543.45)	(\$26,362.74)
BALANCING CONGESTION	\$78,006.67	\$78,373.71	\$9,892.70	\$6,655.73	\$3,359.54	\$54,759.98	\$1,223.86
FAILED IMPORT CHARGE	\$0.00	\$0.00	\$0.00	\$0.00	\$0.00	\$0.00	\$0.00
	21	22	23	24	25	26	27
DAM ENERGY	\$108,972.42	\$88,120.03	\$19,119.13	\$21,740.52	\$12,043.25	\$37,719.83	\$22,054.38
DAM LOSSES	(\$564,401.08)	(\$525,887.75)	(\$490,667.56)	(\$447,457.00)	(\$459,398.03)	(\$446,004.62)	(\$403,470.97)
BALANCING ENERGY	\$232,547.47	\$208,144.86	\$276,045.76	\$254,313.68	\$272,151.80	\$162,008.52	\$164,445.76
BALANCING LOSSES	(\$44,748.66)	(\$23,671.56)	(\$16,226.15)	(\$3,766.16)	(\$5,759.17)	\$17,030.63	\$13,867.48
BALANCING CONGESTION	\$5,468.37	\$17,252.11	\$25,565.53	(\$17,334.93)	\$11,539.56	\$46,167.36	\$17,110.65
FAILED IMPORT CHARGE	\$0.00	\$0.00	\$0.00	\$0.00	\$0.00	\$0.00	\$0.00
	28	29	30	31			
DAM ENERGY	\$39,513.51	\$60,817.01	\$32,379.37	\$19,035.59			
DAM LOSSES	(\$493,266.72)	(\$471,606.42)	(\$436,136.25)	(\$462,780.69)			
BALANCING ENERGY	\$184,024.74	\$142,179.87	\$195,301.97	\$304,235.07			
BALANCING LOSSES	\$9,161.15	\$19,293.22	\$10,000.71	\$13,753.62			
BALANCING CONGESTION	\$43,789.45	\$5,010.48	\$85,006.14	\$52,126.72			
FAILED IMPORT CHARGE	\$0.00	\$0.00	\$0.00	\$0.00			



SETTLEMENTS REPORT
 JANUARY 2002 CLOSEOUT SETTLEMENT
 DECEMBER 6, 2005

CLOSEOUT SETTLEMENT MARKET RESIDUALS ANALYSIS

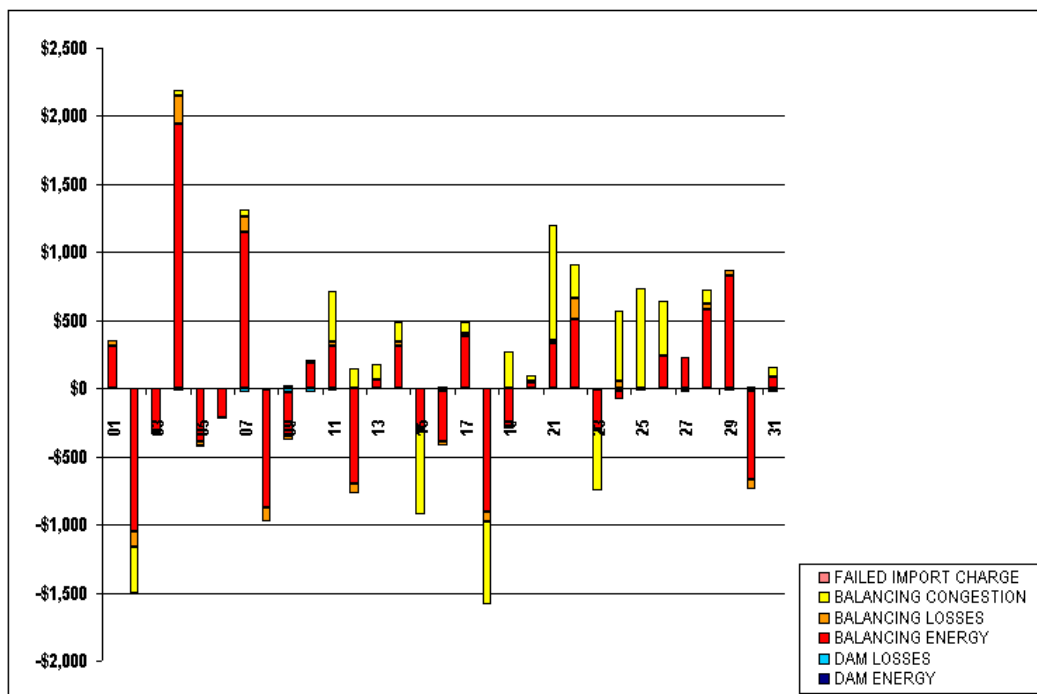
	MONDAY	TUESDAY	WEDNESDAY	THURSDAY	FRIDAY	SATURDAY	SUNDAY
		1	2	3	4	5	6
DAM ENERGY		\$64,876.63	\$35,846.22	\$66,864.59	\$37,906.72	\$64,028.38	\$139,474.78
DAM LOSSES		(\$668,672.86)	(\$598,387.34)	(\$591,507.13)	(\$653,533.94)	(\$597,045.53)	(\$583,194.16)
BALANCING ENERGY		\$331,480.79	\$379,674.09	\$260,981.14	\$325,325.87	\$252,715.43	\$184,474.05
BALANCING LOSSES		(\$29,461.90)	\$8,817.09	\$41,702.26	(\$101.09)	\$889.42	(\$26,505.08)
BALANCING CONGESTION		\$12,027.47	\$8,930.17	\$13,639.49	\$31,079.38	\$32,463.06	\$31,059.52
FAILED IMPORT CHARGE		\$0.00	\$0.00	\$0.00	\$0.00	\$0.00	\$0.00
	7	8	9	10	11	12	13
DAM ENERGY	\$54,069.42	\$53,754.31	\$8,714.64	\$2,493.79	\$13,249.99	\$16,609.83	\$9,317.54
DAM LOSSES	(\$722,193.07)	(\$697,127.28)	(\$620,848.82)	(\$653,471.43)	(\$676,567.41)	(\$483,814.27)	(\$444,178.89)
BALANCING ENERGY	\$362,722.16	\$344,894.09	\$339,764.15	\$285,753.08	\$277,305.08	\$214,902.98	\$257,872.82
BALANCING LOSSES	(\$3,847.17)	(\$30,847.72)	(\$12,588.65)	\$18,583.17	\$30,553.36	(\$9,112.54)	(\$20,147.57)
BALANCING CONGESTION	\$31,899.35	\$21,234.88	\$114,975.02	\$69,496.50	\$138,932.45	\$16,410.48	\$14,659.32
FAILED IMPORT CHARGE	\$0.00	\$0.00	\$0.00	\$0.00	\$0.00	\$0.00	\$0.00
	14	15	16	17	18	19	20
DAM ENERGY	(\$388.63)	\$954.51	\$4,986.93	\$20,290.99	\$28,771.07	\$44,657.69	\$8,910.72
DAM LOSSES	(\$553,179.36)	(\$541,090.63)	(\$408,798.33)	(\$389,073.34)	(\$388,748.15)	(\$496,988.34)	(\$432,559.94)
BALANCING ENERGY	\$330,261.68	\$292,525.70	\$263,834.40	\$311,371.79	\$316,631.69	\$289,189.21	\$261,237.98
BALANCING LOSSES	(\$22,775.96)	(\$13,201.19)	(\$33,973.65)	(\$57,917.66)	(\$63,593.73)	(\$58,570.00)	(\$26,350.43)
BALANCING CONGESTION	\$78,148.67	\$77,752.48	\$9,906.69	\$6,742.75	\$2,752.30	\$55,027.31	\$1,259.73
FAILED IMPORT CHARGE	\$0.00	\$0.00	\$0.00	\$0.00	\$0.00	\$0.00	\$0.00
	21	22	23	24	25	26	27
DAM ENERGY	\$108,972.42	\$88,120.03	\$19,119.20	\$21,741.63	\$12,043.42	\$37,719.83	\$22,054.38
DAM LOSSES	(\$564,401.08)	(\$525,887.75)	(\$490,676.17)	(\$447,477.14)	(\$459,408.73)	(\$446,004.62)	(\$403,470.97)
BALANCING ENERGY	\$232,878.30	\$208,648.91	\$275,757.69	\$254,257.53	\$272,142.65	\$162,250.77	\$164,673.41
BALANCING LOSSES	(\$44,721.18)	(\$23,510.64)	(\$16,239.89)	(\$3,717.58)	(\$5,752.43)	\$17,027.11	\$13,861.55
BALANCING CONGESTION	\$6,314.49	\$17,499.64	\$25,125.41	(\$16,813.93)	\$12,263.36	\$46,563.62	\$17,091.32
FAILED IMPORT CHARGE	\$0.00	\$0.00	\$0.00	\$0.00	\$0.00	\$0.00	\$0.00
	28	29	30	31			
DAM ENERGY	\$39,514.37	\$60,818.38	\$32,379.98	\$19,036.14			
DAM LOSSES	(\$493,278.38)	(\$471,621.00)	(\$436,154.59)	(\$462,799.73)			
BALANCING ENERGY	\$184,603.13	\$143,004.74	\$194,654.92	\$304,323.96			
BALANCING LOSSES	\$9,200.75	\$19,334.37	\$9,922.12	\$13,741.18			
BALANCING CONGESTION	\$43,890.30	\$5,010.62	\$85,013.18	\$52,196.80			
FAILED IMPORT CHARGE	\$0.00	\$0.00	\$0.00	\$0.00			



SETTLEMENTS REPORT
 JANUARY 2002 CLOSEOUT SETTLEMENT
 DECEMBER 6, 2005

CLOSEOUT SETTLEMENT MARKET RESIDUALS DELTA ANALYSIS

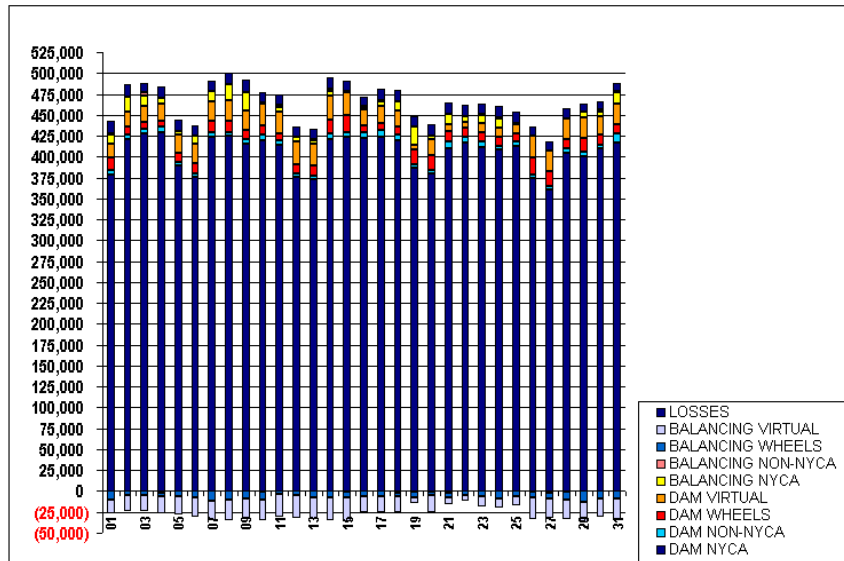
	MONDAY	TUESDAY	WEDNESDAY	THURSDAY	FRIDAY	SATURDAY	SUNDAY
		1	2	3	4	5	6
DAM ENERGY		\$0.00	(\$0.01)	\$0.01	\$0.41	\$0.00	\$0.00
DAM LOSSES		\$0.00	(\$2.76)	(\$2.44)	(\$17.23)	\$0.00	\$0.00
BALANCING ENERGY		\$314.21	(\$1,043.48)	(\$317.41)	\$1,939.81	(\$389.75)	(\$212.02)
BALANCING LOSSES		\$34.86	(\$114.31)	(\$13.97)	\$211.44	(\$35.86)	(\$9.84)
BALANCING CONGESTION		\$4.67	(\$345.20)	\$0.26	\$36.95	(\$0.65)	\$6.88
FAILED IMPORT CHARGE		\$0.00	\$0.00	\$0.00	\$0.00	\$0.00	\$0.00
	7	8	9	10	11	12	13
DAM ENERGY	\$1.70	\$0.65	\$0.04	\$0.03	\$0.19	\$0.00	\$0.00
DAM LOSSES	(\$28.63)	(\$6.33)	(\$25.40)	(\$27.00)	(\$15.53)	\$0.00	\$0.00
BALANCING ENERGY	\$1,141.50	(\$869.84)	(\$318.59)	\$193.12	\$311.40	(\$704.05)	\$60.38
BALANCING LOSSES	\$115.77	(\$104.54)	(\$31.75)	\$15.91	\$28.25	(\$68.04)	\$5.20
BALANCING CONGESTION	\$54.62	\$2.73	\$18.71	\$3.38	\$379.70	\$146.20	\$110.49
FAILED IMPORT CHARGE	\$0.00	\$0.00	\$0.00	\$0.00	\$0.00	\$0.00	\$0.00
	14	15	16	17	18	19	20
DAM ENERGY	\$0.00	\$0.00	\$0.17	\$0.06	\$0.00	\$0.00	\$0.00
DAM LOSSES	\$0.00	\$0.00	(\$14.52)	(\$5.39)	(\$1.00)	\$0.00	\$0.00
BALANCING ENERGY	\$315.19	(\$290.33)	(\$379.93)	\$383.64	(\$903.31)	(\$271.49)	\$46.15
BALANCING LOSSES	\$25.95	(\$16.94)	(\$28.61)	\$20.82	(\$70.55)	(\$26.55)	\$12.31
BALANCING CONGESTION	\$142.00	(\$621.23)	\$13.99	\$87.02	(\$607.24)	\$267.33	\$35.87
FAILED IMPORT CHARGE	\$0.00	\$0.00	\$0.00	\$0.00	\$0.00	\$0.00	\$0.00
	21	22	23	24	25	26	27
DAM ENERGY	\$0.00	\$0.00	\$0.07	\$1.11	\$0.17	\$0.00	\$0.00
DAM LOSSES	\$0.00	\$0.00	(\$8.61)	(\$20.14)	(\$10.70)	\$0.00	\$0.00
BALANCING ENERGY	\$330.83	\$504.05	(\$288.07)	(\$56.15)	(\$9.15)	\$242.25	\$227.65
BALANCING LOSSES	\$27.48	\$160.92	(\$13.74)	\$48.58	\$6.74	(\$3.52)	(\$5.93)
BALANCING CONGESTION	\$846.12	\$247.53	(\$440.12)	\$521.00	\$723.80	\$396.26	(\$19.33)
FAILED IMPORT CHARGE	\$0.00	\$0.00	\$0.00	\$0.00	\$0.00	\$0.00	\$0.00
	28	29	30	31			
DAM ENERGY	\$0.86	\$1.37	\$0.61	\$0.55			
DAM LOSSES	(\$11.66)	(\$14.58)	(\$18.34)	(\$19.04)			
BALANCING ENERGY	\$578.39	\$824.87	(\$647.05)	\$88.89			
BALANCING LOSSES	\$39.60	\$41.15	(\$78.59)	(\$12.44)			
BALANCING CONGESTION	\$100.85	\$0.14	\$7.04	\$70.08			
FAILED IMPORT CHARGE	\$0.00	\$0.00	\$0.00	\$0.00			



SETTLEMENTS REPORT
 JANUARY 2002 CLOSEOUT SETTLEMENT
 DECEMBER 6, 2005

24-MONTH SETTLEMENT ADJUSTMENT MARKET WITHDRAWALS ANALYSIS

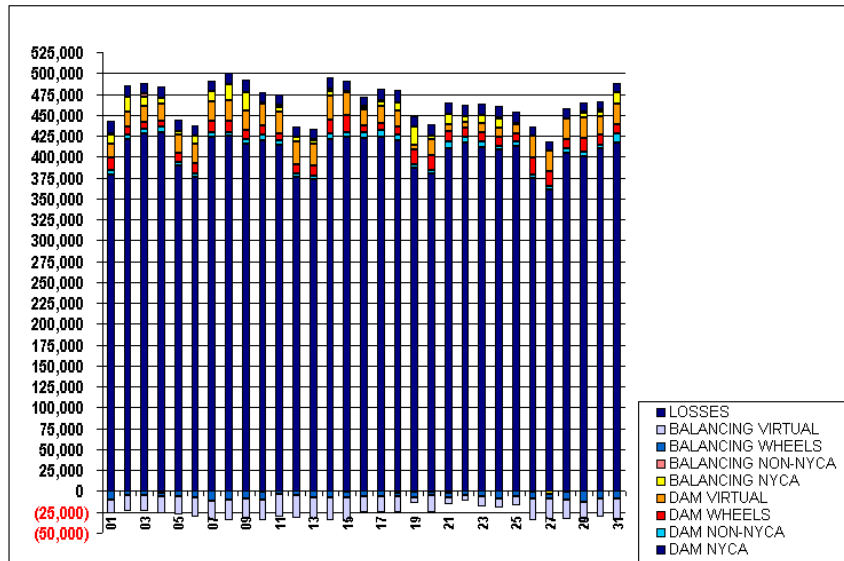
	MONDAY	TUESDAY	WEDNESDAY	THURSDAY	FRIDAY	SATURDAY	SUNDAY
		1	2	3	4	5	6
DAM NYCA		379,190	421,193	427,748	429,090	389,041	375,487
DAM NON-NYCA		4,241	5,449	5,410	7,279	4,181	4,001
DAM WHEELS		15,830	9,093	8,856	6,571	11,160	12,900
DAM VIRTUAL		16,337	18,248	18,535	20,679	22,104	23,384
BALANCING NYCA		10,797	17,309	11,961	6,386	3,806	8,905
BALANCING NON-NYCA		1,038	586	3,913	(1,710)	825	100
BALANCING WHEELS		(10,430)	(6,305)	(6,400)	(4,000)	(6,360)	(8,100)
BALANCING VIRTUAL		(16,337)	(18,248)	(18,535)	(20,679)	(22,104)	(23,384)
UFELOSSES		15,278	14,130	11,881	13,260	12,758	12,298
		7	8	9	10	11	12
DAM NYCA	424,018	424,461	415,445	419,924	414,224	376,294	372,493
DAM NON-NYCA	4,340	4,229	5,817	7,160	4,776	4,232	4,050
DAM WHEELS	13,456	14,382	10,096	10,225	8,192	10,500	12,625
DAM VIRTUAL	23,067	24,423	23,845	25,731	26,712	27,463	26,642
BALANCING NYCA	12,653	18,844	22,302	1,441	5,260	4,889	4,158
BALANCING NON-NYCA	75	100	150	(1,253)	2,598	25	1,050
BALANCING WHEELS	(11,856)	(9,338)	(6,495)	(6,625)	(6,500)	(4,800)	(7,955)
BALANCING VIRTUAL	(23,067)	(24,423)	(23,845)	(25,731)	(26,712)	(27,463)	(26,642)
UFELOSSES	12,814	14,480	14,190	13,243	12,982	11,959	12,244
		14	15	16	17	18	19
DAM NYCA	420,591	423,206	422,513	424,102	419,238	386,084	380,065
DAM NON-NYCA	6,975	6,280	6,766	7,210	7,477	4,581	4,400
DAM WHEELS	16,498	19,725	7,800	9,208	9,348	17,350	16,800
DAM VIRTUAL	28,365	27,993	18,796	19,823	19,130	6,250	20,005
BALANCING NYCA	6,386	876	3,500	6,452	10,450	21,948	4,392
BALANCING NON-NYCA	2,364	(617)	975	991	(1,650)	(615)	(215)
BALANCING WHEELS	(6,898)	(7,233)	(6,900)	(6,072)	(4,418)	(7,342)	(4,800)
BALANCING VIRTUAL	(28,365)	(27,993)	(18,796)	(19,823)	(19,130)	(6,250)	(20,005)
UFELOSSES	13,377	12,458	11,281	13,104	13,606	11,679	12,557
		21	22	23	24	25	26
DAM NYCA	410,175	416,924	411,719	408,528	412,966	374,539	361,057
DAM NON-NYCA	8,585	6,082	6,066	4,809	4,777	4,180	4,033
DAM WHEELS	11,600	11,488	11,202	9,766	9,690	20,350	17,900
DAM VIRTUAL	8,138	6,965	11,096	11,858	11,468	26,103	24,157
BALANCING NYCA	13,252	7,956	9,966	11,257	1,303	(726)	(2,547)
BALANCING NON-NYCA	(2,300)	100	500	1,226	73	0	113
BALANCING WHEELS	(4,827)	(4,800)	(6,800)	(8,616)	(6,294)	(7,280)	(6,040)
BALANCING VIRTUAL	(8,138)	(6,965)	(11,096)	(11,858)	(11,468)	(26,103)	(24,157)
UFELOSSES	13,420	12,938	12,965	12,672	12,987	11,164	10,630
		28	29	30	31		
DAM NYCA	404,389	400,415	409,449	417,209			
DAM NON-NYCA	4,983	4,881	5,242	10,809			
DAM WHEELS	11,889	16,533	11,207	11,373			
DAM VIRTUAL	23,769	24,600	21,967	24,233			
BALANCING NYCA	(903)	6,776	5,651	13,466			
BALANCING NON-NYCA	800	1,081	2,845	816			
BALANCING WHEELS	(9,062)	(12,475)	(9,107)	(9,273)			
BALANCING VIRTUAL	(23,769)	(24,600)	(21,967)	(24,233)			
UFELOSSES	11,456	9,766	9,384	10,751			



SETTLEMENTS REPORT
 JANUARY 2002 CLOSEOUT SETTLEMENT
 DECEMBER 6, 2005

CLOSEOUT SETTLEMENT MARKET WITHDRAWALS ANALYSIS

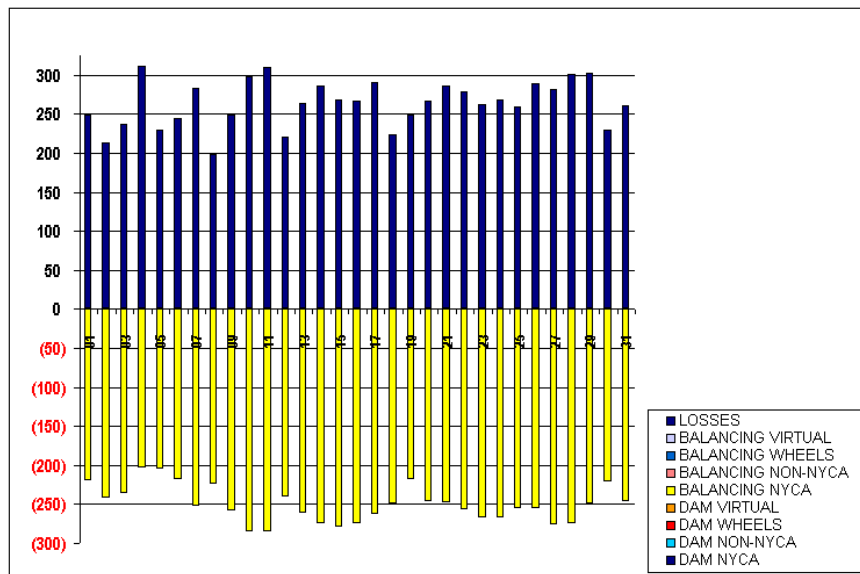
	MONDAY	TUESDAY	WEDNESDAY	THURSDAY	FRIDAY	SATURDAY	SUNDAY
		1	2	3	4	5	6
DAM NYCA		379,190	421,193	427,748	429,090	389,041	375,487
DAM NON-NYCA		4,241	5,449	5,410	7,279	4,181	4,001
DAM WHEELS		15,830	9,093	8,856	6,571	11,160	12,900
DAM VIRTUAL		16,337	18,248	18,535	20,679	22,104	23,384
BALANCING NYCA		10,578	17,066	11,725	6,182	3,601	8,687
BALANCING NON-NYCA		1,038	586	3,913	(1,719)	825	100
BALANCING WHEELS		(10,430)	(6,305)	(6,400)	(4,000)	(6,360)	(8,100)
BALANCING VIRTUAL		(16,337)	(18,248)	(18,535)	(20,679)	(22,104)	(23,384)
UFELOSSES		15,827	14,343	12,119	13,572	12,388	12,542
	7	8	9	10	11	12	13
DAM NYCA	424,018	424,461	415,445	419,924	414,224	376,294	372,493
DAM NON-NYCA	4,940	4,229	5,817	7,160	4,776	4,232	4,050
DAM WHEELS	13,456	14,382	10,096	10,225	8,192	10,500	12,625
DAM VIRTUAL	23,067	24,423	23,845	25,731	26,712	27,453	26,642
BALANCING NYCA	12,301	18,619	22,043	1,156	4,974	4,649	3,897
BALANCING NON-NYCA	75	100	150	(1,253)	2,598	25	1,050
BALANCING WHEELS	(11,856)	(9,338)	(6,495)	(6,625)	(6,500)	(4,800)	(7,955)
BALANCING VIRTUAL	(23,067)	(24,423)	(23,845)	(25,731)	(26,712)	(27,453)	(26,642)
UFELOSSES	13,097	14,678	14,439	13,540	13,292	12,179	12,508
	14	15	16	17	18	19	20
DAM NYCA	420,591	423,206	422,513	424,102	419,238	396,084	380,065
DAM NON-NYCA	6,975	6,280	6,766	7,210	7,477	4,581	4,400
DAM WHEELS	16,498	19,725	7,800	9,208	9,348	17,350	16,800
DAM VIRTUAL	28,365	27,993	18,796	19,823	19,130	6,250	20,005
BALANCING NYCA	6,111	596	3,226	6,189	10,200	21,730	4,146
BALANCING NON-NYCA	2,364	(617)	975	991	(1,650)	(815)	(215)
BALANCING WHEELS	(6,898)	(7,233)	(6,900)	(6,072)	(4,418)	(7,342)	(4,800)
BALANCING VIRTUAL	(28,365)	(27,993)	(18,796)	(19,823)	(19,130)	(6,250)	(20,005)
UFELOSSES	13,663	12,727	11,548	13,395	13,830	11,928	12,824
	21	22	23	24	25	26	27
DAM NYCA	410,175	416,924	411,719	408,528	412,968	374,539	361,057
DAM NON-NYCA	8,585	6,082	6,066	4,809	4,777	4,180	4,033
DAM WHEELS	11,500	11,488	11,202	9,766	9,690	20,350	17,900
DAM VIRTUAL	8,138	6,965	11,096	11,858	11,468	26,103	24,157
BALANCING NYCA	13,004	6,800	9,698	10,989	1,047	(980)	(2,823)
BALANCING NON-NYCA	(2,300)	100	500	1,226	73	0	113
BALANCING WHEELS	(4,827)	(4,800)	(6,800)	(8,616)	(6,294)	(7,280)	(6,040)
BALANCING VIRTUAL	(8,138)	(6,965)	(11,096)	(11,858)	(11,468)	(26,103)	(24,157)
UFELOSSES	13,706	13,217	13,228	12,941	13,247	11,453	10,912
	28	29	30	31			
DAM NYCA	404,389	400,415	409,449	417,209			
DAM NON-NYCA	4,983	4,881	5,242	10,809			
DAM WHEELS	11,889	16,533	11,207	11,373			
DAM VIRTUAL	23,769	24,600	21,967	24,233			
BALANCING NYCA	(1,178)	6,526	5,430	13,220			
BALANCING NON-NYCA	800	1,081	2,845	816			
BALANCING WHEELS	(9,062)	(12,475)	(9,107)	(9,273)			
BALANCING VIRTUAL	(23,769)	(24,600)	(21,967)	(24,233)			
UFELOSSES	11,758	10,068	9,615	11,012			



SETTLEMENTS REPORT
 JANUARY 2002 CLOSEOUT SETTLEMENT
 DECEMBER 6, 2005

CLOSEOUT SETTLEMENT MARKET WITHDRAWALS DELTA ANALYSIS

	HONDAY	TUESDAY	WEDNESDAY	THURSDAY	FRIDAY	SATURDAY	SUNDAY
		1	2	3	4	5	6
DAM NYCA		0	0	0	0	0	0
DAM NON-NYCA		0	0	0	0	0	0
DAM WHEELS		0	0	0	0	0	0
DAM VIRTUAL		0	0	0	0	0	0
BALANCING NYCA		(219)	(242)	(236)	(204)	(205)	(218)
BALANCING NON-NYCA		0	0	0	0	0	0
BALANCING WHEELS		0	0	0	0	0	0
BALANCING VIRTUAL		0	0	0	0	0	0
UFE/LOSSES		249	214	238	312	230	245
	7	8	9	10	11	12	13
DAM NYCA	0	0	0	0	0	0	0
DAM NON-NYCA	0	0	0	0	0	0	0
DAM WHEELS	0	0	0	0	0	0	0
DAM VIRTUAL	0	0	0	0	0	0	0
BALANCING NYCA	(252)	(225)	(258)	(285)	(285)	(240)	(252)
BALANCING NON-NYCA	0	0	0	0	0	0	0
BALANCING WHEELS	0	0	0	0	0	0	0
BALANCING VIRTUAL	0	0	0	0	0	0	0
UFE/LOSSES	283	199	249	298	310	220	264
	14	15	16	17	18	19	20
DAM NYCA	0	0	0	0	0	0	0
DAM NON-NYCA	0	0	0	0	0	0	0
DAM WHEELS	0	0	0	0	0	0	0
DAM VIRTUAL	0	0	0	0	0	0	0
BALANCING NYCA	(275)	(279)	(274)	(263)	(250)	(219)	(246)
BALANCING NON-NYCA	0	0	0	0	0	0	0
BALANCING WHEELS	0	0	0	0	0	0	0
BALANCING VIRTUAL	0	0	0	0	0	0	0
UFE/LOSSES	287	269	267	291	224	249	267
	21	22	23	24	25	26	27
DAM NYCA	0	0	0	0	0	0	0
DAM NON-NYCA	0	0	0	0	0	0	0
DAM WHEELS	0	0	0	0	0	0	0
DAM VIRTUAL	0	0	0	0	0	0	0
BALANCING NYCA	(248)	(256)	(268)	(267)	(256)	(255)	(276)
BALANCING NON-NYCA	0	0	0	0	0	0	0
BALANCING WHEELS	0	0	0	0	0	0	0
BALANCING VIRTUAL	0	0	0	0	0	0	0
UFE/LOSSES	286	279	262	269	260	289	282
	28	29	30	31			
DAM NYCA	0	0	0	0			
DAM NON-NYCA	0	0	0	0			
DAM WHEELS	0	0	0	0			
DAM VIRTUAL	0	0	0	0			
BALANCING NYCA	(275)	(250)	(221)	(247)			
BALANCING NON-NYCA	0	0	0	0			
BALANCING WHEELS	0	0	0	0			
BALANCING VIRTUAL	0	0	0	0			
UFE/LOSSES	302	303	230	261			

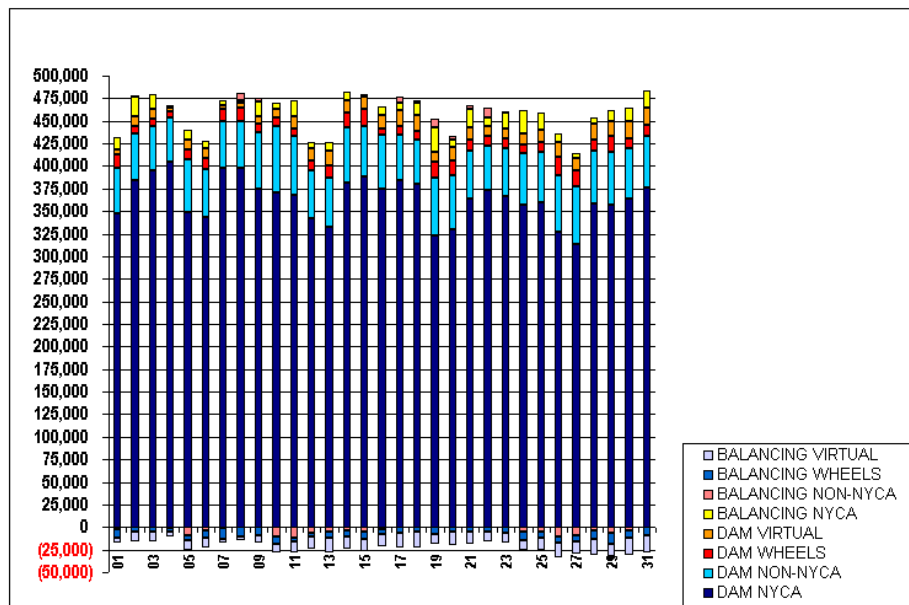


FOR DISCUSSION PURPOSES ONLY

SETTLEMENTS REPORT
 JANUARY 2002 CLOSEOUT SETTLEMENT
 DECEMBER 6, 2005

24-MONTH SETTLEMENT ADJUSTMENT MARKET SUPPLY ANALYSIS

	MONDAY	TUESDAY	WEDNESDAY	THURSDAY	FRIDAY	SATURDAY	SUNDAY
		1	2	3	4	5	6
DAM NYCA		347,966	384,186	394,827	405,265	349,181	343,114
DAM NON-NYCA		49,543	51,275	48,711	48,043	58,086	53,065
DAM WHEELS		15,830	9,093	8,856	6,571	11,160	12,900
DAM VIRTUAL		4,650	10,500	10,500	4,794	10,161	11,050
BALANCING NYCA		14,606	22,089	16,140	1,979	11,337	7,895
BALANCING NON-NYCA		(2,021)	441	660	(1,632)	(8,693)	(3,883)
BALANCING WHEELS		(10,430)	(5,305)	(5,400)	(4,000)	(6,360)	(8,100)
BALANCING VIRTUAL		(4,650)	(10,500)	(10,500)	(4,794)	(10,161)	(11,050)
	7	8	9	10	11	12	13
DAM NYCA	397,990	398,207	374,922	370,406	367,800	341,743	332,485
DAM NON-NYCA	51,195	51,792	62,042	73,270	65,701	53,962	54,835
DAM WHEELS	13,456	14,392	10,095	10,225	8,192	10,500	12,625
DAM VIRTUAL	4,600	5,129	8,560	9,269	12,780	12,978	16,340
BALANCING NYCA	5,531	3,549	15,549	6,927	18,531	7,296	10,881
BALANCING NON-NYCA	(1,166)	8,190	4,816	(10,389)	(12,192)	(6,077)	(5,205)
BALANCING WHEELS	(11,856)	(9,338)	(8,495)	(8,625)	(8,500)	(4,800)	(7,055)
BALANCING VIRTUAL	(4,600)	(5,129)	(8,560)	(9,269)	(12,780)	(12,978)	(16,340)
	14	15	16	17	18	19	20
DAM NYCA	382,112	387,895	374,831	383,972	380,643	323,695	329,516
DAM NON-NYCA	60,323	55,880	59,155	50,875	48,682	63,665	59,726
DAM WHEELS	16,498	19,725	7,800	9,208	9,348	17,350	16,800
DAM VIRTUAL	13,490	13,840	14,303	17,230	17,724	11,338	15,574
BALANCING NYCA	10,172	2,098	10,495	8,759	13,265	27,282	7,207
BALANCING NON-NYCA	(8,964)	(5,420)	(1,870)	6,178	3,680	8,685	4,449
BALANCING WHEELS	(6,898)	(7,233)	(5,900)	(6,072)	(4,418)	(7,342)	(4,800)
BALANCING VIRTUAL	(13,490)	(13,840)	(14,303)	(17,230)	(17,724)	(11,338)	(15,574)
	21	22	23	24	25	26	27
DAM NYCA	364,358	373,302	366,242	356,866	360,454	326,473	313,575
DAM NON-NYCA	53,085	49,045	53,227	57,786	55,790	63,762	63,476
DAM WHEELS	11,500	11,488	11,202	9,766	9,690	20,350	17,900
DAM VIRTUAL	13,672	10,875	10,166	11,645	13,561	16,423	13,338
BALANCING NYCA	20,527	8,764	17,970	26,410	19,233	8,976	5,721
BALANCING NON-NYCA	4,863	11,214	1,128	(5,420)	(5,580)	(10,053)	(9,549)
BALANCING WHEELS	(4,827)	(4,800)	(6,300)	(6,616)	(6,294)	(7,280)	(6,040)
BALANCING VIRTUAL	(13,672)	(10,875)	(10,166)	(11,645)	(13,561)	(16,423)	(13,338)
	28	29	30	31			
DAM NYCA	358,026	356,966	364,286	376,710			
DAM NON-NYCA	59,446	59,271	55,296	56,894			
DAM WHEELS	11,889	16,533	11,207	11,373			
DAM VIRTUAL	17,550	16,620	18,800	19,533			
BALANCING NYCA	7,027	12,469	15,523	19,101			
BALANCING NON-NYCA	(8,773)	(5,787)	(3,384)	247			
BALANCING WHEELS	(9,062)	(12,475)	(9,107)	(9,273)			
BALANCING VIRTUAL	(17,550)	(16,620)	(18,800)	(19,533)			

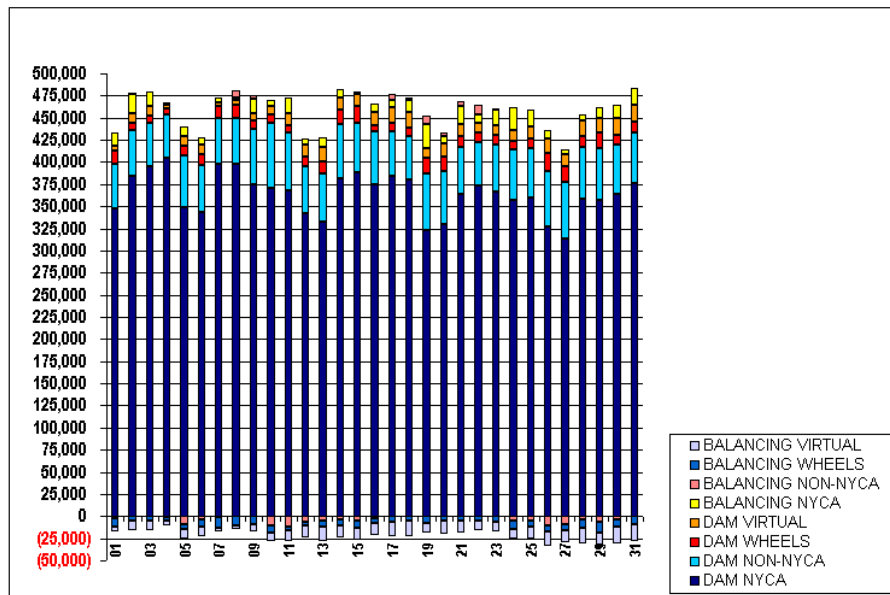


FOR DISCUSSION PURPOSES ONLY

SETTLEMENTS REPORT
 JANUARY 2002 CLOSEOUT SETTLEMENT
 DECEMBER 6, 2005

CLOSEOUT SETTLEMENT MARKET SUPPLY ANALYSIS

	MONDAY	TUESDAY	WEDNESDAY	THURSDAY	FRIDAY	SATURDAY	SUNDAY
		1	2	3	4	5	6
DAM NYCA		347,966	384,186	394,827	405,265	349,181	343,114
DAM NON-NYCA		49,543	51,275	48,711	48,043	58,086	53,065
DAM WHEELS		15,830	9,093	8,866	6,571	11,160	12,900
DAM VIRTUAL		4,660	10,500	10,500	4,794	10,161	11,050
BALANCING NYCA		14,635	22,061	16,142	2,087	11,362	7,922
BALANCING NON-NYCA		(2,021)	441	660	(1,632)	(8,635)	(6,883)
BALANCING WHEELS		(10,430)	(5,305)	(5,400)	(4,000)	(6,360)	(8,100)
BALANCING VIRTUAL		(4,650)	(10,500)	(10,500)	(4,794)	(10,161)	(11,050)
	7	8	9	10	11	12	13
DAM NYCA	397,990	398,207	374,922	370,406	367,800	341,743	332,485
DAM NON-NYCA	51,195	51,792	62,042	73,270	65,701	53,962	54,835
DAM WHEELS	13,456	14,382	10,095	10,225	8,192	10,500	12,625
DAM VIRTUAL	4,600	5,129	8,550	9,269	12,780	12,978	16,340
BALANCING NYCA	5,562	3,523	15,539	6,940	13,555	7,276	10,883
BALANCING NON-NYCA	(1,166)	8,190	4,816	(10,389)	(12,192)	(6,077)	(6,205)
BALANCING WHEELS	(11,855)	(9,338)	(8,495)	(8,625)	(3,500)	(4,800)	(7,055)
BALANCING VIRTUAL	(4,600)	(6,129)	(8,550)	(9,269)	(12,780)	(12,978)	(16,340)
	14	15	16	17	18	19	20
DAM NYCA	382,112	387,895	374,831	383,972	380,643	323,695	329,516
DAM NON-NYCA	60,323	55,880	59,155	50,875	48,682	63,665	59,726
DAM WHEELS	16,498	19,725	7,800	9,208	9,348	17,350	16,800
DAM VIRTUAL	13,490	13,840	14,303	17,230	17,724	11,338	15,574
BALANCING NYCA	10,134	2,087	10,487	8,787	13,239	27,313	7,228
BALANCING NON-NYCA	(3,964)	(5,420)	(1,870)	6,178	3,680	8,685	4,449
BALANCING WHEELS	(6,898)	(7,233)	(5,900)	(6,072)	(4,418)	(7,342)	(4,800)
BALANCING VIRTUAL	(13,490)	(13,840)	(14,303)	(17,230)	(17,724)	(11,338)	(15,574)
	21	22	23	24	25	26	27
DAM NYCA	364,358	373,302	366,242	356,866	360,454	326,473	313,575
DAM NON-NYCA	53,085	49,045	53,327	57,786	55,790	63,762	63,476
DAM WHEELS	11,500	11,488	11,202	9,766	9,690	20,350	17,900
DAM VIRTUAL	13,672	10,875	10,166	11,645	13,561	16,423	13,338
BALANCING NYCA	20,565	8,786	17,964	26,411	19,297	9,010	5,727
BALANCING NON-NYCA	4,863	11,214	1,128	(5,420)	(5,580)	(10,053)	(9,549)
BALANCING WHEELS	(4,827)	(4,800)	(6,800)	(8,515)	(6,294)	(7,280)	(6,040)
BALANCING VIRTUAL	(13,672)	(10,875)	(10,166)	(11,645)	(13,561)	(16,423)	(13,338)
	28	29	30	31			
DAM NYCA	358,026	356,966	364,286	376,710			
DAM NON-NYCA	59,446	59,271	55,296	56,894			
DAM WHEELS	11,889	16,533	11,207	11,373			
DAM VIRTUAL	17,550	16,620	18,800	19,533			
BALANCING NYCA	7,054	12,522	15,532	19,115			
BALANCING NON-NYCA	(3,773)	(6,787)	(3,384)	247			
BALANCING WHEELS	(9,062)	(12,475)	(9,107)	(9,273)			
BALANCING VIRTUAL	(17,550)	(16,620)	(18,800)	(19,533)			



SETTLEMENTS REPORT
 JANUARY 2002 CLOSEOUT SETTLEMENT
 DECEMBER 6, 2005

CLOSEOUT SETTLEMENT MARKET SUPPLY DELTA ANALYSIS

	MONDAY	TUESDAY	WEDNESDAY	THURSDAY	FRIDAY	SATURDAY	SUNDAY
		1	2	3	4	5	6
DAM NYCA		0	0	0	0	0	0
DAM NON-NYCA		0	0	0	0	0	0
DAM WHEELS		0	0	0	0	0	0
DAM VIRTUAL		0	0	0	0	0	0
BALANCING NYCA		29	(29)	2	108	25	27
BALANCING NON-NYCA		0	0	0	0	0	0
BALANCING WHEELS		0	0	0	0	0	0
BALANCING VIRTUAL		0	0	0	0	0	0
	7	8	9	10	11	12	13
DAM NYCA	0	0	0	0	0	0	0
DAM NON-NYCA	0	0	0	0	0	0	0
DAM WHEELS	0	0	0	0	0	0	0
DAM VIRTUAL	0	0	0	0	0	0	0
BALANCING NYCA	31	(26)	(10)	13	24	(20)	3
BALANCING NON-NYCA	0	0	0	0	0	0	0
BALANCING WHEELS	0	0	0	0	0	0	0
BALANCING VIRTUAL	0	0	0	0	0	0	0
	14	15	16	17	18	19	20
DAM NYCA	0	0	0	0	0	0	0
DAM NON-NYCA	0	0	0	0	0	0	0
DAM WHEELS	0	0	0	0	0	0	0
DAM VIRTUAL	0	0	0	0	0	0	0
BALANCING NYCA	12	(11)	(8)	28	(25)	31	21
BALANCING NON-NYCA	0	0	0	0	0	0	0
BALANCING WHEELS	0	0	0	0	0	0	0
BALANCING VIRTUAL	0	0	0	0	0	0	0
	21	22	23	24	25	26	27
DAM NYCA	0	0	0	0	0	0	0
DAM NON-NYCA	0	0	0	0	0	0	0
DAM WHEELS	0	0	0	0	0	0	0
DAM VIRTUAL	0	0	0	0	0	0	0
BALANCING NYCA	38	23	(6)	1	4	34	6
BALANCING NON-NYCA	0	0	0	0	0	0	0
BALANCING WHEELS	0	0	0	0	0	0	0
BALANCING VIRTUAL	0	0	0	0	0	0	0
	28	29	30	31			
DAM NYCA	0	0	0	0			
DAM NON-NYCA	0	0	0	0			
DAM WHEELS	0	0	0	0			
DAM VIRTUAL	0	0	0	0			
BALANCING NYCA	27	53	9	14			
BALANCING NON-NYCA	0	0	0	0			
BALANCING WHEELS	0	0	0	0			
BALANCING VIRTUAL	0	0	0	0			

