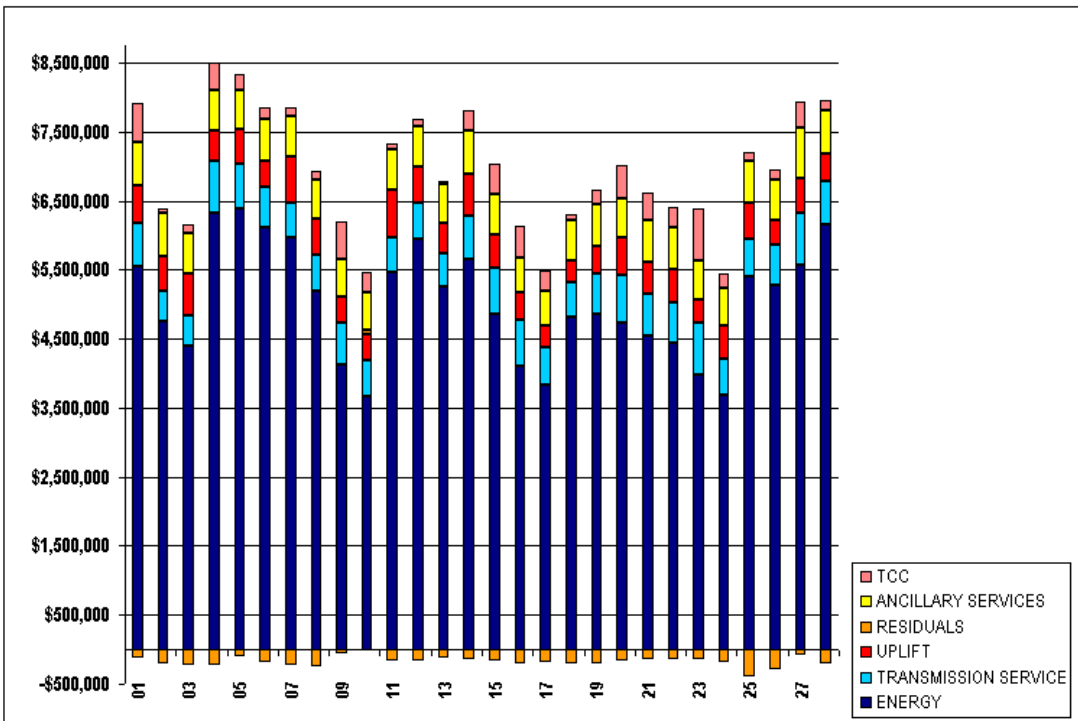


SETTLEMENTS REPORT  
 FEBRUARY 2002 CLOSEOUT SETTLEMENT  
 DECEMBER 6, 2005

**24-MONTH SETTLEMENT ADJUSTMENT MARKET COSTS**

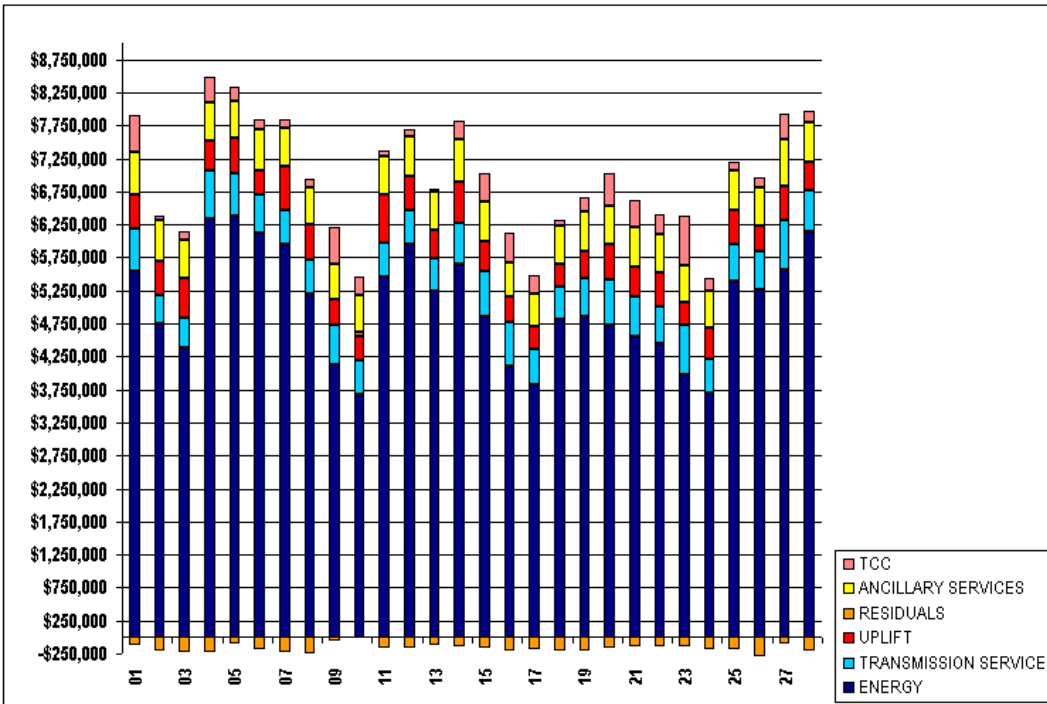
	MONDAY	TUESDAY	WEDNESDAY	THURSDAY	FRIDAY	SATURDAY	SUNDAY
					1	2	3
ENERGY					\$5,551,109.40	\$4,753,075.88	\$4,391,289.56
TRANSMISSION SERVICE					\$634,042.20	\$432,656.42	\$443,365.97
UPLIFT					\$527,892.17	\$506,653.50	\$603,636.55
RESIDUALS					(\$115,491.43)	(\$213,305.37)	(\$231,313.47)
ANCILLARY SERVICES					\$638,171.26	\$621,935.92	\$599,869.77
TCC					\$565,970.30	\$69,730.58	\$121,348.84
	4	5	6	7	8	9	10
ENERGY	\$6,330,201.99	\$6,392,105.12	\$6,121,394.54	\$5,957,174.79	\$5,196,743.42	\$4,127,435.36	\$3,672,993.40
TRANSMISSION SERVICE	\$743,546.55	\$634,367.19	\$575,276.25	\$514,516.68	\$521,006.27	\$594,010.49	\$510,634.58
UPLIFT	\$445,092.88	\$519,550.51	\$372,337.83	\$658,702.38	\$530,084.99	\$383,613.63	\$372,658.35
RESIDUALS	(\$228,355.59)	(\$106,115.12)	(\$182,057.53)	(\$227,774.80)	(\$240,243.27)	(\$66,265.78)	\$60,763.27
ANCILLARY SERVICES	\$582,571.42	\$561,020.51	\$617,690.09	\$584,012.10	\$564,381.33	\$552,863.30	\$553,304.05
TCC	\$400,059.86	\$218,944.21	\$154,110.15	\$127,002.09	\$120,839.21	\$545,270.66	\$294,333.75
	11	12	13	14	15	16	17
ENERGY	\$5,463,481.03	\$5,952,389.99	\$5,250,399.53	\$5,654,094.63	\$4,864,801.50	\$4,099,049.06	\$3,834,945.58
TRANSMISSION SERVICE	\$500,717.64	\$518,201.43	\$482,541.33	\$620,452.98	\$671,700.50	\$672,754.05	\$538,049.65
UPLIFT	\$699,385.30	\$516,755.04	\$437,775.94	\$608,143.20	\$462,839.87	\$394,311.29	\$327,164.28
RESIDUALS	(\$170,924.36)	(\$167,948.20)	(\$131,403.89)	(\$138,358.34)	(\$157,898.51)	(\$205,835.86)	(\$176,621.96)
ANCILLARY SERVICES	\$576,898.72	\$594,350.01	\$569,384.36	\$624,464.86	\$593,240.47	\$504,018.08	\$493,592.04
TCC	\$81,475.67	\$110,762.89	\$43,395.71	\$298,711.20	\$436,424.10	\$463,933.98	\$289,030.12
	18	19	20	21	22	23	24
ENERGY	\$4,806,227.63	\$4,865,859.15	\$4,727,929.79	\$4,550,449.42	\$4,443,539.53	\$3,976,907.63	\$3,695,187.85
TRANSMISSION SERVICE	\$507,199.96	\$572,640.53	\$698,149.94	\$607,256.93	\$574,587.54	\$755,120.34	\$508,958.38
UPLIFT	\$326,492.10	\$409,184.64	\$533,528.97	\$457,405.81	\$496,236.76	\$342,342.89	\$495,026.28
RESIDUALS	(\$204,476.13)	(\$197,601.02)	(\$171,485.36)	(\$139,923.40)	(\$136,765.59)	(\$134,232.99)	(\$185,080.46)
ANCILLARY SERVICES	\$576,603.54	\$596,880.49	\$574,082.20	\$607,418.33	\$592,906.02	\$567,708.69	\$541,518.33
TCC	\$83,834.84	\$206,451.54	\$487,781.03	\$400,869.76	\$298,385.43	\$746,513.34	\$202,996.53
	25	26	27	28			
ENERGY	\$5,399,462.62	\$5,272,755.81	\$5,561,990.60	\$6,152,563.39			
TRANSMISSION SERVICE	\$543,396.95	\$582,304.46	\$763,763.87	\$620,815.01			
UPLIFT	\$530,003.22	\$370,521.94	\$505,921.48	\$410,832.75			
RESIDUALS	(\$397,796.67)	(\$299,116.51)	(\$88,961.53)	(\$202,371.15)			
ANCILLARY SERVICES	\$598,208.82	\$580,606.85	\$718,869.52	\$615,621.42			
TCC	\$138,886.97	\$153,392.40	\$383,639.74	\$159,068.32			



SETTLEMENTS REPORT  
 FEBRUARY 2002 CLOSEOUT SETTLEMENT  
 DECEMBER 6, 2005

**CLOSEOUT SETTLEMENT MARKET COSTS**

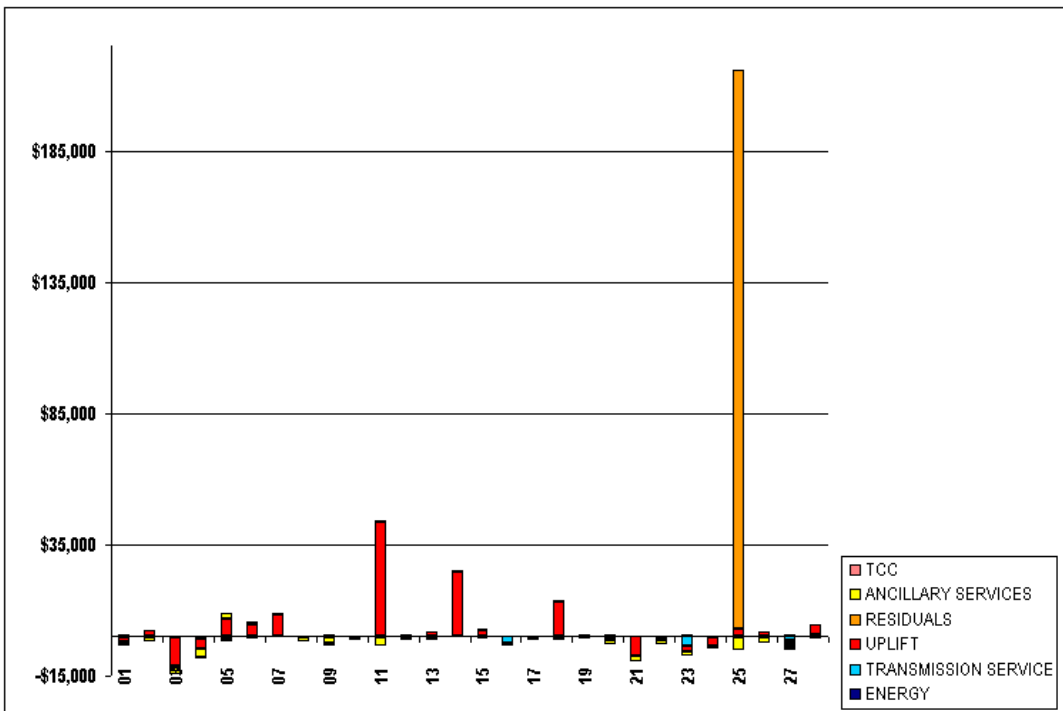
	MONDAY	TUESDAY	WEDNESDAY	THURSDAY	FRIDAY	SATURDAY	SUNDAY
					<b>1</b>	<b>2</b>	<b>3</b>
ENERGY					\$5,551,920.88	\$4,753,389.21	\$4,391,626.92
TRANSMISSION SERVICE					\$633,637.94	\$432,577.52	\$443,261.33
UPLIFT					\$526,107.90	\$508,825.47	\$592,438.01
RESIDUALS					(\$115,890.64)	(\$213,637.86)	(\$231,582.40)
ANCILLARY SERVICES					\$637,335.90	\$620,414.57	\$597,019.79
TCC					\$565,702.88	\$69,716.38	\$121,314.06
	<b>4</b>	<b>5</b>	<b>6</b>	<b>7</b>	<b>8</b>	<b>9</b>	<b>10</b>
ENERGY	\$6,330,302.09	\$6,392,104.71	\$6,121,404.16	\$5,957,409.76	\$5,196,743.39	\$4,127,434.88	\$3,672,993.32
TRANSMISSION SERVICE	\$742,840.81	\$633,733.21	\$575,178.79	\$514,465.60	\$520,851.36	\$593,563.94	\$510,406.60
UPLIFT	\$440,977.86	\$526,184.31	\$376,848.27	\$666,823.87	\$530,102.87	\$384,179.39	\$372,676.13
RESIDUALS	(\$228,058.88)	(\$107,164.40)	(\$180,964.02)	(\$226,998.43)	(\$240,003.72)	(\$66,161.20)	\$60,803.51
ANCILLARY SERVICES	\$579,539.86	\$563,057.92	\$616,673.59	\$583,633.46	\$562,812.63	\$550,547.39	\$552,514.47
TCC	\$399,673.98	\$218,844.57	\$154,110.15	\$127,001.13	\$120,769.59	\$544,493.86	\$294,026.01
	<b>11</b>	<b>12</b>	<b>13</b>	<b>14</b>	<b>15</b>	<b>16</b>	<b>17</b>
ENERGY	\$5,463,480.13	\$5,952,895.89	\$5,250,401.83	\$5,654,116.83	\$4,864,710.76	\$4,099,049.04	\$3,834,945.98
TRANSMISSION SERVICE	\$500,627.54	\$518,130.79	\$482,313.91	\$620,347.29	\$671,582.54	\$670,476.02	\$537,978.55
UPLIFT	\$742,866.22	\$517,051.74	\$439,762.45	\$632,541.83	\$465,235.15	\$394,284.77	\$327,622.95
RESIDUALS	(\$169,988.53)	(\$168,053.57)	(\$131,692.31)	(\$137,833.55)	(\$157,236.81)	(\$206,052.91)	(\$176,662.94)
ANCILLARY SERVICES	\$573,239.41	\$593,032.27	\$568,509.85	\$624,347.66	\$592,845.62	\$503,037.43	\$492,018.46
TCC	\$81,475.67	\$110,762.89	\$43,395.71	\$298,684.84	\$436,391.44	\$463,827.12	\$289,030.60
	<b>18</b>	<b>19</b>	<b>20</b>	<b>21</b>	<b>22</b>	<b>23</b>	<b>24</b>
ENERGY	\$4,806,093.58	\$4,865,859.16	\$4,727,925.88	\$4,550,448.99	\$4,443,543.49	\$3,976,907.99	\$3,695,187.96
TRANSMISSION SERVICE	\$507,079.33	\$572,532.99	\$697,370.99	\$607,195.72	\$574,405.03	\$751,316.57	\$508,706.55
UPLIFT	\$339,868.55	\$409,505.73	\$533,010.10	\$449,828.84	\$495,475.98	\$340,587.09	\$491,590.64
RESIDUALS	(\$204,263.05)	(\$197,251.82)	(\$170,883.72)	(\$139,521.09)	(\$137,017.05)	(\$133,995.10)	(\$184,943.47)
ANCILLARY SERVICES	\$575,326.02	\$596,140.48	\$572,327.50	\$605,558.05	\$591,015.59	\$565,632.60	\$540,788.01
TCC	\$83,832.74	\$206,418.29	\$487,550.51	\$400,862.80	\$298,340.07	\$746,961.81	\$202,865.89
	<b>25</b>	<b>26</b>	<b>27</b>	<b>28</b>			
ENERGY	\$5,399,455.59	\$5,272,755.79	\$5,562,735.35	\$6,153,076.10			
TRANSMISSION SERVICE	\$542,966.88	\$581,711.23	\$762,281.39	\$620,647.08			
UPLIFT	\$532,692.80	\$372,096.72	\$505,534.90	\$414,755.54			
RESIDUALS	(\$184,615.05)	(\$298,992.33)	(\$90,047.83)	(\$202,243.82)			
ANCILLARY SERVICES	\$593,249.97	\$578,913.96	\$717,533.74	\$614,789.30			
TCC	\$138,886.97	\$153,280.75	\$382,931.38	\$158,980.14			



SETTLEMENTS REPORT  
 FEBRUARY 2002 CLOSEOUT SETTLEMENT  
 DECEMBER 6, 2005

**CLOSEOUT SETTLEMENT MARKET COSTS DELTA**

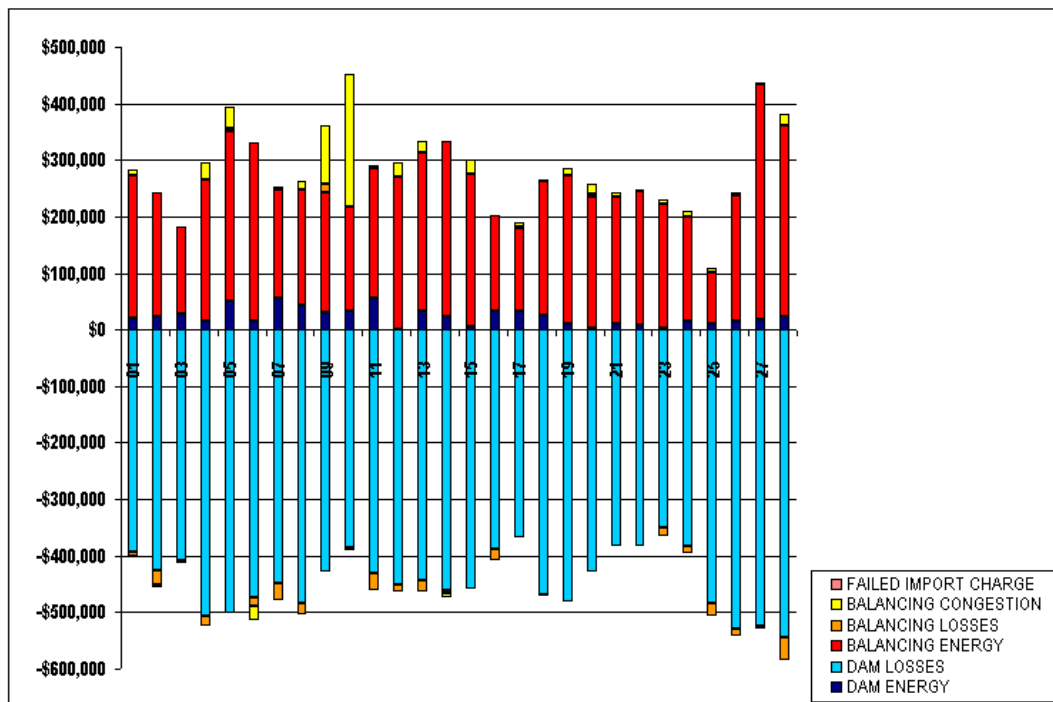
	MONDAY	TUESDAY	WEDNESDAY	THURSDAY	FRIDAY	SATURDAY	SUNDAY
					1	2	3
ENERGY					\$811.48	\$313.33	\$337.36
TRANSMISSION SERVICE					(\$404.26)	(\$78.90)	(\$104.64)
UPLIFT					(\$1,784.27)	\$2,171.97	(\$11,198.54)
RESIDUALS					(\$399.21)	(\$332.49)	(\$268.93)
ANCILLARY SERVICES					(\$835.36)	(\$1,521.35)	(\$2,849.98)
TCC					(\$267.42)	(\$14.20)	(\$34.78)
	4	5	6	7	8	9	10
ENERGY	\$100.10	(\$0.41)	\$9.62	\$234.97	(\$0.03)	(\$0.48)	(\$0.08)
TRANSMISSION SERVICE	(\$705.74)	(\$633.98)	(\$97.46)	(\$51.08)	(\$154.91)	(\$446.55)	(\$227.98)
UPLIFT	(\$4,115.02)	\$6,633.80	\$4,510.44	\$8,121.49	\$17.88	\$565.76	\$17.78
RESIDUALS	\$296.71	(\$1,049.28)	\$1,093.51	\$776.37	\$239.55	\$104.58	\$40.24
ANCILLARY SERVICES	(\$3,031.56)	\$2,037.41	(\$1,016.50)	(\$378.64)	(\$1,568.70)	(\$2,315.91)	(\$789.58)
TCC	(\$385.88)	(\$99.64)	\$0.00	(\$0.96)	(\$69.62)	(\$776.80)	(\$307.74)
	11	12	13	14	15	16	17
ENERGY	(\$0.90)	\$505.90	\$2.30	\$22.20	(\$90.74)	(\$0.02)	\$0.40
TRANSMISSION SERVICE	(\$90.10)	(\$70.64)	(\$227.42)	(\$105.69)	(\$117.96)	(\$2,278.03)	(\$71.10)
UPLIFT	\$43,480.92	\$296.70	\$1,986.51	\$24,398.63	\$2,395.28	(\$26.52)	\$458.67
RESIDUALS	\$935.83	(\$105.37)	(\$288.62)	\$524.79	\$661.70	(\$217.05)	(\$40.98)
ANCILLARY SERVICES	(\$3,659.31)	(\$1,317.74)	(\$874.51)	(\$117.20)	(\$394.85)	(\$980.65)	(\$1,573.58)
TCC	\$0.00	\$0.00	\$0.00	(\$26.36)	(\$32.66)	(\$106.86)	\$0.48
	18	19	20	21	22	23	24
ENERGY	(\$134.05)	\$0.01	(\$3.91)	(\$0.43)	\$3.96	\$0.36	\$0.11
TRANSMISSION SERVICE	(\$120.63)	(\$107.54)	(\$778.95)	(\$61.21)	(\$182.51)	(\$3,803.77)	(\$251.83)
UPLIFT	\$13,376.45	\$321.09	(\$518.87)	(\$7,576.97)	(\$760.78)	(\$1,755.80)	(\$3,435.64)
RESIDUALS	\$213.08	\$349.20	\$601.64	\$402.31	(\$251.46)	\$237.89	\$136.99
ANCILLARY SERVICES	(\$1,277.52)	(\$740.01)	(\$1,754.70)	(\$1,860.28)	(\$1,890.43)	(\$2,076.09)	(\$730.32)
TCC	(\$2.10)	(\$33.25)	(\$230.52)	(\$6.96)	(\$45.36)	\$448.47	(\$130.64)
	25	26	27	28			
ENERGY	(\$7.03)	(\$0.02)	\$744.75	\$512.71			
TRANSMISSION SERVICE	(\$430.07)	(\$593.23)	(\$1,482.48)	(\$167.93)			
UPLIFT	\$2,689.58	\$1,574.78	(\$386.58)	\$3,922.79			
RESIDUALS	\$213,181.62	\$124.18	(\$1,086.30)	\$127.33			
ANCILLARY SERVICES	(\$4,958.85)	(\$1,692.89)	(\$1,335.78)	(\$832.12)			
TCC	\$0.00	(\$111.65)	(\$708.36)	(\$88.18)			



SETTLEMENTS REPORT  
 FEBRUARY 2002 CLOSEOUT SETTLEMENT  
 DECEMBER 6, 2005

**24-MONTH SETTLEMENT ADJUSTMENT MARKET RESIDUALS**

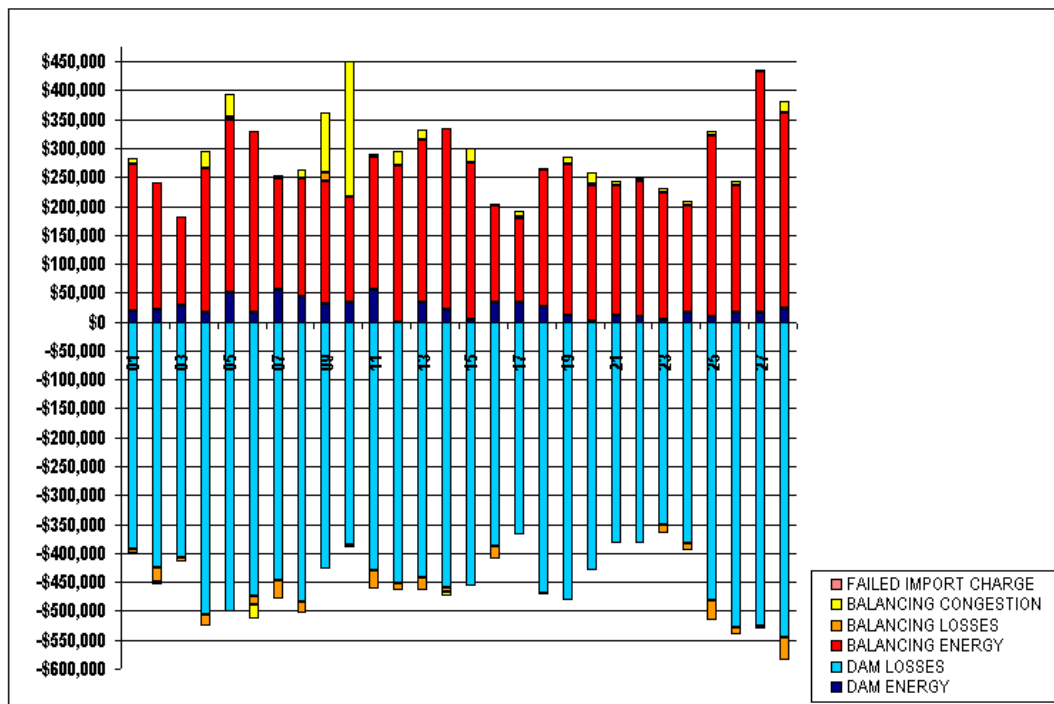
	MONDAY	TUESDAY	WEDNESDAY	THURSDAY	FRIDAY	SATURDAY	SUNDAY
DAM ENERGY					1	2	3
DAM LOSSES					\$19,641.62	\$22,465.64	\$28,599.33
BALANCING ENERGY					(\$393,020.56)	(\$425,002.43)	(\$408,574.12)
BALANCING LOSSES					\$254,350.52	\$219,531.42	\$152,516.68
BALANCING CONGESTION					(\$7,203.77)	(\$24,978.41)	(\$5,875.53)
FAILED IMPORT CHARGE					\$10,251.67	(\$5,488.45)	\$1,869.53
					\$0.00	\$0.00	\$0.00
	4	5	6	7	8	9	10
DAM ENERGY	\$15,987.11	\$51,905.22	\$15,607.71	\$56,089.80	\$42,602.81	\$30,937.24	\$33,197.65
DAM LOSSES	(\$507,281.53)	(\$500,941.60)	(\$474,608.95)	(\$447,989.42)	(\$484,274.81)	(\$428,626.36)	(\$385,627.00)
BALANCING ENERGY	\$249,647.06	\$299,509.20	\$314,183.00	\$192,221.80	\$205,111.43	\$211,634.83	\$183,203.74
BALANCING LOSSES	(\$17,597.34)	\$4,339.94	(\$14,395.50)	(\$31,934.13)	(\$19,472.67)	\$14,936.62	(\$5,090.94)
BALANCING CONGESTION	\$30,352.12	\$38,499.39	(\$25,363.81)	\$3,732.86	\$15,631.67	\$104,667.56	\$234,944.29
FAILED IMPORT CHARGE	\$0.00	\$0.00	\$0.00	\$0.00	\$0.00	\$0.00	\$0.00
	11	12	13	14	15	16	17
DAM ENERGY	\$55,116.25	(\$550.59)	\$34,020.90	\$22,003.12	\$5,267.19	\$33,325.22	\$33,784.36
DAM LOSSES	(\$429,911.11)	(\$451,488.93)	(\$443,213.92)	(\$460,243.84)	(\$457,918.49)	(\$388,115.40)	(\$367,448.74)
BALANCING ENERGY	\$230,438.04	\$270,801.62	\$280,430.08	\$312,166.84	\$269,012.07	\$168,416.39	\$145,326.15
BALANCING LOSSES	(\$32,325.77)	(\$11,972.96)	(\$21,106.53)	(\$6,321.67)	\$1,336.39	(\$21,196.20)	\$3,047.65
BALANCING CONGESTION	\$4,897.27	\$24,678.15	\$18,228.37	(\$6,659.33)	\$23,993.28	\$1,628.87	\$8,610.95
FAILED IMPORT CHARGE	\$0.00	\$0.00	\$0.00	\$0.00	\$0.00	\$0.00	\$0.00
	18	19	20	21	22	23	24
DAM ENERGY	\$26,303.30	\$10,387.65	\$2,785.23	\$10,755.11	\$8,214.25	\$4,035.40	\$16,717.60
DAM LOSSES	(\$469,134.77)	(\$480,666.52)	(\$429,509.54)	(\$383,152.00)	(\$384,223.81)	(\$349,984.58)	(\$384,096.40)
BALANCING ENERGY	\$235,518.27	\$262,430.37	\$232,800.79	\$224,187.71	\$235,856.80	\$218,745.26	\$183,551.17
BALANCING LOSSES	(\$2,156.19)	(\$1,978.18)	\$3,416.57	\$1,327.02	\$1,979.90	(\$15,014.14)	(\$10,500.60)
BALANCING CONGESTION	\$4,615.03	\$12,081.45	\$18,456.93	\$6,807.36	\$1,351.62	\$7,310.40	\$9,208.29
FAILED IMPORT CHARGE	\$0.00	\$0.00	\$0.00	\$0.00	\$0.00	\$0.00	\$0.00
	25	26	27	28			
DAM ENERGY	\$9,972.56	\$16,446.73	\$17,338.26	\$23,799.72			
DAM LOSSES	(\$482,828.91)	(\$528,657.98)	(\$525,379.76)	(\$544,948.53)			
BALANCING ENERGY	\$90,399.15	\$220,148.11	\$416,714.61	\$336,471.04			
BALANCING LOSSES	(\$24,191.46)	(\$12,694.69)	(\$4,562.68)	(\$40,600.56)			
BALANCING CONGESTION	\$7,941.72	\$5,587.72	\$3,144.26	\$21,355.26			
FAILED IMPORT CHARGE	\$0.00	\$0.00	\$0.00	\$0.00			



SETTLEMENTS REPORT  
 FEBRUARY 2002 CLOSEOUT SETTLEMENT  
 DECEMBER 6, 2005

**CLOSEOUT SETTLEMENT MARKET RESIDUALS ANALYSIS**

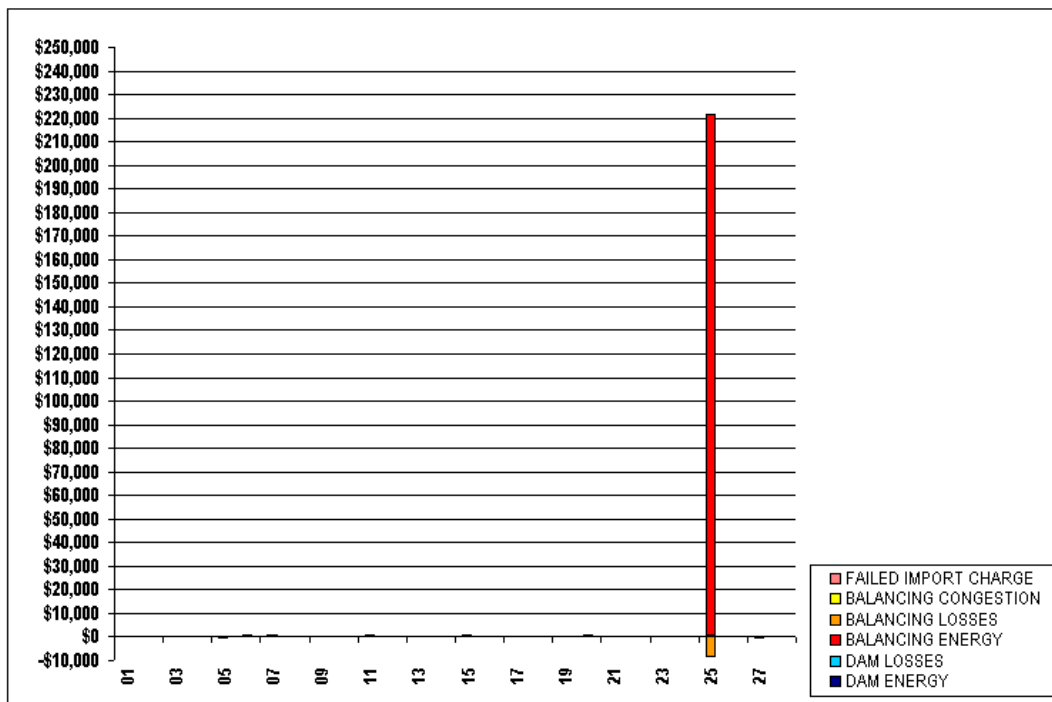
	MONDAY	TUESDAY	WEDNESDAY	THURSDAY	FRIDAY	SATURDAY	SUNDAY
					1	2	3
DAM ENERGY					\$19,641.87	\$22,465.64	\$28,599.33
DAM LOSSES					(\$393,037.21)	(\$425,002.43)	(\$408,574.12)
BALANCING ENERGY					\$253,879.24	\$219,246.19	\$152,270.45
BALANCING LOSSES					(\$7,257.43)	(\$25,010.32)	(\$5,898.30)
BALANCING CONGESTION					\$10,393.37	(\$5,488.11)	\$1,869.55
FAILED IMPORT CHARGE					\$0.00	\$0.00	\$0.00
	4	5	6	7	8	9	10
DAM ENERGY	\$15,987.11	\$51,905.22	\$15,607.71	\$56,090.69	\$42,602.81	\$30,937.24	\$33,197.65
DAM LOSSES	(\$507,281.53)	(\$500,941.60)	(\$474,608.95)	(\$447,998.37)	(\$484,274.81)	(\$428,626.36)	(\$385,627.00)
BALANCING ENERGY	\$249,811.40	\$298,487.78	\$315,094.25	\$192,806.25	\$205,329.07	\$211,695.03	\$183,223.18
BALANCING LOSSES	(\$17,586.61)	\$4,251.02	(\$14,338.02)	(\$31,899.79)	(\$19,457.45)	\$14,941.83	(\$5,089.07)
BALANCING CONGESTION	\$30,352.09	\$38,560.28	(\$25,239.65)	\$3,876.34	\$15,638.32	\$104,706.33	\$234,963.16
FAILED IMPORT CHARGE	\$0.00	\$0.00	\$0.00	\$0.00	\$0.00	\$0.00	\$0.00
	11	12	13	14	15	16	17
DAM ENERGY	\$55,117.56	(\$550.58)	\$34,020.90	\$22,003.12	\$5,267.19	\$33,325.22	\$33,784.36
DAM LOSSES	(\$429,922.98)	(\$451,503.70)	(\$443,213.92)	(\$460,243.84)	(\$457,918.49)	(\$388,115.40)	(\$367,448.74)
BALANCING ENERGY	\$230,985.16	\$270,725.84	\$280,227.81	\$312,471.39	\$269,410.19	\$168,244.11	\$145,295.95
BALANCING LOSSES	(\$32,281.25)	(\$1,995.44)	(\$21,130.31)	(\$6,293.66)	\$1,370.16	(\$21,207.72)	\$3,046.00
BALANCING CONGESTION	\$5,199.30	\$24,685.61	\$18,165.73	(\$6,560.17)	\$24,222.96	\$1,595.58	\$8,601.80
FAILED IMPORT CHARGE	\$0.00	\$0.00	\$0.00	\$0.00	\$0.00	\$0.00	\$0.00
	18	19	20	21	22	23	24
DAM ENERGY	\$26,303.30	\$10,387.65	\$2,785.23	\$10,755.06	\$8,214.42	\$4,035.40	\$16,717.60
DAM LOSSES	(\$469,134.77)	(\$480,666.52)	(\$429,509.54)	(\$383,169.27)	(\$384,241.07)	(\$349,984.58)	(\$384,096.40)
BALANCING ENERGY	\$235,708.34	\$262,687.15	\$232,954.36	\$224,535.11	\$235,651.49	\$218,968.94	\$183,661.21
BALANCING LOSSES	(\$2,137.15)	(\$1,951.32)	\$3,430.70	\$1,358.93	\$1,949.86	(\$15,013.11)	(\$10,497.10)
BALANCING CONGESTION	\$4,618.95	\$12,136.68	\$18,879.90	\$6,846.51	\$1,352.58	\$7,314.49	\$9,231.73
FAILED IMPORT CHARGE	\$0.00	\$0.00	\$0.00	\$0.00	\$0.00	\$0.00	\$0.00
	25	26	27	28			
DAM ENERGY	\$9,972.56	\$16,446.73	\$17,338.26	\$23,799.72			
DAM LOSSES	(\$482,828.91)	(\$528,657.98)	(\$525,379.70)	(\$544,948.53)			
BALANCING ENERGY	\$312,014.55	\$220,213.76	\$415,535.05	\$336,646.91			
BALANCING LOSSES	(\$32,771.07)	(\$12,648.20)	(\$4,502.43)	(\$40,631.76)			
BALANCING CONGESTION	\$8,053.77	\$5,599.75	\$3,170.68	\$21,337.27			
FAILED IMPORT CHARGE	\$0.00	\$0.00	\$0.00	\$0.00			



SETTLEMENTS REPORT  
 FEBRUARY 2002 CLOSEOUT SETTLEMENT  
 DECEMBER 6, 2005

**CLOSEOUT SETTLEMENT MARKET RESIDUALS DELTA ANALYSIS**

	MONDAY	TUESDAY	WEDNESDAY	THURSDAY	FRIDAY	SATURDAY	SUNDAY
DAM ENERGY					1	2	3
DAM LOSSES					\$0.25	\$0.00	\$0.00
BALANCING ENERGY					(\$16.65)	\$0.00	\$0.00
BALANCING LOSSES					(\$471.28)	(\$285.23)	(\$246.23)
BALANCING CONGESTION					(\$53.66)	(\$31.91)	(\$22.77)
FAILED IMPORT CHARGE					\$141.70	\$0.34	\$0.02
					\$0.00	\$0.00	\$0.00
	4	5	6	7	8	9	10
DAM ENERGY	\$0.00	\$0.00	\$0.00	\$0.89	\$0.00	\$0.00	\$0.00
DAM LOSSES	\$0.00	\$0.00	\$0.00	(\$8.95)	\$0.00	\$0.00	\$0.00
BALANCING ENERGY	\$164.34	(\$1,021.42)	\$911.25	\$584.45	\$217.64	\$60.20	\$19.44
BALANCING LOSSES	\$10.73	(\$88.92)	\$57.48	\$34.34	\$15.22	\$5.21	\$1.87
BALANCING CONGESTION	(\$0.03)	\$60.89	\$124.16	\$143.48	\$6.65	\$38.77	\$18.87
FAILED IMPORT CHARGE	\$0.00	\$0.00	\$0.00	\$0.00	\$0.00	\$0.00	\$0.00
	11	12	13	14	15	16	17
DAM ENERGY	\$1.31	\$0.01	\$0.00	\$0.00	\$0.00	\$0.00	\$0.00
DAM LOSSES	(\$11.87)	(\$14.77)	\$0.00	\$0.00	\$0.00	\$0.00	\$0.00
BALANCING ENERGY	\$547.12	(\$75.78)	(\$202.27)	\$304.55	\$398.12	(\$172.28)	(\$30.20)
BALANCING LOSSES	\$44.52	(\$22.48)	(\$23.78)	\$28.01	\$33.77	(\$11.52)	(\$1.65)
BALANCING CONGESTION	\$302.03	\$7.46	(\$62.64)	\$99.16	\$229.68	(\$33.29)	(\$9.15)
FAILED IMPORT CHARGE	\$0.00	\$0.00	\$0.00	\$0.00	\$0.00	\$0.00	\$0.00
	18	19	20	21	22	23	24
DAM ENERGY	\$0.00	\$0.00	\$0.00	(\$0.05)	\$0.17	\$0.00	\$0.00
DAM LOSSES	\$0.00	\$0.00	\$0.00	(\$17.27)	(\$17.26)	\$0.00	\$0.00
BALANCING ENERGY	\$190.07	\$256.78	\$153.57	\$347.40	(\$205.31)	\$223.68	\$110.04
BALANCING LOSSES	\$19.04	\$26.86	\$14.13	\$31.91	(\$30.04)	\$1.03	\$3.50
BALANCING CONGESTION	\$3.92	\$55.23	\$422.97	\$39.15	\$0.96	\$4.09	\$23.44
FAILED IMPORT CHARGE	\$0.00	\$0.00	\$0.00	\$0.00	\$0.00	\$0.00	\$0.00
	25	26	27	28			
DAM ENERGY	\$0.00	\$0.00	\$0.00	\$0.00			
DAM LOSSES	\$0.00	\$0.00	\$0.06	\$0.00			
BALANCING ENERGY	\$221,615.40	\$65.65	(\$1,179.56)	\$175.87			
BALANCING LOSSES	(\$8,579.61)	\$46.49	\$60.25	(\$31.20)			
BALANCING CONGESTION	\$112.05	\$12.03	\$26.42	(\$17.99)			
FAILED IMPORT CHARGE	\$0.00	\$0.00	\$0.00	\$0.00			

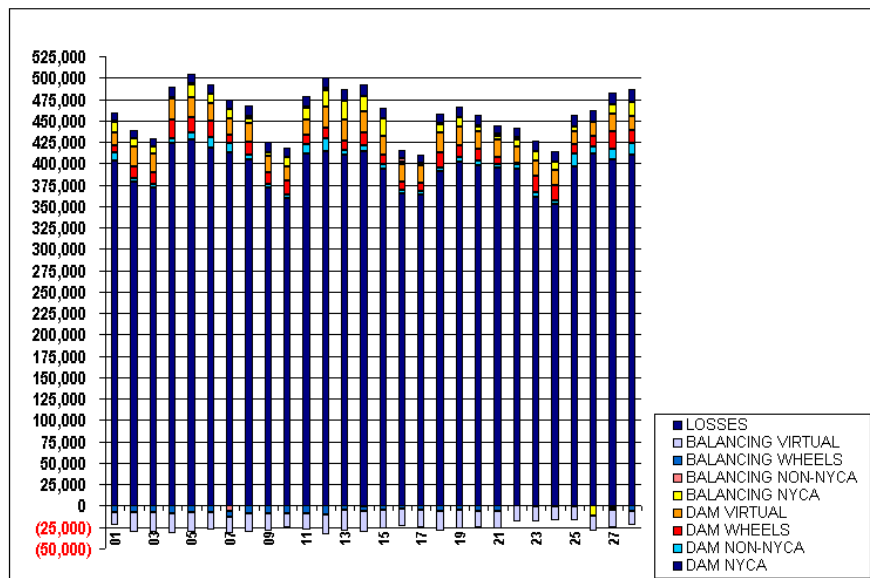




SETTLEMENTS REPORT  
 FEBRUARY 2002 CLOSEOUT SETTLEMENT  
 DECEMBER 6, 2005

**24-MONTH SETTLEMENT ADJUSTMENT MARKET WITHDRAWALS ANALYSIS**

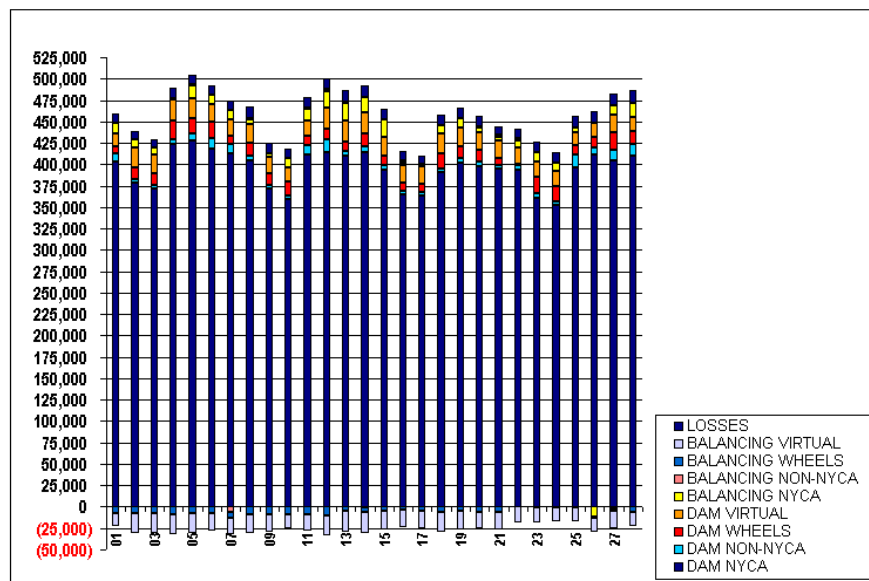
	MONDAY	TUESDAY	WEDNESDAY	THURSDAY	FRIDAY	SATURDAY	SUNDAY
					<b>1</b>	<b>2</b>	<b>3</b>
DAM NYCA					402,692	378,619	372,164
DAM NON-NYCA					9,567	4,124	4,128
DAM WHEELS					9,239	13,700	12,800
DAM VIRTUAL					14,772	22,578	22,694
BALANCING NYCA					12,129	10,076	7,744
BALANCING NON-NYCA					671	275	248
BALANCING WHEELS					(7,639)	(8,149)	(8,000)
BALANCING VIRTUAL					(14,772)	(22,578)	(22,694)
UFELLOSSES					10,827	9,781	9,298
	<b>4</b>	<b>5</b>	<b>6</b>	<b>7</b>	<b>8</b>	<b>9</b>	<b>10</b>
DAM NYCA	423,110	427,780	418,675	412,589	404,772	371,879	358,985
DAM NON-NYCA	5,763	7,595	11,330	11,784	5,288	4,123	3,905
DAM WHEELS	22,208	18,162	19,560	9,400	15,650	12,985	17,300
DAM VIRTUAL	24,006	23,165	20,163	19,182	21,736	19,779	16,223
BALANCING NYCA	1,568	15,898	11,741	9,949	5,370	3,738	10,370
BALANCING NON-NYCA	812	416	147	(5,849)	1,722	659	88
BALANCING WHEELS	(8,421)	(7,230)	(7,704)	(7,200)	(9,376)	(9,119)	(9,588)
BALANCING VIRTUAL	(24,006)	(23,165)	(20,163)	(19,182)	(21,736)	(19,779)	(16,223)
UFELLOSSES	11,704	11,661	10,173	11,464	12,649	12,288	10,982
	<b>11</b>	<b>12</b>	<b>13</b>	<b>14</b>	<b>15</b>	<b>16</b>	<b>17</b>
DAM NYCA	411,687	413,783	409,520	414,744	393,757	364,883	363,502
DAM NON-NYCA	10,563	16,066	6,350	6,234	4,887	4,123	3,904
DAM WHEELS	11,500	11,500	11,200	14,400	11,110	9,600	9,600
DAM VIRTUAL	17,900	24,179	24,196	25,165	22,405	20,101	20,481
BALANCING NYCA	12,756	20,385	21,150	17,664	20,626	3,590	976
BALANCING NON-NYCA	1,661	2,218	875	(239)	50	2,950	2,305
BALANCING WHEELS	(9,525)	(9,675)	(4,835)	(5,230)	(5,004)	(3,900)	(4,800)
BALANCING VIRTUAL	(17,900)	(24,179)	(24,196)	(25,165)	(22,405)	(20,101)	(20,481)
UFELLOSSES	12,251	12,595	13,579	14,277	12,269	10,480	9,755
	<b>18</b>	<b>19</b>	<b>20</b>	<b>21</b>	<b>22</b>	<b>23</b>	<b>24</b>
DAM NYCA	390,417	402,216	397,744	394,775	393,441	360,795	351,920
DAM NON-NYCA	4,396	4,794	4,749	4,784	5,185	5,309	4,895
DAM WHEELS	18,400	14,400	14,610	7,600	1,600	19,200	17,891
DAM VIRTUAL	22,558	20,881	19,711	20,418	19,018	17,760	17,008
BALANCING NYCA	9,828	11,109	6,646	4,820	8,929	11,548	9,550
BALANCING NON-NYCA	800	218	829	1,892	2,575	(250)	(2)
BALANCING WHEELS	(6,608)	(5,500)	(6,140)	(6,000)	0	(96)	(611)
BALANCING VIRTUAL	(22,558)	(20,881)	(19,711)	(20,418)	(19,018)	(17,760)	(17,008)
UFELLOSSES	11,533	12,720	11,790	10,513	11,007	12,112	12,393
	<b>25</b>	<b>26</b>	<b>27</b>	<b>28</b>			
DAM NYCA	395,744	410,899	404,694	409,431			
DAM NON-NYCA	16,196	8,294	12,344	13,817			
DAM WHEELS	9,950	13,150	20,332	15,708			
DAM VIRTUAL	15,483	16,635	20,644	16,795			
BALANCING NYCA	4,966	(11,744)	10,330	16,087			
BALANCING NON-NYCA	(622)	(290)	(1,858)	338			
BALANCING WHEELS	(610)	(274)	(2,841)	(5,790)			
BALANCING VIRTUAL	(15,483)	(16,635)	(20,644)	(16,795)			
UFELLOSSES	13,946	13,088	14,110	14,397			



SETTLEMENTS REPORT  
 FEBRUARY 2002 CLOSEOUT SETTLEMENT  
 DECEMBER 6, 2005

**CLOSEOUT SETTLEMENT MARKET WITHDRAWALS ANALYSIS**

	MONDAY	TUESDAY	WEDNESDAY	THURSDAY	FRIDAY	SATURDAY	SUNDAY
					1	2	4
DAM NYCA					402,692	378,619	423,110
DAM NON-NYCA					9,657	4,124	5,763
DAM WHEELS					9,239	13,700	22,208
DAM VIRTUAL					14,772	22,578	24,006
BALANCING NYCA					12,007	9,944	1,427
BALANCING NON-NYCA					671	275	812
BALANCING WHEELS					(7,639)	(8,149)	(8,421)
BALANCING VIRTUAL					(14,772)	(22,578)	(24,006)
UFELOSSES					10,958	9,917	11,859
	3	5	6	7	8	9	11
DAM NYCA	372,164	427,780	418,675	412,589	404,772	371,879	411,687
DAM NON-NYCA	4,128	7,595	11,330	11,784	5,288	4,123	10,563
DAM WHEELS	12,900	18,162	19,560	9,400	15,650	12,985	11,500
DAM VIRTUAL	22,694	23,165	20,163	19,182	21,736	19,779	17,900
BALANCING NYCA	7,610	15,767	11,620	9,844	5,257	3,597	12,616
BALANCING NON-NYCA	248	416	147	(6,849)	1,722	659	1,661
BALANCING WHEELS	(8,000)	(7,230)	(7,704)	(7,200)	(9,376)	(9,119)	(9,525)
BALANCING VIRTUAL	(22,694)	(23,165)	(20,163)	(19,182)	(21,736)	(19,779)	(17,900)
UFELOSSES	9,434	11,754	10,319	11,600	12,673	12,432	12,410
	10	12	13	14	15	16	18
DAM NYCA	358,985	413,783	409,520	414,744	393,757	364,883	390,417
DAM NON-NYCA	3,905	16,066	6,350	6,234	4,887	4,123	4,396
DAM WHEELS	17,200	11,500	11,200	14,400	11,110	9,600	18,400
DAM VIRTUAL	16,223	24,179	24,196	25,165	22,405	20,101	22,558
BALANCING NYCA	10,204	20,265	21,022	17,530	20,483	3,443	9,690
BALANCING NON-NYCA	88	2,218	875	(239)	50	2,950	800
BALANCING WHEELS	(9,588)	(9,675)	(4,826)	(6,280)	(6,004)	(3,900)	(6,608)
BALANCING VIRTUAL	(16,223)	(24,179)	(24,196)	(25,165)	(22,405)	(20,101)	(22,558)
UFELOSSES	11,149	12,731	13,701	14,424	12,426	10,620	11,675
	17	19	20	21	22	23	25
DAM NYCA	363,502	402,216	397,744	394,775	393,441	360,795	395,744
DAM NON-NYCA	3,904	4,794	4,749	4,784	5,185	5,309	16,186
DAM WHEELS	9,600	14,400	14,610	7,600	1,600	19,200	9,950
DAM VIRTUAL	20,481	20,881	19,711	20,418	19,018	17,760	15,483
BALANCING NYCA	839	10,975	6,516	4,712	8,818	11,432	4,855
BALANCING NON-NYCA	2,305	218	829	1,892	2,575	(250)	(622)
BALANCING WHEELS	(4,800)	(5,500)	(6,140)	(6,000)	0	(96)	(610)
BALANCING VIRTUAL	(20,481)	(20,881)	(19,711)	(20,418)	(19,018)	(17,760)	(15,483)
UFELOSSES	9,891	12,862	11,928	10,638	11,113	12,240	14,067
	24	26	27	28			
DAM NYCA	351,920	410,899	404,694	409,431			
DAM NON-NYCA	4,895	8,294	12,344	13,817			
DAM WHEELS	17,891	13,150	20,332	15,708			
DAM VIRTUAL	17,008	16,635	20,644	16,795			
BALANCING NYCA	9,432	(11,856)	10,243	15,939			
BALANCING NON-NYCA	(2)	(290)	(1,858)	338			
BALANCING WHEELS	(611)	(274)	(2,841)	(6,790)			
BALANCING VIRTUAL	(17,008)	(16,635)	(20,644)	(16,795)			
UFELOSSES	12,518	13,203	14,194	14,570			

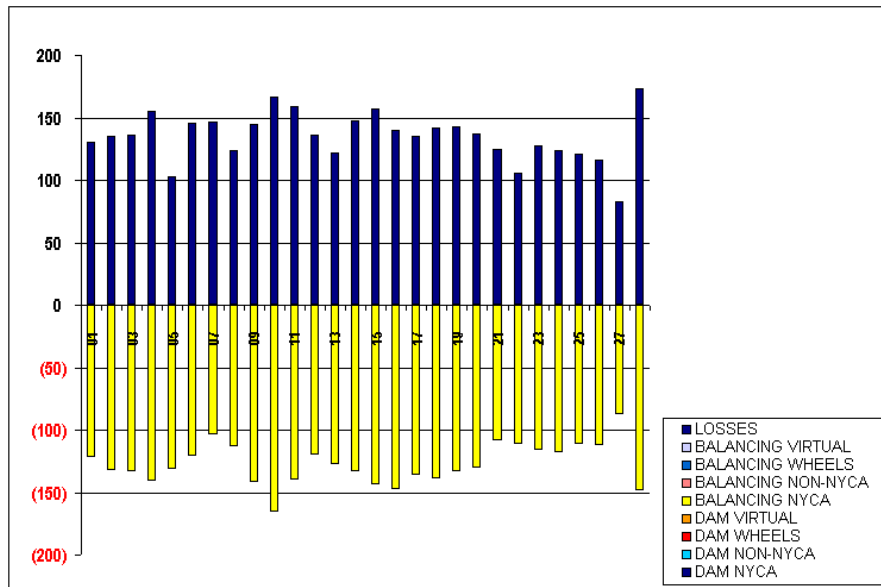




SETTLEMENTS REPORT  
 FEBRUARY 2002 CLOSEOUT SETTLEMENT  
 DECEMBER 6, 2005

**CLOSEOUT SETTLEMENT MARKET WITHDRAWALS DELTA ANALYSIS**

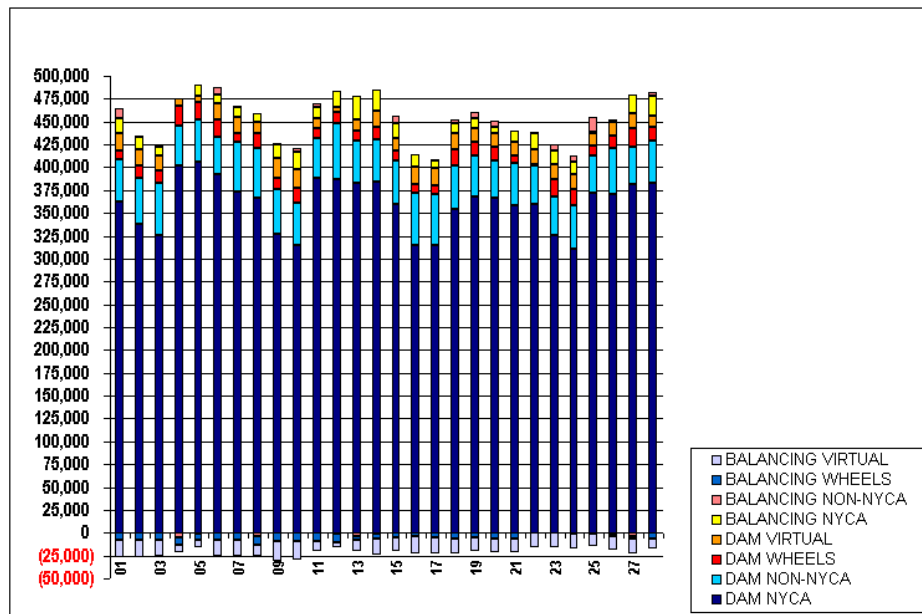
	MONDAY	TUESDAY	WEDNESDAY	THURSDAY	FRIDAY	SATURDAY	SUNDAY
					<b>1</b>	<b>2</b>	<b>3</b>
DAM NYCA					0	0	0
DAM NON-NYCA					0	0	0
DAM WHEELS					0	0	0
DAM VIRTUAL					0	0	0
BALANCING NYCA					(122)	(132)	(133)
BALANCING NON-NYCA					0	0	0
BALANCING WHEELS					0	0	0
BALANCING VIRTUAL					0	0	0
UFELOSSES					131	135	137
	<b>4</b>	<b>5</b>	<b>6</b>	<b>7</b>	<b>8</b>	<b>9</b>	<b>10</b>
DAM NYCA	0	0	0	0	0	0	0
DAM NON-NYCA	0	0	0	0	0	0	0
DAM WHEELS	0	0	0	0	0	0	0
DAM VIRTUAL	0	0	0	0	0	0	0
BALANCING NYCA	(141)	(131)	(121)	(104)	(113)	(142)	(166)
BALANCING NON-NYCA	0	0	0	0	0	0	0
BALANCING WHEELS	0	0	0	0	0	0	0
BALANCING VIRTUAL	0	0	0	0	0	0	0
UFELOSSES	155	103	146	146	124	144	167
	<b>11</b>	<b>12</b>	<b>13</b>	<b>14</b>	<b>15</b>	<b>16</b>	<b>17</b>
DAM NYCA	0	0	0	0	0	0	0
DAM NON-NYCA	0	0	0	0	0	0	0
DAM WHEELS	0	0	0	0	0	0	0
DAM VIRTUAL	0	0	0	0	0	0	0
BALANCING NYCA	(140)	(120)	(128)	(133)	(144)	(148)	(137)
BALANCING NON-NYCA	0	0	0	0	0	0	0
BALANCING WHEELS	0	0	0	0	0	0	0
BALANCING VIRTUAL	0	0	0	0	0	0	0
UFELOSSES	159	136	122	148	158	140	136
	<b>18</b>	<b>19</b>	<b>20</b>	<b>21</b>	<b>22</b>	<b>23</b>	<b>24</b>
DAM NYCA	0	0	0	0	0	0	0
DAM NON-NYCA	0	0	0	0	0	0	0
DAM WHEELS	0	0	0	0	0	0	0
DAM VIRTUAL	0	0	0	0	0	0	0
BALANCING NYCA	(139)	(133)	(131)	(109)	(111)	(117)	(118)
BALANCING NON-NYCA	0	0	0	0	0	0	0
BALANCING WHEELS	0	0	0	0	0	0	0
BALANCING VIRTUAL	0	0	0	0	0	0	0
UFELOSSES	142	142	138	125	105	128	124
	<b>25</b>	<b>26</b>	<b>27</b>	<b>28</b>			
DAM NYCA	0	0	0	0			
DAM NON-NYCA	0	0	0	0			
DAM WHEELS	0	0	0	0			
DAM VIRTUAL	0	0	0	0			
BALANCING NYCA	(111)	(112)	(87)	(148)			
BALANCING NON-NYCA	0	0	0	0			
BALANCING WHEELS	0	0	0	0			
BALANCING VIRTUAL	0	0	0	0			
UFELOSSES	121	116	83	173			



SETTLEMENTS REPORT  
 FEBRUARY 2002 CLOSEOUT SETTLEMENT  
 DECEMBER 6, 2005

**24-MONTH SETTLEMENT ADJUSTMENT MARKET SUPPLY ANALYSIS**

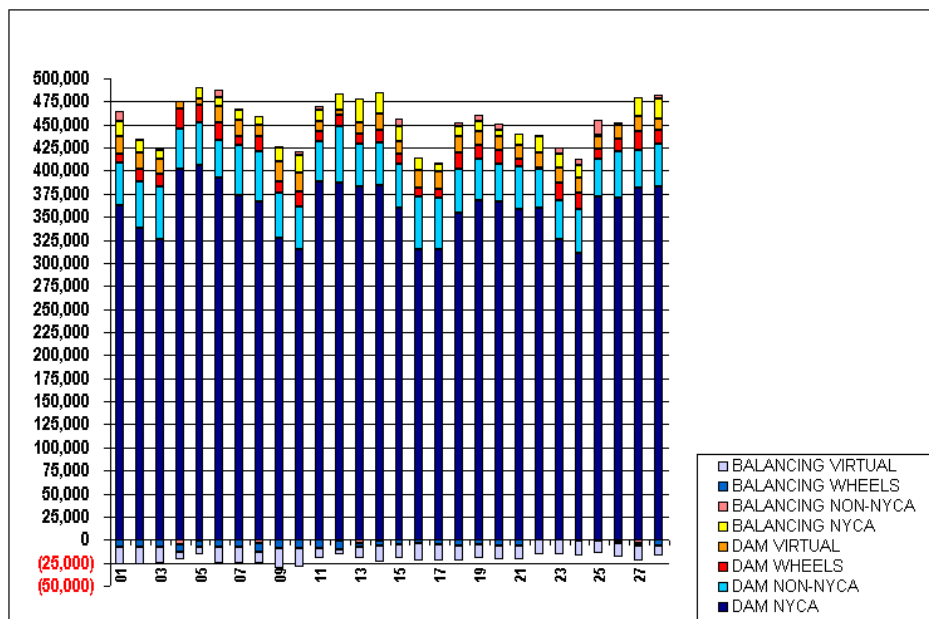
	MONDAY	TUESDAY	WEDNESDAY	THURSDAY	FRIDAY	SATURDAY	SUNDAY
					<b>1</b>	<b>2</b>	<b>3</b>
DAM NYCA					362,342	337,484	325,348
DAM NON-NYCA					46,552	50,566	57,938
DAM WHEELS					9,239	13,700	12,800
DAM VIRTUAL					19,121	18,168	17,039
BALANCING NYCA					15,949	13,658	9,892
BALANCING NON-NYCA					10,782	1,092	401
BALANCING WHEELS					(7,639)	(8,149)	(8,000)
BALANCING VIRTUAL					(19,121)	(18,168)	(17,039)
	<b>4</b>	<b>5</b>	<b>6</b>	<b>7</b>	<b>8</b>	<b>9</b>	<b>10</b>
DAM NYCA	402,118	406,385	392,841	372,730	366,935	327,766	315,116
DAM NON-NYCA	43,638	46,384	40,612	54,827	54,307	48,125	45,516
DAM WHEELS	22,208	18,162	19,560	9,400	15,650	12,985	17,300
DAM VIRTUAL	7,820	7,870	17,356	17,973	12,295	21,406	20,189
BALANCING NYCA	366	11,076	8,801	11,208	10,632	15,415	19,026
BALANCING NON-NYCA	(4,866)	(880)	8,262	662	(3,473)	556	4,272
BALANCING WHEELS	(8,421)	(7,230)	(7,704)	(7,200)	(9,376)	(9,119)	(9,588)
BALANCING VIRTUAL	(7,820)	(7,870)	(17,356)	(17,973)	(12,295)	(21,406)	(20,189)
	<b>11</b>	<b>12</b>	<b>13</b>	<b>14</b>	<b>15</b>	<b>16</b>	<b>17</b>
DAM NYCA	387,887	386,823	383,345	384,922	359,371	314,967	315,459
DAM NON-NYCA	44,112	61,787	46,118	45,524	47,614	57,192	55,453
DAM WHEELS	11,500	11,500	11,200	14,400	11,110	9,600	9,600
DAM VIRTUAL	10,235	5,423	12,170	16,728	14,394	18,609	18,639
BALANCING NYCA	12,063	17,465	25,417	23,777	16,022	13,585	8,609
BALANCING NON-NYCA	4,656	(1,027)	(3,481)	(1,514)	8,532	282	920
BALANCING WHEELS	(9,525)	(9,675)	(4,836)	(5,280)	(5,004)	(3,900)	(4,300)
BALANCING VIRTUAL	(10,235)	(5,423)	(12,170)	(16,728)	(14,394)	(18,609)	(18,639)
	<b>18</b>	<b>19</b>	<b>20</b>	<b>21</b>	<b>22</b>	<b>23</b>	<b>24</b>
DAM NYCA	354,215	367,991	366,505	358,146	359,520	325,954	310,453
DAM NON-NYCA	47,595	45,248	40,928	46,506	42,331	42,309	48,141
DAM WHEELS	18,400	14,400	14,610	7,600	1,600	19,200	17,891
DAM VIRTUAL	16,614	15,140	14,938	15,960	16,236	15,804	16,091
BALANCING NYCA	11,569	11,555	7,493	11,654	18,241	15,470	12,971
BALANCING NON-NYCA	3,495	6,163	6,832	479	946	5,781	7,189
BALANCING WHEELS	(6,608)	(5,500)	(6,140)	(5,000)	0	(96)	(611)
BALANCING VIRTUAL	(16,614)	(15,140)	(14,938)	(15,960)	(16,236)	(15,804)	(16,091)
	<b>25</b>	<b>26</b>	<b>27</b>	<b>28</b>			
DAM NYCA	372,003	370,695	381,363	383,440			
DAM NON-NYCA	41,357	50,147	41,535	45,565			
DAM WHEELS	9,960	13,150	20,332	15,708			
DAM VIRTUAL	14,531	15,678	15,450	12,074			
BALANCING NYCA	908	(2,942)	20,554	21,561			
BALANCING NON-NYCA	15,865	2,047	(4,131)	3,504			
BALANCING WHEELS	(610)	(274)	(2,841)	(5,790)			
BALANCING VIRTUAL	(14,531)	(15,678)	(15,450)	(12,074)			



SETTLEMENTS REPORT  
 FEBRUARY 2002 CLOSEOUT SETTLEMENT  
 DECEMBER 6, 2005

**CLOSEOUT SETTLEMENT MARKET SUPPLY ANALYSIS**

	MONDAY	TUESDAY	WEDNESDAY	THURSDAY	FRIDAY	SATURDAY	SUNDAY
					1	2	3
DAM NYCA					362,342	337,484	325,348
DAM NON-NYCA					46,552	50,566	57,938
DAM WHEELS					9,239	13,700	12,800
DAM VIRTUAL					19,121	18,168	17,039
BALANCING NYCA					15,958	13,661	9,896
BALANCING NON-NYCA					10,782	1,092	401
BALANCING WHEELS					(7,639)	(8,149)	(8,000)
BALANCING VIRTUAL					(19,121)	(18,168)	(17,039)
	4	5	6	7	8	9	10
DAM NYCA	402,118	406,385	392,841	372,730	366,935	327,766	315,116
DAM NON-NYCA	43,638	46,384	40,612	54,827	54,307	48,125	45,516
DAM WHEELS	22,208	18,162	19,560	9,400	15,650	12,985	17,300
DAM VIRTUAL	7,820	7,870	17,356	17,973	12,295	21,406	20,189
BALANCING NYCA	380	11,047	8,827	11,250	10,642	15,418	19,027
BALANCING NON-NYCA	(4,866)	(880)	8,262	662	(3,473)	556	4,272
BALANCING WHEELS	(8,421)	(7,230)	(7,704)	(7,200)	(9,376)	(9,119)	(9,588)
BALANCING VIRTUAL	(7,820)	(7,870)	(17,356)	(17,973)	(12,295)	(21,406)	(20,189)
	11	12	13	14	15	16	17
DAM NYCA	387,887	386,823	383,345	384,922	359,371	314,967	315,459
DAM NON-NYCA	44,112	61,787	46,118	45,524	47,614	57,192	55,453
DAM WHEELS	11,500	11,500	11,200	14,400	11,110	9,600	9,600
DAM VIRTUAL	10,235	5,423	12,170	16,728	14,394	18,609	18,639
BALANCING NYCA	12,082	17,480	25,412	23,792	16,036	13,578	8,609
BALANCING NON-NYCA	4,656	(1,027)	(3,481)	(1,514)	8,532	282	920
BALANCING WHEELS	(9,625)	(9,675)	(4,836)	(5,280)	(5,004)	(3,900)	(4,800)
BALANCING VIRTUAL	(10,235)	(5,423)	(12,170)	(16,728)	(14,394)	(18,609)	(18,639)
	18	19	20	21	22	23	24
DAM NYCA	354,215	367,991	366,505	358,146	359,520	325,954	310,453
DAM NON-NYCA	47,595	45,248	40,928	46,506	42,331	42,309	48,141
DAM WHEELS	18,400	14,400	14,610	7,600	1,600	19,200	17,891
DAM VIRTUAL	16,614	15,140	14,938	15,960	16,236	15,804	16,091
BALANCING NYCA	11,572	11,564	7,500	11,670	18,235	15,482	12,977
BALANCING NON-NYCA	3,495	6,163	6,832	479	946	5,781	7,189
BALANCING WHEELS	(6,608)	(5,500)	(6,140)	(6,000)	0	(96)	(611)
BALANCING VIRTUAL	(16,614)	(15,140)	(14,938)	(15,960)	(16,236)	(15,804)	(16,091)
	25	26	27	28			
DAM NYCA	372,003	370,695	381,363	383,440			
DAM NON-NYCA	41,357	50,147	41,535	45,565			
DAM WHEELS	9,960	13,150	20,332	15,708			
DAM VIRTUAL	14,531	15,678	15,450	12,074			
BALANCING NYCA	918	(2,939)	20,550	21,586			
BALANCING NON-NYCA	15,865	2,047	(4,131)	3,504			
BALANCING WHEELS	(610)	(274)	(2,841)	(5,790)			
BALANCING VIRTUAL	(14,531)	(15,678)	(15,450)	(12,074)			



SETTLEMENTS REPORT  
 FEBRUARY 2002 CLOSEOUT SETTLEMENT  
 DECEMBER 6, 2005

**CLOSEOUT SETTLEMENT MARKET SUPPLY DELTA ANALYSIS**

	MONDAY	TUESDAY	WEDNESDAY	THURSDAY	FRIDAY	SATURDAY	SUNDAY
					<b>1</b>	<b>2</b>	<b>3</b>
DAM NYCA					0	0	0
DAM NON-NYCA					0	0	0
DAM WHEELS					0	0	0
DAM VIRTUAL					0	0	0
BALANCING NYCA					9	3	3
BALANCING NON-NYCA					0	0	0
BALANCING WHEELS					0	0	0
BALANCING VIRTUAL					0	0	0
	<b>4</b>	<b>5</b>	<b>6</b>	<b>7</b>	<b>8</b>	<b>9</b>	<b>10</b>
DAM NYCA	0	0	0	0	0	0	0
DAM NON-NYCA	0	0	0	0	0	0	0
DAM WHEELS	0	0	0	0	0	0	0
DAM VIRTUAL	0	0	0	0	0	0	0
BALANCING NYCA	14	(29)	25	42	11	3	1
BALANCING NON-NYCA	0	0	0	0	0	0	0
BALANCING WHEELS	0	0	0	0	0	0	0
BALANCING VIRTUAL	0	0	0	0	0	0	0
	<b>11</b>	<b>12</b>	<b>13</b>	<b>14</b>	<b>15</b>	<b>16</b>	<b>17</b>
DAM NYCA	0	0	0	0	0	0	0
DAM NON-NYCA	0	0	0	0	0	0	0
DAM WHEELS	0	0	0	0	0	0	0
DAM VIRTUAL	0	0	0	0	0	0	0
BALANCING NYCA	19	16	(6)	15	14	(7)	(1)
BALANCING NON-NYCA	0	0	0	0	0	0	0
BALANCING WHEELS	0	0	0	0	0	0	0
BALANCING VIRTUAL	0	0	0	0	0	0	0
	<b>18</b>	<b>19</b>	<b>20</b>	<b>21</b>	<b>22</b>	<b>23</b>	<b>24</b>
DAM NYCA	0	0	0	0	0	0	0
DAM NON-NYCA	0	0	0	0	0	0	0
DAM WHEELS	0	0	0	0	0	0	0
DAM VIRTUAL	0	0	0	0	0	0	0
BALANCING NYCA	3	9	7	16	(6)	11	6
BALANCING NON-NYCA	0	0	0	0	0	0	0
BALANCING WHEELS	0	0	0	0	0	0	0
BALANCING VIRTUAL	0	0	0	0	0	0	0
	<b>25</b>	<b>26</b>	<b>27</b>	<b>28</b>			
DAM NYCA	0	0	0	0			
DAM NON-NYCA	0	0	0	0			
DAM WHEELS	0	0	0	0			
DAM VIRTUAL	0	0	0	0			
BALANCING NYCA	10	4	(4)	25			
BALANCING NON-NYCA	0	0	0	0			
BALANCING WHEELS	0	0	0	0			
BALANCING VIRTUAL	0	0	0	0			

