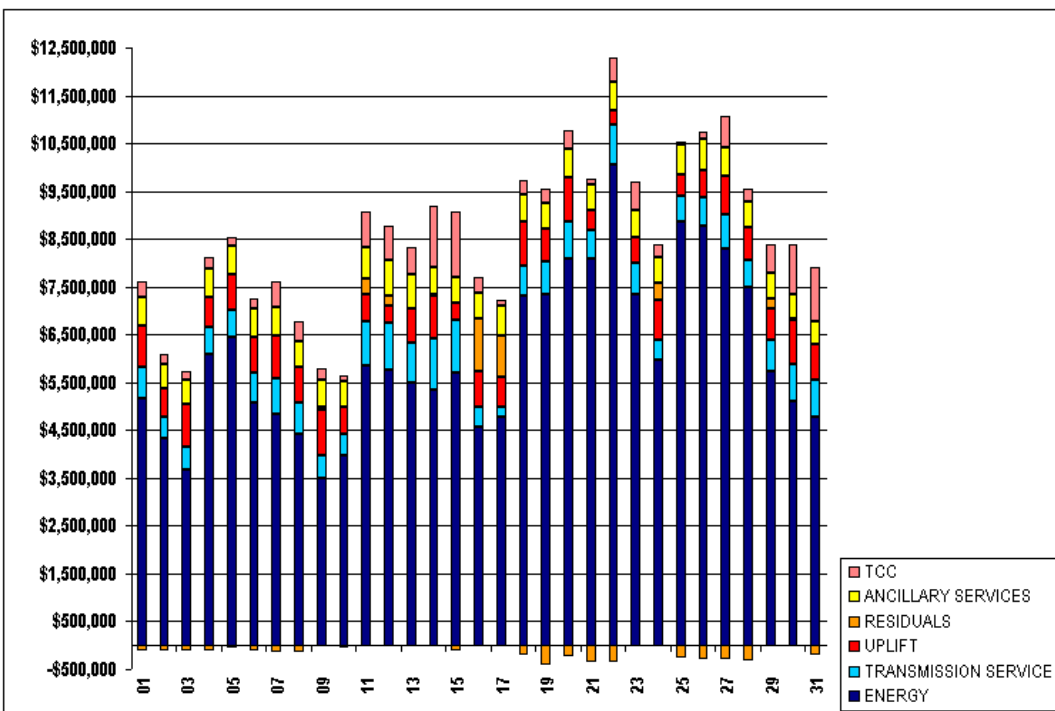


SETTLEMENTS REPORT
MARCH 2002 CLOSEOUT SETTLEMENT
DECEMBER 6, 2005

24-MONTH SETTLEMENT ADJUSTMENT MARKET COSTS

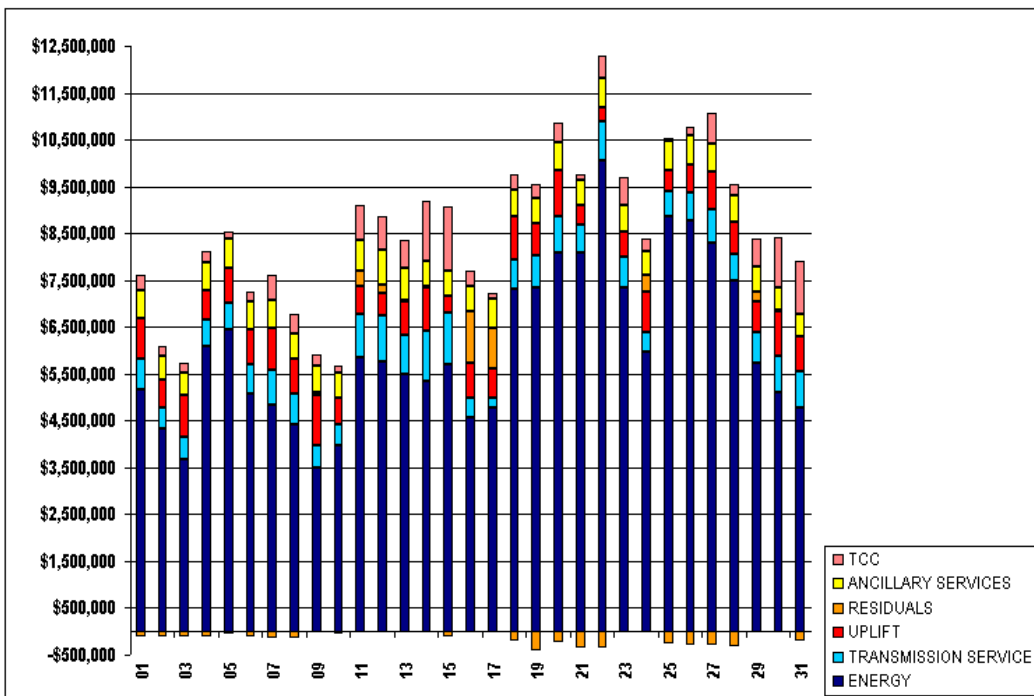
	MONDAY	TUESDAY	WEDNESDAY	THURSDAY	FRIDAY	SATURDAY	SUNDAY
					1	2	3
ENERGY					\$5,177,531.06	\$4,328,511.73	\$3,673,254.78
TRANSMISSION SERVICE					\$647,880.44	\$448,518.84	\$469,317.60
UPLIFT					\$850,725.57	\$588,149.18	\$909,599.03
RESIDUALS					(\$123,374.24)	(\$126,926.63)	(\$123,679.12)
ANCILLARY SERVICES					\$602,906.74	\$529,933.71	\$488,593.53
TCC					\$334,009.76	\$182,827.70	\$192,605.26
	4	5	6	7	8	9	10
ENERGY	\$6,078,150.56	\$6,435,828.16	\$5,077,544.83	\$4,824,277.20	\$4,410,872.99	\$3,491,424.46	\$3,957,628.16
TRANSMISSION SERVICE	\$589,589.61	\$577,535.37	\$614,649.22	\$754,138.88	\$679,260.66	\$472,123.45	\$456,509.81
UPLIFT	\$605,969.04	\$733,455.38	\$766,285.26	\$911,218.38	\$723,330.30	\$975,015.69	\$563,660.71
RESIDUALS	(\$119,886.38)	(\$62,849.45)	(\$124,834.09)	(\$138,124.39)	(\$151,581.68)	\$47,241.02	(\$60,981.19)
ANCILLARY SERVICES	\$593,143.46	\$616,016.81	\$584,437.82	\$581,541.04	\$557,704.86	\$569,626.98	\$549,000.26
TCC	\$246,945.64	\$160,664.26	\$195,613.47	\$547,632.88	\$416,253.89	\$236,262.24	\$129,583.24
	11	12	13	14	15	16	17
ENERGY	\$5,845,012.65	\$5,751,788.23	\$5,490,445.45	\$5,357,122.47	\$5,689,771.80	\$4,561,731.79	\$4,767,386.03
TRANSMISSION SERVICE	\$942,708.46	\$985,111.79	\$832,246.47	\$1,049,833.81	\$1,108,344.94	\$416,404.85	\$227,848.03
UPLIFT	\$562,482.45	\$376,970.86	\$720,994.46	\$910,866.37	\$371,494.15	\$751,204.94	\$613,074.52
RESIDUALS	\$320,426.11	\$188,828.96	\$12,645.17	\$16,674.65	(\$121,101.17)	\$1,103,763.91	\$888,020.72
ANCILLARY SERVICES	\$664,582.37	\$743,873.74	\$703,698.92	\$566,089.54	\$537,150.05	\$540,840.05	\$639,321.77
TCC	\$742,858.01	\$735,966.75	\$568,394.34	\$1,284,112.12	\$1,364,904.36	\$339,429.50	\$119,941.27
	18	19	20	21	22	23	24
ENERGY	\$7,310,182.72	\$7,336,129.48	\$8,086,642.89	\$8,084,028.61	\$10,054,176.08	\$7,352,547.12	\$5,980,625.12
TRANSMISSION SERVICE	\$639,085.04	\$691,193.95	\$772,558.06	\$605,646.65	\$846,048.33	\$639,766.98	\$392,913.60
UPLIFT	\$901,152.73	\$679,743.79	\$931,055.08	\$397,860.67	\$289,925.28	\$546,541.07	\$862,206.07
RESIDUALS	(\$214,834.37)	(\$406,198.84)	(\$228,787.62)	(\$348,888.74)	(\$346,322.76)	(\$2,829.15)	\$359,390.31
ANCILLARY SERVICES	\$570,822.21	\$553,950.04	\$585,649.83	\$546,907.02	\$608,385.46	\$557,004.66	\$517,871.25
TCC	\$306,889.23	\$286,093.81	\$408,666.47	\$118,605.47	\$499,310.39	\$604,773.23	\$262,923.26
	25	26	27	28	29	30	31
ENERGY	\$8,851,426.97	\$8,775,125.87	\$8,309,060.35	\$7,487,453.57	\$5,737,491.76	\$5,116,886.50	\$4,774,898.74
TRANSMISSION SERVICE	\$560,030.68	\$580,222.63	\$699,462.57	\$581,957.19	\$646,748.35	\$768,409.78	\$776,580.84
UPLIFT	\$440,210.49	\$572,563.59	\$799,816.07	\$673,581.96	\$658,213.07	\$920,028.64	\$751,279.43
RESIDUALS	(\$273,085.31)	(\$290,534.68)	(\$286,705.03)	(\$324,049.11)	\$209,047.26	\$28,277.87	(\$194,012.75)
ANCILLARY SERVICES	\$615,387.89	\$651,734.22	\$593,839.06	\$551,074.28	\$524,483.96	\$496,472.81	\$484,120.53
TCC	\$72,892.22	\$162,294.89	\$659,627.05	\$253,480.08	\$605,553.84	\$1,061,793.53	\$1,115,179.54



SETTLEMENTS REPORT
MARCH 2002 CLOSEOUT SETTLEMENT
DECEMBER 6, 2005

CLOSEOUT SETTLEMENT MARKET COSTS

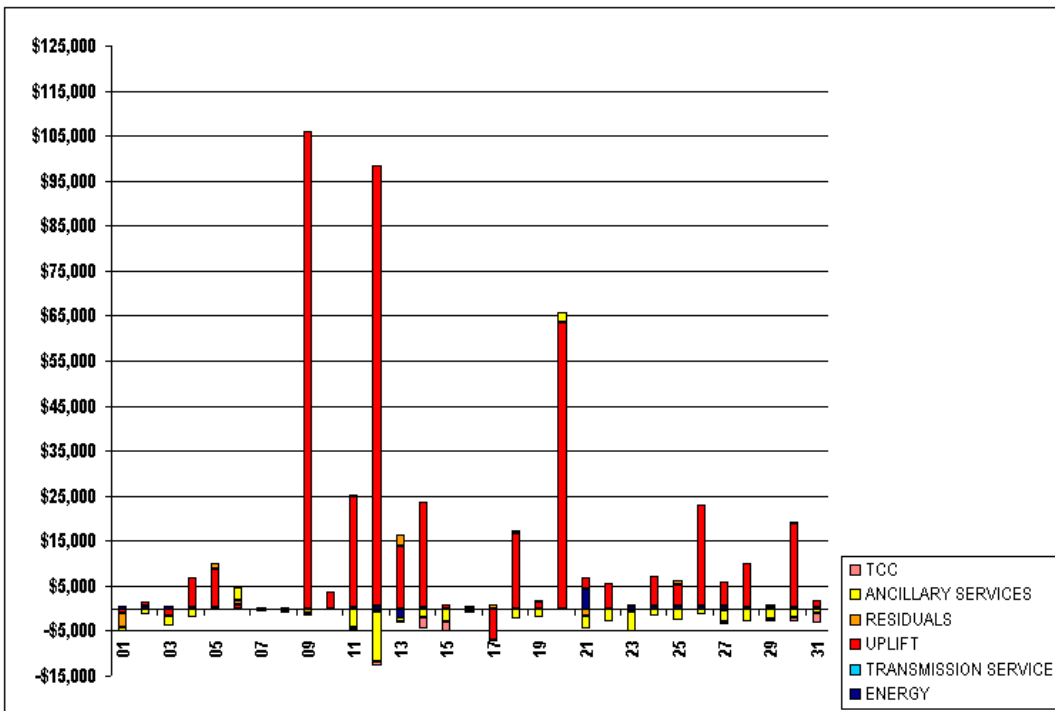
	MONDAY	TUESDAY	WEDNESDAY	THURSDAY	FRIDAY	SATURDAY	SUNDAY
					1	2	3
ENERGY					\$5,178,068.25	\$4,329,051.58	\$3,673,932.29
TRANSMISSION SERVICE					\$647,811.83	\$448,443.92	\$469,246.21
UPLIFT					\$849,763.39	\$588,940.61	\$908,098.44
RESIDUALS					(\$126,661.77)	(\$126,737.59)	(\$123,741.84)
ANCILLARY SERVICES					\$601,961.71	\$528,769.52	\$486,358.43
TCC					\$333,960.94	\$182,774.33	\$192,603.10
	4	5	6	7	8	9	10
ENERGY	\$6,078,368.90	\$6,435,971.56	\$5,077,544.78	\$4,824,201.98	\$4,410,872.86	\$3,491,424.72	\$3,957,629.16
TRANSMISSION SERVICE	\$589,532.62	\$577,480.17	\$614,583.94	\$754,076.54	\$679,198.26	\$472,052.70	\$456,452.22
UPLIFT	\$612,635.52	\$742,136.71	\$767,171.82	\$911,482.45	\$723,333.66	\$1,081,043.99	\$567,270.84
RESIDUALS	(\$119,830.18)	(\$61,518.15)	(\$123,925.89)	(\$138,312.43)	(\$151,431.85)	\$46,133.75	(\$60,808.65)
ANCILLARY SERVICES	\$591,151.86	\$615,494.34	\$587,232.61	\$581,411.14	\$557,076.22	\$569,343.25	\$548,943.35
TCC	\$246,968.20	\$160,687.78	\$195,476.34	\$547,437.46	\$415,894.42	\$236,078.54	\$129,583.24
	11	12	13	14	15	16	17
ENERGY	\$5,845,082.55	\$5,752,374.31	\$5,488,384.88	\$5,357,316.42	\$5,689,792.51	\$4,561,731.65	\$4,767,386.96
TRANSMISSION SERVICE	\$942,653.24	\$985,062.70	\$832,160.99	\$1,049,784.49	\$1,108,290.82	\$416,335.05	\$227,782.78
UPLIFT	\$587,284.38	\$474,706.48	\$734,890.66	\$934,413.13	\$372,178.66	\$751,534.86	\$606,036.93
RESIDUALS	\$320,657.02	\$188,041.33	\$15,068.44	\$16,533.47	(\$120,880.78)	\$1,103,955.52	\$868,808.37
ANCILLARY SERVICES	\$660,469.49	\$732,779.13	\$702,976.99	\$564,295.68	\$534,315.79	\$540,064.31	\$639,015.74
TCC	\$742,034.23	\$735,236.29	\$568,097.40	\$1,281,392.46	\$1,362,611.00	\$339,083.15	\$119,831.96
	18	19	20	21	22	23	24
ENERGY	\$7,310,182.92	\$7,336,131.58	\$8,086,644.73	\$8,088,358.86	\$10,054,175.46	\$7,353,010.52	\$5,981,083.74
TRANSMISSION SERVICE	\$639,024.97	\$691,135.67	\$772,498.31	\$605,642.45	\$845,988.86	\$639,707.55	\$392,857.23
UPLIFT	\$917,875.10	\$681,317.76	\$994,460.77	\$400,260.42	\$295,500.70	\$546,174.82	\$869,064.79
RESIDUALS	(\$214,188.50)	(\$406,088.75)	(\$228,552.38)	(\$350,637.38)	(\$346,412.08)	(\$3,202.68)	\$359,202.09
ANCILLARY SERVICES	\$568,702.24	\$552,140.80	\$587,822.10	\$544,204.03	\$605,610.37	\$552,532.01	\$516,385.09
TCC	\$306,835.33	\$286,090.66	\$408,609.77	\$118,589.37	\$499,301.64	\$605,187.56	\$262,892.81
	25	26	27	28	29	30	31
ENERGY	\$8,851,918.92	\$8,775,687.19	\$8,309,484.56	\$7,487,778.19	\$5,737,802.86	\$5,117,070.58	\$4,775,090.35
TRANSMISSION SERVICE	\$559,979.69	\$580,178.48	\$699,418.41	\$581,905.87	\$646,698.06	\$768,356.45	\$776,528.64
UPLIFT	\$445,086.78	\$594,886.36	\$805,221.31	\$683,372.45	\$658,795.32	\$938,670.50	\$753,028.40
RESIDUALS	(\$272,282.71)	(\$290,615.57)	(\$287,234.31)	(\$324,170.53)	\$208,962.48	\$28,504.75	(\$194,134.78)
ANCILLARY SERVICES	\$612,749.34	\$650,532.15	\$591,310.52	\$548,437.07	\$522,211.27	\$494,383.76	\$483,123.54
TCC	\$72,860.37	\$162,153.49	\$659,138.14	\$253,325.29	\$604,886.81	\$1,061,091.87	\$1,112,958.52



SETTLEMENTS REPORT
MARCH 2002 CLOSEOUT SETTLEMENT
DECEMBER 6, 2005

CLOSEOUT SETTLEMENT MARKET COSTS DELTA

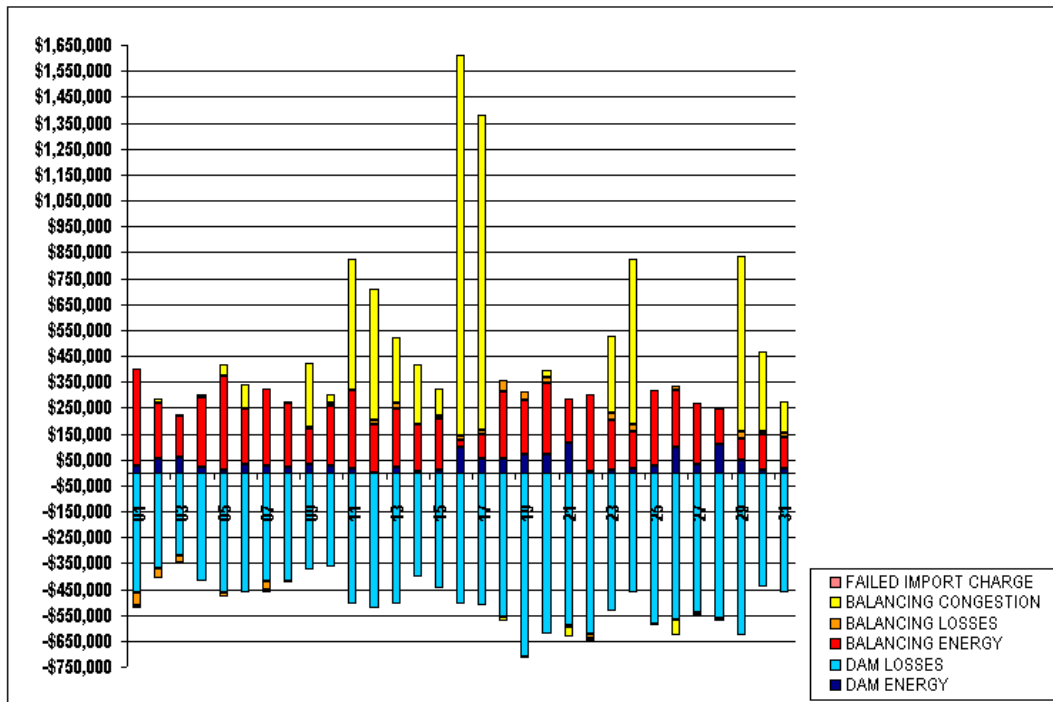
	MONDAY	TUESDAY	WEDNESDAY	THURSDAY	FRIDAY	SATURDAY	SUNDAY
					1	2	3
ENERGY					\$537.19	\$539.85	\$677.51
TRANSMISSION SERVICE					(\$68.61)	(\$74.92)	(\$71.39)
UPLIFT					(\$962.18)	\$791.43	(\$1,500.59)
RESIDUALS					(\$3,287.53)	\$189.04	(\$62.72)
ANCILLARY SERVICES					(\$945.03)	(\$1,164.19)	(\$2,235.10)
TCC					(\$58.82)	(\$53.37)	(\$2.16)
					8	9	10
ENERGY	\$218.34	\$143.40	(\$0.05)	(\$75.22)	(\$0.13)	\$0.26	\$1.00
TRANSMISSION SERVICE	(\$56.99)	(\$55.20)	(\$65.28)	(\$62.34)	(\$62.40)	(\$70.75)	(\$57.59)
UPLIFT	\$6,666.48	\$8,681.33	\$886.56	\$264.07	\$3.36	\$106,028.30	\$3,610.13
RESIDUALS	\$56.20	\$1,331.30	\$908.20	(\$188.04)	\$149.83	(\$1,107.27)	\$172.54
ANCILLARY SERVICES	(\$1,991.60)	(\$522.47)	\$2,794.79	(\$129.90)	(\$628.64)	(\$283.73)	(\$56.91)
TCC	\$22.56	\$23.52	(\$137.13)	(\$195.42)	(\$359.47)	(\$183.70)	\$0.00
					15	16	17
ENERGY	\$69.90	\$586.08	(\$2,060.57)	\$193.95	\$20.71	(\$0.14)	\$0.93
TRANSMISSION SERVICE	(\$55.22)	(\$49.09)	(\$85.48)	(\$49.32)	(\$54.12)	(\$69.80)	(\$65.25)
UPLIFT	\$24,801.93	\$97,735.62	\$13,896.20	\$23,546.76	\$684.51	\$329.92	(\$7,037.59)
RESIDUALS	\$230.91	(\$787.63)	\$2,423.27	(\$141.18)	\$220.39	\$191.61	\$787.65
ANCILLARY SERVICES	(\$4,112.88)	(\$11,094.61)	(\$721.93)	(\$1,793.86)	(\$2,834.26)	(\$775.74)	(\$306.03)
TCC	(\$823.78)	(\$730.46)	(\$296.94)	(\$2,719.66)	(\$2,293.36)	(\$346.35)	(\$109.31)
					22	23	24
ENERGY	\$0.20	\$2.10	\$1.84	\$4,330.25	(\$0.62)	\$463.40	\$458.62
TRANSMISSION SERVICE	(\$60.07)	(\$58.28)	(\$59.75)	(\$4.20)	(\$59.47)	(\$59.43)	(\$56.37)
UPLIFT	\$16,722.37	\$1,573.97	\$63,405.69	\$2,399.75	\$5,575.42	(\$366.25)	\$6,858.72
RESIDUALS	\$645.87	\$110.09	\$235.24	(\$1,748.64)	(\$89.32)	(\$373.53)	(\$188.22)
ANCILLARY SERVICES	(\$2,119.97)	(\$1,809.24)	\$2,172.27	(\$2,702.99)	(\$2,775.09)	(\$4,472.65)	(\$1,486.16)
TCC	(\$53.90)	(\$3.15)	(\$56.70)	(\$16.10)	(\$8.75)	\$414.33	(\$30.45)
					29	30	31
ENERGY	\$491.95	\$561.32	\$424.21	\$324.62	\$311.10	\$184.08	\$191.61
TRANSMISSION SERVICE	(\$50.99)	(\$44.15)	(\$44.16)	(\$51.32)	(\$50.29)	(\$53.33)	(\$52.20)
UPLIFT	\$4,876.29	\$22,322.77	\$5,405.24	\$9,790.49	\$582.25	\$18,641.86	\$1,748.97
RESIDUALS	\$802.60	(\$80.89)	(\$529.28)	(\$121.42)	(\$84.78)	\$226.88	(\$122.03)
ANCILLARY SERVICES	(\$2,638.55)	(\$1,202.07)	(\$2,528.54)	(\$2,637.21)	(\$2,272.69)	(\$2,089.05)	(\$996.99)
TCC	(\$31.85)	(\$141.40)	(\$488.91)	(\$154.79)	(\$667.03)	(\$701.66)	(\$2,221.02)



SETTLEMENTS REPORT
MARCH 2002 CLOSEOUT SETTLEMENT
DECEMBER 6, 2005

24-MONTH SETTLEMENT ADJUSTMENT MARKET RESIDUALS

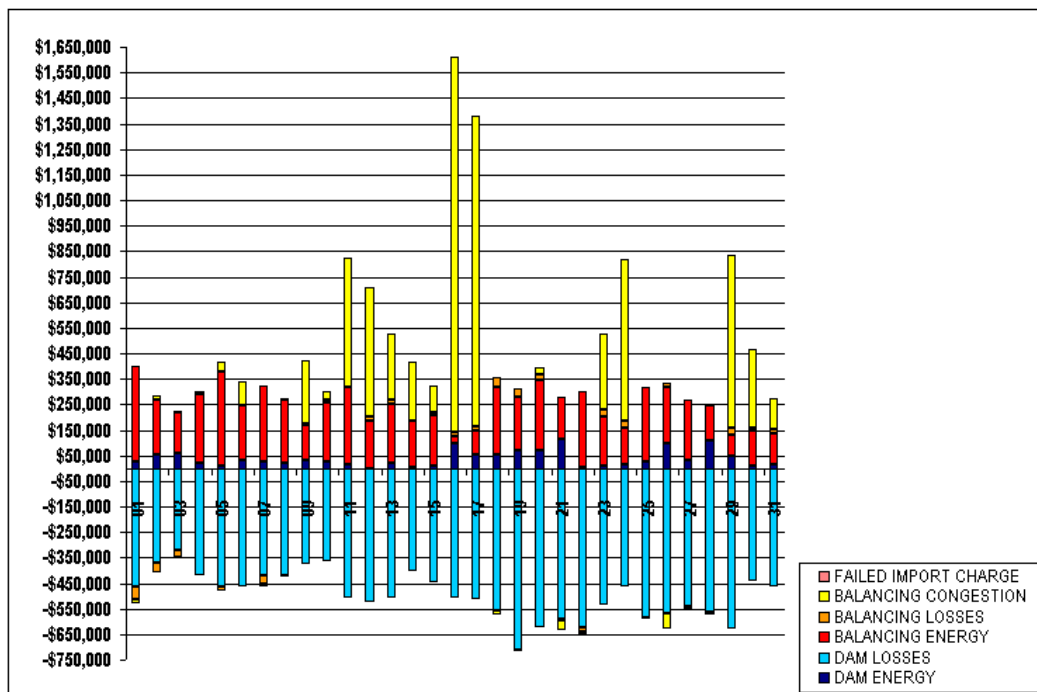
	MONDAY	TUESDAY	WEDNESDAY	THURSDAY	FRIDAY	SATURDAY	SUNDAY
DAM ENERGY					1	2	3
DAM LOSSES					\$25,569.71	\$51,680.66	\$61,122.66
BALANCING ENERGY					(\$461,229.44)	(\$371,239.06)	(\$321,202.44)
BALANCING LOSSES					\$374,767.44	\$218,351.31	\$158,150.82
BALANCING CONGESTION					(\$53,420.89)	(\$38,851.07)	(\$26,441.83)
FAILED IMPORT CHARGE					(\$10,344.62)	\$13,037.12	\$4,639.30
					\$0.00	\$0.00	\$0.00
	4	5	6	7	8	9	10
DAM ENERGY	\$18,796.27	\$9,568.67	\$30,197.52	\$25,936.69	\$20,934.52	\$32,594.65	\$28,786.56
DAM LOSSES	(\$421,596.67)	(\$464,328.30)	(\$465,098.99)	(\$421,504.43)	(\$420,850.67)	(\$374,688.20)	(\$363,917.36)
BALANCING ENERGY	\$274,197.44	\$365,846.97	\$214,402.92	\$298,355.85	\$249,892.19	\$136,686.54	\$230,833.02
BALANCING LOSSES	(\$695.65)	(\$16,571.61)	\$3,366.60	(\$30,762.58)	(\$4,921.06)	\$5,490.89	\$10,054.70
BALANCING CONGESTION	\$9,092.05	\$41,592.38	\$91,206.74	(\$10,468.00)	\$3,327.13	\$246,858.33	\$32,673.03
FAILED IMPORT CHARGE	\$0.00	\$0.00	\$0.00	\$0.00	\$0.00	\$0.00	\$0.00
	11	12	13	14	15	16	17
DAM ENERGY	\$17,381.60	(\$2,386.68)	\$18,065.74	\$4,926.04	\$9,682.80	\$98,431.02	\$56,160.16
DAM LOSSES	(\$506,029.83)	(\$520,552.80)	(\$509,618.58)	(\$402,407.36)	(\$446,836.90)	(\$505,873.85)	(\$510,643.12)
BALANCING ENERGY	\$302,425.44	\$188,365.38	\$230,559.22	\$178,235.28	\$195,779.58	\$25,215.53	\$88,617.00
BALANCING LOSSES	(\$284.40)	\$15,893.42	\$18,560.28	\$2,580.34	\$14,919.95	\$17,619.96	\$16,714.84
BALANCING CONGESTION	\$504,117.77	\$506,575.67	\$254,726.12	\$233,255.10	\$105,253.01	\$1,468,214.53	\$1,216,995.72
FAILED IMPORT CHARGE	\$0.00	\$0.00	\$0.00	\$0.00	\$0.00	\$0.00	\$0.00
	18	19	20	21	22	23	24
DAM ENERGY	\$53,550.96	\$68,083.82	\$71,402.68	\$114,192.98	\$4,518.20	\$11,191.68	\$15,360.19
DAM LOSSES	(\$555,176.06)	(\$711,574.91)	(\$624,193.41)	(\$589,435.41)	(\$622,900.52)	(\$532,754.44)	(\$462,452.74)
BALANCING ENERGY	\$261,252.22	\$211,221.02	\$272,666.91	\$168,119.70	\$299,099.52	\$191,472.65	\$143,800.30
BALANCING LOSSES	\$41,874.85	\$31,018.38	\$25,419.26	(\$4,367.04)	(\$14,297.77)	\$24,642.58	\$24,794.29
BALANCING CONGESTION	(\$16,735.65)	(\$5,135.68)	\$25,415.51	(\$37,928.84)	(\$12,954.47)	\$302,131.82	\$637,723.53
FAILED IMPORT CHARGE	\$0.00	\$0.00	\$0.00	\$0.00	\$0.00	\$0.00	\$0.00
	25	26	27	28	29	30	31
DAM ENERGY	\$28,483.03	\$98,560.21	\$33,627.71	\$108,371.19	\$49,170.49	\$10,405.18	\$15,384.22
DAM LOSSES	(\$583,118.89)	(\$566,620.40)	(\$543,428.26)	(\$560,110.39)	(\$628,945.13)	(\$440,072.11)	(\$466,380.97)
BALANCING ENERGY	\$289,319.81	\$217,634.16	\$232,848.84	\$139,526.73	\$80,946.47	\$137,553.75	\$119,781.40
BALANCING LOSSES	(\$297.71)	\$19,856.58	(\$9,942.45)	(\$6,638.16)	\$28,643.41	\$8,318.39	\$17,681.15
BALANCING CONGESTION	(\$8,200.04)	(\$60,369.10)	(\$353.81)	(\$5,573.55)	\$679,108.98	\$311,577.97	\$119,371.88
FAILED IMPORT CHARGE	\$0.00	\$0.00	\$0.00	\$0.00	\$0.00	\$0.00	\$0.00



SETTLEMENTS REPORT
MARCH 2002 CLOSEOUT SETTLEMENT
DECEMBER 6, 2005

CLOSEOUT SETTLEMENT MARKET RESIDUALS ANALYSIS

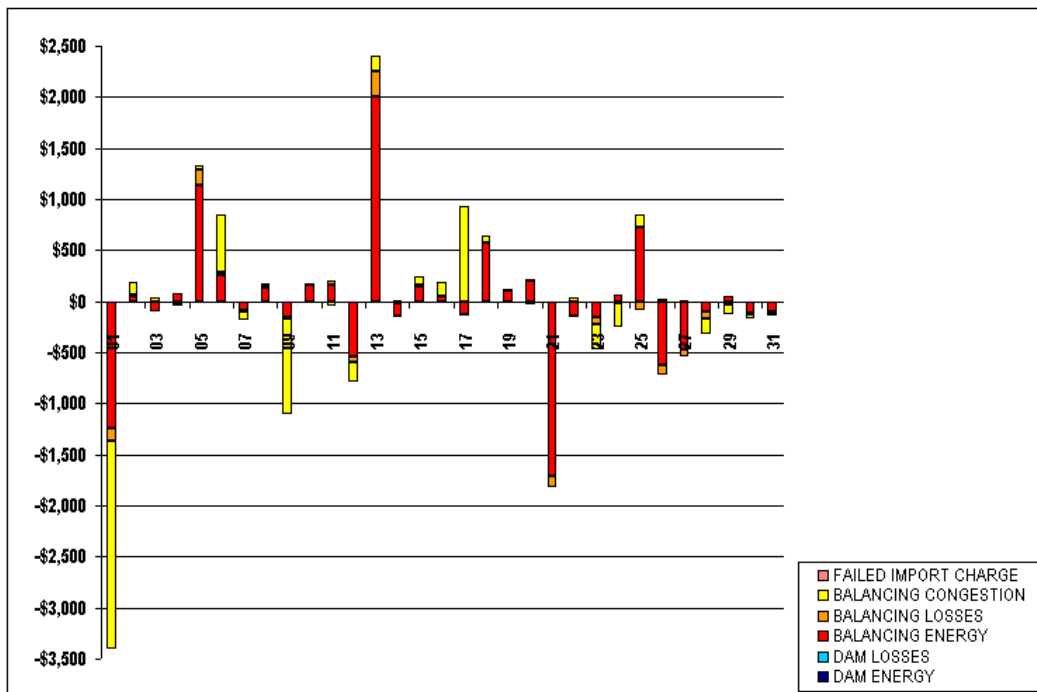
	HONDAY	TUESDAY	WEDNESDAY	THURSDAY	FRIDAY	SATURDAY	SUNDAY
					1	2	3
DAM ENERGY					\$25,569.71	\$51,680.66	\$61,122.66
DAM LOSSES					(\$461,229.44)	(\$371,239.06)	(\$321,202.44)
BALANCING ENERGY					\$373,526.08	\$218,403.50	\$158,055.89
BALANCING LOSSES					(\$53,545.38)	(\$38,840.90)	(\$26,450.69)
BALANCING CONGESTION					(\$12,383.64)	\$13,163.77	\$4,669.55
FAILED IMPORT CHARGE					\$0.00	\$0.00	\$0.00
	4	5	6	7	8	9	10
DAM ENERGY	\$18,796.63	\$9,568.73	\$30,197.52	\$25,936.69	\$20,934.88	\$32,594.65	\$28,786.56
DAM LOSSES	(\$421,600.65)	(\$464,331.36)	(\$465,098.99)	(\$421,504.43)	(\$420,869.48)	(\$374,688.20)	(\$363,917.36)
BALANCING ENERGY	\$274,268.83	\$366,982.93	\$214,661.40	\$298,269.75	\$250,031.20	\$136,525.37	\$230,996.87
BALANCING LOSSES	(\$711.76)	(\$16,422.86)	\$3,393.09	(\$30,777.09)	(\$4,906.64)	\$5,476.00	\$10,063.27
BALANCING CONGESTION	\$9,068.66	\$41,635.80	\$91,773.20	(\$10,555.44)	\$3,341.97	\$245,927.00	\$32,672.97
FAILED IMPORT CHARGE	\$0.00	\$0.00	\$0.00	\$0.00	\$0.00	\$0.00	\$0.00
	11	12	13	14	15	16	17
DAM ENERGY	\$17,381.60	(\$2,386.68)	\$18,065.77	\$4,926.15	\$9,683.43	\$98,431.02	\$56,160.16
DAM LOSSES	(\$506,029.83)	(\$520,552.80)	(\$509,619.89)	(\$402,419.02)	(\$446,861.01)	(\$505,873.85)	(\$510,643.12)
BALANCING ENERGY	\$302,591.22	\$187,827.82	\$232,564.44	\$178,105.57	\$195,919.08	\$25,268.80	\$88,483.49
BALANCING LOSSES	(\$252.66)	\$15,837.28	\$18,805.95	\$2,566.45	\$14,934.75	\$17,623.16	\$16,706.79
BALANCING CONGESTION	\$504,073.07	\$506,379.81	\$254,884.05	\$233,261.39	\$105,342.55	\$1,468,349.61	\$1,217,924.86
FAILED IMPORT CHARGE	\$0.00	\$0.00	\$0.00	\$0.00	\$0.00	\$0.00	\$0.00
	18	19	20	21	22	23	24
DAM ENERGY	\$53,551.73	\$68,084.81	\$71,402.96	\$114,192.98	\$4,518.20	\$11,191.68	\$15,361.13
DAM LOSSES	(\$555,179.91)	(\$711,538.52)	(\$524,198.40)	(\$589,435.41)	(\$622,900.52)	(\$532,754.44)	(\$462,461.08)
BALANCING ENERGY	\$261,822.29	\$211,326.71	\$272,865.73	\$166,403.90	\$298,959.92	\$191,313.69	\$143,867.56
BALANCING LOSSES	\$41,883.28	\$31,029.19	\$25,435.65	(\$4,471.78)	(\$14,309.54)	\$24,575.99	\$24,781.80
BALANCING CONGESTION	(\$16,674.99)	(\$5,129.86)	\$25,388.83	(\$37,928.89)	(\$12,915.63)	\$301,880.69	\$637,487.88
FAILED IMPORT CHARGE	\$0.00	\$0.00	\$0.00	\$0.00	\$0.00	\$0.00	\$0.00
	25	26	27	28	29	30	31
DAM ENERGY	\$28,483.07	\$98,560.34	\$33,627.82	\$108,371.39	\$49,171.17	\$10,405.18	\$15,384.22
DAM LOSSES	(\$583,120.23)	(\$566,624.49)	(\$543,429.86)	(\$560,114.89)	(\$628,964.78)	(\$440,072.11)	(\$466,380.97)
BALANCING ENERGY	\$290,047.90	\$217,020.16	\$232,373.57	\$139,431.32	\$80,990.32	\$137,434.64	\$119,674.71
BALANCING LOSSES	(\$384.92)	\$19,748.19	(\$10,009.52)	(\$6,701.93)	\$28,629.27	\$8,311.31	\$17,671.40
BALANCING CONGESTION	(\$8,074.09)	(\$60,348.22)	(\$339.93)	(\$5,725.64)	\$679,013.42	\$311,532.76	\$119,342.45
FAILED IMPORT CHARGE	\$0.00	\$0.00	\$0.00	\$0.00	\$0.00	\$0.00	\$0.00



SETTLEMENTS REPORT
MARCH 2002 CLOSEOUT SETTLEMENT
DECEMBER 6, 2005

CLOSEOUT SETTLEMENT MARKET RESIDUALS DELTA ANALYSIS

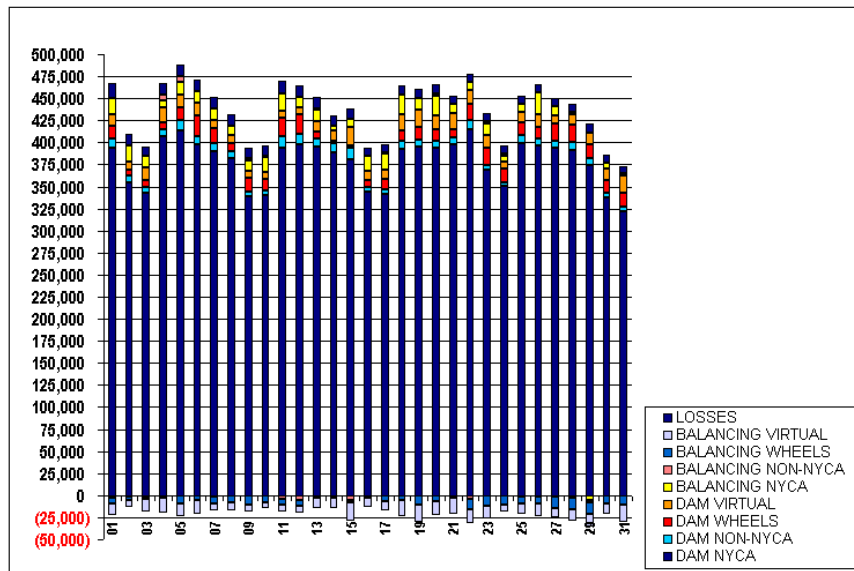
	MONDAY	TUESDAY	WEDNESDAY	THURSDAY	FRIDAY	SATURDAY	SUNDAY
DAM ENERGY					1	2	3
DAM LOSSES					\$0.00	\$0.00	\$0.00
BALANCING ENERGY					(\$1,241.36)	\$52.19	(\$94.93)
BALANCING LOSSES					(\$124.49)	\$10.17	(\$8.86)
BALANCING CONGESTION					(\$2,039.02)	\$126.65	\$30.25
FAILED IMPORT CHARGE					\$0.00	\$0.00	\$0.00
	4	5	6	7	8	9	10
DAM ENERGY	\$0.36	\$0.06	\$0.00	\$0.00	\$0.36	\$0.00	\$0.00
DAM LOSSES	(\$3.98)	(\$3.06)	\$0.00	\$0.00	(\$18.81)	\$0.00	\$0.00
BALANCING ENERGY	\$71.39	\$1,135.96	\$258.48	(\$86.10)	\$139.01	(\$161.17)	\$163.85
BALANCING LOSSES	(\$16.11)	\$148.75	\$26.49	(\$14.51)	\$14.42	(\$14.89)	\$8.57
BALANCING CONGESTION	(\$23.39)	\$43.42	\$566.46	(\$87.44)	\$14.84	(\$931.33)	(\$0.06)
FAILED IMPORT CHARGE	\$0.00	\$0.00	\$0.00	\$0.00	\$0.00	\$0.00	\$0.00
	11	12	13	14	15	16	17
DAM ENERGY	\$0.00	\$0.00	\$0.03	\$0.11	\$0.63	\$0.00	\$0.00
DAM LOSSES	\$0.00	\$0.00	(\$1.31)	(\$11.66)	(\$24.11)	\$0.00	\$0.00
BALANCING ENERGY	\$166.78	(\$537.56)	\$2,005.22	(\$129.71)	\$139.60	\$53.27	(\$133.51)
BALANCING LOSSES	\$31.74	(\$56.14)	\$245.67	(\$13.89)	\$14.80	\$3.20	(\$8.05)
BALANCING CONGESTION	(\$44.70)	(\$195.86)	\$157.93	\$6.29	\$89.54	\$135.08	\$929.14
FAILED IMPORT CHARGE	\$0.00	\$0.00	\$0.00	\$0.00	\$0.00	\$0.00	\$0.00
	18	19	20	21	22	23	24
DAM ENERGY	\$0.77	\$0.99	\$0.28	\$0.00	\$0.00	\$0.00	\$0.94
DAM LOSSES	(\$3.85)	(\$13.61)	(\$4.99)	\$0.00	\$0.00	\$0.00	(\$8.34)
BALANCING ENERGY	\$570.07	\$105.69	\$198.82	(\$1,715.80)	(\$139.60)	(\$158.96)	\$67.26
BALANCING LOSSES	\$8.43	\$10.81	\$16.39	(\$104.74)	(\$11.77)	(\$66.59)	(\$12.49)
BALANCING CONGESTION	\$60.66	\$5.82	(\$26.68)	(\$0.05)	\$38.84	(\$251.13)	(\$235.65)
FAILED IMPORT CHARGE	\$0.00	\$0.00	\$0.00	\$0.00	\$0.00	\$0.00	\$0.00
	25	26	27	28	29	30	31
DAM ENERGY	\$0.04	\$0.13	\$0.11	\$0.20	\$0.68	\$0.00	\$0.00
DAM LOSSES	(\$1.34)	(\$4.09)	(\$1.60)	(\$4.50)	(\$19.65)	\$0.00	\$0.00
BALANCING ENERGY	\$728.09	(\$614.00)	(\$475.27)	(\$95.41)	\$43.85	(\$119.11)	(\$106.69)
BALANCING LOSSES	(\$87.21)	(\$108.39)	(\$67.07)	(\$63.77)	(\$14.14)	(\$7.08)	(\$9.75)
BALANCING CONGESTION	\$125.95	\$20.88	\$13.88	(\$152.09)	(\$95.56)	(\$45.21)	(\$29.43)
FAILED IMPORT CHARGE	\$0.00	\$0.00	\$0.00	\$0.00	\$0.00	\$0.00	\$0.00



SETTLEMENTS REPORT
MARCH 2002 CLOSEOUT SETTLEMENT
DECEMBER 6, 2005

24-MONTH SETTLEMENT ADJUSTMENT MARKET WITHDRAWALS ANALYSIS

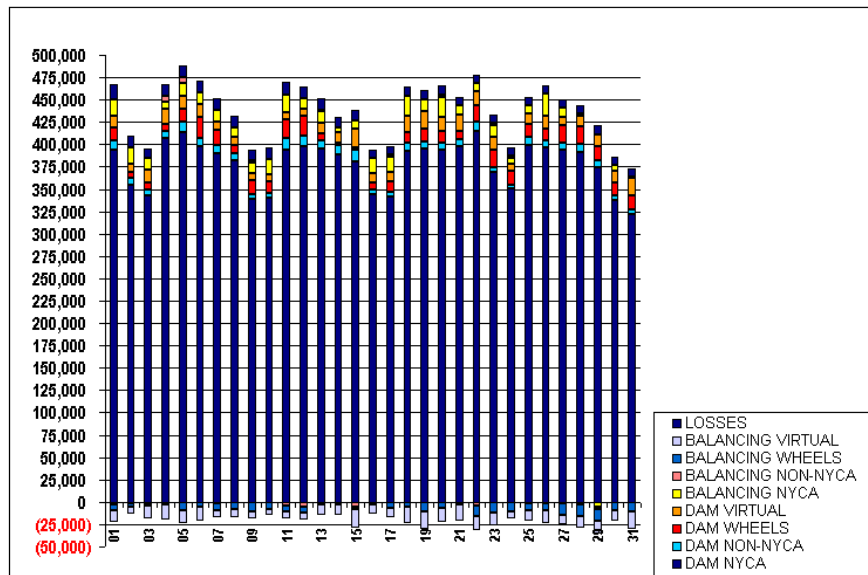
	HONDAY	TUESDAY	WEDNESDAY	THURSDAY	FRIDAY	SATURDAY	SUNDAY
					1	2	3
DAM NYCA					393,697	354,698	342,693
DAM NON-NYCA					10,306	7,291	7,138
DAM WHEELS					15,260	7,200	8,000
DAM VIRTUAL					13,206	8,635	13,651
BALANCING NYCA					18,312	18,788	12,967
BALANCING NON-NYCA					(3,150)	(1,996)	(1,245)
BALANCING WHEELS					(6,050)	(3,000)	(3,200)
BALANCING VIRTUAL					(13,206)	(8,635)	(13,651)
UFELLOSSES					16,127	12,768	11,213
	4	5	6	7	8	9	10
DAM NYCA	407,626	413,867	397,898	389,729	382,255	338,909	340,346
DAM NON-NYCA	7,841	11,595	9,444	9,197	7,976	4,989	5,525
DAM WHEELS	7,000	13,960	23,450	17,450	9,300	15,873	13,000
DAM VIRTUAL	17,017	14,660	14,794	8,754	9,189	8,001	6,954
BALANCING NYCA	8,023	14,287	12,688	13,237	10,246	11,479	17,548
BALANCING NON-NYCA	6,404	6,387	(621)	(1,270)	115	3,130	847
BALANCING WHEELS	(2,800)	(9,776)	(5,500)	(7,600)	(7,700)	(10,873)	(7,800)
BALANCING VIRTUAL	(17,017)	(14,660)	(14,794)	(8,754)	(9,189)	(8,001)	(6,954)
UFELLOSSES	12,731	13,904	12,877	13,459	13,163	11,742	11,722
	11	12	13	14	15	16	17
DAM NYCA	394,238	397,528	396,636	388,974	381,012	344,006	341,851
DAM NON-NYCA	12,399	11,716	8,821	9,846	12,493	5,038	4,738
DAM WHEELS	21,838	22,959	7,778	2,900	3,500	8,135	12,203
DAM VIRTUAL	7,410	7,853	12,116	11,913	20,667	10,279	9,795
BALANCING NYCA	19,891	11,963	12,643	4,771	9,353	16,811	18,216
BALANCING NON-NYCA	(3,747)	(5,286)	1,617	(1,750)	(5,389)	1,078	1,524
BALANCING WHEELS	(7,193)	(6,754)	(2,800)	(1,150)	(3,210)	(3,335)	(7,291)
BALANCING VIRTUAL	(7,410)	(7,853)	(12,116)	(11,913)	(20,667)	(10,279)	(9,795)
UFELLOSSES	13,619	12,338	12,553	11,905	11,326	8,467	8,959
	18	19	20	21	22	23	24
DAM NYCA	393,229	394,840	394,259	397,482	414,455	368,444	350,395
DAM NON-NYCA	8,570	8,111	8,043	7,995	10,589	5,248	4,618
DAM WHEELS	11,500	13,997	11,841	9,528	18,639	20,742	15,991
DAM VIRTUAL	18,727	20,649	16,101	18,228	15,087	13,899	7,738
BALANCING NYCA	22,455	12,260	22,085	10,160	9,423	13,281	6,587
BALANCING NON-NYCA	(292)	300	2,604	214	(3,880)	2,538	2,526
BALANCING WHEELS	(5,399)	(10,259)	(6,848)	(3,200)	(12,189)	(12,297)	(11,341)
BALANCING VIRTUAL	(18,727)	(20,649)	(16,101)	(18,228)	(15,087)	(13,899)	(7,738)
UFELLOSSES	10,378	10,174	10,702	9,495	9,210	9,221	8,755
	25	26	27	28	29	30	31
DAM NYCA	399,556	396,346	394,354	391,521	374,469	337,225	322,450
DAM NON-NYCA	9,161	8,615	8,044	9,394	8,110	5,238	5,189
DAM WHEELS	13,865	12,869	18,377	18,685	15,742	15,196	15,790
DAM VIRTUAL	11,604	14,483	9,942	12,745	13,231	12,078	19,391
BALANCING NYCA	9,135	25,098	10,317	1,820	(6,017)	6,698	1,442
BALANCING NON-NYCA	(1,197)	(1,650)	(2,200)	(3,372)	(2,600)	265	276
BALANCING WHEELS	(7,817)	(8,024)	(12,529)	(12,287)	(13,098)	(9,296)	(10,900)
BALANCING VIRTUAL	(11,604)	(14,483)	(9,942)	(12,745)	(13,231)	(12,078)	(19,391)
UFELLOSSES	9,670	9,035	9,296	9,334	9,271	9,342	8,805



SETTLEMENTS REPORT
MARCH 2002 CLOSEOUT SETTLEMENT
DECEMBER 6, 2005

CLOSEOUT SETTLEMENT MARKET WITHDRAWALS ANALYSIS

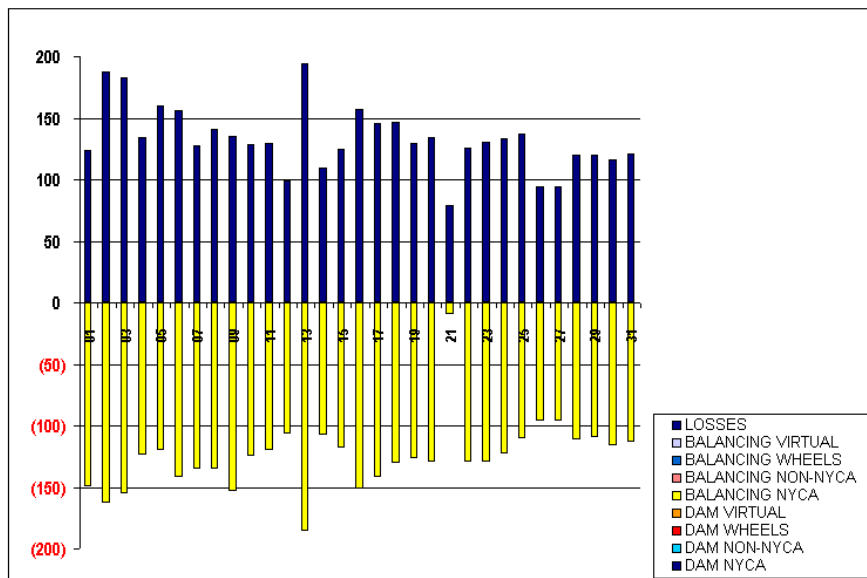
	MONDAY	TUESDAY	WEDNESDAY	THURSDAY	FRIDAY	SATURDAY	SUNDAY
					1	2	4
DAM NYCA					393,697	354,698	407,626
DAM NON-NYCA					10,306	7,291	7,341
DAM WHEELS					15,260	7,200	7,900
DAM VIRTUAL					13,206	8,635	17,017
BALANCING NYCA					18,163	18,625	7,899
BALANCING NON-NYCA					(3,150)	(1,996)	6,404
BALANCING WHEELS					(6,050)	(3,000)	(2,800)
BALANCING VIRTUAL					(13,206)	(8,635)	(17,017)
UFELOSSES					16,251	12,966	12,865
	3	5	6	7	8	9	11
DAM NYCA	342,693	413,967	397,898	389,729	382,255	338,909	394,238
DAM NON-NYCA	7,138	11,595	9,444	9,197	7,976	4,989	12,399
DAM WHEELS	8,000	13,960	23,450	17,450	9,300	15,873	21,838
DAM VIRTUAL	13,661	14,660	14,794	8,754	9,189	8,001	7,410
BALANCING NYCA	12,812	14,167	12,546	13,101	10,111	11,325	19,771
BALANCING NON-NYCA	(1,245)	6,387	(621)	(1,270)	115	3,130	(3,747)
BALANCING WHEELS	(3,200)	(9,776)	(5,500)	(7,600)	(7,700)	(10,873)	(7,193)
BALANCING VIRTUAL	(13,651)	(14,660)	(14,794)	(8,754)	(9,189)	(8,001)	(7,410)
UFELOSSES	11,396	14,064	13,033	13,586	13,304	11,877	13,748
	10	12	13	14	15	16	18
DAM NYCA	340,346	397,528	395,636	388,974	381,012	344,006	393,229
DAM NON-NYCA	5,525	11,716	8,821	9,846	12,493	5,038	8,570
DAM WHEELS	13,000	22,969	7,778	2,900	3,500	8,135	11,800
DAM VIRTUAL	6,954	7,853	12,116	11,913	20,667	10,279	18,727
BALANCING NYCA	17,423	11,846	12,457	4,663	9,235	16,659	22,324
BALANCING NON-NYCA	847	(5,286)	1,617	(1,750)	(5,389)	1,078	(292)
BALANCING WHEELS	(7,800)	(6,754)	(2,800)	(1,150)	(3,310)	(3,335)	(6,399)
BALANCING VIRTUAL	(6,954)	(7,853)	(12,116)	(11,913)	(20,667)	(10,279)	(18,727)
UFELOSSES	11,860	12,438	12,747	11,714	11,451	8,624	10,524
	17	19	20	21	22	23	25
DAM NYCA	341,851	394,840	394,359	397,482	414,455	368,444	399,566
DAM NON-NYCA	4,738	8,111	8,043	7,995	10,589	5,248	9,161
DAM WHEELS	12,203	13,997	11,841	9,528	18,639	20,742	13,865
DAM VIRTUAL	9,795	20,649	16,101	18,228	15,087	13,899	11,604
BALANCING NYCA	18,075	12,133	21,955	10,151	9,293	13,152	9,025
BALANCING NON-NYCA	1,524	300	2,604	214	(3,880)	2,538	(1,197)
BALANCING WHEELS	(7,291)	(10,259)	(6,848)	(3,200)	(12,189)	(12,297)	(7,817)
BALANCING VIRTUAL	(9,795)	(20,649)	(16,101)	(18,228)	(15,087)	(13,899)	(11,604)
UFELOSSES	9,104	10,304	10,836	9,573	9,335	9,351	9,807
	24	26	27	28	29	30	31
DAM NYCA	350,395	396,346	394,354	391,521	374,469	337,225	322,450
DAM NON-NYCA	4,618	8,615	8,044	9,294	8,110	5,238	5,189
DAM WHEELS	15,991	12,859	18,377	18,686	15,742	15,196	15,790
DAM VIRTUAL	7,738	14,483	9,942	12,745	13,231	12,078	19,391
BALANCING NYCA	6,464	25,002	10,221	1,708	(6,127)	6,582	1,328
BALANCING NON-NYCA	2,526	(1,650)	(2,200)	(3,372)	(2,600)	265	276
BALANCING WHEELS	(11,341)	(8,024)	(12,529)	(12,287)	(13,098)	(9,296)	(10,900)
BALANCING VIRTUAL	(7,738)	(14,483)	(9,942)	(12,745)	(13,231)	(12,078)	(19,391)
UFELOSSES	8,888	9,130	9,391	9,454	9,391	9,459	8,926



SETTLEMENTS REPORT
MARCH 2002 CLOSEOUT SETTLEMENT
DECEMBER 6, 2005

CLOSEOUT SETTLEMENT MARKET WITHDRAWALS DELTA ANALYSIS

	MONDAY	TUESDAY	WEDNESDAY	THURSDAY	FRIDAY	SATURDAY	SUNDAY
					1	2	3
DAM NYCA					0	0	0
DAM NON-NYCA					0	0	0
DAM WHEELS					0	0	0
DAM VIRTUAL					0	0	0
BALANCING NYCA					(149)	(163)	(155)
BALANCING NON-NYCA					0	0	0
BALANCING WHEELS					0	0	0
BALANCING VIRTUAL					0	0	0
UFELOSSES					124	188	183
	4	5	6	7	8	9	10
DAM NYCA	0	0	0	0	0	0	0
DAM NON-NYCA	0	0	0	0	0	0	0
DAM WHEELS	0	0	0	0	0	0	0
DAM VIRTUAL	0	0	0	0	0	0	0
BALANCING NYCA	(124)	(120)	(142)	(136)	(136)	(154)	(125)
BALANCING NON-NYCA	0	0	0	0	0	0	0
BALANCING WHEELS	0	0	0	0	0	0	0
BALANCING VIRTUAL	0	0	0	0	0	0	0
UFELOSSES	134	160	166	127	141	135	129
	11	12	13	14	15	16	17
DAM NYCA	0	0	0	0	0	0	0
DAM NON-NYCA	0	0	0	0	0	0	0
DAM WHEELS	0	0	0	0	0	0	0
DAM VIRTUAL	0	0	0	0	0	0	0
BALANCING NYCA	(120)	(107)	(186)	(107)	(118)	(152)	(142)
BALANCING NON-NYCA	0	0	0	0	0	0	0
BALANCING WHEELS	0	0	0	0	0	0	0
BALANCING VIRTUAL	0	0	0	0	0	0	0
UFELOSSES	130	99	194	109	125	157	145
	18	19	20	21	22	23	24
DAM NYCA	0	0	0	0	0	0	0
DAM NON-NYCA	0	0	0	0	0	0	0
DAM WHEELS	0	0	0	0	0	0	0
DAM VIRTUAL	0	0	0	0	0	0	0
BALANCING NYCA	(131)	(127)	(130)	(9)	(129)	(129)	(123)
BALANCING NON-NYCA	0	0	0	0	0	0	0
BALANCING WHEELS	0	0	0	0	0	0	0
BALANCING VIRTUAL	0	0	0	0	0	0	0
UFELOSSES	146	130	134	79	125	130	133
	25	26	27	28	29	30	31
DAM NYCA	0	0	0	0	0	0	0
DAM NON-NYCA	0	0	0	0	0	0	0
DAM WHEELS	0	0	0	0	0	0	0
DAM VIRTUAL	0	0	0	0	0	0	0
BALANCING NYCA	(111)	(96)	(96)	(112)	(109)	(116)	(113)
BALANCING NON-NYCA	0	0	0	0	0	0	0
BALANCING WHEELS	0	0	0	0	0	0	0
BALANCING VIRTUAL	0	0	0	0	0	0	0
UFELOSSES	137	94	94	120	120	116	121

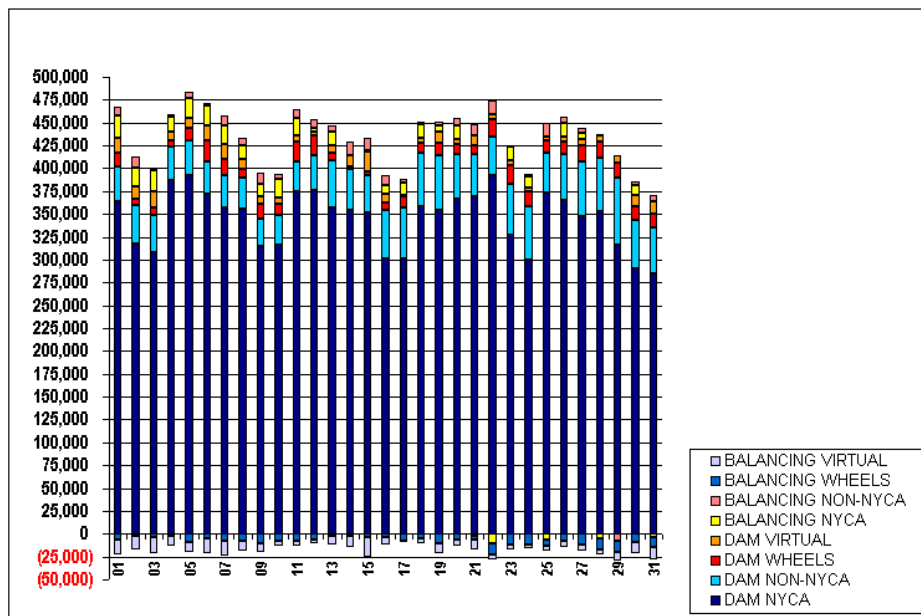


FOR DISCUSSION PURPOSES ONLY

SETTLEMENTS REPORT
MARCH 2002 CLOSEOUT SETTLEMENT
DECEMBER 6, 2005

24-MONTH SETTLEMENT ADJUSTMENT MARKET SUPPLY ANALYSIS

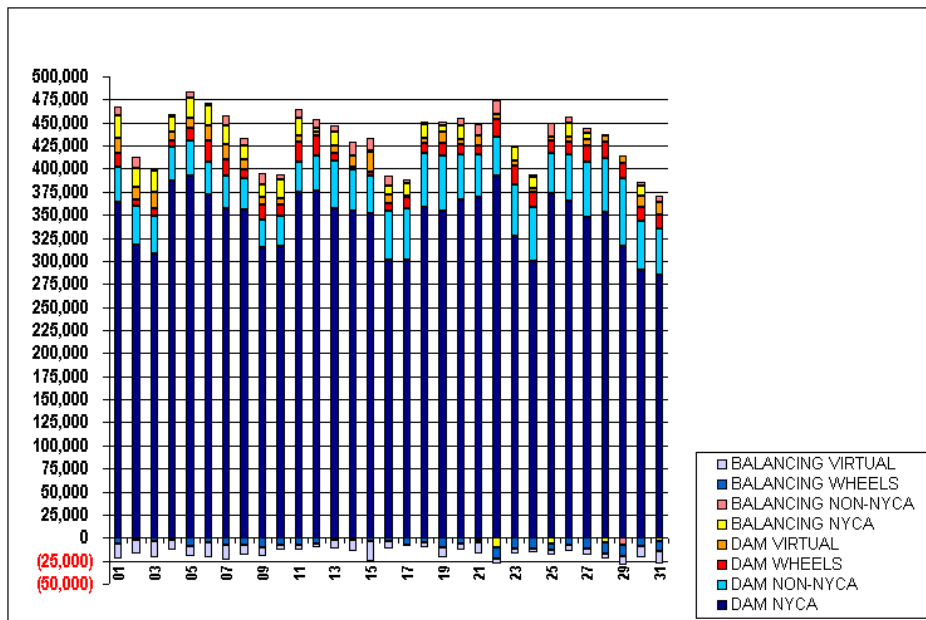
	MONDAY	TUESDAY	WEDNESDAY	THURSDAY	FRIDAY	SATURDAY	SUNDAY
					1	2	3
DAM NYCA					364,530	317,014	308,067
DAM NON-NYCA					37,035	42,329	40,532
DAM WHEELS					15,260	7,200	8,000
DAM VIRTUAL					16,920	13,793	18,055
BALANCING NYCA					24,020	19,945	22,784
BALANCING NON-NYCA					9,608	12,211	1,334
BALANCING WHEELS					(6,050)	(3,000)	(3,200)
BALANCING VIRTUAL					(16,920)	(13,793)	(18,055)
	4	5	6	7	8	9	10
DAM NYCA	387,524	392,697	372,582	357,514	356,075	315,530	315,833
DAM NON-NYCA	35,741	37,751	34,684	35,129	33,833	29,538	32,954
DAM WHEELS	7,000	13,950	23,450	17,450	9,300	15,873	13,000
DAM VIRTUAL	10,030	10,030	16,374	16,376	10,552	8,592	5,480
BALANCING NYCA	15,863	22,928	21,866	19,887	15,116	13,669	20,478
BALANCING NON-NYCA	3,497	6,664	2,953	11,746	8,732	11,511	6,723
BALANCING WHEELS	(2,800)	(9,776)	(5,500)	(7,600)	(7,700)	(10,873)	(7,200)
BALANCING VIRTUAL	(10,030)	(10,030)	(16,374)	(16,376)	(10,552)	(8,592)	(5,480)
	11	12	13	14	15	16	17
DAM NYCA	374,548	376,565	357,049	354,284	351,611	301,514	301,909
DAM NON-NYCA	33,493	37,155	51,687	45,063	41,316	53,127	55,187
DAM WHEELS	21,838	22,959	7,778	2,900	3,500	8,135	12,203
DAM VIRTUAL	6,718	3,312	8,517	11,619	21,724	8,673	1,550
BALANCING NYCA	18,620	3,625	15,176	(1,369)	1,157	10,208	13,305
BALANCING NON-NYCA	9,037	10,153	7,358	15,318	13,911	10,351	4,634
BALANCING WHEELS	(7,193)	(6,754)	(2,800)	(1,150)	(3,310)	(3,335)	(7,291)
BALANCING VIRTUAL	(6,718)	(3,312)	(8,517)	(11,619)	(21,724)	(8,673)	(1,550)
	18	19	20	21	22	23	24
DAM NYCA	358,392	353,841	366,439	368,662	392,583	327,431	300,228
DAM NON-NYCA	58,237	60,482	48,553	46,928	42,321	55,223	58,317
DAM WHEELS	11,500	13,997	11,841	9,528	18,639	20,742	15,991
DAM VIRTUAL	5,639	11,512	5,750	11,400	5,350	5,300	4,900
BALANCING NYCA	14,267	7,593	14,038	(2,612)	(10,949)	14,800	11,490
BALANCING NON-NYCA	3,444	3,669	8,564	11,818	15,741	1,127	2,347
BALANCING WHEELS	(5,399)	(10,259)	(6,848)	(3,200)	(12,189)	(12,297)	(11,341)
BALANCING VIRTUAL	(5,639)	(11,512)	(5,750)	(11,400)	(5,350)	(5,300)	(4,900)
	25	26	27	28	29	30	31
DAM NYCA	373,638	364,960	347,778	353,019	316,496	290,874	284,785
DAM NON-NYCA	43,397	50,894	59,124	58,151	73,195	52,284	50,096
DAM WHEELS	13,865	12,859	18,377	18,685	15,742	15,196	15,790
DAM VIRTUAL	4,260	6,260	6,595	5,714	8,347	12,122	13,156
BALANCING NYCA	(6,039)	14,149	6,250	(4,805)	590	10,501	(4,077)
BALANCING NON-NYCA	14,979	7,441	6,210	1,482	(7,498)	4,510	7,188
BALANCING WHEELS	(7,817)	(8,024)	(12,529)	(12,287)	(13,098)	(9,296)	(10,900)
BALANCING VIRTUAL	(4,260)	(6,260)	(6,595)	(5,714)	(8,347)	(12,122)	(13,156)



SETTLEMENTS REPORT
MARCH 2002 CLOSEOUT SETTLEMENT
DECEMBER 6, 2005

CLOSEOUT SETTLEMENT MARKET SUPPLY ANALYSIS

	MONDAY	TUESDAY	WEDNESDAY	THURSDAY	FRIDAY	SATURDAY	SUNDAY
					1	2	3
DAM NYCA					364,530	317,014	308,067
DAM NON-NYCA					37,035	42,329	40,532
DAM WHEELS					15,260	7,200	8,000
DAM VIRTUAL					16,920	13,793	13,055
BALANCING NYCA					23,994	19,970	22,811
BALANCING NON-NYCA					9,608	12,211	1,334
BALANCING WHEELS					(6,050)	(3,000)	(3,200)
BALANCING VIRTUAL					(16,920)	(13,793)	(13,055)
	4	5	6	7	8	9	10
DAM NYCA	387,524	392,697	372,582	357,514	356,075	315,530	315,833
DAM NON-NYCA	35,741	37,751	34,684	35,129	33,833	29,538	32,954
DAM WHEELS	7,000	13,950	23,450	17,450	9,300	15,873	13,000
DAM VIRTUAL	10,030	10,030	16,374	16,376	10,652	3,592	5,480
BALANCING NYCA	15,873	22,968	21,880	19,878	15,121	13,650	20,481
BALANCING NON-NYCA	3,497	6,664	2,953	11,746	8,732	11,511	6,723
BALANCING WHEELS	(2,800)	(9,776)	(5,500)	(7,600)	(7,700)	(10,873)	(7,800)
BALANCING VIRTUAL	(10,030)	(10,030)	(16,374)	(16,376)	(10,552)	(8,592)	(5,480)
	11	12	13	14	15	16	17
DAM NYCA	374,548	376,665	357,049	354,284	351,611	301,514	301,909
DAM NON-NYCA	33,493	37,155	51,687	45,063	41,316	53,127	55,187
DAM WHEELS	21,838	22,959	7,778	2,900	3,500	8,135	12,203
DAM VIRTUAL	6,718	3,312	8,517	11,619	21,724	3,673	1,550
BALANCING NYCA	18,629	3,618	15,184	(1,367)	1,164	10,213	13,308
BALANCING NON-NYCA	9,037	10,153	7,358	15,318	13,911	10,351	4,634
BALANCING WHEELS	(7,193)	(6,754)	(2,800)	(1,150)	(3,310)	(3,335)	(7,291)
BALANCING VIRTUAL	(6,718)	(3,312)	(8,517)	(11,619)	(21,724)	(8,673)	(1,550)
	18	19	20	21	22	23	24
DAM NYCA	358,392	353,841	366,439	368,662	392,583	327,431	300,228
DAM NON-NYCA	58,237	60,482	48,553	46,928	42,321	55,223	58,317
DAM WHEELS	11,500	13,997	11,841	9,528	18,639	20,742	15,991
DAM VIRTUAL	5,639	11,512	5,750	11,400	5,350	5,300	4,900
BALANCING NYCA	14,283	7,596	14,042	(2,542)	(10,953)	14,801	11,500
BALANCING NON-NYCA	3,444	3,669	8,564	11,818	15,741	1,127	2,347
BALANCING WHEELS	(5,399)	(10,259)	(6,848)	(3,200)	(12,189)	(12,297)	(11,341)
BALANCING VIRTUAL	(5,639)	(11,512)	(5,750)	(11,400)	(5,350)	(5,300)	(4,900)
	25	26	27	28	29	30	31
DAM NYCA	373,638	364,960	347,778	353,019	316,496	290,874	284,785
DAM NON-NYCA	43,397	50,894	59,124	58,151	73,195	52,284	50,096
DAM WHEELS	13,865	12,859	13,377	18,685	15,742	15,196	15,790
DAM VIRTUAL	4,260	6,260	6,595	5,714	8,347	12,122	13,156
BALANCING NYCA	(6,012)	14,147	6,248	(4,797)	601	10,501	(4,069)
BALANCING NON-NYCA	14,979	7,441	6,210	1,482	(7,498)	4,510	7,188
BALANCING WHEELS	(7,817)	(8,024)	(12,529)	(12,287)	(13,098)	(9,296)	(10,900)
BALANCING VIRTUAL	(4,260)	(6,260)	(6,595)	(5,714)	(8,347)	(12,122)	(13,156)



SETTLEMENTS REPORT
MARCH 2002 CLOSEOUT SETTLEMENT
DECEMBER 6, 2005

CLOSEOUT SETTLEMENT MARKET SUPPLY DELTA ANALYSIS

	MONDAY	TUESDAY	WEDNESDAY	THURSDAY	FRIDAY	SATURDAY	SUNDAY
					1	2	3
DAM NYCA					0	0	0
DAM NON-NYCA					0	0	0
DAM WHEELS					0	0	0
DAM VIRTUAL					0	0	0
BALANCING NYCA					(26)	25	28
BALANCING NON-NYCA					0	0	0
BALANCING WHEELS					0	0	0
BALANCING VIRTUAL					0	0	0
	4	5	6	7	8	9	10
DAM NYCA	0	0	0	0	0	0	0
DAM NON-NYCA	0	0	0	0	0	0	0
DAM WHEELS	0	0	0	0	0	0	0
DAM VIRTUAL	0	0	0	0	0	0	0
BALANCING NYCA	10	40	14	(8)	5	(19)	4
BALANCING NON-NYCA	0	0	0	0	0	0	0
BALANCING WHEELS	0	0	0	0	0	0	0
BALANCING VIRTUAL	0	0	0	0	0	0	0
	11	12	13	14	15	16	17
DAM NYCA	0	0	0	0	0	0	0
DAM NON-NYCA	0	0	0	0	0	0	0
DAM WHEELS	0	0	0	0	0	0	0
DAM VIRTUAL	0	0	0	0	0	0	0
BALANCING NYCA	9	(7)	8	2	7	5	4
BALANCING NON-NYCA	0	0	0	0	0	0	0
BALANCING WHEELS	0	0	0	0	0	0	0
BALANCING VIRTUAL	0	0	0	0	0	0	0
	18	19	20	21	22	23	24
DAM NYCA	0	0	0	0	0	0	0
DAM NON-NYCA	0	0	0	0	0	0	0
DAM WHEELS	0	0	0	0	0	0	0
DAM VIRTUAL	0	0	0	0	0	0	0
BALANCING NYCA	16	3	4	70	(4)	1	11
BALANCING NON-NYCA	0	0	0	0	0	0	0
BALANCING WHEELS	0	0	0	0	0	0	0
BALANCING VIRTUAL	0	0	0	0	0	0	0
	25	26	27	28	29	30	31
DAM NYCA	0	0	0	0	0	0	0
DAM NON-NYCA	0	0	0	0	0	0	0
DAM WHEELS	0	0	0	0	0	0	0
DAM VIRTUAL	0	0	0	0	0	0	0
BALANCING NYCA	26	(2)	(2)	8	11	0	8
BALANCING NON-NYCA	0	0	0	0	0	0	0
BALANCING WHEELS	0	0	0	0	0	0	0
BALANCING VIRTUAL	0	0	0	0	0	0	0

