



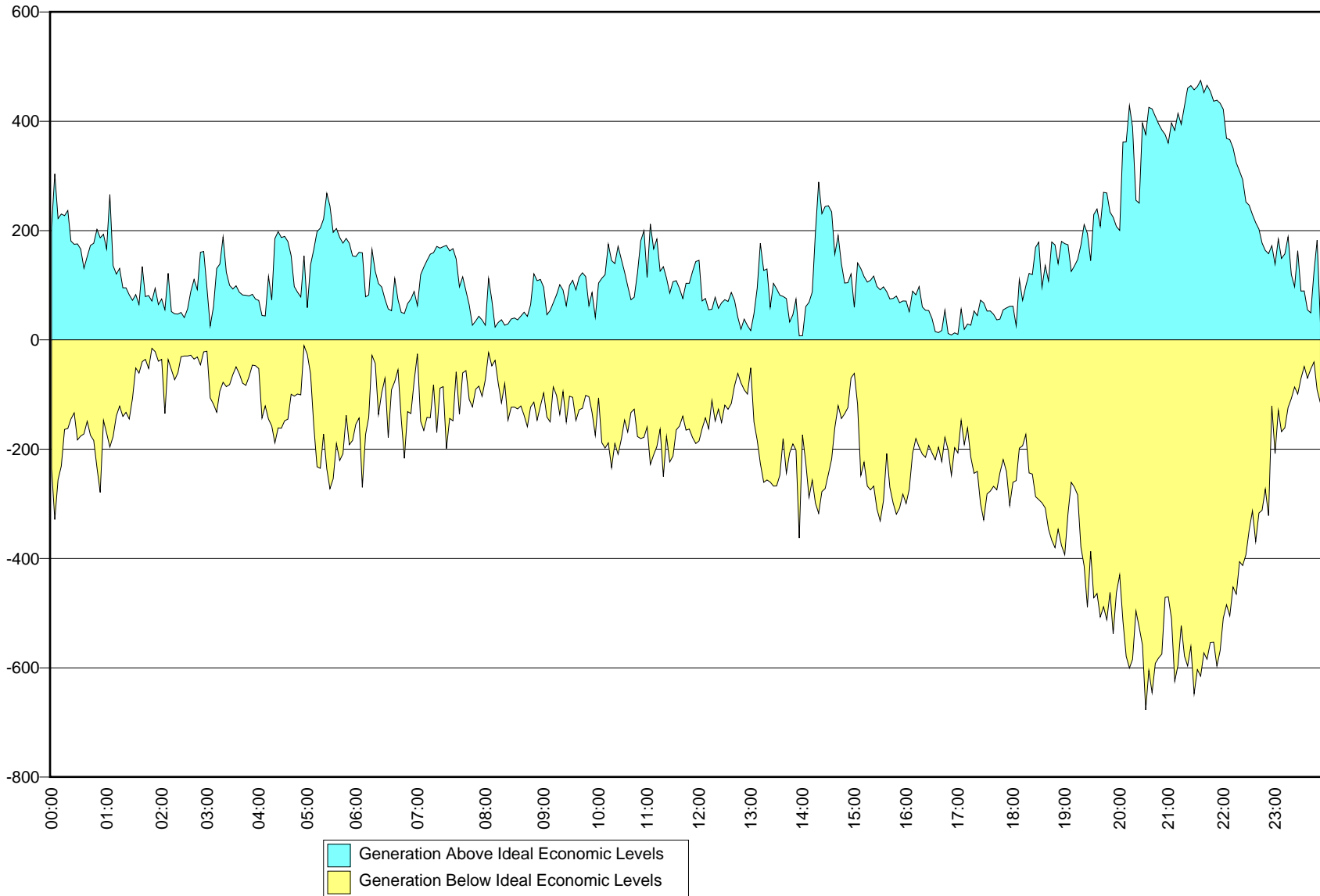
# New York Independent System Operator Decision Support System

DSS-R-B-PS-N-###-A

## Total Over and Under Generation Delta Between the Economic and Physical Basepoints for all On-Dispatch Units

(Contributing factors to differences between the Economic and Physical Basepoints are uneconomic Block Loaded GT generation and poorly performing units that result in the need for SCD to re-dispatch otherwise economic units in an equal and opposite manner to secure the system )

Run for Interval Start Date 07/04/2004

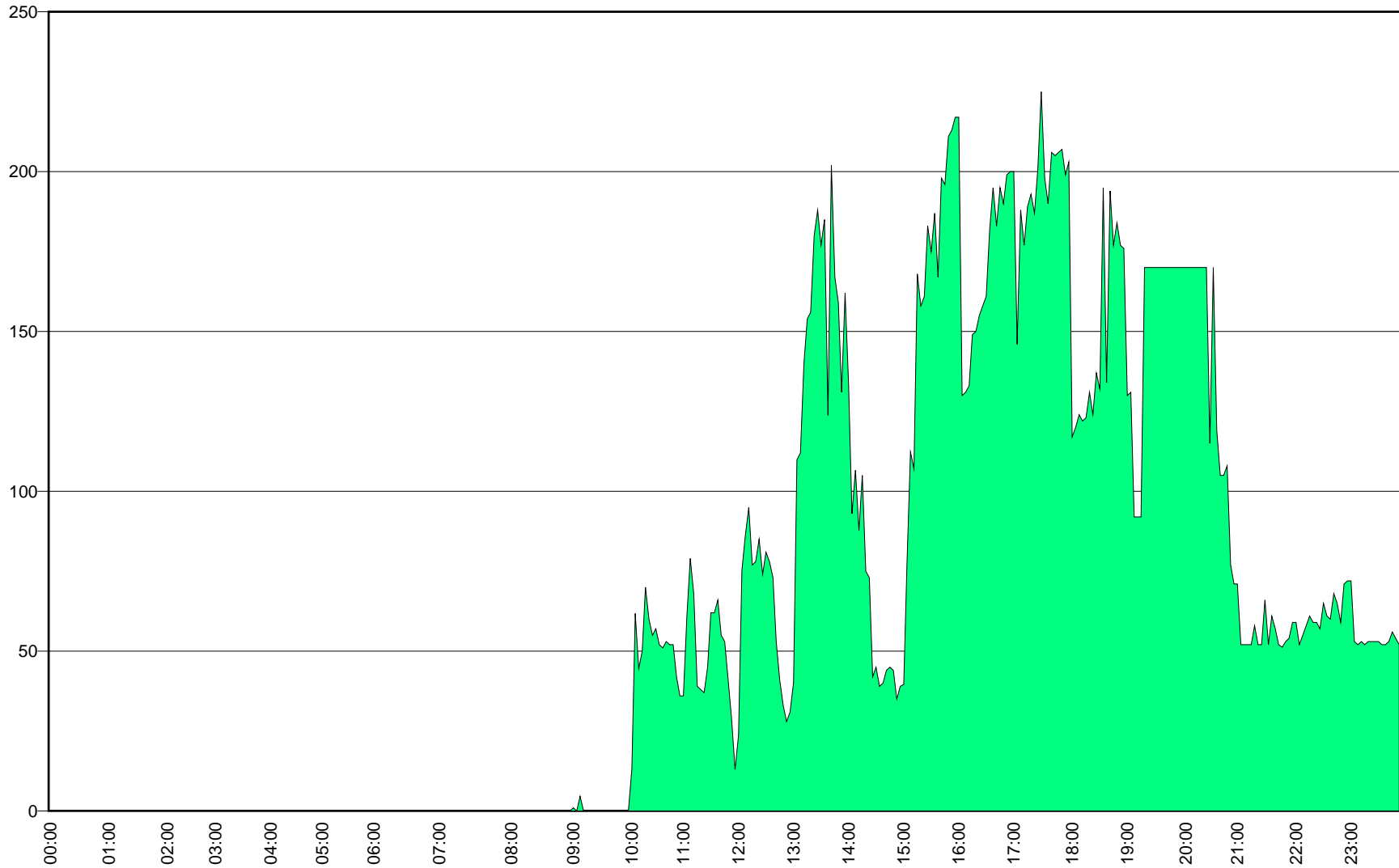


# New York Independent System Operator Decision Support System

## Quantity of Uneconomic Energy from Block Loaded GTs Receiving Basepoints in the Physical Dispatch

(This plot is an indicator of the degree to which block loaded GT generation is contributing to the economic to physical basepoint delta)

Run for Interval Start Date 07/04/2004





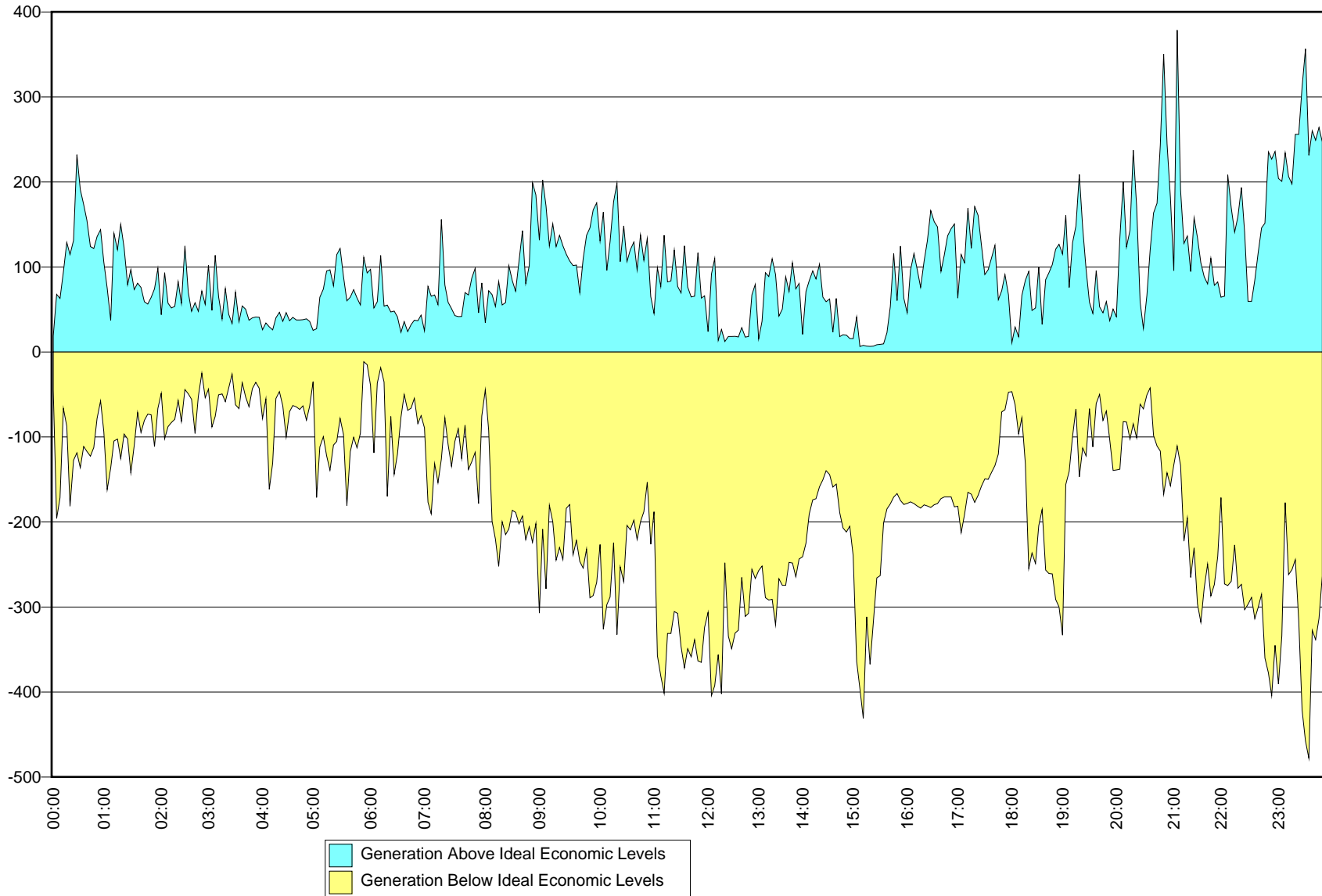
# New York Independent System Operator Decision Support System

DSS-R-B-PS-N-###-A

## Total Over and Under Generation Delta Between the Economic and Physical Basepoints for all On-Dispatch Units

(Contributing factors to differences between the Economic and Physical Basepoints are uneconomic Block Loaded GT generation and poorly performing units that result in the need for SCD to re-dispatch otherwise economic units in an equal and opposite manner to secure the system )

Run for Interval Start Date 07/05/2004

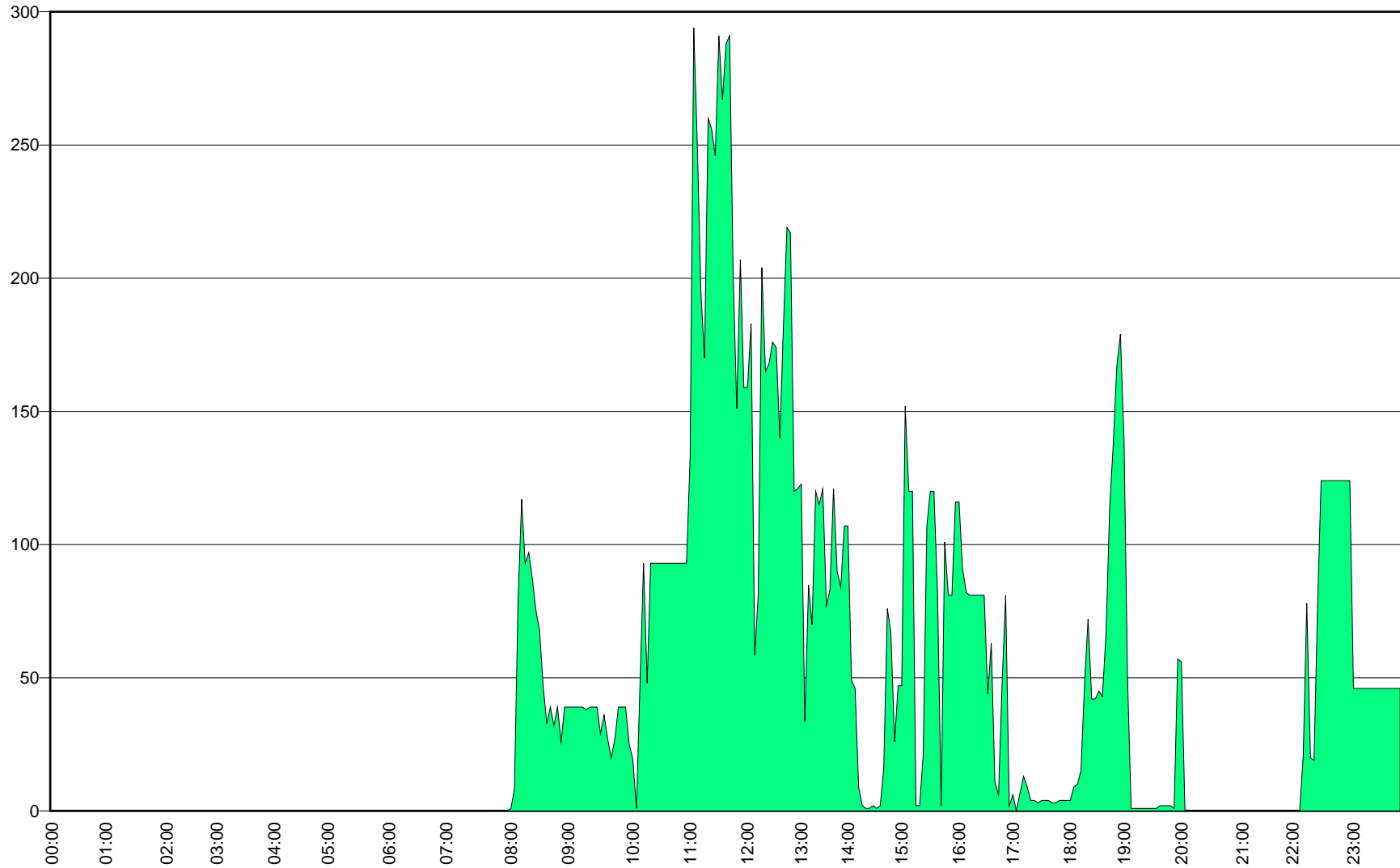


# New York Independent System Operator Decision Support System

## Quantity of Uneconomic Energy from Block Loaded GTs Receiving Basepoints in the Physical Dispatch

(This plot is an indicator of the degree to which block loaded GT generation is contributing to the economic to physical basepoint delta)

Run for Interval Start Date 07/05/2004





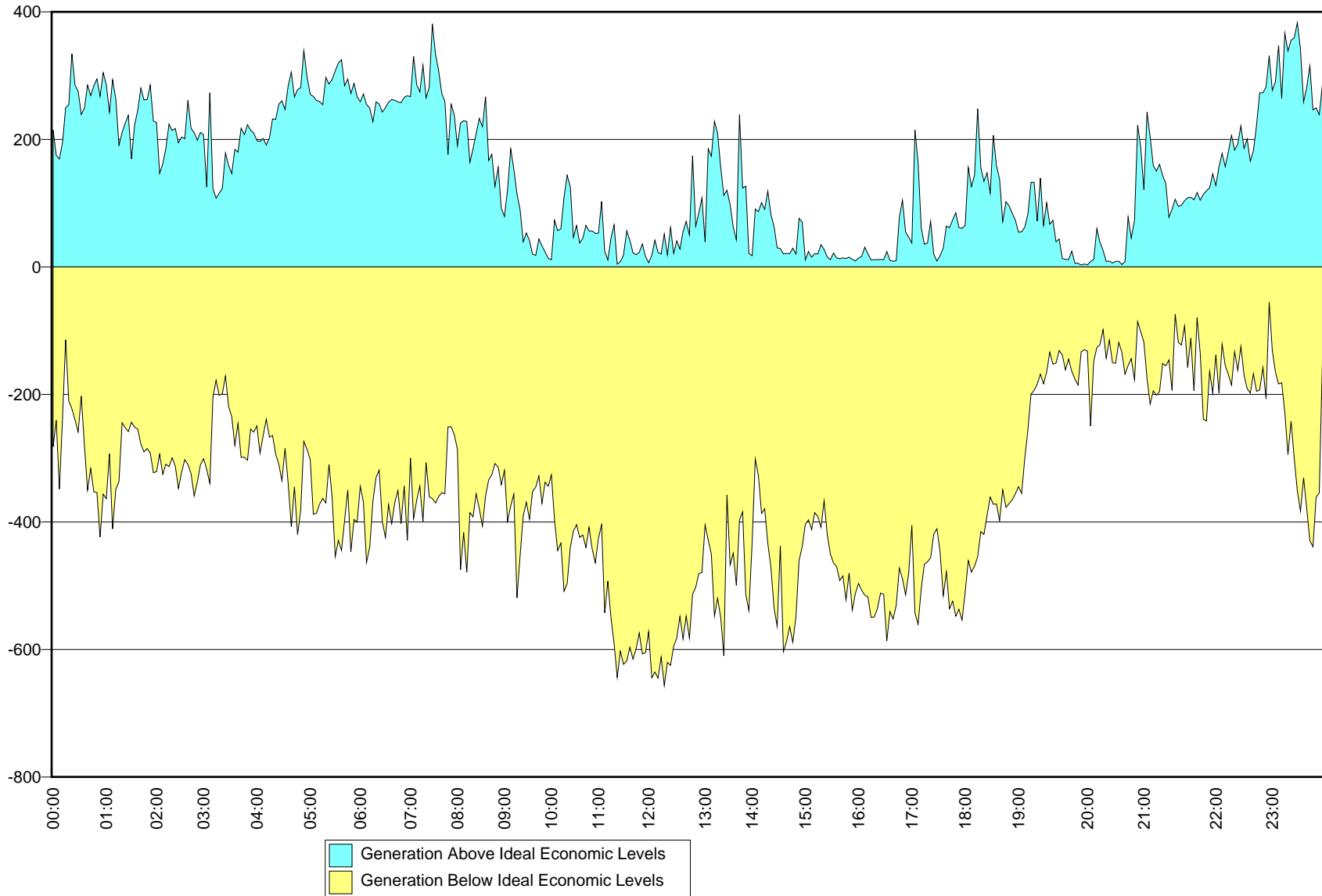
# New York Independent System Operator Decision Support System

DSS-R-B-PS-N-###-A

## Total Over and Under Generation Delta Between the Economic and Physical Basepoints for all On-Dispatch Units

(Contributing factors to differences between the Economic and Physical Basepoints are uneconomic Block Loaded GT generation and poorly performing units that result in the need for SCD to re-dispatch otherwise economic units in an equal and opposite manner to secure the system )

Run for Interval Start Date 07/06/2004

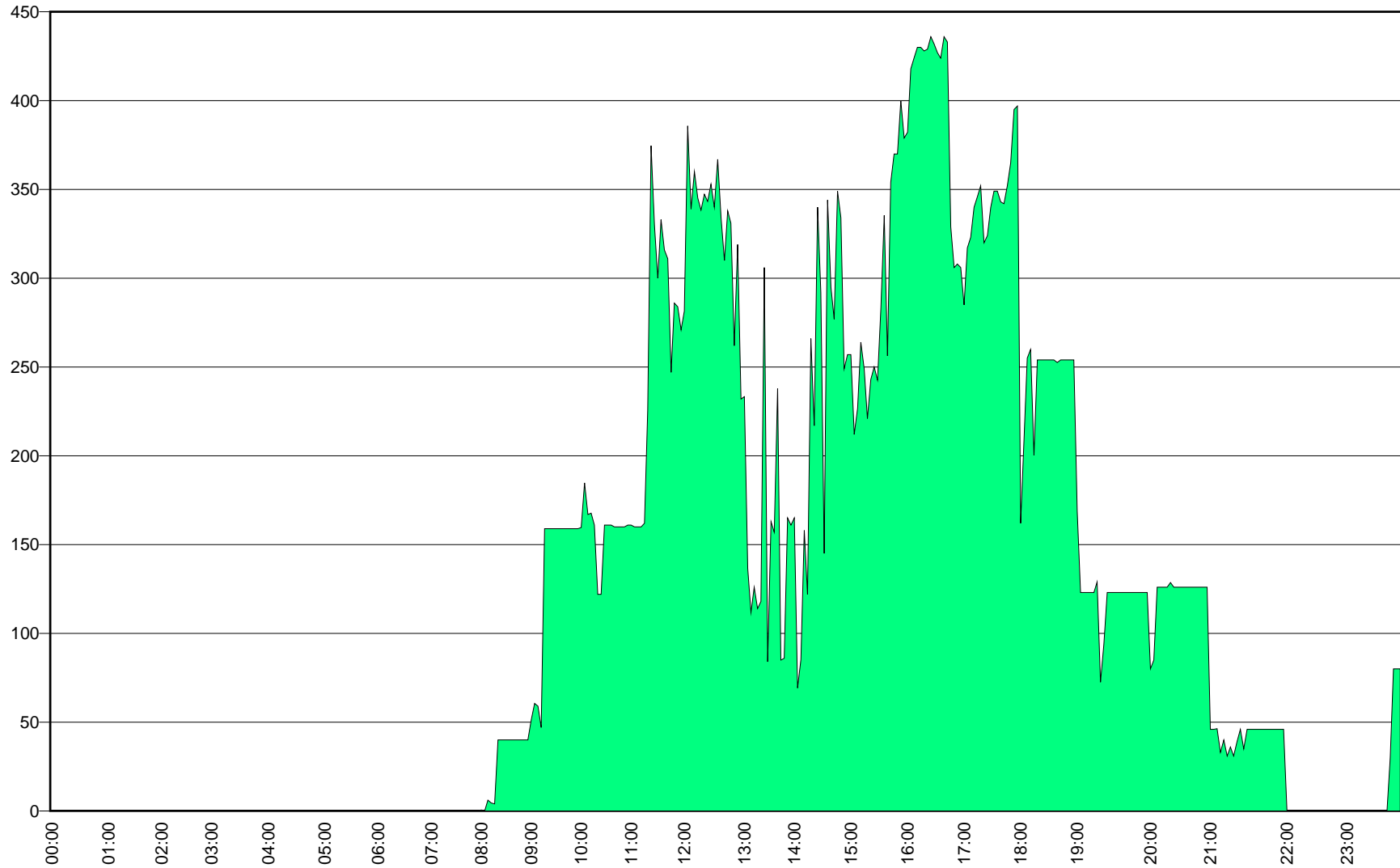


# New York Independent System Operator Decision Support System

## Quantity of Uneconomic Energy from Block Loaded GTs Receiving Basepoints in the Physical Dispatch

(This plot is an indicator of the degree to which block loaded GT generation is contributing to the economic to physical basepoint delta)

Run for Interval Start Date 07/06/2004





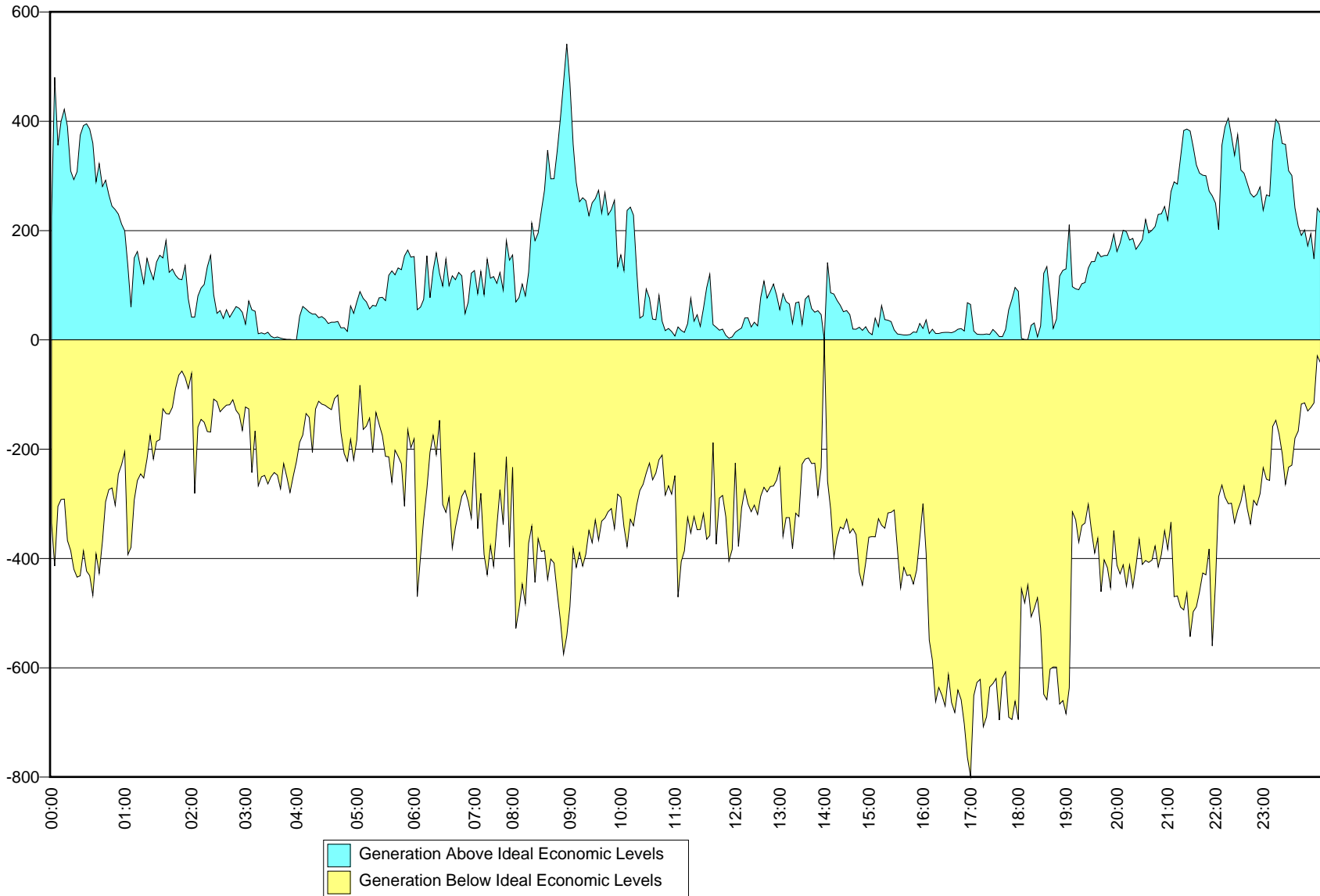
# New York Independent System Operator Decision Support System

DSS-R-B-PS-N-###-A

## Total Over and Under Generation Delta Between the Economic and Physical Basepoints for all On-Dispatch Units

(Contributing factors to differences between the Economic and Physical Basepoints are uneconomic Block Loaded GT generation and poorly performing units that result in the need for SCD to re-dispatch otherwise economic units in an equal and opposite manner to secure the system )

Run for Interval Start Date 07/07/2004

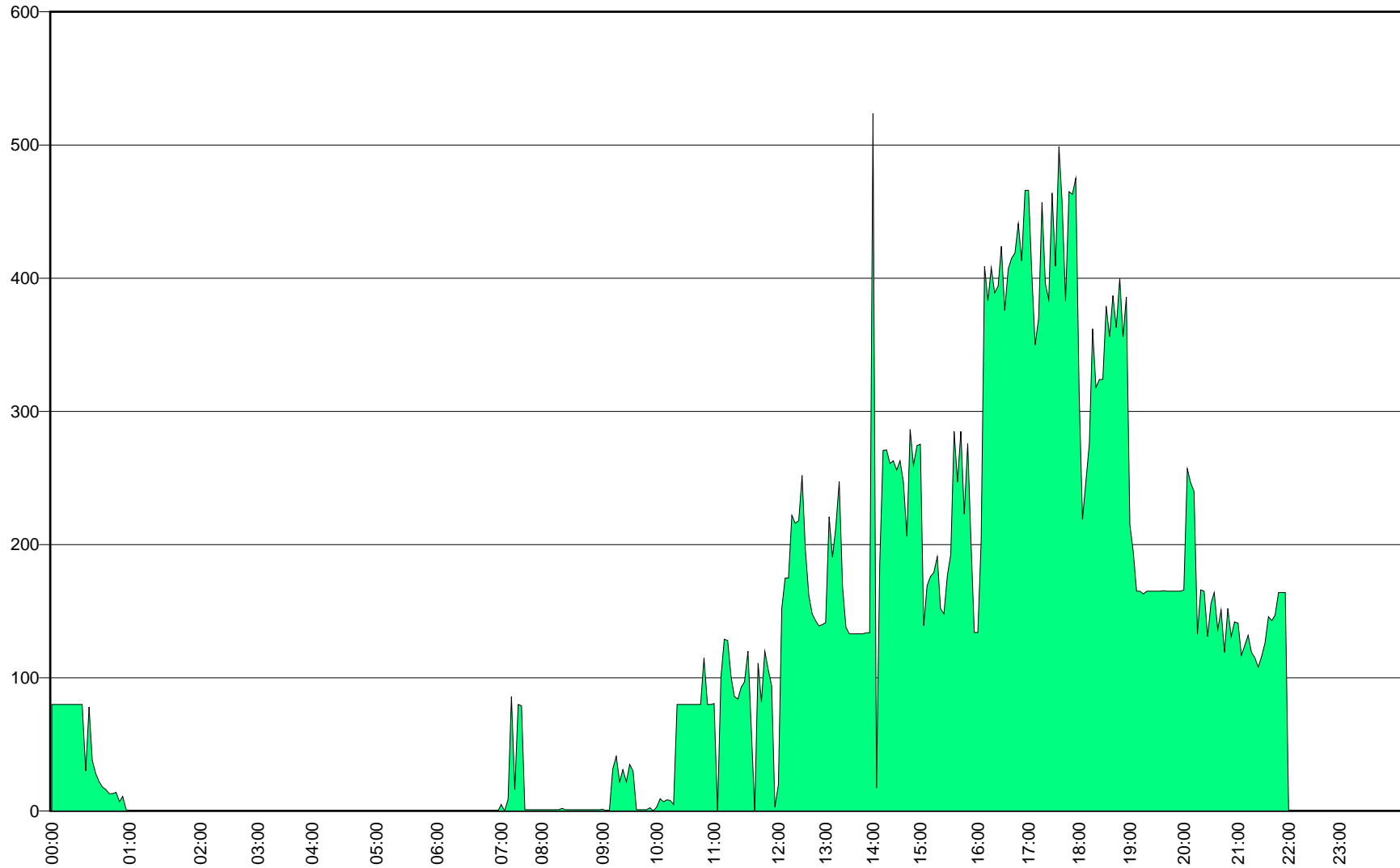


# New York Independent System Operator Decision Support System

## Quantity of Uneconomic Energy from Block Loaded GTs Receiving Basepoints in the Physical Dispatch

(This plot is an indicator of the degree to which block loaded GT generation is contributing to the economic to physical basepoint delta)

Run for Interval Start Date 07/07/2004







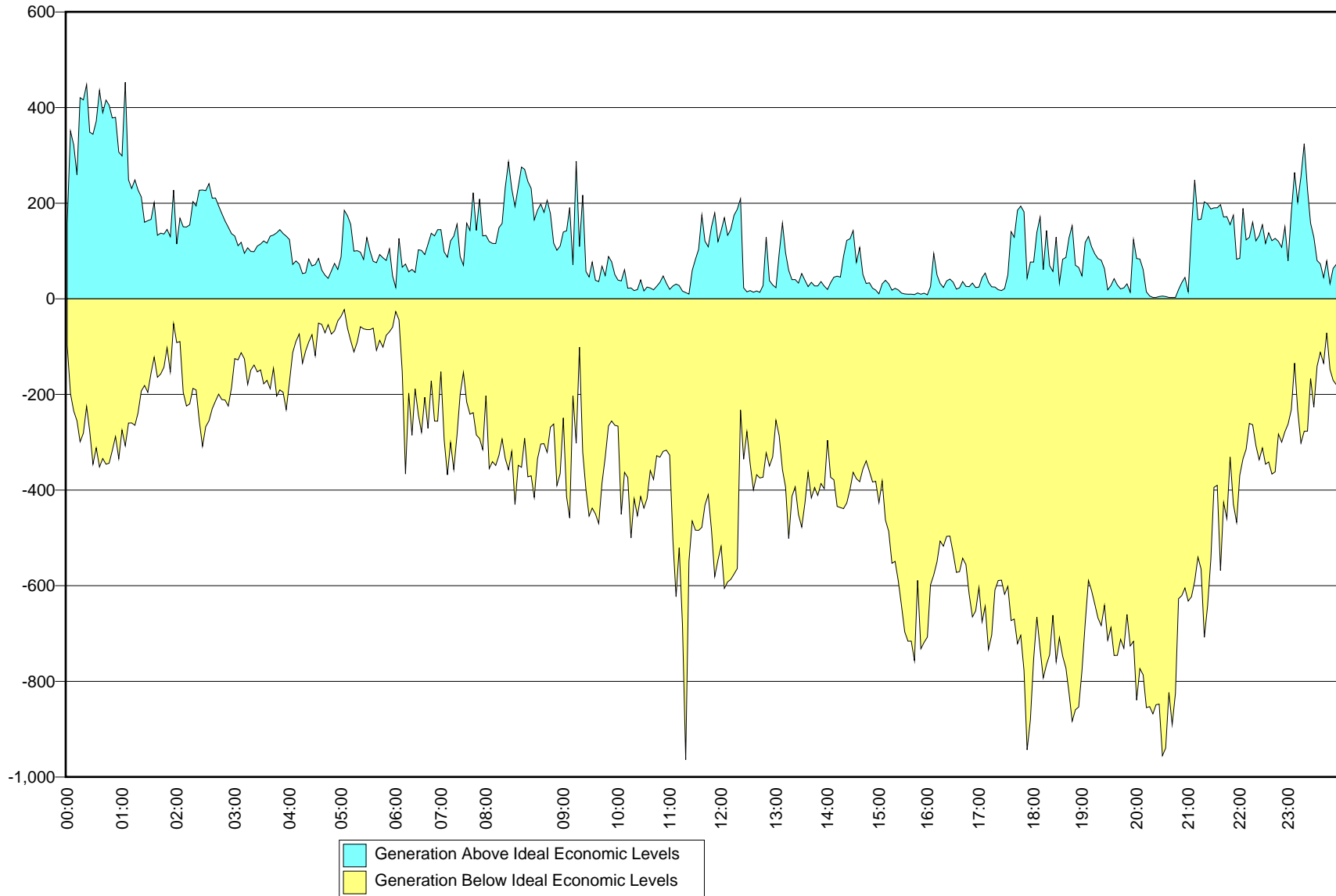
# New York Independent System Operator Decision Support System

DSS-R-B-PS-N-###-A

## Total Over and Under Generation Delta Between the Economic and Physical Basepoints for all On-Dispatch Units

(Contributing factors to differences between the Economic and Physical Basepoints are uneconomic Block Loaded GT generation and poorly performing units that result in the need for SCD to re-dispatch otherwise economic units in an equal and opposite manner to secure the system )

Run for Interval Start Date 07/08/2004

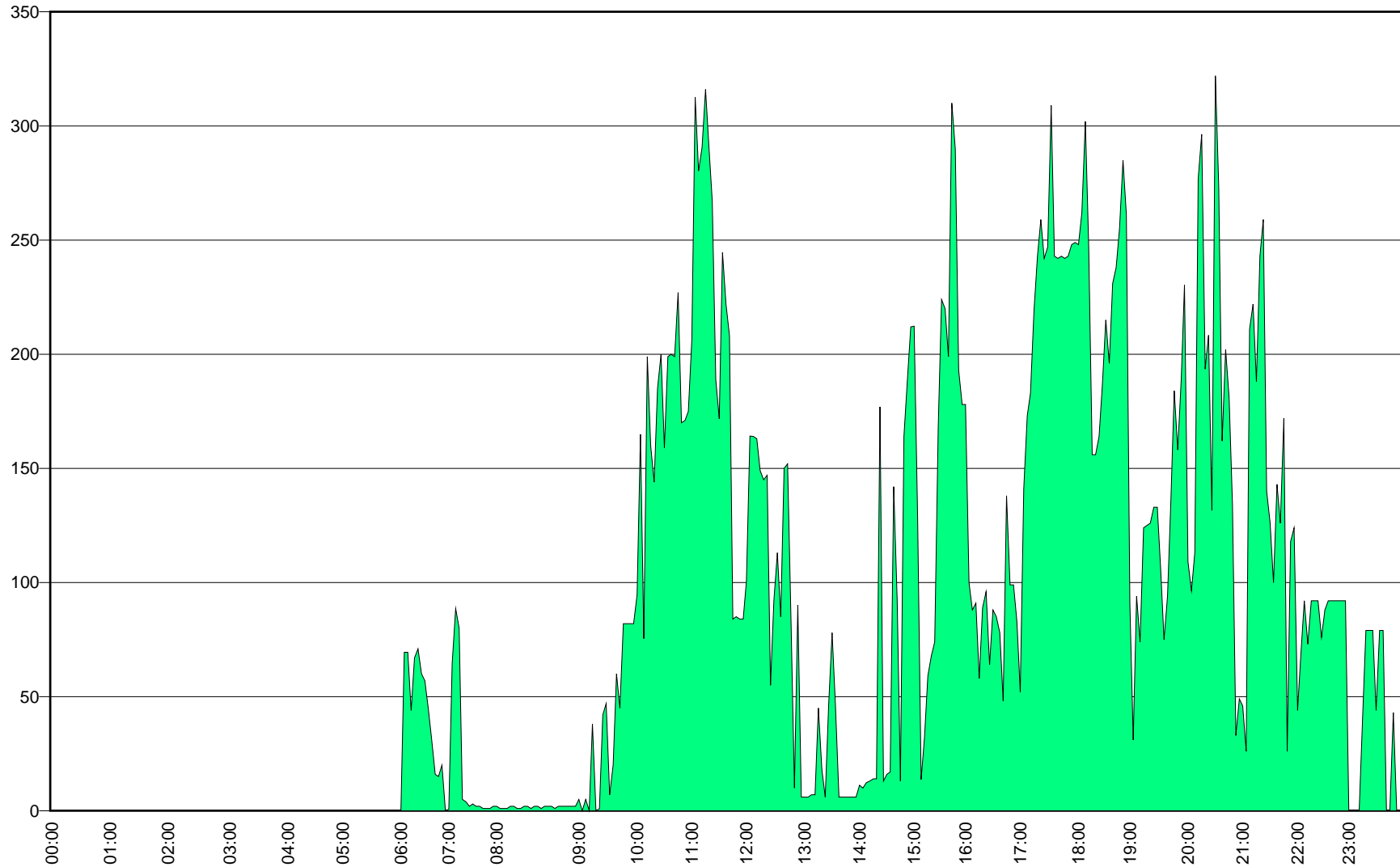


# New York Independent System Operator Decision Support System

## Quantity of Uneconomic Energy from Block Loaded GTs Receiving Basepoints in the Physical Dispatch

(This plot is an indicator of the degree to which block loaded GT generation is contributing to the economic to physical basepoint delta)

Run for Interval Start Date 07/08/2004





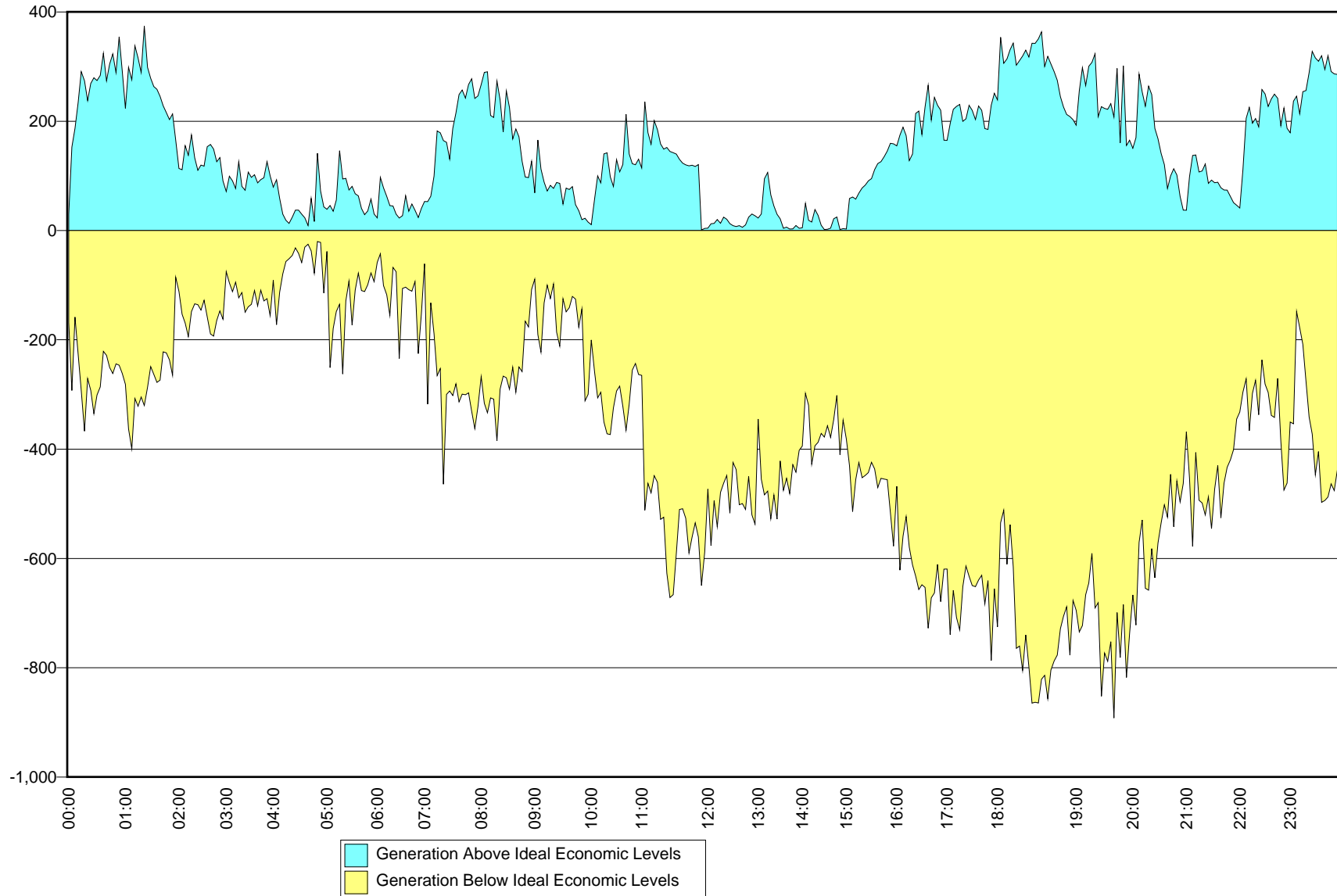
# New York Independent System Operator Decision Support System

DSS-R-B-PS-N-###-A

## Total Over and Under Generation Delta Between the Economic and Physical Basepoints for all On-Dispatch Units

(Contributing factors to differences between the Economic and Physical Basepoints are uneconomic Block Loaded GT generation and poorly performing units that result in the need for SCD to re-dispatch otherwise economic units in an equal and opposite manner to secure the system )

Run for Interval Start Date 07/09/2004

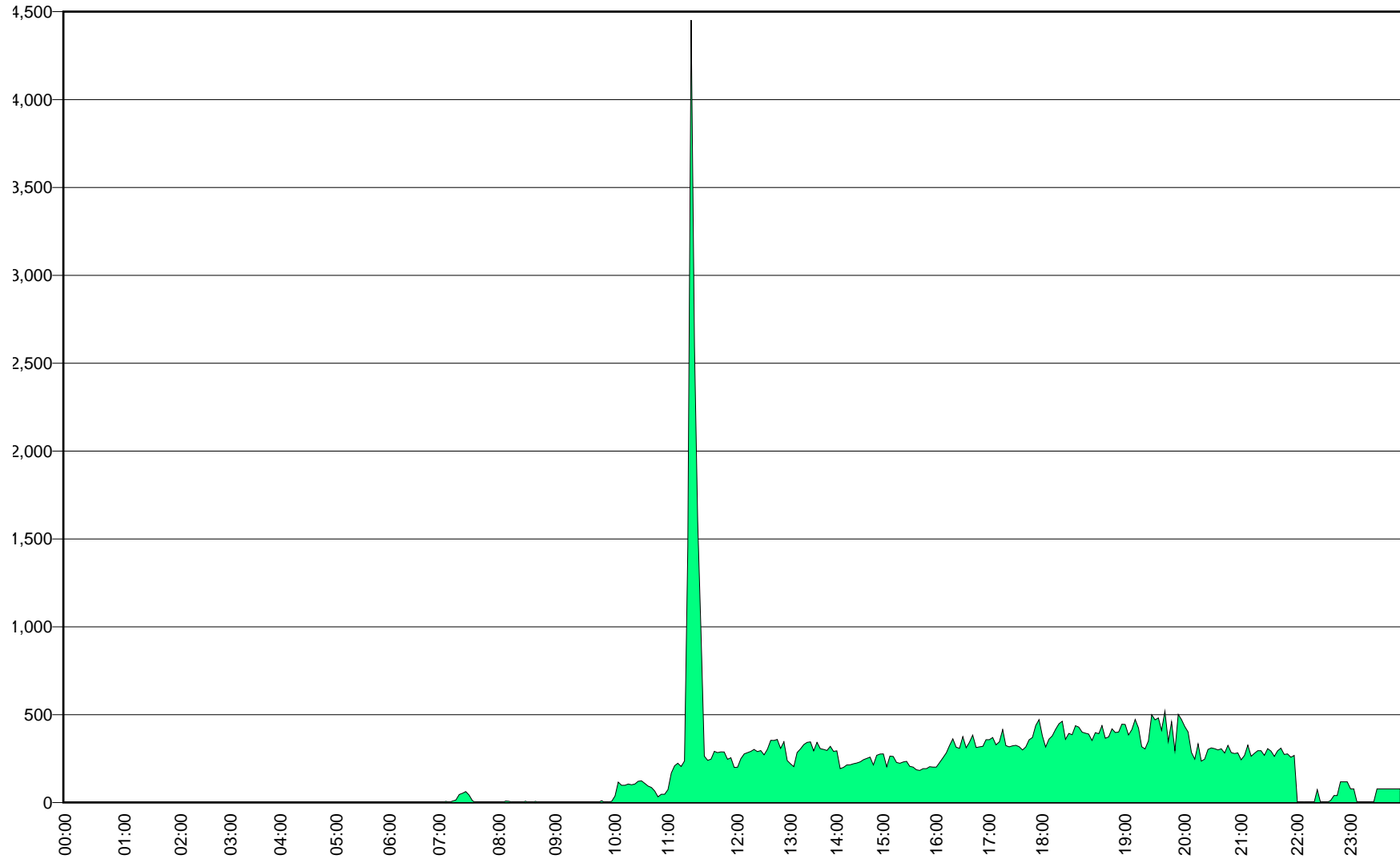


# New York Independent System Operator Decision Support System

## Quantity of Uneconomic Energy from Block Loaded GTs Receiving Basepoints in the Physical Dispatch

(This plot is an indicator of the degree to which block loaded GT generation is contributing to the economic to physical basepoint delta)

Run for Interval Start Date 07/09/2004



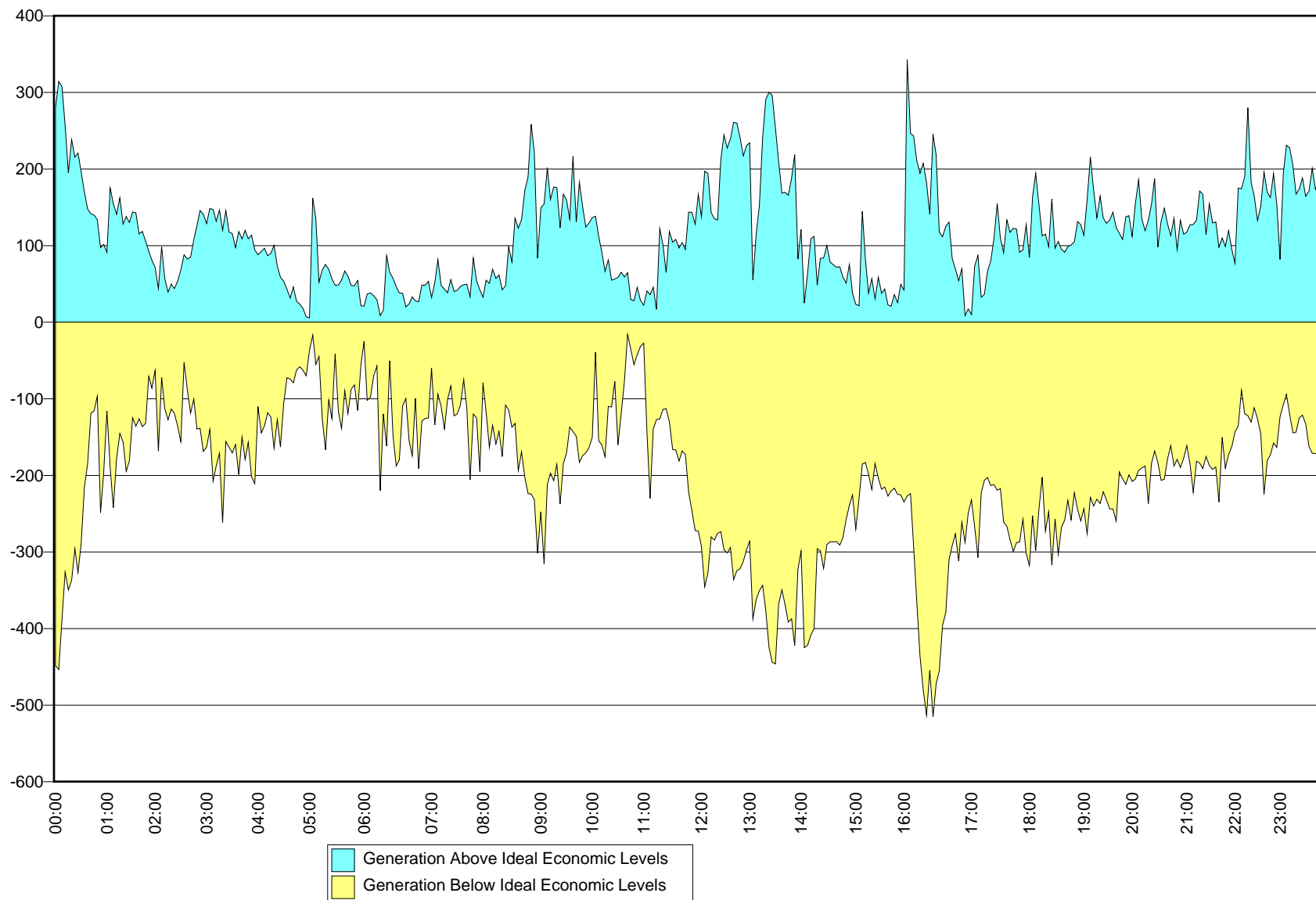
# New York Independent System Operator Decision Support System

DSS-R-B-PS-S-###-A

## Total Over and Under Generation Delta Between the Economic and Physical Basepoints for all On-Dispatch Units

(Contributing factors to differences between the Economic and Physical Basepoints are uneconomic Block Loaded GT generation and poorly performing units that result in the need for SCD to re-dispatch otherwise economic units in an equal and opposite manner to secure the system )

Run for Interval Start Date 07/10/2004



# New York Independent System Operator Decision Support System

DSS-R-B-PS-S-###-B

## Quantity of Uneconomic Energy from Block Loaded GTs Receiving Basepoints in the Physical Dispatch

(This plot is an indicator of the degree to which block loaded GT generation is contributing to the economic to physical basepoint delta)

Run for Interval Start Date 07/10/2004

