

Congestion Impact Preliminary Update

NYISO ESPWG
November 21, 2005

Manos Obessis
Jim Mitsche

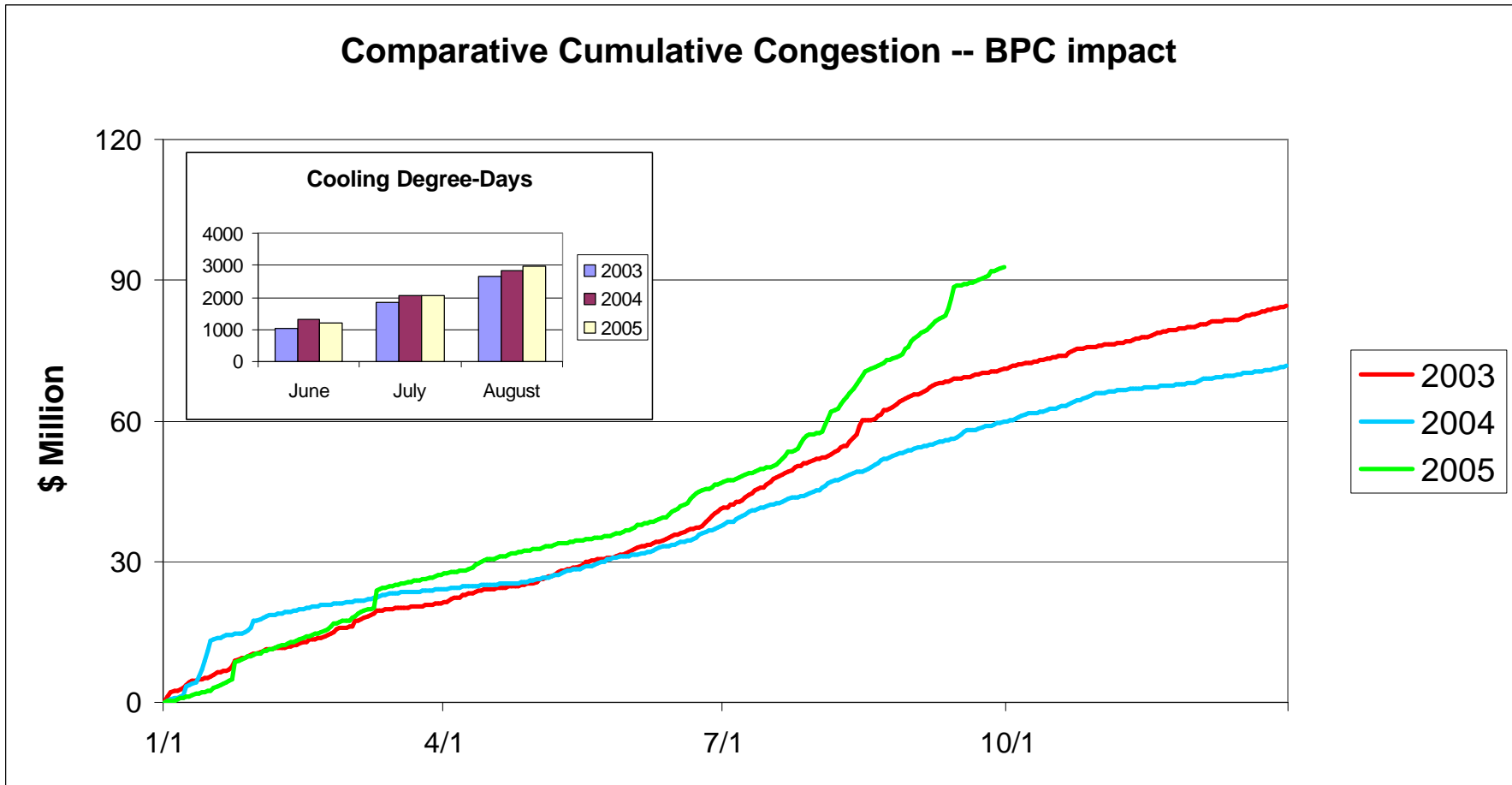


Since last report ...

- Calculated 2005 Q3 Impact Metrics
 - Addressed reporting issues with transition to SMD data formats
 - Worked with NYISO to improve data acquisition
 - Worked with NYISO to update and correct databases
- 2005 Q1_2 results posted on NYISO website
- Preliminary report: still working with NYISO to obtain correct data for few days
 - All numbers preliminary and may fluctuate slightly in final update



Multi-year comparison



Multi-year comparison by numbers (BPC impact – in \$ Million)

	2003	2004	2005
July	10.6	7.5	10.7
August	13.6	8.8	19.5
September	5.7	5.8	16.0
Q3	29.9	22.1	46.2



2005 Q3 Metric summary

Q3 2005 Total Congestion Impact - Mitigated Bids (\$ Millions)

Zone	BPC mitig	Unhedged Cong	Gener pay	Unhedged load pay
CAPITL	-14.35	2.82	-35.29	-16.82
CENTRL	-14.81	-0.75	-61.00	-21.61
DUNWOD	0.00	10.52	-0.31	-1.15
GENESE	-1.87	0.41	-9.01	-15.46
HQ	-15.70	-0.06	-21.13	2.08
HUDVL	-2.39	-1.75	-11.43	-19.68
LONGIL	89.01	145.37	175.35	96.38
MHKVL	-3.61	1.02	-10.36	-8.93
MILLWD	0.00	-4.78	-7.86	-11.67
NORTH	-1.67	1.07	-15.01	-6.39
NPX	-14.43	0.29	-13.06	2.37
NYC	91.58	187.54	167.31	78.11
OH	-6.79	0.08	-10.06	1.41
PJM	-50.71	0.13	-44.29	17.98
WEST	-8.07	-1.10	-44.83	-22.70
Totals	46.19	340.82	59.03	73.93
Sched1 & Shortfall Adj				14.90
NYCA Total	46.19	340.82	59.03	59.03



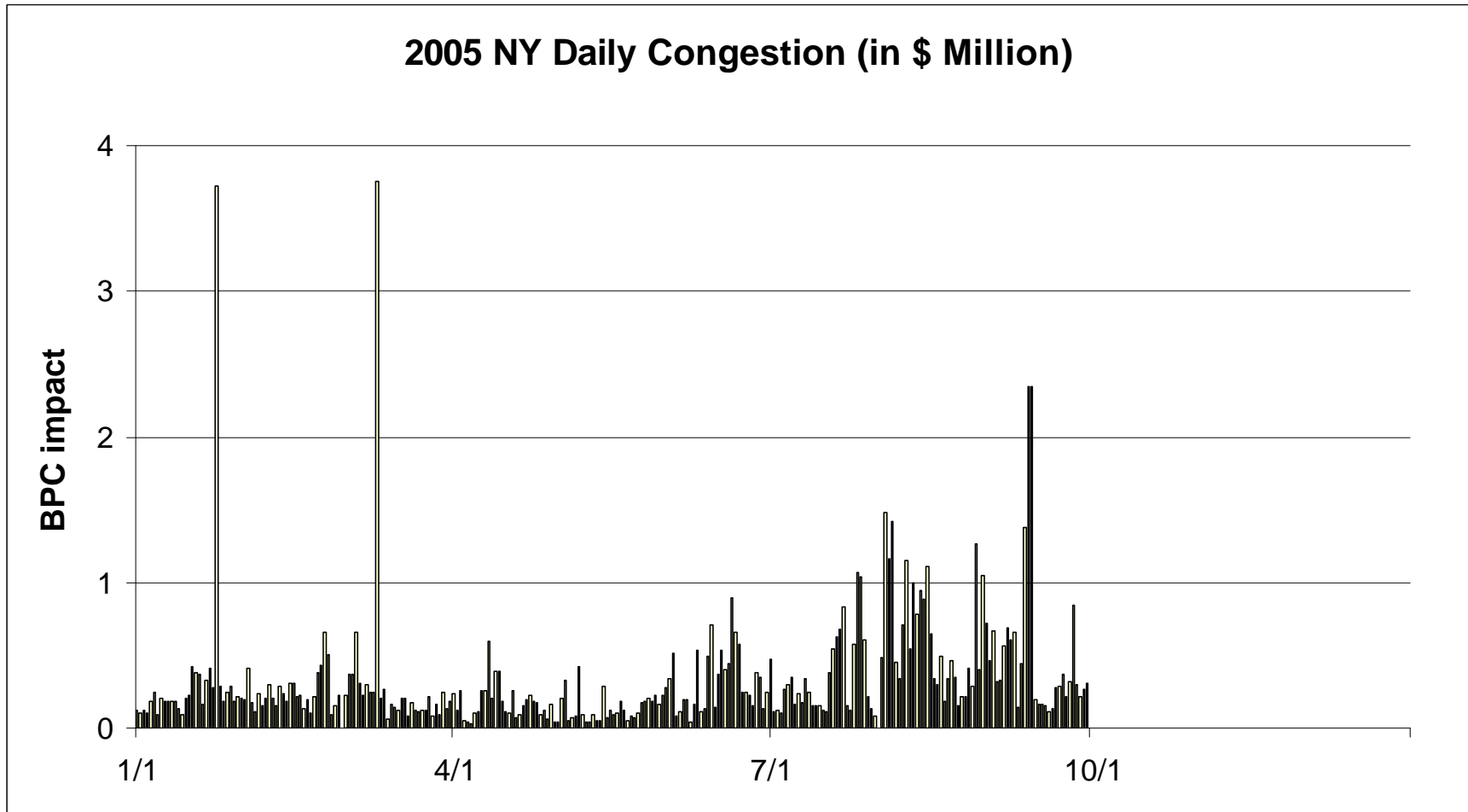
2005 Q3 Constraint summary

Unhedged Congestion Impact by Constraint (Price Increasing Impact only)

Monitored Facility	% of Q3 total	cumulative % of Q3 total
DUNWODIE 345 SHORE_RD 345 1	32.8	32.8
PLSNTVLY 345 LEEDS 345 1	25.8	58.6
RAINEY 138 VERNON 138 1	15.7	74.2
W49TH_ST 345 SPRNBRK 345 1	7.0	81.3
ASTORIAE 138 HELLGT_E 138 1	3.9	85.2
RAINEY 345 DUNWODIE 345 1	3.6	88.8
GREENWD 138 VERNON 138 1	2.6	91.4
CENTRAL EAST - VC	1.9	93.3
UPNY CONED	1.4	94.7
QUENBRDG 138 VERNON 138 1	1.2	95.9
RAMAPO 345 ROCKTVRN 345 1	1.1	97.0
HUDS_AVE 138 JAMAICA 138 1	0.8	97.7
LEEDS 345 N.SCTLND 345 1	0.7	98.5
SCH - HQ - NY	0.5	98.9



Congestion Impact By Day



2005 Q3 Congestion Impact Observations

- 2005 Q3 results compared to previous years
 - Heavier Q3 congestion (as measured by BPC metric)
 - Annual congestion higher than previous years
 - Difference tracked to overall higher bids
- In Q3
 - BPC spikes on Sep. 13 & 14
 - Not really unusual, NYC area constraints resulted in increased NYC generation production
 - Higher values overall consistent between SCUC and PROBE
- Constraints similar as in previous quarters and years
 - Number of critical constraints reduced (concentration of congestion)



Posting of Congestion Impact Reports

- 2003, 2004, 2005 Q1 already posted
- Posting
 - quarterly
 - in planning section of NYISO website
 - Excel spreadsheets, separate per report type
 - includes explanatory documents
- Next steps
 - Provide final Q3 update to group, once final data received and analyzed
 - Post Q3 numbers as soon as available
 - Continue updating quarterly results
 - Post cumulative annual congestion update
 - Improve post-SMD formatting changes

