

Congestion Impact Update

NYISO ESPWG
March 14, 2006

Manos Obessis

Draft – for discussion purposes only



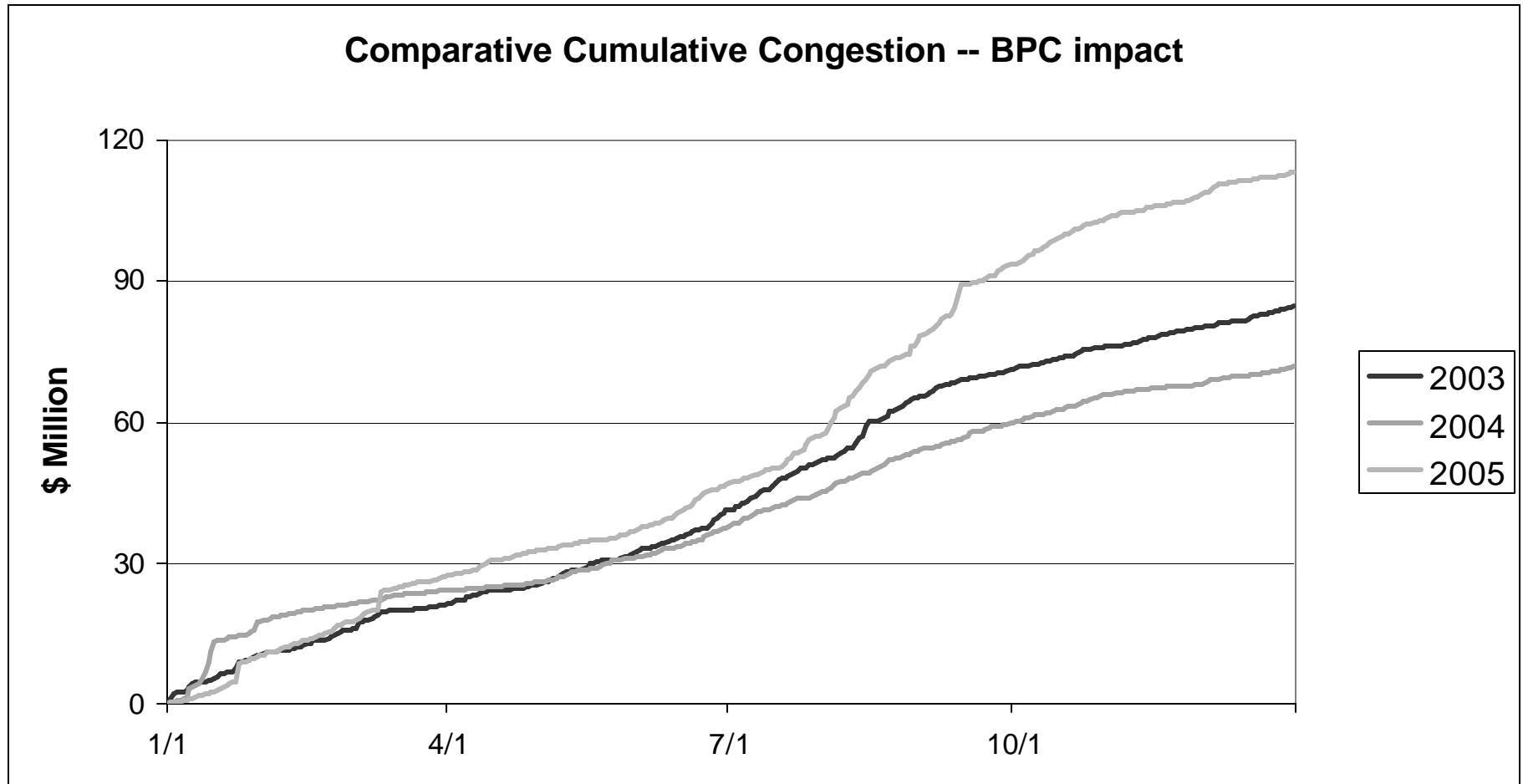
PowerGEM
Power Grid Engineering & Markets

Since last report ...

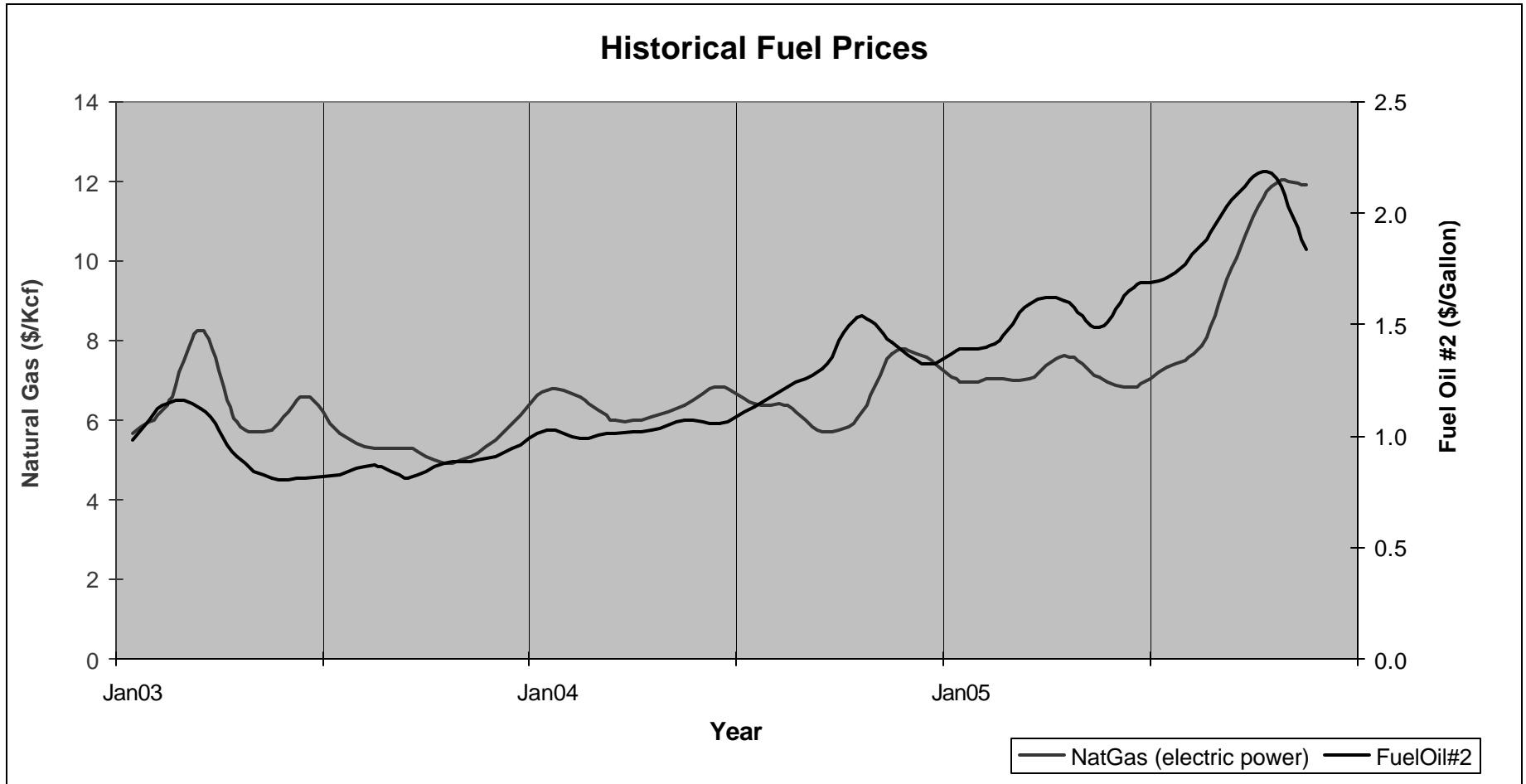
- Finalized 2005 Q3 Impact Metrics
 - Calculated 2005 Q4 Impact Metrics
 - Tabulated 2005 Annual Impact Metrics
 - Annual and Quarterly Congestion Numbers posted on NYISO Website
- NYISO (re) established automated data acquisition process



Multi-year comparison



Fuel Prices (for reference only...)



Multi-year comparison by numbers (BPC impact – in \$ Million)

	2003	2004	2005
Q1	21.1	24.1	27.2
Q2	20.1	13.5	19.4
Q3	29.9	22.1	46.7
Q4	13.5	12.0	20.1
Annual	84.6	71.7	113.4



Annual 2005 Metric summary

annual 2005 total congestion impact - mitigated bids (\$ Millions)

Zone	BPC mitig	Unhedged Cong	Gener pay	Unhedged load pay
CAPITL	-23.88	5.51	-57.97	-52.66
CENTRL	-71.74	-4.64	-214.27	-67.13
DUNWOD	0.00	22.22	-2.45	-8.81
GENESE	-3.53	-0.66	-28.34	-50.91
HQ	-45.91	-2.44	-58.83	1.98
HUDVL	-0.13	-19.50	-33.50	-70.95
LONGIL	247.27	336.38	451.07	210.97
MHKVL	-12.01	0.90	-32.97	-30.11
MILLWD	0.00	-33.42	-64.46	-53.78
NORTH	-2.30	1.74	-45.99	-24.05
NPX	-25.43	1.69	-22.51	1.90
NYC	210.17	385.27	360.63	97.99
OH	-25.81	0.00	-49.98	2.79
PJM	-107.87	-0.35	-123.10	24.59
WEST	-25.43	-7.61	-148.56	-76.01
Totals	113.38	685.09	-71.22	-94.19
Sched1 & Shortfall Adj				-22.97
NYCA Total	113.38	685.09	-71.22	-71.22



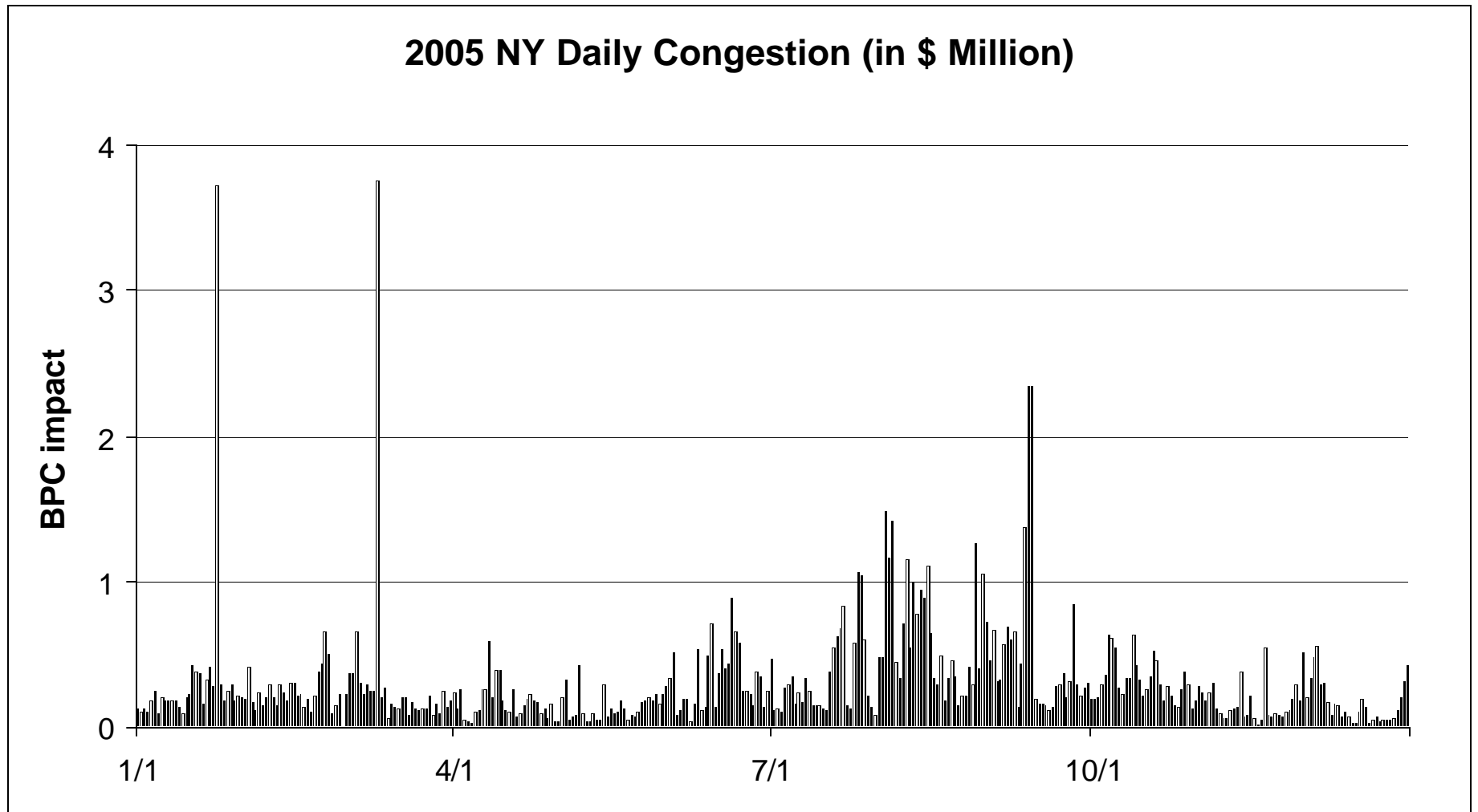
Annual 2005 Constraint summary

Unhedged Congestion Impact by Constraint (Price Increasing Impact only)

Monitored Facility	% of annual total	cumulative % of annual total
DUNWODIE 345 SHORE_RD 345 1	29.9	29.9
PLSNTVLY 345 LEEDS 345 1	17.3	47.2
W49TH_ST 345 SPRNBRK 345 1	14.3	61.5
RAINEY 138 VERNON 138 1	9.6	71.0
CENTRAL EAST - VC	9.2	80.2
RAINEY 345 DUNWODIE 345 1	2.9	83.1
CENTRAL EAST	2.5	85.6
ASTORIAE 138 HELLGT_E 138 1	2.2	87.8
RAINEY 345 DUNWODIE 345 2	2.1	89.9
QUENBRDG 138 VERNON 138 1	1.7	91.6
GREENWD 138 VERNON 138 1	1.2	92.8
E13THSTA 345 W49TH_ST 345 1	1.2	94.0
UPNY CONED	1.0	95.1
LEEDS 345 N.SCTLND 345 1	0.8	95.8
RAMAPO 345 ROCKTVRN 345 1	0.5	96.4
ATHENS 345 LEEDS 345 1	0.5	96.9
SHORE_RD 345 SHORE_RD 138 1	0.5	97.4
HUDS_AVE 138 JAMAICA 138 1	0.4	97.8
VALLYSTR 138 EGRDNCTY 138 1	0.4	98.2
SCH - HQ - NY	0.3	98.4
PLSNTVLY 345 ATHENS 345 1	0.3	98.7
SPRNBRK 345 EGRDNCTY 345 1	0.2	98.9
EGRDNCTY 138 NEWBRDGE 138 1	0.2	99.1



Congestion Impact By Day



2005 Congestion Impact Observations

- 2005 results compared to previous years
 - Annual congestion (as measured by BPC metric) higher
 - ‘Unusual’ spikes in Q1 contributed to increase
 - Overall higher bids in Q3-Q4 contributed to increase
- In general, constraints similar as in previous Q’s and years
 - Predominant constraints in southern NY
 - Leeds-PV inducing more congestion (as measured by BPC) than Central-East



Posting of Congestion Impact Reports

- 2003, 2004, 2005 quarterly and annual impact reports posted
- Reports previously missing for some quarters reposted
- Posting
 - quarterly
 - in planning section of NYISO website
 - Excel spreadsheets, separate per report type
 - includes explanatory documents
- Next steps
 - Continue updating quarterly results and post reports
 - Continue updating ESPWG on a quarterly basis
 - Validate automated data acquisition process

