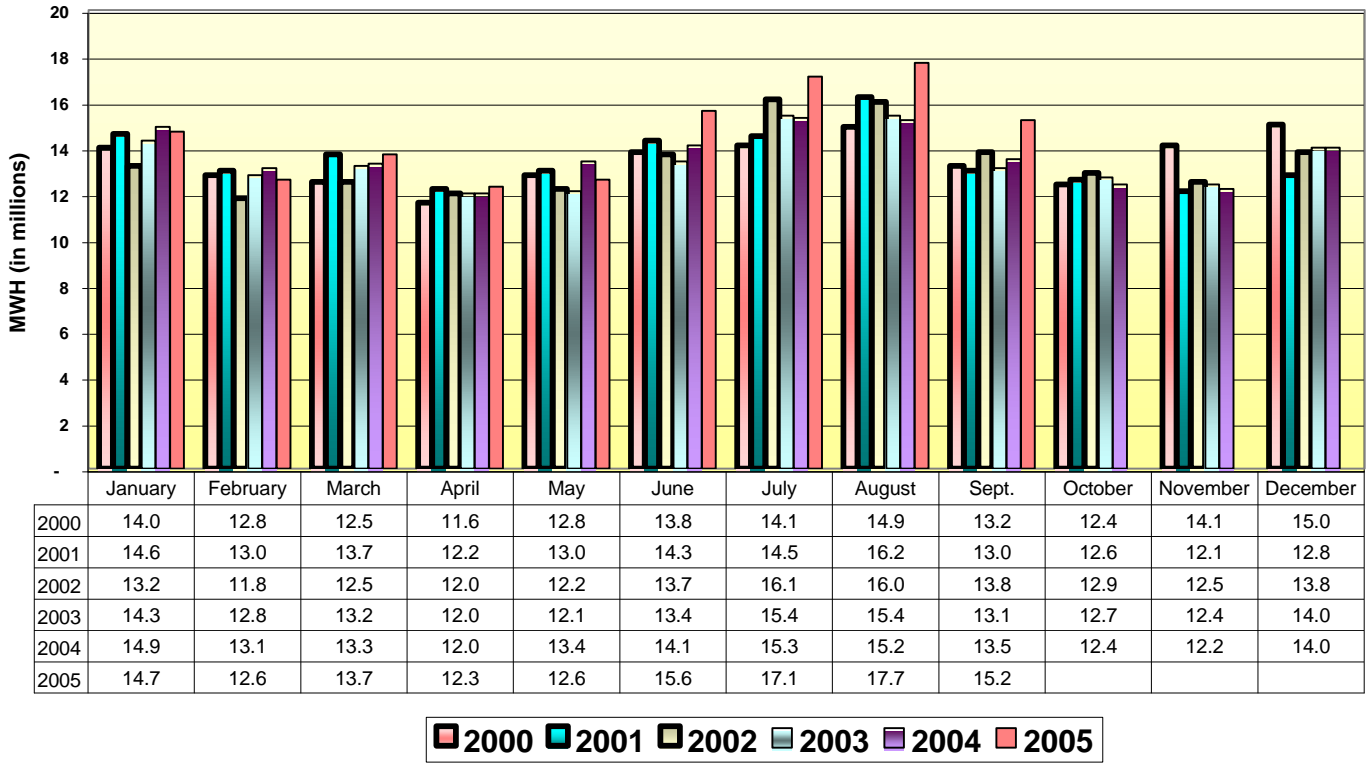


**NYISO
BSP SUBCOMMITTEE
OCTOBER 24, 2005 TELECONFERENCE**

**Load Comparison - By Month
2000 - 2005**



2005 Load Comparison: Forecast vs. Actual					
Invoice Month	Forecast Load	Actual Load	Monthly Differential	Cumulative Differential	Cumulative \$ Impact (in millions)
	<i>(millions of MWH)</i>				<i>Over/(Under)</i>
Jan	15.0	14.7	(0.3)	(0.3)	\$ (0.3)
Feb	13.1	12.6	(0.5)	(0.8)	\$ (0.6)
Mar	13.3	13.7	0.4	(0.4)	\$ (0.3)
Apr	12.0	12.3	0.3	(0.1)	\$ (0.1)
May	13.4	12.6	(0.8)	(0.9)	\$ (0.7)
Jun	14.1	15.6	1.5	0.6	\$ 0.5
Jul	15.2	17.1	1.9	2.5	\$ 2.0
Aug	15.2	17.7	2.5	5.0	\$ 3.9
Sep	13.5	15.2	1.7	6.7	\$ 5.3
Oct	12.4	TBD	TBD	TBD	TBD
Nov	12.4	TBD	TBD	TBD	TBD
Dec	14.1	TBD	TBD	TBD	TBD
Total	163.7	131.5	6.7		\$ 5.3