
NYISO President's Report

*Management Committee Meeting
March 29, 2006*

Agenda #3

Report Items

- Update on Price Error Elimination Progress
- Market Performance Highlights – For Information Only

Price Error Elimination Status

- Reservation and correction rate remains low
 - No new causes of errors logged in several months
 - Price Error Elimination Team continues to review potential solutions to difficult causes of errors
- Enhancements targeting price errors
 - Update to Load Forecaster deployed February 28th
 - Additional concepts being presented to MPs in April
- Enhanced price validation planning ongoing
- Cycle time to provide corrections continues to improve; current average well below targets

Recent Price Correction Statistics

Jan 2006	Reservations	Corrections	Tot. Hours	Through Date
Hours	41	20	744	Jan 31, 2006
% Hours w/o	94.5%	97.3%		
% Hours	5.5%	2.7%		

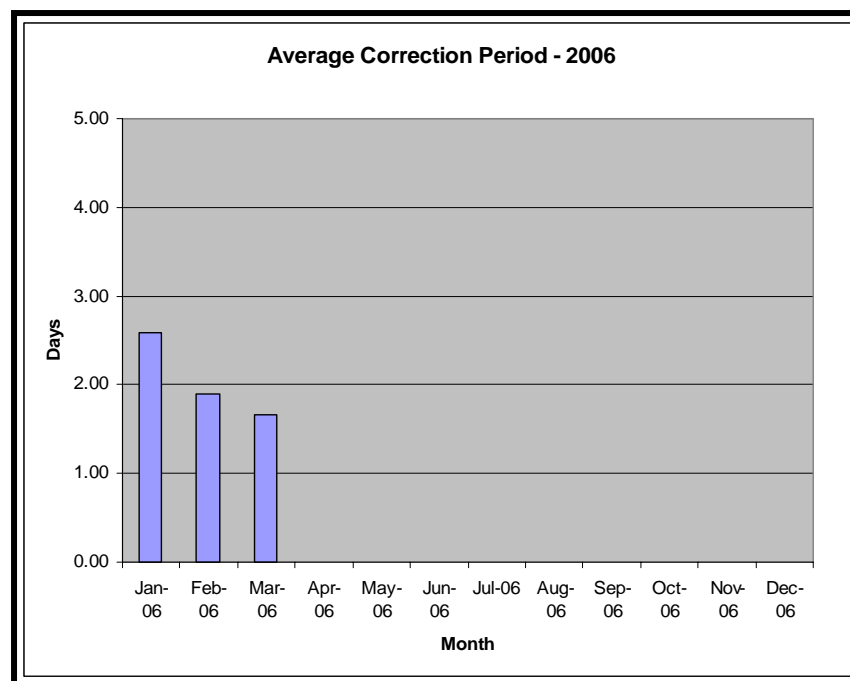
Feb 2006	Reservations	Corrections	Tot. Hours	Through Date
Hours	43	22	672	Feb 28, 2006
% Hours w/o	93.6%	96.7%		
% Hours	6.4%	3.3%		

Mar 2006 *	Reservations	Corrections	Tot. Hours	Through Date
Hours	24	10	432	Mar 18, 2006
% Hours w/o	94.4%	97.7%		
% Hours	5.6%	2.3%		

* - Data through 18 March 2006

Recent Price Correction Statistics (Cont.)

	Days Corrected	Avg	Max	Min	Std Dev
Jan-06	12	2.58	5	0	1.88
Feb-06	10	1.90	4	0	1.52
Mar-06*	6	1.67	4	0	1.37

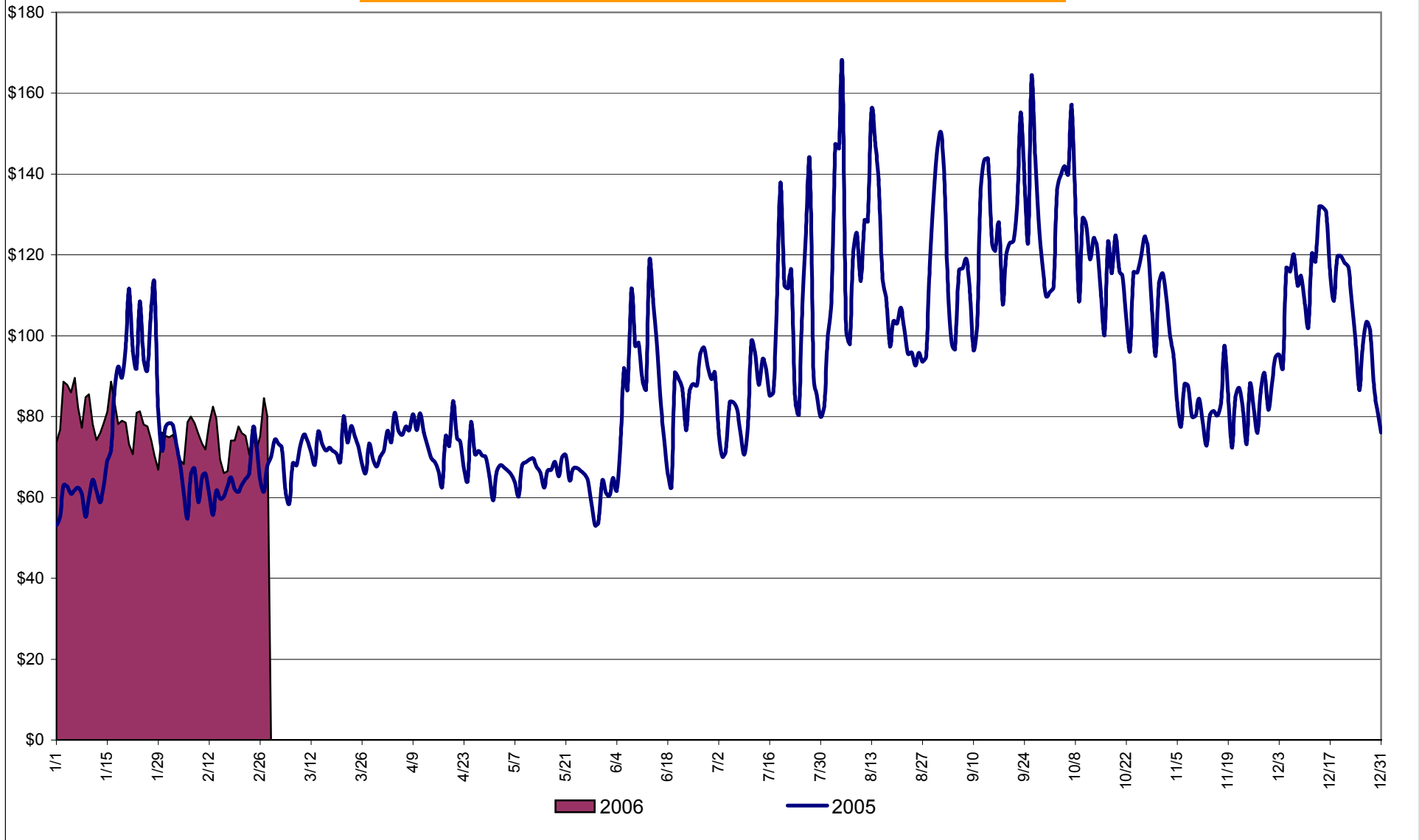


* - Data through 18 March 2006

Market Performance Highlights for February 2006

- **NYISO LBMP and Average Cost have decreased this month relative to January 2006.**
 - *LBMP for February is \$71.85/MWh, down from \$77.14/MWh in January.*
 - *Average cost is \$75.10/MWh, down from \$79.46/MWh in January.*
 - *Both Day Ahead and Real Time LBMPs have decreased this month.*
- **Fuel prices are all down this month.**
 - *Kerosene is \$13.02/mmBTU, down from \$13.78/mmBTU in January*
 - *No. 2 Fuel Oil is \$11.72/mmBTU, down from \$12.47/mmBTU in January*
 - *Natural Gas is \$8.63/mmBTU, down from \$9.43/mmBTU in January*
 - *No. 6 Fuel Oil is \$7.98/mmBTU, down from \$8.47/mmBTU in January*
- **Uplift has increased this month relative to January 2006.**
 - *Uplift (not including NYISO cost of operations) is \$0.37/MWh, up from \$(0.07)/MWh in January. This is primarily due to changes in residual costs.*
- **Regulation prices in all markets have increased this month relative to January.**

Daily NYISO Average Cost/MWh (Energy & Ancillary Services)*
2005 Annual Average \$93.89/MWh
February 2005 YTD Average \$73.25/MWh
February 2006 YTD Average \$77.39/MWh



* Excludes ICAP payments.

NYISO Average Cost/MWh (Energy and Ancillary Services) *
from the LBMP Customer point of view

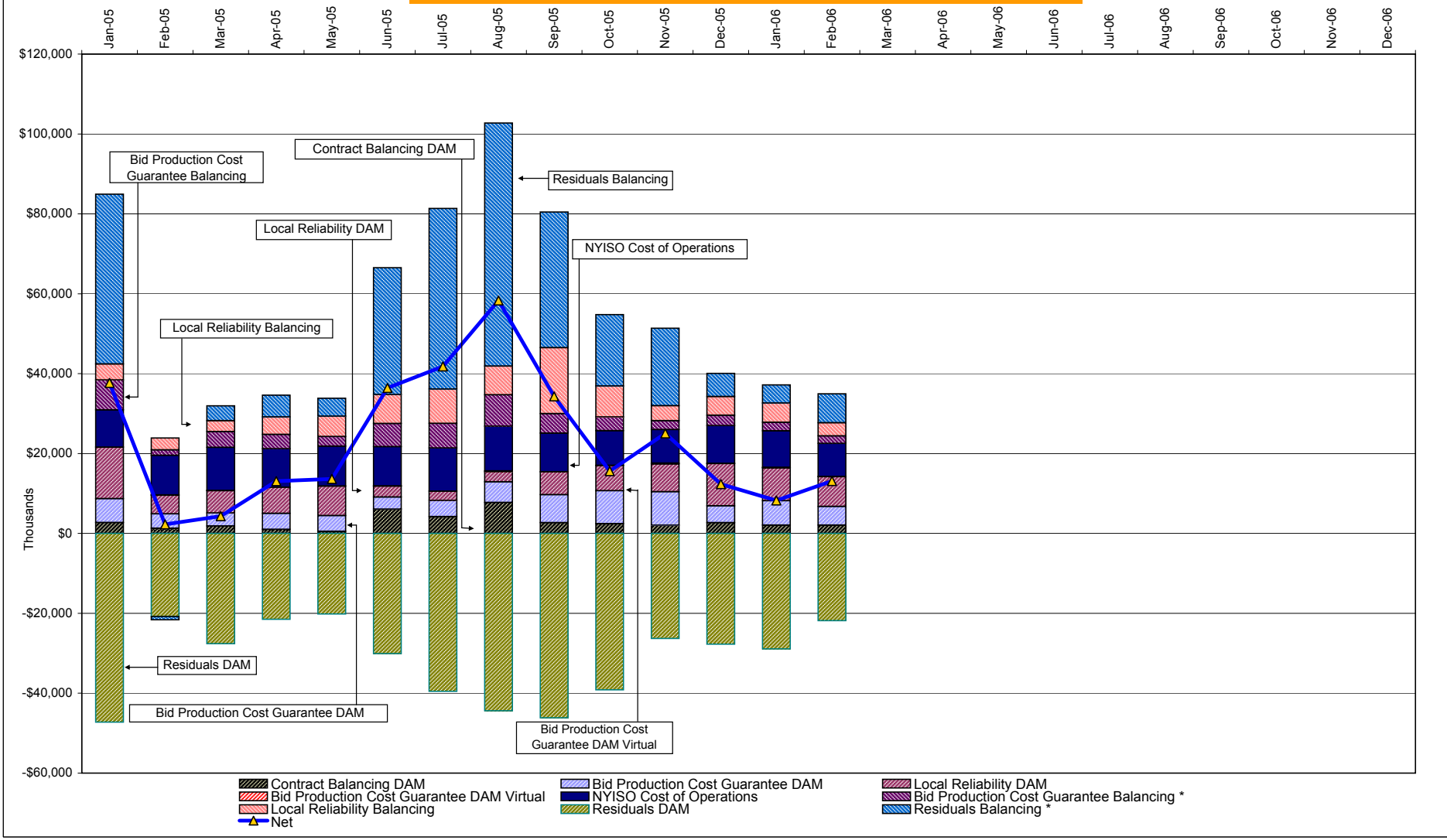
2006	<u>January</u>	<u>February</u>	<u>March</u>	<u>April</u>	<u>May</u>	<u>June</u>	<u>July</u>	<u>August</u>	<u>September</u>	<u>October</u>	<u>November</u>	<u>December</u>
LBMP	77.14	71.85										
NTAC	0.47	0.90										
Reserve	0.35	0.30										
Regulation	0.56	0.68										
NYISO Cost of Operations	0.64	0.64										
Uplift	(0.07)	0.37										
Voltage Support and Black Start	<u>0.36</u>	<u>0.36</u>										
Avg Monthly Cost	79.46	75.10										
Avg YTD Cost	79.46	77.39										

2005	<u>January</u>	<u>February</u>	<u>March</u>	<u>April</u>	<u>May</u>	<u>June</u>	<u>July</u>	<u>August</u>	<u>September</u>	<u>October</u>	<u>November</u>	<u>December</u>
LBMP	75.70	64.03	69.95	71.28	63.13	84.83	92.42	115.19	122.40	118.56	82.00	106.11
NTAC	0.42	0.36	0.23	0.49	0.40	0.58	0.46	0.25	0.10	0.03	0.39	0.64
Reserve	0.24	0.08	0.17	0.21	0.20	(0.01)	0.11	0.02	0.31	0.54	0.34	0.38
Regulation	0.32	0.40	0.34	0.22	0.25	0.20	0.15	0.06	0.41	0.64	0.70	0.53
NYISO Cost of Operations	0.63	0.79	0.79	0.79	0.79	0.63	0.63	0.63	0.63	0.63	0.63	0.63
Uplift	1.99	(0.59)	(0.47)	0.29	0.30	1.85	1.95	2.76	1.68	0.52	1.26	0.17
Voltage Support and Black Start	<u>0.39</u>	<u>0.39</u>	<u>0.39</u>	<u>0.39</u>	<u>0.39</u>	<u>0.39</u>	<u>0.39</u>	<u>0.39</u>	<u>0.39</u>	<u>0.39</u>	<u>0.39</u>	<u>0.39</u>
Avg Monthly Cost	79.70	65.45	71.38	73.67	65.46	88.48	96.09	119.29	125.93	121.32	85.72	108.85
Avg YTD Cost	79.70	73.25	72.61	72.86	71.56	74.91	78.90	85.52	90.31	93.10	92.53	93.89

* Excludes ICAP payments.

These numbers reflect the rebilling of prior periods.

NYISO Dollar Flows - Uplift - OATT Schedule 1 components



DAM Contract Balancing amounts are for payments made to generating units to make them whole for being dispatched below their Day-Ahead schedule, as a result of out-of-merit dispatches.
 DAM Bid Production Cost Guarantees for Virtual Transactions are included in the chart and are shown from the inception of Virtual Transactions. These values are small and cannot be identified on the chart.
 DAM residuals are revenue charged or returned to customers due to the under or over collection of funds. On this chart, negative values represent funds returned to Transmission Customers (through Transmission Owners' Transmission Service Charges).

* Effective November 2005 codes 81305 and 81312 have been re-categorized from BPCG Balancing to Residuals Balancing so as to better reflect their uplift type (see 4-AF). All months have been adjusted accordingly.

NYISO Markets Transactions

2006	<u>January</u>	<u>February</u>	<u>March</u>	<u>April</u>	<u>May</u>	<u>June</u>	<u>July</u>	<u>August</u>	<u>September</u>	<u>October</u>	<u>November</u>	<u>December</u>
Day Ahead Market MWh	13,877,416	12,532,754										
DAM LSE Internal LBMP Energy Sales	46%	47%										
DAM External TC LBMP Energy Sales	4%	3%										
DAM Bilateral - Internal Bilaterals	47%	47%										
DAM Bilateral - Import/Non-LBMP Market Bilaterals	2%	2%										
DAM Bilateral - Export/Non-LBMP Market Bilaterals	1%	1%										
DAM Bilateral - Wheel Through Bilaterals	0%	0%										
Balancing Energy Market MWh	300,904	322,333										
Balancing Energy LSE Internal LBMP Energy Sales	3%	22%										
Balancing Energy External TC LBMP Energy Sales	86%	74%										
Balancing Energy Bilateral - Internal Bilaterals	5%	2%										
Balancing Energy Bilateral - Import/Non-LBMP Market Bilaterals	2%	1%										
Balancing Energy Bilateral - Export/Non-LBMP Market Bilaterals	1%	1%										
Balancing Energy Bilateral - Wheel Through Bilaterals	4%	1%										
Transactions Summary												
LBMP	51%	50%										
Internal Bilaterals	46%	46%										
Import Bilaterals	2%	2%										
Export Bilaterals	1%	1%										
Wheels Through	0%	0%										
Market Share of Total Load												
Day Ahead Market	97.9%	97.5%										
Balancing Energy †	2.1%	2.5%										
Total MWh	14,178,320	12,855,086										
Average Daily Energy Sendout/Month GWh	439	444										
2005	<u>January</u>	<u>February</u>	<u>March</u>	<u>April</u>	<u>May</u>	<u>June</u>	<u>July</u>	<u>August</u>	<u>September</u>	<u>October</u>	<u>November</u>	<u>December</u>
Day Ahead Market MWh	14,281,481	12,510,148	13,410,579	12,215,628	12,773,478	14,981,363	16,344,465	16,587,663	14,706,243	13,309,658	12,893,992	14,418,648
DAM LSE Internal LBMP Energy Sales	48%	49%	52%	52%	45%	50%	53%	52%	49%	46%	45%	46%
DAM External TC LBMP Energy Sales	3%	1%	1%	1%	3%	3%	3%	4%	6%	4%	4%	5%
DAM Bilateral - Internal Bilaterals	47%	48%	45%	44%	50%	44%	42%	42%	43%	47%	48%	46%
DAM Bilateral - Import/Non-LBMP Market Bilaterals	1%	1%	1%	0%	0%	1%	1%	1%	2%	2%	2%	2%
DAM Bilateral - Export/Non-LBMP Market Bilaterals	1%	1%	1%	1%	2%	1%	1%	1%	1%	1%	1%	1%
DAM Bilateral - Wheel Through Bilaterals	1%	0%	1%	0%	0%	1%	0%	0%	0%	0%	0%	0%
Balancing Energy Market MWh	414,096	123,162	329,431	58,175	-101,200	582,604	796,586	1,107,346	544,610	384,383	365,677	515,733
Balancing Energy LSE Internal LBMP Energy Sales	77%	-39%	22%	-336%	-307%	46%	73%	73%	33%	4%	-15%	41%
Balancing Energy External TC LBMP Energy Sales	43%	161%	77%	463%	208%	45%	23%	21%	51%	93%	100%	49%
Balancing Energy Bilateral - Internal Bilaterals	-13%	-9%	7%	-27%	5%	5%	6%	6%	13%	4%	13%	11%
Balancing Energy Bilateral - Import/Non-LBMP Market Bilaterals	0%	0%	0%	0%	0%	0%	0%	0%	0%	0%	0%	0%
Balancing Energy Bilateral - Export/Non-LBMP Market Bilaterals	1%	0%	0%	2%	2%	1%	1%	0%	0%	1%	1%	1%
Balancing Energy Bilateral - Wheel Through Bilaterals	-8%	-13%	-5%	-2%	-8%	3%	-2%	1%	3%	-1%	2%	-1%
Transactions Summary												
LBMP	53%	51%	54%	54%	47%	54%	58%	58%	56%	52%	50%	52%
Internal Bilaterals	45%	47%	44%	44%	50%	43%	40%	39%	42%	45%	47%	45%
Import Bilaterals	1%	1%	1%	0%	0%	1%	1%	1%	1%	2%	2%	2%
Export Bilaterals	1%	1%	1%	1%	2%	1%	1%	1%	1%	1%	1%	1%
Wheels Through	0%	0%	0%	0%	0%	1%	0%	0%	0%	0%	0%	0%
Market Share of Total Load												
Day Ahead Market	97.2%	99.0%	97.6%	99.5%	100.8%	96.3%	95.4%	93.7%	96.4%	97.2%	97.2%	96.5%
Balancing Energy †	2.8%	1.0%	2.4%	0.5%	-0.8% *	3.7%	4.6%	6.3%	3.6%	2.8%	2.8%	3.5%
Total MWh	14,695,577	12,633,310	13,740,011	12,273,803	12,672,278	15,563,968	17,141,051	17,695,009	15,250,854	13,694,041	13,259,669	14,934,381
Average Daily Energy Sendout/Month GWh	462	447	433	399	395	501	536	549	478	418	419	454

† Balancing Energy: Load(MW) purchased at Real Time LBMP.

* The signs for the detail section intuitively reflect the direction of power flow eliminating the use of double negatives when Balancing Energy is negative.

Notes: Percent totals may not equal 100% due to rounding.
Virtual Transactions are not reflected in this chart.

NYISO Markets 2006 Energy Statistics

	<u>January</u>	<u>February</u>	<u>March</u>	<u>April</u>	<u>May</u>	<u>June</u>	<u>July</u>	<u>August</u>	<u>September</u>	<u>October</u>	<u>November</u>	<u>December</u>
<u>DAY AHEAD LBMP</u>												
Price *	\$73.28	\$68.90										
Standard Deviation	\$15.03	\$12.95										
Load Weighted Price **	\$75.09	\$70.34										
<u>RTC *** LBMP</u>												
Price *	\$70.25	\$63.41										
Standard Deviation	\$26.63	\$15.86										
Load Weighted Price **	\$71.94	\$64.44										
<u>REAL TIME LBMP</u>												
Price *	\$70.91	\$63.96										
Standard Deviation	\$31.34	\$20.06										
Load Weighted Price **	\$73.18	\$65.38										
Average Daily Energy Sendout/Month GWh	439	444										

NYISO Markets 2005 Energy Statistics

	<u>January</u>	<u>February</u>	<u>March</u>	<u>April</u>	<u>May</u>	<u>June</u>	<u>July</u>	<u>August</u>	<u>September</u>	<u>October</u>	<u>November</u>	<u>December</u>
<u>DAY AHEAD LBMP</u>												
Price *	\$69.55	\$61.04	\$67.17	\$68.14	\$59.59	\$75.49	\$83.75	\$102.33	\$115.47	\$110.99	\$78.56	\$101.24
Standard Deviation	\$23.42	\$12.00	\$12.49	\$14.20	\$13.39	\$22.85	\$24.32	\$31.65	\$32.31	\$28.39	\$21.07	\$26.32
Load Weighted Price **	\$72.26	\$62.42	\$68.61	\$69.92	\$61.44	\$79.64	\$88.09	\$107.34	\$120.22	\$115.20	\$81.05	\$104.27
<u>RTC *** LBMP</u>												
Price *	\$74.47	\$55.93	\$70.40	\$69.92	\$61.59	\$85.42	\$94.96	\$129.60	\$116.00	\$108.53	\$74.02	\$94.86
Standard Deviation	\$44.64	\$16.80	\$26.13	\$23.51	\$59.20	\$62.91	\$68.35	\$116.09	\$44.35	\$42.95	\$33.43	\$40.18
Load Weighted Price **	\$77.48	\$57.10	\$72.12	\$71.72	\$64.16	\$90.25	\$100.76	\$138.00	\$120.72	\$112.25	\$76.57	\$97.73
<u>REAL TIME LBMP</u>												
Price *	\$70.25	\$57.57	\$68.04	\$64.95	\$57.20	\$77.75	\$90.48	\$122.21	\$114.94	\$110.90	\$74.62	\$94.16
Standard Deviation	\$31.79	\$20.48	\$32.50	\$26.06	\$42.34	\$55.70	\$72.95	\$103.00	\$42.92	\$55.35	\$36.61	\$40.67
Load Weighted Price **	\$73.26	\$58.86	\$69.88	\$66.77	\$59.04	\$83.96	\$96.82	\$130.69	\$120.36	\$115.69	\$77.51	\$97.64
Average Daily Energy Sendout/Month GWh	462	447	433	399	395	501	536	549	478	418	419	454

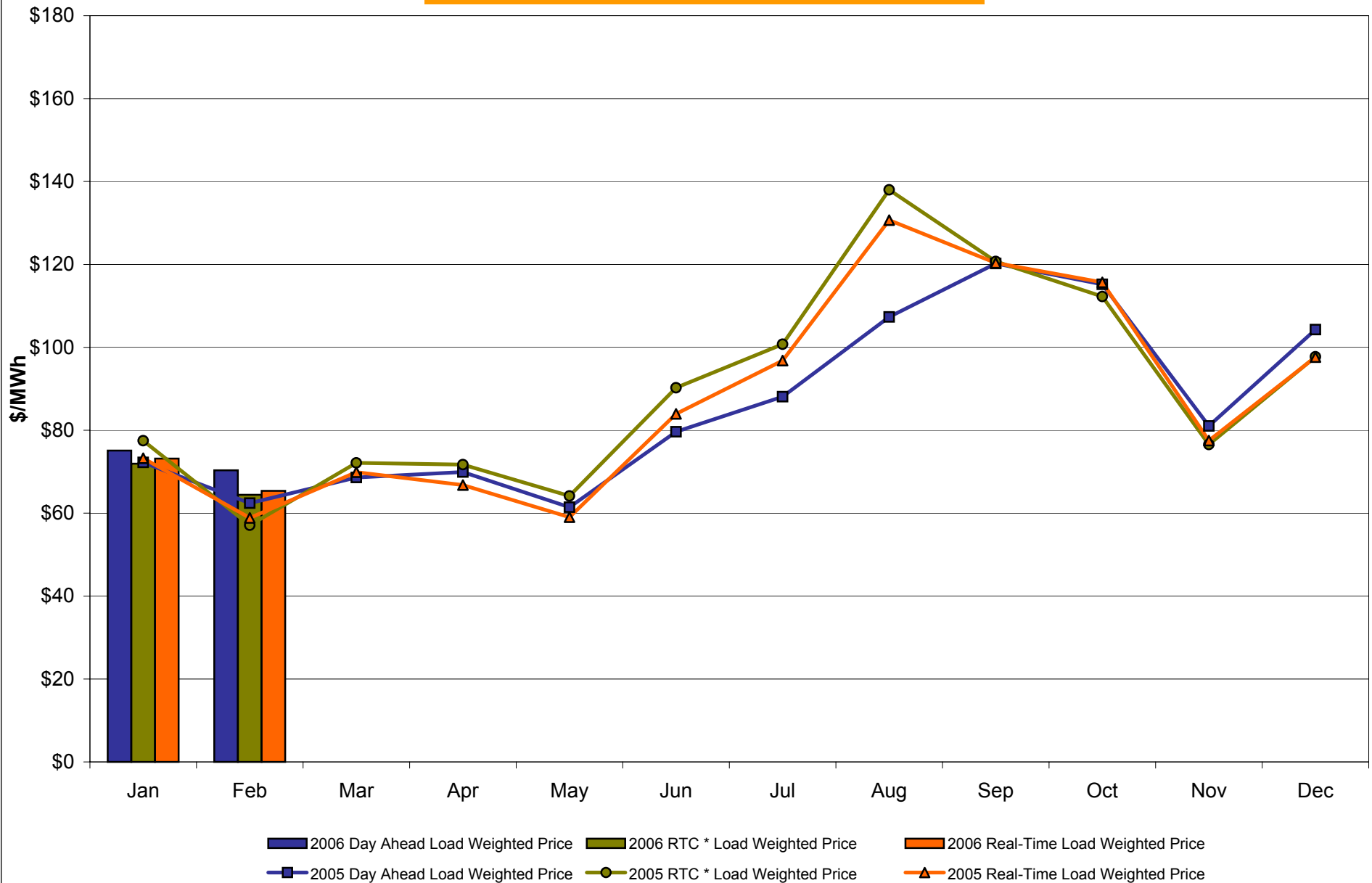
* Average zonal load weighted prices.

** Average zonal load weighted prices, load weighted in each hour.

*** Referred to as RTC beginning February 2005.

Prior to February 2005 known as BME or Hour Ahead Market (HAM).

NYISO Monthly Average Internal LBMPs 2005 - 2006



* Referred to as RTC beginning February 2005.
Prior to February 2005 known as BME or Hour Ahead Market (HAM).

February 2006 Zonal LBMP Statistics for NYISO (\$/MWh)

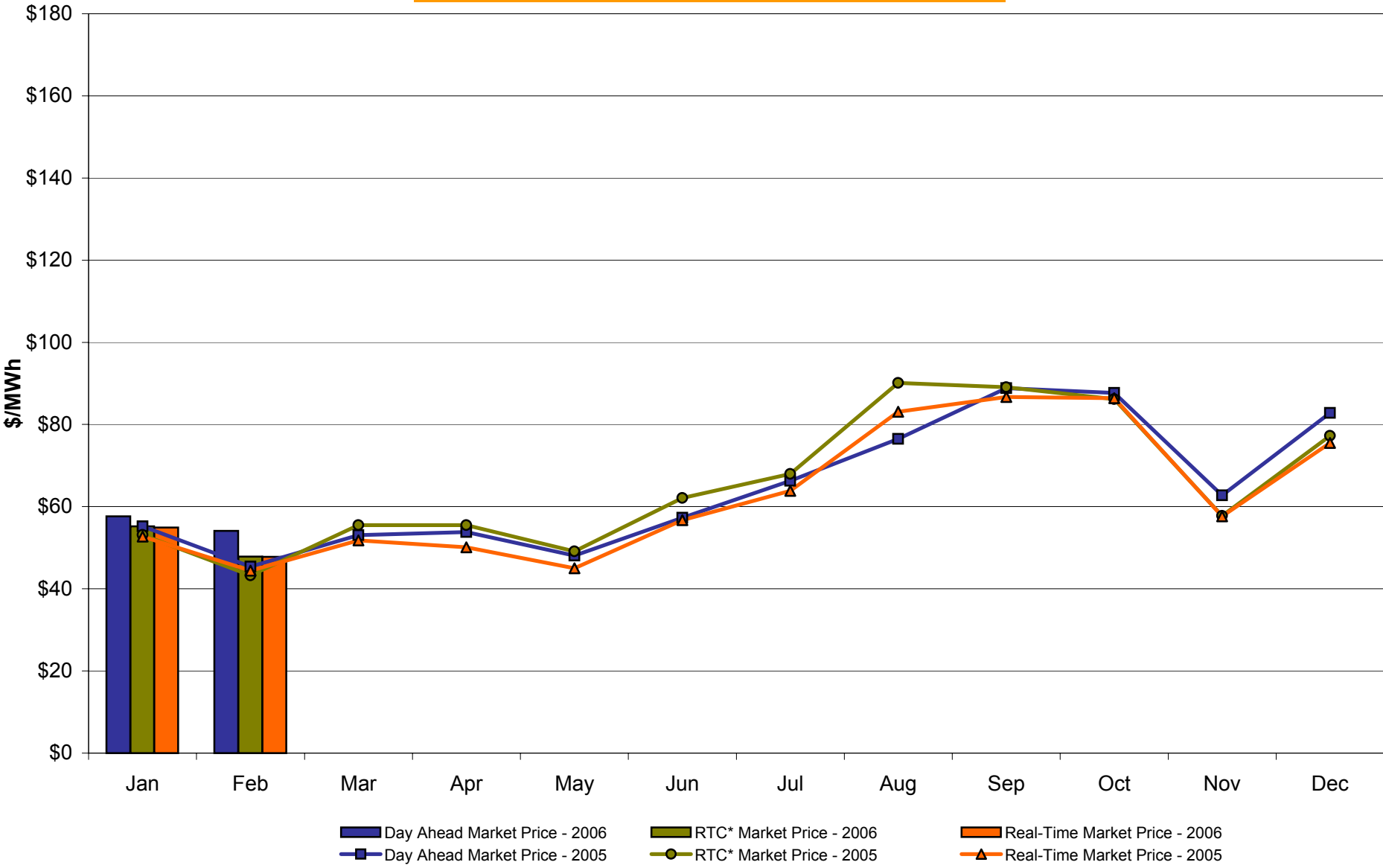
	<u>WEST Zone A</u>	<u>GENESEE Zone B</u>	<u>NORTH Zone D</u>	<u>CENTRAL Zone C</u>	<u>MOHAWK VALLEY Zone E</u>	<u>CAPITAL Zone F</u>	<u>HUDSON VALLEY Zone G</u>	<u>MILLWOOD Zone H</u>	<u>DUNWOODIE Zone I</u>	<u>NEW YORK CITY Zone J</u>	<u>LONG ISLAND Zone K</u>
<u>DAY AHEAD LBMP</u>											
Unweighted Price *	54.11	57.26	59.81	59.23	61.51	67.24	67.76	68.43	68.72	72.22	93.18
Standard Deviation	9.51	10.20	10.40	10.63	11.04	13.16	13.19	13.51	13.40	15.10	18.35
<u>RTC** LBMP</u>											
Unweighted Price *	47.85	50.35	53.36	53.49	55.40	64.24	63.85	64.14	64.14	66.11	88.66
Standard Deviation	13.94	14.86	15.49	14.92	15.60	20.19	17.61	17.76	17.69	18.66	31.42
<u>REAL TIME LBMP</u>											
Unweighted Price *	47.81	50.43	52.89	53.14	54.97	64.29	63.74	64.02	64.02	66.68	92.54
Standard Deviation	16.07	17.48	18.22	17.65	18.44	26.79	22.94	23.14	23.04	24.29	40.01
	<u>ONTARIO IESO Zone O</u>	<u>HYDRO QUEBEC Zone M</u>	<u>PJM Zone P</u>	<u>NEW ENGLAND Zone N</u>	<u>CROSS SOUND CABLE Controllable Line</u>						
<u>DAY AHEAD LBMP</u>											
Unweighted Price *	52.79	60.10	56.91	67.16	92.99						
Standard Deviation	9.35	10.42	10.96	13.04	18.01						
<u>RTC** LBMP</u>											
Unweighted Price *	45.56	52.90	50.15	63.00	87.81						
Standard Deviation	12.12	13.60	14.25	15.07	30.31						
<u>REAL TIME LBMP</u>											
Unweighted Price *	46.37	53.00	50.86	64.02	92.59						
Standard Deviation	16.03	18.23	17.58	24.84	39.39						

* Straight zonal LBMP averages

** Referred to as RTC beginning February 2005

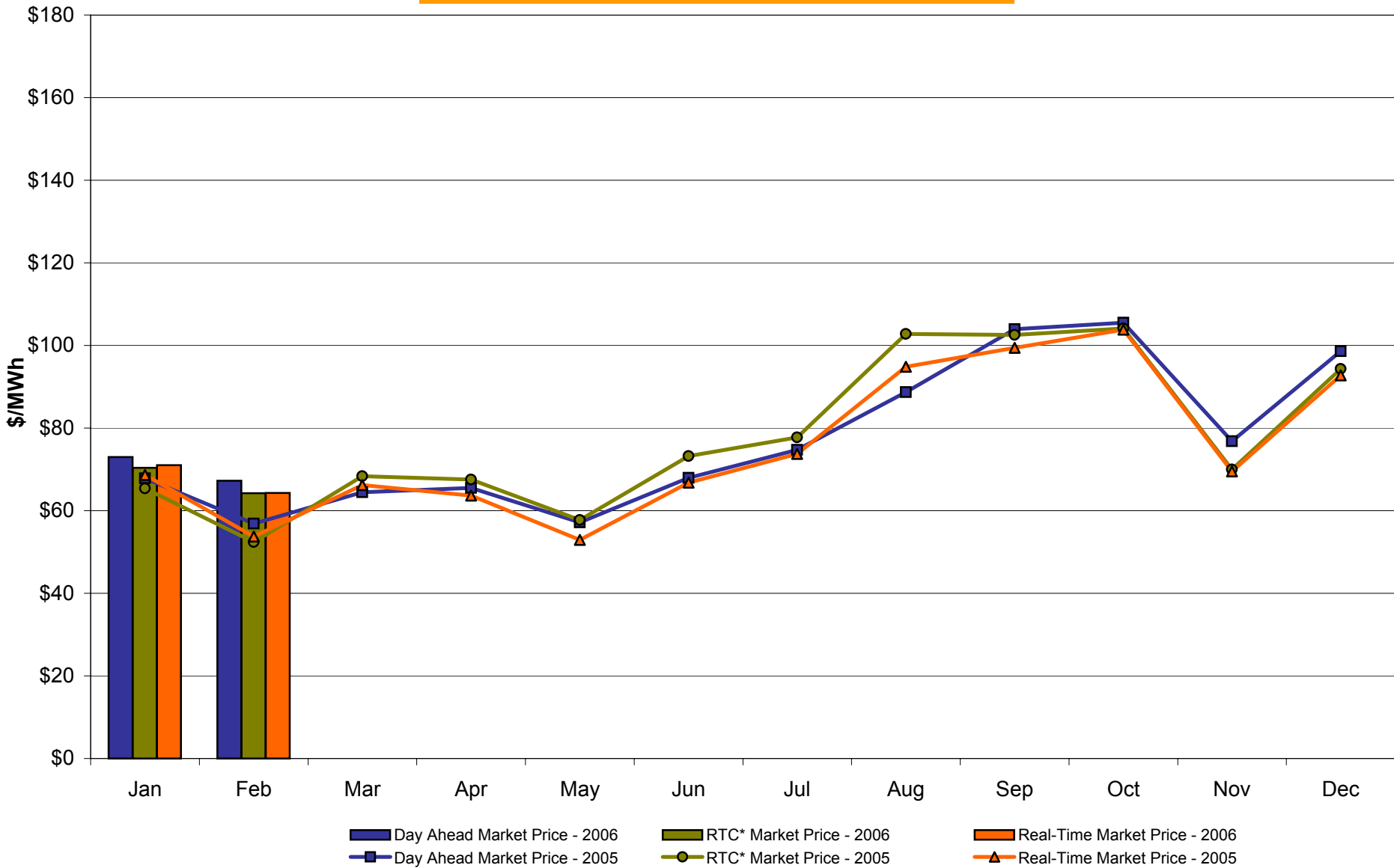
Prior to February 2005 known as BME or Hour Ahead Market (HAM)

West Zone A Monthly Average LBMP Prices 2005 - 2006



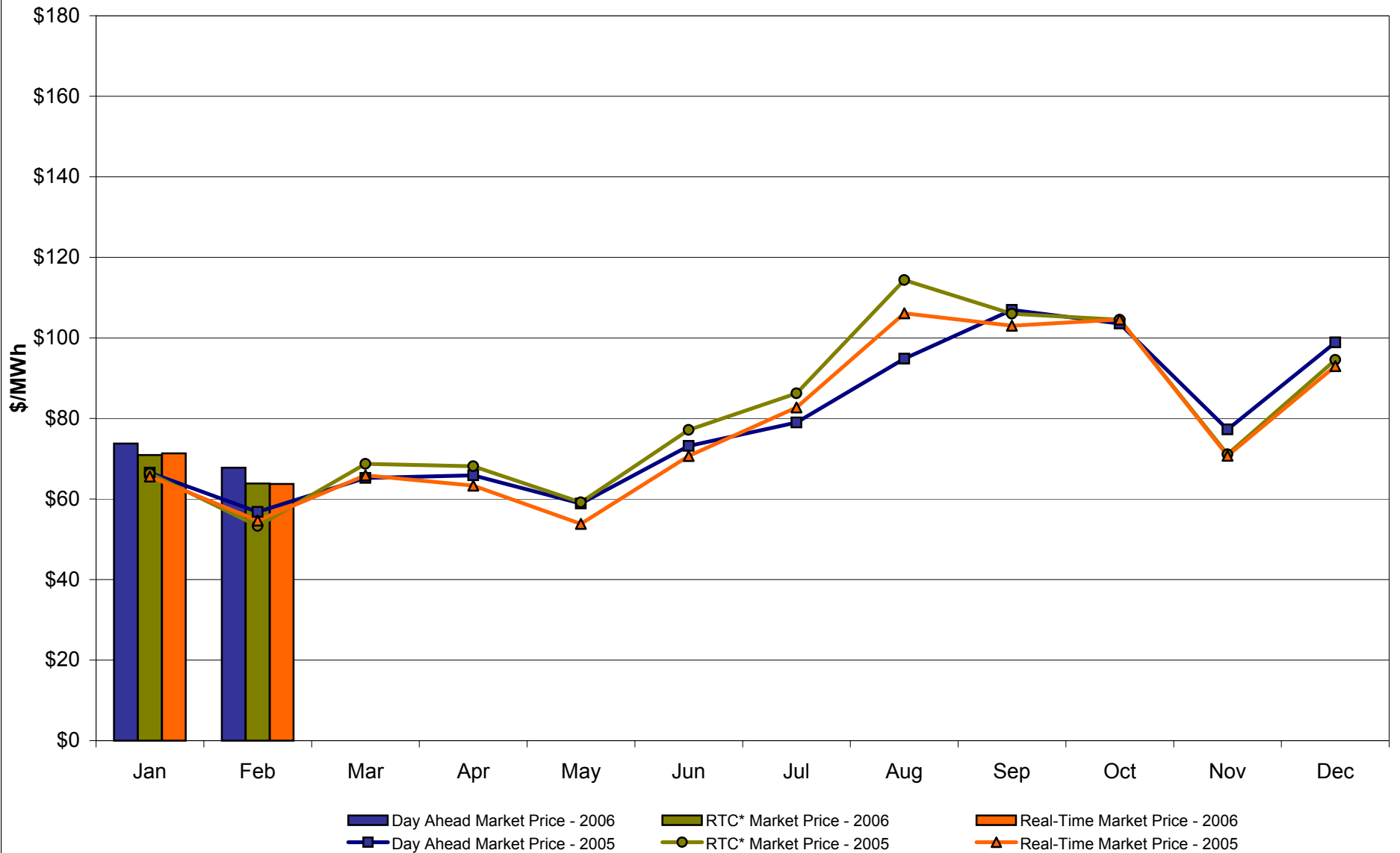
* Referred to as RTC beginning February 2005.
Prior to February 2005 known as BME or Hour Ahead Market (HAM).

Capital Zone F Monthly Average LBMP Prices 2005 - 2006



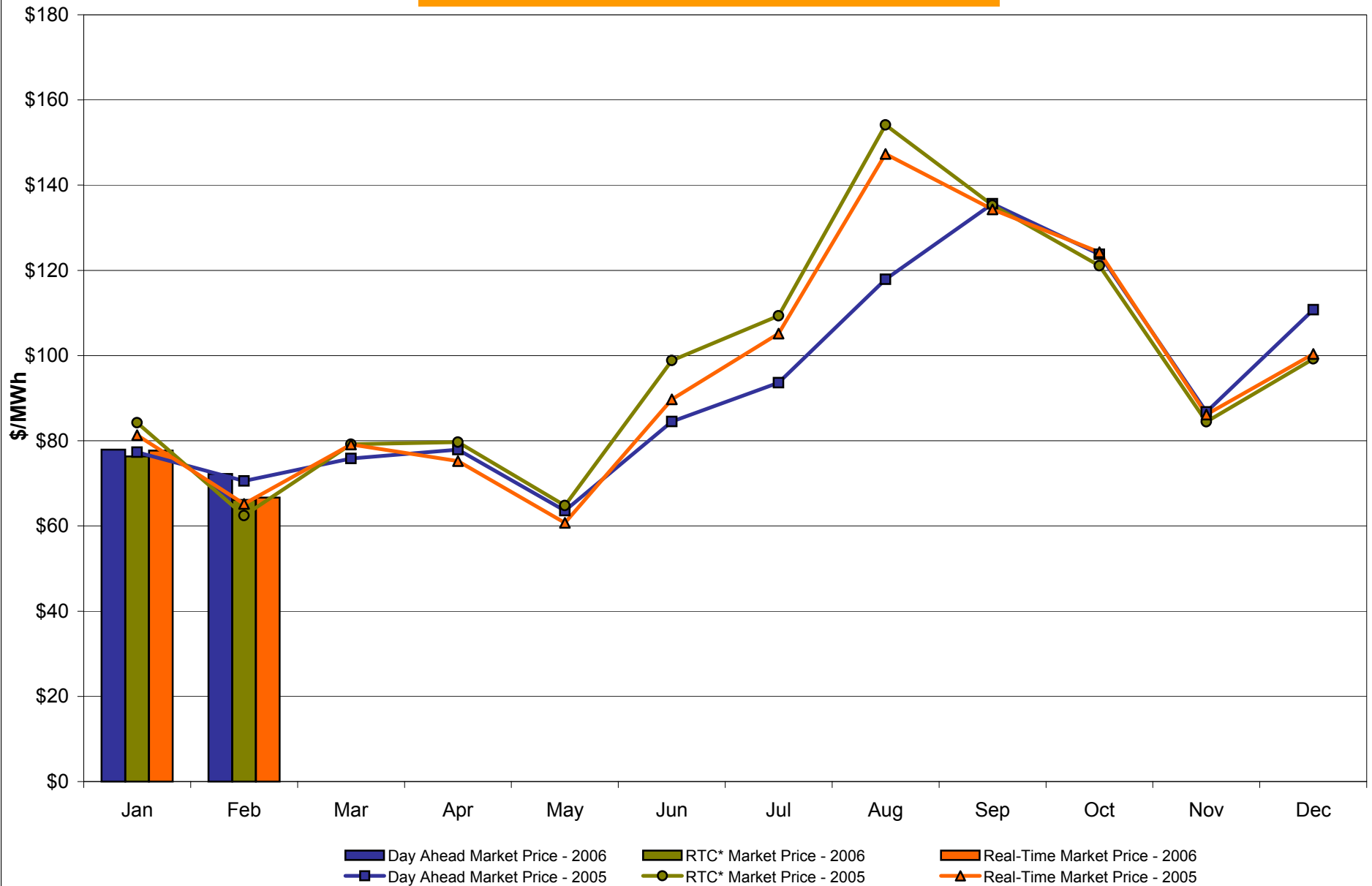
* Referred to as RTC beginning February 2005.
Prior to February 2005 known as BME or Hour Ahead Market (HAM).

Hudson Valley Zone G Monthly Average LBMP Prices 2005 - 2006



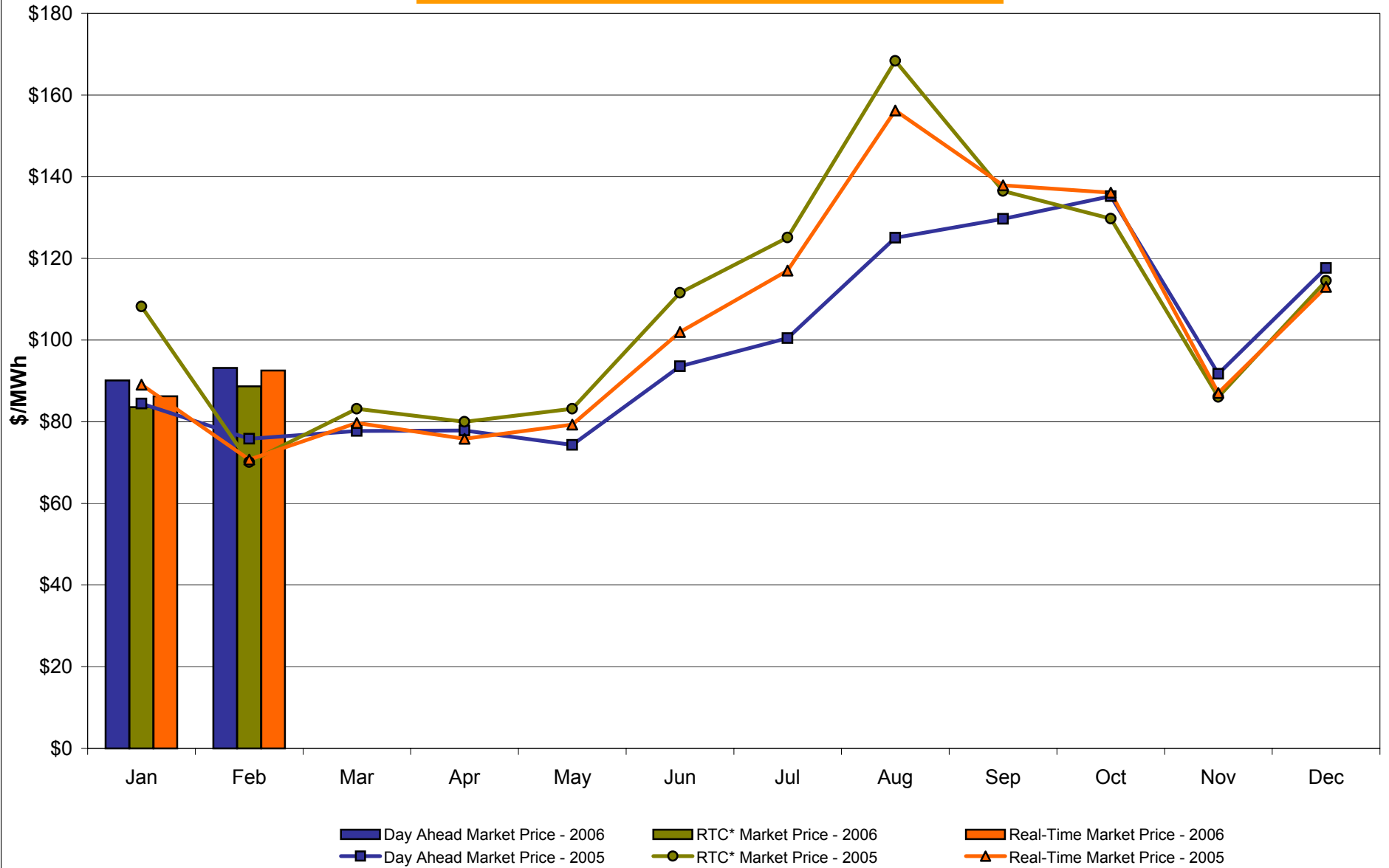
* Referred to as RTC beginning February 2005.
Prior to February 2005 known as BME or Hour Ahead Market (HAM).

NYC Zone J Monthly Average LBMP Prices 2005 - 2006



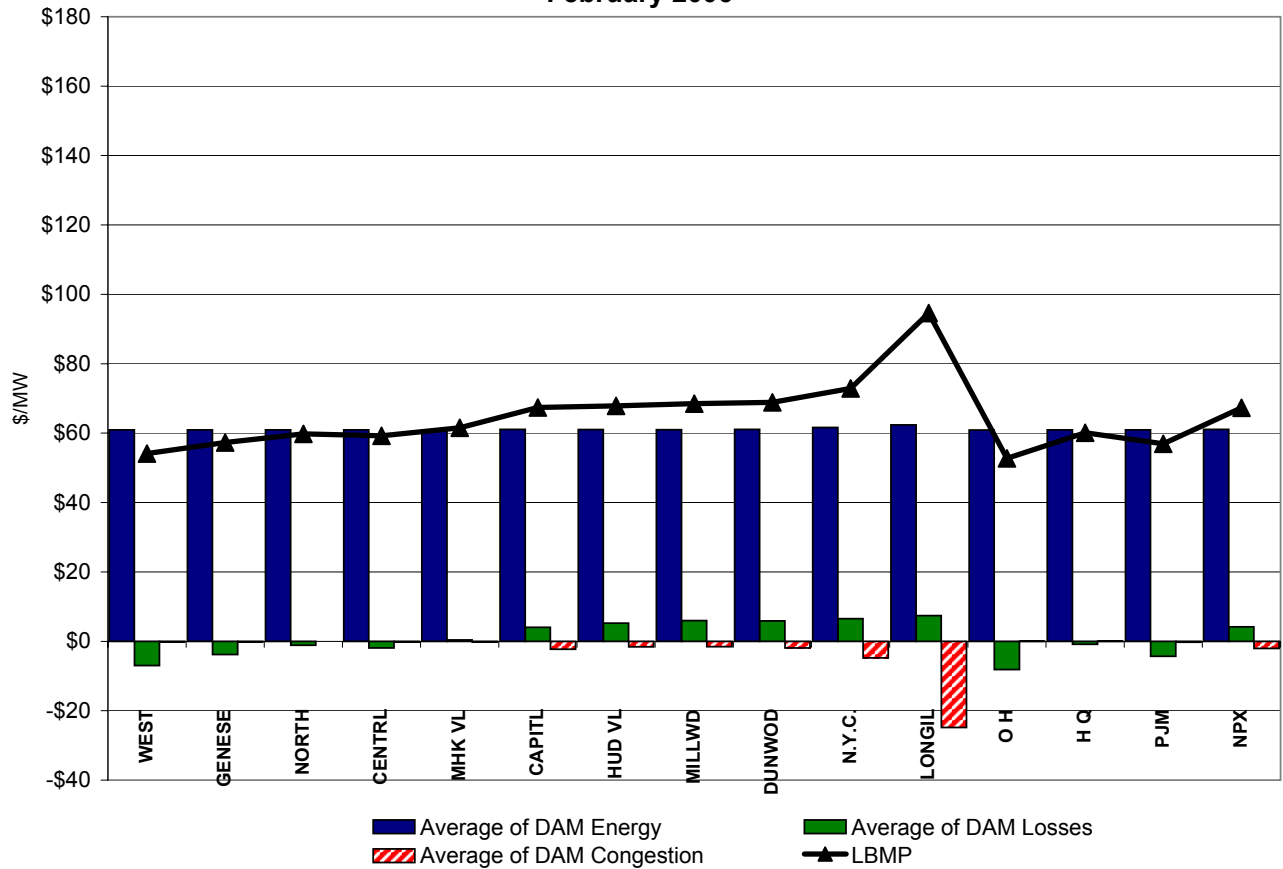
* Referred to as RTC beginning February 2005.
 Prior to February 2005 known as BME or Hour Ahead Market (HAM).

Long Island Zone K Monthly Average LBMP Prices 2005 - 2006

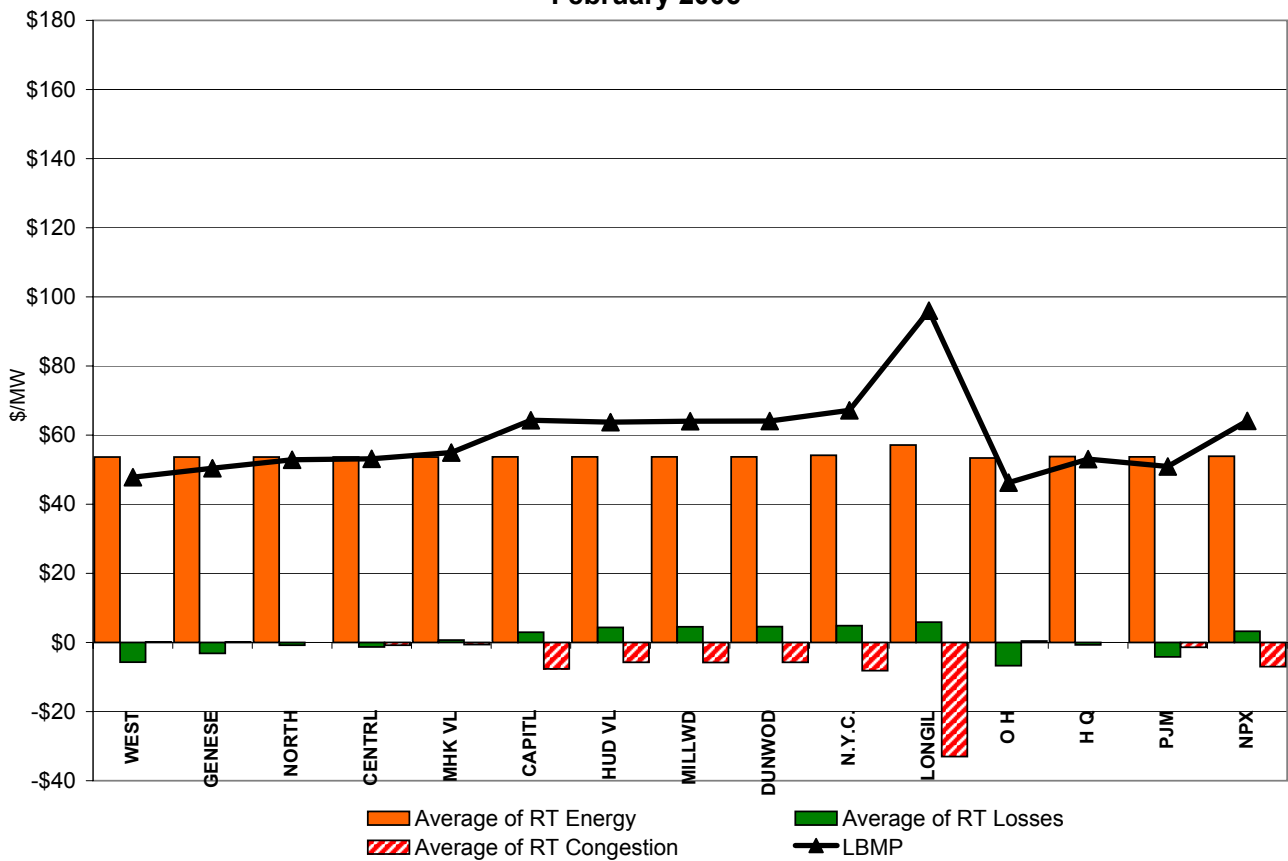


* Referred to as RTC beginning February 2005.
Prior to February 2005 known as BME or Hour Ahead Market (HAM).

**DAM Zonal Unweighted Monthly Average LBMP Components
February 2006**

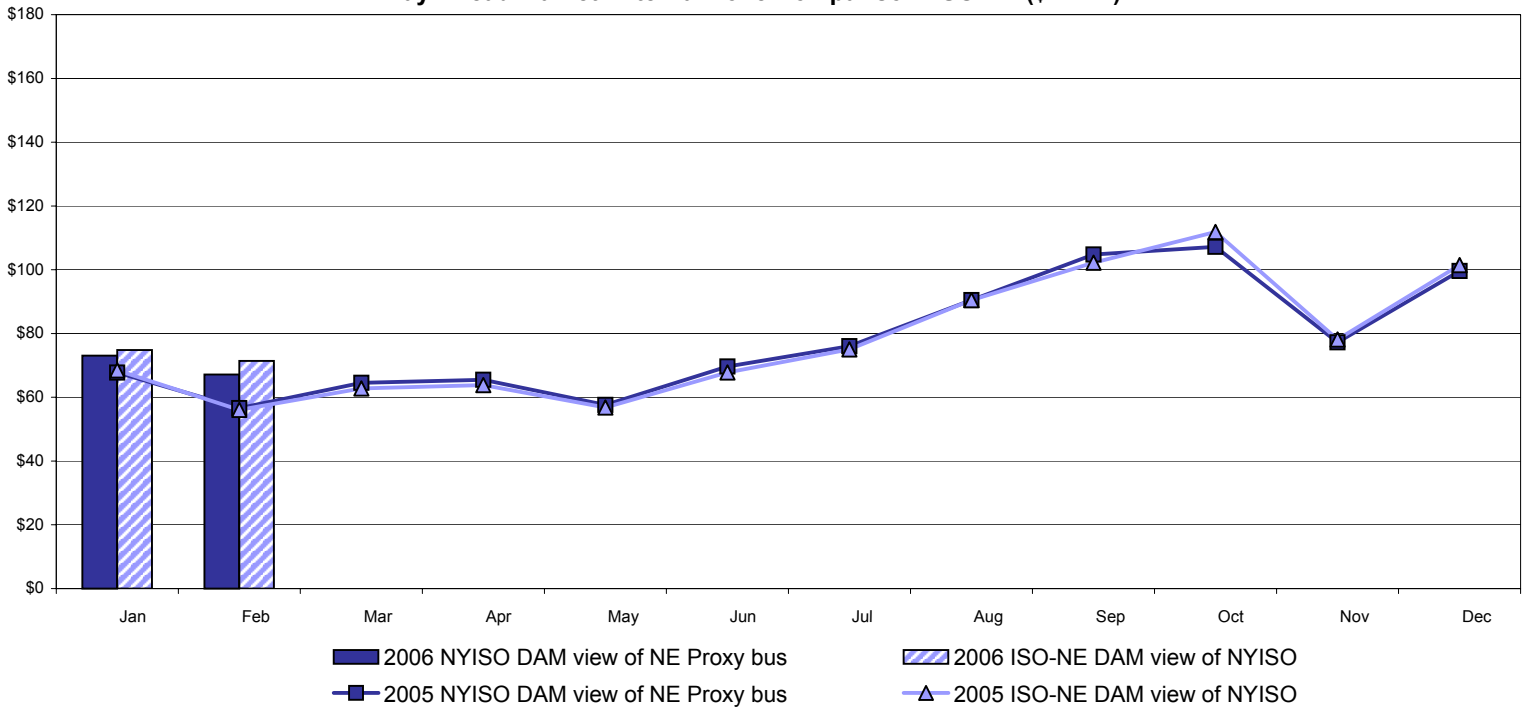


**RT Zonal Unweighted Monthly Average LBMP Components
February 2006**

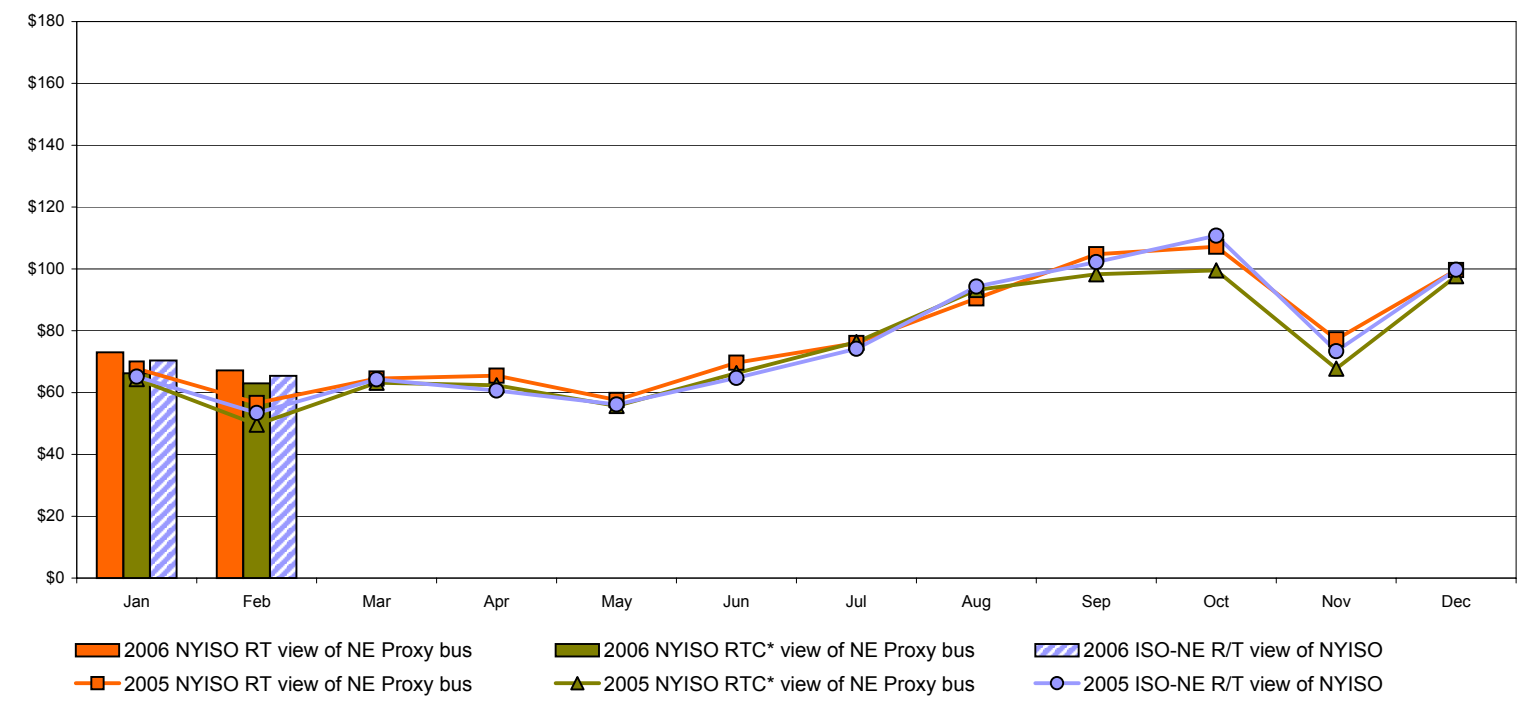


External Comparison ISO-New England

Day Ahead Market External Zone Comparison: ISO-NE (\$/MWh)



Real Time Market External Zone Comparison: ISO-NE (\$/MWh)

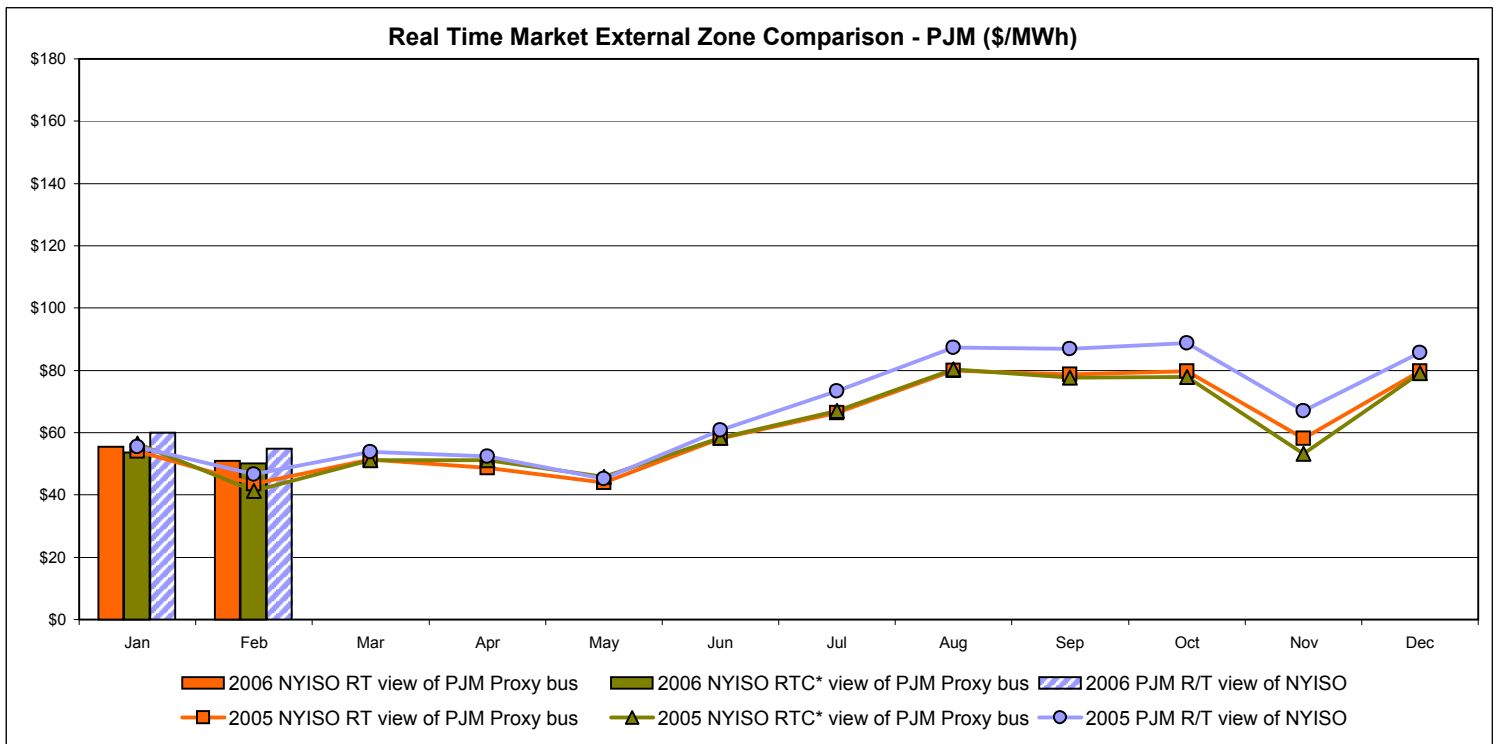
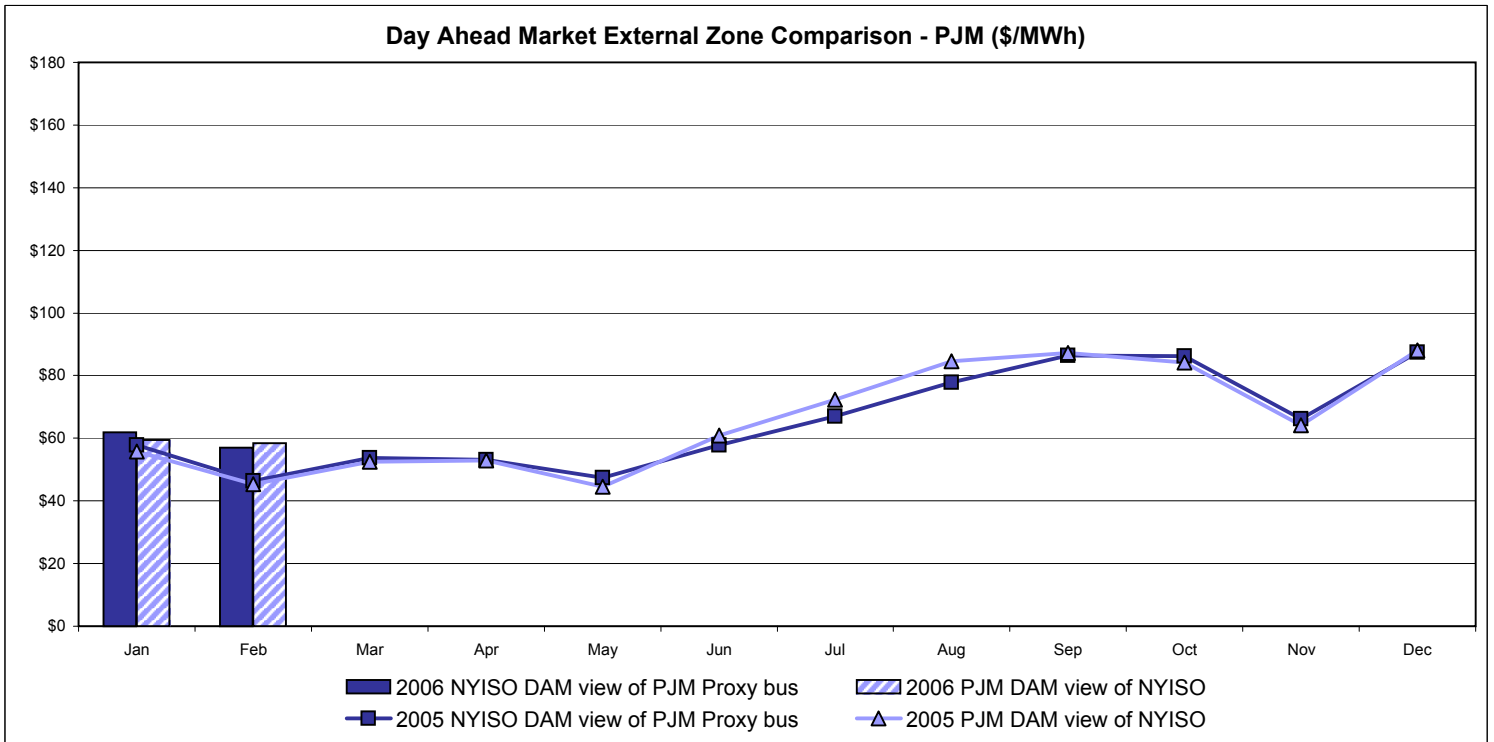


Note:

ISO-NE Forecast is an advisory posting @ 18:00 day before.
 The DAM and R/T prices at the Roseton interface are used for ISO-NE.
 The DAM and R/T prices at the SandyPond interface are used for NYISO.

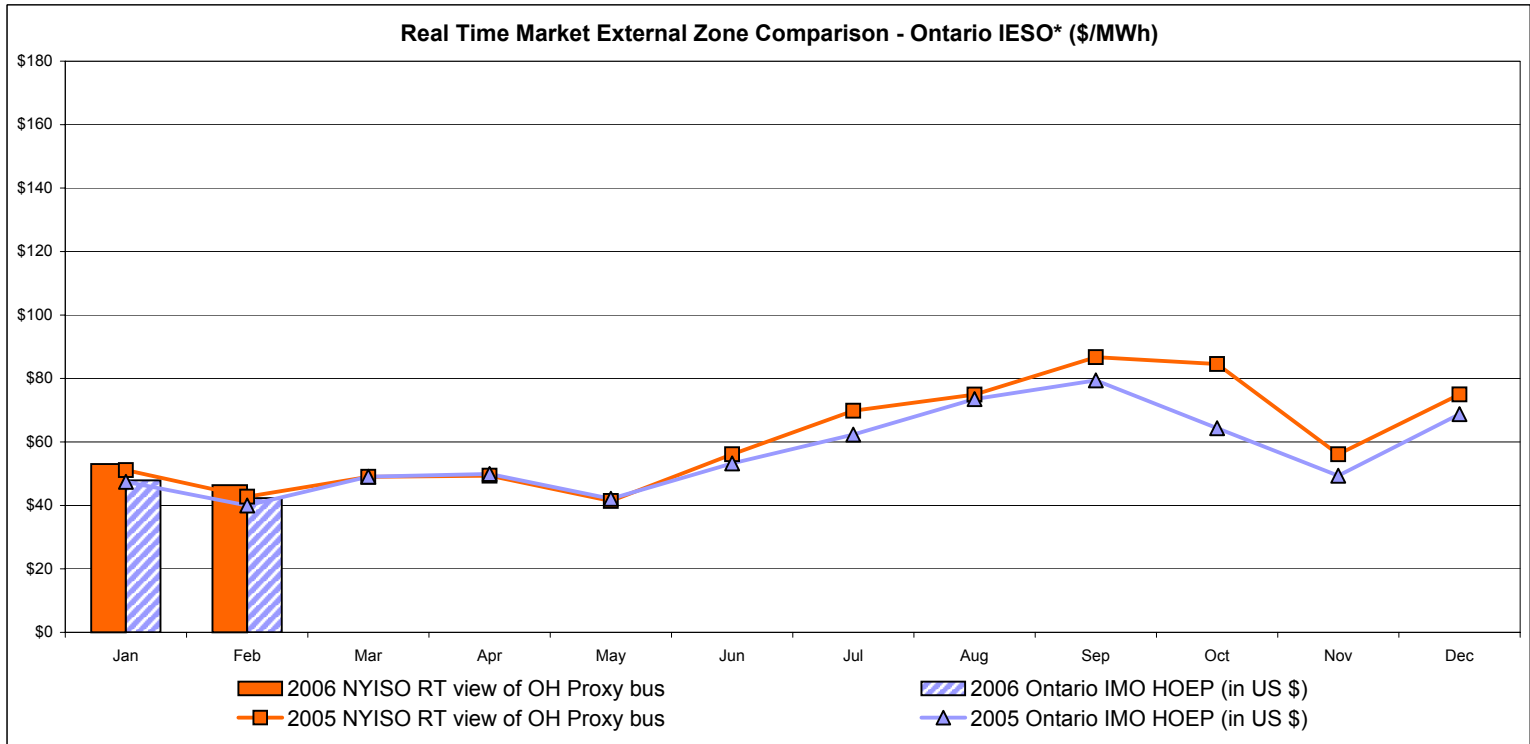
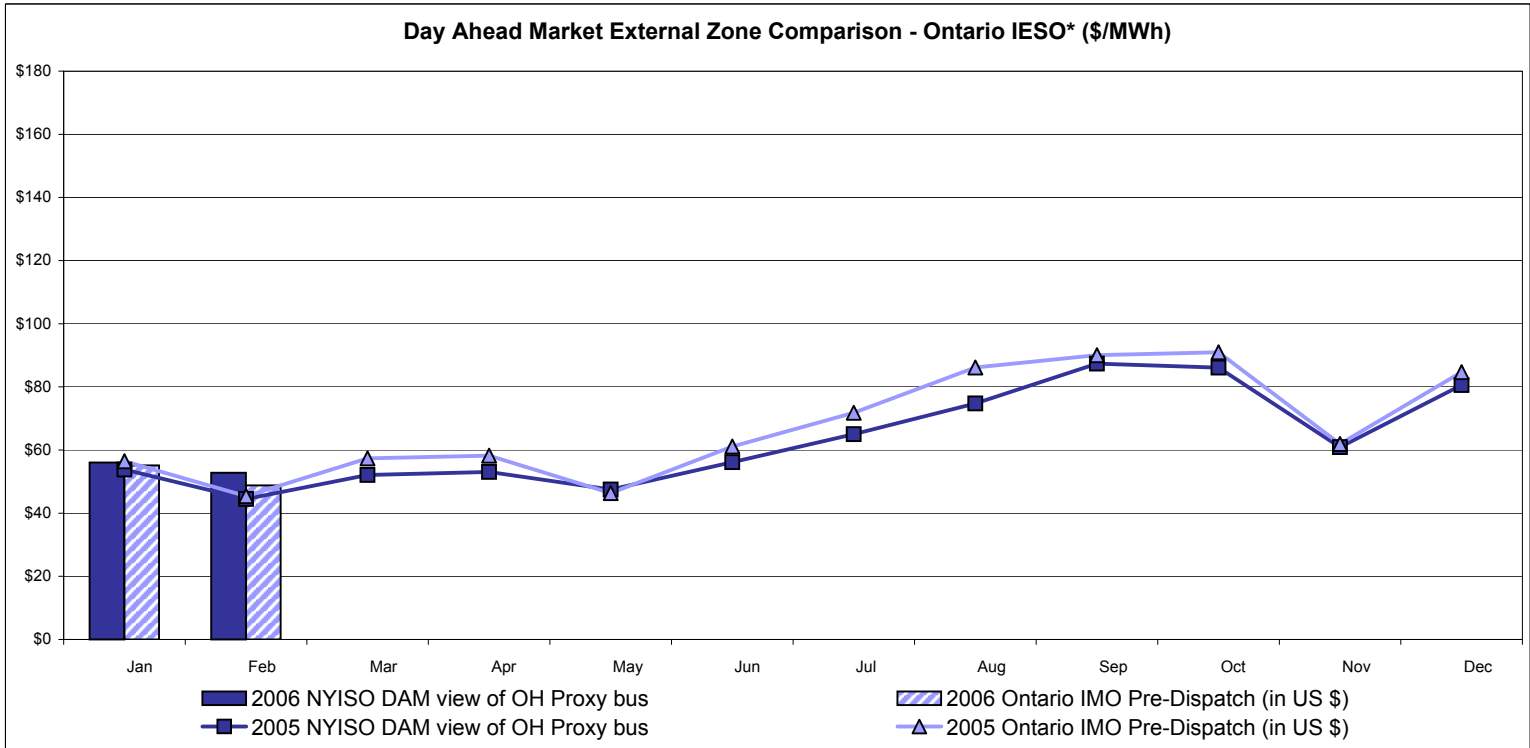
* Referred to as RTC beginning February 2005.
 Prior to February 2005 known as BME or Hour Ahead Market (HAM).

External Comparison PJM



* Referred to as RTC beginning February 2005.
 Prior to February 2005 known as BME or Hour Ahead Market (HAM).

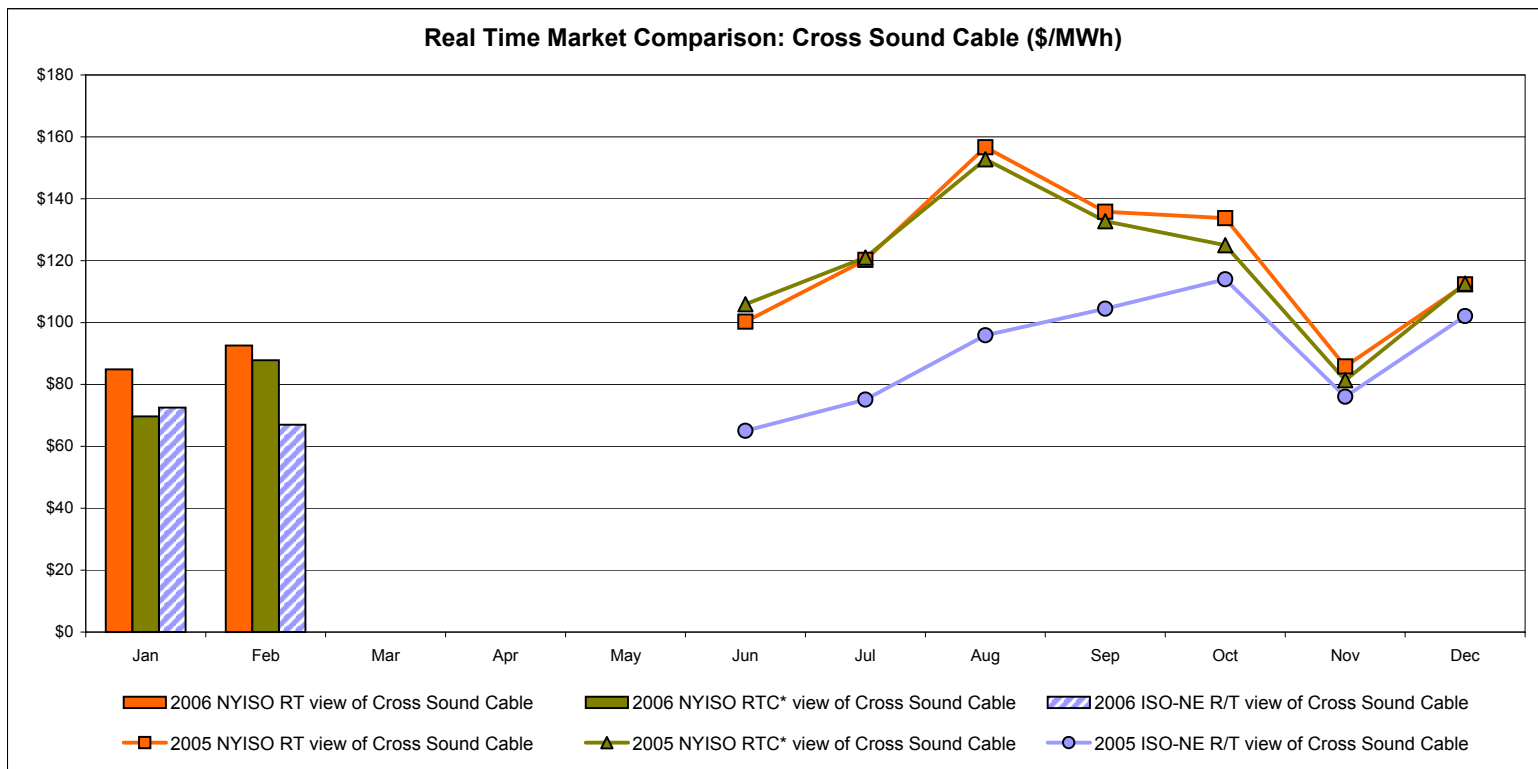
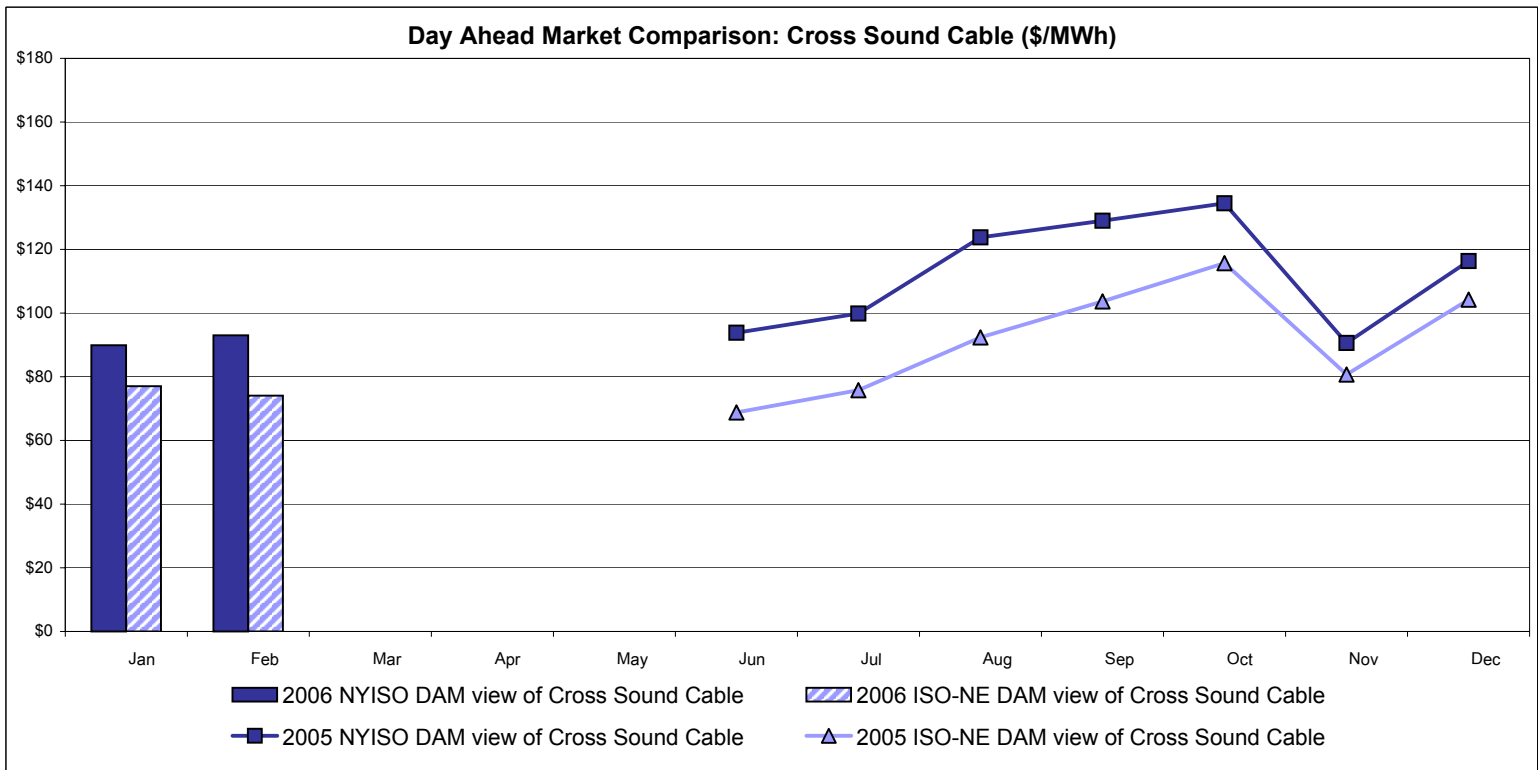
External Comparison Ontario IESO*



Notes: Exchange factor used for February 2006 was .87 to US \$
 HOEP: Hourly Ontario Energy Price
 Pre-Dispatch: Projected Energy Price

* Independent Electricity System Operator formerly known as the Independent Electricity Market Operator (IMO).

External Controllable Line: Cross Sound Cable (New England)



Note:

ISO-NE Forecast is an advisory posting @ 18:00 day before.
 The DAM and R/T prices at the Shorham138 99 interface are used for ISO-NE.
 The DAM and R/T prices at the CSC interface are used for NYISO.

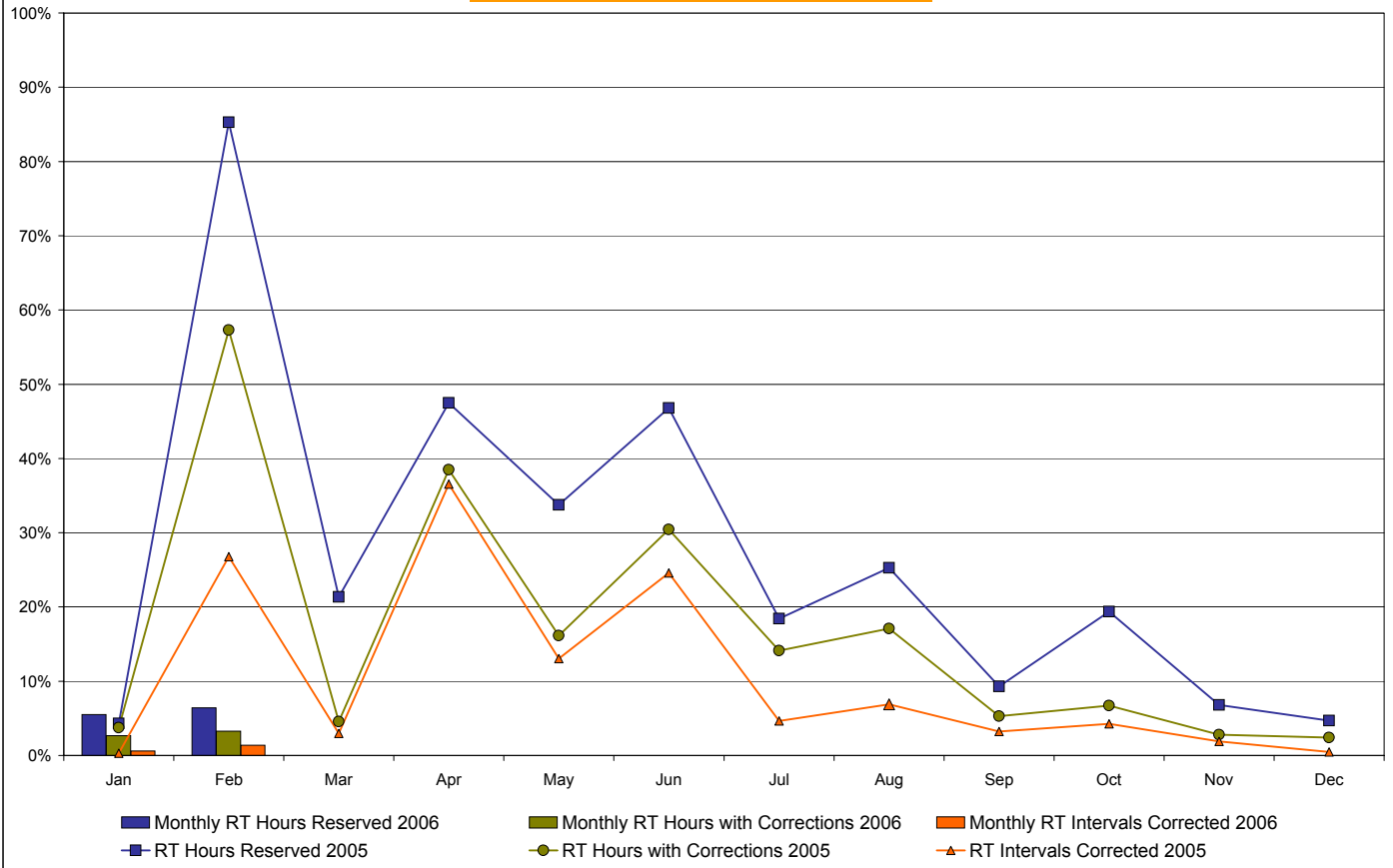
* Referred to as RTC beginning February 2005.
 Prior to February 2005 known as BME or Hour Ahead Market (HAM).

NYISO Real Time Price Correction Statistics

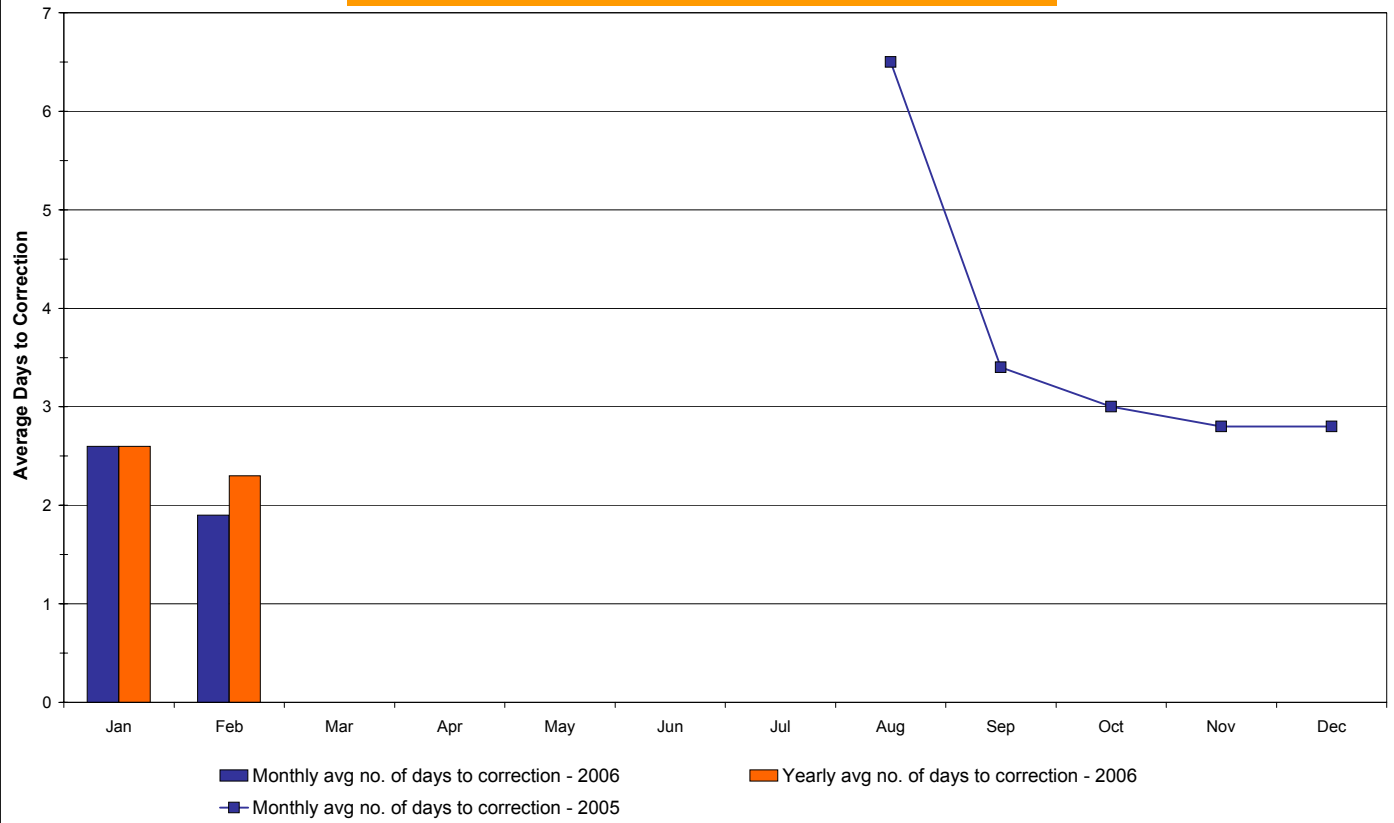
2006		<u>January</u>	<u>February</u>	<u>March</u>	<u>April</u>	<u>May</u>	<u>June</u>	<u>July</u>	<u>August</u>	<u>September</u>	<u>October</u>	<u>November</u>	<u>December</u>
Hour Corrections													
Number of hours with corrections	in the month	20	22										
Number of hours	in the month	744	672										
% of hours with corrections	in the month	2.69%	3.27%										
% of hours with corrections	year-to-date	2.69%	2.97%										
Interval Corrections													
Number of intervals corrected	in the month	54	112										
Number of intervals	in the month	9,004	8,129										
% of intervals corrected	in the month	0.60%	1.38%										
% of intervals corrected	year-to-date	0.60%	0.97%										
Hours Reserved													
Number of hours reserved	in the month	41	43										
Number of hours	in the month	744	672										
% of hours reserved	in the month	5.51%	6.40%										
% of hours reserved	year-to-date	5.51%	5.93%										
Days to Correction *													
Avg. number of days to correction	in the month	2.6	1.9										
Avg. number of days to correction	year-to-date	2.6	2.3										
Days Without Corrections													
Days without corrections	in the month	19	18										
Days without corrections	year-to-date	19	37										
2005		<u>January</u>	<u>February</u>	<u>March</u>	<u>April</u>	<u>May</u>	<u>June</u>	<u>July</u>	<u>August</u>	<u>September</u>	<u>October</u>	<u>November</u>	<u>December</u>
Hour Corrections													
Number of hours with corrections	in the month	28	385	34	277	120	219	105	127	38	50	20	18
Number of hours	in the month	744	672	744	720	744	720	744	744	720	744	720	744
% of hours with corrections	in the month	3.76%	57.29%	4.57%	38.47%	16.13%	30.42%	14.11%	17.07%	5.28%	6.72%	2.78%	2.42%
% of hours with corrections	year-to-date	3.76%	29.17%	20.69%	25.14%	23.29%	24.47%	22.96%	22.21%	20.34%	18.96%	17.50%	16.22%
Interval Corrections													
Number of intervals corrected	in the month	37	2,177	266	3,182	1,170	2,145	421	625	281	386	167	43
Number of intervals	in the month	11,811	8,131	8,961	8,711	8,972	8,729	9,024	9,065	8,741	9,029	8,721	9,115
% of intervals corrected	in the month	0.31%	26.77%	2.97%	36.53%	13.04%	24.57%	4.67%	6.89%	3.21%	4.28%	1.91%	0.47%
% of intervals corrected	year-to-date	0.31%	11.10%	8.58%	15.05%	14.67%	16.23%	14.61%	13.65%	12.54%	11.72%	10.87%	10.00%
Hours Reserved													
Number of hours reserved	in the month	32	573	159	342	251	337	137	188	67	144	49	35
Number of hours	in the month	744	672	744	720	744	720	744	744	720	744	720	744
% of hours reserved	in the month	4.30%	85.27%	21.37%	47.50%	33.74%	46.81%	18.41%	25.27%	9.31%	19.35%	6.81%	4.70%
% of hours reserved	year-to-date	4.30%	42.73%	35.37%	38.40%	37.44%	39.00%	35.99%	34.62%	31.84%	30.56%	28.43%	26.42%
Days to Correction *													
Avg. number of days to correction	in the month	-	-	-	-	-	-	-	6.5	3.4	3.0	2.8	2.8
Avg. number of days to correction	year-to-date	-	-	-	-	-	-	-	-	-	-	-	-
Days Without Corrections													
Days without corrections	in the month	12	4	16	3	4	4	6	6	17	17	22	19
Days without corrections	year-to-date	12	16	32	35	39	43	49	55	72	89	111	130

* Calendar days from reservation date. Data available from August 2005.

Percentage of Real-Time Corrections

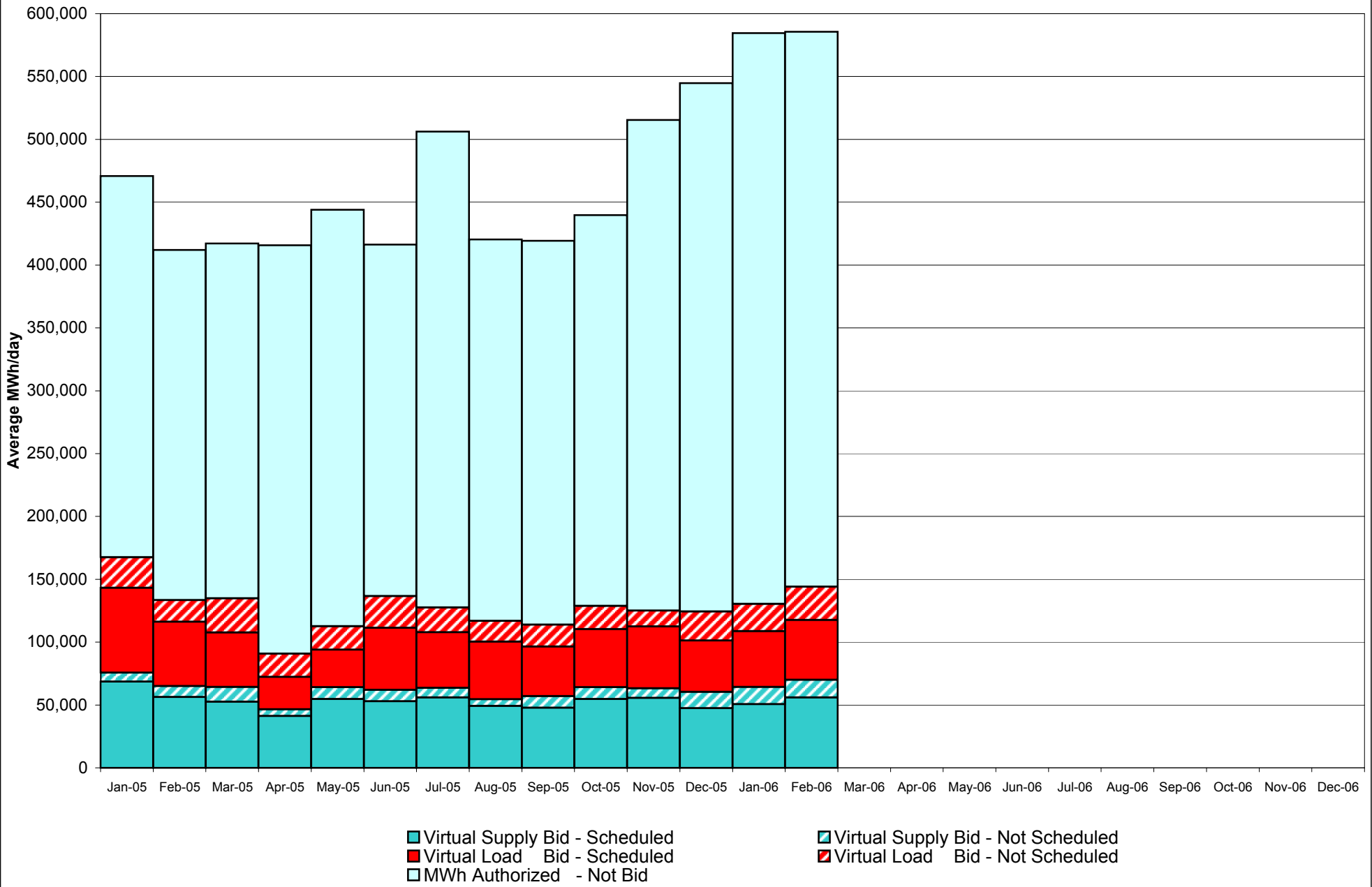


Annual average time period for making Price Corrections (from reservation date) *

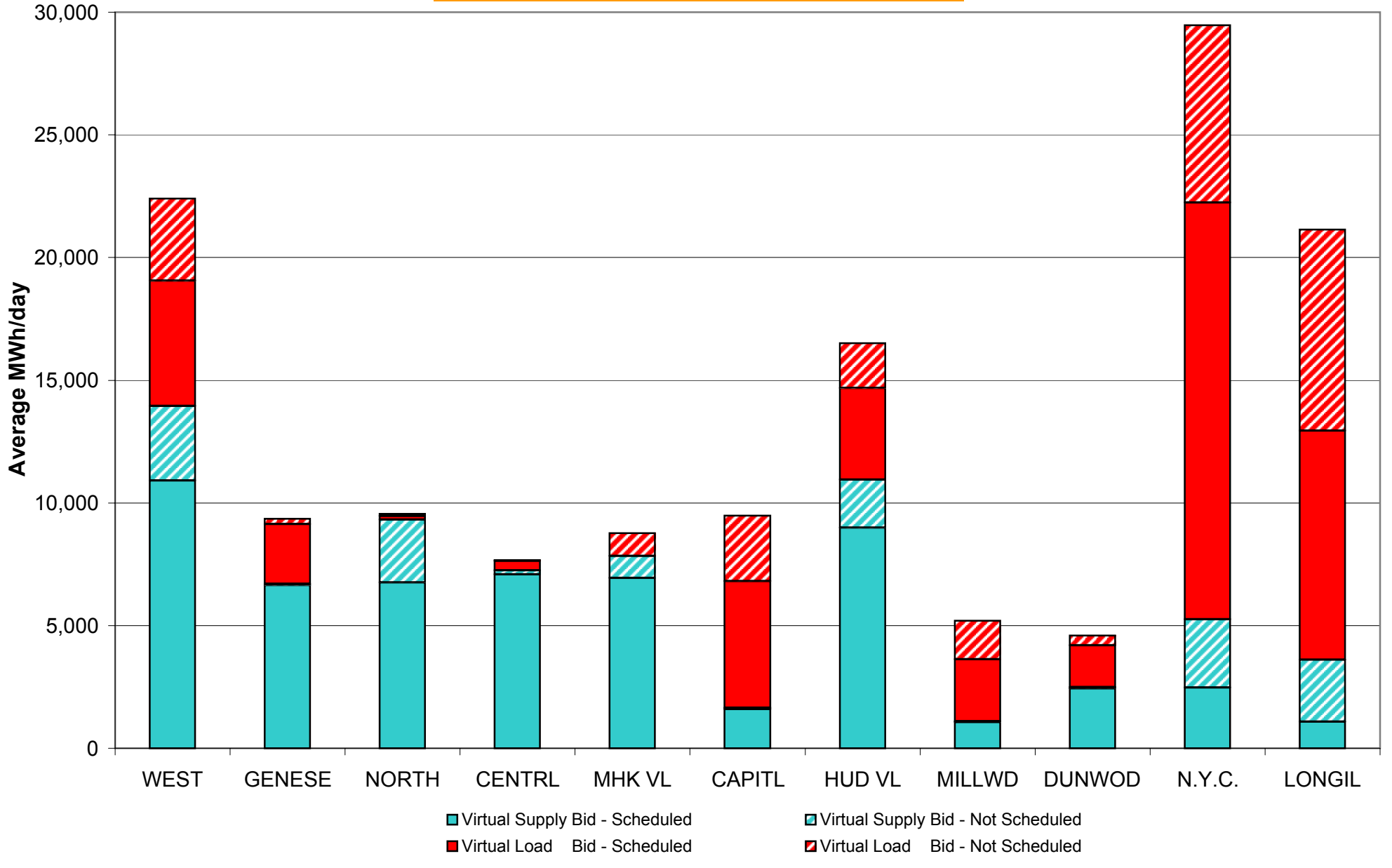


* Calendar days from reservation date. Data available from August 2005.

**NYISO Virtual Trading
Average MWh per day**



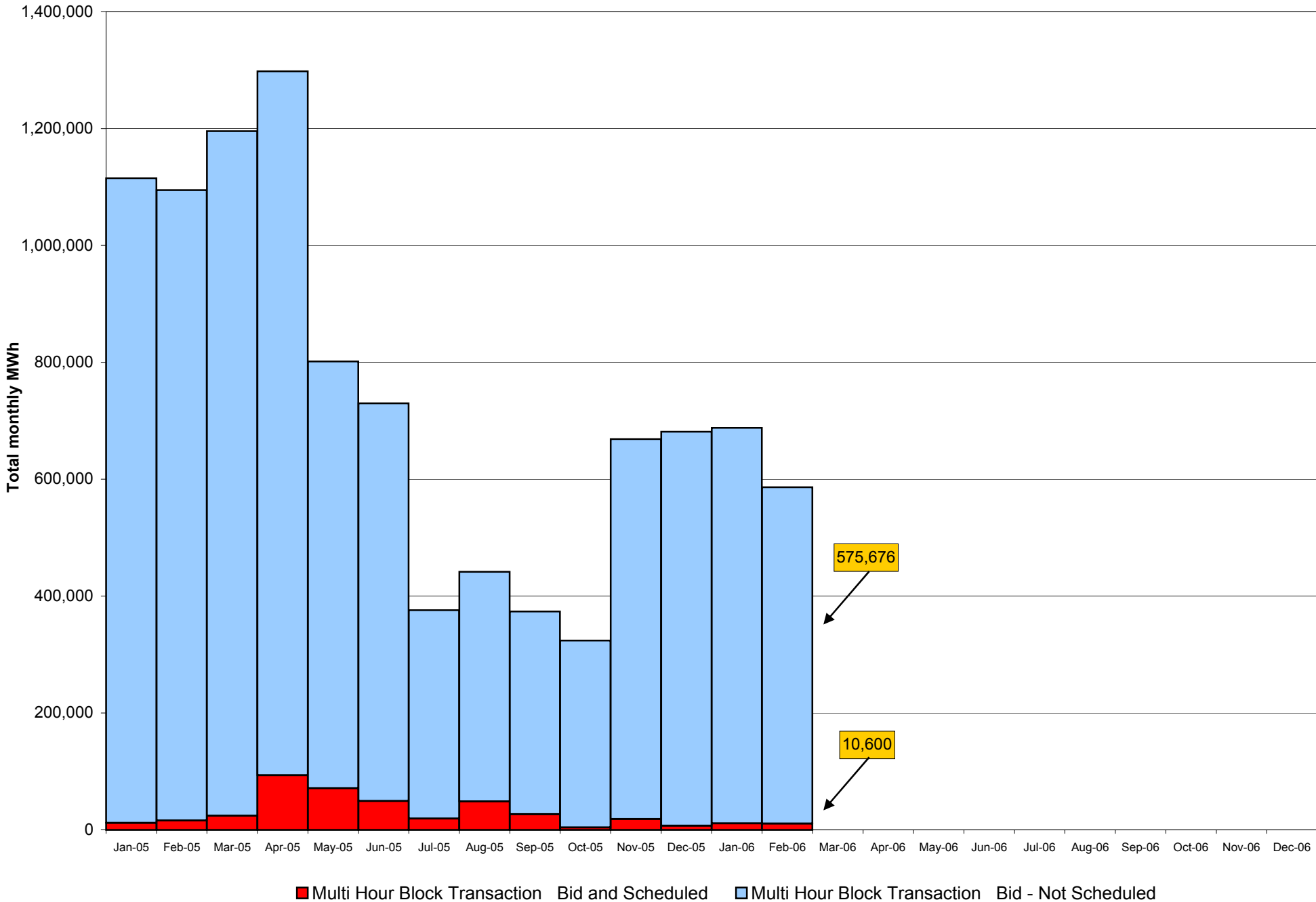
Virtual Load and Supply Zonal Statistics February 2006



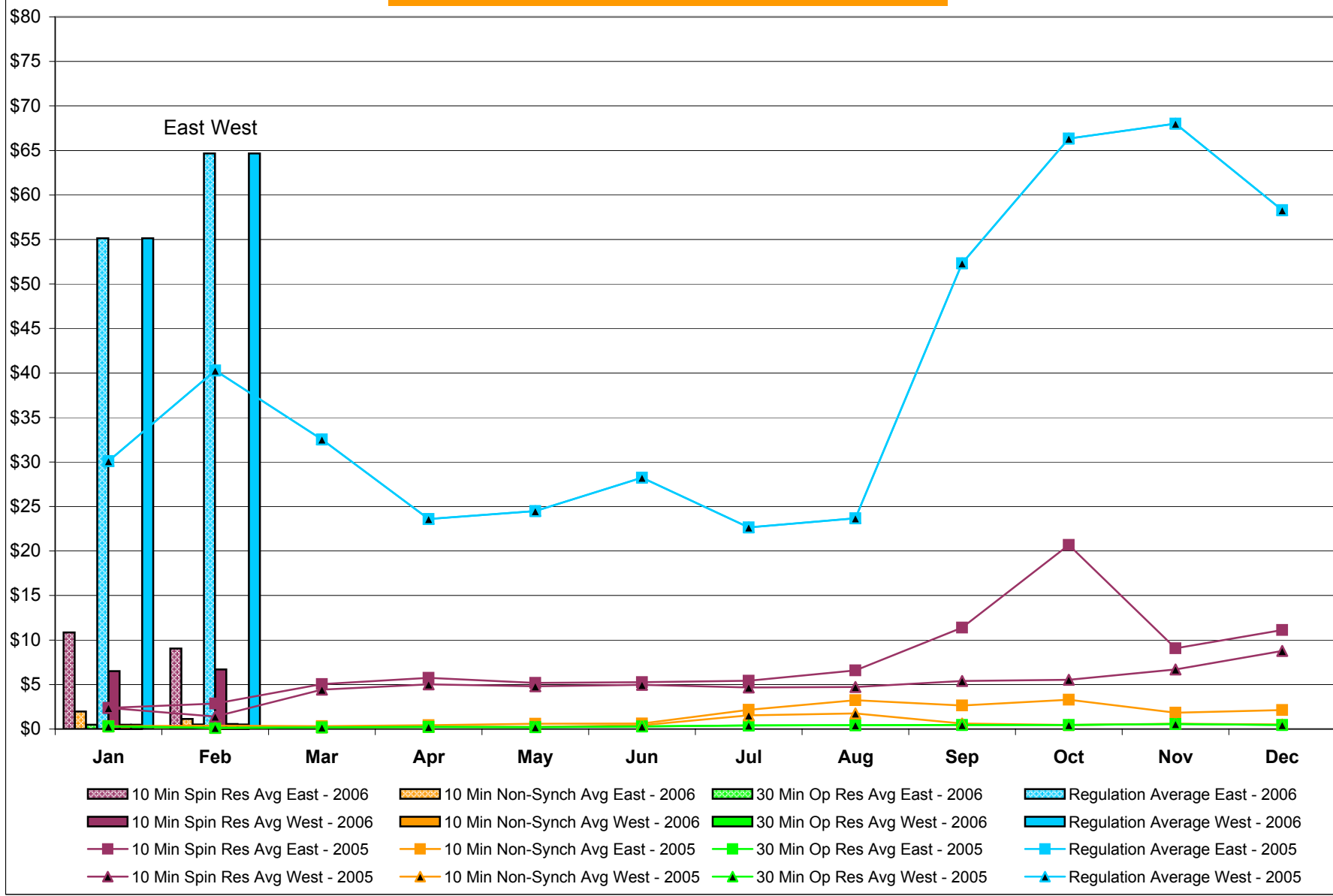
Virtual Load and Supply Zonal Statistics (Average MWh/day) - 2006

		Virtual Load Bid		Virtual Supply Bid				Virtual Load Bid		Virtual Supply Bid				Virtual Load Bid		Virtual Supply Bid			
Zone	Date	Scheduled	Not Scheduled	Scheduled	Not Scheduled	Zone	Date	Scheduled	Not Scheduled	Scheduled	Not Scheduled	Zone	Date	Scheduled	Not Scheduled	Scheduled	Not Scheduled		
WEST	Jan-06	5,890	2,304	11,610	3,141	MHK VL	Jan-06	46	902	5,884	1,636	DUNWOD	Jan-06	745	644	3,267	26		
	Feb-06	5,103	3,356	10,907	3,042		Feb-06	17	930	6,935	891		Feb-06	1,714	399	2,441	42		
	Mar-06						Mar-06						Mar-06						
	Apr-06						Apr-06						Apr-06						
	May-06						May-06						May-06						
	Jun-06						Jun-06						Jun-06						
	Jul-06						Jul-06						Jul-06						
	Aug-06						Aug-06						Aug-06						
	Sep-06						Sep-06						Sep-06						
	Oct-06						Oct-06						Oct-06						
	Nov-06						Nov-06						Nov-06						
	Dec-06						Dec-06						Dec-06						
GENESE	Jan-06	1,831	708	6,806	73	CAPITL	Jan-06	3,624	1,646	1,192	48	N.Y.C.	Jan-06	19,500	4,668	1,330	3,334		
	Feb-06	2,434	208	6,652	55		Feb-06	5,155	2,682	1,584	65		Feb-06	16,986	7,228	2,463	2,793		
	Mar-06						Mar-06						Mar-06						
	Apr-06						Apr-06						Apr-06						
	May-06						May-06						May-06						
	Jun-06						Jun-06						Jun-06						
	Jul-06						Jul-06						Jul-06						
	Aug-06						Aug-06						Aug-06						
	Sep-06						Sep-06						Sep-06						
	Oct-06						Oct-06						Oct-06						
	Nov-06						Nov-06						Nov-06						
	Dec-06						Dec-06						Dec-06						
NORTH	Jan-06	262	22	5,961	1,658	HUD VL	Jan-06	2,086	2,026	8,595	1,717	LONGIL	Jan-06	8,207	6,064	1,091	1,891		
	Feb-06	139	101	6,749	2,570		Feb-06	3,722	1,834	8,989	1,964		Feb-06	9,345	8,197	1,088	2,511		
	Mar-06						Mar-06						Mar-06						
	Apr-06						Apr-06						Apr-06						
	May-06						May-06						May-06						
	Jun-06						Jun-06						Jun-06						
	Jul-06						Jul-06						Jul-06						
	Aug-06						Aug-06						Aug-06						
	Sep-06						Sep-06						Sep-06						
	Oct-06						Oct-06						Oct-06						
	Nov-06						Nov-06						Nov-06						
	Dec-06						Dec-06						Dec-06						
CENTRL	Jan-06	713	28	3,870	103	MILLWD	Jan-06	1,531	2,596	1,065	11	NYISO	Jan-06	44,436	21,609	50,671	13,639		
	Feb-06	395	27	7,081	165		Feb-06	2,540	1,560	1,067	24		Feb-06	47,550	26,523	55,956	14,122		
	Mar-06						Mar-06						Mar-06						
	Apr-06						Apr-06						Apr-06						
	May-06						May-06						May-06						
	Jun-06						Jun-06						Jun-06						
	Jul-06						Jul-06						Jul-06						
	Aug-06						Aug-06						Aug-06						
	Sep-06						Sep-06						Sep-06						
	Oct-06						Oct-06						Oct-06						
	Nov-06						Nov-06						Nov-06						
	Dec-06						Dec-06						Dec-06						

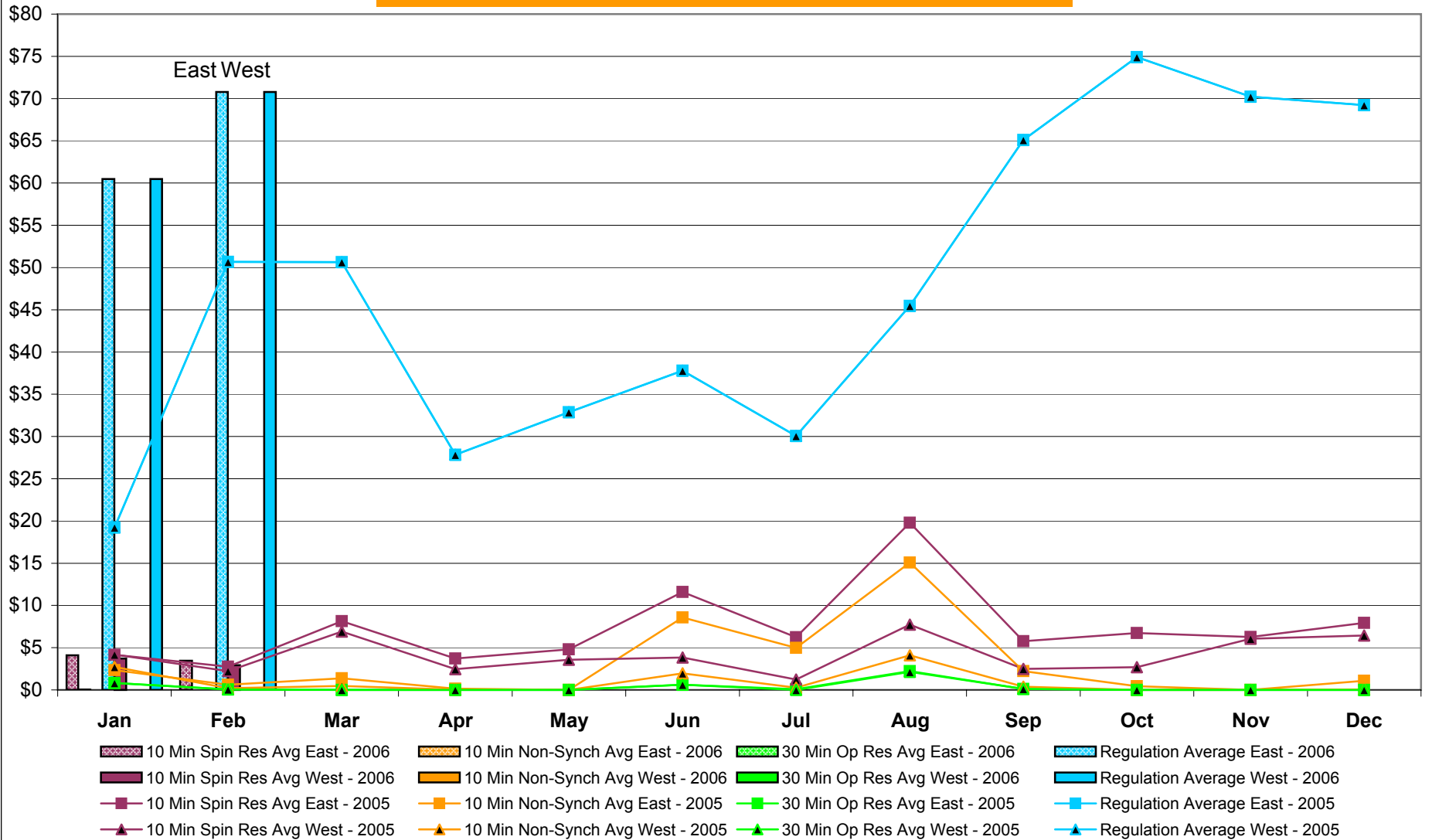
NYISO Multi Hour Block Transactions Monthly Total MWh



NYISO Monthly Average Ancillary Service Prices Day Ahead Market 2005 - 2006

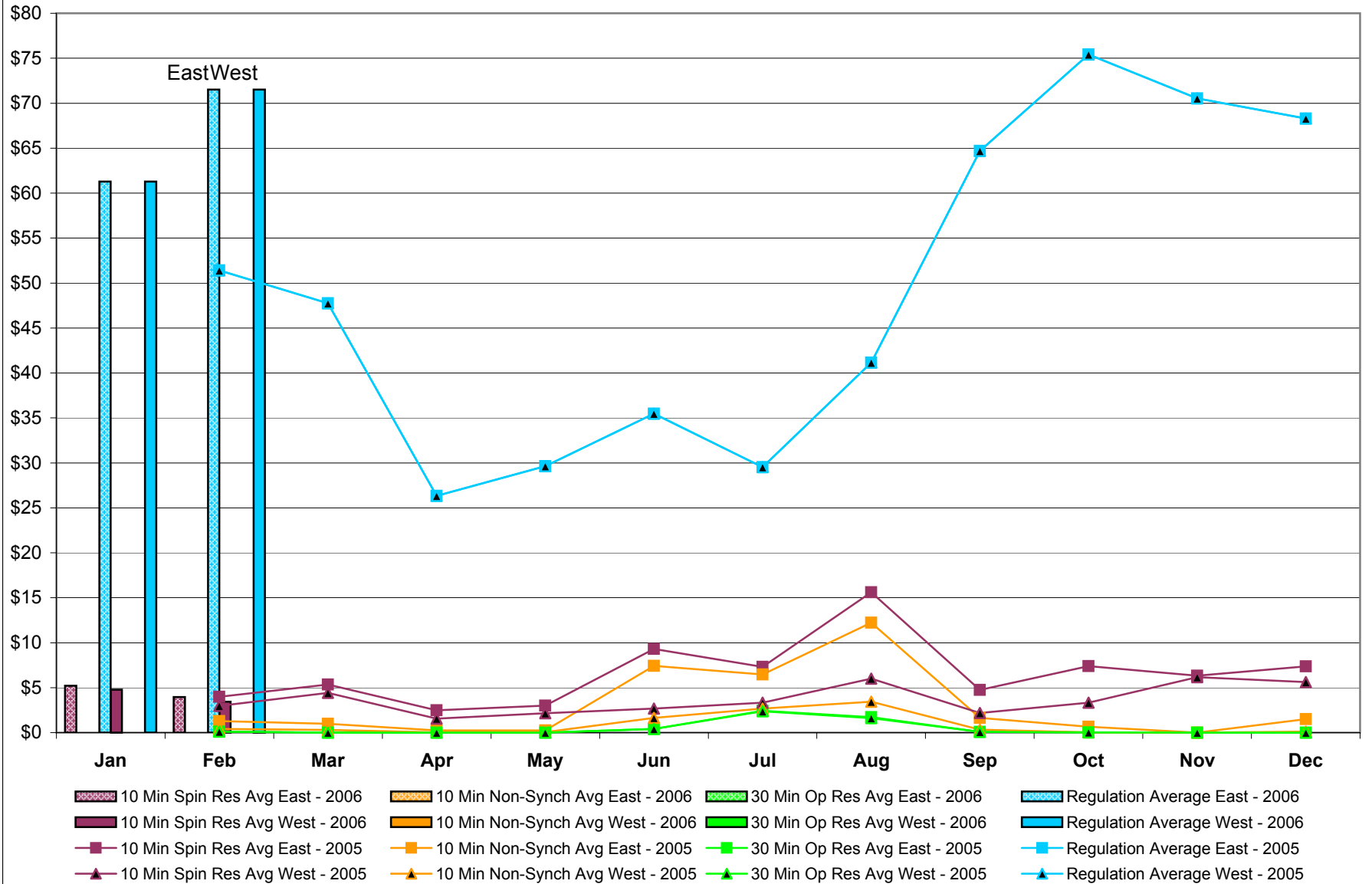


NYISO Monthly Average Ancillary Service Prices RTC* Market 2005 - 2006



* Referred to as RTC beginning February 2005
Prior to February 2005 known as BME or Hour Ahead Market (HAM)

NYISO Monthly Average Ancillary Service Prices Real Time Market* 2005 - 2006



* The Real Time Ancillary Market began in February 2005

NYISO Markets Ancillary Services Statistics - Unweighted Price (\$/MWH)

2006	<u>January</u>	<u>February</u>	<u>March</u>	<u>April</u>	<u>May</u>	<u>June</u>	<u>July</u>	<u>August</u>	<u>September</u>	<u>October</u>	<u>November</u>	<u>December</u>
<u>Day Ahead Market</u>												
10 Min Spin East	10.86	9.06										
10 Min Spin West	6.50	6.70										
10 Min Non Synch East	1.97	1.15										
10 Min Non Synch West	0.50	0.56										
30 Min East	0.48	0.52										
30 Min West	0.48	0.52										
Regulation East	55.13	64.65										
Regulation West	55.13	64.65										
<u>RTC* Market</u>												
10 Min Spin East	4.10	3.44										
10 Min Spin West	3.71	2.93										
10 Min Non Synch East	0.02	0.01										
10 Min Non Synch West	0.00	0.00										
30 Min East	0.00	0.00										
30 Min West	0.00	0.00										
Regulation East	60.46	70.79										
Regulation West	60.46	70.79										
<u>Real Time Market**</u>												
10 Min Spin East	5.20	3.96										
10 Min Spin West	4.78	3.43										
10 Min Non Synch East	0.01	0.00										
10 Min Non Synch West	0.00	0.00										
30 Min East	0.00	0.00										
30 Min West	0.00	0.00										
Regulation East	61.28	71.52										
Regulation West	61.28	71.52										
2005	<u>January</u>	<u>February</u>	<u>March</u>	<u>April</u>	<u>May</u>	<u>June</u>	<u>July</u>	<u>August</u>	<u>September</u>	<u>October</u>	<u>November</u>	<u>December</u>
<u>Day Ahead Market</u>												
10 Min Spin East	2.38	2.87	5.06	5.76	5.19	5.26	5.44	6.59	11.38	20.70	9.08	11.12
10 Min Spin West	2.37	1.39	4.43	5.03	4.80	4.96	4.68	4.73	5.41	5.54	6.68	8.77
10 Min Non Synch East	0.31	0.37	0.31	0.44	0.60	0.61	2.16	3.25	2.65	3.31	1.82	2.14
10 Min Non Synch West	0.31	0.13	0.20	0.24	0.23	0.43	1.54	1.75	0.63	0.47	0.59	0.52
30 Min East	0.31	0.13	0.19	0.24	0.22	0.29	0.41	0.44	0.47	0.46	0.57	0.47
30 Min West	0.31	0.13	0.19	0.24	0.22	0.29	0.41	0.44	0.47	0.46	0.57	0.47
Regulation East	30.10	40.28	32.53	23.61	24.49	28.23	22.66	23.67	52.33	66.33	68.02	58.28
Regulation West	30.10	40.28	32.53	23.61	24.49	28.23	22.66	23.67	52.33	66.33	68.02	58.28
<u>RTC* Market</u>												
10 Min Spin East	4.15	2.75	8.13	3.71	4.80	11.61	6.23	19.80	5.75	6.72	6.25	7.94
10 Min Spin West	4.20	2.23	6.90	2.46	3.58	3.84	1.24	7.72	2.50	2.69	6.06	6.45
10 Min Non Synch East	2.35	0.62	1.38	0.14	0.00	8.58	4.96	15.08	2.22	0.44	0.01	1.07
10 Min Non Synch West	2.72	0.21	0.47	0.03	0.00	1.96	0.25	4.09	0.37	0.00	0.00	0.06
30 Min East	0.83	0.05	0.00	0.00	0.00	0.62	0.08	2.22	0.12	0.00	0.00	0.00
30 Min West	0.83	0.05	0.00	0.00	0.00	0.61	0.00	2.15	0.12	0.00	0.00	0.00
Regulation East	19.23	50.66	50.65	27.85	32.87	37.80	30.07	45.47	65.10	74.90	70.23	69.23
Regulation West	19.23	50.66	50.65	27.85	32.87	37.80	30.07	45.47	65.10	74.90	70.23	69.23
<u>Real Time Market**</u>												
10 Min Spin East	-	3.99	5.34	2.47	3.00	9.30	7.30	15.60	4.75	7.40	6.32	7.36
10 Min Spin West	-	2.97	4.42	1.56	2.16	2.69	3.33	5.99	2.19	3.34	6.16	5.62
10 Min Non Synch East	-	1.27	0.98	0.25	0.24	7.43	6.46	12.22	1.63	0.65	0.00	1.49
10 Min Non Synch West	-	0.41	0.29	0.02	0.07	1.63	2.68	3.44	0.33	0.01	0.00	0.12
30 Min East	-	0.12	0.00	0.00	0.00	0.40	2.43	1.71	0.09	0.01	0.00	0.00
30 Min West	-	0.11	0.00	0.00	0.00	0.40	2.36	1.61	0.09	0.01	0.00	0.00
Regulation East	-	51.41	47.74	26.33	29.62	35.47	29.52	41.14	64.70	75.41	70.52	68.30
Regulation West	-	51.41	47.74	26.33	29.62	35.47	29.52	41.13	64.70	75.41	70.52	68.30

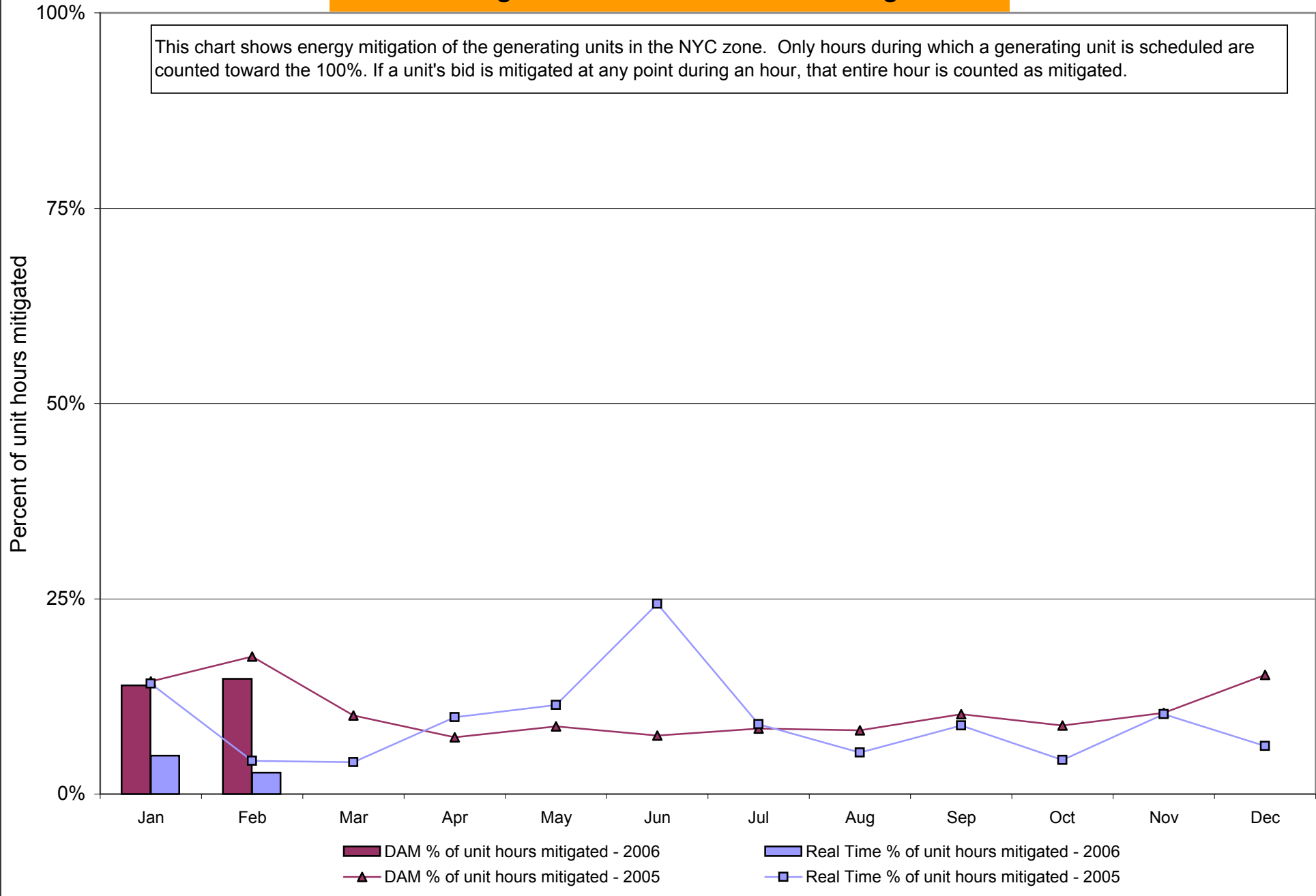
* Referred to as RTC beginning February 2005. Prior to February 2005 known as BME or Hour Ahead Market (HAM).

** The Real Time Ancillary Market began in February 2005.

NYISO In City Energy Mitigation (NYC Zone) 2005-2006

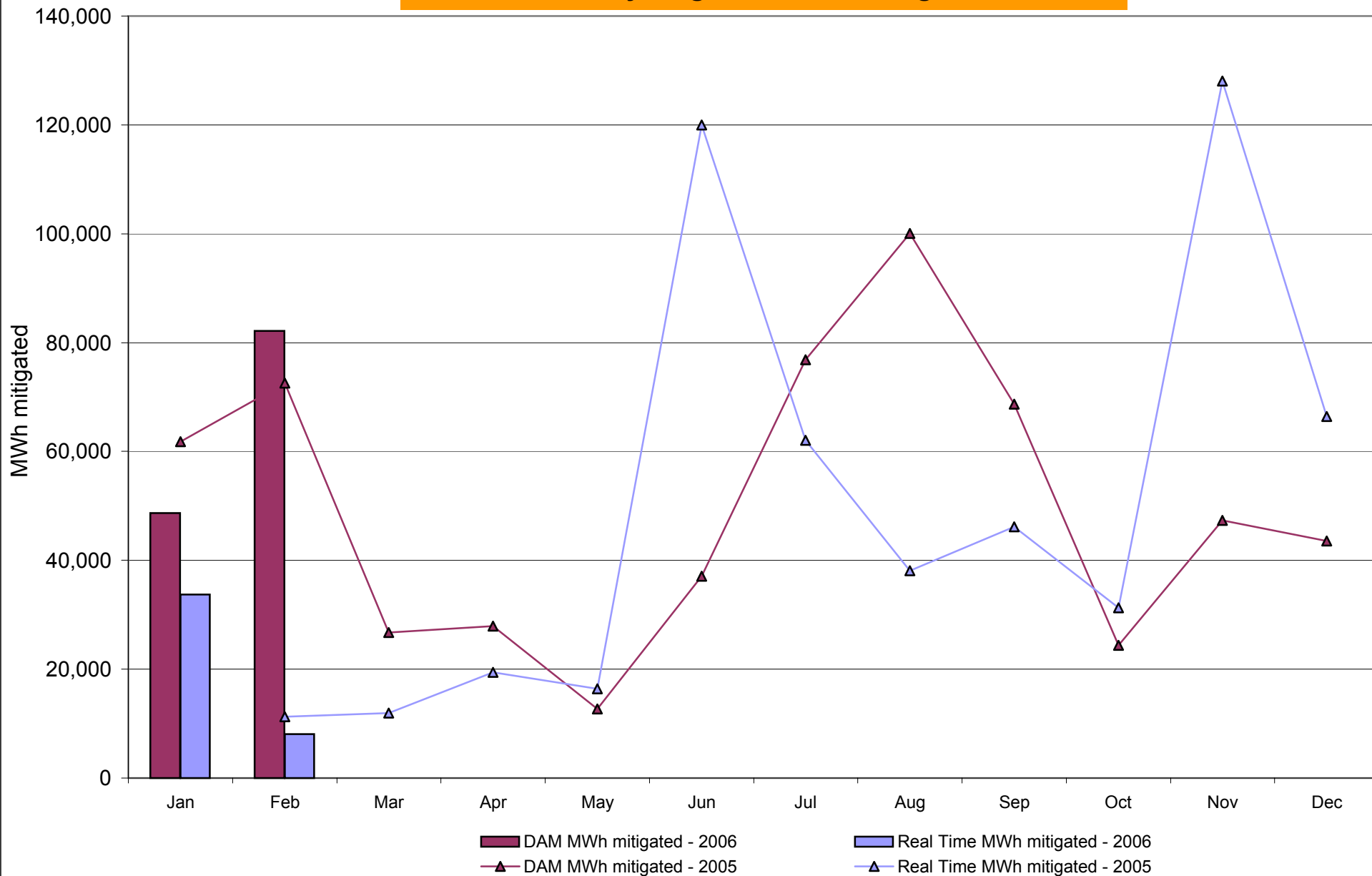
Percentage of committed unit-hours mitigated

This chart shows energy mitigation of the generating units in the NYC zone. Only hours during which a generating unit is scheduled are counted toward the 100%. If a unit's bid is mitigated at any point during an hour, that entire hour is counted as mitigated.



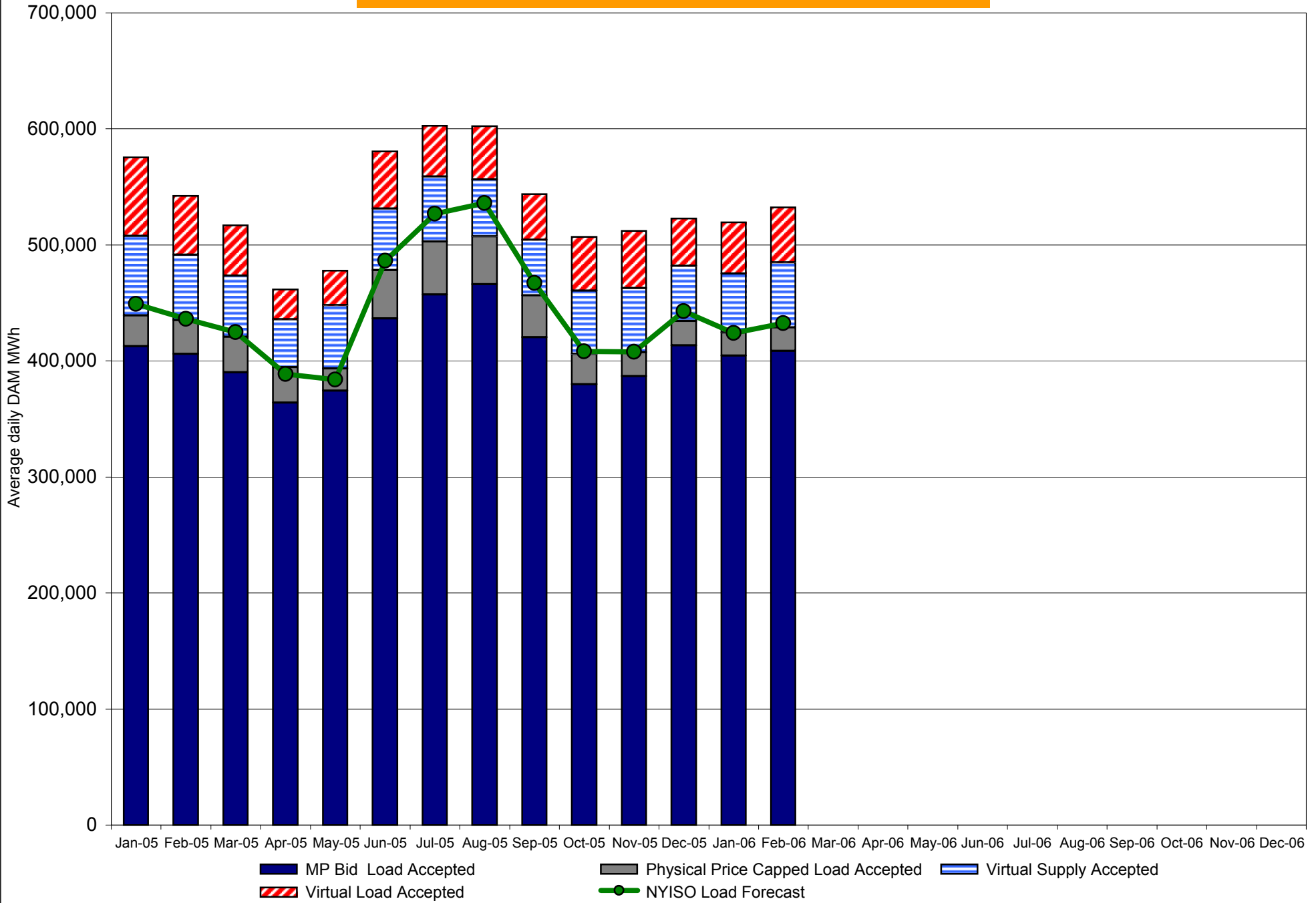
NYISO In City Energy Mitigation (NYC Zone) 2005-2006

Monthly megawatt hours mitigated

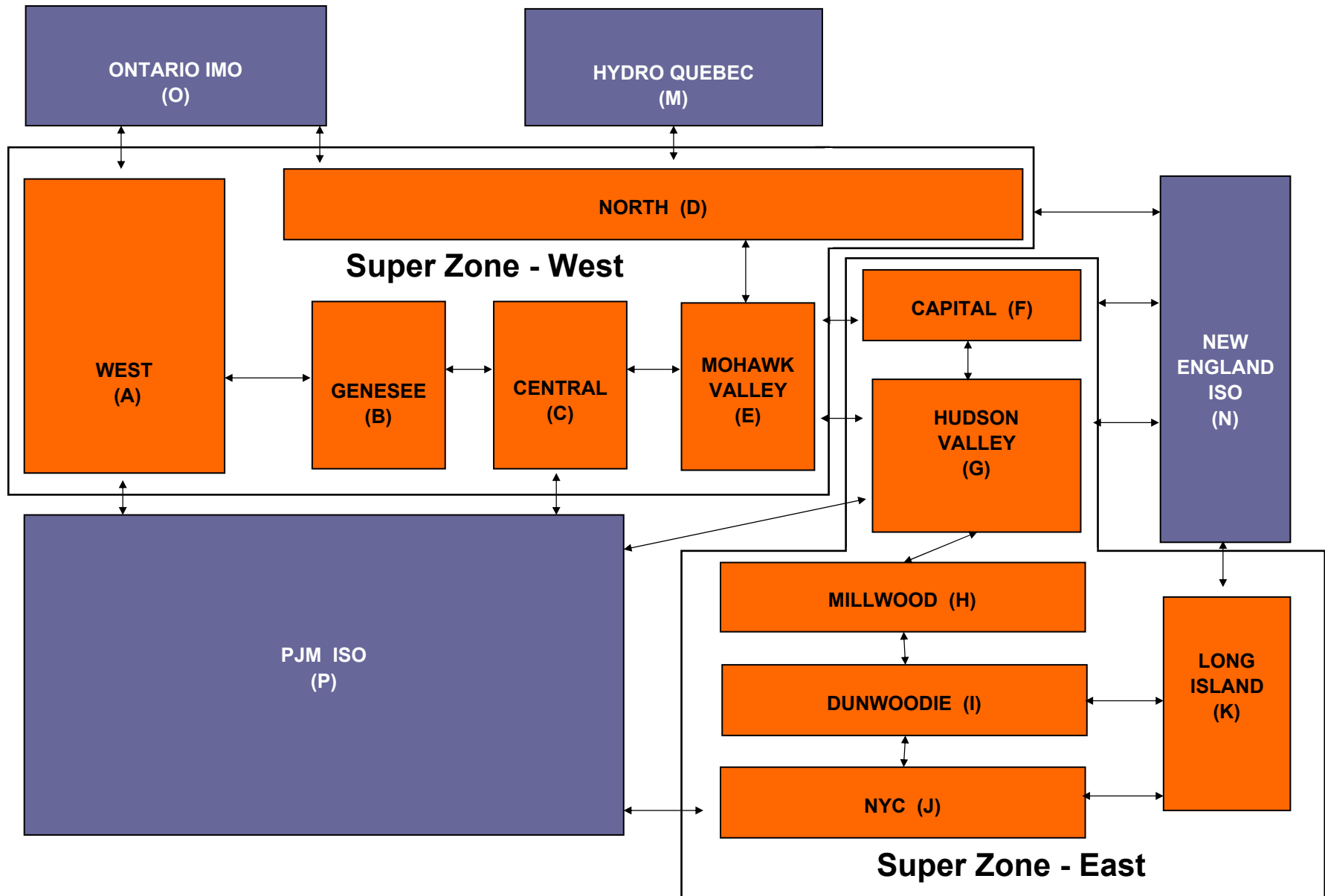


RT mitigation data available with SMD2 deployment in February 2005.

NYISO Average Daily DAM Load Bid Summary



NYISO LBMP ZONES



Billing Codes for Chart 4-C

Chart 4-C Category Name	Billing Code	Billing Category Name
Bid Production Cost Guarantee Balancing	81203	Balancing NYISO Bid Production Cost Guarantee - Internal Units
Bid Production Cost Guarantee Balancing	81204	Balancing NYISO Bid Production Cost Guarantee - External Units
Bid Production Cost Guarantee Balancing	81205	Balancing NYISO Bid Production Cost Guarantee Expenditure due to Curtailed Imports
Bid Production Cost Guarantee Balancing	81208	Balancing NYISO Bid Production Cost Guarantee - Internal Units
Bid Production Cost Guarantee Balancing	81209	Balancing NYISO Bid Production Cost Guarantee - External Units
Bid Production Cost Guarantee Balancing	81213	Balancing NYISO Bid Production Cost Guarantee Expenditure due to Curtailed Imports
Bid Production Cost Guarantee DAM	81201	DAM NYISO Bid Production Cost Guarantee - Internal Units
Bid Production Cost Guarantee DAM	81202	DAM NYISO Bid Production Cost Guarantee - External Units
Bid Production Cost Guarantee DAM	81206	DAM NYISO Bid Production Cost Guarantee - Internal Units
Bid Production Cost Guarantee DAM	81207	DAM NYISO Bid Production Cost Guarantee - External Units
Bid Production Cost Guarantee DAM Virtual	81501	DAM Virtual Bid Production Cost Guarantee
DAM Contract Balancing	81315	DAM Contract Balancing
DAM Contract Balancing	81317	DAM Contract Balancing
Local Reliability Balancing	81002	Balancing Local Reliability Bid Production Cost Guarantee
Local Reliability DAM	81001	DAM Local Reliability Bid Production Cost Guarantee
NYISO Cost of Operations	80901	NYISO Cost Of Operations
NYISO Cost of Operations	80902	NYISO Cost Of Operations
NYISO Cost of Operations	83501	NYISO Cost Of Operations
NYISO Cost of Operations	83502	NYISO Cost Of Operations
Residuals Balancing	81302	Balancing Market Energy Residual
Residuals Balancing	81304	Balancing Market Loss Residual
Residuals Balancing	81305	Balancing Market Congestion Balancing
Residuals Balancing	81306	Emergency Energy Purchases
Residuals Balancing	81307	Emergency Energy Sales
Residuals Balancing	81309	Balancing Market Energy Residual
Residuals Balancing	81311	Balancing Market Loss Residual
Residuals Balancing	81312	Balancing Market Congestion Balancing
Residuals Balancing	81313	Emergency Energy Purchases
Residuals Balancing	81314	Emergency Energy Sales
Residuals DAM	81301	Day Ahead Market Energy Residual
Residuals DAM	81303	Day Ahead Market Loss Residual
Residuals DAM	81308	Day Ahead Market Energy Residual
Residuals DAM	81310	Day Ahead Market Loss Residual