

SETTLEMENTS REPORT
BILLING AND ACCOUNTING WORKING GROUP MEETING
MAY 19, 2005

1. Issues Affecting The Settlement Process

- a) Latest revision dated May 19, 2005
- b) Located at: http://www.nyiso.com/markets/grid_accounting/billing_issues_report/bawg_report.pdf
- c) Issues added to the list since last update
 - i) Affecting Pre-SMD periods:
 - (1) 30-minute GTs' energy payments limited by Energy Payment Limit when already at schedule at beginning of the hour. Code should recognize they are already at schedule and not base reasonableness of output on a ramped performance metric.
 - (2) Under-generation Penalty forgiveness being pursued for GTs that are operating.
 - ii) Affecting Post-SMD periods:
 - (1) 10-minute GTs not having their start-up costs included in their RT BPCG calculation.
 - (2) DAM Margin Preservation not using DAM adjusted schedule when a unit is derated.
 - (3) Issue fixed for February & March 2005 DAM Margin Preservation not paid on Regulation or Reserves and will be corrected upon rebilling

2. Invoicing & Close-out Schedule Updates

- a) Latest revision dated May 19, 2005
- b) Reference latest Invoicing schedule: http://www.nyiso.com/services/documents/b-and-a/pdf/nyiso_settlement_schedule.pdf
 - i) Closeout invoicing is currently on hold pending resolution of the TCC issue
 - ii) Closeout months applied to invoices solely to provide Market Participants with the visibility of invoice-level financial impacts
- c) Reference latest Close-out schedule: http://www.nyiso.com/services/documents/b-and-a/pdf/final_bill_challenge_schedule.pdf
 - i) Closeout invoicing is currently on hold pending resolution of the TCC issue
 - ii) Closeout months applied to invoices solely to provide Market Participants with the visibility of invoice-level financial impacts

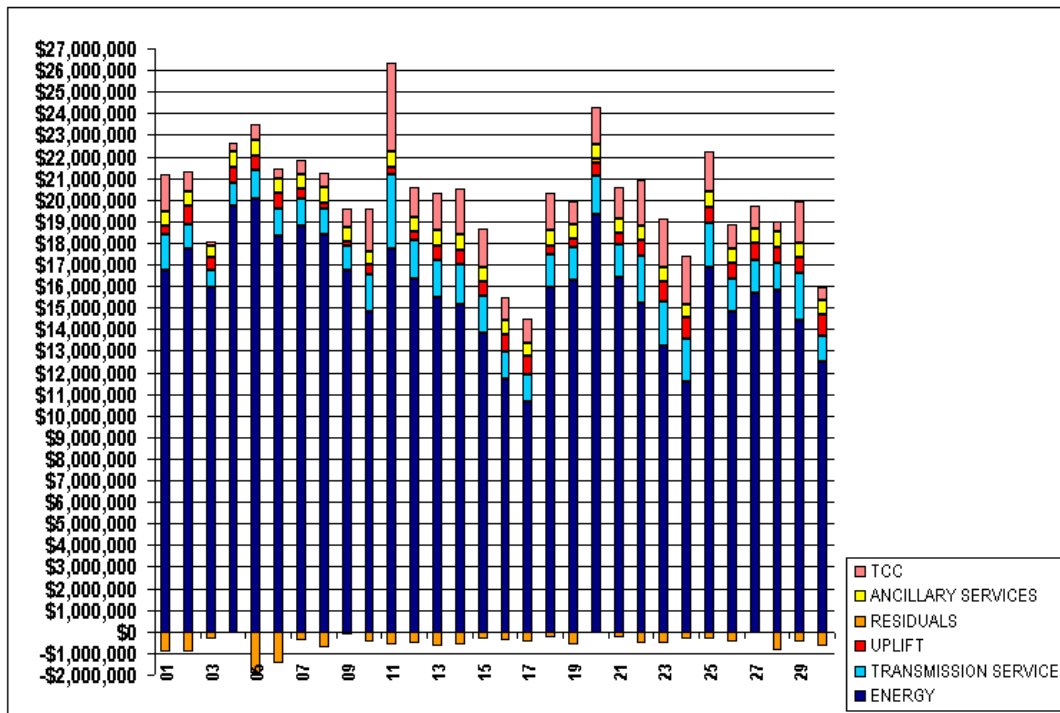
3. Review of May 6, 2005 Invoice

- a) April 2005:
 - i) Reference Attachment A for Market Costs analysis
 - ii) Reference Attachment B for Market Residuals analysis
 - iii) Reference Attachment C for Market Withdrawals analysis
 - iv) Reference Attachment D for Market Supply analysis
- b) December 2004:
 - i) Reference Attachment E for Market Costs analysis
 - ii) Reference Attachment F for Market Residuals analysis
 - iii) Reference Attachment G for Market Withdrawals analysis
 - iv) Reference Attachment H for Market Supply analysis
- c) April 2004:
 - i) Reference Attachment I for Market Costs analysis
 - ii) Reference Attachment J for Market Residuals analysis
 - iii) Reference Attachment K for Market Withdrawals analysis
 - iv) Reference Attachment L for Market Supply analysis

**SETTLEMENTS REPORT
BILLING AND ACCOUNTING WORKING GROUP MEETING
MAY 19, 2005**

ATTACHMENT A: APRIL 2005 MARKET COSTS

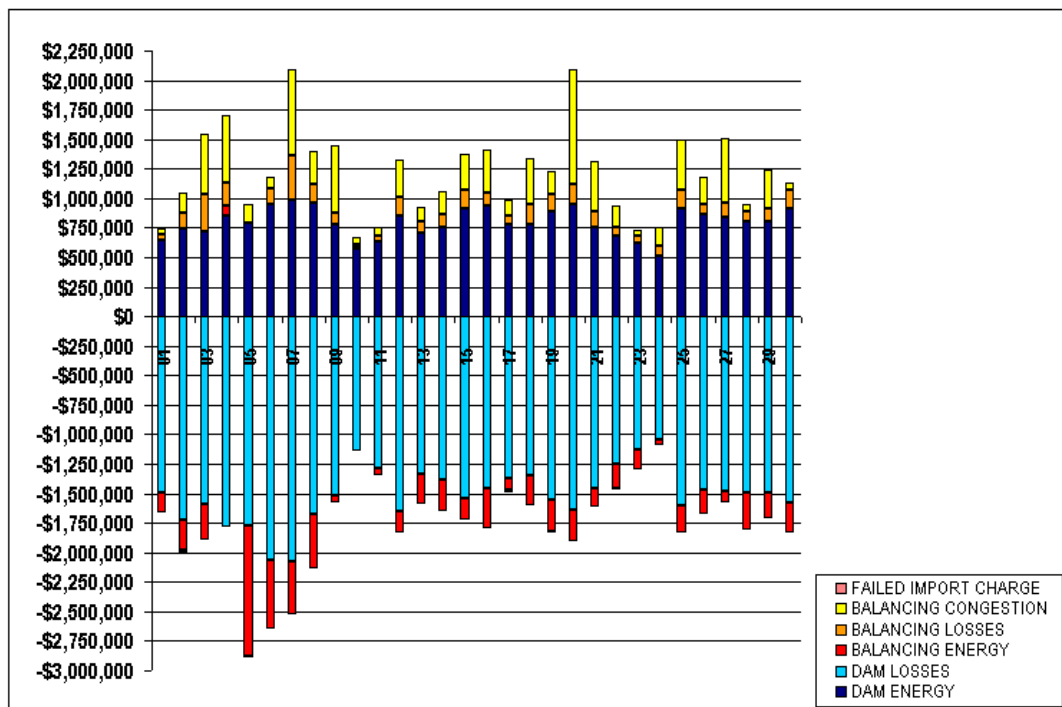
	MONDAY	TUESDAY	WEDNESDAY	THURSDAY	FRIDAY	SATURDAY	SUNDAY
					1	2	3
ENERGY					\$16,737,594.16	\$17,697,583.25	\$15,939,882.56
TRANSMISSION SERVICE					\$1,643,356.40	\$1,153,627.04	\$825,955.15
UPLIFT					\$383,857.87	\$874,972.44	\$541,547.42
RESIDUALS					(\$925,793.96)	(\$954,581.47)	(\$351,799.14)
ANCILLARY SERVICES					\$712,692.13	\$658,195.47	\$587,022.21
TCC					\$1,712,258.70	\$897,698.76	\$148,831.31
	4	5	6	7	8	9	10
ENERGY	\$19,700,704.84	\$20,076,535.57	\$18,352,640.96	\$18,766,256.17	\$18,389,445.21	\$16,716,133.91	\$14,819,079.61
TRANSMISSION SERVICE	\$1,062,357.36	\$1,265,709.91	\$1,205,068.84	\$1,262,143.07	\$1,193,729.14	\$1,120,511.56	\$1,691,175.58
UPLIFT	\$767,501.36	\$691,627.28	\$751,889.39	\$468,582.25	\$282,124.27	\$254,580.95	\$482,238.94
RESIDUALS	(\$88,397.54)	(\$1,937,260.11)	(\$1,462,439.38)	(\$427,547.24)	(\$746,797.76)	(\$130,328.67)	(\$476,900.61)
ANCILLARY SERVICES	\$684,152.86	\$708,597.29	\$688,443.89	\$679,754.63	\$715,385.48	\$646,450.69	\$590,552.96
TCC	\$418,113.63	\$749,940.65	\$431,634.51	\$662,696.34	\$644,577.85	\$828,780.76	\$2,024,369.87
	11	12	13	14	15	16	17
ENERGY	\$17,750,206.61	\$16,370,007.35	\$15,455,698.15	\$15,167,539.70	\$13,805,554.10	\$11,717,488.39	\$10,648,807.14
TRANSMISSION SERVICE	\$3,444,195.48	\$1,757,655.60	\$1,726,374.24	\$1,814,398.51	\$1,755,039.49	\$1,262,141.39	\$1,283,275.06
UPLIFT	\$321,256.84	\$398,055.40	\$701,168.77	\$694,893.34	\$642,467.80	\$764,312.37	\$827,372.85
RESIDUALS	(\$598,993.08)	(\$515,616.63)	(\$664,878.39)	(\$593,630.83)	(\$350,367.92)	(\$388,990.98)	(\$501,823.66)
ANCILLARY SERVICES	\$716,626.10	\$681,109.13	\$692,061.14	\$686,023.63	\$683,485.24	\$671,027.90	\$612,112.21
TCC	\$4,127,471.29	\$1,349,589.04	\$1,736,943.15	\$2,118,481.73	\$1,739,698.15	\$1,050,247.49	\$1,098,173.70
	18	19	20	21	22	23	24
ENERGY	\$15,961,123.83	\$16,277,085.33	\$19,345,448.52	\$16,439,148.16	\$15,183,539.02	\$13,228,801.61	\$11,548,543.08
TRANSMISSION SERVICE	\$1,480,645.68	\$1,489,101.06	\$1,732,833.00	\$1,506,204.14	\$2,183,370.86	\$2,026,718.96	\$1,997,812.19
UPLIFT	\$409,453.66	\$417,353.18	\$608,667.57	\$520,214.48	\$743,776.49	\$966,651.17	\$985,594.72
RESIDUALS	(\$266,179.18)	(\$596,401.18)	\$187,651.36	(\$310,053.53)	(\$523,663.47)	(\$566,222.61)	(\$327,926.21)
ANCILLARY SERVICES	\$711,367.62	\$655,386.53	\$698,945.19	\$664,294.27	\$689,496.22	\$666,546.27	\$586,430.64
TCC	\$1,738,685.63	\$1,063,781.09	\$1,679,719.30	\$1,444,012.72	\$2,130,692.67	\$2,221,035.21	\$2,262,608.76
	25	26	27	28	29	30	
ENERGY	\$16,852,112.07	\$14,797,180.85	\$15,651,190.82	\$15,824,085.65	\$14,427,868.97	\$12,526,897.74	
TRANSMISSION SERVICE	\$2,054,911.33	\$1,533,084.36	\$1,522,437.14	\$1,214,002.34	\$2,188,672.10	\$1,185,868.42	
UPLIFT	\$741,967.95	\$707,212.12	\$829,239.40	\$757,272.97	\$708,090.10	\$956,991.84	
RESIDUALS	(\$333,568.67)	(\$495,583.49)	(\$74,802.62)	(\$861,489.64)	(\$480,343.01)	(\$695,808.54)	
ANCILLARY SERVICES	\$730,935.59	\$724,149.57	\$669,253.58	\$712,339.59	\$694,435.32	\$705,232.28	
TCC	\$1,877,628.26	\$1,071,393.41	\$1,041,488.25	\$497,503.02	\$1,872,534.97	\$598,578.30	



**SETTLEMENTS REPORT
BILLING AND ACCOUNTING WORKING GROUP MEETING
MAY 19, 2005**

ATTACHMENT B: APRIL 2005 MARKET RESIDUALS

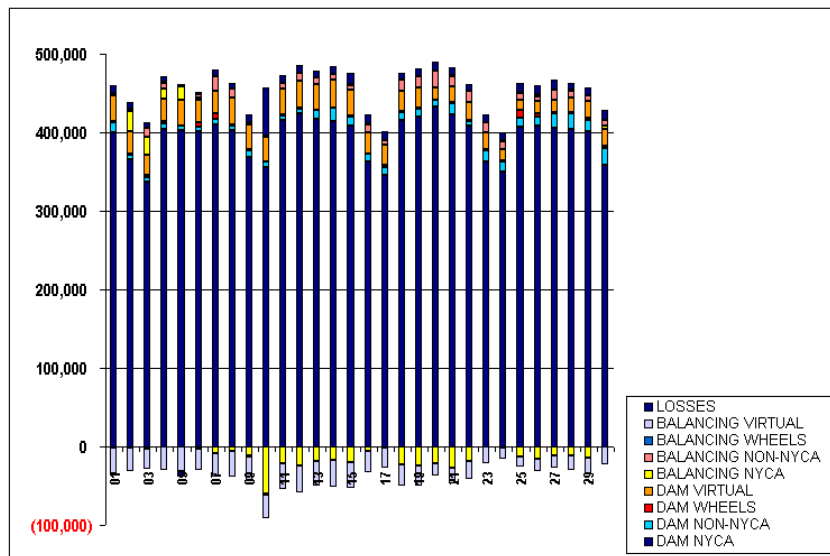
	MONDAY	TUESDAY	WEDNESDAY	THURSDAY	FRIDAY	SATURDAY	SUNDAY
DAM ENERGY					1	2	3
DAM LOSSES					\$642,661.35	\$737,864.19	\$714,192.82
BALANCING ENERGY					(\$1,490,799.24)	(\$1,726,309.30)	(\$1,595,273.20)
BALANCING LOSSES					(\$175,181.56)	(\$256,276.39)	(\$303,665.97)
BALANCING CONGESTION					\$56,180.88	\$133,169.36	\$323,796.60
FAILED IMPORT CHARGE					\$44,172.94	\$173,183.78	\$509,667.92
					(\$2,818.33)	(\$16,213.11)	(\$517.31)
	4	5	6	7	8	9	10
DAM ENERGY	\$850,335.48	\$794,839.28	\$951,191.27	\$984,869.24	\$960,786.83	\$774,320.47	\$571,191.02
DAM LOSSES	(\$1,783,377.71)	(\$1,769,444.78)	(\$2,069,555.69)	(\$2,072,724.79)	(\$1,678,746.25)	(\$1,515,562.12)	(\$1,144,772.04)
BALANCING ENERGY	\$83,104.74	(\$1,112,588.64)	(\$576,982.31)	(\$447,486.87)	(\$458,305.44)	(\$56,612.93)	\$24,882.69
BALANCING LOSSES	\$201,791.27	(\$3,015.43)	\$133,898.16	\$377,461.68	\$153,558.10	\$102,718.53	\$12,356.17
BALANCING CONGESTION	\$564,059.21	\$152,949.46	\$99,009.19	\$730,666.02	\$279,256.93	\$564,807.38	\$59,441.55
FAILED IMPORT CHARGE	(\$4,310.53)	\$0.00	\$0.00	(\$332.52)	(\$3,347.93)	\$0.00	\$0.00
	11	12	13	14	15	16	17
DAM ENERGY	\$632,534.08	\$849,035.87	\$709,086.23	\$757,785.77	\$916,665.51	\$931,676.10	\$775,140.58
DAM LOSSES	(\$1,289,283.79)	(\$1,645,834.06)	(\$1,339,370.65)	(\$1,378,678.01)	(\$1,540,456.35)	(\$1,460,708.55)	(\$1,374,295.81)
BALANCING ENERGY	(\$59,279.13)	(\$191,300.19)	(\$249,636.16)	(\$267,355.55)	(\$181,589.30)	(\$335,294.00)	(\$97,462.85)
BALANCING LOSSES	\$49,809.84	\$162,520.78	\$99,048.58	\$111,108.62	\$148,497.83	\$113,944.97	\$81,965.28
BALANCING CONGESTION	\$70,628.88	\$309,960.97	\$115,993.61	\$184,375.22	\$308,640.59	\$361,847.22	\$132,495.01
FAILED IMPORT CHARGE	(\$3,402.96)	\$0.00	\$0.00	(\$866.88)	(\$2,125.70)	(\$456.72)	(\$19,665.87)
	18	19	20	21	22	23	24
DAM ENERGY	\$781,225.45	\$885,781.54	\$948,125.95	\$757,583.34	\$676,329.94	\$619,769.11	\$511,595.36
DAM LOSSES	(\$1,342,537.87)	(\$1,554,673.29)	(\$1,635,064.36)	(\$1,454,510.01)	(\$1,250,066.61)	(\$1,128,956.49)	(\$1,047,216.70)
BALANCING ENERGY	(\$257,988.34)	(\$267,028.87)	(\$266,754.27)	(\$164,270.72)	(\$204,856.22)	(\$169,659.79)	(\$40,806.95)
BALANCING LOSSES	\$164,860.00	\$153,071.24	\$170,875.32	\$125,871.15	\$75,200.14	\$64,674.95	\$81,989.75
BALANCING CONGESTION	\$390,531.13	\$194,521.67	\$971,300.52	\$425,551.71	\$187,819.14	\$48,465.23	\$167,645.09
FAILED IMPORT CHARGE	(\$2,269.55)	(\$8,073.47)	(\$831.80)	(\$279.00)	(\$8,089.86)	(\$515.62)	(\$1,132.76)
	25	26	27	28	29	30	
DAM ENERGY	\$915,686.47	\$868,008.59	\$837,066.77	\$806,985.48	\$801,809.12	\$917,921.53	
DAM LOSSES	(\$1,603,083.29)	(\$1,468,976.23)	(\$1,485,971.80)	(\$1,487,385.47)	(\$1,495,830.42)	(\$1,575,626.88)	
BALANCING ENERGY	(\$227,549.16)	(\$204,227.72)	(\$96,097.25)	(\$316,996.08)	(\$216,458.79)	(\$257,384.06)	
BALANCING LOSSES	\$151,299.34	\$79,882.90	\$125,283.85	\$81,501.13	\$116,017.17	\$154,217.29	
BALANCING CONGESTION	\$430,077.97	\$229,773.93	\$544,915.81	\$57,533.59	\$318,816.64	\$65,429.94	
FAILED IMPORT CHARGE	\$0.00	(\$44.96)	\$0.00	(\$3,128.29)	(\$4,696.73)	(\$366.36)	



**SETTLEMENTS REPORT
BILLING AND ACCOUNTING WORKING GROUP MEETING
MAY 19, 2005**

ATTACHMENT C: APRIL 2005 WITHDRAWALS

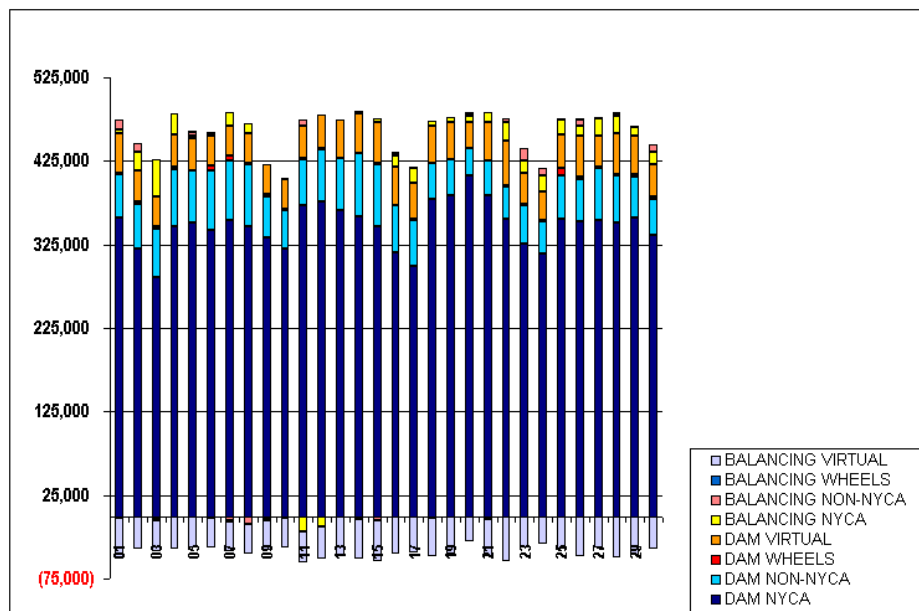
	MONDAY	TUESDAY	WEDNESDAY	THURSDAY	FRIDAY	SATURDAY	SUNDAY
DAM NYCA					400,670	365,230	337,637
DAM NON-NYCA					11,931	5,522	5,123
DAM WHEELS					1,953	1,532	2,850
DAM VIRTUAL					32,707	29,658	26,084
BALANCING NYCA					2,035	25,079	22,939
BALANCING NON-NYCA					1,051	2,283	10,878
BALANCING WHEELS					(1,953)	(1,182)	(2,376)
BALANCING VIRTUAL					(32,707)	(29,658)	(26,084)
LOSSES					9,091	8,807	7,812
	4	5	6	7	8	9	10
DAM NYCA	404,422	402,743	401,744	410,338	402,398	368,275	355,116
DAM NON-NYCA	7,394	6,542	5,846	6,797	6,712	3,995	7,426
DAM WHEELS	2,300	0	5,866	6,504	1,600	1,887	800
DAM VIRTUAL	29,396	31,514	27,992	28,780	32,875	30,414	30,793
BALANCING NYCA	12,691	17,611	2,387	(8,500)	(6,531)	(11,433)	(60,307)
BALANCING NON-NYCA	6,981	2,371	4,532	19,207	12,202	3,887	1,748
BALANCING WHEELS	400	520	(2,238)	(752)	160	(1,587)	(621)
BALANCING VIRTUAL	(29,396)	(31,514)	(27,992)	(28,780)	(32,875)	(30,414)	(30,793)
LOSSES	8,008	(7,248)	3,500	8,648	6,972	10,102	61,804
	11	12	13	14	15	16	17
DAM NYCA	415,016	423,798	417,324	413,936	409,278	362,510	345,979
DAM NON-NYCA	6,759	6,609	11,334	18,027	10,825	11,062	9,835
DAM WHEELS	1,398	1,500	0	0	800	0	2,078
DAM VIRTUAL	32,426	34,195	32,405	34,523	33,163	26,456	25,683
BALANCING NYCA	(21,888)	(23,866)	(18,208)	(16,581)	(19,872)	(6,334)	(1,734)
BALANCING NON-NYCA	6,933	9,987	8,580	7,506	6,587	10,345	6,128
BALANCING WHEELS	(200)	191	172	100	540	1,046	21
BALANCING VIRTUAL	(32,426)	(34,195)	(32,405)	(34,523)	(33,163)	(26,456)	(25,683)
LOSSES	10,041	10,123	8,486	10,094	14,777	12,157	12,323
	18	19	20	21	22	23	24
DAM NYCA	415,635	420,478	432,573	423,034	408,108	362,920	349,848
DAM NON-NYCA	10,566	10,192	9,000	14,267	6,327	14,882	12,886
DAM WHEELS	300	391	67	700	1,100	894	1,600
DAM VIRTUAL	26,903	26,098	15,743	19,930	22,604	20,741	13,594
BALANCING NYCA	(23,106)	(23,602)	(22,055)	(27,631)	(18,171)	77	(2,068)
BALANCING NON-NYCA	13,366	14,079	20,908	14,147	15,243	12,848	11,002
BALANCING WHEELS	240	193	723	800	(400)	851	760
BALANCING VIRTUAL	(26,903)	(26,098)	(15,743)	(19,930)	(22,604)	(20,741)	(13,594)
LOSSES	9,023	9,663	10,466	9,845	8,563	9,530	9,818
	25	26	27	28	29	30	
DAM NYCA	407,698	408,166	405,956	404,840	401,813	358,780	
DAM NON-NYCA	10,387	12,030	17,806	19,654	14,594	20,510	
DAM WHEELS	10,139	3,811	2,210	1,660	2,741	2,756	
DAM VIRTUAL	13,281	16,125	15,355	18,796	21,508	22,384	
BALANCING NYCA	(12,205)	(15,306)	(11,565)	(11,044)	(13,714)	4,684	
BALANCING NON-NYCA	8,721	6,269	12,253	8,266	6,380	6,633	
BALANCING WHEELS	1,882	1,975	443	970	(805)	(651)	
BALANCING VIRTUAL	(13,281)	(16,125)	(15,355)	(18,796)	(21,508)	(22,384)	
LOSSES	11,071	11,227	12,620	8,869	9,638	12,581	



SETTLEMENTS REPORT
BILLING AND ACCOUNTING WORKING GROUP MEETING
MAY 19, 2005

ATTACHMENT D: APRIL 2005 SUPPLY

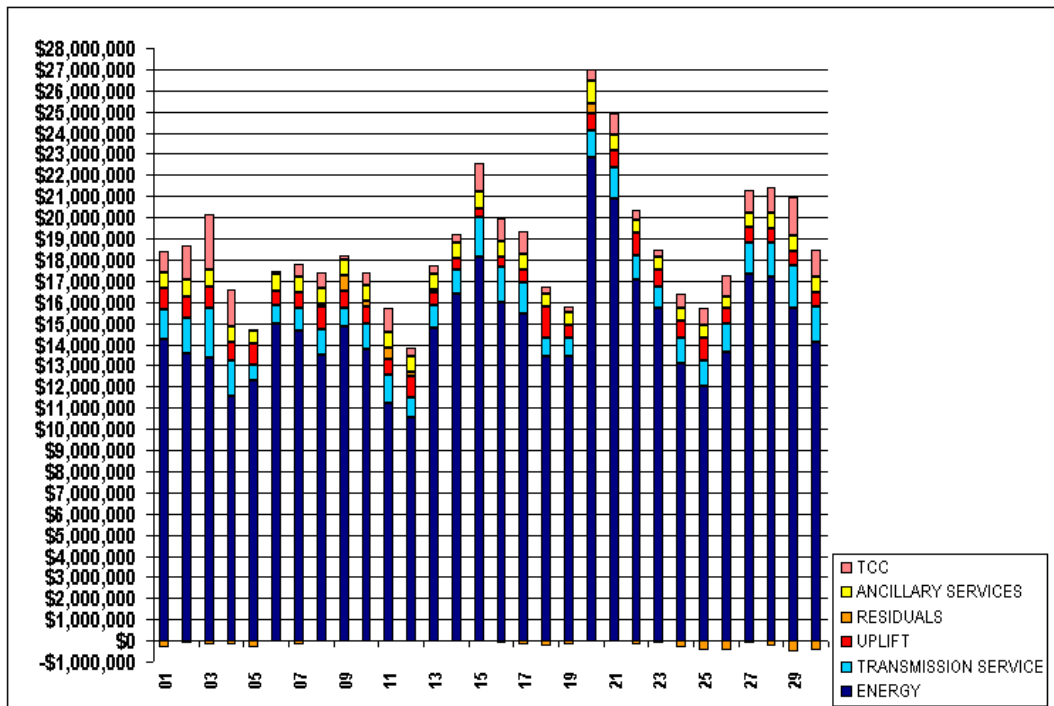
	MONDAY	TUESDAY	WEDNESDAY	THURSDAY	FRIDAY	SATURDAY	SUNDAY
					1	2	3
DAM NYCA					356,568	319,361	286,253
DAM NON-NYCA					52,676	54,882	57,482
DAM WHEELS					1,953	1,532	2,850
DAM VIRTUAL					47,129	37,990	36,211
BALANCING NYCA					4,176	22,425	43,789
BALANCING NON-NYCA					11,358	10,252	(3,205)
BALANCING WHEELS					(1,953)	(1,182)	(2,376)
BALANCING VIRTUAL					(47,129)	(37,990)	(36,211)
	4	5	6	7	8	9	10
DAM NYCA	346,152	350,731	342,221	354,252	346,958	334,033	320,704
DAM NON-NYCA	68,988	63,229	71,067	70,859	73,664	48,898	45,770
DAM WHEELS	2,300	0	5,866	6,504	1,600	1,887	800
DAM VIRTUAL	38,537	38,346	36,254	35,441	36,041	35,909	35,955
BALANCING NYCA	25,657	3,332	2,168	16,931	11,875	(3,596)	943
BALANCING NON-NYCA	(1,301)	4,727	2,548	(5,552)	(9,744)	491	(1,630)
BALANCING WHEELS	400	520	(2,238)	(762)	160	(1,587)	(521)
BALANCING VIRTUAL	(38,537)	(38,346)	(36,254)	(35,441)	(36,041)	(35,909)	(35,955)
	11	12	13	14	15	16	17
DAM NYCA	371,320	375,761	365,885	359,081	347,200	315,306	298,748
DAM NON-NYCA	55,908	63,304	62,769	75,169	74,564	57,391	54,777
DAM WHEELS	1,398	1,500	0	0	800	0	2,078
DAM VIRTUAL	37,845	39,237	45,240	46,987	48,531	44,791	43,219
BALANCING NYCA	(18,138)	(12,051)	(847)	2,873	4,991	13,581	17,076
BALANCING NON-NYCA	7,971	187	259	(4,142)	(5,161)	3,452	1,931
BALANCING WHEELS	(200)	191	172	100	540	1,046	21
BALANCING VIRTUAL	(37,845)	(39,237)	(45,240)	(46,987)	(48,531)	(44,791)	(43,219)
	18	19	20	21	22	23	24
DAM NYCA	379,587	383,975	407,247	383,826	355,012	326,563	314,465
DAM NON-NYCA	42,219	42,282	33,707	41,072	39,268	45,340	38,587
DAM WHEELS	300	391	67	700	1,100	894	1,600
DAM VIRTUAL	45,307	45,250	31,047	45,242	54,550	38,513	33,407
BALANCING NYCA	5,942	5,155	7,279	12,222	21,220	14,894	20,296
BALANCING NON-NYCA	(2,264)	(602)	2,807	(3,458)	4,569	13,460	8,148
BALANCING WHEELS	240	193	723	830	(400)	851	760
BALANCING VIRTUAL	(45,307)	(45,250)	(31,047)	(45,242)	(54,550)	(38,512)	(33,407)
	25	26	27	28	29	30	
DAM NYCA	356,083	352,143	354,008	350,604	356,902	335,904	
DAM NON-NYCA	51,046	50,926	62,156	56,491	49,171	43,269	
DAM WHEELS	10,139	3,811	2,210	1,660	2,741	2,756	
DAM VIRTUAL	38,847	47,939	37,324	49,530	45,662	38,895	
BALANCING NYCA	17,665	12,885	19,799	20,410	11,532	15,125	
BALANCING NON-NYCA	879	6,433	1,008	3,079	1,107	8,990	
BALANCING WHEELS	1,382	1,975	443	970	(935)	(881)	
BALANCING VIRTUAL	(38,847)	(47,938)	(37,323)	(49,530)	(45,662)	(38,895)	



**SETTLEMENTS REPORT
BILLING AND ACCOUNTING WORKING GROUP MEETING
MAY 19, 2005**

ATTACHMENT E: DECEMBER 2004 MARKET COSTS

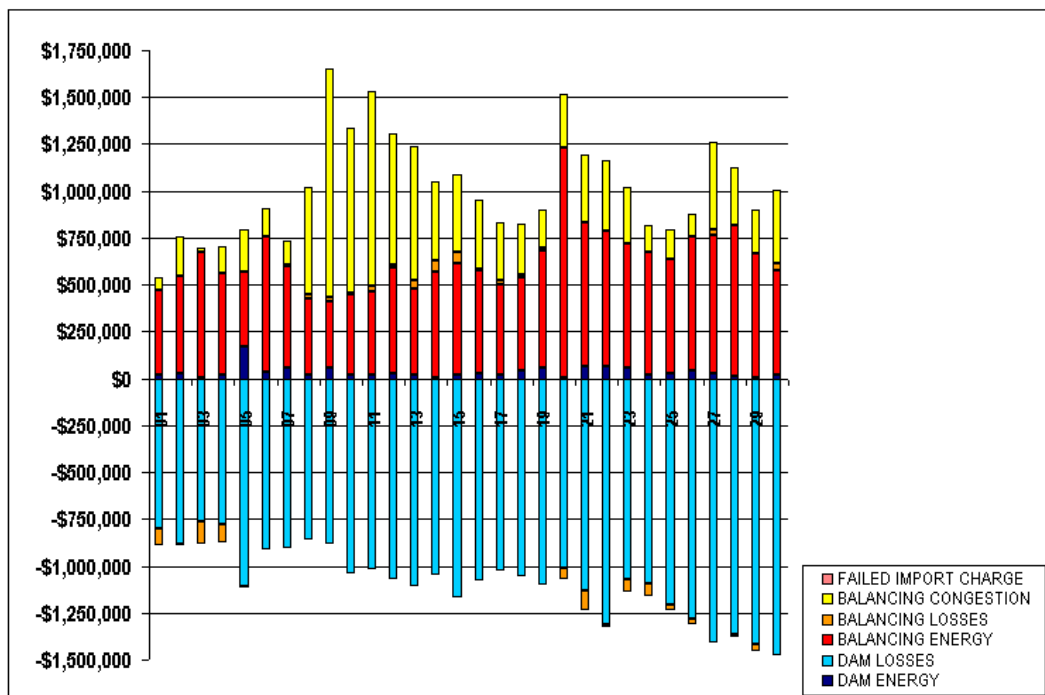
	MONDAY	TUESDAY	WEDNESDAY	THURSDAY	FRIDAY	SATURDAY	SUNDAY
			1	2	3	4	5
ENERGY			\$14,261,125.66	\$13,535,627.11	\$13,366,053.21	\$11,567,545.10	\$12,276,039.15
TRANSMISSION SERVICE			\$1,388,443.10	\$1,710,894.37	\$2,365,734.75	\$1,644,988.23	\$783,022.26
UPLIFT			\$989,426.22	\$1,004,752.38	\$992,501.69	\$882,541.85	\$962,065.13
RESIDUALS			(\$351,422.50)	(\$134,465.56)	(\$188,696.59)	(\$172,985.60)	(\$324,250.81)
ANCILLARY SERVICES			\$740,180.41	\$834,977.92	\$815,056.10	\$744,289.82	\$595,045.52
TCC			\$1,012,423.16	\$1,549,925.37	\$2,613,789.23	\$1,720,192.10	\$115,742.32
	6	7	8	9	10	11	12
ENERGY	\$14,968,823.60	\$14,623,438.54	\$13,532,296.80	\$14,838,157.23	\$13,797,542.49	\$11,240,312.25	\$10,572,080.12
TRANSMISSION SERVICE	\$878,974.13	\$1,101,521.94	\$1,169,999.41	\$886,870.45	\$1,193,316.86	\$1,294,637.14	\$894,150.48
UPLIFT	\$662,461.30	\$739,444.52	\$1,069,239.22	\$764,823.80	\$785,040.98	\$792,035.00	\$1,022,585.66
RESIDUALS	(\$1,959.47)	(\$172,652.31)	\$159,909.29	\$767,008.16	\$297,745.82	\$515,090.52	\$236,913.89
ANCILLARY SERVICES	\$797,205.42	\$755,593.97	\$721,611.53	\$722,056.01	\$718,342.95	\$715,298.09	\$694,923.34
TCC	\$152,269.39	\$544,099.64	\$721,450.04	\$204,029.77	\$576,529.51	\$1,148,779.23	\$389,576.77
	13	14	15	16	17	18	19
ENERGY	\$14,749,509.59	\$16,388,850.01	\$18,102,719.67	\$15,995,626.43	\$15,425,467.85	\$13,410,732.75	\$13,438,491.87
TRANSMISSION SERVICE	\$1,115,374.15	\$1,147,661.01	\$1,941,351.41	\$1,651,536.68	\$1,477,316.27	\$926,431.43	\$893,670.18
UPLIFT	\$583,250.21	\$545,679.04	\$397,951.30	\$465,050.37	\$646,870.22	\$1,437,002.14	\$602,392.16
RESIDUALS	\$133,647.79	(\$1,727.24)	(\$75,450.11)	(\$131,157.27)	(\$195,313.27)	(\$229,456.11)	(\$197,981.70)
ANCILLARY SERVICES	\$765,909.78	\$727,874.84	\$749,376.58	\$727,426.74	\$729,231.45	\$628,134.45	\$596,604.51
TCC	\$393,465.05	\$403,312.83	\$1,374,055.22	\$1,095,269.12	\$1,033,144.91	\$333,649.58	\$257,862.92
	20	21	22	23	24	25	26
ENERGY	\$22,829,333.14	\$20,868,103.04	\$17,044,947.51	\$15,694,347.20	\$13,125,216.41	\$12,053,381.85	\$13,639,496.80
TRANSMISSION SERVICE	\$1,262,748.60	\$1,523,557.61	\$1,162,177.14	\$996,960.30	\$1,152,407.30	\$1,187,493.57	\$1,337,685.58
UPLIFT	\$846,425.50	\$742,673.74	\$1,043,655.11	\$803,459.30	\$832,221.18	\$1,070,458.90	\$708,304.50
RESIDUALS	\$451,148.07	(\$43,431.70)	(\$166,565.11)	(\$121,051.87)	(\$346,669.23)	(\$444,404.44)	(\$435,596.01)
ANCILLARY SERVICES	\$1,072,313.95	\$772,218.65	\$648,459.72	\$642,237.87	\$593,032.60	\$603,218.93	\$592,419.34
TCC	\$518,106.93	\$1,001,447.55	\$418,291.76	\$317,717.27	\$679,181.40	\$789,193.91	\$973,446.58
	27	28	29	30	31		
ENERGY	\$17,311,865.25	\$17,216,731.28	\$15,742,590.97	\$14,133,281.15	\$11,916,430.33		
TRANSMISSION SERVICE	\$1,502,051.67	\$1,579,322.79	\$1,977,754.52	\$1,650,977.28	\$1,151,424.61		
UPLIFT	\$694,390.18	\$695,098.64	\$698,457.58	\$669,886.78	\$552,540.50		
RESIDUALS	(\$149,758.42)	(\$255,417.36)	(\$548,930.55)	(\$467,673.11)	(\$482,000.73)		
ANCILLARY SERVICES	\$680,724.05	\$714,159.42	\$688,586.36	\$721,230.30	\$786,770.51		
TCC	\$1,090,485.06	\$1,202,241.58	\$1,871,252.29	\$1,263,117.26	\$1,263,117.26		



SETTLEMENTS REPORT
BILLING AND ACCOUNTING WORKING GROUP MEETING
MAY 19, 2005

ATTACHMENT F: DECEMBER 2004 MARKET RESIDUALS

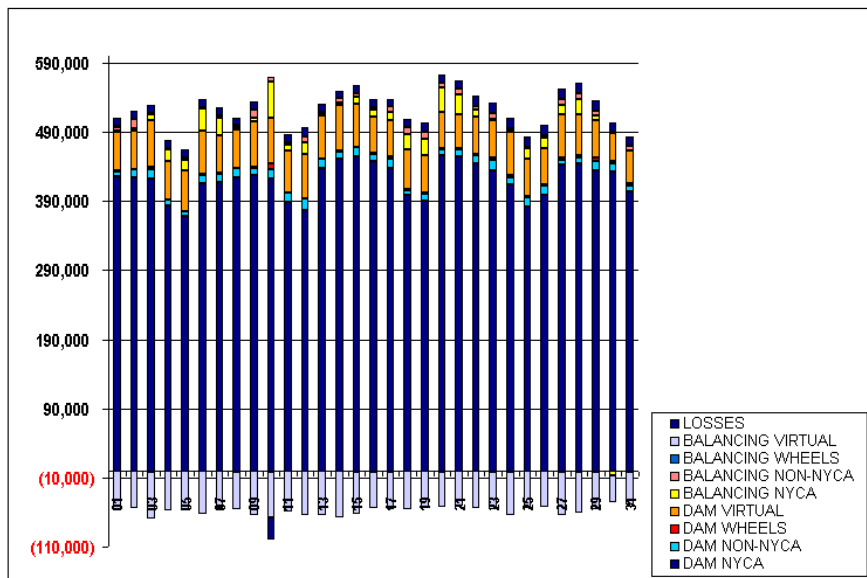
	MONDAY	TUESDAY	WEDNESDAY	THURSDAY	FRIDAY	SATURDAY	SUNDAY
			1	2	3	4	5
DAM ENERGY			\$18,154.54	\$24,195.66	\$6,958.91	\$16,970.53	\$173,851.65
DAM LOSSES			(\$800,782.17)	(\$886,562.71)	(\$765,474.50)	(\$777,846.15)	(\$1,111,916.58)
BALANCING ENERGY			\$453,966.05	\$521,307.49	\$665,745.02	\$543,851.91	\$393,446.89
BALANCING LOSSES			(\$88,912.86)	(\$4,673.82)	(\$120,695.01)	(\$101,393.60)	(\$4,339.23)
BALANCING CONGESTION			\$66,151.94	\$211,267.82	\$24,868.99	\$145,431.71	\$224,706.46
FAILED IMPORT CHARGE			\$0.00	\$0.00	\$0.00	\$0.00	\$0.00
	6	7	8	9	10	11	12
DAM ENERGY	\$34,607.93	\$59,933.93	\$23,255.65	\$57,187.03	\$19,887.86	\$16,403.97	\$30,941.88
DAM LOSSES	(\$909,938.56)	(\$903,269.26)	(\$863,296.73)	(\$884,894.95)	(\$1,038,472.14)	(\$1,018,394.74)	(\$1,068,203.29)
BALANCING ENERGY	\$721,793.16	\$540,147.83	\$404,372.70	\$351,611.14	\$427,212.38	\$447,586.81	\$563,385.86
BALANCING LOSSES	\$1,398.82	\$4,733.89	\$18,388.72	\$21,055.23	\$5,370.33	\$26,077.39	\$13,547.63
BALANCING CONGESTION	\$150,179.18	\$125,801.30	\$577,188.95	\$1,222,049.71	\$883,747.39	\$1,043,417.09	\$697,241.81
FAILED IMPORT CHARGE	\$0.00	\$0.00	\$0.00	\$0.00	\$0.00	\$0.00	\$0.00
	13	14	15	16	17	18	19
DAM ENERGY	\$19,064.41	\$5,925.08	\$18,639.24	\$26,869.31	\$16,834.81	\$41,491.04	\$59,967.99
DAM LOSSES	(\$1,107,322.21)	(\$1,052,347.25)	(\$1,165,377.57)	(\$1,081,064.58)	(\$1,029,585.52)	(\$1,053,168.84)	(\$1,100,128.64)
BALANCING ENERGY	\$462,973.84	\$563,675.47	\$593,674.36	\$549,866.95	\$487,671.80	\$499,438.63	\$620,801.00
BALANCING LOSSES	\$42,537.92	\$60,246.79	\$65,591.12	\$7,430.40	\$20,868.02	\$12,729.23	\$14,427.53
BALANCING CONGESTION	\$716,393.83	\$420,772.67	\$412,022.74	\$365,740.65	\$308,897.62	\$270,053.83	\$206,960.42
FAILED IMPORT CHARGE	\$0.00	\$0.00	\$0.00	\$0.00	\$0.00	\$0.00	\$0.00
	20	21	22	23	24	25	26
DAM ENERGY	\$8,153.86	\$61,864.87	\$65,982.97	\$56,931.39	\$19,399.42	\$25,517.16	\$44,069.64
DAM LOSSES	(\$1,009,642.26)	(\$1,132,723.40)	(\$1,313,795.27)	(\$1,069,240.56)	(\$1,097,036.46)	(\$1,204,944.53)	(\$1,230,300.89)
BALANCING ENERGY	\$1,219,716.33	\$769,640.37	\$723,664.57	\$660,426.08	\$667,750.09	\$608,224.07	\$712,079.46
BALANCING LOSSES	(\$59,302.72)	(\$105,945.01)	(\$13,738.48)	(\$70,757.41)	(\$67,338.19)	(\$34,785.75)	(\$34,920.83)
BALANCING CONGESTION	\$292,222.86	\$363,731.47	\$371,321.10	\$301,588.63	\$140,555.91	\$161,584.61	\$123,476.61
FAILED IMPORT CHARGE	\$0.00	\$0.00	\$0.00	\$0.00	\$0.00	\$0.00	\$0.00
	27	28	29	30	31		
DAM ENERGY	\$28,111.69	\$14,465.41	\$2,464.70	\$17,281.38	\$62,096.55		
DAM LOSSES	(\$1,409,598.83)	(\$1,366,304.30)	(\$1,417,944.09)	(\$1,473,692.16)	(\$1,348,868.88)		
BALANCING ENERGY	\$739,193.01	\$799,174.97	\$664,061.62	\$562,370.21	\$422,976.19		
BALANCING LOSSES	\$29,861.68	(\$11,331.80)	(\$34,305.64)	\$31,355.80	\$29,030.88		
BALANCING CONGESTION	\$462,674.03	\$308,578.36	\$236,792.86	\$395,011.66	\$352,764.53		
FAILED IMPORT CHARGE	\$0.00	\$0.00	\$0.00	\$0.00	\$0.00		



SETTLEMENTS REPORT
BILLING AND ACCOUNTING WORKING GROUP MEETING
MAY 19, 2005

ATTACHMENT G: DECEMBER 2004 WITHDRAWALS

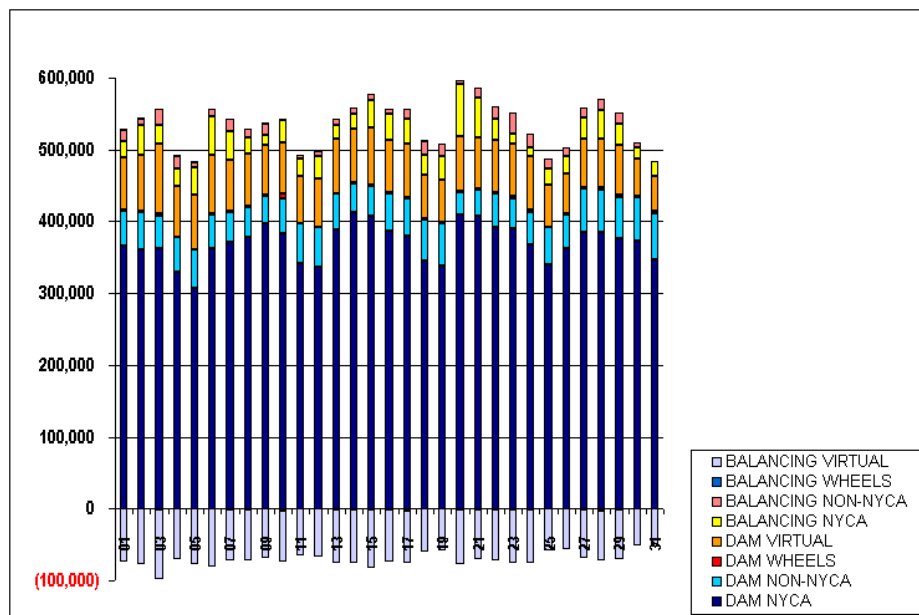
	MONDAY	TUESDAY	WEDNESDAY	THURSDAY	FRIDAY	SATURDAY	SUNDAY
			1	2	3	4	5
DAM NYCA			425,169	424,632	422,466	383,897	368,173
DAM NON-NYCA			6,675	10,684	13,913	7,484	7,188
DAM WHEELS			1,900	1,275	2,875	0	0
DAM VIRTUAL			55,602	54,806	67,947	57,147	58,283
BALANCING NYCA			3,029	4,063	8,249	16,544	16,764
BALANCING NON-NYCA			5,046	12,498	1,000	898	2,173
BALANCING WHEELS			1,400	1,203	(1,575)	864	891
BALANCING VIRTUAL			(65,602)	(64,806)	(67,947)	(67,147)	(68,283)
LOSSES			12,250	11,928	11,790	11,398	12,581
	6	7	8	9	10	11	12
DAM NYCA	416,337	418,218	423,547	426,762	422,993	388,469	377,395
DAM NON-NYCA	11,543	11,585	13,460	11,636	13,530	14,379	17,022
DAM WHEELS	1,275	1,275	1,275	1,275	7,675	0	0
DAM VIRTUAL	62,514	53,779	54,608	65,133	65,970	60,010	63,672
BALANCING NYCA	31,524	25,866	3,950	5,416	53,453	9,197	16,853
BALANCING NON-NYCA	2,162	3,045	3,360	11,276	5,978	2,997	8,278
BALANCING WHEELS	909	(724)	(978)	1,525	(2,202)	335	650
BALANCING VIRTUAL	(62,514)	(53,779)	(54,608)	(65,133)	(65,970)	(60,010)	(63,672)
LOSSES	11,591	11,408	10,561	11,290	(31,608)	11,577	12,308
	13	14	15	16	17	18	19
DAM NYCA	438,266	450,538	453,887	448,303	437,911	398,609	390,280
DAM NON-NYCA	12,238	10,855	13,564	9,669	13,229	7,596	10,199
DAM WHEELS	1,275	1,275	1,275	1,700	2,900	1,600	1,600
DAM VIRTUAL	62,842	66,356	62,257	52,805	53,737	56,443	53,712
BALANCING NYCA	643	4,083	10,055	9,050	10,657	22,119	24,406
BALANCING NON-NYCA	3,937	5,493	4,884	4,607	8,778	9,674	10,014
BALANCING WHEELS	(937)	(725)	(1,017)	(1,294)	(2,244)	1,157	400
BALANCING VIRTUAL	(62,842)	(66,356)	(62,257)	(52,805)	(53,737)	(56,443)	(53,712)
LOSSES	11,919	11,394	12,216	10,690	9,695	11,144	12,962
	20	21	22	23	24	25	26
DAM NYCA	455,976	454,210	444,055	433,693	413,400	381,981	398,886
DAM NON-NYCA	9,311	10,321	11,491	16,009	10,303	13,226	14,223
DAM WHEELS	1,700	1,700	1,700	3,100	4,700	1,600	1,600
DAM VIRTUAL	51,621	49,574	54,248	54,327	61,923	53,782	51,946
BALANCING NYCA	35,183	28,929	10,773	2,213	3,118	15,998	15,165
BALANCING NON-NYCA	8,036	7,788	5,705	8,070	1,085	1,477	2,556
BALANCING WHEELS	(1,700)	(925)	(810)	(1,904)	(2,050)	(350)	(39)
BALANCING VIRTUAL	(51,621)	(49,574)	(54,248)	(54,327)	(61,923)	(53,782)	(51,946)
LOSSES	10,620	12,386	14,425	14,658	15,182	15,260	15,515
	27	28	29	30	31		
DAM NYCA	443,273	443,849	434,747	432,500	403,761		
DAM NON-NYCA	5,723	9,029	13,521	12,549	9,024		
DAM WHEELS	3,200	3,200	4,475	3,200	3,200		
DAM VIRTUAL	62,575	59,144	53,888	39,561	46,677		
BALANCING NYCA	14,282	22,767	7,858	(6,379)	(1,934)		
BALANCING NON-NYCA	8,476	7,469	6,798	2,164	6,940		
BALANCING WHEELS	(1,570)	(2,556)	(1,275)	(7)	77		
BALANCING VIRTUAL	(62,575)	(59,144)	(53,888)	(39,561)	(46,677)		
LOSSES	15,399	14,786	14,416	14,027	13,456		



**SETTLEMENTS REPORT
BILLING AND ACCOUNTING WORKING GROUP MEETING
MAY 19, 2005**

ATTACHMENT H: DECEMBER 2004 SUPPLY

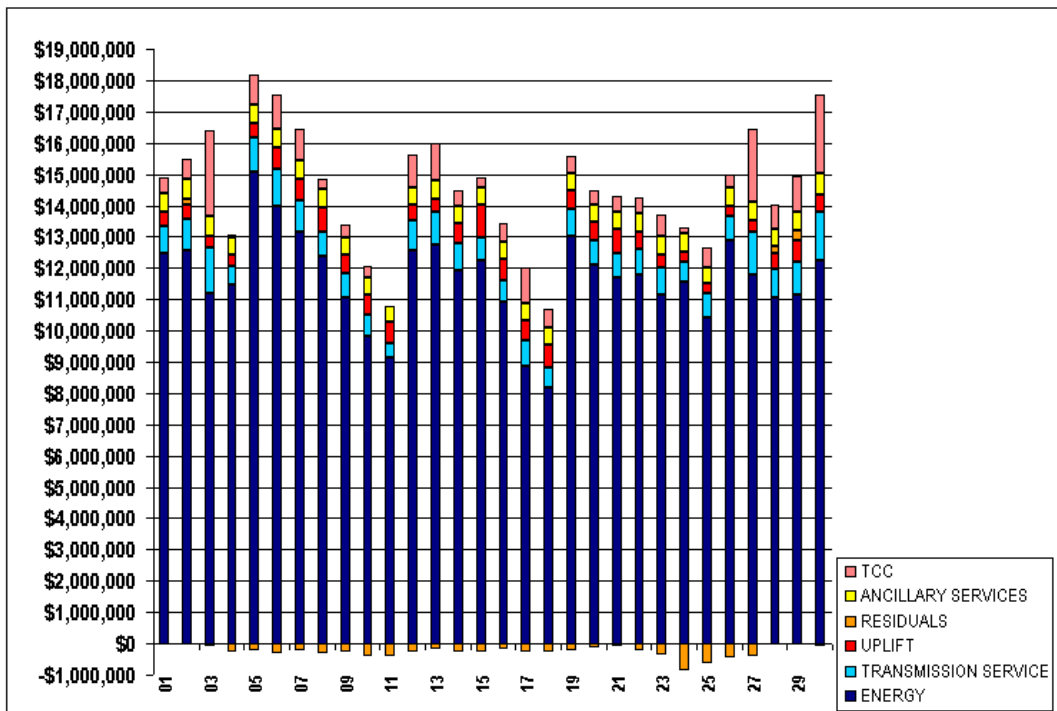
	MONDAY	TUESDAY	WEDNESDAY	THURSDAY	FRIDAY	SATURDAY	SUNDAY
			1	2	3	4	5
DAM NYCA			366,912	361,542	363,303	329,299	306,712
DAM NON-NYCA			47,141	51,449	44,189	49,201	53,466
DAM WHEELS			1,900	1,275	2,875	0	0
DAM VIRTUAL			73,744	77,883	97,010	70,437	76,948
BALANCING NYCA			21,428	42,721	26,637	25,354	37,870
BALANCING NON-NYCA			16,688	8,092	23,289	16,967	7,832
BALANCING WHEELS			1,400	1,203	(1,575)	864	891
BALANCING VIRTUAL			(73,744)	(77,883)	(97,010)	(70,437)	(76,948)
	6	7	8	9	10	11	12
DAM NYCA	363,392	370,437	377,464	397,528	383,021	342,366	336,006
DAM NON-NYCA	46,154	42,771	42,786	38,312	48,383	54,896	56,627
DAM WHEELS	1,275	1,275	1,275	1,275	7,675	0	0
DAM VIRTUAL	81,644	71,801	71,983	68,981	71,634	65,940	66,447
BALANCING NYCA	54,231	39,217	22,792	14,040	29,695	24,658	31,922
BALANCING NON-NYCA	9,480	17,696	11,846	16,499	3,247	4,698	7,402
BALANCING WHEELS	909	(724)	(978)	1,525	(2,303)	335	650
BALANCING VIRTUAL	(81,644)	(71,801)	(71,983)	(68,981)	(71,634)	(65,940)	(66,447)
	13	14	15	16	17	18	19
DAM NYCA	387,794	412,517	407,845	387,342	379,799	344,653	338,631
DAM NON-NYCA	50,678	41,062	41,195	51,919	51,414	58,013	58,730
DAM WHEELS	1,275	1,275	1,275	1,700	2,900	1,600	1,600
DAM VIRTUAL	75,368	74,273	81,042	72,090	74,026	60,791	58,178
BALANCING NYCA	18,789	19,955	36,869	36,828	34,446	29,207	34,437
BALANCING NON-NYCA	9,843	8,789	8,847	6,230	14,611	18,269	16,063
BALANCING WHEELS	(937)	(725)	(1,017)	(1,294)	(2,344)	1,157	400
BALANCING VIRTUAL	(75,368)	(74,273)	(81,042)	(72,090)	(74,026)	(60,791)	(58,178)
	20	21	22	23	24	25	26
DAM NYCA	408,912	408,160	392,078	389,861	367,494	340,359	362,270
DAM NON-NYCA	32,310	36,664	47,189	41,955	44,799	50,933	46,633
DAM WHEELS	1,700	1,700	1,700	3,100	4,700	1,600	1,600
DAM VIRTUAL	75,920	70,403	71,716	73,300	73,717	58,147	55,823
BALANCING NYCA	71,777	55,718	30,692	13,213	12,239	21,907	23,554
BALANCING NON-NYCA	6,126	13,092	16,491	29,614	18,556	14,744	12,888
BALANCING WHEELS	(1,700)	(925)	(810)	(1,904)	(2,050)	(350)	(39)
BALANCING VIRTUAL	(75,920)	(70,403)	(71,716)	(73,300)	(73,717)	(58,147)	(55,823)
	27	28	29	30	31		
DAM NYCA	385,512	385,470	376,359	372,477	347,430		
DAM NON-NYCA	59,505	57,913	56,759	60,536	63,293		
DAM WHEELS	3,300	3,300	4,475	3,200	3,200		
DAM VIRTUAL	67,160	68,940	69,108	51,942	49,980		
BALANCING NYCA	28,450	39,677	29,143	15,099	19,593		
BALANCING NON-NYCA	13,687	14,839	15,079	6,749	931		
BALANCING WHEELS	(1,870)	(2,556)	(1,275)	(7)	77		
BALANCING VIRTUAL	(67,160)	(68,940)	(69,108)	(51,942)	(49,980)		



**SETTLEMENTS REPORT
BILLING AND ACCOUNTING WORKING GROUP MEETING
MAY 19, 2005**

ATTACHMENT I: APRIL 2004 MARKET COSTS

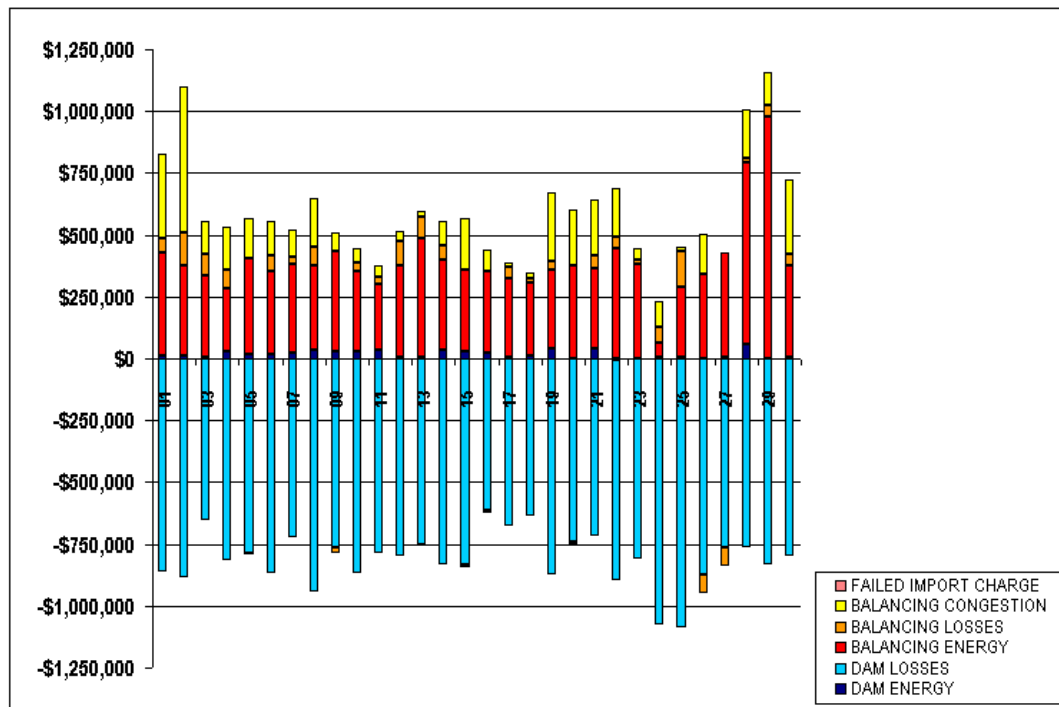
	MONDAY	TUESDAY	WEDNESDAY	THURSDAY	FRIDAY	SATURDAY	SUNDAY
				1	2	3	4
ENERGY				\$12,460,768.64	\$12,567,438.16	\$11,212,200.09	\$11,475,425.69
TRANSMISSION SERVICE				\$875,732.83	\$996,391.40	\$1,420,826.87	\$583,743.76
UPLIFT				\$456,969.95	\$447,794.77	\$387,144.05	\$379,624.35
RESIDUALS				(\$30,821.84)	\$208,963.65	(\$94,736.43)	(\$286,983.04)
ANCILLARY SERVICES				\$595,960.36	\$608,983.25	\$617,071.94	\$514,380.49
TCC				\$605,536.80	\$637,281.32	\$2,768,642.34	\$90,494.53
	5	6	7	8	9	10	11
ENERGY	\$15,094,889.28	\$13,957,272.99	\$13,145,699.79	\$12,381,336.80	\$11,050,591.19	\$9,844,397.86	\$9,138,560.16
TRANSMISSION SERVICE	\$1,056,048.11	\$1,201,237.34	\$1,031,277.70	\$771,606.50	\$760,008.81	\$663,092.28	\$468,761.54
UPLIFT	\$494,840.88	\$696,368.47	\$656,743.71	\$787,164.58	\$612,797.89	\$641,209.45	\$675,111.86
RESIDUALS	(\$223,945.76)	(\$311,015.20)	(\$202,803.27)	(\$295,123.60)	(\$273,505.45)	(\$423,270.82)	(\$407,151.96)
ANCILLARY SERVICES	\$573,620.64	\$584,284.06	\$598,038.00	\$582,118.89	\$545,857.20	\$523,149.90	\$494,215.76
TCC	\$957,151.02	\$1,094,385.37	\$1,021,792.61	\$308,993.34	\$407,212.36	\$364,778.84	\$14,604.96
	12	13	14	15	16	17	18
ENERGY	\$12,555,659.58	\$12,755,769.88	\$11,910,024.72	\$12,222,875.84	\$10,903,225.88	\$8,855,977.57	\$8,196,189.34
TRANSMISSION SERVICE	\$986,679.02	\$1,046,718.47	\$884,070.84	\$748,794.22	\$705,412.15	\$845,652.54	\$628,613.59
UPLIFT	\$459,636.58	\$399,608.89	\$615,418.89	\$1,042,472.74	\$695,501.34	\$633,467.51	\$743,535.60
RESIDUALS	(\$286,741.11)	(\$157,314.49)	(\$278,850.42)	(\$279,518.36)	(\$181,093.42)	(\$285,746.38)	(\$288,534.82)
ANCILLARY SERVICES	\$576,377.24	\$592,324.62	\$580,402.34	\$558,309.76	\$551,732.09	\$528,044.72	\$507,923.91
TCC	\$1,046,379.00	\$1,200,923.00	\$506,165.89	\$320,699.23	\$556,635.91	\$1,172,523.13	\$626,368.97
	19	20	21	22	23	24	25
ENERGY	\$13,038,986.76	\$12,085,800.73	\$11,673,668.24	\$11,783,776.13	\$11,155,573.71	\$11,540,334.10	\$10,398,487.62
TRANSMISSION SERVICE	\$856,981.72	\$779,346.00	\$778,572.94	\$839,893.15	\$848,291.83	\$643,258.09	\$770,844.33
UPLIFT	\$565,967.20	\$622,986.35	\$814,054.14	\$533,569.18	\$441,185.14	\$352,890.00	\$344,699.61
RESIDUALS	(\$203,776.98)	(\$150,572.21)	(\$74,238.32)	(\$210,675.88)	(\$367,237.59)	(\$845,889.83)	(\$638,491.71)
ANCILLARY SERVICES	\$555,012.04	\$554,245.44	\$547,439.32	\$581,741.37	\$558,754.07	\$583,050.46	\$513,386.66
TCC	\$579,295.28	\$453,891.72	\$462,997.49	\$510,133.85	\$691,720.77	\$170,134.47	\$644,830.88
	26	27	28	29	30		
ENERGY	\$12,887,430.64	\$11,801,008.96	\$11,048,281.57	\$11,148,450.65	\$12,234,415.69		
TRANSMISSION SERVICE	\$766,417.79	\$1,372,871.22	\$930,042.76	\$1,055,077.71	\$1,562,532.53		
UPLIFT	\$344,054.11	\$350,289.79	\$475,333.06	\$671,223.35	\$541,725.06		
RESIDUALS	(\$445,104.37)	(\$405,516.81)	\$245,050.90	\$325,930.08	(\$78,779.75)		
ANCILLARY SERVICES	\$551,948.37	\$604,183.96	\$551,244.79	\$575,013.89	\$669,104.82		
TCC	\$445,569.84	\$2,291,872.74	\$764,201.43	\$1,178,076.73	\$2,546,844.81		



SETTLEMENTS REPORT
BILLING AND ACCOUNTING WORKING GROUP MEETING
MAY 19, 2005

ATTACHMENT J: APRIL 2004 MARKET RESIDUALS

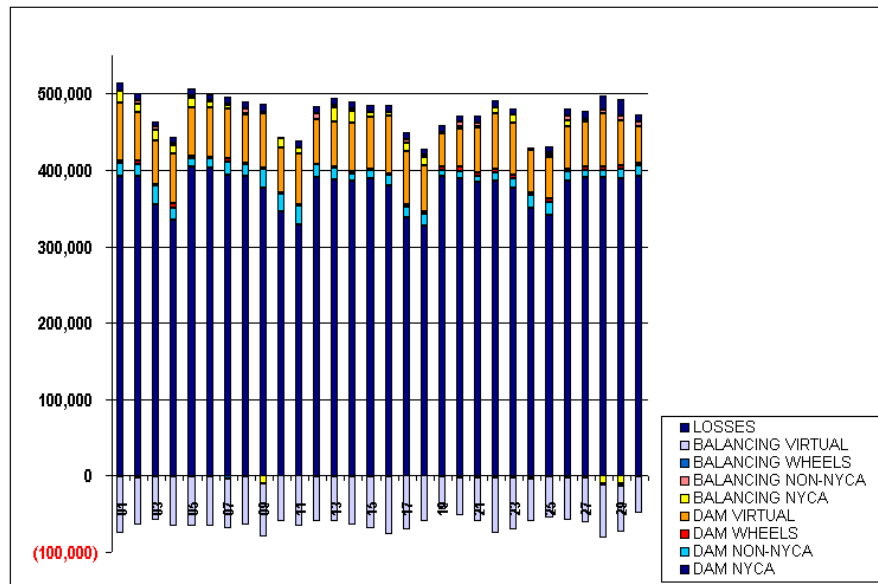
	MONDAY	TUESDAY	WEDNESDAY	THURSDAY	FRIDAY	SATURDAY	SUNDAY
DAM ENERGY				1	2	3	4
DAM LOSSES				\$12,367.92	\$9,687.87	\$6,316.42	\$27,063.62
BALANCING ENERGY				(\$859,728.84)	(\$888,162.31)	(\$652,441.76)	(\$818,273.99)
BALANCING LOSSES				\$415,853.87	\$367,773.96	\$326,902.62	\$255,157.39
BALANCING CONGESTION				\$56,010.16	\$132,493.82	\$87,111.63	\$75,379.38
FAILED IMPORT CHARGE				\$344,675.05	\$587,170.31	\$137,374.66	\$173,690.56
				\$0.00	\$0.00	\$0.00	\$0.00
DAM ENERGY	5	6	7	8	9	10	11
DAM LOSSES	\$14,642.72	\$16,604.22	\$24,378.68	\$32,547.20	\$30,923.93	\$27,086.88	\$34,729.92
BALANCING ENERGY	(\$786,209.35)	(\$869,198.67)	(\$724,243.15)	(\$945,677.25)	(\$761,262.83)	(\$869,064.11)	(\$785,687.87)
BALANCING LOSSES	\$387,955.35	\$334,336.79	\$360,335.68	\$346,321.73	\$404,438.81	\$323,112.61	\$263,702.67
BALANCING CONGESTION	(\$3,889.12)	\$63,108.23	\$27,851.50	\$74,705.36	(\$23,193.60)	\$39,773.74	\$30,362.95
FAILED IMPORT CHARGE	\$163,554.64	\$144,134.23	\$108,874.02	\$196,979.36	\$75,588.24	\$55,820.06	\$49,740.37
	\$0.00	\$0.00	\$0.00	\$0.00	\$0.00	\$0.00	\$0.00
DAM ENERGY	12	13	14	15	16	17	18
DAM LOSSES	\$4,563.30	\$7,760.82	\$36,778.48	\$28,047.71	\$24,100.63	\$4,523.42	\$14,103.29
BALANCING ENERGY	(\$800,440.38)	(\$754,559.22)	(\$834,959.73)	(\$834,415.03)	(\$613,489.30)	(\$675,983.63)	(\$637,359.59)
BALANCING LOSSES	\$373,044.50	\$476,511.22	\$360,783.68	\$332,897.30	\$328,575.03	\$321,650.12	\$291,234.43
BALANCING CONGESTION	\$97,484.26	\$90,976.04	\$57,999.28	(\$11,415.27)	(\$10,037.61)	\$42,289.99	\$21,359.96
FAILED IMPORT CHARGE	\$38,607.21	\$21,996.65	\$100,547.87	\$205,366.93	\$89,757.83	\$21,773.72	\$22,127.09
	\$0.00	\$0.00	\$0.00	\$0.00	\$0.00	\$0.00	\$0.00
DAM ENERGY	19	20	21	22	23	24	25
DAM LOSSES	\$40,688.34	(\$996.41)	\$37,630.35	(\$2,996.79)	\$2,810.29	\$3,227.67	\$4,961.33
BALANCING ENERGY	(\$876,661.01)	(\$741,994.21)	(\$717,830.57)	(\$896,572.79)	(\$811,176.35)	(\$1,076,095.81)	(\$1,089,390.40)
BALANCING LOSSES	\$315,731.06	\$378,524.43	\$325,785.84	\$448,357.03	\$378,686.73	\$62,763.85	\$282,862.35
BALANCING CONGESTION	\$38,598.84	(\$8,136.46)	\$50,430.21	\$42,885.08	\$16,843.15	\$63,346.86	\$143,652.08
FAILED IMPORT CHARGE	\$277,865.79	\$222,030.44	\$229,745.85	\$197,651.59	\$45,598.59	\$100,867.60	\$19,422.93
	\$0.00	\$0.00	\$0.00	\$0.00	\$0.00	\$0.00	\$0.00
DAM ENERGY	26	27	28	29	30		
DAM LOSSES	(\$1,889.82)	\$3,902.41	\$59,887.56	\$737.07	\$4,501.85		
BALANCING ENERGY	(\$874,062.97)	(\$761,423.18)	(\$763,390.74)	(\$832,313.91)	(\$799,793.54)		
BALANCING LOSSES	\$340,227.02	\$423,634.25	\$734,626.28	\$977,731.49	\$372,799.26		
BALANCING CONGESTION	(\$72,392.61)	(\$74,846.91)	\$16,513.12	\$45,677.11	\$43,881.42		
FAILED IMPORT CHARGE	\$163,014.01	\$3,216.82	\$197,414.68	\$134,098.32	\$299,831.26		
	\$0.00	\$0.00	\$0.00	\$0.00	\$0.00		



SETTLEMENTS REPORT
BILLING AND ACCOUNTING WORKING GROUP MEETING
MAY 19, 2005

ATTACHMENT K: APRIL 2004 WITHDRAWALS

	MONDAY	TUESDAY	WEDNESDAY	THURSDAY	FRIDAY	SATURDAY	SUNDAY
				1	2	3	4
DAM NYCA				392,418	392,685	366,077	336,512
DAM NON-NYCA				17,365	15,256	24,159	15,535
DAM WHEELS				2,796	4,198	2,720	5,020
DAM VIRTUAL				75,125	62,850	56,853	65,220
BALANCING NYCA				16,253	11,435	13,895	11,075
BALANCING NON-NYCA				(129)	5,289	3,754	3,829
BALANCING WHEELS				(664)	(1,971)	(948)	(605)
BALANCING VIRTUAL				(75,125)	(62,850)	(66,853)	(65,220)
LOSSES				9,800	8,498	7,295	7,381
	5	6	7	8	9	10	11
DAM NYCA	404,059	402,249	393,711	392,275	377,317	345,361	328,460
DAM NON-NYCA	11,187	13,331	17,638	15,217	24,808	22,954	25,283
DAM WHEELS	2,505	1,699	4,632	2,218	1,520	1,520	1,520
DAM VIRTUAL	64,367	65,359	64,636	63,362	70,053	59,105	65,528
BALANCING NYCA	11,956	6,379	4,805	642	(9,994)	13,294	8,311
BALANCING NON-NYCA	4,062	1,969	1,506	6,010	1,561	683	443
BALANCING WHEELS	(1,097)	(1,114)	(3,687)	(1,707)	440	559	(65)
BALANCING VIRTUAL	(64,367)	(65,359)	(64,636)	(63,362)	(70,053)	(59,105)	(65,528)
LOSSES	9,134	8,468	9,423	9,700	11,362	(1,342)	8,708
	12	13	14	15	16	17	18
DAM NYCA	390,336	397,341	396,033	388,673	379,703	338,042	327,370
DAM NON-NYCA	16,924	16,020	9,419	11,616	13,338	14,142	15,671
DAM WHEELS	850	850	2,400	1,700	1,700	2,400	2,400
DAM VIRTUAL	58,805	58,591	63,940	67,920	75,620	70,645	60,126
BALANCING NYCA	(825)	19,398	14,878	5,228	5,689	10,535	11,424
BALANCING NON-NYCA	7,873	3,080	3,740	(171)	(840)	4,703	2,798
BALANCING WHEELS	(850)	(850)	(1,200)	(586)	(825)	109	0
BALANCING VIRTUAL	(58,805)	(58,591)	(63,940)	(67,920)	(75,620)	(70,645)	(60,126)
LOSSES	8,962	9,535	9,448	9,392	8,978	8,154	7,330
	19	20	21	22	23	24	25
DAM NYCA	391,621	389,770	384,003	386,600	376,890	349,695	341,245
DAM NON-NYCA	8,872	8,225	8,469	10,590	11,673	18,332	16,228
DAM WHEELS	4,100	5,900	4,900	4,900	4,900	1,790	4,720
DAM VIRTUAL	42,637	60,678	57,580	71,847	68,619	55,672	54,991
BALANCING NYCA	112	2,072	2,800	8,098	9,779	(2,863)	3,041
BALANCING NON-NYCA	2,496	5,974	4,176	(412)	(1,364)	1,199	3,093
BALANCING WHEELS	(1,572)	(1,733)	(1,958)	(2,535)	(900)	(840)	(505)
BALANCING VIRTUAL	(42,637)	(60,678)	(57,580)	(71,847)	(68,619)	(55,672)	(54,991)
LOSSES	8,624	9,140	9,161	8,903	8,250	3,116	6,939
	26	27	28	29	30		
DAM NYCA	385,270	390,272	390,163	389,503	391,763		
DAM NON-NYCA	12,725	10,175	9,989	11,553	13,728		
DAM WHEELS	4,000	4,000	4,620	4,317	3,684		
DAM VIRTUAL	55,345	58,165	68,903	60,190	47,770		
BALANCING NYCA	7,248	(345)	(10,965)	(10,968)	(494)		
BALANCING NON-NYCA	6,364	3,950	5,667	5,893	6,576		
BALANCING WHEELS	(3,011)	(2,262)	(1,077)	(1,964)	(1,075)		
BALANCING VIRTUAL	(55,345)	(58,165)	(68,903)	(60,190)	(47,770)		
LOSSES	8,497	10,093	18,286	21,120	8,720		



**SETTLEMENTS REPORT
BILLING AND ACCOUNTING WORKING GROUP MEETING
MAY 19, 2005**

ATTACHMENT L: APRIL 2004 SUPPLY

	MONDAY	TUESDAY	WEDNESDAY	THURSDAY	FRIDAY	SATURDAY	SUNDAY
				1	2	3	4
DAM NYCA				367,962	369,670	321,210	311,536
DAM NON-NYCA				45,061	34,806	47,010	40,802
DAM WHEELS				2,795	4,198	2,720	5,020
DAM VIRTUAL				72,224	66,551	68,019	64,435
BALANCING NYCA				32,875	19,162	30,882	18,745
BALANCING NON-NYCA				(10,146)	9,548	5,113	2,279
BALANCING WHEELS				(664)	(1,971)	(948)	(605)
BALANCING VIRTUAL				(72,224)	(66,551)	(68,019)	(64,435)
	5	6	7	8	9	10	11
DAM NYCA	383,363	376,314	363,809	354,202	341,562	306,492	288,180
DAM NON-NYCA	31,000	36,262	44,679	53,946	55,094	57,940	68,640
DAM WHEELS	2,505	1,699	4,632	2,218	1,520	1,520	1,520
DAM VIRTUAL	66,560	68,698	68,303	63,385	76,315	63,795	63,379
BALANCING NYCA	21,588	15,986	17,329	14,667	(2,056)	6,005	9,338
BALANCING NON-NYCA	4,472	3,928	1,302	1,039	10,544	10,633	5,577
BALANCING WHEELS	(1,097)	(1,114)	(3,687)	(1,707)	440	559	(65)
BALANCING VIRTUAL	(65,560)	(68,698)	(68,303)	(63,385)	(76,315)	(63,795)	(63,379)
	12	13	14	15	16	17	18
DAM NYCA	344,302	349,266	348,768	350,763	341,444	286,300	281,801
DAM NON-NYCA	53,184	46,005	42,329	47,595	48,947	64,750	56,740
DAM WHEELS	850	850	2,400	1,700	1,700	2,400	2,400
DAM VIRTUAL	68,900	66,873	69,120	70,509	78,859	71,911	65,108
BALANCING NYCA	26,475	36,474	22,066	13,366	19,682	27,574	18,229
BALANCING NON-NYCA	(672)	3,839	10,476	3,124	(3,245)	(2,880)	7,919
BALANCING WHEELS	(850)	(850)	(1,200)	(586)	(825)	109	0
BALANCING VIRTUAL	(68,900)	(66,873)	(69,120)	(70,509)	(78,859)	(71,911)	(65,108)
	19	20	21	22	23	24	25
DAM NYCA	353,874	348,324	344,574	340,142	328,126	304,406	277,285
DAM NON-NYCA	35,650	39,240	42,474	52,247	49,338	58,456	75,415
DAM WHEELS	4,100	5,900	4,900	4,900	4,900	1,790	4,720
DAM VIRTUAL	54,685	61,342	64,121	76,826	80,034	60,897	59,875
BALANCING NYCA	12,278	15,175	20,013	26,950	25,134	(1,325)	17,926
BALANCING NON-NYCA	10,163	12,503	1,793	(5,482)	2,725	8,057	30
BALANCING WHEELS	(1,572)	(1,733)	(1,958)	(2,535)	(900)	(840)	(505)
BALANCING VIRTUAL	(54,685)	(61,342)	(64,121)	(76,826)	(80,034)	(60,897)	(59,875)
	26	27	28	29	30		
DAM NYCA	322,368	353,488	358,047	353,909	351,163		
DAM NON-NYCA	59,233	40,190	39,540	40,600	39,734		
DAM WHEELS	4,000	4,000	4,620	4,317	3,684		
DAM VIRTUAL	72,453	65,324	73,326	66,757	62,533		
BALANCING NYCA	38,551	10,967	9,310	11,934	11,567		
BALANCING NON-NYCA	263	9,721	6,113	10,699	17,892		
BALANCING WHEELS	(3,011)	(2,262)	(1,077)	(1,964)	(1,075)		
BALANCING VIRTUAL	(72,453)	(65,324)	(73,326)	(66,757)	(62,533)		

