

Memo



To: Generation Suppliers who would like to participate in the NYISO Station Power Settlement Process

From: NYISO

Date: 5/19/2005

Re: Station Power Diagrams

Urgent: Please provide no later than 3/6/03 to ensure modeling is complete by April 1st

The NYISO would like to request the following information to determine:

- The correct modeling requirements for each plant/site
 - The identification of each plant/site metering configuration
1. Identify the corporate affiliation of each generation facility and the associated billing organization as defined in the Market Information System (MIS)
 2. Identify all generation facilities at a location that will be bid and measured as an aggregate for actual station power service, each individual facility should align with those that are currently bid for power supply
 3. When unit(s) is providing energy to the network is all station power provided internal to the station?
 - Yes
 - If No, please provide additional details
 4. For each generation facility provide a diagram similar to the examples provided below (the provided diagrams are for illustration purposes only – your station diagrams are preferred)
 5. Identify on the diagram the billing quality meters providing station power service to the generation facilities, it will be assumed that the total of the meters identified will be the actual station power consumed on an hourly basis for each generating facility or group of facilities
 6. List the identifications stated in question number 2 and 5 above in the attached table of Electric Accounts
 7. Provide any additional information with respect to the provision of station power that you feel may require special consideration or additional definition of metering requirements

i.e. station power metering is shared between two units under different corporate entities

If you have any questions please contact us via e-mail at market_relations@nyiso.com or at the Customer Relations Help Desk at (518-356-6060)

Best Regards

Station Service Configurations

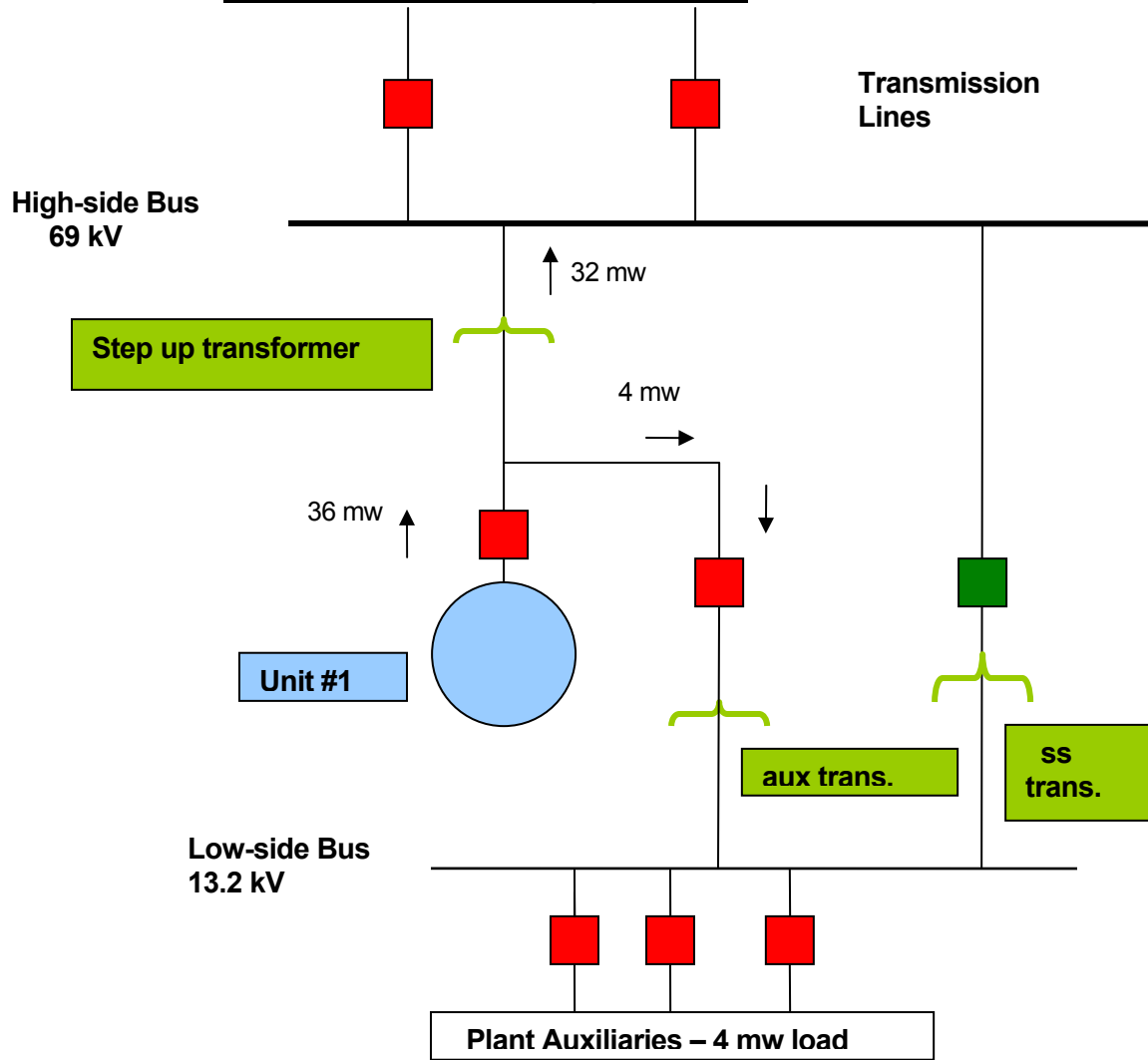


Figure 1 – Self Supply

When the generator is on line, it self supplies the plant auxiliaries off the low side, 13.2 kV bus, through the auxiliary transformer

For illustration purposes only

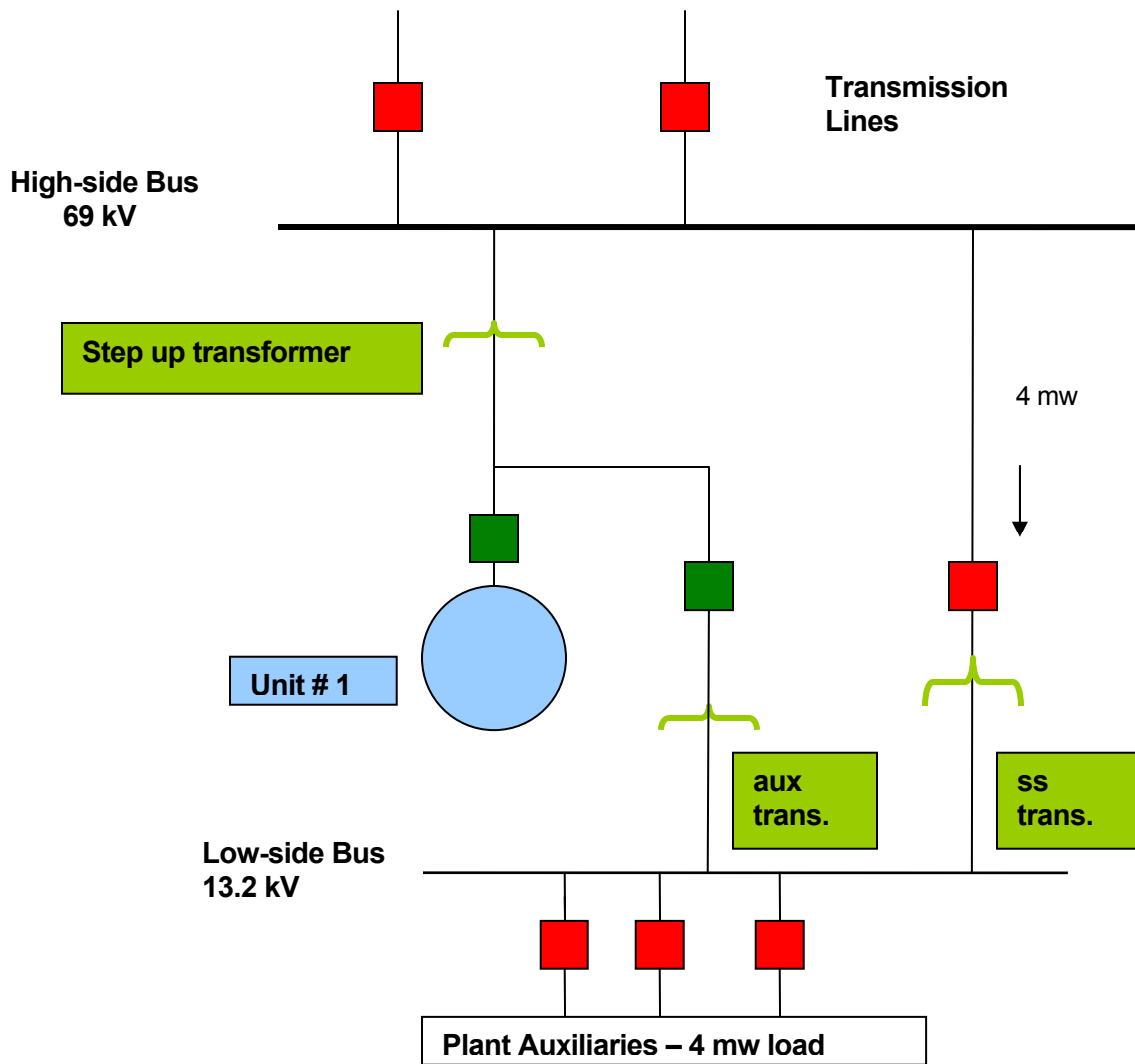


Figure 2 – off system

When the generator is off line, the plant auxiliaries are fed from the system through the station service transformer. In this example the feed is from the 69 kv bus. It could also come from a distribution line.

For illustration purposes only

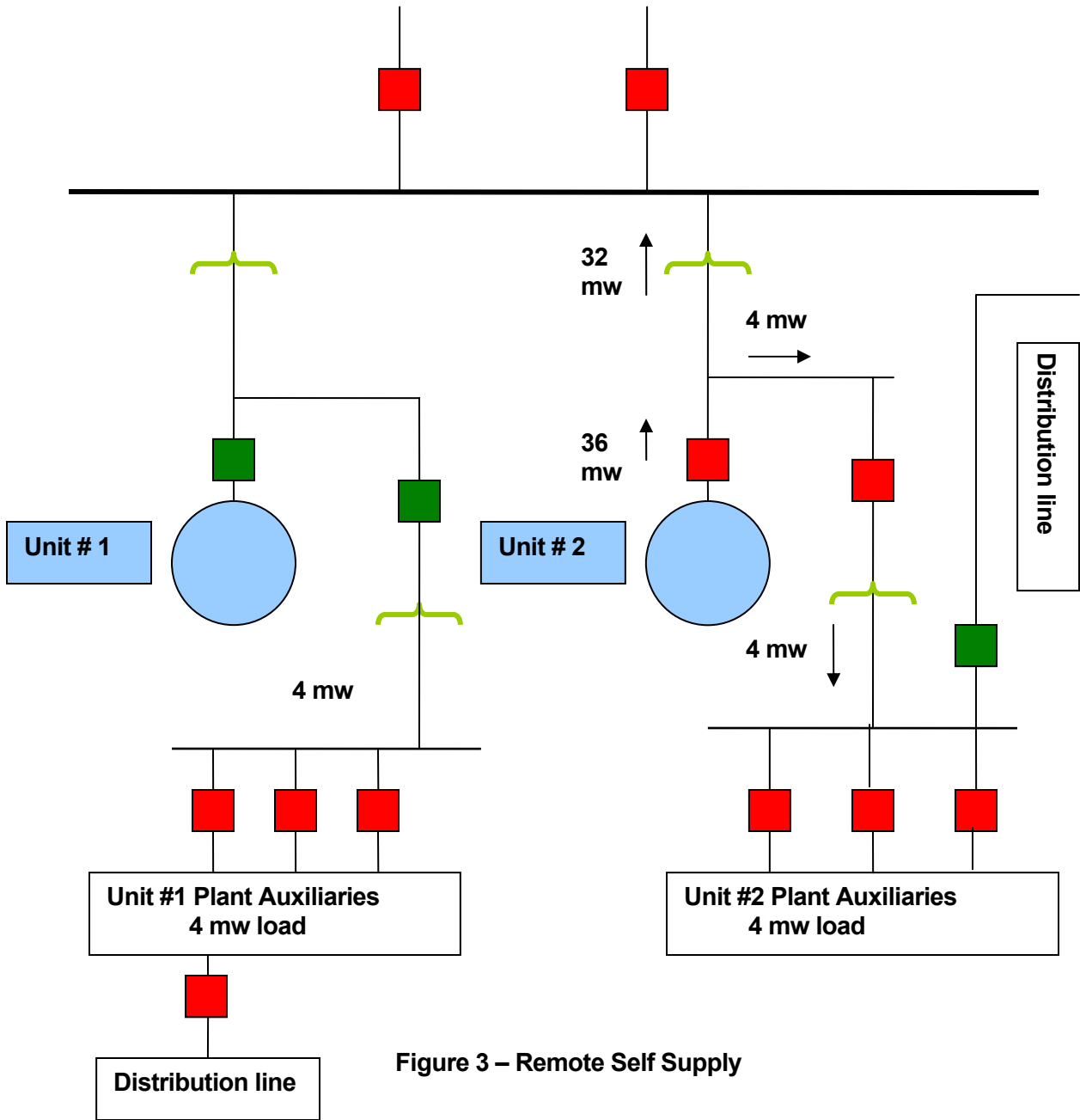


Figure 3 – Remote Self Supply

When unit #1 is off line, Unit 2 feeds both its own 4 mw plant load plus unit 1's 4 mw plant load. The feed in this example is through Unit #2's auxiliary transformer and across the bus tie.

Note that there is a distribution line backup feed in case both units are off line.

For illustration purposes only

Electric Accounts

Please list meters whose reading(s) will be used for the determination of station power service. The GENLSE item shown in column 1 will actually be named by NYISO but, for purposes of identifying generator station power we need for you to identify the remaining columns with the information that will be bid and settled as one point for reporting load.

Identify the individual generators as illustrated below:

GENLSE_1	GEN PTID	GEN Name	Meter Authority	Account #	Meter #	Description
	12345	GENX1	DMP01	xxxxx	yyyyyy	zzzzzzzz
				aaaaaa	bbbbbb	ccccccc
				dddddd	eeeeee	fffffff
	12001	GENY2	DMP01	ggggg	hhhhh	iiiiiii
				jjjjjj	kkkkk	lllllll
				mmmm	nnnnn	ooooo
GENLSE_2	22222	GENE3	DMP02	ppppp	ssssss	ttttttt
				qqqqqq	rrrrr	uuuuu

This spreadsheet should include all generators that you currently bid as identified in the Market Information System (MIS).