
NYISO President's Report

Management Committee Meeting
February 20, 2003

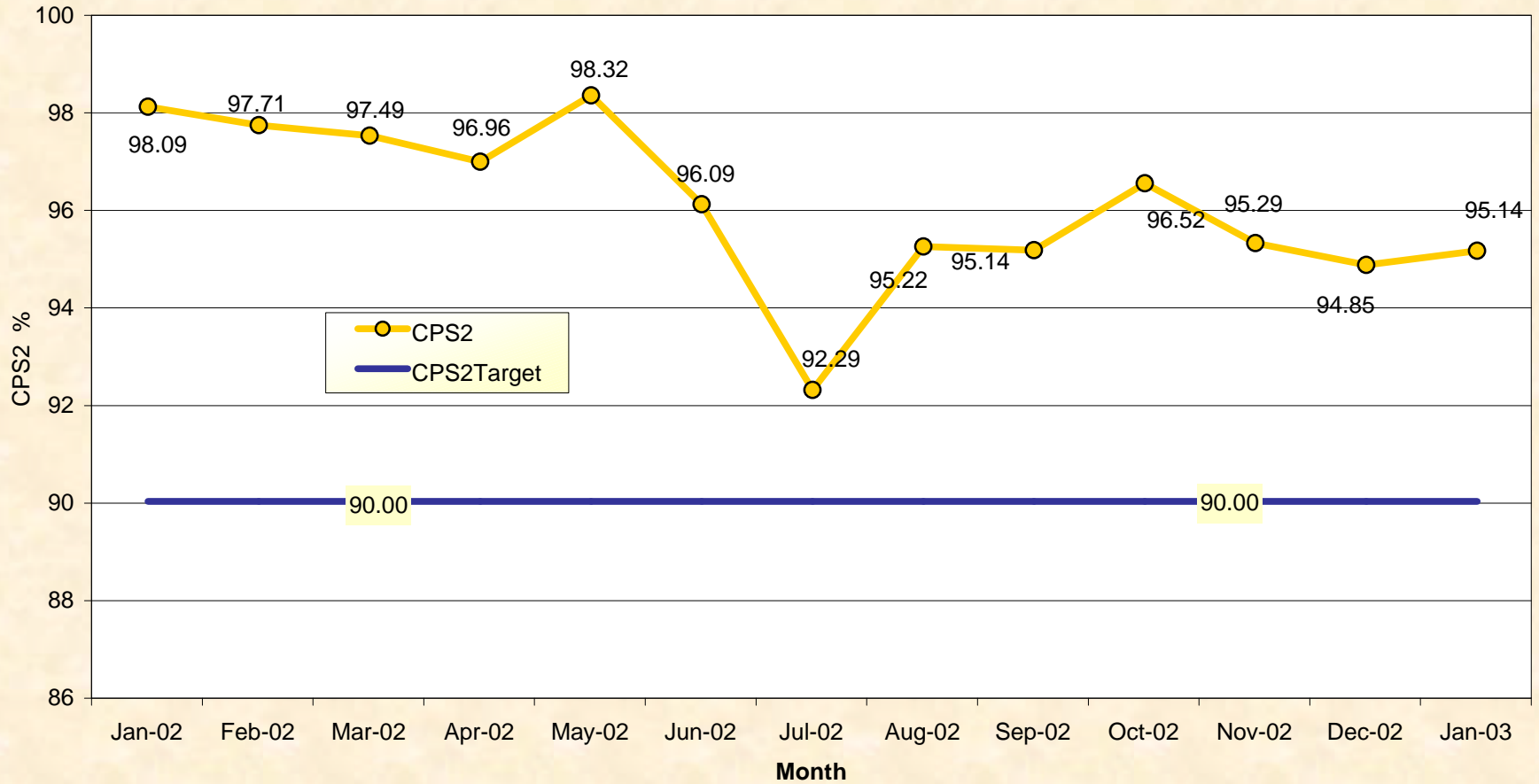
Agenda #4

Report Items

1. Reliability Indicators
 - *NERC Criteria (CPS-2 Curve)*
2. Market Performance Highlights
3. ABB Status
4. Board Process Regarding Demand Curve
5. ISO/RTO Council Formed

NERC Control Performance Standard

NYISO Compliance
Year 2002/2003



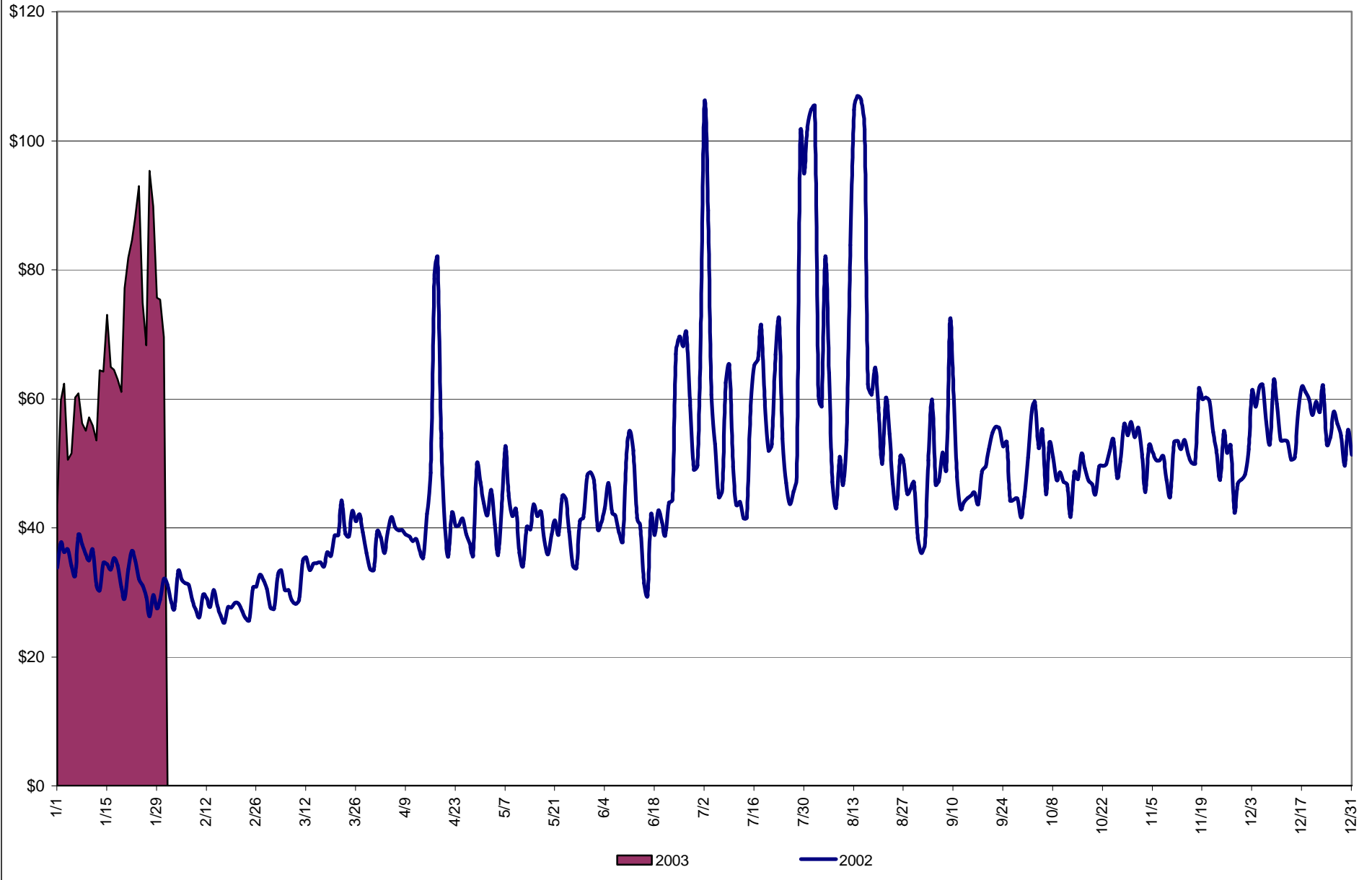
CPS2 for January = 95.14% Compliance Threshold = 90%
CPS2 measures excessive unscheduled power flow resulting from large Area Control Error (ACE)

January 2003

NYISO Market Performance Highlights

- Aggregated Market Prices rose 20% between December 2002 and January 2003
- Price increases attributed to a 47% increase in natural gas prices since December 2002
- Prices for 10 minute spinning reserves and regulation increased 3% and 2% respectively
- Uplift costs remain low
- Price reservations rose in January due to technical problems which have since been resolved. Price correction rates remain low
 - Price reservation screens now track fuel price changes
 - Data transmittal problems resolved

Average Daily NYISO - Administered Total Price (Energy & Ancillary Services)
2002 Annual Average \$49.77/MWH
January 2002 Average \$33.39/MWH
January 2003 Average \$68.86/MWH



**NYISO Administered Total Price (Energy and Ancillary Services)
from the LBMP Customer point of view**

2003		January	February	March	April	May	June	July	August	September	October	November	December
	LBMP	66.36											
	NTAC	0.41											
	Reserve	0.48											
	Regulation	0.26											
	NYISO Cost of Operations	0.68											
	Uplift	0.34											
	Voltage Support and Black Start	0.33											
	Avg Monthly Price	68.86											
	Avg YTD Price	68.86											
2002		January	February	March	April	May	June	July	August	September	October	November	December
	LBMP	30.32	26.58	32.02	39.03	37.48	45.59	60.80	65.60	46.88	48.07	50.05	54.73
	NTAC	0.53	0.48	0.45	0.43	0.47	0.61	1.04	0.52	0.49	0.63	0.39	0.35
	Reserve	0.19	0.19	0.24	0.29	0.21	0.19	0.30	0.33	0.22	0.22	0.31	0.41
	Regulation	0.19	0.19	0.17	0.16	0.26	0.24	0.18	0.20	0.27	0.26	0.25	0.25
	NYISO Cost of Operations	0.63	0.63	0.63	0.63	0.63	0.63	0.63	0.63	0.63	0.63	0.62	0.63
	Uplift	1.19	0.67	1.36	3.70	2.34	1.35	2.28	1.32	0.86	0.74	0.23	(0.08)
	Voltage Support and Black Start	0.34	0.33	0.33	0.34	0.34	0.33	0.33	0.33	0.33	0.33	0.33	0.33
	Avg Monthly Price	33.39	29.08	35.21	44.58	41.72	48.94	65.56	68.94	49.68	50.88	52.19	56.63
	Avg YTD Price	33.39	31.37	32.69	35.71	36.83	39.06	44.35	48.39	48.54	48.77	49.09	49.77
2001		January	February	March	April	May	June	July	August	September	October	November	December
	LBMP	61.52	44.29	49.98	48.60	52.84	50.31	46.58	71.97	35.33	31.05	31.53	29.23
	NTAC	0.39	0.21	0.59	0.35	0.51	0.41	0.30	0.35	0.38	0.39	0.40	0.61
	Reserve	0.47	0.29	0.42	0.43	0.59	0.44	0.55	1.40	0.43	0.25	0.27	0.25
	Regulation	0.07	0.07	0.10	0.10	0.13	0.08	0.08	0.06	0.14	0.18	0.15	0.18
	NYISO Cost of Operations	0.65	0.59	0.89	0.89	0.88	0.88	0.88	0.88	0.88	0.83	0.88	0.88
	Uplift	2.62	2.85	0.88	2.04	2.98	3.12	3.71	4.27	0.67	0.54	0.52	0.94
	Voltage Support and Black Start	0.34	0.34	0.34	0.34	0.33	0.33	0.33	0.33	0.33	0.33	0.33	0.33
	Avg Monthly Price	66.05	48.64	53.20	52.75	58.27	55.58	52.44	79.28	38.17	33.57	34.10	32.44
	Avg YTD Price	66.05	58.08	56.55	55.72	56.21	56.09	55.41	59.68	57.12	54.63	52.99	51.42
2000		January	February	March	April	May	June	July	August	September	October	November	December
	LBMP	46.01	41.33	32.62	32.05	50.39	79.35	51.46	63.48	54.29	53.84	52.16	62.85
	NTAC	0.47	0.20	0.25	0.65	0.60	0.46	0.39	0.42	0.22	0.32	0.30	0.20
	Reserve	1.44	5.64	2.68	0.27	0.68	0.66	0.31	0.49	0.64	0.44	0.33	0.37
	Regulation	0.19	0.35	0.42	0.33	0.14	0.01	0.10	0.04	0.07	0.09	0.08	0.07
	NYISO Cost of Operations	1.14	(0.46)	(0.61)	0.47	0.76	0.89	0.88	1.81	1.89	0.43	0.48	0.49
	Uplift	0.16	0.05	(0.29)	0.27	3.37	3.31	1.13	3.80	2.85	0.96	0.38	3.70
	Voltage Support and Black Start	0.38	0.37	0.37	0.37	0.38	0.38	0.38	0.37	0.39	0.40	0.40	0.40
	Avg Monthly Price	49.78	47.49	35.45	34.40	56.33	85.06	54.64	70.43	60.36	56.48	54.13	68.07
	Avg YTD Price	49.78	48.70	44.05	41.62	45.14	53.74	53.91	56.57	57.09	57.02	56.75	57.90

NYISO Markets 2003 Energy Statistics

	January	February	March	April	May	June	July	August	September	October	November	December
<u>DAY AHEAD LBMP</u>												
Unweighted Price	\$61.33											
Standard Deviation	\$20.09											
Load Wtg.Price	\$63.81											
<u>BME * LBMP</u>												
Unweighted Price	\$63.19											
Standard Deviation	\$25.43											
Load Wtg.Price	\$65.54											
<u>REAL TIME LBMP</u>												
Unweighted Price	\$61.53											
Standard Deviation	\$30.16											
Load Wtg.Price	\$64.43											
Average Daily Energy Sendout/Month GWh	457											

NYISO Markets 2002 Energy Statistics

	January	February	March	April	May	June	July	August	September	October	November	December
<u>DAY AHEAD LBMP</u>												
Unweighted Price	\$28.39	\$24.93	\$30.07	\$35.25	\$33.36	\$38.96	\$51.07	\$54.86	\$42.58	\$45.16	\$47.30	\$52.01
Standard Deviation	\$7.26	\$4.61	\$7.28	\$11.57	\$8.76	\$15.32	\$23.15	\$29.88	\$11.72	\$11.61	\$11.72	\$12.28
Load Wtg.Price	\$29.25	\$25.50	\$30.88	\$36.72	\$34.66	\$38.81	\$45.81	\$59.54	\$44.43	\$46.76	\$48.79	\$53.54
<u>BME * LBMP</u>												
Unweighted Price	\$30.66	\$26.84	\$33.53	\$191.03	\$31.43	\$38.57	\$63.19	\$55.27	\$51.96	\$45.90	\$46.53	\$52.44
Standard Deviation	\$11.22	\$7.60	\$13.84	\$1,020.88	\$13.91	\$54.74	\$181.17	\$29.34	\$147.55	\$12.10	\$11.07	\$14.74
Load Wtg.Price	\$31.67	\$27.54	\$34.88	\$233.53	\$33.12	\$38.49	\$54.76	\$59.15	\$55.08	\$47.76	\$47.70	\$53.95
<u>REAL TIME LBMP</u>												
Unweighted Price	\$25.36	\$23.73	\$29.78	\$35.44	\$29.80	\$33.98	\$53.70	\$49.74	\$44.08	\$46.16	\$46.13	\$51.04
Standard Deviation	\$8.27	\$8.83	\$10.97	\$25.85	\$13.32	\$16.92	\$66.25	\$24.86	\$34.24	\$17.61	\$18.25	\$22.41
Load Wtg.Price	\$26.17	\$24.39	\$30.67	\$38.10	\$31.42	\$33.91	\$44.63	\$53.32	\$46.85	\$47.88	\$47.75	\$53.01
Average Daily Energy Sendout/Month GWh	427	418	403	397	388	449	513	511	444	412	413	440

* Commonly referred as Hour Ahead Market (HAM)

NYISO Markets 2003 Transactions

	January	February	March	April	May	June	July	August	September	October	November	December
Transactions by Market												
DAM LSE Internal LBMP Energy Sales	46%											
DAM External TC LBMP Energy Sales	1%											
DAM Bilateral - Internal Bilaterals	50%											
DAM Bilateral - Import/Non-LBMP Market Bilaterals	1%											
DAM Bilateral - Export/Non-LBMP Market Bilaterals	1%											
DAM Bilateral - Wheel Through Bilaterals	1%											
Day Ahead Market	100%											
Balancing Energy LSE Internal LBMP Energy Sales	61%											
Balancing Energy External TC LBMP Energy Sales	54%											
Balancing Energy Bilateral - Internal Bilaterals	-6%											
Balancing Energy Bilateral - Import/Non-LBMP Market Bilaterals	4%											
Balancing Energy Bilateral - Export/Non-LBMP Market Bilaterals	0%											
Balancing Energy Bilateral - Wheel Through Bilaterals	-13%											
Balancing Energy +	100%											
Transactions Summary												
LBMP	49%											
Internal Bilaterals	48%											
Import Bilaterals	1%											
Export Bilaterals	1%											
Wheels Through	1%											
Market Share of Total Load												
Day Ahead Market	97.46%											
Balancing Energy +	2.54%											
Total MWH	14,557,243											

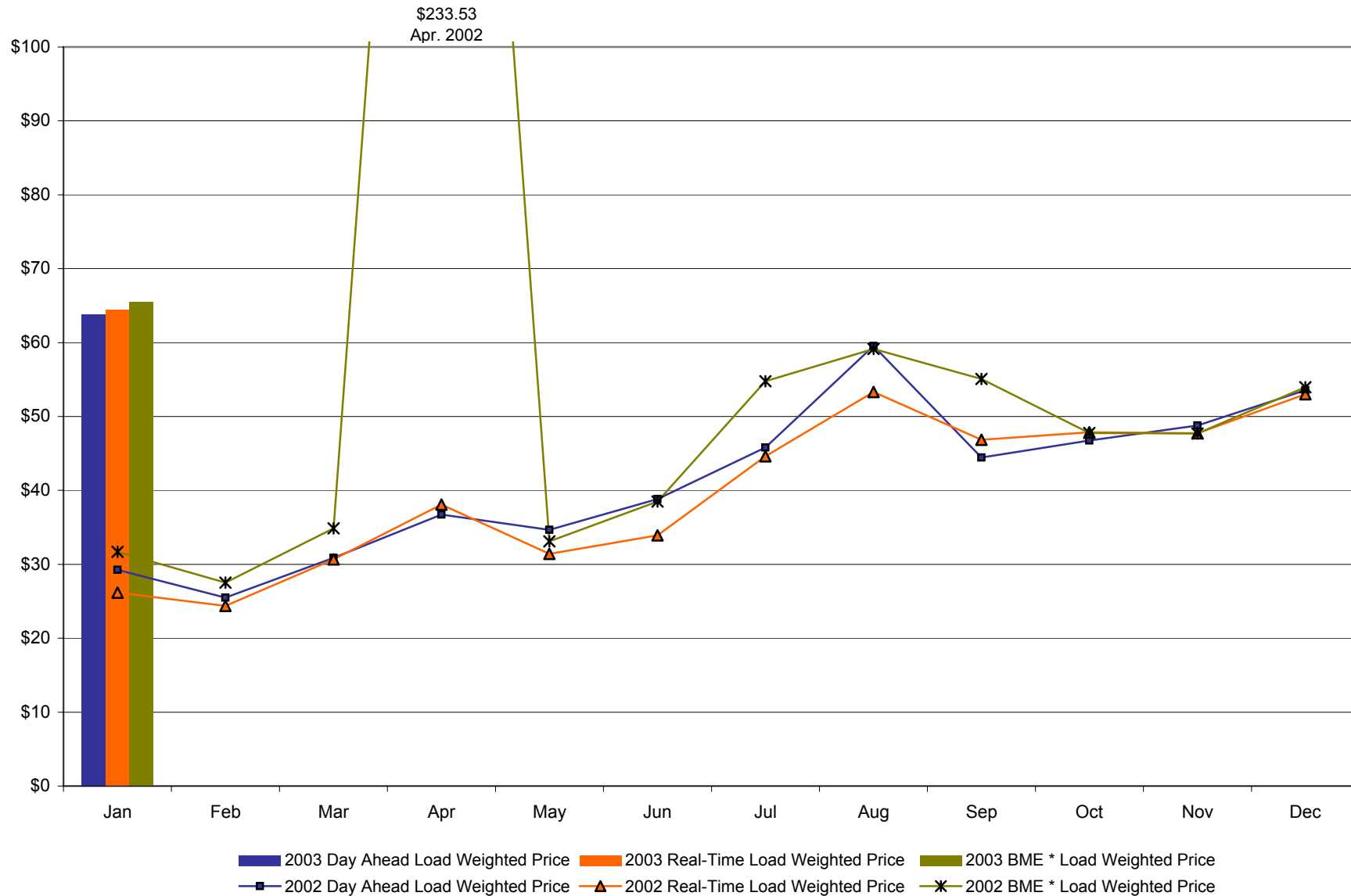
NYISO Markets 2002 Transactions

	January	February	March	April	May	June	July	August	September	October	November	December
Transactions by Market												
DAM LSE Internal LBMP Energy Sales	44%	42%	43%	45%	40%	43%	50%	51%	46%	46%	49%	47%
DAM External TC LBMP Energy Sales	0%	1%	1%	1%	1%	2%	3%	1%	2%	1%	1%	2%
DAM Bilateral - Internal Bilaterals	51%	52%	51%	49%	55%	51%	45%	45%	49%	50%	46%	49%
DAM Bilateral - Import/Non-LBMP Market Bilaterals	1%	1%	1%	0%	0%	0%	0%	0%	0%	0%	0%	1%
DAM Bilateral - Export/Non-LBMP Market Bilaterals	1%	1%	1%	1%	1%	1%	1%	1%	1%	1%	1%	1%
DAM Bilateral - Wheel Through Bilaterals	3%	3%	3%	3%	2%	2%	1%	2%	2%	1%	1%	1%
Day Ahead Market	100%	100%	100%	100%	100%	100%	100%	100%	100%	100%	100%	100%
Balancing Energy LSE Internal LBMP Energy Sales	-17%	410%	821%	182%	-10%	148%	311%	18%	-77%	61%	52%	59%
Balancing Energy External TC LBMP Energy Sales	5%	39%	-36%	-15%	44%	-95%	-165%	89%	189%	37%	44%	30%
Balancing Energy Bilateral - Internal Bilaterals	1%	-51%	8%	12%	10%	14%	-19%	27%	17%	-2%	3%	3%
Balancing Energy Bilateral - Import/Non-LBMP Market Bilaterals	13%	27%	24%	3%	8%	15%	24%	19%	14%	8%	9%	9%
Balancing Energy Bilateral - Export/Non-LBMP Market Bilaterals	0%	0%	0%	0%	1%	2%	0%	1%	0%	0%	0%	0%
Balancing Energy Bilateral - Wheel Through Bilaterals	-103%	-524%	-717%	-84%	-154%	-183%	-52%	-55%	-42%	-4%	-8%	-2%
Balancing Energy +	100%	100%	100%	100%	100%	100%	100%	100%	100%	100%	100%	100%
Transactions Summary												
LBMP	45%	44%	46%	48%	42%	46%	53%	52%	49%	49%	52%	50%
Internal Bilaterals	52%	52%	51%	49%	55%	51%	45%	45%	48%	48%	45%	47%
Import Bilaterals	1%	1%	1%	0%	0%	0%	0%	0%	0%	1%	1%	1%
Export Bilaterals	1%	1%	1%	1%	1%	1%	1%	1%	1%	1%	1%	1%
Wheels Through	1%	2%	1%	1%	1%	2%	1%	1%	1%	1%	1%	1%
Market Share of Total Load												
Day Ahead Market	101.60%	100.25%	99.75%	98.14%	100.79%	100.50%	99.46%	99.51%	99.20%	97.34%	97.35%	96.35%
Balancing Energy +	-1.60% #	-0.25% #	0.25%	1.86%	-0.79% #	-0.50% #	0.54%	0.49%	0.80%	2.66%	2.65%	3.65%
Total MWH	13,366,052	11,986,216	12,792,696	12,088,196	12,462,759	13,974,041	16,385,032	16,245,862	14,035,422	13,210,317	12,809,561	14,094,395

The sign convention has changed for the detail of Balancing Energy when the total monthly Balancing Energy is negative. The signs for the detail section more intuitively reflect the direction of power flow eliminating the use of double negatives. This affects Jan., Feb., May, and June 2002.

+ Balancing Energy: Load(MW) purchased at Real Time LBMP.

NYISO Monthly Average Internal LBMPs 2002 - 2003



* Commonly referred to as Hour Ahead Market (HAM)

NYISO Markets 2003 Ancillary Services Statistics

	January	February	March	April	May	June	July	August	September	October	November	December
<u>ANCILLARY SERVICES Unweighted Price (\$/MWH)</u>												
<u>Day Ahead Market</u>												
10 Min Spin East	8.78											
10 Min Spin West	8.30											
10 Min Non Synch East	1.22											
10 Min Non Synch West	1.15											
30 Min East	1.14											
30 Min West	1.14											
Regulation East	23.17											
Regulation West	23.17											
<u>BME* Market</u>												
10 Min Spin East	1.64											
10 Min Spin West	1.35											
10 Min Non Synch East	0.43											
10 Min Non Synch West	0.20											
30 Min East	0.19											
30 Min West	0.19											
Regulation East	2.71											
Regulation West	2.71											
<u>ANCILLARY SERVICES Standard Deviation (\$/MWH)</u>												
<u>Day Ahead Market</u>												
10 Min Spin East	11.16											
10 Min Spin West	11.24											
10 Min Non Synch East	0.29											
10 Min Non Synch West	0.25											
30 Min East	0.26											
30 Min West	0.26											
Regulation East	16.73											
Regulation West	16.73											
<u>BME* Market</u>												
10 Min Spin East	3.79											
10 Min Spin West	3.76											
10 Min Non Synch East	0.86											
10 Min Non Synch West	0.55											
30 Min East	0.52											
30 Min West	0.52											
Regulation East	7.74											
Regulation West	7.74											

* Commonly Referred to as Hour Ahead Market (HAM)

4-E

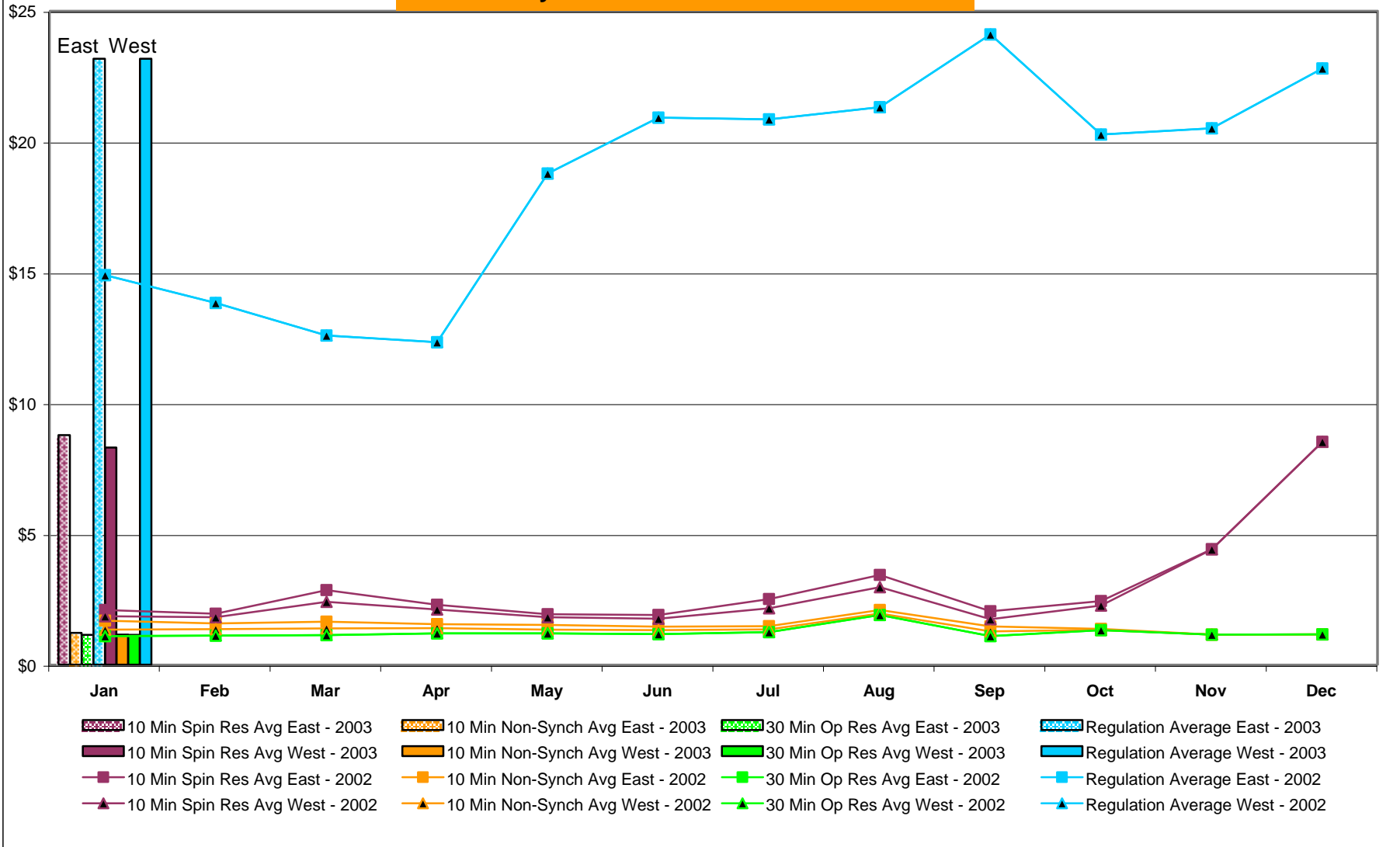
NYISO Markets 2002 Ancillary Services Statistics

	January	February	March	April	May	June	July	August	September	October	November	December
<u>ANCILLARY SERVICES Unweighted Price (\$/MWH)</u>												
<u>Day Ahead Market</u>												
10 Min Spin East	2.09	1.95	2.85	2.29	1.93	1.90	2.51	3.43	2.04	2.43	4.42	8.52
10 Min Spin West	1.85	1.81	2.40	2.11	1.81	1.75	2.16	2.96	1.74	2.26	4.41	8.52
10 Min Non Synch East	1.68	1.58	1.64	1.55	1.52	1.46	1.47	2.09	1.46	1.37	1.15	1.16
10 Min Non Synch West	1.34	1.36	1.39	1.40	1.34	1.32	1.35	1.96	1.27	1.33	1.15	1.16
30 Min East	1.09	1.11	1.13	1.19	1.20	1.17	1.24	1.90	1.09	1.32	1.15	1.16
30 Min West	1.09	1.11	1.13	1.19	1.20	1.17	1.24	1.90	1.09	1.32	1.15	1.16
Regulation East	14.90	13.83	12.59	12.33	18.78	20.92	20.85	21.31	24.10	20.27	20.51	22.80
Regulation West	14.90	13.83	12.59	12.33	18.78	20.92	20.85	21.31	24.10	20.27	20.51	22.80
<u>BME* Market</u>												
10 Min Spin East	1.93	0.99	1.46	3.30	0.45	0.46	1.81	1.38	0.64	0.80	1.56	2.05
10 Min Spin West	1.73	0.94	1.26	1.65	0.44	0.38	0.55	0.68	0.42	0.72	1.53	1.91
10 Min Non Synch East	0.65	0.56	0.62	2.12	0.33	0.38	1.48	1.00	0.38	0.16	0.27	0.23
10 Min Non Synch West	0.56	0.51	0.44	1.14	0.32	0.31	0.26	0.31	0.21	0.08	0.26	0.15
30 Min East	0.52	0.47	0.41	1.08	0.28	0.17	0.01	0.18	0.11	0.06	0.24	0.14
30 Min West	0.52	0.47	0.39	1.05	0.28	0.17	0.01	0.18	0.11	0.06	0.24	0.14
Regulation East	0.52	0.74	0.50	0.60	0.44	1.28	1.20	1.37	0.99	1.26	0.66	2.19
Regulation West	0.55	0.74	0.51	0.60	0.44	1.28	1.20	1.37	0.99	1.26	0.66	2.19
<u>ANCILLARY SERVICES Standard Deviation (\$/MWH)</u>												
<u>Day Ahead Market</u>												
10 Min Spin East	0.64	0.49	8.19	1.72	0.72	1.04	3.68	5.68	0.95	2.90	8.20	11.46
10 Min Spin West	0.61	0.29	7.86	0.60	0.15	0.26	3.57	5.62	0.43	2.85	8.21	11.46
10 Min Non Synch East	0.60	0.51	0.50	0.43	0.47	0.45	0.36	4.78	0.39	0.29	0.22	0.21
10 Min Non Synch West	0.38	0.36	0.32	0.27	0.30	0.29	0.30	4.79	0.30	0.26	0.21	0.20
30 Min East	0.14	0.17	0.13	0.04	0.23	0.22	0.27	4.80	0.33	0.26	0.21	0.20
30 Min West	0.14	0.17	0.13	0.04	0.23	0.22	0.27	4.80	0.33	0.26	0.21	0.20
Regulation East	12.10	10.38	8.97	4.40	13.98	15.33	16.97	16.88	19.62	17.50	13.83	16.16
Regulation West	12.10	10.38	8.97	4.40	13.98	15.33	16.97	16.88	19.62	17.50	13.83	16.16
<u>BME* Market</u>												
10 Min Spin East	7.17	3.36	4.96	12.50	0.69	0.86	4.66	4.00	1.54	2.41	4.50	5.52
10 Min Spin West	6.83	3.35	4.91	6.47	0.67	0.78	1.65	2.35	0.95	2.39	4.45	5.37
10 Min Non Synch East	0.73	0.73	0.86	9.94	0.59	0.79	4.51	3.75	1.12	0.57	0.93	1.13
10 Min Non Synch West	0.64	0.66	0.68	5.46	0.56	0.70	1.24	1.76	0.62	0.38	0.92	0.41
30 Min East	0.58	0.58	0.60	5.27	0.48	0.54	0.12	1.29	0.47	0.32	0.90	0.40
30 Min West	0.59	0.58	0.59	5.09	0.48	0.54	0.12	1.29	0.47	0.32	0.90	0.40
Regulation East	2.05	1.99	2.26	2.73	2.31	5.00	4.78	5.43	3.14	4.26	2.75	6.29
Regulation West	2.08	1.99	2.23	2.64	2.31	5.00	4.78	5.43	3.14	4.26	2.75	6.29

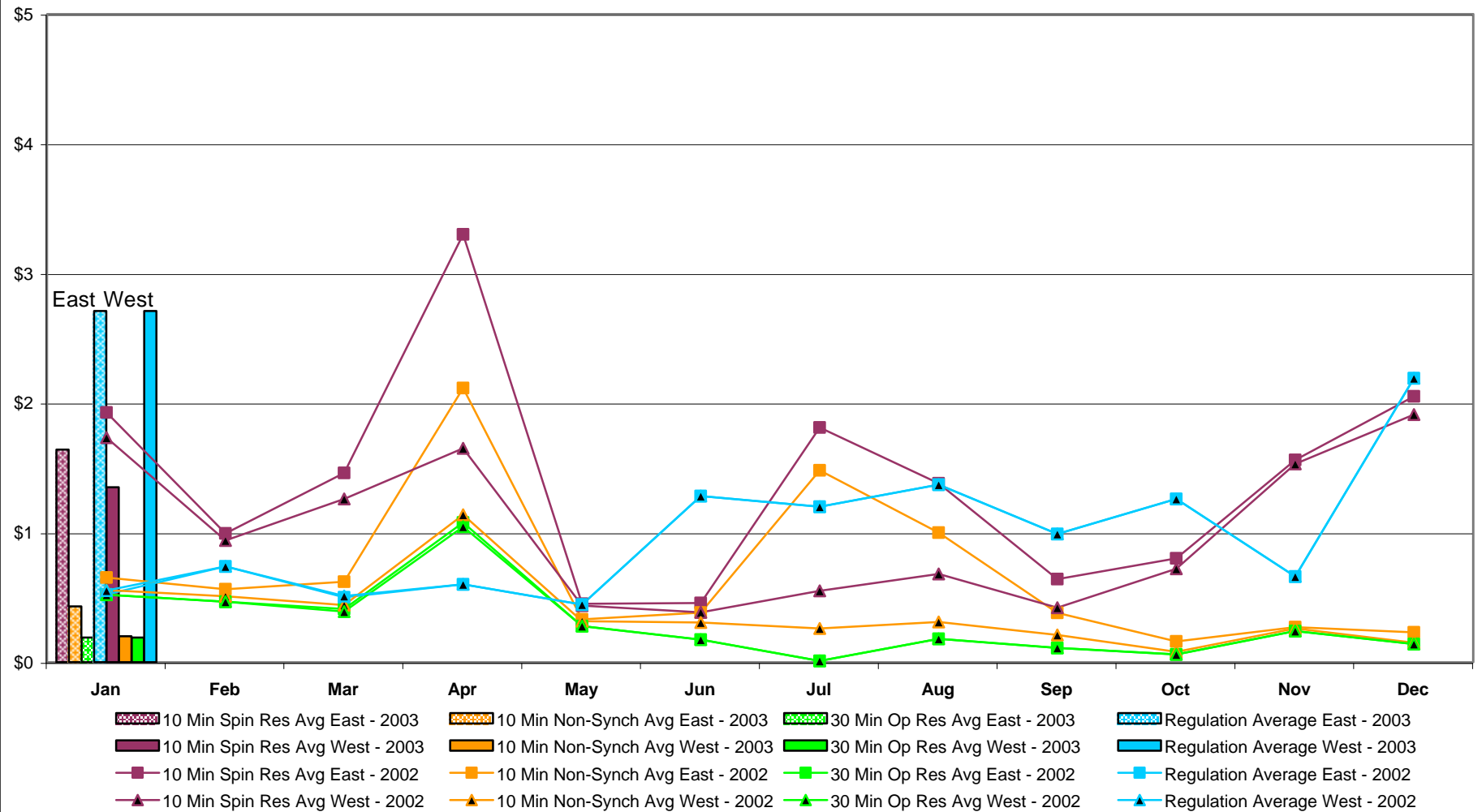
* Commonly Referred to as Hour Ahead Market (HAM)

4-F

NYISO Monthly Average Ancillary Service Prices Day Ahead Market 2002 - 2003



NYISO Monthly Average Ancillary Service Prices BME * 2002 - 2003



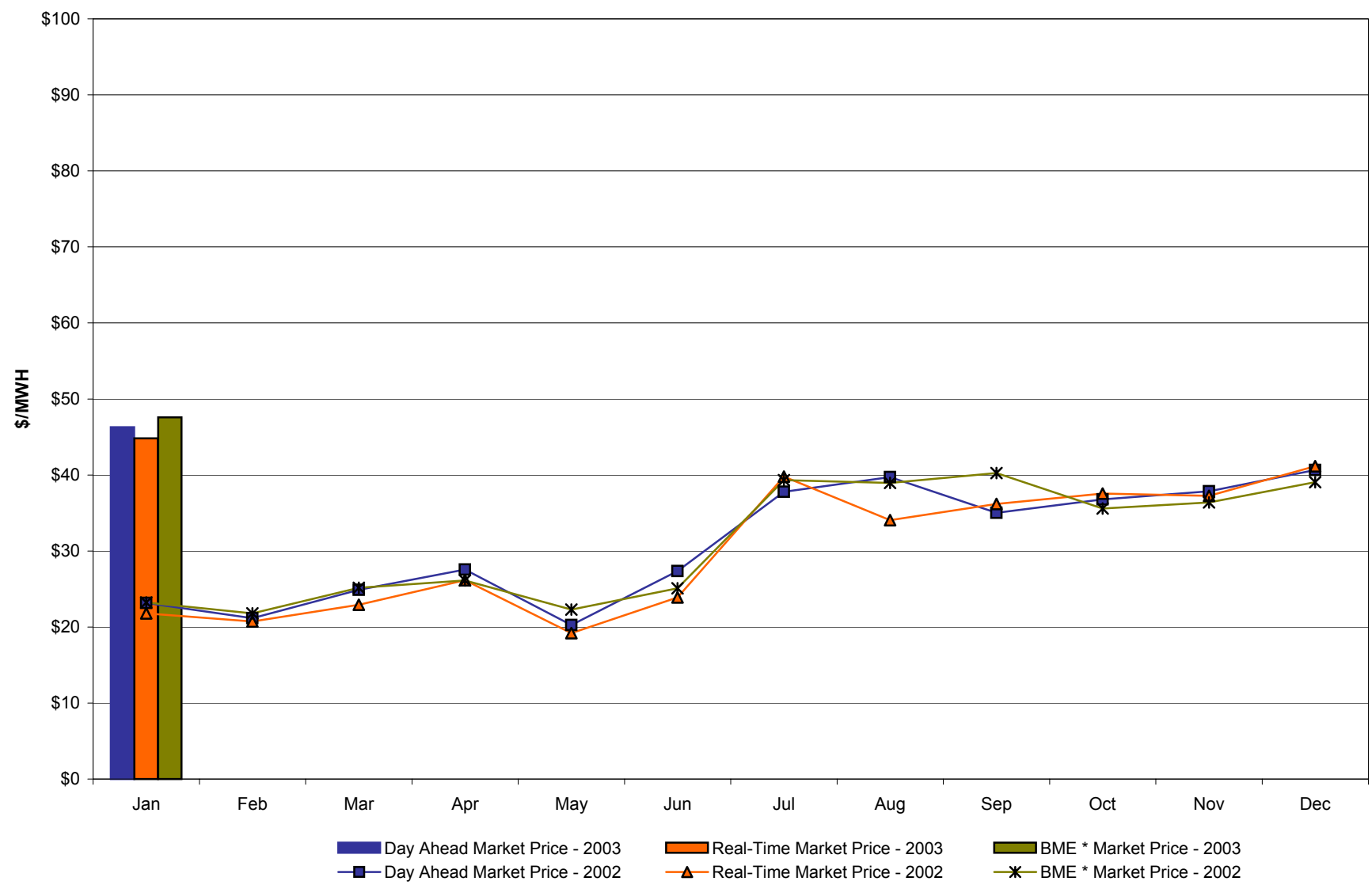
* Commonly referred to as Hour Ahead Market (HAM)

January, 2003 Zonal Statistics for NYISO (\$/MWH)

	WEST Zone A	CENTRAL Zone C	MOHAWK VALLEY Zone E	CAPITAL Zone F	HUDSON VALLEY Zone G	GENESEE Zone B	LONG ISLAND Zone K	NORTH Zone D	NEW YORK CITY Zone J	MILLWOOD Zone H	DUNWOODIE Zone I
<u>DAY AHEAD LBMP</u>											
Unweighted Price	46.29	51.08	53.59	55.43	54.29	49.49	72.89	52.59	74.76	50.73	50.16
Standard Deviation	17.36	18.05	18.97	19.45	19.40	17.81	22.97	18.62	26.32	19.72	20.23
<u>BME * LBMP</u>											
Unweighted Price	47.60	53.30	55.97	57.55	58.35	50.45	72.53	54.95	76.11	58.20	59.01
Standard Deviation	22.53	23.19	24.30	24.59	24.64	22.73	35.20	23.90	34.11	24.53	24.89
<u>REAL TIME LBMP</u>											
Unweighted Price	44.82	47.25	49.68	53.67	51.61	48.17	71.47	48.66	79.50	52.10	52.92
Standard Deviation	23.35	24.71	26.18	27.88	26.45	25.49	36.94	25.77	50.96	26.69	27.12
	HYDRO QUEBEC Zone M	NEW ENGLAND Zone N	ONTARIO HYDRO Zone O	PJM Zone P							
<u>DAY AHEAD LBMP</u>											
Unweighted Price	52.23	55.58	45.37	47.72							
Standard Deviation	18.61	19.61	17.21	18.46							
<u>BME * LBMP</u>											
Unweighted Price	53.54	57.95	46.62	48.70							
Standard Deviation	24.89	24.88	21.51	25.13							
<u>REAL TIME LBMP</u>											
Unweighted Price	48.23	52.84	41.84	44.48							
Standard Deviation	26.04	26.46	21.79	24.46							

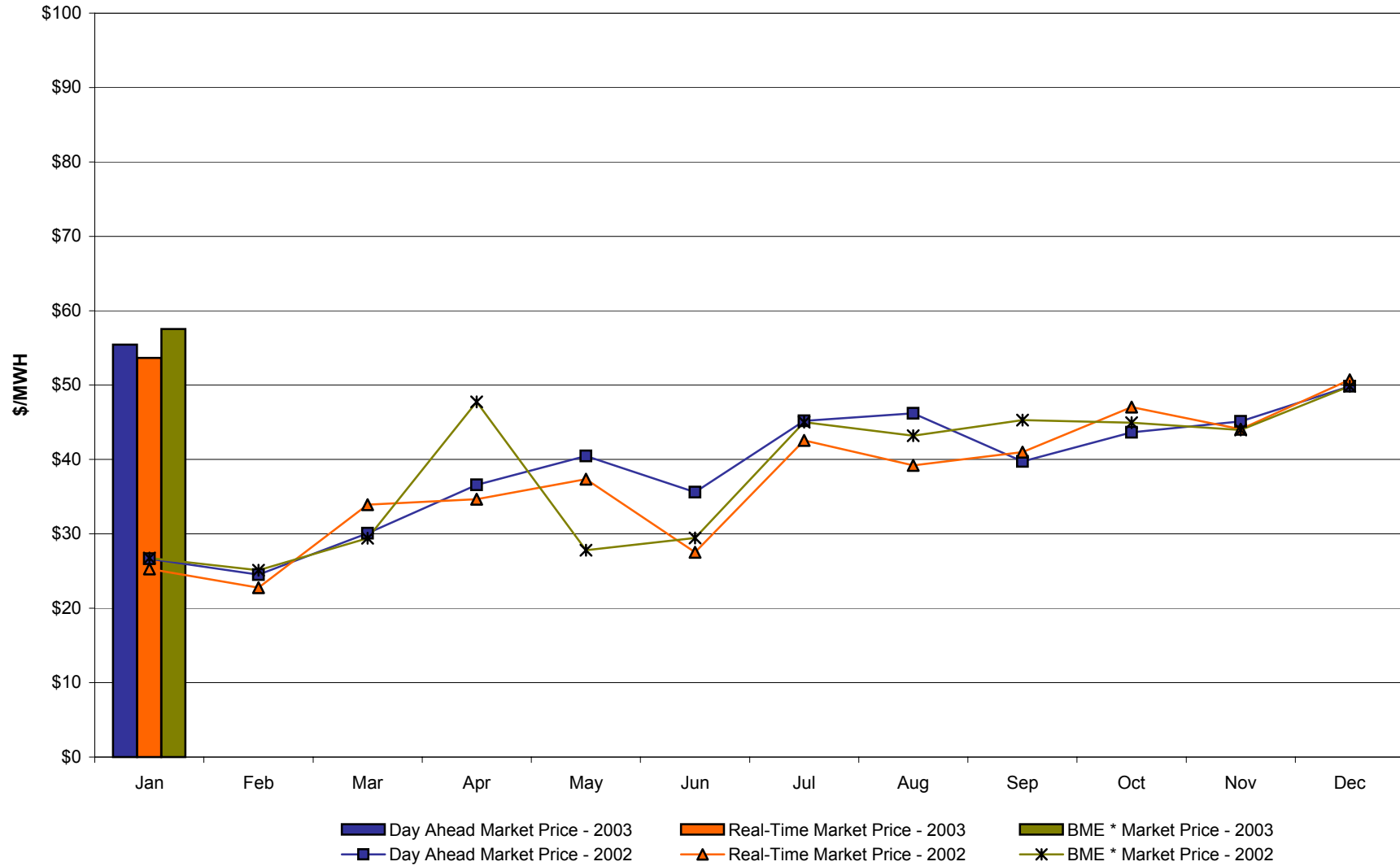
*Commonly Referred as Hour Ahead Market (HAM)

West Zone A Monthly Average LBMP Prices 2002 - 2003



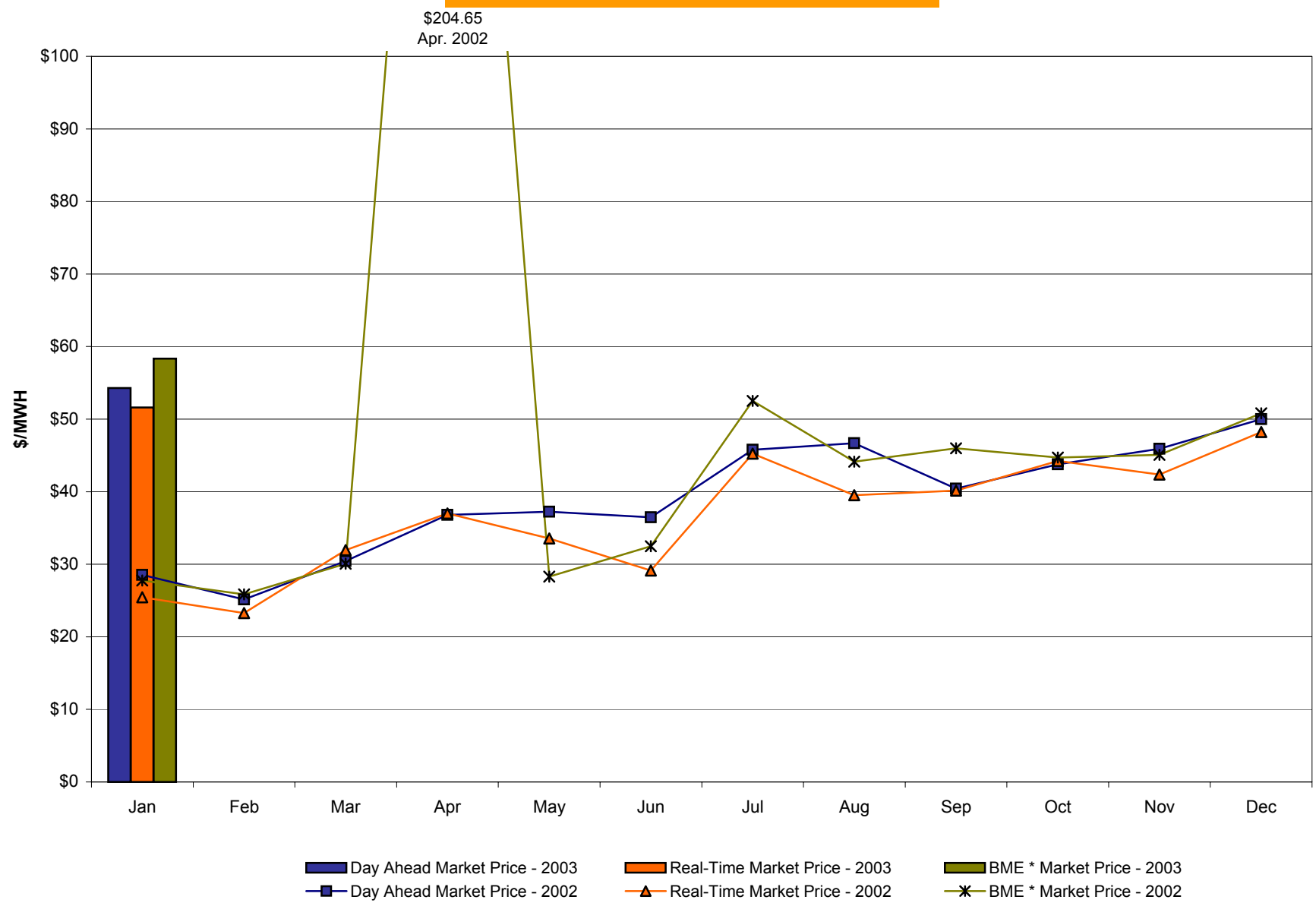
* Commonly referred to as Hour Ahead Market (HAM)

Capital Zone F Monthly Average LBMP Prices 2002 - 2003



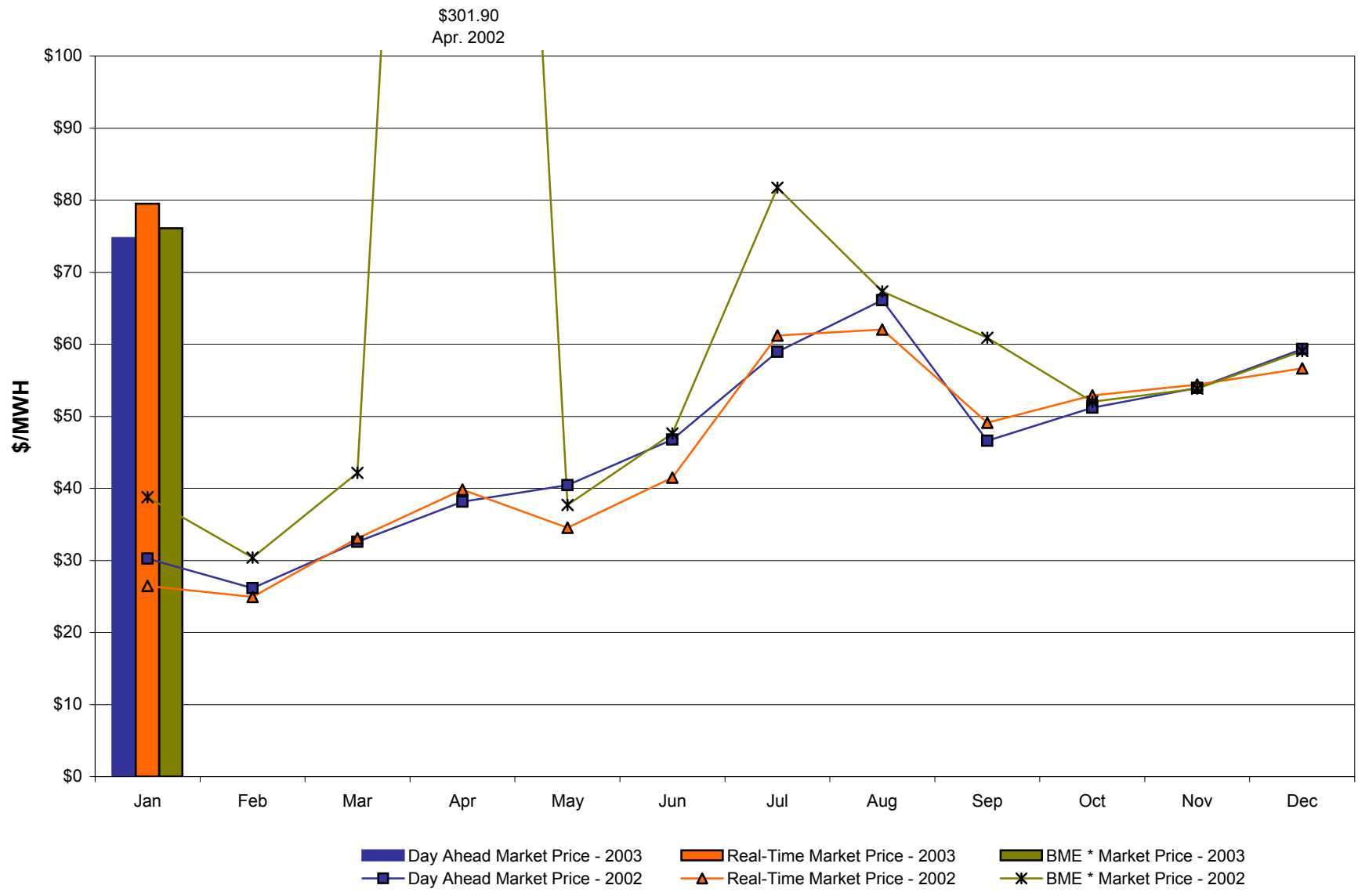
* Commonly referred to as Hour Ahead Market (HAM)
4-N

Hudson Valley Zone G Monthly Average LBMP Prices 2002 - 2003



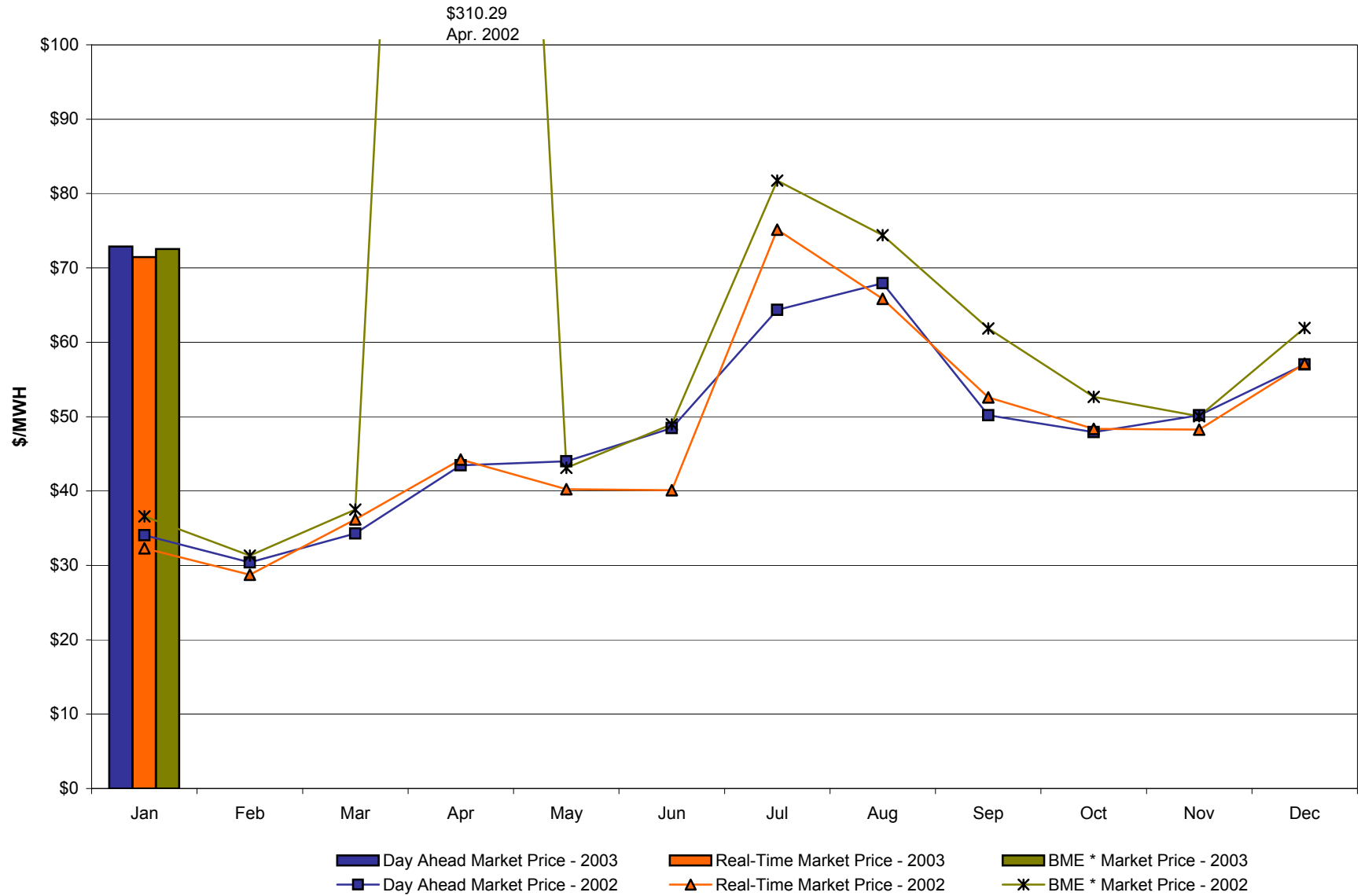
* Commonly referred to as Hour Ahead Market (HAM)
4-J

NYC Zone J Monthly Average LBMP Prices 2002 - 2003



* Commonly referred to as Hour Ahead Market (HAM)
4-K

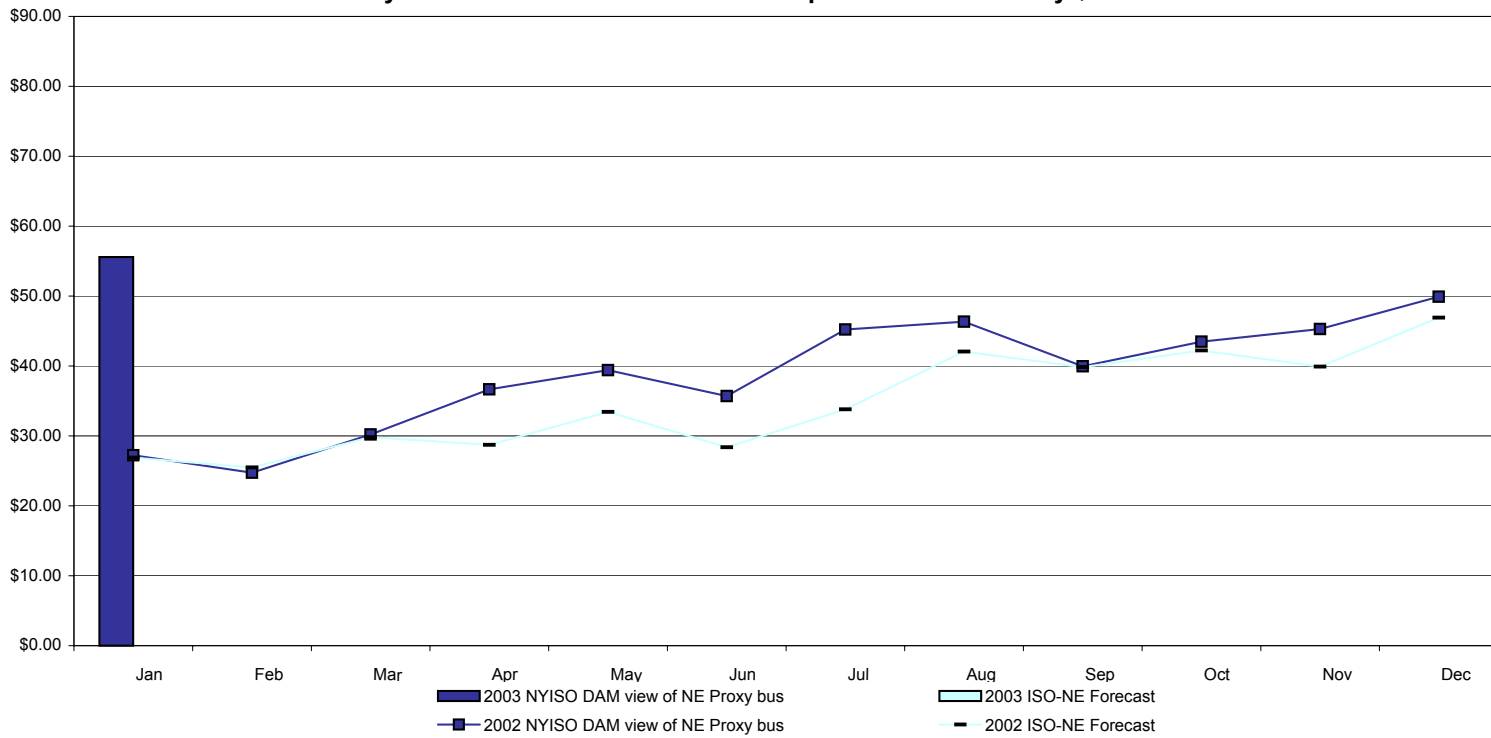
Long Island Zone K Monthly Average LBMP Prices 2002 - 2003



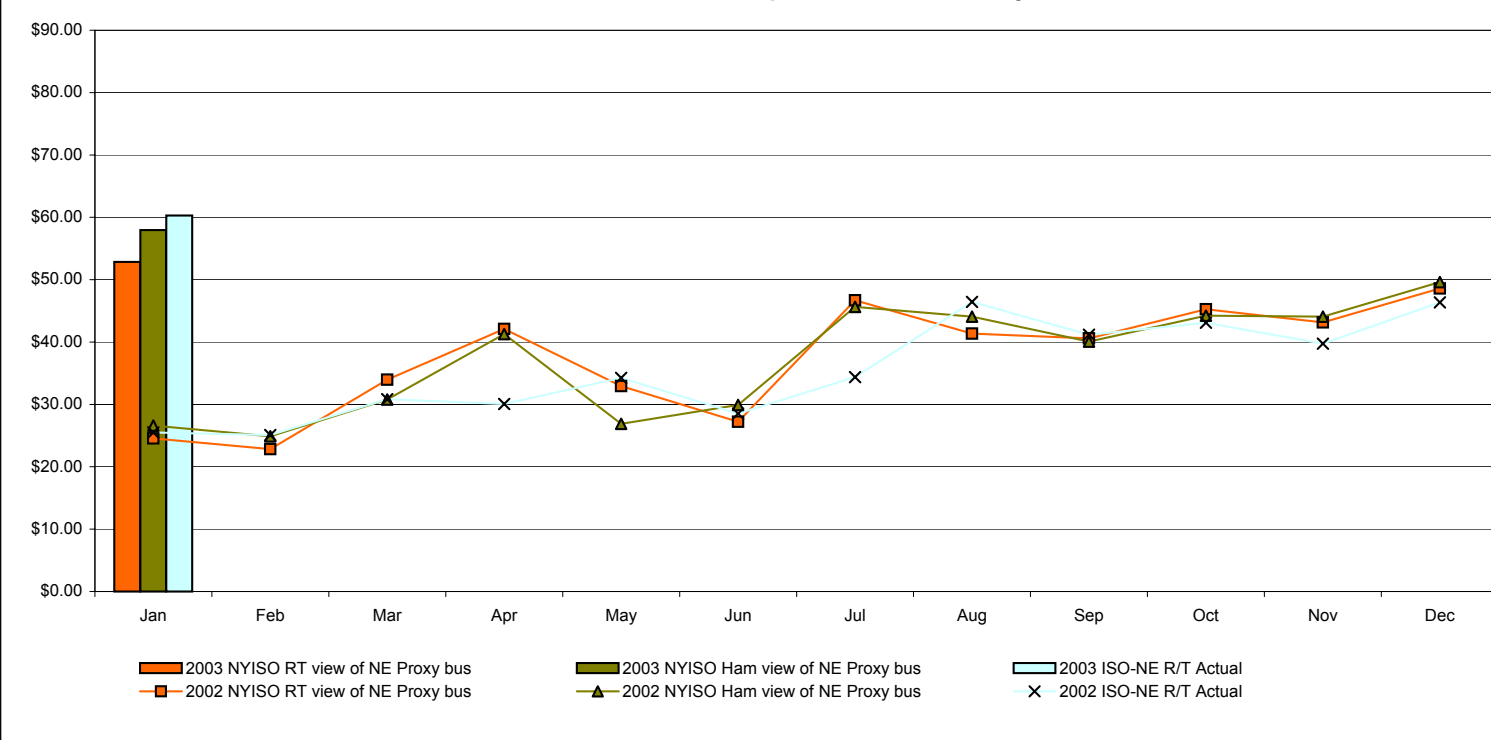
* Commonly referred to as Hour Ahead Market (HAM)
4-M

External Comparison ISO-NE

Day Ahead Market External Zone Comparison - ISO-NE only \$/MWH



Real Time External Zone Comparison - ISO-NE only \$/MWH



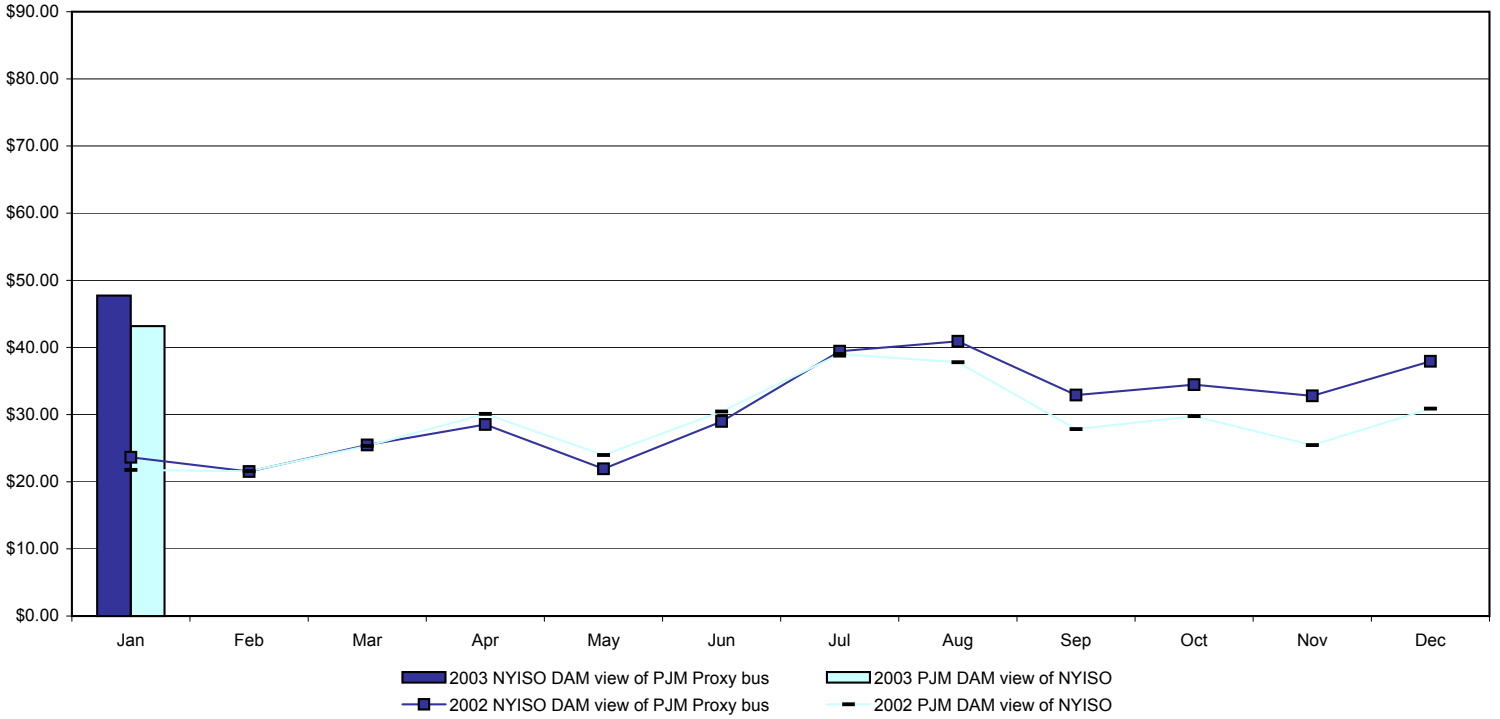
Note:

ISO-NE Forecast is an advisory posting @ 18:00 day before

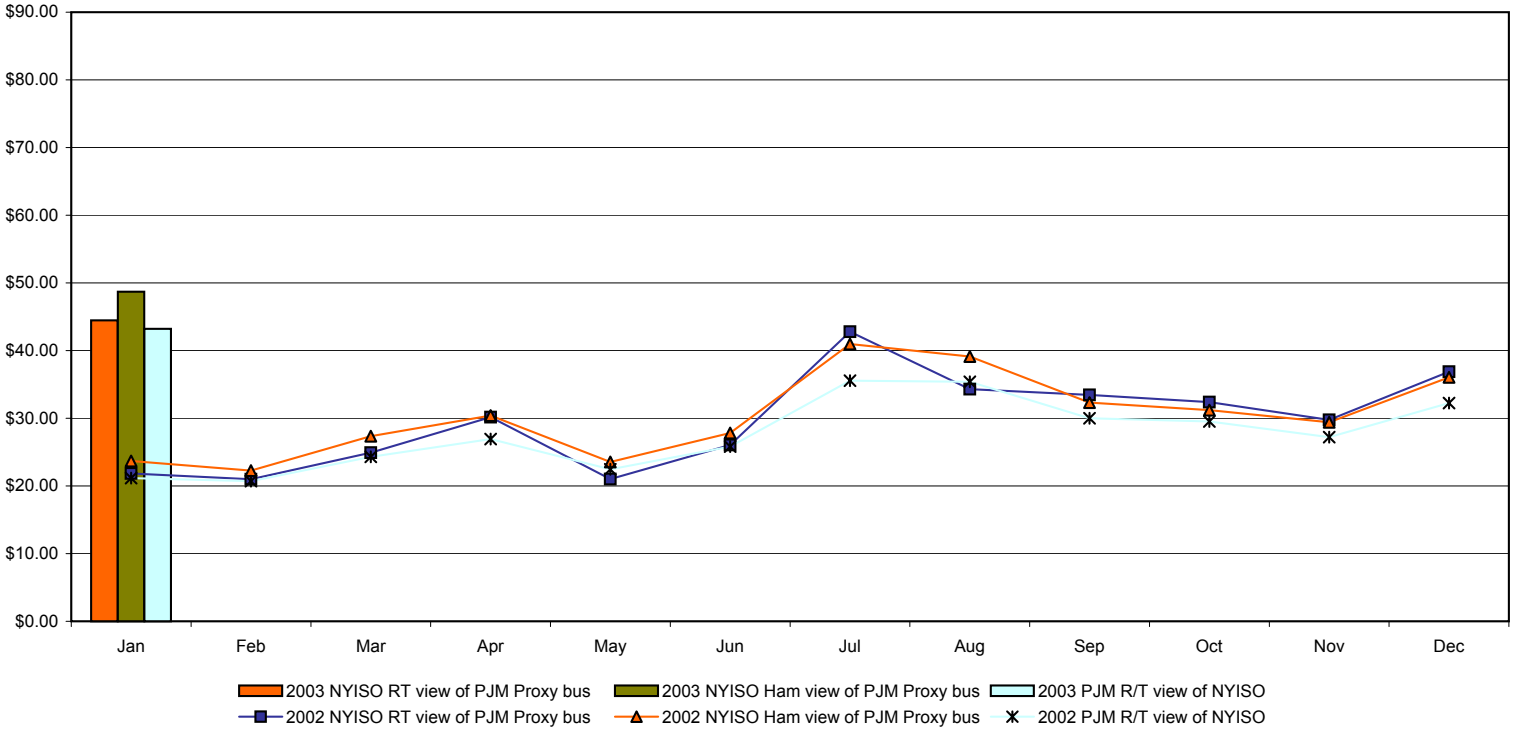
ISO-NE Monthly Average Forecast for 01/03 is not yet available

External Comparison PJM

Day Ahead Market External Zone Comparison - PJM only \$/MWH



Real Time External Zone Comparison - PJM only \$/MWH

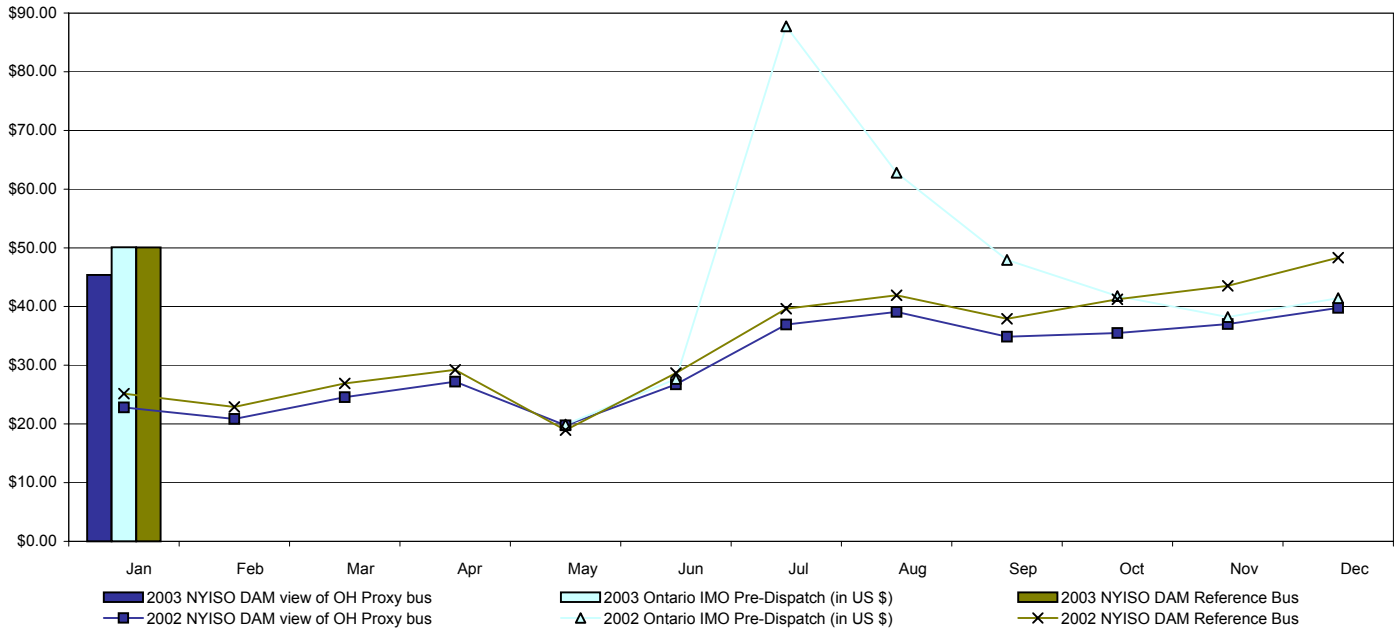


Note:

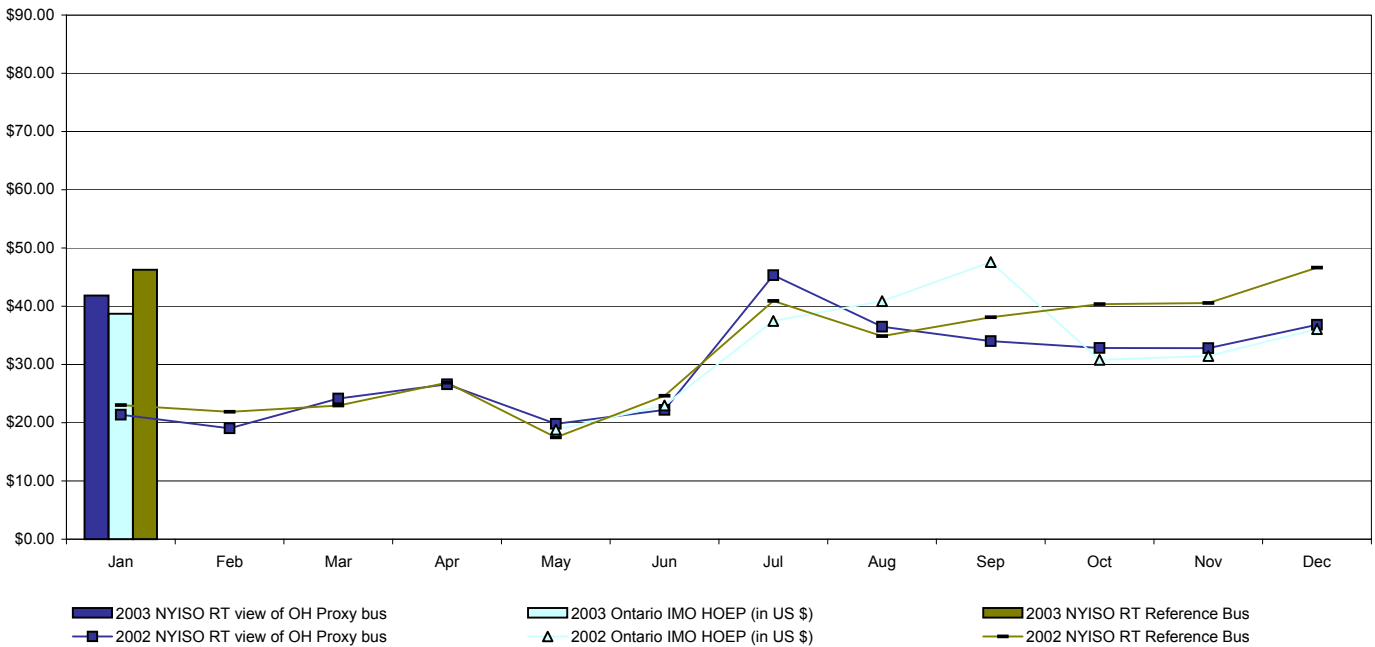
After 4/1/01 PJM consolidated NYPP-E and NYPP-W interfaces
 After 5/1/02 PJM lists only one interface as NYIS

External Comparison Ontario IMO

Day Ahead Market External Zone Comparison - Ontario IMO only \$/MWH

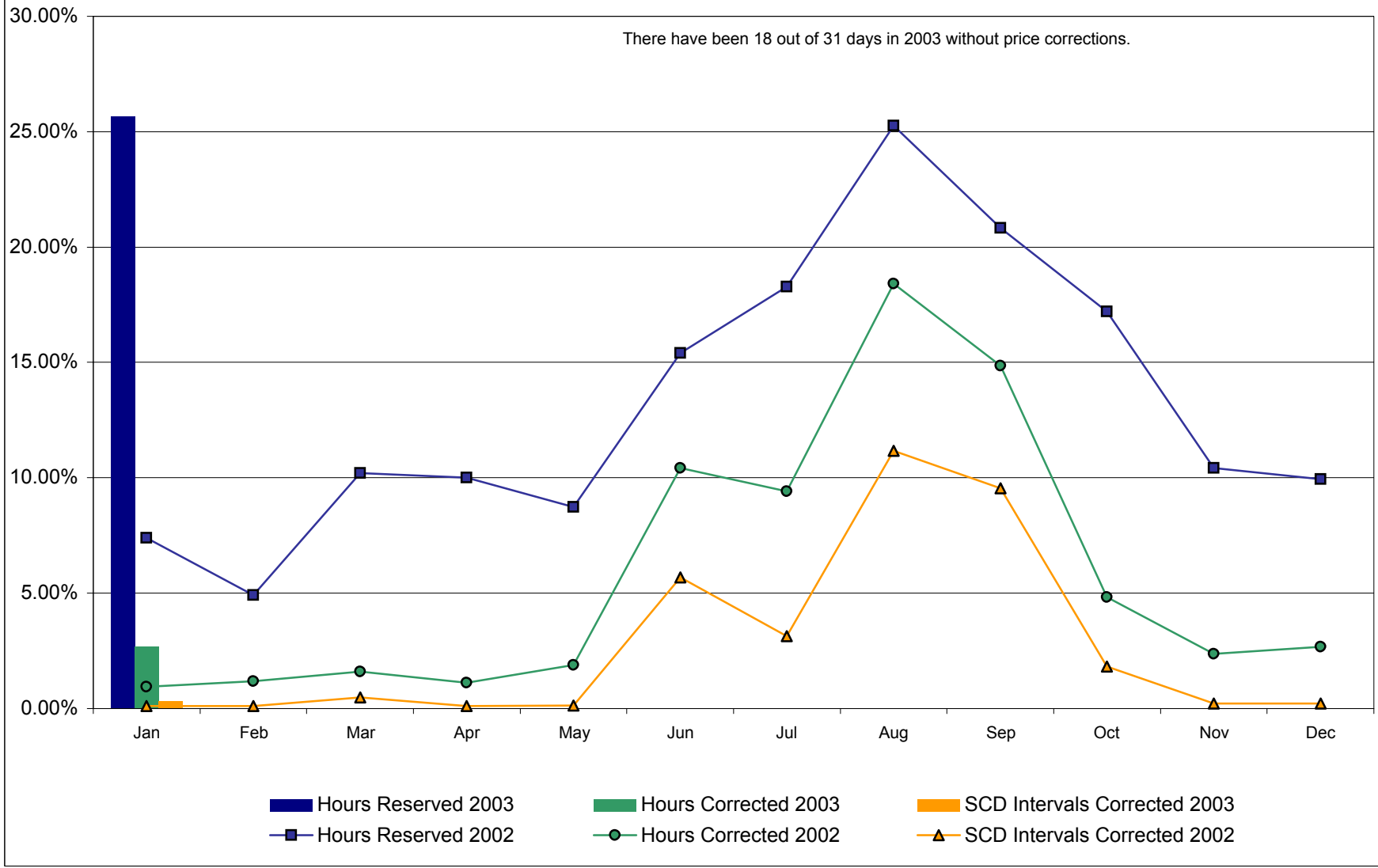


Real Time External Zone Comparison - Ontario IMO only \$/MWH



Notes: Exchange factor used for January 2003 was .65 to US \$
 HOEP: Hourly Ontario Energy Price
 Pre-Dispatch: Projected Energy Price

Percentage of Real-Time Corrections



NYISO Price Correction Statistics

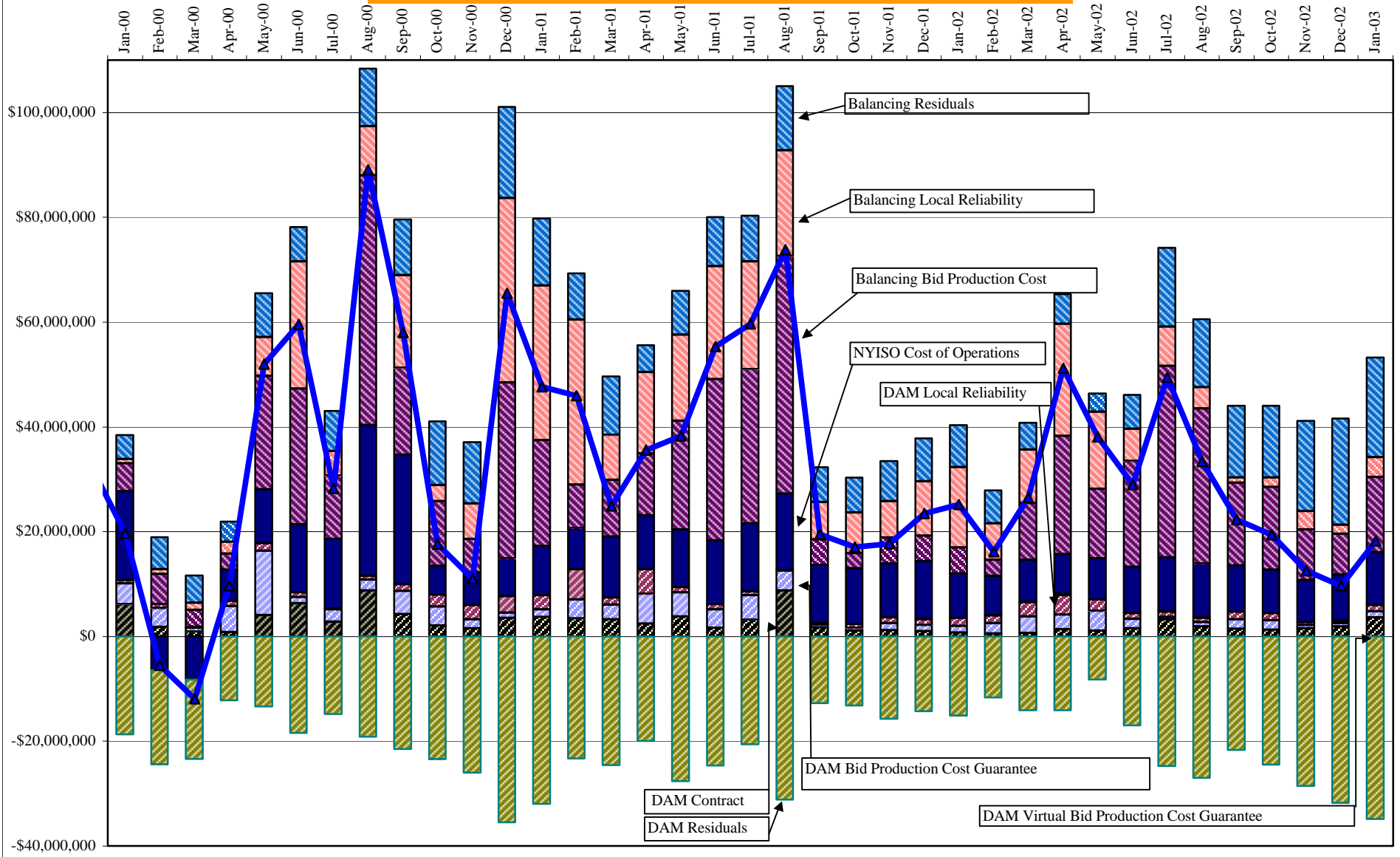
NYISO Price Corrections 2003

<u>Interval Corrections</u>	January	February	March	April	May	June	July	August	September	October	November	December
Number of Intervals corrected in the month	35											
Number of Intervals in the month	10,986											
Percentage of intervals corrected in the month	0.32%											
Number of Intervals corrected Year-to-date	35											
Number of Intervals Year-to-date	10,986											
Percentage of intervals corrected Year-to-date	0.32%											
<u>Hours Reserved</u>												
Number of hours reserved in the month	191											
Number of hours in the month	744											
Percentage of hours reserved in the month	25.67%											
Number of hours reserved Year-to-date	191											
Number of hours Year-to-date	744											
Percentage of hours reserved Year-to-date	25.67%											
<u>Hours Corrected</u>												
Number of hours corrected in the month	20											
Number of hours in the month	744											
Percentage of hours corrected in the month	2.69%											
Number of hours corrected Year-to-date	20											
Number of hours Year-to-date	744											
Percentage of hours corrected Year-to-date	2.69%											
<u>Days Without Corrections</u>												
Days without price corrections in the month	18											
Days without price corrections Year-to-date	18											

NYISO Price Corrections 2002

<u>Interval Corrections</u>	January	February	March	April	May	June	July	August	September	October	November	December
Number of Intervals corrected in the month	12	11	55	13	16	616	346	1,261	1,016	201	23	24
Number of Intervals in the month	11,129	10,111	11,231	11,075	11,330	10,845	11,014	11,291	10,632	11,068	10,568	11,043
Percentage of intervals corrected in the month	0.11%	0.11%	0.49%	0.12%	0.14%	5.68%	2.28%	11.17%	9.56%	1.82%	0.22%	0.22%
Number of Intervals corrected Year-to-date	12	23	78	91	107	723	1,069	2,330	3,346	3,547	3,570	3,594
Number of Intervals Year-to-date	11,129	21,240	32,471	43,546	54,876	65,721	76,735	88,026	98,658	109,726	120,294	131,337
Percentage of intervals corrected Year-to-date	0.11%	0.11%	0.24%	0.21%	0.19%	1.10%	1.27%	2.65%	3.39%	3.23%	2.97%	2.74%
<u>Hours Reserved</u>												
Percentage of hours reserved in the month	7.3%	4.9%	10.2%	10.0%	8.7%	15.4%	18.3%	25.3%	20.8%	17.2%	10.4%	10.0%
Percentage of hours reserved Year-to-date	7.3%	6.1%	7.6%	8.2%	8.3%	9.5%	10.8%	12.6%	13.5%	13.9%	13.6%	13.3%

NYISO Dollar Flows - Uplift - OATT Schedule 1 components

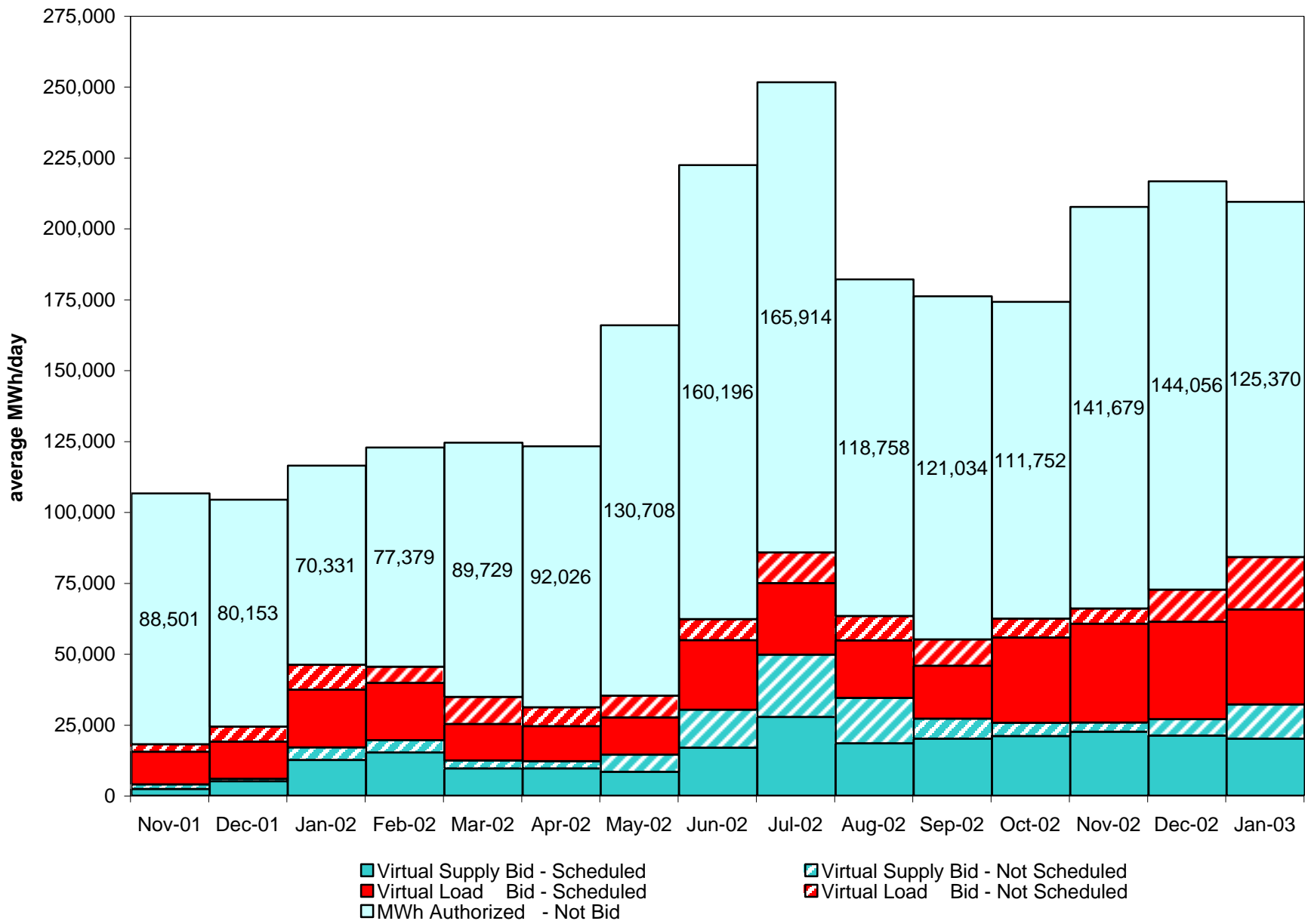


- | | | |
|---|--|---|
| <ul style="list-style-type: none"> DAM Contract Balancing Bid Production Cost Guarantee DAM Virtual Local Reliability Balancing Net | <ul style="list-style-type: none"> Bid Production Cost Guarantee DAM NYISO Cost of Operations Residuals DAM | <ul style="list-style-type: none"> Local Reliability Dam Bid Production Cost Guarantee Balancing Residuals Balancing |
|---|--|---|

NYISO Dollar Flows - Uplift - OATT Schedule 1 components

<u>Month</u>	<u>Bid Production</u>				<u>Bid Production</u>			<u>NYISO Cost of Operations</u>	<u>Bid Production</u>
	<u>Cost Guarantee</u>	<u>Local Reliability</u>	<u>DAM Contract</u>	<u>Residuals DAM</u>	<u>Cost Guarantee</u>	<u>Local Reliability</u>	<u>Residuals</u>		<u>Cost Guarantee</u>
	<u>DAM</u>	<u>Dam</u>	<u>Balancing</u>		<u>Balancing</u>	<u>Balancing</u>	<u>Balancing</u>		<u>DAM Virtual</u>
November 1999	4,941,920	285,243	503,202	4,654,399	3,363,208	79,256	(1,481,585)	7,458,588	-
December 1999	7,905,082	205,558	3,725,314	(10,577,770)	2,810,414	177,250	8,758,529	19,785,805	-
January 2000	3,921,759	669,431	6,128,719	(18,802,509)	5,311,717	856,783	4,622,601	16,948,606	-
February 2000	3,598,742	725,692	1,753,530	(18,090,422)	5,833,143	880,245	6,174,889	(6,383,278)	-
March 2000	743,174	162,456	858,473	(15,289,695)	3,296,993	1,346,536	5,181,926	(8,219,196)	-
April 2000	4,962,375	997,733	796,618	(12,259,020)	3,109,082	2,274,080	3,831,852	5,906,673	-
May 2000	12,224,024	1,437,956	4,060,139	(13,472,727)	21,680,748	7,432,003	8,310,130	10,316,538	-
June 2000	1,176,559	946,153	6,293,032	(18,557,313)	25,848,819	24,280,580	6,613,587	12,989,632	-
July 2000	2,338,901	138,673	2,793,275	(14,877,126)	12,068,450	4,722,303	7,720,747	13,289,639	-
August 2000	2,074,434	719,486	8,705,050	(19,257,224)	47,718,951	9,334,816	10,997,153	28,798,906	-
September 2000	4,419,670	1,271,363	4,186,164	(21,627,656)	16,586,838	17,725,227	10,668,331	24,768,196	-
October 2000	3,545,249	2,305,494	2,085,607	(23,499,250)	12,433,485	2,986,888	12,264,936	5,468,245	-
November 2000	1,692,822	2,690,463	1,542,673	(26,122,046)	6,433,645	6,767,941	11,774,879	6,213,050	-
December 2000	992,473	3,156,282	3,546,551	(35,541,238)	33,600,022	35,179,111	17,358,889	7,194,728	-
January 2001	1,453,613	2,654,852	3,698,764	(32,082,355)	20,149,670	29,520,331	12,811,821	9,437,572	-
February 2001	3,545,212	5,805,075	3,446,281	(23,362,877)	8,338,575	31,438,790	8,861,937	7,832,985	-
March 2001	2,800,244	1,339,141	3,226,422	(24,658,464)	10,823,862	8,621,178	11,143,324	11,621,867	-
April 2001	5,755,343	4,662,028	2,379,844	(20,056,404)	11,819,651	15,483,020	5,178,836	10,329,252	-
May 2001	4,564,681	980,412	3,790,044	(27,750,663)	20,804,273	16,347,611	8,456,447	11,041,966	-
June 2001	3,545,115	988,662	1,595,693	(24,780,392)	30,747,799	21,597,618	9,380,139	12,207,297	-
July 2001	4,716,252	696,274	3,126,684	(20,646,589)	29,392,686	20,575,269	8,801,150	13,017,828	-
August 2001	3,859,234	85,320	8,693,460	(31,231,253)	45,316,407	20,184,996	12,280,839	14,578,367	-
September 2001	519,161	286,605	1,692,985	(12,819,999)	4,944,572	7,078,454	6,724,535	11,084,099	-
October 2001	521,039	752,362	1,043,303	(13,250,927)	2,849,831	7,759,990	6,681,997	10,685,437	-
November 2001	1,346,124	1,129,466	1,132,849	(15,838,722)	4,911,997	7,012,431	7,685,803	10,264,569	23,718
December 2001	1,191,852	1,070,155	975,869	(14,396,770)	4,900,699	10,339,960	8,252,859	10,918,389	192,968
January 2002	1,258,796	1,525,675	714,247	(15,152,948)	4,979,403	15,415,098	7,957,906	8,421,346	21,121
February 2002	2,029,673	1,478,569	486,856	(11,769,063)	3,074,558	6,932,927	6,320,959	7,495,488	42,422
March 2002	3,211,105	2,679,784	590,783	(14,185,031)	10,804,094	10,209,896	5,118,259	8,027,309	96,919
April 2002	2,768,864	3,752,856	1,348,328	(14,165,419)	22,548,904	21,376,652	5,675,111	7,645,022	202,298
May 2002	3,736,845	2,147,744	1,097,473	(8,300,895)	13,286,416	14,699,280	3,504,245	7,804,701	70,848
June 2002	1,778,844	1,063,208	1,559,435	(17,097,562)	20,216,602	6,184,052	6,463,411	8,752,942	58,982
July 2002	460,422	959,541	3,254,514	(24,800,029)	36,546,421	7,566,296	15,061,730	10,286,825	67,750
August 2002	750,384	846,545	1,914,049	(27,121,971)	29,632,636	4,091,130	12,971,010	10,275,259	55,320
September 2002	1,754,622	1,442,632	1,459,903	(21,743,005)	15,828,800	1,015,010	13,715,137	8,780,970	57,973
October 2002	1,876,378	1,267,010	1,216,640	(24,584,705)	15,796,877	1,868,775	13,655,822	8,268,185	54,895
November 2002	652,407	566,530	1,489,953	(28,594,683)	9,689,687	3,469,795	17,281,157	7,996,653	20,543
December 2002	587,411	440,590	1,907,862	(31,899,511)	7,765,964	1,729,692	20,249,313	8,814,856	49,422
January 2003	1,202,761	1,167,880	3,548,081	(34,967,534)	14,392,626	3,812,678	18,988,561	9,942,206	141,694

**NYISO Virtual Trading
Average MWh per day**



NYISO Multi Hour Block Transactions Monthly Total MWh

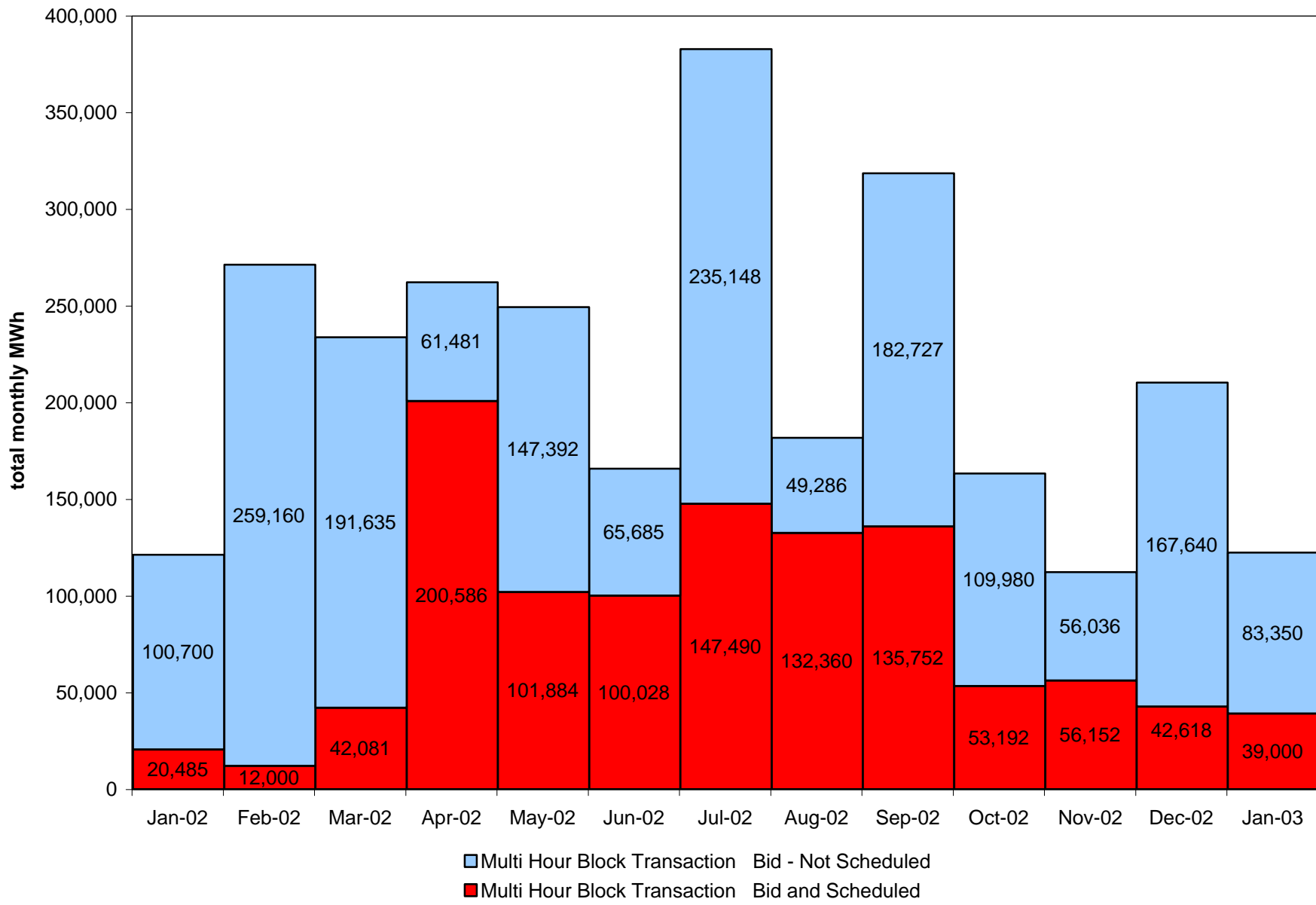


ABB Status

ABB Financial Status

- Achieved loan in December – Carries them through 2004
- Selling non-core assets
- Achieved agreement with counsel on CE pre-package bankruptcy

Critical Success Factors

- Terms and Conditions agreed to
- Escrow Agreement and Intellectual Property agreed to
- Partner involved to mitigate risk (HP or IBM)
- Project Plan completed
- Letter of Credit and Payment Schedule agreed to
- Royalty Agreement reached with ABB

Time Table for Resolution of the Demand Curve

- February 13: Management Committee approved the demand curve
- February 28: Notices of Appeal due to Dick Grossi, care of Bill;
- March 7: Supporting and opposing Motions due;
- March 11: Governance Committee meets (in person if hearing oral argument)
- March 11: Market Performance Committee meets (by phone) on the issue of the demand curve
- March 11 or 12: Board votes (by phone) on the appeal and, if finding for the appellant, whether to file the demand curve as a Section 206 filing.