
NYISO President's Report

*Management Committee Meeting
October 25, 2006*

Agenda #3

Report Items

- October 11, 2006 Software Release
- RNA Schedule Update
- Strategic Plan Update
- Price Correction Status Update
- Market Performance Highlights – For Information Only

October 11, 2006 Software Release

- ◆ The October Software Release was deployed to Production off-hours on October 11th
- ◆ Software Functionality Deployed to the Production System:
 - *A total of 49 detailed change tickets deployed encompassing 6 subsystems which included changes to the following:*
 - Modifications to SRE/OOM logic to apply correct mitigation thresholds
 - Changes to RTC postings for 30 min GT startups
 - MIS and BAS Database maintenance changes
 - New network database model to support projects
- ◆ Software deployed successfully with no resulting operational, reliability or market impacts
- ◆ Minimized impact to market participants by completing service disruptions off-hours – outage completed in 80 minutes. Less than the 2 hour outage announcement

RNA Schedule Update

- Initial Base Case Results Available Early Nov
- Issue Draft RNA for Review End of Nov
- ESPWG/TPAS Review of Draft Early Dec
- Operating Committee Review & Vote Late Dec
- Management Committee Review & Jan 2007
Vote*
- Board Review & Approval* Jan 2007
- Issuance of RNA End of Jan

*Note: Special MC & Board meetings to be scheduled

Strategic Plan Update

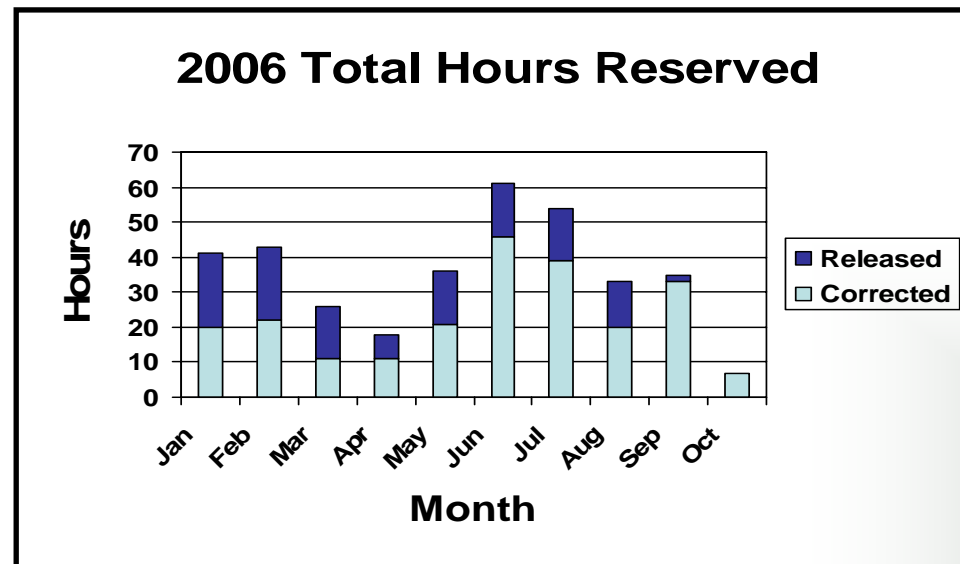
- ◆ 2007 – 2011 Strategic Plan was approved by NYISO Board of Directors on October 17, 2006
- ◆ The NYISO Board of Directors would like to thank both the TO's and the Multiple Intervenors for their comments on the Plan which was presented at the September MC meeting

Price Validation Status Update

- ◆ Correction rates improved in early October
 - *Price accuracy levels for first half of month over 98%*
 - *Modeling improvements implemented on October 11 will further improve capability to identify telemetry issues*
- ◆ Processes to provide timely corrections continue to be improved and formalized
 - *Performance improvements in producing timely corrections*
- ◆ Project to implement Enhanced Price Validation tools is proceeding on schedule

Price Correction Statistics

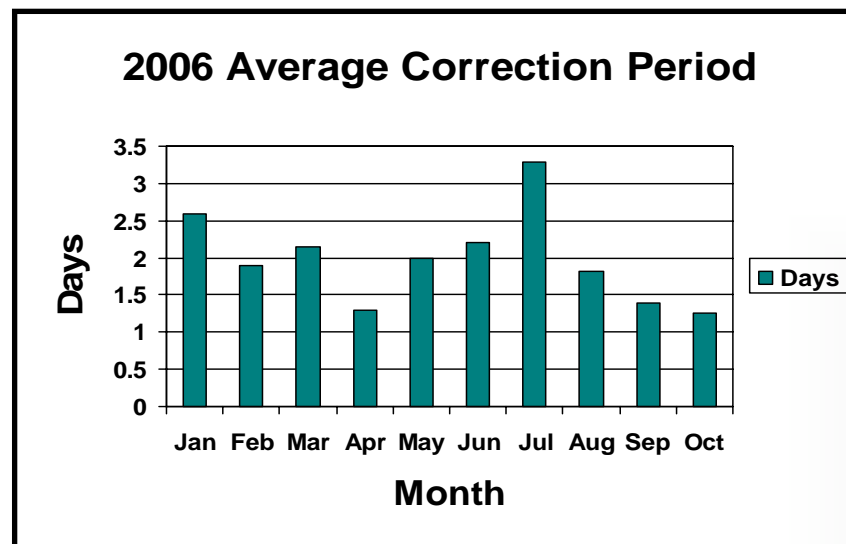
2006 YTD	Reservations	Corrections	Released	Tot. Hours
June	61	46	15	720
July	54	39	15	744
August	33	20	13	744
September	35	33	2	720
October*	7	7	0	360



* - Data through 15 October 2006

Price Correction Statistics (Cont.)

2006 YTD	Days Corrected	Avg	Max	Min
June	15	2.20	5	1
July	18	3.28	5	0
August	11	1.82	5	0
September	5	1.40	3	0
October*	4	1.25	2	1

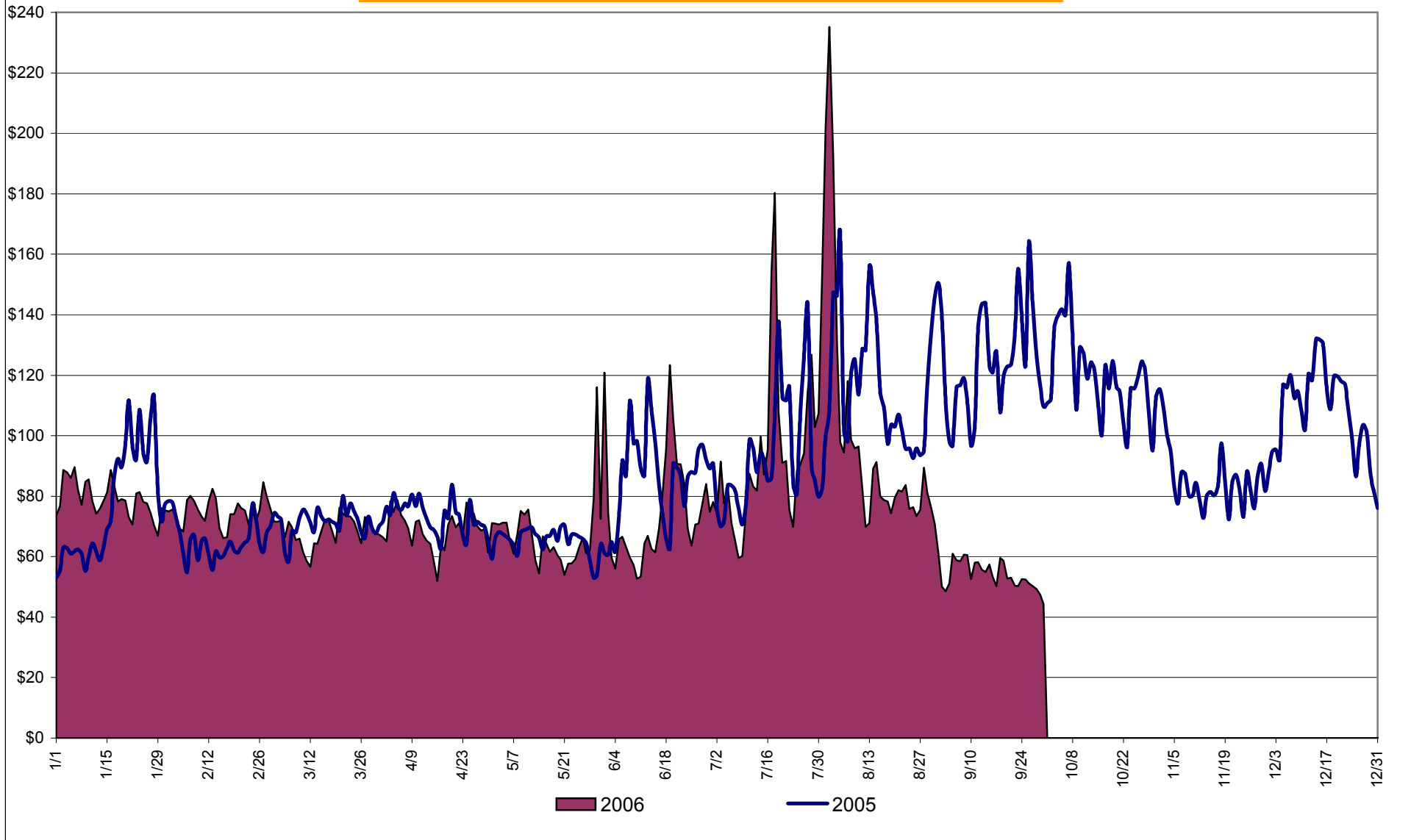


* - Data through 15 October 2006

Market Performance Highlights for September 2006

- September experienced lower loads and fuel prices that contributed to lower prices this month compared to August.
- LBMP for September is \$51.89/MWh, down from \$101.33/MWh in August.
 - Average monthly cost is \$54.38/MWh, down from \$105.42/MWh in August.
 - Day Ahead and Real Time LBMPs have decreased from August.
- Fuel prices are all down this month.
 - Kerosene is \$13.96/mmBTU, down from \$16.26/mmBTU in August
 - No. 2 Fuel Oil is \$12.12/mmBTU, down from \$14.12/mmBTU in August
 - No. 6 Fuel Oil is \$7.63/mmBTU, down from \$9.18/mmBTU in August
 - Natural Gas is \$5.14/mmBTU, down from \$7.86/mmBTU in August
- Uplift has decreased this month relative to August 2006.
 - Uplift (not including NYISO cost of operations) is \$0.46/MWh, down from \$2.28/MWh in August.
 - Total uplift (Schedule 1 components including NYISO Cost of Operations) decreased from \$46.7 million in August 2006 to \$14.7 million in September 2006.
- Regulation average prices, as well as ten and thirty minute reserve average prices, have decreased from August.
- The virtual market showed a decrease in activity from August.

Daily NYISO Average Cost/MWh (Energy & Ancillary Services)*
2005 Annual Average \$93.89/MWh
September 2005 YTD Average \$90.31/MWh
September 2006 YTD Average \$79.44/MWh



* Excludes ICAP payments.

NYISO Average Cost/MWh (Energy and Ancillary Services) *
from the LBMP Customer point of view

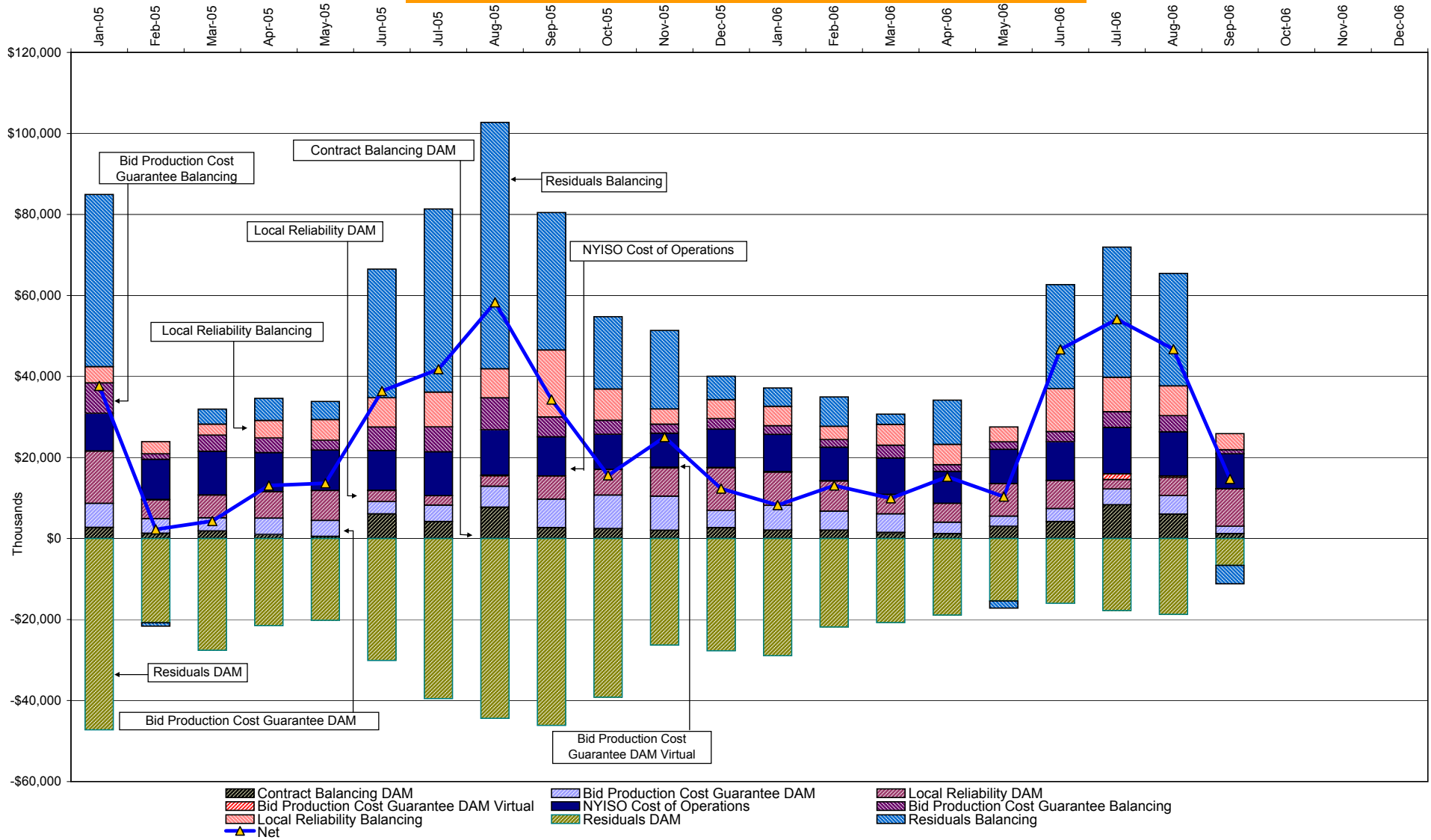
2006	<u>January</u>	<u>February</u>	<u>March</u>	<u>April</u>	<u>May</u>	<u>June</u>	<u>July</u>	<u>August</u>	<u>September</u>	<u>October</u>	<u>November</u>	<u>December</u>
LBMP	77.14	71.85	66.52	66.24	65.54	71.93	93.41	101.33	51.89			
NTAC	0.47	0.90	0.43	0.54	0.64	0.69	0.47	0.39	0.33			
Reserve	0.35	0.30	0.29	0.35	0.16	0.22	0.30	0.13	0.29			
Regulation	0.56	0.68	0.69	0.48	0.42	0.39	0.30	0.28	0.41			
NYISO Cost of Operations	0.64	0.64	0.64	0.64	0.64	0.64	0.64	0.64	0.64			
Uplift	(0.07)	0.37	0.09	0.63	0.14	2.60	2.42	2.28	0.46			
Voltage Support and Black Start	<u>0.36</u>	<u>0.36</u>	<u>0.36</u>	<u>0.36</u>	<u>0.36</u>	<u>0.36</u>	<u>0.36</u>	<u>0.36</u>	<u>0.36</u>			
Avg Monthly Cost	79.46	75.10	69.02	69.24	67.90	76.84	97.90	105.42	54.38			
Avg YTD Cost	79.46	77.39	74.49	73.24	72.19	73.06	77.89	82.10	79.44			

2005	<u>January</u>	<u>February</u>	<u>March</u>	<u>April</u>	<u>May</u>	<u>June</u>	<u>July</u>	<u>August</u>	<u>September</u>	<u>October</u>	<u>November</u>	<u>December</u>
LBMP	75.70	64.03	69.95	71.28	63.13	84.83	92.42	115.19	122.40	118.56	82.00	106.11
NTAC	0.42	0.36	0.23	0.49	0.40	0.58	0.46	0.25	0.10	0.03	0.39	0.64
Reserve	0.24	0.08	0.17	0.21	0.20	(0.01)	0.11	0.02	0.31	0.54	0.34	0.38
Regulation	0.32	0.40	0.34	0.22	0.25	0.20	0.15	0.06	0.41	0.64	0.70	0.53
NYISO Cost of Operations	0.63	0.79	0.79	0.79	0.79	0.63	0.63	0.63	0.63	0.63	0.63	0.63
Uplift	1.99	(0.59)	(0.47)	0.29	0.30	1.85	1.95	2.76	1.68	0.52	1.26	0.17
Voltage Support and Black Start	<u>0.39</u>	<u>0.39</u>	<u>0.39</u>	<u>0.39</u>	<u>0.39</u>	<u>0.39</u>	<u>0.39</u>	<u>0.39</u>	<u>0.39</u>	<u>0.39</u>	<u>0.39</u>	<u>0.39</u>
Avg Monthly Cost	79.70	65.45	71.38	73.67	65.46	88.48	96.09	119.29	125.93	121.32	85.72	108.85
Avg YTD Cost	79.70	73.25	72.61	72.86	71.56	74.91	78.90	85.52	90.31	93.10	92.53	93.89

* Excludes ICAP payments.

These numbers reflect the rebilling of prior periods.

NYISO Dollar Flows - Uplift - OATT Schedule 1 components



DAM Contract Balancing amounts are for payments made to generating units to make them whole for being dispatched below their Day-Ahead schedule, as a result of out-of-merit dispatches.
 DAM Bid Production Cost Guarantees for Virtual Transactions are included in the chart and are shown from the inception of Virtual Transactions. These values are small and cannot be identified on the chart.
 DAM residuals are revenue charged or returned to customers due to the under or over collection of funds.

NYISO Markets Transactions

<u>2006</u>	<u>January</u>	<u>February</u>	<u>March</u>	<u>April</u>	<u>May</u>	<u>June</u>	<u>July</u>	<u>August</u>	<u>September</u>	<u>October</u>	<u>November</u>	<u>December</u>
Day Ahead Market MWh	13,877,416	12,532,754	13,392,627	11,860,369	12,637,299	14,251,897	17,302,066	16,604,505	13,110,510			
DAM LSE Internal LBMP Energy Sales	46%	47%	48%	50%	46%	48%	51%	50%	46%			
DAM External TC LBMP Energy Sales	4%	3%	2%	2%	3%	3%	5%	5%	3%			
DAM Bilateral - Internal Bilaterals	47%	47%	45%	45%	47%	45%	41%	42%	48%			
DAM Bilateral - Import/Non-LBMP Market Bilaterals	2%	2%	2%	2%	2%	2%	1%	2%	2%			
DAM Bilateral - Export/Non-LBMP Market Bilaterals	1%	1%	2%	1%	1%	1%	2%	1%	1%			
DAM Bilateral - Wheel Through Bilaterals	0%	0%	0%	0%	0%	0%	0%	0%	0%			
Balancing Energy Market MWh	300,904	322,333	558,199	396,791	486,316	575,072	471,866	339,367	233,201			
Balancing Energy LSE Internal LBMP Energy Sales	3%	22%	31%	26%	45%	34%	49%	38%	-16%			
Balancing Energy External TC LBMP Energy Sales	86%	74%	66%	68%	48%	58%	62%	63%	89%			
Balancing Energy Bilateral - Internal Bilaterals	5%	2%	2%	2%	2%	5%	1%	2%	-1%			
Balancing Energy Bilateral - Import/Non-LBMP Market Bilaterals	2%	1%	0%	0%	3%	0%	0%	0%	3%			
Balancing Energy Bilateral - Export/Non-LBMP Market Bilaterals	1%	1%	1%	1%	0%	0%	-12%	1%	1%			
Balancing Energy Bilateral - Wheel Through Bilaterals	4%	1%	0%	3%	2%	3%	0%	-3%	24%			
Transactions Summary												
LBMP	51%	50%	52%	53%	51%	53%	57%	56%	49%			
Internal Bilaterals	46%	46%	43%	43%	45%	44%	40%	42%	47%			
Import Bilaterals	2%	2%	2%	2%	2%	2%	1%	1%	2%			
Export Bilaterals	1%	1%	2%	1%	1%	1%	1%	1%	1%			
Wheels Through	0%	0%	0%	0%	0%	0%	0%	0%	0%			
Market Share of Total Load												
Day Ahead Market	97.9%	97.5%	96.0%	96.8%	96.3%	96.1%	97.3%	98.0%	98.3%			
Balancing Energy †	2.1%	2.5%	4.0%	3.2%	3.7%	3.9%	2.7%	2.0%	1.7%			
Total MWh	14,178,320	12,855,086	13,950,825	12,257,160	13,123,615	14,826,969	17,773,932	16,943,872	13,343,711			
Average Daily Energy Sendout/Month GWh	439	444	428	395	407	471	528	518	430			
2005	<u>January</u>	<u>February</u>	<u>March</u>	<u>April</u>	<u>May</u>	<u>June</u>	<u>July</u>	<u>August</u>	<u>September</u>	<u>October</u>	<u>November</u>	<u>December</u>
Day Ahead Market MWh	14,281,481	12,510,148	13,410,579	12,215,628	12,773,478	14,981,363	16,344,465	16,587,663	14,706,243	13,309,658	12,893,992	14,418,648
DAM LSE Internal LBMP Energy Sales	48%	49%	52%	52%	45%	50%	53%	52%	49%	46%	45%	46%
DAM External TC LBMP Energy Sales	3%	1%	1%	1%	3%	3%	3%	4%	6%	4%	4%	5%
DAM Bilateral - Internal Bilaterals	47%	48%	45%	44%	50%	44%	42%	42%	43%	47%	48%	46%
DAM Bilateral - Import/Non-LBMP Market Bilaterals	1%	1%	1%	0%	0%	1%	1%	1%	2%	2%	2%	2%
DAM Bilateral - Export/Non-LBMP Market Bilaterals	1%	1%	1%	1%	2%	1%	1%	1%	1%	1%	1%	1%
DAM Bilateral - Wheel Through Bilaterals	1%	0%	1%	0%	0%	1%	0%	0%	0%	0%	0%	0%
Balancing Energy Market MWh	414,096	123,162	329,431	58,175	-101,200	582,604	796,586	1,107,346	544,610	384,383	365,677	515,733
Balancing Energy LSE Internal LBMP Energy Sales	77%	-39%	22%	-336%	-307%	46%	73%	73%	33%	4%	-15%	41%
Balancing Energy External TC LBMP Energy Sales	43%	161%	77%	463%	208%	45%	23%	21%	51%	93%	100%	49%
Balancing Energy Bilateral - Internal Bilaterals	-13%	-9%	7%	-27%	5%	5%	6%	6%	13%	4%	13%	11%
Balancing Energy Bilateral - Import/Non-LBMP Market Bilaterals	0%	0%	0%	0%	0%	0%	0%	0%	0%	0%	0%	0%
Balancing Energy Bilateral - Export/Non-LBMP Market Bilaterals	1%	0%	0%	2%	2%	1%	1%	0%	0%	1%	1%	1%
Balancing Energy Bilateral - Wheel Through Bilaterals	-8%	-13%	-5%	-2%	-8%	3%	-2%	1%	3%	-1%	2%	-1%
Transactions Summary												
LBMP	53%	51%	54%	54%	47%	54%	58%	58%	56%	52%	50%	52%
Internal Bilaterals	45%	47%	44%	44%	50%	43%	40%	39%	42%	45%	47%	45%
Import Bilaterals	1%	1%	1%	0%	0%	1%	1%	1%	1%	2%	2%	2%
Export Bilaterals	1%	1%	1%	1%	2%	1%	1%	1%	1%	1%	1%	1%
Wheels Through	0%	0%	0%	0%	0%	1%	0%	0%	0%	0%	0%	0%
Market Share of Total Load												
Day Ahead Market	97.2%	99.0%	97.6%	99.5%	100.8%	96.3%	95.4%	93.7%	96.4%	97.2%	97.2%	96.5%
Balancing Energy †	2.8%	1.0%	2.4%	0.5%	-0.8% *	3.7%	4.6%	6.3%	3.6%	2.8%	2.8%	3.5%
Total MWh	14,695,577	12,633,310	13,740,011	12,273,803	12,672,278	15,563,968	17,141,051	17,695,009	15,250,854	13,694,041	13,259,669	14,934,381
Average Daily Energy Sendout/Month GWh	462	447	433	399	395	501	536	549	478	418	419	454

† Balancing Energy: Load(MW) purchased at Real Time LBMP.

* The signs for the detail section intuitively reflect the direction of power flow eliminating the use of double negatives when Balancing Energy is negative.

Notes: Percent totals may not equal 100% due to rounding.
Virtual Transactions are not reflected in this chart.

NYISO Markets 2006 Energy Statistics

	<u>January</u>	<u>February</u>	<u>March</u>	<u>April</u>	<u>May</u>	<u>June</u>	<u>July</u>	<u>August</u>	<u>September</u>	<u>October</u>	<u>November</u>	<u>December</u>
<u>DAY AHEAD LBMP</u>												
Price *	\$73.28	\$68.90	\$64.31	\$63.21	\$59.31	\$64.40	\$83.27	\$88.13	\$48.97			
Standard Deviation	\$15.03	\$12.95	\$11.95	\$13.28	\$13.70	\$22.66	\$40.24	\$50.58	\$12.19			
Load Weighted Price **	\$75.09	\$70.34	\$65.74	\$64.93	\$61.29	\$68.02	\$89.27	\$95.39	\$50.76			
<u>RTC *** LBMP</u>												
Price *	\$70.25	\$63.41	\$63.04	\$62.39	\$60.81	\$61.60	\$77.27	\$91.21	\$47.92			
Standard Deviation	\$26.63	\$15.86	\$20.50	\$18.82	\$37.26	\$39.82	\$56.30	\$107.73	\$16.64			
Load Weighted Price **	\$71.94	\$64.44	\$64.43	\$63.93	\$63.75	\$65.15	\$83.30	\$101.89	\$49.51			
<u>REAL TIME LBMP</u>												
Price *	\$70.91	\$63.96	\$63.66	\$62.35	\$63.29	\$61.23	\$78.58	\$89.95	\$47.09			
Standard Deviation	\$31.34	\$20.06	\$23.01	\$20.98	\$62.40	\$52.63	\$66.83	\$97.29	\$17.93			
Load Weighted Price **	\$73.18	\$65.38	\$65.38	\$64.13	\$68.66	\$66.47	\$86.37	\$102.03	\$48.95			
Average Daily Energy Sendout/Month GWh	439	444	428	395	407	471	528	518	430			

NYISO Markets 2005 Energy Statistics

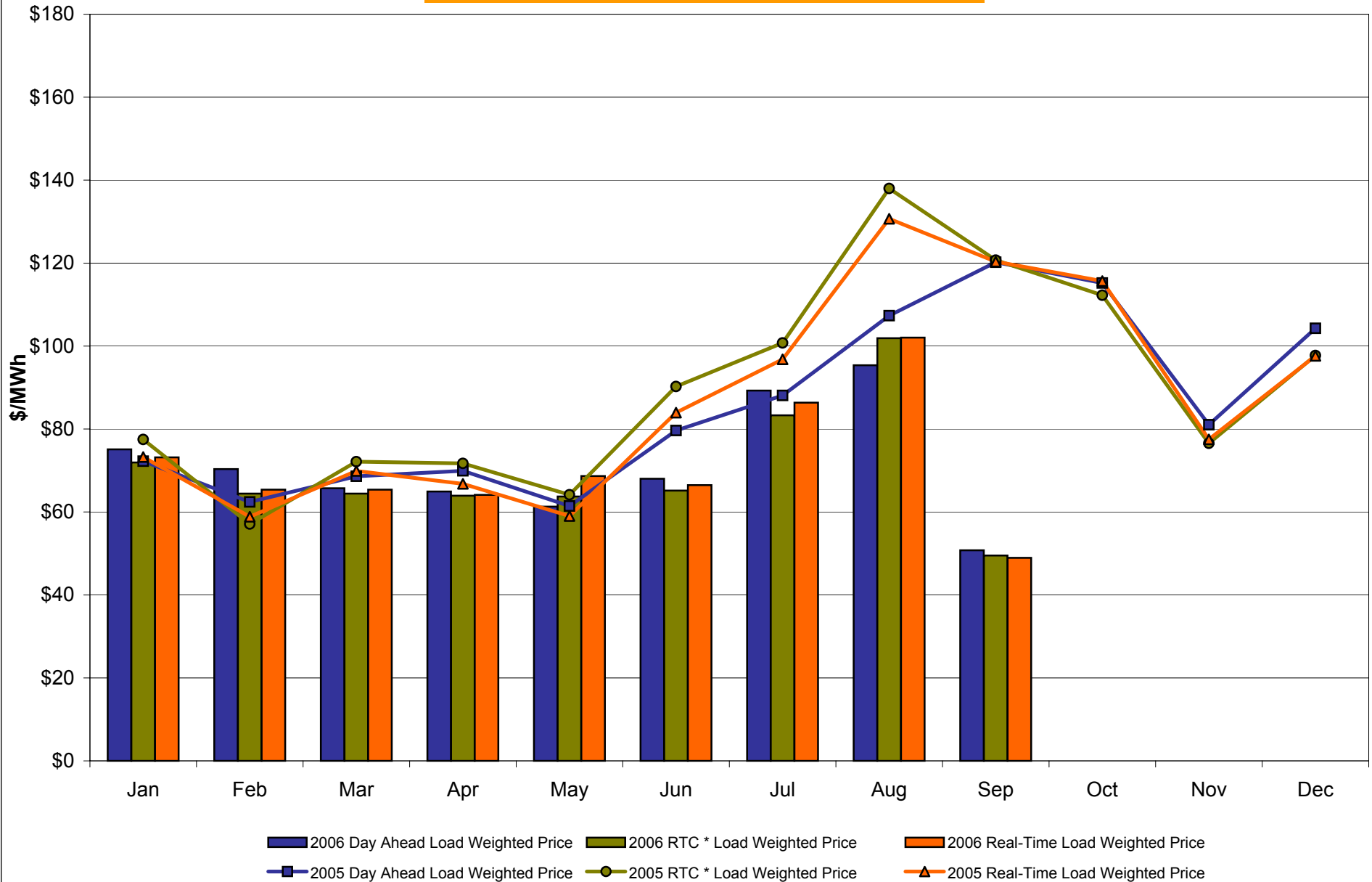
	<u>January</u>	<u>February</u>	<u>March</u>	<u>April</u>	<u>May</u>	<u>June</u>	<u>July</u>	<u>August</u>	<u>September</u>	<u>October</u>	<u>November</u>	<u>December</u>
<u>DAY AHEAD LBMP</u>												
Price *	\$69.55	\$61.04	\$67.17	\$68.14	\$59.59	\$75.49	\$83.75	\$102.33	\$115.47	\$110.99	\$78.56	\$101.24
Standard Deviation	\$23.42	\$12.00	\$12.49	\$14.20	\$13.39	\$22.85	\$24.32	\$31.65	\$32.31	\$28.39	\$21.07	\$26.32
Load Weighted Price **	\$72.26	\$62.42	\$68.61	\$69.92	\$61.44	\$79.64	\$88.09	\$107.34	\$120.22	\$115.20	\$81.05	\$104.27
<u>RTC *** LBMP</u>												
Price *	\$74.47	\$55.93	\$70.40	\$69.92	\$61.59	\$85.42	\$94.96	\$129.60	\$116.00	\$108.53	\$74.02	\$94.86
Standard Deviation	\$44.64	\$16.80	\$26.13	\$23.51	\$59.20	\$62.91	\$68.35	\$116.09	\$44.35	\$42.95	\$33.43	\$40.18
Load Weighted Price **	\$77.48	\$57.10	\$72.12	\$71.72	\$64.16	\$90.25	\$100.76	\$138.00	\$120.72	\$112.25	\$76.57	\$97.73
<u>REAL TIME LBMP</u>												
Price *	\$70.25	\$57.57	\$68.04	\$64.95	\$57.20	\$77.75	\$90.48	\$122.21	\$114.94	\$110.90	\$74.62	\$94.16
Standard Deviation	\$31.79	\$20.48	\$32.50	\$26.06	\$42.34	\$55.70	\$72.95	\$103.00	\$42.92	\$55.35	\$36.61	\$40.67
Load Weighted Price **	\$73.26	\$58.86	\$69.88	\$66.77	\$59.04	\$83.96	\$96.82	\$130.69	\$120.36	\$115.69	\$77.51	\$97.64
Average Daily Energy Sendout/Month GWh	462	447	433	399	395	501	536	549	478	418	419	454

* Average zonal load weighted prices.

** Average zonal load weighted prices, load weighted in each hour.

*** Referred to as RTC beginning February 2005. Prior to February 2005 known as BME or Hour Ahead Market (HAM).

NYISO Monthly Average Internal LBMPs 2005 - 2006



* Referred to as RTC beginning February 2005.
Prior to February 2005 known as BME or Hour Ahead Market (HAM).

September 2006 Zonal LBMP Statistics for NYISO (\$/MWh)

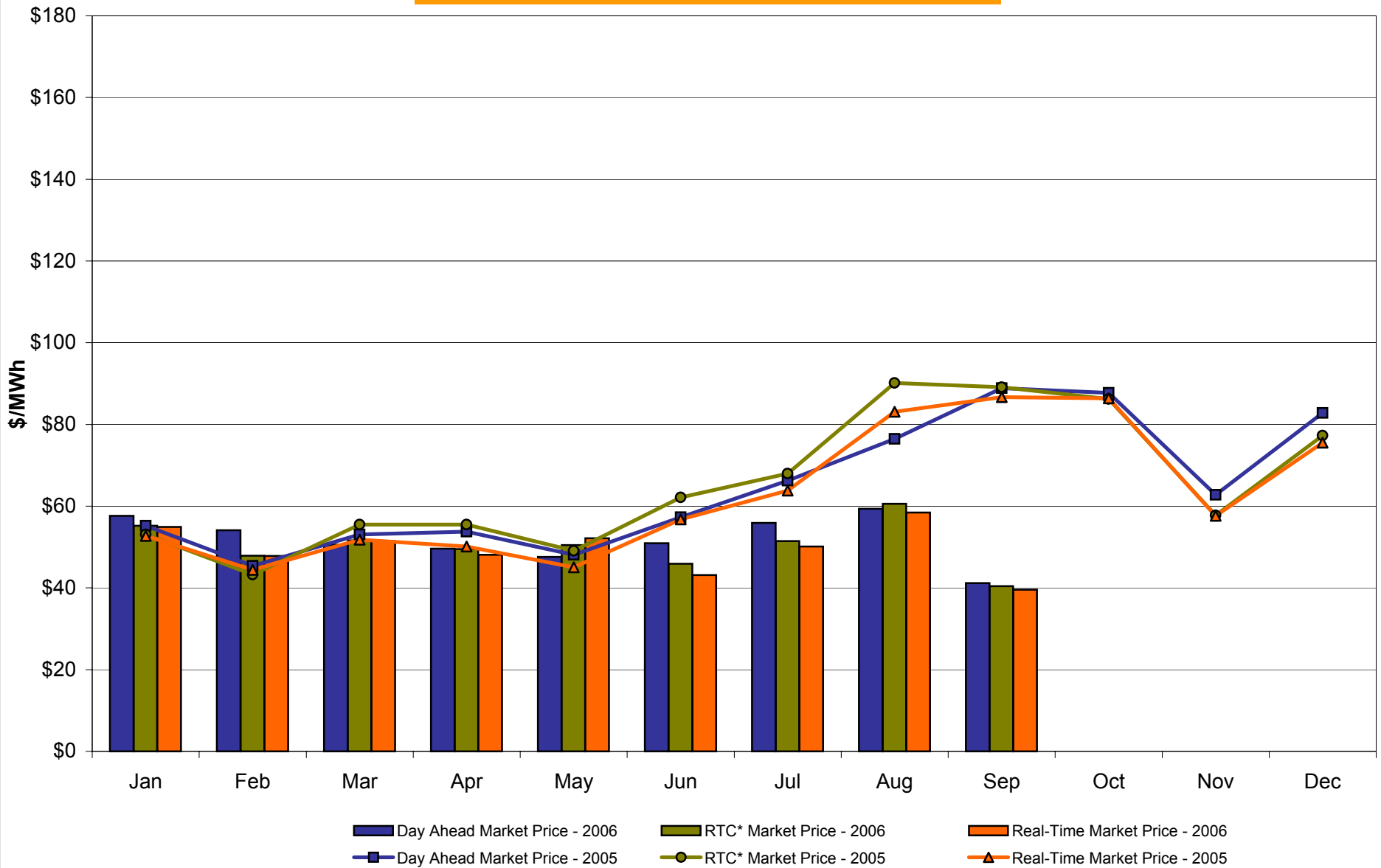
	<u>WEST Zone A</u>	<u>GENESEE Zone B</u>	<u>NORTH Zone D</u>	<u>CENTRAL Zone C</u>	<u>MOHAWK VALLEY Zone E</u>	<u>CAPITAL Zone F</u>	<u>HUDSON VALLEY Zone G</u>	<u>MILLWOOD Zone H</u>	<u>DUNWOODIE Zone I</u>	<u>NEW YORK CITY Zone J</u>	<u>LONG ISLAND Zone K</u>
<u>DAY AHEAD LBMP</u>											
Unweighted Price *	41.17	42.79	43.95	43.23	45.11	46.46	48.11	48.45	48.54	51.24	59.01
Standard Deviation	9.01	9.62	9.64	9.76	10.26	10.60	11.60	11.81	11.82	14.19	16.22
<u>RTC** LBMP</u>											
Unweighted Price *	40.43	42.09	43.89	43.02	44.86	46.12	47.24	47.28	47.36	50.08	56.52
Standard Deviation	14.18	14.85	15.38	15.30	16.00	16.62	17.01	17.03	17.05	18.40	21.13
<u>REAL TIME LBMP</u>											
Unweighted Price *	39.57	41.16	42.92	42.08	43.87	44.99	46.13	46.17	46.25	49.17	57.02
Standard Deviation	15.36	15.98	16.44	16.35	17.03	17.53	18.07	18.10	18.13	19.94	26.51
	<u>ONTARIO IESO Zone O</u>	<u>HYDRO QUEBEC Zone M</u>	<u>PJM Zone P</u>	<u>NEW ENGLAND Zone N</u>	<u>CROSS SOUND CABLE Controllable Line</u>						
<u>DAY AHEAD LBMP</u>											
Unweighted Price *	40.62	44.17	40.57	46.85	58.46						
Standard Deviation	8.66	9.69	10.10	10.86	16.09						
<u>RTC** LBMP</u>											
Unweighted Price *	39.34	43.52	39.45	45.48	55.30						
Standard Deviation	10.22	11.06	11.89	12.19	18.28						
<u>REAL TIME LBMP</u>											
Unweighted Price *	39.13	43.13	39.23	45.21	57.30						
Standard Deviation	14.96	15.69	15.97	17.31	28.22						

* Straight zonal LBMP averages

** Referred to as RTC beginning February 2005

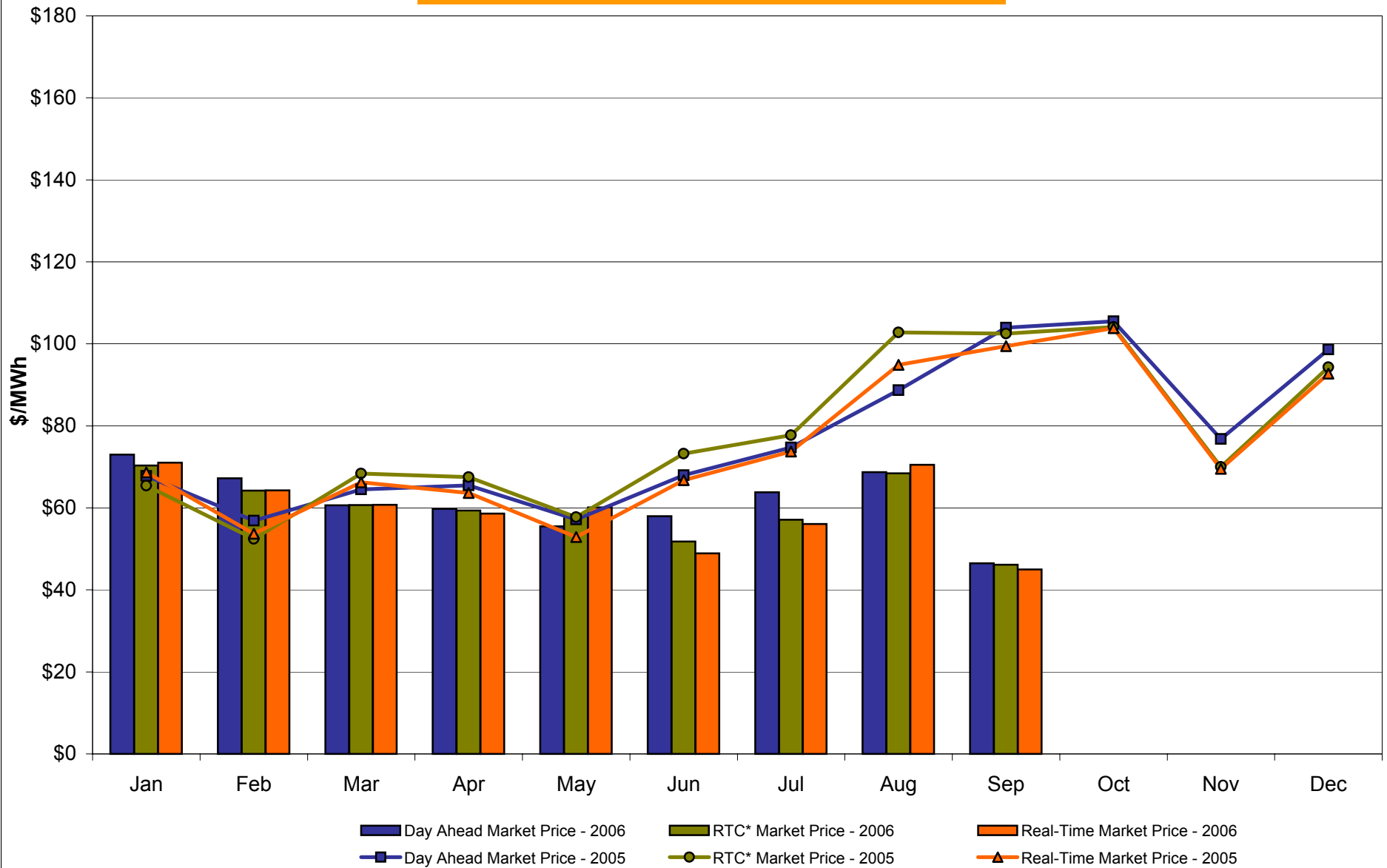
Prior to February 2005 known as BME or Hour Ahead Market (HAM)

West Zone A Monthly Average LBMP Prices 2005 - 2006



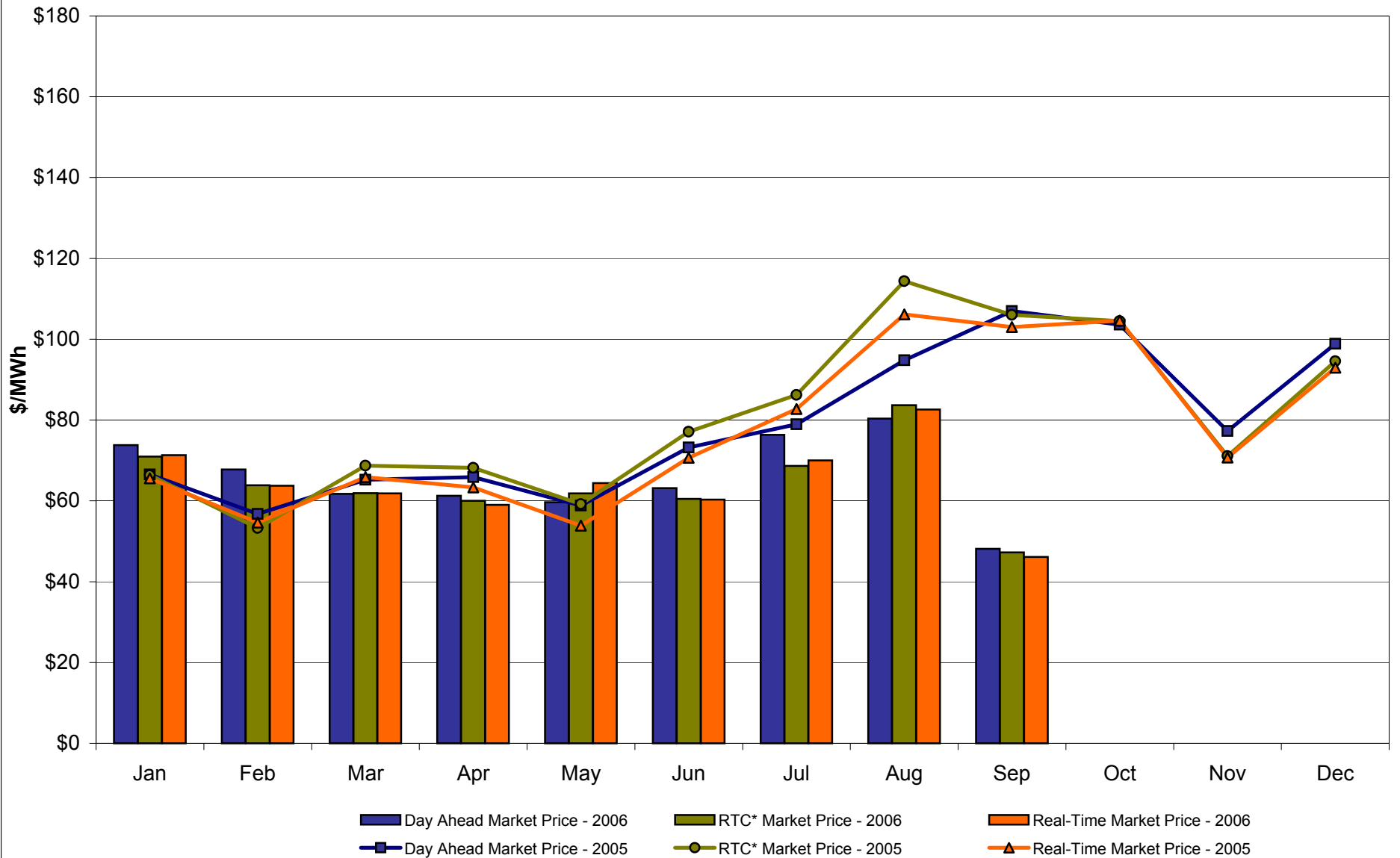
* Referred to as RTC beginning February 2005.
Prior to February 2005 known as BME or Hour Ahead Market (HAM).

Capital Zone F Monthly Average LBMP Prices 2005 - 2006



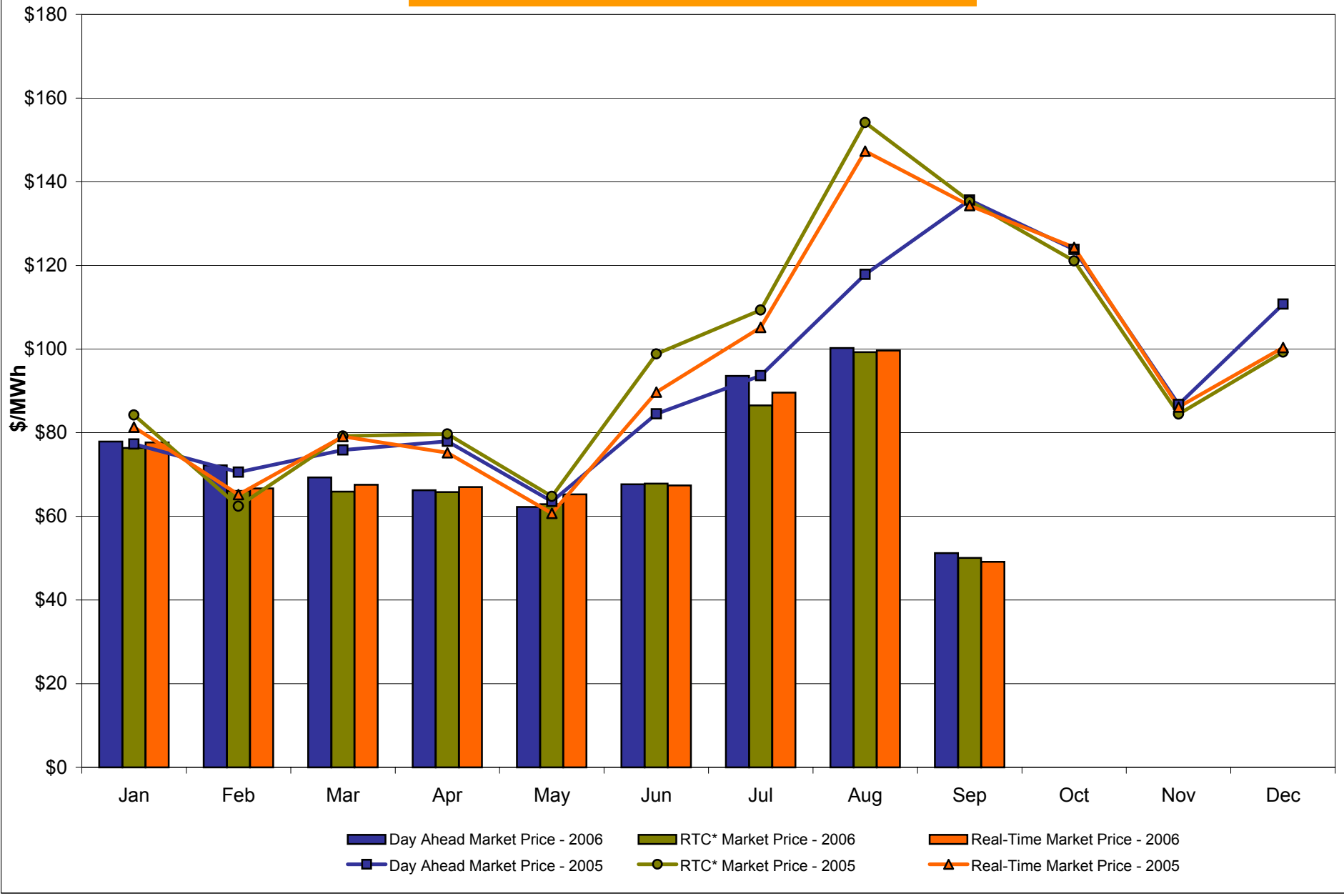
* Referred to as RTC beginning February 2005.
Prior to February 2005 known as BME or Hour Ahead Market (HAM).

Hudson Valley Zone G Monthly Average LBMP Prices 2005 - 2006



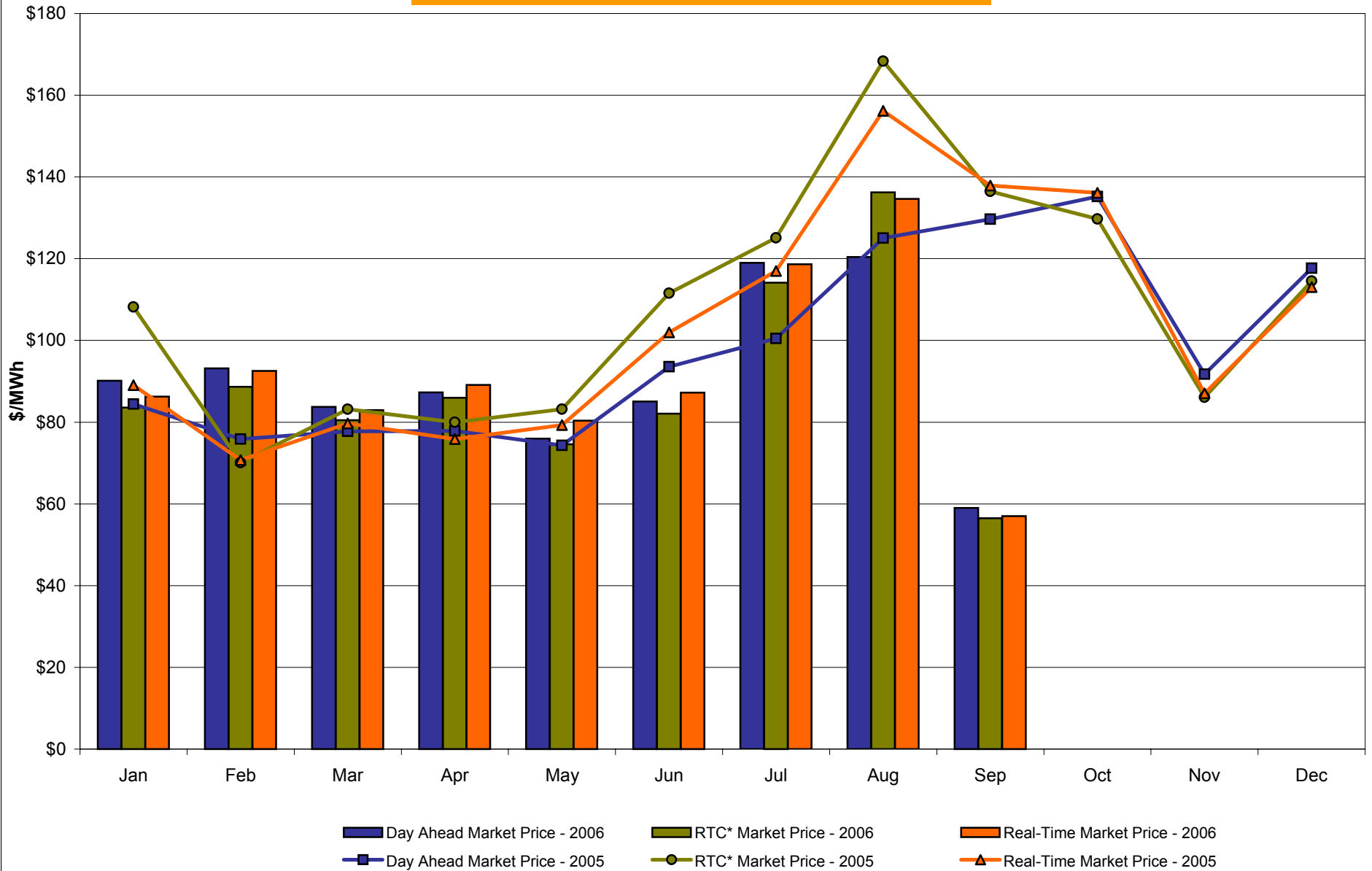
* Referred to as RTC beginning February 2005.
Prior to February 2005 known as BME or Hour Ahead Market (HAM).

NYC Zone J Monthly Average LBMP Prices 2005 - 2006



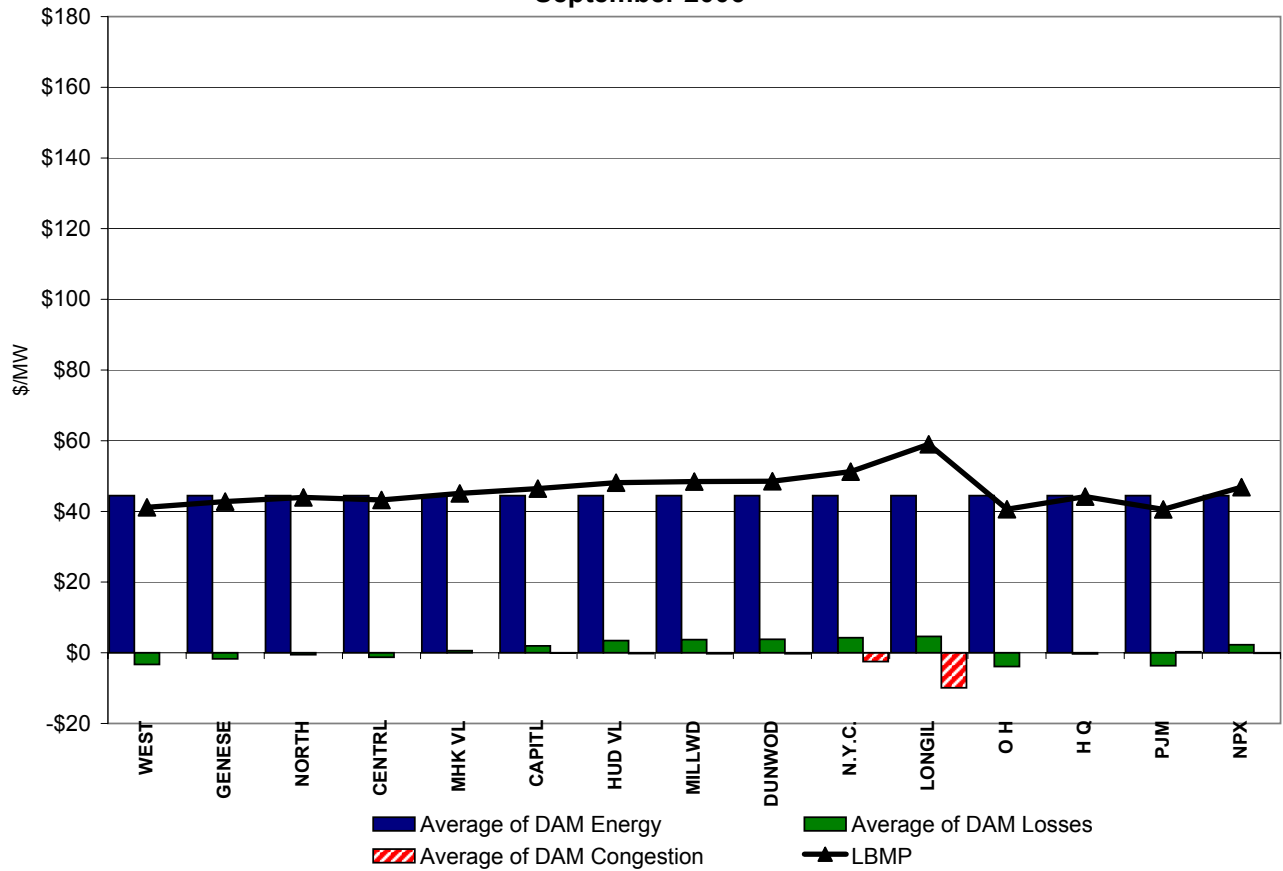
* Referred to as RTC beginning February 2005.
 Prior to February 2005 known as BME or Hour Ahead Market (HAM).

Long Island Zone K Monthly Average LBMP Prices 2005 - 2006

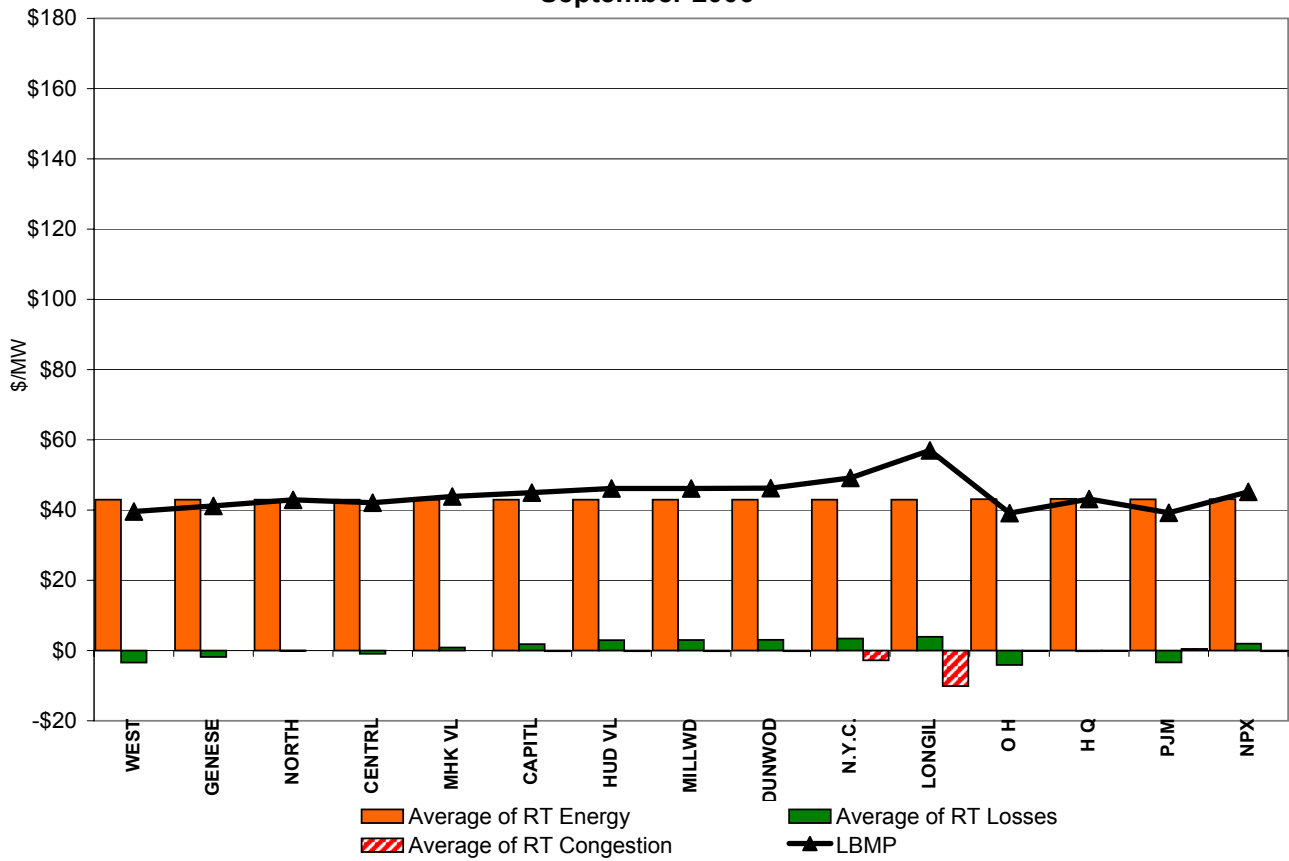


* Referred to as RTC beginning February 2005.
Prior to February 2005 known as BME or Hour Ahead Market (HAM).

**DAM Zonal Unweighted Monthly Average LBMP Components
September 2006**

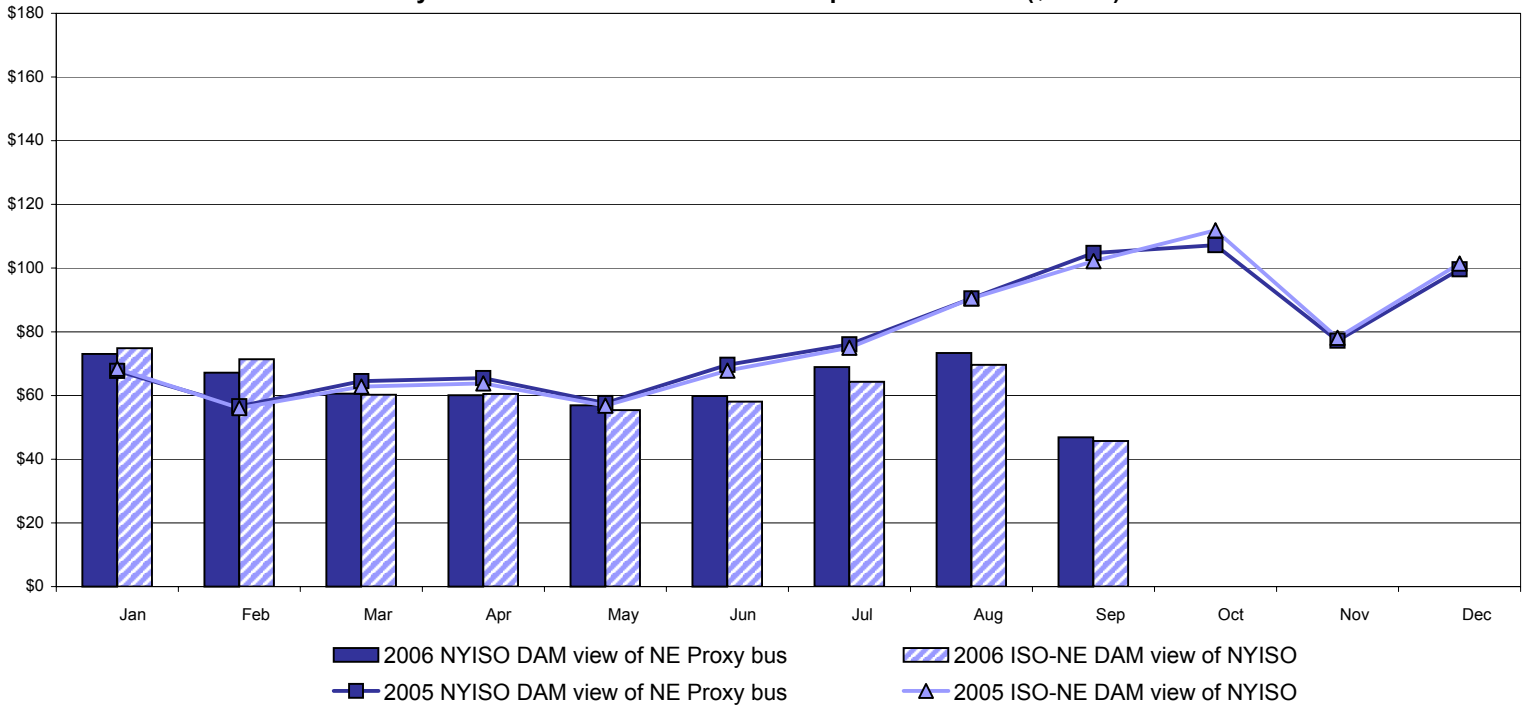


**RT Zonal Unweighted Monthly Average LBMP Components
September 2006**

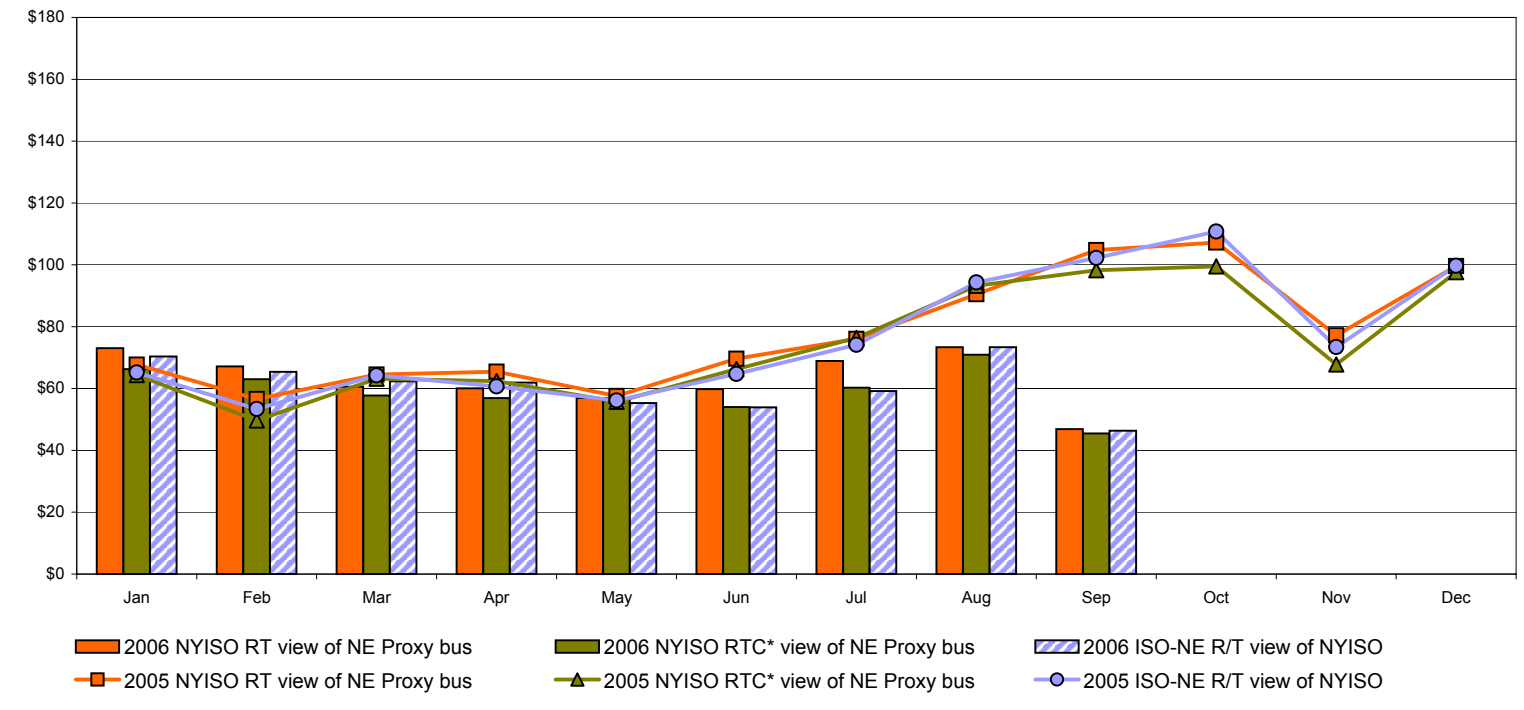


External Comparison ISO-New England

Day Ahead Market External Zone Comparison: ISO-NE (\$/MWh)



Real Time Market External Zone Comparison: ISO-NE (\$/MWh)



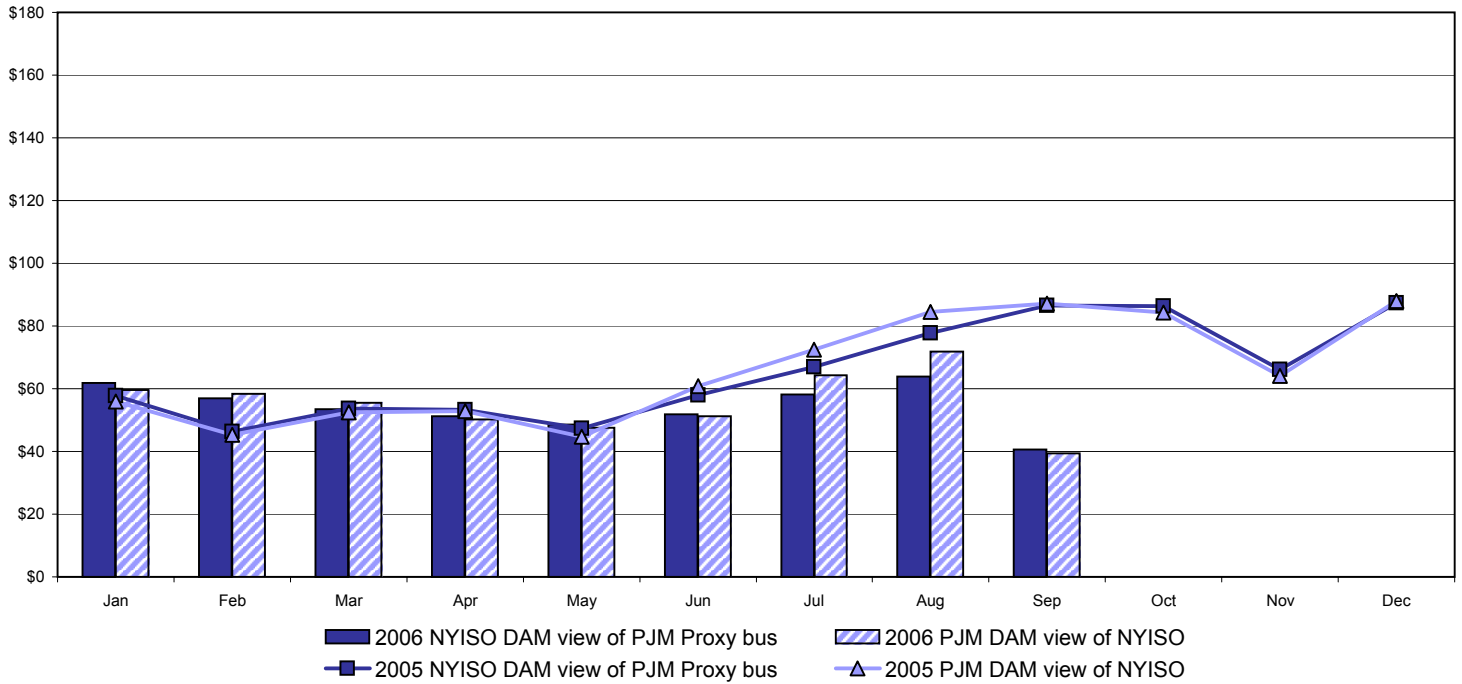
Note:

ISO-NE Forecast is an advisory posting @ 18:00 day before.
 The DAM and R/T prices at the Roseton interface are used for ISO-NE.
 The DAM and R/T prices at the SandyPond interface are used for NYISO.

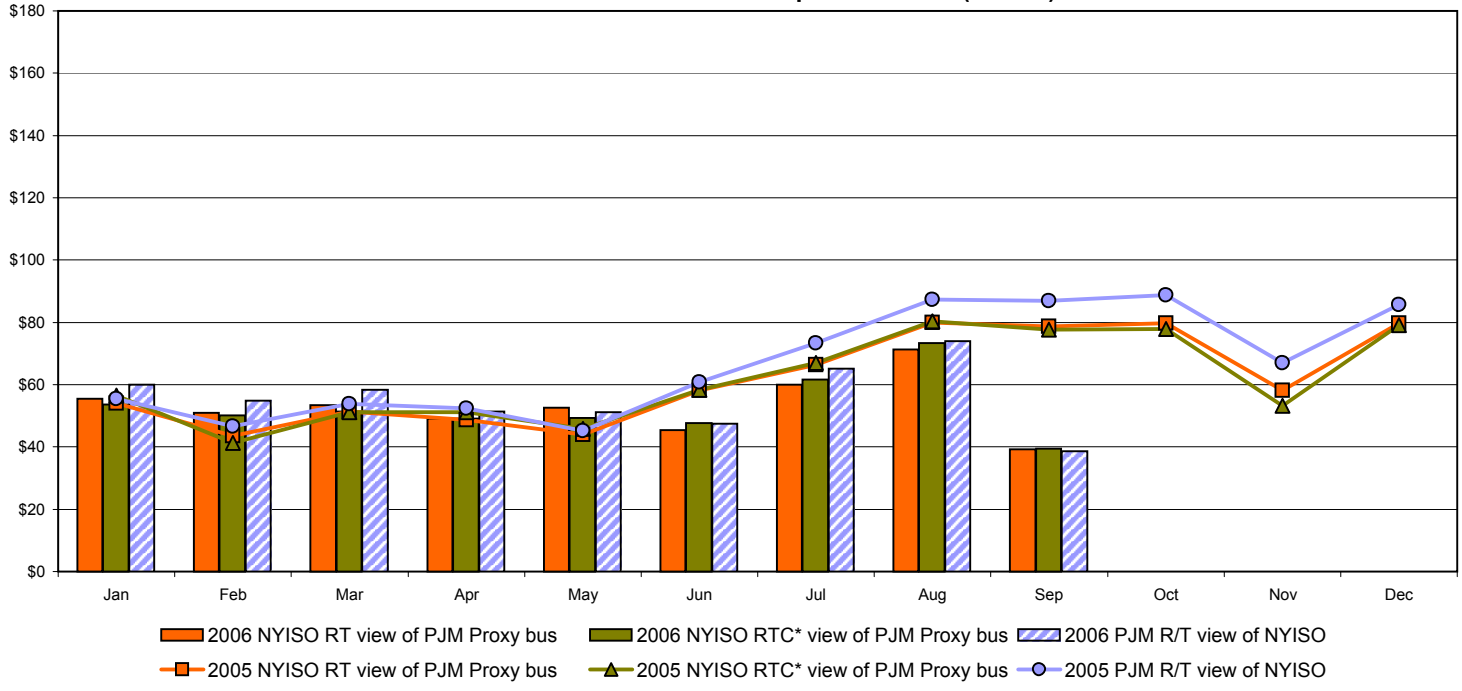
* Referred to as RTC beginning February 2005.
 Prior to February 2005 known as BME or Hour Ahead Market (HAM).

External Comparison PJM

Day Ahead Market External Zone Comparison - PJM (\$/MWh)

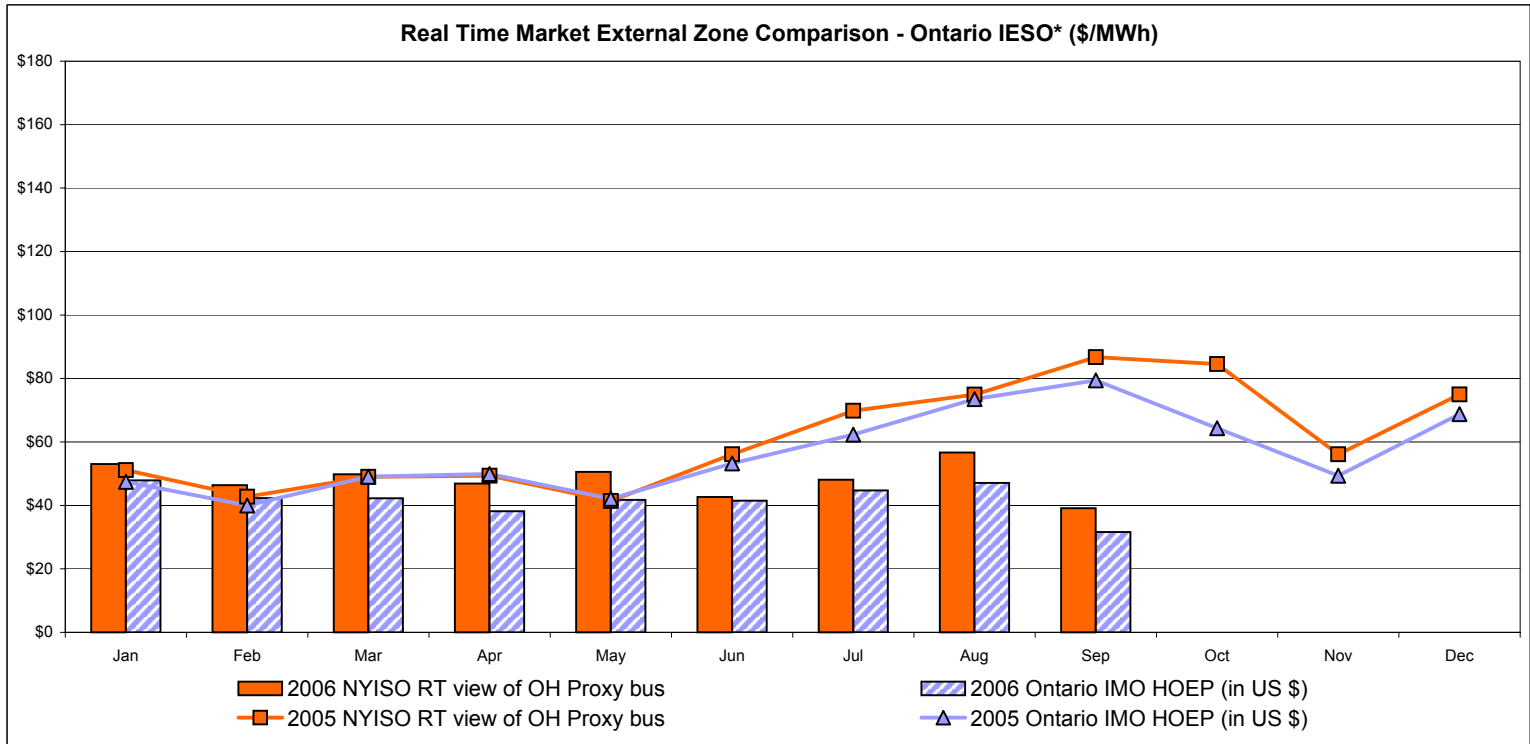
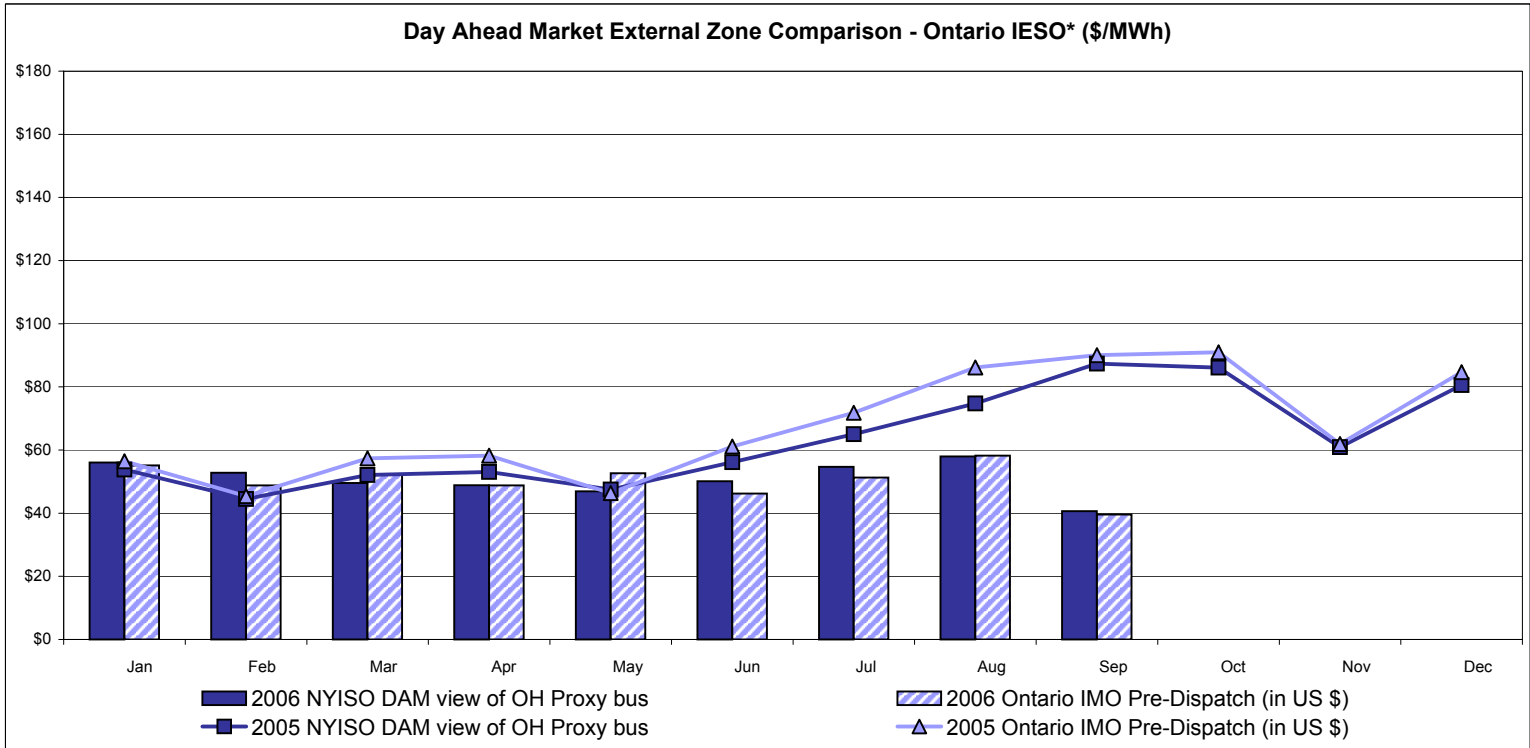


Real Time Market External Zone Comparison - PJM (\$/MWh)



* Referred to as RTC beginning February 2005.
Prior to February 2005 known as BME or Hour Ahead Market (HAM).

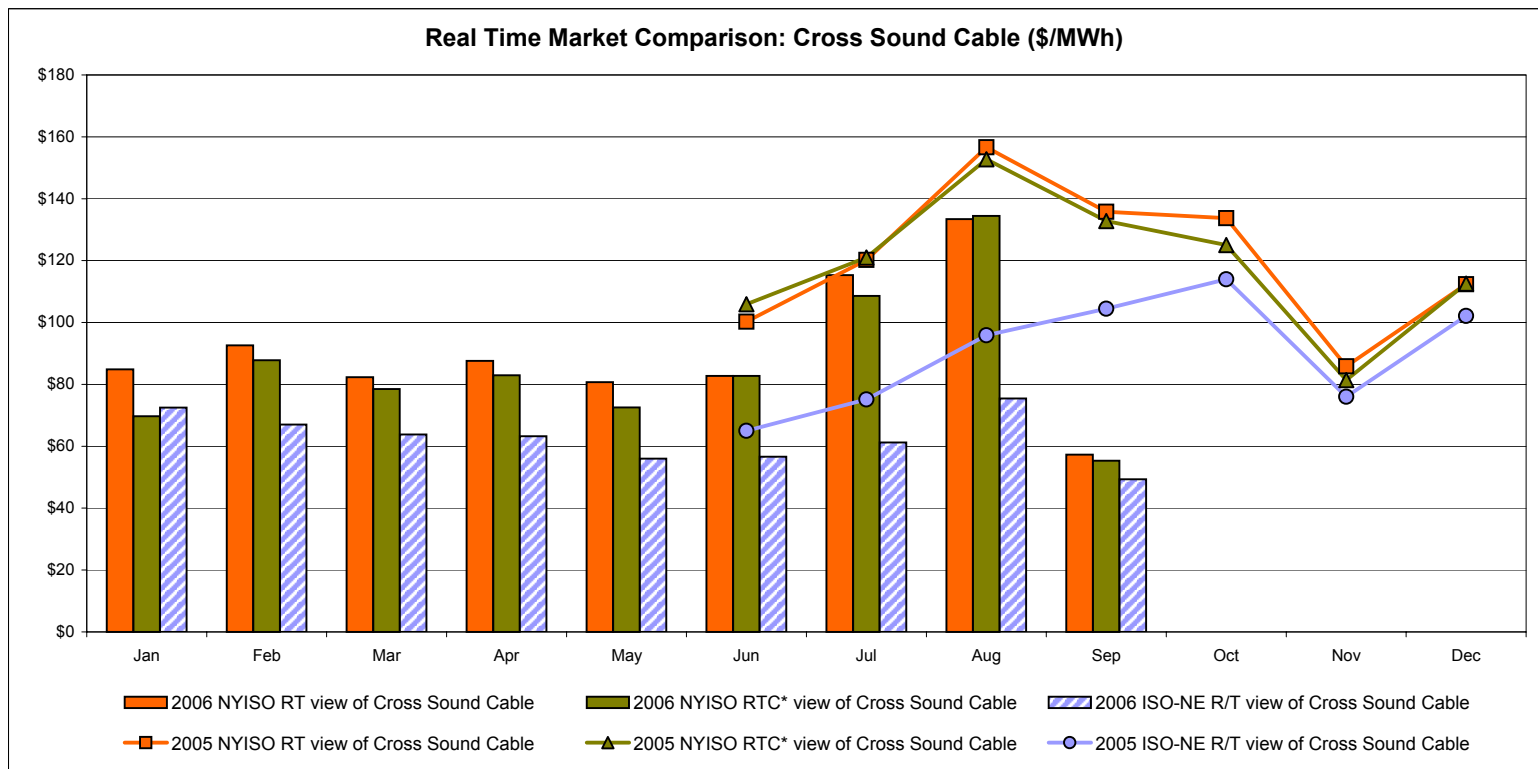
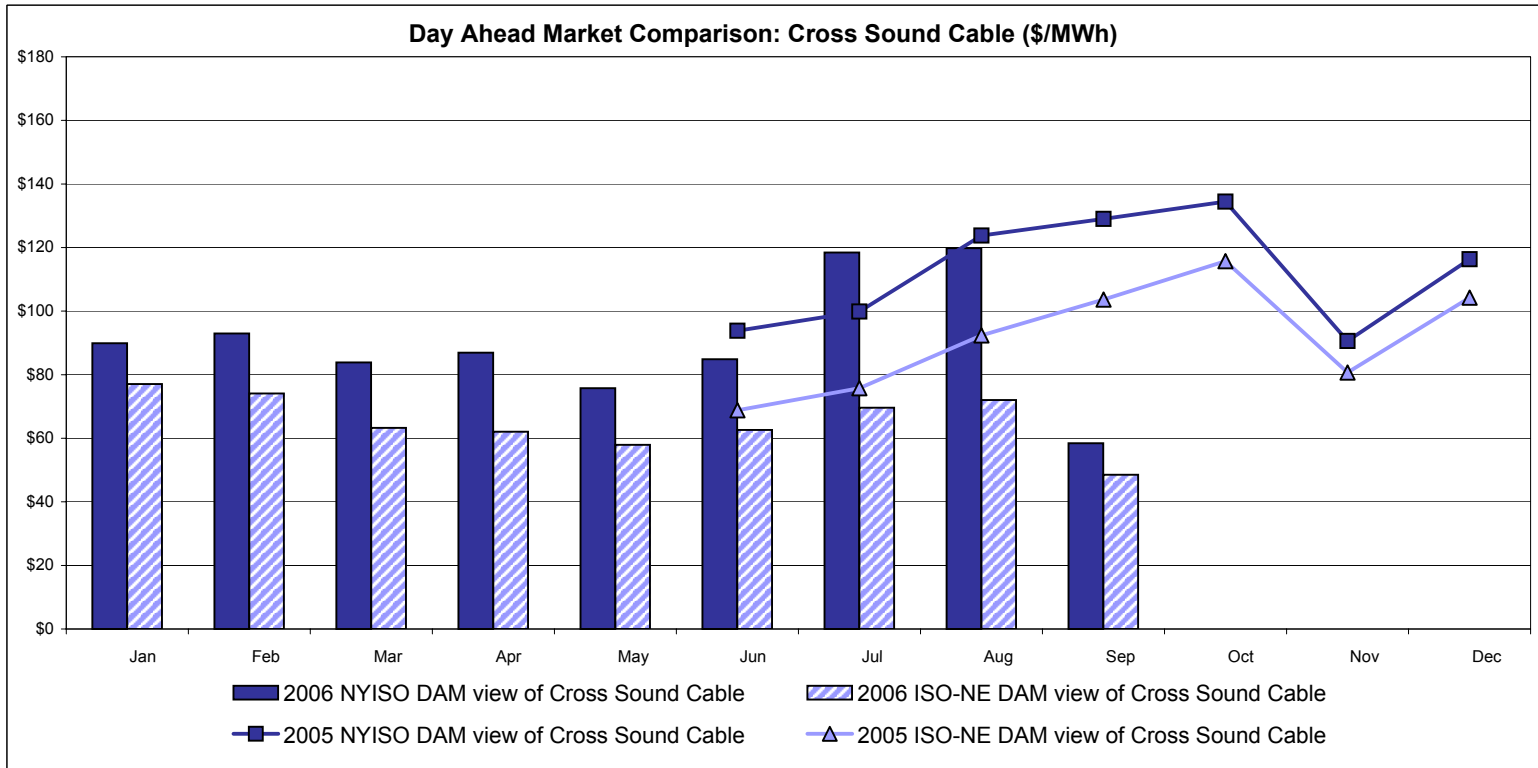
External Comparison Ontario IESO*



Notes: Exchange factor used for September 2006 was .90 to US \$
 HOEP: Hourly Ontario Energy Price
 Pre-Dispatch: Projected Energy Price

* Independent Electricity System Operator formerly known as the Independent Electricity Market Operator (IMO).

External Controllable Line: Cross Sound Cable (New England)



Note:

ISO-NE Forecast is an advisory posting @ 18:00 day before.
 The DAM and R/T prices at the Shorham138 99 interface are used for ISO-NE.
 The DAM and R/T prices at the CSC interface are used for NYISO.

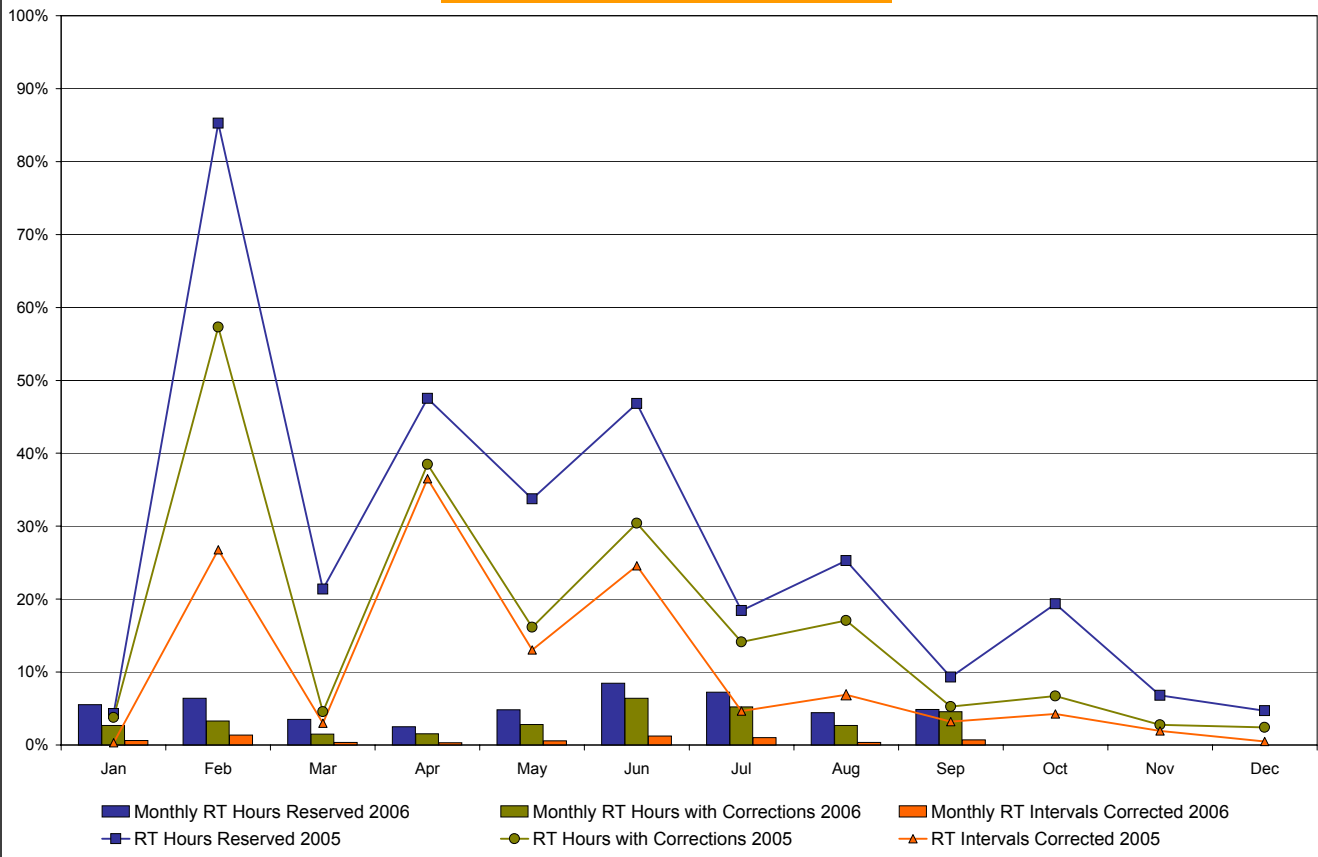
* Referred to as RTC beginning February 2005.
 Prior to February 2005 known as BME or Hour Ahead Market (HAM).

NYISO Real Time Price Correction Statistics

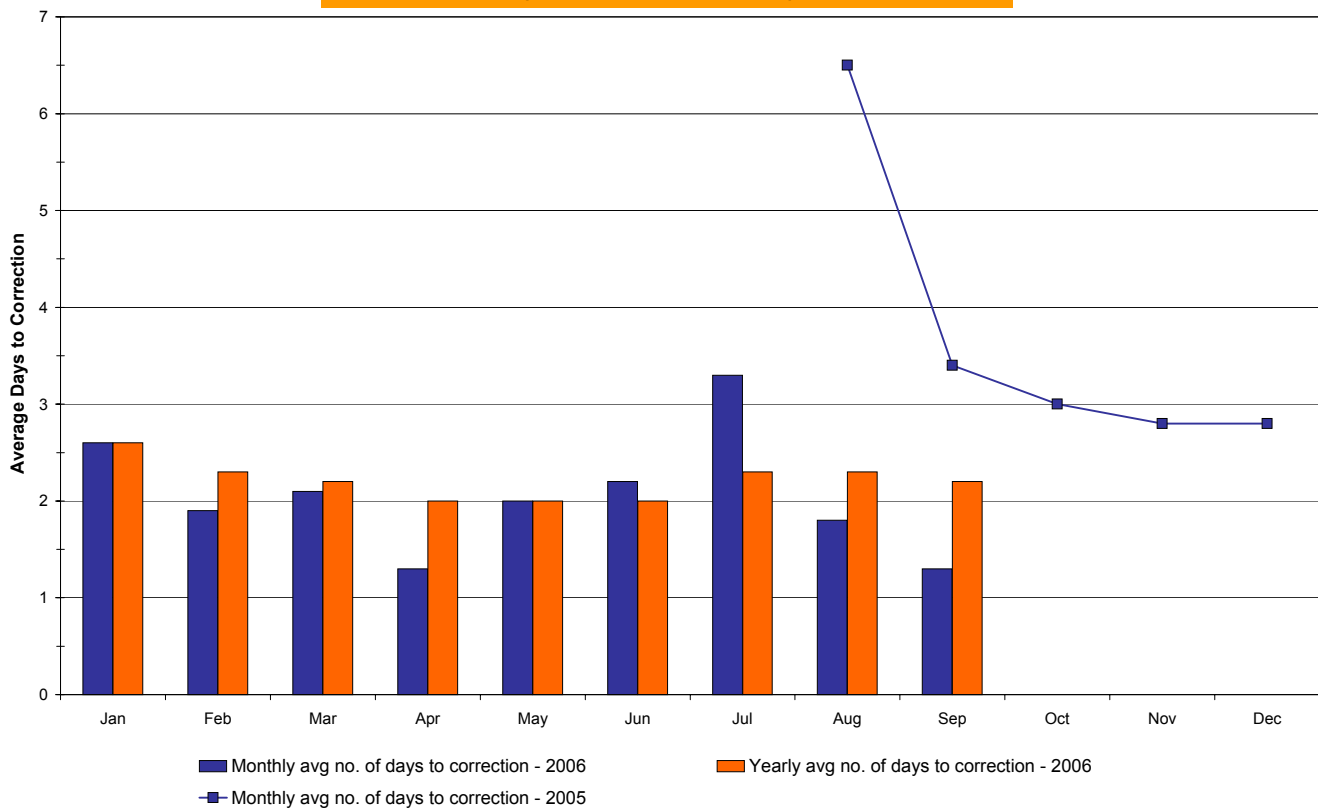
2006		<u>January</u>	<u>February</u>	<u>March</u>	<u>April</u>	<u>May</u>	<u>June</u>	<u>July</u>	<u>August</u>	<u>September</u>	<u>October</u>	<u>November</u>	<u>December</u>
Hour Corrections													
Number of hours with corrections	in the month	20	22	11	11	21	46	39	20	33			
Number of hours	in the month	744	672	744	720	744	720	744	744	720			
% of hours with corrections	in the month	2.69%	3.27%	1.48%	1.53%	2.82%	6.39%	5.24%	2.69%	4.58%			
% of hours with corrections	year-to-date	2.69%	2.97%	2.45%	2.22%	2.35%	3.02%	3.34%	3.26%	3.40%			
Interval Corrections													
Number of intervals corrected	in the month	54	112	33	27	51	107	92	31	63			
Number of intervals	in the month	9,004	8,129	9,035	8,779	9,037	8,742	9,083	9,088	8,776			
% of intervals corrected	in the month	0.60%	1.38%	0.37%	0.31%	0.56%	1.22%	1.01%	0.34%	0.72%			
% of intervals corrected	year-to-date	0.60%	0.97%	0.76%	0.65%	0.63%	0.73%	0.77%	0.72%	0.72%			
Hours Reserved													
Number of hours reserved	in the month	41	43	26	18	36	61	54	33	35			
Number of hours	in the month	744	672	744	720	744	720	744	744	720			
% of hours reserved	in the month	5.51%	6.40%	3.49%	2.50%	4.84%	8.47%	7.26%	4.44%	4.86%			
% of hours reserved	year-to-date	5.51%	5.93%	5.09%	4.44%	4.53%	5.18%	5.48%	5.35%	5.30%			
Days to Correction *													
Avg. number of days to correction	in the month	2.6	1.9	2.1	1.3	2.0	2.2	3.3	1.8	1.3			
Avg. number of days to correction	year-to-date	2.6	2.3	2.2	2.0	2.0	2.0	2.3	2.3	2.2			
Days Without Corrections													
Days without corrections	in the month	19	18	24	20	21	15	13	20	20			
Days without corrections	year-to-date	19	37	61	81	102	117	130	150	170			
2005		<u>January</u>	<u>February</u>	<u>March</u>	<u>April</u>	<u>May</u>	<u>June</u>	<u>July</u>	<u>August</u>	<u>September</u>	<u>October</u>	<u>November</u>	<u>December</u>
Hour Corrections													
Number of hours with corrections	in the month	28	385	34	277	120	219	105	127	38	50	20	18
Number of hours	in the month	744	672	744	720	744	720	744	744	720	744	720	744
% of hours with corrections	in the month	3.76%	57.29%	4.57%	38.47%	16.13%	30.42%	14.11%	17.07%	5.28%	6.72%	2.78%	2.42%
% of hours with corrections	year-to-date	3.76%	29.17%	20.69%	25.14%	23.29%	24.47%	22.96%	22.21%	20.34%	18.96%	17.50%	16.22%
Interval Corrections													
Number of intervals corrected	in the month	37	2,177	266	3,182	1,170	2,145	421	625	281	386	167	43
Number of intervals	in the month	11,811	8,131	8,961	8,711	8,972	8,729	9,024	9,065	8,741	9,029	8,721	9,115
% of intervals corrected	in the month	0.31%	26.77%	2.97%	36.53%	13.04%	24.57%	4.67%	6.89%	3.21%	4.28%	1.91%	0.47%
% of intervals corrected	year-to-date	0.31%	11.10%	8.58%	15.05%	14.67%	16.23%	14.61%	13.65%	12.54%	11.72%	10.87%	10.00%
Hours Reserved													
Number of hours reserved	in the month	32	573	159	342	251	337	137	188	67	144	49	35
Number of hours	in the month	744	672	744	720	744	720	744	744	720	744	720	744
% of hours reserved	in the month	4.30%	85.27%	21.37%	47.50%	33.74%	46.81%	18.41%	25.27%	9.31%	19.35%	6.81%	4.70%
% of hours reserved	year-to-date	4.30%	42.73%	35.37%	38.40%	37.44%	39.00%	35.99%	34.62%	31.84%	30.56%	28.43%	26.42%
Days to Correction *													
Avg. number of days to correction	in the month	-	-	-	-	-	-	-	6.5	3.4	3.0	2.8	2.8
Avg. number of days to correction	year-to-date	-	-	-	-	-	-	-	-	-	-	-	-
Days Without Corrections													
Days without corrections	in the month	12	4	16	3	4	4	6	6	17	17	22	19
Days without corrections	year-to-date	12	16	32	35	39	43	49	55	72	89	111	130

* Calendar days from reservation date. Data available from August 2005.

Percentage of Real-Time Corrections

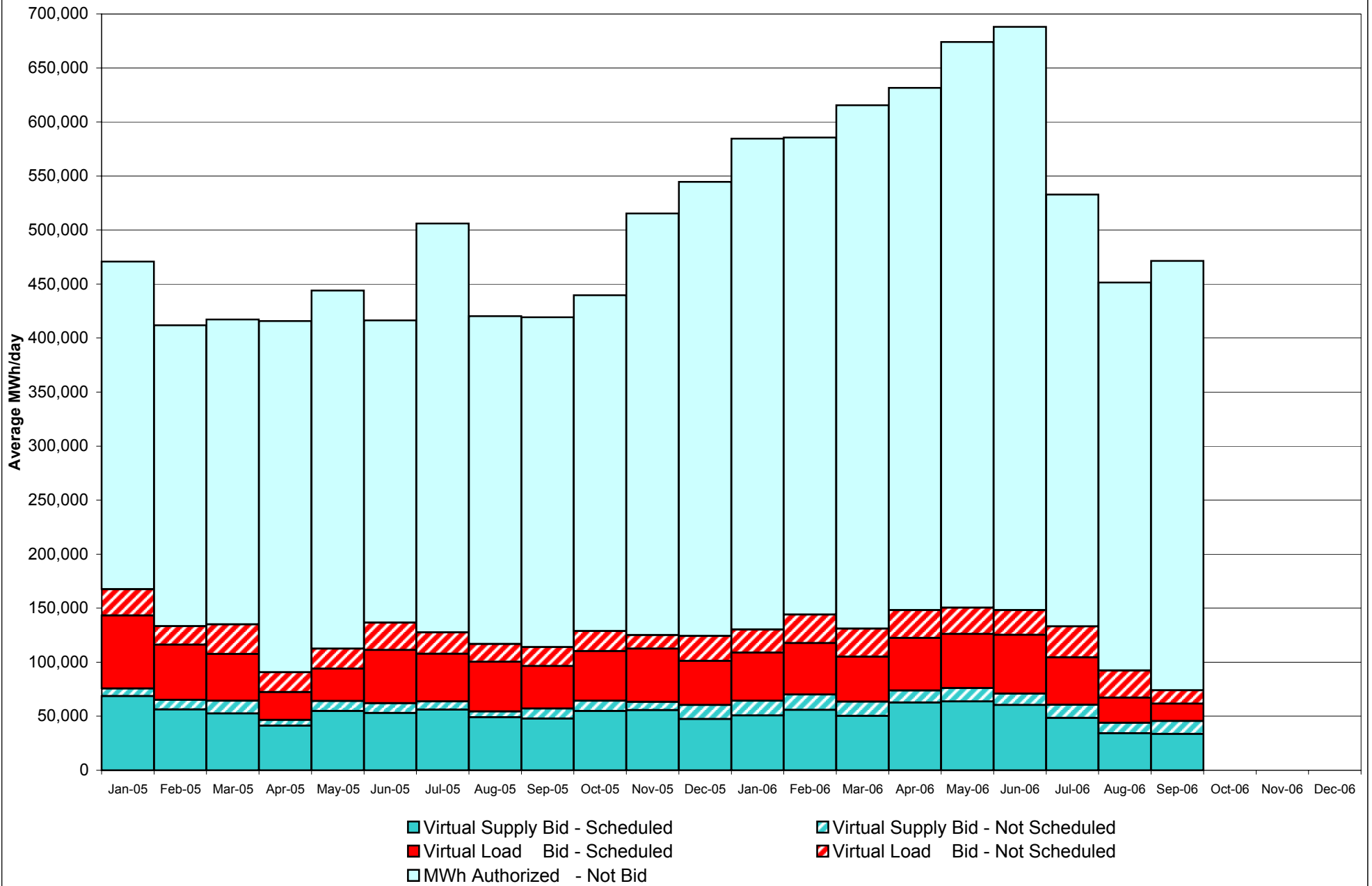


Annual average time period for making Price Corrections (from reservation date) *

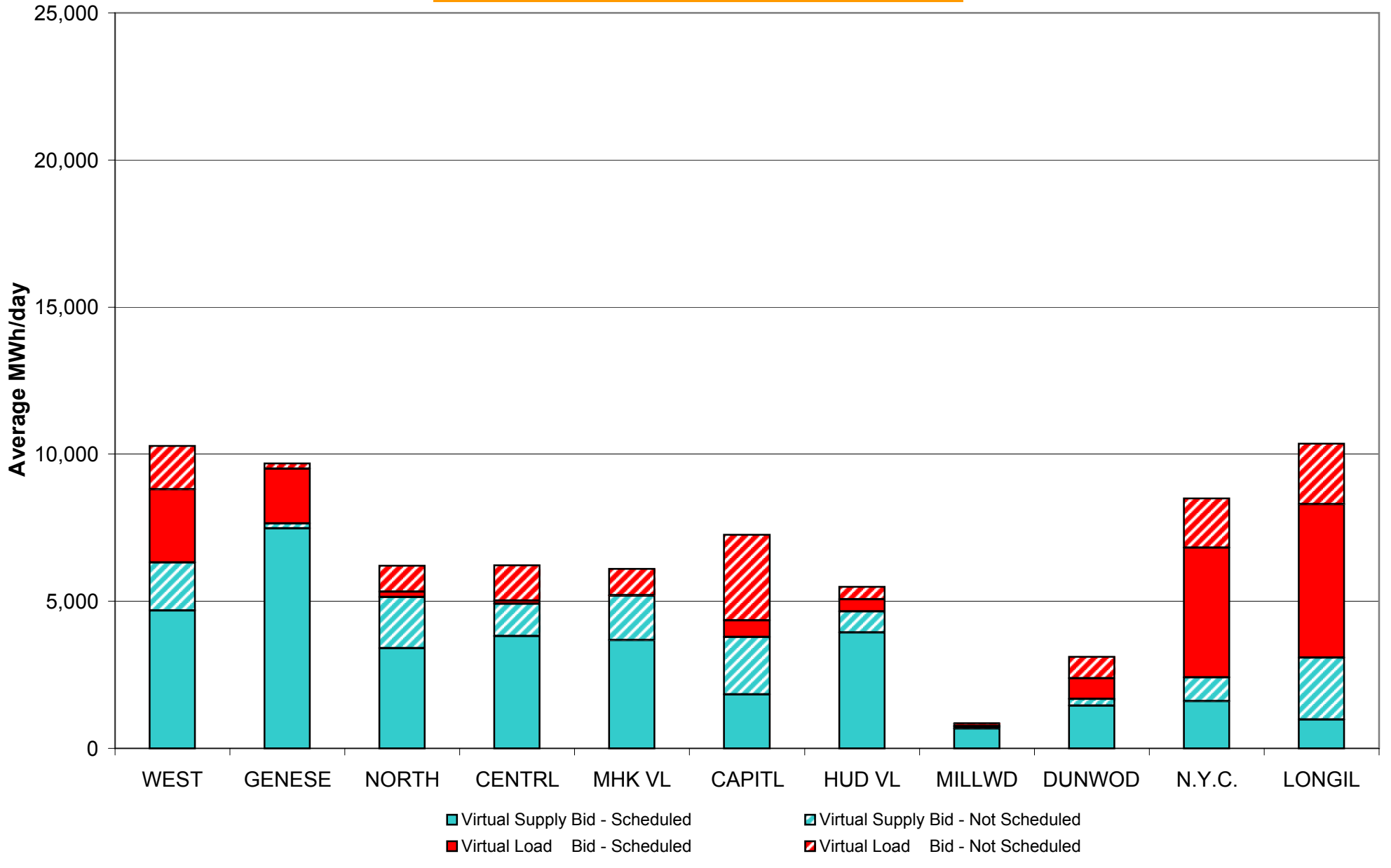


* Calendar days from reservation date. Data available from August 2005.

**NYISO Virtual Trading
Average MWh per day**



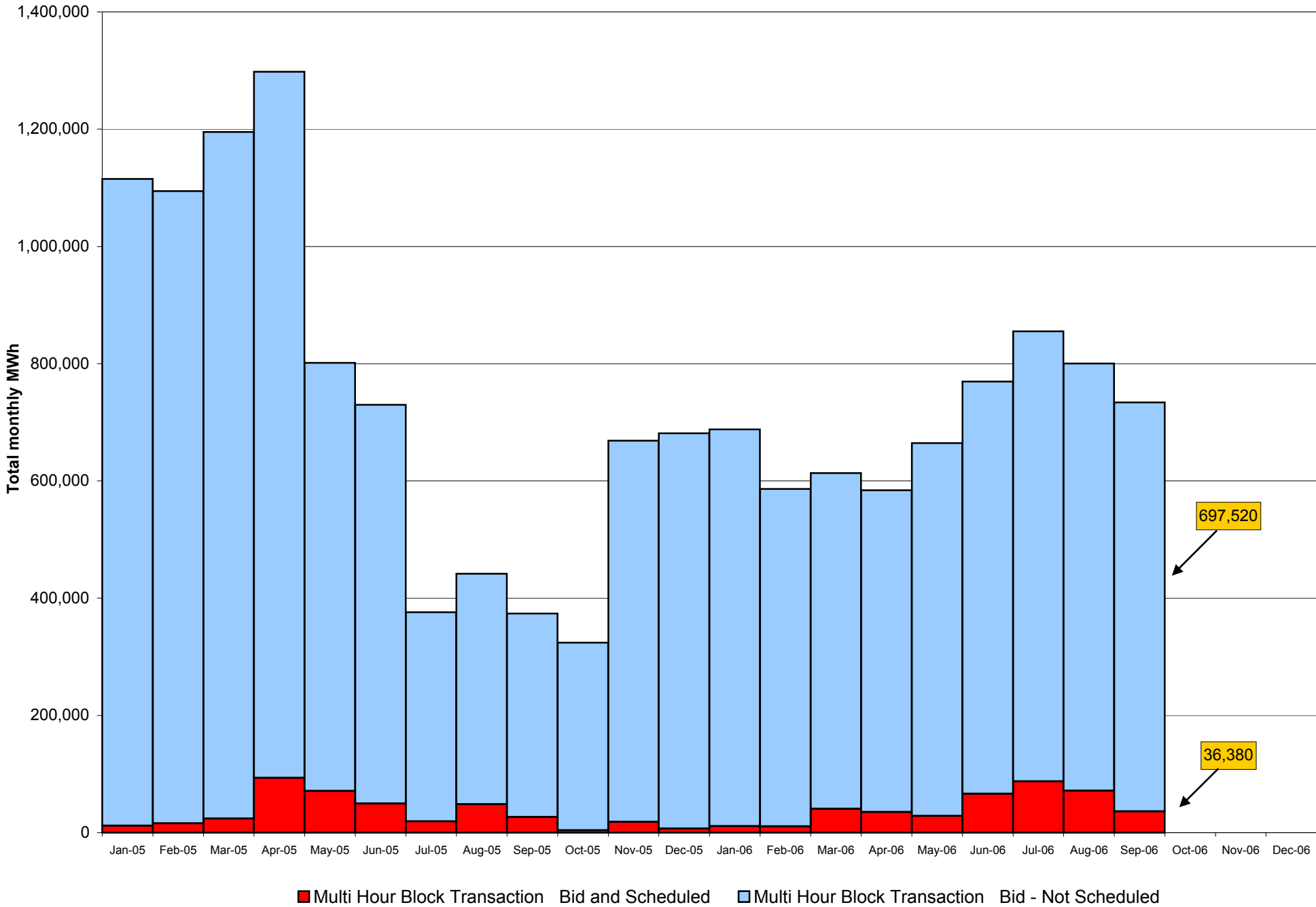
Virtual Load and Supply Zonal Statistics September 2006



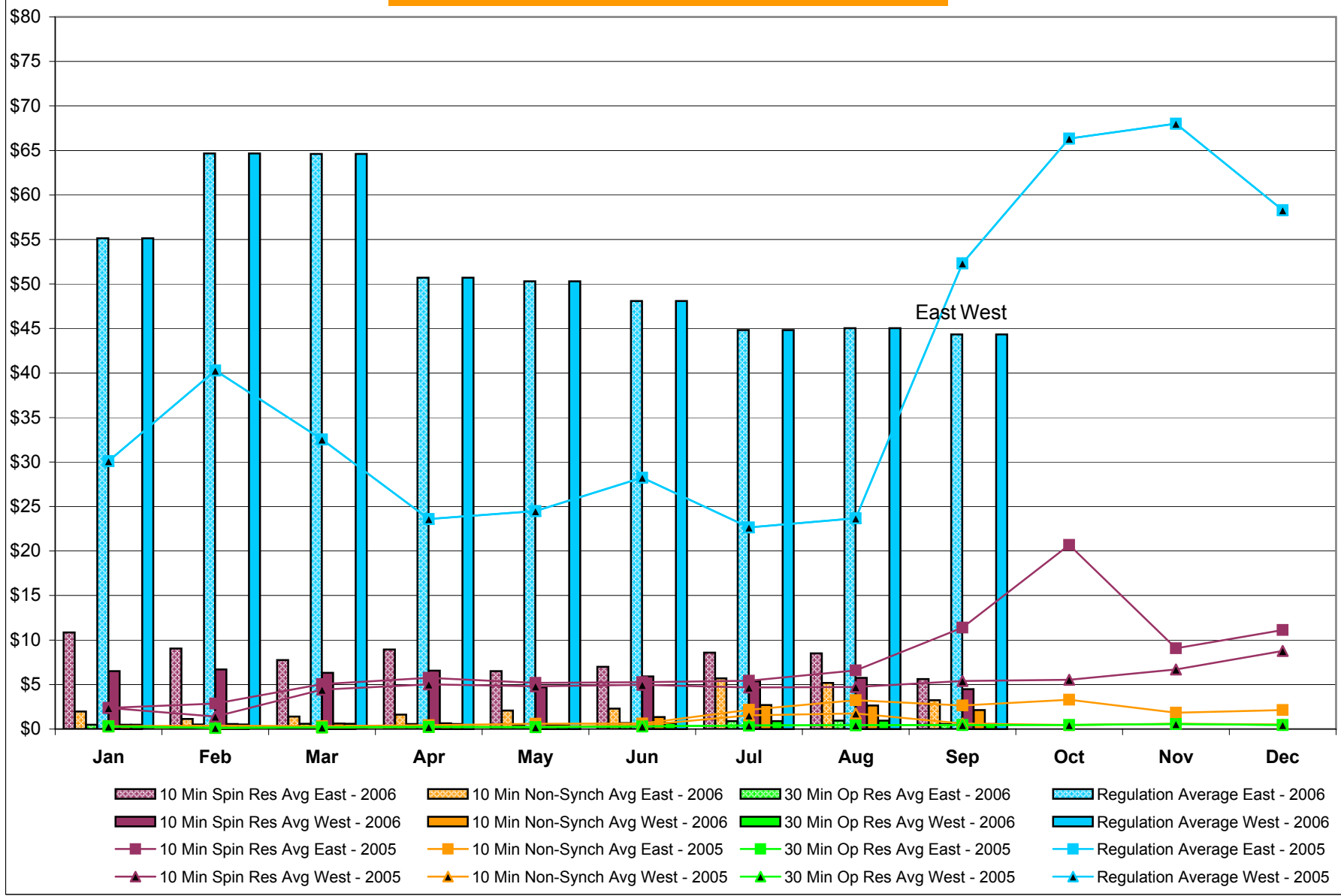
Virtual Load and Supply Zonal Statistics (Average MWh/day) - 2006

		Virtual Load Bid		Virtual Supply Bid				Virtual Load Bid		Virtual Supply Bid				Virtual Load Bid		Virtual Supply Bid				
Zone	Date	Scheduled	Not Scheduled	Scheduled	Not Scheduled	Zone	Date	Scheduled	Not Scheduled	Scheduled	Not Scheduled	Zone	Date	Scheduled	Not Scheduled	Scheduled	Not Scheduled			
WEST	Jan-06	5,890	2,304	11,610	3,141	MHK VL	Jan-06	46	902	5,884	1,636	DUNWOD	Jan-06	745	644	3,267	26			
	Feb-06	5,103	3,356	10,907	3,042		Feb-06	17	930	6,935	891		Feb-06	1,714	399	2,441	42			
	Mar-06	3,237	1,807	13,710	2,979		Mar-06	42	932	4,940	937		Mar-06	1,097	47	2,163	27			
	Apr-06	3,206	1,676	16,016	2,317		Apr-06	3	841	8,714	579		Apr-06	1,144	722	3,403	60			
	May-06	3,602	1,641	13,210	1,806		May-06	40	1,021	8,610	759		May-06	1,056	546	3,949	670			
	Jun-06	2,538	2,185	11,018	1,685		Jun-06	407	892	7,818	989		Jun-06	3,095	748	2,761	45			
	Jul-06	1,496	1,960	8,348	1,405		Jul-06	226	932	6,813	1,039		Jul-06	2,819	1,314	1,137	538			
	Aug-06	2,097	820	6,754	935		Aug-06	35	892	4,793	802		Aug-06	1,118	333	742	223			
	Sep-06	2,478	1,491	4,679	1,637		Sep-06	25	891	3,675	1,507		Sep-06	705	730	1,453	218			
	Oct-06						Oct-06						Oct-06							
	Nov-06						Nov-06						Nov-06							
	Dec-06						Dec-06						Dec-06							
GENESE	Jan-06	1,831	708	6,806	73	CAPITL	Jan-06	3,624	1,646	1,192	48	N.Y.C.	Jan-06	19,500	4,668	1,330	3,334			
	Feb-06	2,434	208	6,652	55		Feb-06	5,155	2,682	1,584	65		Feb-06	16,986	7,228	2,463	2,793			
	Mar-06	1,856	838	6,734	53		Mar-06	2,850	3,171	643	59		Mar-06	12,401	7,131	4,092	2,202			
	Apr-06	3,478	92	6,693	205		Apr-06	2,915	3,767	1,584	847		Apr-06	19,173	6,820	1,189	1,699			
	May-06	4,049	18	8,510	24		May-06	3,690	3,159	877	2,082		May-06	19,528	6,539	402	1,064			
	Jun-06	3,158	44	6,400	118		Jun-06	2,750	2,967	2,076	1,950		Jun-06	20,192	5,844	437	598			
	Jul-06	2,441	155	5,610	163		Jul-06	1,883	3,011	2,044	1,583		Jul-06	20,370	9,037	729	1,946			
	Aug-06	2,371	75	5,058	69		Aug-06	1,076	2,869	2,078	1,432		Aug-06	9,289	9,252	972	1,463			
	Sep-06	1,865	189	7,470	167		Sep-06	563	2,914	1,832	1,955		Sep-06	4,400	1,687	1,599	818			
	Oct-06						Oct-06						Oct-06							
	Nov-06						Nov-06						Nov-06							
	Dec-06						Dec-06						Dec-06							
NORTH	Jan-06	262	22	5,961	1,658	HUD VL	Jan-06	2,086	2,026	8,595	1,717	LONGIL	Jan-06	8,207	6,064	1,091	1,891			
	Feb-06	139	101	6,749	2,570		Feb-06	3,722	1,834	8,989	1,964		Feb-06	9,345	8,197	1,088	2,511			
	Mar-06	264	21	7,069	2,838		Mar-06	8,898	1,851	5,128	1,716		Mar-06	8,449	10,059	991	2,357			
	Apr-06	96	695	8,243	1,926		Apr-06	9,888	1,640	10,242	1,034		Apr-06	7,291	8,424	930	1,750			
	May-06	9	921	7,895	1,596		May-06	8,934	1,330	12,005	1,311		May-06	8,188	7,792	1,125	1,939			
	Jun-06	204	910	9,925	1,660		Jun-06	7,728	964	10,828	872		Jun-06	11,324	7,000	1,573	1,663			
	Jul-06	14	896	8,332	1,340		Jul-06	1,881	1,058	8,272	1,389		Jul-06	8,917	8,823	1,657	1,693			
	Aug-06	8	888	5,238	1,971		Aug-06	632	871	4,617	572		Aug-06	6,003	7,838	887	1,407			
	Sep-06	169	889	3,403	1,744		Sep-06	420	430	3,938	709		Sep-06	5,219	2,062	972	2,107			
	Oct-06						Oct-06						Oct-06							
	Nov-06						Nov-06						Nov-06							
	Dec-06						Dec-06						Dec-06							
CENTRL	Jan-06	713	28	3,870	103	MILLWD	Jan-06	1,531	2,596	1,065	11	NYISO	Jan-06	44,436	21,609	50,671	13,639			
	Feb-06	395	27	7,081	165		Feb-06	2,540	1,560	1,067	24		Feb-06	47,550	26,523	55,956	14,122			
	Mar-06	581	28	4,683	31		Mar-06	1,799	135	189	7		Mar-06	41,475	26,020	50,342	13,205			
	Apr-06	673	882	4,838	522		Apr-06	943	97	904	28		Apr-06	48,811	25,655	62,755	10,967			
	May-06	674	1,101	4,694	945		May-06	453	210	2,346	169		May-06	50,222	24,279	63,624	12,364			
	Jun-06	578	1,098	6,115	900		Jun-06	2,543	95	1,352	118		Jun-06	54,518	22,746	60,303	10,597			
	Jul-06	1,032	1,377	4,672	687		Jul-06	2,935	61	804	335		Jul-06	44,013	28,624	48,419	12,117			
	Aug-06	189	1,083	2,770	638		Aug-06	607	91	393	22		Aug-06	23,425	25,012	34,301	9,533			
	Sep-06	94	1,206	3,815	1,103		Sep-06	102	3	677	67		Sep-06	16,039	12,492	33,512	12,032			
	Oct-06						Oct-06						Oct-06							
	Nov-06						Nov-06						Nov-06							
	Dec-06						Dec-06						Dec-06							

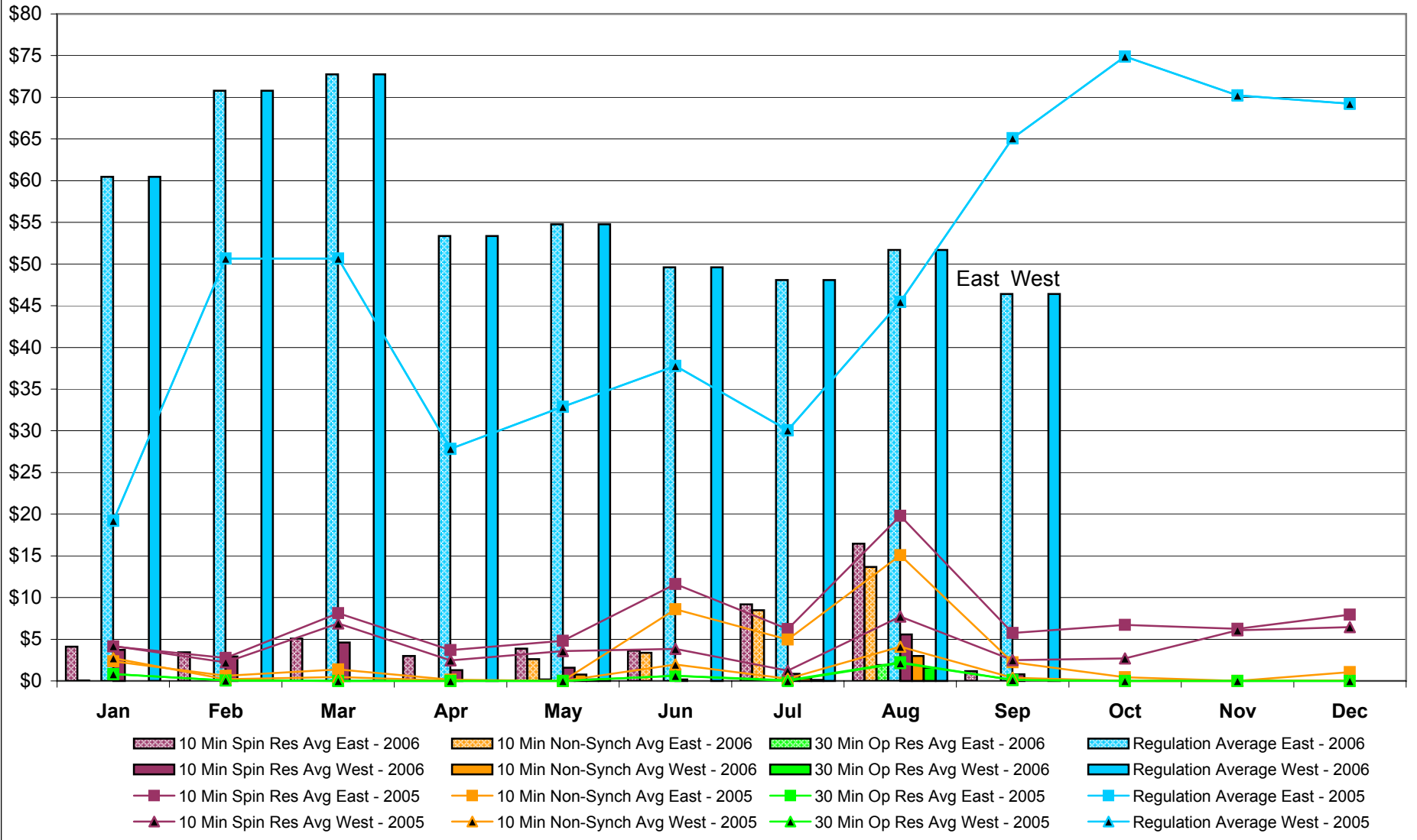
NYISO Multi Hour Block Transactions Monthly Total MWh



NYISO Monthly Average Ancillary Service Prices Day Ahead Market 2005 - 2006

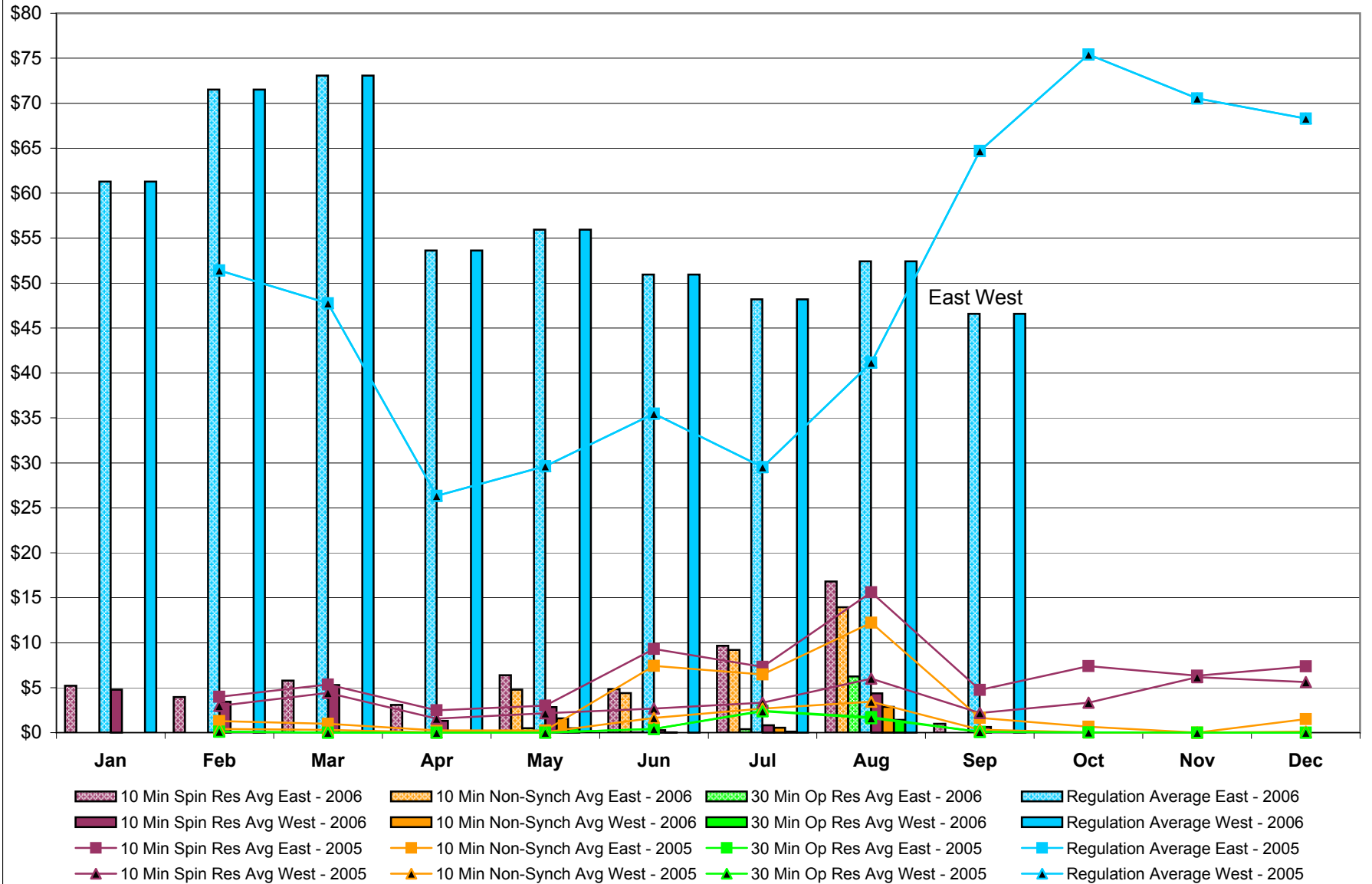


NYISO Monthly Average Ancillary Service Prices RTC* Market 2005 - 2006



* Referred to as RTC beginning February 2005
Prior to February 2005 known as BME or Hour Ahead Market (HAM)

NYISO Monthly Average Ancillary Service Prices Real Time Market* 2005 - 2006



* The Real Time Ancillary Market began in February 2005

NYISO Markets Ancillary Services Statistics - Unweighted Price (\$/MWH)

2006	<u>January</u>	<u>February</u>	<u>March</u>	<u>April</u>	<u>May</u>	<u>June</u>	<u>July</u>	<u>August</u>	<u>September</u>	<u>October</u>	<u>November</u>	<u>December</u>
Day Ahead Market												
10 Min Spin East	10.86	9.06	7.76	8.94	6.52	6.98	8.60	8.50	5.62			
10 Min Spin West	6.50	6.70	6.32	6.56	4.71	5.92	5.37	5.76	4.49			
10 Min Non Synch East	1.97	1.15	1.39	1.63	2.07	2.31	5.71	5.19	3.25			
10 Min Non Synch West	0.50	0.56	0.62	0.66	0.40	1.34	2.69	2.64	2.13			
30 Min East	0.48	0.52	0.59	0.58	0.38	0.66	0.89	0.95	0.56			
30 Min West	0.48	0.52	0.59	0.58	0.38	0.66	0.89	0.95	0.56			
Regulation East	55.13	64.65	64.62	50.71	50.30	48.10	44.83	45.04	44.34			
Regulation West	55.13	64.65	64.62	50.71	50.30	48.10	44.83	45.04	44.34			
RTC* Market												
10 Min Spin East	4.10	3.44	5.07	3.00	3.86	3.65	9.19	16.44	1.17			
10 Min Spin West	3.71	2.93	4.59	1.28	1.60	0.18	0.85	5.56	0.79			
10 Min Non Synch East	0.02	0.01	0.00	0.01	2.60	3.36	8.48	13.68	0.00			
10 Min Non Synch West	0.00	0.00	0.00	0.00	0.77	0.00	0.32	3.01	0.00			
30 Min East	0.00	0.00	0.00	0.00	0.19	0.00	0.11	1.90	0.00			
30 Min West	0.00	0.00	0.00	0.00	0.19	0.00	0.11	1.57	0.00			
Regulation East	60.46	70.79	72.76	53.37	54.76	49.60	48.08	51.68	46.42			
Regulation West	60.46	70.79	72.76	53.37	54.76	49.60	48.08	51.68	46.42			
Real Time Market**												
10 Min Spin East	5.20	3.96	5.78	3.07	6.38	4.84	9.66	16.81	0.98			
10 Min Spin West	4.78	3.43	5.30	1.32	2.82	0.28	0.81	4.37	0.63			
10 Min Non Synch East	0.01	0.00	0.00	0.01	4.79	4.40	9.20	13.94	0.00			
10 Min Non Synch West	0.00	0.00	0.00	0.00	1.58	0.02	0.54	2.86	0.00			
30 Min East	0.00	0.00	0.00	0.00	0.49	0.02	0.37	6.24	0.00			
30 Min West	0.00	0.00	0.00	0.00	0.49	0.01	0.12	1.41	0.00			
Regulation East	61.28	71.52	73.06	53.62	55.93	50.95	48.17	52.42	46.56			
Regulation West	61.28	71.52	73.06	53.62	55.93	50.95	48.17	52.42	46.56			
2005	<u>January</u>	<u>February</u>	<u>March</u>	<u>April</u>	<u>May</u>	<u>June</u>	<u>July</u>	<u>August</u>	<u>September</u>	<u>October</u>	<u>November</u>	<u>December</u>
Day Ahead Market												
10 Min Spin East	2.38	2.87	5.06	5.76	5.19	5.26	5.44	6.59	11.38	20.70	9.08	11.12
10 Min Spin West	2.37	1.39	4.43	5.03	4.80	4.96	4.68	4.73	5.41	5.54	6.68	8.77
10 Min Non Synch East	0.31	0.37	0.31	0.44	0.60	0.61	2.16	3.25	2.65	3.31	1.82	2.14
10 Min Non Synch West	0.31	0.13	0.20	0.24	0.23	0.43	1.54	1.75	0.63	0.47	0.59	0.52
30 Min East	0.31	0.13	0.19	0.24	0.22	0.29	0.41	0.44	0.47	0.46	0.57	0.47
30 Min West	0.31	0.13	0.19	0.24	0.22	0.29	0.41	0.44	0.47	0.46	0.57	0.47
Regulation East	30.10	40.28	32.53	23.61	24.49	28.23	22.66	23.67	52.33	66.33	68.02	58.28
Regulation West	30.10	40.28	32.53	23.61	24.49	28.23	22.66	23.67	52.33	66.33	68.02	58.28
RTC* Market												
10 Min Spin East	4.15	2.75	8.13	3.71	4.80	11.61	6.23	19.80	5.75	6.72	6.25	7.94
10 Min Spin West	4.20	2.23	6.90	2.46	3.58	3.84	1.24	7.72	2.50	2.69	6.06	6.45
10 Min Non Synch East	2.35	0.62	1.38	0.14	0.00	8.58	4.96	15.08	2.22	0.44	0.01	1.07
10 Min Non Synch West	2.72	0.21	0.47	0.03	0.00	1.96	0.25	4.09	0.37	0.00	0.00	0.06
30 Min East	0.83	0.05	0.00	0.00	0.00	0.62	0.08	2.22	0.12	0.00	0.00	0.00
30 Min West	0.83	0.05	0.00	0.00	0.00	0.61	0.00	2.15	0.12	0.00	0.00	0.00
Regulation East	19.23	50.66	50.65	27.85	32.87	37.80	30.07	45.47	65.10	74.90	70.23	69.23
Regulation West	19.23	50.66	50.65	27.85	32.87	37.80	30.07	45.47	65.10	74.90	70.23	69.23
Real Time Market**												
10 Min Spin East	-	3.99	5.34	2.47	3.00	9.30	7.30	15.60	4.75	7.40	6.32	7.36
10 Min Spin West	-	2.97	4.42	1.56	2.16	2.69	3.33	5.99	2.19	3.34	6.16	5.62
10 Min Non Synch East	-	1.27	0.98	0.25	0.24	7.43	6.46	12.22	1.63	0.65	0.00	1.49
10 Min Non Synch West	-	0.41	0.29	0.02	0.07	1.63	2.68	3.44	0.33	0.01	0.00	0.12
30 Min East	-	0.12	0.00	0.00	0.00	0.40	2.43	1.71	0.09	0.01	0.00	0.00
30 Min West	-	0.11	0.00	0.00	0.00	0.40	2.36	1.61	0.09	0.01	0.00	0.00
Regulation East	-	51.41	47.74	26.33	29.62	35.47	29.52	41.14	64.70	75.41	70.52	68.30
Regulation West	-	51.41	47.74	26.33	29.62	35.47	29.52	41.13	64.70	75.41	70.52	68.30

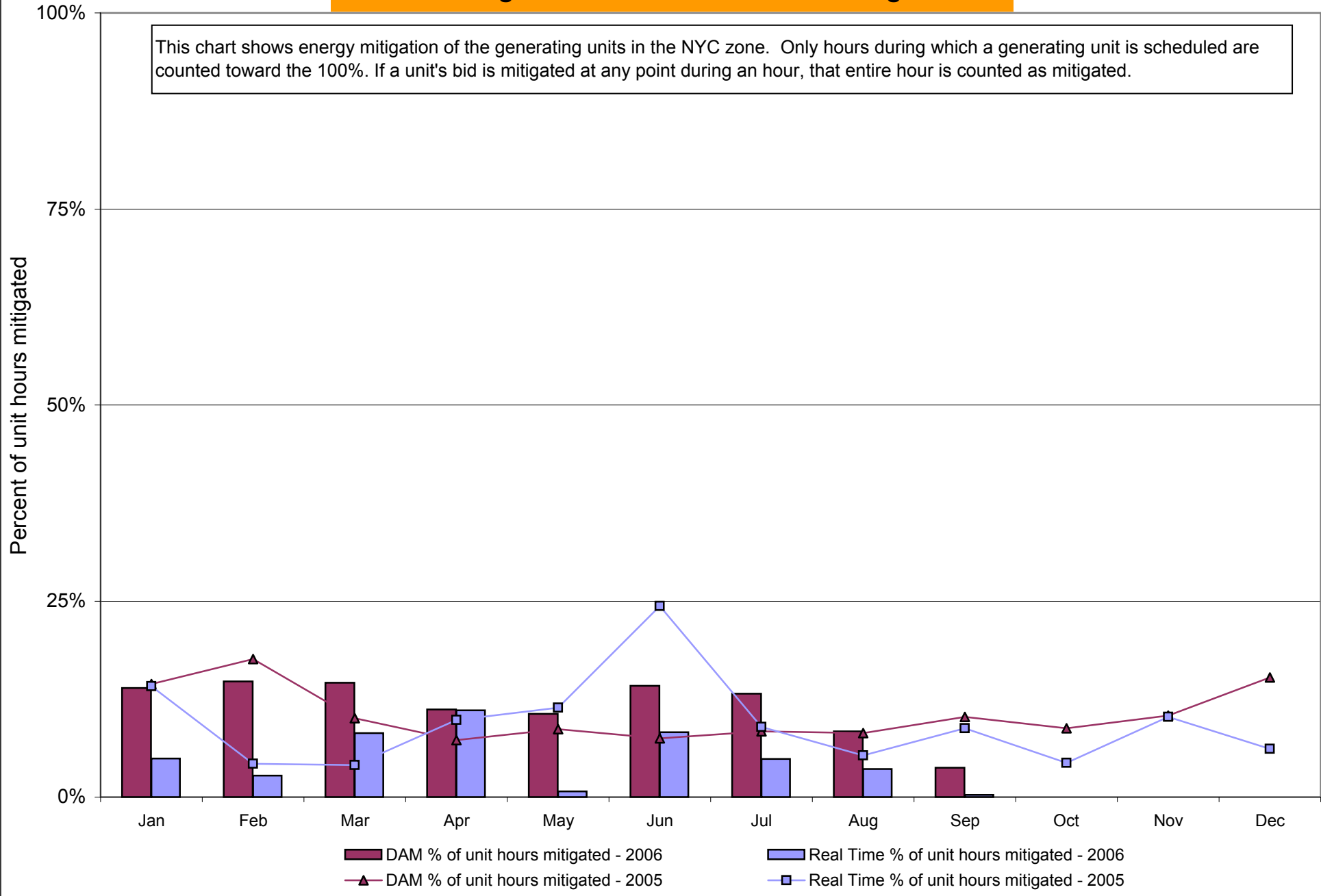
* Referred to as RTC beginning February 2005. Prior to February 2005 known as BME or Hour Ahead Market (HAM).

** The Real Time Ancillary Market began in February 2005.

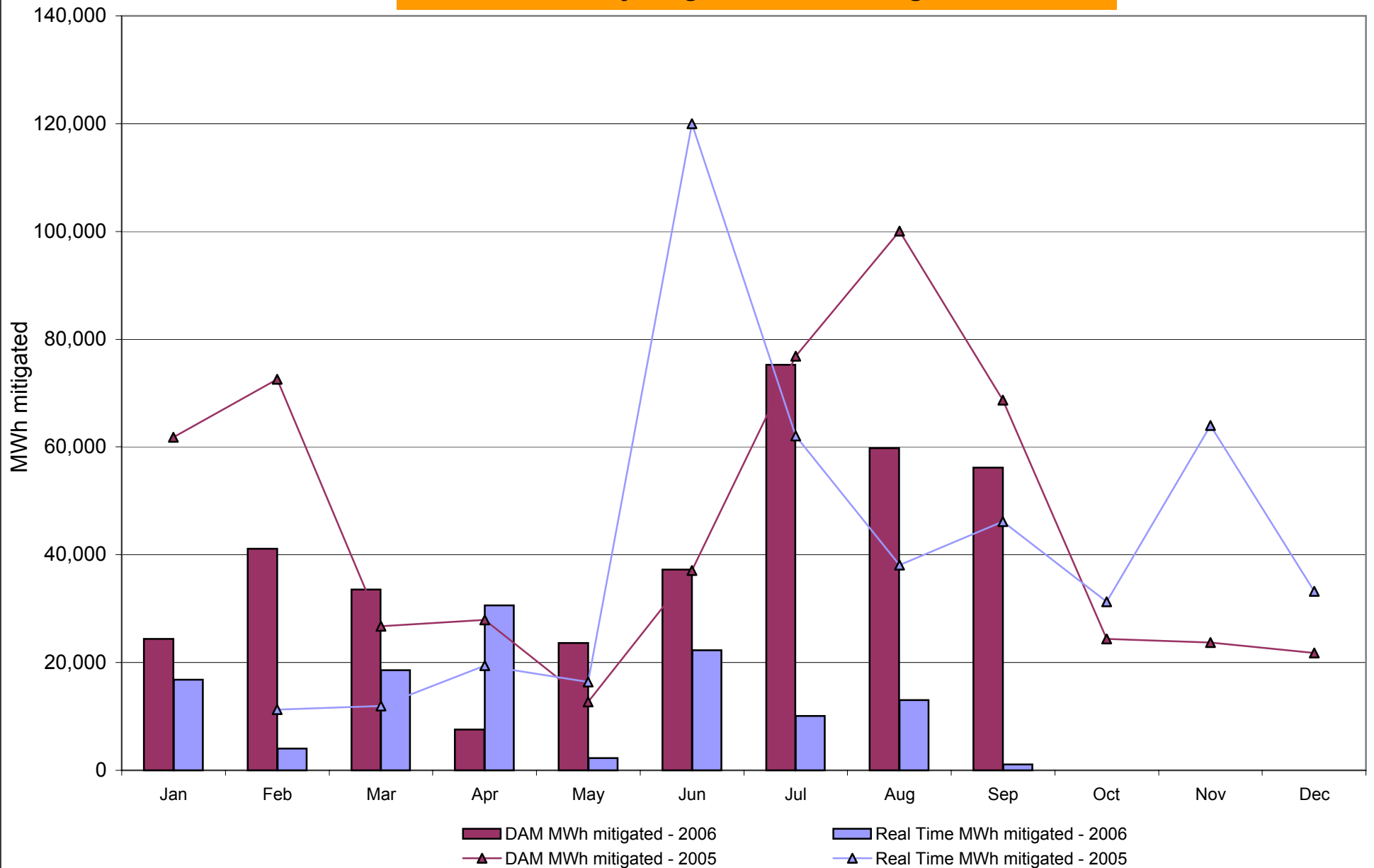
NYISO In City Energy Mitigation (NYC Zone) 2005-2006

Percentage of committed unit-hours mitigated

This chart shows energy mitigation of the generating units in the NYC zone. Only hours during which a generating unit is scheduled are counted toward the 100%. If a unit's bid is mitigated at any point during an hour, that entire hour is counted as mitigated.

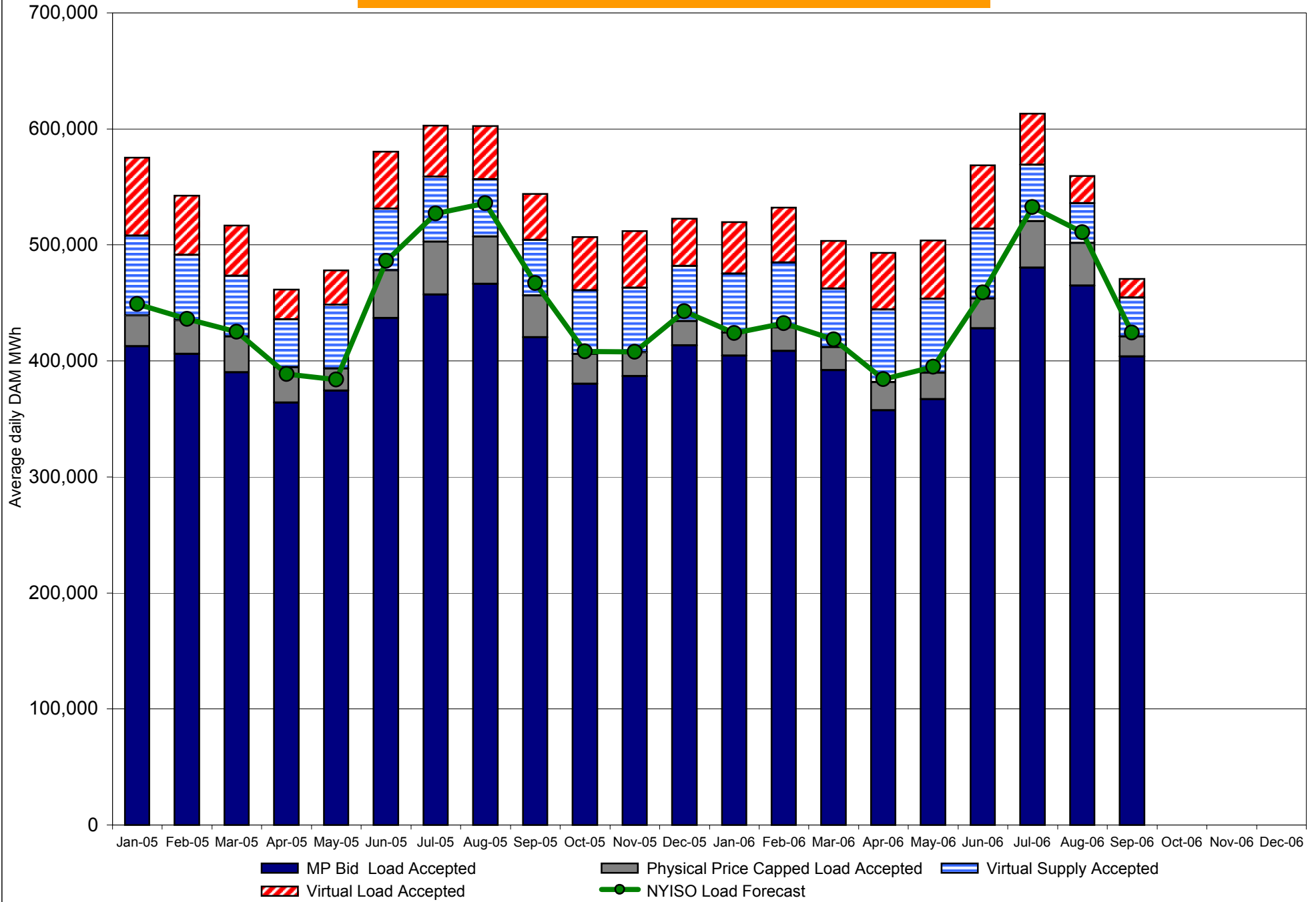


NYISO In City Energy Mitigation (NYC Zone) 2005-2006 Monthly megawatt hours mitigated

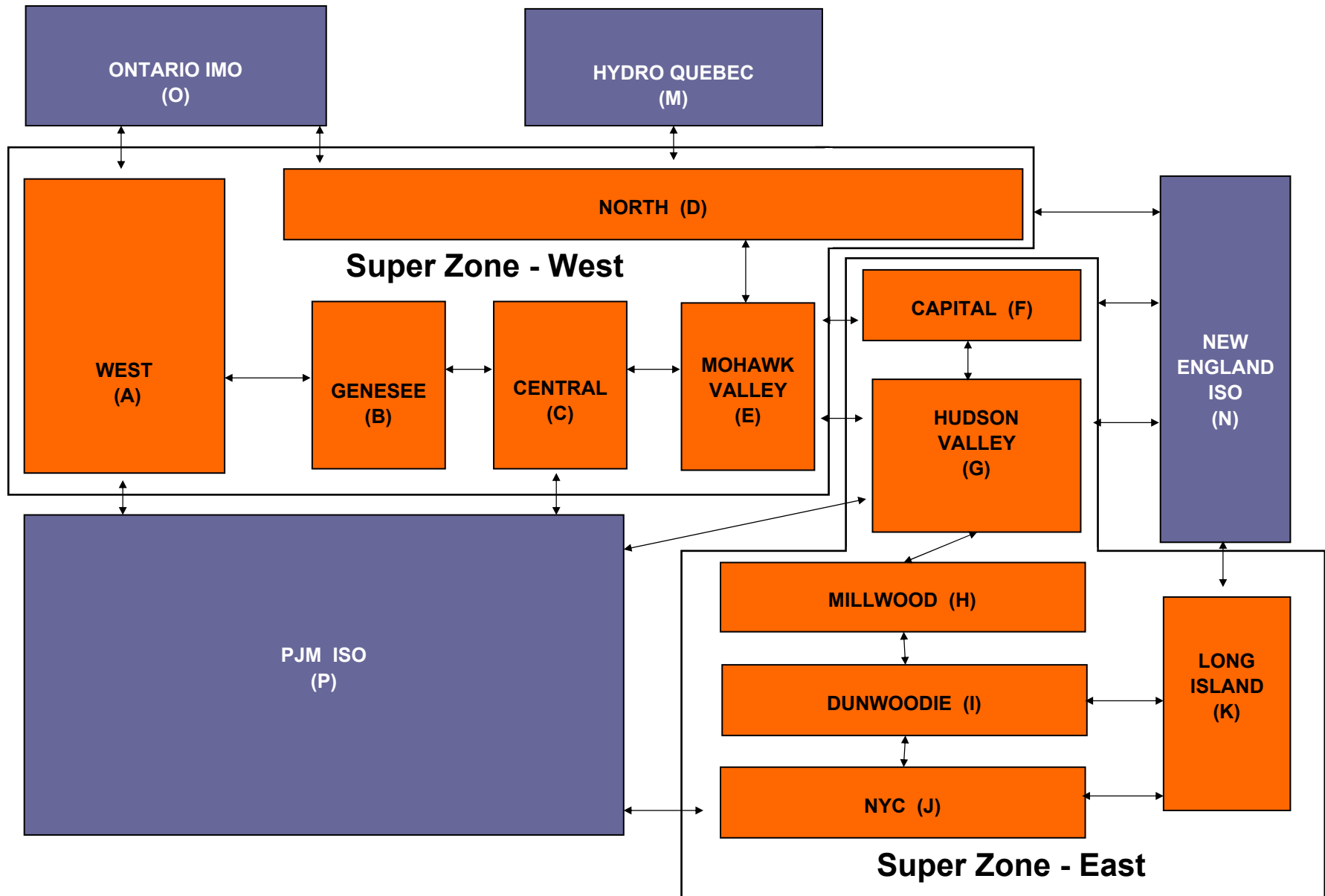


RT mitigation data available with SMD2 deployment in February 2005.

NYISO Average Daily DAM Load Bid Summary



NYISO LBMP ZONES



Billing Codes for Chart 4-C

Chart 4-C Category Name	Billing Code	Billing Category Name
Bid Production Cost Guarantee Balancing	81203	Balancing NYISO Bid Production Cost Guarantee - Internal Units
Bid Production Cost Guarantee Balancing	81204	Balancing NYISO Bid Production Cost Guarantee - External Units
Bid Production Cost Guarantee Balancing	81205	Balancing NYISO Bid Production Cost Guarantee Expenditure due to Curtailed Imports
Bid Production Cost Guarantee Balancing	81208	Balancing NYISO Bid Production Cost Guarantee - Internal Units
Bid Production Cost Guarantee Balancing	81209	Balancing NYISO Bid Production Cost Guarantee - External Units
Bid Production Cost Guarantee Balancing	81213	Balancing NYISO Bid Production Cost Guarantee Expenditure due to Curtailed Imports
Bid Production Cost Guarantee DAM	81201	DAM NYISO Bid Production Cost Guarantee - Internal Units
Bid Production Cost Guarantee DAM	81202	DAM NYISO Bid Production Cost Guarantee - External Units
Bid Production Cost Guarantee DAM	81206	DAM NYISO Bid Production Cost Guarantee - Internal Units
Bid Production Cost Guarantee DAM	81207	DAM NYISO Bid Production Cost Guarantee - External Units
Bid Production Cost Guarantee DAM Virtual	81501	DAM Virtual Bid Production Cost Guarantee
DAM Contract Balancing	81315	DAM Contract Balancing
DAM Contract Balancing	81317	DAM Contract Balancing
Local Reliability Balancing	81002	Balancing Local Reliability Bid Production Cost Guarantee
Local Reliability DAM	81001	DAM Local Reliability Bid Production Cost Guarantee
NYISO Cost of Operations	80901	NYISO Cost Of Operations
NYISO Cost of Operations	80902	NYISO Cost Of Operations
NYISO Cost of Operations	83501	NYISO Cost Of Operations
NYISO Cost of Operations	83502	NYISO Cost Of Operations
Residuals Balancing	81302	Balancing Market Energy Residual
Residuals Balancing	81304	Balancing Market Loss Residual
Residuals Balancing	81305	Balancing Market Congestion Balancing
Residuals Balancing	81306	Emergency Energy Purchases
Residuals Balancing	81307	Emergency Energy Sales
Residuals Balancing	81309	Balancing Market Energy Residual
Residuals Balancing	81311	Balancing Market Loss Residual
Residuals Balancing	81312	Balancing Market Congestion Balancing
Residuals Balancing	81313	Emergency Energy Purchases
Residuals Balancing	81314	Emergency Energy Sales
Residuals DAM	81301	Day Ahead Market Energy Residual
Residuals DAM	81303	Day Ahead Market Loss Residual
Residuals DAM	81308	Day Ahead Market Energy Residual
Residuals DAM	81310	Day Ahead Market Loss Residual