

Congestion Impact Update

NYISO ESPWG
October 4, 2005

Manos Obessis
Jim Mitsche



Since the Last Report

- Calculated 2005 Q2 Impact Metrics
 - Addressed issues with transition to SMD data formats
 - Refined PROBE functionality
- 2005 Q1 results posted on NYISO website
- Metrics based on mitigated bids
- Work with NYISO to improve process for data acquisition



Congestion Reporting Posting (just for reference)

Total and Zonal Congestion Metrics

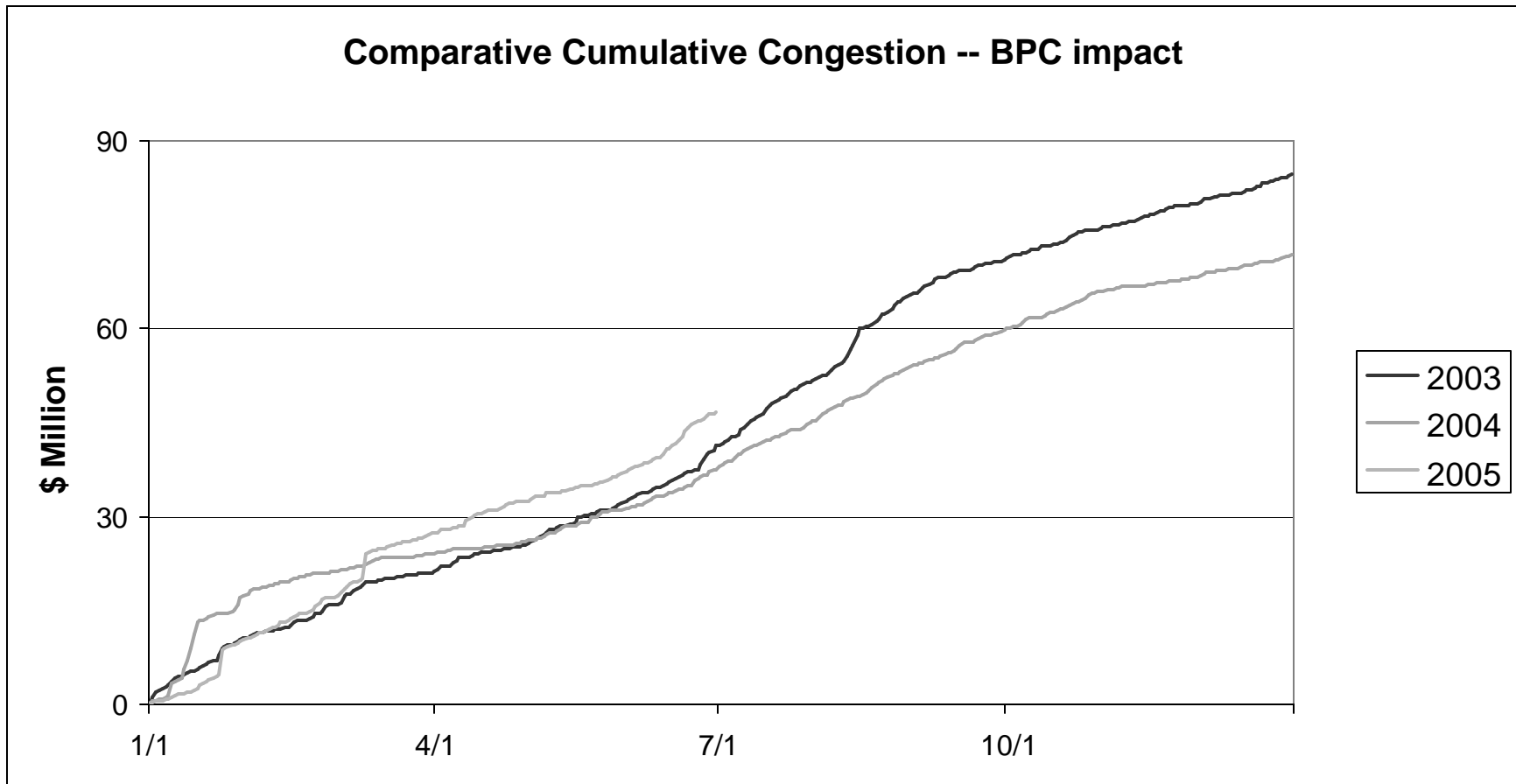
		Annual Total	Monthly Total	Daily Totals
1	4 metrics for NYCA	X	X	X
2	4 metrics Zonal	X	X	X
3	Constrained component quantities	X		
4	Unconstrained component quantities	X		

Congestion Payments By Constraint

		Annual Total	Monthly Total	Daily Totals
A	Monitored element totals	X	X	
B	Monitored element / Contingency pair			X



Multi-year comparison



Multi-year comparison by numbers (BPC impact – in \$ Million)

	2003	2004	2005
April	4.3	2.0	5.3
May	6.7	5.2	4.2
June	9.1	6.3	9.9
Q2	20.1	13.5	19.4



2005 Q2 Metric summary

Q2 2005 Total Congestion Impact - Mitigated Bids (\$ Millions)

Zone	BPC mitig	Unhedged Cong	Gener pay	Unhedged load pay
CAPITL	-4.68	1.16	-10.64	-9.11
CENTRL	-22.06	-0.33	-48.29	-12.03
DUNWOD	0.00	5.97	-0.32	-0.27
GENESE	-0.61	-0.47	-5.76	-9.56
HQ	-11.03	-0.39	-14.86	0.12
HUDVL	5.27	-4.58	2.98	-14.49
LONGIL	56.25	59.76	87.27	36.22
MHKVL	-3.33	0.12	-7.69	-5.79
MILLWD	0.00	-7.04	-8.15	-11.27
NORTH	-0.47	0.00	-10.15	-4.94
NPX	-4.33	0.02	-6.01	-0.57
NYC	32.65	70.33	55.07	14.99
OH	-5.22	-0.02	-9.58	0.33
PJM	-18.54	-0.09	-24.76	1.91
WEST	-4.46	-1.28	-28.88	-15.01
Totals	19.45	123.15	-29.75	-29.47
Sched1 & Shortfall Adj				0.28
NYCA Total	19.45	123.15	-29.75	-29.75



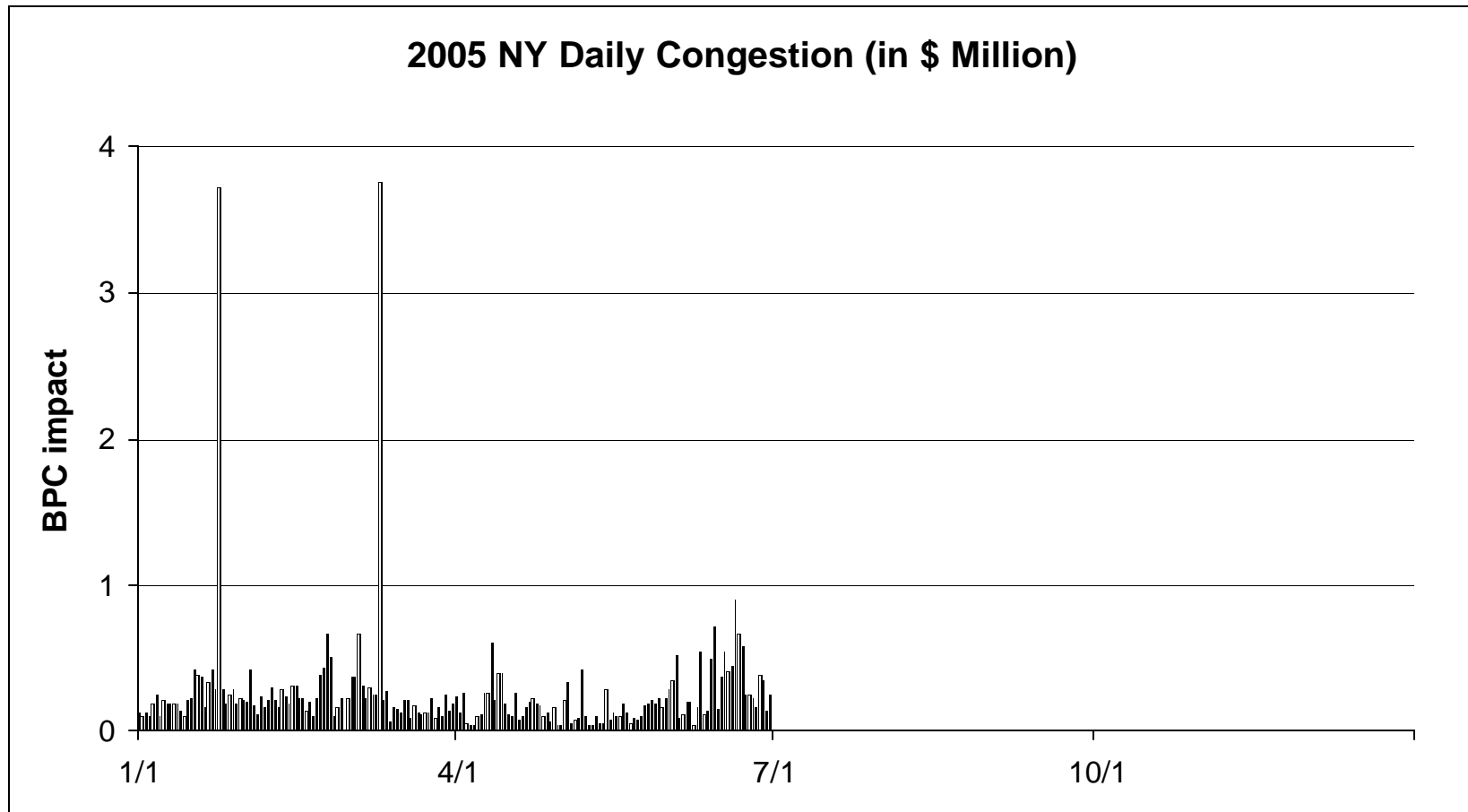
2005 Q2 Constraint summary

Unhedged Congestion Impact by Constraint (Price Increasing Impact only)

Monitored Facility	% of Q2 total	cumulative % of Q2 total
DUNWODIE 345 SHORE_RD 345 1	25.3	25.3
PLSNTVLY 345 LEEDS 345 1	21.5	46.8
W49TH_ST 345 SPRNBRK 345 1	12.3	59.1
CENTRAL EAST - VC	9.8	68.9
RAINEY 138 VERNON 138 1	8.3	77.2
QUENBRDG 138 VERNON 138 1	4.9	82.1
ATHENS 345 LEEDS 345 1	2.8	84.8
SHORE_RD 345 SHORE_RD 138 1	2.6	87.4
CENTRAL EAST	2.6	90.0
RAINEY 345 DUNWODIE 345 1	2.5	92.5
LEEDS 345 N.SCTLND 345 1	1.4	93.9
PLSNTVLY 345 ATHENS 345 1	1.3	95.2
ASTORIAE 138 HELLGT_E 138 1	1.2	96.4
SPRNBRK 345 EGRDNCTY 345 1	0.7	97.1
UPNY CONED	0.6	97.7
EGRDNCTY 138 NEWBRDGE 138 1	0.5	98.2
HUDS_AVE 138 JAMAICA 138 1	0.4	98.5
QUENBRDG 138 VERNON 138 2	0.4	98.9



Congestion Impact By Day



2005 Q2 Congestion Impact Observations

- 2005 Q2 results comparable to previous years
 - Total 2005 congestion so far slightly higher than previous years
 - Higher than 2004 Q2, similar to 2003 Q2
- No (obviously) unusual days in Q2
- Constraints similar as in previous years



Posting of Congestion Impact Reports

- 2003, 2004, 2005 Q1 already posted
- Posting Location: in planning section of NYISO website
- Posting Style: Excel spreadsheets, separate per report type
- Posting Frequency: Quarterly
- Explanatory documents also posted



Next Steps

- Continue posting numbers quarterly
- Incorporate comments / expand explanatory info
- Improve data acquisition process
- Ensure integrity of SMD-style data format

