

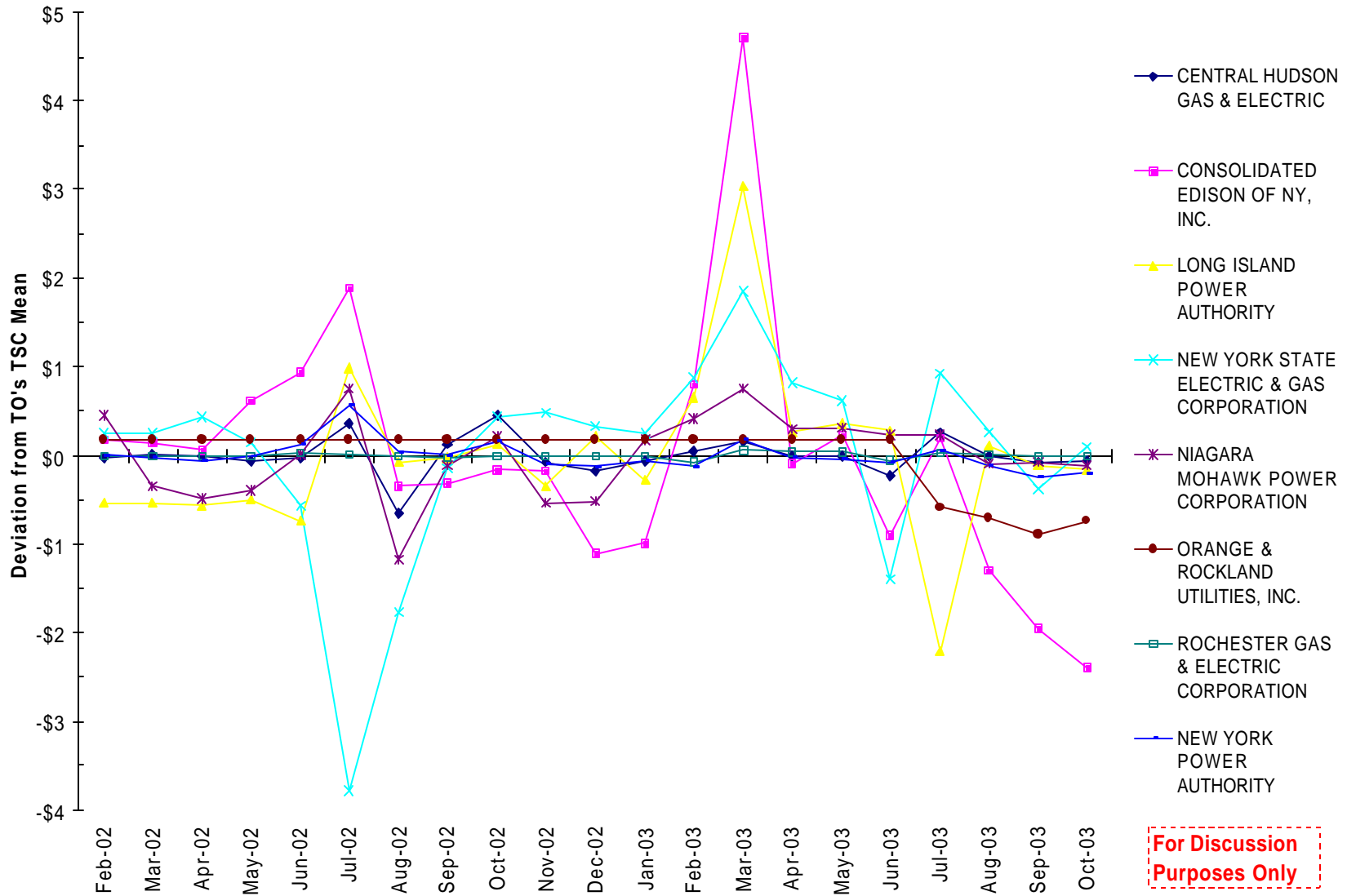
# Market Structures Working Group

October 31, 2003

## TSC Rates

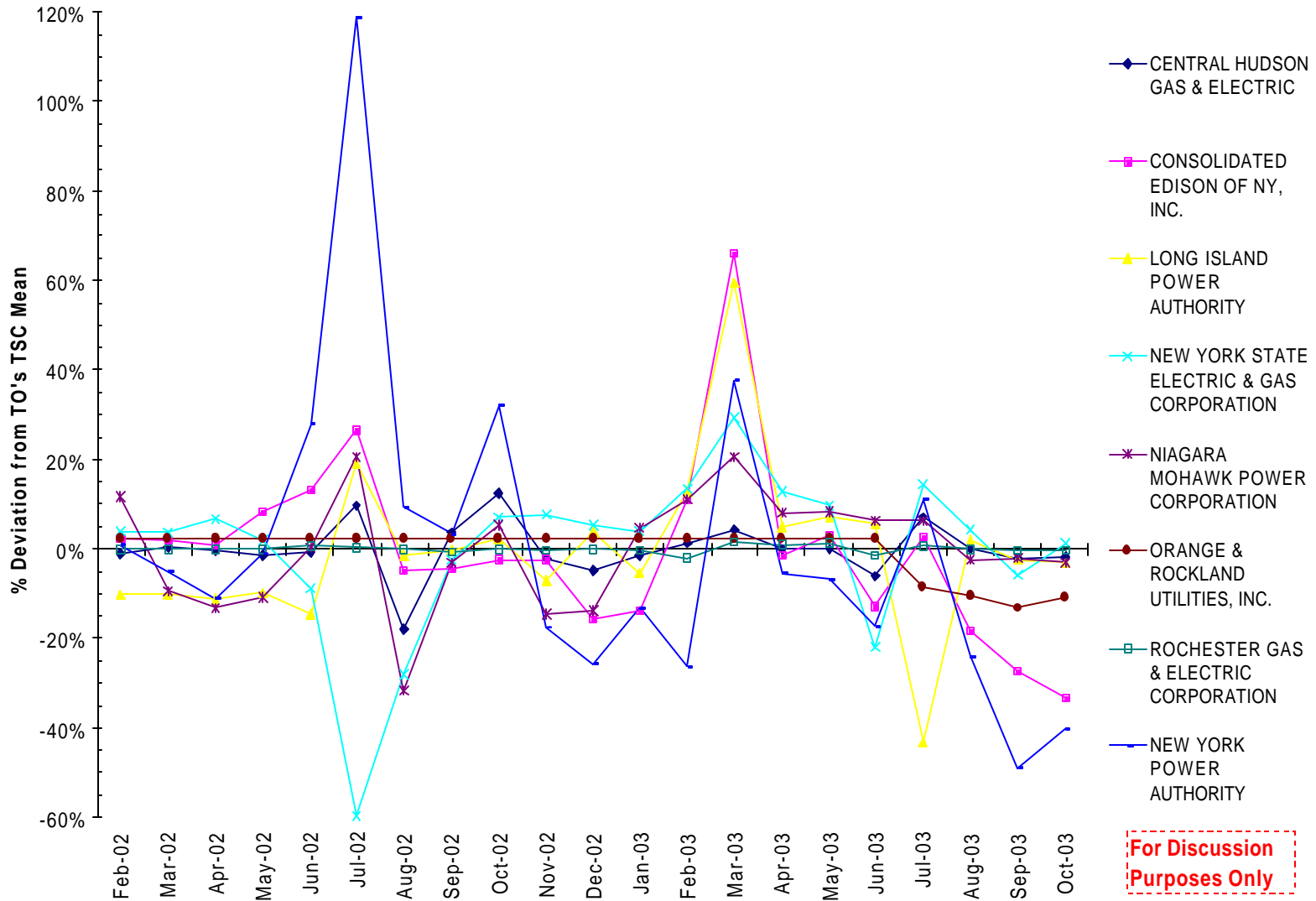
For Discussion Only

# Deviation (\$/MWh) from TO's TSC Mean



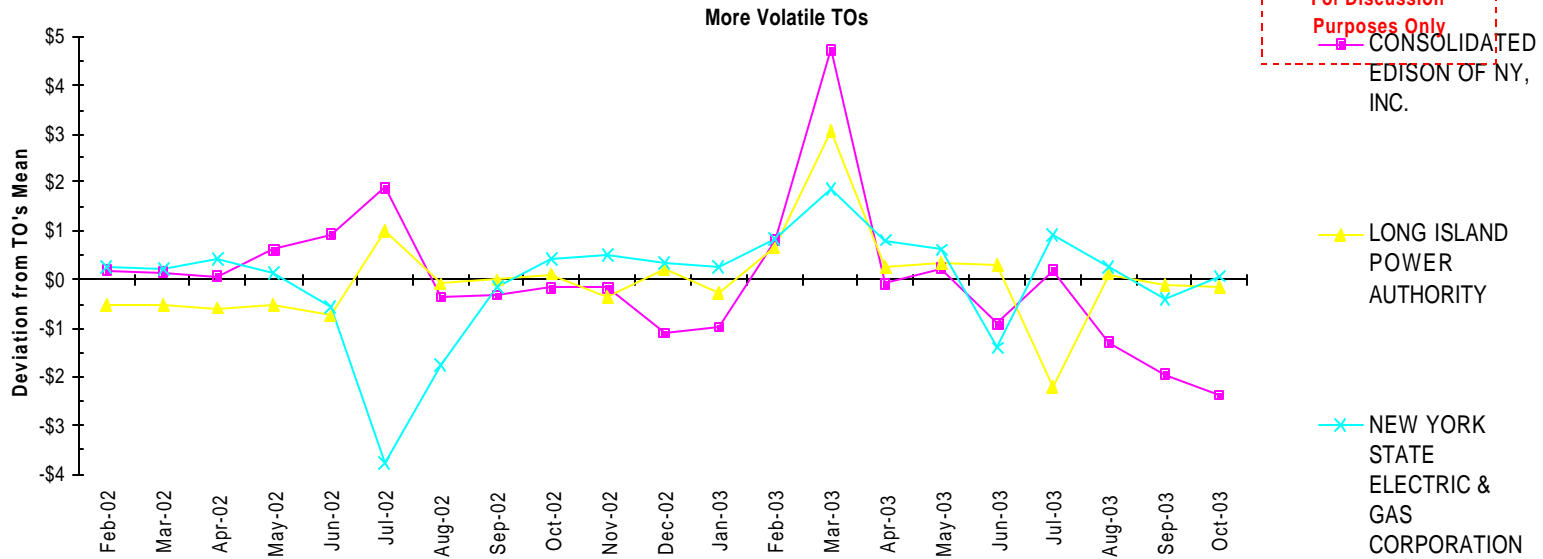
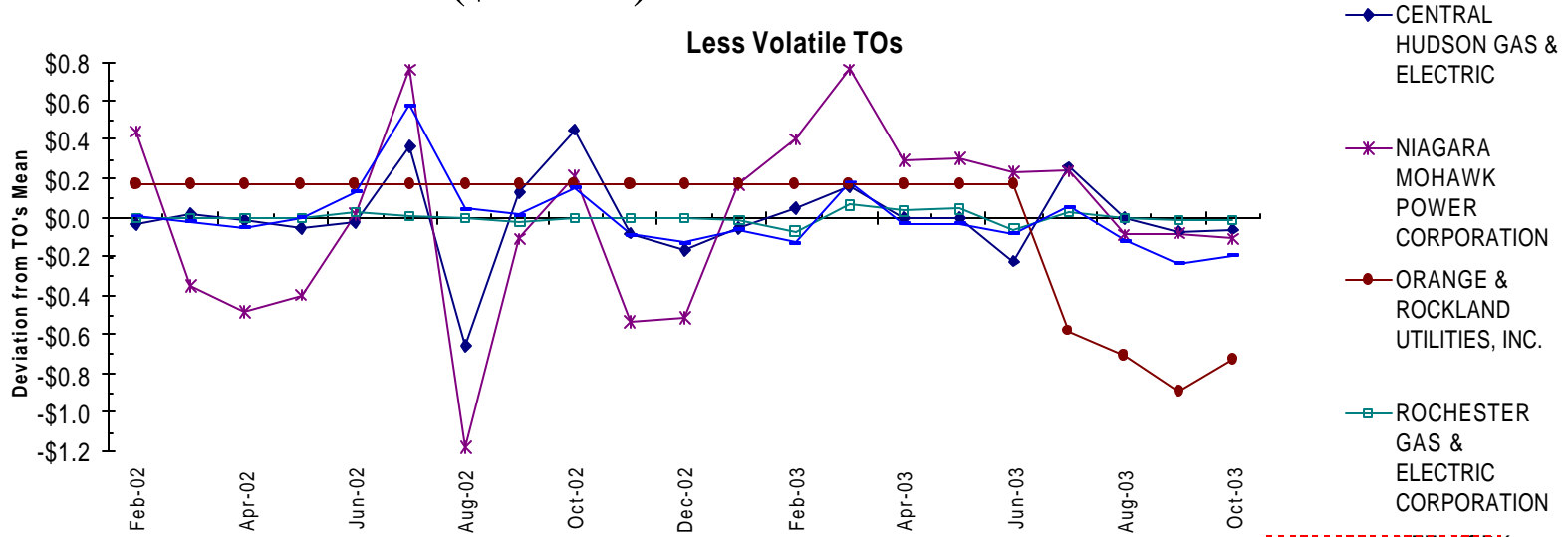
For Discussion Only

# Deviation (%) from TO's TSC Mean



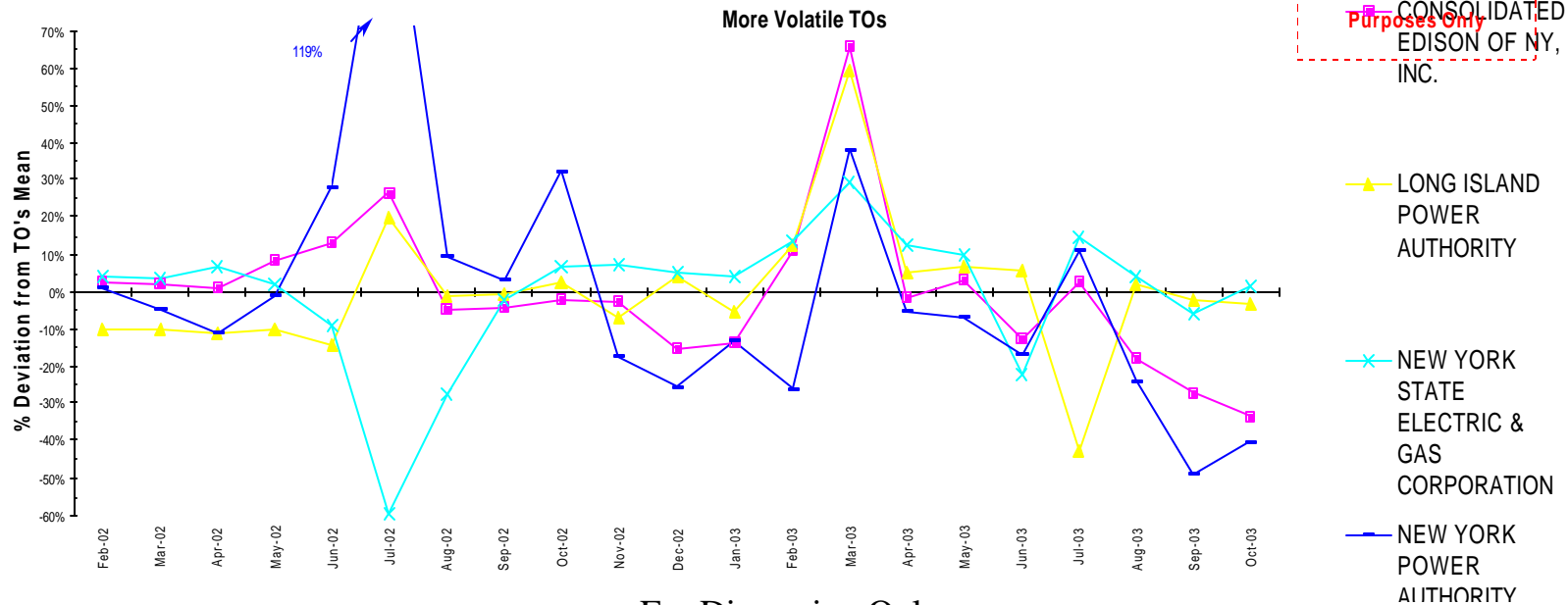
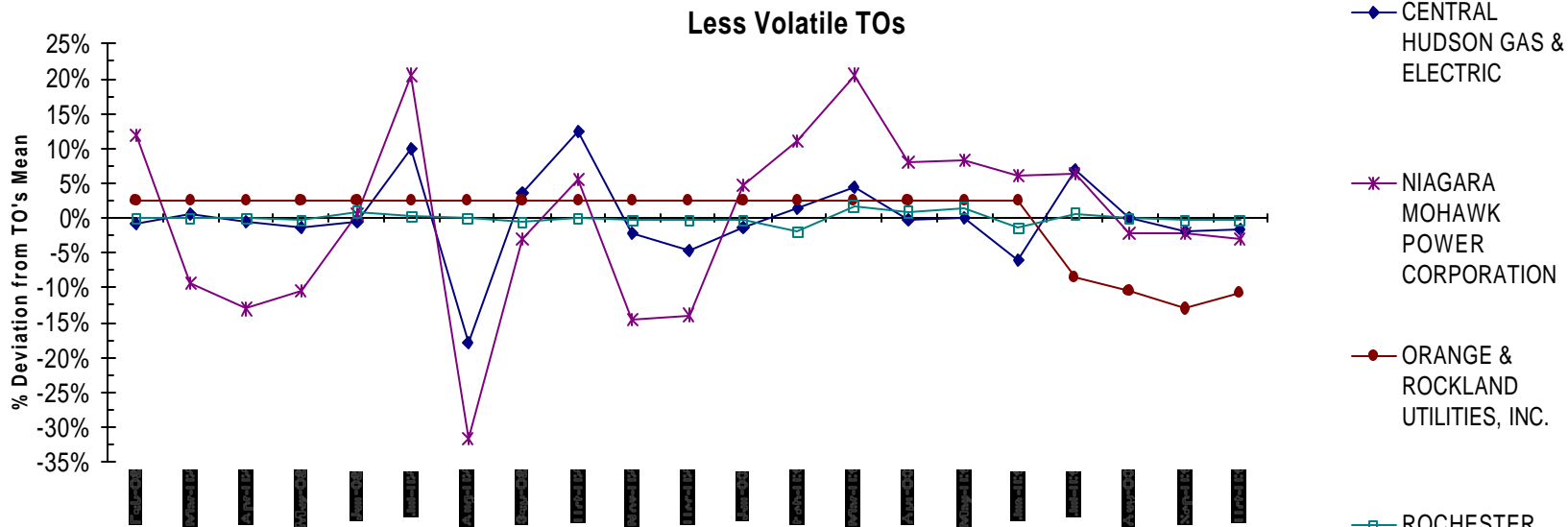
For Discussion Only

# Deviation (\$/MWh) from TO's TSC Mean



For Discussion Only

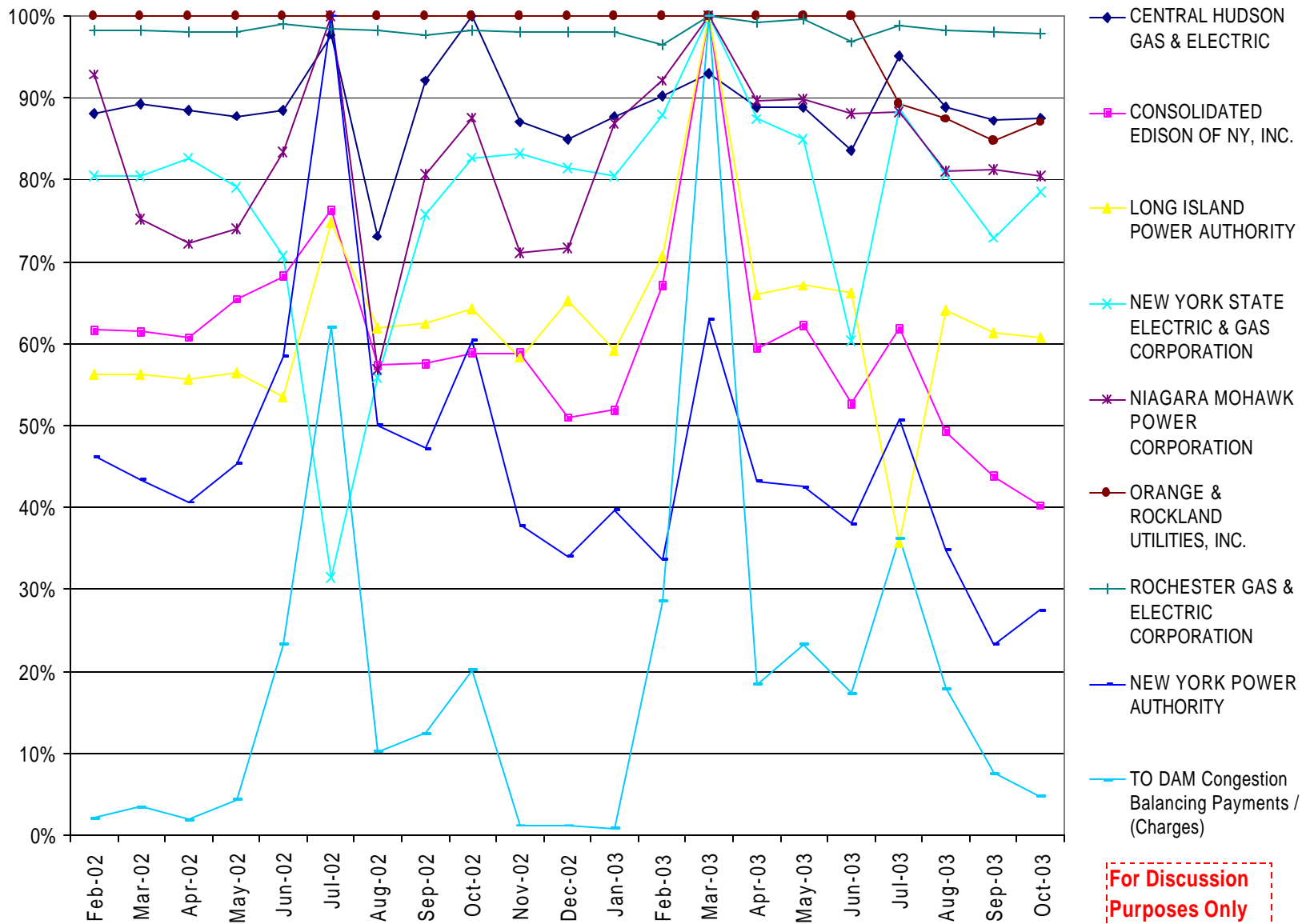
# Deviation (%) from TO's TSC Mean



For Discussion Purposes Only

For Discussion Only

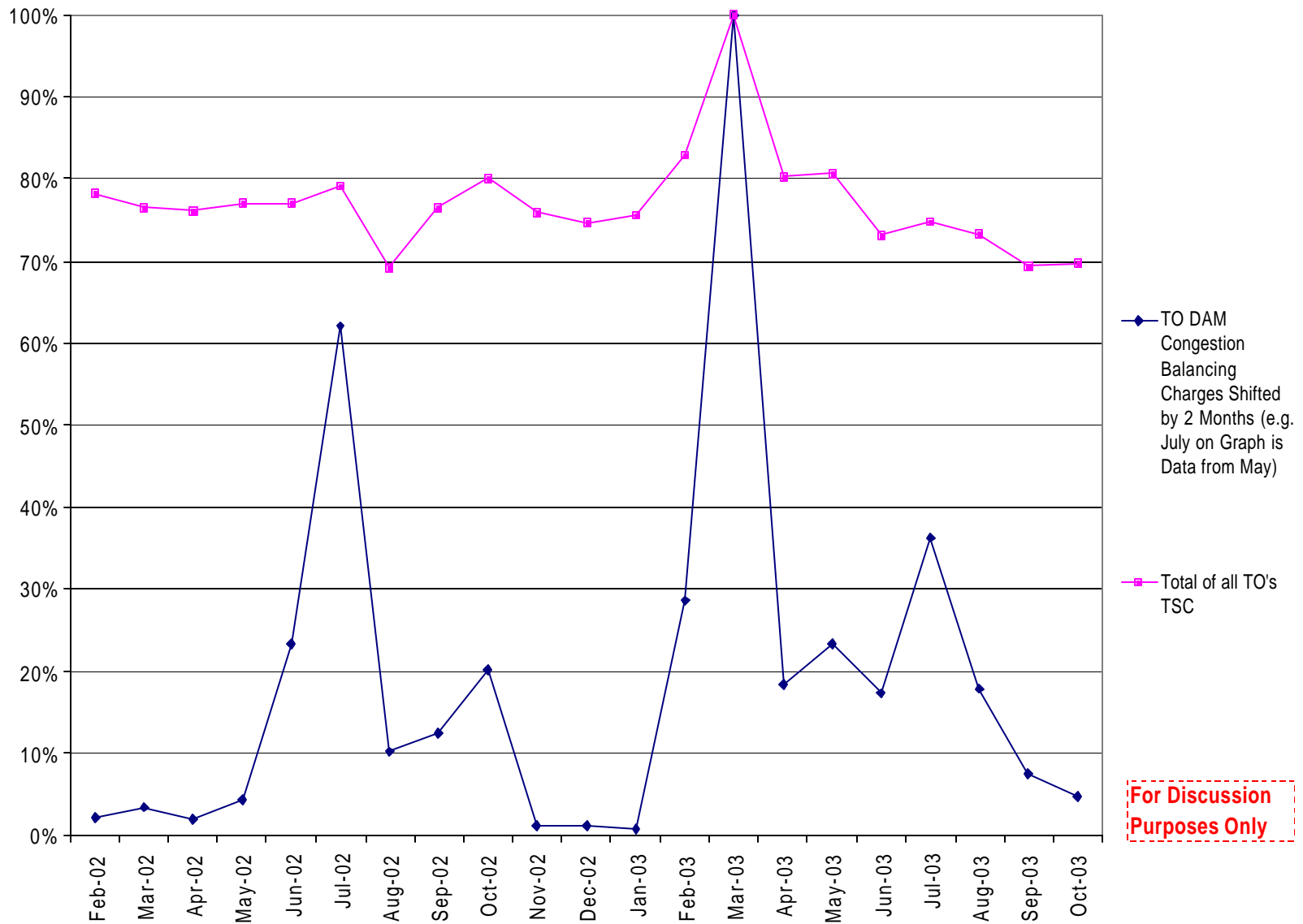
# Normalized TO TSCs & DAM Shortfalls



For Discussion Only

For Discussion  
Purposes Only

# Normalized Total of All TO TSCs & DAM Shortfalls



**For Discussion  
Purposes Only**

For Discussion Only