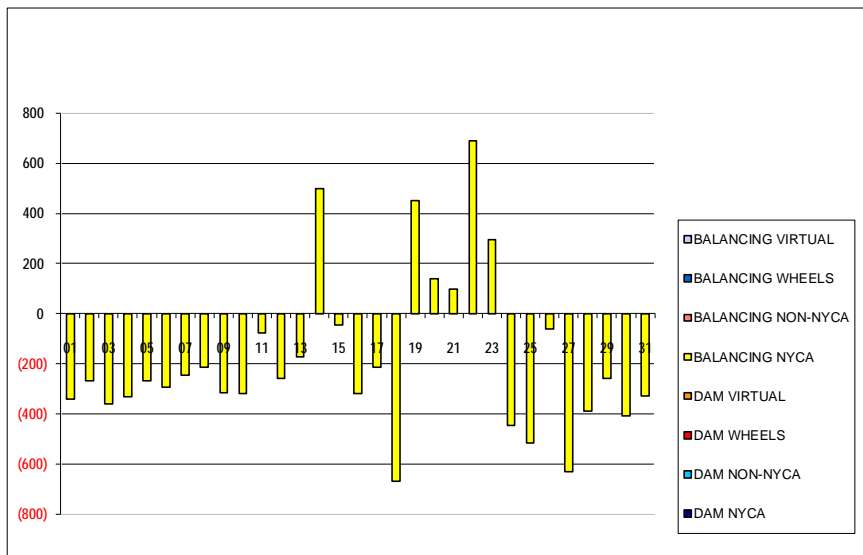


SETTLEMENTS REPORT
 March 2020 Settlement Adjustment
 August 7, 2020

Settlement Adjustment – Market Supply Delta Analysis

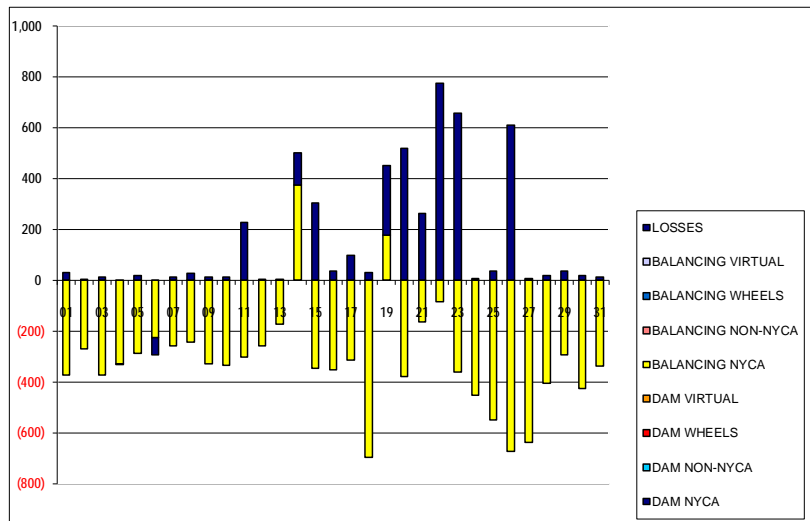
	MONDAY	TUESDAY	WEDNESDAY	THURSDAY	FRIDAY	SATURDAY	SUNDAY
DAM NYCA							1
DAM NON-NYCA							0
DAM WHEELS							0
DAM VIRTUAL							0
BALANCING NYCA							(343)
BALANCING NON-NYCA							0
BALANCING WHEELS							0
BALANCING VIRTUAL							0
	2	3	4	5	6	7	8
DAM NYCA	0	0	0	0	0	0	0
DAM NON-NYCA	0	0	0	0	0	0	0
DAM WHEELS	0	0	0	0	0	0	0
DAM VIRTUAL	0	0	0	0	0	0	0
BALANCING NYCA	(267)	(360)	(332)	(269)	(293)	(247)	(215)
BALANCING NON-NYCA	0	0	0	0	0	0	0
BALANCING WHEELS	0	0	0	0	0	0	0
BALANCING VIRTUAL	0	0	0	0	0	0	0
	9	10	11	12	13	14	15
DAM NYCA	0	0	0	0	0	0	0
DAM NON-NYCA	0	0	0	0	0	0	0
DAM WHEELS	0	0	0	0	0	0	0
DAM VIRTUAL	0	0	0	0	0	0	0
BALANCING NYCA	(317)	(320)	(77)	(257)	(171)	500	(45)
BALANCING NON-NYCA	0	0	0	0	0	0	0
BALANCING WHEELS	0	0	0	0	0	0	0
BALANCING VIRTUAL	0	0	0	0	0	0	0
	16	17	18	19	20	21	22
DAM NYCA	0	0	0	0	0	0	0
DAM NON-NYCA	0	0	0	0	0	0	0
DAM WHEELS	0	0	0	0	0	0	0
DAM VIRTUAL	0	0	0	0	0	0	0
BALANCING NYCA	(318)	(215)	(668)	451	138	98	690
BALANCING NON-NYCA	0	0	0	0	0	0	0
BALANCING WHEELS	0	0	0	0	0	0	0
BALANCING VIRTUAL	0	0	0	0	0	0	0
	23	24	25	26	27	28	29
DAM NYCA	0	0	0	0	0	0	0
DAM NON-NYCA	0	0	0	0	0	0	0
DAM WHEELS	0	0	0	0	0	0	0
DAM VIRTUAL	0	0	0	0	0	0	0
BALANCING NYCA	296	(446)	(515)	(63)	(630)	(387)	(258)
BALANCING NON-NYCA	0	0	0	0	0	0	0
BALANCING WHEELS	0	0	0	0	0	0	0
BALANCING VIRTUAL	0	0	0	0	0	0	0
	30	31					
DAM NYCA	0	0					
DAM NON-NYCA	0	0					
DAM WHEELS	0	0					
DAM VIRTUAL	0	0					
BALANCING NYCA	(410)	(327)					
BALANCING NON-NYCA	0	0					
BALANCING WHEELS	0	0					
BALANCING VIRTUAL	0	0					



SETTLEMENTS REPORT
 March 2020 Settlement Adjustment
 August 7, 2020

Settlement Adjustment – Market Withdrawals Delta Analysis

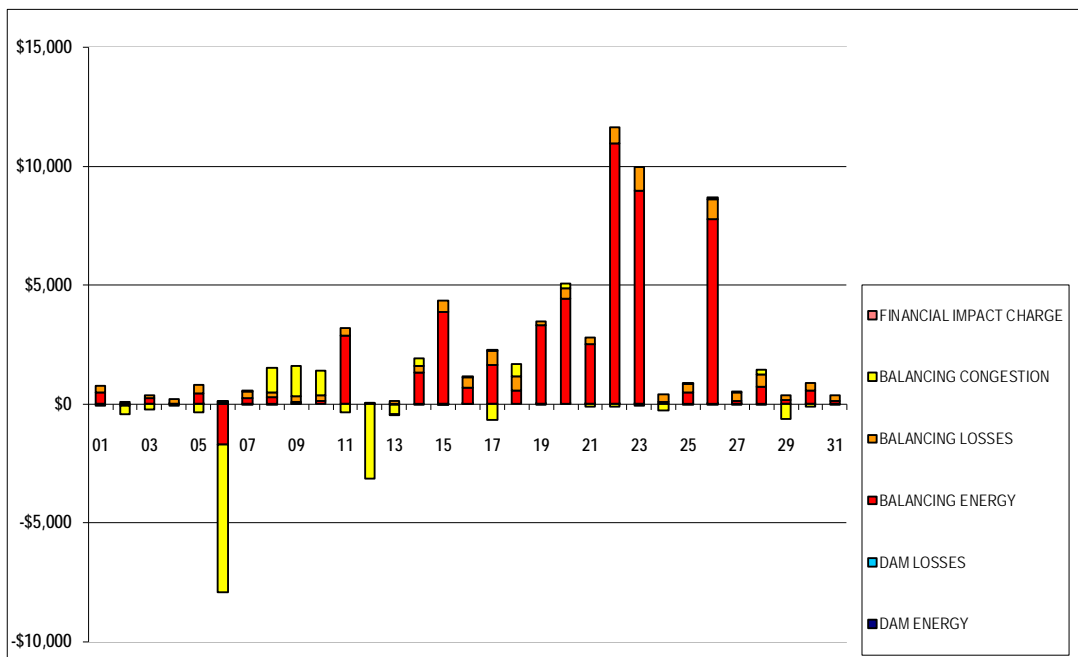
	MONDAY	TUESDAY	WEDNESDAY	THURSDAY	FRIDAY	SATURDAY	SUNDAY
DAM NYCA							1
DAM NON-NYCA							0
DAM WHEELS							0
DAM VIRTUAL							0
BALANCING NYCA							(373)
BALANCING NON-NYCA							0
BALANCING WHEELS							0
BALANCING VIRTUAL							0
UFE/LOSSES							30
	2	3	4	5	6	7	8
DAM NYCA	0	0	0	0	0	0	0
DAM NON-NYCA	0	0	0	0	0	0	0
DAM WHEELS	0	0	0	0	0	0	0
DAM VIRTUAL	0	0	0	0	0	0	0
BALANCING NYCA	(270)	(372)	(329)	(287)	(225)	(259)	(243)
BALANCING NON-NYCA	0	0	0	0	0	0	0
BALANCING WHEELS	0	0	0	0	0	0	0
BALANCING VIRTUAL	0	0	0	0	0	0	0
UFE/LOSSES	3	12	(3)	18	(68)	12	27
	9	10	11	12	13	14	15
DAM NYCA	0	0	0	0	0	0	0
DAM NON-NYCA	0	0	0	0	0	0	0
DAM WHEELS	0	0	0	0	0	0	0
DAM VIRTUAL	0	0	0	0	0	0	0
BALANCING NYCA	(328)	(334)	(304)	(258)	(173)	373	(347)
BALANCING NON-NYCA	0	0	0	0	0	0	0
BALANCING WHEELS	0	0	0	0	0	0	0
BALANCING VIRTUAL	0	0	0	0	0	0	0
UFE/LOSSES	11	14	227	1	2	127	302
	16	17	18	19	20	21	22
DAM NYCA	0	0	0	0	0	0	0
DAM NON-NYCA	0	0	0	0	0	0	0
DAM WHEELS	0	0	0	0	0	0	0
DAM VIRTUAL	0	0	0	0	0	0	0
BALANCING NYCA	(354)	(314)	(698)	177	(380)	(165)	(83)
BALANCING NON-NYCA	0	0	0	0	0	0	0
BALANCING WHEELS	0	0	0	0	0	0	0
BALANCING VIRTUAL	0	0	0	0	0	0	0
UFE/LOSSES	36	99	30	274	518	263	774
	23	24	25	26	27	28	29
DAM NYCA	0	0	0	0	0	0	0
DAM NON-NYCA	0	0	0	0	0	0	0
DAM WHEELS	0	0	0	0	0	0	0
DAM VIRTUAL	0	0	0	0	0	0	0
BALANCING NYCA	(362)	(453)	(551)	(673)	(637)	(404)	(293)
BALANCING NON-NYCA	0	0	0	0	0	0	0
BALANCING WHEELS	0	0	0	0	0	0	0
BALANCING VIRTUAL	0	0	0	0	0	0	0
UFE/LOSSES	658	7	36	610	7	17	35
	30	31					
DAM NYCA	0	0					
DAM NON-NYCA	0	0					
DAM WHEELS	0	0					
DAM VIRTUAL	0	0					
BALANCING NYCA	(427)	(338)					
BALANCING NON-NYCA	0	0					
BALANCING WHEELS	0	0					
BALANCING VIRTUAL	0	0					
UFE/LOSSES	18	11					



SETTLEMENTS REPORT
 March 2020 Settlement Adjustment
 August 7, 2020

Settlement Adjustment – Market Residuals Delta Analysis

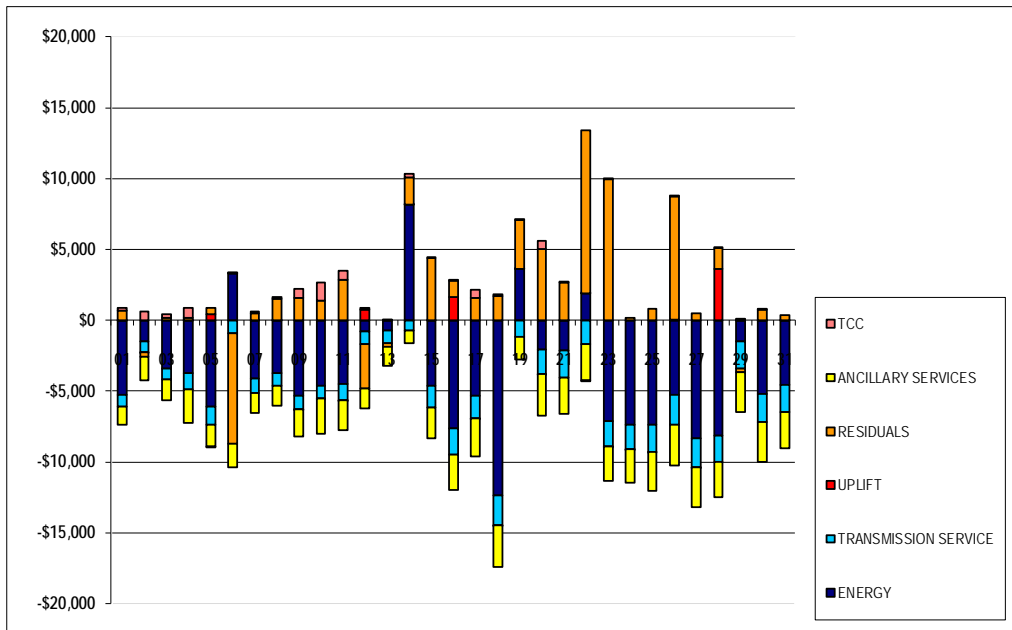
	MONDAY	TUESDAY	WEDNESDAY	THURSDAY	FRIDAY	SATURDAY	SUNDAY
							1
DAM ENERGY							\$0.00
DAM LOSSES							\$0.00
BALANCING ENERGY							\$497.67
BALANCING LOSSES							\$266.48
BALANCING CONGESTION							(\$71.58)
FINANCIAL IMPACT CHARGE							\$0.00
	2	3	4	5	6	7	8
DAM ENERGY	\$0.00	(\$0.01)	\$0.00	(\$0.01)	\$0.00	\$0.00	\$0.00
DAM LOSSES	\$0.00	\$0.00	\$0.00	\$0.01	\$0.00	\$0.00	(\$0.01)
BALANCING ENERGY	(\$81.70)	\$233.52	\$24.21	\$454.79	(\$1,689.17)	\$229.89	\$308.39
BALANCING LOSSES	\$90.71	\$146.13	\$185.25	\$359.23	\$88.54	\$297.31	\$181.28
BALANCING CONGESTION	(\$348.44)	(\$231.73)	(\$61.06)	(\$361.76)	(\$6,229.47)	(\$3.12)	\$1,035.70
FINANCIAL IMPACT CHARGE	\$0.00	\$0.00	\$0.00	\$0.00	\$0.01	\$0.02	\$0.00
	9	10	11	12	13	14	15
DAM ENERGY	\$0.01	\$0.00	\$0.00	\$0.00	\$0.00	\$0.00	\$0.00
DAM LOSSES	\$0.00	\$0.00	\$0.00	\$0.01	\$0.01	(\$0.01)	(\$0.01)
BALANCING ENERGY	\$99.18	\$147.24	\$2,886.90	\$13.65	(\$22.28)	\$1,334.51	\$3,877.57
BALANCING LOSSES	\$234.24	\$233.19	\$299.52	(\$4.21)	\$112.36	\$252.64	\$492.98
BALANCING CONGESTION	\$1,272.85	\$1,010.95	(\$349.28)	(\$3,127.73)	(\$405.04)	\$318.14	(\$0.67)
FINANCIAL IMPACT CHARGE	\$0.00	\$0.00	\$0.00	\$0.00	(\$0.05)	\$0.00	\$0.00
	16	17	18	19	20	21	22
DAM ENERGY	\$0.01	\$0.00	\$0.00	\$0.01	\$0.00	\$0.01	(\$0.01)
DAM LOSSES	\$0.01	\$0.00	\$0.00	\$0.00	\$0.01	(\$0.01)	\$0.01
BALANCING ENERGY	\$686.66	\$1,662.96	\$560.01	\$3,303.19	\$4,422.36	\$2,520.34	\$10,953.05
BALANCING LOSSES	\$452.02	\$588.93	\$593.72	\$178.59	\$461.83	\$271.06	\$696.00
BALANCING CONGESTION	\$14.05	(\$656.28)	\$531.46	(\$0.02)	\$169.74	(\$119.10)	(\$110.78)
FINANCIAL IMPACT CHARGE	\$0.00	\$0.07	\$0.00	\$0.00	\$0.00	\$0.00	\$0.00
	23	24	25	26	27	28	29
DAM ENERGY	\$0.00	\$0.00	(\$0.01)	(\$0.01)	(\$0.01)	\$0.00	\$0.00
DAM LOSSES	\$0.01	\$0.00	\$0.00	\$0.01	\$0.01	(\$0.01)	\$0.00
BALANCING ENERGY	\$8,978.10	\$73.15	\$477.03	\$7,767.67	\$133.29	\$738.46	\$172.86
BALANCING LOSSES	\$1,005.15	\$334.89	\$361.81	\$858.62	\$361.92	\$521.33	\$195.59
BALANCING CONGESTION	(\$56.20)	(\$256.69)	\$0.01	\$73.07	\$2.26	\$193.87	(\$625.92)
FINANCIAL IMPACT CHARGE	\$0.00	\$0.00	\$0.00	\$0.00	\$0.00	\$0.00	\$0.00
	30	31					
DAM ENERGY	\$0.01	\$0.00					
DAM LOSSES	\$0.00	\$0.00					
BALANCING ENERGY	\$549.02	\$127.46					
BALANCING LOSSES	\$325.09	\$247.90					
BALANCING CONGESTION	(\$112.96)	(\$11.00)					
FINANCIAL IMPACT CHARGE	\$0.00	\$0.00					



SETTLEMENTS REPORT
 March 2020 Settlement Adjustment
 August 7, 2020

Settlement Adjustment – Market Costs Delta Analysis

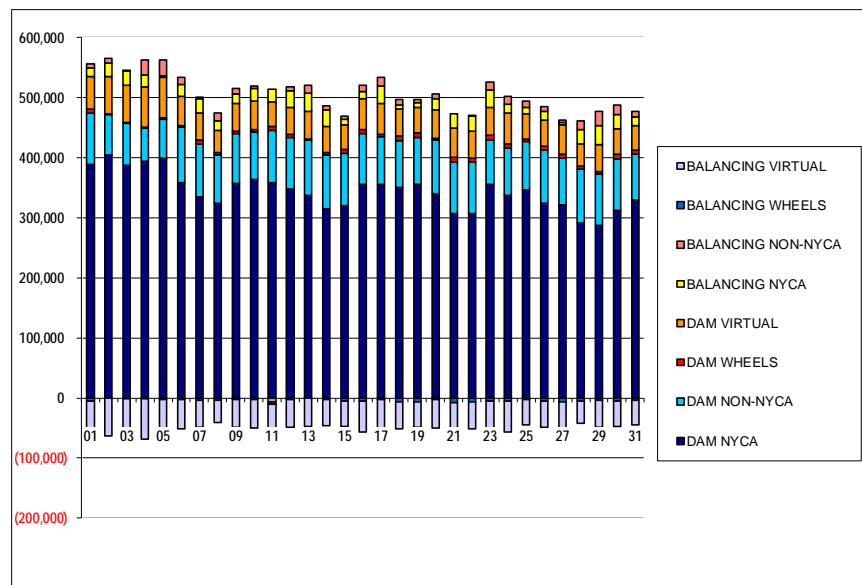
	MONDAY	TUESDAY	WEDNESDAY	THURSDAY	FRIDAY	SATURDAY	SUNDAY
ENERGY							1 (\$5,263.64)
TRANSMISSION SERVICE							(\$824.42)
UPLIFT							\$0.38
RESIDUALS							\$692.57
ANCILLARY SERVICES							(\$1,279.87)
TCC							\$173.58
	2	3	4	5	6	7	8
ENERGY	(\$1,470.78)	(\$3,391.25)	(\$3,754.42)	(\$6,118.25)	\$3,339.67	(\$4,112.61)	(\$3,734.26)
TRANSMISSION SERVICE	(\$755.30)	(\$801.79)	(\$1,149.59)	(\$1,259.12)	(\$885.66)	(\$1,003.77)	(\$913.46)
UPLIFT	(\$1.18)	\$0.00	\$0.14	\$458.30	\$0.23	\$0.11	\$0.77
RESIDUALS	(\$339.43)	\$147.91	\$148.40	\$452.26	(\$7,830.09)	\$524.10	\$1,525.36
ANCILLARY SERVICES	(\$1,663.46)	(\$1,444.76)	(\$2,347.39)	(\$1,503.16)	(\$1,675.95)	(\$1,428.86)	(\$1,379.79)
TCC	\$595.83	\$284.64	\$745.98	(\$114.93)	\$53.79	\$112.17	\$137.76
	9	10	11	12	13	14	15
ENERGY	(\$5,341.05)	(\$4,628.85)	(\$4,488.87)	(\$781.07)	(\$691.99)	\$8,152.54	(\$4,630.91)
TRANSMISSION SERVICE	(\$936.31)	(\$874.87)	(\$1,144.87)	(\$927.02)	(\$890.27)	(\$706.35)	(\$1,538.75)
UPLIFT	(\$0.09)	(\$1.80)	(\$12.07)	\$720.09	\$0.36	\$18.37	\$2.33
RESIDUALS	\$1,606.28	\$1,391.38	\$2,837.14	(\$3,118.28)	(\$315.00)	\$1,905.28	\$4,369.87
ANCILLARY SERVICES	(\$1,932.55)	(\$2,495.83)	(\$2,100.13)	(\$1,421.50)	(\$1,298.60)	(\$923.14)	(\$2,135.42)
TCC	\$615.21	\$1,264.71	\$646.77	\$134.76	\$60.87	\$250.83	\$20.97
	16	17	18	19	20	21	22
ENERGY	(\$7,616.53)	(\$5,327.19)	(\$12,375.50)	\$3,615.25	(\$2,090.47)	(\$2,127.02)	\$1,887.12
TRANSMISSION SERVICE	(\$1,854.34)	(\$1,576.99)	(\$2,082.59)	(\$1,196.25)	(\$1,692.64)	(\$1,896.38)	(\$1,701.75)
UPLIFT	\$1,618.78	(\$0.57)	(\$0.37)	\$4.79	(\$1.90)	\$2.29	\$1.50
RESIDUALS	\$1,152.75	\$1,595.68	\$1,685.19	\$3,481.77	\$5,053.94	\$2,672.30	\$11,538.27
ANCILLARY SERVICES	(\$2,506.23)	(\$2,693.52)	(\$2,972.53)	(\$1,582.89)	(\$2,960.47)	(\$2,575.38)	(\$2,549.90)
TCC	\$25.74	\$536.97	\$141.51	\$18.39	\$584.82	\$4.71	(\$0.42)
	23	24	25	26	27	28	29
ENERGY	(\$7,101.92)	(\$7,364.22)	(\$7,338.29)	(\$5,280.00)	(\$8,354.12)	(\$8,108.32)	(\$1,498.47)
TRANSMISSION SERVICE	(\$1,792.40)	(\$1,707.49)	(\$1,948.32)	(\$2,071.25)	(\$2,016.29)	(\$1,848.46)	(\$1,930.96)
UPLIFT	(\$4.33)	(\$11.57)	(\$1.13)	\$55.74	(\$1.33)	\$3,636.71	\$0.01
RESIDUALS	\$9,927.06	\$151.35	\$838.84	\$8,699.36	\$497.47	\$1,453.65	(\$257.47)
ANCILLARY SERVICES	(\$2,452.32)	(\$2,382.83)	(\$2,731.88)	(\$2,886.05)	(\$2,813.72)	(\$2,537.13)	(\$2,760.07)
TCC	\$5.43	\$0.00	\$0.00	\$11.43	\$0.00	\$19.65	\$107.97
	30	31					
ENERGY	(\$5,215.46)	(\$4,561.86)					
TRANSMISSION SERVICE	(\$1,978.64)	(\$1,896.63)					
UPLIFT	\$0.97	\$0.65					
RESIDUALS	\$761.16	\$364.36					
ANCILLARY SERVICES	(\$2,790.37)	(\$2,590.35)					
TCC	\$39.78	\$0.00					



SETTLEMENTS REPORT
 March 2020 Settlement Adjustment
 August 7, 2020

Initial Settlement – Market Supply Analysis

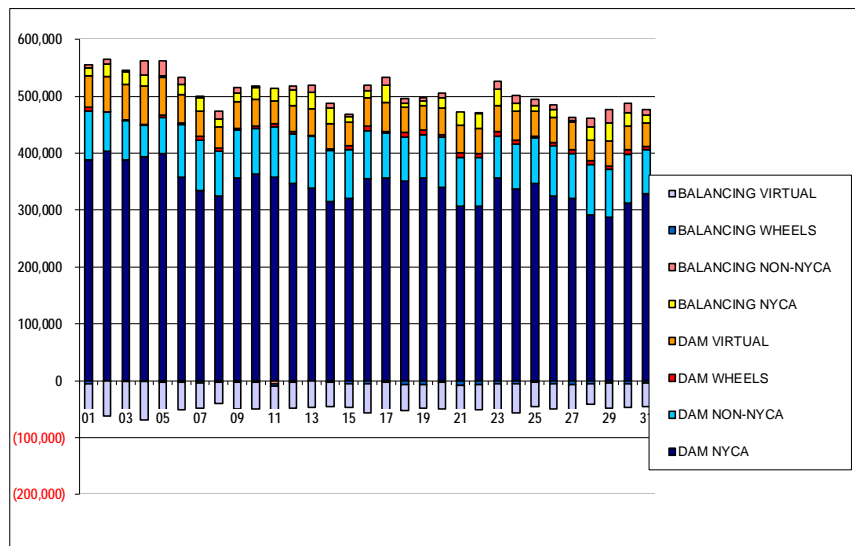
	MONDAY	TUESDAY	WEDNESDAY	THURSDAY	FRIDAY	SATURDAY	SUNDAY
DAM NYCA							1
DAM NON-NYCA							388,531
DAM WHEELS							85,297
DAM VIRTUAL							7,605
BALANCING NYCA							54,243
BALANCING NON-NYCA							14,515
BALANCING WHEELS							5,522
BALANCING VIRTUAL							(5,305)
							(54,243)
	2	3	4	5	6	7	8
DAM NYCA	404,071	387,746	393,890	398,794	358,464	334,575	324,516
DAM NON-NYCA	68,239	70,028	55,149	64,882	91,707	88,105	79,686
DAM WHEELS	654	1,174	1,332	2,786	3,060	6,865	4,470
DAM VIRTUAL	62,130	62,224	67,384	66,903	49,417	44,457	37,091
BALANCING NYCA	22,314	22,910	19,847	3,504	19,265	23,578	15,345
BALANCING NON-NYCA	8,178	1,649	24,907	25,256	12,273	3,546	13,483
BALANCING WHEELS	(454)	(1,174)	(1,332)	(2,786)	(2,256)	(4,100)	(3,231)
BALANCING VIRTUAL	(62,130)	(62,224)	(67,384)	(66,903)	(49,417)	(44,457)	(37,091)
	9	10	11	12	13	14	15
DAM NYCA	357,250	363,848	357,918	347,437	338,087	314,894	320,352
DAM NON-NYCA	83,413	79,534	87,888	86,748	91,280	90,035	86,343
DAM WHEELS	3,274	4,004	6,343	4,214	1,403	3,099	6,744
DAM VIRTUAL	46,862	47,436	40,513	45,963	46,825	43,406	41,408
BALANCING NYCA	15,729	20,859	21,004	27,069	29,749	28,096	9,561
BALANCING NON-NYCA	8,869	3,008	(6,058)	6,808	12,869	7,358	4,561
BALANCING WHEELS	(2,074)	(2,504)	(4,161)	(2,639)	(203)	(2,059)	(5,394)
BALANCING VIRTUAL	(46,862)	(47,436)	(40,513)	(45,963)	(46,825)	(43,406)	(41,408)
	16	17	18	19	20	21	22
DAM NYCA	355,751	356,193	351,076	356,411	340,594	306,750	307,212
DAM NON-NYCA	84,190	78,592	77,714	76,662	88,514	86,373	85,220
DAM WHEELS	7,214	3,642	7,721	7,952	3,669	7,880	7,227
DAM VIRTUAL	50,464	51,375	45,069	42,070	46,570	47,869	44,185
BALANCING NYCA	12,172	29,699	6,430	8,495	18,553	23,891	24,899
BALANCING NON-NYCA	10,280	13,924	9,176	5,166	7,801	(336)	2,183
BALANCING WHEELS	(5,529)	(2,424)	(6,771)	(6,852)	(3,161)	(7,458)	(6,579)
BALANCING VIRTUAL	(50,464)	(51,375)	(45,069)	(42,070)	(46,570)	(47,869)	(44,185)
	23	24	25	26	27	28	29
DAM NYCA	356,064	337,085	347,038	324,753	321,168	291,362	287,257
DAM NON-NYCA	73,789	78,807	79,583	87,969	77,856	89,193	85,118
DAM WHEELS	9,213	7,266	3,838	6,715	7,505	6,202	4,637
DAM VIRTUAL	45,611	50,965	43,145	43,831	47,625	36,003	44,410
BALANCING NYCA	28,834	14,347	10,325	13,977	4,150	24,368	31,814
BALANCING NON-NYCA	13,239	13,440	10,717	7,907	4,896	14,815	23,906
BALANCING WHEELS	(5,713)	(5,588)	(2,088)	(5,220)	(6,603)	(5,602)	(3,872)
BALANCING VIRTUAL	(45,611)	(50,965)	(43,145)	(43,831)	(47,625)	(36,003)	(44,410)
	30	31					
DAM NYCA	312,970	329,633					
DAM NON-NYCA	85,391	76,861					
DAM WHEELS	7,689	5,700					
DAM VIRTUAL	41,740	41,641					
BALANCING NYCA	24,015	13,533					
BALANCING NON-NYCA	16,248	9,552					
BALANCING WHEELS	(5,614)	(3,535)					
BALANCING VIRTUAL	(41,740)	(41,641)					



SETTLEMENTS REPORT
 March 2020 Settlement Adjustment
 August 7, 2020

4-Month Settlement Adjustment – Market Supply Analysis

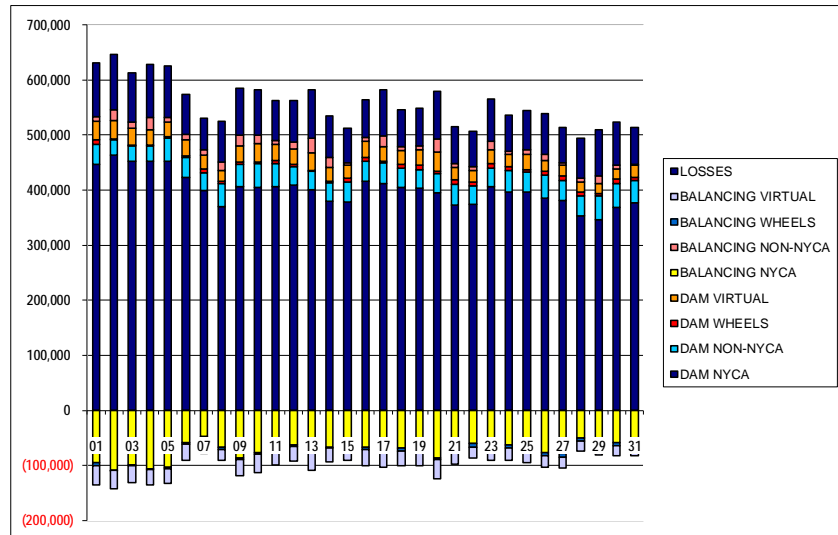
	MONDAY	TUESDAY	WEDNESDAY	THURSDAY	FRIDAY	SATURDAY	SUNDAY
DAM NYCA							1
DAM NON-NYCA							388,531
DAM WHEELS							85,297
DAM VIRTUAL							7,605
BALANCING NYCA							54,243
BALANCING NON-NYCA							14,172
BALANCING WHEELS							5,522
BALANCING VIRTUAL							(5,305)
							(54,243)
	2	3	4	5	6	7	8
DAM NYCA	404,071	387,746	393,890	398,794	358,464	334,575	324,516
DAM NON-NYCA	68,239	70,028	55,149	64,882	91,707	88,105	79,686
DAM WHEELS	654	1,174	1,332	2,786	3,060	6,865	4,470
DAM VIRTUAL	62,130	62,224	67,384	66,903	49,417	44,457	37,091
BALANCING NYCA	22,047	22,550	19,515	3,235	18,972	23,331	15,129
BALANCING NON-NYCA	8,178	1,649	24,907	25,256	12,273	3,546	13,483
BALANCING WHEELS	(454)	(1,174)	(1,332)	(2,786)	(2,256)	(4,100)	(3,231)
BALANCING VIRTUAL	(62,130)	(62,224)	(67,384)	(66,903)	(49,417)	(44,457)	(37,091)
	9	10	11	12	13	14	15
DAM NYCA	357,250	363,848	357,918	347,437	338,087	314,894	320,352
DAM NON-NYCA	83,413	79,534	87,888	86,748	91,280	90,035	86,343
DAM WHEELS	3,274	4,004	6,343	4,214	1,403	3,099	6,744
DAM VIRTUAL	46,862	47,436	40,513	45,963	46,825	43,406	41,408
BALANCING NYCA	15,413	20,539	20,927	26,812	29,577	28,596	9,516
BALANCING NON-NYCA	8,869	3,008	(6,058)	6,808	12,869	7,358	4,561
BALANCING WHEELS	(2,074)	(2,504)	(4,161)	(2,639)	(2,03)	(2,059)	(5,394)
BALANCING VIRTUAL	(46,862)	(47,436)	(40,513)	(45,963)	(46,825)	(43,406)	(41,408)
	16	17	18	19	20	21	22
DAM NYCA	355,751	356,193	351,076	356,411	340,594	306,750	307,212
DAM NON-NYCA	84,190	78,592	77,714	76,662	88,514	86,373	85,220
DAM WHEELS	7,214	3,642	7,721	7,952	3,669	7,880	7,227
DAM VIRTUAL	50,464	51,375	45,069	42,070	46,570	47,869	44,185
BALANCING NYCA	11,854	29,484	5,762	8,946	18,691	23,990	25,589
BALANCING NON-NYCA	10,280	13,924	9,176	5,166	7,801	(336)	2,183
BALANCING WHEELS	(5,529)	(2,424)	(6,771)	(6,852)	(3,161)	(7,458)	(6,579)
BALANCING VIRTUAL	(50,464)	(51,375)	(45,069)	(42,070)	(46,570)	(47,869)	(44,185)
	23	24	25	26	27	28	29
DAM NYCA	356,064	337,085	347,038	324,753	321,168	291,362	287,257
DAM NON-NYCA	73,789	78,807	79,583	87,969	77,856	89,193	85,118
DAM WHEELS	8,213	7,266	3,838	6,715	7,505	6,202	4,637
DAM VIRTUAL	45,611	50,965	43,145	43,831	47,625	36,003	44,410
BALANCING NYCA	29,130	13,901	9,810	13,915	3,519	23,980	31,556
BALANCING NON-NYCA	13,239	13,440	10,717	7,907	4,896	14,815	23,906
BALANCING WHEELS	(5,713)	(5,588)	(2,088)	(5,220)	(6,603)	(5,602)	(3,872)
BALANCING VIRTUAL	(45,611)	(50,965)	(43,145)	(43,831)	(47,625)	(36,003)	(44,410)
	30	31					
DAM NYCA	312,970	329,633					
DAM NON-NYCA	85,391	76,861					
DAM WHEELS	7,689	5,700					
DAM VIRTUAL	41,740	41,641					
BALANCING NYCA	23,606	13,206					
BALANCING NON-NYCA	16,248	9,552					
BALANCING WHEELS	(5,614)	(3,535)					
BALANCING VIRTUAL	(41,740)	(41,641)					



SETTLEMENTS REPORT
 March 2020 Settlement Adjustment
 August 7, 2020

Initial Settlement – Market Withdrawals Analysis

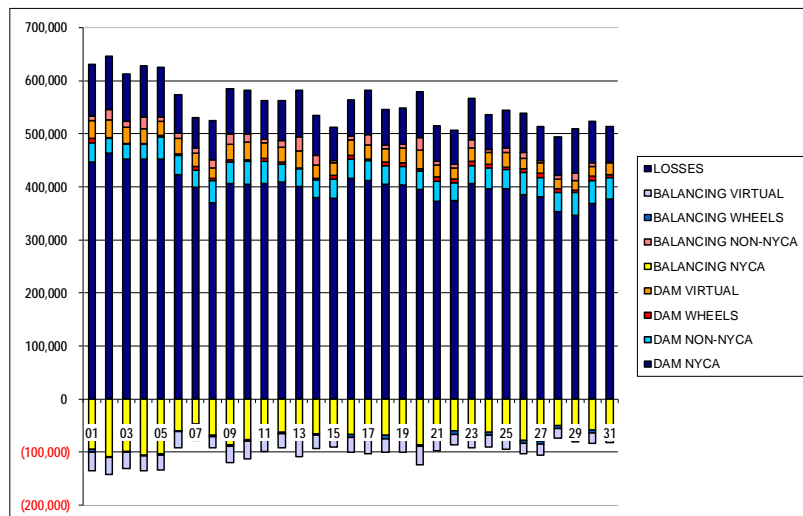
	MONDAY	TUESDAY	WEDNESDAY	THURSDAY	FRIDAY	SATURDAY	SUNDAY
DAM NYCA							1
DAM NON-NYCA							446,180
DAM WHEELS							37,311
DAM VIRTUAL							7,605
BALANCING NYCA							34,356
BALANCING NON-NYCA							(95,093)
BALANCING WHEELS							8,404
BALANCING VIRTUAL							(5,305)
UFE/LOSSES							(34,356)
							97,063
	2	3	4	5	6	7	8
DAM NYCA	463,762	452,800	452,407	452,952	423,529	398,865	370,245
DAM NON-NYCA	28,097	27,821	28,357	41,014	35,613	31,996	41,168
DAM WHEELS	654	1,174	1,332	2,786	3,060	6,865	4,470
DAM VIRTUAL	33,336	30,916	27,351	26,947	29,768	26,372	20,415
BALANCING NYCA	(108,974)	(98,722)	(106,138)	(103,297)	(59,206)	(47,322)	(67,665)
BALANCING NON-NYCA	19,455	11,329	22,025	7,573	9,919	9,511	14,680
BALANCING WHEELS	(454)	(1,174)	(1,332)	(2,786)	(2,256)	(4,100)	(3,231)
BALANCING VIRTUAL	(33,336)	(30,916)	(27,351)	(26,947)	(29,768)	(26,372)	(20,415)
UFE/LOSSES	100,462	89,105	97,142	94,195	71,854	56,754	74,601
	9	10	11	12	13	14	15
DAM NYCA	405,783	405,350	406,148	408,863	401,001	379,606	378,772
DAM NON-NYCA	41,322	42,249	41,413	34,401	33,422	33,632	36,081
DAM WHEELS	3,274	4,004	6,343	4,214	1,403	3,099	6,744
DAM VIRTUAL	30,391	33,350	28,863	27,228	32,250	25,239	23,595
BALANCING NYCA	(86,599)	(76,939)	(66,247)	(62,671)	(76,363)	(66,462)	(61,067)
BALANCING NON-NYCA	19,141	14,428	7,376	11,992	25,694	17,716	3,878
BALANCING WHEELS	(2,074)	(2,504)	(4,161)	(2,639)	(203)	(2,059)	(5,394)
BALANCING VIRTUAL	(30,391)	(33,350)	(28,863)	(27,228)	(32,250)	(25,239)	(23,595)
UFE/LOSSES	85,614	82,161	72,062	75,477	88,232	75,892	63,153
	16	17	18	19	20	21	22
DAM NYCA	415,988	412,363	405,522	403,985	395,119	373,295	374,397
DAM NON-NYCA	36,168	36,866	33,659	33,722	35,338	37,291	33,722
DAM WHEELS	7,214	3,642	7,721	7,952	3,669	7,880	7,227
DAM VIRTUAL	28,635	25,826	25,675	27,638	34,568	22,150	19,879
BALANCING NYCA	(66,337)	(74,433)	(67,878)	(65,738)	(85,880)	(67,824)	(60,071)
BALANCING NON-NYCA	7,169	19,079	6,705	6,451	24,586	8,147	6,860
BALANCING WHEELS	(5,529)	(2,424)	(6,771)	(6,852)	(3,161)	(7,458)	(6,579)
BALANCING VIRTUAL	(28,635)	(25,826)	(25,675)	(27,638)	(34,568)	(22,150)	(19,879)
UFE/LOSSES	69,405	84,533	66,389	68,314	86,299	65,770	64,606
	23	24	25	26	27	28	29
DAM NYCA	406,650	396,131	395,993	386,042	381,316	352,990	346,504
DAM NON-NYCA	33,460	39,568	36,599	40,795	36,715	37,079	42,671
DAM WHEELS	8,213	7,266	3,838	6,715	7,505	6,202	4,637
DAM VIRTUAL	25,443	22,630	27,950	20,168	20,290	17,992	18,137
BALANCING NYCA	(60,085)	(62,599)	(64,614)	(77,372)	(78,288)	(49,817)	(59,088)
BALANCING NON-NYCA	15,435	4,869	8,747	11,051	4,056	7,717	14,031
BALANCING WHEELS	(5,713)	(5,588)	(2,088)	(5,220)	(6,603)	(5,602)	(3,872)
BALANCING VIRTUAL	(25,443)	(22,630)	(27,950)	(20,168)	(20,290)	(17,992)	(18,137)
UFE/LOSSES	76,465	65,709	70,937	74,091	64,270	71,769	83,977
	30	31					
DAM NYCA	368,886	377,338					
DAM NON-NYCA	43,075	39,497					
DAM WHEELS	7,689	5,700					
DAM VIRTUAL	18,713	22,302					
BALANCING NYCA	(58,673)	(56,123)					
BALANCING NON-NYCA	7,296	2,474					
BALANCING WHEELS	(5,614)	(3,535)					
BALANCING VIRTUAL	(18,713)	(22,302)					
UFE/LOSSES	78,040	66,393					



SETTLEMENTS REPORT
 March 2020 Settlement Adjustment
 August 7, 2020

4-Month Settlement Adjustment – Market Withdrawals Analysis

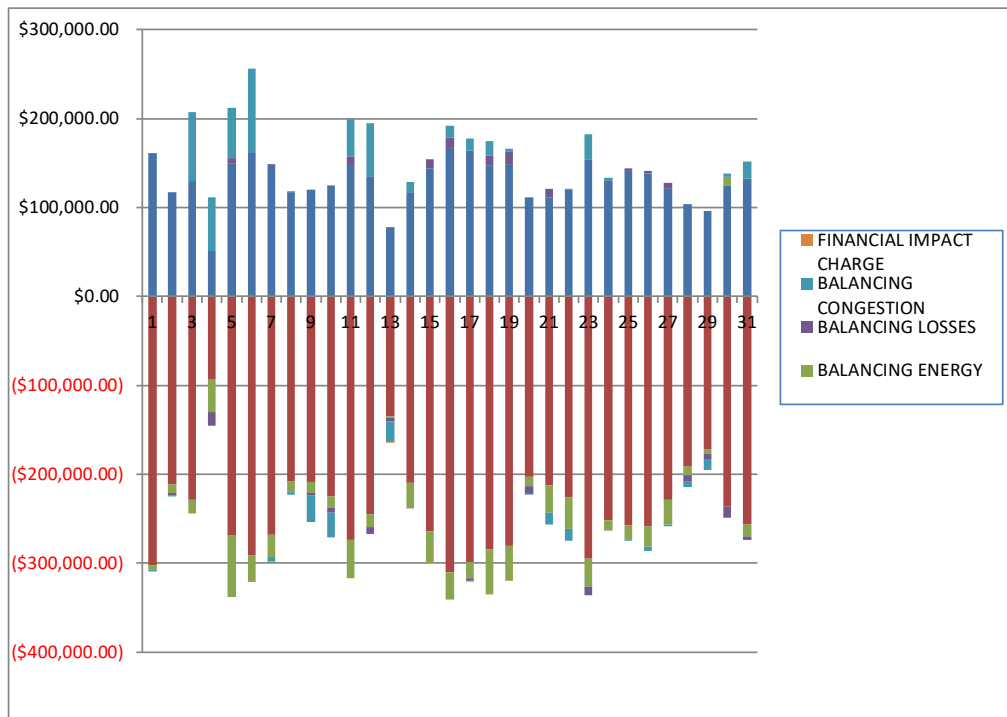
	MONDAY	TUESDAY	WEDNESDAY	THURSDAY	FRIDAY	SATURDAY	SUNDAY
DAM NYCA							1
DAM NON-NYCA							446,180
DAM WHEELS							37,311
DAM VIRTUAL							7,605
BALANCING NYCA							34,356
BALANCING NON-NYCA							(95,466)
BALANCING WHEELS							8,404
BALANCING VIRTUAL							(5,305)
UFE/LOSSES							(34,356)
							97,093
	2	3	4	5	6	7	8
DAM NYCA	463,762	452,800	452,407	452,952	423,529	398,865	370,245
DAM NON-NYCA	28,097	27,821	28,357	41,014	35,613	31,996	41,168
DAM WHEELS	654	1,174	1,332	2,786	3,060	6,865	4,470
DAM VIRTUAL	33,336	30,916	27,351	26,947	29,768	26,372	20,415
BALANCING NYCA	(109,244)	(99,095)	(106,467)	(103,584)	(59,431)	(47,581)	(67,907)
BALANCING NON-NYCA	19,455	11,329	22,025	7,573	9,919	9,511	14,680
BALANCING WHEELS	(454)	(1,174)	(1,332)	(2,786)	(2,256)	(4,100)	(3,231)
BALANCING VIRTUAL	(33,336)	(30,916)	(27,351)	(26,947)	(29,768)	(26,372)	(20,415)
UFE/LOSSES	100,465	89,117	97,139	94,212	71,786	56,767	74,628
	9	10	11	12	13	14	15
DAM NYCA	405,783	405,350	406,148	408,863	401,001	379,606	378,772
DAM NON-NYCA	41,322	42,249	41,413	34,401	33,422	33,632	36,081
DAM WHEELS	3,274	4,004	6,343	4,214	1,403	3,099	6,744
DAM VIRTUAL	30,391	33,350	28,863	27,228	32,250	25,239	23,595
BALANCING NYCA	(86,927)	(77,273)	(66,550)	(62,928)	(76,537)	(66,089)	(61,414)
BALANCING NON-NYCA	19,141	14,428	7,376	11,992	25,694	17,716	3,878
BALANCING WHEELS	(2,074)	(2,504)	(4,161)	(2,639)	(203)	(2,059)	(5,394)
BALANCING VIRTUAL	(30,391)	(33,350)	(28,863)	(27,228)	(32,250)	(25,239)	(23,595)
UFE/LOSSES	85,625	82,174	72,289	75,478	88,233	76,018	63,455
	16	17	18	19	20	21	22
DAM NYCA	415,988	412,363	405,522	403,985	395,119	373,295	374,397
DAM NON-NYCA	36,168	36,866	33,659	33,722	35,338	37,291	33,722
DAM WHEELS	7,214	3,642	7,721	7,952	3,669	7,880	7,227
DAM VIRTUAL	28,635	25,826	25,675	27,638	34,568	22,150	19,879
BALANCING NYCA	(66,691)	(74,747)	(68,576)	(65,561)	(86,260)	(67,989)	(60,154)
BALANCING NON-NYCA	7,169	19,079	6,705	6,451	24,586	8,147	6,860
BALANCING WHEELS	(5,529)	(2,424)	(6,771)	(6,852)	(3,161)	(7,458)	(6,579)
BALANCING VIRTUAL	(28,635)	(25,826)	(25,675)	(27,638)	(34,568)	(22,150)	(19,879)
UFE/LOSSES	69,441	84,632	66,419	68,588	86,816	66,033	65,380
	23	24	25	26	27	28	29
DAM NYCA	406,650	396,131	395,993	386,042	381,316	352,990	346,504
DAM NON-NYCA	33,460	39,568	36,599	40,795	36,715	37,079	42,671
DAM WHEELS	8,213	7,266	3,838	6,715	7,505	6,202	4,637
DAM VIRTUAL	25,443	22,630	27,950	20,168	20,290	17,992	18,137
BALANCING NYCA	(60,446)	(63,051)	(65,164)	(78,045)	(78,925)	(50,221)	(59,381)
BALANCING NON-NYCA	15,435	4,869	8,747	11,051	4,056	7,717	14,031
BALANCING WHEELS	(5,713)	(5,588)	(2,088)	(5,220)	(6,603)	(5,602)	(3,872)
BALANCING VIRTUAL	(25,443)	(22,630)	(27,950)	(20,168)	(20,290)	(17,992)	(18,137)
UFE/LOSSES	77,123	65,716	70,973	74,701	64,277	71,786	84,012
	30	31					
DAM NYCA	368,886	377,338					
DAM NON-NYCA	43,075	39,497					
DAM WHEELS	7,689	5,700					
DAM VIRTUAL	18,713	22,302					
BALANCING NYCA	(59,100)	(56,461)					
BALANCING NON-NYCA	7,296	2,474					
BALANCING WHEELS	(5,614)	(3,535)					
BALANCING VIRTUAL	(18,713)	(22,302)					
UFE/LOSSES	78,057	66,404					



SETTLEMENTS REPORT
 March 2020 Settlement Adjustment
 August 7, 2020

Initial Settlement – Market Residuals Analysis

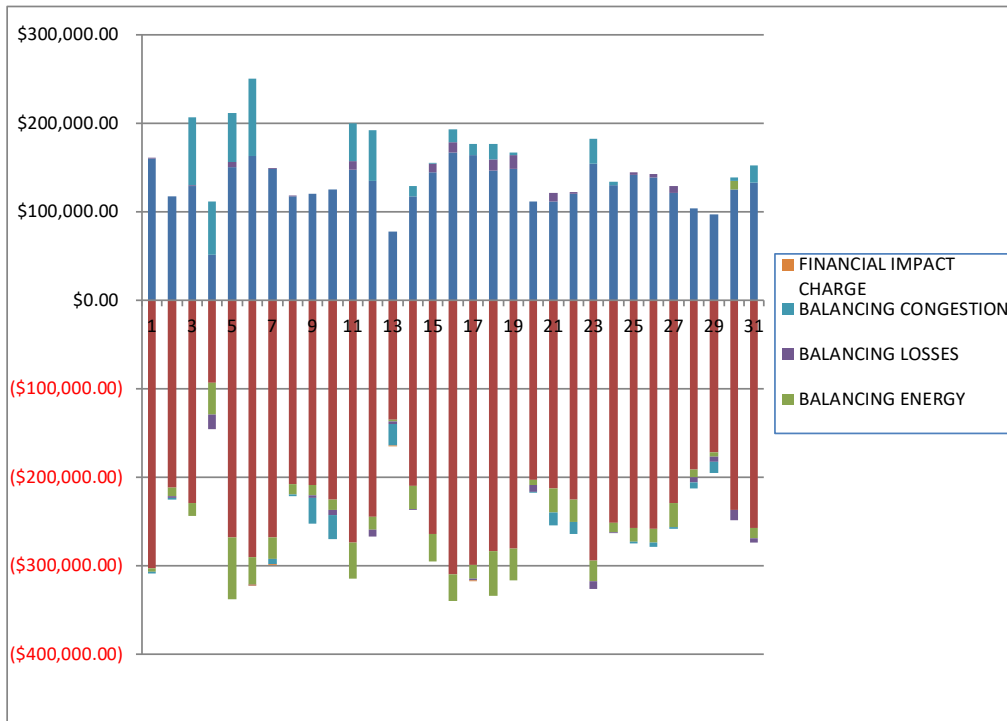
	MONDAY	TUESDAY	WEDNESDAY	THURSDAY	FRIDAY	SATURDAY	SUNDAY
							1
DAM ENERGY							\$160,456.10
DAM LOSSES							(\$302,688.61)
BALANCING ENERGY							(\$4,234.74)
BALANCING LOSSES							\$516.88
BALANCING CONGESTION							(\$2,162.36)
FINANCIAL IMPACT CHARGE							\$0.00
							2
DAM ENERGY	\$117,242.72	\$128,732.31	\$51,026.46	\$150,090.05	\$162,693.52	\$147,856.06	\$117,223.01
DAM LOSSES	(\$211,893.73)	(\$229,028.10)	(\$93,537.61)	(\$268,448.01)	(\$290,708.40)	(\$268,140.54)	(\$207,914.29)
BALANCING ENERGY	(\$9,255.13)	(\$15,098.18)	(\$36,180.65)	(\$69,802.94)	(\$20,731.35)	(\$24,699.91)	(\$12,077.22)
BALANCING LOSSES	(\$2,280.65)	\$869.27	(\$15,818.14)	\$5,688.80	(\$330.78)	\$980.41	\$195.50
BALANCING CONGESTION	(\$1,444.56)	\$77,331.64	\$60,124.30	\$55,941.13	\$93,415.76	(\$5,237.60)	(\$2,890.17)
FINANCIAL IMPACT CHARGE	\$0.00	\$0.00	\$0.00	\$0.00	(\$0.25)	(\$93.79)	\$0.00
							3
DAM ENERGY	\$119,753.21	\$124,731.64	\$147,826.89	\$134,396.41	\$77,863.09	\$117,462.41	\$144,135.03
DAM LOSSES	(\$208,602.82)	(\$225,058.16)	(\$273,606.16)	(\$244,492.10)	(\$135,085.47)	(\$209,729.32)	(\$264,257.54)
BALANCING ENERGY	(\$12,094.59)	(\$12,562.72)	(\$43,542.47)	(\$14,890.57)	(\$1,630.88)	(\$27,939.79)	(\$35,153.63)
BALANCING LOSSES	(\$2,910.91)	(\$5,218.68)	\$9,239.63	(\$7,717.69)	(\$3,554.53)	(\$647.23)	\$9,190.31
BALANCING CONGESTION	(\$30,084.37)	(\$28,225.22)	\$42,666.00	\$60,376.92	(\$23,299.58)	\$11,477.36	\$103.33
FINANCIAL IMPACT CHARGE	\$0.00	\$0.00	\$0.00	\$0.00	(\$2.32)	\$0.00	\$0.00
							4
DAM ENERGY	\$166,697.73	\$163,764.59	\$146,588.73	\$148,752.08	\$111,214.18	\$111,930.25	\$120,031.55
DAM LOSSES	(\$310,043.28)	(\$299,049.72)	(\$284,016.74)	(\$280,510.87)	(\$202,834.03)	(\$212,379.19)	(\$225,536.61)
BALANCING ENERGY	(\$30,762.29)	(\$17,294.43)	(\$50,784.32)	(\$39,033.49)	(\$10,868.05)	(\$30,516.14)	(\$35,760.60)
BALANCING LOSSES	\$11,440.34	(\$2,893.57)	\$12,172.72	\$14,762.63	(\$8,015.90)	\$8,640.57	\$1,431.93
BALANCING CONGESTION	\$13,920.13	\$13,794.72	\$16,339.06	\$2,990.39	(\$183.89)	(\$13,618.72)	(\$13,631.73)
FINANCIAL IMPACT CHARGE	\$0.00	(\$9.97)	\$0.00	\$0.00	\$0.00	\$0.00	\$0.00
							5
DAM ENERGY	\$153,932.07	\$130,273.51	\$141,458.20	\$138,376.79	\$121,103.71	\$103,729.11	\$96,554.38
DAM LOSSES	(\$294,663.49)	(\$251,511.77)	(\$257,672.45)	(\$257,918.37)	(\$228,829.52)	(\$191,170.25)	(\$172,176.09)
BALANCING ENERGY	(\$31,922.80)	(\$10,453.07)	(\$15,912.86)	(\$23,854.80)	(\$27,912.50)	(\$9,381.79)	(\$5,003.78)
BALANCING LOSSES	(\$9,687.72)	(\$636.00)	\$2,189.00	\$2,799.83	\$7,062.60	(\$7,091.76)	(\$6,041.61)
BALANCING CONGESTION	\$28,796.14	\$3,587.79	(\$1,456.93)	(\$4,630.81)	(\$1,447.19)	(\$6,352.20)	(\$12,051.57)
FINANCIAL IMPACT CHARGE	\$0.00	\$0.00	\$0.00	\$0.00	\$0.00	\$0.00	\$0.00
							6
DAM ENERGY	\$125,278.50	\$132,730.22					
DAM LOSSES	(\$236,705.64)	(\$256,913.42)					
BALANCING ENERGY	\$8,802.78	(\$12,728.33)					
BALANCING LOSSES	(\$12,379.56)	(\$4,542.80)					
BALANCING CONGESTION	\$4,469.36	\$19,017.62					
FINANCIAL IMPACT CHARGE	\$0.00	\$0.00					



SETTLEMENTS REPORT
 March 2020 Settlement Adjustment
 August 7, 2020

4-Month Settlement Adjustment – Market Residuals Analysis

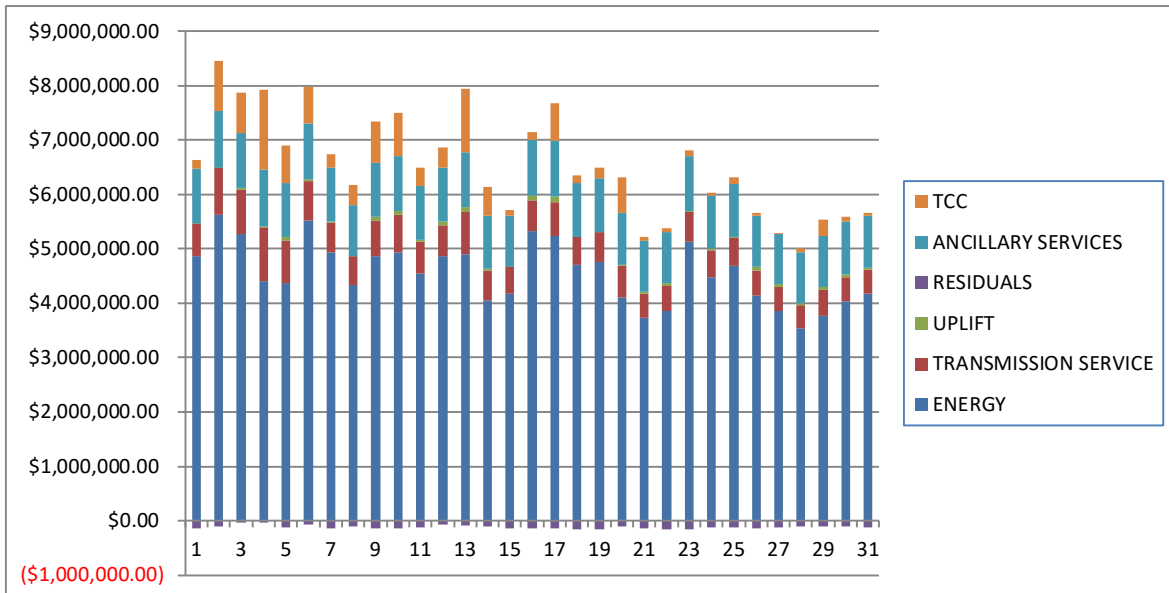
	MONDAY	TUESDAY	WEDNESDAY	THURSDAY	FRIDAY	SATURDAY	SUNDAY
							1
DAM ENERGY							\$160,456.10
DAM LOSSES							(\$302,688.61)
BALANCING ENERGY							(\$3,737.07)
BALANCING LOSSES							\$783.36
BALANCING CONGESTION							(\$2,233.94)
FINANCIAL IMPACT CHARGE							\$0.00
	2	3	4	5	6	7	8
DAM ENERGY	\$117,242.72	\$128,732.30	\$51,026.46	\$150,090.04	\$162,693.52	\$147,856.06	\$117,223.01
DAM LOSSES	(\$211,893.73)	(\$229,028.10)	(\$93,537.61)	(\$268,448.00)	(\$290,708.40)	(\$268,140.54)	(\$207,914.30)
BALANCING ENERGY	(\$9,336.88)	(\$14,864.66)	(\$36,136.44)	(\$69,348.15)	(\$30,420.52)	(\$24,470.02)	(\$11,768.83)
BALANCING LOSSES	(\$2,189.94)	\$1,015.40	(\$15,632.89)	\$6,048.03	(\$242.24)	\$1,277.72	\$376.78
BALANCING CONGESTION	(\$1,793.00)	\$77,099.91	\$60,063.24	\$55,579.37	\$87,186.29	(\$5,240.72)	(\$1,854.47)
FINANCIAL IMPACT CHARGE	\$0.00	\$0.00	\$0.00	\$0.00	(\$0.24)	(\$93.77)	\$0.00
	9	10	11	12	13	14	15
DAM ENERGY	\$119,753.22	\$124,731.64	\$147,826.89	\$134,396.41	\$77,863.09	\$117,462.41	\$144,135.03
DAM LOSSES	(\$208,602.82)	(\$225,058.16)	(\$273,606.16)	(\$244,492.09)	(\$135,085.46)	(\$209,729.33)	(\$264,257.55)
BALANCING ENERGY	(\$11,995.41)	(\$12,415.48)	(\$40,655.57)	(\$14,876.92)	(\$1,653.16)	(\$26,605.28)	(\$31,276.06)
BALANCING LOSSES	(\$2,676.67)	(\$4,985.49)	\$9,539.15	(\$7,721.90)	(\$3,442.17)	(\$394.59)	\$9,683.29
BALANCING CONGESTION	(\$28,811.52)	(\$27,214.27)	\$42,316.72	\$57,249.19	(\$23,704.62)	\$11,795.50	\$102.66
FINANCIAL IMPACT CHARGE	\$0.00	\$0.00	\$0.00	\$0.00	(\$2.37)	\$0.00	\$0.00
	16	17	18	19	20	21	22
DAM ENERGY	\$166,697.74	\$163,764.59	\$146,588.73	\$148,752.09	\$111,214.18	\$111,930.26	\$120,031.54
DAM LOSSES	(\$310,043.27)	(\$299,049.72)	(\$284,016.74)	(\$280,510.87)	(\$202,834.02)	(\$212,379.20)	(\$225,536.60)
BALANCING ENERGY	(\$30,075.63)	(\$15,631.47)	(\$50,224.31)	(\$35,730.30)	(\$6,445.69)	(\$27,995.80)	(\$24,807.55)
BALANCING LOSSES	\$11,892.36	(\$2,304.64)	\$12,766.44	\$14,941.22	(\$7,554.07)	\$8,911.63	\$2,127.93
BALANCING CONGESTION	\$13,934.18	\$13,138.44	\$16,870.52	\$2,990.37	(\$14.15)	(\$13,737.82)	(\$13,742.51)
FINANCIAL IMPACT CHARGE	\$0.00	(\$9.90)	\$0.00	\$0.00	\$0.00	\$0.00	\$0.00
	23	24	25	26	27	28	29
DAM ENERGY	\$153,932.07	\$130,273.51	\$141,458.19	\$138,376.78	\$121,103.70	\$103,729.11	\$96,554.38
DAM LOSSES	(\$294,663.48)	(\$251,511.77)	(\$257,672.45)	(\$257,918.36)	(\$228,829.51)	(\$191,170.26)	(\$172,176.09)
BALANCING ENERGY	(\$22,944.70)	(\$10,379.92)	(\$15,435.83)	(\$16,087.13)	(\$27,779.21)	(\$8,643.33)	(\$4,830.92)
BALANCING LOSSES	(\$8,682.57)	(\$301.11)	\$2,550.81	\$3,658.45	\$7,424.52	(\$6,570.43)	(\$5,846.02)
BALANCING CONGESTION	\$28,739.94	\$3,331.10	(\$1,456.92)	(\$4,557.74)	(\$1,444.93)	(\$6,158.33)	(\$12,677.49)
FINANCIAL IMPACT CHARGE	\$0.00	\$0.00	\$0.00	\$0.00	\$0.00	\$0.00	\$0.00
	30	31					
DAM ENERGY	\$125,278.51	\$132,730.22					
DAM LOSSES	(\$236,705.64)	(\$256,913.42)					
BALANCING ENERGY	\$9,351.80	(\$12,600.87)					
BALANCING LOSSES	(\$12,054.47)	(\$4,294.90)					
BALANCING CONGESTION	\$4,356.40	\$19,006.62					
FINANCIAL IMPACT CHARGE	\$0.00	\$0.00					



SETTLEMENTS REPORT
 March 2020 Settlement Adjustment
 August 7, 2020

Initial Settlement – Market Costs Analysis

	MONDAY	TUESDAY	WEDNESDAY	THURSDAY	FRIDAY	SATURDAY	SUNDAY
ENERGY							1
TRANSMISSION SERVICE							\$4,861,024.40
UPLIFT							\$614,478.65
RESIDUALS							\$32.87
ANCILLARY SERVICES							(\$148,112.73)
TCC							\$1,003,349.62
	2	3	4	5	6	7	8
ENERGY	\$5,620,720.92	\$5,275,926.66	\$4,404,721.78	\$4,365,388.13	\$5,515,978.08	\$4,935,797.04	\$4,334,677.34
TRANSMISSION SERVICE	\$869,018.69	\$815,410.48	\$999,028.19	\$783,628.76	\$732,962.85	\$543,071.59	\$536,148.24
UPLIFT	\$8,512.80	\$33,028.29	\$3,571.08	\$75,524.17	\$37,350.52	\$32,145.93	\$2,066.49
RESIDUALS	(\$107,631.40)	(\$37,193.06)	(\$34,385.64)	(\$126,530.97)	(\$63,661.50)	(\$149,335.37)	(\$105,463.17)
ANCILLARY SERVICES	\$1,047,346.69	\$998,902.83	\$1,049,701.87	\$987,872.08	\$1,022,012.95	\$984,634.58	\$928,870.57
TCC	\$909,914.23	\$758,482.85	\$1,469,440.17	\$688,690.44	\$676,128.60	\$253,595.47	\$375,999.97
	9	10	11	12	13	14	15
ENERGY	\$4,862,832.66	\$4,943,741.22	\$4,555,290.55	\$4,860,658.11	\$4,894,106.12	\$4,048,366.29	\$4,169,982.82
TRANSMISSION SERVICE	\$652,635.11	\$676,481.57	\$574,985.66	\$571,750.26	\$782,354.15	\$560,718.96	\$498,631.57
UPLIFT	\$82,446.46	\$82,783.64	\$38,117.50	\$63,334.96	\$92,486.50	\$34,799.50	\$634.19
RESIDUALS	(\$133,939.48)	(\$146,333.14)	(\$117,416.11)	(\$72,327.03)	(\$85,709.69)	(\$109,376.57)	(\$145,982.50)
ANCILLARY SERVICES	\$988,593.47	\$1,001,779.40	\$982,245.81	\$1,006,968.32	\$1,015,692.32	\$964,063.63	\$937,677.12
TCC	\$748,309.89	\$789,971.99	\$348,682.15	\$354,236.45	\$1,152,559.56	\$530,205.90	\$112,360.01
	16	17	18	19	20	21	22
ENERGY	\$5,329,368.30	\$5,231,956.25	\$4,708,979.23	\$4,761,200.89	\$4,099,697.74	\$3,734,219.14	\$3,856,946.88
TRANSMISSION SERVICE	\$563,183.53	\$622,517.79	\$504,169.61	\$549,907.83	\$589,464.17	\$450,830.11	\$463,585.99
UPLIFT	\$96,483.99	\$116,572.26	\$5,284.68	\$2,005.38	\$13,779.23	\$28,620.33	\$48,354.35
RESIDUALS	(\$148,747.37)	(\$141,688.38)	(\$159,700.55)	(\$153,039.26)	(\$110,687.69)	(\$135,943.23)	(\$153,465.46)
ANCILLARY SERVICES	\$1,014,625.25	\$1,020,209.21	\$986,255.91	\$980,457.68	\$963,456.98	\$929,122.68	\$941,724.74
TCC	\$149,751.54	\$688,649.08	\$154,885.28	\$207,519.12	\$644,315.16	\$74,265.48	\$61,682.26
	23	24	25	26	27	28	29
ENERGY	\$5,134,195.91	\$4,485,165.68	\$4,682,798.97	\$4,149,441.46	\$3,866,146.43	\$3,532,372.77	\$3,776,409.28
TRANSMISSION SERVICE	\$546,003.76	\$478,537.88	\$511,955.12	\$460,159.70	\$439,970.07	\$429,502.28	\$476,691.77
UPLIFT	\$12,478.62	\$39,867.92	\$31,850.81	\$67,434.09	\$42,157.29	\$43,247.17	\$49,330.86
RESIDUALS	(\$153,545.80)	(\$128,739.54)	(\$131,395.04)	(\$145,227.36)	(\$130,022.90)	(\$110,266.89)	(\$98,718.67)
ANCILLARY SERVICES	\$1,014,352.72	\$974,585.04	\$970,328.25	\$940,313.58	\$920,953.29	\$923,348.27	\$937,650.85
TCC	\$101,699.66	\$50,088.30	\$112,297.43	\$52,221.79	\$28,929.61	\$81,272.13	\$294,783.88
	30	31					
ENERGY	\$4,028,709.81	\$4,174,197.35					
TRANSMISSION SERVICE	\$452,447.99	\$449,456.26					
UPLIFT	\$51,279.11	\$30,022.65					
RESIDUALS	(\$110,534.56)	(\$122,436.71)					
ANCILLARY SERVICES	\$965,004.78	\$962,227.63					
TCC	\$94,136.61	\$44,938.05					



SETTLEMENTS REPORT
 March 2020 Settlement Adjustment
 August 7, 2020

4-Month Settlement Adjustment – Market Costs Analysis

	MONDAY	TUESDAY	WEDNESDAY	THURSDAY	FRIDAY	SATURDAY	SUNDAY	
ENERGY								1
TRANSMISSION SERVICE								\$4,855,760.76
UPLIFT								\$613,654.23
RESIDUALS								\$33.25
ANCILLARY SERVICES								(\$147,420.16)
TCC								\$1,002,069.75
								\$151,468.67
	2	3	4	5	6	7	8	
ENERGY	\$5,619,250.14	\$5,272,535.41	\$4,400,967.36	\$4,359,269.88	\$5,519,317.75	\$4,931,684.43	\$4,330,943.08	
TRANSMISSION SERVICE	\$868,263.39	\$814,608.69	\$997,878.60	\$782,369.64	\$732,077.19	\$542,067.82	\$535,234.78	
UPLIFT	\$8,511.62	\$33,028.29	\$3,571.22	\$75,982.47	\$37,350.75	\$32,146.04	\$2,067.26	
RESIDUALS	(\$107,970.83)	(\$37,045.15)	(\$34,237.24)	(\$126,078.71)	(\$71,491.59)	(\$148,811.27)	(\$103,937.81)	
ANCILLARY SERVICES	\$1,045,683.23	\$997,458.07	\$1,047,354.48	\$986,368.92	\$1,020,337.00	\$983,205.72	\$927,490.78	
TCC	\$910,510.06	\$758,767.49	\$1,470,186.15	\$688,575.51	\$676,182.39	\$253,707.64	\$376,137.73	
	9	10	11	12	13	14	15	
ENERGY	\$4,857,491.61	\$4,939,112.37	\$4,550,801.68	\$4,859,877.04	\$4,893,414.13	\$4,056,518.83	\$4,165,351.91	
TRANSMISSION SERVICE	\$651,698.80	\$675,606.70	\$573,840.79	\$570,823.24	\$781,463.88	\$560,012.61	\$497,092.82	
UPLIFT	\$82,446.37	\$82,781.84	\$38,105.43	\$64,055.05	\$92,486.86	\$34,817.87	\$636.52	
RESIDUALS	(\$132,333.20)	(\$144,941.76)	(\$114,578.97)	(\$75,445.31)	(\$86,024.69)	(\$107,471.29)	(\$141,612.63)	
ANCILLARY SERVICES	\$986,660.92	\$999,283.57	\$980,145.68	\$1,005,546.82	\$1,014,393.72	\$963,140.49	\$935,541.70	
TCC	\$748,925.10	\$791,236.70	\$349,328.92	\$354,371.21	\$1,152,620.43	\$530,456.73	\$112,380.98	
	16	17	18	19	20	21	22	
ENERGY	\$5,321,751.77	\$5,226,629.06	\$4,696,603.73	\$4,764,816.14	\$4,097,607.27	\$3,732,092.12	\$3,858,834.00	
TRANSMISSION SERVICE	\$561,329.19	\$620,940.80	\$502,087.02	\$548,711.58	\$587,771.53	\$448,933.73	\$461,884.24	
UPLIFT	\$98,102.77	\$116,571.69	\$5,284.31	\$2,010.17	\$13,777.33	\$28,622.62	\$48,355.85	
RESIDUALS	(\$147,594.62)	(\$140,092.70)	(\$158,015.36)	(\$149,557.49)	(\$105,633.75)	(\$133,270.93)	(\$141,927.19)	
ANCILLARY SERVICES	\$1,012,119.02	\$1,017,515.69	\$983,283.38	\$978,874.79	\$960,496.51	\$926,547.30	\$939,174.84	
TCC	\$149,777.28	\$689,186.05	\$155,026.79	\$207,537.51	\$644,899.98	\$74,270.19	\$61,681.84	
	23	24	25	26	27	28	29	
ENERGY	\$5,127,093.99	\$4,477,801.46	\$4,675,460.68	\$4,144,161.46	\$3,857,792.31	\$3,524,264.45	\$3,774,910.81	
TRANSMISSION SERVICE	\$544,211.36	\$476,830.39	\$510,006.80	\$458,088.45	\$437,953.78	\$427,653.82	\$474,760.81	
UPLIFT	\$12,474.29	\$39,856.35	\$31,849.68	\$67,489.83	\$42,155.96	\$46,883.88	\$49,330.87	
RESIDUALS	(\$143,618.74)	(\$128,588.19)	(\$130,556.20)	(\$136,528.00)	(\$129,525.43)	(\$108,813.24)	(\$98,976.14)	
ANCILLARY SERVICES	\$1,011,900.40	\$972,202.21	\$967,596.37	\$937,427.53	\$918,139.57	\$920,811.14	\$934,890.78	
TCC	\$101,705.09	\$50,088.30	\$112,297.43	\$52,233.22	\$28,929.61	\$81,291.78	\$294,891.85	
	30	31						
ENERGY	\$4,023,494.35	\$4,169,635.49						
TRANSMISSION SERVICE	\$450,469.35	\$447,559.63						
UPLIFT	\$51,280.08	\$30,023.30						
RESIDUALS	(\$109,773.40)	(\$122,072.35)						
ANCILLARY SERVICES	\$962,214.41	\$959,637.28						
TCC	\$94,176.39	\$44,938.05						

