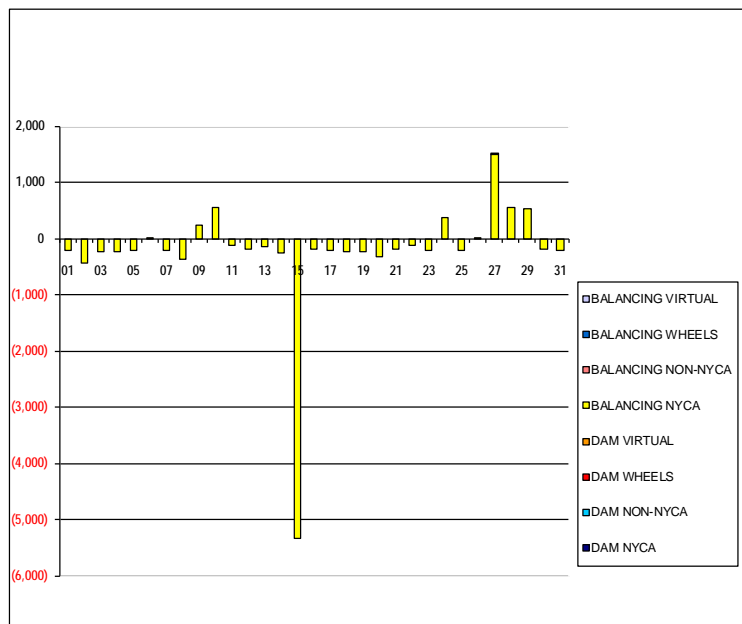


SETTLEMENTS REPORT
 July 2020 Settlement Adjustment
 December 7, 2020

Settlement Adjustment – Market Supply Delta Analysis

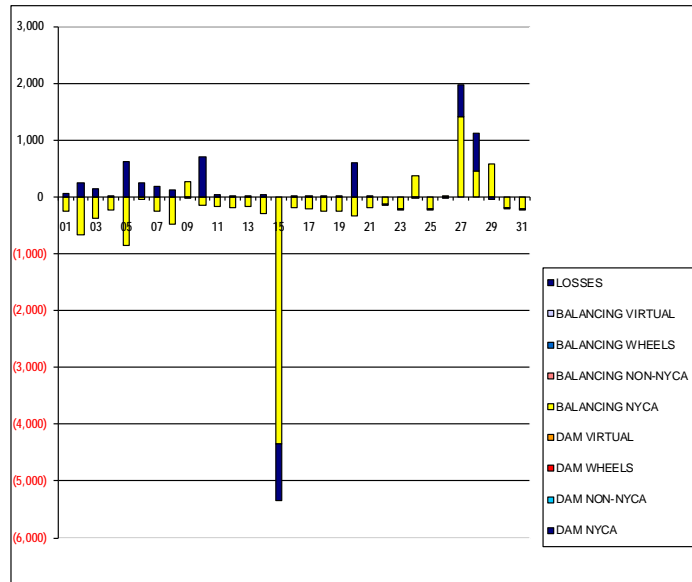
	MONDAY	TUESDAY	WEDNESDAY	THURSDAY	FRIDAY	SATURDAY	SUNDAY
			1	2	3	4	5
DAM NYCA			0	0	0	0	0
DAM NON-NYCA			0	0	0	0	0
DAM WHEELS			0	0	0	0	0
DAM VIRTUAL			0	0	0	0	0
BALANCING NYCA			(203)	(432)	(237)	(225)	(223)
BALANCING NON-NYCA			0	0	0	0	0
BALANCING WHEELS			0	0	0	0	0
BALANCING VIRTUAL			0	0	0	0	0
	6	7	8	9	10	11	12
DAM NYCA	0	0	0	0	0	0	0
DAM NON-NYCA	0	0	0	0	0	0	0
DAM WHEELS	0	0	0	0	0	0	0
DAM VIRTUAL	0	0	0	0	0	0	0
BALANCING NYCA	7	(207)	(369)	228	544	(120)	(186)
BALANCING NON-NYCA	0	0	0	0	0	0	0
BALANCING WHEELS	0	0	0	0	0	0	0
BALANCING VIRTUAL	0	0	0	0	0	0	0
	13	14	15	16	17	18	19
DAM NYCA	0	0	0	0	0	0	0
DAM NON-NYCA	0	0	0	0	0	0	0
DAM WHEELS	0	0	0	0	0	0	0
DAM VIRTUAL	0	0	0	0	0	0	0
BALANCING NYCA	(156)	(257)	(5,338)	(187)	(209)	(246)	(231)
BALANCING NON-NYCA	0	0	0	0	0	0	0
BALANCING WHEELS	0	0	0	0	0	0	0
BALANCING VIRTUAL	0	0	0	0	0	0	0
	20	21	22	23	24	25	26
DAM NYCA	0	0	0	0	0	0	0
DAM NON-NYCA	0	0	0	0	0	0	0
DAM WHEELS	0	0	0	0	0	0	0
DAM VIRTUAL	0	0	0	0	0	0	0
BALANCING NYCA	(320)	(191)	(122)	(202)	363	(204)	14
BALANCING NON-NYCA	0	0	0	0	0	0	0
BALANCING WHEELS	0	0	0	0	0	0	0
BALANCING VIRTUAL	0	0	0	0	0	0	0
	27	28	29	30	31		
DAM NYCA	0	0	0	0	0		
DAM NON-NYCA	0	0	0	0	0		
DAM WHEELS	0	0	0	0	0		
DAM VIRTUAL	0	0	0	0	0		
BALANCING NYCA	1,497	555	530	(199)	(220)		
BALANCING NON-NYCA	2	0	0	0	0		
BALANCING WHEELS	0	0	0	0	0		
BALANCING VIRTUAL	0	0	0	0	0		



SETTLEMENTS REPORT
 July 2020 Settlement Adjustment
 December 7, 2020

Settlement Adjustment – Market Withdrawals Delta Analysis

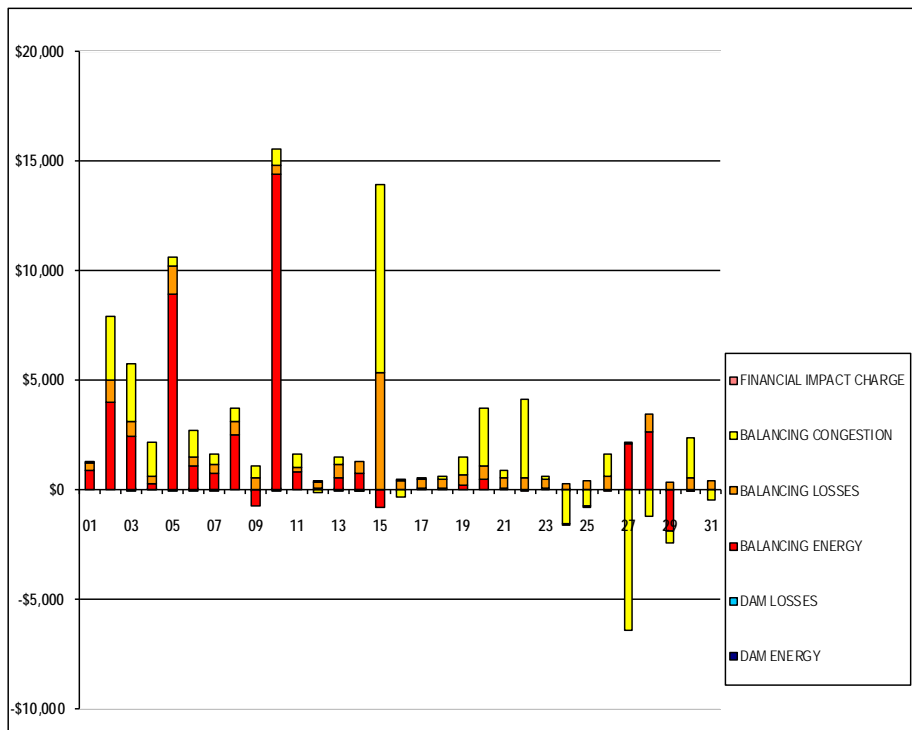
	MONDAY	TUESDAY	WEDNESDAY	THURSDAY	FRIDAY	SATURDAY	SUNDAY
			1	2	3	4	5
DAM NYCA			0	0	0	0	0
DAM NON-NYCA			0	0	0	0	0
DAM WHEELS			0	0	0	0	0
DAM VIRTUAL			0	0	0	0	0
BALANCING NYCA			(257)	(671)	(375)	(237)	(853)
BALANCING NON-NYCA			0	0	0	0	0
BALANCING WHEELS			0	0	0	0	0
BALANCING VIRTUAL			0	0	0	0	0
UFE/LOSSES			54	238	138	11	630
	6	7	8	9	10	11	12
DAM NYCA	0	0	0	0	0	0	0
DAM NON-NYCA	0	0	0	0	0	0	0
DAM WHEELS	0	0	0	0	0	0	0
DAM VIRTUAL	0	0	0	0	0	0	0
BALANCING NYCA	(55)	(246)	(485)	261	(156)	(162)	(190)
BALANCING NON-NYCA	0	0	0	0	0	0	0
BALANCING WHEELS	0	0	0	0	0	0	0
BALANCING VIRTUAL	0	0	0	0	0	0	0
UFE/LOSSES	250	186	116	(34)	699	42	4
	13	14	15	16	17	18	19
DAM NYCA	0	0	0	0	0	0	0
DAM NON-NYCA	0	0	0	0	0	0	0
DAM WHEELS	0	0	0	0	0	0	0
DAM VIRTUAL	0	0	0	0	0	0	0
BALANCING NYCA	(172)	(296)	(4,354)	(187)	(209)	(248)	(244)
BALANCING NON-NYCA	0	0	0	0	0	0	0
BALANCING WHEELS	0	0	0	0	0	0	0
BALANCING VIRTUAL	0	0	0	0	0	0	0
UFE/LOSSES	15	39	(984)	0	0	2	14
	20	21	22	23	24	25	26
DAM NYCA	0	0	0	0	0	0	0
DAM NON-NYCA	0	0	0	0	0	0	0
DAM WHEELS	0	0	0	0	0	0	0
DAM VIRTUAL	0	0	0	0	0	0	0
BALANCING NYCA	(342)	(194)	(121)	(201)	364	(204)	14
BALANCING NON-NYCA	0	0	0	0	0	0	0
BALANCING WHEELS	0	0	0	0	0	0	0
BALANCING VIRTUAL	0	0	0	0	0	0	0
UFE/LOSSES	606	2	(1)	(1)	(1)	(0)	(0)
	27	28	29	30	31		
DAM NYCA	0	0	0	0	0		
DAM NON-NYCA	0	0	0	0	0		
DAM WHEELS	0	0	0	0	0		
DAM VIRTUAL	0	0	0	0	0		
BALANCING NYCA	1,418	455	578	(198)	(218)		
BALANCING NON-NYCA	0	0	0	0	0		
BALANCING WHEELS	0	0	0	0	0		
BALANCING VIRTUAL	0	0	0	0	0		
UFE/LOSSES	562	659	(48)	(0)	(2)		



SETTLEMENTS REPORT
 July 2020 Settlement Adjustment
 December 7, 2020

Settlement Adjustment – Market Residuals Delta Analysis

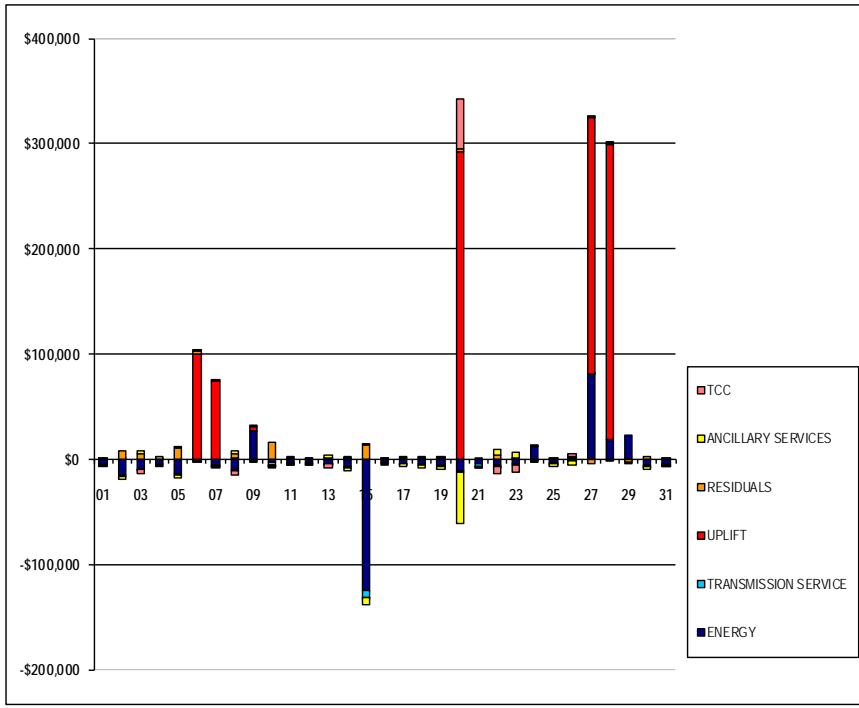
	MONDAY	TUESDAY	WEDNESDAY	THURSDAY	FRIDAY	SATURDAY	SUNDAY
			1	2	3	4	5
DAM ENERGY			\$0.00	\$0.00	\$0.01	\$0.01	\$0.00
DAM LOSSES			\$0.00	\$0.00	(\$0.01)	\$0.00	(\$0.01)
BALANCING ENERGY			\$878.21	\$3,955.86	\$2,428.35	\$202.87	\$8,878.10
BALANCING LOSSES			\$332.75	\$1,026.77	\$642.71	\$363.67	\$1,283.29
BALANCING CONGESTION			\$27.30	\$2,890.90	\$2,635.44	\$1,547.36	\$446.47
FINANCIAL IMPACT CHARGE			\$0.00	\$0.00	\$0.00	\$0.00	\$0.00
	6	7	8	9	10	11	12
DAM ENERGY	\$0.01	\$0.00	\$0.00	(\$0.01)	(\$0.01)	\$0.00	\$0.00
DAM LOSSES	(\$0.01)	\$0.00	\$0.00	\$0.00	\$0.01	\$0.00	\$0.00
BALANCING ENERGY	\$1,058.14	\$688.13	\$2,458.80	(\$798.30)	\$14,352.41	\$757.59	\$37.53
BALANCING LOSSES	\$427.45	\$425.19	\$609.89	\$483.10	\$426.54	\$206.19	\$279.21
BALANCING CONGESTION	\$1,211.10	\$470.00	\$589.15	\$586.39	\$699.90	\$641.06	(\$144.69)
FINANCIAL IMPACT CHARGE	\$0.00	(\$0.03)	\$0.00	\$0.00	\$0.00	\$0.00	\$0.12
	13	14	15	16	17	18	19
DAM ENERGY	(\$0.01)	\$0.00	\$0.00	\$0.00	\$0.00	\$0.00	\$0.00
DAM LOSSES	\$0.01	(\$0.01)	\$0.00	\$0.00	\$0.00	\$0.00	\$0.00
BALANCING ENERGY	\$490.66	\$740.44	(\$813.88)	(\$10.83)	\$17.26	\$26.14	\$183.82
BALANCING LOSSES	\$635.44	\$525.65	\$5,316.52	\$368.28	\$427.85	\$383.75	\$487.31
BALANCING CONGESTION	\$336.71	(\$58.87)	\$8,553.96	(\$350.27)	\$32.03	\$178.08	\$762.69
FINANCIAL IMPACT CHARGE	\$0.00	\$0.00	\$0.00	\$0.13	\$0.00	\$0.00	\$0.00
	20	21	22	23	24	25	26
DAM ENERGY	\$0.00	\$0.00	\$0.00	\$0.00	\$0.01	\$0.00	\$0.00
DAM LOSSES	\$0.00	\$0.00	\$0.00	\$0.00	\$0.00	\$0.00	\$0.00
BALANCING ENERGY	\$416.43	\$38.51	(\$24.99)	\$15.51	(\$0.95)	(\$4.63)	(\$5.51)
BALANCING LOSSES	\$600.04	\$492.47	\$528.93	\$438.60	\$266.16	\$375.99	\$549.26
BALANCING CONGESTION	\$2,632.23	\$313.41	\$3,527.20	\$86.86	(\$1,597.77)	(\$795.03)	\$1,014.55
FINANCIAL IMPACT CHARGE	\$0.00	\$0.00	\$0.00	\$0.00	(\$0.01)	(\$0.05)	\$0.00
	27	28	29	30	31		
DAM ENERGY	\$0.00	\$0.00	(\$0.01)	(\$0.01)	\$0.00		
DAM LOSSES	\$0.00	\$0.00	\$0.00	\$0.00	\$0.00		
BALANCING ENERGY	\$2,048.44	\$2,584.05	(\$1,907.20)	(\$9.35)	(\$35.08)		
BALANCING LOSSES	\$45.88	\$851.73	\$296.81	\$519.98	\$380.78		
BALANCING CONGESTION	(\$6,430.16)	(\$1,248.21)	(\$557.14)	\$1,835.24	(\$471.15)		
FINANCIAL IMPACT CHARGE	\$0.00	\$0.00	\$0.00	\$0.00	\$0.00		



SETTLEMENTS REPORT
 July 2020 Settlement Adjustment
 December 7, 2020

Settlement Adjustment – Market Costs Delta Analysis

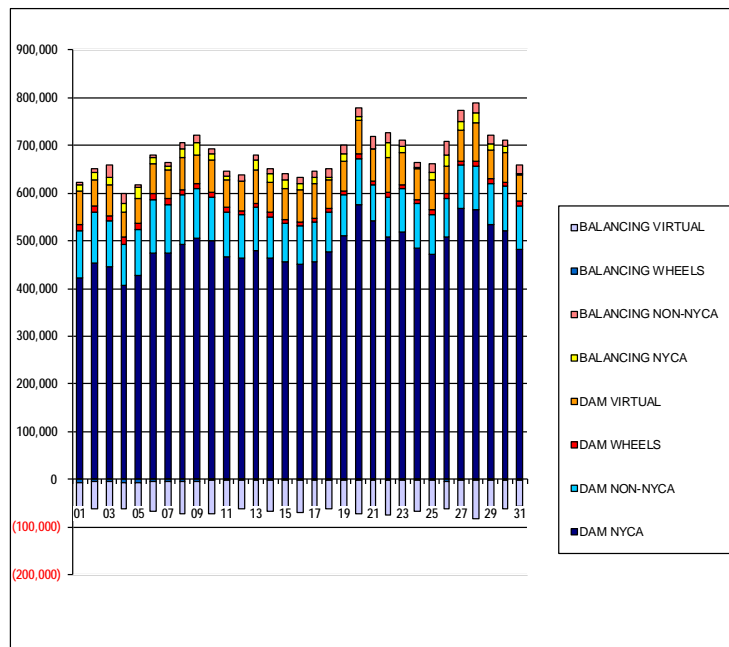
	MONDAY	TUESDAY	WEDNESDAY	THURSDAY	FRIDAY	SATURDAY	SUNDAY
			1	2	3	4	5
ENERGY			(\$4,200.06)	(\$15,244.87)	(\$9,480.54)	(\$4,275.40)	(\$14,021.54)
TRANSMISSION SERVICE			(\$838.92)	(\$1,804.89)	(\$849.51)	(\$697.39)	(\$1,511.52)
UPLIFT			\$1.51	\$0.50	\$0.01	\$227.16	\$0.00
RESIDUALS			\$1,238.26	\$7,873.53	\$5,706.50	\$2,113.91	\$10,607.85
ANCILLARY SERVICES			(\$887.16)	(\$2,058.68)	\$1,953.57	(\$742.14)	(\$1,730.27)
TCC			\$0.00	\$0.00	(\$2,886.65)	\$0.00	\$18.10
	6	7	8	9	10	11	12
ENERGY	\$420.55	(\$6,242.14)	(\$9,490.28)	\$27,473.29	(\$3,459.63)	(\$3,509.55)	(\$3,328.68)
TRANSMISSION SERVICE	(\$1,110.61)	(\$1,288.41)	(\$2,032.35)	(\$1,155.94)	(\$1,599.81)	(\$711.67)	(\$653.61)
UPLIFT	\$99,609.72	\$73,628.34	\$1,777.04	\$3,212.40	(\$0.18)	(\$0.35)	(\$0.16)
RESIDUALS	\$2,696.69	\$1,583.29	\$3,657.84	\$271.18	\$15,478.85	\$1,604.84	\$172.17
ANCILLARY SERVICES	(\$1,177.94)	(\$1,361.91)	\$1,917.08	(\$1,035.80)	(\$1,612.54)	\$795.86	(\$833.96)
TCC	\$32.70	\$0.00	(\$4,021.36)	\$0.00	(\$43.34)	(\$1,531.97)	\$145.28
	13	14	15	16	17	18	19
ENERGY	(\$4,273.67)	(\$6,659.94)	(\$124,846.86)	(\$2,938.63)	(\$4,109.70)	(\$4,471.98)	(\$5,846.23)
TRANSMISSION SERVICE	(\$649.06)	(\$1,601.90)	(\$6,355.93)	(\$680.71)	(\$637.55)	(\$1,319.70)	(\$1,711.19)
UPLIFT	(\$0.07)	\$0.14	(\$0.35)	\$1.71	(\$0.15)	(\$0.02)	\$96.75
RESIDUALS	\$1,462.81	\$1,207.21	\$13,056.60	\$7.31	\$477.14	\$587.97	\$1,433.82
ANCILLARY SERVICES	\$2,288.12	(\$2,377.14)	(\$7,356.45)	(\$889.89)	(\$2,584.71)	(\$2,138.54)	(\$1,982.61)
TCC	(\$2,959.76)	\$741.17	\$368.17	\$175.96	\$1,905.76	\$789.45	\$256.89
	20	21	22	23	24	25	26
ENERGY	(\$10,513.94)	(\$4,741.76)	(\$5,050.62)	(\$4,206.03)	\$12,472.14	(\$2,538.19)	\$591.95
TRANSMISSION SERVICE	(\$1,847.96)	(\$2,020.39)	(\$1,651.08)	(\$1,460.52)	(\$791.91)	(\$1,676.41)	(\$1,239.09)
UPLIFT	\$291,928.43	(\$1.32)	(\$3.25)	\$0.19	\$0.26	\$0.23	\$0.00
RESIDUALS	\$3,648.70	\$844.39	\$4,031.14	\$540.97	(\$1,332.56)	(\$423.72)	\$1,558.30
ANCILLARY SERVICES	(\$48,727.61)	(\$2,006.97)	\$5,323.51	\$5,680.24	(\$959.34)	(\$2,034.52)	(\$4,302.01)
TCC	\$46,661.98	\$0.00	(\$6,953.88)	(\$7,150.94)	\$307.47	\$354.56	\$3,110.71
	27	28	29	30	31		
ENERGY	\$80,364.91	\$18,433.25	\$23,369.80	(\$5,870.48)	(\$4,131.79)		
TRANSMISSION SERVICE	\$68.04	(\$862.72)	(\$698.30)	(\$1,687.62)	(\$949.63)		
UPLIFT	\$244,528.55	\$280,460.33	(\$106.26)	(\$1.38)	\$8.88		
RESIDUALS	(\$4,335.84)	\$2,187.57	(\$2,167.54)	\$2,345.86	(\$125.45)		
ANCILLARY SERVICES	\$377.05	\$341.57	(\$568.34)	(\$1,689.07)	(\$1,104.73)		
TCC	\$1.63	(\$1,205.81)	\$0.00	\$0.00	\$121.88		



SETTLEMENTS REPORT
 July 2020 Settlement Adjustment
 December 7, 2020

Initial Settlement – Market Supply Analysis

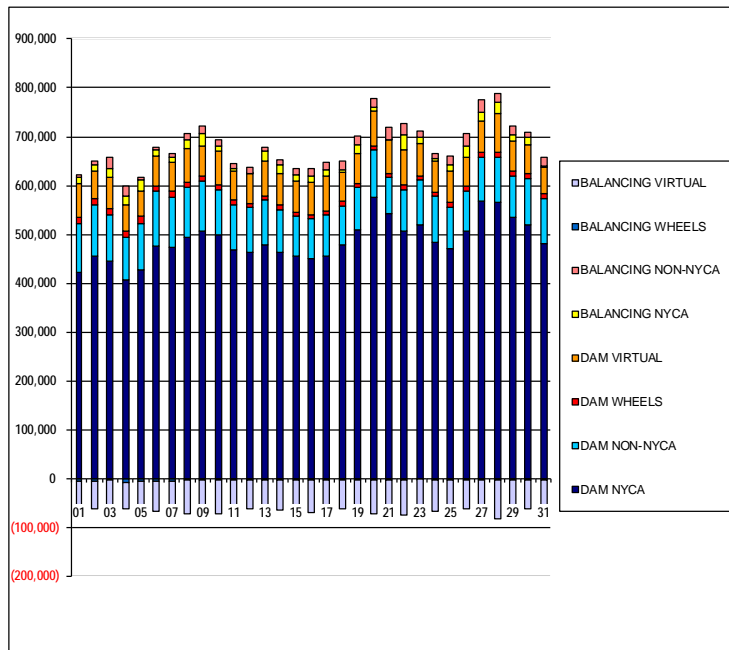
	MONDAY	TUESDAY	WEDNESDAY	THURSDAY	FRIDAY	SATURDAY	SUNDAY
			1	2	3	4	5
DAM NYCA			423,294	454,639	445,933	406,682	426,450
DAM NON-NYCA			97,894	105,533	95,027	86,678	96,879
DAM WHEELS			12,867	11,993	10,664	13,836	13,229
DAM VIRTUAL			69,348	56,214	65,039	53,680	52,177
BALANCING NYCA			14,080	14,586	17,427	18,052	23,515
BALANCING NON-NYCA			5,739	7,456	24,585	19,189	4,801
BALANCING WHEELS			(5,917)	(5,093)	(3,839)	(7,155)	(6,479)
BALANCING VIRTUAL			(69,348)	(56,214)	(65,039)	(53,680)	(52,177)
	6	7	8	9	10	11	12
DAM NYCA	475,605	474,237	492,669	506,370	499,447	467,458	464,286
DAM NON-NYCA	111,869	102,350	103,396	102,404	91,843	93,676	90,519
DAM WHEELS	12,347	11,781	10,717	11,283	9,503	10,039	9,341
DAM VIRTUAL	60,732	59,277	67,764	59,628	69,468	57,479	60,136
BALANCING NYCA	13,443	9,290	19,395	26,817	11,281	6,810	1,572
BALANCING NON-NYCA	5,109	8,021	11,992	14,675	12,751	9,876	11,346
BALANCING WHEELS	(5,445)	(4,394)	(3,343)	(3,571)	(2,283)	(2,889)	(2,341)
BALANCING VIRTUAL	(60,732)	(59,277)	(67,764)	(59,628)	(69,468)	(57,479)	(60,136)
	13	14	15	16	17	18	19
DAM NYCA	478,671	463,373	456,419	450,847	455,035	478,098	509,998
DAM NON-NYCA	91,541	87,719	80,504	80,358	83,965	81,010	86,300
DAM WHEELS	9,022	9,268	8,934	9,313	9,391	8,948	8,630
DAM VIRTUAL	70,087	63,150	63,730	65,989	71,562	59,688	61,057
BALANCING NYCA	21,461	18,250	18,039	12,968	12,950	4,596	17,364
BALANCING NON-NYCA	8,658	10,281	13,587	14,484	13,931	17,775	18,328
BALANCING WHEELS	(2,122)	(2,418)	(2,184)	(2,463)	(2,788)	(2,148)	(1,830)
BALANCING VIRTUAL	(70,087)	(63,150)	(63,730)	(65,989)	(71,562)	(59,688)	(61,057)
	20	21	22	23	24	25	26
DAM NYCA	574,993	542,983	507,660	518,850	483,988	470,583	507,578
DAM NON-NYCA	97,524	73,319	84,270	91,651	93,532	84,637	81,461
DAM WHEELS	9,381	9,489	9,567	8,200	9,778	9,512	9,791
DAM VIRTUAL	70,293	66,701	72,301	66,675	63,421	64,053	57,876
BALANCING NYCA	7,564	1,640	31,144	13,186	3,729	15,136	23,228
BALANCING NON-NYCA	18,575	25,511	21,526	12,106	10,162	17,857	27,810
BALANCING WHEELS	(2,181)	(2,518)	(2,717)	(1,200)	(2,828)	(2,712)	(3,121)
BALANCING VIRTUAL	(70,293)	(66,701)	(72,301)	(66,675)	(63,421)	(64,053)	(57,876)
	27	28	29	30	31		
DAM NYCA	567,222	565,299	534,898	520,225	481,955		
DAM NON-NYCA	91,390	92,453	85,005	94,120	91,852		
DAM WHEELS	9,586	9,289	9,549	9,711	9,008		
DAM VIRTUAL	64,606	79,590	60,890	60,174	55,018		
BALANCING NYCA	16,850	22,987	13,500	13,776	2,957		
BALANCING NON-NYCA	25,151	19,563	18,342	12,393	18,224		
BALANCING WHEELS	(2,638)	(2,089)	(2,399)	(2,555)	(1,808)		
BALANCING VIRTUAL	(64,606)	(79,590)	(60,890)	(60,174)	(55,018)		



SETTLEMENTS REPORT
 July 2020 Settlement Adjustment
 December 7, 2020

4-Month Settlement Adjustment – Market Supply Analysis

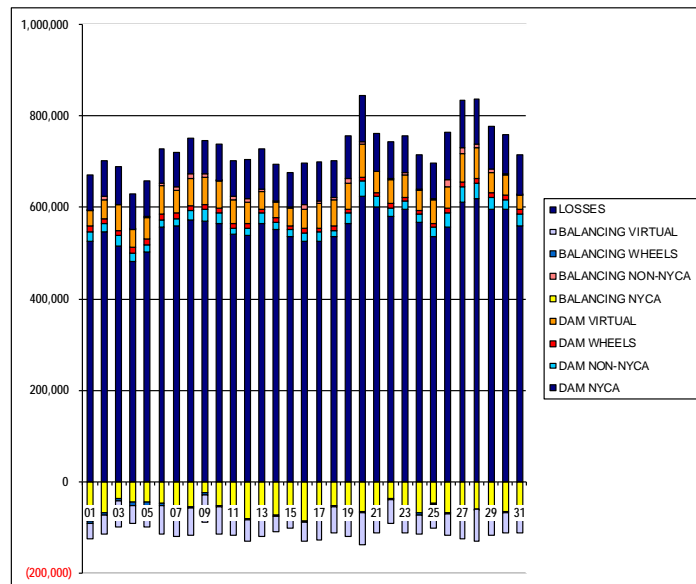
	MONDAY	TUESDAY	WEDNESDAY	THURSDAY	FRIDAY	SATURDAY	SUNDAY
			1	2	3	4	5
DAM NYCA			423,294	454,639	445,933	406,682	426,450
DAM NON-NYCA			97,894	105,533	95,027	86,678	96,879
DAM WHEELS			12,867	11,993	10,664	13,836	13,229
DAM VIRTUAL			69,348	56,214	65,039	53,680	52,177
BALANCING NYCA			13,877	14,154	17,190	17,827	23,292
BALANCING NON-NYCA			5,739	7,456	24,585	19,189	4,801
BALANCING WHEELS			(5,917)	(5,093)	(3,839)	(7,155)	(6,479)
BALANCING VIRTUAL			(69,348)	(56,214)	(65,039)	(53,680)	(52,177)
	6	7	8	9	10	11	12
DAM NYCA	475,605	474,237	492,669	506,370	499,447	467,458	464,286
DAM NON-NYCA	111,869	102,350	103,396	102,404	91,843	93,676	90,519
DAM WHEELS	12,347	11,781	10,717	11,283	9,503	10,039	9,341
DAM VIRTUAL	60,732	59,277	67,764	59,628	69,468	57,479	60,136
BALANCING NYCA	13,450	9,083	19,026	27,045	11,825	6,690	1,386
BALANCING NON-NYCA	5,109	8,021	11,992	14,675	12,751	9,876	11,346
BALANCING WHEELS	(5,445)	(4,394)	(3,343)	(3,571)	(2,283)	(2,889)	(2,341)
BALANCING VIRTUAL	(60,732)	(59,277)	(67,764)	(59,628)	(69,468)	(57,479)	(60,136)
	13	14	15	16	17	18	19
DAM NYCA	478,671	463,373	456,419	450,847	455,035	478,098	509,998
DAM NON-NYCA	91,541	87,719	80,504	80,358	83,965	81,010	86,300
DAM WHEELS	9,022	9,268	8,934	9,313	9,391	8,948	8,630
DAM VIRTUAL	70,087	63,150	63,730	65,989	71,562	59,688	61,057
BALANCING NYCA	21,305	17,993	12,700	12,781	12,741	4,350	17,133
BALANCING NON-NYCA	8,658	10,281	13,587	14,484	13,931	17,775	18,328
BALANCING WHEELS	(2,122)	(2,418)	(2,184)	(2,463)	(2,788)	(2,148)	(1,830)
BALANCING VIRTUAL	(70,087)	(63,150)	(63,730)	(65,989)	(71,562)	(59,688)	(61,057)
	20	21	22	23	24	25	26
DAM NYCA	574,993	542,983	507,660	518,850	483,988	470,583	507,578
DAM NON-NYCA	97,524	73,319	84,270	91,651	93,532	84,637	81,461
DAM WHEELS	9,381	9,489	9,567	8,200	9,778	9,512	9,791
DAM VIRTUAL	70,293	66,701	72,301	66,675	63,421	64,053	57,876
BALANCING NYCA	7,245	1,449	31,022	12,983	4,093	14,932	23,242
BALANCING NON-NYCA	18,575	25,511	21,526	12,106	10,162	17,857	27,810
BALANCING WHEELS	(2,181)	(2,518)	(2,717)	(1,200)	(2,828)	(2,712)	(3,121)
BALANCING VIRTUAL	(70,293)	(66,701)	(72,301)	(66,675)	(63,421)	(64,053)	(57,876)
	27	28	29	30	31		
DAM NYCA	567,222	565,299	534,898	520,225	481,955		
DAM NON-NYCA	91,390	92,453	85,005	94,120	91,852		
DAM WHEELS	9,586	9,289	9,549	9,711	9,008		
DAM VIRTUAL	64,606	79,590	60,890	60,174	55,018		
BALANCING NYCA	18,347	23,542	14,031	13,578	2,738		
BALANCING NON-NYCA	25,153	19,563	18,342	12,393	18,224		
BALANCING WHEELS	(2,638)	(2,089)	(2,399)	(2,555)	(1,808)		
BALANCING VIRTUAL	(64,606)	(79,590)	(60,890)	(60,174)	(55,018)		



SETTLEMENTS REPORT
 July 2020 Settlement Adjustment
 December 7, 2020

Initial Settlement – Market Withdrawals Analysis

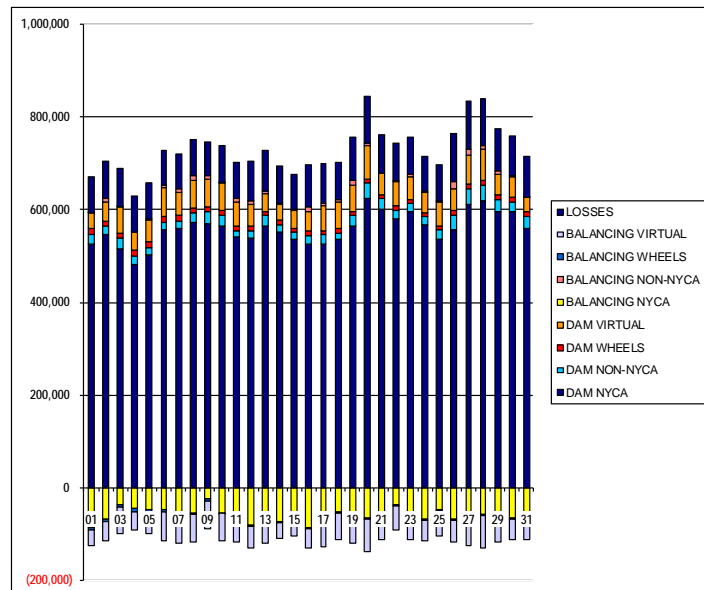
	MONDAY	TUESDAY	WEDNESDAY	THURSDAY	FRIDAY	SATURDAY	SUNDAY
			1	2	3	4	5
DAM NYCA			525,742	546,231	515,093	481,096	501,782
DAM NON-NYCA			21,721	18,031	22,819	17,630	15,903
DAM WHEELS			12,867	11,993	10,664	13,836	13,229
DAM VIRTUAL			32,216	41,002	56,621	38,888	47,084
BALANCING NYCA			(85,887)	(68,119)	(37,813)	(45,062)	(45,889)
BALANCING NON-NYCA			373	6,550	1,240	1,179	3,549
BALANCING WHEELS			(5,917)	(5,093)	(3,839)	(7,155)	(6,479)
BALANCING VIRTUAL			(32,216)	(41,002)	(56,621)	(38,888)	(47,084)
UFE/LOSSES			79,059	79,521	81,633	75,758	76,300
	6	7	8	9	10	11	12
DAM NYCA	557,229	559,755	573,747	569,317	564,779	540,967	538,525
DAM NON-NYCA	15,855	15,754	18,680	25,283	23,817	14,040	16,919
DAM WHEELS	12,347	11,781	10,717	11,283	9,503	10,039	9,341
DAM VIRTUAL	62,777	49,600	59,494	60,863	59,151	51,995	46,845
BALANCING NYCA	(47,022)	(65,348)	(54,369)	(25,055)	(53,826)	(62,661)	(80,611)
BALANCING NON-NYCA	4,505	8,001	11,092	6,014	1,484	6,074	8,029
BALANCING WHEELS	(5,445)	(4,394)	(3,343)	(3,571)	(2,283)	(2,889)	(2,341)
BALANCING VIRTUAL	(62,777)	(49,600)	(59,494)	(60,863)	(59,151)	(51,995)	(46,845)
UFE/LOSSES	75,459	75,737	78,302	74,708	79,069	79,401	84,861
	13	14	15	16	17	18	19
DAM NYCA	565,977	551,909	537,289	526,622	525,053	535,085	564,943
DAM NON-NYCA	21,498	16,428	13,733	17,354	20,399	14,264	21,938
DAM WHEELS	9,022	9,268	8,934	9,313	9,391	8,948	8,630
DAM VIRTUAL	39,517	33,661	37,907	41,949	53,866	57,812	57,640
BALANCING NYCA	(78,077)	(72,465)	(60,886)	(85,822)	(71,145)	(52,946)	(59,505)
BALANCING NON-NYCA	3,971	3,403	2,126	11,493	5,752	5,400	10,300
BALANCING WHEELS	(2,122)	(2,418)	(2,184)	(2,463)	(2,788)	(2,148)	(1,830)
BALANCING VIRTUAL	(39,517)	(33,661)	(37,907)	(41,949)	(53,866)	(57,812)	(57,640)
UFE/LOSSES	86,961	80,348	76,288	89,010	85,822	79,676	94,314
	20	21	22	23	24	25	26
DAM NYCA	624,145	600,727	581,089	595,954	568,530	535,594	557,820
DAM NON-NYCA	32,823	23,044	17,802	16,913	15,820	20,039	30,584
DAM WHEELS	9,381	9,489	9,567	8,200	9,778	9,512	9,791
DAM VIRTUAL	70,881	46,236	51,876	50,488	43,853	52,258	46,258
BALANCING NYCA	(64,966)	(63,310)	(37,347)	(61,437)	(69,319)	(48,077)	(68,481)
BALANCING NON-NYCA	6,149	(55)	3,048	4,491	931	1,254	14,987
BALANCING WHEELS	(2,181)	(2,518)	(2,717)	(1,200)	(2,828)	(2,712)	(3,121)
BALANCING VIRTUAL	(70,881)	(46,236)	(51,876)	(50,488)	(43,853)	(52,258)	(46,258)
UFE/LOSSES	100,506	83,048	80,008	79,872	75,449	79,404	105,167
	27	28	29	30	31		
DAM NYCA	611,019	619,610	596,861	595,850	559,446		
DAM NON-NYCA	34,021	33,464	25,575	21,112	26,764		
DAM WHEELS	9,586	9,289	9,549	9,711	9,008		
DAM VIRTUAL	63,592	69,338	45,102	43,944	30,841		
BALANCING NYCA	(59,495)	(59,123)	(69,717)	(65,155)	(79,912)		
BALANCING NON-NYCA	11,432	6,391	6,688	3,748	1,302		
BALANCING WHEELS	(2,638)	(2,089)	(2,399)	(2,555)	(1,808)		
BALANCING VIRTUAL	(63,592)	(69,338)	(45,102)	(43,944)	(30,841)		
UFE/LOSSES	103,636	99,960	92,339	84,960	87,387		



SETTLEMENTS REPORT
 July 2020 Settlement Adjustment
 December 7, 2020

4-Month Settlement Adjustment – Market Withdrawals Analysis

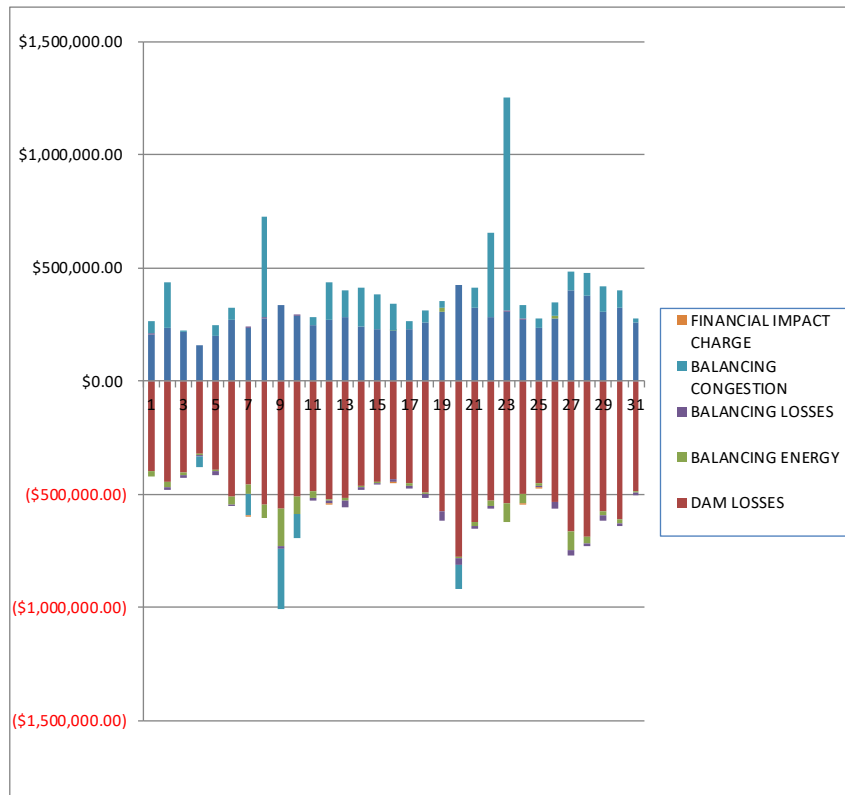
	MONDAY	TUESDAY	WEDNESDAY	THURSDAY	FRIDAY	SATURDAY	SUNDAY
			1	2	3	4	5
DAM NYCA			525,742	546,231	515,093	481,096	501,782
DAM NON-NYCA			21,721	18,031	22,819	17,630	15,903
DAM WHEELS			12,867	11,993	10,664	13,836	13,229
DAM VIRTUAL			32,216	41,002	56,621	38,888	47,084
BALANCING NYCA			(86,144)	(68,789)	(38,187)	(45,298)	(46,742)
BALANCING NON-NYCA			373	6,550	1,240	1,179	3,549
BALANCING WHEELS			(5,917)	(5,093)	(3,839)	(7,155)	(6,479)
BALANCING VIRTUAL			(32,216)	(41,002)	(56,621)	(38,888)	(47,084)
UFE/LOSSES			79,112	79,759	81,771	75,769	76,931
	6	7	8	9	10	11	12
DAM NYCA	557,229	559,755	573,747	569,317	564,779	540,967	538,525
DAM NON-NYCA	15,855	15,754	18,680	25,283	23,817	14,040	16,919
DAM WHEELS	12,347	11,781	10,717	11,283	9,503	10,039	9,341
DAM VIRTUAL	62,777	49,600	59,494	60,863	59,151	51,995	46,845
BALANCING NYCA	(47,077)	(65,595)	(54,854)	(24,794)	(53,982)	(62,824)	(80,801)
BALANCING NON-NYCA	4,505	8,001	11,092	6,014	1,484	6,074	8,029
BALANCING WHEELS	(5,445)	(4,394)	(3,343)	(3,571)	(2,283)	(2,889)	(2,341)
BALANCING VIRTUAL	(62,777)	(49,600)	(59,494)	(60,863)	(59,151)	(51,995)	(46,845)
UFE/LOSSES	75,710	75,923	78,418	74,674	79,768	79,443	84,865
	13	14	15	16	17	18	19
DAM NYCA	565,977	551,909	537,289	526,622	525,053	535,085	564,943
DAM NON-NYCA	21,498	16,428	13,733	17,354	20,399	14,264	21,938
DAM WHEELS	9,022	9,268	8,934	9,313	9,391	8,948	8,630
DAM VIRTUAL	39,517	33,661	37,907	41,949	53,866	57,812	57,640
BALANCING NYCA	(78,248)	(72,761)	(65,241)	(86,009)	(71,354)	(53,194)	(59,749)
BALANCING NON-NYCA	3,971	3,403	2,126	11,493	5,752	5,400	10,300
BALANCING WHEELS	(2,122)	(2,418)	(2,184)	(2,463)	(2,788)	(2,148)	(1,830)
BALANCING VIRTUAL	(39,517)	(33,661)	(37,907)	(41,949)	(53,866)	(57,812)	(57,640)
UFE/LOSSES	86,976	80,387	75,304	89,010	85,823	79,678	94,327
	20	21	22	23	24	25	26
DAM NYCA	624,145	600,727	581,089	595,954	568,530	535,594	557,820
DAM NON-NYCA	32,823	23,044	17,802	16,913	15,820	20,039	30,584
DAM WHEELS	9,381	9,489	9,567	8,200	9,778	9,512	9,791
DAM VIRTUAL	70,881	46,236	51,876	50,488	43,853	52,258	46,258
BALANCING NYCA	(65,309)	(63,504)	(37,468)	(61,638)	(68,955)	(48,282)	(68,466)
BALANCING NON-NYCA	6,149	(55)	3,048	4,491	931	1,254	14,987
BALANCING WHEELS	(2,181)	(2,518)	(2,717)	(1,200)	(2,828)	(2,712)	(3,121)
BALANCING VIRTUAL	(70,881)	(46,236)	(51,876)	(50,488)	(43,853)	(52,258)	(46,258)
UFE/LOSSES	101,112	83,050	80,007	79,870	75,448	79,404	105,167
	27	28	29	30	31		
DAM NYCA	611,019	619,610	596,861	595,850	559,446		
DAM NON-NYCA	34,021	33,464	25,575	21,112	26,764		
DAM WHEELS	9,586	9,289	9,549	9,711	9,008		
DAM VIRTUAL	63,592	69,338	45,102	43,944	30,841		
BALANCING NYCA	(58,076)	(58,668)	(69,139)	(65,353)	(80,130)		
BALANCING NON-NYCA	11,432	6,391	6,688	3,748	1,302		
BALANCING WHEELS	(2,638)	(2,089)	(2,399)	(2,555)	(1,808)		
BALANCING VIRTUAL	(63,592)	(69,338)	(45,102)	(43,944)	(30,841)		
UFE/LOSSES	104,198	100,620	92,292	84,959	87,386		



SETTLEMENTS REPORT
 July 2020 Settlement Adjustment
 December 7, 2020

Initial Settlement – Market Residuals Analysis

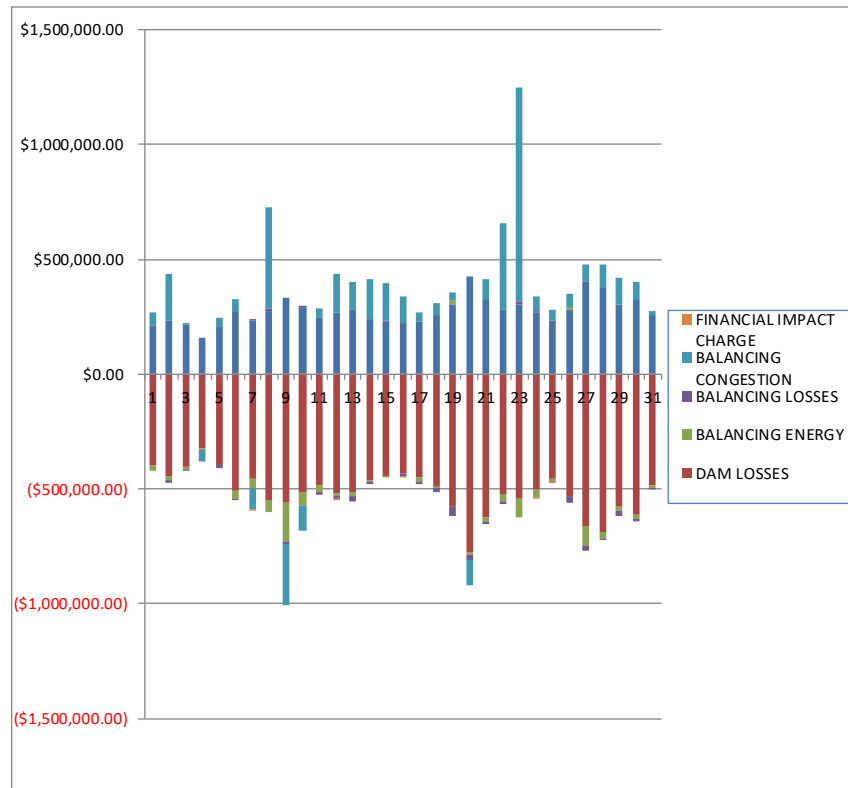
	MONDAY	TUESDAY	WEDNESDAY	THURSDAY	FRIDAY	SATURDAY	SUNDAY
			1	2	3	4	5
DAM ENERGY			\$205,921.20	\$235,215.47	\$215,541.03	\$159,848.00	\$202,248.55
DAM LOSSES			(\$399,733.45)	(\$443,108.45)	(\$405,100.81)	(\$321,352.16)	(\$389,145.69)
BALANCING ENERGY			(\$24,019.61)	(\$23,457.96)	(\$10,825.64)	(\$4,653.93)	(\$11,195.97)
BALANCING LOSSES			\$3,877.85	(\$11,312.15)	(\$10,564.02)	(\$5,489.30)	(\$17,792.81)
BALANCING CONGESTION			\$56,878.80	\$200,892.22	\$6,797.98	(\$48,290.92)	\$44,110.85
FINANCIAL IMPACT CHARGE			\$0.00	\$0.00	\$0.00	\$0.00	\$0.00
	6	7	8	9	10	11	12
DAM ENERGY	\$273,604.74	\$236,845.45	\$275,279.85	\$333,789.60	\$290,647.62	\$247,005.34	\$268,515.66
DAM LOSSES	(\$509,498.97)	(\$457,892.02)	(\$545,517.95)	(\$561,409.91)	(\$511,182.37)	(\$486,087.31)	(\$520,237.16)
BALANCING ENERGY	(\$35,773.63)	(\$38,432.45)	(\$57,982.39)	(\$165,814.06)	(\$76,067.67)	(\$29,645.52)	(\$8,443.72)
BALANCING LOSSES	(\$1,024.46)	\$1,014.13	\$9,249.52	(\$14,376.62)	\$4,198.51	(\$12,556.85)	(\$11,279.52)
BALANCING CONGESTION	\$50,951.11	(\$94,524.24)	\$439,378.11	(\$267,461.10)	(\$106,534.10)	\$37,967.93	\$170,812.65
FINANCIAL IMPACT CHARGE	\$0.00	(\$5,058.82)	\$0.00	\$0.00	\$0.00	\$0.00	(\$70.43)
	13	14	15	16	17	18	19
DAM ENERGY	\$281,301.88	\$238,456.49	\$226,661.74	\$221,182.72	\$229,256.82	\$257,177.86	\$304,897.25
DAM LOSSES	(\$516,285.01)	(\$462,821.43)	(\$444,743.79)	(\$430,944.71)	(\$450,094.47)	(\$491,451.57)	(\$575,170.21)
BALANCING ENERGY	(\$13,120.35)	(\$5,986.97)	(\$3,965.84)	\$2,842.77	(\$15,141.01)	(\$6,550.32)	\$17,350.51
BALANCING LOSSES	(\$26,609.35)	(\$12,946.92)	(\$175.66)	(\$14,581.63)	(\$10,977.26)	(\$15,187.29)	(\$41,021.59)
BALANCING CONGESTION	\$117,711.97	\$175,037.45	\$154,583.82	\$117,208.53	\$38,173.55	\$52,652.02	\$34,134.67
FINANCIAL IMPACT CHARGE	\$0.00	\$0.00	\$0.00	(\$6.19)	\$0.00	\$0.00	\$0.00
	20	21	22	23	24	25	26
DAM ENERGY	\$422,831.95	\$325,983.76	\$281,685.55	\$303,609.69	\$268,303.29	\$233,931.77	\$278,515.04
DAM LOSSES	(\$775,126.40)	(\$624,508.59)	(\$527,460.70)	(\$540,780.77)	(\$500,662.61)	(\$453,127.60)	(\$531,017.45)
BALANCING ENERGY	(\$8,885.39)	(\$16,820.66)	(\$26,886.25)	(\$80,316.58)	(\$38,072.70)	(\$11,145.93)	\$11,755.60
BALANCING LOSSES	(\$28,582.30)	(\$9,363.20)	(\$9,140.99)	\$9,394.95	\$8,882.12	(\$2,568.89)	(\$29,931.29)
BALANCING CONGESTION	(\$108,280.41)	\$87,431.73	\$372,282.68	\$937,373.18	\$60,904.33	\$45,114.68	\$56,479.46
FINANCIAL IMPACT CHARGE	\$0.00	\$0.00	\$0.00	\$0.00	(\$1.73)	(\$5.17)	\$0.00
	27	28	29	30	31		
DAM ENERGY	\$400,582.69	\$377,649.52	\$305,106.58	\$324,835.46	\$256,495.86		
DAM LOSSES	(\$661,361.52)	(\$685,948.50)	(\$574,850.66)	(\$611,496.72)	(\$485,800.11)		
BALANCING ENERGY	(\$86,276.27)	(\$31,518.30)	(\$18,279.03)	(\$16,598.91)	(\$8,964.16)		
BALANCING LOSSES	(\$24,734.21)	(\$10,248.33)	(\$21,949.57)	(\$10,973.53)	(\$8,746.96)		
BALANCING CONGESTION	\$85,338.44	\$99,852.25	\$115,927.98	\$76,007.95	\$19,207.85		
FINANCIAL IMPACT CHARGE	\$0.00	\$0.00	\$0.00	\$0.00	\$0.00		



SETTLEMENTS REPORT
 July 2020 Settlement Adjustment
 December 7, 2020

4-Month Settlement Adjustment – Market Residuals Analysis

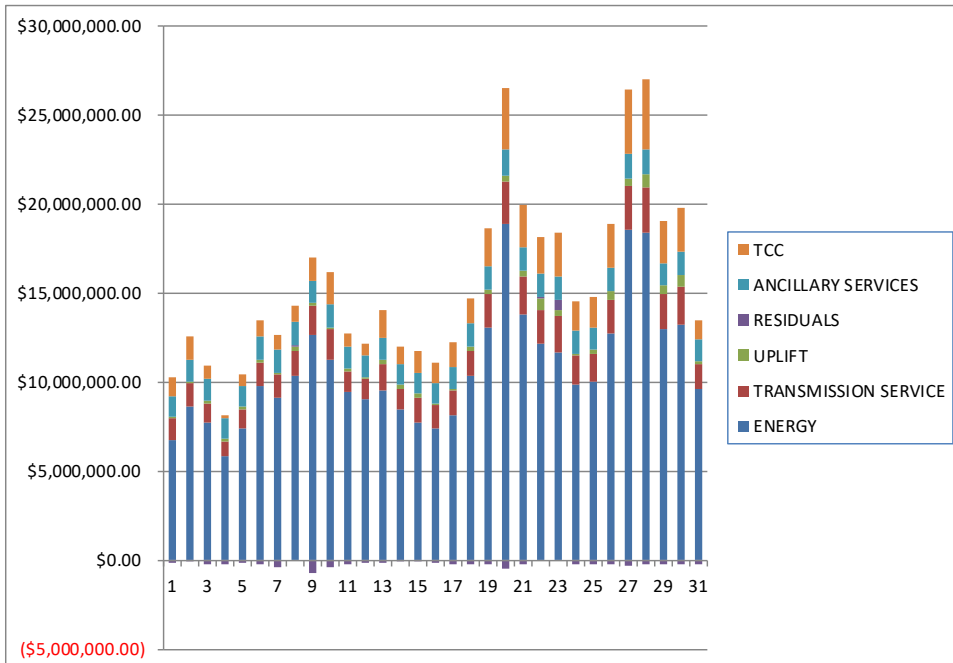
	MONDAY	TUESDAY	WEDNESDAY	THURSDAY	FRIDAY	SATURDAY	SUNDAY
			1	2	3	4	5
DAM ENERGY			\$205,921.20	\$235,215.47	\$215,541.04	\$159,848.01	\$202,248.55
DAM LOSSES			(\$399,733.45)	(\$443,108.45)	(\$405,100.82)	(\$321,352.16)	(\$389,145.70)
BALANCING ENERGY			(\$23,141.40)	(\$19,502.10)	(\$8,397.29)	(\$4,451.06)	(\$2,317.87)
BALANCING LOSSES			\$4,210.60	(\$10,285.38)	(\$9,921.31)	(\$5,125.63)	(\$16,509.52)
BALANCING CONGESTION			\$56,906.10	\$203,783.12	\$9,433.42	(\$46,743.56)	\$44,557.32
FINANCIAL IMPACT CHARGE			\$0.00	\$0.00	\$0.00	\$0.00	\$0.00
	6	7	8	9	10	11	12
DAM ENERGY	\$273,604.75	\$236,845.45	\$275,279.85	\$333,789.59	\$290,647.61	\$247,005.34	\$268,515.66
DAM LOSSES	(\$509,498.98)	(\$457,892.02)	(\$545,517.95)	(\$561,409.91)	(\$511,182.36)	(\$486,087.31)	(\$520,237.16)
BALANCING ENERGY	(\$34,715.49)	(\$37,744.32)	(\$55,523.59)	(\$166,612.36)	(\$61,715.26)	(\$28,887.93)	(\$8,406.19)
BALANCING LOSSES	(\$597.01)	\$1,439.32	\$9,859.41	(\$13,893.52)	\$4,625.05	(\$12,350.66)	(\$11,000.31)
BALANCING CONGESTION	\$52,162.21	(\$94,054.24)	\$439,967.26	(\$266,874.71)	(\$105,834.20)	\$38,608.99	\$170,667.96
FINANCIAL IMPACT CHARGE	\$0.00	(\$5,058.85)	\$0.00	\$0.00	\$0.00	\$0.00	(\$70.31)
	13	14	15	16	17	18	19
DAM ENERGY	\$281,301.87	\$238,456.49	\$226,661.74	\$221,182.72	\$229,256.82	\$257,177.86	\$304,897.25
DAM LOSSES	(\$516,285.00)	(\$462,821.44)	(\$444,743.79)	(\$430,944.71)	(\$450,094.47)	(\$491,451.57)	(\$575,170.21)
BALANCING ENERGY	(\$12,629.69)	(\$5,246.53)	(\$4,779.72)	\$2,831.94	(\$15,123.75)	(\$6,524.18)	\$17,534.33
BALANCING LOSSES	(\$25,973.91)	(\$12,421.27)	\$5,140.86	(\$14,213.35)	(\$10,549.41)	(\$14,803.54)	(\$40,534.28)
BALANCING CONGESTION	\$118,048.68	\$174,978.58	\$163,137.78	\$116,858.26	\$38,205.58	\$52,830.10	\$34,897.36
FINANCIAL IMPACT CHARGE	\$0.00	\$0.00	\$0.00	(\$6.06)	\$0.00	\$0.00	\$0.00
	20	21	22	23	24	25	26
DAM ENERGY	\$422,831.95	\$325,983.76	\$281,685.55	\$303,609.69	\$268,303.30	\$233,931.77	\$278,515.04
DAM LOSSES	(\$775,126.40)	(\$624,508.59)	(\$527,460.70)	(\$540,780.77)	(\$500,662.61)	(\$453,127.60)	(\$531,017.45)
BALANCING ENERGY	(\$8,468.96)	(\$16,782.15)	(\$26,911.24)	(\$80,301.07)	(\$38,073.65)	(\$11,150.56)	\$11,750.09
BALANCING LOSSES	(\$27,982.26)	(\$8,870.73)	(\$8,612.06)	\$9,833.55	\$9,148.28	(\$2,192.90)	(\$29,382.03)
BALANCING CONGESTION	(\$105,648.18)	\$87,745.14	\$375,809.88	\$937,460.04	\$59,306.56	\$44,319.65	\$57,494.01
FINANCIAL IMPACT CHARGE	\$0.00	\$0.00	\$0.00	\$0.00	(\$1.74)	(\$5.22)	\$0.00
	27	28	29	30	31		
DAM ENERGY	\$400,582.69	\$377,649.52	\$305,106.57	\$324,835.45	\$256,495.86		
DAM LOSSES	(\$661,361.52)	(\$685,948.50)	(\$574,850.66)	(\$611,496.72)	(\$485,800.11)		
BALANCING ENERGY	(\$84,227.83)	(\$28,934.25)	(\$20,186.23)	(\$16,608.26)	(\$8,999.24)		
BALANCING LOSSES	(\$24,688.33)	(\$9,396.60)	(\$21,652.76)	(\$10,453.55)	(\$8,366.18)		
BALANCING CONGESTION	\$78,908.28	\$98,604.04	\$115,370.84	\$77,843.19	\$18,736.70		
FINANCIAL IMPACT CHARGE	\$0.00	\$0.00	\$0.00	\$0.00	\$0.00		



SETTLEMENTS REPORT
July 2020 Settlement Adjustment
December 7, 2020

Initial Settlement – Market Costs Analysis

	MONDAY	TUESDAY	WEDNESDAY	THURSDAY	FRIDAY	SATURDAY	SUNDAY
			1	2	3	4	5
ENERGY			\$6,766,247.61	\$8,623,639.00	\$7,698,741.91	\$5,843,057.17	\$7,442,799.95
TRANSMISSION SERVICE			\$1,220,478.22	\$1,341,543.06	\$1,127,691.21	\$866,264.35	\$1,055,019.43
UPLIFT			\$72,707.50	\$65,665.50	\$146,867.61	\$123,375.64	\$126,815.64
RESIDUALS			(\$157,075.21)	(\$41,770.87)	(\$204,151.46)	(\$219,938.31)	(\$171,775.07)
ANCILLARY SERVICES			\$1,169,015.55	\$1,248,971.61	\$1,229,083.43	\$1,138,002.67	\$1,196,265.80
TCC			\$1,041,819.67	\$1,272,368.68	\$739,335.79	\$203,831.99	\$605,990.88
	6	7	8	9	10	11	12
ENERGY	\$9,755,671.23	\$9,134,765.81	\$10,405,896.73	\$12,679,538.75	\$11,239,299.47	\$9,494,716.05	\$9,046,395.14
TRANSMISSION SERVICE	\$1,349,828.09	\$1,327,396.36	\$1,343,606.77	\$1,608,693.42	\$1,729,644.26	\$1,148,467.58	\$1,114,962.92
UPLIFT	\$130,248.83	\$68,467.43	\$244,611.75	\$147,099.45	\$121,546.18	\$173,606.87	\$140,300.89
RESIDUALS	(\$221,741.21)	(\$358,047.95)	\$120,407.14	(\$675,272.09)	(\$398,938.01)	(\$243,316.41)	(\$100,702.52)
ANCILLARY SERVICES	\$1,323,038.29	\$1,294,059.79	\$1,323,476.75	\$1,299,761.28	\$1,316,405.61	\$1,225,982.63	\$1,220,616.07
TCC	\$895,208.06	\$805,807.72	\$860,277.66	\$1,264,445.91	\$1,807,228.11	\$677,997.87	\$681,913.50
	13	14	15	16	17	18	19
ENERGY	\$9,563,280.52	\$8,438,372.67	\$7,701,941.31	\$7,449,578.12	\$8,175,796.38	\$10,372,849.61	\$13,099,947.54
TRANSMISSION SERVICE	\$1,423,222.06	\$1,219,384.41	\$1,421,241.57	\$1,254,079.38	\$1,378,593.48	\$1,415,648.00	\$1,827,126.30
UPLIFT	\$277,368.69	\$178,682.24	\$223,744.20	\$99,208.32	\$90,159.83	\$247,064.27	\$265,258.46
RESIDUALS	(\$157,000.86)	(\$68,261.38)	(\$67,639.73)	(\$104,298.51)	(\$208,782.37)	(\$203,359.30)	(\$259,809.37)
ANCILLARY SERVICES	\$1,271,059.43	\$1,225,985.10	\$1,193,329.62	\$1,178,068.48	\$1,195,612.89	\$1,253,891.43	\$1,338,025.36
TCC	\$1,516,250.48	\$961,770.08	\$1,254,095.04	\$1,127,410.36	\$1,450,105.86	\$1,441,544.19	\$2,093,336.88
	20	21	22	23	24	25	26
ENERGY	\$18,940,301.87	\$13,799,491.16	\$12,170,463.73	\$11,698,767.80	\$9,852,686.57	\$10,029,238.54	\$12,784,351.18
TRANSMISSION SERVICE	\$2,362,790.22	\$2,108,006.32	\$1,901,614.64	\$2,046,272.75	\$1,654,194.10	\$1,573,832.40	\$1,849,763.42
UPLIFT	\$282,291.99	\$365,999.13	\$637,556.14	\$284,361.91	\$127,419.63	\$262,793.86	\$503,994.03
RESIDUALS	(\$498,042.55)	(\$237,276.96)	\$90,480.29	\$629,280.47	(\$200,647.30)	(\$187,801.14)	(\$214,198.64)
ANCILLARY SERVICES	\$1,526,508.97	\$1,339,193.88	\$1,318,962.64	\$1,315,339.25	\$1,259,089.30	\$1,231,635.80	\$1,303,588.83
TCC	\$3,424,472.91	\$2,381,494.65	\$2,066,236.80	\$2,413,633.47	\$1,680,935.26	\$1,730,225.91	\$2,472,941.72
	27	28	29	30	31		
ENERGY	\$18,613,281.86	\$18,390,111.63	\$12,958,192.98	\$13,232,650.90	\$9,628,087.79		
TRANSMISSION SERVICE	\$2,429,019.36	\$2,587,780.90	\$2,014,154.45	\$2,118,464.26	\$1,415,831.15		
UPLIFT	\$395,014.35	\$698,266.74	\$455,891.96	\$664,459.84	\$119,431.03		
RESIDUALS	(\$286,450.87)	(\$250,213.36)	(\$194,044.70)	(\$238,225.75)	(\$227,807.52)		
ANCILLARY SERVICES	\$1,397,591.56	\$1,433,794.06	\$1,293,923.69	\$1,333,899.67	\$1,256,891.63		
TCC	\$3,578,479.64	\$3,882,981.00	\$2,321,709.62	\$2,464,489.66	\$1,092,956.50		



SETTLEMENTS REPORT
 July 2020 Settlement Adjustment
 December 7, 2020

4-Month Settlement Adjustment – Market Costs Analysis

	MONDAY	TUESDAY	WEDNESDAY	THURSDAY	FRIDAY	SATURDAY	SUNDAY
			1	2	3	4	5
ENERGY			\$6,762,047.55	\$8,608,394.13	\$7,689,261.37	\$5,838,781.77	\$7,428,778.41
TRANSMISSION SERVICE			\$1,219,639.30	\$1,339,738.17	\$1,126,841.70	\$865,566.96	\$1,053,507.91
UPLIFT			\$72,709.01	\$65,666.00	\$146,867.62	\$123,602.80	\$126,815.64
RESIDUALS			(\$155,836.95)	(\$33,897.34)	(\$198,444.96)	(\$217,824.40)	(\$161,167.22)
ANCILLARY SERVICES			\$1,168,128.39	\$1,246,912.93	\$1,231,037.00	\$1,137,260.53	\$1,194,535.53
TCC			\$1,041,819.67	\$1,272,368.68	\$736,449.14	\$203,831.99	\$606,008.98
	6	7	8	9	10	11	12
ENERGY	\$9,756,091.78	\$9,128,523.67	\$10,396,406.45	\$12,707,012.04	\$11,235,839.84	\$9,491,206.50	\$9,043,066.46
TRANSMISSION SERVICE	\$1,348,717.48	\$1,326,107.95	\$1,341,574.42	\$1,607,537.48	\$1,728,044.45	\$1,147,755.91	\$1,114,309.31
UPLIFT	\$229,858.55	\$142,095.77	\$246,388.79	\$150,311.85	\$121,546.00	\$173,606.52	\$140,300.73
RESIDUALS	(\$219,044.52)	(\$356,464.66)	\$124,064.98	(\$675,000.91)	(\$383,459.16)	(\$241,711.57)	(\$100,530.35)
ANCILLARY SERVICES	\$1,321,860.35	\$1,292,697.88	\$1,325,393.83	\$1,298,725.48	\$1,314,793.07	\$1,226,778.49	\$1,219,782.11
TCC	\$895,240.76	\$805,807.72	\$856,256.30	\$1,264,445.91	\$1,807,184.77	\$676,465.90	\$682,058.78
	13	14	15	16	17	18	19
ENERGY	\$9,559,006.85	\$8,431,712.73	\$7,577,094.45	\$7,446,639.49	\$8,171,686.68	\$10,368,377.63	\$13,094,101.31
TRANSMISSION SERVICE	\$1,422,573.00	\$1,217,782.51	\$1,414,885.64	\$1,253,398.67	\$1,377,955.93	\$1,414,328.30	\$1,825,415.11
UPLIFT	\$277,368.62	\$178,682.38	\$223,743.85	\$99,210.03	\$90,159.68	\$247,064.25	\$265,355.21
RESIDUALS	(\$155,538.05)	(\$67,054.17)	(\$54,583.13)	(\$104,291.20)	(\$208,305.23)	(\$202,771.33)	(\$258,375.55)
ANCILLARY SERVICES	\$1,273,347.55	\$1,223,607.96	\$1,185,973.17	\$1,177,178.59	\$1,193,028.18	\$1,251,752.89	\$1,336,042.75
TCC	\$1,513,290.72	\$962,511.25	\$1,254,463.21	\$1,127,586.32	\$1,452,011.62	\$1,442,333.64	\$2,093,593.77
	20	21	22	23	24	25	26
ENERGY	\$18,929,787.93	\$13,794,749.40	\$12,165,413.11	\$11,694,561.77	\$9,865,158.71	\$10,026,700.35	\$12,784,943.13
TRANSMISSION SERVICE	\$2,360,942.26	\$2,105,985.93	\$1,899,963.56	\$2,044,812.23	\$1,653,402.19	\$1,572,155.99	\$1,848,524.33
UPLIFT	\$574,220.42	\$365,997.81	\$637,552.89	\$284,362.10	\$127,419.89	\$262,794.09	\$503,994.03
RESIDUALS	(\$494,393.85)	(\$236,432.57)	\$94,511.43	\$629,821.44	(\$201,979.86)	(\$188,224.86)	(\$212,640.34)
ANCILLARY SERVICES	\$1,477,781.36	\$1,337,186.91	\$1,324,286.15	\$1,321,019.49	\$1,258,129.96	\$1,229,601.28	\$1,299,286.82
TCC	\$3,471,134.89	\$2,381,494.65	\$2,059,282.92	\$2,406,482.53	\$1,681,242.73	\$1,730,580.47	\$2,476,052.43
	27	28	29	30	31		
ENERGY	\$18,693,646.77	\$18,408,544.88	\$12,981,562.78	\$13,226,780.42	\$9,623,956.00		
TRANSMISSION SERVICE	\$2,429,087.40	\$2,586,918.18	\$2,013,456.15	\$2,116,776.64	\$1,414,881.52		
UPLIFT	\$639,542.90	\$978,727.07	\$455,785.70	\$664,458.46	\$119,439.91		
RESIDUALS	(\$290,786.71)	(\$248,025.79)	(\$196,212.24)	(\$235,879.89)	(\$227,932.97)		
ANCILLARY SERVICES	\$1,397,968.61	\$1,434,135.63	\$1,293,355.35	\$1,332,210.60	\$1,255,786.90		
TCC	\$3,578,481.27	\$3,881,775.19	\$2,321,709.62	\$2,464,489.66	\$1,093,078.38		

