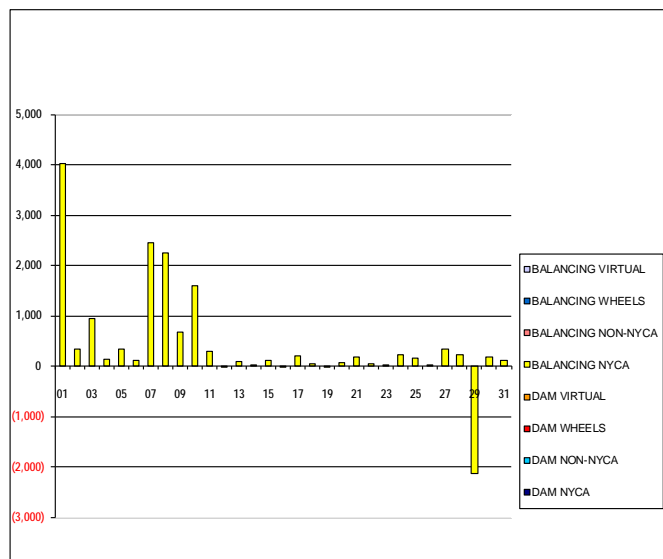


SETTLEMENTS REPORT
 August 2020 Settlement Adjustment
 January 8, 2020

Settlement Adjustment – Market Supply Delta Analysis

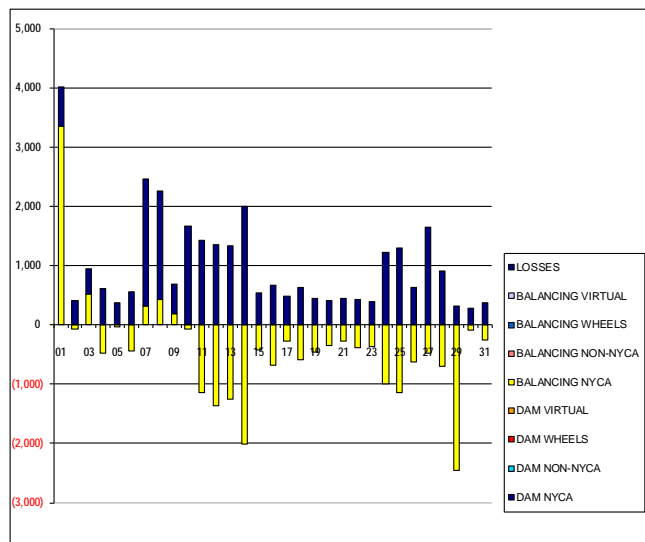
	MONDAY	TUESDAY	WEDNESDAY	THURSDAY	FRIDAY	SATURDAY	SUNDAY
DAM NYCA						1	2
DAM NON-NYCA						0	0
DAM WHEELS						0	0
DAM VIRTUAL						0	0
BALANCING NYCA						4,021	338
BALANCING NON-NYCA						0	0
BALANCING WHEELS						0	0
BALANCING VIRTUAL						0	0
	3	4	5	6	7	8	9
DAM NYCA	0	0	0	0	0	0	0
DAM NON-NYCA	0	0	0	0	0	0	0
DAM WHEELS	0	0	0	0	0	0	0
DAM VIRTUAL	0	0	0	0	0	0	0
BALANCING NYCA	951	145	343	111	2,456	2,256	680
BALANCING NON-NYCA	0	0	0	0	0	0	0
BALANCING WHEELS	0	0	0	0	0	0	0
BALANCING VIRTUAL	0	0	0	0	0	0	0
	10	11	12	13	14	15	16
DAM NYCA	0	0	0	0	0	0	0
DAM NON-NYCA	0	0	0	0	0	0	0
DAM WHEELS	0	0	0	0	0	0	0
DAM VIRTUAL	0	0	0	0	0	0	0
BALANCING NYCA	1,590	293	(14)	81	1	107	(6)
BALANCING NON-NYCA	0	0	0	0	0	0	0
BALANCING WHEELS	0	0	0	0	0	0	0
BALANCING VIRTUAL	0	0	0	0	0	0	0
	17	18	19	20	21	22	23
DAM NYCA	0	0	0	0	0	0	0
DAM NON-NYCA	0	0	0	0	0	0	0
DAM WHEELS	0	0	0	0	0	0	0
DAM VIRTUAL	0	0	0	0	0	0	0
BALANCING NYCA	207	47	(22)	66	170	36	26
BALANCING NON-NYCA	0	0	0	0	0	0	0
BALANCING WHEELS	0	0	0	0	0	0	0
BALANCING VIRTUAL	0	0	0	0	0	0	0
	24	25	26	27	28	29	30
DAM NYCA	0	0	0	0	0	0	0
DAM NON-NYCA	0	0	0	0	0	0	0
DAM WHEELS	0	0	0	0	0	0	0
DAM VIRTUAL	0	0	0	0	0	0	0
BALANCING NYCA	226	155	10	337	215	(2,139)	179
BALANCING NON-NYCA	0	0	0	0	0	0	0
BALANCING WHEELS	0	0	0	0	0	0	0
BALANCING VIRTUAL	0	0	0	0	0	0	0
	31						
DAM NYCA	0						
DAM NON-NYCA	0						
DAM WHEELS	0						
DAM VIRTUAL	0						
BALANCING NYCA	121						
BALANCING NON-NYCA	0						
BALANCING WHEELS	0						
BALANCING VIRTUAL	0						



SETTLEMENTS REPORT
August 2020 Settlement Adjustment
January 8, 2020

Settlement Adjustment – Market Withdrawals Delta Analysis

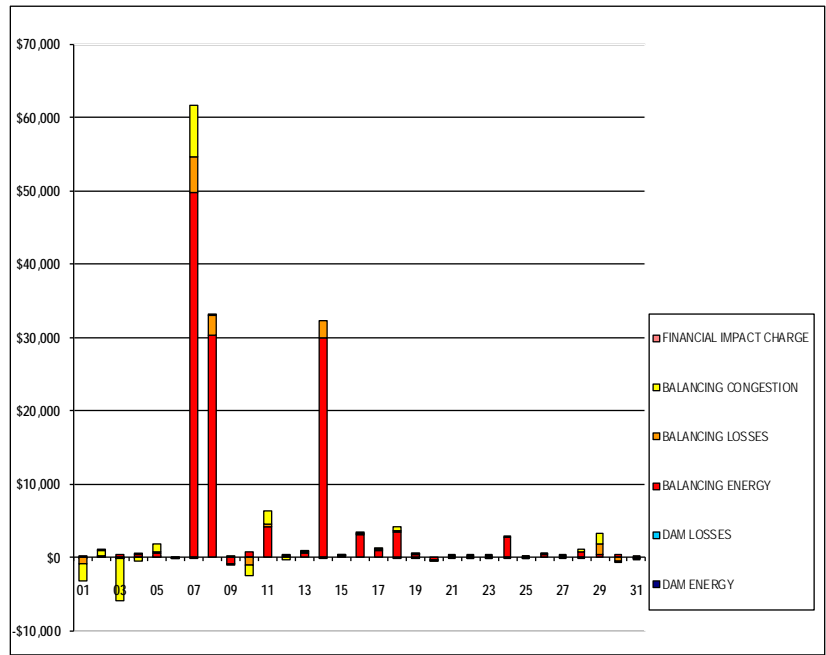
	MONDAY	TUESDAY	WEDNESDAY	THURSDAY	FRIDAY	SATURDAY	SUNDAY
DAM NYCA						1	2
DAM NON-NYCA						0	0
DAM WHEELS						0	0
DAM VIRTUAL						0	0
BALANCING NYCA						3,345	(78)
BALANCING NON-NYCA						0	0
BALANCING WHEELS						0	0
BALANCING VIRTUAL						0	0
UFE/LOSSES						676	416
DAM NYCA	3	4	5	6	7	8	9
DAM NON-NYCA	0	0	0	0	0	0	0
DAM WHEELS	0	0	0	0	0	0	0
DAM VIRTUAL	0	0	0	0	0	0	0
BALANCING NYCA	511	(470)	(26)	(446)	310	436	193
BALANCING NON-NYCA	0	0	0	0	0	0	0
BALANCING WHEELS	0	0	0	0	0	0	0
BALANCING VIRTUAL	0	0	0	0	0	0	0
UFE/LOSSES	440	614	370	557	2,146	1,820	487
DAM NYCA	10	11	12	13	14	15	16
DAM NON-NYCA	0	0	0	0	0	0	0
DAM WHEELS	0	0	0	0	0	0	0
DAM VIRTUAL	0	0	0	0	0	0	0
BALANCING NYCA	(68)	(1,134)	(1,360)	(1,251)	(2,005)	(430)	(680)
BALANCING NON-NYCA	0	0	0	0	0	0	0
BALANCING WHEELS	0	0	0	0	0	0	0
BALANCING VIRTUAL	0	0	0	0	0	0	0
UFE/LOSSES	1,658	1,427	1,346	1,333	2,006	538	674
DAM NYCA	17	18	19	20	21	22	23
DAM NON-NYCA	0	0	0	0	0	0	0
DAM WHEELS	0	0	0	0	0	0	0
DAM VIRTUAL	0	0	0	0	0	0	0
BALANCING NYCA	(280)	(586)	(462)	(342)	(268)	(388)	(369)
BALANCING NON-NYCA	0	0	0	0	0	0	0
BALANCING WHEELS	0	0	0	0	0	0	0
BALANCING VIRTUAL	0	0	0	0	0	0	0
UFE/LOSSES	487	633	440	408	438	424	395
DAM NYCA	24	25	26	27	28	29	30
DAM NON-NYCA	0	0	0	0	0	0	0
DAM WHEELS	0	0	0	0	0	0	0
DAM VIRTUAL	0	0	0	0	0	0	0
BALANCING NYCA	(992)	(1,134)	(629)	(469)	(700)	(2,457)	(93)
BALANCING NON-NYCA	0	0	0	0	0	0	0
BALANCING WHEELS	0	0	0	0	0	0	0
BALANCING VIRTUAL	0	0	0	0	0	0	0
UFE/LOSSES	1,218	1,289	639	1,650	914	319	272
DAM NYCA	31						
DAM NON-NYCA	0						
DAM WHEELS	0						
DAM VIRTUAL	0						
BALANCING NYCA	(250)						
BALANCING NON-NYCA	0						
BALANCING WHEELS	0						
BALANCING VIRTUAL	0						
UFE/LOSSES	371						



SETTLEMENTS REPORT
 August 2020 Settlement Adjustment
 January 8, 2020

Settlement Adjustment – Market Residuals Delta Analysis

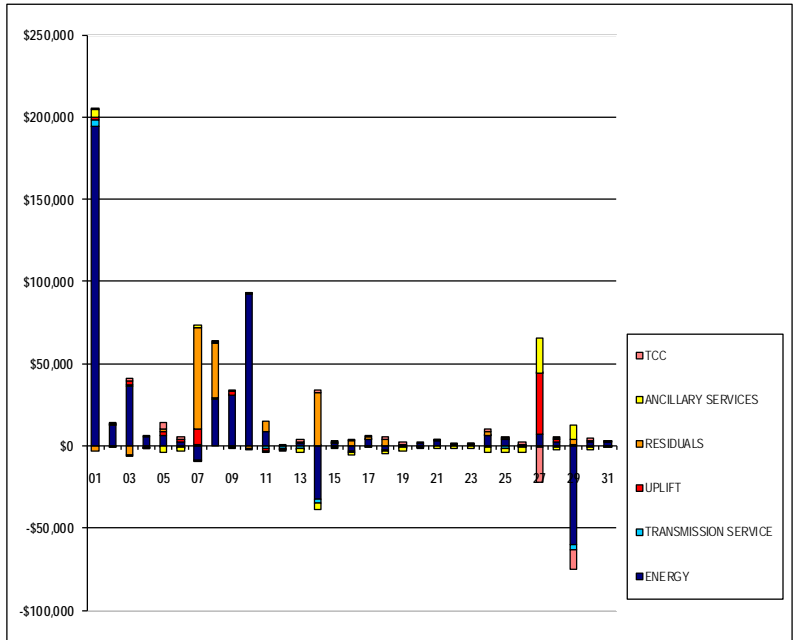
	MONDAY	TUESDAY	WEDNESDAY	THURSDAY	FRIDAY	SATURDAY	SUNDAY
						1	2
DAM ENERGY						\$0.00	\$0.00
DAM LOSSES						(\$0.01)	\$0.00
BALANCING ENERGY						\$263.11	\$55.28
BALANCING LOSSES						(\$902.81)	\$60.96
BALANCING CONGESTION						(\$2,297.82)	\$807.00
FINANCIAL IMPACT CHARGE						\$0.00	\$0.06
	3	4	5	6	7	8	9
DAM ENERGY	(\$0.01)	(\$0.01)	\$0.01	\$0.01	\$0.00	\$0.00	\$0.00
DAM LOSSES	(\$0.01)	\$0.00	\$0.01	\$0.00	\$0.00	\$0.00	\$0.01
BALANCING ENERGY	\$437.91	\$271.33	\$545.91	(\$16.29)	\$49,783.66	\$30,186.48	(\$909.43)
BALANCING LOSSES	(\$260.19)	\$35.22	\$93.27	(\$1.09)	\$4,861.58	\$2,852.27	(\$182.06)
BALANCING CONGESTION	(\$5,762.08)	(\$574.58)	\$1,213.87	(\$9.61)	\$6,949.96	\$37.50	\$250.19
FINANCIAL IMPACT CHARGE	\$0.00	\$0.00	\$0.00	\$0.00	(\$0.04)	\$0.00	\$0.00
	10	11	12	13	14	15	16
DAM ENERGY	(\$0.01)	\$0.01	\$0.00	\$0.00	\$0.00	\$0.00	\$0.00
DAM LOSSES	\$0.00	\$0.00	\$0.00	\$0.00	\$0.00	\$0.00	\$0.01
BALANCING ENERGY	\$783.35	\$4,100.55	\$159.83	\$591.09	\$29,935.08	\$162.92	\$3,052.34
BALANCING LOSSES	(\$1,144.47)	\$489.21	\$20.74	\$81.61	\$2,374.98	\$8.62	\$270.93
BALANCING CONGESTION	(\$1,324.61)	\$1,773.55	(\$298.84)	\$230.03	(\$89.48)	\$9.91	\$19.67
FINANCIAL IMPACT CHARGE	\$0.00	\$0.00	\$0.00	\$0.00	\$0.00	\$0.00	\$0.00
	17	18	19	20	21	22	23
DAM ENERGY	\$0.00	(\$0.01)	(\$0.01)	\$0.00	\$0.00	(\$0.01)	\$0.00
DAM LOSSES	\$0.00	\$0.00	\$0.00	\$0.00	\$0.00	\$0.00	(\$0.01)
BALANCING ENERGY	\$953.55	\$3,346.45	\$391.37	(\$344.51)	\$246.12	\$91.90	\$130.64
BALANCING LOSSES	\$98.13	\$333.74	\$29.44	(\$31.64)	\$35.28	\$15.76	\$17.42
BALANCING CONGESTION	\$119.34	\$513.01	\$99.43	(\$22.52)	(\$120.48)	(\$24.66)	(\$1.69)
FINANCIAL IMPACT CHARGE	\$0.00	\$0.00	\$0.00	\$0.00	\$0.00	\$0.00	\$0.00
	24	25	26	27	28	29	30
DAM ENERGY	\$0.00	(\$0.01)	\$0.01	\$0.00	\$0.00	\$0.00	\$0.00
DAM LOSSES	\$0.00	(\$0.01)	\$0.01	\$0.01	\$0.00	\$0.00	\$0.00
BALANCING ENERGY	\$2,707.24	\$1.25	\$327.28	\$195.45	\$809.38	\$383.74	\$274.38
BALANCING LOSSES	\$210.78	\$19.26	\$25.94	\$35.01	(\$76.61)	\$1,352.99	(\$472.36)
BALANCING CONGESTION	(\$45.95)	(\$183.52)	\$16.07	(\$228.62)	\$315.29	\$1,438.14	(\$169.64)
FINANCIAL IMPACT CHARGE	\$0.00	\$0.00	\$0.00	\$0.00	\$0.00	\$0.00	\$0.00
	31						
DAM ENERGY	\$0.00						
DAM LOSSES	(\$0.01)						
BALANCING ENERGY	(\$113.41)						
BALANCING LOSSES	\$7.96						
BALANCING CONGESTION	(\$0.15)						
FINANCIAL IMPACT CHARGE	\$0.00						



SETTLEMENTS REPORT
August 2020 Settlement Adjustment
January 8, 2020

Settlement Adjustment – Market Costs Delta Analysis

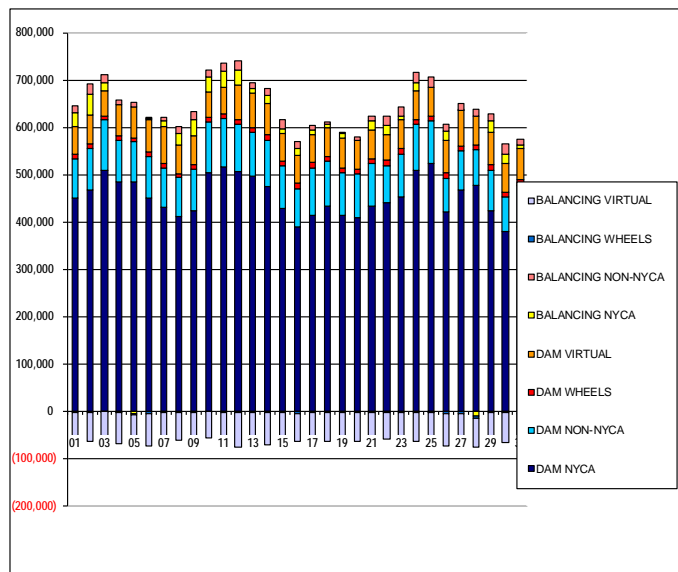
	MONDAY	TUESDAY	WEDNESDAY	THURSDAY	FRIDAY	SATURDAY	SUNDAY
						1	2
ENERGY						\$194,678.45	\$12,277.68
TRANSMISSION SERVICE						\$3,679.18	(\$85.55)
UPLIFT						\$1,262.48	\$312.41
RESIDUALS						(\$2,937.53)	\$923.30
ANCILLARY SERVICES						\$5,267.21	(\$525.49)
TCC						\$95.81	\$507.80
	3	4	5	6	7	8	9
ENERGY	\$36,229.48	\$5,352.68	\$6,425.50	\$2,041.37	(\$8,623.08)	\$28,722.00	\$30,368.62
TRANSMISSION SERVICE	\$562.59	(\$516.84)	(\$29.04)	(\$490.78)	\$341.24	\$479.83	\$212.31
UPLIFT	\$2,485.09	\$763.30	\$1,828.16	\$1,705.84	\$10,187.65	\$0.01	\$2,915.82
RESIDUALS	(\$5,584.38)	(\$268.04)	\$1,853.07	(\$26.98)	\$61,595.16	\$33,076.25	(\$841.29)
ANCILLARY SERVICES	(\$909.75)	(\$377.65)	(\$4,036.46)	(\$2,540.63)	\$1,682.59	\$723.85	(\$130.81)
TCC	\$1,839.44	(\$175.03)	\$4,083.47	\$2,009.81	(\$1,040.73)	\$103.27	\$589.64
	10	11	12	13	14	15	16
ENERGY	\$92,205.45	\$8,849.77	(\$130.41)	\$1,652.27	(\$32,561.81)	\$1,906.39	(\$3,361.36)
TRANSMISSION SERVICE	(\$74.37)	(\$1,247.79)	(\$1,496.33)	(\$1,376.54)	(\$2,204.94)	(\$473.19)	(\$747.74)
UPLIFT	\$277.53	(\$1,603.22)	\$1.38	(\$0.03)	\$331.19	\$2.25	\$0.01
RESIDUALS	(\$1,685.74)	\$6,363.32	(\$118.27)	\$902.73	\$32,220.58	\$181.45	\$3,342.95
ANCILLARY SERVICES	(\$592.33)	(\$1,393.57)	(\$503.61)	(\$2,641.28)	(\$4,303.43)	(\$667.96)	(\$1,161.41)
TCC	\$983.35	\$0.00	(\$1,222.44)	\$1,075.74	\$1,407.16	\$159.20	\$243.04
	17	18	19	20	21	22	23
ENERGY	\$3,948.39	(\$2,642.00)	(\$325.96)	\$1,387.11	\$3,183.40	\$1,003.63	\$809.84
TRANSMISSION SERVICE	(\$307.61)	(\$644.59)	(\$508.49)	(\$375.71)	(\$294.83)	(\$426.81)	(\$405.51)
UPLIFT	\$65.16	\$3.89	(\$0.15)	(\$1.69)	(\$10.10)	(\$3.90)	\$1.94
RESIDUALS	\$1,171.02	\$4,193.19	\$520.23	(\$398.67)	\$160.92	\$82.99	\$146.36
ANCILLARY SERVICES	(\$443.94)	(\$1,860.57)	(\$2,752.08)	(\$511.74)	(\$1,187.72)	(\$1,134.33)	(\$1,382.70)
TCC	\$168.97	\$1,122.78	\$2,143.98	\$86.30	\$896.33	\$673.03	\$941.24
	24	25	26	27	28	29	30
ENERGY	\$6,120.64	\$3,859.08	(\$69.60)	\$6,883.99	\$2,255.96	(\$60,346.54)	\$2,406.57
TRANSMISSION SERVICE	(\$1,091.55)	(\$1,247.75)	(\$691.85)	(\$515.70)	(\$769.62)	(\$2,702.78)	(\$102.02)
UPLIFT	\$0.80	\$664.57	\$28.45	\$37,639.66	\$1,714.79	\$1,067.34	\$492.22
RESIDUALS	\$2,872.07	(\$163.03)	\$369.31	\$1.85	\$1,048.06	\$3,174.87	(\$367.62)
ANCILLARY SERVICES	(\$2,795.81)	(\$2,379.37)	(\$3,065.62)	\$20,713.63	(\$1,603.11)	\$8,158.00	(\$1,601.75)
TCC	\$1,567.82	\$996.03	\$2,254.78	(\$21,444.63)	\$850.39	(\$11,786.53)	\$1,692.95
	31						
ENERGY	\$1,977.24						
TRANSMISSION SERVICE	(\$275.22)						
UPLIFT	\$20.56						
RESIDUALS	(\$105.61)						
ANCILLARY SERVICES	(\$269.79)						
TCC	\$58.17						



SETTLEMENTS REPORT
August 2020 Settlement Adjustment
January 8, 2020

Initial Settlement – Market Supply Analysis

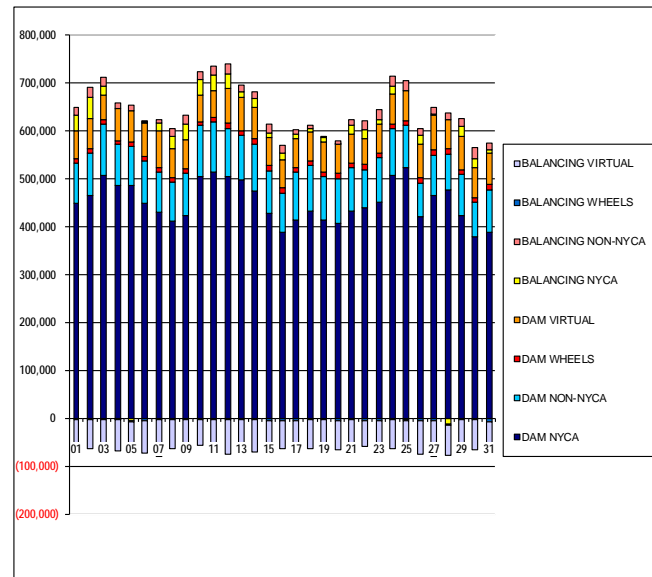
	MONDAY	TUESDAY	WEDNESDAY	THURSDAY	FRIDAY	SATURDAY	SUNDAY
						1	2
DAM NYCA						449,830	466,386
DAM NON-NYCA						83,178	88,915
DAM WHEELS						9,714	8,734
DAM VIRTUAL						59,099	61,920
BALANCING NYCA						27,947	43,371
BALANCING NON-NYCA						14,755	21,316
BALANCING WHEELS						(3,014)	(1,984)
BALANCING VIRTUAL						(59,099)	(61,920)
	3	4	5	6	7	8	9
DAM NYCA	508,337	485,758	485,689	450,307	429,800	412,508	423,269
DAM NON-NYCA	107,432	86,382	83,570	86,647	84,650	80,879	88,337
DAM WHEELS	8,769	8,762	8,932	11,359	9,837	8,804	9,170
DAM VIRTUAL	51,658	66,151	64,033	68,031	76,411	60,328	60,517
BALANCING NYCA	17,807	(1,083)	(5,798)	2,868	14,062	23,832	33,785
BALANCING NON-NYCA	17,441	11,397	11,061	273	6,713	15,926	17,443
BALANCING WHEELS	(1,583)	(1,562)	(2,032)	(4,559)	(2,987)	(2,231)	(2,470)
BALANCING VIRTUAL	(51,658)	(66,151)	(64,033)	(68,031)	(76,411)	(60,328)	(60,517)
	10	11	12	13	14	15	16
DAM NYCA	505,135	515,581	505,469	497,663	475,827	428,961	389,638
DAM NON-NYCA	106,492	103,905	100,885	92,805	97,334	88,863	80,854
DAM WHEELS	8,737	10,053	9,662	9,240	10,441	10,541	10,649
DAM VIRTUAL	55,355	55,959	73,336	71,471	67,057	58,531	59,110
BALANCING NYCA	30,692	31,845	30,572	10,079	17,281	9,596	14,890
BALANCING NON-NYCA	15,690	19,170	19,506	13,806	14,852	18,706	15,627
BALANCING WHEELS	(1,632)	(2,723)	(2,312)	(2,040)	(3,291)	(3,842)	(4,200)
BALANCING VIRTUAL	(55,355)	(55,959)	(73,336)	(71,471)	(67,057)	(58,531)	(59,110)
	17	18	19	20	21	22	23
DAM NYCA	414,648	432,341	414,311	408,369	433,802	440,234	451,917
DAM NON-NYCA	99,597	95,688	90,024	92,397	90,527	79,646	92,217
DAM WHEELS	10,801	10,121	9,986	10,527	9,859	10,842	10,821
DAM VIRTUAL	59,859	60,165	63,266	60,582	59,076	53,903	60,433
BALANCING NYCA	8,101	6,945	9,965	600	19,482	18,676	7,992
BALANCING NON-NYCA	10,299	7,121	1,908	6,592	10,706	19,003	20,714
BALANCING WHEELS	(4,051)	(3,321)	(3,241)	(3,927)	(3,109)	(4,042)	(4,021)
BALANCING VIRTUAL	(59,859)	(60,165)	(63,266)	(60,582)	(59,076)	(53,903)	(60,433)
	24	25	26	27	28	29	30
DAM NYCA	508,278	524,324	422,194	466,757	477,775	423,850	380,063
DAM NON-NYCA	97,637	88,646	70,234	82,411	74,930	86,113	72,279
DAM WHEELS	9,797	9,406	11,007	11,643	10,635	10,019	9,343
DAM VIRTUAL	60,986	62,150	69,976	73,728	60,888	69,916	62,706
BALANCING NYCA	16,880	(1,557)	19,161	1,651	(11,339)	23,449	17,506
BALANCING NON-NYCA	21,738	22,068	13,003	13,471	14,627	14,928	23,484
BALANCING WHEELS	(2,587)	(2,356)	(4,298)	(4,792)	(3,935)	(3,058)	(3,193)
BALANCING VIRTUAL	(60,986)	(62,150)	(69,976)	(73,728)	(60,888)	(69,916)	(62,706)
	31						
DAM NYCA	389,728						
DAM NON-NYCA	87,387						
DAM WHEELS	12,338						
DAM VIRTUAL	64,870						
BALANCING NYCA	7,928						
BALANCING NON-NYCA	12,436						
BALANCING WHEELS	(6,088)						
BALANCING VIRTUAL	(64,870)						



SETTLEMENTS REPORT
August 2020 Settlement Adjustment
January 8, 2020

4-Month Settlement Adjustment – Market Supply Analysis

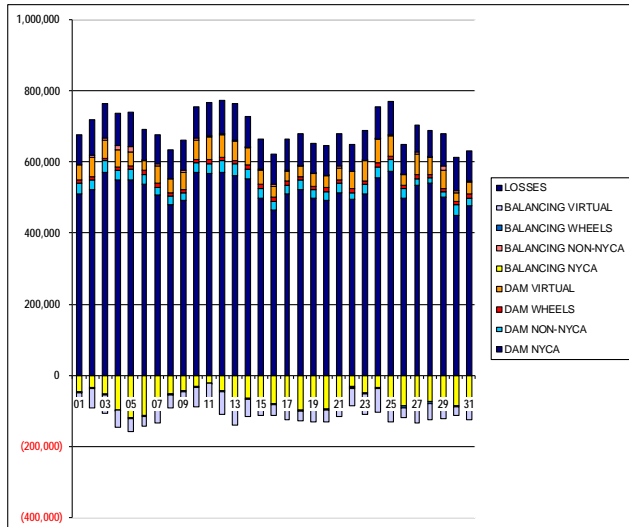
	MONDAY	TUESDAY	WEDNESDAY	THURSDAY	FRIDAY	SATURDAY	SUNDAY
						1	2
DAM NYCA						449,830	466,386
DAM NON-NYCA						83,178	88,915
DAM WHEELS						9,714	8,734
DAM VIRTUAL						59,099	61,920
BALANCING NYCA						31,968	43,709
BALANCING NON-NYCA						14,755	21,316
BALANCING WHEELS						(3,014)	(1,984)
BALANCING VIRTUAL						(59,099)	(61,920)
	3	4	5	6	7	8	9
DAM NYCA	508,337	486,758	485,689	450,307	429,800	412,508	423,269
DAM NON-NYCA	107,432	86,382	83,570	86,647	84,650	80,879	88,337
DAM WHEELS	8,769	8,762	8,932	11,359	9,837	8,804	9,170
DAM VIRTUAL	51,658	66,151	64,033	68,031	76,411	60,328	60,517
BALANCING NYCA	18,759	(939)	(5,454)	2,978	16,518	26,088	34,464
BALANCING NON-NYCA	17,441	11,397	11,061	273	6,713	15,926	17,443
BALANCING WHEELS	(1,583)	(1,562)	(2,032)	(4,559)	(2,987)	(2,231)	(2,470)
BALANCING VIRTUAL	(51,658)	(66,151)	(64,033)	(68,031)	(76,411)	(60,328)	(60,517)
	10	11	12	13	14	15	16
DAM NYCA	505,135	515,581	505,469	497,663	475,827	428,961	389,638
DAM NON-NYCA	106,492	103,905	100,885	92,805	97,334	88,863	80,854
DAM WHEELS	8,737	10,053	9,662	9,240	10,441	10,541	10,649
DAM VIRTUAL	55,355	55,959	73,336	71,471	67,057	58,531	59,110
BALANCING NYCA	32,282	32,137	30,558	10,160	17,283	9,703	14,884
BALANCING NON-NYCA	15,690	19,170	19,506	13,806	14,852	18,706	15,627
BALANCING WHEELS	(1,632)	(2,723)	(2,312)	(2,040)	(3,291)	(3,842)	(4,200)
BALANCING VIRTUAL	(55,355)	(55,959)	(73,336)	(71,471)	(67,057)	(58,531)	(59,110)
	17	18	19	20	21	22	23
DAM NYCA	414,648	432,341	414,311	408,369	433,802	440,234	451,917
DAM NON-NYCA	99,597	95,688	90,024	92,397	90,527	79,646	92,217
DAM WHEELS	10,801	10,121	9,986	10,527	9,859	10,842	10,821
DAM VIRTUAL	59,859	60,165	63,266	60,582	59,076	53,903	60,433
BALANCING NYCA	8,308	6,992	9,943	666	19,652	18,711	8,018
BALANCING NON-NYCA	10,299	7,121	1,908	6,592	10,706	19,003	20,714
BALANCING WHEELS	(4,051)	(3,321)	(3,241)	(3,927)	(3,109)	(4,042)	(4,021)
BALANCING VIRTUAL	(59,859)	(60,165)	(63,266)	(60,582)	(59,076)	(53,903)	(60,433)
	24	25	26	27	28	29	30
DAM NYCA	508,278	524,324	422,194	466,757	477,775	423,850	380,063
DAM NON-NYCA	97,637	88,646	70,234	82,411	74,930	86,113	72,279
DAM WHEELS	9,797	9,406	11,007	11,643	10,635	10,019	9,343
DAM VIRTUAL	60,986	62,150	69,976	73,728	60,888	69,916	62,706
BALANCING NYCA	17,105	(1,402)	19,172	1,987	(11,125)	21,310	17,685
BALANCING NON-NYCA	21,738	22,068	13,003	13,471	14,627	14,928	23,484
BALANCING WHEELS	(2,587)	(2,356)	(4,298)	(4,792)	(3,935)	(3,058)	(3,193)
BALANCING VIRTUAL	(60,986)	(62,150)	(69,976)	(73,728)	(60,888)	(69,916)	(62,706)
	31						
DAM NYCA	389,728						
DAM NON-NYCA	87,387						
DAM WHEELS	12,338						
DAM VIRTUAL	64,870						
BALANCING NYCA	8,050						
BALANCING NON-NYCA	12,436						
BALANCING WHEELS	(6,088)						
BALANCING VIRTUAL	(64,870)						



SETTLEMENTS REPORT
August 2020 Settlement Adjustment
January 8, 2020

Initial Settlement – Market Withdrawals Analysis

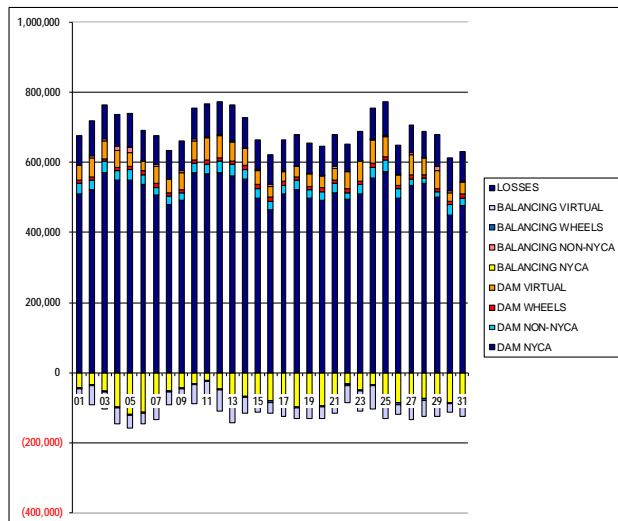
	MONDAY	TUESDAY	WEDNESDAY	THURSDAY	FRIDAY	SATURDAY	SUNDAY
						1	2
DAM NYCA						511,556	520,943
DAM NON-NYCA						27,557	27,687
DAM WHEELS						9,714	8,734
DAM VIRTUAL						41,890	55,397
BALANCING NYCA						(46,760)	(34,623)
BALANCING NON-NYCA						(1,187)	7,832
BALANCING WHEELS						(3,014)	(1,984)
BALANCING VIRTUAL						(41,890)	(55,397)
UFE/LOSSES						84,543	98,150
	3	4	5	6	7	8	9
DAM NYCA	571,297	548,394	550,351	536,024	508,388	478,640	493,004
DAM NON-NYCA	31,313	29,328	30,843	28,416	21,548	25,440	20,986
DAM WHEELS	8,769	8,762	8,932	11,359	9,837	8,804	9,170
DAM VIRTUAL	51,316	47,803	38,088	27,646	48,235	38,323	47,217
BALANCING NYCA	(63,024)	(97,759)	(119,507)	(112,571)	(82,619)	(52,040)	(43,383)
BALANCING NON-NYCA	4,899	11,203	15,240	1,635	6,736	(718)	5,622
BALANCING WHEELS	(1,583)	(1,562)	(2,032)	(4,559)	(2,987)	(2,231)	(2,470)
BALANCING VIRTUAL	(51,316)	(47,803)	(38,088)	(27,646)	(48,235)	(38,323)	(47,217)
UFE/LOSSES	96,532	91,288	97,596	86,591	81,172	81,830	86,604
	10	11	12	13	14	15	16
DAM NYCA	570,245	567,318	571,592	562,315	554,018	499,535	466,350
DAM NON-NYCA	27,253	28,290	32,682	33,776	27,281	26,609	23,875
DAM WHEELS	8,737	10,053	9,862	9,240	10,441	10,541	10,649
DAM VIRTUAL	55,514	64,720	61,921	54,307	47,498	40,171	30,295
BALANCING NYCA	(31,865)	(20,856)	(44,596)	(85,208)	(64,171)	(67,969)	(79,494)
BALANCING NON-NYCA	4,546	4,601	3,380	3,098	1,869	1,584	4,949
BALANCING WHEELS	(1,632)	(2,723)	(2,312)	(2,040)	(3,291)	(3,842)	(4,200)
BALANCING VIRTUAL	(55,514)	(64,720)	(61,921)	(54,307)	(47,498)	(40,171)	(30,295)
UFE/LOSSES	87,831	91,140	93,375	100,371	86,296	86,366	85,329
	17	18	19	20	21	22	23
DAM NYCA	509,183	520,969	497,374	492,547	512,649	496,081	510,483
DAM NON-NYCA	26,461	28,294	25,518	25,159	27,464	18,630	26,213
DAM WHEELS	10,801	10,121	9,986	10,527	9,859	10,842	10,821
DAM VIRTUAL	28,844	28,091	34,630	33,051	33,150	49,081	57,184
BALANCING NYCA	(91,715)	(98,054)	(93,199)	(94,553)	(80,838)	(32,098)	(48,103)
BALANCING NON-NYCA	2,718	1,877	1,724	1,036	5,834	(1,140)	536
BALANCING WHEELS	(4,051)	(3,321)	(3,241)	(3,927)	(3,109)	(4,042)	(4,021)
BALANCING VIRTUAL	(28,844)	(28,091)	(34,630)	(33,051)	(33,150)	(49,081)	(57,184)
UFE/LOSSES	85,997	89,008	84,791	83,769	89,408	76,085	83,711
	24	25	26	27	28	29	30
DAM NYCA	556,210	572,650	499,196	535,848	540,992	499,940	450,936
DAM NON-NYCA	30,782	34,387	25,621	16,780	14,395	16,357	29,755
DAM WHEELS	9,797	9,406	11,007	11,643	10,635	10,019	9,343
DAM VIRTUAL	66,819	55,960	27,481	57,906	46,464	49,997	24,734
BALANCING NYCA	(33,475)	(72,724)	(86,313)	(70,291)	(74,323)	(70,250)	(86,136)
BALANCING NON-NYCA	1,495	3,264	1,994	4,720	1,392	12,515	4,923
BALANCING WHEELS	(2,587)	(2,356)	(4,298)	(4,792)	(3,935)	(3,058)	(3,193)
BALANCING VIRTUAL	(66,819)	(55,960)	(27,481)	(57,906)	(46,464)	(49,997)	(24,734)
UFE/LOSSES	89,522	95,903	84,095	77,233	73,536	89,778	93,853
	31						
DAM NYCA	476,087						
DAM NON-NYCA	22,534						
DAM WHEELS	12,338						
DAM VIRTUAL	33,420						
BALANCING NYCA	(86,803)						
BALANCING NON-NYCA	3,415						
BALANCING WHEELS	(6,088)						
BALANCING VIRTUAL	(33,420)						
UFE/LOSSES	82,246						



SETTLEMENTS REPORT
August 2020 Settlement Adjustment
January 8, 2020

4-Month Settlement Adjustment – Market Withdrawals Analysis

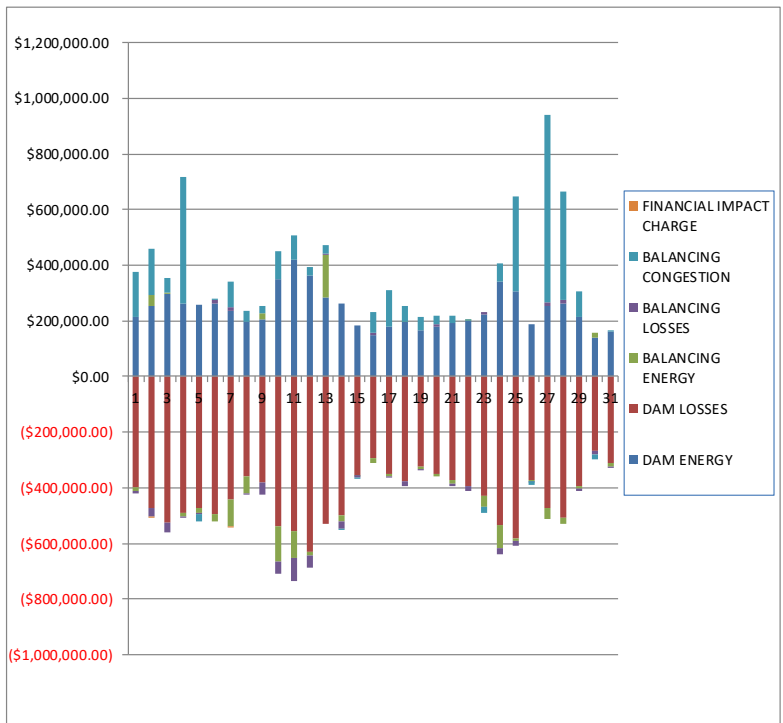
	MONDAY	TUESDAY	WEDNESDAY	THURSDAY	FRIDAY	SATURDAY	SUNDAY
						1	2
DAM NYCA						511,556	520,943
DAM NON-NYCA						27,557	27,687
DAM WHEELS						9,714	8,734
DAM VIRTUAL						41,890	55,397
BALANCING NYCA						(43,415)	(34,701)
BALANCING NON-NYCA						(1,187)	7,832
BALANCING WHEELS						(3,014)	(1,984)
BALANCING VIRTUAL						(41,890)	(55,397)
UFE/LOSSES						85,219	98,566
	3	4	5	6	7	8	9
DAM NYCA	571,297	548,394	550,351	536,024	508,388	478,640	493,004
DAM NON-NYCA	31,313	29,328	30,843	28,416	21,548	25,440	20,986
DAM WHEELS	8,769	8,762	8,932	11,359	9,837	8,804	9,170
DAM VIRTUAL	51,316	47,803	38,088	27,646	48,235	38,323	47,217
BALANCING NYCA	(52,512)	(98,229)	(119,534)	(113,017)	(82,309)	(51,611)	(43,190)
BALANCING NON-NYCA	4,899	11,203	15,240	1,635	6,735	(718)	5,627
BALANCING WHEELS	(1,583)	(1,562)	(2,032)	(4,559)	(2,987)	(2,231)	(2,470)
BALANCING VIRTUAL	(51,316)	(47,803)	(38,088)	(27,646)	(48,235)	(38,323)	(47,217)
UFE/LOSSES	96,972	91,902	97,966	87,148	83,318	83,650	87,091
	10	11	12	13	14	15	16
DAM NYCA	570,245	567,318	571,592	562,315	554,018	499,535	466,350
DAM NON-NYCA	27,253	28,298	32,682	33,776	27,281	26,609	23,875
DAM WHEELS	8,737	10,053	9,662	9,240	10,441	10,541	10,649
DAM VIRTUAL	55,514	64,720	61,921	54,307	47,498	40,171	30,295
BALANCING NYCA	(31,933)	(21,990)	(45,956)	(86,468)	(66,175)	(68,399)	(80,174)
BALANCING NON-NYCA	4,546	4,601	3,380	3,098	1,869	1,584	4,949
BALANCING WHEELS	(1,632)	(2,723)	(2,312)	(2,040)	(3,291)	(3,842)	(4,200)
BALANCING VIRTUAL	(55,514)	(64,720)	(61,921)	(54,307)	(47,498)	(40,171)	(30,295)
UFE/LOSSES	89,489	92,567	94,721	101,704	88,302	86,904	86,003
	17	18	19	20	21	22	23
DAM NYCA	509,183	520,969	497,374	492,547	512,649	496,081	510,483
DAM NON-NYCA	26,461	28,294	25,518	25,159	27,464	18,630	26,213
DAM WHEELS	10,801	10,121	9,986	10,527	9,859	10,842	10,821
DAM VIRTUAL	28,844	28,091	34,630	33,051	33,150	49,081	57,184
BALANCING NYCA	(91,994)	(98,640)	(93,661)	(94,895)	(81,106)	(32,486)	(48,472)
BALANCING NON-NYCA	2,718	1,877	1,724	1,036	5,834	(1,140)	536
BALANCING WHEELS	(4,051)	(3,321)	(3,241)	(3,927)	(3,109)	(4,042)	(4,021)
BALANCING VIRTUAL	(28,844)	(28,091)	(34,630)	(33,051)	(33,150)	(49,081)	(57,184)
UFE/LOSSES	86,484	89,641	85,231	84,177	89,846	76,509	84,105
	24	25	26	27	28	29	30
DAM NYCA	556,210	572,650	499,196	535,848	540,992	499,940	450,936
DAM NON-NYCA	30,782	34,387	25,621	16,780	14,395	16,357	29,755
DAM WHEELS	9,797	9,406	11,007	11,643	10,635	10,019	9,343
DAM VIRTUAL	66,819	55,960	27,481	57,906	46,464	49,997	24,734
BALANCING NYCA	(34,468)	(73,858)	(86,942)	(70,760)	(75,022)	(72,708)	(86,229)
BALANCING NON-NYCA	1,495	3,264	1,994	4,720	1,392	12,515	4,923
BALANCING WHEELS	(2,587)	(2,356)	(4,298)	(4,792)	(3,935)	(3,058)	(3,193)
BALANCING VIRTUAL	(66,819)	(55,960)	(27,481)	(57,906)	(46,464)	(49,997)	(24,734)
UFE/LOSSES	90,740	97,193	84,734	78,883	74,450	90,096	94,126
	31						
DAM NYCA	476,087						
DAM NON-NYCA	22,534						
DAM WHEELS	12,338						
DAM VIRTUAL	33,420						
BALANCING NYCA	(87,054)						
BALANCING NON-NYCA	3,415						
BALANCING WHEELS	(6,088)						
BALANCING VIRTUAL	(33,420)						
UFE/LOSSES	82,618						



SETTLEMENTS REPORT
August 2020 Settlement Adjustment
January 8, 2020

Initial Settlement – Market Residuals Analysis

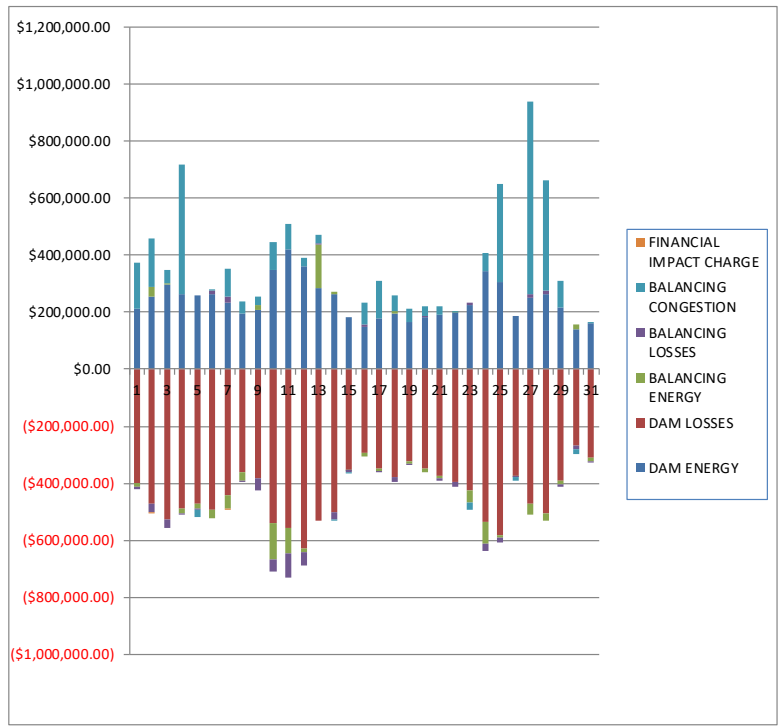
	MONDAY	TUESDAY	WEDNESDAY	THURSDAY	FRIDAY	SATURDAY	SUNDAY
						1	2
DAM ENERGY						\$211,888.97	\$254,159.02
DAM LOSSES						(\$399,933.92)	(\$472,426.52)
BALANCING ENERGY						(\$11,573.24)	\$36,451.78
BALANCING LOSSES						(\$9,079.64)	(\$28,817.76)
BALANCING CONGESTION						\$163,793.35	\$168,153.67
FINANCIAL IMPACT CHARGE						\$0.00	(\$1,142.80)
	3	4	5	6	7	8	9
DAM ENERGY	\$298,232.45	\$262,484.64	\$257,990.92	\$263,650.51	\$234,887.17	\$196,831.76	\$206,503.89
DAM LOSSES	(\$526,846.10)	(\$489,451.22)	(\$471,841.15)	(\$494,722.65)	(\$440,432.97)	(\$359,962.02)	(\$392,797.64)
BALANCING ENERGY	\$2,905.43	(\$15,125.97)	(\$18,145.26)	(\$28,009.06)	(\$98,658.74)	(\$59,892.62)	\$20,240.16
BALANCING LOSSES	(\$31,062.21)	(\$2,961.24)	(\$3,181.08)	\$10,566.24	\$13,888.34	(\$2,872.84)	(\$41,465.98)
BALANCING CONGESTION	\$53,417.08	\$456,288.43	(\$26,663.73)	\$135.31	\$93,143.45	\$40,284.84	\$28,339.34
FINANCIAL IMPACT CHARGE	\$0.00	\$0.00	\$0.00	\$0.00	(\$86.49)	\$0.00	\$0.00
	10	11	12	13	14	15	16
DAM ENERGY	\$348,485.39	\$420,261.14	\$362,339.50	\$284,449.40	\$262,678.20	\$183,459.47	\$146,667.85
DAM LOSSES	(\$538,314.24)	(\$556,524.07)	(\$629,501.00)	(\$531,459.19)	(\$500,278.41)	(\$354,521.86)	(\$293,040.85)
BALANCING ENERGY	(\$128,559.39)	(\$95,835.88)	(\$13,396.91)	\$151,899.40	(\$19,946.15)	(\$413.35)	(\$16,350.01)
BALANCING LOSSES	(\$42,233.25)	(\$82,391.87)	(\$44,997.22)	\$5,413.76	(\$28,334.76)	(\$6,286.55)	\$11,614.59
BALANCING CONGESTION	\$100,620.31	\$87,204.42	\$28,971.40	\$28,985.12	(\$1,643.47)	(\$4,531.07)	\$73,266.75
FINANCIAL IMPACT CHARGE	\$0.00	\$0.00	\$0.00	\$0.00	\$0.00	\$0.00	\$0.00
	17	18	19	20	21	22	23
DAM ENERGY	\$179,843.43	\$197,226.64	\$167,384.72	\$180,484.09	\$191,818.05	\$200,856.81	\$224,626.50
DAM LOSSES	(\$350,829.41)	(\$377,496.21)	(\$324,266.15)	(\$348,475.33)	(\$372,992.36)	(\$395,577.39)	(\$427,176.14)
BALANCING ENERGY	(\$6,601.06)	\$1,163.18	(\$7,523.70)	(\$12,135.03)	(\$11,343.06)	\$503.19	(\$39,964.03)
BALANCING LOSSES	(\$3,127.75)	(\$17,156.06)	(\$4,480.63)	\$7,170.76	(\$8,080.88)	(\$16,347.63)	\$7,237.66
BALANCING CONGESTION	\$131,121.16	\$55,453.61	\$45,192.54	\$32,379.90	\$26,895.57	\$2,602.29	(\$24,106.03)
FINANCIAL IMPACT CHARGE	\$0.00	\$0.00	\$0.00	\$0.00	\$0.00	\$0.00	\$0.00
	24	25	26	27	28	29	30
DAM ENERGY	\$342,233.12	\$307,711.88	\$187,898.81	\$252,553.76	\$261,917.40	\$214,334.46	\$140,710.94
DAM LOSSES	(\$534,360.02)	(\$582,871.20)	(\$373,175.78)	(\$472,628.64)	(\$507,428.89)	(\$392,760.02)	(\$268,470.73)
BALANCING ENERGY	(\$80,656.86)	(\$6,168.84)	(\$1,082.20)	(\$38,032.23)	(\$22,968.34)	(\$11,942.43)	\$14,803.50
BALANCING LOSSES	(\$24,262.51)	(\$20,043.25)	(\$3,870.04)	\$12,345.72	\$14,421.14	(\$7,982.62)	(\$11,804.34)
BALANCING CONGESTION	\$66,148.53	\$340,364.74	(\$12,746.28)	\$673,418.27	\$387,059.50	\$93,604.97	(\$17,028.86)
FINANCIAL IMPACT CHARGE	\$0.00	\$0.00	\$0.00	\$0.00	\$0.00	\$0.00	\$0.00
	31						
DAM ENERGY	\$163,249.01						
DAM LOSSES	(\$312,532.73)						
BALANCING ENERGY	(\$11,075.74)						
BALANCING LOSSES	(\$929.70)						
BALANCING CONGESTION	\$1,388.50						
FINANCIAL IMPACT CHARGE	\$0.00						



SETTLEMENTS REPORT
August 2020 Settlement Adjustment
January 8, 2020

4-Month Settlement Adjustment – Market Residuals Analysis

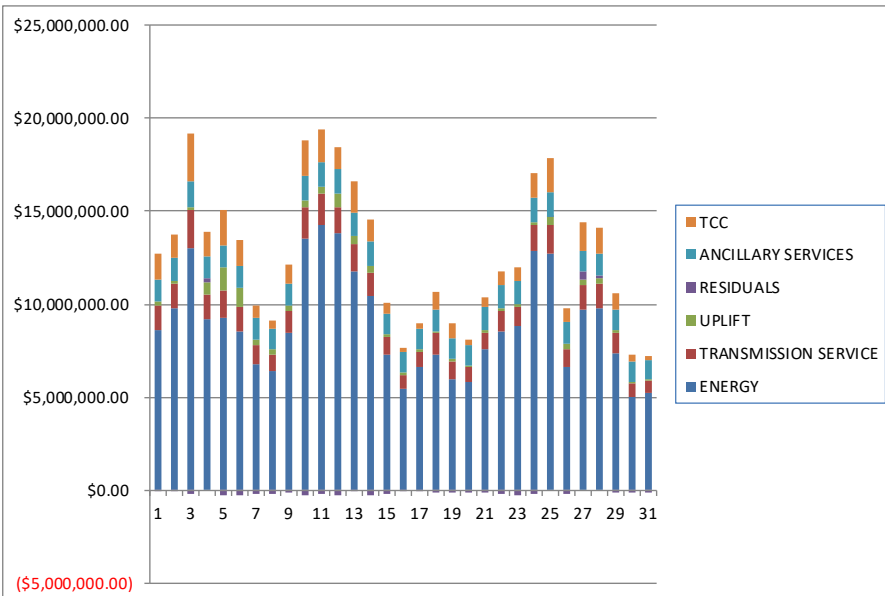
	MONDAY	TUESDAY	WEDNESDAY	THURSDAY	FRIDAY	SATURDAY	SUNDAY
						1	2
DAM ENERGY						\$211,888.97	\$254,159.02
DAM LOSSES						(\$399,933.93)	(\$472,426.52)
BALANCING ENERGY						(\$11,310.13)	\$36,507.06
BALANCING LOSSES						(\$9,982.45)	(\$28,756.80)
BALANCING CONGESTION						\$161,495.53	\$168,960.67
FINANCIAL IMPACT CHARGE						\$0.00	(\$1,142.74)
	3	4	5	6	7	8	9
DAM ENERGY	\$298,232.44	\$262,484.63	\$257,990.93	\$263,650.52	\$234,887.17	\$196,831.76	\$206,503.89
DAM LOSSES	(\$526,846.11)	(\$489,451.22)	(\$471,841.14)	(\$494,722.65)	(\$440,432.97)	(\$359,962.02)	(\$382,797.63)
BALANCING ENERGY	\$3,343.34	(\$14,854.64)	(\$17,599.35)	(\$28,025.35)	(\$48,875.08)	(\$29,706.14)	\$19,330.73
BALANCING LOSSES	(\$31,322.40)	(\$2,926.02)	(\$3,087.81)	\$10,565.15	\$18,749.92	(\$20.57)	(\$41,648.04)
BALANCING CONGESTION	\$47,655.00	\$455,713.85	(\$25,449.86)	\$125.70	\$100,093.41	\$40,322.34	\$28,589.53
FINANCIAL IMPACT CHARGE	\$0.00	\$0.00	\$0.00	\$0.00	(\$86.53)	\$0.00	\$0.00
	10	11	12	13	14	15	16
DAM ENERGY	\$348,485.38	\$420,261.15	\$362,339.50	\$284,449.40	\$262,678.20	\$183,459.47	\$146,667.85
DAM LOSSES	(\$538,314.24)	(\$556,524.07)	(\$629,501.00)	(\$531,459.19)	(\$500,278.41)	(\$354,521.86)	(\$293,040.84)
BALANCING ENERGY	(\$127,776.04)	(\$91,735.33)	(\$13,237.08)	\$152,490.49	\$9,988.93	(\$250.43)	(\$13,297.67)
BALANCING LOSSES	(\$43,377.72)	(\$81,902.66)	(\$44,976.48)	\$5,495.37	(\$25,959.78)	(\$6,277.93)	\$11,885.52
BALANCING CONGESTION	\$99,295.70	\$88,977.97	\$28,672.56	\$29,215.15	(\$1,732.95)	(\$4,521.16)	\$73,286.42
FINANCIAL IMPACT CHARGE	\$0.00	\$0.00	\$0.00	\$0.00	\$0.00	\$0.00	\$0.00
	17	18	19	20	21	22	23
DAM ENERGY	\$179,843.43	\$197,226.63	\$167,384.71	\$180,484.09	\$191,818.05	\$200,856.80	\$224,626.50
DAM LOSSES	(\$350,829.41)	(\$377,496.21)	(\$324,266.15)	(\$348,475.33)	(\$372,992.36)	(\$395,577.39)	(\$427,176.15)
BALANCING ENERGY	(\$5,647.51)	\$4,509.63	(\$7,132.33)	(\$12,479.54)	(\$11,096.94)	\$595.09	(\$39,833.39)
BALANCING LOSSES	(\$3,029.62)	(\$16,822.32)	(\$4,451.19)	\$7,139.12	(\$8,045.60)	(\$16,331.87)	\$7,255.08
BALANCING CONGESTION	\$131,240.50	\$55,966.62	\$45,291.97	\$32,357.38	\$26,775.09	\$2,577.63	(\$24,107.72)
FINANCIAL IMPACT CHARGE	\$0.00	\$0.00	\$0.00	\$0.00	\$0.00	\$0.00	\$0.00
	24	25	26	27	28	29	30
DAM ENERGY	\$342,233.12	\$307,711.87	\$187,898.82	\$252,553.76	\$261,917.40	\$214,334.46	\$140,710.94
DAM LOSSES	(\$534,360.02)	(\$582,871.21)	(\$373,175.77)	(\$472,628.63)	(\$507,428.89)	(\$392,760.02)	(\$268,470.73)
BALANCING ENERGY	(\$77,949.62)	(\$6,167.59)	(\$754.92)	(\$37,836.78)	(\$22,158.96)	(\$11,558.69)	\$15,077.88
BALANCING LOSSES	(\$24,051.73)	(\$20,023.99)	(\$3,844.10)	\$12,380.73	\$14,344.53	(\$6,629.63)	(\$12,276.70)
BALANCING CONGESTION	\$66,102.58	\$340,181.22	(\$12,730.21)	\$673,189.65	\$387,374.79	\$95,043.11	(\$17,198.50)
FINANCIAL IMPACT CHARGE	\$0.00	\$0.00	\$0.00	\$0.00	\$0.00	\$0.00	\$0.00
	31						
DAM ENERGY		\$163,249.01					
DAM LOSSES		(\$312,532.74)					
BALANCING ENERGY		(\$11,189.15)					
BALANCING LOSSES		(\$921.74)					
BALANCING CONGESTION		\$1,388.35					
FINANCIAL IMPACT CHARGE		\$0.00					



SETTLEMENTS REPORT
August 2020 Settlement Adjustment
January 8, 2020

Initial Settlement – Market Costs Analysis

	MONDAY	TUESDAY	WEDNESDAY	THURSDAY	FRIDAY	SATURDAY	SUNDAY
						1	2
ENERGY						\$8,632,128.59	\$9,812,964.98
TRANSMISSION SERVICE						\$1,316,576.23	\$1,305,278.15
UPLIFT						\$215,466.81	\$110,753.58
RESIDUALS						(\$44,904.48)	(\$43,622.61)
ANCILLARY SERVICES						\$1,161,508.28	\$1,275,959.41
TCC						\$1,419,474.14	\$1,228,509.95
	3	4	5	6	7	8	9
ENERGY	\$12,998,650.71	\$9,183,791.54	\$9,297,960.23	\$8,542,380.98	\$6,782,052.33	\$6,405,862.20	\$8,485,784.33
TRANSMISSION SERVICE	\$2,058,372.24	\$1,317,686.65	\$1,472,607.56	\$1,304,905.07	\$992,389.84	\$860,677.74	\$1,152,484.65
UPLIFT	\$186,034.18	\$701,952.89	\$1,197,707.21	\$1,016,043.17	\$343,497.76	\$288,476.34	\$277,681.43
RESIDUALS	(\$203,353.35)	\$211,234.64	(\$261,840.30)	(\$248,379.65)	(\$197,259.24)	(\$185,610.88)	(\$169,180.23)
ANCILLARY SERVICES	\$1,343,187.11	\$1,192,147.59	\$1,176,015.11	\$1,159,041.26	\$1,132,065.36	\$1,128,236.67	\$1,195,896.16
TCC	\$2,596,193.68	\$1,294,726.45	\$1,943,170.70	\$1,448,312.38	\$687,624.87	\$452,293.96	\$1,004,469.69
	10	11	12	13	14	15	16
ENERGY	\$13,544,334.12	\$14,274,776.66	\$13,848,602.49	\$11,731,818.30	\$10,443,727.06	\$7,251,191.33	\$5,455,029.80
TRANSMISSION SERVICE	\$1,702,792.52	\$1,672,791.56	\$1,400,862.24	\$1,472,357.88	\$1,239,298.65	\$949,356.14	\$753,100.60
UPLIFT	\$337,416.02	\$337,553.43	\$678,803.95	\$442,543.50	\$380,433.84	\$161,299.08	\$133,473.54
RESIDUALS	(\$260,001.18)	(\$227,286.26)	(\$296,584.23)	(\$60,711.51)	(\$287,524.59)	(\$182,293.36)	(\$77,841.67)
ANCILLARY SERVICES	\$1,335,461.63	\$1,388,605.08	\$1,336,780.80	\$1,294,818.60	\$1,304,205.60	\$1,147,723.25	\$1,062,493.32
TCC	\$1,906,136.79	\$1,721,832.43	\$1,168,368.75	\$1,635,375.98	\$1,168,083.22	\$531,559.46	\$212,557.86
	17	18	19	20	21	22	23
ENERGY	\$6,597,261.78	\$7,312,430.08	\$5,941,493.78	\$5,840,079.48	\$7,556,812.73	\$8,509,792.52	\$8,789,367.68
TRANSMISSION SERVICE	\$811,343.08	\$1,127,420.51	\$946,190.90	\$797,324.69	\$934,218.72	\$1,097,828.72	\$1,094,002.43
UPLIFT	\$148,453.72	\$83,432.40	\$140,683.59	\$78,808.57	\$148,102.53	\$181,797.71	\$104,205.68
RESIDUALS	(\$49,593.63)	(\$140,808.84)	(\$123,693.22)	(\$140,575.61)	(\$173,702.68)	(\$207,962.73)	(\$259,382.04)
ANCILLARY SERVICES	\$1,142,564.95	\$1,174,988.56	\$1,103,827.74	\$1,082,448.31	\$1,187,753.47	\$1,220,118.35	\$1,230,745.83
TCC	\$268,747.93	\$994,318.10	\$835,387.40	\$294,016.86	\$531,339.61	\$757,241.66	\$790,151.80
	24	25	26	27	28	29	30
ENERGY	\$12,846,000.30	\$12,735,985.88	\$6,646,666.58	\$9,678,963.34	\$9,776,370.62	\$7,349,542.42	\$5,018,056.49
TRANSMISSION SERVICE	\$1,397,438.82	\$1,516,947.13	\$915,450.92	\$1,356,525.14	\$1,344,802.14	\$1,090,231.97	\$747,565.25
UPLIFT	\$181,772.33	\$415,866.11	\$338,297.01	\$269,613.64	\$257,459.80	\$137,178.87	\$78,324.56
RESIDUALS	(\$230,897.74)	\$38,993.33	(\$202,975.49)	\$427,656.88	\$133,000.81	(\$104,745.64)	(\$141,789.49)
ANCILLARY SERVICES	\$1,321,678.99	\$1,334,859.63	\$1,115,355.10	\$1,161,906.67	\$1,209,351.05	\$1,158,680.63	\$1,050,115.18
TCC	\$1,335,483.42	\$1,830,314.98	\$752,846.29	\$1,481,408.36	\$1,386,523.02	\$856,545.18	\$362,062.88
	31						
ENERGY	\$5,198,559.93						
TRANSMISSION SERVICE	\$701,309.31						
UPLIFT	\$45,186.92						
RESIDUALS	(\$159,900.66)						
ANCILLARY SERVICES	\$1,074,130.41						
TCC	\$160,753.14						



SETTLEMENTS REPORT
August 2020 Settlement Adjustment
January 8, 2020

4-Month Settlement Adjustment – Market Costs Analysis

	MONDAY	TUESDAY	WEDNESDAY	THURSDAY	FRIDAY	SATURDAY	SUNDAY
						1	2
ENERGY						\$8,826,807.04	\$9,825,242.66
TRANSMISSION SERVICE						\$1,320,255.41	\$1,305,192.60
UPLIFT						\$216,729.29	\$111,065.99
RESIDUALS						(\$47,842.01)	(\$42,699.31)
ANCILLARY SERVICES						\$1,166,775.49	\$1,275,433.92
TCC						\$1,419,569.95	\$1,229,017.75
	3	4	5	6	7	8	9
ENERGY	\$13,034,880.19	\$9,189,144.22	\$9,304,385.73	\$8,544,422.35	\$6,773,429.25	\$6,434,584.20	\$8,516,152.95
TRANSMISSION SERVICE	\$2,058,934.83	\$1,317,169.81	\$1,472,578.52	\$1,304,414.29	\$992,731.08	\$861,157.57	\$1,152,696.96
UPLIFT	\$188,519.27	\$702,716.19	\$1,199,535.37	\$1,017,749.01	\$353,685.41	\$288,476.35	\$280,597.25
RESIDUALS	(\$208,937.73)	\$210,966.60	(\$259,987.23)	(\$248,406.63)	(\$135,664.08)	(\$152,534.63)	(\$170,021.52)
ANCILLARY SERVICES	\$1,342,277.36	\$1,191,769.94	\$1,171,978.65	\$1,156,500.63	\$1,133,747.95	\$1,128,960.52	\$1,195,765.35
TCC	\$2,598,033.12	\$1,294,551.42	\$1,947,254.17	\$1,450,322.19	\$686,584.14	\$452,397.23	\$1,005,059.33
	10	11	12	13	14	15	16
ENERGY	\$13,636,539.57	\$14,283,626.43	\$13,848,472.08	\$11,733,470.57	\$10,411,165.25	\$7,253,097.72	\$5,451,668.44
TRANSMISSION SERVICE	\$1,702,718.15	\$1,671,543.77	\$1,399,365.91	\$1,470,981.34	\$1,237,093.71	\$948,882.95	\$752,352.86
UPLIFT	\$337,693.55	\$335,950.21	\$678,805.33	\$442,543.47	\$380,765.03	\$161,301.33	\$133,473.55
RESIDUALS	(\$261,686.92)	(\$220,922.94)	(\$296,702.50)	(\$59,808.78)	(\$255,304.01)	(\$182,111.91)	(\$74,498.72)
ANCILLARY SERVICES	\$1,334,869.30	\$1,387,211.51	\$1,336,277.19	\$1,292,177.32	\$1,299,902.17	\$1,147,055.29	\$1,061,331.91
TCC	\$1,907,120.14	\$1,721,832.43	\$1,167,146.31	\$1,636,451.72	\$1,169,490.38	\$531,718.66	\$212,800.90
	17	18	19	20	21	22	23
ENERGY	\$6,601,210.17	\$7,309,788.08	\$5,941,167.82	\$5,841,466.59	\$7,559,996.13	\$8,510,796.15	\$8,790,177.52
TRANSMISSION SERVICE	\$811,035.47	\$1,126,775.92	\$945,682.41	\$796,948.98	\$933,923.89	\$1,097,401.91	\$1,093,596.92
UPLIFT	\$148,518.88	\$83,436.29	\$140,683.44	\$78,806.88	\$148,092.43	\$181,793.81	\$104,207.62
RESIDUALS	(\$48,422.61)	(\$136,615.65)	(\$123,172.99)	(\$140,974.28)	(\$173,541.76)	(\$207,879.74)	(\$259,235.68)
ANCILLARY SERVICES	\$1,142,121.01	\$1,173,127.99	\$1,101,075.66	\$1,081,936.57	\$1,186,565.75	\$1,218,984.02	\$1,229,363.13
TCC	\$268,916.90	\$995,440.88	\$837,531.38	\$294,103.16	\$532,235.94	\$757,914.69	\$791,093.04
	24	25	26	27	28	29	30
ENERGY	\$12,852,120.94	\$12,739,844.96	\$6,646,596.98	\$9,685,847.33	\$9,778,626.58	\$7,289,195.88	\$5,020,463.06
TRANSMISSION SERVICE	\$1,396,347.27	\$1,515,699.38	\$914,759.07	\$1,356,009.44	\$1,344,032.52	\$1,087,529.19	\$747,463.23
UPLIFT	\$181,773.13	\$416,530.68	\$338,325.46	\$307,253.30	\$259,174.59	\$138,246.21	\$78,816.78
RESIDUALS	(\$228,025.67)	\$38,830.30	(\$202,606.18)	\$427,658.73	\$134,048.87	(\$101,570.77)	(\$142,157.11)
ANCILLARY SERVICES	\$1,318,883.18	\$1,332,480.26	\$1,112,289.48	\$1,182,620.30	\$1,207,747.94	\$1,166,838.63	\$1,048,513.43
TCC	\$1,337,051.24	\$1,831,311.01	\$755,101.07	\$1,459,963.73	\$1,387,373.41	\$844,758.65	\$363,755.83
	31						
ENERGY	\$5,200,537.17						
TRANSMISSION SERVICE	\$701,034.09						
UPLIFT	\$45,207.48						
RESIDUALS	(\$160,006.27)						
ANCILLARY SERVICES	\$1,073,860.62						
TCC	\$160,811.31						

