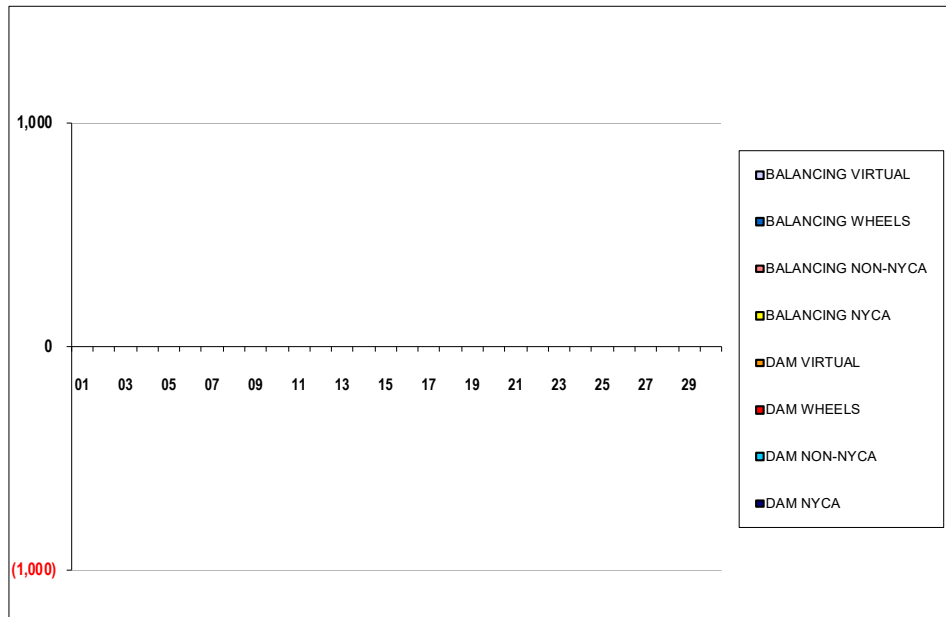


SETTLEMENTS REPORT  
November 2021 Close-Out Settlement  
August 5, 2022

**Close-Out Settlement – Market Supply Delta Analysis**

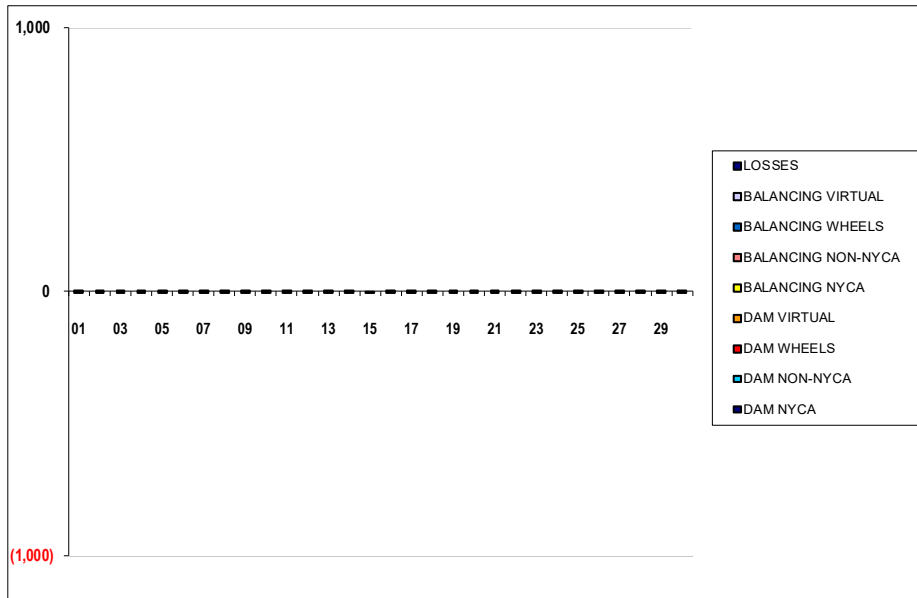
	MONDAY	TUESDAY	WEDNESDAY	THURSDAY	FRIDAY	SATURDAY	SUNDAY
	1	2	3	4	5	6	7
DAM NYCA	0	0	0	0	0	0	0
DAM NON-NYCA	0	0	0	0	0	0	0
DAM WHEELS	0	0	0	0	0	0	0
DAM VIRTUAL	0	0	0	0	0	0	0
BALANCING NYCA	0	0	0	0	0	0	0
BALANCING NON-NYCA	0	0	0	0	0	0	0
BALANCING WHEELS	0	0	0	0	0	0	0
BALANCING VIRTUAL	0	0	0	0	0	0	0
	8	9	10	11	12	13	14
DAM NYCA	0	0	0	0	0	0	0
DAM NON-NYCA	0	0	0	0	0	0	0
DAM WHEELS	0	0	0	0	0	0	0
DAM VIRTUAL	0	0	0	0	0	0	0
BALANCING NYCA	0	0	0	0	0	0	0
BALANCING NON-NYCA	0	0	0	0	0	0	0
BALANCING WHEELS	0	0	0	0	0	0	0
BALANCING VIRTUAL	0	0	0	0	0	0	0
	15	16	17	18	19	20	21
DAM NYCA	0	0	0	0	0	0	0
DAM NON-NYCA	0	0	0	0	0	0	0
DAM WHEELS	0	0	0	0	0	0	0
DAM VIRTUAL	0	0	0	0	0	0	0
BALANCING NYCA	0	0	0	0	0	0	0
BALANCING NON-NYCA	0	0	0	0	0	0	0
BALANCING WHEELS	0	0	0	0	0	0	0
BALANCING VIRTUAL	0	0	0	0	0	0	0
	22	23	24	25	26	27	28
DAM NYCA	0	0	0	0	0	0	0
DAM NON-NYCA	0	0	0	0	0	0	0
DAM WHEELS	0	0	0	0	0	0	0
DAM VIRTUAL	0	0	0	0	0	0	0
BALANCING NYCA	0	0	0	0	0	0	0
BALANCING NON-NYCA	0	0	0	0	0	0	0
BALANCING WHEELS	0	0	0	0	0	0	0
BALANCING VIRTUAL	0	0	0	0	0	0	0
	29	30					
DAM NYCA	0	0					
DAM NON-NYCA	0	0					
DAM WHEELS	0	0					
DAM VIRTUAL	0	0					
BALANCING NYCA	0	0					
BALANCING NON-NYCA	0	0					
BALANCING WHEELS	0	0					
BALANCING VIRTUAL	0	0					



SETTLEMENTS REPORT  
November 2021 Close-Out Settlement  
August 5, 2022

**Close-Out Settlement – Market Withdrawals Delta Analysis**

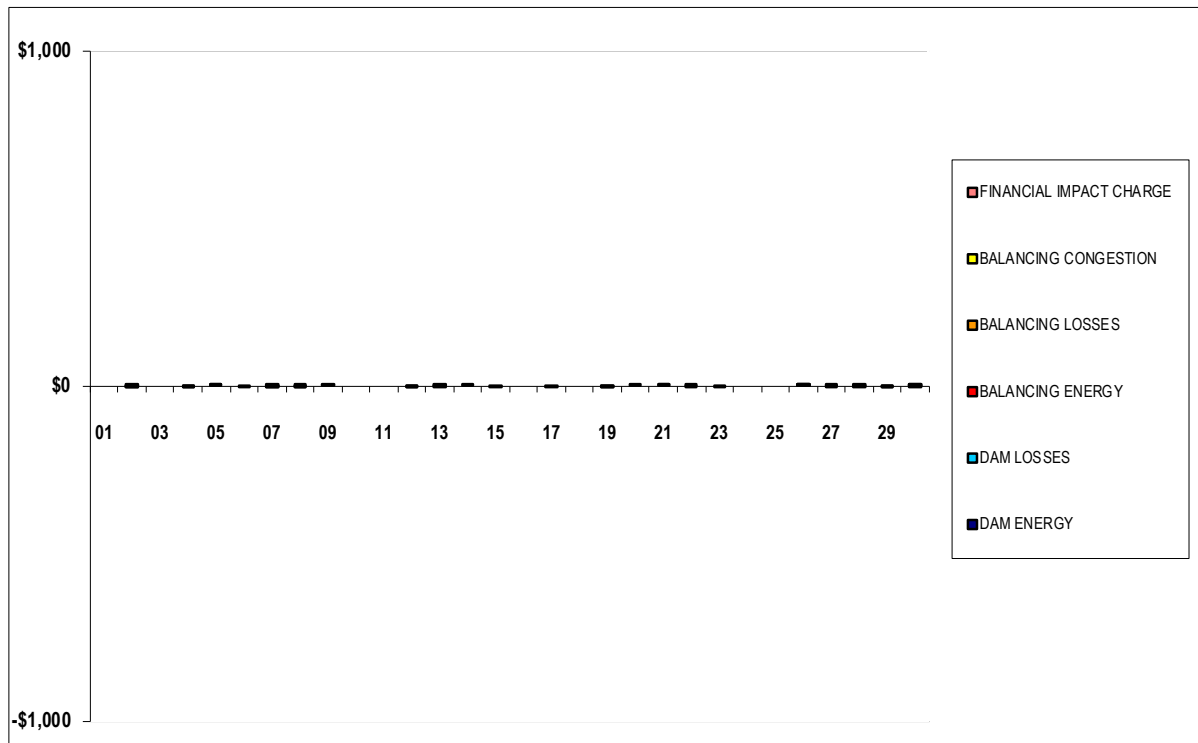
	MONDAY	TUESDAY	WEDNESDAY	THURSDAY	FRIDAY	SATURDAY	SUNDAY
	1	2	3	4	5	6	7
DAM NYCA	0	0	0	0	0	0	0
DAM NON-NYCA	0	0	0	0	0	0	0
DAM WHEELS	0	0	0	0	0	0	0
DAM VIRTUAL	0	0	0	0	0	0	0
BALANCING NYCA	0	(0)	(0)	0	(0)	(0)	0
BALANCING NON-NYCA	0	0	0	0	0	0	0
BALANCING WHEELS	0	0	0	0	0	0	0
BALANCING VIRTUAL	0	0	0	0	0	0	0
UFE/LOSSES	(0)	0	0	(0)	0	0	(0)
	8	9	10	11	12	13	14
DAM NYCA	0	0	0	0	0	0	0
DAM NON-NYCA	0	0	0	0	0	0	0
DAM WHEELS	0	0	0	0	0	0	0
DAM VIRTUAL	0	0	0	0	0	0	0
BALANCING NYCA	0	0	0	(0)	(0)	0	0
BALANCING NON-NYCA	0	0	0	0	0	0	0
BALANCING WHEELS	0	0	0	0	0	0	0
BALANCING VIRTUAL	0	0	0	0	0	0	0
UFE/LOSSES	(0)	(0)	(0)	0	0	(0)	(0)
	15	16	17	18	19	20	21
DAM NYCA	0	0	0	0	0	0	0
DAM NON-NYCA	0	0	0	0	0	0	0
DAM WHEELS	0	0	0	0	0	0	0
DAM VIRTUAL	0	0	0	0	0	0	0
BALANCING NYCA	0	(0)	0	0	0	(0)	0
BALANCING NON-NYCA	0	0	0	0	0	0	0
BALANCING WHEELS	0	0	0	0	0	0	0
BALANCING VIRTUAL	0	0	0	0	0	0	0
UFE/LOSSES	(0)	0	(0)	(0)	(0)	0	(0)
	22	23	24	25	26	27	28
DAM NYCA	0	0	0	0	0	0	0
DAM NON-NYCA	0	0	0	0	0	0	0
DAM WHEELS	0	0	0	0	0	0	0
DAM VIRTUAL	0	0	0	0	0	0	0
BALANCING NYCA	0	(0)	0	(0)	(0)	(0)	(0)
BALANCING NON-NYCA	0	0	0	0	0	0	0
BALANCING WHEELS	0	0	0	0	0	0	0
BALANCING VIRTUAL	0	0	0	0	0	0	0
UFE/LOSSES	(0)	0	(0)	0	0	0	0
	29	30					
DAM NYCA	0	0					
DAM NON-NYCA	0	0					
DAM WHEELS	0	0					
DAM VIRTUAL	0	0					
BALANCING NYCA	0	0					
BALANCING NON-NYCA	0	0					
BALANCING WHEELS	0	0					
BALANCING VIRTUAL	0	0					
UFE/LOSSES	(0)	(0)					



SETTLEMENTS REPORT  
November 2021 Close-Out Settlement  
August 5, 2022

**Close-Out Settlement – Market Residuals Delta Analysis**

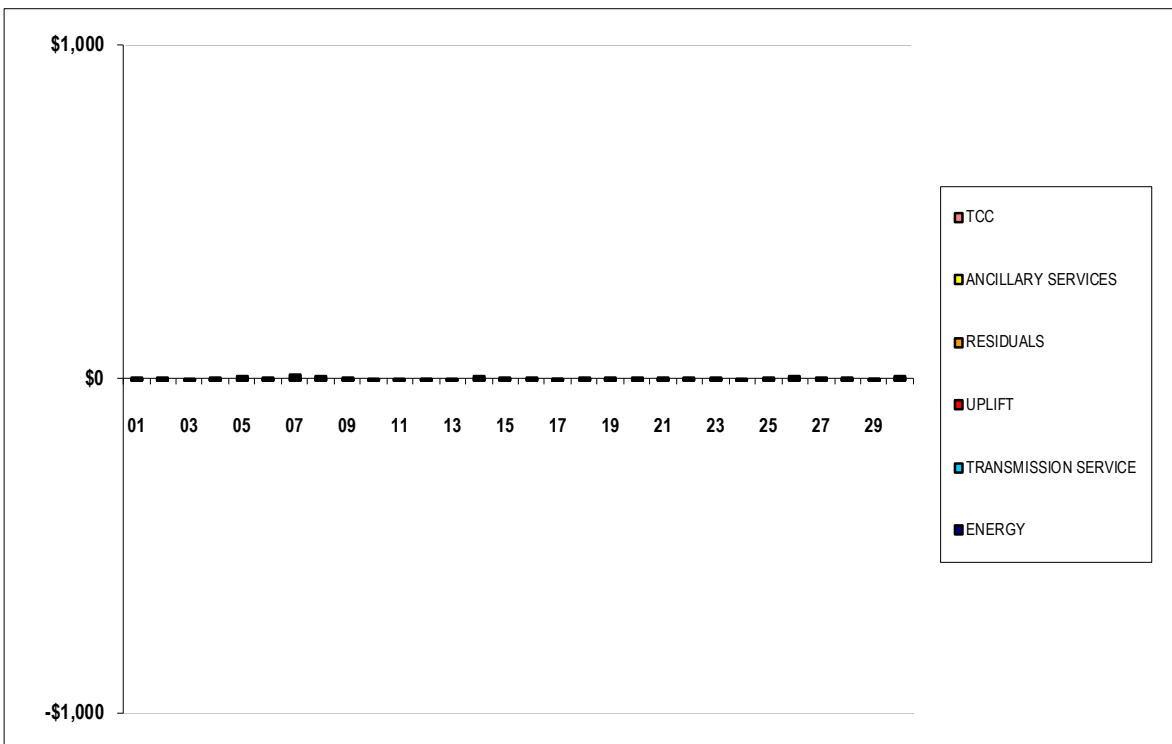
	MONDAY	TUESDAY	WEDNESDAY	THURSDAY	FRIDAY	SATURDAY	SUNDAY
	1	2	3	4	5	6	7
DAM ENERGY	\$0.00	\$0.00	\$0.00	\$0.00	\$0.00	\$0.00	\$0.00
DAM LOSSES	\$0.00	\$0.01	\$0.00	(\$0.01)	\$0.00	\$0.00	\$0.00
BALANCING ENERGY	\$0.00	\$0.00	\$0.00	\$0.00	\$0.00	(\$0.01)	(\$0.01)
BALANCING LOSSES	\$0.00	(\$0.01)	\$0.00	\$0.00	\$0.01	\$0.00	\$0.01
BALANCING CONGESTION	\$0.00	(\$0.01)	\$0.00	(\$0.01)	\$0.01	\$0.00	\$0.00
FINANCIAL IMPACT CHARGE	\$0.00	\$0.00	\$0.00	\$0.00	\$0.00	\$0.00	(\$0.04)
	8	9	10	11	12	13	14
DAM ENERGY	(\$0.01)	\$0.01	\$0.00	\$0.00	(\$0.01)	(\$0.01)	\$0.01
DAM LOSSES	(\$0.01)	\$0.00	\$0.00	\$0.00	\$0.00	\$0.00	\$0.00
BALANCING ENERGY	\$0.00	\$0.00	\$0.00	\$0.00	(\$0.01)	\$0.00	\$0.00
BALANCING LOSSES	\$0.00	\$0.00	\$0.00	\$0.00	\$0.00	\$0.00	\$0.00
BALANCING CONGESTION	\$0.00	\$0.00	\$0.00	\$0.00	\$0.00	\$0.01	\$0.00
FINANCIAL IMPACT CHARGE	\$0.11	\$0.00	\$0.00	\$0.00	\$0.00	\$0.00	\$0.00
	15	16	17	18	19	20	21
DAM ENERGY	(\$0.01)	\$0.00	\$0.00	\$0.00	(\$0.01)	\$0.00	\$0.01
DAM LOSSES	\$0.00	\$0.00	(\$0.01)	\$0.00	\$0.00	\$0.01	\$0.01
BALANCING ENERGY	\$0.00	\$0.00	\$0.00	\$0.00	\$0.00	\$0.00	\$0.00
BALANCING LOSSES	\$0.00	\$0.00	\$0.00	\$0.00	\$0.00	\$0.00	\$0.00
BALANCING CONGESTION	\$0.00	\$0.00	\$0.00	\$0.00	(\$0.01)	\$0.00	\$0.00
FINANCIAL IMPACT CHARGE	\$0.00	\$0.00	\$0.00	\$0.00	\$0.00	\$0.00	\$0.00
	22	23	24	25	26	27	28
DAM ENERGY	\$0.01	\$0.00	\$0.00	\$0.00	\$0.01	(\$0.01)	\$0.00
DAM LOSSES	(\$0.01)	(\$0.01)	\$0.00	\$0.00	\$0.01	\$0.01	\$0.01
BALANCING ENERGY	\$0.00	\$0.00	\$0.00	\$0.00	\$0.00	\$0.00	\$0.00
BALANCING LOSSES	\$0.00	\$0.00	\$0.00	\$0.00	\$0.01	\$0.00	\$0.00
BALANCING CONGESTION	\$0.00	\$0.00	\$0.00	\$0.00	\$0.00	\$0.00	\$0.00
FINANCIAL IMPACT CHARGE	\$0.00	\$0.00	\$0.00	\$0.00	\$0.00	\$0.00	(\$0.03)
	29	30					
DAM ENERGY	(\$0.01)	\$0.00					
DAM LOSSES	\$0.00	\$0.01					
BALANCING ENERGY	\$0.00	\$0.00					
BALANCING LOSSES	(\$0.01)	(\$0.01)					
BALANCING CONGESTION	\$0.00	\$0.01					
FINANCIAL IMPACT CHARGE	\$0.00	\$0.00					



SETTLEMENTS REPORT  
November 2021 Close-Out Settlement  
August 5, 2022

**Close-Out Settlement – Market Costs Delta Analysis**

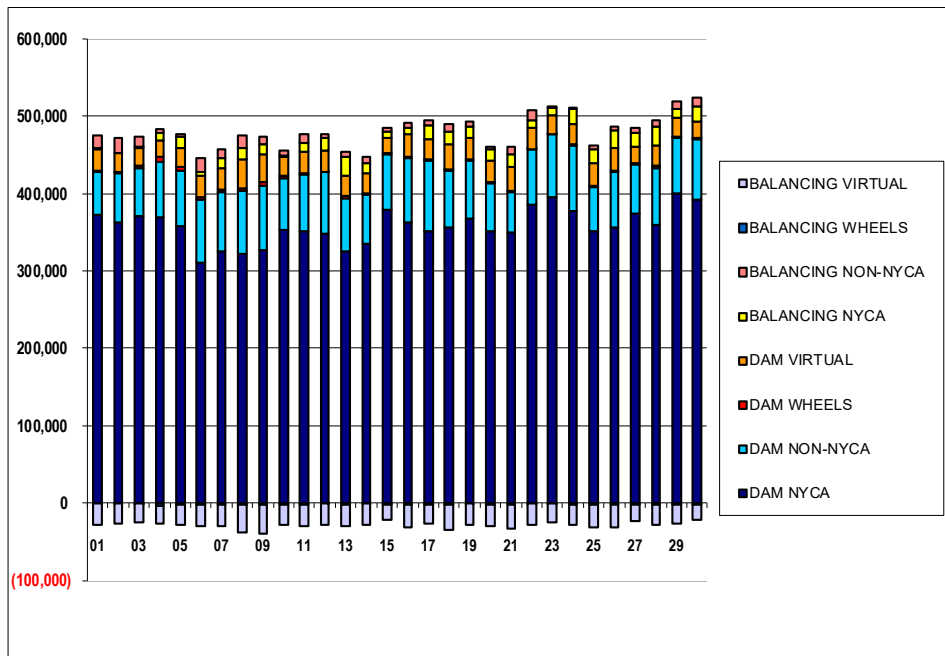
	MONDAY	TUESDAY	WEDNESDAY	THURSDAY	FRIDAY	SATURDAY	SUNDAY	
	1	2	3	4	5	6	7	
ENERGY	\$0.11	\$0.22	(\$0.23)	(\$0.23)	\$0.44	\$0.12	\$0.24	
TRANSMISSION SERVICE	(\$1.27)	(\$1.35)	(\$1.40)	(\$1.41)	(\$1.37)	(\$1.26)	\$5.02	
UPLIFT	(\$0.01)	\$0.00	\$0.00	\$0.01	\$0.00	\$0.00	(\$0.01)	
RESIDUALS	\$0.00	(\$0.01)	\$0.00	(\$0.02)	\$0.02	(\$0.01)	(\$0.04)	
ANCILLARY SERVICES	(\$0.74)	(\$0.81)	(\$0.85)	(\$0.84)	(\$0.85)	(\$0.77)	\$3.00	
TCC	\$0.00	\$0.00	\$0.00	\$0.00	\$0.00	\$0.00	\$0.00	
	8	9	10	11	12	13	14	
ENERGY	\$0.14	(\$0.03)	(\$0.24)	(\$0.06)	(\$0.43)	(\$0.20)	\$0.31	
TRANSMISSION SERVICE	(\$1.37)	(\$1.41)	(\$1.39)	(\$1.30)	(\$1.25)	(\$1.22)	(\$1.28)	
UPLIFT	\$0.00	\$0.00	\$0.00	\$0.00	\$0.00	\$0.00	\$0.00	
RESIDUALS	\$0.09	\$0.01	\$0.00	\$0.00	(\$0.02)	\$0.00	\$0.01	
ANCILLARY SERVICES	(\$0.82)	(\$0.82)	(\$0.81)	(\$0.77)	(\$0.76)	(\$0.70)	(\$0.75)	
TCC	\$0.00	\$0.00	\$0.00	\$0.00	\$0.00	\$0.00	\$0.00	
	15	16	17	18	19	20	21	
ENERGY	\$0.06	\$0.08	(\$0.02)	\$0.02	\$0.04	(\$0.04)	(\$0.12)	
TRANSMISSION SERVICE	(\$1.36)	(\$1.39)	(\$1.32)	(\$1.34)	(\$1.37)	(\$1.33)	(\$1.17)	
UPLIFT	\$0.00	\$0.00	(\$0.04)	(\$0.03)	\$0.00	\$0.00	\$0.00	
RESIDUALS	(\$0.01)	\$0.00	(\$0.01)	\$0.00	(\$0.02)	\$0.01	\$0.02	
ANCILLARY SERVICES	(\$0.83)	(\$0.82)	(\$0.76)	(\$0.81)	(\$0.82)	(\$0.80)	(\$0.71)	
TCC	\$0.00	\$0.00	\$0.00	\$0.00	\$0.00	\$0.00	\$0.00	
	22	23	24	25	26	27	28	
ENERGY	\$0.34	\$0.05	(\$0.13)	\$0.22	\$0.13	\$0.05	\$0.08	
TRANSMISSION SERVICE	(\$1.32)	(\$1.44)	(\$1.44)	(\$1.23)	(\$1.25)	(\$1.38)	(\$1.30)	
UPLIFT	\$0.00	\$0.00	\$0.00	\$0.00	\$0.00	\$0.00	\$0.00	
RESIDUALS	\$0.00	(\$0.01)	\$0.00	\$0.00	\$0.03	\$0.00	(\$0.02)	
ANCILLARY SERVICES	(\$0.80)	(\$0.86)	(\$0.85)	(\$0.72)	(\$0.75)	(\$0.82)	(\$0.75)	
TCC	\$0.00	\$0.00	\$0.00	\$0.00	\$0.00	\$0.00	\$0.00	
	29	30						
ENERGY	(\$0.15)	\$0.18						
TRANSMISSION SERVICE	(\$1.42)	(\$1.46)						
UPLIFT	(\$0.01)	\$0.00						
RESIDUALS	(\$0.02)	\$0.01						
ANCILLARY SERVICES	(\$0.87)	(\$0.86)						
TCC	\$0.00	\$0.00						



SETTLEMENTS REPORT  
November 2021 Close-Out Settlement  
August 5, 2022

**4-Month Settlement Adjustment – Market Supply Analysis**

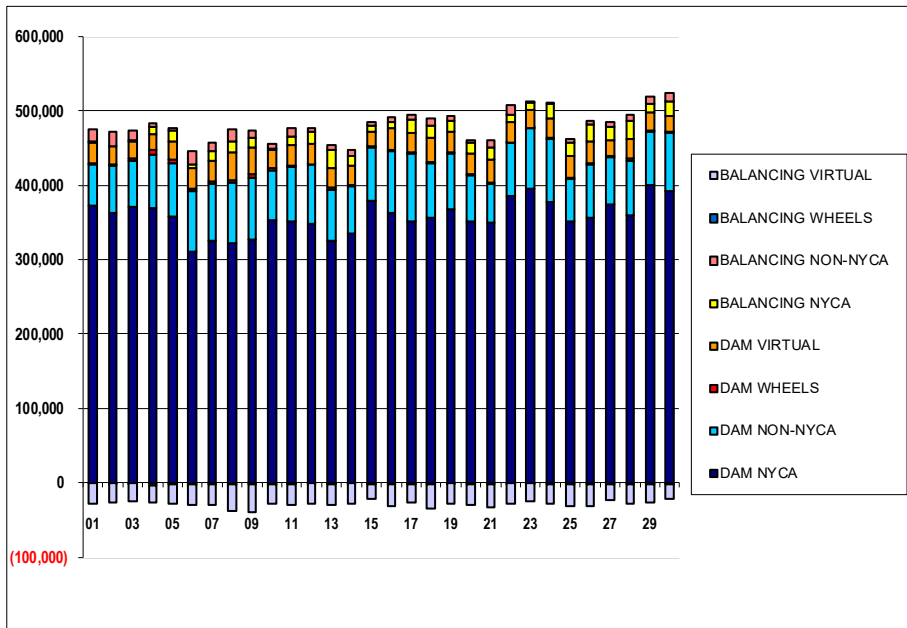
	MONDAY	TUESDAY	WEDNESDAY	THURSDAY	FRIDAY	SATURDAY	SUNDAY
	1	2	3	4	5	6	7
DAM NYCA	373,075	363,156	371,498	370,170	358,732	311,324	325,448
DAM NON-NYCA	54,443	63,346	60,902	70,965	71,156	80,397	76,355
DAM WHEELS	1,800	1,800	3,075	6,023	4,431	3,800	3,135
DAM VIRTUAL	27,634	24,915	23,115	21,737	25,041	27,655	28,486
BALANCING NYCA	1,368	(793)	2,275	9,509	14,404	4,931	12,015
BALANCING NON-NYCA	16,969	19,475	13,526	4,371	2,505	18,433	12,114
BALANCING WHEELS	0	0	(1,222)	(4,223)	(2,631)	(2,000)	(1,260)
BALANCING VIRTUAL	(27,634)	(24,915)	(23,115)	(21,737)	(25,041)	(27,655)	(28,486)
	8	9	10	11	12	13	14
DAM NYCA	321,531	327,194	353,193	351,602	347,505	324,987	335,799
DAM NON-NYCA	82,724	82,711	67,365	72,399	80,293	69,650	62,914
DAM WHEELS	3,180	4,404	2,955	1,852	798	2,340	1,044
DAM VIRTUAL	36,484	36,774	24,624	28,344	27,421	26,605	27,453
BALANCING NYCA	15,744	13,450	1,666	11,752	15,373	23,891	12,981
BALANCING NON-NYCA	15,938	8,439	6,354	10,516	4,909	7,013	8,093
BALANCING WHEELS	(1,380)	(2,604)	(2,730)	(1,852)	(798)	(2,340)	(1,044)
BALANCING VIRTUAL	(36,484)	(36,774)	(24,624)	(28,344)	(27,421)	(26,605)	(27,453)
	15	16	17	18	19	20	21
DAM NYCA	379,946	362,127	351,437	356,031	367,410	350,788	349,695
DAM NON-NYCA	70,668	84,633	91,982	73,230	75,904	62,158	52,348
DAM WHEELS	1,831	1,255	1,330	1,648	895	1,974	1,758
DAM VIRTUAL	19,044	29,678	25,372	32,572	27,361	27,447	30,800
BALANCING NYCA	7,949	7,248	18,859	17,233	15,598	15,653	16,976
BALANCING NON-NYCA	5,148	5,851	5,172	10,073	6,183	3,423	8,504
BALANCING WHEELS	(1,831)	(1,255)	(1,330)	(1,648)	(895)	(1,974)	(1,758)
BALANCING VIRTUAL	(19,044)	(29,678)	(25,372)	(32,572)	(27,361)	(27,447)	(30,800)
	22	23	24	25	26	27	28
DAM NYCA	385,371	395,403	376,782	351,386	356,036	374,913	358,975
DAM NON-NYCA	71,227	80,898	84,838	56,666	71,321	62,290	74,535
DAM WHEELS	1,210	576	2,579	2,408	2,724	2,000	2,106
DAM VIRTUAL	26,807	25,167	25,774	28,547	28,131	21,668	26,587
BALANCING NYCA	9,510	8,952	18,807	17,964	22,996	17,252	23,777
BALANCING NON-NYCA	13,363	297	2,657	5,924	5,073	6,257	8,498
BALANCING WHEELS	(1,210)	(476)	(2,579)	(2,408)	(2,724)	(1,991)	(2,106)
BALANCING VIRTUAL	(26,807)	(25,167)	(25,774)	(28,547)	(28,131)	(21,668)	(26,587)
	29	30					
DAM NYCA	399,564	392,648					
DAM NON-NYCA	72,250	78,507					
DAM WHEELS	2,145	1,644					
DAM VIRTUAL	24,711	19,945					
BALANCING NYCA	10,409	19,533					
BALANCING NON-NYCA	10,283	11,443					
BALANCING WHEELS	(2,145)	(1,644)					
BALANCING VIRTUAL	(24,711)	(19,945)					



SETTLEMENTS REPORT  
November 2021 Close-Out Settlement  
August 5, 2022

**Close-Out Settlement – Market Supply Analysis**

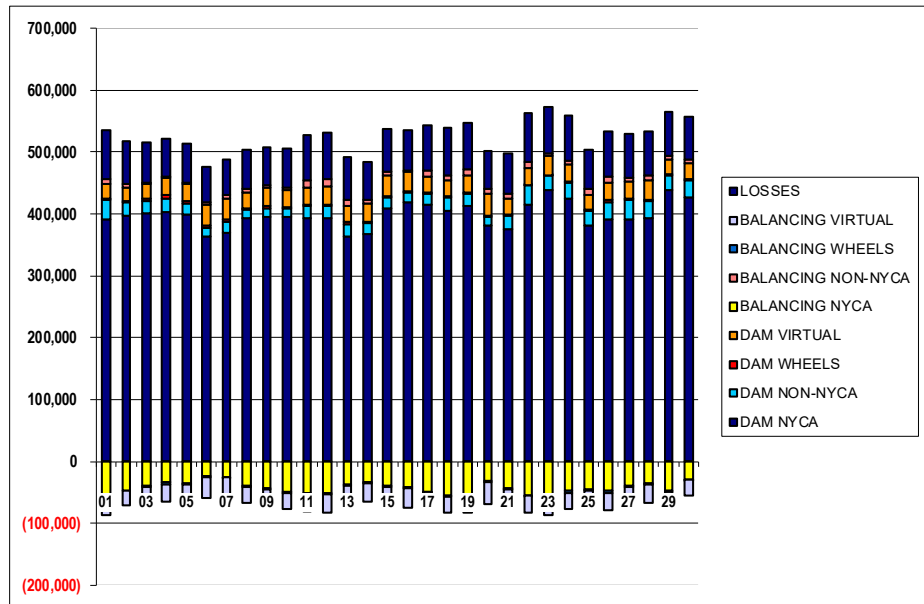
	MONDAY	TUESDAY	WEDNESDAY	THURSDAY	FRIDAY	SATURDAY	SUNDAY
	1	2	3	4	5	6	7
DAM NYCA	373,075	363,156	371,498	370,170	358,732	311,324	325,448
DAM NON-NYCA	54,443	63,346	60,902	70,965	71,156	80,397	76,355
DAM WHEELS	1,800	1,800	3,075	6,023	4,431	3,800	3,135
DAM VIRTUAL	27,634	24,915	23,115	21,737	25,041	27,655	28,486
BALANCING NYCA	1,368	(793)	2,275	9,509	14,404	4,931	12,015
BALANCING NON-NYCA	16,969	19,475	13,526	4,371	2,505	18,433	12,114
BALANCING WHEELS	0	0	(1,222)	(4,223)	(2,631)	(2,000)	(1,260)
BALANCING VIRTUAL	(27,634)	(24,915)	(23,115)	(21,737)	(25,041)	(27,655)	(28,486)
	8	9	10	11	12	13	14
DAM NYCA	321,531	327,194	353,193	351,602	347,505	324,987	335,799
DAM NON-NYCA	82,724	82,711	67,365	72,399	80,293	69,650	62,914
DAM WHEELS	3,180	4,404	2,955	1,852	798	2,340	1,044
DAM VIRTUAL	36,484	36,774	24,624	28,344	27,421	26,605	27,453
BALANCING NYCA	15,744	13,450	1,666	11,752	15,373	23,891	12,981
BALANCING NON-NYCA	15,938	8,439	6,354	10,516	4,909	7,013	8,093
BALANCING WHEELS	(1,380)	(2,604)	(2,730)	(1,852)	(798)	(2,340)	(1,044)
BALANCING VIRTUAL	(36,484)	(36,774)	(24,624)	(28,344)	(27,421)	(26,605)	(27,453)
	15	16	17	18	19	20	21
DAM NYCA	379,946	362,127	351,437	356,031	367,410	350,788	349,695
DAM NON-NYCA	70,668	84,633	91,982	73,230	75,904	62,158	52,348
DAM WHEELS	1,831	1,255	1,330	1,648	895	1,974	1,758
DAM VIRTUAL	19,044	29,678	25,372	32,572	27,361	27,447	30,800
BALANCING NYCA	7,949	7,248	18,859	17,233	15,598	15,653	16,976
BALANCING NON-NYCA	5,148	5,851	5,172	10,073	6,183	3,423	8,504
BALANCING WHEELS	(1,831)	(1,255)	(1,330)	(1,648)	(895)	(1,974)	(1,758)
BALANCING VIRTUAL	(19,044)	(29,678)	(25,372)	(32,572)	(27,361)	(27,447)	(30,800)
	22	23	24	25	26	27	28
DAM NYCA	385,371	395,403	376,782	351,386	356,036	374,913	358,975
DAM NON-NYCA	71,227	80,898	84,838	56,666	71,321	62,290	74,535
DAM WHEELS	1,210	576	2,579	2,408	2,724	2,000	2,106
DAM VIRTUAL	26,807	25,167	25,774	28,547	28,131	21,668	26,587
BALANCING NYCA	9,510	8,952	18,807	17,964	22,996	17,252	23,777
BALANCING NON-NYCA	13,363	297	2,657	5,924	5,073	6,257	8,498
BALANCING WHEELS	(1,210)	(476)	(2,579)	(2,408)	(2,724)	(1,991)	(2,106)
BALANCING VIRTUAL	(26,807)	(25,167)	(25,774)	(28,547)	(28,131)	(21,668)	(26,587)
	29	30					
DAM NYCA	399,564	392,648					
DAM NON-NYCA	72,250	78,507					
DAM WHEELS	2,145	1,644					
DAM VIRTUAL	24,711	19,945					
BALANCING NYCA	10,409	19,533					
BALANCING NON-NYCA	10,283	11,443					
BALANCING WHEELS	(2,145)	(1,644)					
BALANCING VIRTUAL	(24,711)	(19,945)					



SETTLEMENTS REPORT  
November 2021 Close-Out Settlement  
August 5, 2022

**4-Month Settlement Adjustment – Market Withdrawals Analysis**

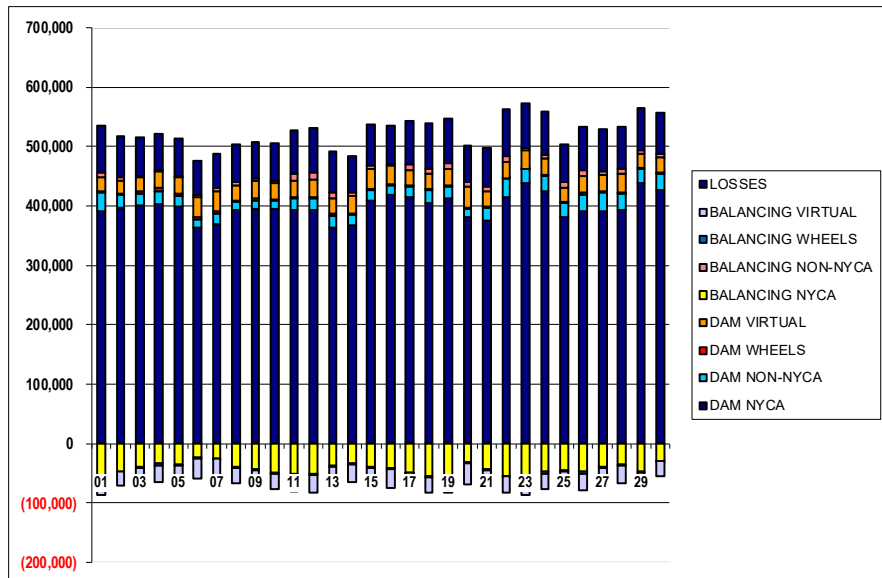
	MONDAY	TUESDAY	WEDNESDAY	THURSDAY	FRIDAY	SATURDAY	SUNDAY
	1	2	3	4	5	6	7
DAM NYCA	391,296	396,848	400,605	402,458	399,020	362,654	369,736
DAM NON-NYCA	31,849	21,647	20,330	22,429	17,504	14,515	17,280
DAM WHEELS	1,800	1,800	3,075	6,023	4,431	3,800	3,135
DAM VIRTUAL	22,630	22,914	24,194	26,864	27,399	33,579	34,246
BALANCING NYCA	(64,106)	(47,242)	(39,914)	(32,837)	(35,018)	(23,201)	(24,742)
BALANCING NON-NYCA	9,304	5,124	2,104	1,566	2,413	4,770	5,847
BALANCING WHEELS	0	0	(1,222)	(4,223)	(2,631)	(2,000)	(1,260)
BALANCING VIRTUAL	(22,630)	(22,914)	(24,194)	(26,864)	(27,399)	(33,579)	(34,246)
UFE/LOSSES	77,512	68,807	65,076	61,400	62,879	56,347	57,811
	8	9	10	11	12	13	14
DAM NYCA	392,171	394,633	394,307	393,243	393,335	363,798	366,839
DAM NON-NYCA	14,111	13,607	14,213	19,275	19,898	20,019	18,934
DAM WHEELS	3,180	4,404	2,955	1,852	798	2,340	1,044
DAM VIRTUAL	25,666	28,929	26,071	28,539	30,717	26,697	30,194
BALANCING NYCA	(38,724)	(42,697)	(47,945)	(50,369)	(51,055)	(36,906)	(33,034)
BALANCING NON-NYCA	6,007	4,487	5,026	10,309	10,881	9,866	5,451
BALANCING WHEELS	(1,380)	(2,604)	(2,730)	(1,852)	(798)	(2,340)	(1,044)
BALANCING VIRTUAL	(25,666)	(28,929)	(26,071)	(28,539)	(30,717)	(26,697)	(30,194)
UFE/LOSSES	62,371	61,764	62,977	73,811	75,021	68,763	61,596
	15	16	17	18	19	20	21
DAM NYCA	408,265	417,788	414,533	404,028	412,118	380,655	374,458
DAM NON-NYCA	18,776	16,559	18,639	22,040	20,558	14,231	23,300
DAM WHEELS	1,831	1,255	1,330	1,648	895	1,974	1,758
DAM VIRTUAL	32,444	31,680	25,074	25,792	28,231	35,884	25,509
BALANCING NYCA	(38,113)	(41,428)	(48,160)	(55,494)	(52,722)	(30,816)	(43,441)
BALANCING NON-NYCA	6,037	3,288	10,184	9,323	10,011	7,120	7,166
BALANCING WHEELS	(1,831)	(1,255)	(1,330)	(1,648)	(895)	(1,974)	(1,758)
BALANCING VIRTUAL	(32,444)	(31,680)	(25,074)	(25,792)	(28,231)	(35,884)	(25,509)
UFE/LOSSES	68,746	63,652	72,253	76,669	75,131	60,833	66,040
	22	23	24	25	26	27	28
DAM NYCA	414,828	437,448	424,395	381,954	390,693	391,269	393,837
DAM NON-NYCA	30,813	24,563	26,049	21,987	28,172	30,486	27,575
DAM WHEELS	1,210	576	2,579	2,408	2,724	2,000	2,106
DAM VIRTUAL	26,965	30,002	26,384	24,175	28,046	27,689	29,803
BALANCING NYCA	(54,270)	(56,165)	(47,336)	(44,177)	(47,429)	(39,368)	(34,812)
BALANCING NON-NYCA	9,258	5,687	5,947	8,993	11,049	6,377	8,336
BALANCING WHEELS	(1,210)	(476)	(2,579)	(2,408)	(2,724)	(1,991)	(2,106)
BALANCING VIRTUAL	(26,965)	(30,002)	(26,384)	(24,175)	(28,046)	(27,689)	(29,803)
UFE/LOSSES	78,842	74,017	74,029	63,182	72,940	71,946	70,849
	29	30					
DAM NYCA	438,211	426,764					
DAM NON-NYCA	24,229	28,331					
DAM WHEELS	2,145	1,644					
DAM VIRTUAL	23,632	24,651					
BALANCING NYCA	(46,924)	(28,202)					
BALANCING NON-NYCA	4,646	5,435					
BALANCING WHEELS	(2,145)	(1,644)					
BALANCING VIRTUAL	(23,632)	(24,651)					
UFE/LOSSES	72,344	69,803					



**SETTLEMENTS REPORT**  
**November 2021 Close-Out Settlement**  
**August 5, 2022**

**Close-Out Settlement – Market Withdrawals Analysis**

	MONDAY	TUESDAY	WEDNESDAY	THURSDAY	FRIDAY	SATURDAY	SUNDAY
	1	2	3	4	5	6	7
DAM NYCA	391,296	396,848	400,605	402,458	399,020	362,654	369,736
DAM NON-NYCA	31,849	21,647	20,330	22,429	17,504	14,515	17,280
DAM WHEELS	1,800	1,800	3,075	6,023	4,431	3,800	3,135
DAM VIRTUAL	22,630	22,914	24,194	26,864	27,399	33,579	34,246
BALANCING NYCA	(64,106)	(47,242)	(39,914)	(32,837)	(35,018)	(23,201)	(24,742)
BALANCING NON-NYCA	9,304	5,124	2,104	1,566	2,413	4,770	5,847
BALANCING WHEELS	0	0	(1,222)	(4,223)	(2,631)	(2,000)	(1,260)
BALANCING VIRTUAL	(22,630)	(22,914)	(24,194)	(26,864)	(27,399)	(33,579)	(34,246)
UFELOSSES	77,512	68,807	65,076	61,400	62,879	56,347	57,810
	8	9	10	11	12	13	14
DAM NYCA	392,171	394,633	394,307	393,243	393,335	363,798	366,839
DAM NON-NYCA	14,111	13,607	14,213	19,275	19,898	20,019	18,934
DAM WHEELS	3,180	4,404	2,955	1,852	798	2,340	1,044
DAM VIRTUAL	25,666	28,929	26,071	28,539	30,717	26,697	30,194
BALANCING NYCA	(38,724)	(42,697)	(47,945)	(50,369)	(51,055)	(36,906)	(33,034)
BALANCING NON-NYCA	6,907	4,487	5,026	10,309	10,881	9,866	5,451
BALANCING WHEELS	(1,380)	(2,604)	(2,730)	(1,852)	(798)	(2,340)	(1,044)
BALANCING VIRTUAL	(25,666)	(28,929)	(26,071)	(28,539)	(30,717)	(26,697)	(30,194)
UFELOSSES	62,371	61,764	62,977	73,811	75,021	68,763	61,596
	15	16	17	18	19	20	21
DAM NYCA	408,265	417,788	414,533	404,028	412,118	380,655	374,458
DAM NON-NYCA	18,776	16,559	18,639	22,040	20,558	14,231	23,300
DAM WHEELS	1,831	1,255	1,330	1,648	895	1,974	1,758
DAM VIRTUAL	32,444	31,680	25,074	25,792	28,231	35,884	25,509
BALANCING NYCA	(38,113)	(41,428)	(48,160)	(55,494)	(52,722)	(30,816)	(43,441)
BALANCING NON-NYCA	6,037	3,288	10,184	9,323	10,011	7,120	7,166
BALANCING WHEELS	(1,831)	(1,255)	(1,330)	(1,648)	(895)	(1,974)	(1,758)
BALANCING VIRTUAL	(32,444)	(31,680)	(25,074)	(25,792)	(28,231)	(35,884)	(25,509)
UFELOSSES	68,746	63,652	72,253	76,669	75,131	60,833	66,040
	22	23	24	25	26	27	28
DAM NYCA	414,828	437,448	424,395	381,954	390,693	391,269	393,837
DAM NON-NYCA	30,813	24,563	26,049	21,967	28,172	30,486	27,575
DAM WHEELS	1,210	576	2,579	2,408	2,724	2,000	2,106
DAM VIRTUAL	26,965	30,002	26,384	24,175	28,046	27,689	29,803
BALANCING NYCA	(54,270)	(56,165)	(47,335)	(44,177)	(47,429)	(39,368)	(34,812)
BALANCING NON-NYCA	9,258	5,687	5,947	8,993	11,049	6,377	8,336
BALANCING WHEELS	(1,210)	(476)	(2,579)	(2,408)	(2,724)	(1,991)	(2,106)
BALANCING VIRTUAL	(26,965)	(30,002)	(26,384)	(24,175)	(28,046)	(27,689)	(29,803)
UFELOSSES	78,842	74,017	74,029	63,182	72,940	71,946	70,849
	29	30					
DAM NYCA	438,211	426,764					
DAM NON-NYCA	24,229	28,331					
DAM WHEELS	2,145	1,644					
DAM VIRTUAL	23,632	24,651					
BALANCING NYCA	(46,924)	(28,202)					
BALANCING NON-NYCA	4,646	5,435					
BALANCING WHEELS	(2,145)	(1,644)					
BALANCING VIRTUAL	(23,632)	(24,651)					
UFELOSSES	72,344	69,803					

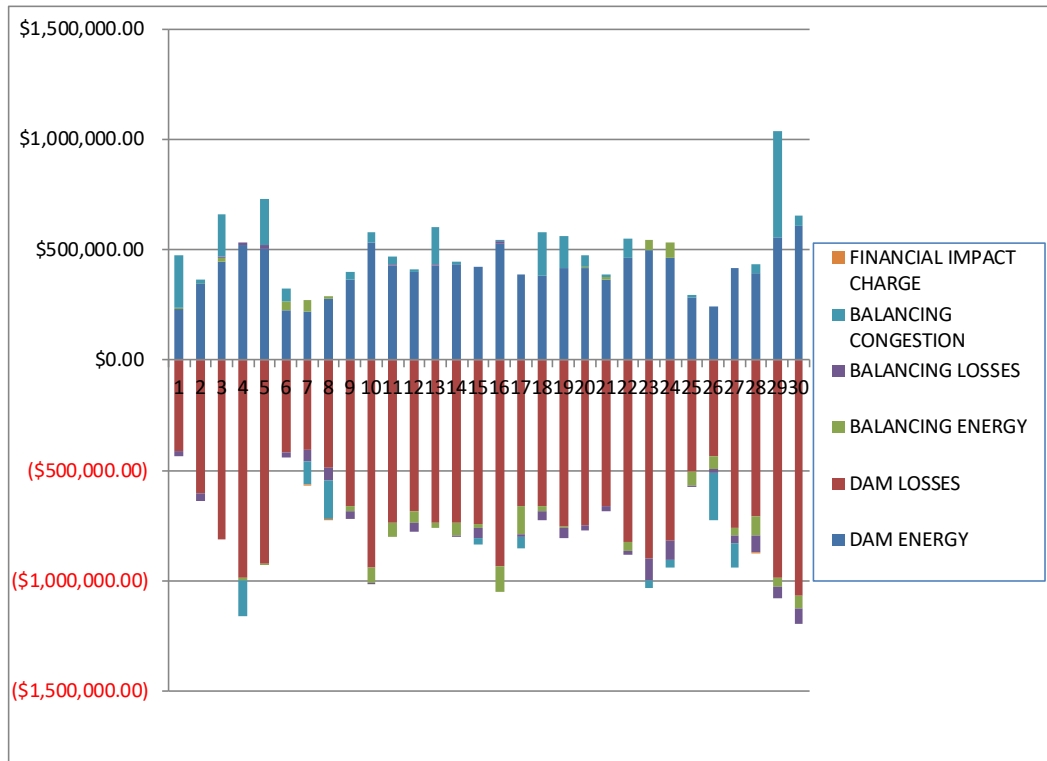




**SETTLEMENTS REPORT**  
**November 2021 Close-Out Settlement**  
**August 5, 2022**

**4-Month Settlement Adjustment – Market Residuals Analysis**

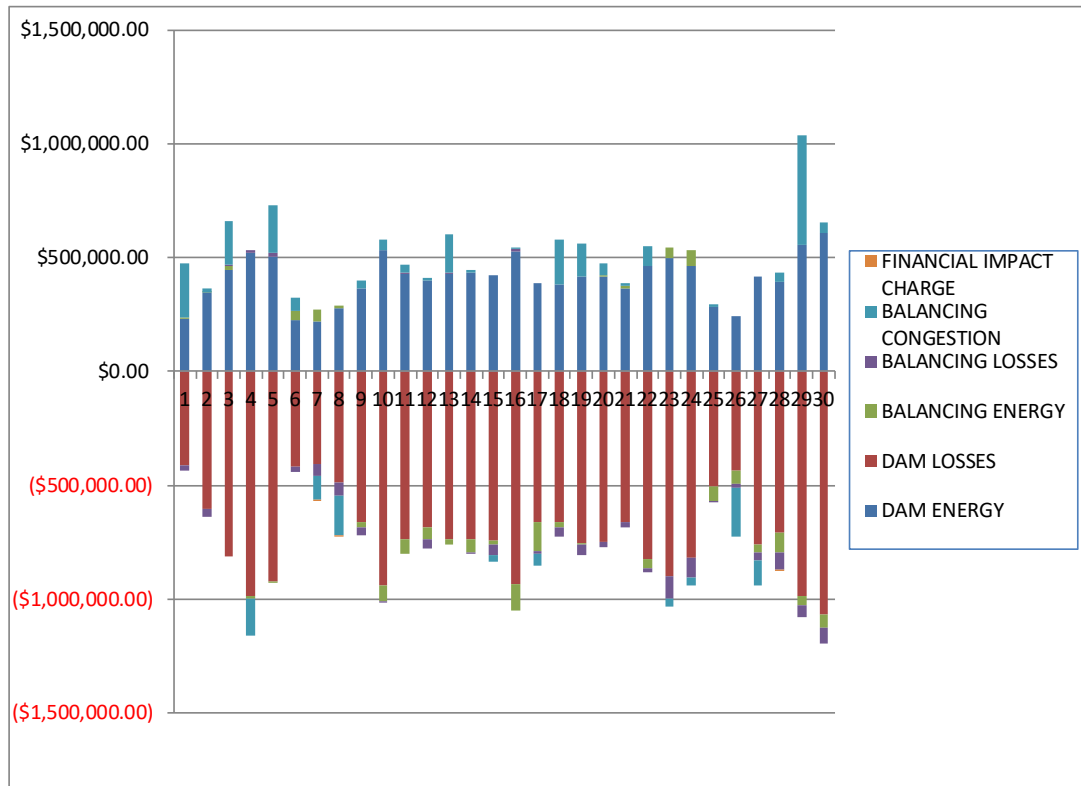
	MONDAY	TUESDAY	WEDNESDAY	THURSDAY	FRIDAY	SATURDAY	SUNDAY
	1	2	3	4	5	6	7
DAM ENERGY	\$230,434.65	\$345,254.60	\$446,196.18	\$518,827.51	\$500,548.24	\$226,716.85	\$221,404.07
DAM LOSSES	(\$415,353.52)	(\$606,848.83)	(\$810,540.80)	(\$984,916.00)	(\$923,201.62)	(\$419,961.23)	(\$407,668.64)
BALANCING ENERGY	\$3,626.89	\$4,079.78	\$13,547.91	(\$12,377.07)	(\$3,007.67)	\$41,452.10	\$48,496.65
BALANCING LOSSES	(\$22,483.21)	(\$30,518.98)	\$8,277.77	\$14,744.00	\$17,799.59	(\$24,453.02)	(\$50,003.95)
BALANCING CONGESTION	\$241,323.02	\$13,071.35	\$194,287.80	(\$162,421.18)	\$212,146.80	\$52,490.47	(\$107,569.49)
FINANCIAL IMPACT CHARGE	\$0.00	\$0.00	\$0.00	\$0.00	\$0.00	\$0.00	(\$1,305.83)
	8	9	10	11	12	13	14
DAM ENERGY	\$276,139.88	\$361,497.37	\$534,228.97	\$427,069.82	\$400,658.70	\$429,622.22	\$431,981.28
DAM LOSSES	(\$488,070.18)	(\$662,651.71)	(\$942,807.22)	(\$737,943.90)	(\$687,099.30)	(\$738,944.58)	(\$737,869.79)
BALANCING ENERGY	\$13,332.91	(\$24,753.51)	(\$65,989.91)	(\$61,699.82)	(\$49,737.63)	(\$22,205.48)	(\$55,289.96)
BALANCING LOSSES	(\$59,205.61)	(\$30,433.06)	(\$5,738.40)	\$5,584.04	(\$42,291.57)	\$2,410.84	(\$6,331.26)
BALANCING CONGESTION	(\$170,141.81)	\$38,575.66	\$45,106.25	\$34,861.49	\$8,856.26	\$172,242.75	\$14,104.34
FINANCIAL IMPACT CHARGE	(\$202.62)	\$0.00	\$0.00	\$0.00	\$0.00	\$0.00	\$0.00
	15	16	17	18	19	20	21
DAM ENERGY	\$424,193.25	\$526,650.91	\$387,684.83	\$378,934.68	\$418,005.52	\$414,230.93	\$364,476.42
DAM LOSSES	(\$745,515.57)	(\$932,980.83)	(\$663,427.55)	(\$661,722.83)	(\$755,823.54)	(\$751,259.88)	(\$662,827.60)
BALANCING ENERGY	(\$16,413.47)	(\$117,470.54)	(\$126,417.45)	(\$22,924.48)	(\$3,691.11)	\$9,426.04	\$12,123.29
BALANCING LOSSES	(\$43,343.77)	\$11,543.48	(\$10,660.71)	(\$40,541.20)	(\$45,742.33)	(\$23,643.12)	(\$21,269.20)
BALANCING CONGESTION	(\$31,523.11)	\$2,982.98	(\$53,394.01)	\$200,375.25	\$141,990.79	\$51,408.26	\$8,514.51
FINANCIAL IMPACT CHARGE	\$0.00	\$0.00	\$0.00	\$0.00	\$0.00	\$0.00	\$0.00
	22	23	24	25	26	27	28
DAM ENERGY	\$464,730.75	\$494,819.58	\$462,659.16	\$283,990.09	\$242,459.37	\$413,732.58	\$394,602.35
DAM LOSSES	(\$827,245.34)	(\$898,846.94)	(\$818,452.45)	(\$503,873.39)	(\$434,439.07)	(\$759,571.35)	(\$706,795.41)
BALANCING ENERGY	(\$38,711.99)	\$46,657.38	\$71,179.96	(\$63,217.22)	(\$56,836.05)	(\$36,489.19)	(\$89,185.51)
BALANCING LOSSES	(\$13,834.95)	(\$97,155.94)	(\$89,898.85)	(\$6,669.15)	(\$22,281.08)	(\$36,983.29)	(\$75,460.40)
BALANCING CONGESTION	\$82,481.62	(\$37,896.30)	(\$33,761.00)	\$10,478.05	(\$214,573.67)	(\$110,141.29)	\$39,244.09
FINANCIAL IMPACT CHARGE	\$0.00	\$0.00	\$0.00	\$0.00	\$0.00	\$0.00	(\$115.51)
	29	30					
DAM ENERGY	\$556,221.07	\$609,944.54					
DAM LOSSES	(\$985,892.65)	(\$1,066,975.53)					
BALANCING ENERGY	(\$40,687.01)	(\$56,596.89)					
BALANCING LOSSES	(\$51,875.57)	(\$72,510.70)					
BALANCING CONGESTION	\$481,695.83	\$46,632.54					
FINANCIAL IMPACT CHARGE	\$0.00	\$0.00					



**SETTLEMENTS REPORT**  
**November 2021 Close-Out Settlement**  
**August 5, 2022**

**Close-Out Settlement – Market Residuals Analysis**

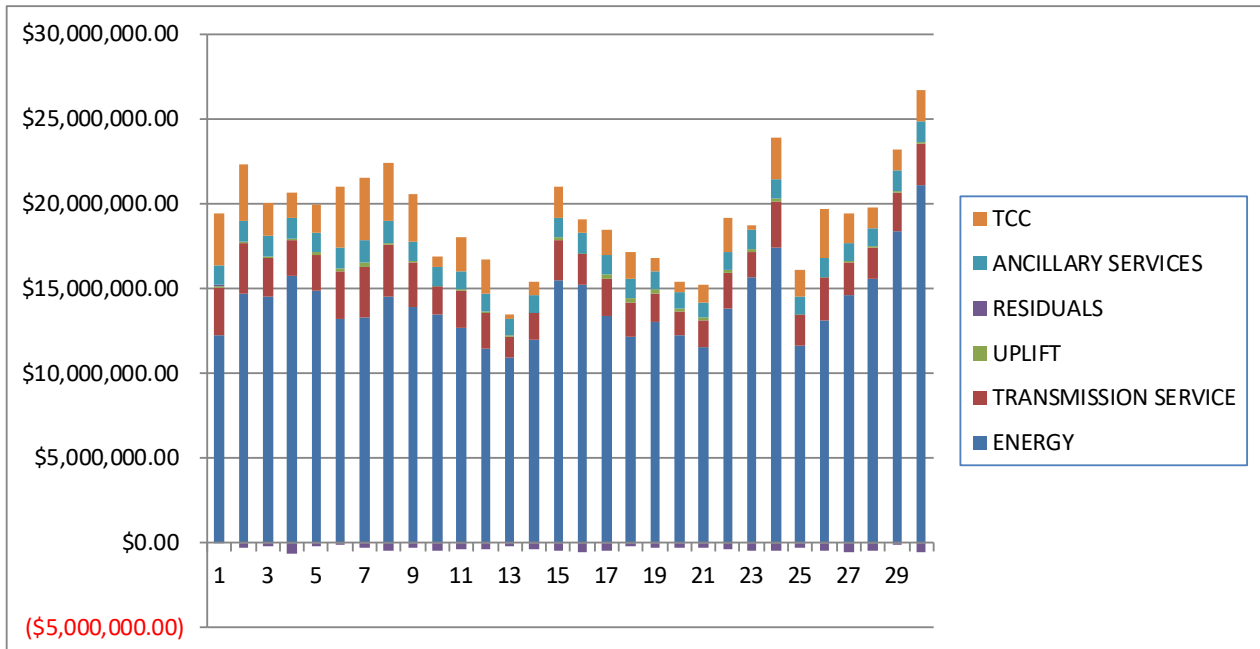
	MONDAY	TUESDAY	WEDNESDAY	THURSDAY	FRIDAY	SATURDAY	SUNDAY
	1	2	3	4	5	6	7
DAM ENERGY	\$230,434.65	\$345,254.60	\$446,196.18	\$518,827.51	\$500,548.24	\$226,716.85	\$221,404.07
DAM LOSSES	(\$415,353.52)	(\$606,848.82)	(\$810,540.80)	(\$984,916.01)	(\$923,201.62)	(\$419,961.23)	(\$407,668.64)
BALANCING ENERGY	\$3,626.89	\$4,079.78	\$13,547.91	(\$12,377.07)	(\$3,007.67)	\$41,452.09	\$48,496.64
BALANCING LOSSES	(\$22,483.21)	(\$30,518.99)	\$8,277.77	\$14,744.00	\$17,799.60	(\$24,453.02)	(\$50,003.94)
BALANCING CONGESTION	\$241,323.02	\$13,071.34	\$194,287.80	(\$162,421.19)	\$212,146.81	\$52,490.47	(\$107,569.49)
FINANCIAL IMPACT CHARGE	\$0.00	\$0.00	\$0.00	\$0.00	\$0.00	\$0.00	(\$1,305.87)
	8	9	10	11	12	13	14
DAM ENERGY	\$276,139.87	\$361,497.38	\$534,228.97	\$427,069.82	\$400,658.69	\$429,622.21	\$431,981.29
DAM LOSSES	(\$488,070.19)	(\$662,651.71)	(\$942,807.22)	(\$737,943.90)	(\$687,099.30)	(\$738,944.58)	(\$737,869.79)
BALANCING ENERGY	\$13,332.91	(\$24,753.51)	(\$65,989.91)	(\$61,699.82)	(\$49,737.64)	(\$22,205.48)	(\$55,289.96)
BALANCING LOSSES	(\$59,205.61)	(\$30,433.06)	(\$5,738.40)	\$5,584.04	(\$42,291.57)	\$2,410.84	(\$6,331.26)
BALANCING CONGESTION	(\$170,141.81)	\$38,575.66	\$45,106.25	\$34,861.49	\$8,856.26	\$172,242.76	\$14,104.34
FINANCIAL IMPACT CHARGE	(\$202.51)	\$0.00	\$0.00	\$0.00	\$0.00	\$0.00	\$0.00
	15	16	17	18	19	20	21
DAM ENERGY	\$424,193.24	\$526,650.91	\$387,684.83	\$378,934.68	\$418,005.51	\$414,230.93	\$364,476.43
DAM LOSSES	(\$745,515.57)	(\$932,980.83)	(\$663,427.56)	(\$661,722.83)	(\$755,823.54)	(\$751,259.87)	(\$662,827.59)
BALANCING ENERGY	(\$16,413.47)	(\$117,470.54)	(\$126,417.45)	(\$22,924.48)	(\$3,691.11)	\$9,426.04	\$12,123.29
BALANCING LOSSES	(\$43,343.77)	\$11,543.48	(\$10,660.71)	(\$40,541.20)	(\$45,742.33)	(\$23,643.12)	(\$21,269.20)
BALANCING CONGESTION	(\$31,523.11)	\$2,982.98	(\$53,394.01)	\$200,375.25	\$141,990.78	\$51,408.26	\$8,514.51
FINANCIAL IMPACT CHARGE	\$0.00	\$0.00	\$0.00	\$0.00	\$0.00	\$0.00	\$0.00
	22	23	24	25	26	27	28
DAM ENERGY	\$464,730.76	\$494,819.58	\$462,659.16	\$283,990.09	\$242,459.38	\$413,732.57	\$394,602.35
DAM LOSSES	(\$827,245.35)	(\$898,846.95)	(\$818,452.45)	(\$503,873.39)	(\$434,439.06)	(\$759,571.34)	(\$706,795.40)
BALANCING ENERGY	(\$38,711.99)	\$46,657.38	\$71,179.96	(\$63,217.22)	(\$56,836.05)	(\$36,489.19)	(\$89,185.51)
BALANCING LOSSES	(\$13,834.95)	(\$97,155.94)	(\$89,898.85)	(\$6,669.15)	(\$22,281.07)	(\$36,983.29)	(\$75,460.40)
BALANCING CONGESTION	\$82,481.62	(\$37,896.30)	(\$33,761.00)	\$10,478.05	(\$214,573.67)	(\$110,141.29)	\$39,244.09
FINANCIAL IMPACT CHARGE	\$0.00	\$0.00	\$0.00	\$0.00	\$0.00	\$0.00	(\$115.54)
	29	30					
DAM ENERGY	\$556,221.06	\$609,944.54					
DAM LOSSES	(\$985,892.65)	(\$1,066,975.52)					
BALANCING ENERGY	(\$40,687.01)	(\$56,596.89)					
BALANCING LOSSES	(\$51,875.58)	(\$72,510.71)					
BALANCING CONGESTION	\$481,695.83	\$46,632.55					
FINANCIAL IMPACT CHARGE	\$0.00	\$0.00					



SETTLEMENTS REPORT  
November 2021 Close-Out Settlement  
August 5, 2022

**4-Month Settlement Adjustment – Market Costs Analysis**

	MONDAY	TUESDAY	WEDNESDAY	THURSDAY	FRIDAY	SATURDAY	SUNDAY
	1	2	3	4	5	6	7
ENERGY	\$12,271,642.77	\$14,653,264.27	\$14,500,969.38	\$15,737,209.74	\$14,827,203.66	\$13,185,053.47	\$13,325,989.11
TRANSMISSION SERVICE	\$2,741,988.13	\$2,968,657.34	\$2,244,174.30	\$2,119,677.37	\$2,157,761.78	\$2,853,206.96	\$2,941,092.98
UPLIFT	\$139,951.48	\$108,247.09	\$122,888.01	\$85,972.28	\$162,242.81	\$125,903.37	\$277,311.24
RESIDUALS	\$37,547.83	(\$274,962.08)	(\$148,231.14)	(\$626,142.74)	(\$195,714.66)	(\$123,754.83)	(\$296,647.19)
ANCILLARY SERVICES	\$1,200,434.54	\$1,242,372.82	\$1,210,799.78	\$1,197,368.47	\$1,128,330.87	\$1,272,459.47	\$1,286,605.69
TCC	\$3,044,031.29	\$3,291,482.98	\$1,911,376.84	\$1,473,103.88	\$1,692,091.97	\$3,530,420.07	\$3,674,857.85
	8	9	10	11	12	13	14
ENERGY	\$14,525,888.83	\$13,933,607.03	\$13,463,242.16	\$12,667,203.34	\$11,487,203.25	\$10,888,319.60	\$11,987,079.29
TRANSMISSION SERVICE	\$3,027,626.70	\$2,579,471.40	\$1,644,013.48	\$2,195,096.64	\$2,072,432.60	\$1,295,831.04	\$1,534,551.26
UPLIFT	\$90,246.99	\$57,647.55	\$42,376.77	\$44,072.73	\$88,964.73	\$84,127.96	\$45,931.54
RESIDUALS	(\$428,147.43)	(\$317,765.25)	(\$435,200.31)	(\$332,128.37)	(\$369,613.54)	(\$156,874.25)	(\$353,405.39)
ANCILLARY SERVICES	\$1,354,731.80	\$1,200,598.02	\$1,078,180.83	\$1,083,617.89	\$1,020,983.79	\$969,612.84	\$1,015,620.88
TCC	\$3,404,017.62	\$2,751,589.77	\$690,335.72	\$1,986,566.94	\$1,993,237.06	\$239,759.88	\$769,140.57
	15	16	17	18	19	20	21
ENERGY	\$15,515,990.23	\$15,211,215.93	\$13,395,834.08	\$12,162,127.01	\$12,995,516.24	\$12,219,693.25	\$11,568,603.35
TRANSMISSION SERVICE	\$2,304,109.61	\$1,819,212.03	\$2,177,699.31	\$2,026,120.40	\$1,715,447.50	\$1,445,150.31	\$1,563,352.65
UPLIFT	\$162,848.72	\$30,673.80	\$214,500.37	\$234,877.59	\$222,206.81	\$149,557.85	\$114,955.67
RESIDUALS	(\$412,602.67)	(\$509,274.00)	(\$466,214.89)	(\$145,878.58)	(\$245,260.67)	(\$299,837.77)	(\$298,982.58)
ANCILLARY SERVICES	\$1,207,756.56	\$1,202,372.83	\$1,179,722.48	\$1,124,783.27	\$1,032,922.75	\$976,506.42	\$958,385.63
TCC	\$1,809,211.34	\$838,942.07	\$1,516,068.74	\$1,611,881.02	\$847,143.59	\$582,449.03	\$1,034,937.69
	22	23	24	25	26	27	28
ENERGY	\$13,783,849.58	\$15,626,121.45	\$17,411,931.59	\$11,609,230.11	\$13,072,883.91	\$14,603,881.33	\$15,526,576.29
TRANSMISSION SERVICE	\$2,125,151.90	\$1,544,923.40	\$2,685,358.79	\$1,882,871.22	\$2,594,350.61	\$1,954,993.05	\$1,893,290.32
UPLIFT	\$162,534.82	\$182,813.96	\$188,620.77	\$1,144.35	\$17,089.28	\$16,057.26	\$27,084.22
RESIDUALS	(\$332,579.91)	(\$492,422.22)	(\$408,273.18)	(\$279,291.62)	(\$485,670.50)	(\$529,452.54)	(\$437,710.39)
ANCILLARY SERVICES	\$1,029,241.37	\$1,072,022.05	\$1,169,796.33	\$1,010,136.72	\$1,097,711.89	\$1,078,737.96	\$1,086,612.73
TCC	\$2,056,339.41	\$298,226.11	\$2,381,086.96	\$1,542,340.81	\$2,926,334.41	\$1,800,990.55	\$1,236,629.73
	29	30					
ENERGY	\$18,403,883.59	\$21,104,490.92					
TRANSMISSION SERVICE	\$2,190,257.13	\$2,437,172.54					
UPLIFT	\$127,801.99	\$55,338.55					
RESIDUALS	(\$40,538.33)	(\$539,506.04)					
ANCILLARY SERVICES	\$1,193,907.13	\$1,248,669.76					
TCC	\$1,258,394.53	\$1,801,677.41					



SETTLEMENTS REPORT  
November 2021 Close-Out Settlement  
August 5, 2022

**Close-Out Settlement – Market Costs Analysis**

	MONDAY	TUESDAY	WEDNESDAY	THURSDAY	FRIDAY	SATURDAY	SUNDAY
	1	2	3	4	5	6	7
ENERGY	\$12,271,642.88	\$14,653,264.49	\$14,500,969.15	\$15,737,209.51	\$14,827,204.10	\$13,185,053.59	\$13,325,989.35
TRANSMISSION SERVICE	\$2,741,986.86	\$2,968,655.99	\$2,244,172.90	\$2,119,675.96	\$2,157,760.41	\$2,853,205.70	\$2,941,098.00
UPLIFT	\$139,951.47	\$108,247.09	\$122,888.01	\$85,972.29	\$162,242.81	\$125,903.37	\$277,311.23
RESIDUALS	\$37,547.83	(\$274,962.09)	(\$148,231.14)	(\$626,142.76)	(\$195,714.64)	(\$123,754.84)	(\$296,647.23)
ANCILLARY SERVICES	\$1,200,433.80	\$1,242,372.01	\$1,210,798.93	\$1,197,367.63	\$1,128,330.02	\$1,272,458.70	\$1,286,608.69
TCC	\$3,044,031.29	\$3,291,482.98	\$1,911,376.84	\$1,473,103.88	\$1,692,091.97	\$3,530,420.07	\$3,674,857.85
	8	9	10	11	12	13	14
ENERGY	\$14,525,888.97	\$13,933,607.00	\$13,463,241.92	\$12,667,203.28	\$11,487,202.82	\$10,888,319.40	\$11,987,079.60
TRANSMISSION SERVICE	\$3,027,625.33	\$2,579,469.99	\$1,644,012.09	\$2,195,095.34	\$2,072,431.35	\$1,295,829.82	\$1,534,549.98
UPLIFT	\$90,246.99	\$57,647.55	\$42,376.77	\$44,072.73	\$88,964.73	\$84,127.96	\$45,931.54
RESIDUALS	(\$428,147.34)	(\$317,765.24)	(\$435,200.31)	(\$332,128.37)	(\$369,613.56)	(\$156,874.25)	(\$353,405.38)
ANCILLARY SERVICES	\$1,354,730.98	\$1,200,597.20	\$1,078,180.02	\$1,083,617.12	\$1,020,983.03	\$969,612.14	\$1,015,620.13
TCC	\$3,404,017.62	\$2,751,589.77	\$690,335.72	\$1,986,566.94	\$1,993,237.06	\$239,759.88	\$769,140.57
	15	16	17	18	19	20	21
ENERGY	\$15,515,990.29	\$15,211,216.01	\$13,395,834.06	\$12,162,127.03	\$12,995,516.28	\$12,219,693.21	\$11,568,603.23
TRANSMISSION SERVICE	\$2,304,108.25	\$1,819,210.64	\$2,177,697.99	\$2,026,119.06	\$1,715,446.13	\$1,445,148.98	\$1,563,351.48
UPLIFT	\$162,848.72	\$30,673.80	\$214,500.33	\$234,877.56	\$222,206.81	\$149,557.85	\$114,955.67
RESIDUALS	(\$412,602.68)	(\$509,274.00)	(\$466,214.90)	(\$145,878.58)	(\$245,260.69)	(\$299,837.76)	(\$298,982.56)
ANCILLARY SERVICES	\$1,207,755.73	\$1,202,372.01	\$1,179,721.72	\$1,124,782.46	\$1,032,921.93	\$976,505.62	\$958,384.92
TCC	\$1,809,211.34	\$838,942.07	\$1,516,068.74	\$1,611,881.02	\$847,143.59	\$582,449.03	\$1,034,937.69
	22	23	24	25	26	27	28
ENERGY	\$13,783,849.92	\$15,626,121.50	\$17,411,931.46	\$11,609,230.33	\$13,072,884.04	\$14,603,881.38	\$15,526,576.37
TRANSMISSION SERVICE	\$2,125,150.58	\$1,544,921.96	\$2,685,357.35	\$1,882,869.99	\$2,594,349.36	\$1,954,991.67	\$1,893,289.02
UPLIFT	\$162,534.82	\$182,813.96	\$188,620.77	\$1,144.35	\$17,089.28	\$16,057.26	\$27,084.22
RESIDUALS	(\$332,579.91)	(\$492,422.23)	(\$408,273.18)	(\$279,291.62)	(\$485,670.47)	(\$529,452.54)	(\$437,710.41)
ANCILLARY SERVICES	\$1,029,240.57	\$1,072,021.19	\$1,169,795.48	\$1,010,136.00	\$1,097,711.14	\$1,078,737.14	\$1,086,611.98
TCC	\$2,056,339.41	\$298,226.11	\$2,381,086.96	\$1,542,340.81	\$2,926,334.41	\$1,800,990.55	\$1,236,629.73
	29	30					
ENERGY	\$18,403,883.44	\$21,104,491.10					
TRANSMISSION SERVICE	\$2,190,255.71	\$2,437,171.08					
UPLIFT	\$127,801.98	\$55,338.55					
RESIDUALS	(\$40,538.35)	(\$539,506.03)					
ANCILLARY SERVICES	\$1,193,906.26	\$1,248,668.90					
TCC	\$1,258,394.53	\$1,801,677.41					

