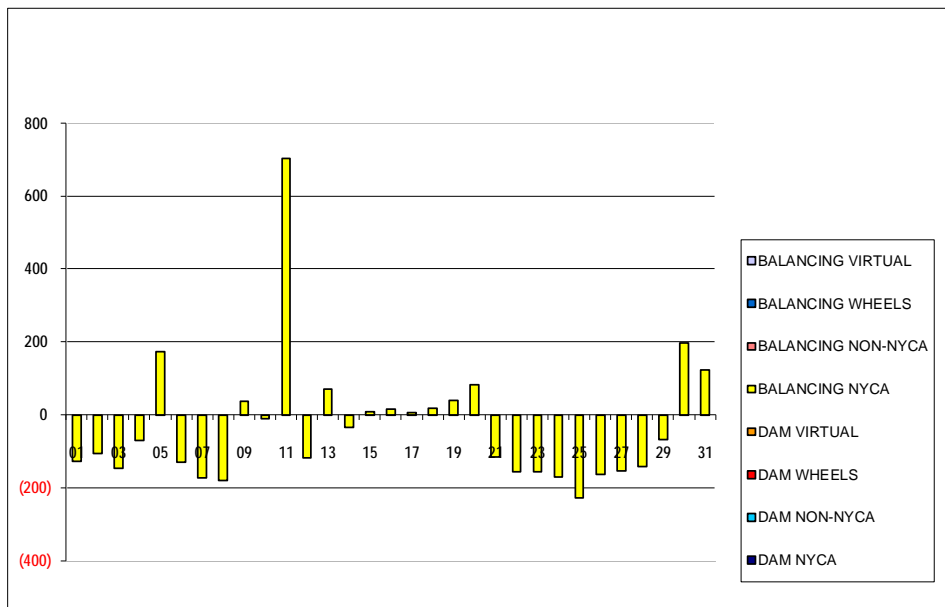


SETTLEMENTS REPORT
 October 2020 Settlement Adjustment
 March 5, 2021

Settlement Adjustment – Market Supply Delta Analysis

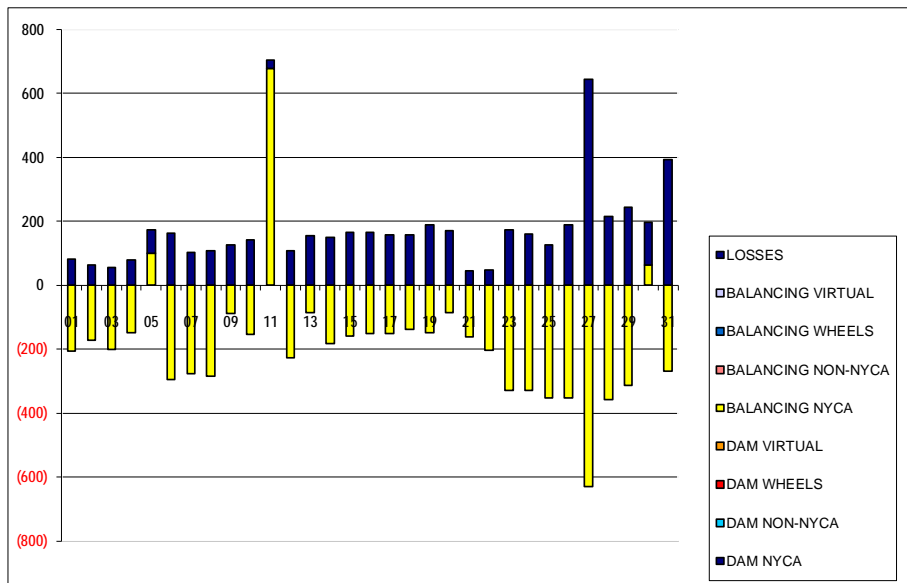
	MONDAY	TUESDAY	WEDNESDAY	THURSDAY	FRIDAY	SATURDAY	SUNDAY
				1	2	3	4
DAM NYCA				0	0	0	0
DAM NON-NYCA				0	0	0	0
DAM WHEELS				0	0	0	0
DAM VIRTUAL				0	0	0	0
BALANCING NYCA				(127)	(107)	(147)	(70)
BALANCING NON-NYCA				0	0	0	0
BALANCING WHEELS				0	0	0	0
BALANCING VIRTUAL				0	0	0	0
	5	6	7	8	9	10	11
DAM NYCA	0	0	0	0	0	0	0
DAM NON-NYCA	0	0	0	0	0	0	0
DAM WHEELS	0	0	0	0	0	0	0
DAM VIRTUAL	0	0	0	0	0	0	0
BALANCING NYCA	174	(131)	(173)	(180)	37	(12)	704
BALANCING NON-NYCA	0	0	0	0	0	0	0
BALANCING WHEELS	0	0	0	0	0	0	0
BALANCING VIRTUAL	0	0	0	0	0	0	0
	12	13	14	15	16	17	18
DAM NYCA	0	0	0	0	0	0	0
DAM NON-NYCA	0	0	0	0	0	0	0
DAM WHEELS	0	0	0	0	0	0	0
DAM VIRTUAL	0	0	0	0	0	0	0
BALANCING NYCA	(119)	70	(34)	8	15	7	19
BALANCING NON-NYCA	0	0	0	0	0	0	0
BALANCING WHEELS	0	0	0	0	0	0	0
BALANCING VIRTUAL	0	0	0	0	0	0	0
	19	20	21	22	23	24	25
DAM NYCA	0	0	0	0	0	0	0
DAM NON-NYCA	0	0	0	0	0	0	0
DAM WHEELS	0	0	0	0	0	0	0
DAM VIRTUAL	0	0	0	0	0	0	0
BALANCING NYCA	41	84	(116)	(156)	(155)	(170)	(227)
BALANCING NON-NYCA	0	0	0	0	0	0	0
BALANCING WHEELS	0	0	0	0	0	0	0
BALANCING VIRTUAL	0	0	0	0	0	0	0
	26	27	28	29	30	31	
DAM NYCA	0	0	0	0	0	0	
DAM NON-NYCA	0	0	0	0	0	0	
DAM WHEELS	0	0	0	0	0	0	
DAM VIRTUAL	0	0	0	0	0	0	
BALANCING NYCA	(163)	(154)	(143)	(69)	198	124	
BALANCING NON-NYCA	0	0	0	0	0	0	
BALANCING WHEELS	0	0	0	0	0	0	
BALANCING VIRTUAL	0	0	0	0	0	0	



SETTLEMENTS REPORT
 October 2020 Settlement Adjustment
 March 5, 2021

Settlement Adjustment – Market Withdrawals Delta Analysis

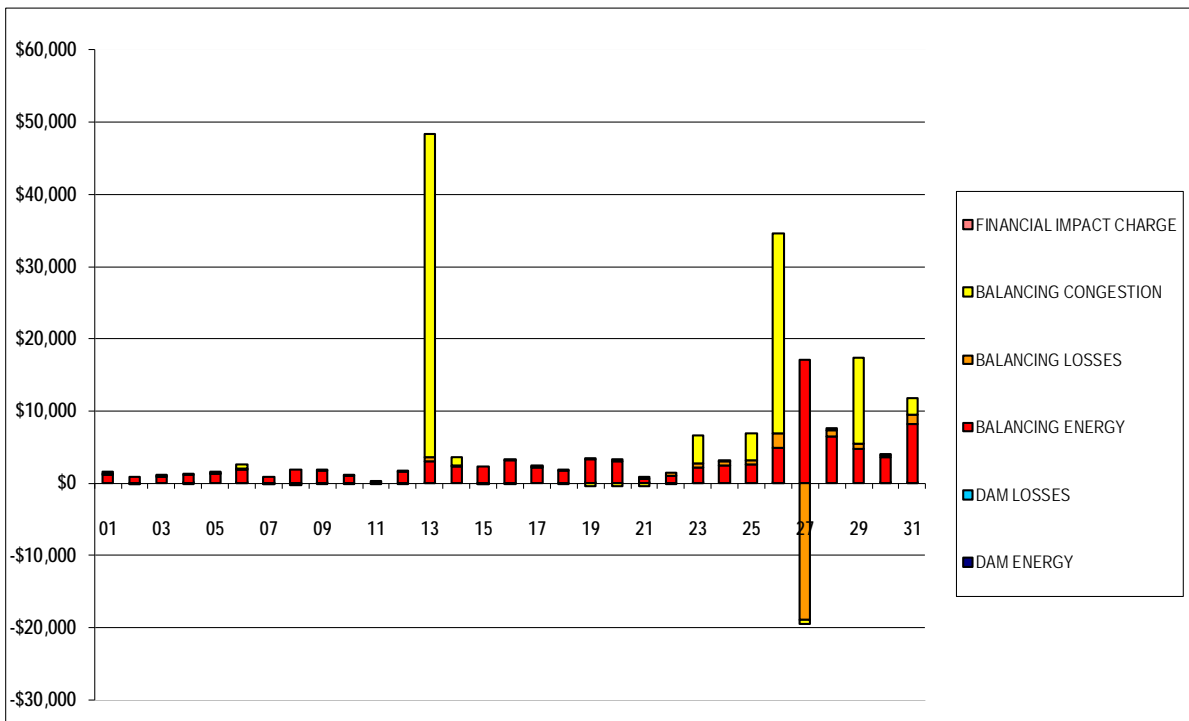
	MONDAY	TUESDAY	WEDNESDAY	THURSDAY	FRIDAY	SATURDAY	SUNDAY
				1	2	3	4
DAM NYCA				0	0	0	0
DAM NON-NYCA				0	0	0	0
DAM WHEELS				0	0	0	0
DAM VIRTUAL				0	0	0	0
BALANCING NYCA				(207)	(171)	(202)	(148)
BALANCING NON-NYCA				0	0	0	0
BALANCING WHEELS				0	0	0	0
BALANCING VIRTUAL				0	0	0	0
UFE/LOSSES				81	64	54	78
	5	6	7	8	9	10	11
DAM NYCA	0	0	0	0	0	0	0
DAM NON-NYCA	0	0	0	0	0	0	0
DAM WHEELS	0	0	0	0	0	0	0
DAM VIRTUAL	0	0	0	0	0	0	0
BALANCING NYCA	101	(294)	(276)	(284)	(89)	(153)	678
BALANCING NON-NYCA	0	0	0	0	0	0	0
BALANCING WHEELS	0	0	0	0	0	0	0
BALANCING VIRTUAL	0	0	0	0	0	0	0
UFE/LOSSES	73	163	103	107	127	142	26
	12	13	14	15	16	17	18
DAM NYCA	0	0	0	0	0	0	0
DAM NON-NYCA	0	0	0	0	0	0	0
DAM WHEELS	0	0	0	0	0	0	0
DAM VIRTUAL	0	0	0	0	0	0	0
BALANCING NYCA	(227)	(86)	(183)	(158)	(150)	(151)	(138)
BALANCING NON-NYCA	0	0	0	0	0	0	0
BALANCING WHEELS	0	0	0	0	0	0	0
BALANCING VIRTUAL	0	0	0	0	0	0	0
UFE/LOSSES	108	156	149	166	165	158	156
	19	20	21	22	23	24	25
DAM NYCA	0	0	0	0	0	0	0
DAM NON-NYCA	0	0	0	0	0	0	0
DAM WHEELS	0	0	0	0	0	0	0
DAM VIRTUAL	0	0	0	0	0	0	0
BALANCING NYCA	(148)	(86)	(161)	(204)	(329)	(330)	(352)
BALANCING NON-NYCA	0	0	0	0	0	0	0
BALANCING WHEELS	0	0	0	0	0	0	0
BALANCING VIRTUAL	0	0	0	0	0	0	0
UFE/LOSSES	189	170	45	48	174	160	125
	26	27	28	29	30	31	
DAM NYCA	0	0	0	0	0	0	
DAM NON-NYCA	0	0	0	0	0	0	
DAM WHEELS	0	0	0	0	0	0	
DAM VIRTUAL	0	0	0	0	0	0	
BALANCING NYCA	(352)	(630)	(357)	(313)	62	(270)	
BALANCING NON-NYCA	0	0	0	0	0	0	
BALANCING WHEELS	0	0	0	0	0	0	
BALANCING VIRTUAL	0	0	0	0	0	0	
UFE/LOSSES	189	645	215	244	135	394	



SETTLEMENTS REPORT
 October 2020 Settlement Adjustment
 March 5, 2021

Settlement Adjustment – Market Residuals Delta Analysis

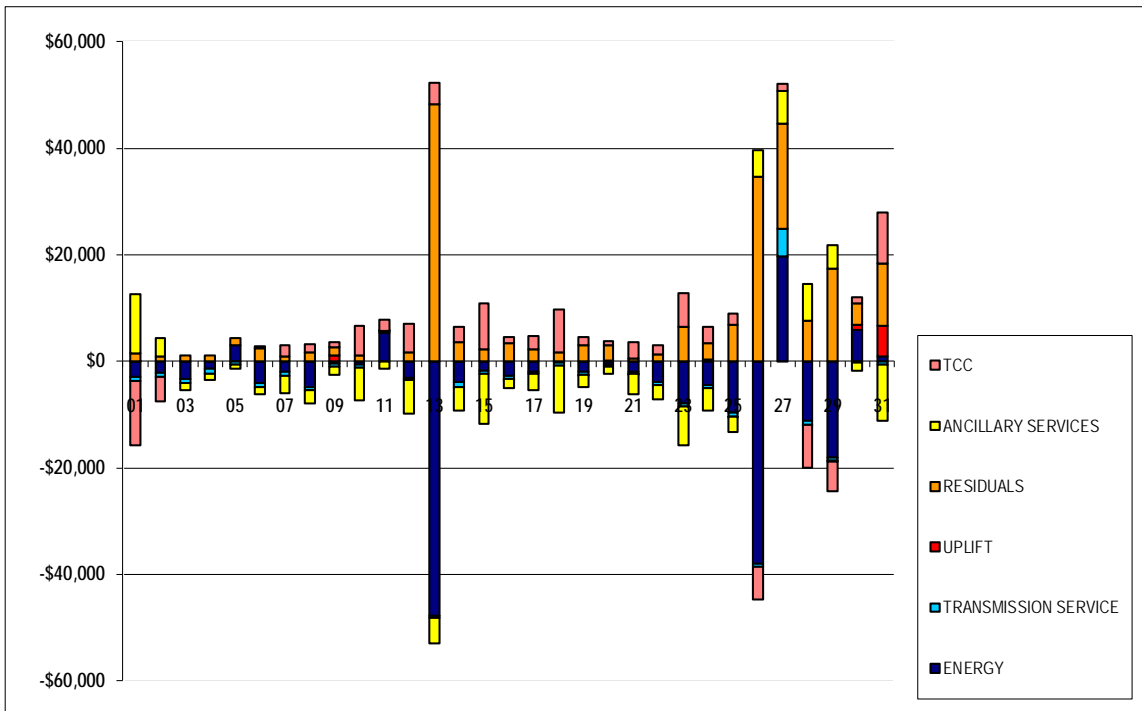
	MONDAY	TUESDAY	WEDNESDAY	THURSDAY	FRIDAY	SATURDAY	SUNDAY
				1	2	3	4
DAM ENERGY				\$0.00	\$0.00	\$0.00	\$0.00
DAM LOSSES				\$0.00	(\$0.01)	\$0.00	\$0.01
BALANCING ENERGY				\$1,157.50	\$934.57	\$913.27	\$1,123.86
BALANCING LOSSES				\$145.25	(\$12.46)	\$73.40	(\$11.02)
BALANCING CONGESTION				\$246.08	(\$63.13)	\$26.01	\$0.01
FINANCIAL IMPACT CHARGE				\$0.00	\$0.00	\$0.00	\$0.00
	5	6	7	8	9	10	11
DAM ENERGY	(\$0.01)	\$0.01	\$0.00	\$0.00	\$0.01	(\$0.01)	\$0.00
DAM LOSSES	\$0.00	\$0.00	\$0.00	\$0.00	\$0.01	\$0.00	\$0.00
BALANCING ENERGY	\$1,266.91	\$1,928.96	\$920.73	\$1,890.68	\$1,761.76	\$1,010.44	\$216.63
BALANCING LOSSES	\$8.43	\$155.21	(\$5.66)	(\$96.70)	\$0.33	(\$6.32)	(\$138.82)
BALANCING CONGESTION	\$240.89	\$446.03	(\$30.61)	(\$88.00)	(\$178.81)	\$10.31	\$32.65
FINANCIAL IMPACT CHARGE	\$0.00	\$0.00	\$0.00	\$0.00	\$0.00	\$0.00	\$0.00
	12	13	14	15	16	17	18
DAM ENERGY	\$0.00	\$0.01	(\$0.01)	\$0.00	\$0.00	(\$0.01)	(\$0.01)
DAM LOSSES	(\$0.01)	\$0.00	\$0.00	\$0.00	\$0.00	\$0.00	\$0.00
BALANCING ENERGY	\$1,593.00	\$3,060.13	\$2,296.56	\$2,321.97	\$3,173.07	\$2,188.31	\$1,702.77
BALANCING LOSSES	(\$56.28)	\$482.39	\$179.69	(\$62.24)	\$152.32	\$99.56	\$51.50
BALANCING CONGESTION	\$59.98	\$44,778.13	\$1,075.02	(\$50.16)	(\$2.28)	\$3.32	(\$149.79)
FINANCIAL IMPACT CHARGE	\$0.00	\$0.00	\$0.00	\$0.00	\$0.00	\$0.00	\$0.00
	19	20	21	22	23	24	25
DAM ENERGY	(\$0.01)	\$0.00	\$0.00	\$0.00	\$0.01	\$0.00	\$0.00
DAM LOSSES	\$0.01	\$0.00	\$0.01	\$0.00	\$0.00	\$0.00	\$0.00
BALANCING ENERGY	\$3,296.82	\$3,066.03	\$584.04	\$958.31	\$2,201.97	\$2,474.70	\$2,592.36
BALANCING LOSSES	\$187.95	\$243.78	\$258.37	\$416.99	\$479.38	\$550.79	\$628.30
BALANCING CONGESTION	(\$462.73)	(\$440.07)	(\$379.15)	(\$86.39)	\$3,879.32	\$107.53	\$3,625.27
FINANCIAL IMPACT CHARGE	\$0.00	\$0.00	\$0.00	\$0.00	\$0.00	\$0.00	\$0.00
	26	27	28	29	30	31	
DAM ENERGY	\$0.01	\$0.00	\$0.00	(\$0.01)	\$0.01	\$0.00	
DAM LOSSES	\$0.00	(\$0.01)	\$0.00	(\$0.01)	\$0.00	\$0.01	
BALANCING ENERGY	\$4,822.09	\$17,036.11	\$6,528.23	\$4,705.70	\$3,587.11	\$8,256.97	
BALANCING LOSSES	\$2,126.61	(\$18,956.67)	\$830.54	\$807.12	\$327.41	\$1,245.50	
BALANCING CONGESTION	\$27,646.99	(\$591.29)	\$326.09	\$11,811.42	\$122.98	\$2,232.45	
FINANCIAL IMPACT CHARGE	\$0.00	\$0.00	\$0.00	\$0.00	\$0.00	\$0.00	



SETTLEMENTS REPORT
 October 2020 Settlement Adjustment
 March 5, 2021

Settlement Adjustment – Market Costs Delta Analysis

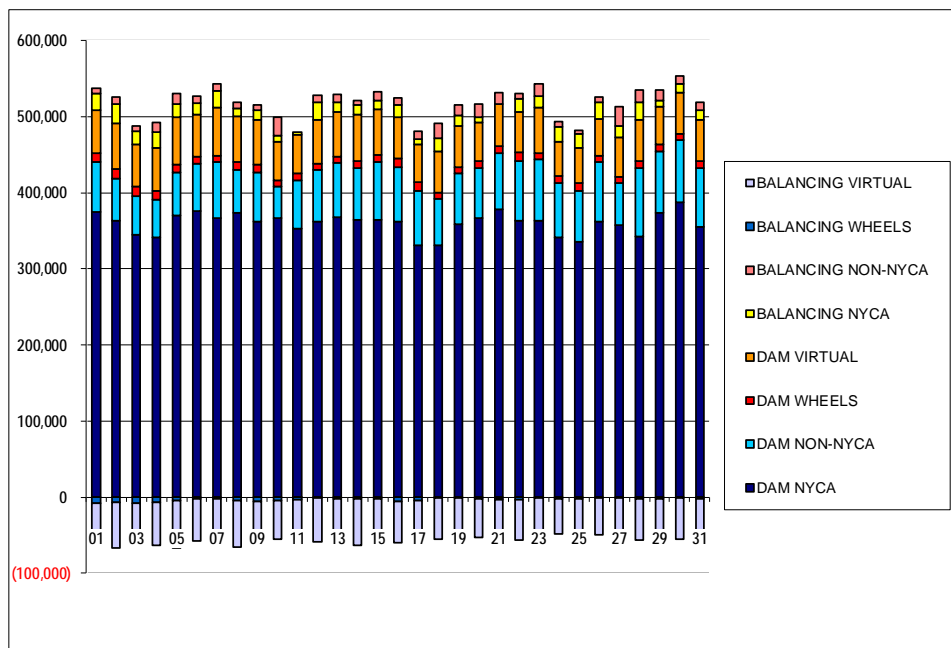
	MONDAY	TUESDAY	WEDNESDAY	THURSDAY	FRIDAY	SATURDAY	SUNDAY
ENERGY				1	2	3	4
TRANSMISSION SERVICE				(\$2,846.08)	(\$2,086.36)	(\$3,244.02)	(\$1,465.98)
UPLIFT				(\$768.76)	(\$758.49)	(\$923.00)	(\$846.70)
RESIDUALS				\$0.61	(\$0.01)	\$0.00	\$0.00
ANCILLARY SERVICES				\$1,548.83	\$858.97	\$1,012.68	\$1,112.86
TCC				\$10,974.17	\$3,518.77	(\$1,329.34)	(\$1,191.32)
				(\$12,092.74)	(\$4,613.01)	\$0.00	\$0.00
	5	6	7	8	9	10	11
ENERGY	\$2,941.29	(\$4,023.38)	(\$2,013.02)	(\$4,848.21)	(\$494.85)	(\$652.98)	\$5,351.51
TRANSMISSION SERVICE	(\$574.70)	(\$737.40)	(\$696.10)	(\$628.75)	(\$418.91)	(\$484.16)	\$300.51
UPLIFT	\$0.00	(\$0.02)	\$0.01	\$37.39	\$1,062.48	\$2.89	\$0.00
RESIDUALS	\$1,516.22	\$2,530.21	\$884.46	\$1,705.98	\$1,583.30	\$1,014.42	\$110.46
ANCILLARY SERVICES	(\$758.90)	(\$1,378.85)	(\$3,274.11)	(\$2,355.85)	(\$1,579.31)	(\$6,268.90)	(\$1,380.99)
TCC	\$0.00	\$288.79	\$2,233.58	\$1,406.38	\$977.39	\$5,556.98	\$2,000.62
	12	13	14	15	16	17	18
ENERGY	(\$3,033.11)	(\$47,784.17)	(\$3,918.66)	(\$1,797.18)	(\$2,768.98)	(\$1,961.24)	(\$280.39)
TRANSMISSION SERVICE	(\$527.12)	(\$468.80)	(\$996.62)	(\$524.31)	(\$469.88)	(\$446.83)	(\$531.54)
UPLIFT	\$0.16	(\$0.01)	\$1.34	(\$0.01)	(\$2.64)	\$0.00	\$1.89
RESIDUALS	\$1,596.69	\$48,320.66	\$3,551.26	\$2,209.57	\$3,323.11	\$2,291.18	\$1,604.47
ANCILLARY SERVICES	(\$6,278.94)	(\$4,669.37)	(\$4,285.78)	(\$9,363.68)	(\$1,872.95)	(\$3,058.33)	(\$8,828.32)
TCC	\$5,486.24	\$3,998.17	\$2,861.80	\$8,595.39	\$1,182.47	\$2,399.11	\$8,055.93
	19	20	21	22	23	24	25
ENERGY	(\$2,052.37)	(\$566.49)	(\$1,937.59)	(\$3,818.31)	(\$7,884.11)	(\$4,397.07)	(\$9,689.38)
TRANSMISSION SERVICE	(\$458.72)	(\$396.63)	(\$439.99)	(\$606.65)	(\$631.00)	(\$716.88)	(\$660.20)
UPLIFT	(\$5.23)	\$159.70	(\$1.86)	\$0.02	(\$0.01)	\$287.81	(\$1.55)
RESIDUALS	\$3,022.04	\$2,869.74	\$463.27	\$1,288.91	\$6,560.68	\$3,133.02	\$6,845.93
ANCILLARY SERVICES	(\$2,291.31)	(\$1,400.97)	(\$3,818.24)	(\$2,706.68)	(\$7,217.07)	(\$4,165.25)	(\$3,019.92)
TCC	\$1,617.17	\$831.52	\$3,165.56	\$1,810.58	\$6,284.24	\$3,117.55	\$2,033.11
	26	27	28	29	30	31	
ENERGY	(\$37,934.84)	\$19,616.01	(\$11,201.26)	(\$18,049.98)	\$5,916.75	\$972.45	
TRANSMISSION SERVICE	(\$653.40)	\$5,350.66	(\$775.70)	(\$685.72)	(\$294.53)	(\$657.41)	
UPLIFT	\$0.04	\$0.00	(\$28.64)	(\$61.32)	\$908.25	\$5,709.49	
RESIDUALS	\$34,595.70	\$19,764.29	\$7,684.86	\$17,324.22	\$4,037.51	\$11,734.93	
ANCILLARY SERVICES	\$5,122.31	\$5,980.46	\$6,924.75	\$4,545.68	(\$1,478.35)	(\$10,576.08)	
TCC	(\$6,092.63)	\$1,346.22	(\$8,054.43)	(\$5,538.22)	\$1,094.01	\$9,589.18	



SETTLEMENTS REPORT
 October 2020 Settlement Adjustment
 March 5, 2021

Initial Settlement – Market Supply Analysis

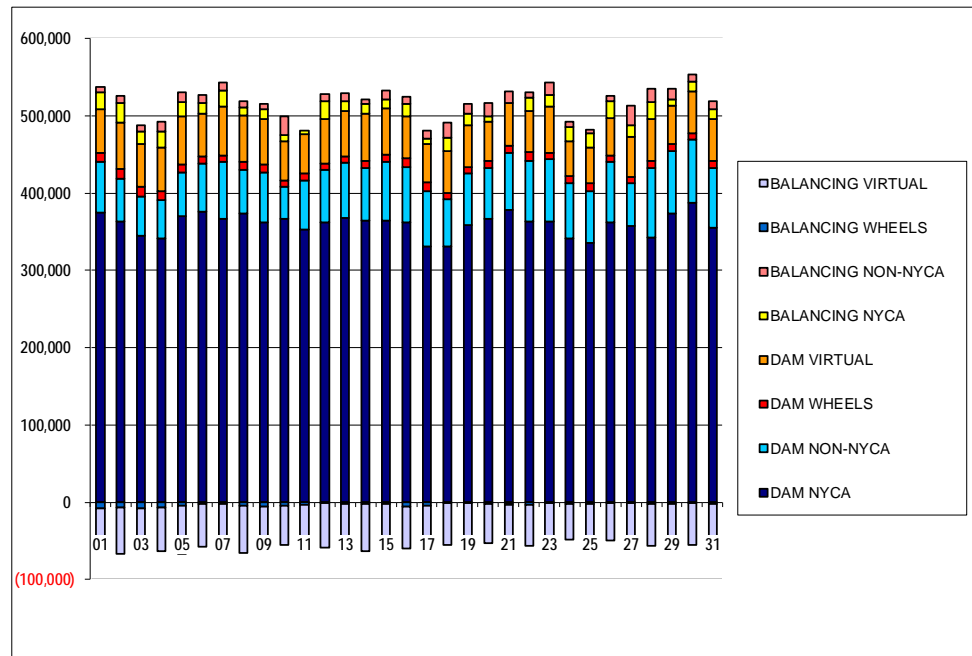
	MONDAY	TUESDAY	WEDNESDAY	THURSDAY	FRIDAY	SATURDAY	SUNDAY
				1	2	3	4
DAM NYCA				374,643	363,898	344,995	341,970
DAM NON-NYCA				65,756	55,261	51,030	49,162
DAM WHEELS				11,932	12,152	12,451	11,101
DAM VIRTUAL				55,817	59,503	55,419	56,572
BALANCING NYCA				22,698	25,519	16,523	21,445
BALANCING NON-NYCA				6,965	9,174	7,980	12,230
BALANCING WHEELS				(7,432)	(6,981)	(7,384)	(6,273)
BALANCING VIRTUAL				(55,817)	(59,503)	(55,419)	(56,572)
	5	6	7	8	9	10	11
DAM NYCA	370,284	375,601	367,105	373,272	362,259	366,685	352,621
DAM NON-NYCA	56,375	63,204	73,477	57,121	64,342	41,065	64,280
DAM WHEELS	10,268	8,533	8,187	9,815	10,815	9,129	8,511
DAM VIRTUAL	62,732	55,546	63,202	60,213	58,811	50,793	50,669
BALANCING NYCA	17,600	14,424	21,458	10,449	12,365	7,678	3,850
BALANCING NON-NYCA	13,105	10,179	10,305	8,617	6,408	24,263	(266)
BALANCING WHEELS	(4,311)	(2,414)	(2,094)	(4,933)	(5,449)	(4,105)	(2,488)
BALANCING VIRTUAL	(62,732)	(55,546)	(63,202)	(60,213)	(58,811)	(50,793)	(50,669)
	12	13	14	15	16	17	18
DAM NYCA	361,822	368,186	364,042	365,060	362,446	330,524	331,346
DAM NON-NYCA	68,821	71,164	68,403	75,777	70,906	72,565	60,616
DAM WHEELS	7,947	8,488	9,885	8,515	12,413	11,316	8,338
DAM VIRTUAL	57,348	58,963	60,671	60,124	54,125	49,714	54,513
BALANCING NYCA	23,135	12,060	13,003	11,808	16,146	6,945	16,755
BALANCING NON-NYCA	8,865	10,997	5,514	11,803	8,261	9,325	20,289
BALANCING WHEELS	(1,483)	(1,917)	(2,675)	(1,765)	(5,220)	(4,116)	(1,339)
BALANCING VIRTUAL	(57,348)	(58,963)	(60,671)	(60,124)	(54,125)	(49,714)	(54,513)
	19	20	21	22	23	24	25
DAM NYCA	359,112	367,334	378,694	363,484	363,386	341,578	335,196
DAM NON-NYCA	66,238	65,767	73,931	78,820	80,238	70,949	67,728
DAM WHEELS	8,647	8,921	9,255	10,567	8,565	9,814	9,561
DAM VIRTUAL	54,030	50,844	54,612	53,396	59,741	45,314	46,666
BALANCING NYCA	14,257	6,838	(723)	17,023	15,430	18,556	18,495
BALANCING NON-NYCA	12,980	16,993	15,283	7,624	16,175	6,931	4,620
BALANCING WHEELS	(1,447)	(1,808)	(2,137)	(3,367)	(1,365)	(2,614)	(2,361)
BALANCING VIRTUAL	(54,030)	(50,844)	(54,612)	(53,396)	(59,741)	(45,314)	(46,666)
	26	27	28	29	30	31	
DAM NYCA	362,643	357,914	343,021	373,683	387,116	355,580	
DAM NON-NYCA	78,375	54,492	89,136	80,526	82,654	76,937	
DAM WHEELS	8,075	8,576	9,254	8,969	7,791	8,736	
DAM VIRTUAL	48,198	51,471	54,175	49,670	54,360	54,853	
BALANCING NYCA	21,942	15,964	22,964	8,829	11,802	12,428	
BALANCING NON-NYCA	6,499	24,724	16,680	13,909	9,596	10,159	
BALANCING WHEELS	(875)	(1,391)	(2,054)	(1,815)	(591)	(1,661)	
BALANCING VIRTUAL	(48,198)	(51,471)	(54,175)	(49,670)	(54,360)	(54,853)	



SETTLEMENTS REPORT
 October 2020 Settlement Adjustment
 March 5, 2021

4-Month Settlement Adjustment – Market Supply Analysis

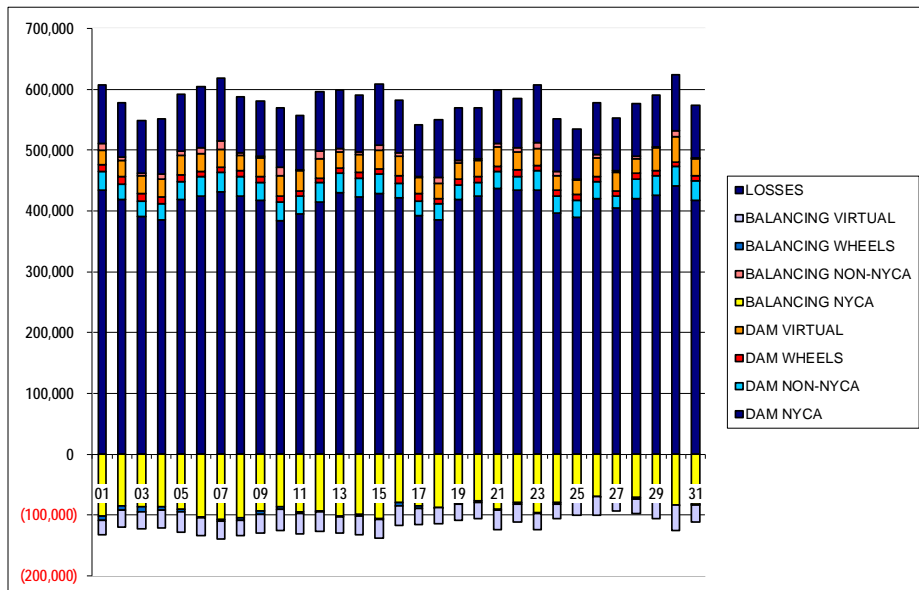
	MONDAY	TUESDAY	WEDNESDAY	THURSDAY	FRIDAY	SATURDAY	SUNDAY
				1	2	3	4
DAM NYCA				374,643	363,898	344,995	341,970
DAM NON-NYCA				65,756	55,261	51,030	49,162
DAM WHEELS				11,932	12,152	12,451	11,101
DAM VIRTUAL				55,817	59,503	55,419	56,572
BALANCING NYCA				22,571	25,412	16,376	21,375
BALANCING NON-NYCA				6,965	9,174	7,980	12,230
BALANCING WHEELS				(7,432)	(6,981)	(7,384)	(6,273)
BALANCING VIRTUAL				(55,817)	(59,503)	(55,419)	(56,572)
	5	6	7	8	9	10	11
DAM NYCA	370,284	375,601	367,105	373,272	362,259	366,685	352,621
DAM NON-NYCA	56,375	63,204	73,477	57,121	64,342	41,065	64,280
DAM WHEELS	10,268	8,533	8,187	9,815	10,815	9,129	8,511
DAM VIRTUAL	62,732	55,546	63,202	60,213	58,811	50,793	50,669
BALANCING NYCA	17,774	14,293	21,285	10,269	12,402	7,667	4,554
BALANCING NON-NYCA	13,105	10,179	10,305	8,617	6,408	24,263	(266)
BALANCING WHEELS	(4,311)	(2,414)	(2,094)	(4,933)	(5,449)	(4,105)	(2,488)
BALANCING VIRTUAL	(62,732)	(55,546)	(63,202)	(60,213)	(58,811)	(50,793)	(50,669)
	12	13	14	15	16	17	18
DAM NYCA	361,822	368,186	364,042	365,060	362,446	330,524	331,346
DAM NON-NYCA	68,821	71,164	68,403	75,777	70,906	72,565	60,616
DAM WHEELS	7,947	8,488	9,885	8,515	12,413	11,316	8,338
DAM VIRTUAL	57,348	58,963	60,671	60,124	54,125	49,714	54,513
BALANCING NYCA	23,016	12,130	12,969	11,816	16,161	6,952	16,774
BALANCING NON-NYCA	8,865	10,997	5,514	11,803	8,261	9,325	20,289
BALANCING WHEELS	(1,483)	(1,917)	(2,675)	(1,765)	(5,220)	(4,116)	(1,138)
BALANCING VIRTUAL	(57,348)	(58,963)	(60,671)	(60,124)	(54,125)	(49,714)	(54,513)
	19	20	21	22	23	24	25
DAM NYCA	359,112	367,334	378,694	363,484	363,386	341,578	335,196
DAM NON-NYCA	66,238	65,767	73,931	78,820	80,238	70,949	67,728
DAM WHEELS	8,647	8,921	9,255	10,567	8,565	9,814	9,561
DAM VIRTUAL	54,030	50,844	54,612	53,396	59,741	45,314	46,666
BALANCING NYCA	14,298	6,922	(839)	16,867	15,275	18,386	18,268
BALANCING NON-NYCA	12,980	16,993	15,283	7,624	16,175	6,931	4,620
BALANCING WHEELS	(1,447)	(1,808)	(2,137)	(3,367)	(1,365)	(2,614)	(2,361)
BALANCING VIRTUAL	(54,030)	(50,844)	(54,612)	(53,396)	(59,741)	(45,314)	(46,666)
	26	27	28	29	30	31	
DAM NYCA	362,643	357,914	343,021	373,683	387,116	355,580	
DAM NON-NYCA	78,375	54,492	89,136	80,526	82,654	76,937	
DAM WHEELS	8,075	8,576	9,254	8,969	7,791	8,736	
DAM VIRTUAL	48,198	51,471	54,175	49,670	54,360	54,853	
BALANCING NYCA	21,779	15,810	22,821	8,761	12,000	12,551	
BALANCING NON-NYCA	6,499	24,724	16,680	13,909	9,596	10,159	
BALANCING WHEELS	(875)	(1,391)	(2,054)	(1,815)	(591)	(1,661)	
BALANCING VIRTUAL	(48,198)	(51,471)	(54,175)	(49,670)	(54,360)	(54,853)	



SETTLEMENTS REPORT
 October 2020 Settlement Adjustment
 March 5, 2021

Initial Settlement – Market Withdrawals Analysis

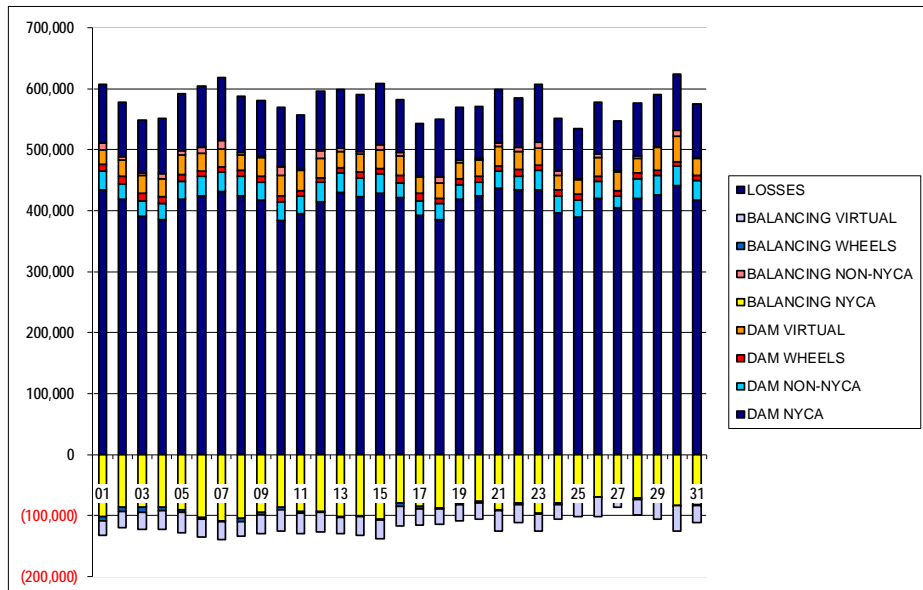
	MONDAY	TUESDAY	WEDNESDAY	THURSDAY	FRIDAY	SATURDAY	SUNDAY
				1	2	3	4
DAM NYCA				434,873	418,575	390,743	384,679
DAM NON-NYCA				29,398	25,381	25,538	27,151
DAM WHEELS				11,932	12,152	12,451	11,101
DAM VIRTUAL				23,290	26,703	28,793	29,866
BALANCING NYCA				(101,675)	(85,760)	(86,935)	(85,871)
BALANCING NON-NYCA				11,138	6,475	4,408	7,881
BALANCING WHEELS				(7,432)	(6,981)	(7,384)	(6,273)
BALANCING VIRTUAL				(23,290)	(26,703)	(28,793)	(29,866)
UFE/LOSSES				96,328	89,182	86,775	90,967
	5	6	7	8	9	10	11
DAM NYCA	419,026	424,340	430,803	424,760	417,121	383,958	395,328
DAM NON-NYCA	29,796	31,937	33,116	32,106	29,131	30,965	29,034
DAM WHEELS	10,268	8,533	8,187	9,815	10,815	9,129	8,511
DAM VIRTUAL	33,054	29,390	29,576	24,490	29,808	34,603	33,427
BALANCING NYCA	(90,836)	(102,759)	(108,043)	(104,489)	(94,149)	(86,593)	(94,649)
BALANCING NON-NYCA	6,538	9,877	13,304	4,512	3,503	12,877	2,025
BALANCING WHEELS	(4,311)	(2,414)	(2,094)	(4,933)	(5,449)	(4,105)	(2,488)
BALANCING VIRTUAL	(33,054)	(29,390)	(29,576)	(24,490)	(29,808)	(34,603)	(33,427)
UFE/LOSSES	92,840	100,012	103,165	92,570	89,767	98,485	88,748
	12	13	14	15	16	17	18
DAM NYCA	414,607	430,023	423,182	428,196	421,855	392,889	395,158
DAM NON-NYCA	31,573	32,271	30,444	32,450	23,811	23,877	27,085
DAM WHEELS	7,947	8,488	9,885	8,515	12,413	11,316	8,338
DAM VIRTUAL	32,149	26,334	29,828	30,278	32,445	26,542	25,397
BALANCING NYCA	(93,281)	(101,247)	(99,702)	(105,589)	(80,002)	(85,136)	(87,430)
BALANCING NON-NYCA	11,554	5,861	4,314	8,629	4,658	2,211	8,525
BALANCING WHEELS	(1,483)	(1,917)	(2,675)	(1,765)	(5,220)	(4,116)	(1,138)
BALANCING VIRTUAL	(32,149)	(26,334)	(29,828)	(30,278)	(32,445)	(26,542)	(25,397)
UFE/LOSSES	98,189	95,499	92,723	100,762	87,437	85,517	95,669
	19	20	21	22	23	24	25
DAM NYCA	418,576	424,639	436,493	434,337	433,806	396,233	390,230
DAM NON-NYCA	24,487	22,550	27,957	22,808	32,252	28,568	27,410
DAM WHEELS	8,647	8,921	9,255	10,567	8,565	9,814	9,561
DAM VIRTUAL	27,497	27,219	32,302	28,762	27,461	23,795	23,337
BALANCING NYCA	(80,446)	(77,138)	(90,365)	(79,360)	(95,880)	(79,514)	(75,415)
BALANCING NON-NYCA	3,939	3,052	5,318	7,223	10,756	6,554	2,134
BALANCING WHEELS	(1,447)	(1,808)	(2,137)	(3,367)	(1,365)	(2,614)	(2,361)
BALANCING VIRTUAL	(27,497)	(27,219)	(32,302)	(28,762)	(27,461)	(23,795)	(23,337)
UFE/LOSSES	86,031	83,829	87,782	81,942	94,295	86,174	81,678
	26	27	28	29	30	31	
DAM NYCA	420,617	404,655	419,838	425,260	440,930	416,784	
DAM NON-NYCA	28,216	20,114	32,441	32,416	32,000	32,332	
DAM WHEELS	8,075	8,576	9,254	8,969	7,791	8,736	
DAM VIRTUAL	30,887	30,640	24,774	36,754	41,394	28,157	
BALANCING NYCA	(69,148)	(60,963)	(71,236)	(67,226)	(83,193)	(82,171)	
BALANCING NON-NYCA	5,477	2,224	3,691	1,770	9,437	1,930	
BALANCING WHEELS	(875)	(1,391)	(2,054)	(1,815)	(591)	(1,661)	
BALANCING VIRTUAL	(30,887)	(30,640)	(24,774)	(36,754)	(41,394)	(28,157)	
UFE/LOSSES	84,298	87,063	87,068	84,727	91,995	86,229	



SETTLEMENTS REPORT
 October 2020 Settlement Adjustment
 March 5, 2021

4-Month Settlement Adjustment – Market Withdrawals Analysis

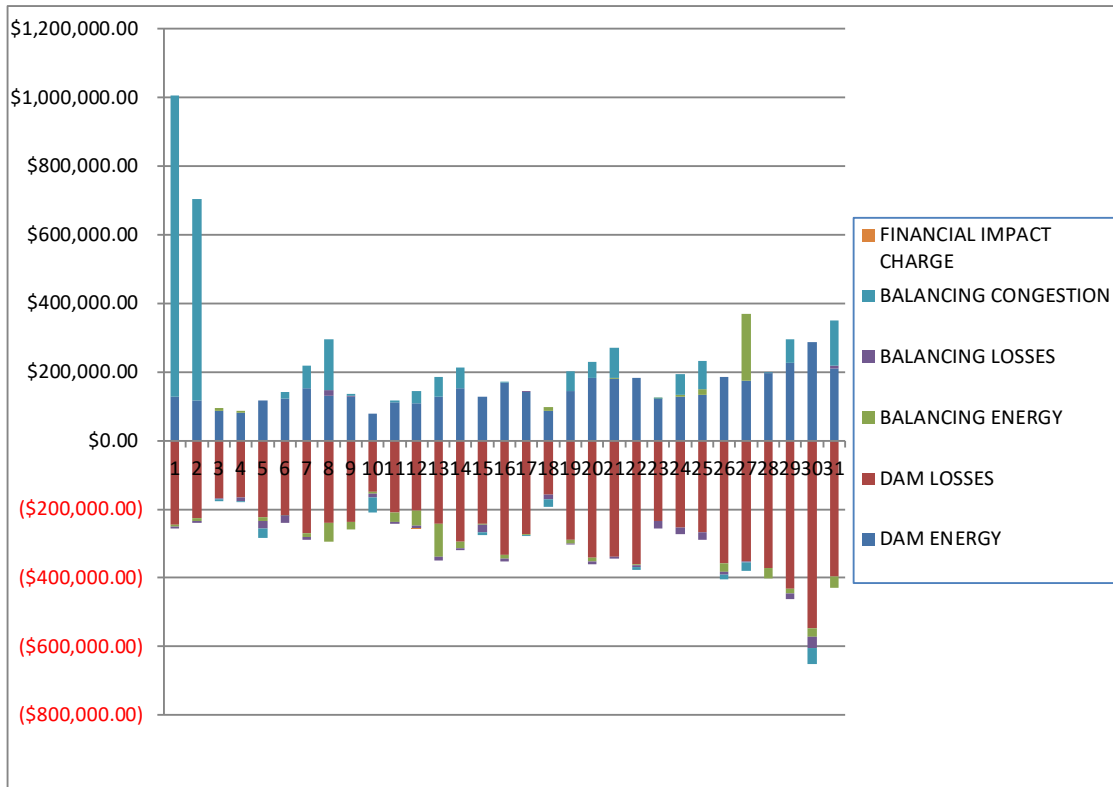
	MONDAY	TUESDAY	WEDNESDAY	THURSDAY	FRIDAY	SATURDAY	SUNDAY
				1	2	3	4
DAM NYCA				434,873	418,575	390,743	384,679
DAM NON-NYCA				29,398	25,381	25,538	27,151
DAM WHEELS				11,932	12,152	12,451	11,101
DAM VIRTUAL				23,290	26,703	28,793	29,866
BALANCING NYCA				(101,882)	(85,931)	(87,137)	(86,019)
BALANCING NON-NYCA				11,138	6,475	4,408	7,881
BALANCING WHEELS				(7,432)	(6,981)	(7,384)	(6,273)
BALANCING VIRTUAL				(23,290)	(26,703)	(28,793)	(29,866)
UFE/LOSSES				96,408	89,246	86,829	91,045
	5	6	7	8	9	10	11
DAM NYCA	419,026	424,340	430,803	424,760	417,121	383,958	395,328
DAM NON-NYCA	29,796	31,937	33,116	32,106	29,131	30,965	29,034
DAM WHEELS	10,268	8,533	8,187	9,815	10,815	9,129	8,511
DAM VIRTUAL	33,054	29,390	29,576	24,490	29,808	34,603	33,427
BALANCING NYCA	(90,735)	(103,053)	(108,319)	(104,773)	(94,238)	(86,746)	(93,972)
BALANCING NON-NYCA	6,538	9,877	13,304	4,512	3,503	12,877	2,025
BALANCING WHEELS	(4,311)	(2,414)	(2,094)	(4,933)	(5,449)	(4,105)	(2,488)
BALANCING VIRTUAL	(33,054)	(29,390)	(29,576)	(24,490)	(29,808)	(34,603)	(33,427)
UFE/LOSSES	92,913	100,176	103,268	92,677	89,894	98,627	88,774
	12	13	14	15	16	17	18
DAM NYCA	414,607	430,023	423,182	428,196	421,855	392,889	385,158
DAM NON-NYCA	31,573	32,271	30,444	32,450	23,811	23,877	27,085
DAM WHEELS	7,947	8,488	9,885	8,515	12,413	11,316	8,338
DAM VIRTUAL	32,149	26,334	29,828	30,278	32,445	26,542	25,397
BALANCING NYCA	(93,507)	(101,333)	(99,885)	(105,747)	(80,152)	(85,287)	(87,567)
BALANCING NON-NYCA	11,554	5,861	4,314	8,629	4,658	2,211	8,525
BALANCING WHEELS	(1,483)	(1,917)	(2,675)	(1,765)	(5,220)	(4,116)	(1,138)
BALANCING VIRTUAL	(32,149)	(26,334)	(29,828)	(30,278)	(32,445)	(26,542)	(25,397)
UFE/LOSSES	98,297	95,655	92,872	100,928	87,602	85,675	95,825
	19	20	21	22	23	24	25
DAM NYCA	418,576	424,639	436,493	434,337	433,806	396,233	390,230
DAM NON-NYCA	24,487	22,550	27,957	22,808	32,252	28,568	27,410
DAM WHEELS	8,647	8,921	9,255	10,567	8,565	9,814	9,561
DAM VIRTUAL	27,497	27,219	32,302	28,762	27,461	23,795	23,337
BALANCING NYCA	(80,594)	(77,224)	(90,526)	(79,564)	(96,209)	(79,844)	(75,767)
BALANCING NON-NYCA	3,939	3,052	5,318	7,223	10,756	6,554	2,134
BALANCING WHEELS	(1,447)	(1,808)	(2,137)	(3,367)	(1,365)	(2,614)	(2,361)
BALANCING VIRTUAL	(27,497)	(27,219)	(32,302)	(28,762)	(27,461)	(23,795)	(23,337)
UFE/LOSSES	86,220	83,999	87,827	81,991	94,469	86,334	81,804
	26	27	28	29	30	31	
DAM NYCA	420,617	404,655	419,838	425,260	440,930	416,784	
DAM NON-NYCA	28,216	20,114	32,441	32,416	32,000	32,332	
DAM WHEELS	8,075	8,576	9,254	8,969	7,791	8,736	
DAM VIRTUAL	30,887	30,640	24,774	36,754	41,394	28,157	
BALANCING NYCA	(69,500)	(54,658)	(71,594)	(67,539)	(83,131)	(82,441)	
BALANCING NON-NYCA	5,477	2,224	3,691	1,770	9,437	1,930	
BALANCING WHEELS	(875)	(1,391)	(2,054)	(1,815)	(591)	(1,661)	
BALANCING VIRTUAL	(30,887)	(30,640)	(24,774)	(36,754)	(41,394)	(28,157)	
UFE/LOSSES	84,487	80,605	87,283	84,972	92,130	86,623	



SETTLEMENTS REPORT
 October 2020 Settlement Adjustment
 March 5, 2021

Initial Settlement – Market Residuals Analysis

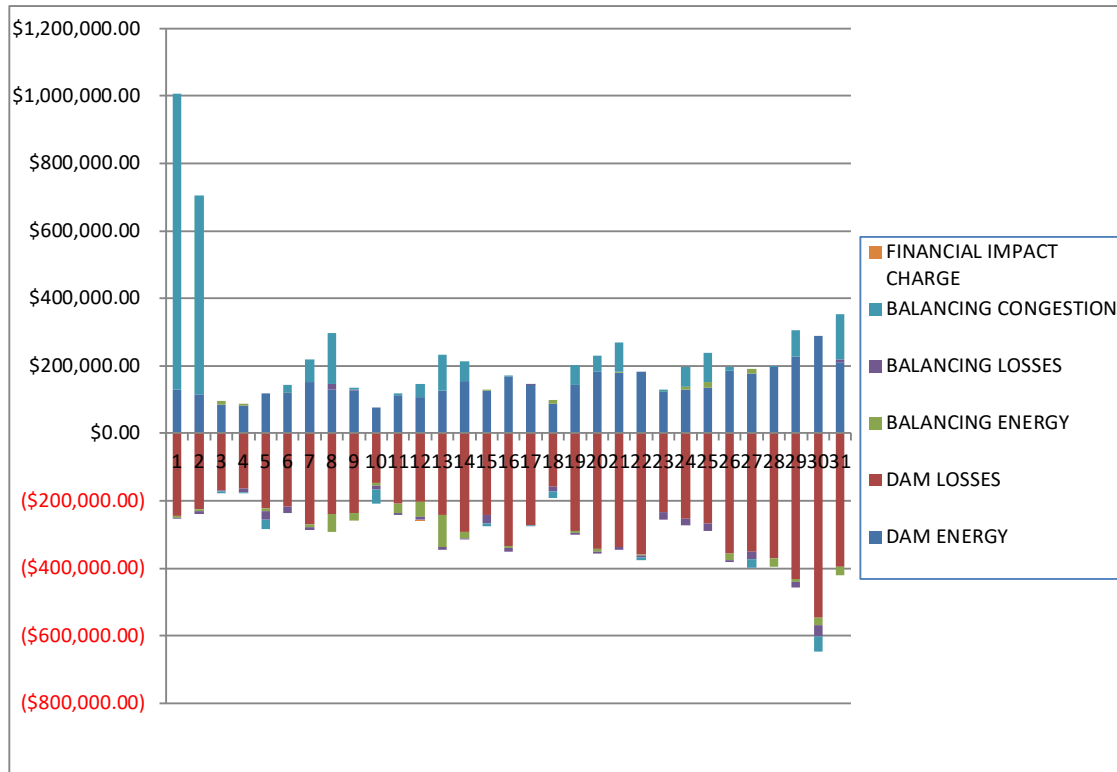
	MONDAY	TUESDAY	WEDNESDAY	THURSDAY	FRIDAY	SATURDAY	SUNDAY
				1	2	3	4
DAM ENERGY				\$128,532.16	\$116,658.38	\$85,616.86	\$81,508.57
DAM LOSSES				(\$245,247.41)	(\$225,902.27)	(\$169,758.29)	(\$164,911.56)
BALANCING ENERGY				(\$6,046.63)	(\$7,256.45)	\$8,098.37	\$5,799.29
BALANCING LOSSES				(\$4,155.68)	(\$6,339.76)	(\$2,034.33)	(\$10,371.59)
BALANCING CONGESTION				\$878,029.21	\$587,171.62	(\$5,600.40)	(\$925.12)
FINANCIAL IMPACT CHARGE				\$0.00	\$0.00	\$0.00	\$0.00
	5	6	7	8	9	10	11
DAM ENERGY	\$116,922.10	\$121,230.22	\$152,589.42	\$130,563.35	\$126,900.55	\$77,287.09	\$112,217.89
DAM LOSSES	(\$223,299.61)	(\$217,238.48)	(\$270,770.04)	(\$240,541.46)	(\$236,146.89)	(\$147,865.74)	(\$208,296.13)
BALANCING ENERGY	(\$9,861.99)	(\$1,662.69)	(\$9,262.96)	(\$53,779.13)	(\$23,720.82)	(\$7,602.85)	(\$28,208.24)
BALANCING LOSSES	(\$22,977.53)	(\$20,695.67)	(\$7,782.10)	\$16,417.22	\$3,301.12	(\$11,023.05)	(\$4,627.55)
BALANCING CONGESTION	(\$28,415.32)	\$21,501.04	\$67,001.75	\$149,175.42	\$5,181.95	(\$42,068.19)	\$5,132.60
FINANCIAL IMPACT CHARGE	\$0.00	\$0.00	\$0.00	\$0.00	\$0.00	\$0.00	\$0.00
	12	13	14	15	16	17	18
DAM ENERGY	\$107,583.15	\$127,391.85	\$153,499.49	\$127,577.38	\$168,732.64	\$142,379.37	\$86,206.87
DAM LOSSES	(\$203,976.76)	(\$242,216.98)	(\$293,726.65)	(\$243,126.12)	(\$333,368.34)	(\$273,083.60)	(\$157,695.11)
BALANCING ENERGY	(\$44,353.22)	(\$97,484.33)	(\$19,119.21)	(\$1,530.75)	(\$9,397.35)	(\$1,306.64)	\$10,482.82
BALANCING LOSSES	(\$8,446.17)	(\$10,137.75)	(\$5,296.92)	(\$23,074.07)	(\$10,610.97)	\$2,490.71	(\$14,412.68)
BALANCING CONGESTION	\$37,456.11	\$59,404.32	\$59,090.29	(\$8,787.56)	\$646.16	(\$1,869.69)	(\$20,299.96)
FINANCIAL IMPACT CHARGE	(\$14.52)	\$0.00	\$0.00	\$0.00	\$0.00	\$0.00	\$0.00
	19	20	21	22	23	24	25
DAM ENERGY	\$144,663.48	\$181,676.86	\$179,339.56	\$183,059.75	\$122,828.18	\$128,021.68	\$134,501.94
DAM LOSSES	(\$288,288.97)	(\$341,882.39)	(\$337,209.85)	(\$359,716.97)	(\$233,935.88)	(\$253,290.58)	(\$267,311.63)
BALANCING ENERGY	(\$10,773.82)	(\$11,264.18)	\$2,187.55	(\$2,260.96)	\$162.76	\$6,144.92	\$15,623.63
BALANCING LOSSES	(\$4,526.56)	(\$8,136.18)	(\$7,694.18)	(\$6,114.12)	(\$21,827.34)	(\$20,665.50)	(\$22,943.35)
BALANCING CONGESTION	\$58,603.93	\$48,410.55	\$87,937.65	(\$9,072.14)	\$848.85	\$58,654.33	\$82,504.83
FINANCIAL IMPACT CHARGE	\$0.00	\$0.00	\$0.00	\$0.00	\$0.00	\$0.00	\$0.00
	26	27	28	29	30	31	
DAM ENERGY	\$184,582.43	\$175,776.31	\$195,531.44	\$227,822.96	\$287,737.80	\$209,675.16	
DAM LOSSES	(\$357,119.65)	(\$351,370.91)	(\$370,108.71)	(\$432,932.25)	(\$547,880.43)	(\$395,659.13)	
BALANCING ENERGY	(\$24,157.40)	\$193,569.62	(\$32,010.97)	(\$11,500.06)	(\$24,763.95)	(\$33,743.29)	
BALANCING LOSSES	(\$8,532.28)	(\$4,377.72)	\$466.92	(\$17,256.36)	(\$32,407.90)	\$8,405.38	
BALANCING CONGESTION	(\$14,528.18)	(\$24,319.71)	\$2,121.30	\$66,789.24	(\$46,536.49)	\$131,450.57	
FINANCIAL IMPACT CHARGE	\$0.00	\$0.00	\$0.00	\$0.00	\$0.00	\$0.00	



SETTLEMENTS REPORT
 October 2020 Settlement Adjustment
 March 5, 2021

4-Month Settlement Adjustment – Market Residuals Analysis

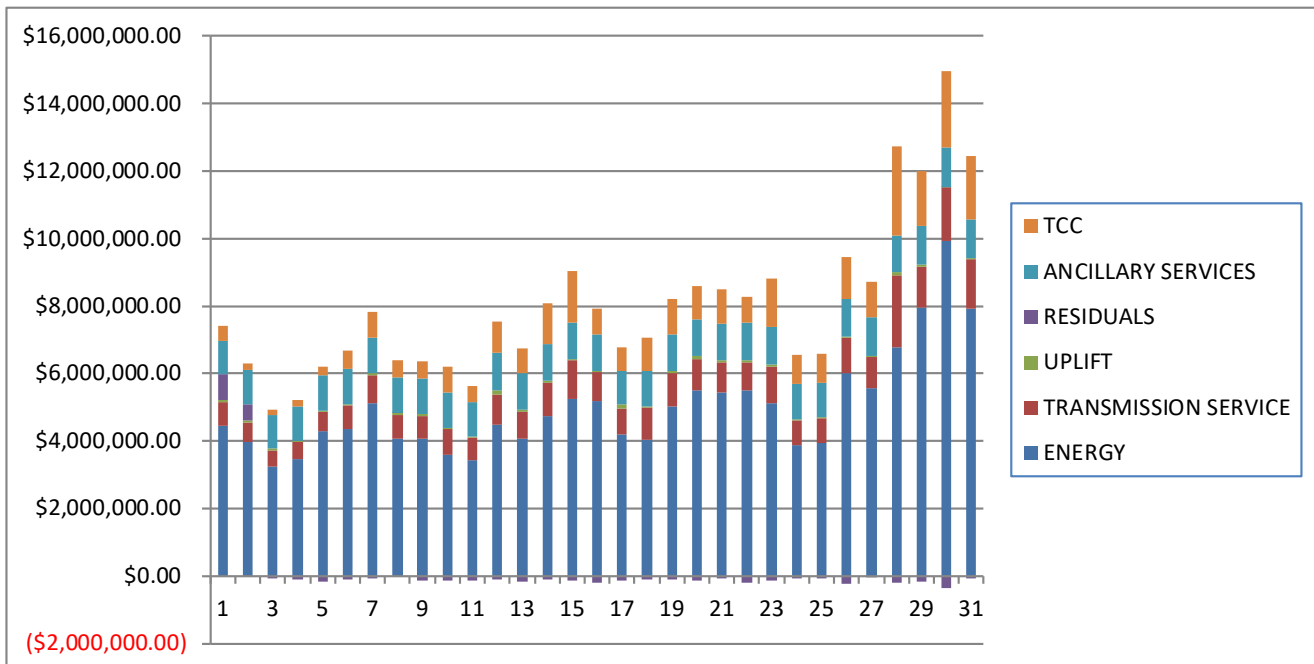
	MONDAY	TUESDAY	WEDNESDAY	THURSDAY	FRIDAY	SATURDAY	SUNDAY
				1	2	3	4
DAM ENERGY				\$128,532.16	\$116,658.38	\$85,616.86	\$81,508.57
DAM LOSSES				(\$245,247.41)	(\$225,902.28)	(\$169,758.29)	(\$164,911.55)
BALANCING ENERGY				(\$4,889.13)	(\$6,321.88)	\$9,011.64	\$6,923.15
BALANCING LOSSES				(\$4,010.43)	(\$6,352.22)	(\$1,960.93)	(\$10,382.61)
BALANCING CONGESTION				\$878,275.29	\$587,108.49	(\$5,574.39)	(\$925.11)
FINANCIAL IMPACT CHARGE				\$0.00	\$0.00	\$0.00	\$0.00
	5	6	7	8	9	10	11
DAM ENERGY	\$116,922.09	\$121,230.23	\$152,589.42	\$130,563.35	\$126,900.56	\$77,287.08	\$112,217.89
DAM LOSSES	(\$223,299.61)	(\$217,238.48)	(\$270,770.04)	(\$240,541.46)	(\$236,146.88)	(\$147,865.74)	(\$208,296.13)
BALANCING ENERGY	(\$8,595.08)	\$266.27	(\$8,342.23)	(\$51,888.45)	(\$21,959.06)	(\$6,592.41)	(\$27,991.61)
BALANCING LOSSES	(\$22,969.10)	(\$20,540.46)	(\$7,787.76)	\$16,320.52	\$3,301.45	(\$11,029.37)	(\$4,766.37)
BALANCING CONGESTION	(\$28,174.43)	\$21,947.07	\$66,971.14	\$149,087.42	\$5,003.14	(\$42,057.88)	\$5,165.25
FINANCIAL IMPACT CHARGE	\$0.00	\$0.00	\$0.00	\$0.00	\$0.00	\$0.00	\$0.00
	12	13	14	15	16	17	18
DAM ENERGY	\$107,583.15	\$127,391.86	\$153,499.48	\$127,577.38	\$168,732.64	\$142,379.36	\$86,206.86
DAM LOSSES	(\$203,976.77)	(\$242,216.98)	(\$293,726.65)	(\$243,126.12)	(\$333,368.34)	(\$273,083.60)	(\$157,695.11)
BALANCING ENERGY	(\$42,760.22)	(\$94,424.20)	(\$16,822.65)	\$791.22	(\$6,224.28)	\$881.67	\$12,185.59
BALANCING LOSSES	(\$8,502.45)	(\$9,655.36)	(\$5,117.23)	(\$23,136.31)	(\$10,458.65)	\$2,590.27	(\$14,361.18)
BALANCING CONGESTION	\$37,516.09	\$104,182.45	\$60,165.31	(\$8,837.72)	\$643.88	(\$1,866.37)	(\$20,449.75)
FINANCIAL IMPACT CHARGE	(\$14.52)	\$0.00	\$0.00	\$0.00	\$0.00	\$0.00	\$0.00
	19	20	21	22	23	24	25
DAM ENERGY	\$144,663.47	\$181,676.86	\$179,339.56	\$183,059.75	\$122,828.19	\$128,021.68	\$134,501.94
DAM LOSSES	(\$288,288.96)	(\$341,882.39)	(\$337,209.84)	(\$359,716.97)	(\$233,935.88)	(\$253,290.58)	(\$267,311.63)
BALANCING ENERGY	(\$7,477.00)	(\$8,198.15)	\$2,771.59	(\$1,302.65)	\$2,364.73	\$8,619.62	\$18,215.99
BALANCING LOSSES	(\$4,338.61)	(\$7,892.40)	(\$7,435.81)	(\$5,697.13)	(\$21,347.96)	(\$20,114.71)	(\$22,315.05)
BALANCING CONGESTION	\$58,141.20	\$47,970.48	\$87,558.50	(\$9,158.53)	\$4,728.17	\$58,761.86	\$86,130.10
FINANCIAL IMPACT CHARGE	\$0.00	\$0.00	\$0.00	\$0.00	\$0.00	\$0.00	\$0.00
	26	27	28	29	30	31	
DAM ENERGY	\$184,582.44	\$175,776.31	\$195,531.44	\$227,822.95	\$287,737.81	\$209,675.16	
DAM LOSSES	(\$357,119.65)	(\$351,370.92)	(\$370,108.71)	(\$432,932.26)	(\$547,880.43)	(\$395,659.12)	
BALANCING ENERGY	(\$19,335.31)	\$15,532.91	(\$25,482.74)	(\$6,794.36)	(\$21,176.84)	(\$25,486.32)	
BALANCING LOSSES	(\$6,405.67)	(\$23,334.39)	\$1,297.46	(\$16,449.24)	(\$32,080.49)	\$9,650.88	
BALANCING CONGESTION	\$13,118.81	(\$24,911.00)	\$2,447.39	\$78,600.66	(\$46,413.51)	\$133,683.02	
FINANCIAL IMPACT CHARGE	\$0.00	\$0.00	\$0.00	\$0.00	\$0.00	\$0.00	



SETTLEMENTS REPORT
 October 2020 Settlement Adjustment
 March 5, 2021

Initial Settlement – Market Costs Analysis

	MONDAY	TUESDAY	WEDNESDAY	THURSDAY	FRIDAY	SATURDAY	SUNDAY
				1	2	3	4
ENERGY				\$4,460,366.63	\$3,987,713.84	\$3,230,952.44	\$3,468,040.13
TRANSMISSION SERVICE				\$677,643.25	\$561,729.32	\$492,966.02	\$507,325.22
UPLIFT				\$82,642.51	\$71,089.14	\$45,959.89	\$45,145.47
RESIDUALS				\$751,111.65	\$464,331.52	(\$83,677.79)	(\$88,900.41)
ANCILLARY SERVICES				\$1,008,890.37	\$1,017,905.87	\$1,004,963.97	\$1,004,429.35
TCC				\$442,984.19	\$192,868.98	\$155,503.12	\$198,515.93
	5	6	7	8	9	10	11
ENERGY	\$4,303,749.74	\$4,361,854.21	\$5,123,280.71	\$4,070,867.49	\$4,056,067.65	\$3,579,281.89	\$3,434,416.06
TRANSMISSION SERVICE	\$568,925.91	\$680,064.90	\$824,902.56	\$685,643.78	\$691,947.74	\$773,127.28	\$653,722.80
UPLIFT	\$36,799.85	\$46,442.36	\$54,246.13	\$63,873.81	\$63,538.03	\$44,746.27	\$48,796.40
RESIDUALS	(\$167,632.35)	(\$96,865.58)	(\$68,223.93)	\$1,835.40	(\$124,484.09)	(\$131,272.74)	(\$123,781.43)
ANCILLARY SERVICES	\$1,047,983.91	\$1,035,980.67	\$1,055,024.43	\$1,050,896.58	\$1,036,535.32	\$1,046,210.13	\$1,012,273.03
TCC	\$251,131.05	\$545,294.82	\$763,336.07	\$524,579.58	\$500,401.90	\$767,793.16	\$473,249.80
	12	13	14	15	16	17	18
ENERGY	\$4,480,843.30	\$4,054,637.41	\$4,748,312.69	\$5,248,477.27	\$5,177,939.71	\$4,182,743.85	\$4,037,132.48
TRANSMISSION SERVICE	\$904,470.16	\$812,614.98	\$977,599.45	\$1,152,438.61	\$853,504.13	\$767,767.94	\$956,350.67
UPLIFT	\$107,075.22	\$75,753.55	\$67,738.24	\$34,632.18	\$53,940.26	\$136,377.18	\$40,329.47
RESIDUALS	(\$111,751.41)	(\$163,042.89)	(\$105,553.00)	(\$148,941.12)	(\$183,997.86)	(\$131,389.85)	(\$95,718.06)
ANCILLARY SERVICES	\$1,134,974.48	\$1,074,814.95	\$1,063,648.60	\$1,081,322.62	\$1,065,819.82	\$996,588.58	\$1,034,658.57
TCC	\$904,934.79	\$723,453.44	\$1,225,303.92	\$1,505,795.85	\$767,826.25	\$691,554.47	\$1,006,530.79
	19	20	21	22	23	24	25
ENERGY	\$5,027,792.94	\$5,494,536.63	\$5,441,650.79	\$5,495,124.32	\$5,117,905.62	\$3,875,741.75	\$3,933,364.43
TRANSMISSION SERVICE	\$972,486.27	\$946,908.35	\$901,310.94	\$844,667.52	\$1,077,483.82	\$745,928.93	\$749,858.08
UPLIFT	\$80,464.21	\$72,012.86	\$59,898.99	\$51,970.74	\$80,491.52	\$16,162.80	\$32,435.67
RESIDUALS	(\$100,321.94)	(\$131,195.34)	(\$75,439.27)	(\$194,104.44)	(\$131,923.43)	(\$81,135.15)	(\$57,624.58)
ANCILLARY SERVICES	\$1,069,238.48	\$1,079,878.31	\$1,082,262.32	\$1,119,773.12	\$1,120,775.04	\$1,056,215.85	\$1,005,630.31
TCC	\$1,067,943.15	\$1,011,200.73	\$995,064.42	\$767,810.17	\$1,410,346.41	\$874,339.49	\$848,231.78
	26	27	28	29	30	31	
ENERGY	\$6,015,848.22	\$5,566,917.27	\$6,786,232.52	\$7,960,219.34	\$9,915,454.71	\$7,917,137.42	
TRANSMISSION SERVICE	\$1,044,084.40	\$909,478.41	\$2,110,283.50	\$1,200,330.60	\$1,598,527.70	\$1,483,878.84	
UPLIFT	\$32,298.68	\$55,320.27	\$93,611.27	\$61,144.79	\$17,421.32	\$33,638.29	
RESIDUALS	(\$219,755.08)	(\$10,722.41)	(\$204,000.02)	(\$167,076.47)	(\$363,850.97)	(\$79,871.31)	
ANCILLARY SERVICES	\$1,111,660.10	\$1,134,579.18	\$1,087,858.53	\$1,142,236.81	\$1,161,802.27	\$1,133,364.06	
TCC	\$1,244,677.72	\$1,041,093.09	\$2,648,961.94	\$1,644,438.32	\$2,278,221.68	\$1,881,730.39	



SETTLEMENTS REPORT
 October 2020 Settlement Adjustment
 March 5, 2021

4-Month Settlement Adjustment – Market Costs Analysis

	MONDAY	TUESDAY	WEDNESDAY	THURSDAY	FRIDAY	SATURDAY	SUNDAY
				1	2	3	4
ENERGY				\$4,457,520.55	\$3,985,627.48	\$3,227,708.42	\$3,466,574.15
TRANSMISSION SERVICE				\$676,874.49	\$560,970.83	\$492,043.02	\$506,478.52
UPLIFT				\$82,643.12	\$71,089.13	\$45,959.89	\$45,145.47
RESIDUALS				\$752,660.48	\$465,190.49	(\$82,665.11)	(\$87,787.55)
ANCILLARY SERVICES				\$1,019,864.54	\$1,021,424.64	\$1,003,634.63	\$1,003,238.03
TCC				\$430,891.45	\$188,255.97	\$155,503.12	\$198,515.93
	5	6	7	8	9	10	11
ENERGY	\$4,306,691.03	\$4,357,830.83	\$5,121,267.69	\$4,066,019.28	\$4,055,572.80	\$3,578,628.91	\$3,439,767.57
TRANSMISSION SERVICE	\$568,351.21	\$679,327.50	\$824,206.46	\$685,015.03	\$691,528.83	\$772,643.12	\$654,023.31
UPLIFT	\$36,799.85	\$46,442.34	\$54,246.14	\$63,911.20	\$64,600.51	\$44,749.16	\$48,796.40
RESIDUALS	(\$166,116.13)	(\$94,335.37)	(\$67,339.47)	\$3,541.38	(\$122,900.79)	(\$130,258.32)	(\$123,670.97)
ANCILLARY SERVICES	\$1,047,225.01	\$1,034,601.82	\$1,051,750.32	\$1,048,540.73	\$1,034,956.01	\$1,039,941.23	\$1,010,892.04
TCC	\$251,131.05	\$545,583.61	\$765,569.65	\$525,985.96	\$501,379.29	\$773,350.14	\$475,250.42
	12	13	14	15	16	17	18
ENERGY	\$4,477,810.19	\$4,006,853.24	\$4,744,394.03	\$5,246,680.09	\$5,175,170.73	\$4,180,782.61	\$4,036,852.09
TRANSMISSION SERVICE	\$903,943.04	\$812,146.18	\$976,602.83	\$1,151,914.30	\$853,034.25	\$767,321.11	\$955,819.13
UPLIFT	\$107,075.38	\$75,753.54	\$67,739.58	\$34,632.17	\$53,937.62	\$136,377.18	\$40,331.36
RESIDUALS	(\$110,154.72)	(\$114,722.23)	(\$102,001.74)	(\$146,731.55)	(\$180,674.75)	(\$129,098.67)	(\$94,113.59)
ANCILLARY SERVICES	\$1,128,695.54	\$1,070,145.58	\$1,059,362.82	\$1,071,958.94	\$1,063,946.87	\$993,530.25	\$1,025,830.25
TCC	\$910,421.03	\$727,451.61	\$1,228,165.72	\$1,514,391.24	\$769,008.72	\$693,953.58	\$1,014,586.72
	19	20	21	22	23	24	25
ENERGY	\$5,025,740.57	\$5,493,970.14	\$5,439,713.20	\$5,491,306.01	\$5,110,021.51	\$3,871,344.68	\$3,923,675.05
TRANSMISSION SERVICE	\$972,027.55	\$946,511.72	\$900,870.95	\$844,060.87	\$1,076,852.82	\$745,212.05	\$749,197.88
UPLIFT	\$80,458.98	\$72,172.56	\$59,897.13	\$51,970.76	\$80,491.51	\$16,450.61	\$32,434.12
RESIDUALS	(\$97,299.90)	(\$128,325.60)	(\$74,976.00)	(\$192,815.53)	(\$125,362.75)	(\$78,002.13)	(\$50,778.65)
ANCILLARY SERVICES	\$1,066,947.17	\$1,078,477.34	\$1,078,444.08	\$1,117,066.44	\$1,113,557.97	\$1,052,050.60	\$1,002,610.39
TCC	\$1,069,560.32	\$1,012,032.25	\$998,229.98	\$769,620.75	\$1,416,630.65	\$877,457.04	\$850,264.89
	26	27	28	29	30	31	
ENERGY	\$5,977,913.38	\$5,760,534.18	\$6,775,031.26	\$7,942,169.36	\$9,921,371.46	\$7,918,109.87	
TRANSMISSION SERVICE	\$1,043,431.00	\$914,829.07	\$2,109,507.80	\$1,199,644.88	\$1,598,233.17	\$1,483,221.43	
UPLIFT	\$32,298.72	\$55,320.27	\$93,582.63	\$61,083.47	\$18,329.57	\$39,347.78	
RESIDUALS	(\$185,159.38)	(\$208,307.09)	(\$196,315.16)	(\$149,752.25)	(\$359,813.46)	(\$68,136.38)	
ANCILLARY SERVICES	\$1,116,782.41	\$1,140,559.64	\$1,094,783.28	\$1,146,782.49	\$1,160,323.92	\$1,122,787.98	
TCC	\$1,238,585.09	\$1,042,439.31	\$2,640,907.51	\$1,638,900.10	\$2,279,315.69	\$1,891,319.57	

