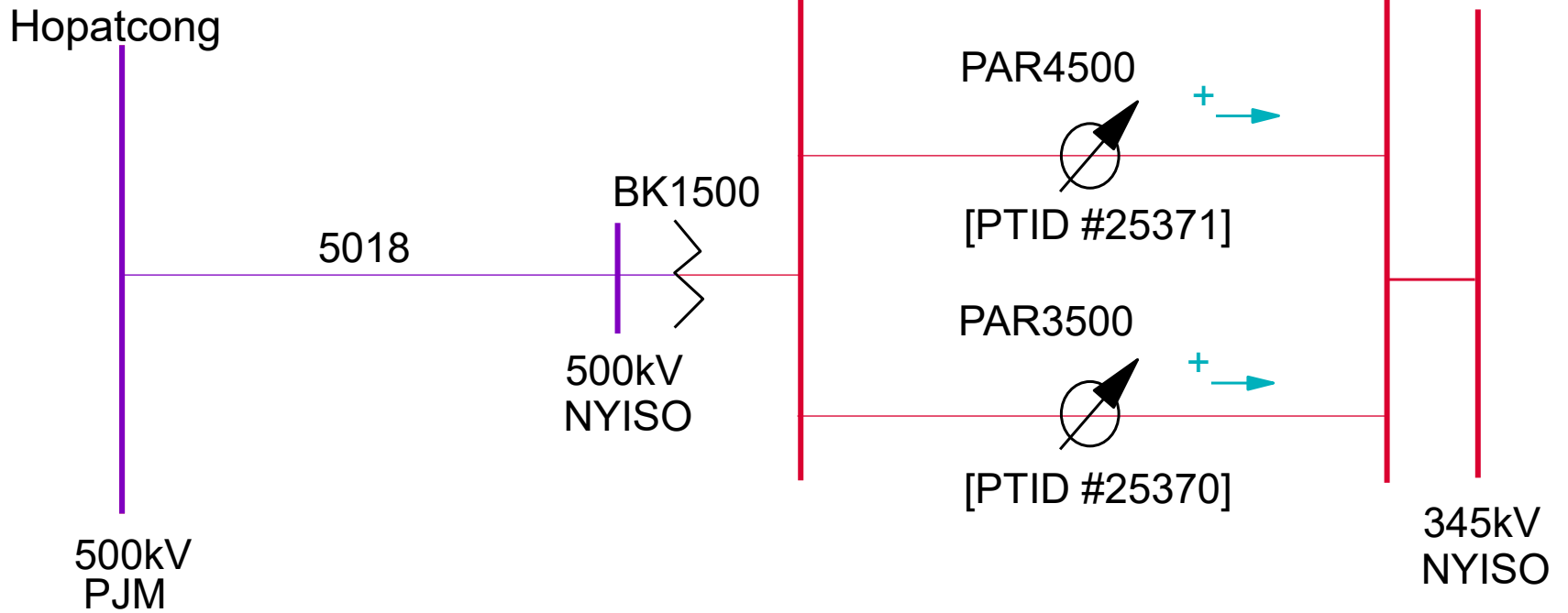


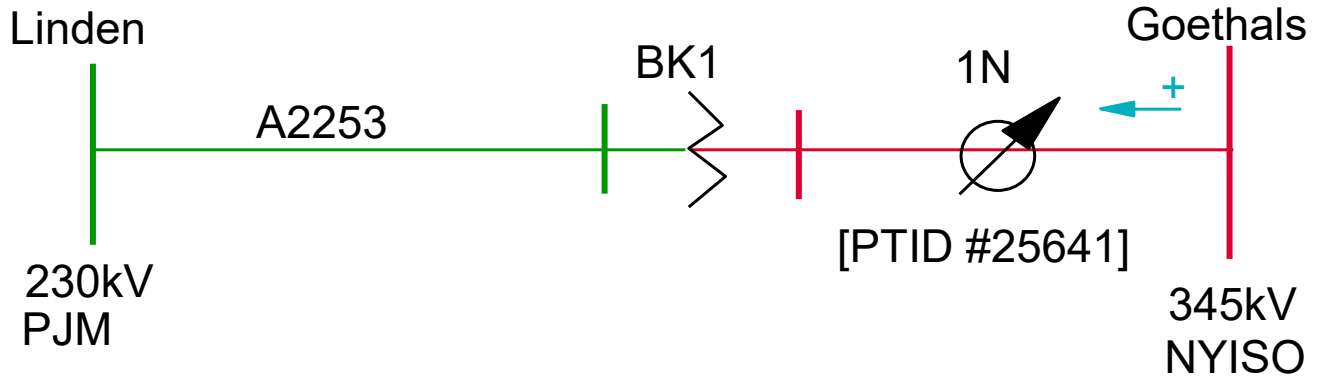
Par Flow Direction Diagrams

25370 & 25371 RAMAPO

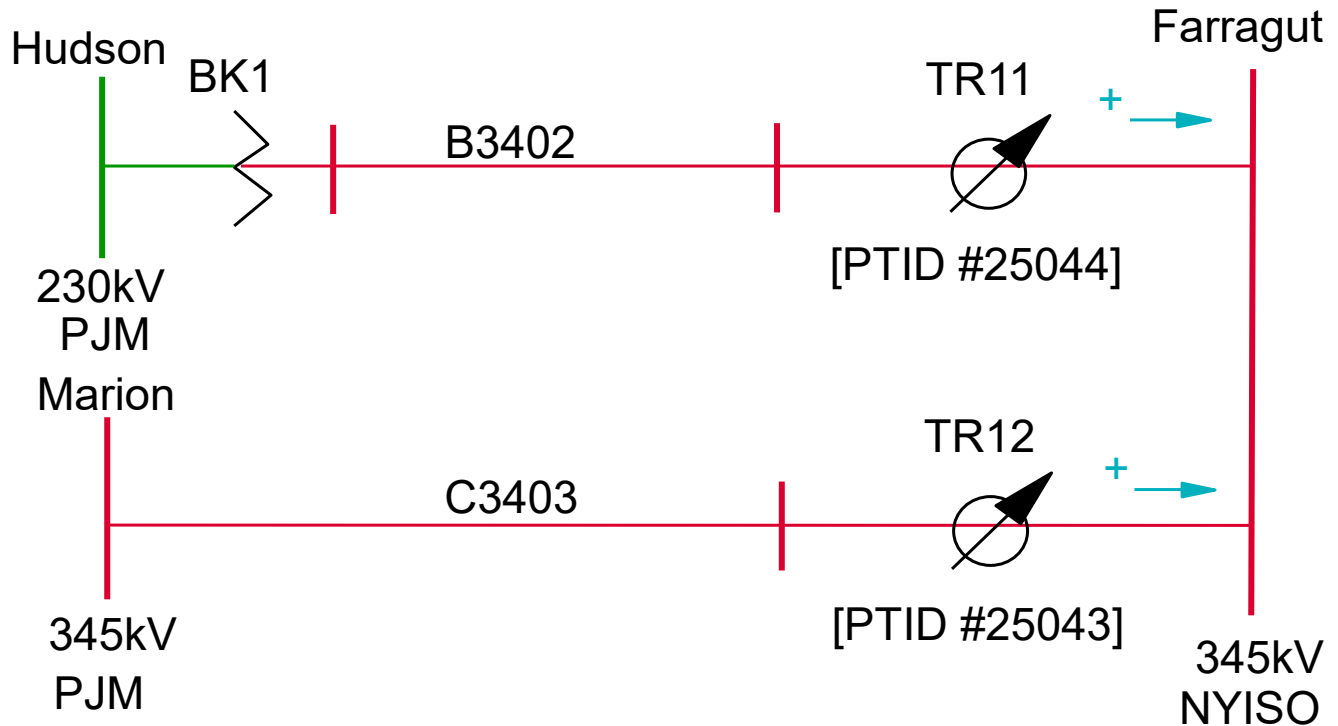


25641 GOETHALS

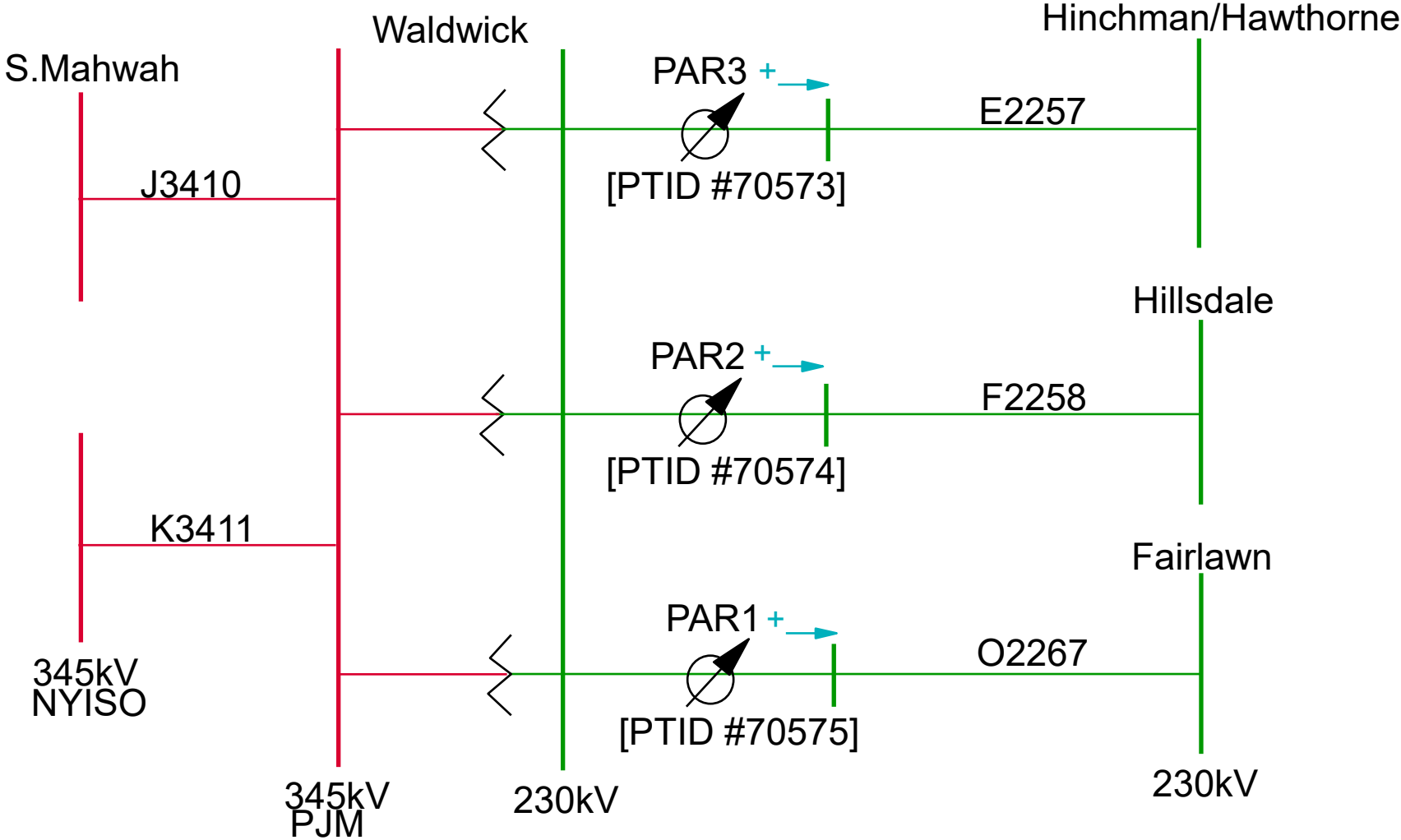
Interconnection Pars



25044 & 25043 FARRAGUT



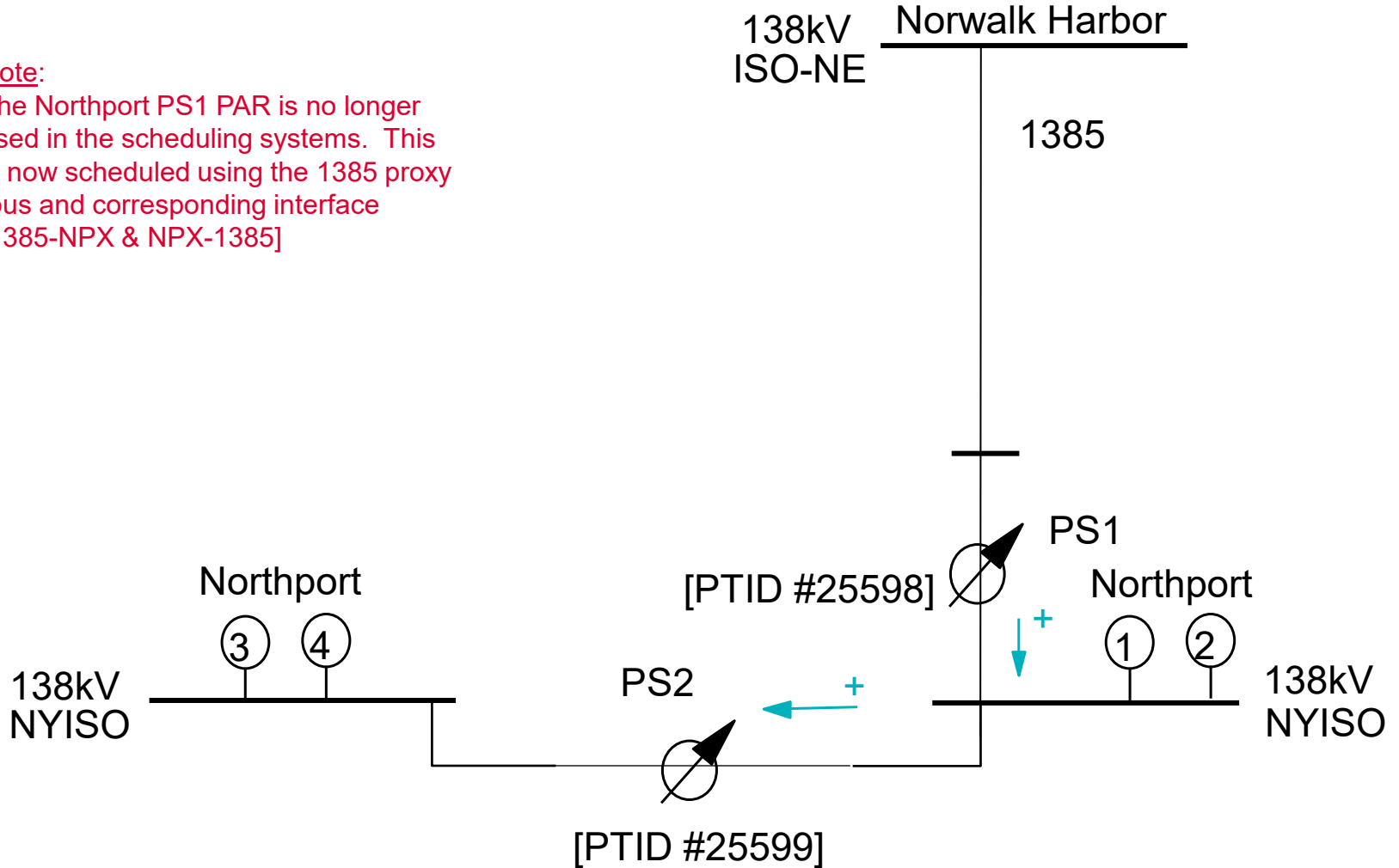
70573, 70574 & 70575 WALDWICK



25598 & 25599 NORTHPORT

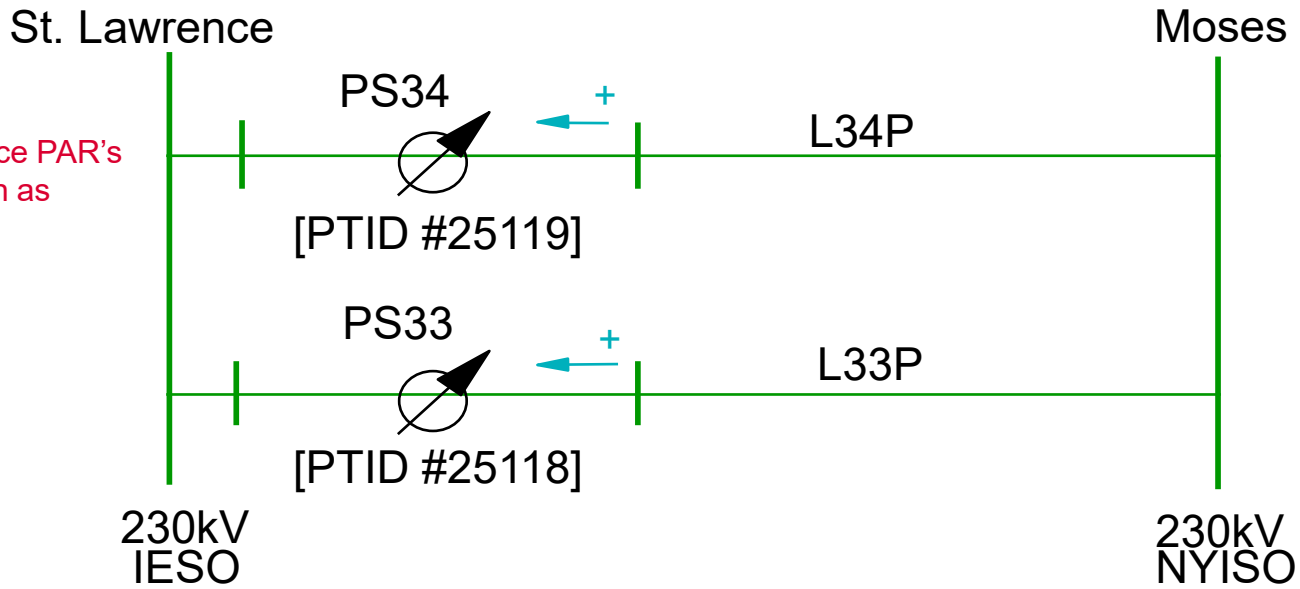
Note:

The Northport PS1 PAR is no longer used in the scheduling systems. This is now scheduled using the 1385 proxy bus and corresponding interface [1385-NPX & NPX-1385]

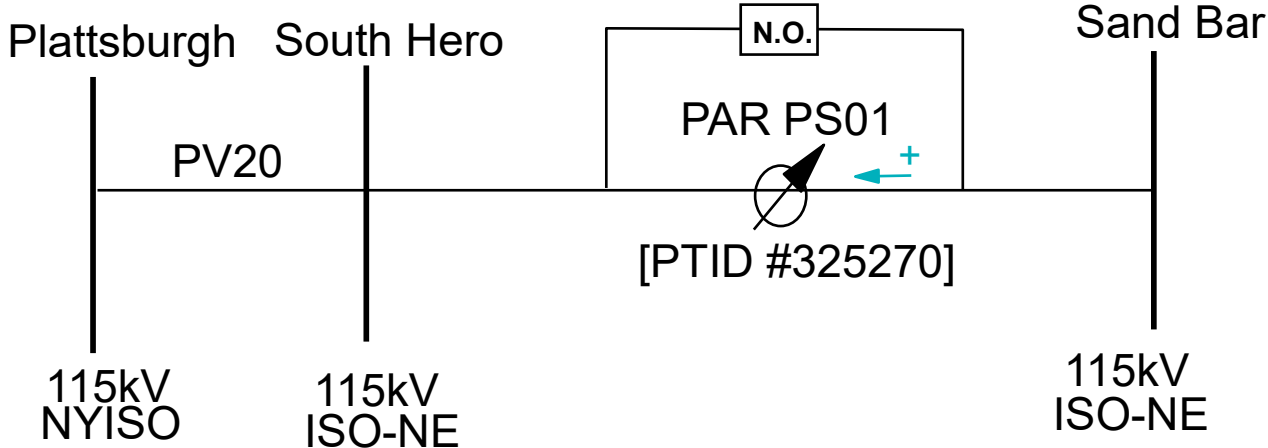


25118 & 25119 ST.LAWRENCE

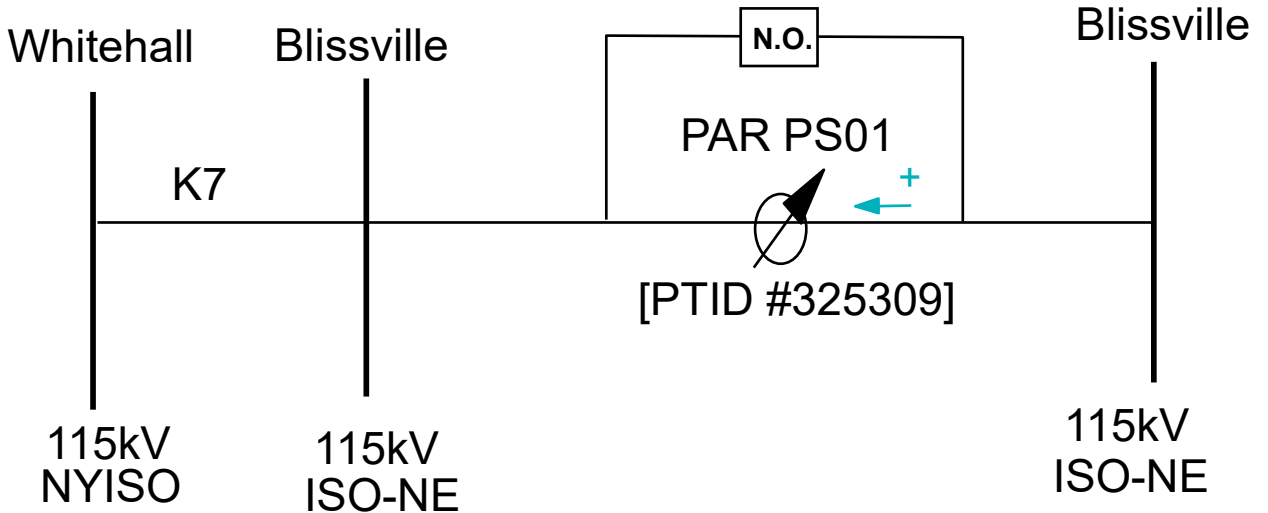
Note:
The St. Lawrence PAR's
sign convention as
of 12/10/2014



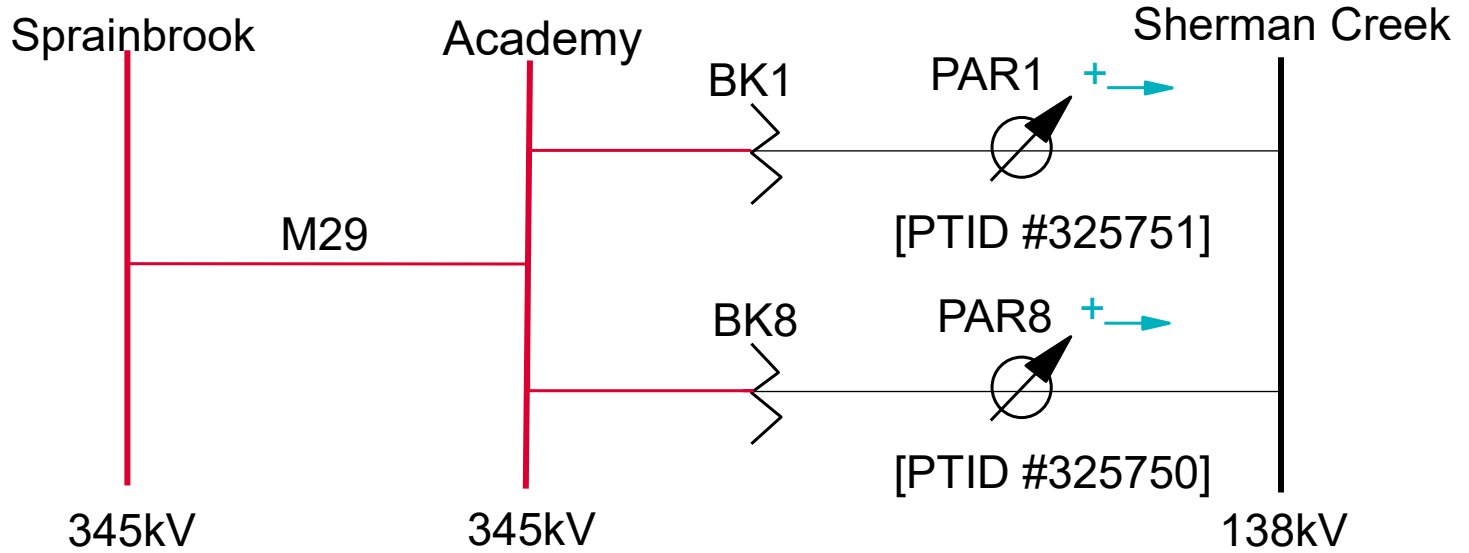
325270 SAND BAR



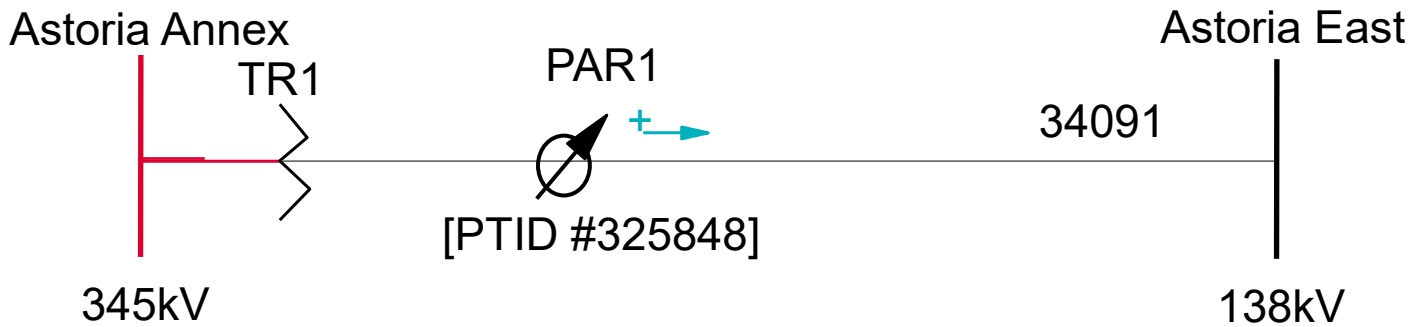
325309 BLISSVILLE



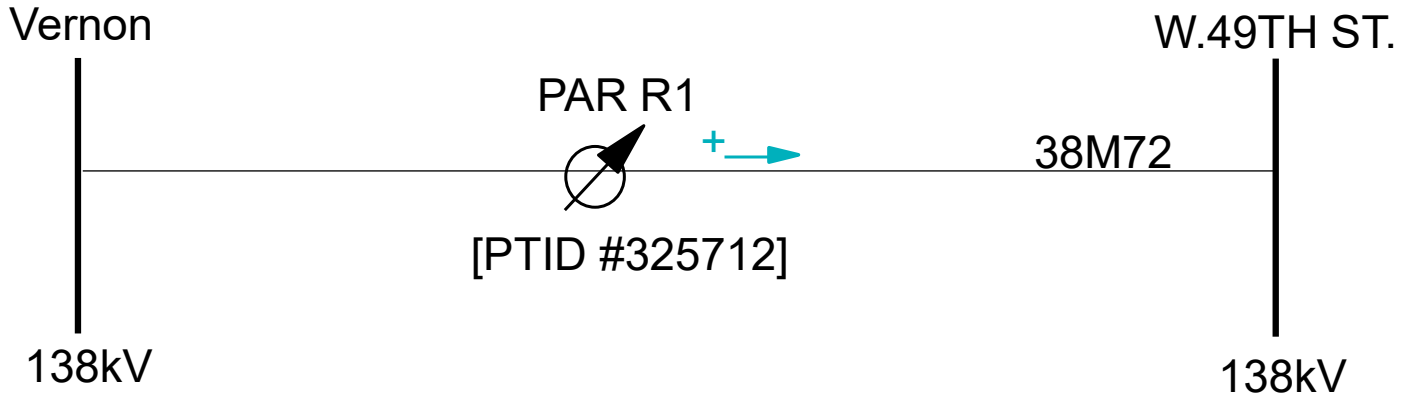
325750 & 325751 ACADEMY



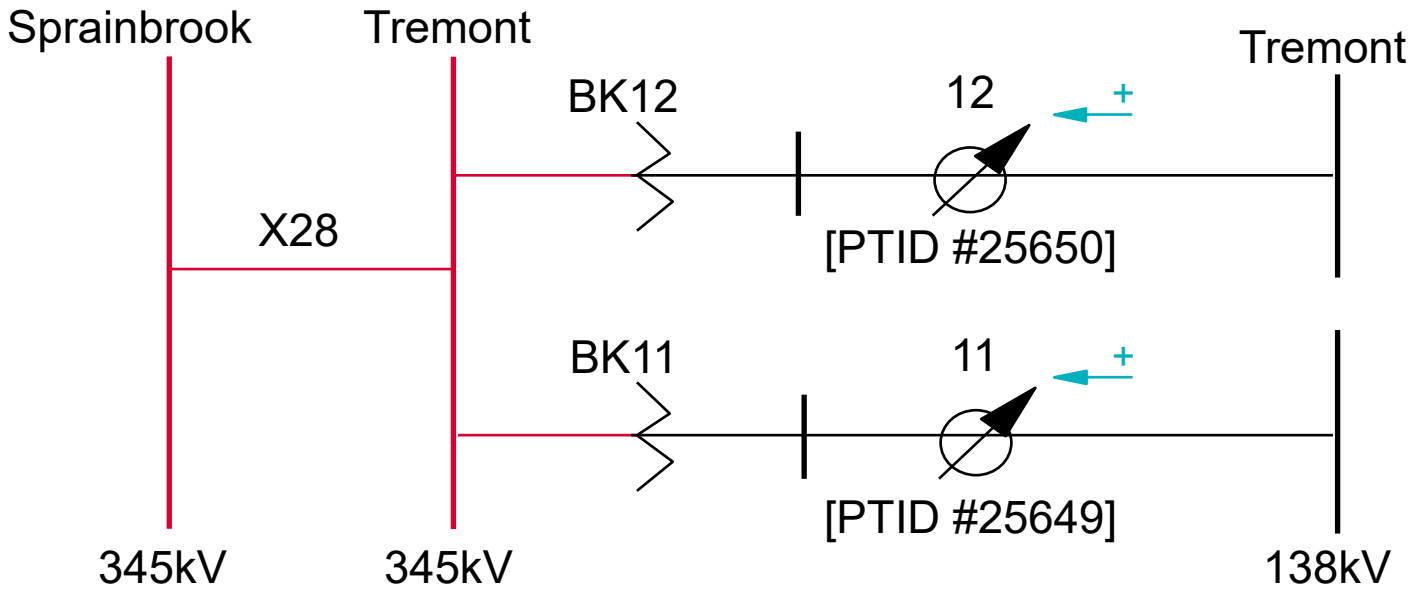
325848 ASTORIA ANNEX



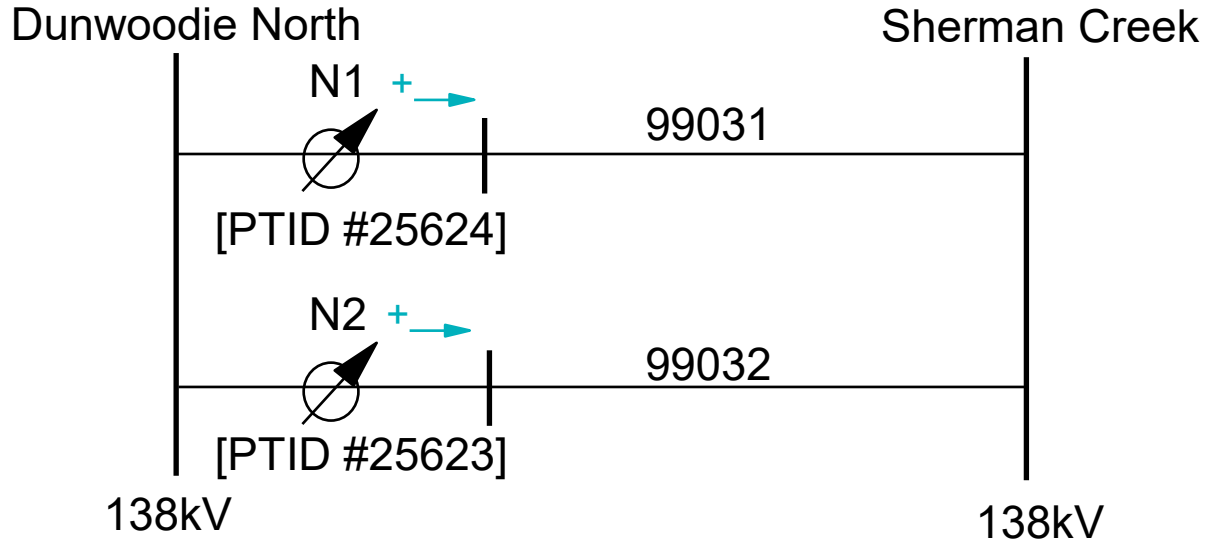
325712 VERNON



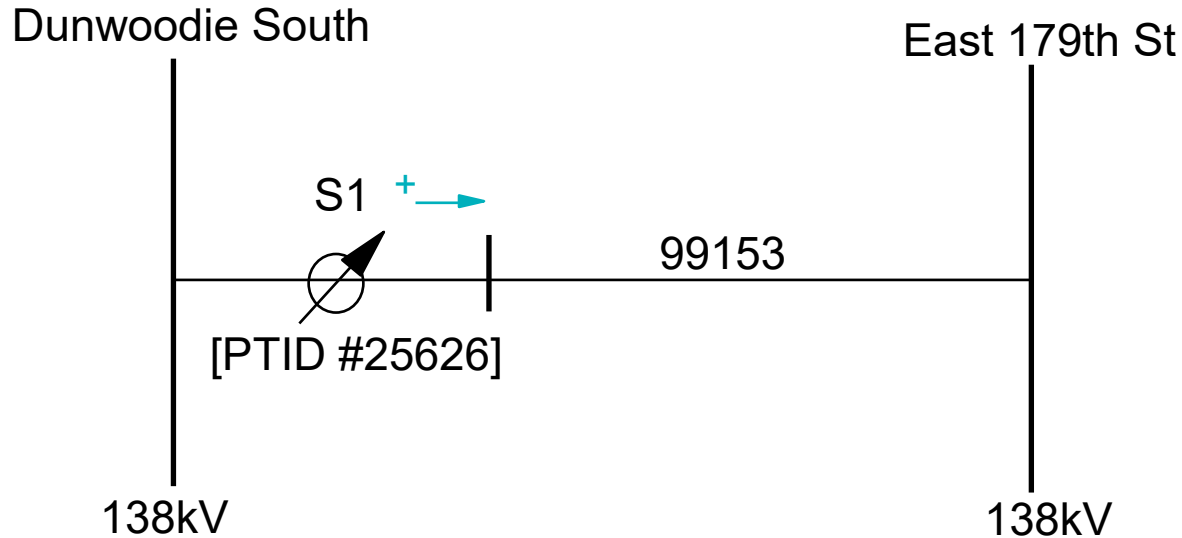
25649 & 25650 TREMONT



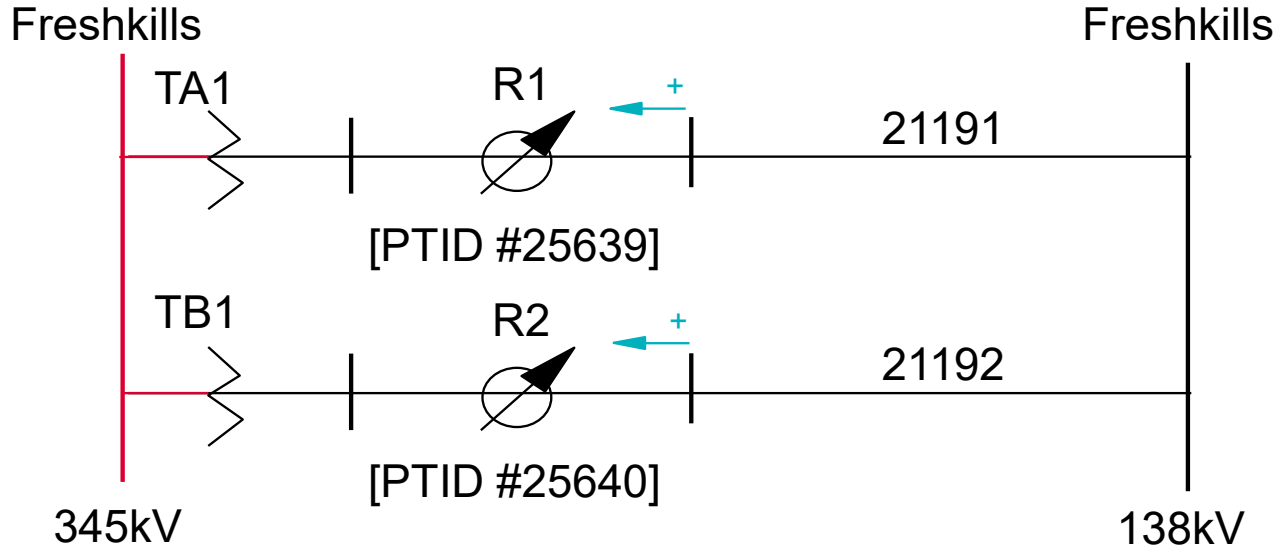
25623 & 25624 DUNWOODIE NORTH



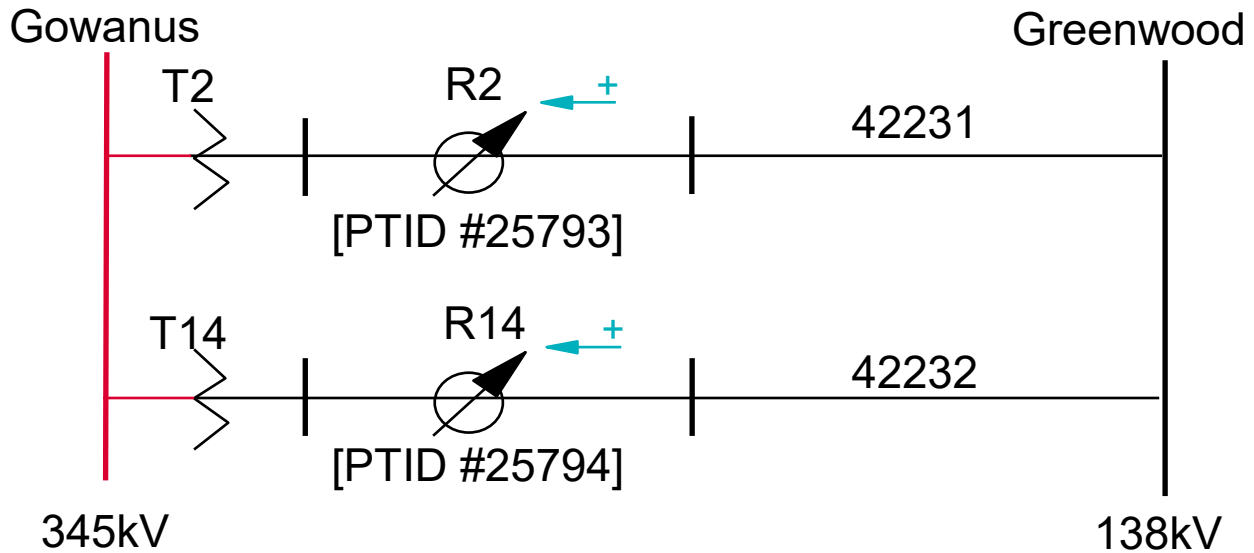
25626 DUNWOODIE SOUTH



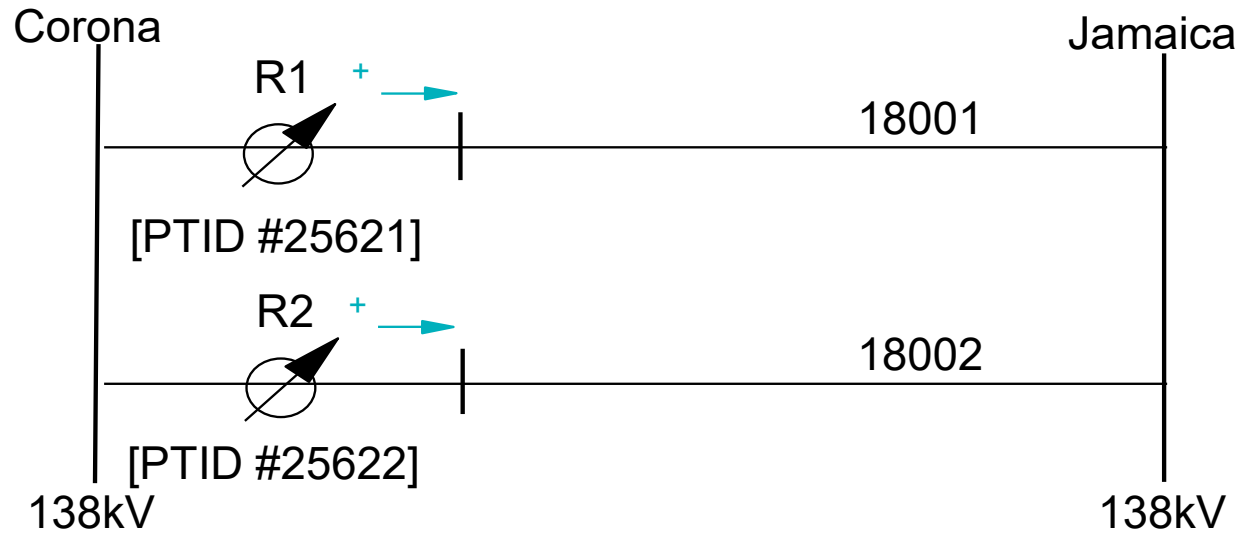
25639 & 25640 FRESHKILLS



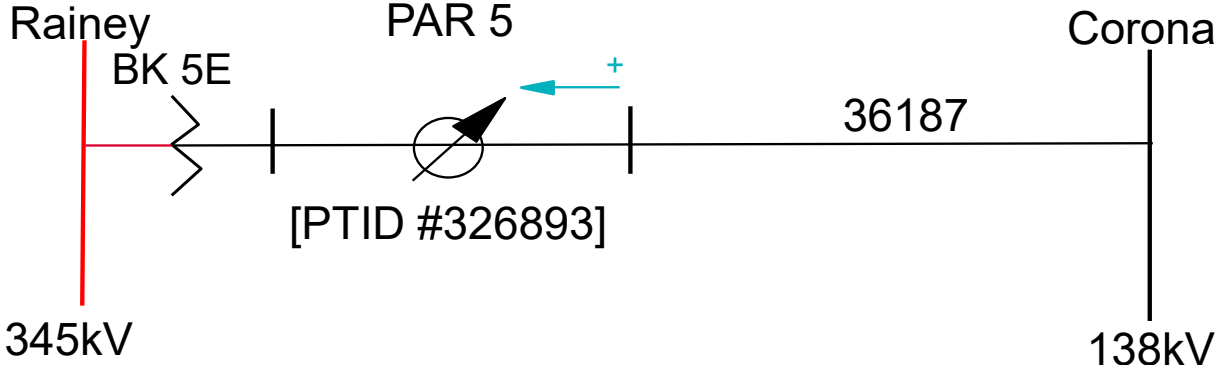
25793 & 25794 GOWANUS



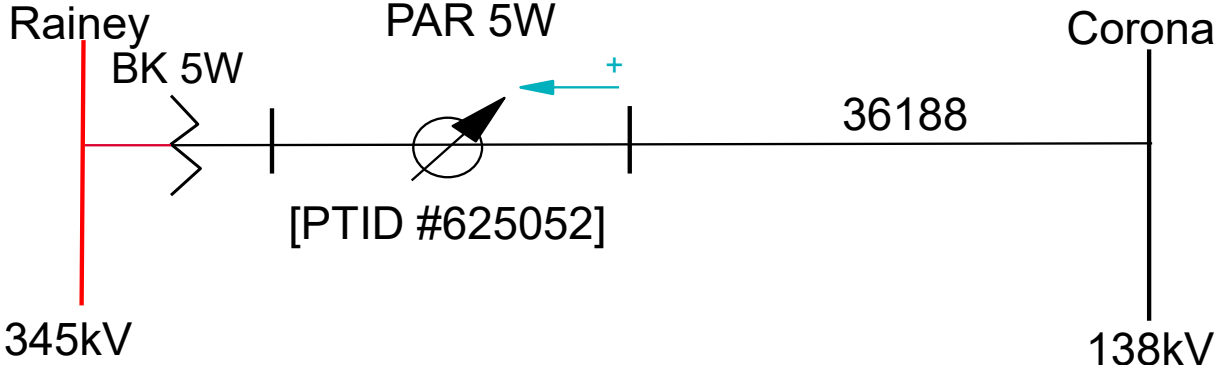
25622 & 25621 CORONA



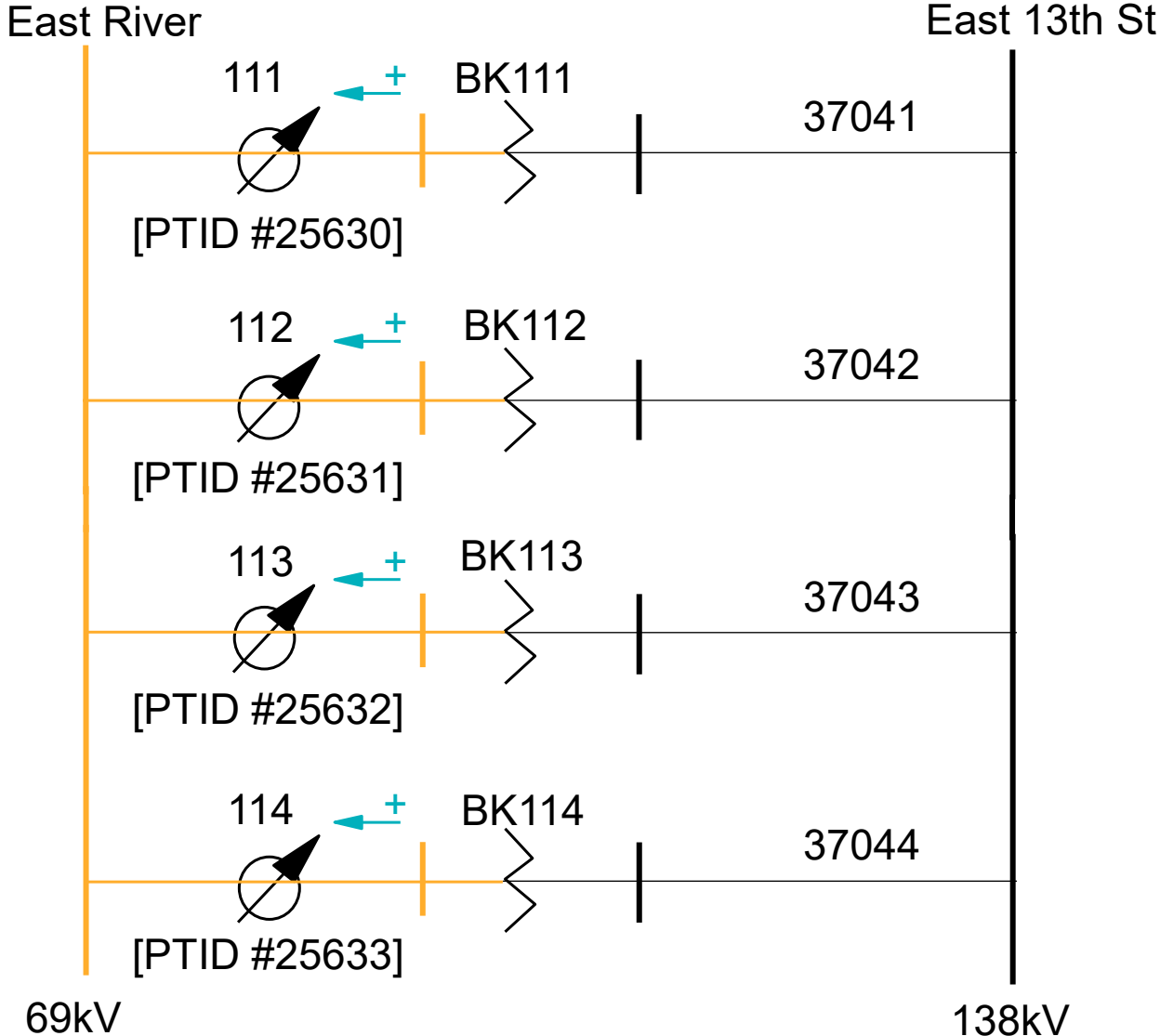
326893 RAINEY



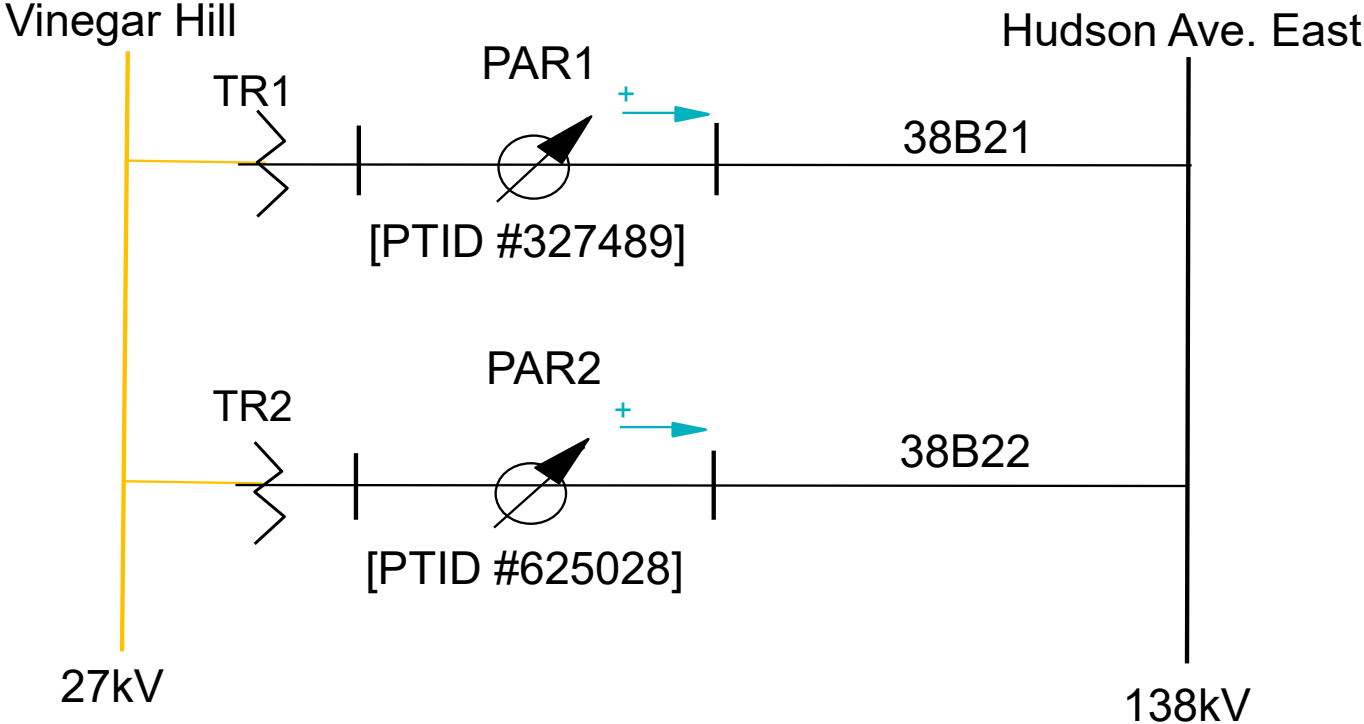
625052 RAINEY



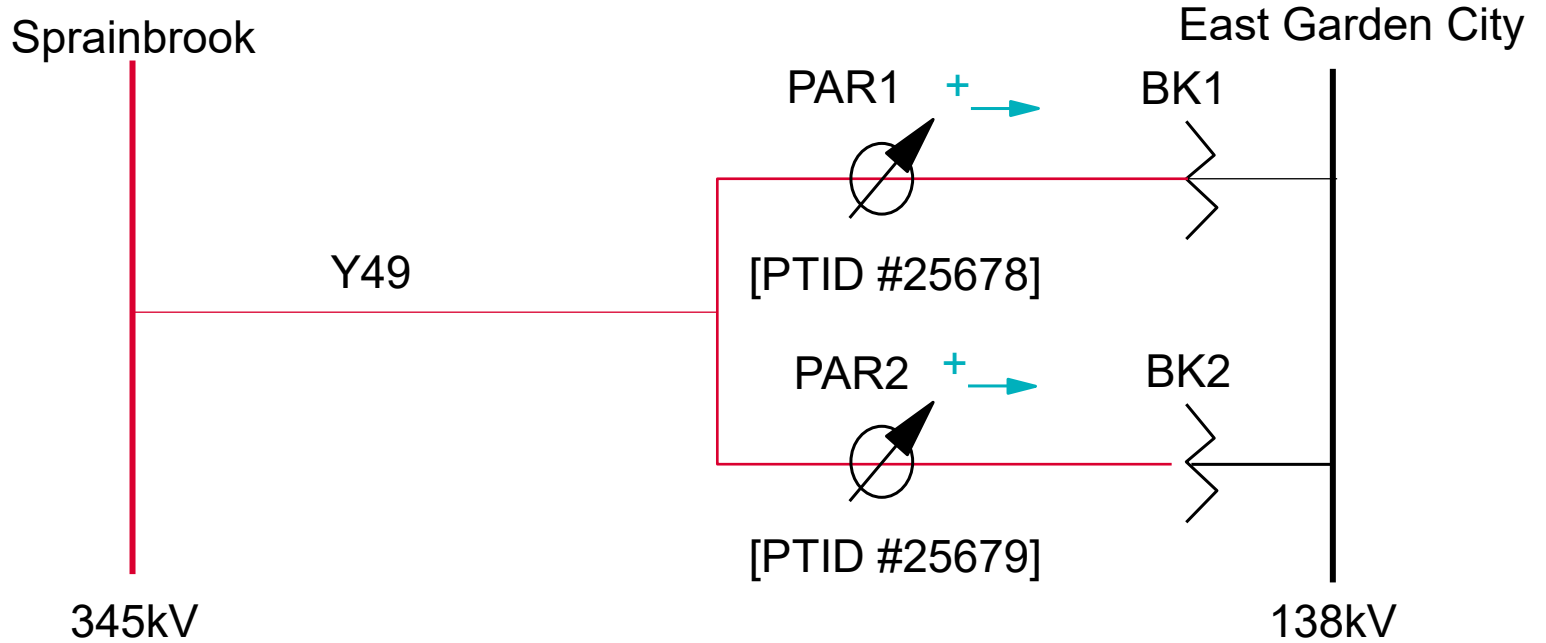
25630,25631,25632 & 25633 EAST RIVER



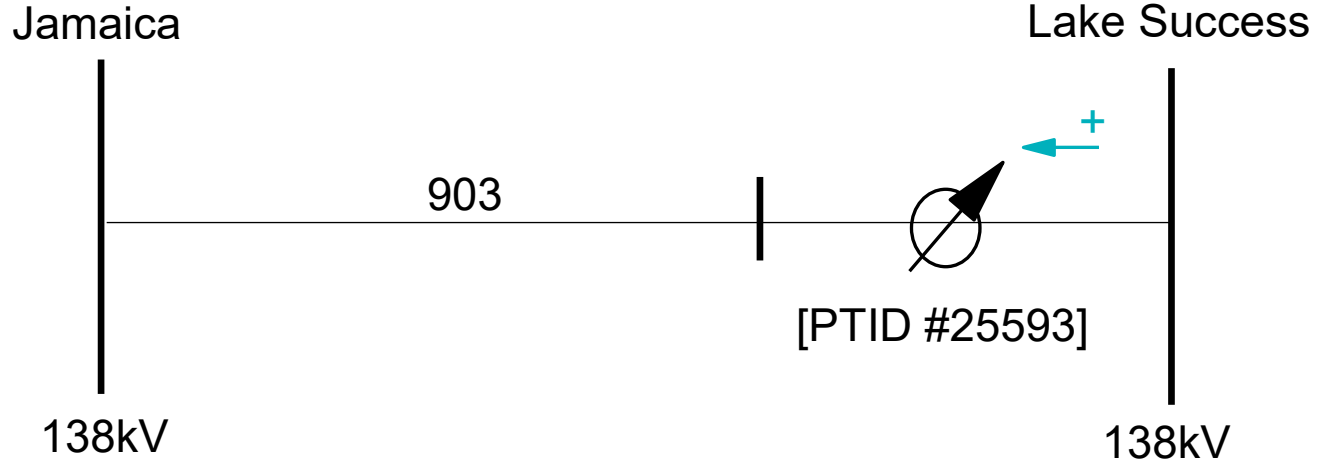
327489 & 625028 VINEGAR HILL



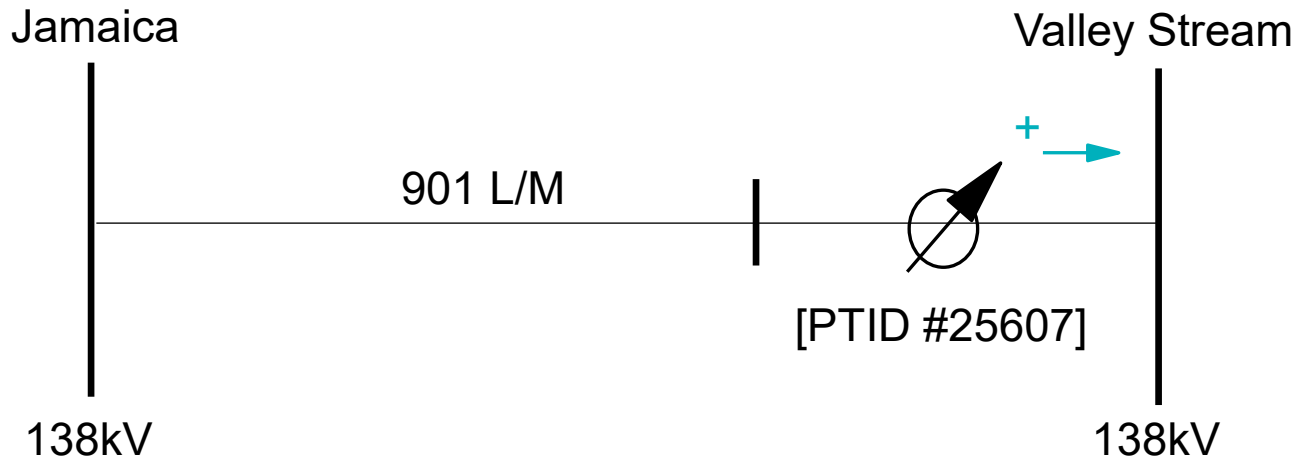
25678 & 25679 EAST GARDEN CITY



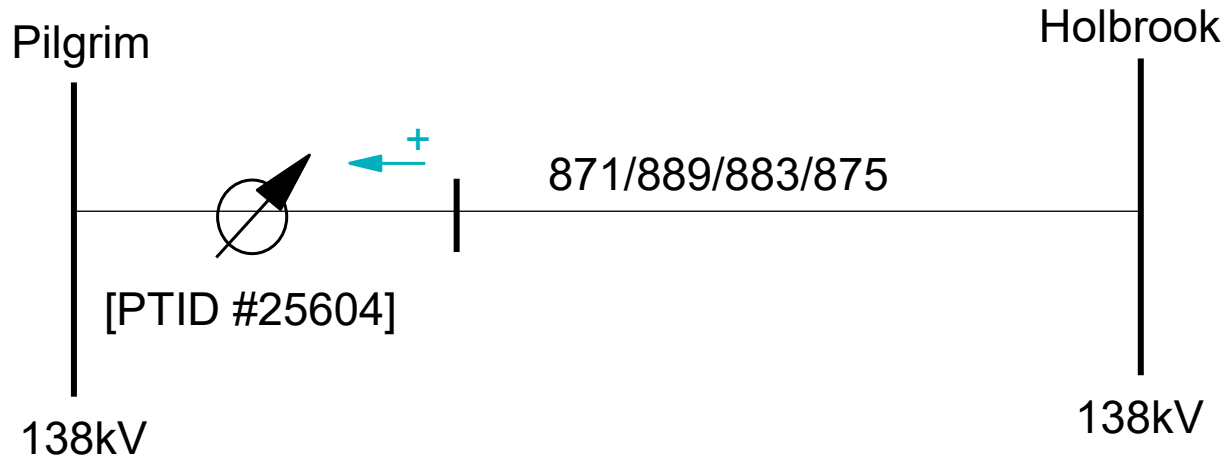
25593 LAKE SUCCESS



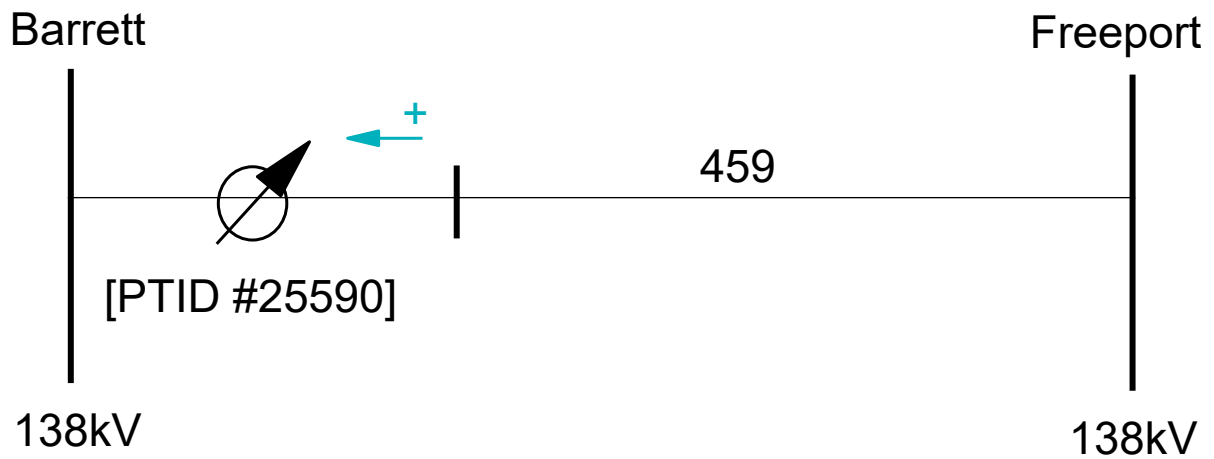
25607 VALLEY STREAM



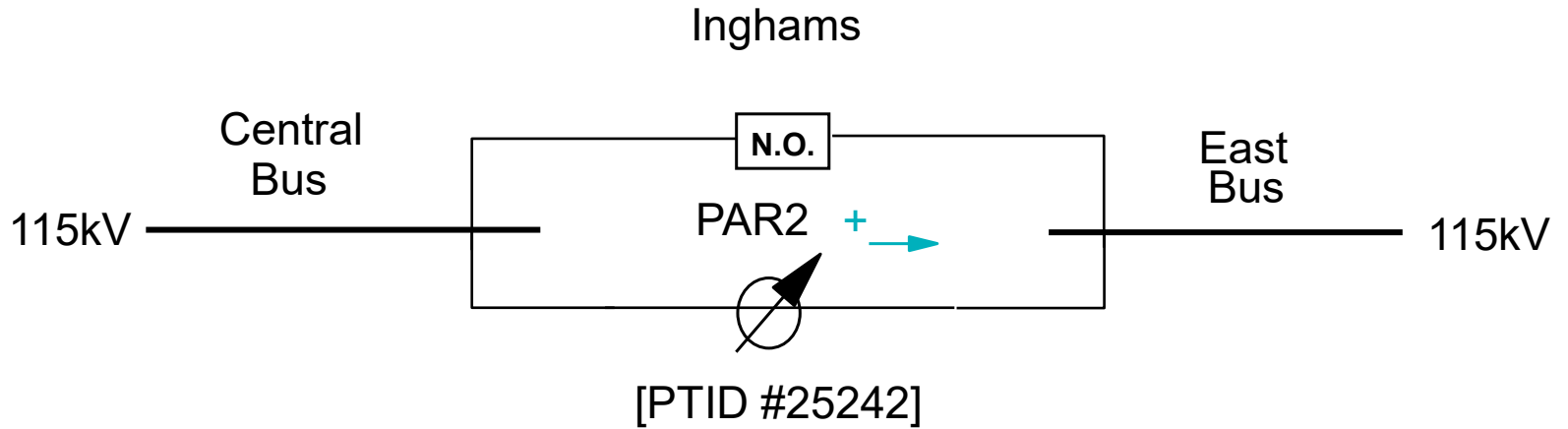
25604 PILGRIM



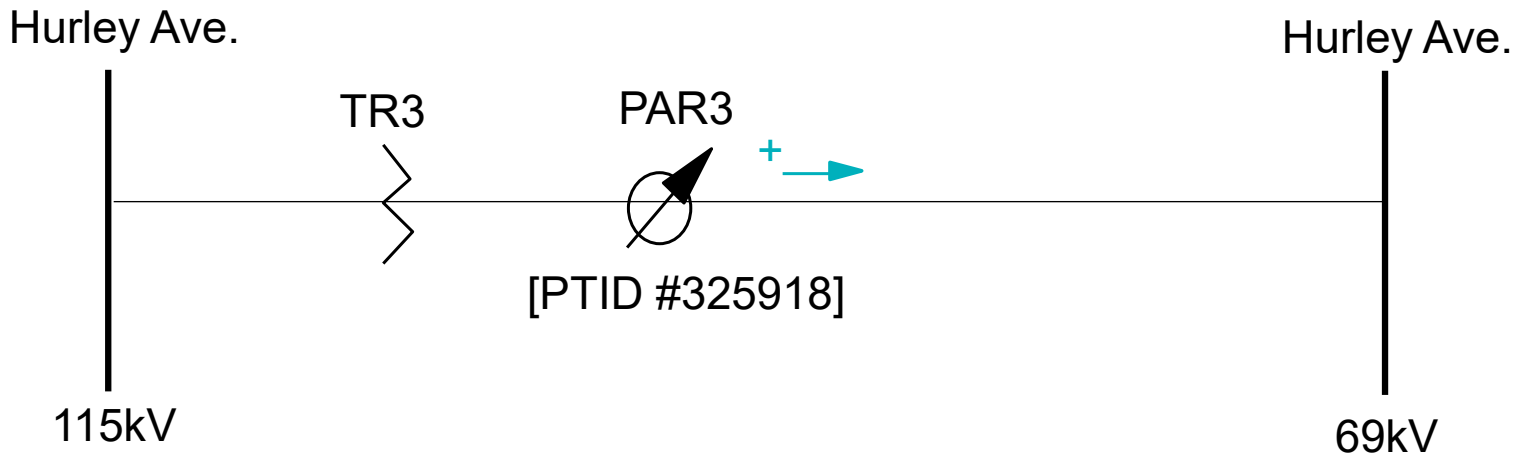
25590 BARRETT



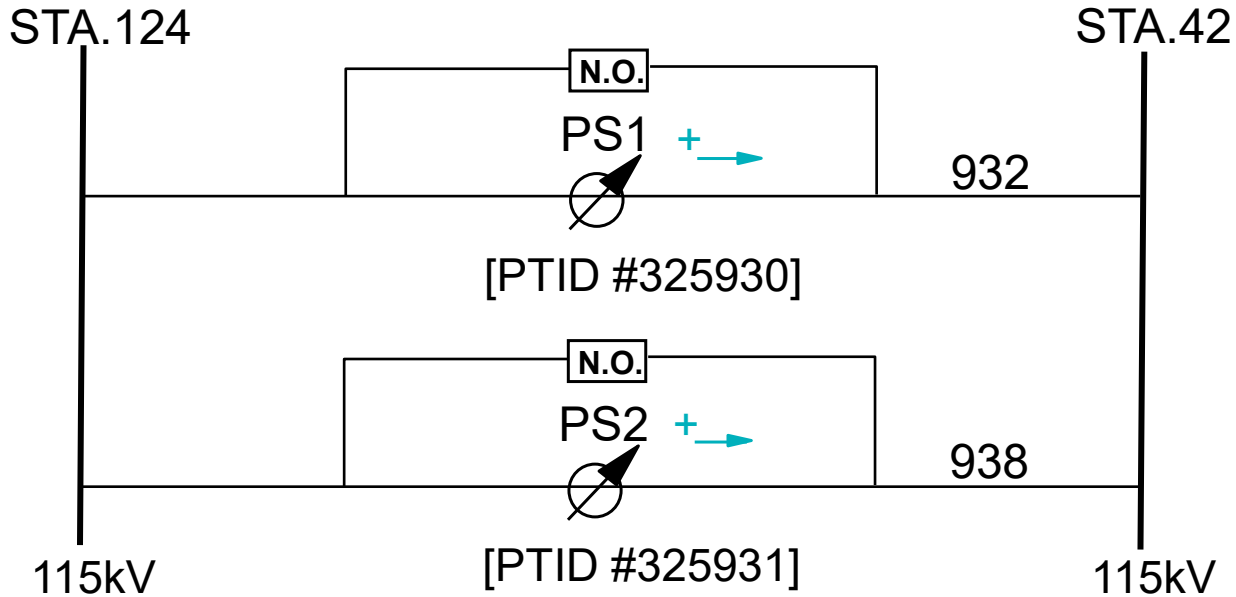
25242 INGHAMS



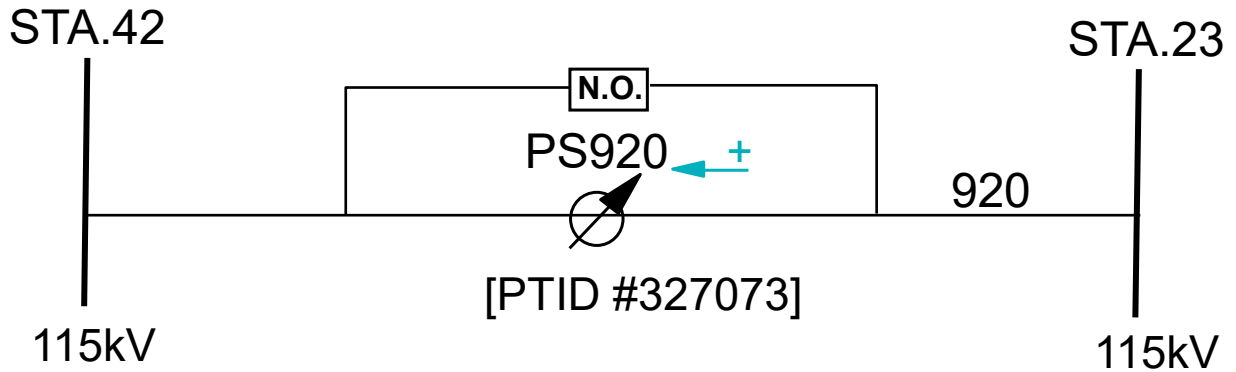
325918 HURLEY AVE



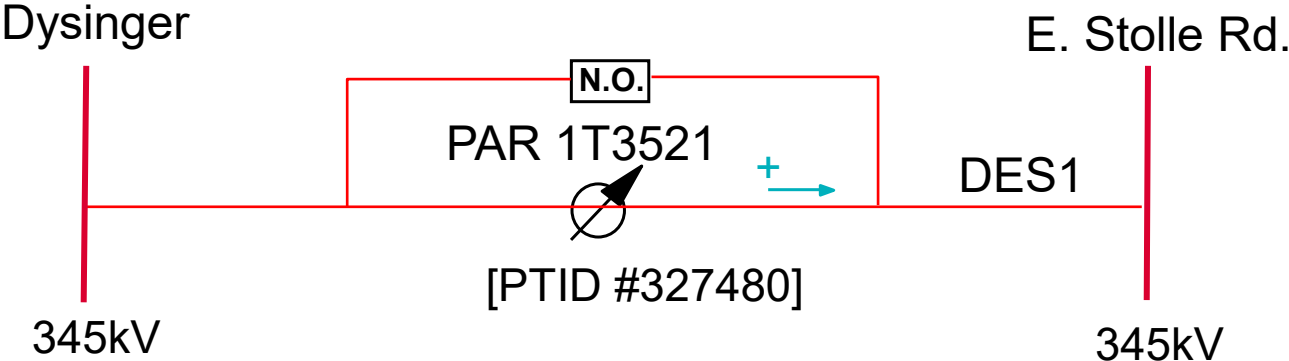
325930 & 325931 STA.124



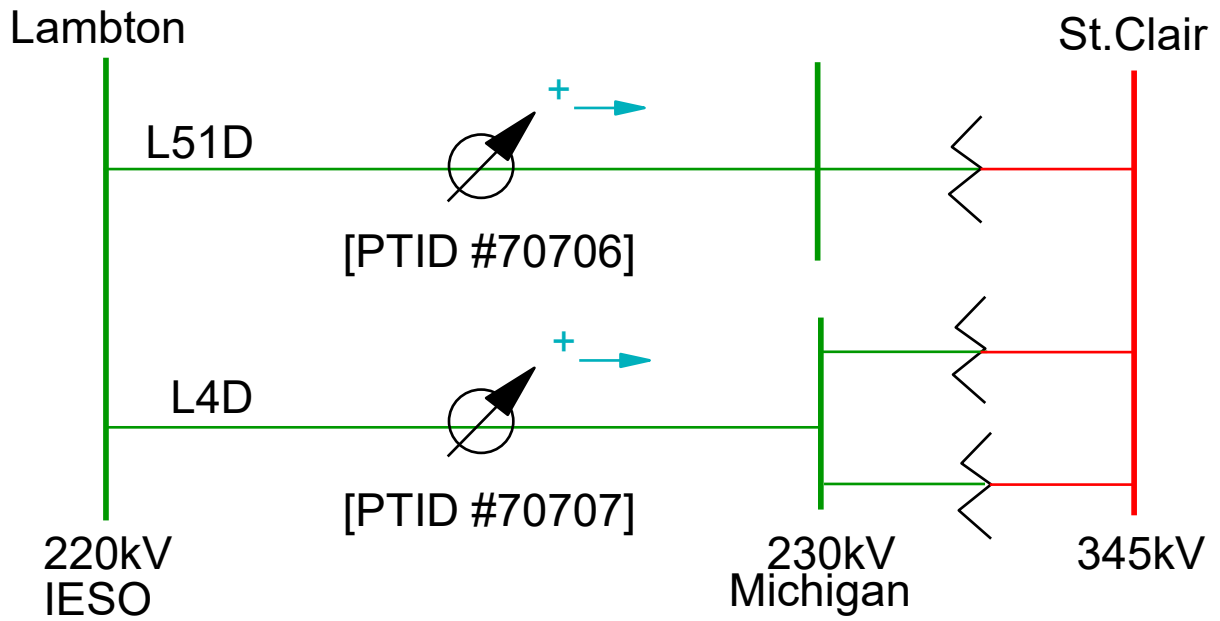
327073 STA.42



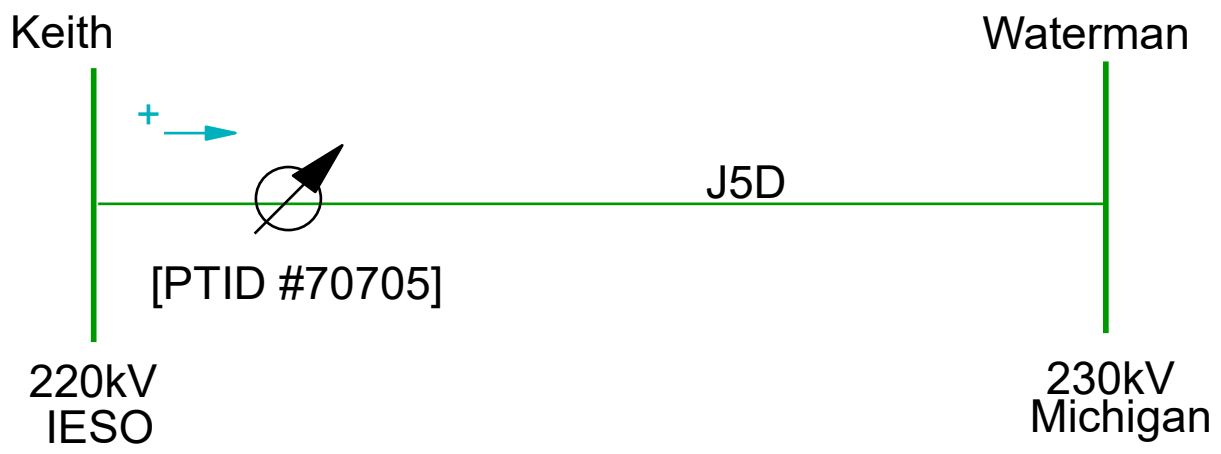
327480 DYSINGER



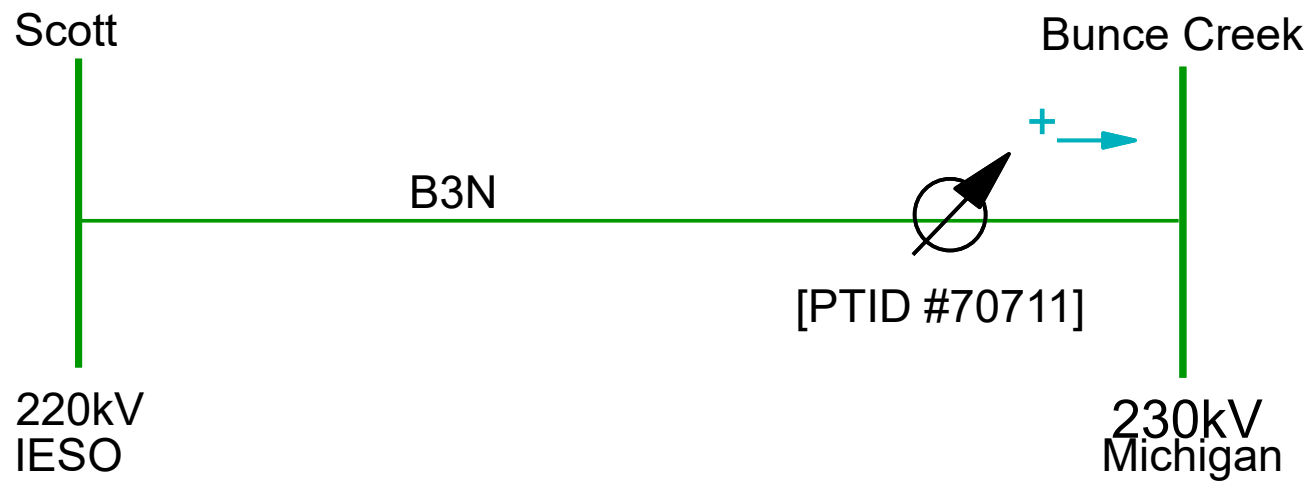
70706 & 70707 LAMBTON



70705 KEITH



70711 BUNCE CREEK



Key:



- Phase angle regulator (PAR)



- Positive flow in direction of arrow



- Transformer bank

N.O.

- Normally Open Circuit Breaker