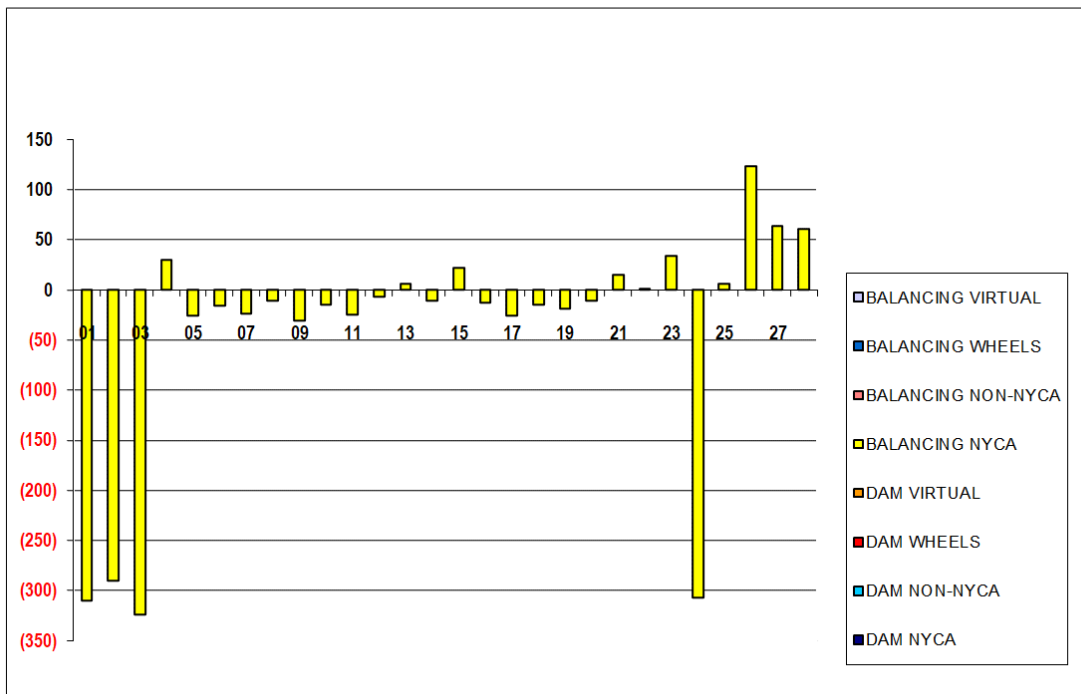


SETTLEMENTS REPORT
February 2021 Settlement Adjustment
July 8, 2021

Settlement Adjustment – Market Supply Delta Analysis

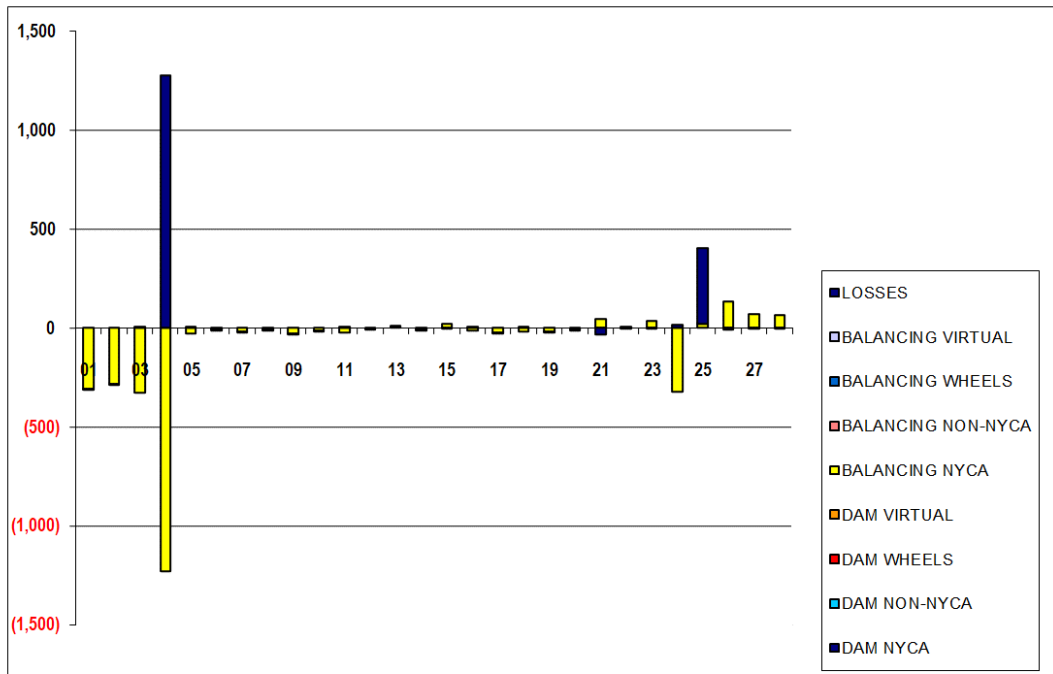
	MONDAY	TUESDAY	WEDNESDAY	THURSDAY	FRIDAY	SATURDAY	SUNDAY
	1	2	3	4	5	6	7
DAM NYCA	0	0	0	0	0	0	0
DAM NON-NYCA	0	0	0	0	0	0	0
DAM WHEELS	0	0	0	0	0	0	0
DAM VIRTUAL	0	0	0	0	0	0	0
BALANCING NYCA	(310)	(290)	(324)	30	(26)	(15)	(24)
BALANCING NON-NYCA	0	0	0	0	0	0	0
BALANCING WHEELS	0	0	0	0	0	0	0
BALANCING VIRTUAL	0	0	0	0	0	0	0
	8	9	10	11	12	13	14
DAM NYCA	0	0	0	0	0	0	0
DAM NON-NYCA	0	0	0	0	0	0	0
DAM WHEELS	0	0	0	0	0	0	0
DAM VIRTUAL	0	0	0	0	0	0	0
BALANCING NYCA	(10)	(31)	(14)	(24)	(7)	6	(11)
BALANCING NON-NYCA	0	0	0	0	0	0	0
BALANCING WHEELS	0	0	0	0	0	0	0
BALANCING VIRTUAL	0	0	0	0	0	0	0
	15	16	17	18	19	20	21
DAM NYCA	0	0	0	0	0	0	0
DAM NON-NYCA	0	0	0	0	0	0	0
DAM WHEELS	0	0	0	0	0	0	0
DAM VIRTUAL	0	0	0	0	0	0	0
BALANCING NYCA	22	(13)	(26)	(15)	(18)	(11)	15
BALANCING NON-NYCA	0	0	0	0	0	0	0
BALANCING WHEELS	0	0	0	0	0	0	0
BALANCING VIRTUAL	0	0	0	0	0	0	0
	22	23	24	25	26	27	28
DAM NYCA	0	0	0	0	0	0	0
DAM NON-NYCA	0	0	0	0	0	0	0
DAM WHEELS	0	0	0	0	0	0	0
DAM VIRTUAL	0	0	0	0	0	0	0
BALANCING NYCA	0	34	(307)	6	123	64	61
BALANCING NON-NYCA	0	0	0	0	0	0	0
BALANCING WHEELS	0	0	0	0	0	0	0
BALANCING VIRTUAL	0	0	0	0	0	0	0



SETTLEMENTS REPORT
February 2021 Settlement Adjustment
July 8, 2021

Settlement Adjustment – Market Withdrawals Delta Analysis

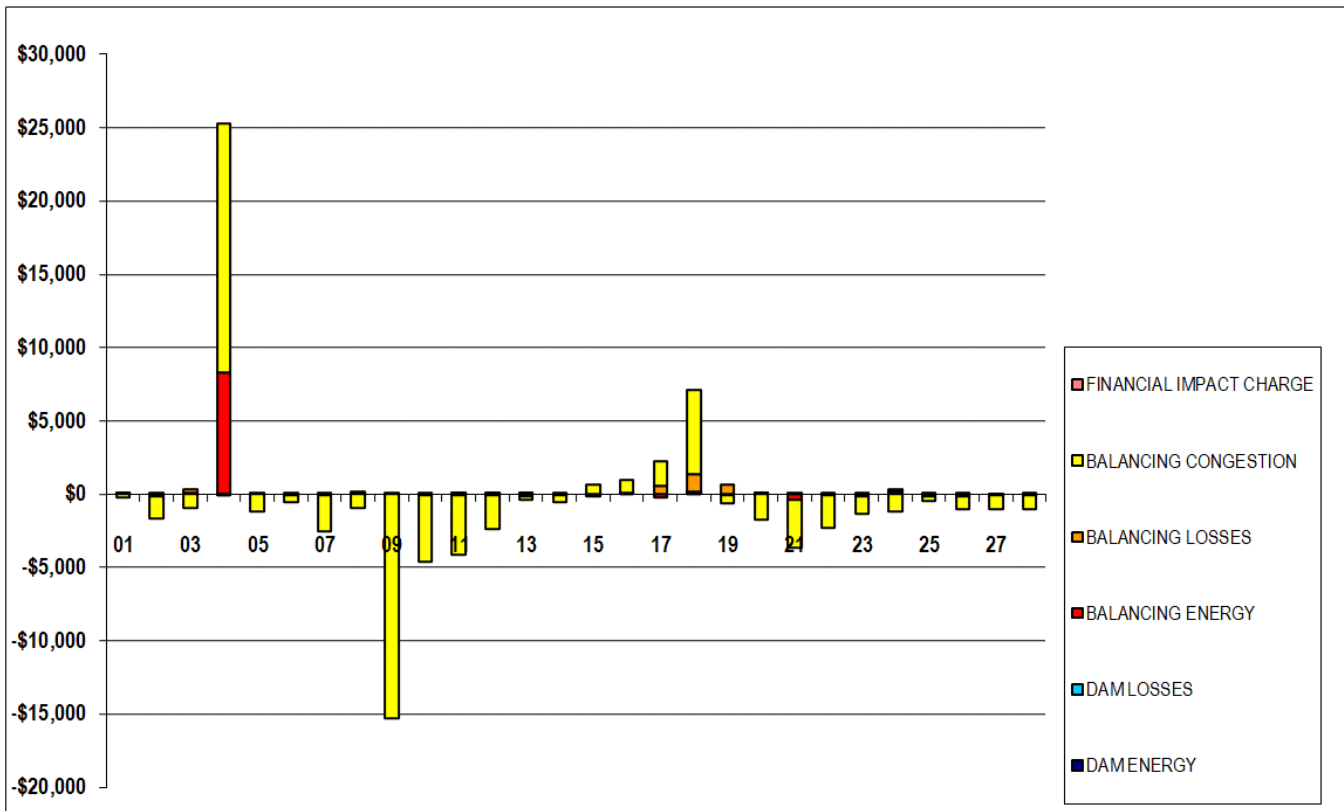
	MONDAY	TUESDAY	WEDNESDAY	THURSDAY	FRIDAY	SATURDAY	SUNDAY
	1	2	3	4	5	6	7
DAM NYCA	0	0	0	0	0	0	0
DAM NON-NYCA	0	0	0	0	0	0	0
DAM WHEELS	0	0	0	0	0	0	0
DAM VIRTUAL	0	0	0	0	0	0	0
BALANCING NYCA	(308)	(281)	(327)	(1,232)	(29)	(11)	(20)
BALANCING NON-NYCA	0	0	0	0	0	0	0
BALANCING WHEELS	0	0	0	0	0	0	0
BALANCING VIRTUAL	0	0	0	0	0	0	0
UFE/LOSSES	(2)	(9)	3	1,278	3	(4)	(4)
8	9	10	11	12	13	14	
DAM NYCA	0	0	0	0	0	0	0
DAM NON-NYCA	0	0	0	0	0	0	0
DAM WHEELS	0	0	0	0	0	0	0
DAM VIRTUAL	0	0	0	0	0	0	0
BALANCING NYCA	(9)	(29)	(13)	(25)	(4)	6	(9)
BALANCING NON-NYCA	0	0	0	0	0	0	0
BALANCING WHEELS	0	0	0	0	0	0	0
BALANCING VIRTUAL	0	0	0	0	0	0	0
UFE/LOSSES	(1)	(2)	(2)	0	(4)	1	(1)
15	16	17	18	19	20	21	
DAM NYCA	0	0	0	0	0	0	0
DAM NON-NYCA	0	0	0	0	0	0	0
DAM WHEELS	0	0	0	0	0	0	0
DAM VIRTUAL	0	0	0	0	0	0	0
BALANCING NYCA	23	(13)	(23)	(18)	(17)	(10)	47
BALANCING NON-NYCA	0	0	0	0	0	0	0
BALANCING WHEELS	0	0	0	0	0	0	0
BALANCING VIRTUAL	0	0	0	0	0	0	0
UFE/LOSSES	(1)	0	(3)	3	(2)	(0)	(31)
22	23	24	25	26	27	28	
DAM NYCA	0	0	0	0	0	0	0
DAM NON-NYCA	0	0	0	0	0	0	0
DAM WHEELS	0	0	0	0	0	0	0
DAM VIRTUAL	0	0	0	0	0	0	0
BALANCING NYCA	2	38	(323)	19	131	69	64
BALANCING NON-NYCA	0	0	0	0	0	0	0
BALANCING WHEELS	0	0	0	0	0	0	0
BALANCING VIRTUAL	0	0	0	0	0	0	0
UFE/LOSSES	(2)	(3)	17	384	(8)	(5)	(3)



SETTLEMENTS REPORT
February 2021 Settlement Adjustment
July 8, 2021

Settlement Adjustment – Market Residuals Delta Analysis

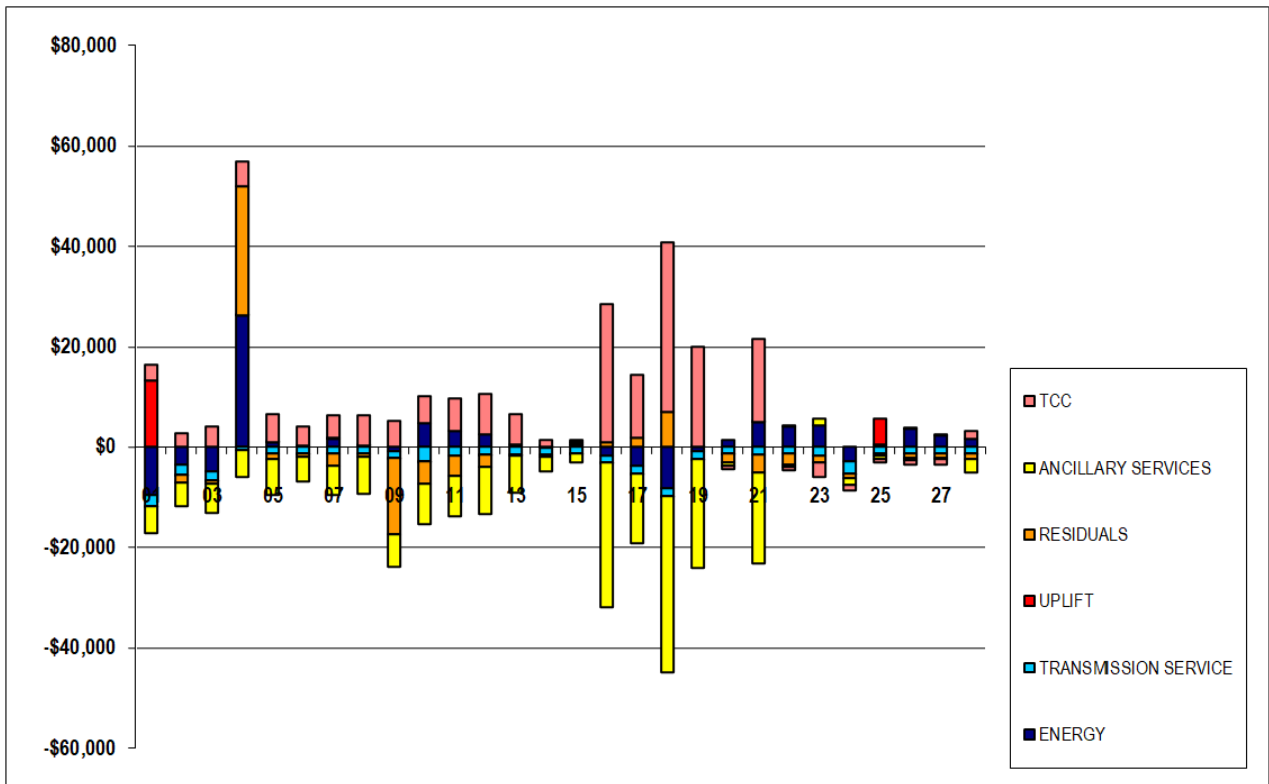
	MONDAY	TUESDAY	WEDNESDAY	THURSDAY	FRIDAY	SATURDAY	SUNDAY
	1	2	3	4	5	6	7
DAM ENERGY	\$0.01	\$0.00	\$0.01	(\$0.01)	(\$0.01)	\$0.00	\$0.00
DAM LOSSES	\$0.00	\$0.00	\$0.01	\$0.00	\$0.00	\$0.01	\$0.01
BALANCING ENERGY	\$5.21	(\$175.31)	\$74.79	\$8,340.69	\$17.09	(\$32.94)	(\$6.65)
BALANCING LOSSES	\$78.42	\$126.54	\$247.17	(\$89.02)	(\$12.06)	(\$41.49)	(\$31.45)
BALANCING CONGESTION	(\$181.87)	(\$1,463.30)	(\$940.67)	\$16,946.43	(\$1,189.08)	(\$474.92)	(\$2,454.34)
FINANCIAL IMPACT CHARGE	\$0.00	\$0.00	\$0.00	\$0.00	\$0.00	\$0.00	\$0.00
	8	9	10	11	12	13	14
DAM ENERGY	\$0.00	(\$0.01)	\$0.00	\$0.01	\$0.01	\$0.00	(\$0.01)
DAM LOSSES	\$0.01	(\$0.01)	\$0.00	(\$0.01)	\$0.00	\$0.01	\$0.00
BALANCING ENERGY	\$54.56	\$3.35	(\$72.05)	\$6.40	(\$56.43)	\$49.13	(\$61.36)
BALANCING LOSSES	\$111.60	(\$12.18)	\$119.16	(\$56.82)	\$40.74	(\$128.14)	(\$6.84)
BALANCING CONGESTION	(\$933.63)	(\$15,299.92)	(\$4,558.83)	(\$4,045.85)	(\$2,345.05)	(\$214.46)	(\$460.86)
FINANCIAL IMPACT CHARGE	\$0.00	\$0.00	\$0.00	\$0.00	\$0.00	\$0.00	\$0.11
	15	16	17	18	19	20	21
DAM ENERGY	\$0.00	\$0.00	(\$0.01)	\$0.01	\$0.00	(\$0.01)	\$0.00
DAM LOSSES	\$0.01	\$0.00	\$0.00	\$0.00	\$0.00	\$0.01	\$0.00
BALANCING ENERGY	(\$64.93)	\$27.56	(\$228.92)	\$217.78	(\$65.87)	\$6.40	(\$412.22)
BALANCING LOSSES	(\$7.57)	\$81.95	\$595.49	\$1,126.69	\$645.85	\$85.18	\$40.14
BALANCING CONGESTION	\$654.91	\$829.33	\$1,631.47	\$5,802.54	(\$566.86)	(\$1,738.79)	(\$3,212.30)
FINANCIAL IMPACT CHARGE	\$0.00	\$0.00	\$0.00	\$0.00	\$0.00	\$0.00	\$0.00
	22	23	24	25	26	27	28
DAM ENERGY	\$0.00	(\$0.01)	\$0.00	\$0.00	(\$0.01)	\$0.00	\$0.00
DAM LOSSES	(\$0.01)	(\$0.01)	\$0.00	\$0.00	\$0.01	(\$0.01)	\$0.01
BALANCING ENERGY	(\$84.17)	(\$125.91)	\$202.58	(\$142.15)	(\$154.11)	(\$55.99)	(\$21.84)
BALANCING LOSSES	\$35.53	\$0.90	\$160.34	\$28.31	(\$14.75)	(\$22.91)	(\$7.22)
BALANCING CONGESTION	(\$2,205.17)	(\$1,207.63)	(\$1,202.39)	(\$296.73)	(\$816.22)	(\$924.74)	(\$996.72)
FINANCIAL IMPACT CHARGE	\$0.00	\$0.00	\$0.00	\$0.00	\$0.00	\$0.00	\$0.00



SETTLEMENTS REPORT
February 2021 Settlement Adjustment
July 8, 2021

Settlement Adjustment – Market Costs Delta Analysis

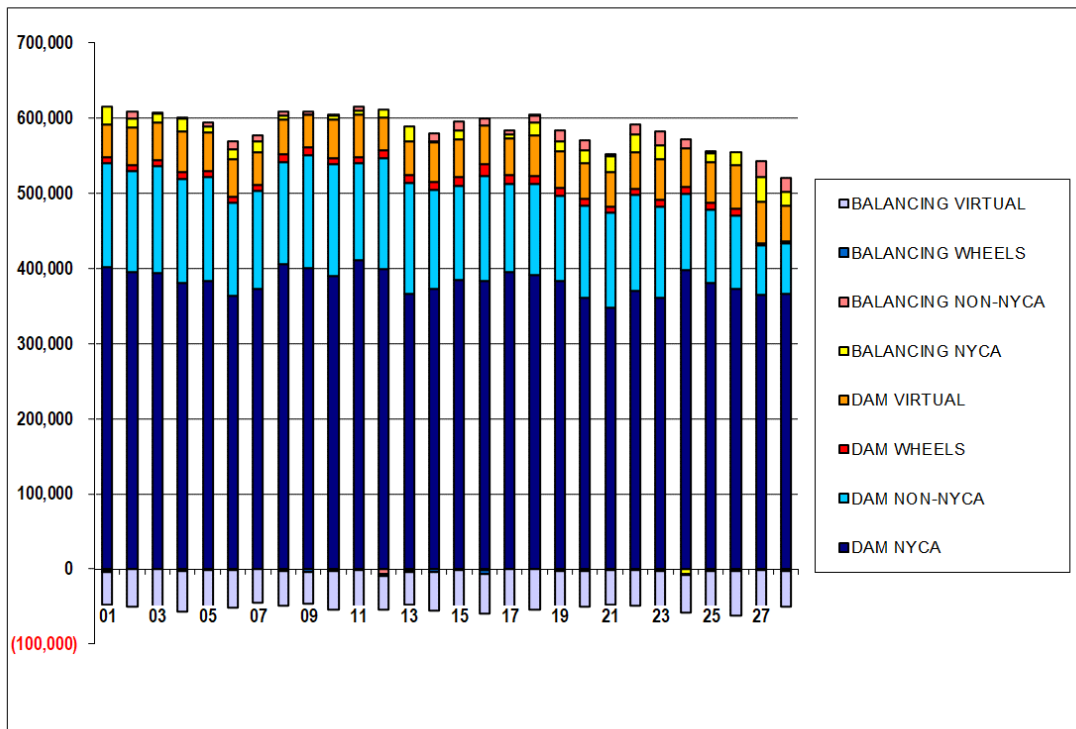
	MONDAY	TUESDAY	WEDNESDAY	THURSDAY	FRIDAY	SATURDAY	SUNDAY
	1	2	3	4	5	6	7
ENERGY	(\$9,625.54)	(\$3,532.53)	(\$4,903.47)	\$26,241.25	\$906.84	\$313.50	\$1,778.24
TRANSMISSION SERVICE	(\$2,023.60)	(\$1,899.89)	(\$1,656.97)	(\$475.52)	(\$1,255.02)	(\$1,269.49)	(\$1,227.60)
UPLIFT	\$13,201.72	(\$67.42)	(\$0.07)	\$64.35	\$1.53	(\$5.72)	\$8.42
RESIDUALS	(\$98.23)	(\$1,512.07)	(\$618.69)	\$25,744.46	(\$1,184.06)	(\$549.34)	(\$2,492.43)
ANCILLARY SERVICES	(\$5,298.00)	(\$4,849.08)	(\$5,960.91)	(\$5,397.99)	(\$6,981.92)	(\$4,968.56)	(\$5,847.20)
TCC	\$3,208.26	\$2,892.66	\$4,227.06	\$4,940.61	\$5,738.22	\$3,716.85	\$4,635.15
	8	9	10	11	12	13	14
ENERGY	\$258.72	(\$842.24)	\$4,786.55	\$3,345.00	\$2,550.14	\$634.78	(\$51.00)
TRANSMISSION SERVICE	(\$1,205.08)	(\$1,307.11)	(\$2,733.08)	(\$1,657.27)	(\$1,515.26)	(\$1,414.67)	(\$1,400.55)
UPLIFT	\$0.09	(\$0.04)	(\$10.24)	\$0.00	(\$12.48)	(\$0.58)	\$1.82
RESIDUALS	(\$767.46)	(\$15,308.77)	(\$4,511.72)	(\$4,096.27)	(\$2,360.73)	(\$293.46)	(\$528.96)
ANCILLARY SERVICES	(\$7,316.32)	(\$6,470.39)	(\$8,038.37)	(\$8,017.29)	(\$9,482.49)	(\$7,363.68)	(\$2,830.65)
TCC	\$6,129.60	\$5,176.71	\$5,347.05	\$6,379.29	\$7,993.29	\$5,974.92	\$1,453.68
	15	16	17	18	19	20	21
ENERGY	\$508.93	(\$1,635.11)	(\$3,750.17)	(\$8,244.90)	(\$835.15)	\$1,522.93	\$4,930.30
TRANSMISSION SERVICE	(\$1,327.41)	(\$1,302.30)	(\$1,426.21)	(\$1,446.05)	(\$1,610.20)	(\$1,326.98)	(\$1,545.75)
UPLIFT	(\$0.93)	(\$0.75)	(\$4.65)	(\$7.84)	(\$12.36)	(\$1.75)	\$27.72
RESIDUALS	\$582.42	\$938.84	\$1,998.03	\$7,147.02	\$13.12	(\$1,647.21)	(\$3,584.38)
ANCILLARY SERVICES	(\$1,647.50)	(\$28,866.93)	(\$13,856.73)	(\$35,200.73)	(\$21,498.18)	(\$642.19)	(\$18,023.18)
TCC	\$350.64	\$27,580.68	\$12,432.48	\$33,773.13	\$19,918.38	(\$666.57)	\$16,517.91
	22	23	24	25	26	27	28
ENERGY	\$4,147.36	\$4,450.46	(\$2,817.89)	\$643.56	\$3,673.21	\$2,384.56	\$1,703.93
TRANSMISSION SERVICE	(\$1,198.15)	(\$1,593.09)	(\$2,467.16)	(\$1,304.11)	(\$1,241.45)	(\$1,216.82)	(\$1,268.55)
UPLIFT	\$0.33	(\$0.01)	(\$0.02)	\$5,102.19	\$0.10	\$0.18	(\$0.14)
RESIDUALS	(\$2,253.82)	(\$1,332.66)	(\$839.47)	(\$410.57)	(\$985.08)	(\$1,003.65)	(\$1,025.77)
ANCILLARY SERVICES	(\$408.87)	\$1,347.16	(\$1,392.50)	(\$727.70)	(\$438.74)	(\$243.19)	(\$2,721.83)
TCC	(\$769.74)	(\$2,903.37)	(\$1,137.06)	(\$664.38)	(\$731.58)	(\$931.56)	\$1,498.32



SETTLEMENTS REPORT
February 2021 Settlement Adjustment
July 8, 2021

Initial Settlement – Market Supply Analysis

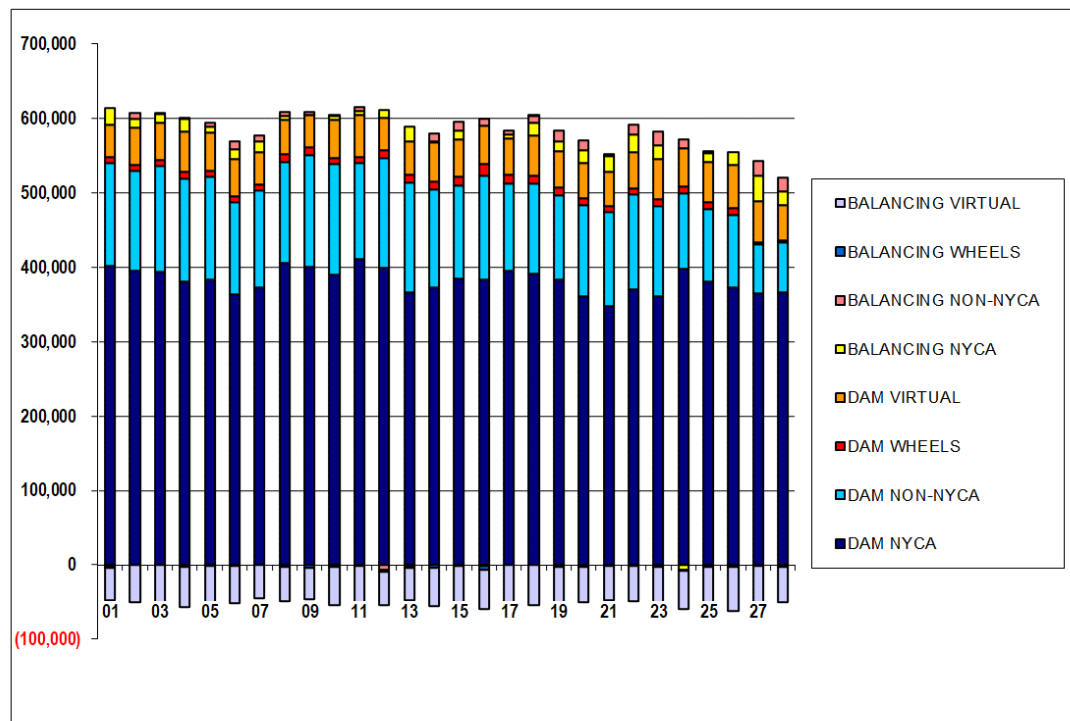
	MONDAY	TUESDAY	WEDNESDAY	THURSDAY	FRIDAY	SATURDAY	SUNDAY
	1	2	3	4	5	6	7
DAM NYCA	401,328	395,784	393,747	381,267	383,708	363,449	372,857
DAM NON-NYCA	138,829	134,566	142,430	137,410	137,932	123,934	130,403
DAM WHEELS	8,106	7,699	7,528	9,662	8,213	8,009	7,814
DAM VIRTUAL	43,785	49,491	50,930	54,707	51,431	50,144	43,717
BALANCING NYCA	22,659	11,689	11,572	16,943	8,348	13,360	14,599
BALANCING NON-NYCA	(2,494)	9,104	1,340	636	5,224	10,037	7,137
BALANCING WHEELS	(826)	(499)	(328)	(2,462)	(893)	(809)	(614)
BALANCING VIRTUAL	(43,785)	(49,491)	(50,930)	(54,707)	(51,431)	(50,144)	(43,717)
	8	9	10	11	12	13	14
DAM NYCA	406,070	400,080	389,803	410,521	399,472	366,080	372,889
DAM NON-NYCA	135,862	150,750	148,782	129,405	147,106	148,168	131,246
DAM WHEELS	9,746	10,662	8,288	8,642	10,203	10,483	10,839
DAM VIRTUAL	46,324	43,174	51,565	56,685	44,343	44,479	52,321
BALANCING NYCA	4,931	271	4,476	5,417	9,922	20,130	1,737
BALANCING NON-NYCA	5,706	4,480	386	4,213	(6,197)	(1,846)	10,949
BALANCING WHEELS	(2,276)	(3,412)	(2,394)	(1,442)	(3,430)	(1,528)	(3,319)
BALANCING VIRTUAL	(46,324)	(43,174)	(51,565)	(56,685)	(44,343)	(44,479)	(52,321)
	15	16	17	18	19	20	21
DAM NYCA	384,119	382,847	394,768	391,931	383,744	361,609	347,974
DAM NON-NYCA	125,593	140,202	117,261	120,117	112,948	121,325	126,028
DAM WHEELS	12,341	15,442	11,830	11,415	10,300	9,296	8,647
DAM VIRTUAL	50,058	52,119	49,740	53,469	48,646	47,853	45,906
BALANCING NYCA	11,883	(868)	5,212	17,427	14,200	17,898	20,541
BALANCING NON-NYCA	11,272	9,565	5,302	8,503	13,819	12,681	3,054
BALANCING WHEELS	(1,586)	(6,049)	(555)	186	(2,140)	(2,096)	(1,447)
BALANCING VIRTUAL	(50,058)	(52,119)	(49,740)	(53,469)	(48,646)	(47,853)	(45,906)
	22	23	24	25	26	27	28
DAM NYCA	370,839	361,149	397,665	380,249	372,661	365,333	365,657
DAM NON-NYCA	127,092	120,667	101,884	97,614	97,557	65,005	67,475
DAM WHEELS	8,166	9,550	9,092	9,261	9,287	2,848	2,997
DAM VIRTUAL	48,353	53,635	50,732	54,393	58,549	55,187	47,216
BALANCING NYCA	24,621	18,392	(6,025)	12,401	16,333	34,050	18,544
BALANCING NON-NYCA	12,476	19,070	12,293	2,712	(902)	20,797	18,029
BALANCING WHEELS	(966)	(2,350)	(1,892)	(2,061)	(2,087)	(1,348)	(2,997)
BALANCING VIRTUAL	(48,353)	(53,635)	(50,732)	(54,393)	(58,549)	(55,187)	(47,216)



SETTLEMENTS REPORT
February 2021 Settlement Adjustment
July 8, 2021

4-Month Settlement Adjustment – Market Supply Analysis

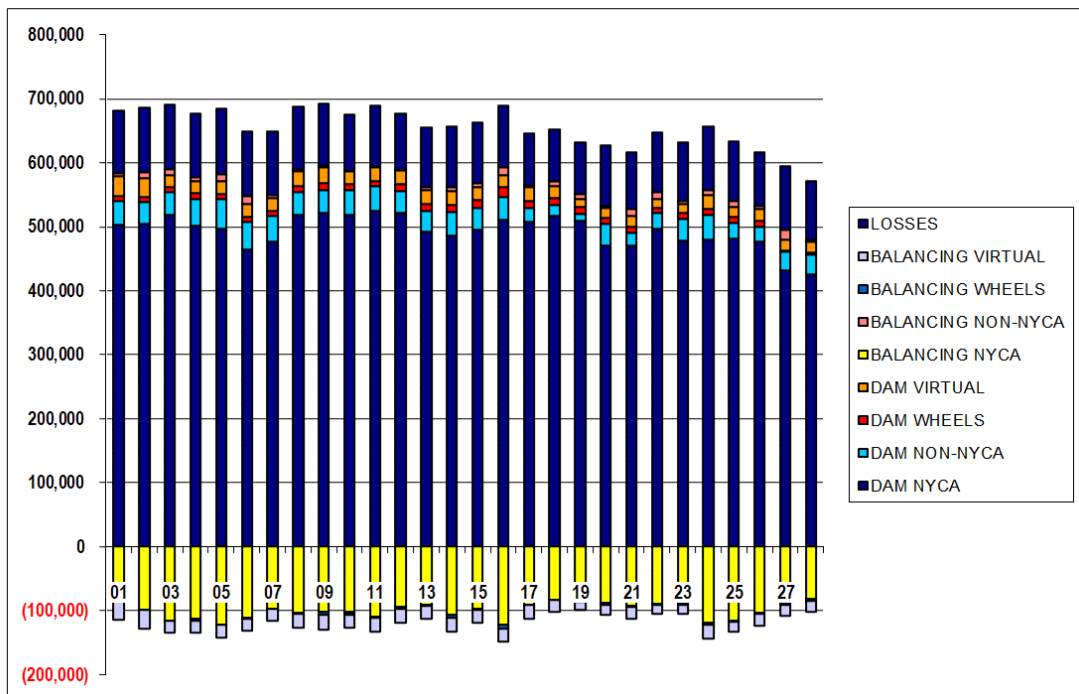
	MONDAY	TUESDAY	WEDNESDAY	THURSDAY	FRIDAY	SATURDAY	SUNDAY
	1	2	3	4	5	6	7
DAM NYCA	401,328	395,784	393,747	381,267	383,708	363,449	372,857
DAM NON-NYCA	138,829	134,566	142,430	137,410	137,932	123,934	130,403
DAM WHEELS	8,106	7,699	7,528	9,662	8,213	8,009	7,814
DAM VIRTUAL	43,785	49,491	50,930	54,707	51,431	50,144	43,717
BALANCING NYCA	22,349	11,399	11,248	16,973	8,322	13,345	14,576
BALANCING NON-NYCA	(2,494)	9,104	1,340	636	5,224	10,037	7,137
BALANCING WHEELS	(826)	(499)	(328)	(2,462)	(893)	(809)	(614)
BALANCING VIRTUAL	(43,785)	(49,491)	(50,930)	(54,707)	(51,431)	(50,144)	(43,717)
	8	9	10	11	12	13	14
DAM NYCA	406,070	400,080	389,803	410,521	399,472	366,080	372,889
DAM NON-NYCA	135,862	150,750	148,782	129,405	147,106	148,168	131,246
DAM WHEELS	9,746	10,662	8,288	8,642	10,203	10,483	10,839
DAM VIRTUAL	46,324	43,174	51,565	56,685	44,343	44,479	52,321
BALANCING NYCA	4,920	241	4,461	5,393	9,915	20,136	1,727
BALANCING NON-NYCA	5,706	4,480	386	4,213	(6,197)	(1,846)	10,949
BALANCING WHEELS	(2,276)	(3,412)	(2,394)	(1,442)	(3,430)	(1,528)	(3,319)
BALANCING VIRTUAL	(46,324)	(43,174)	(51,565)	(56,685)	(44,343)	(44,479)	(52,321)
	15	16	17	18	19	20	21
DAM NYCA	384,119	382,847	394,768	391,931	383,744	361,609	347,974
DAM NON-NYCA	125,593	140,202	117,261	120,117	112,948	121,325	126,028
DAM WHEELS	12,341	15,442	11,830	11,415	10,300	9,296	8,647
DAM VIRTUAL	50,058	52,119	49,740	53,469	48,646	47,853	45,906
BALANCING NYCA	11,904	(881)	5,186	17,412	14,182	17,887	20,556
BALANCING NON-NYCA	11,272	9,565	5,302	8,503	13,819	12,681	3,054
BALANCING WHEELS	(1,586)	(6,049)	(555)	186	(2,140)	(2,096)	(1,447)
BALANCING VIRTUAL	(50,058)	(52,119)	(49,740)	(53,469)	(48,646)	(47,853)	(45,906)
	22	23	24	25	26	27	28
DAM NYCA	370,839	361,149	397,665	380,249	372,661	365,333	365,657
DAM NON-NYCA	127,092	120,667	101,884	97,614	97,557	65,005	67,475
DAM WHEELS	8,166	9,550	9,092	9,261	9,287	2,848	2,997
DAM VIRTUAL	48,353	53,635	50,732	54,393	58,549	55,187	47,216
BALANCING NYCA	24,621	18,427	(6,332)	12,408	16,456	34,114	18,605
BALANCING NON-NYCA	12,476	19,070	12,293	2,712	(902)	20,797	18,029
BALANCING WHEELS	(966)	(2,350)	(1,892)	(2,061)	(2,087)	(1,348)	(2,997)
BALANCING VIRTUAL	(48,353)	(53,635)	(50,732)	(54,393)	(58,549)	(55,187)	(47,216)



SETTLEMENTS REPORT
February 2021 Settlement Adjustment
July 8, 2021

Initial Settlement – Market Withdrawals Analysis

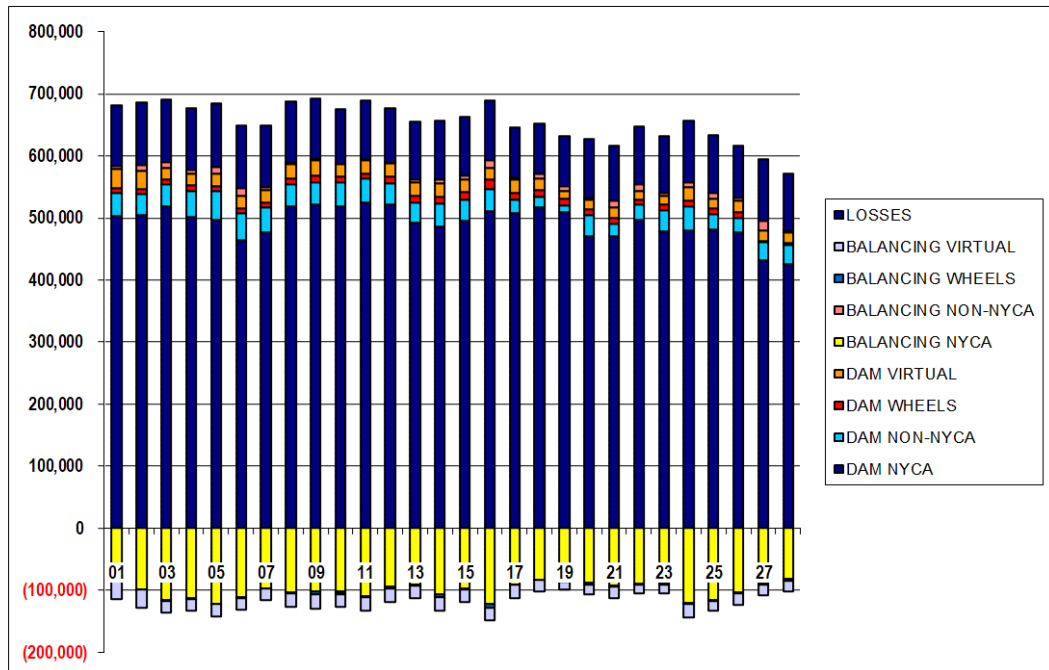
	MONDAY	TUESDAY	WEDNESDAY	THURSDAY	FRIDAY	SATURDAY	SUNDAY
	1	2	3	4	5	6	7
DAM NYCA	502,819	505,308	519,240	502,008	497,259	464,949	476,432
DAM NON-NYCA	36,828	33,500	35,504	41,245	46,264	42,681	41,293
DAM WHEELS	8,106	7,699	7,528	9,662	8,213	8,009	7,814
DAM VIRTUAL	30,672	28,974	18,534	18,506	19,028	19,382	18,995
BALANCING NYCA	(83,112)	(98,041)	(116,145)	(112,975)	(121,757)	(111,530)	(96,804)
BALANCING NON-NYCA	5,720	10,175	9,601	6,257	10,764	13,459	5,132
BALANCING WHEELS	(826)	(499)	(328)	(2,462)	(893)	(809)	(614)
BALANCING VIRTUAL	(30,672)	(28,974)	(18,534)	(18,506)	(19,028)	(19,382)	(18,995)
UFE/LOSSES	98,067	100,202	100,888	99,722	102,681	101,220	98,943
	8	9	10	11	12	13	14
DAM NYCA	518,687	521,292	518,319	524,298	521,563	492,669	486,047
DAM NON-NYCA	35,795	36,869	39,740	38,727	34,921	32,851	37,529
DAM WHEELS	9,746	10,662	8,288	8,642	10,203	10,483	10,839
DAM VIRTUAL	22,185	24,339	20,069	21,544	22,268	21,044	22,028
BALANCING NYCA	(102,622)	(102,467)	(102,539)	(109,114)	(93,948)	(90,551)	(107,045)
BALANCING NON-NYCA	3,157	3,068	(1,408)	1,185	168	5,669	5,678
BALANCING WHEELS	(2,276)	(3,412)	(2,394)	(1,442)	(3,430)	(1,528)	(3,319)
BALANCING VIRTUAL	(22,185)	(24,339)	(20,069)	(21,544)	(22,268)	(21,044)	(22,028)
UFE/LOSSES	97,552	96,819	89,334	94,460	87,600	91,895	94,613
	15	16	17	18	19	20	21
DAM NYCA	495,228	510,899	508,267	517,756	508,746	470,516	470,891
DAM NON-NYCA	33,878	35,180	20,706	16,379	11,498	34,663	19,858
DAM WHEELS	12,341	15,442	11,830	11,415	10,300	9,296	8,647
DAM VIRTUAL	20,062	19,358	21,278	18,726	12,953	15,681	17,946
BALANCING NYCA	(97,856)	(122,651)	(90,568)	(83,566)	(84,273)	(88,521)	(92,879)
BALANCING NON-NYCA	7,096	12,112	3,684	7,490	7,801	2,517	10,363
BALANCING WHEELS	(1,586)	(6,049)	(555)	186	(2,140)	(2,096)	(1,447)
BALANCING VIRTUAL	(20,062)	(19,358)	(21,278)	(18,726)	(12,953)	(15,681)	(17,946)
UFE/LOSSES	94,521	96,206	80,455	79,921	80,939	94,337	89,364
	22	23	24	25	26	27	28
DAM NYCA	496,816	478,541	479,135	480,682	477,192	431,918	425,072
DAM NON-NYCA	24,998	33,565	39,597	25,632	23,042	28,600	30,997
DAM WHEELS	8,166	9,550	9,092	9,261	9,287	2,848	2,997
DAM VIRTUAL	14,239	14,137	21,978	15,553	18,682	17,238	17,091
BALANCING NYCA	(89,308)	(88,819)	(119,440)	(115,868)	(103,178)	(89,247)	(81,189)
BALANCING NON-NYCA	10,303	4,777	7,716	9,781	3,877	15,113	4,415
BALANCING WHEELS	(966)	(2,350)	(1,892)	(2,061)	(2,087)	(1,348)	(2,997)
BALANCING VIRTUAL	(14,239)	(14,137)	(21,978)	(15,553)	(18,682)	(17,238)	(17,091)
UFE/LOSSES	92,219	91,214	98,808	92,749	84,715	98,801	90,410



SETTLEMENTS REPORT
February 2021 Settlement Adjustment
July 8, 2021

4-Month Settlement Adjustment – Market Withdrawals Analysis

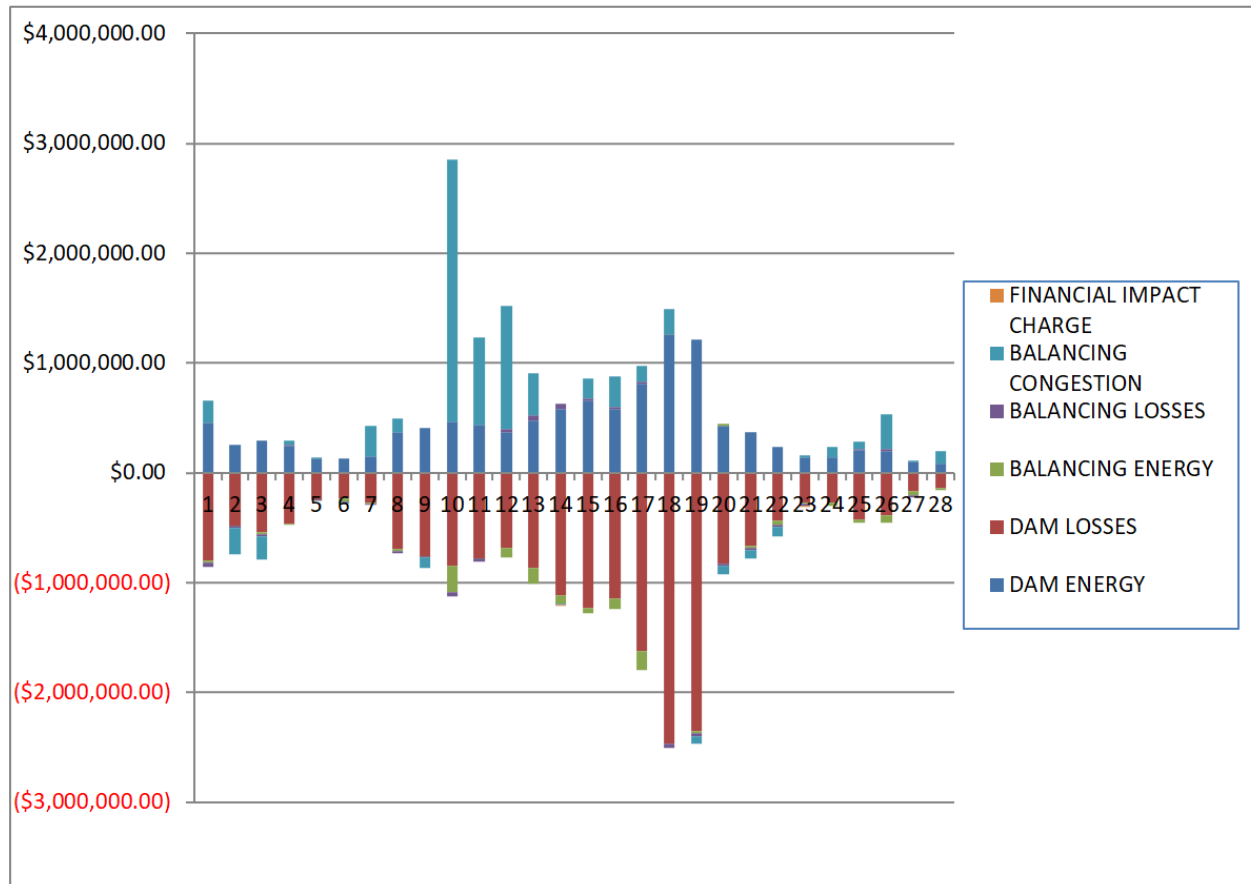
	MONDAY	TUESDAY	WEDNESDAY	THURSDAY	FRIDAY	SATURDAY	SUNDAY
	1	2	3	4	5	6	7
DAM NYCA	502,819	505,308	519,240	502,008	497,259	464,949	476,432
DAM NON-NYCA	36,828	33,500	35,504	41,245	46,264	42,681	41,293
DAM WHEELS	8,106	7,699	7,528	9,662	8,213	8,009	7,814
DAM VIRTUAL	30,672	28,974	18,534	18,506	19,028	19,382	18,995
BALANCING NYCA	(83,420)	(98,322)	(116,472)	(112,216)	(121,786)	(111,541)	(96,824)
BALANCING NON-NYCA	5,720	10,175	9,601	6,257	10,764	13,459	5,132
BALANCING WHEELS	(826)	(499)	(328)	(2,462)	(893)	(809)	(614)
BALANCING VIRTUAL	(30,672)	(28,974)	(18,534)	(18,506)	(19,028)	(19,382)	(18,995)
UFE/LOSSES	98,065	100,192	100,890	98,992	102,684	101,215	98,939
	8	9	10	11	12	13	14
DAM NYCA	518,687	521,292	518,319	524,298	521,563	492,669	486,047
DAM NON-NYCA	35,795	36,869	39,740	38,727	34,921	32,851	37,529
DAM WHEELS	9,746	10,662	8,288	8,642	10,203	10,483	10,839
DAM VIRTUAL	22,185	24,339	20,069	21,544	22,268	21,044	22,028
BALANCING NYCA	(102,631)	(102,496)	(102,552)	(109,139)	(93,952)	(90,546)	(107,054)
BALANCING NON-NYCA	3,157	3,068	(1,408)	1,185	168	5,669	5,678
BALANCING WHEELS	(2,276)	(3,412)	(2,394)	(1,442)	(3,430)	(1,528)	(3,319)
BALANCING VIRTUAL	(22,185)	(24,339)	(20,069)	(21,544)	(22,268)	(21,044)	(22,028)
UFE/LOSSES	97,550	96,818	89,332	94,461	87,596	91,896	94,612
	15	16	17	18	19	20	21
DAM NYCA	495,228	510,899	508,267	517,756	508,746	470,516	470,891
DAM NON-NYCA	33,878	35,180	20,706	16,379	11,498	34,663	19,858
DAM WHEELS	12,341	15,442	11,830	11,415	10,300	9,296	8,647
DAM VIRTUAL	20,062	19,358	21,278	18,726	12,953	15,681	17,946
BALANCING NYCA	(97,834)	(122,664)	(90,591)	(83,584)	(84,289)	(88,531)	(92,832)
BALANCING NON-NYCA	7,096	12,112	3,684	7,490	7,801	2,517	10,363
BALANCING WHEELS	(1,586)	(6,049)	(555)	186	(2,140)	(2,096)	(1,447)
BALANCING VIRTUAL	(20,062)	(19,358)	(21,278)	(18,726)	(12,953)	(15,681)	(17,946)
UFE/LOSSES	94,519	96,207	80,452	79,924	80,938	94,336	89,333
	22	23	24	25	26	27	28
DAM NYCA	496,816	478,541	479,135	480,682	477,192	431,918	425,072
DAM NON-NYCA	24,998	33,565	39,597	25,632	23,042	28,600	30,997
DAM WHEELS	8,166	9,550	9,092	9,261	9,287	2,848	2,997
DAM VIRTUAL	14,239	14,137	21,978	15,553	18,682	17,238	17,091
BALANCING NYCA	(89,306)	(88,782)	(119,764)	(115,849)	(103,046)	(89,178)	(81,125)
BALANCING NON-NYCA	10,303	4,777	7,716	9,781	3,877	15,113	4,415
BALANCING WHEELS	(966)	(2,350)	(1,892)	(2,061)	(2,087)	(1,348)	(2,997)
BALANCING VIRTUAL	(14,239)	(14,137)	(21,978)	(15,553)	(18,682)	(17,238)	(17,091)
UFE/LOSSES	92,217	91,211	98,825	93,133	84,707	98,796	90,407



SETTLEMENTS REPORT
February 2021 Settlement Adjustment
July 8, 2021

Initial Settlement – Market Residuals Analysis

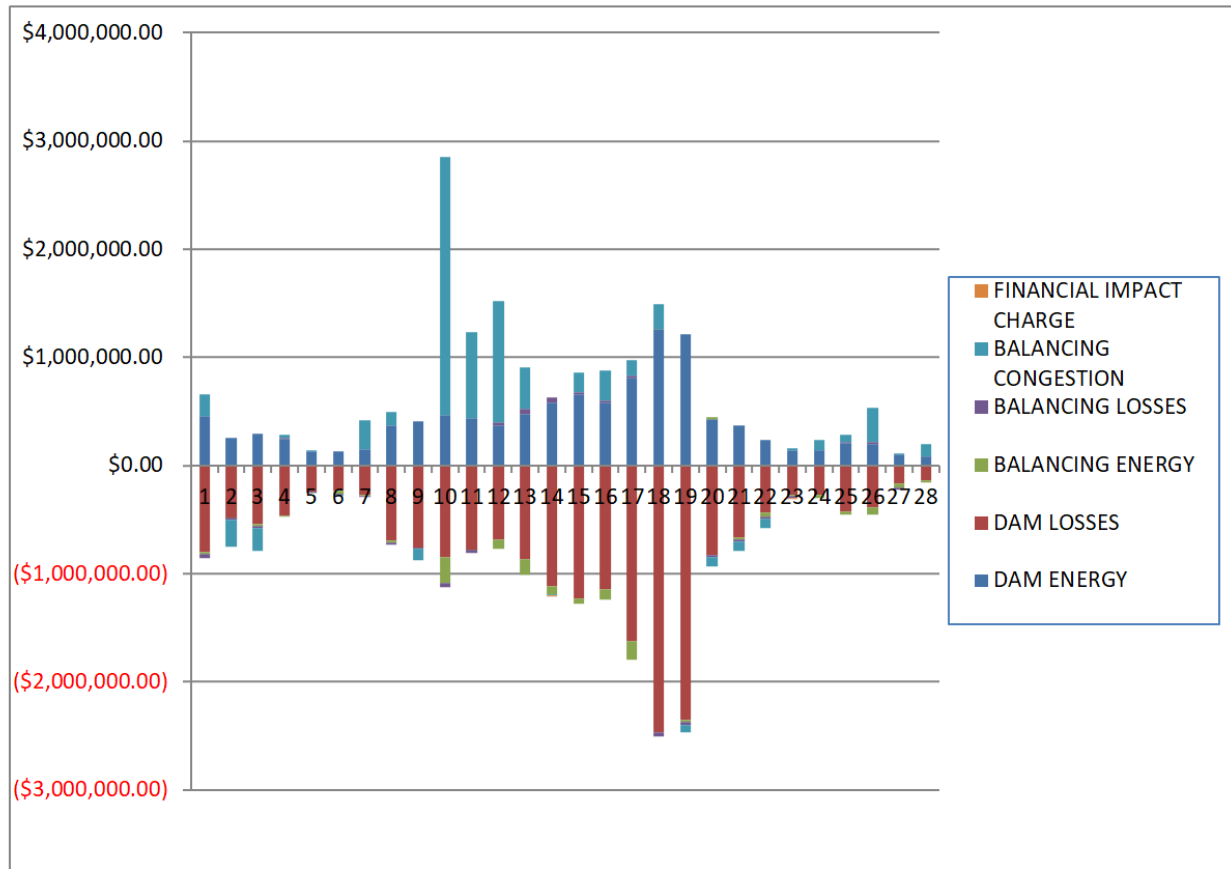
	MONDAY	TUESDAY	WEDNESDAY	THURSDAY	FRIDAY	SATURDAY	SUNDAY
	1	2	3	4	5	6	7
DAM ENERGY	\$458,260.47	\$255,952.24	\$298,397.32	\$251,116.33	\$129,050.78	\$130,695.93	\$151,071.66
DAM LOSSES	(\$798,971.57)	(\$477,963.14)	(\$542,020.65)	(\$459,666.20)	(\$238,325.32)	(\$233,149.55)	(\$272,793.42)
BALANCING ENERGY	(\$22,867.06)	(\$4,556.23)	(\$15,781.23)	(\$1,695.44)	(\$1,505.94)	(\$31,757.20)	(\$11,446.55)
BALANCING LOSSES	(\$29,149.38)	(\$19,197.92)	(\$17,962.29)	\$2,121.00	(\$3,093.01)	(\$6,522.34)	(\$10,427.33)
BALANCING CONGESTION	\$196,587.02	(\$242,793.83)	(\$208,204.76)	\$36,660.63	\$13,677.51	(\$2,950.47)	\$274,111.69
FINACIAL IMPACT CHARGE	\$0.00	\$0.00	\$0.00	\$0.00	\$0.00	\$0.00	\$0.00
	8	9	10	11	12	13	14
DAM ENERGY	\$372,365.42	\$409,091.59	\$469,647.22	\$437,093.92	\$374,880.08	\$473,558.61	\$581,810.56
DAM LOSSES	(\$688,139.73)	(\$755,109.98)	(\$842,434.96)	(\$779,448.96)	(\$679,871.17)	(\$868,684.57)	(\$1,112,879.26)
BALANCING ENERGY	(\$24,748.64)	(\$228.10)	(\$239,086.19)	(\$2,339.07)	(\$90,530.85)	(\$140,214.87)	(\$79,197.33)
BALANCING LOSSES	(\$18,226.79)	(\$17,069.03)	(\$45,453.31)	(\$25,150.58)	\$25,053.21	\$52,962.63	\$45,439.63
BALANCING CONGESTION	\$122,138.24	(\$90,535.86)	\$2,383,180.21	\$795,732.27	\$1,124,464.02	\$382,292.04	(\$10,445.13)
FINACIAL IMPACT CHARGE	\$0.00	\$0.00	\$0.00	\$0.00	\$0.00	\$0.00	(\$151.30)
	15	16	17	18	19	20	21
DAM ENERGY	\$658,859.58	\$577,869.23	\$812,041.81	\$1,258,709.56	\$1,211,652.01	\$432,140.55	\$366,517.22
DAM LOSSES	(\$1,227,202.20)	(\$1,146,169.76)	(\$1,621,024.07)	(\$2,462,960.49)	(\$2,353,099.98)	(\$827,554.30)	(\$668,331.44)
BALANCING ENERGY	(\$46,223.27)	(\$89,672.97)	(\$173,981.40)	\$5,854.59	(\$12,777.17)	\$14,974.25	(\$16,893.36)
BALANCING LOSSES	\$19,231.32	\$21,370.86	\$20,630.79	(\$37,274.67)	(\$34,604.42)	(\$16,593.18)	(\$14,116.41)
BALANCING CONGESTION	\$180,783.97	\$276,326.24	\$141,694.92	\$224,666.66	(\$62,031.10)	(\$82,809.31)	(\$84,140.43)
FINACIAL IMPACT CHARGE	\$0.00	\$0.00	\$0.00	\$0.00	\$0.00	\$0.00	\$0.00
	22	23	24	25	26	27	28
DAM ENERGY	\$238,552.47	\$143,160.98	\$140,271.16	\$212,678.55	\$197,295.80	\$99,875.28	\$87,426.65
DAM LOSSES	(\$434,145.96)	(\$266,769.86)	(\$269,895.31)	(\$421,070.67)	(\$389,993.10)	(\$163,584.30)	(\$140,979.13)
BALANCING ENERGY	(\$36,276.06)	(\$15,903.35)	(\$31,194.61)	(\$31,589.79)	(\$66,050.15)	(\$38,482.60)	(\$12,479.66)
BALANCING LOSSES	(\$16,530.79)	(\$16,060.78)	\$3,773.95	\$3,621.26	\$22,486.57	(\$22,774.87)	\$471.72
BALANCING CONGESTION	(\$87,835.85)	\$18,633.57	\$97,237.79	\$66,369.58	\$316,254.98	\$13,554.31	\$107,912.85
FINACIAL IMPACT CHARGE	\$0.00	(\$9,875.40)	\$0.00	\$0.00	\$0.00	\$0.00	\$0.00



SETTLEMENTS REPORT
February 2021 Settlement Adjustment
July 8, 2021

4-Month Settlement Adjustment – Market Residuals Analysis

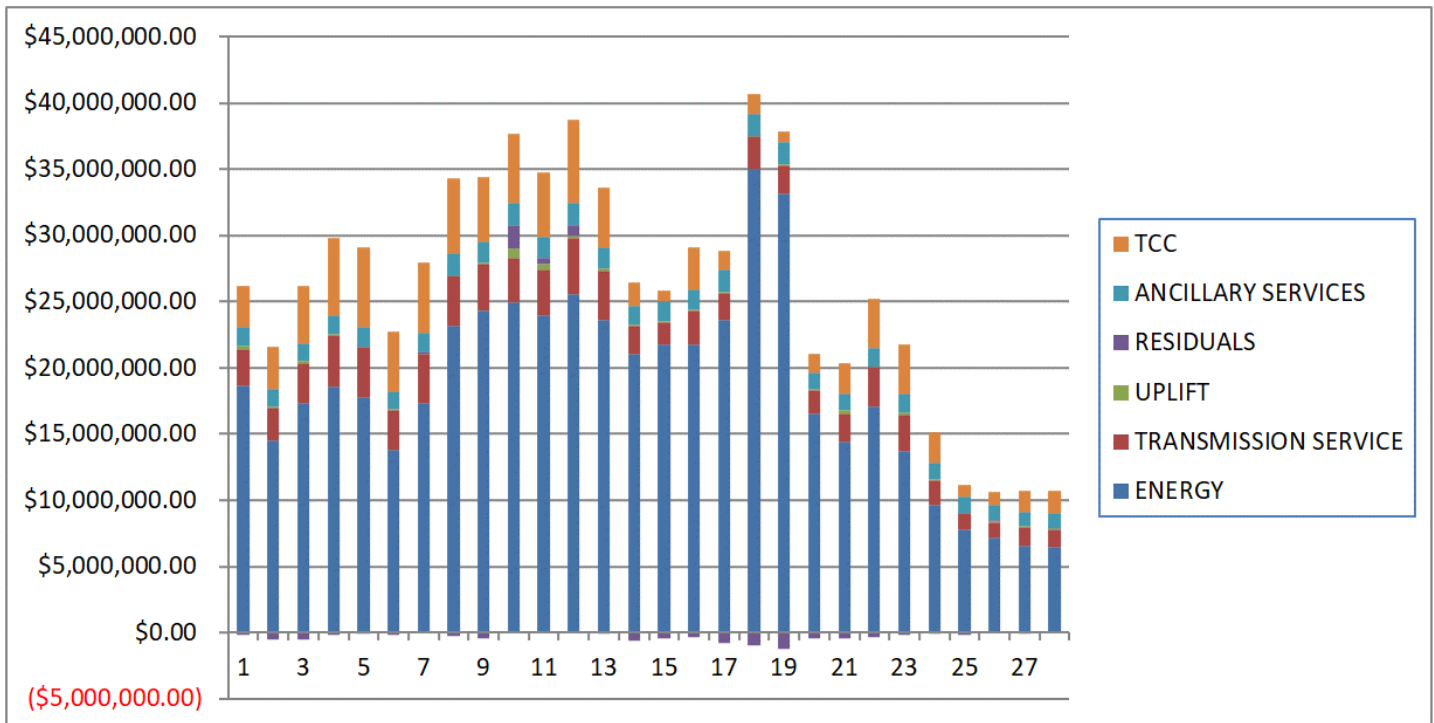
	MONDAY	TUESDAY	WEDNESDAY	THURSDAY	FRIDAY	SATURDAY	SUNDAY
	1	2	3	4	5	6	7
DAM ENERGY	\$458,260.48	\$255,952.24	\$298,397.33	\$251,116.32	\$129,050.77	\$130,695.93	\$151,071.66
DAM LOSSES	(\$798,971.57)	(\$477,963.14)	(\$542,020.64)	(\$459,666.20)	(\$238,325.32)	(\$233,149.54)	(\$272,793.41)
BALANCING ENERGY	(\$22,861.85)	(\$4,731.54)	(\$15,706.44)	(\$9,159.01)	(\$1,488.85)	(\$31,790.14)	(\$11,453.20)
BALANCING LOSSES	(\$29,070.96)	(\$19,071.38)	(\$17,715.12)	\$2,031.98	(\$3,105.07)	(\$6,563.83)	(\$10,458.78)
BALANCING CONGESTION	\$196,405.15	(\$244,257.13)	(\$209,145.43)	\$28,989.34	\$12,488.43	(\$3,425.39)	\$271,657.35
FINANCIAL IMPACT CHARGE	\$0.00	\$0.00	\$0.00	\$0.00	\$0.00	\$0.00	\$0.00
	8	9	10	11	12	13	14
DAM ENERGY	\$372,365.42	\$409,091.58	\$469,647.22	\$437,093.93	\$374,880.09	\$473,558.61	\$581,810.55
DAM LOSSES	(\$688,139.72)	(\$755,109.99)	(\$842,434.96)	(\$779,448.97)	(\$679,871.17)	(\$868,684.56)	(\$1,112,879.26)
BALANCING ENERGY	(\$24,694.08)	(\$224.75)	(\$239,158.24)	(\$2,332.67)	(\$90,587.28)	(\$140,165.74)	(\$79,258.69)
BALANCING LOSSES	(\$18,115.19)	(\$17,081.21)	(\$45,334.15)	(\$25,207.40)	\$25,093.95	\$52,834.49	\$45,432.79
BALANCING CONGESTION	\$121,204.61	(\$105,835.78)	\$2,378,621.38	\$791,686.42	\$1,122,118.97	\$382,077.58	(\$10,905.99)
FINANCIAL IMPACT CHARGE	\$0.00	\$0.00	\$0.00	\$0.00	\$0.00	\$0.00	(\$151.19)
	15	16	17	18	19	20	21
DAM ENERGY	\$658,859.58	\$577,869.23	\$812,041.80	\$1,258,709.57	\$1,211,652.01	\$432,140.54	\$366,517.22
DAM LOSSES	(\$1,227,202.19)	(\$1,146,169.76)	(\$1,621,024.07)	(\$2,462,960.49)	(\$2,353,099.98)	(\$827,554.29)	(\$668,331.44)
BALANCING ENERGY	(\$46,288.20)	(\$89,645.41)	(\$174,210.32)	\$6,072.37	(\$12,843.04)	\$14,980.65	(\$17,305.58)
BALANCING LOSSES	\$19,223.75	\$21,452.81	\$21,226.28	(\$36,147.98)	(\$33,958.57)	(\$16,508.00)	(\$14,076.27)
BALANCING CONGESTION	\$181,438.88	\$277,155.57	\$143,326.39	\$230,469.20	(\$62,597.96)	(\$84,548.10)	(\$87,352.73)
FINANCIAL IMPACT CHARGE	\$0.00	\$0.00	\$0.00	\$0.00	\$0.00	\$0.00	\$0.00
	22	23	24	25	26	27	28
DAM ENERGY	\$238,552.47	\$143,160.97	\$140,271.16	\$212,678.55	\$197,295.79	\$99,875.28	\$87,426.65
DAM LOSSES	(\$434,145.97)	(\$266,769.87)	(\$269,895.31)	(\$421,070.67)	(\$389,993.09)	(\$163,584.31)	(\$140,979.12)
BALANCING ENERGY	(\$36,360.23)	(\$16,029.26)	(\$30,992.03)	(\$31,731.94)	(\$66,204.26)	(\$38,538.59)	(\$12,501.50)
BALANCING LOSSES	(\$16,495.26)	(\$16,059.88)	\$3,934.29	\$3,649.57	\$22,471.82	(\$22,797.78)	\$464.50
BALANCING CONGESTION	(\$90,041.02)	\$17,425.94	\$96,035.40	\$66,072.85	\$315,438.76	\$12,629.57	\$106,916.13
FINANCIAL IMPACT CHARGE	\$0.00	(\$9,875.40)	\$0.00	\$0.00	\$0.00	\$0.00	\$0.00



SETTLEMENTS REPORT
February 2021 Settlement Adjustment
July 8, 2021

Initial Settlement – Market Costs Analysis

	MONDAY	TUESDAY	WEDNESDAY	THURSDAY	FRIDAY	SATURDAY	SUNDAY
	1	2	3	4	5	6	7
ENERGY	\$18,695,242.35	\$14,474,253.00	\$17,331,103.22	\$18,613,018.67	\$17,789,639.98	\$13,848,222.18	\$17,314,343.47
TRANSMISSION SERVICE	\$2,695,298.47	\$2,520,792.68	\$3,064,288.40	\$3,838,269.66	\$3,778,394.05	\$2,993,575.80	\$3,709,082.16
UPLIFT	\$272,108.06	\$69,126.62	\$116,818.86	\$92,091.80	\$25,349.02	\$51,194.47	\$59,893.60
RESIDUALS	(\$196,140.52)	(\$488,558.88)	(\$485,571.61)	(\$171,463.68)	(\$100,195.98)	(\$143,683.63)	\$130,516.05
ANCILLARY SERVICES	\$1,475,373.52	\$1,376,267.39	\$1,355,618.09	\$1,440,935.37	\$1,461,135.79	\$1,325,145.14	\$1,455,160.89
TCC	\$3,069,152.88	\$3,170,826.05	\$4,291,428.38	\$5,820,873.57	\$6,031,432.20	\$4,547,649.04	\$5,317,885.28
	8	9	10	11	12	13	14
ENERGY	\$23,192,462.97	\$24,352,565.19	\$24,957,561.55	\$23,968,236.47	\$25,574,960.03	\$23,658,224.24	\$21,060,946.27
TRANSMISSION SERVICE	\$3,790,232.51	\$3,550,874.15	\$3,385,263.06	\$3,487,099.19	\$4,205,311.00	\$3,715,829.90	\$2,145,148.07
UPLIFT	\$34,097.71	\$19,448.82	\$719,457.61	\$395,031.73	\$237,793.75	\$171,763.39	\$44,481.74
RESIDUALS	(\$236,611.50)	(\$453,851.38)	\$1,725,852.97	\$425,887.58	\$753,995.29	(\$100,086.16)	(\$575,422.83)
ANCILLARY SERVICES	\$1,617,045.00	\$1,609,305.01	\$1,680,548.26	\$1,601,873.48	\$1,715,524.23	\$1,559,859.35	\$1,408,447.57
TCC	\$5,716,395.98	\$4,897,471.98	\$5,246,843.00	\$4,928,322.42	\$6,276,104.26	\$4,486,384.96	\$1,765,658.18
	15	16	17	18	19	20	21
ENERGY	\$21,754,924.76	\$21,752,374.40	\$23,662,089.52	\$35,073,654.99	\$33,193,836.81	\$16,507,992.05	\$14,390,452.90
TRANSMISSION SERVICE	\$1,724,376.30	\$2,619,059.33	\$2,036,972.68	\$2,397,865.79	\$2,134,382.67	\$1,773,683.49	\$2,189,096.37
UPLIFT	\$23,517.35	\$13,318.63	\$88,238.25	\$36,113.11	\$83,439.73	\$100,183.02	\$217,530.59
RESIDUALS	(\$414,550.60)	(\$360,276.40)	(\$820,637.95)	(\$1,011,004.35)	(\$1,250,860.66)	(\$479,841.99)	(\$416,964.42)
ANCILLARY SERVICES	\$1,506,168.28	\$1,530,846.84	\$1,620,766.68	\$1,705,105.55	\$1,636,008.46	\$1,288,399.77	\$1,288,026.97
TCC	\$840,808.94	\$3,232,830.31	\$1,444,163.95	\$1,497,861.81	\$855,171.83	\$1,378,436.61	\$2,262,563.82
	22	23	24	25	26	27	28
ENERGY	\$17,056,492.39	\$13,711,218.69	\$9,633,614.71	\$7,773,552.07	\$7,151,754.11	\$6,581,438.02	\$6,459,481.33
TRANSMISSION SERVICE	\$2,993,193.00	\$2,788,679.70	\$1,898,631.80	\$1,225,235.82	\$1,197,800.83	\$1,360,791.51	\$1,373,267.83
UPLIFT	\$66,009.77	\$128,607.48	\$60,781.47	\$70,484.89	\$67,165.23	\$71,757.61	\$39,897.31
RESIDUALS	(\$336,236.19)	(\$146,814.84)	(\$59,807.02)	(\$169,991.07)	\$79,994.10	(\$111,412.18)	\$42,352.43
ANCILLARY SERVICES	\$1,418,649.17	\$1,399,154.66	\$1,256,313.16	\$1,197,138.84	\$1,170,342.71	\$1,100,869.60	\$1,104,683.22
TCC	\$3,677,435.08	\$3,713,998.49	\$2,294,494.19	\$840,776.90	\$913,695.20	\$1,564,584.32	\$1,647,228.26



SETTLEMENTS REPORT
February 2021 Settlement Adjustment
July 8, 2021

4-Month Settlement Adjustment – Market Costs Analysis

	MONDAY	TUESDAY	WEDNESDAY	THURSDAY	FRIDAY	SATURDAY	SUNDAY
	1	2	3	4	5	6	7
ENERGY	\$18,685,616.81	\$14,470,720.47	\$17,326,199.75	\$18,630,034.18	\$17,790,546.82	\$13,848,535.68	\$17,316,121.71
TRANSMISSION SERVICE	\$2,693,274.87	\$2,518,892.79	\$3,062,631.43	\$3,837,794.14	\$3,777,139.03	\$2,992,306.31	\$3,707,854.56
UPLIFT	\$285,309.78	\$69,059.20	\$116,818.79	\$92,156.15	\$25,350.55	\$51,188.75	\$59,902.02
RESIDUALS	(\$196,238.75)	(\$490,070.95)	(\$486,190.30)	(\$186,687.57)	(\$101,380.04)	(\$144,232.97)	\$128,023.62
ANCILLARY SERVICES	\$1,470,075.52	\$1,371,418.31	\$1,349,657.18	\$1,435,537.38	\$1,454,153.87	\$1,320,176.58	\$1,449,313.69
TCC	\$3,072,361.14	\$3,173,718.71	\$4,295,655.44	\$5,825,814.18	\$6,037,170.42	\$4,551,365.89	\$5,322,520.43
	8	9	10	11	12	13	14
ENERGY	\$23,192,721.69	\$24,351,722.95	\$24,962,348.10	\$23,971,581.47	\$25,577,510.17	\$23,658,859.02	\$21,060,895.27
TRANSMISSION SERVICE	\$3,789,027.43	\$3,549,567.04	\$3,382,529.98	\$3,485,441.92	\$4,203,795.74	\$3,714,415.23	\$2,143,747.52
UPLIFT	\$34,097.80	\$19,448.78	\$719,447.37	\$395,031.73	\$237,781.27	\$171,762.81	\$44,483.56
RESIDUALS	(\$237,378.96)	(\$469,160.15)	\$1,721,341.25	\$421,791.31	\$751,634.56	(\$100,379.62)	(\$575,951.79)
ANCILLARY SERVICES	\$1,609,728.68	\$1,602,834.62	\$1,672,509.89	\$1,593,856.19	\$1,706,041.74	\$1,552,495.67	\$1,405,616.92
TCC	\$5,722,525.58	\$4,902,648.69	\$5,252,190.05	\$4,934,701.71	\$6,284,097.55	\$4,492,359.88	\$1,767,111.86
	15	16	17	18	19	20	21
ENERGY	\$21,755,433.69	\$21,750,739.29	\$23,658,339.35	\$35,065,410.09	\$33,193,001.66	\$16,509,514.98	\$14,395,383.20
TRANSMISSION SERVICE	\$1,723,048.89	\$2,617,757.03	\$2,035,546.47	\$2,396,419.74	\$2,132,772.47	\$1,772,356.51	\$2,187,550.62
UPLIFT	\$23,516.42	\$13,317.88	\$88,233.60	\$36,105.27	\$83,427.37	\$100,181.27	\$217,558.31
RESIDUALS	(\$413,968.18)	(\$359,337.56)	(\$818,639.92)	(\$1,003,857.33)	(\$1,250,847.54)	(\$481,489.20)	(\$420,548.80)
ANCILLARY SERVICES	\$1,504,520.78	\$1,501,979.91	\$1,606,909.95	\$1,669,904.82	\$1,614,510.28	\$1,287,757.58	\$1,270,003.79
TCC	\$841,159.58	\$3,260,410.99	\$1,456,596.43	\$1,531,634.94	\$875,090.21	\$1,377,770.04	\$2,279,081.73
	22	23	24	25	26	27	28
ENERGY	\$17,060,639.75	\$13,715,669.15	\$9,630,796.82	\$7,774,195.63	\$7,155,427.32	\$6,583,822.58	\$6,461,185.26
TRANSMISSION SERVICE	\$2,991,994.85	\$2,787,086.61	\$1,896,164.64	\$1,223,931.71	\$1,196,559.38	\$1,359,574.69	\$1,371,999.28
UPLIFT	\$66,010.10	\$128,607.47	\$60,781.45	\$75,587.08	\$67,165.33	\$71,757.79	\$39,897.17
RESIDUALS	(\$338,490.01)	(\$148,147.50)	(\$60,646.49)	(\$170,401.64)	\$79,009.02	(\$112,415.83)	\$41,326.66
ANCILLARY SERVICES	\$1,418,240.30	\$1,400,501.82	\$1,254,920.66	\$1,196,411.14	\$1,169,903.97	\$1,100,626.41	\$1,101,961.39
TCC	\$3,676,665.34	\$3,711,095.12	\$2,293,357.13	\$840,112.52	\$912,963.62	\$1,563,652.76	\$1,648,726.58

