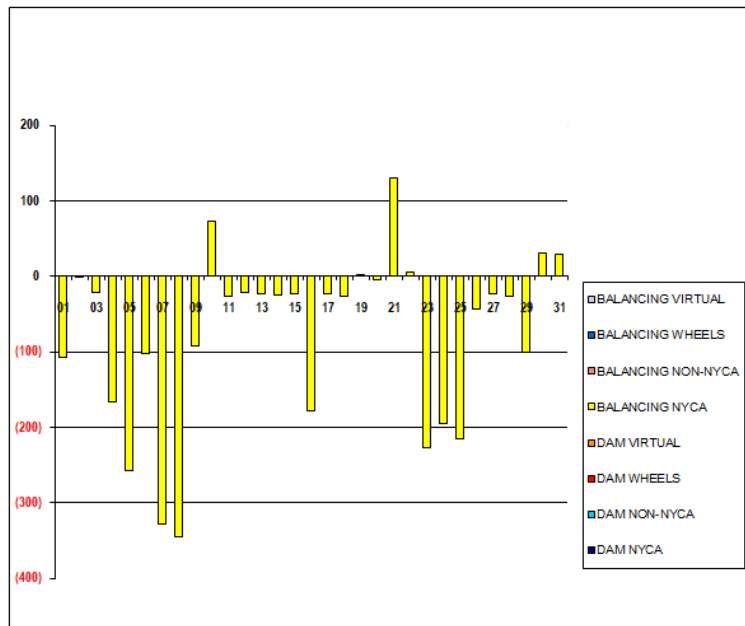


SETTLEMENTS REPORT
 March 2018 Settlement Adjustment
 August 7, 2018

Settlement Adjustment – Market Supply Delta Analysis

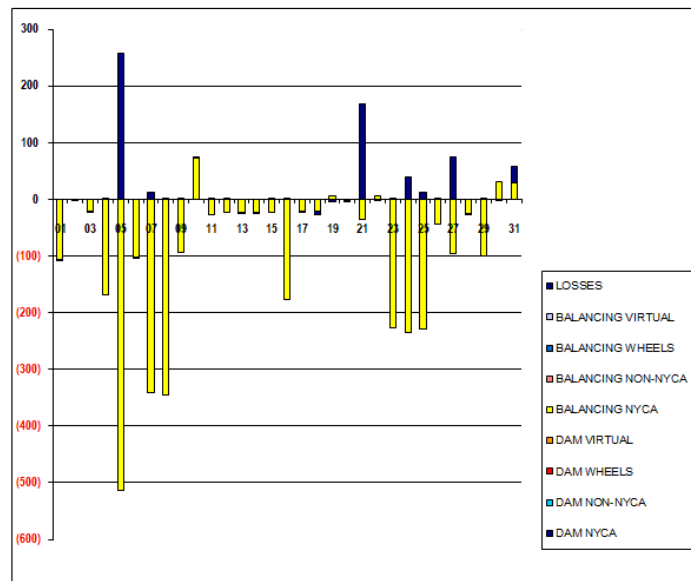
	MONDAY	TUESDAY	WEDNESDAY	THURSDAY	FRIDAY	SATURDAY	SUNDAY
				1	2	3	4
DAM NYCA				0	0	0	0
DAM NON-NYCA				0	0	0	0
DAM WHEELS				0	0	0	0
DAM VIRTUAL				0	0	0	0
BALANCING NYCA				(107)	(1)	(22)	(166)
BALANCING NON-NYCA				0	0	0	0
BALANCING WHEELS				0	0	0	0
BALANCING VIRTUAL				0	0	0	0
	5	6	7	8	9	10	11
DAM NYCA	0	0	0	0	0	0	0
DAM NON-NYCA	0	0	0	0	0	0	0
DAM WHEELS	0	0	0	0	0	0	0
DAM VIRTUAL	0	0	0	0	0	0	0
BALANCING NYCA	(257)	(102)	(328)	(345)	(93)	73	(26)
BALANCING NON-NYCA	0	0	0	0	0	0	0
BALANCING WHEELS	0	0	0	0	0	0	0
BALANCING VIRTUAL	0	0	0	0	0	0	0
	12	13	14	15	16	17	18
DAM NYCA	0	0	0	0	0	0	0
DAM NON-NYCA	0	0	0	0	0	0	0
DAM WHEELS	0	0	0	0	0	0	0
DAM VIRTUAL	0	0	0	0	0	0	0
BALANCING NYCA	(22)	(24)	(24)	(23)	(178)	(23)	(26)
BALANCING NON-NYCA	0	0	0	0	0	0	0
BALANCING WHEELS	0	0	0	0	0	0	0
BALANCING VIRTUAL	0	0	0	0	0	0	0
	19	20	21	22	23	24	25
DAM NYCA	0	0	0	0	0	0	0
DAM NON-NYCA	0	0	0	0	0	0	0
DAM WHEELS	0	0	0	0	0	0	0
DAM VIRTUAL	0	0	0	0	0	0	0
BALANCING NYCA	2	(5)	130	5	(227)	(195)	(216)
BALANCING NON-NYCA	0	0	0	0	0	0	0
BALANCING WHEELS	0	0	0	0	0	0	0
BALANCING VIRTUAL	0	0	0	0	0	0	0
	26	27	28	29	30	31	
DAM NYCA	0	0	0	0	0	0	
DAM NON-NYCA	0	0	0	0	0	0	
DAM WHEELS	0	0	0	0	0	0	
DAM VIRTUAL	0	0	0	0	0	0	
BALANCING NYCA	(44)	(23)	(26)	(100)	30	29	
BALANCING NON-NYCA	0	0	0	0	0	0	
BALANCING WHEELS	0	0	0	0	0	0	
BALANCING VIRTUAL	0	0	0	0	0	0	



SETTLEMENTS REPORT
 March 2018 Settlement Adjustment
 August 7, 2018

Settlement Adjustment – Market Withdrawals Delta Analysis

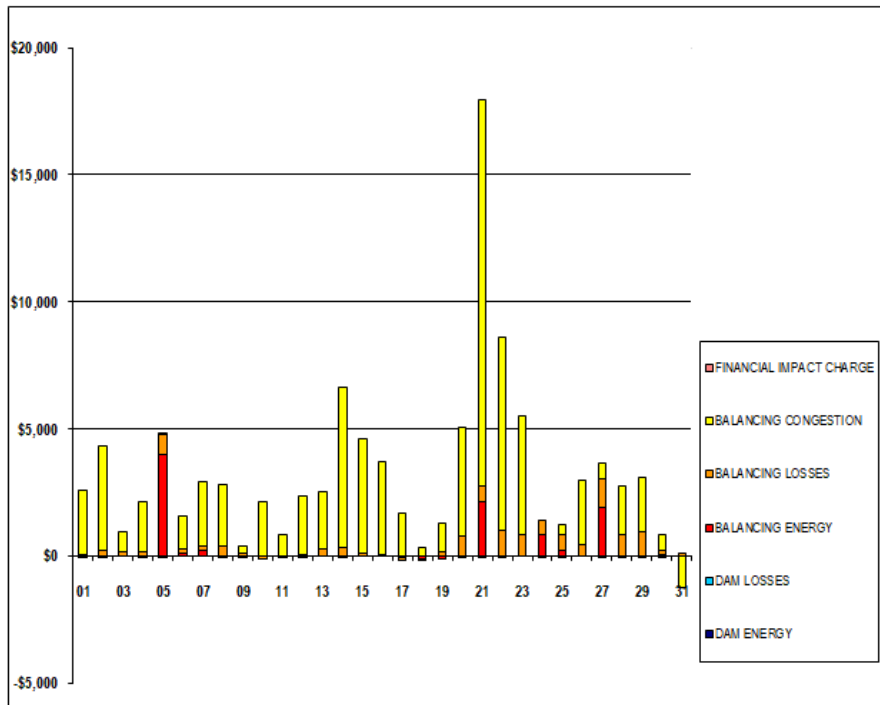
	MONDAY	TUESDAY	WEDNESDAY	THURSDAY	FRIDAY	SATURDAY	SUNDAY
				1	2	3	4
DAM NYCA				0	0	0	0
DAM NON-NYCA				0	0	0	0
DAM WHEELS				0	0	0	0
DAM VIRTUAL				0	0	0	0
BALANCING NYCA				(107)	(1)	(22)	(168)
BALANCING NON-NYCA				0	0	0	0
BALANCING WHEELS				0	0	0	0
BALANCING VIRTUAL				0	0	0	0
UFE/LOSSES				(0)	(0)	(0)	2
	5	6	7	8	9	10	11
DAM NYCA	0	0	0	0	0	0	0
DAM NON-NYCA	0	0	0	0	0	0	0
DAM WHEELS	0	0	0	0	0	0	0
DAM VIRTUAL	0	0	0	0	0	0	0
BALANCING NYCA	(514)	(102)	(341)	(345)	(93)	73	(26)
BALANCING NON-NYCA	0	0	0	0	0	0	0
BALANCING WHEELS	0	0	0	0	0	0	0
BALANCING VIRTUAL	0	0	0	0	0	0	0
UFE/LOSSES	257	(0)	13	0	0	0	0
	12	13	14	15	16	17	18
DAM NYCA	0	0	0	0	0	0	0
DAM NON-NYCA	0	0	0	0	0	0	0
DAM WHEELS	0	0	0	0	0	0	0
DAM VIRTUAL	0	0	0	0	0	0	0
BALANCING NYCA	(22)	(24)	(24)	(23)	(178)	(21)	(22)
BALANCING NON-NYCA	0	0	0	0	0	0	0
BALANCING WHEELS	0	0	0	0	0	0	0
BALANCING VIRTUAL	0	0	0	0	0	0	0
UFE/LOSSES	0	(0)	(0)	0	0	(2)	(5)
	19	20	21	22	23	24	25
DAM NYCA	0	0	0	0	0	0	0
DAM NON-NYCA	0	0	0	0	0	0	0
DAM WHEELS	0	0	0	0	0	0	0
DAM VIRTUAL	0	0	0	0	0	0	0
BALANCING NYCA	6	(3)	(37)	5	(227)	(234)	(228)
BALANCING NON-NYCA	0	0	0	0	0	0	0
BALANCING WHEELS	0	0	0	0	0	0	0
BALANCING VIRTUAL	0	0	0	0	0	0	0
UFE/LOSSES	(4)	(2)	167	(0)	0	40	12
	26	27	28	29	30	31	
DAM NYCA	0	0	0	0	0	0	
DAM NON-NYCA	0	0	0	0	0	0	
DAM WHEELS	0	0	0	0	0	0	
DAM VIRTUAL	0	0	0	0	0	0	
BALANCING NYCA	(44)	(97)	(26)	(100)	31	29	
BALANCING NON-NYCA	0	0	0	0	0	0	
BALANCING WHEELS	0	0	0	0	0	0	
BALANCING VIRTUAL	0	0	0	0	0	0	
UFE/LOSSES	0	74	(0)	0	(0)	29	



SETTLEMENTS REPORT
 March 2018 Settlement Adjustment
 August 7, 2018

Settlement Adjustment – Market Residuals Delta Analysis

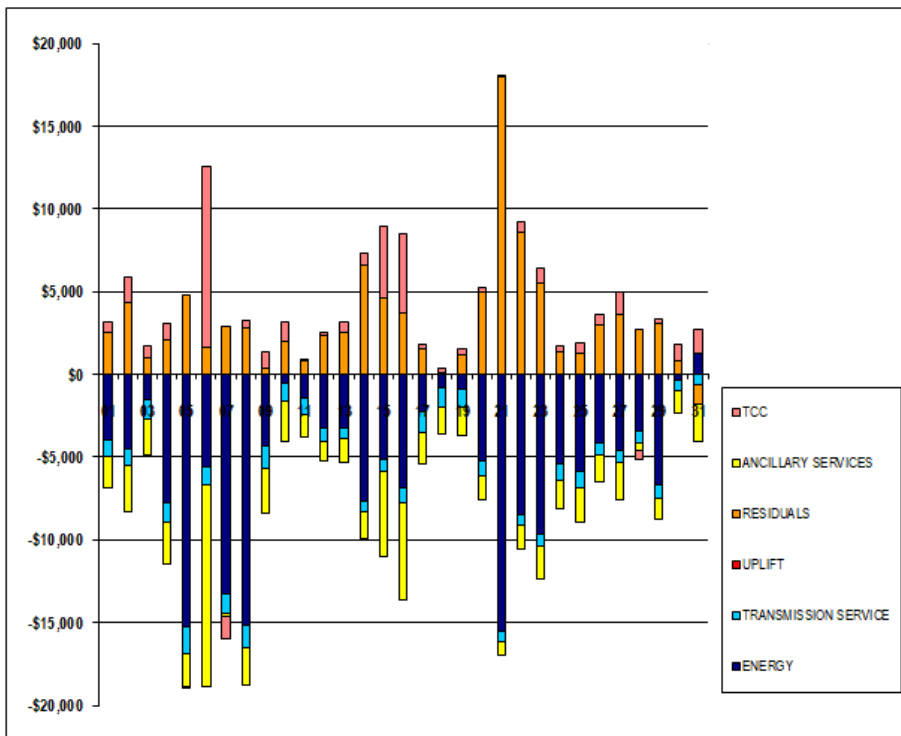
	MONDAY	TUESDAY	WEDNESDAY	THURSDAY	FRIDAY	SATURDAY	SUNDAY
				1	2	3	4
DAM ENERGY				\$0.00	\$0.00	\$0.00	\$0.00
DAM LOSSES				\$0.00	(\$0.01)	\$0.01	\$0.00
BALANCING ENERGY				\$18.04	(\$20.68)	\$3.70	(\$5.28)
BALANCING LOSSES				(\$20.91)	\$182.69	\$140.16	\$170.36
BALANCING CONGESTION				\$2,531.60	\$4,135.97	\$821.86	\$1,928.13
FINANCIAL IMPACT CHARGE				\$0.00	\$0.00	\$0.00	(\$0.04)
	5	6	7	8	9	10	11
DAM ENERGY	(\$0.01)	\$0.00	\$0.00	\$0.00	\$0.01	(\$0.01)	\$0.00
DAM LOSSES	\$0.00	\$0.00	\$0.00	\$0.00	\$0.01	\$0.00	\$0.00
BALANCING ENERGY	\$4,007.07	\$111.34	\$181.45	(\$26.09)	(\$20.49)	(\$4.17)	(\$3.07)
BALANCING LOSSES	\$745.69	\$136.52	\$209.10	\$371.78	\$110.40	(\$128.16)	(\$58.18)
BALANCING CONGESTION	\$1.23	\$1,338.84	\$2,497.65	\$2,408.05	\$291.21	\$2,146.43	\$846.63
FINANCIAL IMPACT CHARGE	\$0.00	\$0.00	\$0.00	\$0.00	\$0.00	\$0.00	\$0.00
	12	13	14	15	16	17	18
DAM ENERGY	\$0.00	\$0.01	\$0.01	\$0.00	\$0.00	\$0.00	\$0.00
DAM LOSSES	(\$0.01)	\$0.00	\$0.00	\$0.01	\$0.01	\$0.00	\$0.01
BALANCING ENERGY	(\$23.15)	\$4.12	(\$25.97)	\$1.89	\$16.37	(\$69.65)	(\$103.63)
BALANCING LOSSES	\$26.73	\$277.66	\$296.63	\$67.85	\$1.90	(\$88.16)	(\$86.54)
BALANCING CONGESTION	\$2,343.11	\$2,218.17	\$6,313.94	\$4,533.94	\$3,667.66	\$1,659.58	\$317.23
FINANCIAL IMPACT CHARGE	\$0.00	\$0.00	\$0.00	\$0.00	\$0.00	\$0.00	\$0.00
	19	20	21	22	23	24	25
DAM ENERGY	\$0.00	(\$0.01)	\$0.00	\$0.00	\$0.00	\$0.01	(\$0.01)
DAM LOSSES	\$0.00	\$0.00	(\$0.01)	\$0.00	\$0.00	\$0.00	\$0.00
BALANCING ENERGY	(\$120.08)	(\$78.30)	\$2,127.37	(\$16.82)	\$0.17	\$845.42	\$236.01
BALANCING LOSSES	\$146.12	\$785.73	\$613.92	\$1,023.88	\$834.45	\$560.06	\$567.53
BALANCING CONGESTION	\$1,125.70	\$4,242.50	\$15,185.15	\$7,573.44	\$4,652.45	(\$57.33)	\$424.04
FINANCIAL IMPACT CHARGE	\$0.00	\$0.00	\$0.00	\$0.00	\$0.00	\$0.00	\$0.00
	26	27	28	29	30	31	
DAM ENERGY	\$0.00	(\$0.01)	(\$0.01)	\$0.00	\$0.00	\$0.01	
DAM LOSSES	\$0.00	\$0.00	\$0.00	\$0.00	(\$0.01)	\$0.01	
BALANCING ENERGY	\$4.26	\$1,918.19	(\$4.89)	(\$5.64)	\$13.26	(\$13.83)	
BALANCING LOSSES	\$444.73	\$1,088.31	\$808.21	\$940.10	\$214.22	\$118.68	
BALANCING CONGESTION	\$2,535.49	\$644.84	\$1,911.70	\$2,166.24	\$627.60	(\$1,245.61)	
FINANCIAL IMPACT CHARGE	\$0.00	\$0.00	\$0.00	\$0.00	\$0.00	\$0.00	



SETTLEMENTS REPORT
 March 2018 Settlement Adjustment
 August 7, 2018

Settlement Adjustment – Market Costs Delta Analysis

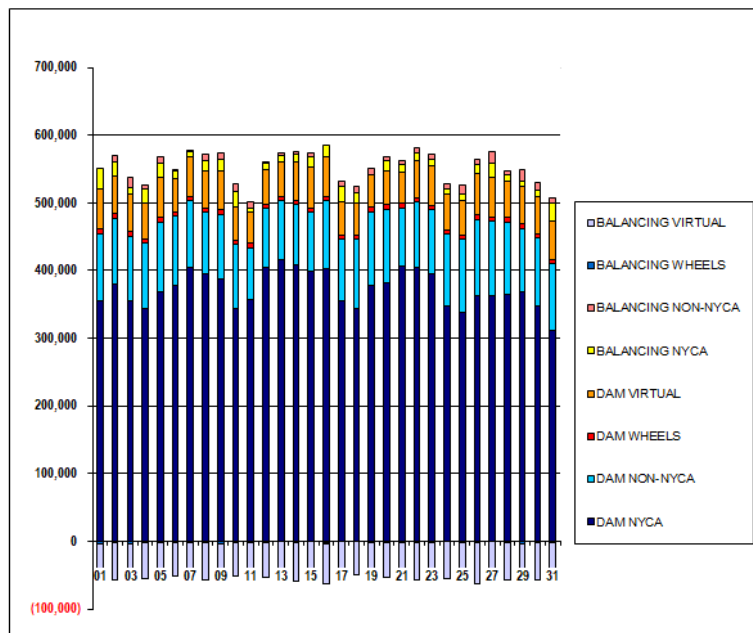
	MONDAY	TUESDAY	WEDNESDAY	THURSDAY	FRIDAY	SATURDAY	SUNDAY
ENERGY				1	2	3	4
TRANSMISSION SERVICE				(\$3,934.73)	(\$4,499.12)	(\$1,568.42)	(\$7,738.67)
UPLIFT				(\$1,044.70)	(\$978.86)	(\$1,117.91)	(\$1,215.77)
RESIDUALS				\$0.00	\$0.00	(\$0.01)	(\$0.01)
ANCILLARY SERVICES				\$2,528.73	\$4,297.97	\$965.73	\$2,093.17
TCC				(\$1,916.90)	(\$2,790.54)	(\$2,176.94)	(\$2,513.93)
				\$592.05	\$1,576.74	\$784.92	\$960.09
	5	6	7	8	9	10	11
ENERGY	(\$15,285.54)	(\$5,606.78)	(\$13,293.77)	(\$15,173.26)	(\$4,311.65)	(\$501.12)	(\$1,480.59)
TRANSMISSION SERVICE	(\$1,613.46)	(\$1,040.68)	(\$1,162.70)	(\$1,335.70)	(\$1,393.41)	(\$1,090.02)	(\$987.89)
UPLIFT	\$0.01	\$8.59	\$13.27	\$7.09	\$0.00	(\$0.10)	(\$0.01)
RESIDUALS	\$4,753.98	\$1,586.70	\$2,888.20	\$2,753.74	\$381.14	\$2,014.09	\$785.38
ANCILLARY SERVICES	(\$2,014.05)	(\$12,232.56)	(\$169.20)	(\$2,262.01)	(\$2,694.54)	(\$2,510.26)	(\$1,321.42)
TCC	(\$58.14)	\$10,914.15	(\$1,366.53)	\$510.45	\$941.28	\$1,179.00	\$89.34
	12	13	14	15	16	17	18
ENERGY	(\$3,248.53)	(\$3,278.17)	(\$7,644.65)	(\$5,159.12)	(\$6,871.72)	(\$2,229.49)	(\$810.62)
TRANSMISSION SERVICE	(\$784.01)	(\$618.25)	(\$699.06)	(\$690.72)	(\$856.71)	(\$1,263.66)	(\$1,150.88)
UPLIFT	\$1.84	\$0.01	\$0.00	(\$0.02)	(\$0.01)	\$0.26	(\$0.01)
RESIDUALS	\$2,346.68	\$2,499.96	\$6,584.61	\$4,603.69	\$3,685.94	\$1,501.77	\$127.07
ANCILLARY SERVICES	(\$1,193.80)	(\$1,468.44)	(\$1,626.51)	(\$5,155.30)	(\$5,913.93)	(\$1,910.22)	(\$1,623.38)
TCC	\$215.58	\$695.34	\$753.12	\$4,292.61	\$4,802.67	\$337.83	\$190.47
	19	20	21	22	23	24	25
ENERGY	(\$943.57)	(\$5,216.01)	(\$15,499.52)	(\$8,498.65)	(\$9,669.50)	(\$5,419.76)	(\$5,879.27)
TRANSMISSION SERVICE	(\$1,046.58)	(\$924.51)	(\$623.43)	(\$642.84)	(\$744.00)	(\$1,012.98)	(\$1,019.49)
UPLIFT	\$0.54	\$17.18	(\$2.43)	\$0.00	\$0.00	\$0.00	\$0.00
RESIDUALS	\$1,151.74	\$4,949.92	\$17,926.43	\$8,580.50	\$5,487.07	\$1,348.16	\$1,227.57
ANCILLARY SERVICES	(\$1,698.17)	(\$1,454.67)	(\$861.37)	(\$1,461.34)	(\$1,940.98)	(\$1,686.15)	(\$2,012.58)
TCC	\$402.33	\$307.68	\$48.69	\$665.79	\$955.71	\$365.49	\$689.43
	26	27	28	29	30	31	
ENERGY	(\$4,144.27)	(\$4,592.47)	(\$3,423.47)	(\$6,645.15)	(\$318.77)	\$1,301.92	
TRANSMISSION SERVICE	(\$767.08)	(\$739.35)	(\$759.12)	(\$806.58)	(\$670.65)	(\$668.72)	
UPLIFT	\$0.01	\$0.01	\$0.01	(\$0.01)	\$0.01	\$0.01	
RESIDUALS	\$2,984.48	\$3,651.33	\$2,715.01	\$3,100.70	\$855.07	(\$1,140.74)	
ANCILLARY SERVICES	(\$1,604.10)	(\$2,220.96)	(\$432.49)	(\$1,275.59)	(\$1,395.46)	(\$2,238.43)	
TCC	\$640.98	\$1,297.98	(\$529.77)	\$247.83	\$929.88	\$1,417.41	



SETTLEMENTS REPORT
 March 2018 Settlement Adjustment
 August 7, 2018

Initial Settlement – Market Supply Analysis

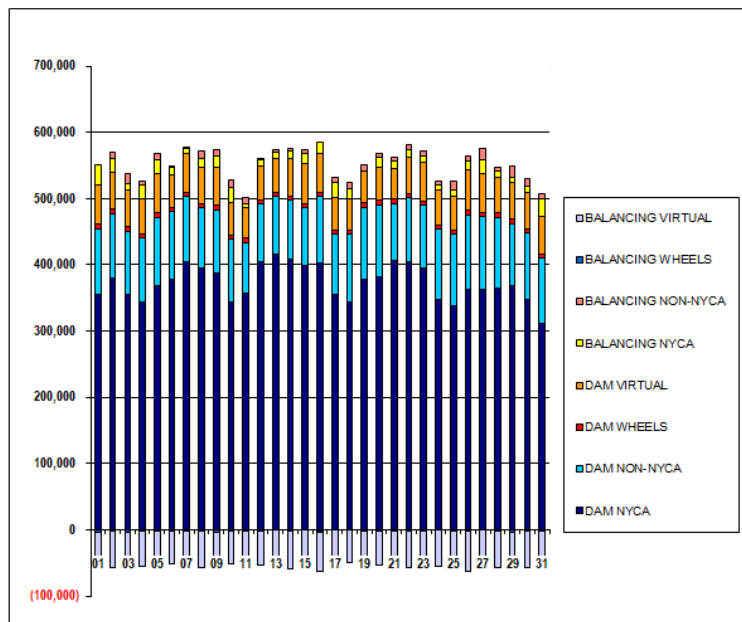
	MONDAY	TUESDAY	WEDNESDAY	THURSDAY	FRIDAY	SATURDAY	SUNDAY
				1	2	3	4
DAM NYCA				355,003	379,073	354,717	343,495
DAM NON-NYCA				99,704	98,547	95,466	96,347
DAM WHEELS				6,918	7,352	8,330	7,089
DAM VIRTUAL				59,668	54,406	53,474	52,283
BALANCING NYCA				29,289	21,147	10,071	20,458
BALANCING NON-NYCA				(999)	8,580	14,709	7,051
BALANCING WHEELS				(2,157)	(2,816)	(3,299)	(2,553)
BALANCING VIRTUAL				(59,668)	(54,406)	(53,474)	(52,283)
	5	6	7	8	9	10	11
DAM NYCA	368,696	377,275	403,624	395,373	387,505	344,570	356,118
DAM NON-NYCA	102,994	103,094	98,945	90,674	94,114	93,909	77,820
DAM WHEELS	6,740	6,721	6,722	6,442	7,658	6,495	7,176
DAM VIRTUAL	58,705	49,023	59,487	54,824	57,557	49,110	44,853
BALANCING NYCA	21,876	11,635	6,725	14,152	17,271	23,358	6,476
BALANCING NON-NYCA	8,485	1,343	2,393	9,930	9,336	9,812	8,233
BALANCING WHEELS	(1,904)	(2,185)	(2,186)	(1,906)	(3,122)	(1,959)	(2,829)
BALANCING VIRTUAL	(58,705)	(49,023)	(59,487)	(54,824)	(57,557)	(49,110)	(44,853)
	12	13	14	15	16	17	18
DAM NYCA	405,090	415,812	408,857	399,033	403,342	354,933	344,594
DAM NON-NYCA	86,058	87,713	88,125	87,301	100,054	90,697	101,293
DAM WHEELS	6,723	5,497	5,895	5,612	6,358	5,517	5,627
DAM VIRTUAL	51,646	52,117	56,916	60,082	58,794	49,413	48,905
BALANCING NYCA	8,424	8,283	12,894	16,607	16,291	23,156	14,601
BALANCING NON-NYCA	2,120	3,782	3,342	4,728	(1,757)	8,293	9,925
BALANCING WHEELS	(2,187)	(961)	(1,359)	(1,076)	(1,822)	(981)	(1,091)
BALANCING VIRTUAL	(51,646)	(52,117)	(56,916)	(60,082)	(58,794)	(49,413)	(48,905)
	19	20	21	22	23	24	25
DAM NYCA	377,423	382,571	405,553	404,362	394,956	346,795	337,408
DAM NON-NYCA	109,654	107,449	86,648	96,870	95,156	106,934	109,332
DAM WHEELS	5,831	6,677	6,637	5,946	6,388	5,564	5,888
DAM VIRTUAL	48,573	51,020	45,631	55,987	57,613	53,700	50,636
BALANCING NYCA	(20)	14,681	11,487	10,969	9,910	8,113	10,459
BALANCING NON-NYCA	8,968	4,717	6,519	7,454	7,394	6,008	12,224
BALANCING WHEELS	(1,195)	(1,837)	(2,101)	(1,310)	(1,582)	(1,028)	(1,352)
BALANCING VIRTUAL	(48,573)	(51,020)	(45,631)	(55,987)	(57,613)	(53,700)	(50,636)
	26	27	28	29	30	31	
DAM NYCA	362,258	363,142	365,267	369,193	346,698	310,582	
DAM NON-NYCA	113,445	109,966	105,224	92,783	101,031	99,763	
DAM WHEELS	6,615	5,986	7,989	7,677	6,909	5,937	
DAM VIRTUAL	60,737	58,623	53,375	55,456	54,491	56,394	
BALANCING NYCA	14,202	21,496	8,715	6,063	9,001	27,665	
BALANCING NON-NYCA	6,985	15,867	5,820	17,151	12,327	6,693	
BALANCING WHEELS	(2,029)	(1,142)	(2,943)	(3,140)	(2,315)	(1,401)	
BALANCING VIRTUAL	(60,737)	(58,623)	(53,375)	(55,456)	(54,491)	(56,394)	



SETTLEMENTS REPORT
 March 2018 Settlement Adjustment
 August 7, 2018

4-Month Settlement Adjustment – Market Supply Analysis

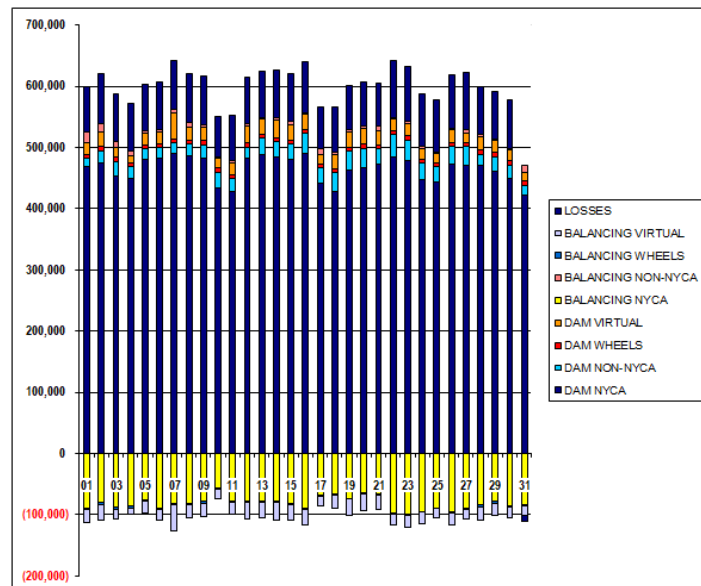
	MONDAY	TUESDAY	WEDNESDAY	THURSDAY	FRIDAY	SATURDAY	SUNDAY
				1	2	3	4
DAM NYCA				355,003	379,073	354,717	343,495
DAM NON-NYCA				99,704	98,547	95,466	96,347
DAM WHEELS				6,918	7,352	8,330	7,089
DAM VIRTUAL				59,668	54,406	53,474	52,283
BALANCING NYCA				29,182	21,146	10,049	20,292
BALANCING NON-NYCA				(999)	8,580	14,709	7,051
BALANCING WHEELS				(2,157)	(2,816)	(3,299)	(2,553)
BALANCING VIRTUAL				(59,668)	(54,406)	(53,474)	(52,283)
	5	6	7	8	9	10	11
DAM NYCA	368,696	377,275	403,624	395,373	387,505	344,570	356,118
DAM NON-NYCA	102,994	103,094	98,945	90,674	94,114	93,909	77,820
DAM WHEELS	6,740	6,721	6,722	6,442	7,658	6,495	7,176
DAM VIRTUAL	58,705	49,023	59,487	54,824	57,557	49,110	44,853
BALANCING NYCA	21,619	11,533	6,397	13,806	17,178	23,431	6,449
BALANCING NON-NYCA	8,485	1,343	2,393	9,930	9,336	9,812	8,233
BALANCING WHEELS	(1,904)	(2,185)	(2,188)	(1,906)	(3,122)	(1,959)	(2,829)
BALANCING VIRTUAL	(58,705)	(49,023)	(59,487)	(54,824)	(57,557)	(49,110)	(44,853)
	12	13	14	15	16	17	18
DAM NYCA	405,090	415,812	408,857	399,033	403,342	354,933	344,594
DAM NON-NYCA	86,058	87,713	88,125	87,301	100,054	90,697	101,293
DAM WHEELS	6,723	5,497	5,895	5,612	6,358	5,517	5,627
DAM VIRTUAL	51,646	52,117	56,916	60,082	58,794	49,413	48,905
BALANCING NYCA	8,401	8,259	12,670	16,584	16,114	23,134	14,574
BALANCING NON-NYCA	2,120	3,782	3,342	4,728	(1,757)	8,293	9,925
BALANCING WHEELS	(2,187)	(951)	(1,359)	(1,076)	(1,822)	(981)	(1,091)
BALANCING VIRTUAL	(51,646)	(52,117)	(56,916)	(60,082)	(58,794)	(49,413)	(48,905)
	19	20	21	22	23	24	25
DAM NYCA	377,423	382,571	405,553	404,362	394,956	346,795	337,408
DAM NON-NYCA	109,654	107,449	86,648	96,870	95,156	106,934	109,332
DAM WHEELS	5,831	6,677	6,637	5,946	6,388	5,564	5,888
DAM VIRTUAL	48,573	51,020	45,631	55,987	57,613	53,700	50,636
BALANCING NYCA	(18)	14,676	11,618	10,974	9,683	7,918	10,242
BALANCING NON-NYCA	8,968	4,717	6,519	7,454	7,394	6,008	12,224
BALANCING WHEELS	(1,195)	(1,837)	(2,101)	(1,310)	(1,582)	(1,028)	(1,352)
BALANCING VIRTUAL	(48,573)	(51,020)	(45,631)	(55,987)	(57,613)	(53,700)	(50,636)
	26	27	28	29	30	31	
DAM NYCA	362,258	363,142	365,267	369,193	346,698	310,582	
DAM NON-NYCA	113,445	109,966	105,224	92,783	101,031	99,763	
DAM WHEELS	6,615	5,986	7,989	7,677	6,909	5,937	
DAM VIRTUAL	60,737	58,623	53,375	55,456	54,491	56,394	
BALANCING NYCA	14,158	21,473	8,689	5,962	9,031	27,694	
BALANCING NON-NYCA	6,985	15,887	5,820	17,151	12,327	6,693	
BALANCING WHEELS	(2,029)	(1,142)	(2,943)	(3,140)	(2,315)	(1,401)	
BALANCING VIRTUAL	(60,737)	(58,623)	(53,375)	(55,456)	(54,491)	(56,394)	



SETTLEMENTS REPORT
 March 2018 Settlement Adjustment
 August 7, 2018

Initial Settlement – Market Withdrawals Analysis

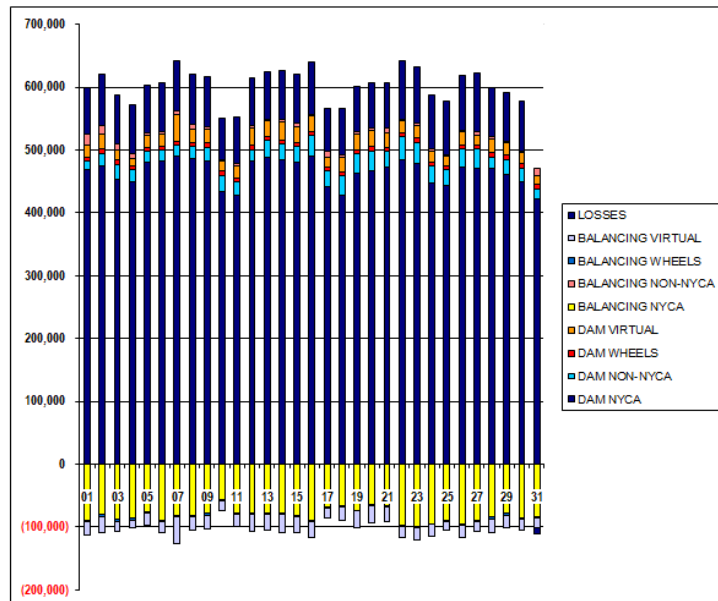
	MONDAY	TUESDAY	WEDNESDAY	THURSDAY	FRIDAY	SATURDAY	SUNDAY
				1	2	3	4
DAM NYCA				469,433	474,013	453,757	449,000
DAM NON-NYCA				12,125	19,857	22,289	19,483
DAM WHEELS				6,918	7,352	8,330	7,089
DAM VIRTUAL				19,727	24,825	15,459	11,552
BALANCING NYCA				(89,988)	(80,631)	(87,891)	(85,987)
BALANCING NON-NYCA				17,829	13,416	10,018	7,318
BALANCING WHEELS				(2,157)	(2,816)	(3,299)	(2,553)
BALANCING VIRTUAL				(19,727)	(24,825)	(15,459)	(11,552)
UFE/LOSSES				73,589	80,690	76,790	77,537
	5	6	7	8	9	10	11
DAM NYCA	481,018	482,007	489,664	486,031	483,252	433,897	428,491
DAM NON-NYCA	16,492	17,189	17,644	18,823	19,946	25,786	19,943
DAM WHEELS	6,740	6,721	6,722	6,442	7,658	6,495	7,176
DAM VIRTUAL	18,737	18,642	42,305	22,464	21,655	16,063	18,638
BALANCING NYCA	(75,885)	(89,824)	(81,204)	(81,020)	(78,175)	(55,514)	(77,363)
BALANCING NON-NYCA	4,334	5,287	6,636	7,370	4,946	2,962	4,765
BALANCING WHEELS	(1,904)	(2,185)	(2,186)	(1,906)	(3,122)	(1,959)	(2,829)
BALANCING VIRTUAL	(18,737)	(18,642)	(42,305)	(22,464)	(21,655)	(16,063)	(18,638)
UFE/LOSSES	76,093	77,688	78,947	78,924	78,257	64,518	72,811
	12	13	14	15	16	17	18
DAM NYCA	481,622	489,160	483,463	480,271	489,784	441,971	427,475
DAM NON-NYCA	18,631	25,793	25,821	25,746	32,916	24,926	32,066
DAM WHEELS	6,723	5,497	5,895	5,612	6,358	5,517	5,627
DAM VIRTUAL	27,095	25,487	29,645	25,801	25,267	16,022	22,674
BALANCING NYCA	(78,378)	(78,163)	(77,618)	(81,744)	(89,791)	(68,274)	(66,474)
BALANCING NON-NYCA	4,080	2,136	4,579	4,593	1,629	8,712	5,274
BALANCING WHEELS	(2,187)	(961)	(1,359)	(1,076)	(1,822)	(981)	(1,091)
BALANCING VIRTUAL	(27,095)	(25,487)	(29,645)	(25,801)	(25,267)	(16,022)	(22,674)
UFE/LOSSES	75,736	76,663	76,773	78,804	83,383	68,744	72,072
	19	20	21	22	23	24	25
DAM NYCA	463,139	467,645	472,460	484,166	478,623	447,315	442,600
DAM NON-NYCA	31,207	30,745	24,913	37,837	33,455	27,182	26,965
DAM WHEELS	5,831	6,677	6,637	5,946	6,388	5,964	5,888
DAM VIRTUAL	25,596	26,483	23,902	18,568	19,780	18,527	13,888
BALANCING NYCA	(73,493)	(65,094)	(65,201)	(97,773)	(98,945)	(94,904)	(88,929)
BALANCING NON-NYCA	3,193	3,289	7,432	2,836	4,455	2,979	2,223
BALANCING WHEELS	(1,195)	(1,837)	(2,101)	(1,310)	(1,582)	(1,028)	(1,352)
BALANCING VIRTUAL	(25,596)	(26,483)	(23,902)	(18,568)	(19,780)	(18,527)	(13,888)
UFE/LOSSES	71,978	72,833	70,603	92,588	89,828	85,277	86,564
	26	27	28	29	30	31	
DAM NYCA	472,673	470,953	470,639	460,207	449,269	422,909	
DAM NON-NYCA	29,141	31,407	17,744	23,487	22,423	15,775	
DAM WHEELS	6,615	5,986	7,989	7,677	6,909	5,937	
DAM VIRTUAL	20,318	15,250	21,433	19,617	17,055	15,255	
BALANCING NYCA	(94,432)	(90,268)	(84,101)	(78,034)	(85,685)	(83,816)	
BALANCING NON-NYCA	1,959	6,140	3,368	3,081	2,819	10,521	
BALANCING WHEELS	(2,029)	(1,142)	(2,943)	(3,140)	(2,315)	(1,401)	
BALANCING VIRTUAL	(20,318)	(15,250)	(21,433)	(19,617)	(17,055)	(15,255)	
UFE/LOSSES	87,549	92,258	77,376	76,448	80,231	(10,208)	



SETTLEMENTS REPORT
 March 2018 Settlement Adjustment
 August 7, 2018

4-Month Settlement Adjustment – Market Withdrawals Analysis

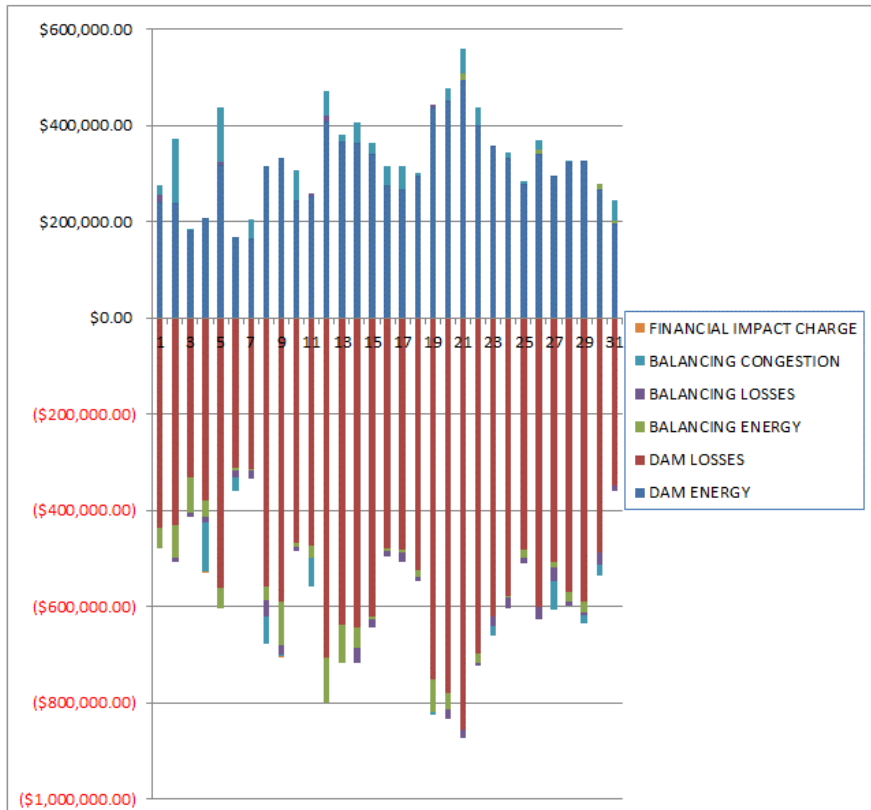
	MONDAY	TUESDAY	WEDNESDAY	THURSDAY	FRIDAY	SATURDAY	SUNDAY
				1	2	3	4
DAM NYCA				469,433	474,013	453,757	449,000
DAM NON-NYCA				12,125	19,857	22,289	19,483
DAM WHEELS				6,918	7,352	8,330	7,089
DAM VIRTUAL				19,727	24,825	15,459	11,552
BALANCING NYCA				(90,096)	(80,631)	(87,913)	(86,155)
BALANCING NON-NYCA				17,829	13,416	10,018	7,318
BALANCING WHEELS				(2,157)	(2,816)	(3,299)	(2,553)
BALANCING VIRTUAL				(19,727)	(24,825)	(15,459)	(11,552)
UFELOSSES				73,599	80,690	76,790	77,539
	5	6	7	8	9	10	11
DAM NYCA	481,018	482,007	489,664	486,031	483,252	433,897	428,491
DAM NON-NYCA	16,492	17,189	17,644	18,823	19,946	25,786	19,943
DAM WHEELS	6,740	6,721	6,722	6,442	7,658	6,495	7,176
DAM VIRTUAL	18,737	18,642	42,305	22,464	21,655	16,063	18,638
BALANCING NYCA	(76,399)	(88,926)	(81,545)	(81,366)	(78,268)	(55,441)	(77,389)
BALANCING NON-NYCA	4,334	5,287	6,636	7,370	4,946	2,952	4,765
BALANCING WHEELS	(1,904)	(2,185)	(2,186)	(1,906)	(3,122)	(1,959)	(2,829)
BALANCING VIRTUAL	(18,737)	(18,642)	(42,305)	(22,464)	(21,655)	(16,063)	(18,638)
UFELOSSES	76,350	77,688	78,980	78,925	78,257	64,516	72,811
	12	13	14	15	16	17	18
DAM NYCA	481,622	489,160	483,463	480,271	489,784	441,971	427,475
DAM NON-NYCA	18,631	25,793	25,821	25,746	32,916	24,826	32,066
DAM WHEELS	6,723	5,497	5,895	5,612	6,358	5,517	5,627
DAM VIRTUAL	27,095	25,487	29,645	25,801	25,267	16,022	22,674
BALANCING NYCA	(78,400)	(78,187)	(77,642)	(81,767)	(89,969)	(68,295)	(66,495)
BALANCING NON-NYCA	4,080	2,136	4,579	4,593	1,629	8,712	5,274
BALANCING WHEELS	(2,187)	(961)	(1,359)	(1,076)	(1,822)	(981)	(1,091)
BALANCING VIRTUAL	(27,095)	(25,487)	(29,645)	(25,801)	(25,267)	(16,022)	(22,674)
UFELOSSES	75,736	76,663	76,773	78,804	83,393	69,742	72,067
	19	20	21	22	23	24	25
DAM NYCA	483,139	467,645	472,460	484,166	478,623	447,315	442,600
DAM NON-NYCA	31,207	30,745	24,913	37,837	33,455	27,182	26,965
DAM WHEELS	5,831	6,677	6,637	5,946	6,388	5,564	5,888
DAM VIRTUAL	25,596	26,483	23,902	18,568	19,780	18,527	13,888
BALANCING NYCA	(73,487)	(65,097)	(65,238)	(97,767)	(99,172)	(95,138)	(89,158)
BALANCING NON-NYCA	3,193	3,289	7,432	2,836	4,455	2,979	2,223
BALANCING WHEELS	(1,195)	(1,837)	(2,101)	(1,310)	(1,582)	(1,028)	(1,352)
BALANCING VIRTUAL	(25,596)	(26,483)	(23,902)	(18,568)	(19,780)	(18,527)	(13,888)
UFELOSSES	71,974	72,831	70,770	92,568	89,628	85,317	86,576
	26	27	28	29	30	31	
DAM NYCA	472,673	470,953	470,639	460,207	449,269	422,909	
DAM NON-NYCA	29,141	31,407	17,744	23,487	22,423	15,775	
DAM WHEELS	6,615	5,986	7,989	7,677	6,909	5,937	
DAM VIRTUAL	20,318	15,250	21,433	19,617	17,055	15,255	
BALANCING NYCA	(94,476)	(90,365)	(84,127)	(78,134)	(85,655)	(83,787)	
BALANCING NON-NYCA	1,959	6,140	3,368	3,081	2,819	10,521	
BALANCING WHEELS	(2,029)	(1,142)	(2,943)	(3,140)	(2,315)	(1,401)	
BALANCING VIRTUAL	(20,318)	(15,250)	(21,433)	(19,617)	(17,055)	(15,255)	
UFELOSSES	87,549	92,332	77,376	76,448	80,231	(10,179)	



SETTLEMENTS REPORT
 March 2018 Settlement Adjustment
 August 7, 2018

Initial Settlement – Market Residuals Analysis

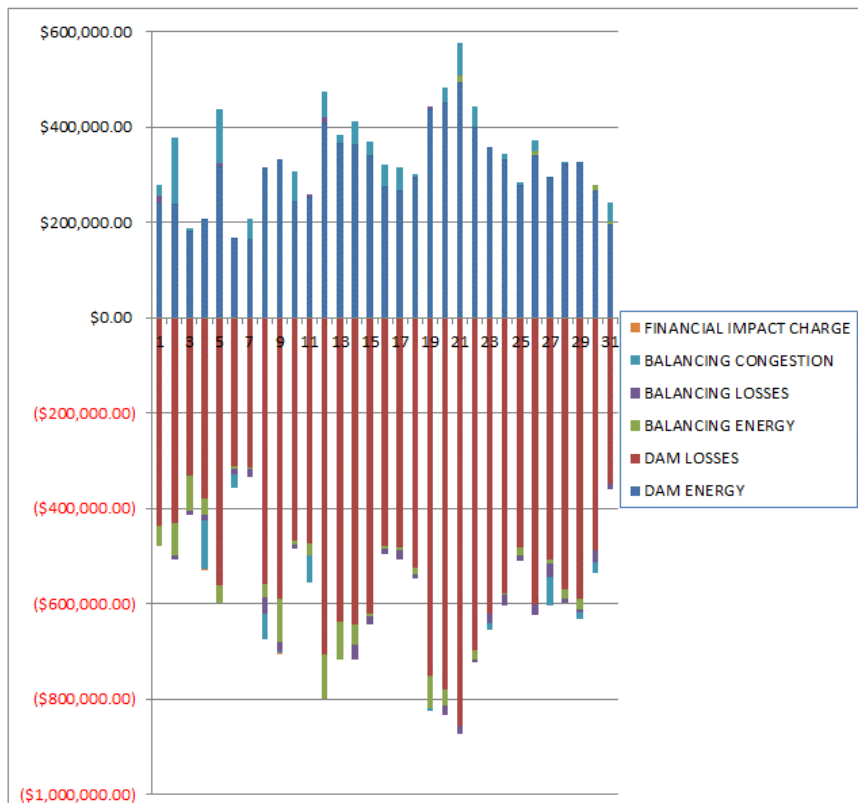
	MONDAY	TUESDAY	WEDNESDAY	THURSDAY	FRIDAY	SATURDAY	SUNDAY
				1	2	3	4
DAM ENERGY				\$240,911.50	\$238,199.15	\$182,511.48	\$208,294.30
DAM LOSSES				(\$436,256.40)	(\$431,040.54)	(\$332,602.56)	(\$380,619.70)
BALANCING ENERGY				(\$41,762.66)	(\$66,486.88)	(\$71,658.37)	(\$34,042.00)
BALANCING LOSSES				\$15,347.65	(\$9,721.72)	(\$10,325.14)	(\$9,669.77)
BALANCING CONGESTION				\$18,752.50	\$133,693.38	\$2,848.24	(\$103,395.46)
FINANCIAL IMPACT CHARGE				\$0.00	\$0.00	\$0.00	(\$30.29)
	5	6	7	8	9	10	11
DAM ENERGY	\$317,022.40	\$167,812.17	\$165,960.97	\$314,497.98	\$331,383.51	\$244,105.41	\$252,318.48
DAM LOSSES	(\$561,676.86)	(\$312,238.32)	(\$313,553.42)	(\$558,932.38)	(\$590,066.40)	(\$467,508.13)	(\$471,693.01)
BALANCING ENERGY	(\$41,464.66)	(\$4,642.71)	(\$4,205.64)	(\$28,757.32)	(\$89,299.10)	(\$8,900.20)	(\$26,743.29)
BALANCING LOSSES	\$5,192.53	(\$13,267.53)	(\$16,780.55)	(\$31,771.29)	(\$21,050.33)	(\$7,659.33)	\$5,658.71
BALANCING CONGESTION	\$114,488.60	(\$28,592.91)	\$39,380.69	(\$50,052.94)	(\$3,595.86)	\$61,211.07	(\$58,887.67)
FINANCIAL IMPACT CHARGE	\$0.00	\$0.00	\$0.00	\$0.00	(\$8.25)	\$0.00	\$0.00
	12	13	14	15	16	17	18
DAM ENERGY	\$407,453.54	\$365,158.76	\$361,896.60	\$339,126.12	\$274,019.40	\$267,714.47	\$294,180.75
DAM LOSSES	(\$706,699.63)	(\$637,786.14)	(\$643,060.51)	(\$619,975.04)	(\$480,044.56)	(\$482,128.22)	(\$524,678.45)
BALANCING ENERGY	(\$91,074.73)	(\$78,016.58)	(\$41,601.37)	(\$6,638.79)	(\$3,452.37)	(\$5,268.59)	(\$13,194.87)
BALANCING LOSSES	\$11,288.85	\$524.68	(\$32,028.68)	(\$16,623.70)	(\$12,021.15)	(\$20,905.88)	(\$9,840.07)
BALANCING CONGESTION	\$51,436.12	\$14,849.17	\$43,817.52	\$24,595.91	\$42,212.63	\$46,939.47	\$5,263.78
FINANCIAL IMPACT CHARGE	\$0.00	\$0.00	\$0.00	\$0.00	\$0.00	\$0.00	\$0.00
	19	20	21	22	23	24	25
DAM ENERGY	\$437,537.99	\$452,287.28	\$493,495.85	\$399,722.54	\$358,034.83	\$332,741.37	\$277,206.98
DAM LOSSES	(\$750,561.07)	(\$780,130.55)	(\$855,764.53)	(\$697,272.66)	(\$621,403.54)	(\$577,422.86)	(\$482,929.47)
BALANCING ENERGY	(\$69,234.40)	(\$33,032.50)	\$13,248.46	(\$19,854.71)	(\$494.40)	(\$4,787.05)	(\$16,684.45)
BALANCING LOSSES	\$5,205.18	(\$21,110.15)	(\$18,077.16)	(\$6,689.12)	(\$18,968.21)	(\$21,387.48)	(\$10,954.81)
BALANCING CONGESTION	(\$6,084.98)	\$24,868.12	\$51,019.71	\$35,909.13	(\$18,226.54)	\$10,242.03	\$7,553.55
FINANCIAL IMPACT CHARGE	\$0.00	\$0.00	\$0.00	\$0.00	\$0.00	\$0.00	\$0.00
	26	27	28	29	30	31	
DAM ENERGY	\$339,847.29	\$294,042.88	\$324,752.75	\$327,715.52	\$266,972.34	\$332,741.37	\$195,536.35
DAM LOSSES	(\$601,330.52)	(\$507,592.49)	(\$569,973.69)	(\$588,539.20)	(\$487,257.58)	(\$348,963.47)	
BALANCING ENERGY	\$10,191.08	(\$11,325.68)	(\$19,828.36)	(\$22,618.96)	\$11,151.76	\$6,701.02	
BALANCING LOSSES	(\$23,584.42)	(\$28,140.92)	(\$7,664.21)	(\$7,105.77)	(\$25,327.90)	(\$11,133.12)	
BALANCING CONGESTION	\$17,828.79	(\$59,437.24)	\$850.05	(\$16,336.08)	(\$24,056.29)	\$40,484.21	
FINANCIAL IMPACT CHARGE	\$0.00	\$0.00	\$0.00	\$0.00	\$0.00	\$0.00	



SETTLEMENTS REPORT
 March 2018 Settlement Adjustment
 August 7, 2018

4-Month Settlement Adjustment – Market Residuals Analysis

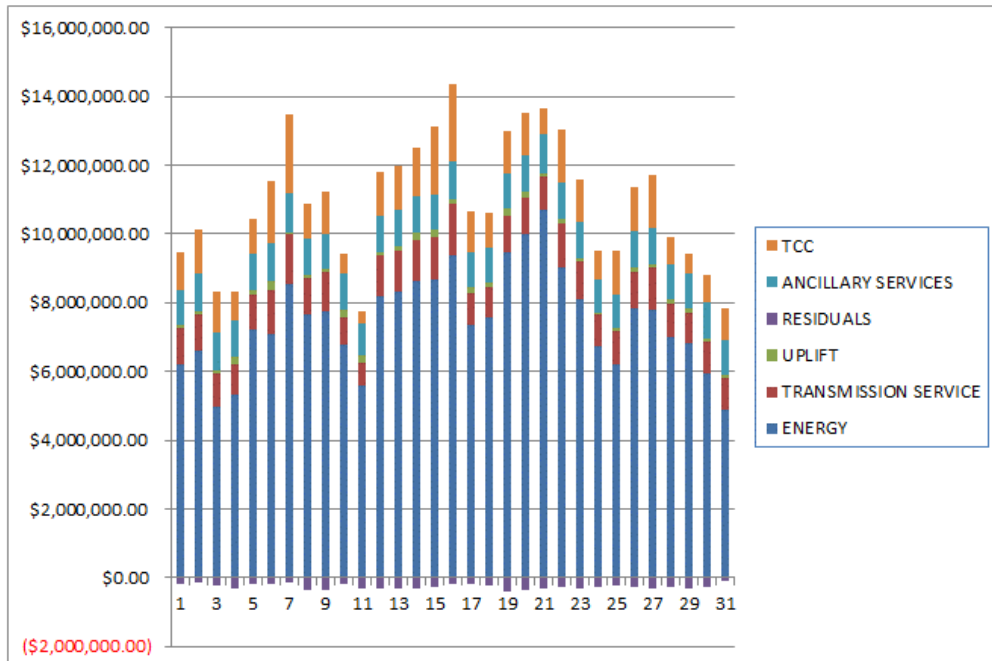
	MONDAY	TUESDAY	WEDNESDAY	THURSDAY	FRIDAY	SATURDAY	SUNDAY
				1	2	3	4
DAM ENERGY				\$240,911.50	\$238,199.15	\$182,511.48	\$208,294.30
DAM LOSSES				(\$436,256.40)	(\$431,040.55)	(\$332,602.55)	(\$380,619.70)
BALANCING ENERGY				(\$41,744.62)	(\$66,507.56)	(\$71,654.67)	(\$34,047.28)
BALANCING LOSSES				\$15,326.74	(\$9,539.03)	(\$10,184.98)	(\$9,499.41)
BALANCING CONGESTION				\$21,284.10	\$137,829.35	\$3,670.10	(\$101,467.33)
FINACIAL IMPACT CHARGE				\$0.00	\$0.00	\$0.00	(\$30.33)
	5	6	7	8	9	10	11
DAM ENERGY	\$317,022.39	\$167,812.17	\$165,960.97	\$314,497.98	\$331,383.52	\$244,105.40	\$252,318.48
DAM LOSSES	(\$661,676.86)	(\$312,238.32)	(\$313,553.42)	(\$558,932.38)	(\$590,066.39)	(\$467,508.13)	(\$471,693.01)
BALANCING ENERGY	(\$37,457.59)	(\$4,531.37)	(\$4,024.19)	(\$28,783.41)	(\$89,319.59)	(\$8,904.37)	(\$26,746.36)
BALANCING LOSSES	\$5,938.22	(\$13,131.01)	(\$16,571.45)	(\$31,399.51)	(\$20,939.93)	(\$7,787.49)	\$5,600.53
BALANCING CONGESTION	\$114,489.83	(\$27,354.07)	\$41,878.34	(\$55,644.89)	(\$3,305.65)	\$63,357.50	(\$58,041.04)
FINACIAL IMPACT CHARGE	\$0.00	\$0.00	\$0.00	\$0.00	(\$8.25)	\$0.00	\$0.00
	12	13	14	15	16	17	18
DAM ENERGY	\$407,453.54	\$365,158.77	\$361,896.61	\$339,126.12	\$274,019.40	\$267,714.47	\$294,180.75
DAM LOSSES	(\$706,699.64)	(\$637,786.14)	(\$643,060.51)	(\$619,975.03)	(\$480,044.55)	(\$482,128.22)	(\$524,678.44)
BALANCING ENERGY	(\$91,097.88)	(\$78,012.46)	(\$41,627.34)	(\$6,636.90)	(\$3,436.00)	(\$5,338.24)	(\$13,298.50)
BALANCING LOSSES	\$11,315.58	\$802.34	(\$31,732.05)	(\$16,555.85)	(\$12,019.25)	(\$20,994.04)	(\$9,926.61)
BALANCING CONGESTION	\$53,779.23	\$17,067.34	\$50,131.46	\$29,129.85	\$45,880.29	\$48,599.05	\$5,581.01
FINACIAL IMPACT CHARGE	\$0.00	\$0.00	\$0.00	\$0.00	\$0.00	\$0.00	\$0.00
	19	20	21	22	23	24	25
DAM ENERGY	\$437,537.99	\$452,287.27	\$493,495.85	\$399,722.54	\$358,034.83	\$332,741.38	\$277,206.97
DAM LOSSES	(\$750,561.07)	(\$780,130.55)	(\$855,764.54)	(\$697,272.66)	(\$621,403.54)	(\$577,422.86)	(\$482,929.47)
BALANCING ENERGY	(\$69,354.48)	(\$33,110.80)	\$15,375.83	(\$19,871.53)	(\$494.23)	(\$3,941.63)	(\$16,448.44)
BALANCING LOSSES	\$5,351.30	(\$20,324.42)	(\$17,463.24)	(\$5,665.24)	(\$18,133.76)	(\$20,827.42)	(\$10,387.28)
BALANCING CONGESTION	(\$4,959.28)	\$29,110.62	\$66,204.86	\$43,482.57	(\$13,574.09)	\$10,184.70	\$7,977.59
FINACIAL IMPACT CHARGE	\$0.00	\$0.00	\$0.00	\$0.00	\$0.00	\$0.00	\$0.00
	26	27	28	29	30	31	
DAM ENERGY	\$339,847.29	\$294,042.87	\$324,752.74	\$327,715.52	\$266,972.34	\$195,536.36	
DAM LOSSES	(\$601,330.52)	(\$507,582.49)	(\$569,973.69)	(\$588,539.20)	(\$487,257.59)	(\$348,963.46)	
BALANCING ENERGY	\$10,195.34	(\$9,407.49)	(\$19,831.25)	(\$22,624.60)	\$11,165.02	\$6,687.19	
BALANCING LOSSES	(\$23,139.69)	(\$27,052.61)	(\$6,856.00)	(\$6,165.67)	(\$25,113.68)	(\$11,014.44)	
BALANCING CONGESTION	\$20,364.28	(\$58,792.40)	\$2,761.75	(\$14,169.84)	(\$23,428.69)	\$39,238.60	
FINACIAL IMPACT CHARGE	\$0.00	\$0.00	\$0.00	\$0.00	\$0.00	\$0.00	



SETTLEMENTS REPORT
 March 2018 Settlement Adjustment
 August 7, 2018

Initial Settlement – Market Costs Analysis

	MONDAY	TUESDAY	WEDNESDAY	THURSDAY	FRIDAY	SATURDAY	SUNDAY
				1	2	3	4
ENERGY				\$6,200,330.90	\$6,602,617.18	\$4,982,324.57	\$5,305,994.32
TRANSMISSION SERVICE				\$1,072,000.84	\$1,072,451.88	\$946,182.33	\$881,602.01
UPLIFT				\$58,644.03	\$91,682.01	\$112,384.38	\$253,002.41
RESIDUALS				(\$203,007.41)	(\$135,356.61)	(\$229,226.35)	(\$319,462.92)
ANCILLARY SERVICES				\$1,044,504.20	\$1,090,952.63	\$1,091,398.55	\$1,035,816.64
TCC				\$1,085,134.88	\$1,284,698.53	\$1,204,469.63	\$833,135.74
	5	6	7	8	9	10	11
ENERGY	\$7,230,529.71	\$7,066,333.85	\$8,549,594.82	\$7,657,181.78	\$7,728,437.12	\$6,773,630.06	\$5,583,838.20
TRANSMISSION SERVICE	\$1,012,773.16	\$1,299,409.89	\$1,435,560.77	\$1,058,396.11	\$1,147,256.23	\$816,613.79	\$688,205.57
UPLIFT	\$111,292.27	\$271,682.05	\$75,616.11	\$105,268.17	\$115,295.39	\$223,680.21	\$188,685.02
RESIDUALS	(\$166,437.99)	(\$191,029.30)	(\$129,197.95)	(\$363,015.95)	(\$372,637.43)	(\$178,751.18)	(\$299,346.78)
ANCILLARY SERVICES	\$1,078,094.81	\$1,113,444.40	\$1,111,268.86	\$1,032,249.51	\$1,023,366.36	\$1,028,541.39	\$943,293.60
TCC	\$1,023,356.27	\$1,798,080.18	\$2,324,739.33	\$1,040,411.92	\$1,198,101.07	\$583,792.78	\$325,734.49
	12	13	14	15	16	17	18
ENERGY	\$8,178,119.13	\$8,329,582.20	\$8,644,992.65	\$8,655,490.87	\$9,375,592.36	\$7,342,576.07	\$7,581,393.58
TRANSMISSION SERVICE	\$1,181,106.77	\$1,178,183.76	\$1,179,476.50	\$1,247,874.60	\$1,489,376.69	\$948,193.90	\$878,243.05
UPLIFT	\$88,343.69	\$155,855.80	\$217,734.33	\$210,971.25	\$136,513.52	\$153,610.16	\$145,287.04
RESIDUALS	(\$327,595.85)	(\$335,270.11)	(\$310,976.44)	(\$279,515.50)	(\$179,286.05)	(\$193,648.75)	(\$248,268.86)
ANCILLARY SERVICES	\$1,073,387.57	\$1,051,630.85	\$1,044,486.16	\$1,045,721.15	\$1,109,053.84	\$1,014,053.67	\$997,071.93
TCC	\$1,275,438.63	\$1,265,073.83	\$1,412,578.35	\$1,981,436.66	\$2,252,608.40	\$1,194,616.38	\$994,288.30
	19	20	21	22	23	24	25
ENERGY	\$9,457,767.83	\$9,987,510.75	\$10,709,799.65	\$9,031,624.93	\$8,107,754.32	\$6,743,407.16	\$6,194,062.73
TRANSMISSION SERVICE	\$1,065,917.54	\$1,084,288.75	\$973,063.39	\$1,253,245.63	\$1,099,069.11	\$923,214.85	\$977,398.63
UPLIFT	\$215,302.01	\$180,386.62	\$71,314.17	\$169,637.17	\$97,517.63	\$38,052.91	\$74,094.99
RESIDUALS	(\$383,137.28)	(\$357,117.80)	(\$316,077.67)	(\$288,184.82)	(\$301,057.86)	(\$260,613.99)	(\$225,808.20)
ANCILLARY SERVICES	\$1,028,423.06	\$1,044,869.33	\$1,170,130.54	\$1,030,581.62	\$1,038,755.92	\$988,583.38	\$1,005,207.85
TCC	\$1,222,534.55	\$1,229,234.20	\$714,394.63	\$1,556,419.86	\$1,221,230.47	\$833,973.90	\$1,275,430.17
	26	27	28	29	30	31	
ENERGY	\$7,856,331.63	\$7,772,595.51	\$7,020,490.72	\$6,824,682.15	\$5,946,757.16	\$4,880,137.90	
TRANSMISSION SERVICE	\$1,059,099.35	\$1,256,924.34	\$966,981.56	\$876,157.98	\$923,903.63	\$936,905.91	
UPLIFT	\$108,941.51	\$66,918.37	\$110,411.57	\$127,044.18	\$94,435.56	\$98,976.14	
RESIDUALS	(\$257,047.78)	(\$312,453.45)	(\$271,861.46)	(\$306,884.49)	(\$258,517.67)	(\$117,375.01)	
ANCILLARY SERVICES	\$1,068,516.39	\$1,081,635.44	\$1,028,820.08	\$1,015,613.07	\$1,037,912.16	\$978,642.68	
TCC	\$1,287,942.99	\$1,543,487.17	\$763,158.34	\$578,204.65	\$824,983.25	\$955,984.52	



SETTLEMENTS REPORT
 March 2018 Settlement Adjustment
 August 7, 2018

4-Month Settlement Adjustment – Market Costs Analysis

	MONDAY	TUESDAY	WEDNESDAY	THURSDAY	FRIDAY	SATURDAY	SUNDAY
				1	2	3	4
ENERGY				\$6,196,396.17	\$6,598,118.06	\$4,980,756.15	\$5,298,255.65
TRANSMISSION SERVICE				\$1,070,956.14	\$1,071,473.02	\$945,064.42	\$880,386.24
UPLIFT				\$58,644.03	\$91,682.01	\$112,384.37	\$253,002.40
RESIDUALS				(\$200,478.68)	(\$131,058.64)	(\$228,260.62)	(\$317,369.75)
ANCILLARY SERVICES				\$1,042,587.30	\$1,088,162.09	\$1,089,221.61	\$1,033,302.71
TCC				\$1,085,726.93	\$1,286,275.27	\$1,205,254.55	\$834,095.83
	5	6	7	8	9	10	11
ENERGY	\$7,215,244.17	\$7,060,727.07	\$8,536,301.05	\$7,642,008.52	\$7,724,125.47	\$6,773,128.94	\$5,582,357.61
TRANSMISSION SERVICE	\$1,011,159.70	\$1,298,369.21	\$1,434,398.07	\$1,057,060.41	\$1,145,862.82	\$815,523.77	\$687,217.68
UPLIFT	\$111,292.28	\$271,690.64	\$75,629.38	\$105,275.26	\$115,295.39	\$223,680.11	\$188,685.01
RESIDUALS	(\$161,684.01)	(\$189,442.60)	(\$126,309.75)	(\$360,262.21)	(\$372,256.29)	(\$176,737.09)	(\$298,561.40)
ANCILLARY SERVICES	\$1,076,080.76	\$1,101,211.84	\$1,111,099.66	\$1,029,987.50	\$1,020,671.82	\$1,026,031.13	\$941,972.18
TCC	\$1,023,298.13	\$1,808,994.33	\$2,323,372.80	\$1,040,922.37	\$1,199,042.35	\$584,971.78	\$325,823.83
	12	13	14	15	16	17	18
ENERGY	\$8,174,870.60	\$8,326,304.03	\$8,637,348.00	\$8,650,331.75	\$9,368,720.64	\$7,340,346.58	\$7,580,582.96
TRANSMISSION SERVICE	\$1,180,322.76	\$1,177,565.51	\$1,178,777.44	\$1,247,183.88	\$1,488,519.98	\$946,930.24	\$877,092.17
UPLIFT	\$88,345.53	\$155,855.81	\$217,734.33	\$210,971.23	\$136,513.51	\$153,610.42	\$145,287.03
RESIDUALS	(\$325,249.17)	(\$332,770.15)	(\$304,391.83)	(\$274,911.81)	(\$175,600.11)	(\$192,146.98)	(\$248,141.79)
ANCILLARY SERVICES	\$1,072,193.77	\$1,050,162.41	\$1,042,859.65	\$1,040,565.85	\$1,103,139.91	\$1,012,143.45	\$995,448.55
TCC	\$1,275,654.21	\$1,265,769.17	\$1,413,331.47	\$1,985,729.27	\$2,257,411.07	\$1,194,954.21	\$994,478.77
	19	20	21	22	23	24	25
ENERGY	\$9,456,824.26	\$9,982,294.74	\$10,694,300.13	\$9,023,126.28	\$8,098,084.82	\$6,737,987.40	\$6,188,183.46
TRANSMISSION SERVICE	\$1,064,870.96	\$1,083,364.24	\$972,439.96	\$1,252,602.79	\$1,098,325.11	\$922,201.87	\$976,379.14
UPLIFT	\$215,302.55	\$180,403.80	\$71,311.74	\$169,637.17	\$97,517.63	\$38,052.91	\$74,094.99
RESIDUALS	(\$381,985.54)	(\$352,167.88)	(\$298,151.24)	(\$279,604.32)	(\$295,570.79)	(\$259,265.83)	(\$224,580.63)
ANCILLARY SERVICES	\$1,026,724.89	\$1,043,414.66	\$1,169,269.17	\$1,029,120.28	\$1,036,814.94	\$988,897.23	\$1,003,195.27
TCC	\$1,222,936.88	\$1,229,541.88	\$714,443.32	\$1,557,085.65	\$1,222,186.18	\$834,339.39	\$1,276,119.60
	26	27	28	29	30	31	
ENERGY	\$7,852,187.36	\$7,768,003.04	\$7,017,067.25	\$6,818,037.00	\$5,946,438.39	\$4,881,439.82	
TRANSMISSION SERVICE	\$1,058,332.27	\$1,256,184.99	\$966,222.44	\$875,351.40	\$923,232.98	\$936,237.19	
UPLIFT	\$108,941.52	\$66,918.38	\$110,411.58	\$127,044.17	\$94,435.57	\$98,976.15	
RESIDUALS	(\$254,063.30)	(\$308,802.12)	(\$269,148.45)	(\$303,783.79)	(\$257,662.60)	(\$118,515.75)	
ANCILLARY SERVICES	\$1,066,912.29	\$1,079,414.48	\$1,028,387.59	\$1,014,337.48	\$1,036,516.70	\$976,404.25	
TCC	\$1,288,583.97	\$1,544,785.15	\$762,628.57	\$578,452.48	\$825,913.13	\$957,401.93	

