

# ***Operations Performance Metrics Monthly Report***



## ***August 2021 Report***

### **Operations & Reliability Department New York Independent System Operator**

Prepared by NYISO Operations Analysis and Services, based on settlements initial invoice data collected on or before September 9, 2021.

# **Table of Contents**

- ◆ **Highlights**
  - *Operations Performance*
  
- ◆ **Reliability Performance Metrics**
  - *Alert State Declarations*
  - *Major Emergency State Declarations*
  - *IROL Exceedance Times*
  - *Balancing Area Control Performance*
  - *Reserve Activations*
  - *Disturbance Recovery Times*
  - *Load Forecasting Performance*
  - *Wind Forecasting Performance*
  - *Wind Performance and Curtailments*
  - *BTM Solar Performance*
  - *BTM Solar Forecasting Performance*
  - *Net Load Forecasting Performance*
  - *Lake Erie Circulation and ISO Schedules*
  
- ◆ **Broader Regional Market Performance Metrics**
  - *PAR Interconnection Congestion Coordination Monthly Value*
  - *PAR Interconnection Congestion Coordination Daily Value*
  - *Regional Generation Congestion Coordination Monthly Value*
  - *Regional Generation Congestion Coordination Daily Value*
  - *Regional RT Scheduling - PJM Monthly Value*
  - *Regional RT Scheduling - PJM Daily Value*
  
- ◆ **Market Performance Metrics**
  - *Monthly Statewide Uplift Components and Rate*
  - *RTM Congestion Residuals Monthly Trend*
  - *RTM Congestion Residuals Daily Costs*
  - *RTM Congestion Residuals Event Summary*
  - *RTM Congestion Residuals Cost Categories*
  - *DAM Congestion Residuals Monthly Trend*
  - *DAM Congestion Residuals Daily Costs*
  - *DAM Congestion Residuals Cost Categories*
  - *NYCA Unit Uplift Components Monthly Trend*
  - *NYCA Unit Uplift Components Daily Costs*
  - *Local Reliability Costs Monthly Trend & Commitment Hours*
  - *TCC Monthly Clearing Price with DAM Congestion*
  - *ICAP Spot Market Clearing Price*
  - *UCAP Awards*

## August 2021 Operations Performance Highlights

- Peak load of 30,309 MW occurred on 08/26/2021 HB 16
- All-time summer capability period peak load of 33,956 MW occurred on 7/19/2013 HB 16
- 13.3 hours of Thunder Storm Alerts were declared
- 0 hours of NERC TLR level 3 curtailment
- To reduce risks from COVID-19, the NYISO continues to take several actions to maintain critical business operations and protect the health and well-being of our employees and stakeholders.
- NYISO began securing Valley Stream-Barrett 138kV (#291), Valley Stream-Barrett 138kV (#292), Montour Falls-Coddington Road 115kV (#982) & N.Troy-Reynolds Rd 115kV (#16) facilities in the Real-Time Market on 08/17/2021 and in the Day-Ahead Market execution occurring on 08/18/2021 for the 08/19/2021 market day.
- NYISO began securing Mortimer-Golah 115kV (#110) facility in the Real-Time Market on 08/31/2021 and in the Day-Ahead Market execution occurring on 09/01/2021 for the 09/02/2021 market day.

The following table identifies the estimated production cost savings associated with the Broader Regional Market initiatives.

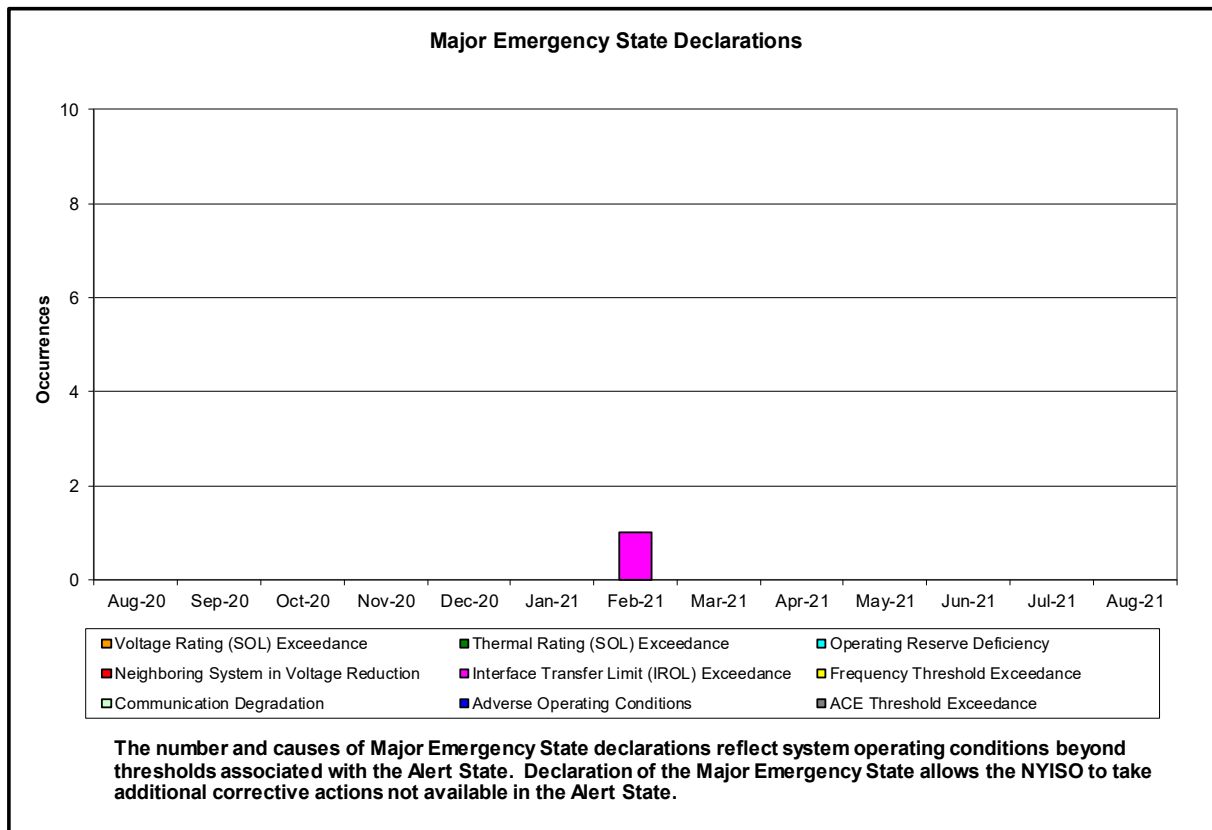
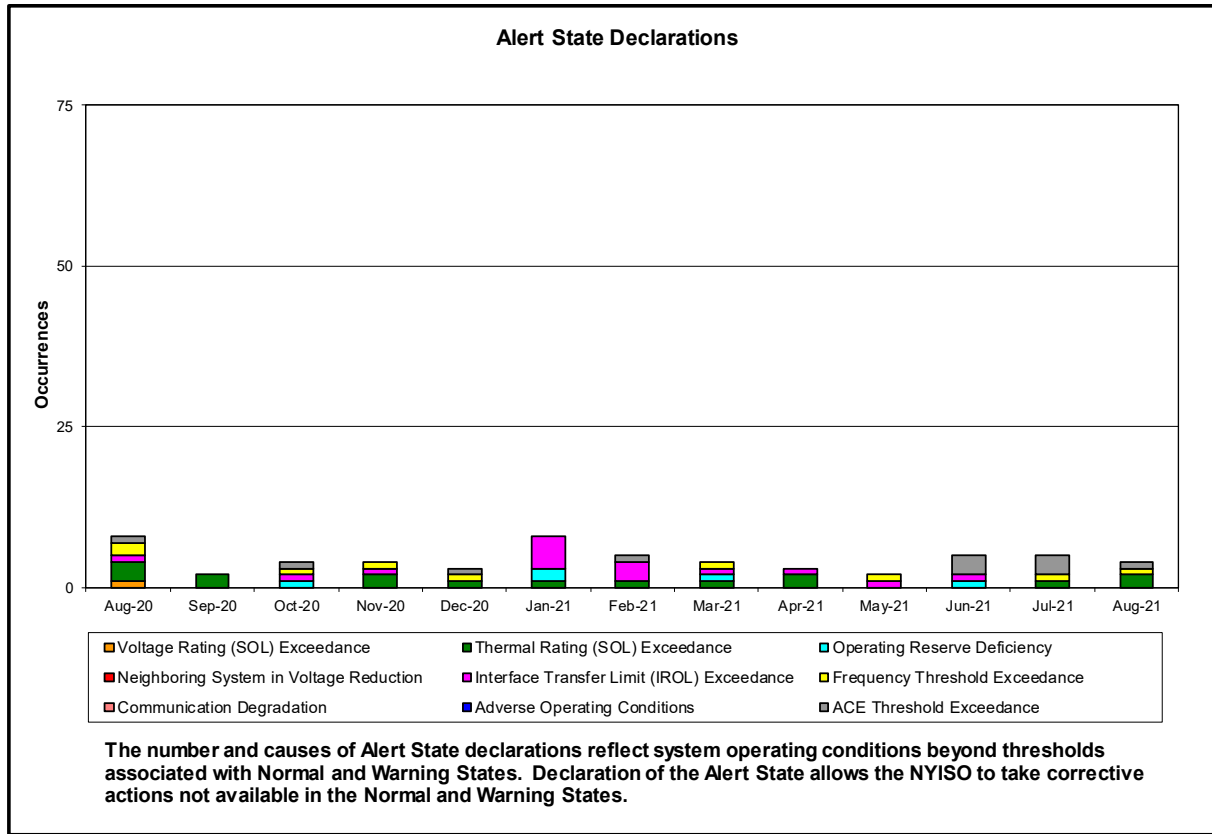
	Current Month Value (\$M)	Year-to-Date Value (\$M)
<b>NY Savings from PJM-NY Congestion Coordination</b>	(\$0.20)	\$10.92
<b>NY Savings from PJM-NY Coordinated Transaction Scheduling</b>	\$0.29	\$1.18
<b>NY Savings from NE-NY Coordinated Transaction Scheduling</b>	\$0.35	(\$1.63)
<b>Total NY Savings</b>	\$0.44	\$10.47
<b>Regional Savings from PJM-NY Coordinated Transaction Scheduling</b>	\$0.56	\$4.12
<b>Regional Savings from NE-NY Coordinated Transaction Scheduling</b>	\$0.16	\$0.08
<b>Total Regional Savings</b>	\$0.72	\$4.20

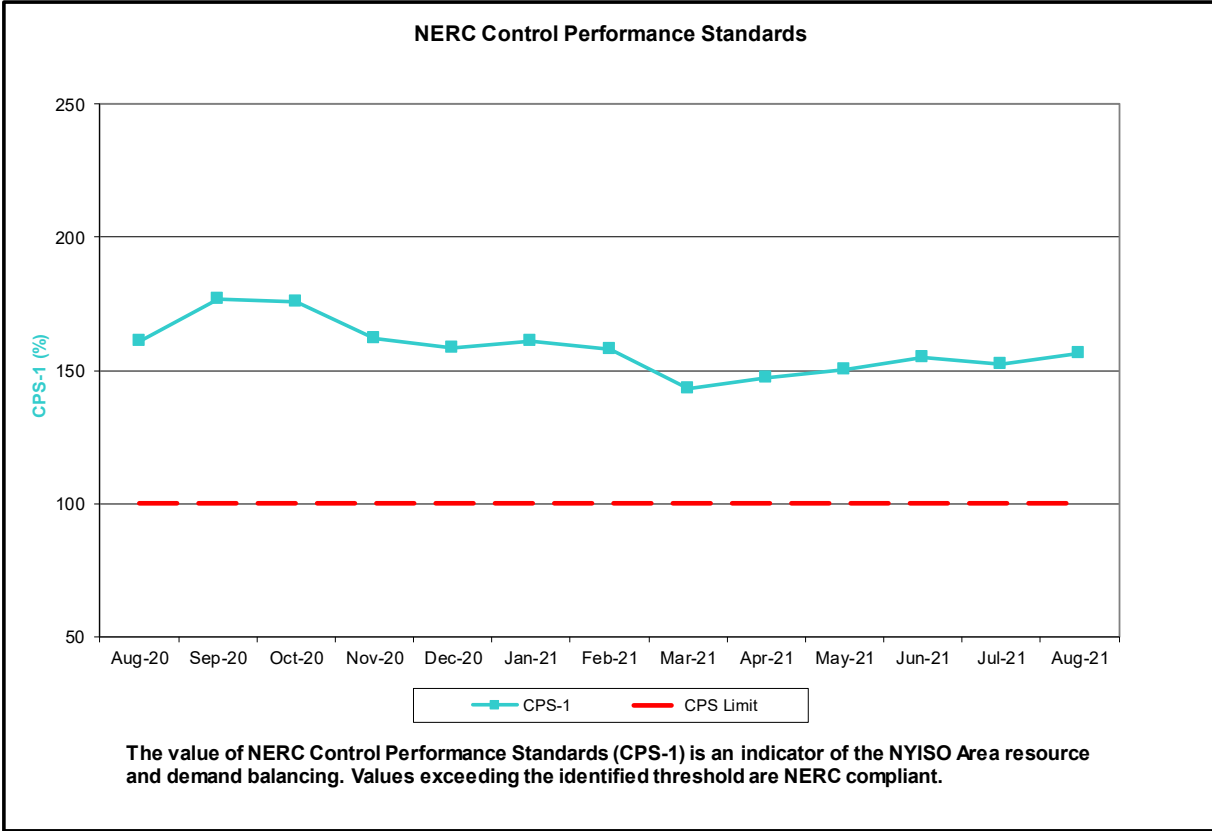
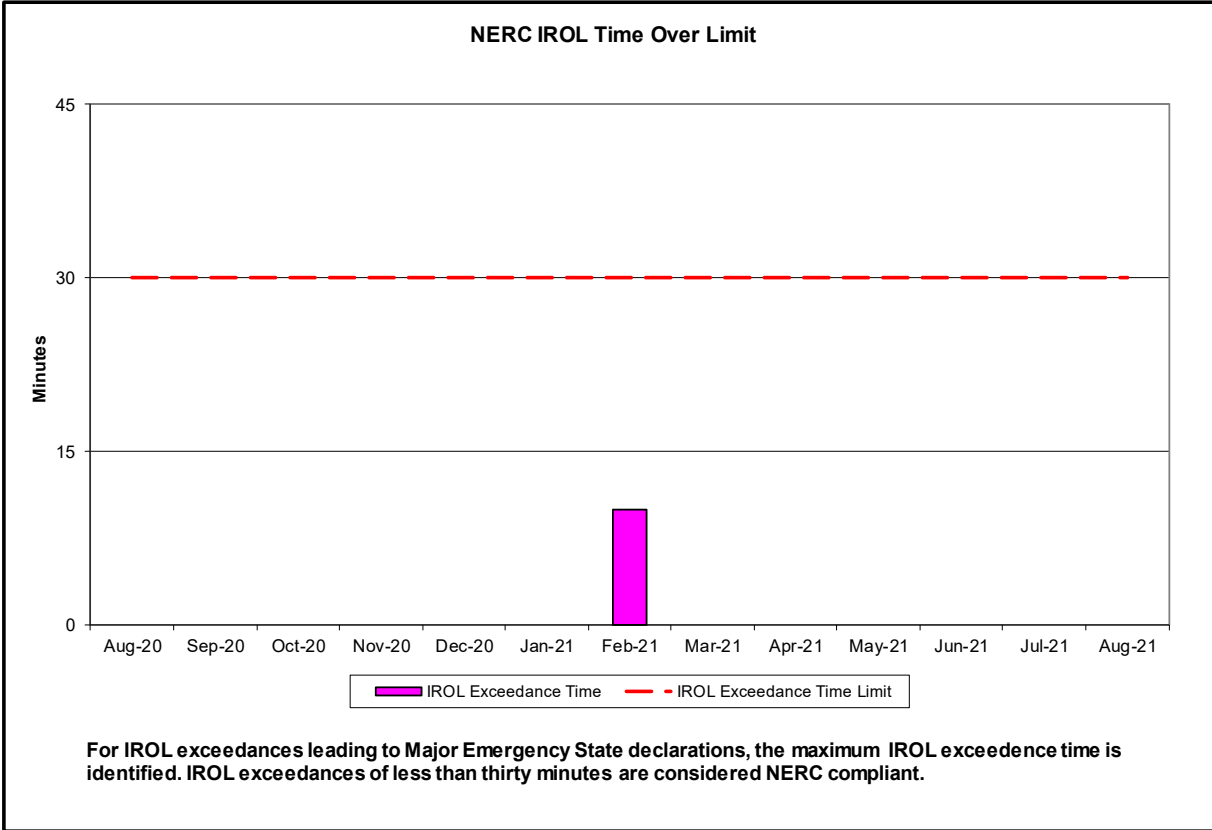
- Statewide uplift cost monthly average was (\$1.14)/MWh.
- The following table identifies the Monthly ICAP spot market prices and the price delta.

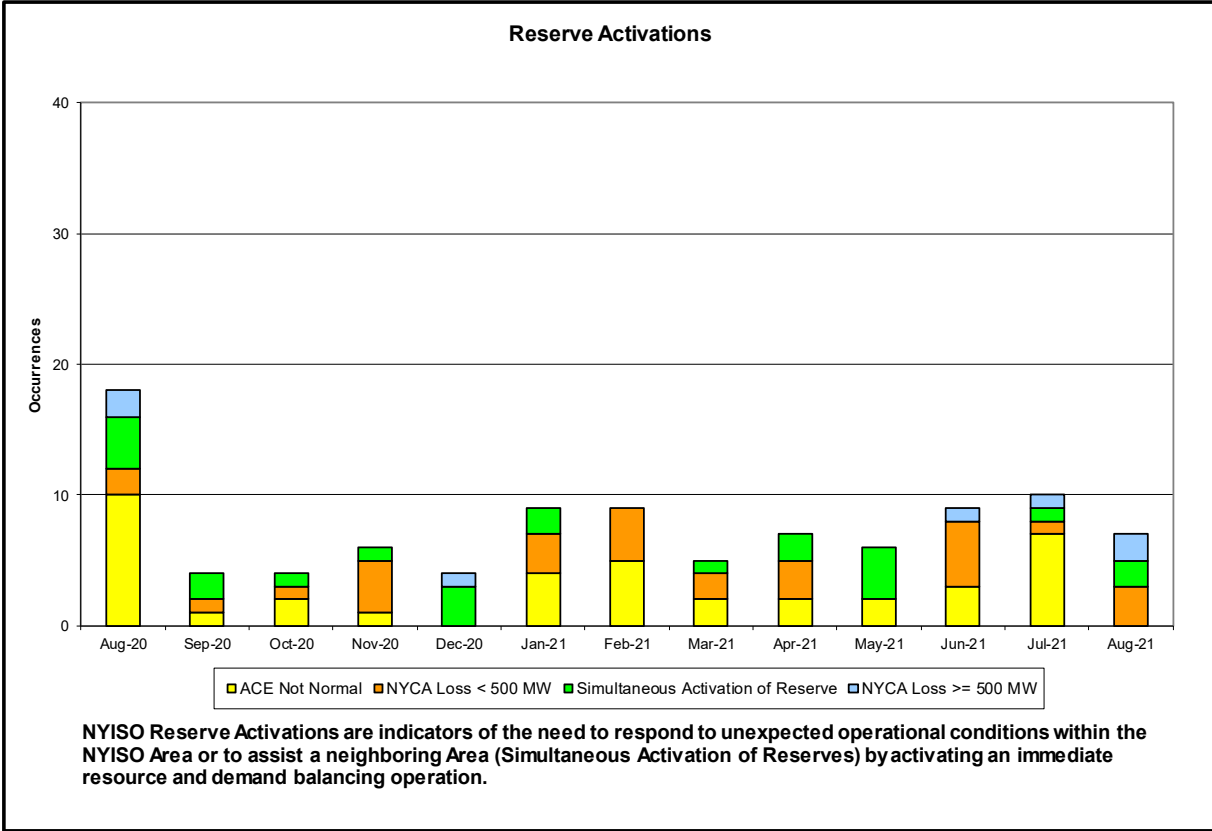
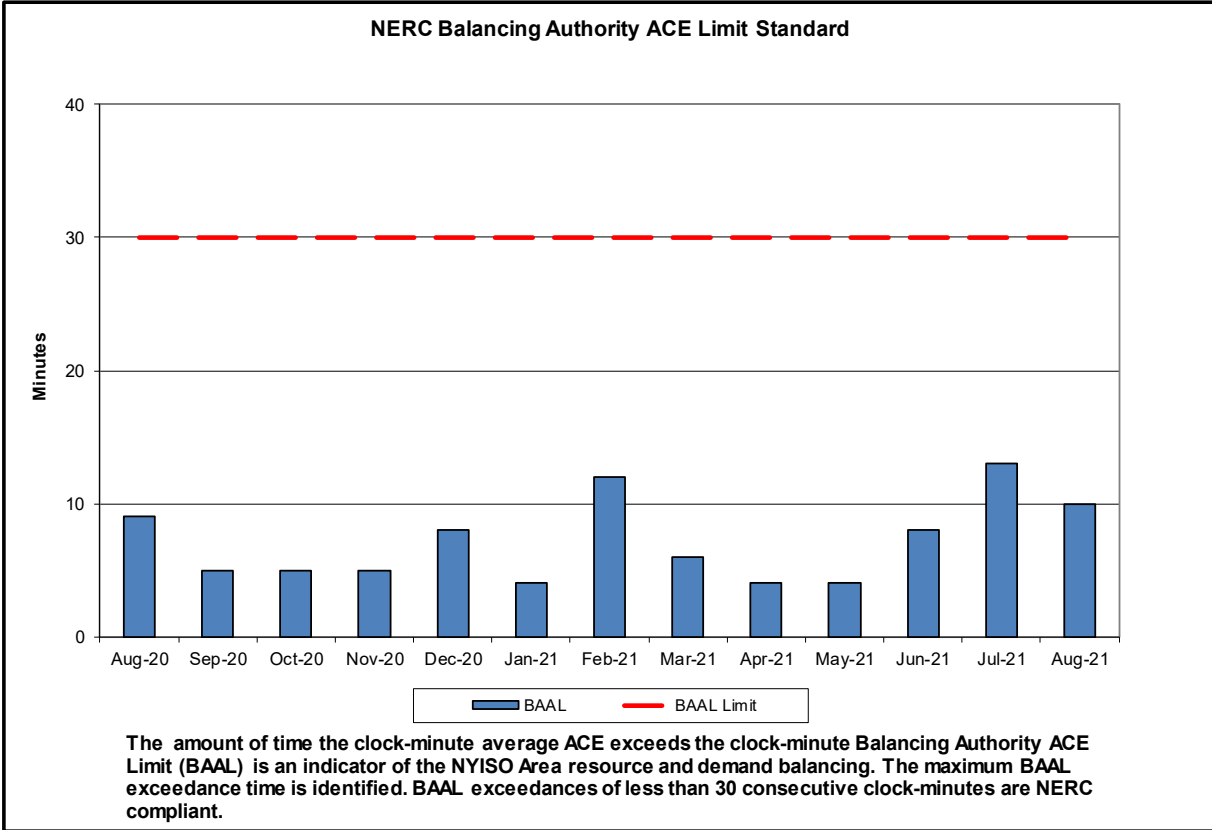
Spot Auction Price Results	NYCA	Lower Hudson Valley Zones	New York City Zone	Long Island Zone
September 2021 Spot Price	\$4.65	\$4.65	\$5.08	\$9.30
August 2021 Spot Price	\$5.43	\$5.43	\$5.43	\$10.56
Delta	(\$0.78)	(\$0.78)	(\$0.35)	(\$1.26)

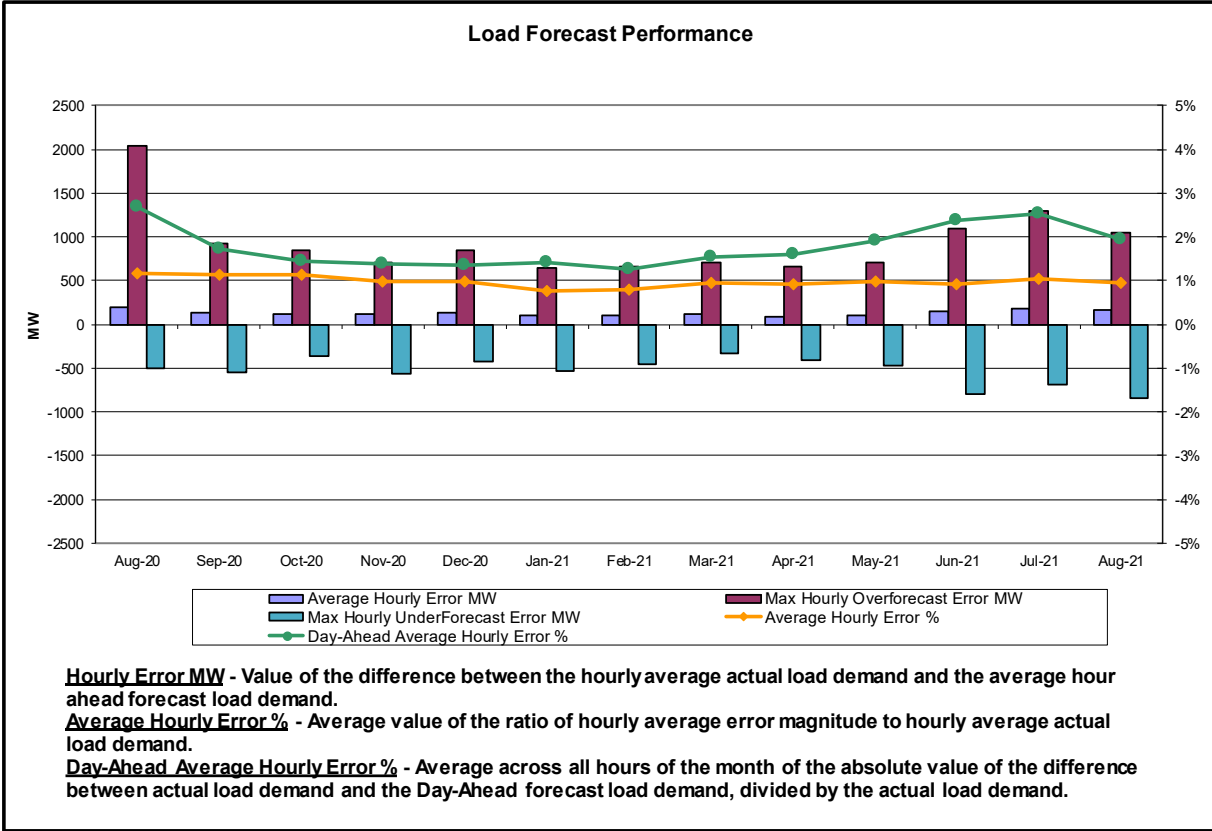
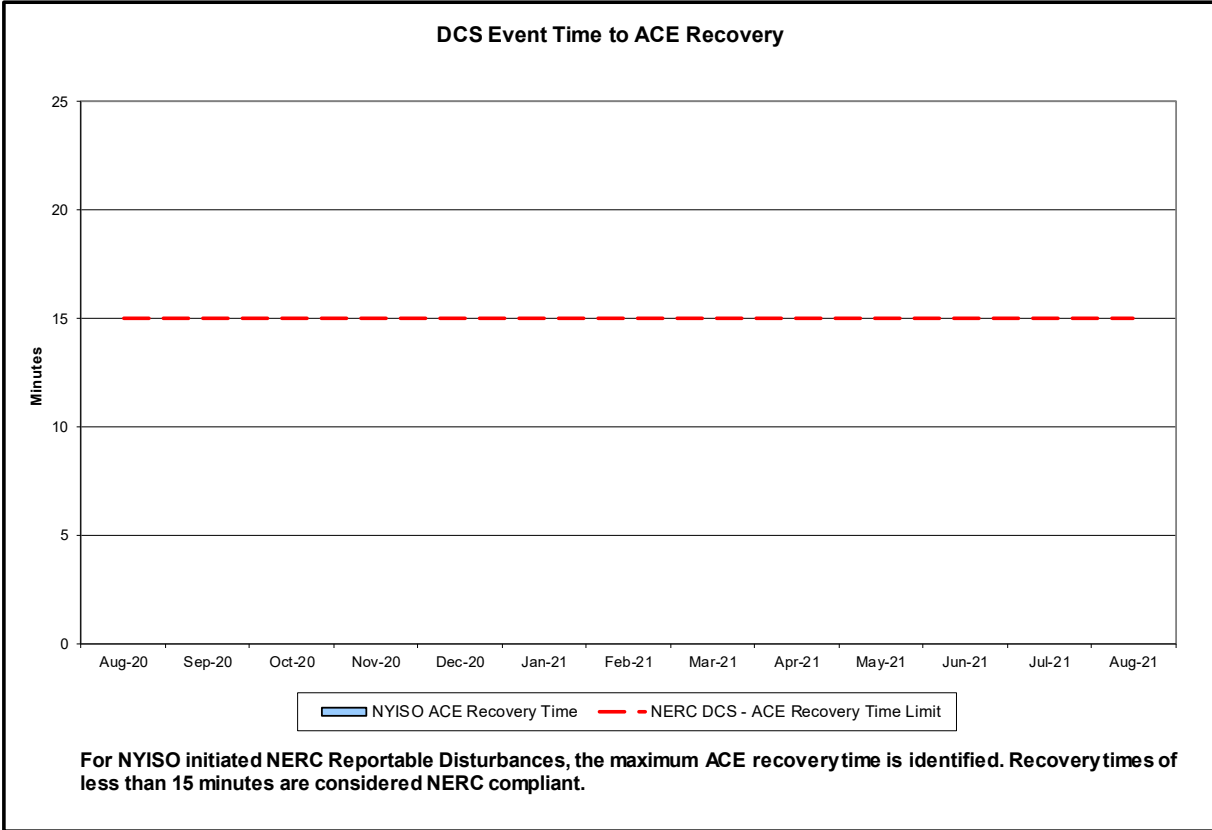
- NYCA price decreased due to increase in net imports.
- Lower Hudson Valley price was set by NYCA
- New York City price decreased due to increase in capacity sold.
- Long Island price decreased due to increase in capacity sold.

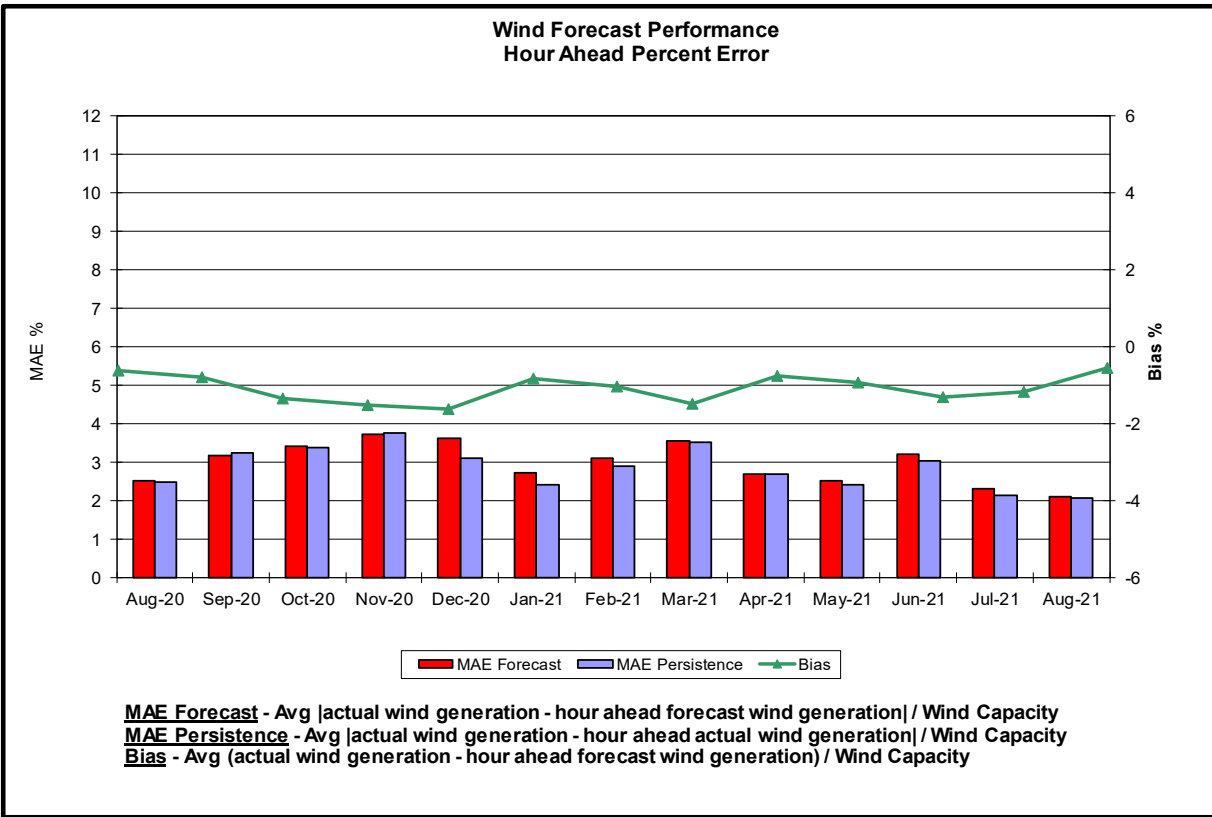
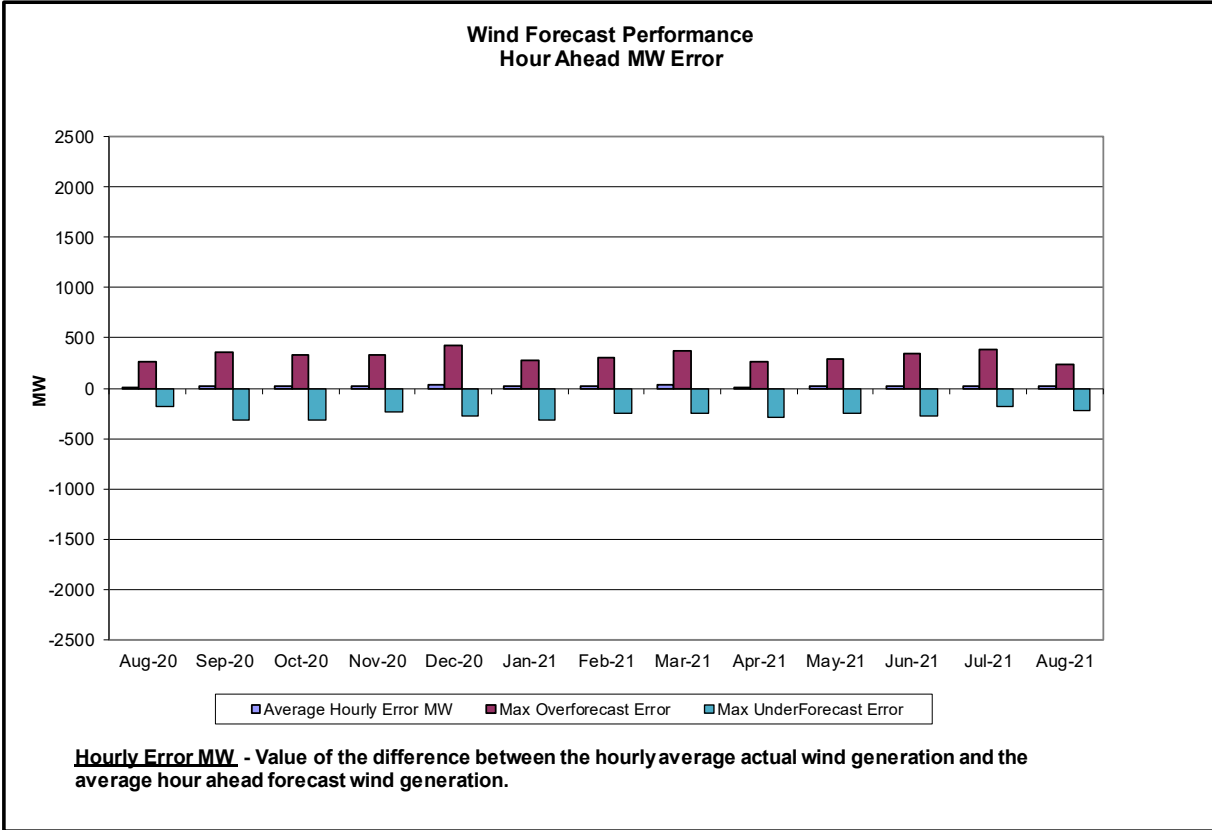
## Reliability Performance Metrics



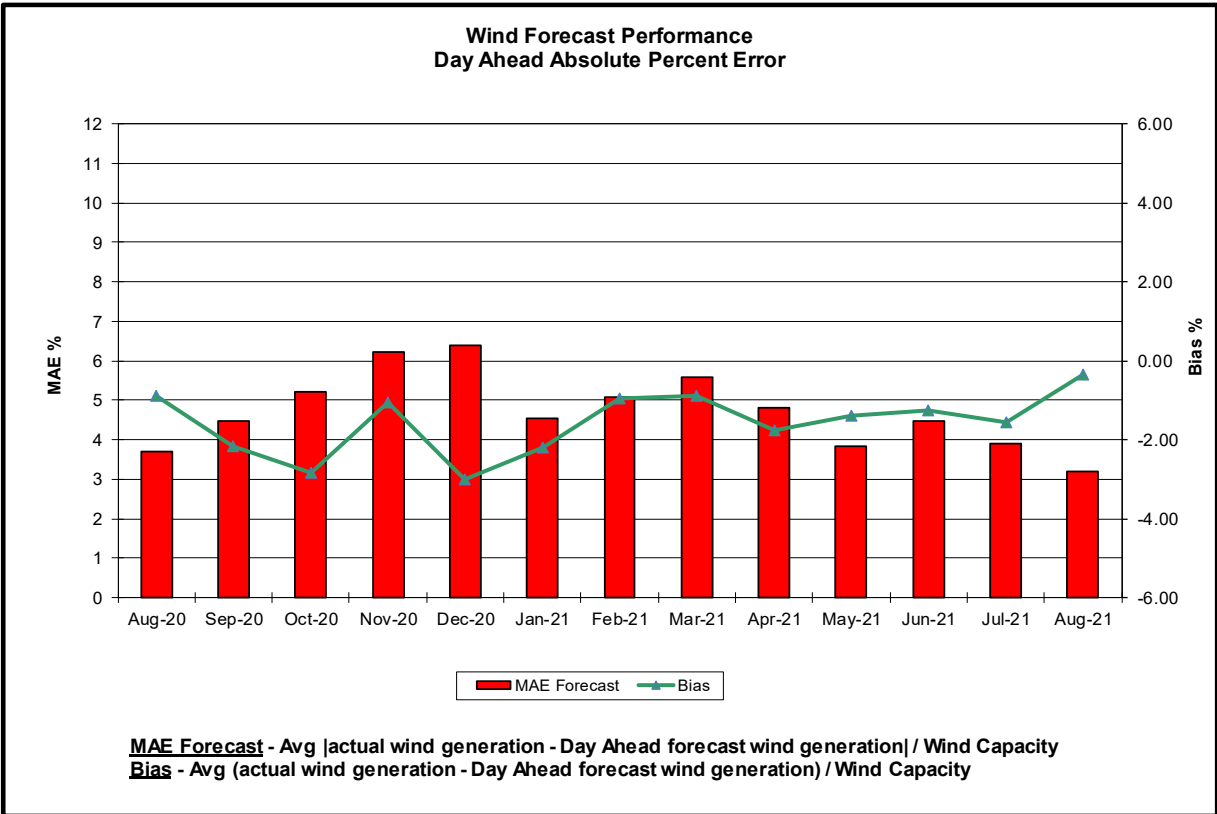
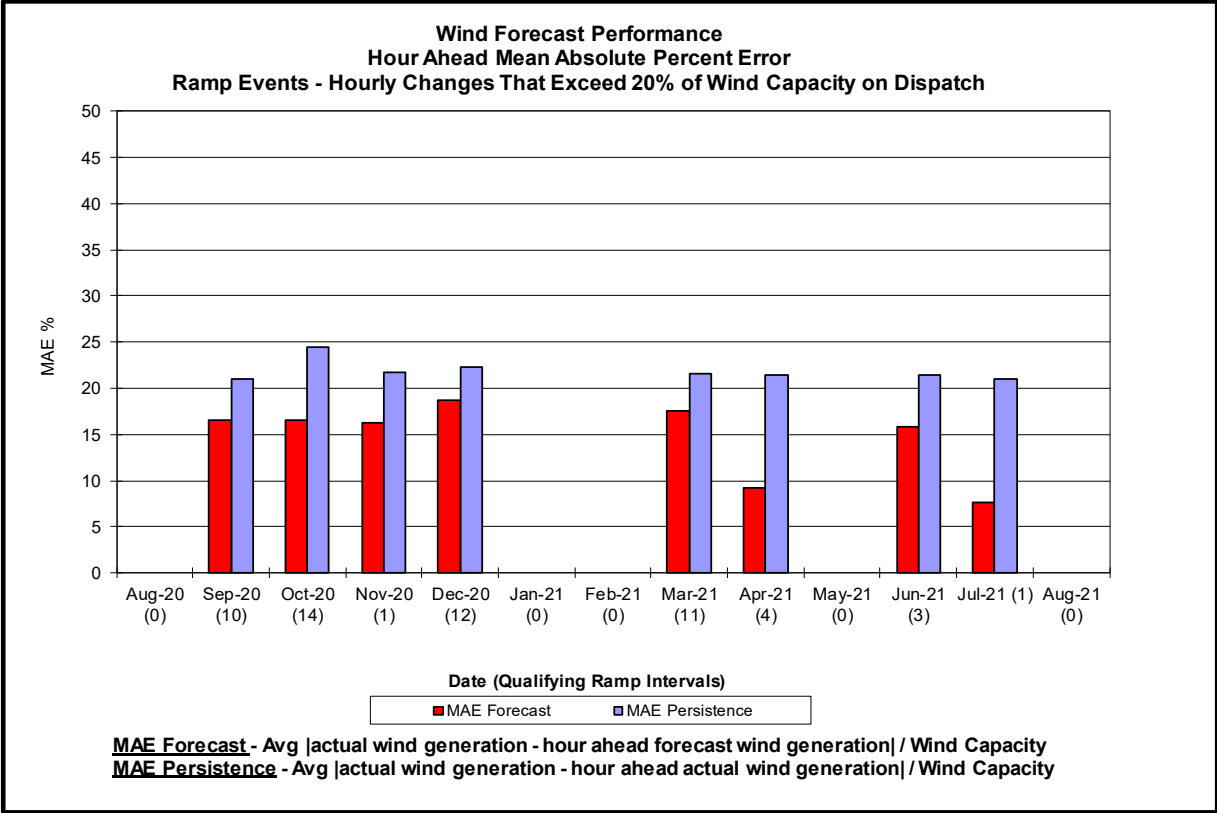


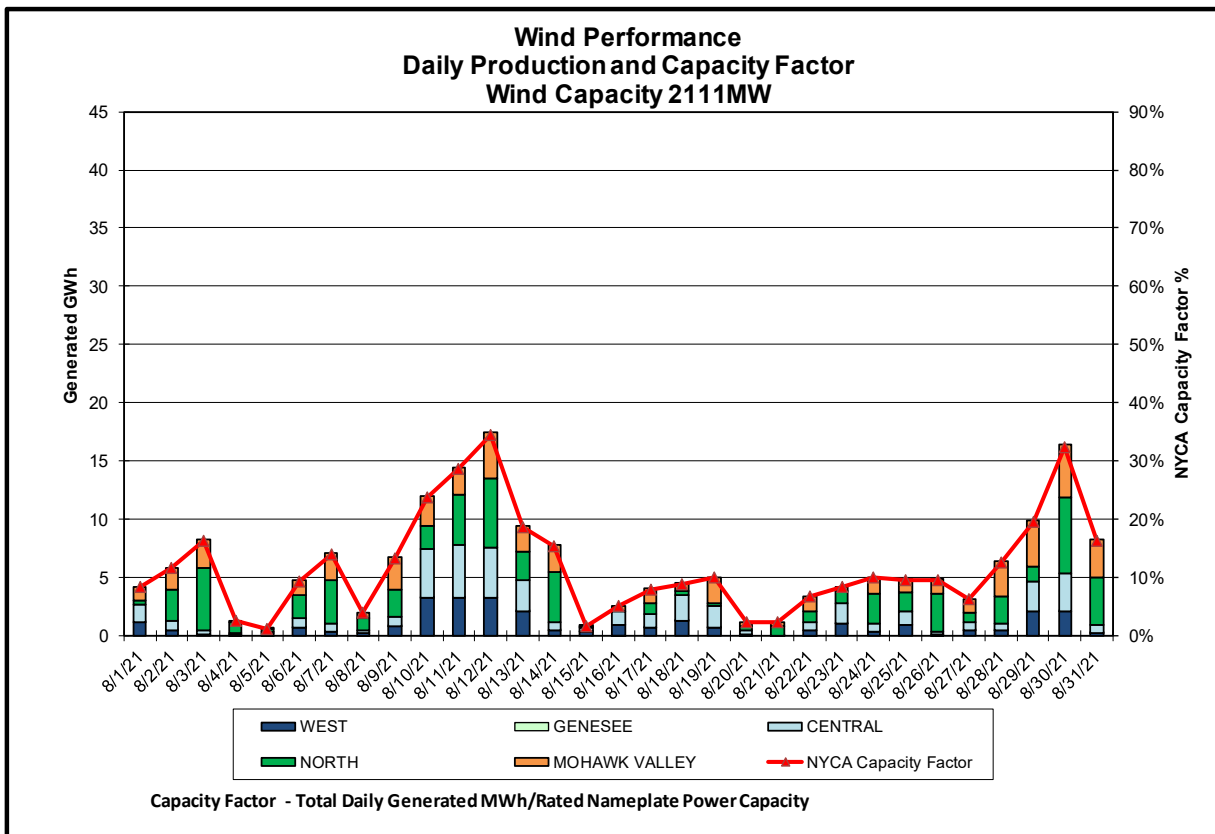
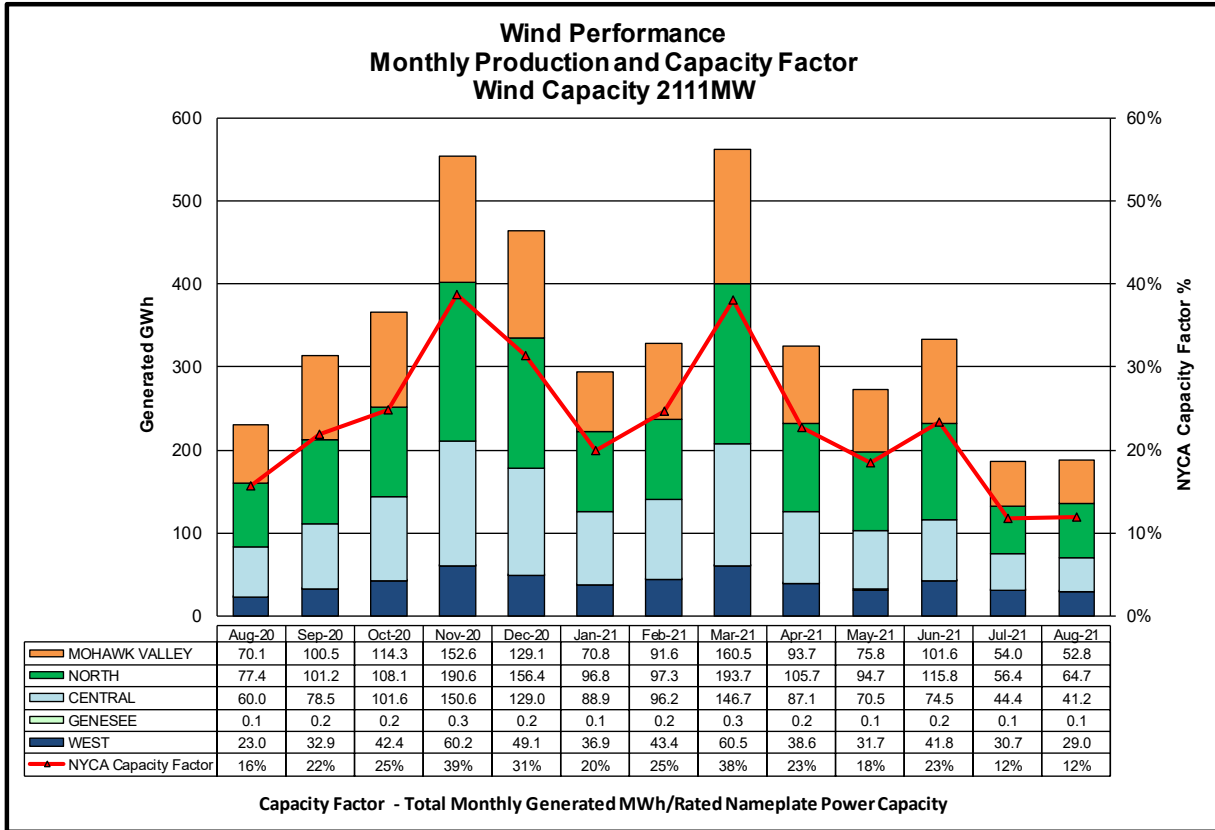


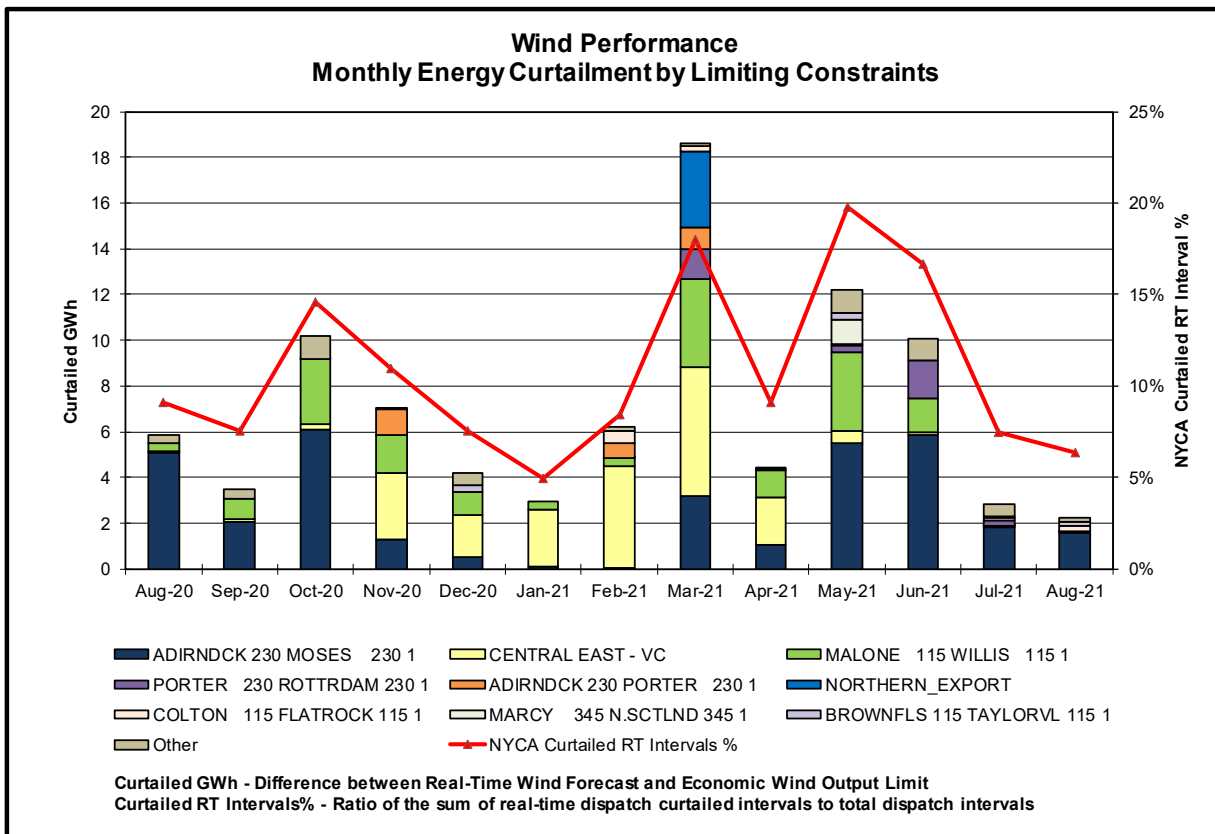
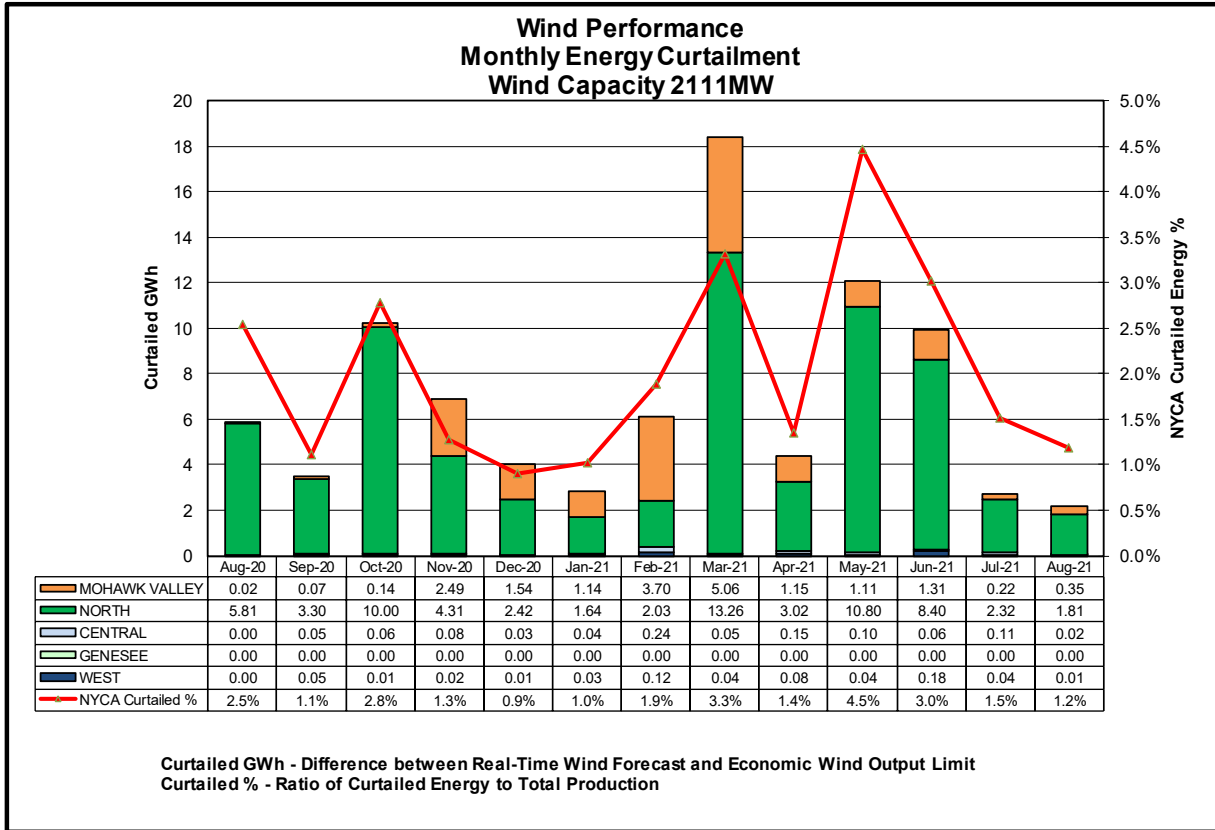


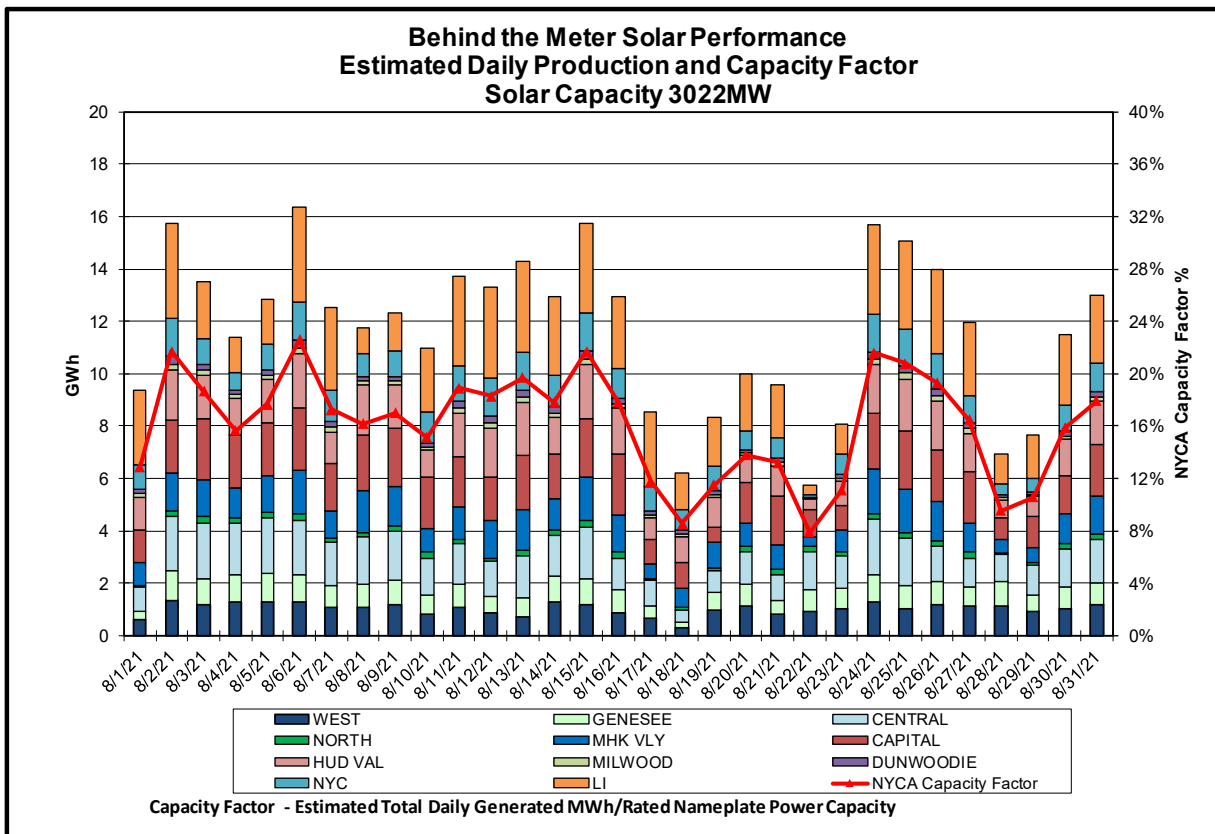
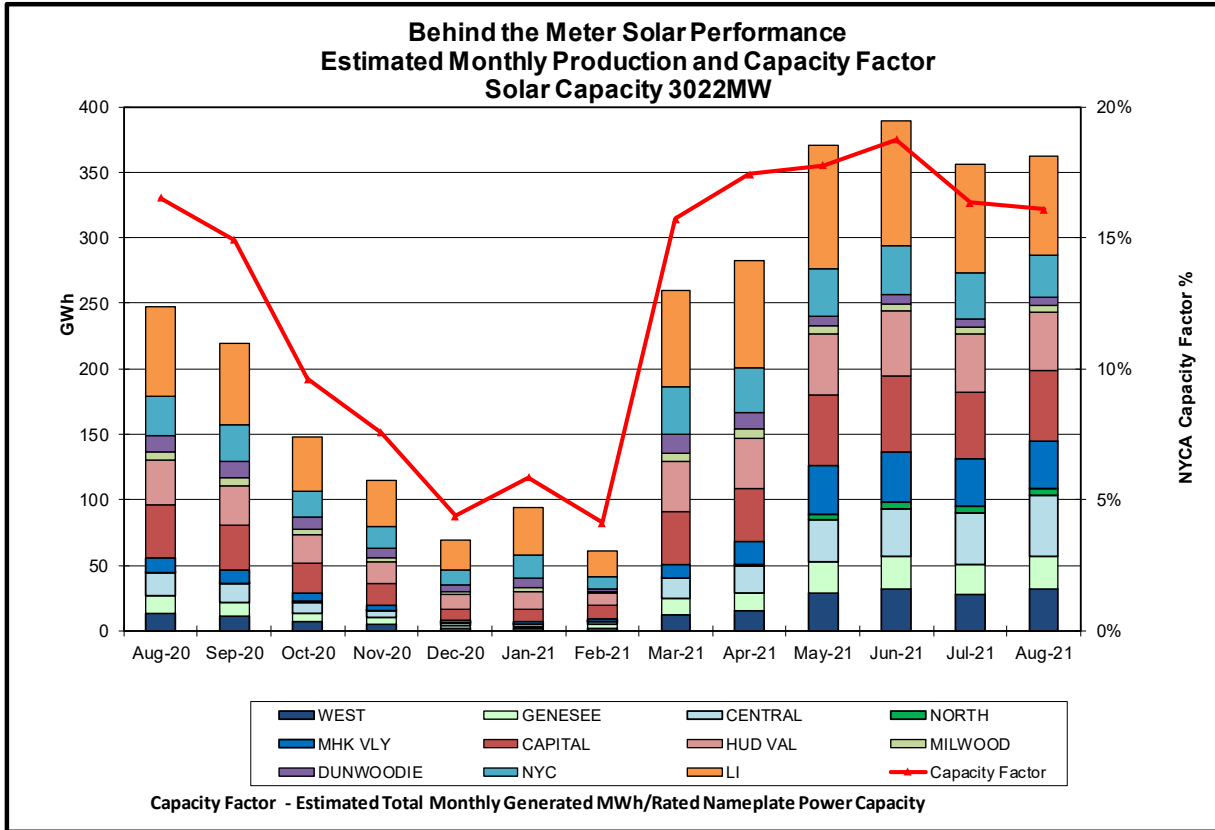


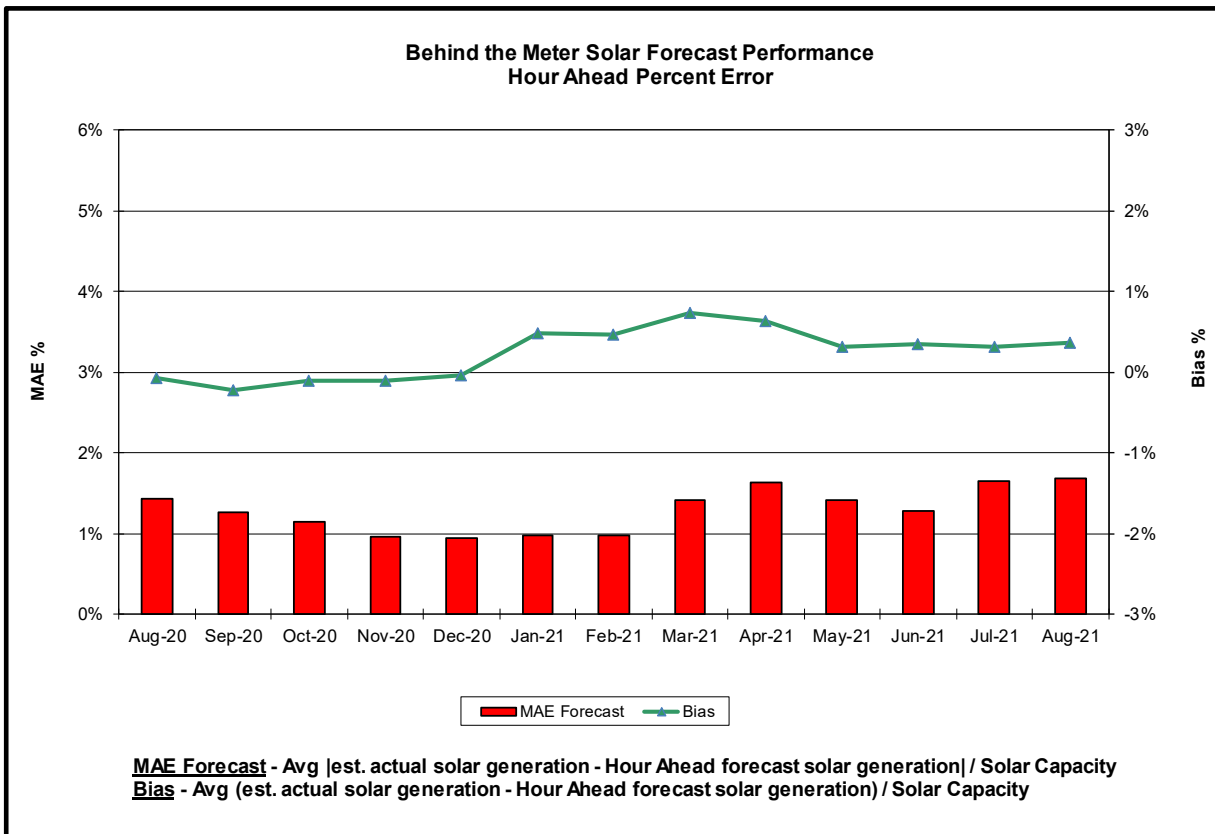
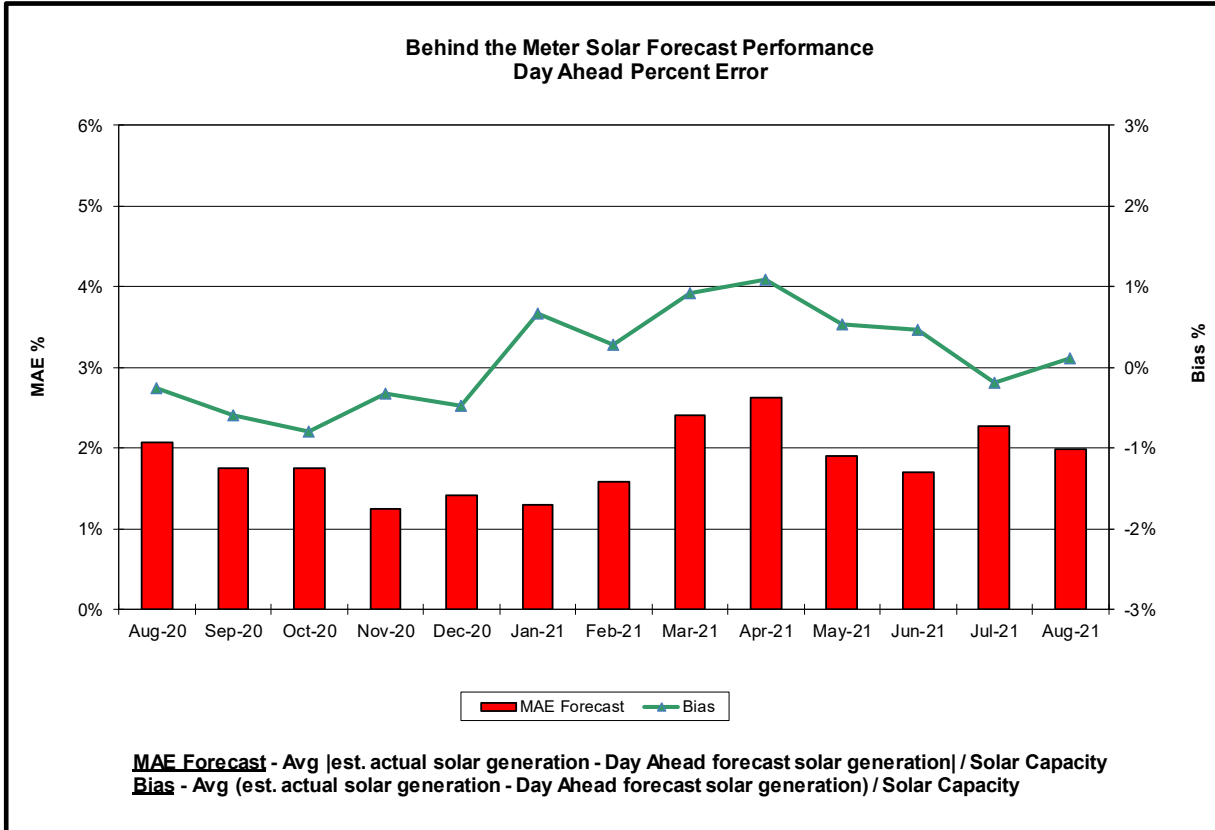


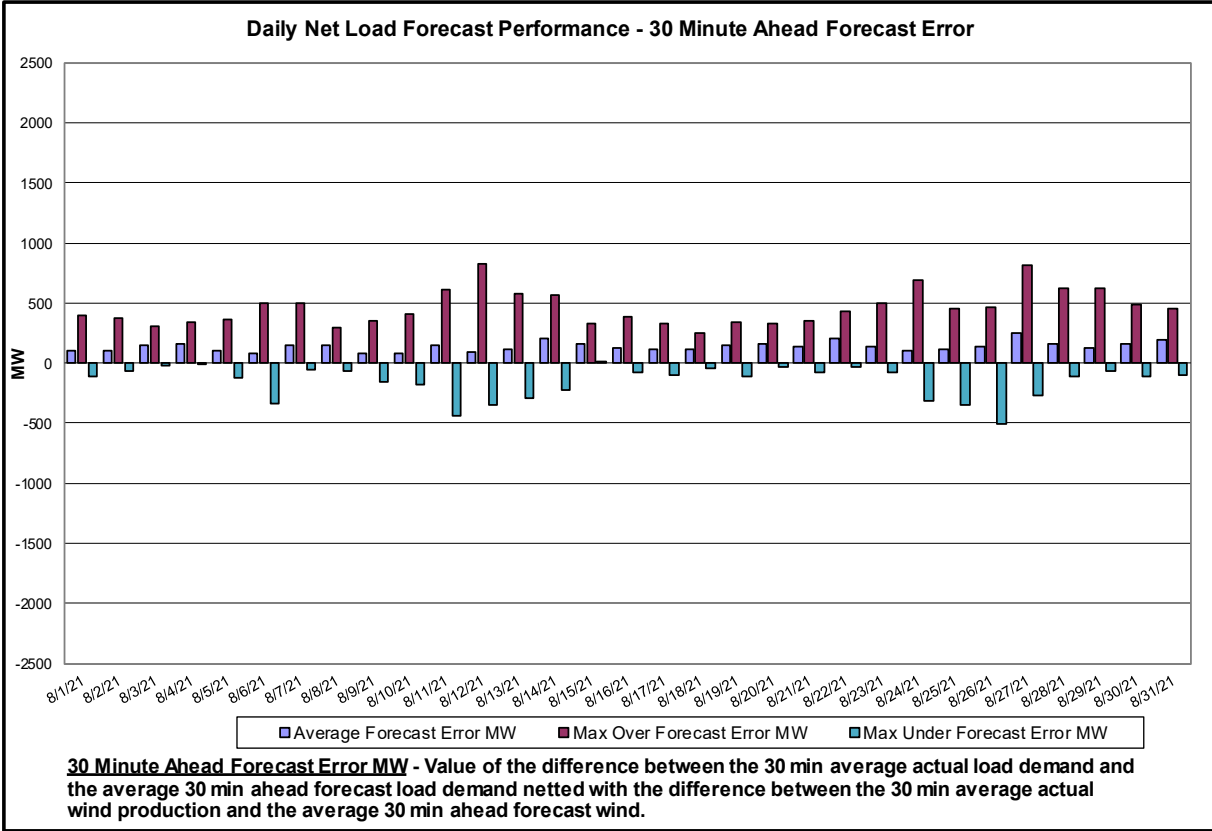
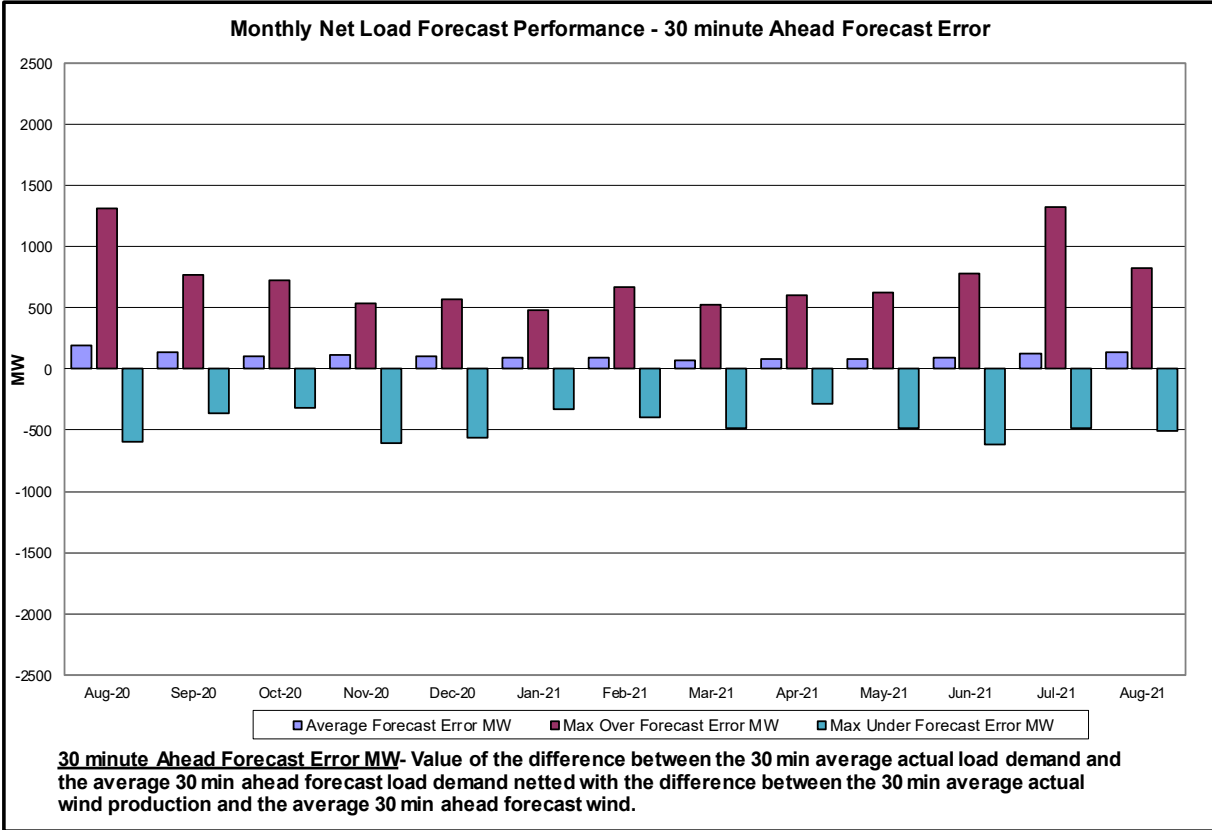


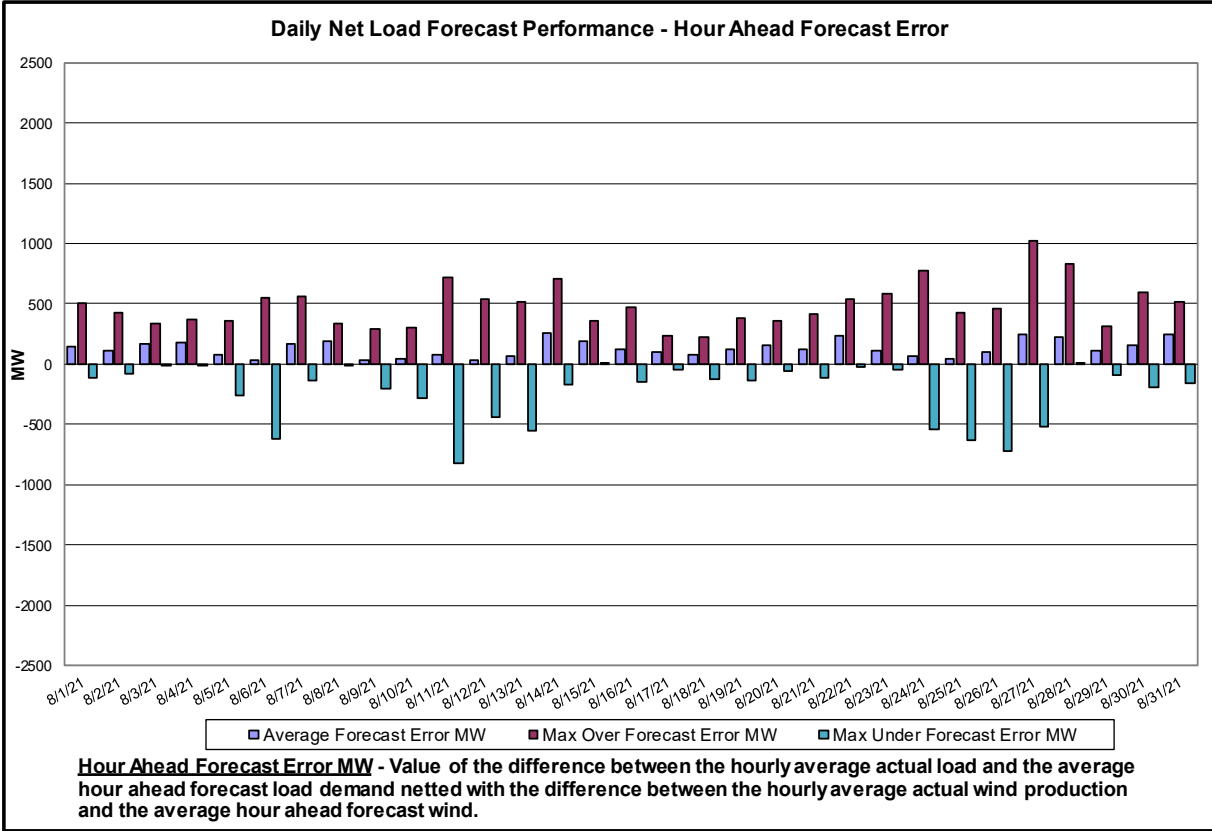
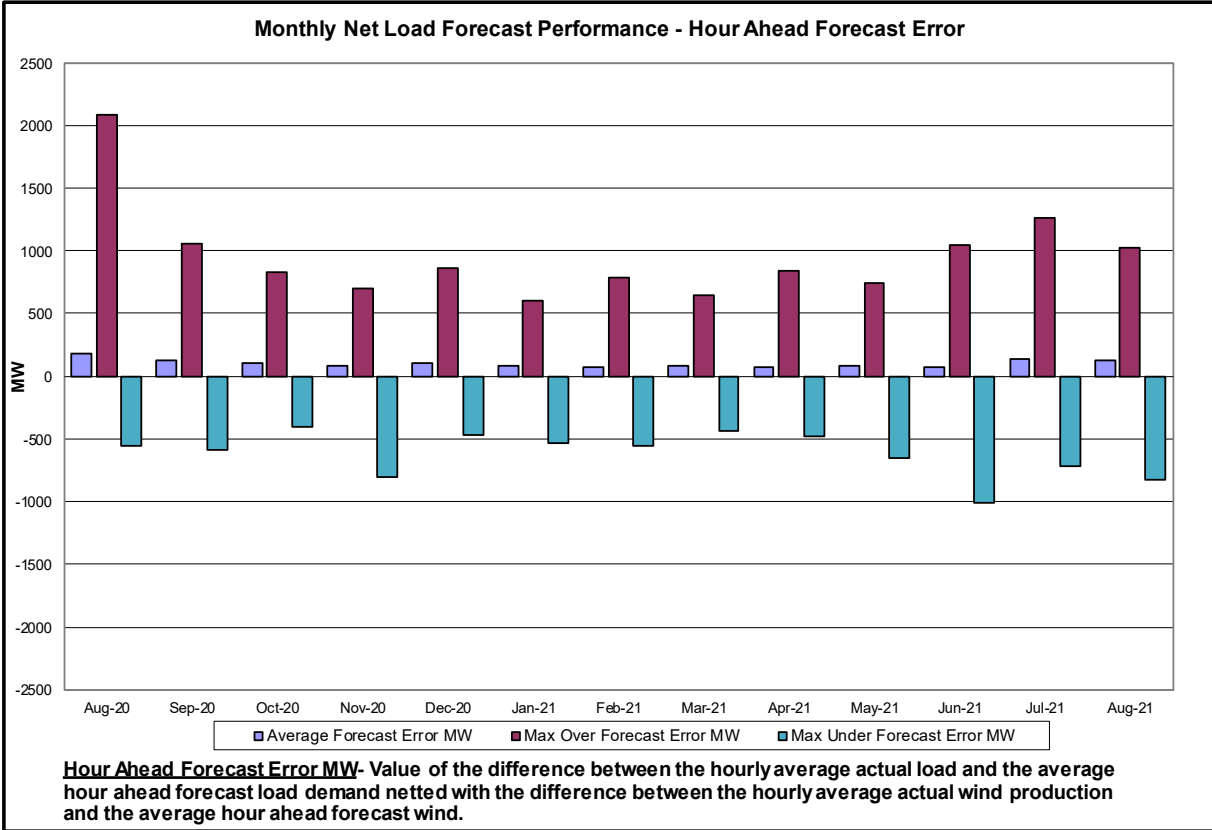


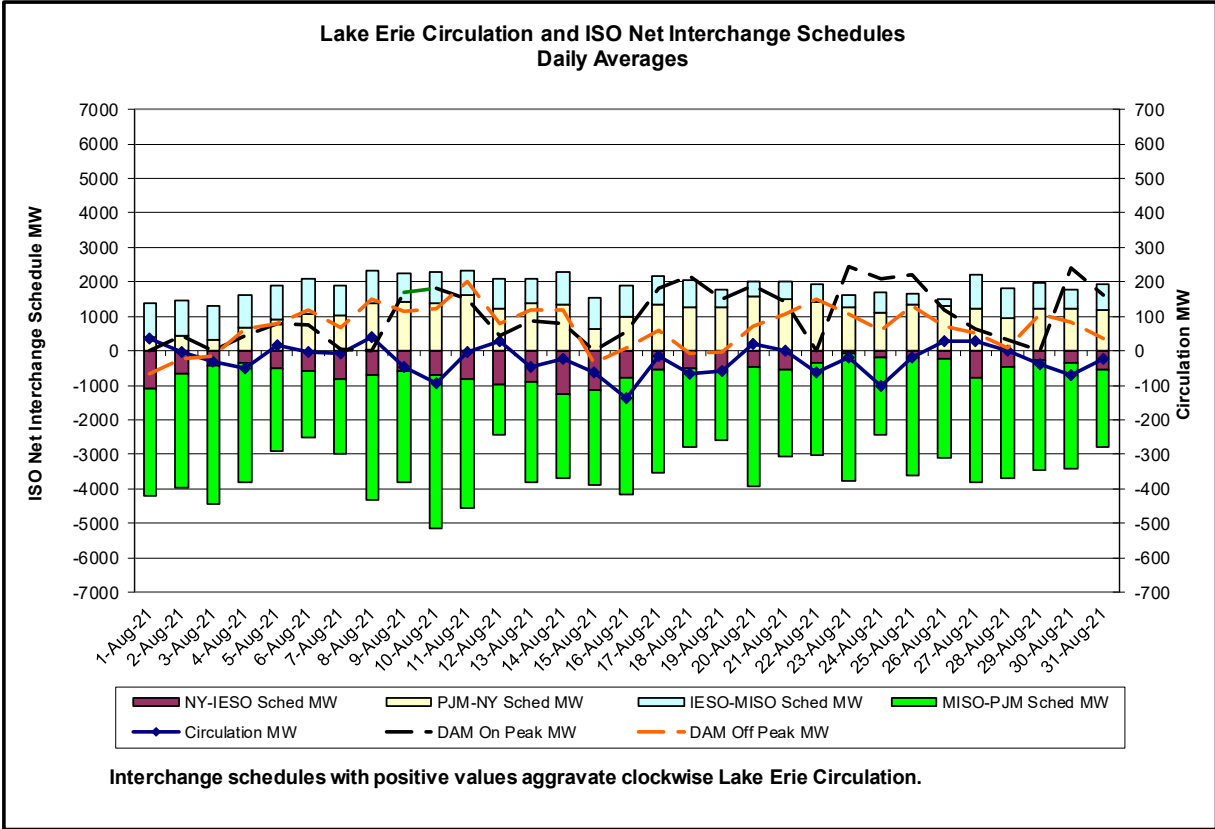
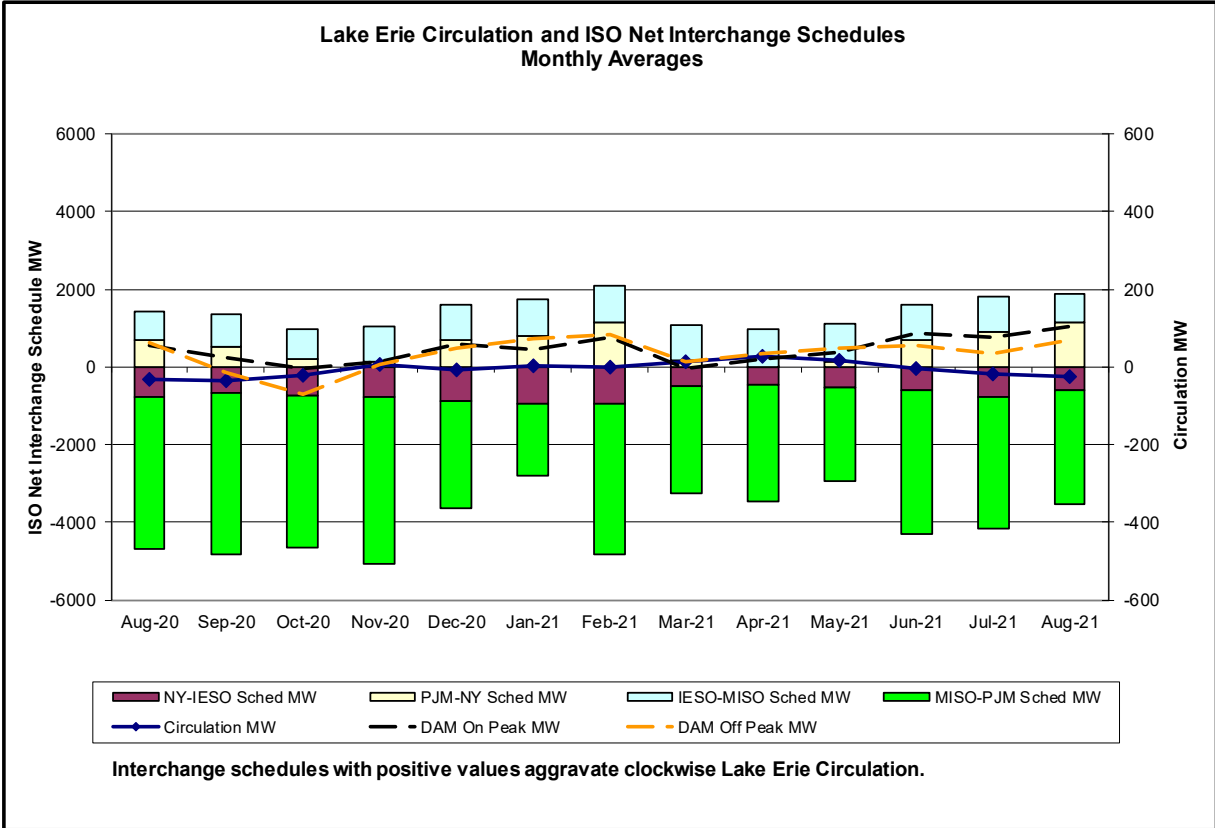






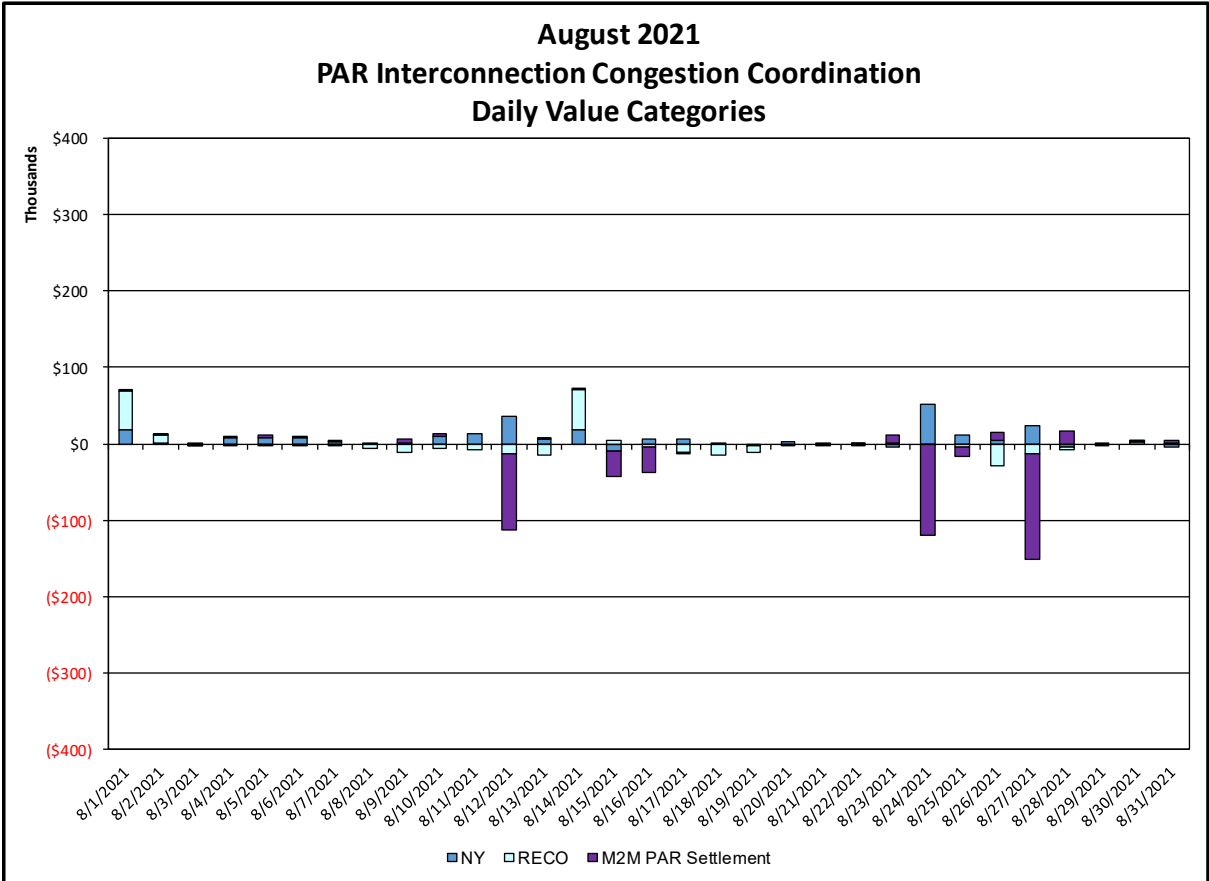
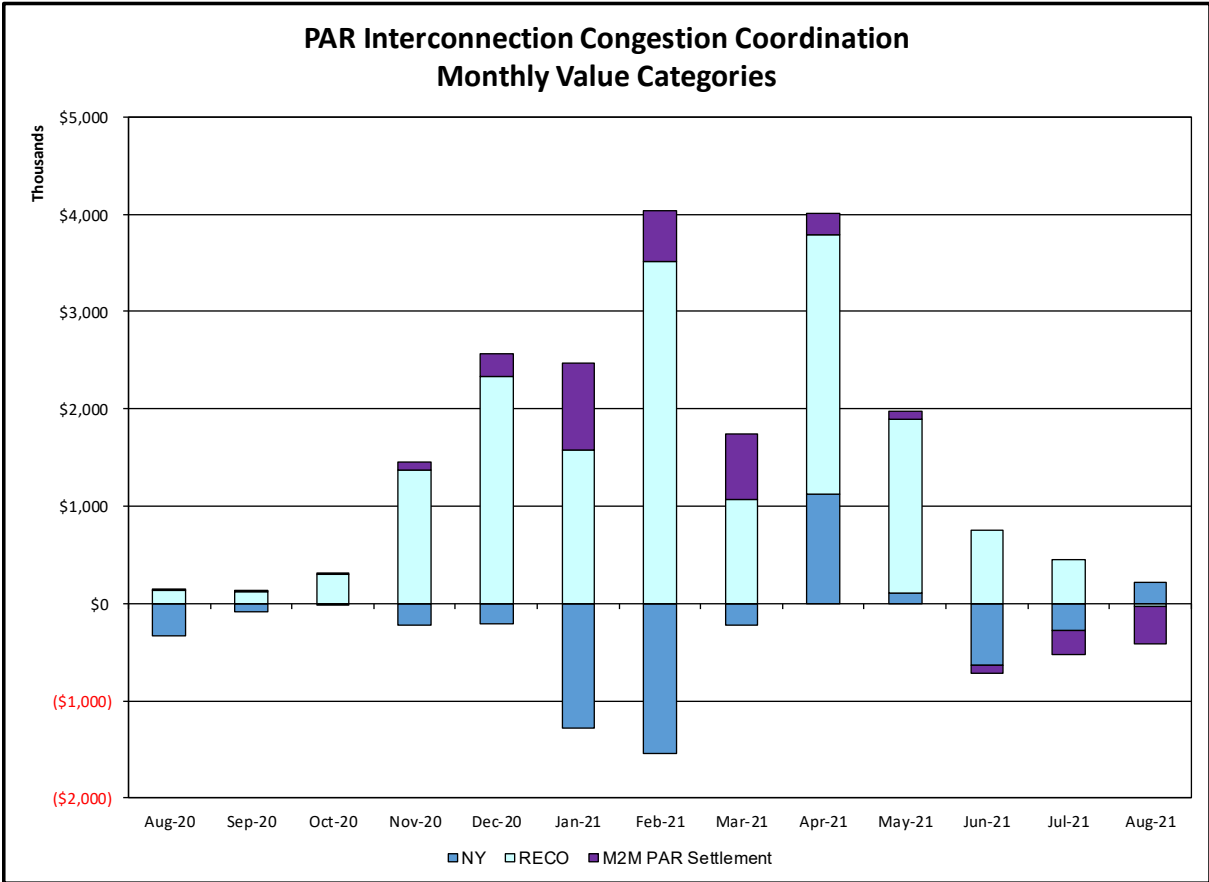









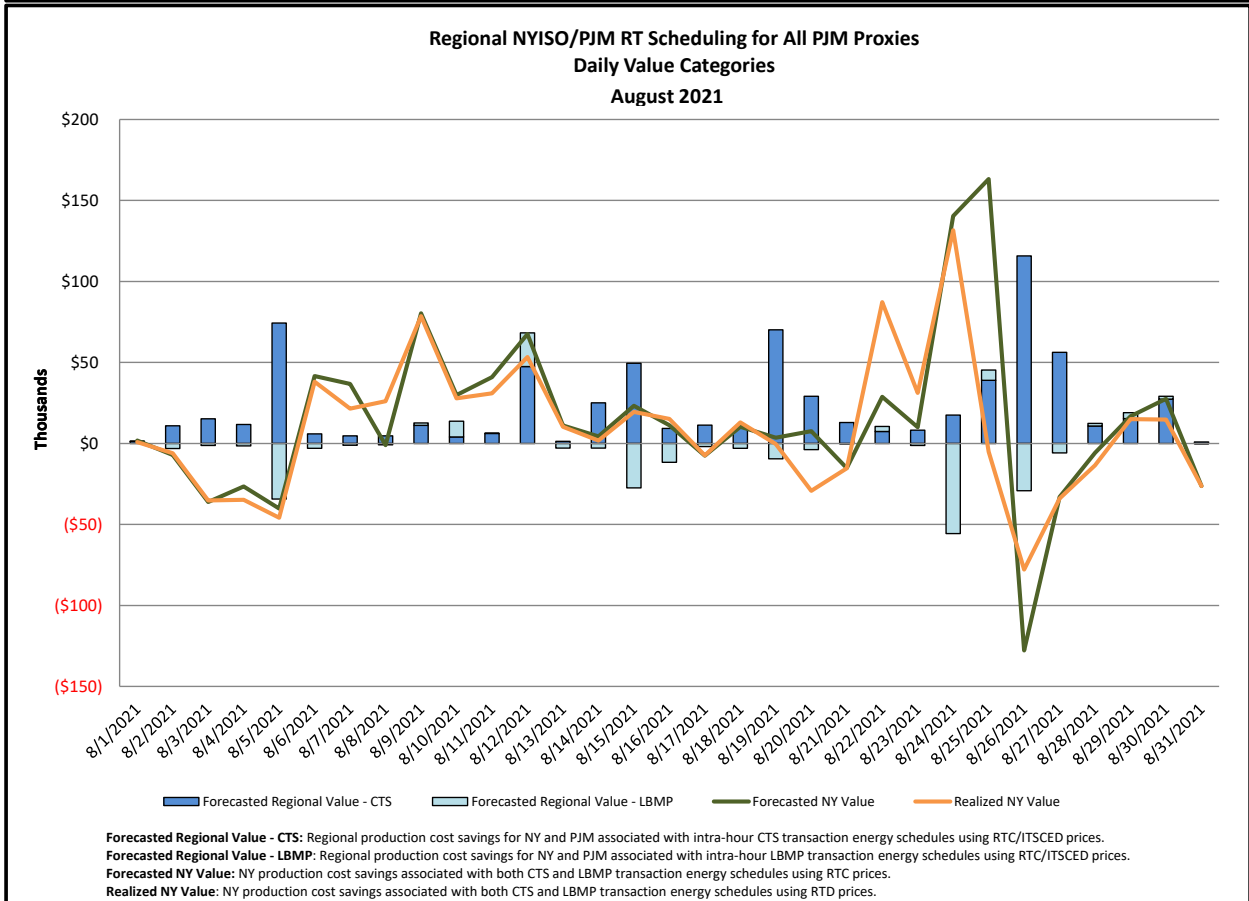
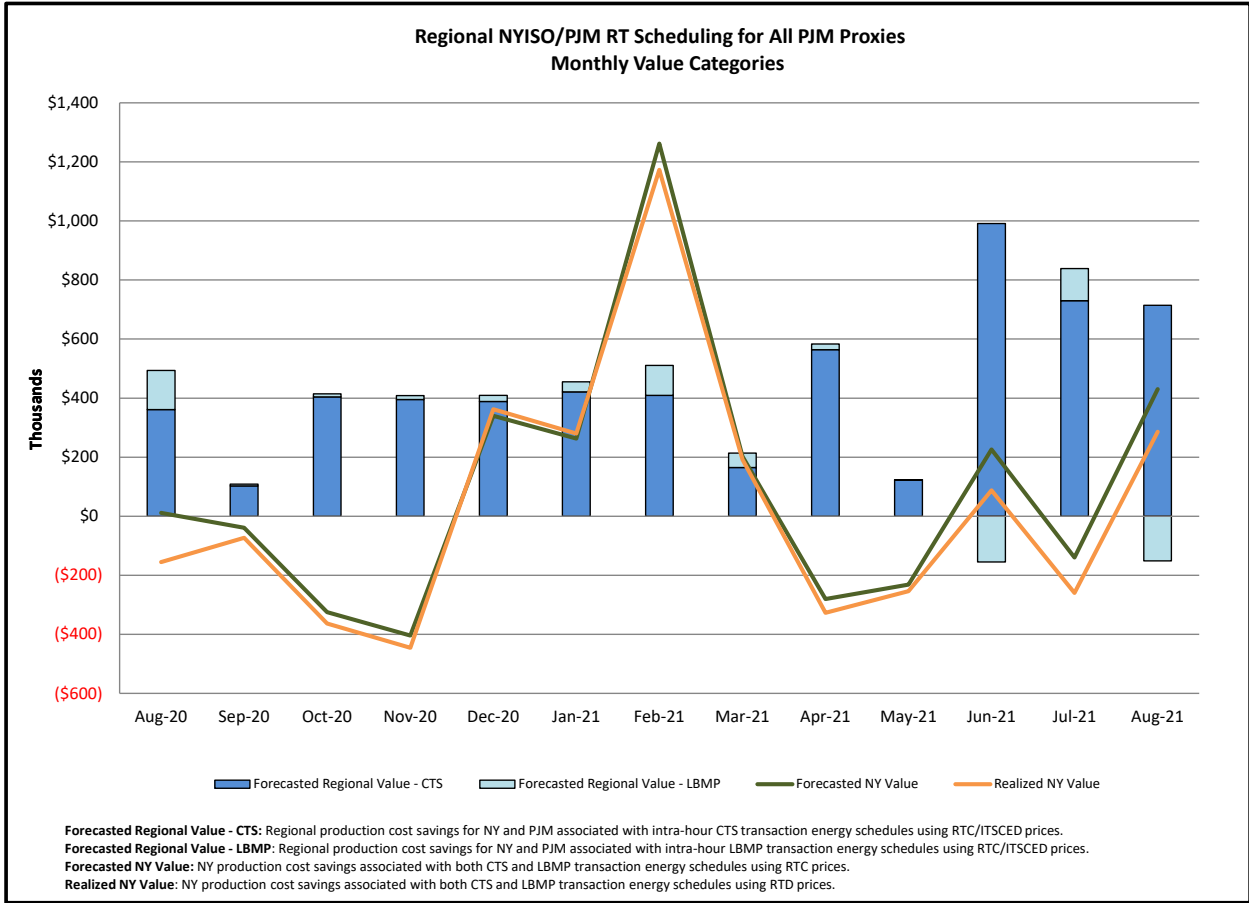


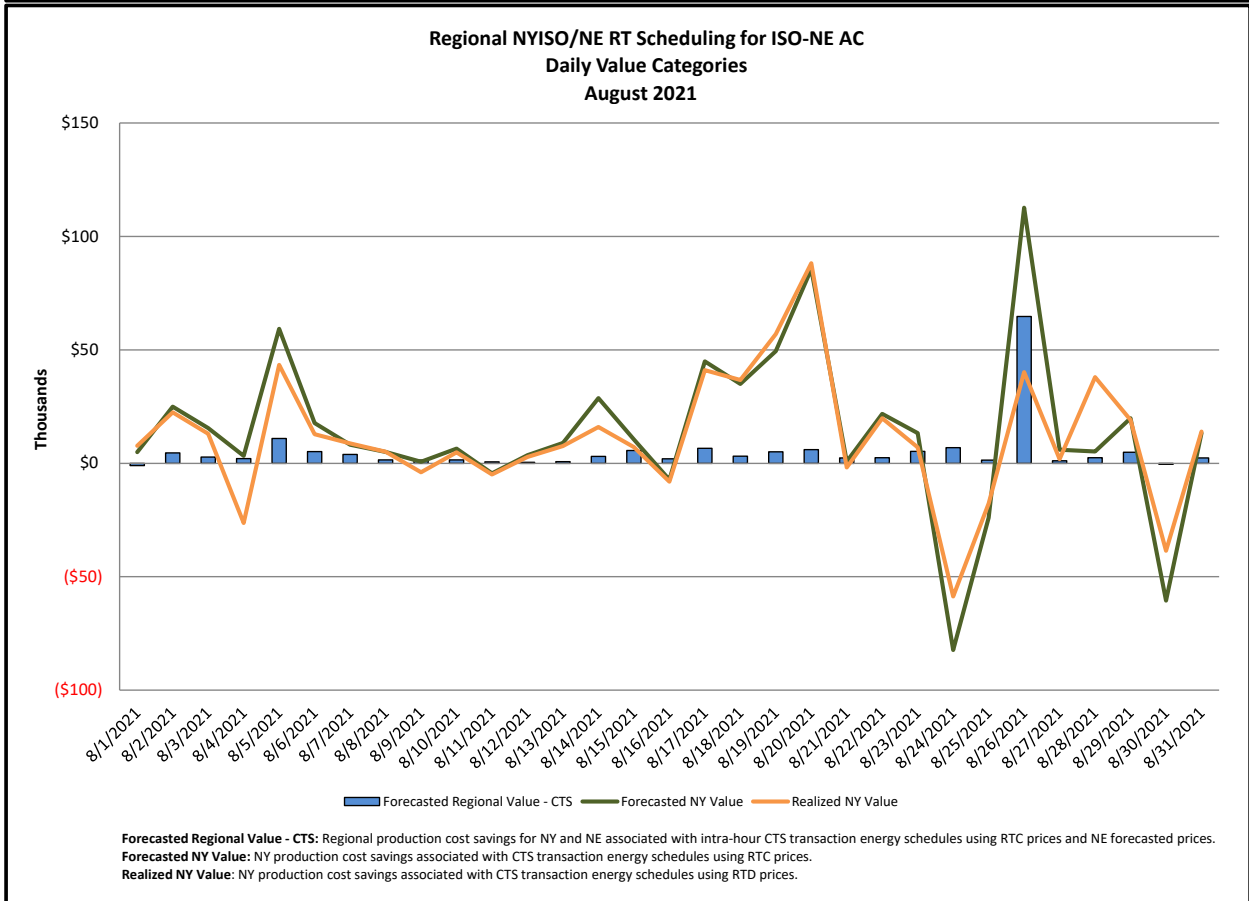
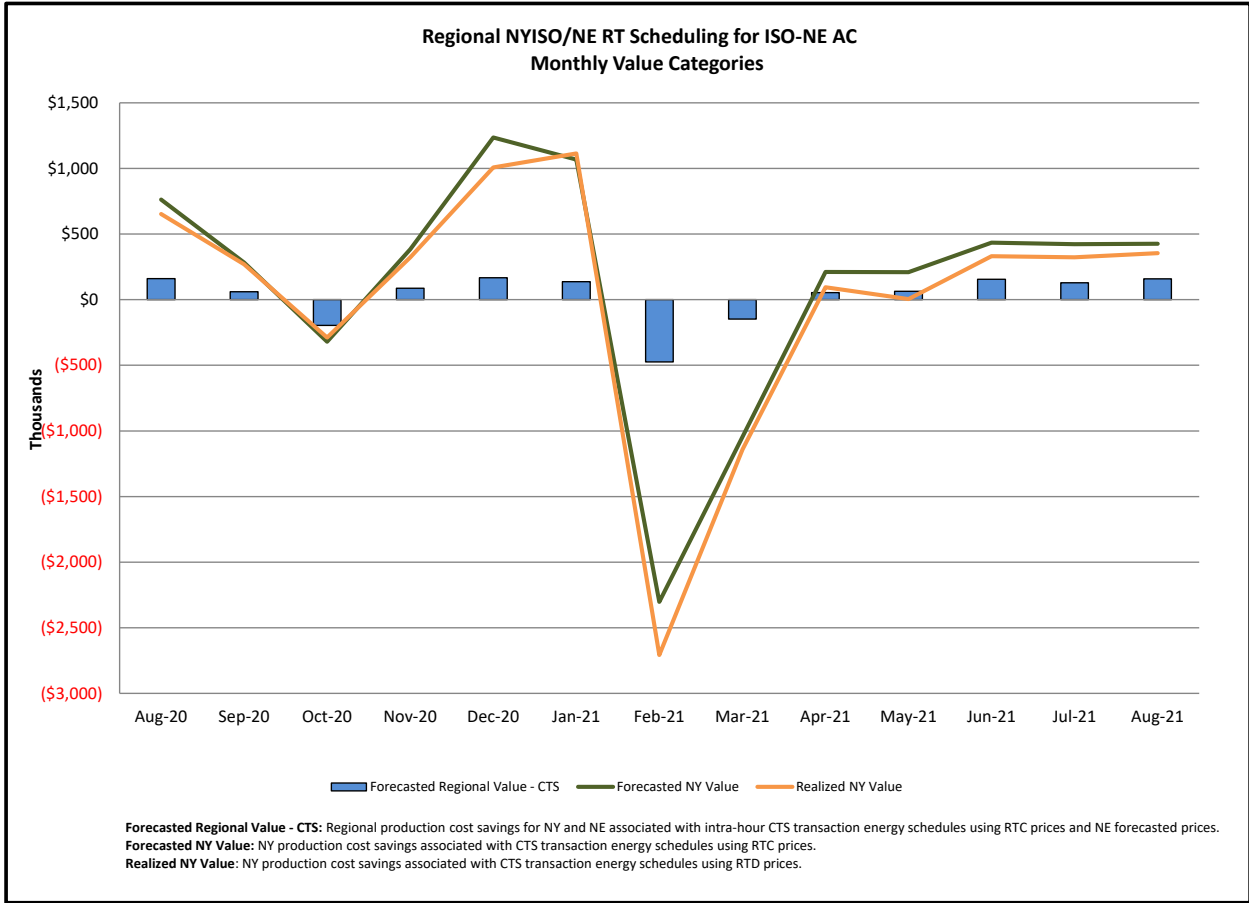
Broader Regional Market Performance Metrics



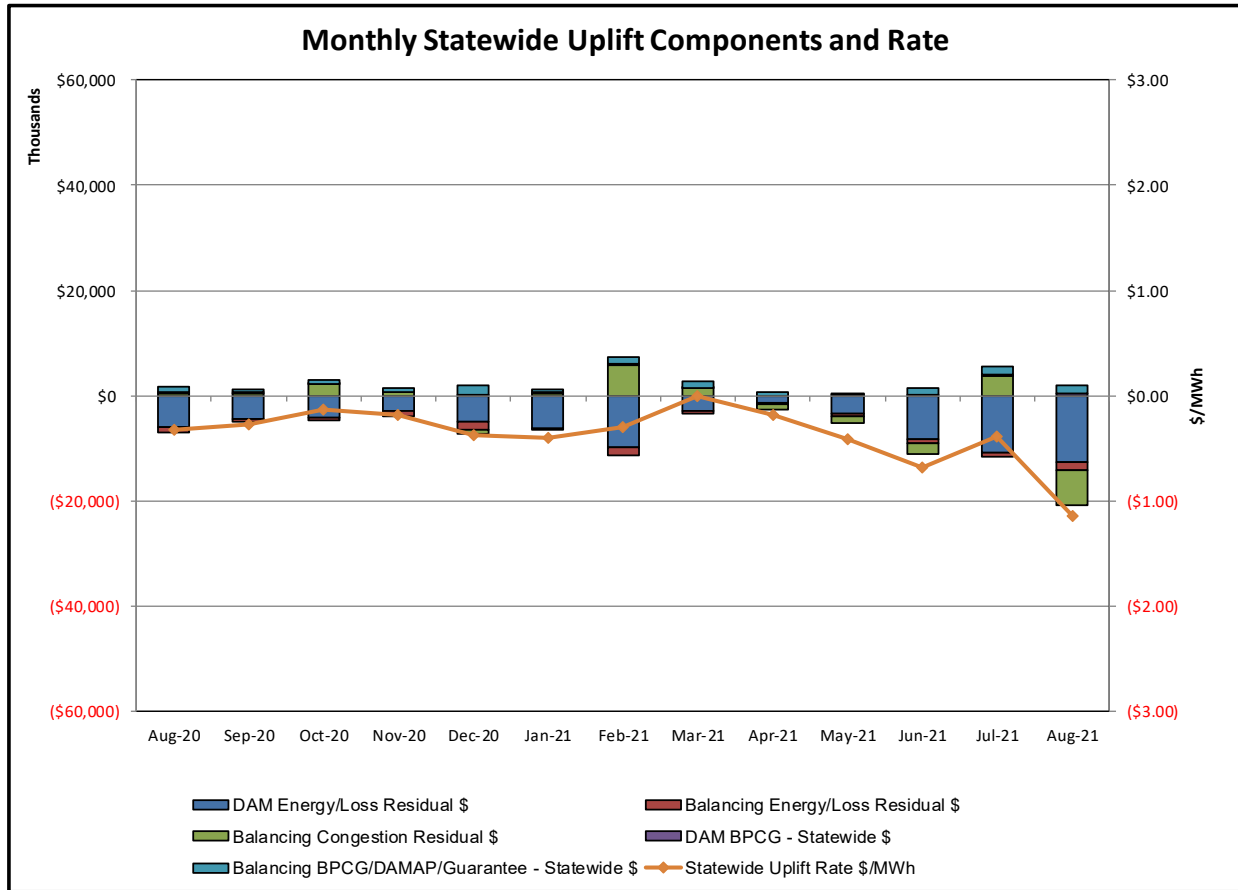
**PAR Interconnection Congestion Coordination**

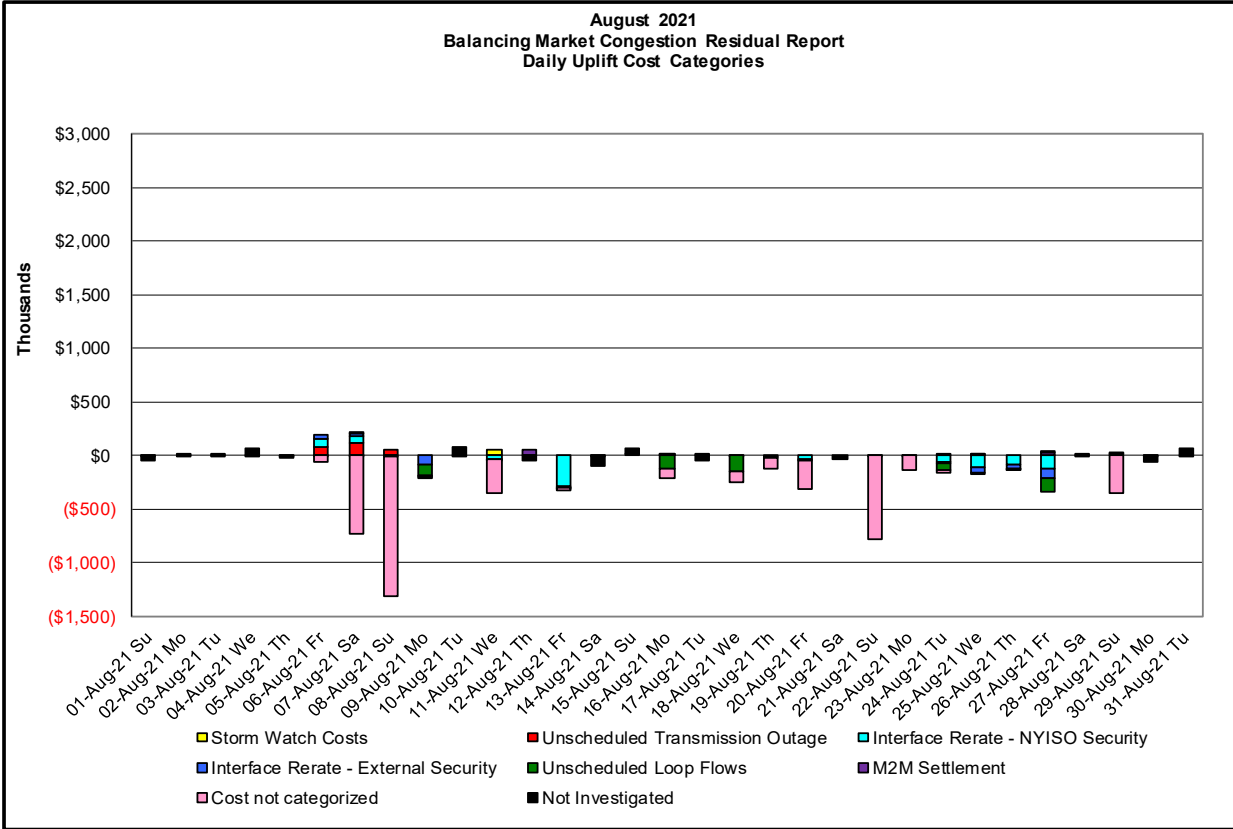
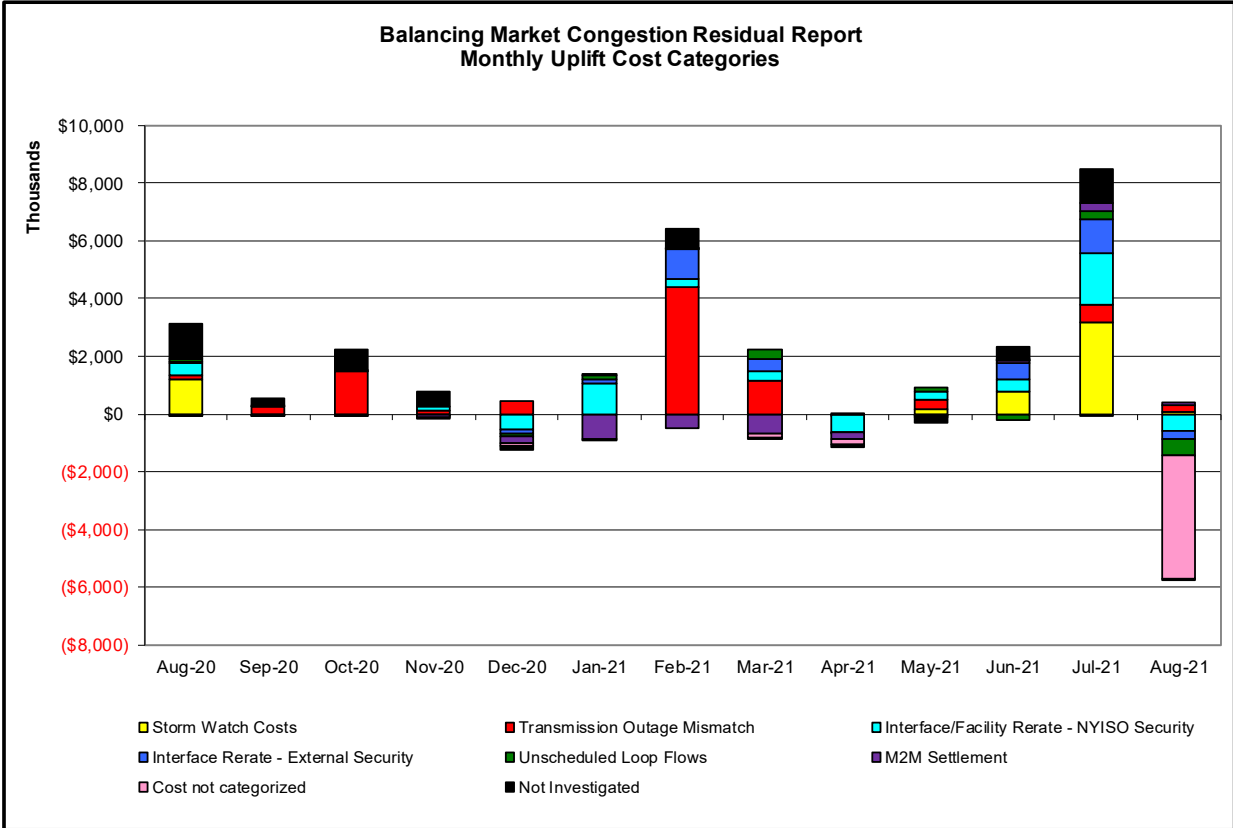
<b><u>Category</u></b>	<b><u>Description</u></b>
 <b>NY</b>	Represents the value NY realizes from Market-to-Market PAR Coordination when experiencing congestion. This is the estimated savings to NY for additional deliveries into NY
 <b>RECO</b>	Represents the value of PJM's obligation to deliver 80% of service to RECO load over Ramapo 5018. This is the estimated reduction in NYCA congestion due to the PJM delivery of RECO over Ramapo 5018.
 <b>M2M PAR Settlement</b>	Market-to-Market PAR Coordination settlement on coordinated flowgates. Through April 2017 this value was included in the NY and RECO categories. The positive sign convention indicates settlement to NY while the negative indicates settlement to PJM.





Market Performance Metrics





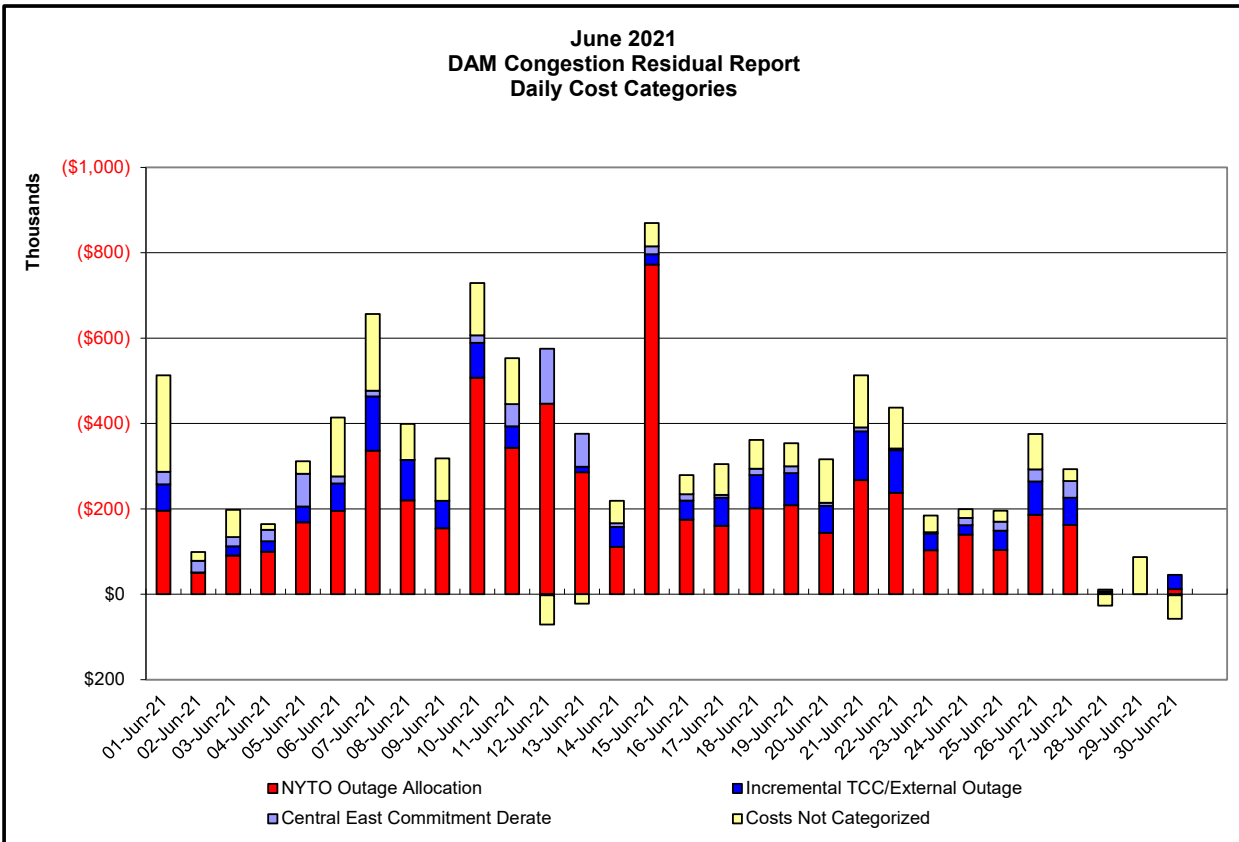
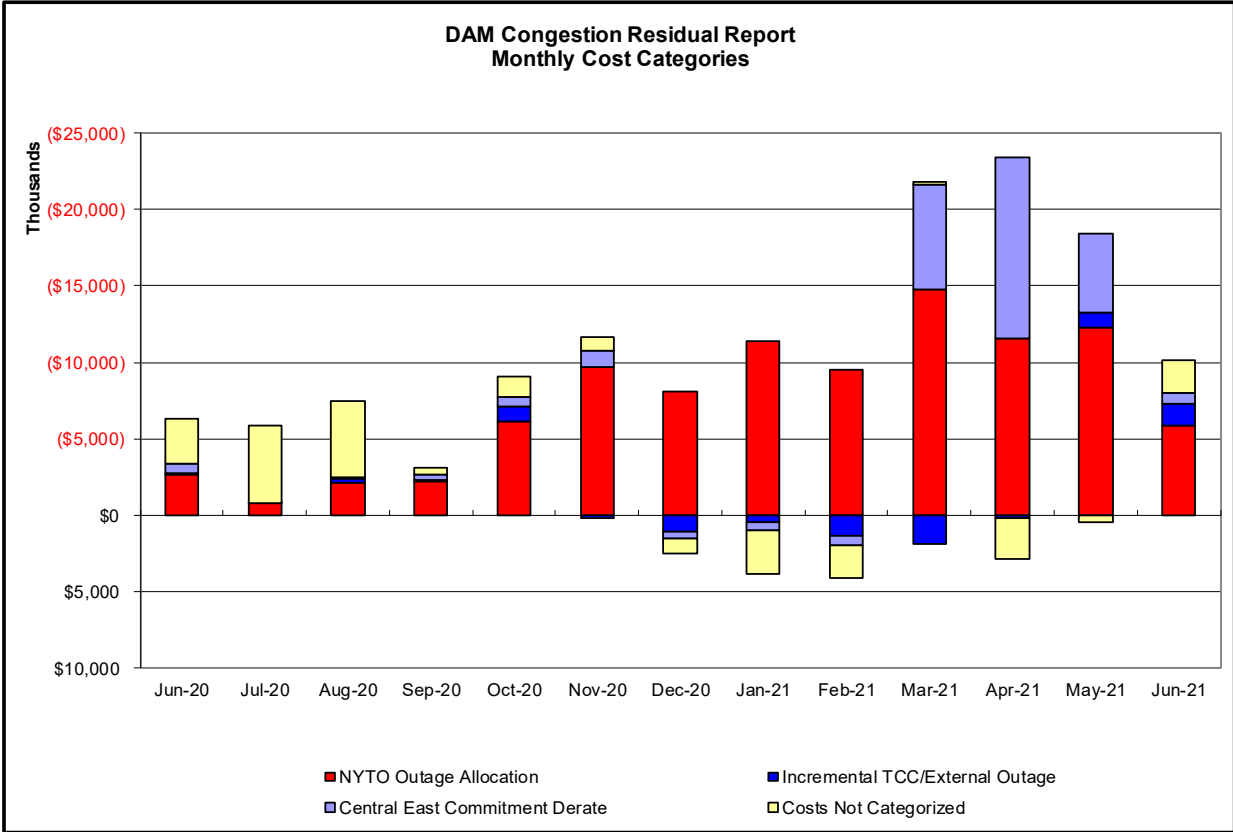
Event	Description	August Dates
	Derate Central East	16
	Derate Coned-LIPA	6,7
	Derate Gownaus-Greenwood 138kV (#42231)	26
	Derate MottHaven-Dunwoodie 345kV (#71) for I/o MottHaven-Dunwoodie 345kV (#72)	24,27
	Derate Niagara-Packard 115kV (#191)	20
	Derate Niagara-Packard 115kV (#193) for I/o Niagara-Packard 115kV (#194)	20
	Derate STA 56 - STA 89 115kV (#25) I/o SIN:MORT-STA 56-PANNELL 24	29
	Forced outage Sprainbrook-East Garden City 345kV (#Y49)	6-8
	HQ_CHAT-NY Scheduling Limit	6,9,24-27
	IESO_AC DNI Ramp Limit	11,20,25,26,29
	IESO_AC-NY Scheduling Limit	8
	Lake Erie Circulation, DAM-RTM exceeds +/-125MW; Central East	16,18
	Lake Erie Circulation, DAM-RTM exceeds +/-125MW; West	7,9,13,16,18,24,25,27
	NE_AC DNI Ramp Limit	6,26
	NE_AC-NY Scheduling Limit	6,18,19
	NE_NNC1385-NY Scheduling Limit	6,7,26,27
	NYCA DNI Ramp Limit	6,19,20,25,26,29
	PJM_AC-NY Scheduling Limit	9,20,26
	Thunder Storm Alert, Buchanan North 345/138kV (#TA5)	11
	Uprate Astoria West-HellGate 138kV (#24051)	26
	Uprate East 179th Street -HellGate 138kV (#15055)	13,16,24-27
	Uprate Freshkills-Willow Brook 138kV (#29211)	7,16
	Uprate Freshkills-Willow Brook 138kV (#29212)	11,13,19,20,24-27
	Uprate Goethals-Gowanus 345kV (#25)	11,19,20
	Uprate Goethals-Gowanus 345kV (#26)	11,19,20
	Uprate Gowanus-Greenwood 138kV (#42231)	13
	Uprate Gowanus-Greenwood 138kV (#42232)	13
	Uprate Gowanus-Greenwood 138kV (#42232) for I/o SCB:GOWANUS(2):41&42231&R4	13,26
	Uprate Gowanus-Greenwood 138kV (#42232) for I/o TWR:GOETHALS 22 & 21	13
	Uprate Northport-Pligrim 138kV (#678) for I/o Northport-Pligrim 138kV (#679)	13,27
	Uprate Northport-Pligrim 138kV (#679) for I/o Northport-Pligrim 138kV (#677)	27

### Real-Time Balancing Market Congestion Residual (Uplift Cost) Categories

Category	Cost Assignment	Events Types	Event Examples
Storm Watch	Zone J	Thunderstorm Alert (TSA)	TSA Activations
Transmission Outage Mismatch	Market-wide	Changes in DAM to RTM transfers related to transmission outage mismatch	Forced Line Outage, Unit AVR Outages, Early Line Return from Outage
Interface/Facility Rerate - NYISO Security	Market-wide	Changes in DAM to RTM transfers not related to transmission outage	Interface/Facility Rerates due to RTM voltages
Interface Rerate - External Security	Market-wide	Changes in DAM to RTM transfers related to External Control Area Security Events	TLR Events, External Transaction Curtailments
Unscheduled Loop Flows	Market-wide	Changes in DAM to RTM unscheduled loop flows impacting NYISO Interface transmission constraints	DAM to RTM Lake Erie Loop Flows exceeding +/- 125 MW
M2M Settlement	Market-wide	Settlement result inclusive of coordinated redispatch and Ramapo flowgates	

#### Monthly Balancing Market Congestion Report Assumptions/Notes

- 1) Storm Watch Costs are identified as daily total uplift costs
- 2) Days with a value of BMCR less M2M Settlement of \$100K/HR, shortfall of \$200K/Day or more, or surplus of \$100K/Day or more are investigated.
- 3) Uplift costs associated with multiple event types are apportioned equally by hour





**Day-Ahead Market Congestion Residual Categories**

<u>Category</u>	<u>Cost Assignment</u>	<u>Events Types</u>	<u>Event Examples</u>
NYTO Outage Allocation	Responsible TO	Direct allocation to NYTO's responsible for transmission equipment status change.	DAM scheduled outage for equipment modeled in-service for the TCC Auction.
Incremental TCC/External Outage Impacts	All TO by Monthly Allocation Factor	Allocation associated with transmission equipment status change caused by change in status of external equipment or change in status of equipment associated with Incremental TCC.	Tie line required out-of-service by TO of neighboring control area.
Central East Commitment Derate	All TO by Monthly Allocation Factor	Reductions in the DAM Central East_VC limit as compared to the TCC Auction limit, which are not associated with transmission line outages.	

