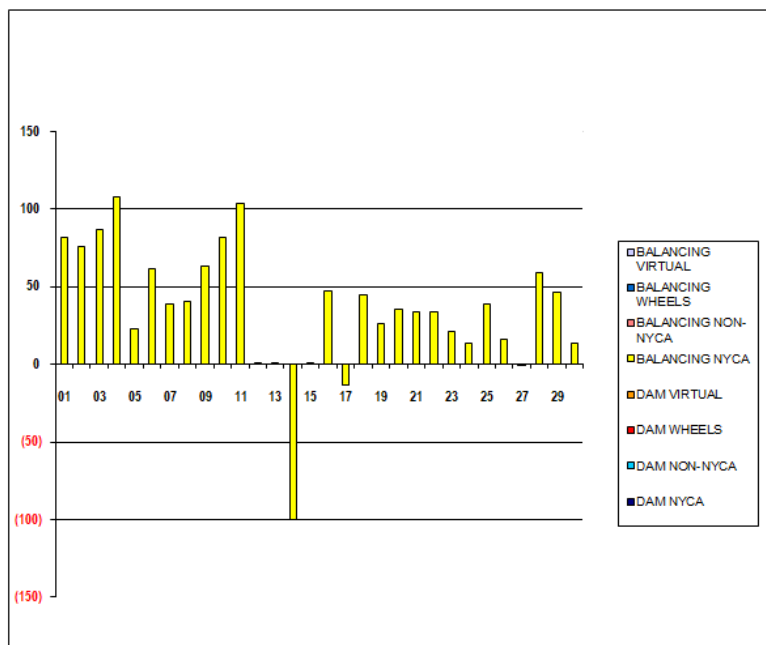


SETTLEMENTS REPORT
 April 2021 Settlement Adjustment
 September 8, 2021

Settlement Adjustment – Market Supply Delta Analysis

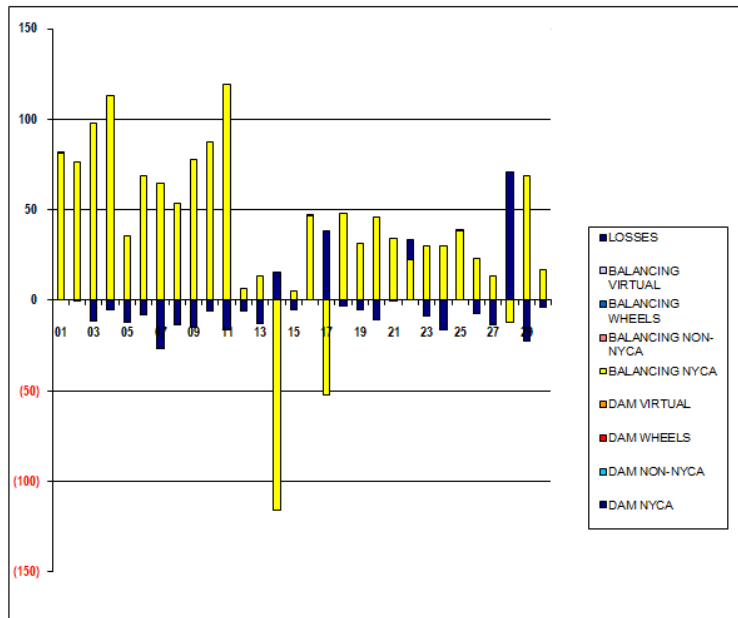
	MONDAY	TUESDAY	WEDNESDAY	THURSDAY	FRIDAY	SATURDAY	SUNDAY
				1	2	3	4
DAM NYCA				0	0	0	0
DAM NON-NYCA				0	0	0	0
DAM WHEELS				0	0	0	0
DAM VIRTUAL				0	0	0	0
BALANCING NYCA				81	76	87	108
BALANCING NON-NYCA				0	0	0	0
BALANCING WHEELS				0	0	0	0
BALANCING VIRTUAL				0	0	0	0
	5	6	7	8	9	10	11
DAM NYCA	0	0	0	0	0	0	0
DAM NON-NYCA	0	0	0	0	0	0	0
DAM WHEELS	0	0	0	0	0	0	0
DAM VIRTUAL	0	0	0	0	0	0	0
BALANCING NYCA	23	61	38	40	63	81	103
BALANCING NON-NYCA	0	0	0	0	0	0	0
BALANCING WHEELS	0	0	0	0	0	0	0
BALANCING VIRTUAL	0	0	0	0	0	0	0
	12	13	14	15	16	17	18
DAM NYCA	0	0	0	0	0	0	0
DAM NON-NYCA	0	0	0	0	0	0	0
DAM WHEELS	0	0	0	0	0	0	0
DAM VIRTUAL	0	0	0	0	0	0	0
BALANCING NYCA	0	1	(100)	0	47	(13)	45
BALANCING NON-NYCA	0	0	0	0	0	0	0
BALANCING WHEELS	0	0	0	0	0	0	0
BALANCING VIRTUAL	0	0	0	0	0	0	0
	19	20	21	22	23	24	25
DAM NYCA	0	0	0	0	0	0	0
DAM NON-NYCA	0	0	0	0	0	0	0
DAM WHEELS	0	0	0	0	0	0	0
DAM VIRTUAL	0	0	0	0	0	0	0
BALANCING NYCA	26	36	34	34	21	13	39
BALANCING NON-NYCA	0	0	0	0	0	0	0
BALANCING WHEELS	0	0	0	0	0	0	0
BALANCING VIRTUAL	0	0	0	0	0	0	0
	26	27	28	29	30		
DAM NYCA	0	0	0	0	0		
DAM NON-NYCA	0	0	0	0	0		
DAM WHEELS	0	0	0	0	0		
DAM VIRTUAL	0	0	0	0	0		
BALANCING NYCA	16	(0)	59	46	13		
BALANCING NON-NYCA	0	0	0	0	0		
BALANCING WHEELS	0	0	0	0	0		
BALANCING VIRTUAL	0	0	0	0	0		



SETTLEMENTS REPORT
 April 2021 Settlement Adjustment
 September 8, 2021

Settlement Adjustment – Market Withdrawals Delta Analysis

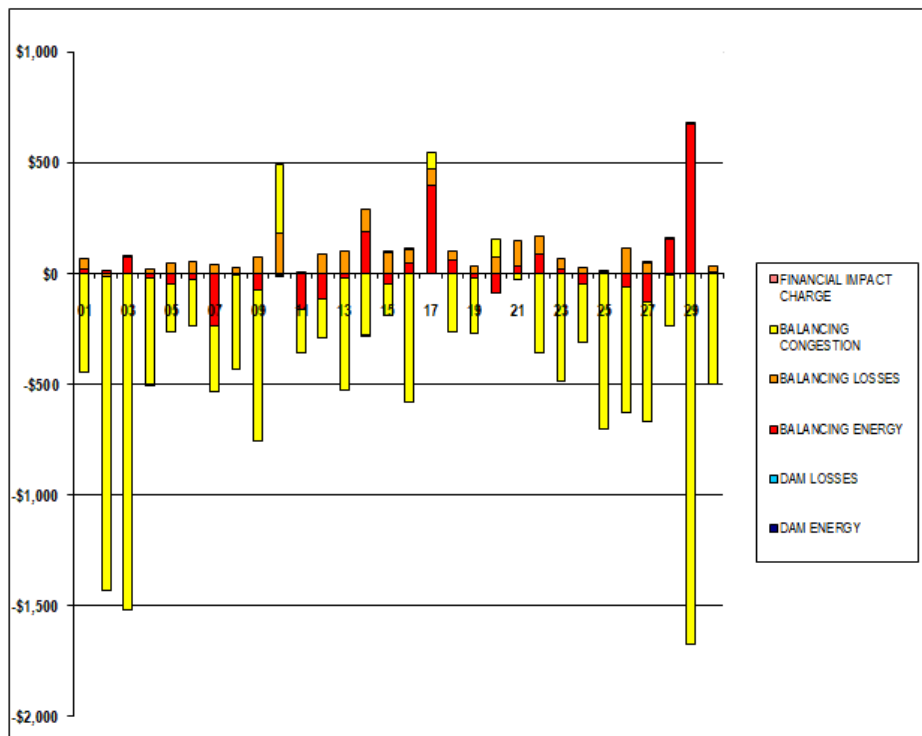
	MONDAY	TUESDAY	WEDNESDAY	THURSDAY	FRIDAY	SATURDAY	SUNDAY
				1	2	3	4
DAM NYCA				0	0	0	0
DAM NON-NYCA				0	0	0	0
DAM WHEELS				0	0	0	0
DAM VIRTUAL				0	0	0	0
BALANCING NYCA				82	76	98	113
BALANCING NON-NYCA				0	0	0	0
BALANCING WHEELS				0	0	0	0
BALANCING VIRTUAL				0	0	0	0
UFELLOSSES				0	(1)	(11)	(5)
	5	6	7	8	9	10	11
DAM NYCA	0	0	0	0	0	0	0
DAM NON-NYCA	0	0	0	0	0	0	0
DAM WHEELS	0	0	0	0	0	0	0
DAM VIRTUAL	0	0	0	0	0	0	0
BALANCING NYCA	35	69	65	53	77	87	119
BALANCING NON-NYCA	0	0	0	0	0	0	0
BALANCING WHEELS	0	0	0	0	0	0	0
BALANCING VIRTUAL	0	0	0	0	0	0	0
UFELLOSSES	(12)	(8)	(26)	(13)	(15)	(6)	(16)
	12	13	14	15	16	17	18
DAM NYCA	0	0	0	0	0	0	0
DAM NON-NYCA	0	0	0	0	0	0	0
DAM WHEELS	0	0	0	0	0	0	0
DAM VIRTUAL	0	0	0	0	0	0	0
BALANCING NYCA	6	13	(116)	5	47	(52)	48
BALANCING NON-NYCA	0	0	0	0	0	0	0
BALANCING WHEELS	0	0	0	0	0	0	0
BALANCING VIRTUAL	0	0	0	0	0	0	0
UFELLOSSES	(9)	(13)	16	(5)	0	38	(3)
	19	20	21	22	23	24	25
DAM NYCA	0	0	0	0	0	0	0
DAM NON-NYCA	0	0	0	0	0	0	0
DAM WHEELS	0	0	0	0	0	0	0
DAM VIRTUAL	0	0	0	0	0	0	0
BALANCING NYCA	31	46	34	22	30	30	39
BALANCING NON-NYCA	0	0	0	0	0	0	0
BALANCING WHEELS	0	0	0	0	0	0	0
BALANCING VIRTUAL	0	0	0	0	0	0	0
UFELLOSSES	(5)	(10)	(1)	11	(9)	(17)	0
	26	27	28	29	30		
DAM NYCA	0	0	0	0	0		
DAM NON-NYCA	0	0	0	0	0		
DAM WHEELS	0	0	0	0	0		
DAM VIRTUAL	0	0	0	0	0		
BALANCING NYCA	23	13	(12)	89	17		
BALANCING NON-NYCA	0	0	0	0	0		
BALANCING WHEELS	0	0	0	0	0		
BALANCING VIRTUAL	0	0	0	0	0		
UFELLOSSES	(7)	(14)	71	(22)	(4)		



SETTLEMENTS REPORT
 April 2021 Settlement Adjustment
 September 8, 2021

Settlement Adjustment – Market Residuals Delta Analysis

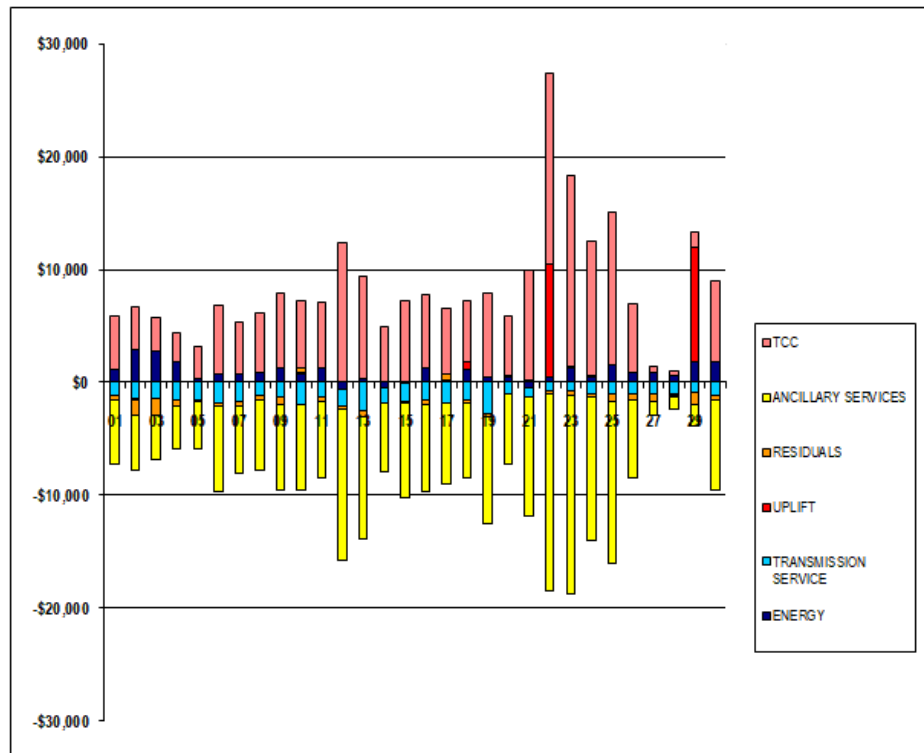
	MONDAY	TUESDAY	WEDNESDAY	THURSDAY	FRIDAY	SATURDAY	SUNDAY
				1	2	3	4
DAM ENERGY				\$0.00	\$0.00	\$0.01	\$0.00
DAM LOSSES				\$0.00	\$0.00	\$0.00	\$0.00
BALANCING ENERGY				\$17.99	\$12.00	\$71.27	(\$19.99)
BALANCING LOSSES				\$47.72	(\$12.26)	\$8.82	\$16.89
BALANCING CONGESTION				(\$442.69)	(\$1,416.52)	(\$1,517.63)	(\$481.77)
FINANCIAL IMPACT CHARGE				\$0.00	\$0.00	\$0.00	(\$0.06)
	5	6	7	8	9	10	11
DAM ENERGY	(\$0.01)	\$0.00	(\$0.01)	\$0.01	(\$0.01)	\$0.00	\$0.00
DAM LOSSES	\$0.00	\$0.01	\$0.00	\$0.00	(\$0.01)	\$0.00	\$0.00
BALANCING ENERGY	(\$46.60)	(\$27.31)	(\$233.96)	(\$8.47)	(\$77.73)	(\$9.57)	(\$160.78)
BALANCING LOSSES	\$47.78	\$55.40	\$37.08	\$28.89	\$71.45	\$179.38	\$0.16
BALANCING CONGESTION	(\$215.71)	(\$206.89)	(\$301.17)	(\$426.00)	(\$580.90)	\$311.10	(\$195.67)
FINANCIAL IMPACT CHARGE	\$0.00	\$0.00	\$0.00	\$0.00	\$0.00	(\$0.03)	\$0.00
	12	13	14	15	16	17	18
DAM ENERGY	\$0.00	\$0.00	\$0.00	\$0.00	\$0.00	\$0.01	(\$0.01)
DAM LOSSES	\$0.01	\$0.00	\$0.00	\$0.00	\$0.00	\$0.00	\$0.00
BALANCING ENERGY	(\$118.16)	(\$22.52)	\$186.37	(\$48.12)	\$47.74	\$398.02	\$57.19
BALANCING LOSSES	\$84.57	\$99.66	\$102.75	\$96.62	\$59.34	\$74.43	\$44.34
BALANCING CONGESTION	(\$170.44)	(\$504.65)	(\$277.36)	(\$139.16)	(\$580.63)	\$74.54	(\$264.34)
FINANCIAL IMPACT CHARGE	\$0.00	\$0.00	(\$0.01)	\$0.01	\$0.10	\$0.00	\$0.00
	19	20	21	22	23	24	25
DAM ENERGY	\$0.00	\$0.00	(\$0.01)	\$0.00	\$0.00	\$0.00	\$0.00
DAM LOSSES	\$0.00	\$0.01	\$0.00	(\$0.01)	(\$0.01)	(\$0.01)	\$0.00
BALANCING ENERGY	(\$22.54)	(\$91.21)	\$31.29	\$86.44	\$20.78	(\$47.34)	\$3.03
BALANCING LOSSES	\$33.25	\$71.49	\$115.30	\$80.51	\$44.57	\$29.09	\$5.64
BALANCING CONGESTION	(\$247.22)	\$79.94	(\$25.17)	(\$355.75)	(\$484.00)	(\$264.57)	(\$703.09)
FINANCIAL IMPACT CHARGE	\$0.00	\$0.00	\$0.00	\$0.00	\$0.00	\$0.00	\$0.00
	26	27	28	29	30		
DAM ENERGY	\$0.00	\$0.00	\$0.00	\$0.00	(\$0.01)		
DAM LOSSES	\$0.00	(\$0.01)	\$0.00	\$0.00	\$0.01		
BALANCING ENERGY	(\$63.19)	(\$130.95)	\$156.05	\$673.11	\$3.43		
BALANCING LOSSES	\$116.65	\$44.57	(\$6.77)	(\$2.44)	\$30.05		
BALANCING CONGESTION	(\$566.54)	(\$535.95)	(\$229.07)	(\$1,669.02)	(\$502.25)		
FINANCIAL IMPACT CHARGE	\$0.00	\$0.08	\$0.20	\$0.09	\$0.00		



SETTLEMENTS REPORT
 April 2021 Settlement Adjustment
 September 8, 2021

Settlement Adjustment – Market Costs Delta Analysis

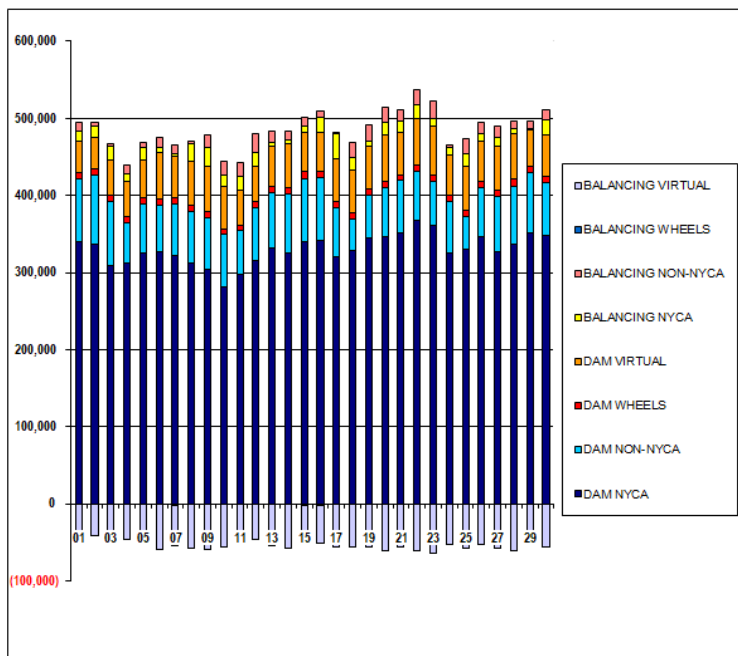
	MONDAY	TUESDAY	WEDNESDAY	THURSDAY	FRIDAY	SATURDAY	SUNDAY
ENERGY				1	2	3	4
TRANSMISSION SERVICE				\$1,155.40	\$2,971.82	\$2,835.87	\$1,785.70
UPLIFT				(\$1,198.19)	(\$1,480.34)	(\$1,427.89)	(\$1,543.05)
RESIDUALS				\$2.91	(\$46.29)	(\$7.85)	(\$3.51)
ANCILLARY SERVICES				(\$376.98)	(\$1,416.78)	(\$1,437.53)	(\$484.93)
TCC				(\$5,673.12)	(\$4,784.38)	(\$3,986.10)	(\$3,834.72)
	5	6	7	8	9	10	11
ENERGY	\$295.90	\$690.91	\$694.39	\$854.33	\$1,224.61	\$803.90	\$1,302.01
TRANSMISSION SERVICE	(\$1,520.68)	(\$1,871.37)	(\$1,660.69)	(\$1,140.06)	(\$1,231.80)	(\$2,012.73)	(\$1,293.67)
UPLIFT	(\$20.21)	(\$1.83)	(\$2.17)	(\$10.43)	\$28.03	\$17.54	(\$1.31)
RESIDUALS	(\$214.54)	(\$178.79)	(\$498.06)	(\$405.57)	(\$687.20)	\$480.88	(\$356.29)
ANCILLARY SERVICES	(\$4,097.17)	(\$7,574.03)	(\$5,891.83)	(\$6,162.99)	(\$7,585.34)	(\$7,468.64)	(\$6,730.98)
TCC	\$2,926.98	\$6,143.94	\$4,612.14	\$5,294.61	\$6,654.93	\$5,983.41	\$5,763.00
	12	13	14	15	16	17	18
ENERGY	(\$636.67)	\$368.17	(\$462.85)	(\$96.71)	\$1,237.52	\$247.94	\$1,118.45
TRANSMISSION SERVICE	(\$1,466.49)	(\$2,529.78)	(\$1,354.86)	(\$1,621.05)	(\$1,523.96)	(\$1,795.59)	(\$1,616.01)
UPLIFT	\$23.16	(\$21.91)	(\$35.78)	\$39.74	(\$5.80)	(\$0.59)	\$672.44
RESIDUALS	(\$204.02)	(\$427.51)	\$11.75	(\$90.65)	(\$473.45)	\$547.00	(\$162.82)
ANCILLARY SERVICES	(\$13,474.37)	(\$10,918.38)	(\$6,049.70)	(\$8,447.85)	(\$7,661.10)	(\$7,147.92)	(\$6,725.16)
TCC	\$12,327.15	\$8,961.15	\$4,931.49	\$7,194.18	\$6,476.58	\$5,722.26	\$5,479.56
	19	20	21	22	23	24	25
ENERGY	\$538.34	\$488.52	(\$534.99)	\$443.53	\$1,349.88	\$540.21	\$1,609.91
TRANSMISSION SERVICE	(\$2,742.47)	(\$1,016.10)	(\$738.28)	(\$775.45)	(\$774.59)	(\$990.03)	(\$1,049.71)
UPLIFT	(\$1.03)	(\$19.70)	\$21.83	\$10,030.17	\$101.26	\$1.06	(\$0.20)
RESIDUALS	(\$236.51)	\$60.23	\$121.41	(\$188.81)	(\$418.66)	(\$282.83)	(\$694.42)
ANCILLARY SERVICES	(\$9,477.53)	(\$6,146.67)	(\$10,596.92)	(\$17,518.17)	(\$17,485.41)	(\$12,768.80)	(\$14,229.97)
TCC	\$7,359.30	\$5,323.38	\$9,769.23	\$16,919.28	\$16,892.73	\$12,010.44	\$13,429.83
	26	27	28	29	30		
ENERGY	\$841.61	\$943.24	\$640.90	\$1,856.26	\$1,880.59		
TRANSMISSION SERVICE	(\$1,021.37)	(\$1,029.57)	(\$973.60)	(\$923.64)	(\$1,083.58)		
UPLIFT	(\$1.87)	\$6.20	(\$178.11)	\$10,095.79	(\$0.20)		
RESIDUALS	(\$513.08)	(\$622.26)	(\$79.59)	(\$998.26)	(\$468.77)		
ANCILLARY SERVICES	(\$6,951.62)	(\$1,241.86)	(\$1,077.86)	(\$1,994.46)	(\$7,929.58)		
TCC	\$6,143.76	\$444.27	\$316.20	\$1,301.52	\$7,093.38		



SETTLEMENTS REPORT
 April 2021 Settlement Adjustment
 September 8, 2021

Initial Settlement – Market Supply Analysis

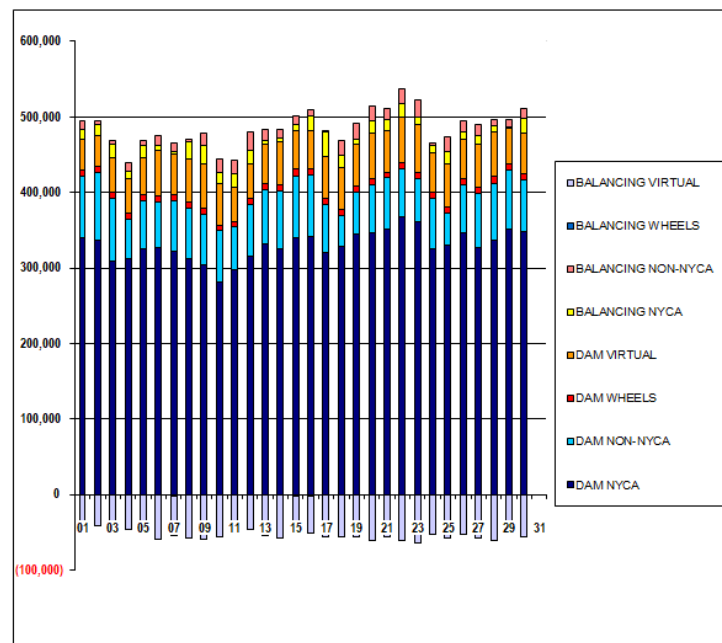
	MONDAY	TUESDAY	WEDNESDAY	THURSDAY	FRIDAY	SATURDAY	SUNDAY
DAM NYCA				1	2	3	4
DAM NON-NYCA				340,567	336,429	308,163	312,958
DAM WHEELS				80,776	69,462	83,537	51,640
DAM VIRTUAL				7,744	8,169	7,908	7,245
BALANCING NYCA				41,798	40,452	45,961	45,640
BALANCING NON-NYCA				11,861	15,355	18,275	10,009
BALANCING WHEELS				12,095	5,197	4,047	12,237
BALANCING VIRTUAL				(544)	(969)	(708)	(45)
				(41,798)	(40,452)	(45,961)	(45,640)
	5	6	7	8	9	10	11
DAM NYCA	325,497	326,636	322,448	312,640	304,202	281,551	297,966
DAM NON-NYCA	63,802	61,090	65,876	66,683	66,736	67,413	56,222
DAM WHEELS	8,319	8,343	9,358	8,324	7,508	7,568	7,248
DAM VIRTUAL	48,820	58,858	52,477	56,707	59,432	55,016	45,059
BALANCING NYCA	15,368	6,806	4,537	22,183	24,856	14,274	18,347
BALANCING NON-NYCA	7,478	12,804	11,390	4,256	15,666	18,368	17,411
BALANCING WHEELS	(1,119)	(1,143)	(2,158)	(1,124)	(308)	(368)	(48)
BALANCING VIRTUAL	(48,820)	(58,858)	(52,477)	(56,707)	(59,432)	(55,016)	(45,059)
	12	13	14	15	16	17	18
DAM NYCA	314,732	332,430	325,621	340,458	341,665	319,988	327,747
DAM NON-NYCA	68,674	70,380	76,340	81,304	81,414	63,490	41,028
DAM WHEELS	8,088	8,084	7,957	8,808	8,888	8,688	8,330
DAM VIRTUAL	45,737	53,160	56,600	50,881	49,144	54,961	55,423
BALANCING NYCA	18,849	3,992	4,825	8,914	20,518	32,495	17,073
BALANCING NON-NYCA	24,680	15,311	11,896	11,379	7,162	2,582	18,816
BALANCING WHEELS	(889)	(894)	(757)	(1,608)	(1,688)	(1,488)	(1,130)
BALANCING VIRTUAL	(45,737)	(53,160)	(56,600)	(50,881)	(49,144)	(54,961)	(55,423)
	19	20	21	22	23	24	25
DAM NYCA	344,719	346,004	350,973	367,131	361,477	325,282	330,104
DAM NON-NYCA	55,493	64,336	68,509	64,787	56,148	66,663	42,475
DAM WHEELS	7,800	7,360	7,200	8,260	8,160	8,160	8,418
DAM VIRTUAL	55,774	60,275	55,848	59,202	63,477	52,249	56,921
BALANCING NYCA	5,803	17,527	14,385	18,335	11,201	9,059	15,573
BALANCING NON-NYCA	21,897	18,055	14,346	19,431	22,116	3,439	19,845
BALANCING WHEELS	0	(160)	0	(1,060)	(960)	(960)	(1,218)
BALANCING VIRTUAL	(55,774)	(60,275)	(55,848)	(59,202)	(63,477)	(52,249)	(56,921)
	26	27	28	29	30		
DAM NYCA	346,413	326,649	336,225	350,612	347,989		
DAM NON-NYCA	63,387	72,177	75,820	78,686	67,774		
DAM WHEELS	8,560	8,640	8,640	8,160	8,160		
DAM VIRTUAL	52,225	56,911	59,167	47,074	55,210		
BALANCING NYCA	10,174	10,934	7,563	2,878	16,711		
BALANCING NON-NYCA	13,269	14,630	8,921	8,667	13,295		
BALANCING WHEELS	(1,360)	(1,440)	(1,440)	(960)	(960)		
BALANCING VIRTUAL	(52,225)	(56,911)	(59,167)	(47,074)	(55,210)		



SETTLEMENTS REPORT
 April 2021 Settlement Adjustment
 September 8, 2021

4-Month Settlement Adjustment – Market Supply Analysis

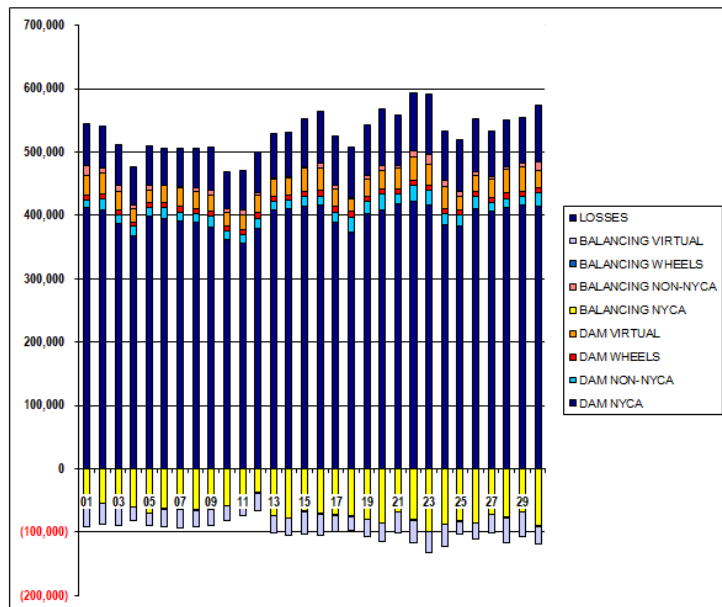
	MONDAY	TUESDAY	WEDNESDAY	THURSDAY	FRIDAY	SATURDAY	SUNDAY
DAM NYCA				1	2	3	4
DAM NON-NYCA				340,567	336,429	308,163	312,958
DAM WHEELS				80,776	89,462	83,537	51,640
DAM VIRTUAL				7,744	8,169	7,908	7,245
BALANCING NYCA				41,798	40,452	45,961	45,640
BALANCING NON-NYCA				11,942	15,430	18,362	10,117
BALANCING WHEELS				12,095	5,197	4,047	12,237
BALANCING VIRTUAL				(544)	(969)	(708)	(45)
				(41,798)	(40,452)	(45,961)	(45,640)
	5	6	7	8	9	10	11
DAM NYCA	325,497	326,636	322,448	312,640	304,202	281,551	297,966
DAM NON-NYCA	63,802	61,090	65,876	66,683	66,736	67,413	56,222
DAM WHEELS	8,319	8,343	9,358	8,324	7,508	7,568	7,248
DAM VIRTUAL	48,820	58,858	52,477	56,707	59,432	55,016	45,059
BALANCING NYCA	15,411	6,888	4,575	22,223	24,918	14,355	18,451
BALANCING NON-NYCA	7,478	12,604	11,390	4,256	15,666	18,368	17,411
BALANCING WHEELS	(1,119)	(1,143)	(2,158)	(1,124)	(308)	(368)	(48)
BALANCING VIRTUAL	(48,820)	(58,858)	(52,477)	(56,707)	(59,432)	(55,016)	(45,059)
	12	13	14	15	16	17	18
DAM NYCA	314,732	332,430	325,621	340,458	341,665	319,988	327,747
DAM NON-NYCA	68,674	70,380	76,340	81,304	81,414	63,490	41,028
DAM WHEELS	8,098	8,094	7,957	8,808	8,888	8,688	8,330
DAM VIRTUAL	45,737	53,160	56,600	50,881	49,144	54,961	55,423
BALANCING NYCA	18,849	3,992	4,725	8,914	20,565	32,482	17,118
BALANCING NON-NYCA	24,680	15,311	11,896	11,379	7,162	2,582	18,816
BALANCING WHEELS	(898)	(884)	(757)	(1,808)	(1,888)	(1,488)	(1,130)
BALANCING VIRTUAL	(45,737)	(53,160)	(56,600)	(50,881)	(49,144)	(54,961)	(55,423)
	19	20	21	22	23	24	25
DAM NYCA	344,719	346,004	350,973	367,131	361,477	325,282	330,104
DAM NON-NYCA	55,493	64,336	68,509	64,787	56,148	66,663	42,475
DAM WHEELS	7,800	7,360	7,200	8,260	8,160	8,160	8,418
DAM VIRTUAL	55,774	60,275	55,848	59,202	63,477	52,249	56,921
BALANCING NYCA	5,829	17,563	14,419	18,369	11,222	9,072	15,612
BALANCING NON-NYCA	21,897	18,055	14,346	19,431	22,116	3,439	19,845
BALANCING WHEELS	0	(160)	0	(1,060)	(960)	(960)	(1,210)
BALANCING VIRTUAL	(55,774)	(60,275)	(55,848)	(59,202)	(63,477)	(52,249)	(56,921)
	26	27	28	29	30		
DAM NYCA	346,413	326,649	336,225	350,612	347,989		
DAM NON-NYCA	63,387	72,177	75,820	78,686	67,774		
DAM WHEELS	8,560	8,640	8,640	8,160	8,160		
DAM VIRTUAL	52,225	56,911	59,167	47,074	55,210		
BALANCING NYCA	10,190	10,933	7,622	2,924	18,724		
BALANCING NON-NYCA	13,269	14,630	8,921	8,667	13,295		
BALANCING WHEELS	(1,360)	(1,440)	(1,440)	(960)	(960)		
BALANCING VIRTUAL	(52,225)	(56,911)	(59,167)	(47,074)	(55,210)		



SETTLEMENTS REPORT
 April 2021 Settlement Adjustment
 September 8, 2021

Initial Settlement – Market Withdrawals Analysis

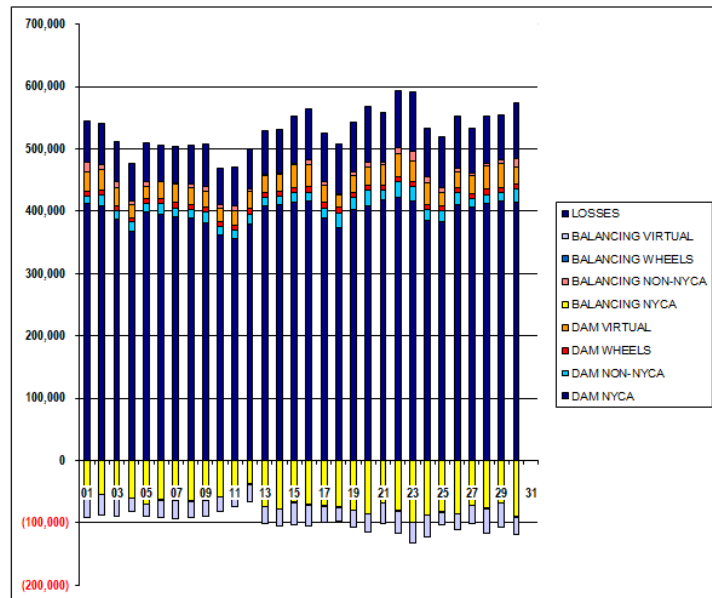
	MONDAY	TUESDAY	WEDNESDAY	THURSDAY	FRIDAY	SATURDAY	SUNDAY
				1	2	3	4
DAM NYCA				411,975	408,337	386,763	367,494
DAM NON-NYCA				11,698	17,683	14,116	15,237
DAM WHEELS				7,744	8,169	7,908	7,245
DAM VIRTUAL				31,680	33,084	29,707	21,231
BALANCING NYCA				(59,624)	(53,598)	(59,450)	(61,129)
BALANCING NON-NYCA				15,261	7,287	8,853	4,275
BALANCING WHEELS				(544)	(969)	(708)	(45)
BALANCING VIRTUAL				(31,680)	(33,084)	(29,707)	(21,231)
UFELLOSSES				65,969	66,733	63,740	60,967
	5	6	7	8	9	10	11
DAM NYCA	397,869	394,865	391,537	388,405	382,042	361,856	355,332
DAM NON-NYCA	13,736	17,733	13,758	14,643	16,391	14,429	13,912
DAM WHEELS	8,319	8,343	9,358	8,324	7,508	7,568	7,248
DAM VIRTUAL	19,433	26,763	28,418	25,832	25,614	21,757	24,699
BALANCING NYCA	(69,807)	(62,825)	(62,819)	(65,003)	(63,282)	(58,752)	(48,587)
BALANCING NON-NYCA	7,751	(1,050)	2,645	5,542	8,638	4,835	6,632
BALANCING WHEELS	(1,119)	(1,143)	(2,158)	(1,124)	(308)	(368)	(48)
BALANCING VIRTUAL	(19,433)	(26,763)	(28,418)	(25,832)	(25,614)	(21,757)	(24,699)
UFELLOSSES	62,616	58,612	59,130	62,174	67,670	59,249	62,657
	12	13	14	15	16	17	18
DAM NYCA	380,313	409,408	410,232	414,711	415,491	389,341	373,648
DAM NON-NYCA	15,383	12,796	12,948	14,883	15,388	16,241	23,667
DAM WHEELS	8,088	8,084	7,957	8,808	8,888	8,688	8,330
DAM VIRTUAL	27,182	26,530	27,980	35,401	33,983	26,442	21,095
BALANCING NYCA	(37,363)	(73,309)	(76,921)	(65,771)	(70,228)	(72,134)	(74,169)
BALANCING NON-NYCA	4,904	1,333	1,294	2,558	8,592	7,511	2,203
BALANCING WHEELS	(888)	(884)	(757)	(1,608)	(1,688)	(1,488)	(1,130)
BALANCING VIRTUAL	(27,182)	(26,530)	(27,980)	(35,401)	(33,983)	(25,442)	(21,095)
UFELLOSSES	63,698	71,885	71,129	75,675	81,515	77,597	79,315
	19	20	21	22	23	24	25
DAM NYCA	402,608	408,257	417,639	422,655	416,764	385,635	384,125
DAM NON-NYCA	19,076	26,140	16,730	24,334	22,365	17,366	16,746
DAM WHEELS	7,800	7,360	7,200	8,280	8,160	8,160	8,418
DAM VIRTUAL	27,943	29,026	33,196	36,308	33,608	33,756	29,904
BALANCING NYCA	(79,807)	(85,937)	(68,844)	(79,948)	(98,511)	(87,404)	(81,683)
BALANCING NON-NYCA	4,953	8,754	4,456	10,698	15,413	9,602	8,092
BALANCING WHEELS	0	(160)	0	(1,090)	(960)	(960)	(1,218)
BALANCING VIRTUAL	(27,943)	(29,026)	(33,196)	(36,308)	(33,608)	(33,756)	(29,904)
UFELLOSSES	81,081	88,708	78,233	91,944	94,912	79,244	80,717
	26	27	28	29	30		
DAM NYCA	411,052	407,163	412,686	416,592	413,608		
DAM NON-NYCA	18,139	12,804	13,486	13,187	21,313		
DAM WHEELS	8,560	8,640	8,640	8,160	8,160		
DAM VIRTUAL	24,718	28,925	37,573	38,846	28,119		
BALANCING NYCA	(85,073)	(70,894)	(76,759)	(67,387)	(90,042)		
BALANCING NON-NYCA	6,362	2,644	4,647	4,740	12,618		
BALANCING WHEELS	(1,360)	(1,440)	(1,440)	(960)	(960)		
BALANCING VIRTUAL	(24,718)	(28,925)	(37,573)	(38,846)	(28,119)		
UFELLOSSES	62,763	72,772	74,468	73,710	90,273		



SETTLEMENTS REPORT
 April 2021 Settlement Adjustment
 September 8, 2021

4-Month Settlement Adjustment – Market Withdrawals Analysis

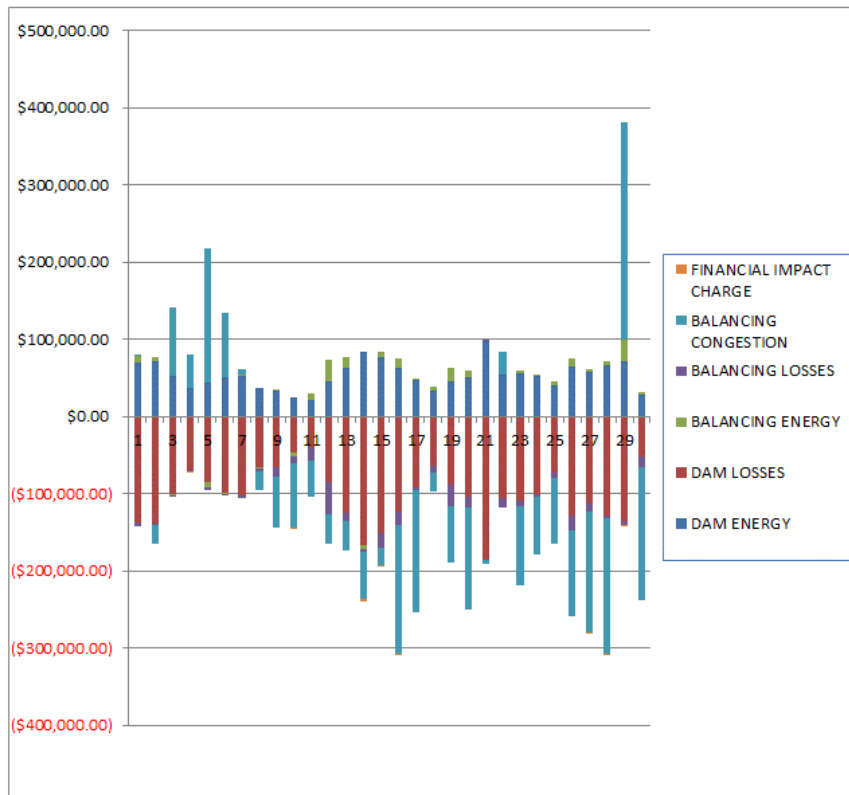
	MONDAY	TUESDAY	WEDNESDAY	THURSDAY	FRIDAY	SATURDAY	SUNDAY
				1	2	3	4
DAM NYCA				411,975	408,337	386,763	367,494
DAM NON-NYCA				11,698	17,683	14,116	15,237
DAM WHEELS				7,744	8,169	7,908	7,245
DAM VIRTUAL				31,680	33,084	29,707	21,231
BALANCING NYCA				(59,542)	(53,522)	(59,352)	(61,016)
BALANCING NON-NYCA				15,261	7,287	8,853	4,275
BALANCING WHEELS				(544)	(969)	(708)	(45)
BALANCING VIRTUAL				(31,680)	(33,084)	(29,707)	(21,231)
UFE/LOSSES				65,989	66,733	63,729	60,962
	5	6	7	8	9	10	11
DAM NYCA	397,869	394,865	391,537	388,405	382,042	361,856	355,332
DAM NON-NYCA	13,736	17,733	13,758	14,643	16,391	14,429	13,912
DAM WHEELS	8,319	8,343	9,358	8,324	7,508	7,568	7,248
DAM VIRTUAL	19,433	26,763	28,418	25,832	25,614	21,757	24,699
BALANCING NYCA	(69,771)	(62,755)	(62,754)	(64,949)	(63,204)	(58,675)	(48,467)
BALANCING NON-NYCA	7,751	(1,050)	2,645	5,542	8,638	4,835	6,632
BALANCING WHEELS	(1,119)	(1,143)	(2,150)	(1,124)	(308)	(360)	(48)
BALANCING VIRTUAL	(19,433)	(26,763)	(28,418)	(25,832)	(25,614)	(21,757)	(24,699)
UFE/LOSSES	62,604	58,604	59,104	62,161	67,655	59,244	62,641
	12	13	14	15	16	17	18
DAM NYCA	380,313	409,408	410,232	414,711	415,491	389,341	373,648
DAM NON-NYCA	15,383	12,796	12,948	14,883	15,388	16,241	23,667
DAM WHEELS	8,088	8,084	7,957	8,808	8,888	8,688	8,330
DAM VIRTUAL	27,182	26,530	27,980	35,401	33,983	26,442	21,095
BALANCING NYCA	(37,356)	(73,295)	(77,036)	(65,766)	(70,181)	(72,186)	(74,120)
BALANCING NON-NYCA	4,904	1,333	1,294	2,558	8,592	7,511	2,203
BALANCING WHEELS	(888)	(884)	(757)	(1,608)	(1,688)	(1,488)	(1,130)
BALANCING VIRTUAL	(27,182)	(26,530)	(27,980)	(35,401)	(33,983)	(26,442)	(21,095)
UFE/LOSSES	63,691	71,872	71,144	75,670	81,516	77,635	79,311
	19	20	21	22	23	24	25
DAM NYCA	402,608	408,257	417,639	422,655	416,764	385,635	384,125
DAM NON-NYCA	19,076	26,140	16,730	24,334	22,365	17,366	16,746
DAM WHEELS	7,800	7,360	7,200	8,290	8,160	8,160	8,418
DAM VIRTUAL	27,943	29,026	33,198	36,308	33,608	33,756	20,904
BALANCING NYCA	(79,775)	(85,891)	(68,810)	(79,926)	(98,481)	(87,374)	(81,645)
BALANCING NON-NYCA	4,953	8,754	4,456	10,698	15,413	9,602	8,092
BALANCING WHEELS	0	(180)	0	(1,060)	(960)	(960)	(1,218)
BALANCING VIRTUAL	(27,943)	(29,026)	(33,198)	(36,308)	(33,608)	(33,756)	(20,904)
UFE/LOSSES	81,076	88,697	78,232	91,955	94,903	79,227	80,718
	26	27	28	29	30		
DAM NYCA	411,052	407,163	412,686	416,592	413,608		
DAM NON-NYCA	18,139	12,804	13,486	13,187	21,313		
DAM WHEELS	8,560	8,640	8,640	8,160	8,160		
DAM VIRTUAL	24,718	28,925	37,573	38,846	28,119		
BALANCING NYCA	(85,050)	(70,981)	(76,771)	(67,318)	(90,026)		
BALANCING NON-NYCA	6,362	2,644	4,647	4,740	12,618		
BALANCING WHEELS	(1,360)	(1,440)	(1,440)	(960)	(960)		
BALANCING VIRTUAL	(24,718)	(28,925)	(37,573)	(38,846)	(28,119)		
UFE/LOSSES	82,755	72,758	74,539	73,688	90,269		



SETTLEMENTS REPORT
 April 2021 Settlement Adjustment
 September 8, 2021

Initial Settlement – Market Residuals Analysis

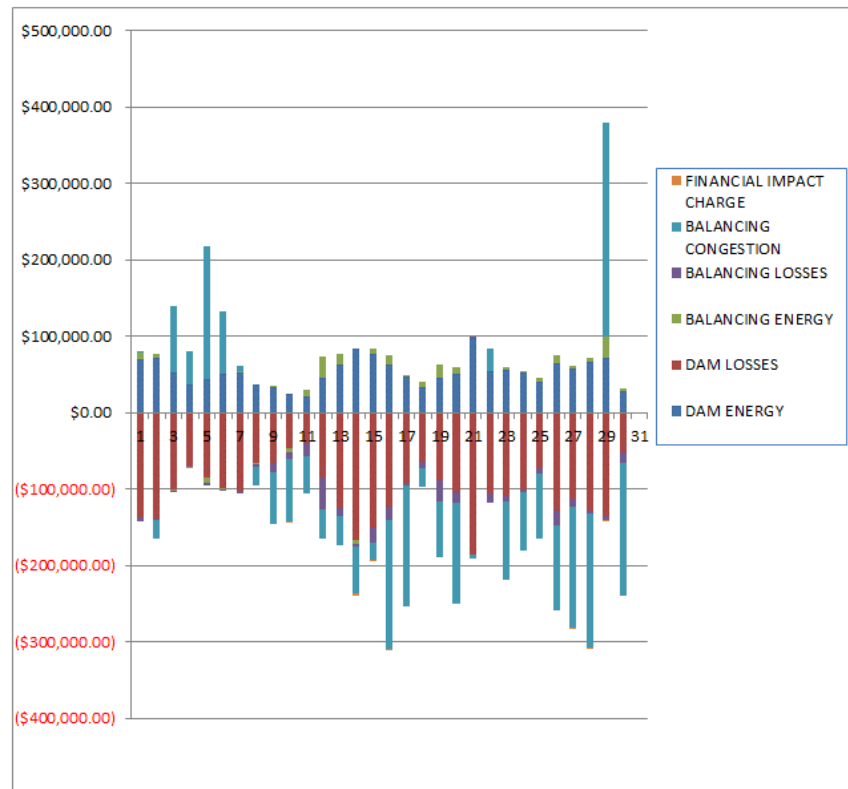
	MONDAY	TUESDAY	WEDNESDAY	THURSDAY	FRIDAY	SATURDAY	SUNDAY
				1	2	3	4
DAM ENERGY				\$70,523.41	\$72,215.36	\$53,194.02	\$36,896.80
DAM LOSSES				(\$137,256.26)	(\$139,617.71)	(\$100,921.31)	(\$68,953.35)
BALANCING ENERGY				\$8,739.67	\$3,804.47	(\$774.24)	\$756.93
BALANCING LOSSES				(\$5,800.79)	(\$432.98)	(\$1,881.40)	(\$2,166.34)
BALANCING CONGESTION				\$657.62	(\$24,102.41)	\$88,015.10	\$42,860.15
FINANCIAL IMPACT CHARGE				\$0.00	\$0.00	\$0.00	(\$912.04)
	5	6	7	8	9	10	11
DAM ENERGY	\$43,514.22	\$51,429.21	\$51,693.23	\$36,345.16	\$33,504.44	\$25,297.00	\$21,240.01
DAM LOSSES	(\$85,710.34)	(\$99,544.76)	(\$102,716.54)	(\$65,563.35)	(\$64,906.88)	(\$46,593.29)	(\$39,621.64)
BALANCING ENERGY	(\$6,404.80)	(\$782.23)	\$2,700.78	(\$1,347.99)	\$1,604.63	(\$5,103.29)	\$8,480.80
BALANCING LOSSES	(\$3,436.70)	(\$607.86)	(\$3,100.91)	(\$3,472.89)	(\$13,486.02)	(\$8,358.16)	(\$18,065.64)
BALANCING CONGESTION	\$174,440.69	\$81,986.78	\$6,915.85	(\$24,630.04)	(\$66,139.43)	(\$83,542.53)	(\$47,170.47)
FINANCIAL IMPACT CHARGE	\$0.00	\$0.00	\$0.00	\$0.00	\$0.00	(\$419.25)	\$0.00
	12	13	14	15	16	17	18
DAM ENERGY	\$45,069.73	\$63,721.58	\$84,022.40	\$77,296.67	\$62,156.06	\$47,184.96	\$33,511.08
DAM LOSSES	(\$85,447.76)	(\$124,812.60)	(\$167,416.80)	(\$150,850.37)	(\$123,509.05)	(\$91,175.67)	(\$63,728.20)
BALANCING ENERGY	\$28,754.64	\$12,530.14	(\$4,721.95)	\$5,638.28	\$13,097.60	\$180.53	\$5,848.49
BALANCING LOSSES	(\$41,064.69)	(\$10,302.88)	(\$3,410.56)	(\$18,634.62)	(\$16,577.10)	(\$4,783.72)	(\$8,548.70)
BALANCING CONGESTION	(\$38,653.44)	(\$38,800.78)	(\$59,768.49)	(\$22,696.52)	(\$167,899.36)	(\$157,652.64)	(\$24,787.62)
FINANCIAL IMPACT CHARGE	\$0.00	\$0.00	(\$3,449.77)	(\$9.29)	(\$278.19)	\$0.00	\$0.00
	19	20	21	22	23	24	25
DAM ENERGY	\$45,633.11	\$51,402.04	\$97,138.22	\$53,701.54	\$55,754.27	\$51,828.25	\$39,452.68
DAM LOSSES	(\$88,710.99)	(\$103,395.51)	(\$185,595.66)	(\$106,247.57)	(\$109,573.36)	(\$101,375.97)	(\$73,169.17)
BALANCING ENERGY	\$16,422.88	\$8,245.08	\$317.04	(\$214.59)	\$2,898.03	\$1,019.10	\$5,757.77
BALANCING LOSSES	(\$27,839.00)	(\$15,333.70)	\$243.29	(\$12,245.16)	(\$6,357.29)	(\$3,063.71)	(\$7,238.67)
BALANCING CONGESTION	(\$72,464.65)	(\$131,220.07)	(\$4,609.90)	\$30,731.16	(\$102,495.45)	(\$74,983.50)	(\$83,969.71)
FINANCIAL IMPACT CHARGE	\$0.00	\$0.00	\$0.00	\$0.00	\$0.00	\$0.00	\$0.00
	26	27	28	29	30		
DAM ENERGY	\$64,897.18	\$58,171.41	\$66,708.90	\$71,109.08	\$28,282.17		
DAM LOSSES	(\$127,536.77)	(\$112,466.50)	(\$128,318.96)	(\$135,708.18)	(\$52,542.39)		
BALANCING ENERGY	\$10,089.09	\$2,444.58	\$4,133.94	\$27,892.20	\$3,662.12		
BALANCING LOSSES	(\$19,795.38)	(\$11,163.10)	(\$4,186.91)	(\$5,498.11)	(\$13,565.77)		
BALANCING CONGESTION	(\$111,107.61)	(\$156,705.26)	(\$174,438.40)	\$282,094.72	(\$172,590.25)		
FINANCIAL IMPACT CHARGE	\$0.00	(\$426.05)	(\$155.20)	(\$25.04)	\$0.00		



SETTLEMENTS REPORT
 April 2021 Settlement Adjustment
 September 8, 2021

4-Month Settlement Adjustment – Market Residuals Analysis

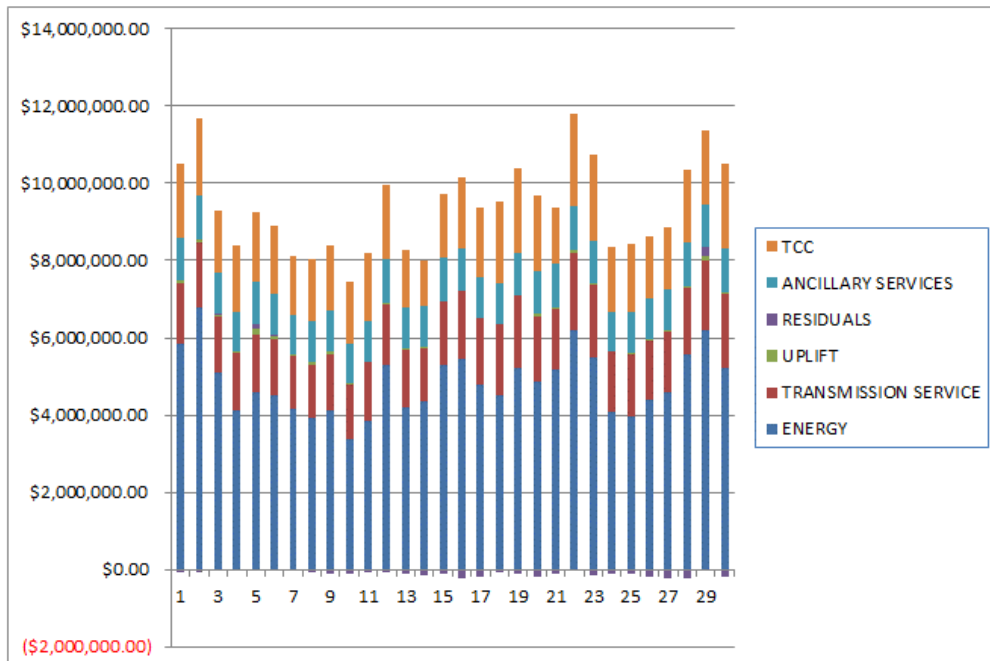
	MONDAY	TUESDAY	WEDNESDAY	THURSDAY	FRIDAY	SATURDAY	SUNDAY
				1	2	3	4
DAM ENERGY				\$70,523.41	\$72,215.36	\$53,194.03	\$36,896.80
DAM LOSSES				(\$137,256.26)	(\$139,617.71)	(\$100,921.31)	(\$68,953.35)
BALANCING ENERGY				\$8,757.66	\$3,816.47	(\$702.97)	\$736.94
BALANCING LOSSES				(\$5,753.07)	(\$445.24)	(\$1,872.58)	(\$2,149.45)
BALANCING CONGESTION				\$214.93	(\$25,518.93)	\$86,497.47	\$42,378.38
FINANCIAL IMPACT CHARGE				\$0.00	\$0.00	\$0.00	(\$912.10)
	5	6	7	8	9	10	11
DAM ENERGY	\$43,514.21	\$51,429.21	\$51,693.22	\$36,345.17	\$33,504.43	\$25,297.00	\$21,240.01
DAM LOSSES	(\$85,710.34)	(\$99,544.75)	(\$102,716.54)	(\$65,563.35)	(\$64,906.89)	(\$46,593.29)	(\$39,621.64)
BALANCING ENERGY	(\$6,451.40)	(\$809.54)	\$2,466.82	(\$1,356.46)	\$1,526.90	(\$5,112.86)	\$8,320.02
BALANCING LOSSES	(\$3,388.92)	(\$552.46)	(\$3,063.83)	(\$3,444.00)	(\$13,414.57)	(\$8,178.78)	(\$18,065.48)
BALANCING CONGESTION	\$174,224.98	\$81,779.89	\$6,614.68	(\$25,056.04)	(\$66,820.33)	(\$83,231.43)	(\$47,366.14)
FINANCIAL IMPACT CHARGE	\$0.00	\$0.00	\$0.00	\$0.00	\$0.00	(\$419.28)	\$0.00
	12	13	14	15	16	17	18
DAM ENERGY	\$45,069.73	\$63,721.58	\$84,022.40	\$77,296.67	\$62,156.06	\$47,184.97	\$33,511.07
DAM LOSSES	(\$85,447.75)	(\$124,812.60)	(\$167,416.80)	(\$150,850.37)	(\$123,509.05)	(\$91,175.67)	(\$63,728.20)
BALANCING ENERGY	\$28,636.48	\$12,507.62	(\$4,535.58)	\$5,590.16	\$13,145.34	\$578.55	\$5,905.68
BALANCING LOSSES	(\$40,980.12)	(\$10,203.22)	(\$3,307.81)	(\$18,538.00)	(\$16,517.76)	(\$4,709.29)	(\$8,504.36)
BALANCING CONGESTION	(\$38,823.88)	(\$39,305.43)	(\$60,045.85)	(\$22,835.68)	(\$168,479.99)	(\$157,578.10)	(\$25,051.96)
FINANCIAL IMPACT CHARGE	\$0.00	\$0.00	(\$3,449.78)	(\$6.25)	(\$278.09)	\$0.00	\$0.00
	19	20	21	22	23	24	25
DAM ENERGY	\$45,633.11	\$51,402.04	\$97,138.21	\$53,701.54	\$55,754.27	\$51,828.25	\$39,452.68
DAM LOSSES	(\$88,710.99)	(\$103,395.50)	(\$185,595.66)	(\$106,247.58)	(\$109,573.37)	(\$101,375.98)	(\$73,169.17)
BALANCING ENERGY	\$16,400.34	\$8,153.87	\$348.33	(\$128.15)	\$2,918.81	\$971.76	\$5,760.80
BALANCING LOSSES	(\$27,805.75)	(\$15,262.21)	\$358.59	(\$12,164.65)	(\$6,312.72)	(\$3,024.62)	(\$7,233.03)
BALANCING CONGESTION	(\$72,711.87)	(\$131,140.13)	(\$4,635.07)	\$30,375.41	(\$102,879.45)	(\$75,248.07)	(\$84,672.80)
FINANCIAL IMPACT CHARGE	\$0.00	\$0.00	\$0.00	\$0.00	\$0.00	\$0.00	\$0.00
	26	27	28	29	30		
DAM ENERGY	\$64,897.18	\$58,171.41	\$66,708.90	\$71,109.08	\$28,282.16		
DAM LOSSES	(\$127,536.77)	(\$112,466.51)	(\$128,318.96)	(\$135,708.16)	(\$52,542.38)		
BALANCING ENERGY	\$10,025.90	\$2,313.63	\$4,289.99	\$28,565.31	\$3,665.55		
BALANCING LOSSES	(\$19,678.73)	(\$11,118.53)	(\$4,193.68)	(\$5,500.55)	(\$13,535.72)		
BALANCING CONGESTION	(\$111,674.15)	(\$157,241.21)	(\$174,667.47)	\$280,425.70	(\$173,092.50)		
FINANCIAL IMPACT CHARGE	\$0.00	(\$425.97)	(\$155.00)	(\$24.95)	\$0.00		



SETTLEMENTS REPORT
 April 2021 Settlement Adjustment
 September 8, 2021

Initial Settlement – Market Costs Analysis

	MONDAY	TUESDAY	WEDNESDAY	THURSDAY	FRIDAY	SATURDAY	SUNDAY
				1	2	3	4
ENERGY				\$5,851,257.65	\$6,794,626.13	\$5,080,707.17	\$4,131,129.92
TRANSMISSION SERVICE				\$1,547,375.73	\$1,675,916.47	\$1,454,237.71	\$1,460,088.75
UPLIFT				\$72,668.43	\$85,041.67	\$57,958.30	\$51,171.45
RESIDUALS				(\$63,136.35)	(\$88,133.27)	\$37,632.17	\$8,482.15
ANCILLARY SERVICES				\$1,109,363.46	\$1,114,612.44	\$1,058,729.34	\$1,019,398.44
TCC				\$1,925,972.70	\$2,004,370.84	\$1,616,631.00	\$1,713,623.67
	5	6	7	8	9	10	11
ENERGY	\$4,582,354.41	\$4,495,431.86	\$4,154,124.42	\$3,912,484.95	\$4,127,943.13	\$3,376,165.78	\$3,854,793.76
TRANSMISSION SERVICE	\$1,514,446.02	\$1,478,960.19	\$1,357,600.30	\$1,396,247.00	\$1,458,813.92	\$1,395,798.24	\$1,508,358.68
UPLIFT	\$148,285.24	\$52,596.42	\$47,734.41	\$54,960.40	\$73,648.39	\$40,853.99	\$3,068.09
RESIDUALS	\$122,403.07	\$32,481.14	(\$44,507.59)	(\$58,669.11)	(\$109,423.26)	(\$118,719.52)	(\$75,136.94)
ANCILLARY SERVICES	\$1,062,662.52	\$1,069,687.46	\$1,041,071.17	\$1,048,905.23	\$1,052,749.73	\$1,021,068.16	\$1,045,650.58
TCC	\$1,826,204.82	\$1,754,835.98	\$1,499,394.41	\$1,608,513.24	\$1,693,597.98	\$1,609,480.05	\$1,794,951.36
	12	13	14	15	16	17	18
ENERGY	\$5,278,536.96	\$4,191,971.78	\$4,373,807.32	\$5,307,137.46	\$5,449,772.60	\$4,787,221.49	\$4,507,861.90
TRANSMISSION SERVICE	\$1,595,102.39	\$1,508,636.86	\$1,370,284.47	\$1,639,496.55	\$1,753,692.88	\$1,715,429.96	\$1,848,880.24
UPLIFT	\$15,524.72	\$7,960.33	\$10,083.91	\$11,730.91	\$14,459.44	\$23,412.75	\$1,592.59
RESIDUALS	(\$91,341.52)	(\$97,664.54)	(\$154,745.17)	(\$109,252.82)	(\$233,010.04)	(\$206,246.54)	(\$57,704.95)
ANCILLARY SERVICES	\$1,136,762.15	\$1,082,256.04	\$1,050,774.04	\$1,107,853.92	\$1,095,192.18	\$1,047,413.73	\$1,068,033.31
TCC	\$1,913,172.98	\$1,490,906.33	\$1,195,572.88	\$1,655,781.17	\$1,825,491.40	\$1,809,168.01	\$2,116,618.82
	19	20	21	22	23	24	25
ENERGY	\$5,199,446.65	\$4,862,798.64	\$5,195,995.47	\$6,182,517.12	\$5,506,881.92	\$4,063,999.41	\$3,974,730.90
TRANSMISSION SERVICE	\$1,898,423.37	\$1,687,413.34	\$1,533,427.33	\$1,994,849.37	\$1,858,173.32	\$1,567,731.55	\$1,613,155.72
UPLIFT	\$6,359.44	\$74,375.18	\$64,404.39	\$78,070.74	\$42,694.20	\$13,427.16	\$1,007.18
RESIDUALS	(\$126,958.65)	(\$190,302.16)	(\$92,507.01)	(\$34,274.62)	(\$159,773.80)	(\$126,565.83)	(\$119,167.10)
ANCILLARY SERVICES	\$1,106,207.94	\$1,103,953.38	\$1,107,720.78	\$1,168,687.74	\$1,118,238.48	\$1,033,902.75	\$1,091,977.85
TCC	\$2,173,470.84	\$1,935,826.56	\$1,485,108.91	\$2,358,544.59	\$2,220,404.17	\$1,683,505.68	\$1,748,723.13
	26	27	28	29	30		
ENERGY	\$4,384,945.86	\$4,579,208.53	\$5,566,657.02	\$6,210,344.49	\$5,232,412.47		
TRANSMISSION SERVICE	\$1,552,576.04	\$1,591,095.11	\$1,710,804.64	\$1,804,324.89	\$1,917,995.43		
UPLIFT	\$20,339.30	\$40,291.15	\$73,379.02	\$97,386.28	\$33,183.83		
RESIDUALS	(\$183,453.49)	(\$220,144.92)	(\$236,256.63)	\$239,864.67	(\$206,754.12)		
ANCILLARY SERVICES	\$1,066,676.64	\$1,054,105.91	\$1,100,537.55	\$1,088,123.99	\$1,124,578.21		
TCC	\$1,608,835.00	\$1,590,680.60	\$1,894,498.02	\$1,939,039.18	\$2,191,080.22		



SETTLEMENTS REPORT
 April 2021 Settlement Adjustment
 September 8, 2021

4-Month Settlement Adjustment – Market Costs Analysis

	MONDAY	TUESDAY	WEDNESDAY	THURSDAY	FRIDAY	SATURDAY	SUNDAY
ENERGY				1	2	3	4
TRANSMISSION SERVICE				\$5,852,413.05	\$6,797,597.95	\$5,083,543.04	\$4,132,915.62
UPLIFT				\$1,546,177.54	\$1,674,456.13	\$1,452,809.82	\$1,458,545.70
RESIDUALS				\$72,671.34	\$84,995.38	\$57,950.45	\$51,167.94
ANCILLARY SERVICES				(\$63,513.33)	(\$89,550.05)	\$36,194.64	\$7,997.22
TCC				\$1,103,890.34	\$1,109,828.06	\$1,054,743.24	\$1,015,563.72
				\$1,930,668.78	\$2,008,046.41	\$1,619,568.12	\$1,716,295.20
	5	6	7	8	9	10	11
ENERGY	\$4,582,650.31	\$4,496,122.77	\$4,154,818.81	\$3,913,339.28	\$4,129,167.74	\$3,376,969.68	\$3,856,095.77
TRANSMISSION SERVICE	\$1,512,925.34	\$1,477,088.82	\$1,355,939.61	\$1,395,106.94	\$1,457,582.12	\$1,393,785.51	\$1,507,065.01
UPLIFT	\$148,265.03	\$52,594.59	\$47,732.24	\$54,949.97	\$73,676.42	\$40,871.53	\$3,066.78
RESIDUALS	\$122,188.53	\$32,302.35	(\$45,005.65)	(\$59,074.68)	(\$110,110.46)	(\$118,238.64)	(\$75,493.23)
ANCILLARY SERVICES	\$1,058,565.35	\$1,062,113.45	\$1,035,179.34	\$1,042,742.24	\$1,045,164.39	\$1,013,599.52	\$1,038,919.60
TCC	\$1,829,131.80	\$1,760,979.92	\$1,504,006.55	\$1,613,807.85	\$1,700,252.91	\$1,615,463.46	\$1,800,714.36
	12	13	14	15	16	17	18
ENERGY	\$5,277,900.29	\$4,192,339.95	\$4,373,344.47	\$5,307,040.75	\$5,451,010.12	\$4,787,469.43	\$4,508,980.35
TRANSMISSION SERVICE	\$1,593,635.90	\$1,506,107.08	\$1,368,929.61	\$1,637,875.50	\$1,752,168.92	\$1,713,634.37	\$1,847,264.23
UPLIFT	\$15,547.88	\$7,938.42	\$10,048.13	\$11,770.65	\$14,453.64	\$23,412.16	\$2,265.03
RESIDUALS	(\$91,545.54)	(\$98,092.05)	(\$154,733.42)	(\$109,343.47)	(\$233,483.49)	(\$205,699.54)	(\$57,867.77)
ANCILLARY SERVICES	\$1,123,287.78	\$1,071,337.66	\$1,044,724.34	\$1,099,406.07	\$1,087,531.08	\$1,040,265.81	\$1,061,308.15
TCC	\$1,925,500.13	\$1,499,867.48	\$1,200,504.37	\$1,662,975.35	\$1,831,967.98	\$1,814,890.27	\$2,122,098.38
	19	20	21	22	23	24	25
ENERGY	\$5,199,984.99	\$4,863,287.16	\$5,195,460.48	\$6,182,960.65	\$5,508,231.80	\$4,064,539.62	\$3,976,340.81
TRANSMISSION SERVICE	\$1,895,680.90	\$1,686,397.24	\$1,532,689.05	\$1,994,073.92	\$1,857,398.73	\$1,566,741.52	\$1,612,106.01
UPLIFT	\$6,358.41	\$74,355.48	\$64,426.22	\$88,100.91	\$42,795.46	\$13,428.22	\$1,006.98
RESIDUALS	(\$127,195.16)	(\$190,241.93)	(\$92,385.60)	(\$34,463.43)	(\$160,192.46)	(\$126,848.66)	(\$119,861.52)
ANCILLARY SERVICES	\$1,096,730.41	\$1,097,806.71	\$1,097,123.86	\$1,151,169.57	\$1,100,753.07	\$1,021,133.95	\$1,077,747.88
TCC	\$2,180,830.14	\$1,941,149.94	\$1,494,878.14	\$2,375,463.87	\$2,237,296.90	\$1,695,516.12	\$1,762,152.96
	26	27	28	29	30		
ENERGY	\$4,385,787.47	\$4,580,151.77	\$5,567,297.92	\$6,212,200.75	\$5,234,293.06		
TRANSMISSION SERVICE	\$1,551,554.67	\$1,590,065.54	\$1,709,831.04	\$1,803,401.25	\$1,916,911.85		
UPLIFT	\$20,337.43	\$40,284.95	\$73,200.91	\$107,482.07	\$33,183.63		
RESIDUALS	(\$183,966.57)	(\$220,767.18)	(\$236,336.22)	\$238,866.41	(\$207,222.89)		
ANCILLARY SERVICES	\$1,059,725.02	\$1,052,864.05	\$1,099,459.69	\$1,086,129.53	\$1,116,648.63		
TCC	\$1,614,978.76	\$1,591,124.87	\$1,894,814.22	\$1,940,340.70	\$2,198,173.60		

