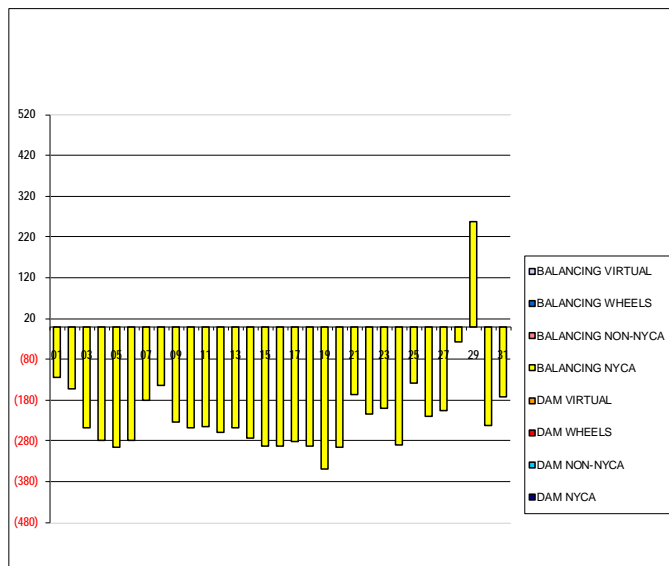


SETTLEMENTS REPORT  
 May 2021 Settlement Adjustment  
 October 7, 2021

Settlement Adjustment – Market Supply Delta Analysis

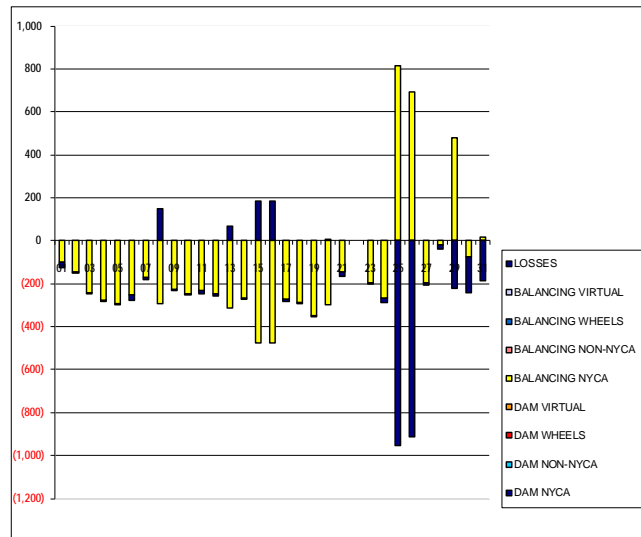
	MONDAY	TUESDAY	WEDNESDAY	THURSDAY	FRIDAY	SATURDAY	SUNDAY
DAM NYCA						1	2
DAM NON-NYCA						0	0
DAM WHEELS						0	0
DAM VIRTUAL						0	0
BALANCING NYCA						(124)	(152)
BALANCING NON-NYCA						0	0
BALANCING WHEELS						0	0
BALANCING VIRTUAL						0	0
	3	4	5	6	7	8	9
DAM NYCA	0	0	0	0	0	0	0
DAM NON-NYCA	0	0	0	0	0	0	0
DAM WHEELS	0	0	0	0	0	0	0
DAM VIRTUAL	0	0	0	0	0	0	0
BALANCING NYCA	(249)	(280)	(296)	(278)	(181)	(143)	(234)
BALANCING NON-NYCA	0	0	0	0	0	0	0
BALANCING WHEELS	0	0	0	0	0	0	0
BALANCING VIRTUAL	0	0	0	0	0	0	0
	10	11	12	13	14	15	16
DAM NYCA	0	0	0	0	0	0	0
DAM NON-NYCA	0	0	0	0	0	0	0
DAM WHEELS	0	0	0	0	0	0	0
DAM VIRTUAL	0	0	0	0	0	0	0
BALANCING NYCA	(249)	(246)	(260)	(247)	(273)	(292)	(293)
BALANCING NON-NYCA	0	0	0	0	0	0	0
BALANCING WHEELS	0	0	0	0	0	0	0
BALANCING VIRTUAL	0	0	0	0	0	0	0
	17	18	19	20	21	22	23
DAM NYCA	0	0	0	0	0	0	0
DAM NON-NYCA	0	0	0	0	0	0	0
DAM WHEELS	0	0	0	0	0	0	0
DAM VIRTUAL	0	0	0	0	0	0	0
BALANCING NYCA	(283)	(294)	(348)	(295)	(167)	(215)	(200)
BALANCING NON-NYCA	0	0	0	0	0	0	0
BALANCING WHEELS	0	0	0	0	0	0	0
BALANCING VIRTUAL	0	0	0	0	0	0	0
	24	25	26	27	28	29	30
DAM NYCA	0	0	0	0	0	0	0
DAM NON-NYCA	0	0	0	0	0	0	0
DAM WHEELS	0	0	0	0	0	0	0
DAM VIRTUAL	0	0	0	0	0	0	0
BALANCING NYCA	(290)	(139)	(221)	(205)	(38)	256	(244)
BALANCING NON-NYCA	0	0	0	0	0	0	0
BALANCING WHEELS	0	0	0	0	0	0	0
BALANCING VIRTUAL	0	0	0	0	0	0	0
	31						
DAM NYCA	0						
DAM NON-NYCA	0						
DAM WHEELS	0						
DAM VIRTUAL	0						
BALANCING NYCA	(172)						
BALANCING NON-NYCA	0						
BALANCING WHEELS	0						
BALANCING VIRTUAL	0						



SETTLEMENTS REPORT  
 May 2021 Settlement Adjustment  
 October 7, 2021

Settlement Adjustment – Market Withdrawals Delta Analysis

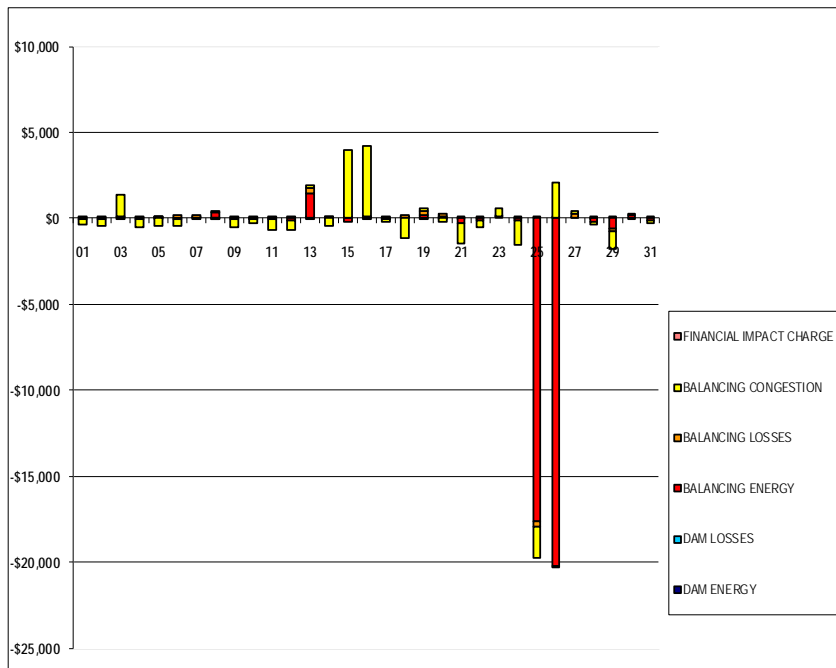
	MONDAY	TUESDAY	WEDNESDAY	THURSDAY	FRIDAY	SATURDAY	SUNDAY
DAM NYCA						1	2
DAM NON-NYCA						0	0
DAM WHEELS						0	0
DAM VIRTUAL						0	0
BALANCING NYCA						(102)	(143)
BALANCING NON-NYCA						0	0
BALANCING WHEELS						0	0
BALANCING VIRTUAL						0	0
UFE/LOSSES						(21)	(8)
	3	4	5	6	7	8	9
DAM NYCA	0	0	0	0	0	0	0
DAM NON-NYCA	0	0	0	0	0	0	0
DAM WHEELS	0	0	0	0	0	0	0
DAM VIRTUAL	0	0	0	0	0	0	0
BALANCING NYCA	(244)	(275)	(295)	(254)	(171)	(293)	(226)
BALANCING NON-NYCA	0	0	0	0	0	0	0
BALANCING WHEELS	0	0	0	0	0	0	0
BALANCING VIRTUAL	0	0	0	0	0	0	0
UFE/LOSSES	(5)	(4)	(1)	(24)	(10)	150	(8)
	10	11	12	13	14	15	16
DAM NYCA	0	0	0	0	0	0	0
DAM NON-NYCA	0	0	0	0	0	0	0
DAM WHEELS	0	0	0	0	0	0	0
DAM VIRTUAL	0	0	0	0	0	0	0
BALANCING NYCA	(247)	(231)	(245)	(315)	(268)	(474)	(475)
BALANCING NON-NYCA	0	0	0	0	0	0	0
BALANCING WHEELS	0	0	0	0	0	0	0
BALANCING VIRTUAL	0	0	0	0	0	0	0
UFE/LOSSES	(1)	(15)	(15)	68	(5)	182	183
	17	18	19	20	21	22	23
DAM NYCA	0	0	0	0	0	0	0
DAM NON-NYCA	0	0	0	0	0	0	0
DAM WHEELS	0	0	0	0	0	0	0
DAM VIRTUAL	0	0	0	0	0	0	0
BALANCING NYCA	(270)	(287)	(348)	(298)	(148)	#REF!	(199)
BALANCING NON-NYCA	0	0	0	0	0	0	0
BALANCING WHEELS	0	0	0	0	0	0	0
BALANCING VIRTUAL	0	0	0	0	0	0	0
UFE/LOSSES	(13)	(8)	(0)	3	(19)	#REF!	(2)
	24	25	26	27	28	29	30
DAM NYCA	0	0	0	0	0	0	0
DAM NON-NYCA	0	0	0	0	0	0	0
DAM WHEELS	0	0	0	0	0	0	0
DAM VIRTUAL	0	0	0	0	0	0	0
BALANCING NYCA	(266)	816	694	(196)	(17)	479	(75)
BALANCING NON-NYCA	0	0	0	0	0	0	0
BALANCING WHEELS	0	0	0	0	0	0	0
BALANCING VIRTUAL	0	0	0	0	0	0	0
UFE/LOSSES	(24)	(955)	(915)	(9)	(21)	(222)	(169)
	31						
DAM NYCA	0						
DAM NON-NYCA	0						
DAM WHEELS	0						
DAM VIRTUAL	0						
BALANCING NYCA	15						
BALANCING NON-NYCA	0						
BALANCING WHEELS	0						
BALANCING VIRTUAL	0						
UFE/LOSSES	(188)						



SETTLEMENTS REPORT  
 May 2021 Settlement Adjustment  
 October 7, 2021

Settlement Adjustment – Market Residuals Delta Analysis

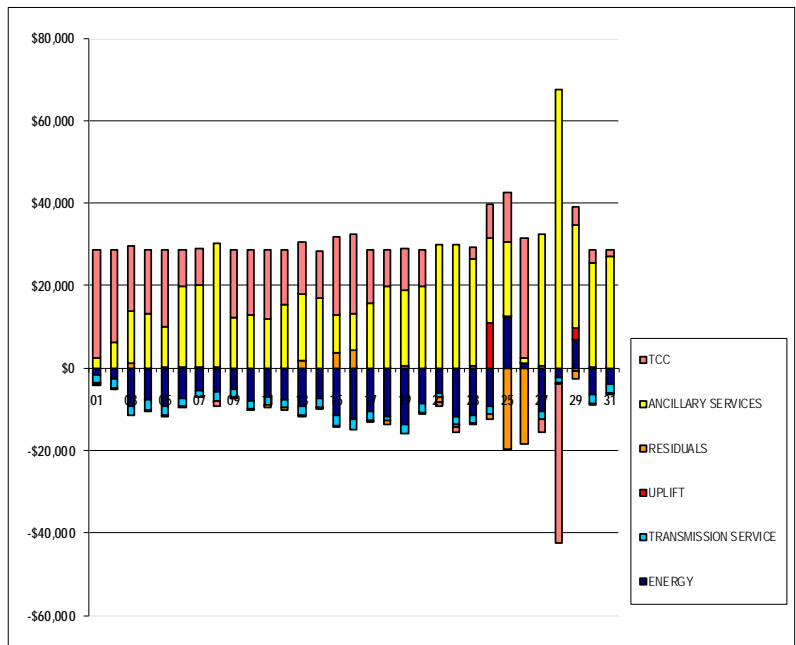
	MONDAY	TUESDAY	WEDNESDAY	THURSDAY	FRIDAY	SATURDAY	SUNDAY
						1	2
DAM ENERGY						\$0.00	\$0.00
DAM LOSSES						\$0.00	\$0.00
BALANCING ENERGY						(\$76.05)	(\$12.47)
BALANCING LOSSES						\$43.50	\$37.86
BALANCING CONGESTION						(\$308.06)	(\$436.42)
FINANCIAL IMPACT CHARGE						\$0.00	\$0.00
	3	4	5	6	7	8	9
DAM ENERGY	\$0.00	\$0.00	\$0.01	\$0.00	\$0.00	(\$0.01)	\$0.00
DAM LOSSES	\$0.00	\$0.00	(\$0.01)	\$0.00	\$0.00	\$0.00	\$0.00
BALANCING ENERGY	(\$76.20)	(\$27.67)	\$10.90	(\$75.83)	\$29.09	\$377.03	(\$58.22)
BALANCING LOSSES	\$145.83	\$146.11	\$38.01	\$149.83	\$135.39	\$13.54	\$79.55
BALANCING CONGESTION	\$1,191.98	(\$486.97)	(\$468.63)	(\$400.38)	(\$7.61)	(\$44.02)	(\$471.92)
FINANCIAL IMPACT CHARGE	\$0.00	\$0.00	\$0.00	\$0.00	\$0.00	\$0.00	\$0.00
	10	11	12	13	14	15	16
DAM ENERGY	\$0.00	\$0.00	\$0.00	(\$0.01)	\$0.00	\$0.00	\$0.00
DAM LOSSES	(\$0.01)	\$0.00	\$0.00	\$0.01	(\$0.01)	\$0.00	\$0.00
BALANCING ENERGY	(\$28.13)	(\$40.65)	(\$110.53)	\$1,458.86	\$46.65	(\$241.80)	(\$58.37)
BALANCING LOSSES	\$107.97	\$71.22	\$118.90	\$287.29	\$72.08	\$67.08	\$144.24
BALANCING CONGESTION	(\$243.05)	(\$641.08)	(\$600.00)	\$156.97	(\$440.87)	\$3,880.04	\$4,078.75
FINANCIAL IMPACT CHARGE	\$0.00	\$0.00	\$0.00	\$0.00	\$0.00	\$0.00	\$0.00
	17	18	19	20	21	22	23
DAM ENERGY	(\$0.01)	\$0.01	(\$0.01)	\$0.00	\$0.00	(\$0.01)	\$0.00
DAM LOSSES	(\$0.01)	\$0.00	\$0.00	(\$0.01)	(\$0.01)	\$0.00	\$0.00
BALANCING ENERGY	(\$60.01)	\$33.20	\$152.50	\$91.73	(\$290.63)	(\$132.56)	\$75.84
BALANCING LOSSES	\$127.66	\$122.26	\$236.89	\$169.58	\$130.28	\$7.12	\$65.89
BALANCING CONGESTION	(\$135.87)	(\$1,122.45)	\$170.38	(\$242.32)	(\$1,186.79)	(\$383.10)	\$451.77
FINANCIAL IMPACT CHARGE	\$0.00	\$0.00	\$0.00	\$0.00	\$0.00	\$0.00	\$0.00
	24	25	26	27	28	29	30
DAM ENERGY	\$0.00	\$0.00	\$0.00	\$0.00	\$0.00	\$0.00	\$0.00
DAM LOSSES	(\$0.01)	\$0.01	\$0.01	\$0.00	(\$0.01)	\$0.01	\$0.00
BALANCING ENERGY	(\$103.22)	(\$17,613.89)	(\$20,203.98)	\$66.93	(\$246.34)	(\$595.91)	\$180.37
BALANCING LOSSES	\$80.90	(\$314.04)	(\$139.83)	\$167.37	\$132.57	(\$130.78)	\$16.69
BALANCING CONGESTION	(\$1,424.57)	(\$1,793.75)	\$2,056.89	\$170.97	(\$144.46)	(\$1,024.86)	(\$29.52)
FINANCIAL IMPACT CHARGE	\$0.00	\$0.00	\$0.00	\$0.00	\$0.00	\$0.00	\$0.00
	31						
DAM ENERGY	\$0.00						
DAM LOSSES	\$0.00						
BALANCING ENERGY	(\$103.15)						
BALANCING LOSSES	\$22.58						
BALANCING CONGESTION	(\$220.45)						
FINANCIAL IMPACT CHARGE	\$0.00						



SETTLEMENTS REPORT  
 May 2021 Settlement Adjustment  
 October 7, 2021

Settlement Adjustment – Market Costs Delta Analysis

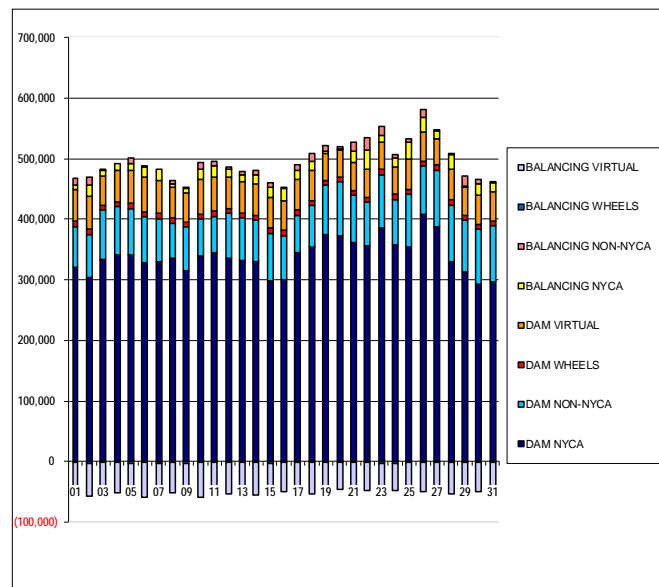
	MONDAY	TUESDAY	WEDNESDAY	THURSDAY	FRIDAY	SATURDAY	SUNDAY
						1	2
ENERGY						(\$1,741.84)	(\$2,527.23)
TRANSMISSION SERVICE						(\$1,928.32)	(\$2,187.82)
UPLIFT						(\$133.25)	(\$0.08)
RESIDUALS						(\$340.61)	(\$411.03)
ANCILLARY SERVICES						\$2,572.96	\$6,122.22
TCC						\$26,186.73	\$22,472.06
	3	4	5	6	7	8	9
ENERGY	(\$9,132.89)	(\$7,837.86)	(\$9,414.43)	(\$7,353.84)	(\$5,444.26)	(\$5,944.97)	(\$5,037.11)
TRANSMISSION SERVICE	(\$2,347.69)	(\$2,244.21)	(\$2,055.54)	(\$1,913.63)	(\$1,735.59)	(\$2,036.48)	(\$2,035.53)
UPLIFT	\$1.14	\$3.13	\$114.17	\$74.22	\$33.38	(\$0.39)	(\$1.99)
RESIDUALS	\$1,261.61	(\$368.53)	(\$419.72)	(\$326.38)	\$156.87	\$346.54	(\$450.59)
ANCILLARY SERVICES	\$12,622.38	\$13,282.08	\$9,792.05	\$19,592.70	\$19,904.54	\$29,854.51	\$12,055.16
TCC	\$15,845.02	\$15,235.10	\$18,825.55	\$9,131.77	\$8,942.85	(\$1,174.24)	\$16,599.14
	10	11	12	13	14	15	16
ENERGY	(\$7,945.24)	(\$7,037.44)	(\$7,581.23)	(\$9,229.46)	(\$7,332.63)	(\$11,344.35)	(\$12,340.19)
TRANSMISSION SERVICE	(\$1,828.65)	(\$1,791.81)	(\$1,904.56)	(\$2,127.67)	(\$2,361.64)	(\$2,691.90)	(\$2,588.54)
UPLIFT	(\$1.07)	(\$1.55)	\$36.30	(\$0.16)	(\$0.20)	(\$0.32)	\$0.46
RESIDUALS	(\$163.22)	(\$610.51)	(\$591.63)	\$1,903.12	(\$322.15)	\$3,705.32	\$4,164.62
ANCILLARY SERVICES	\$12,830.55	\$11,788.11	\$15,204.10	\$15,998.74	\$17,021.04	\$9,166.86	\$9,076.05
TCC	\$15,931.62	\$17,004.16	\$13,517.89	\$12,573.42	\$11,424.11	\$19,031.30	\$19,175.83
	17	18	19	20	21	22	23
ENERGY	(\$10,631.63)	(\$11,773.29)	(\$13,634.18)	(\$8,751.02)	(\$6,148.15)	(\$11,921.21)	(\$11,522.35)
TRANSMISSION SERVICE	(\$2,135.09)	(\$902.17)	(\$2,209.44)	(\$2,048.34)	(\$814.38)	(\$1,858.03)	(\$1,760.49)
UPLIFT	(\$49.20)	\$0.87	\$1.29	(\$1.28)	(\$14.59)	(\$3.06)	(\$225.53)
RESIDUALS	(\$68.24)	(\$966.98)	\$559.76	\$18.98	(\$1,347.15)	(\$508.55)	\$593.50
ANCILLARY SERVICES	\$15,782.36	\$19,908.15	\$18,141.14	\$19,803.47	\$29,809.39	\$29,957.80	\$25,852.61
TCC	\$12,803.45	\$8,723.88	\$10,367.27	\$8,731.22	(\$928.65)	(\$1,235.88)	\$2,962.67
	24	25	26	27	28	29	30
ENERGY	(\$9,245.22)	\$12,211.84	\$1,109.52	(\$10,639.95)	(\$2,182.01)	\$6,819.10	(\$6,564.22)
TRANSMISSION SERVICE	(\$1,841.75)	\$292.41	(\$84.93)	(\$1,700.05)	(\$1,511.33)	(\$759.72)	(\$2,221.99)
UPLIFT	\$11,103.01	\$0.65	\$180.18	\$32.98	(\$5.97)	\$2,940.80	(\$0.58)
RESIDUALS	(\$1,446.90)	(\$19,721.67)	(\$18,286.91)	\$405.27	(\$258.24)	(\$1,751.54)	\$167.54
ANCILLARY SERVICES	\$20,503.67	\$17,951.45	\$1,158.58	\$32,155.09	\$67,404.60	\$24,925.44	\$25,323.64
TCC	\$8,142.17	\$12,226.91	\$28,897.40	(\$3,303.40)	(\$38,389.98)	\$4,422.63	\$3,212.50
	31						
ENERGY	(\$3,905.14)						
TRANSMISSION SERVICE	(\$2,054.76)						
UPLIFT	\$1.18						
RESIDUALS	(\$301.02)						
ANCILLARY SERVICES	\$26,939.73						
TCC	\$1,721.41						



SETTLEMENTS REPORT  
 May 2021 Settlement Adjustment  
 October 7, 2021

Initial Settlement – Market Supply Analysis

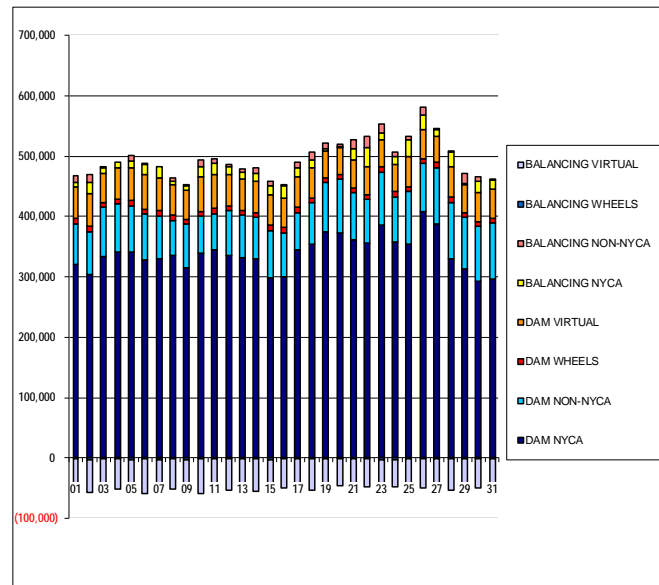
	MONDAY	TUESDAY	WEDNESDAY	THURSDAY	FRIDAY	SATURDAY	SUNDAY
						1	2
DAM NYCA						321,509	303,445
DAM NON-NYCA						67,157	72,251
DAM WHEELS						8,400	8,160
DAM VIRTUAL						52,698	54,993
BALANCING NYCA						6,511	17,942
BALANCING NON-NYCA						11,452	13,188
BALANCING WHEELS						(1,200)	(2,594)
BALANCING VIRTUAL						(52,698)	(54,993)
	3	4	5	6	7	8	9
DAM NYCA	333,505	340,677	341,134	328,194	331,019	335,656	315,368
DAM NON-NYCA	82,054	80,813	75,985	75,634	70,558	58,660	72,071
DAM WHEELS	8,040	8,125	9,840	8,749	8,733	8,880	8,160
DAM VIRTUAL	47,208	50,728	53,601	57,161	54,541	49,677	48,563
BALANCING NYCA	10,311	10,957	11,981	17,746	17,896	5,880	7,446
BALANCING NON-NYCA	2,503	(53)	8,708	699	(2,155)	6,048	1,473
BALANCING WHEELS	(1,270)	(1,355)	(2,741)	(1,669)	(1,533)	(1,786)	(2,527)
BALANCING VIRTUAL	(47,208)	(50,728)	(53,601)	(57,161)	(54,541)	(49,677)	(48,563)
	10	11	12	13	14	15	16
DAM NYCA	340,232	345,819	336,189	332,196	331,047	299,239	300,400
DAM NON-NYCA	59,859	59,673	73,246	70,101	68,042	76,850	72,997
DAM WHEELS	8,370	7,960	7,960	7,840	7,915	9,213	8,976
DAM VIRTUAL	58,335	56,971	52,118	52,029	52,414	51,240	48,494
BALANCING NYCA	15,650	18,031	13,068	12,146	13,490	15,766	19,736
BALANCING NON-NYCA	12,349	7,273	3,423	5,147	8,791	7,346	2,330
BALANCING WHEELS	(1,686)	(2,001)	(2,165)	(2,016)	(2,263)	(3,610)	(2,242)
BALANCING VIRTUAL	(58,335)	(56,971)	(52,118)	(52,029)	(52,414)	(51,240)	(48,494)
	17	18	19	20	21	22	23
DAM NYCA	344,156	354,073	375,310	373,705	361,977	355,796	386,829
DAM NON-NYCA	62,907	68,810	81,496	89,154	78,865	72,368	86,473
DAM WHEELS	7,893	7,255	7,631	7,841	7,320	8,223	8,768
DAM VIRTUAL	51,250	51,593	44,830	44,241	46,276	46,080	45,471
BALANCING NYCA	14,882	13,364	4,298	2,309	17,929	32,488	11,570
BALANCING NON-NYCA	9,441	12,956	9,344	3,360	16,133	19,365	14,905
BALANCING WHEELS	(1,821)	(1,259)	(1,251)	(1,587)	(1,472)	(1,625)	(2,428)
BALANCING VIRTUAL	(51,250)	(51,593)	(44,830)	(44,241)	(46,276)	(46,080)	(45,471)
	24	25	26	27	28	29	30
DAM NYCA	357,738	354,600	408,121	388,314	329,628	313,966	292,150
DAM NON-NYCA	75,433	87,527	80,479	93,235	94,323	84,684	92,592
DAM WHEELS	8,255	7,575	8,160	8,194	8,260	7,400	7,200
DAM VIRTUAL	45,760	50,156	47,061	44,068	50,829	46,437	48,605
BALANCING NYCA	13,681	27,023	25,218	11,571	23,256	1,684	18,205
BALANCING NON-NYCA	6,161	6,738	12,049	869	3,426	17,550	6,882
BALANCING WHEELS	(2,626)	(1,913)	(2,037)	(1,625)	(1,950)	(1,748)	(1,720)
BALANCING VIRTUAL	(45,760)	(50,156)	(47,061)	(44,068)	(50,829)	(46,437)	(48,605)
	31						
DAM NYCA	296,610						
DAM NON-NYCA	92,683						
DAM WHEELS	7,200						
DAM VIRTUAL	49,485						
BALANCING NYCA	14,604						
BALANCING NON-NYCA	2,555						
BALANCING WHEELS	(1,548)						
BALANCING VIRTUAL	(49,485)						



SETTLEMENTS REPORT  
 May 2021 Settlement Adjustment  
 October 7, 2021

4-Month Settlement Adjustment – Market Supply Analysis

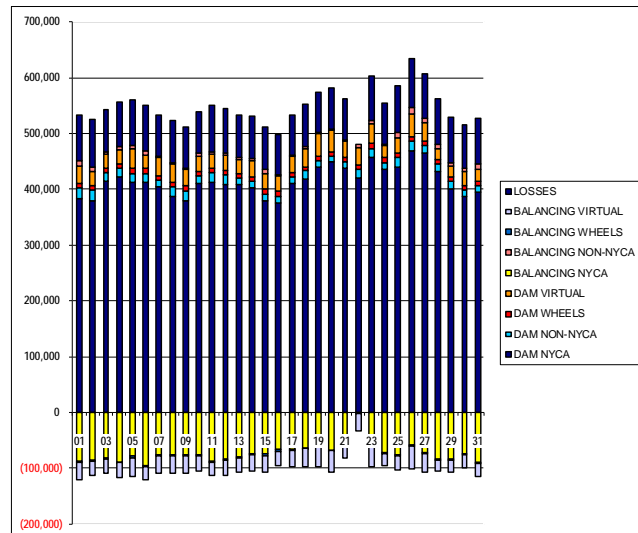
	MONDAY	TUESDAY	WEDNESDAY	THURSDAY	FRIDAY	SATURDAY	SUNDAY
						1	2
DAM NYCA						321,509	303,445
DAM NON-NYCA						67,157	72,251
DAM WHEELS						8,400	8,160
DAM VIRTUAL						52,698	54,993
BALANCING NYCA						6,387	17,690
BALANCING NON-NYCA						11,452	13,188
BALANCING WHEELS						(1,200)	(2,594)
BALANCING VIRTUAL						(52,698)	(54,993)
	3	4	5	6	7	8	9
DAM NYCA	333,505	340,677	341,134	328,194	331,019	335,656	315,368
DAM NON-NYCA	82,054	80,813	75,985	75,634	70,558	58,660	72,071
DAM WHEELS	8,040	8,125	9,840	8,749	8,733	8,880	8,160
DAM VIRTUAL	47,208	50,728	53,601	57,161	54,541	49,677	48,563
BALANCING NYCA	10,063	10,677	11,685	17,468	17,715	5,737	7,212
BALANCING NON-NYCA	2,503	(53)	8,708	699	(2,155)	6,048	1,473
BALANCING WHEELS	(1,270)	(1,355)	(2,741)	(1,669)	(1,533)	(1,786)	(2,527)
BALANCING VIRTUAL	(47,208)	(50,728)	(53,601)	(57,161)	(54,541)	(49,677)	(48,563)
	10	11	12	13	14	15	16
DAM NYCA	340,232	345,819	336,189	332,196	331,047	299,239	300,400
DAM NON-NYCA	59,859	59,673	73,246	70,101	68,042	76,850	72,997
DAM WHEELS	8,370	7,960	7,960	7,840	7,915	9,213	8,976
DAM VIRTUAL	58,335	56,971	52,118	52,029	52,414	51,240	48,494
BALANCING NYCA	15,402	17,785	12,808	11,899	13,217	15,474	19,444
BALANCING NON-NYCA	12,349	7,273	3,423	5,147	8,791	7,346	2,330
BALANCING WHEELS	(1,686)	(2,001)	(2,165)	(2,016)	(2,263)	(3,610)	(2,242)
BALANCING VIRTUAL	(58,335)	(56,971)	(52,118)	(52,029)	(52,414)	(51,240)	(48,494)
	17	18	19	20	21	22	23
DAM NYCA	344,156	354,073	375,310	373,705	361,977	355,796	386,829
DAM NON-NYCA	62,907	68,810	81,496	89,154	78,865	72,368	86,473
DAM WHEELS	7,893	7,255	7,631	7,841	7,320	8,223	8,768
DAM VIRTUAL	51,250	51,593	44,830	44,241	46,276	46,080	45,471
BALANCING NYCA	14,599	13,069	3,950	2,014	17,762	32,273	11,369
BALANCING NON-NYCA	9,441	12,956	9,344	3,360	16,133	19,365	14,905
BALANCING WHEELS	(1,821)	(1,259)	(1,251)	(1,587)	(1,472)	(1,625)	(2,428)
BALANCING VIRTUAL	(51,250)	(51,593)	(44,830)	(44,241)	(46,276)	(46,080)	(45,471)
	24	25	26	27	28	29	30
DAM NYCA	357,738	354,600	408,121	388,314	329,628	313,966	292,150
DAM NON-NYCA	75,433	87,527	80,479	93,235	94,323	84,684	92,592
DAM WHEELS	8,255	7,575	8,160	8,194	8,260	7,400	7,200
DAM VIRTUAL	45,760	50,156	47,061	44,068	50,829	46,437	48,605
BALANCING NYCA	13,391	26,884	24,997	11,366	23,218	1,941	17,961
BALANCING NON-NYCA	6,161	6,738	12,049	869	3,426	17,550	6,882
BALANCING WHEELS	(2,626)	(1,913)	(2,037)	(1,625)	(1,950)	(1,748)	(1,720)
BALANCING VIRTUAL	(45,760)	(50,156)	(47,061)	(44,068)	(50,829)	(46,437)	(48,605)
	31						
DAM NYCA	296,610						
DAM NON-NYCA	92,683						
DAM WHEELS	7,200						
DAM VIRTUAL	49,485						
BALANCING NYCA	14,431						
BALANCING NON-NYCA	2,555						
BALANCING WHEELS	(1,548)						
BALANCING VIRTUAL	(49,485)						



SETTLEMENTS REPORT  
 May 2021 Settlement Adjustment  
 October 7, 2021

Initial Settlement – Market Withdrawals Analysis

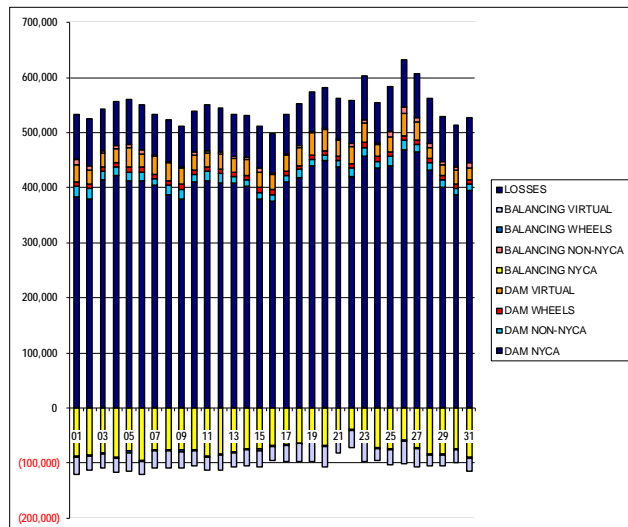
	MONDAY	TUESDAY	WEDNESDAY	THURSDAY	FRIDAY	SATURDAY	SUNDAY
						1	2
DAM NYCA						383,624	379,483
DAM NON-NYCA						18,952	19,146
DAM WHEELS						8,400	8,160
DAM VIRTUAL						31,182	24,305
BALANCING NYCA						(87,529)	(85,137)
BALANCING NON-NYCA						8,286	9,198
BALANCING WHEELS							(2,594)
BALANCING VIRTUAL						(31,182)	(24,305)
UFE/LOSSES						83,295	84,034
	3	4	5	6	7	8	9
DAM NYCA	415,010	422,926	411,704	412,633	403,760	387,509	379,024
DAM NON-NYCA	15,012	14,595	16,618	16,317	12,268	16,947	18,468
DAM WHEELS	8,040	8,125	9,840	8,749	8,733	8,880	8,160
DAM VIRTUAL	24,416	25,999	33,792	23,624	31,532	31,914	30,772
BALANCING NYCA	(82,300)	(88,965)	(78,422)	(95,576)	(75,700)	(75,768)	(76,118)
BALANCING NON-NYCA	4,190	5,815	6,408	6,911	3,211	2,561	1,846
BALANCING WHEELS	(1,270)	(1,355)	(2,741)	(1,669)	(1,533)	(1,786)	(2,527)
BALANCING VIRTUAL	(24,416)	(25,999)	(33,792)	(23,624)	(31,532)	(31,914)	(30,772)
UFE/LOSSES	76,461	78,022	81,499	81,989	73,779	74,995	73,138
	10	11	12	13	14	15	16
DAM NYCA	409,753	411,574	409,187	407,990	401,997	379,815	376,310
DAM NON-NYCA	13,641	18,834	17,072	12,206	12,168	10,894	11,623
DAM WHEELS	8,370	7,960	7,960	7,840	7,915	9,213	8,976
DAM VIRTUAL	27,512	24,412	27,040	25,714	29,244	28,527	26,280
BALANCING NYCA	(75,823)	(86,753)	(82,940)	(79,803)	(73,406)	(74,335)	(67,012)
BALANCING NON-NYCA	4,799	4,999	3,907	3,879	4,625	6,404	2,934
BALANCING WHEELS	(1,686)	(2,001)	(2,165)	(2,016)	(2,263)	(3,610)	(2,242)
BALANCING VIRTUAL	(27,512)	(24,412)	(27,040)	(25,714)	(29,244)	(28,527)	(26,280)
UFE/LOSSES	75,720	82,142	78,701	75,319	75,786	76,422	71,608
	17	18	19	20	21	22	23
DAM NYCA	410,646	418,681	439,504	448,527	437,237	420,511	456,871
DAM NON-NYCA	11,685	14,686	12,706	11,457	12,593	14,754	16,799
DAM WHEELS	7,893	7,255	7,631	7,841	7,320	8,223	8,768
DAM VIRTUAL	27,983	32,731	40,429	37,777	28,825	30,740	35,900
BALANCING NYCA	(66,546)	(63,326)	(54,642)	(67,241)	(50,942)	#REF!	(68,589)
BALANCING NON-NYCA	3,810	3,936	1,479	3,036	2,374	5,718	4,501
BALANCING WHEELS	(1,821)	(1,259)	(1,251)	(1,587)	(1,472)	(1,625)	(2,428)
BALANCING VIRTUAL	(27,983)	(32,731)	(40,429)	(37,777)	(28,825)	(30,740)	(35,900)
UFE/LOSSES	71,791	75,226	71,402	72,748	73,643	#REF!	80,194
	24	25	26	27	28	29	30
DAM NYCA	435,440	439,355	468,010	465,484	432,093	399,966	387,564
DAM NON-NYCA	12,942	18,283	17,570	13,270	12,526	13,906	11,903
DAM WHEELS	8,255	7,575	8,160	8,194	8,260	7,400	7,200
DAM VIRTUAL	22,011	26,648	40,719	33,421	19,899	21,046	24,262
BALANCING NYCA	(71,164)	(75,344)	(58,680)	(71,394)	(83,519)	(83,335)	(73,394)
BALANCING NON-NYCA	2,336	9,328	11,987	6,960	8,068	6,086	5,861
BALANCING WHEELS	(2,626)	(1,913)	(2,037)	(1,625)	(1,950)	(1,748)	(1,720)
BALANCING VIRTUAL	(22,011)	(26,648)	(40,719)	(33,421)	(19,899)	(21,046)	(24,262)
UFE/LOSSES	73,459	84,266	86,981	79,670	81,465	81,262	77,895
	31						
DAM NYCA	394,182						
DAM NON-NYCA	12,289						
DAM WHEELS	7,200						
DAM VIRTUAL	22,847						
BALANCING NYCA	(90,342)						
BALANCING NON-NYCA	8,840						
BALANCING WHEELS	(1,548)						
BALANCING VIRTUAL	(22,847)						
UFE/LOSSES	81,482						



SETTLEMENTS REPORT  
 May 2021 Settlement Adjustment  
 October 7, 2021

4-Month Settlement Adjustment – Market Withdrawals Analysis

	MONDAY	TUESDAY	WEDNESDAY	THURSDAY	FRIDAY	SATURDAY	SUNDAY
						1	2
DAM NYCA						383,624	379,483
DAM NON-NYCA						10,952	19,146
DAM WHEELS						8,400	8,160
DAM VIRTUAL						31,182	24,305
BALANCING NYCA						(87,631)	(85,280)
BALANCING NON-NYCA						8,286	9,198
BALANCING WHEELS						(1,200)	(2,594)
BALANCING VIRTUAL						(31,182)	(24,305)
UFE/LOSSES						83,274	84,026
	3	4	5	6	7	8	9
DAM NYCA	415,010	422,926	411,704	412,633	403,760	387,509	379,024
DAM NON-NYCA	15,012	14,595	16,618	16,317	12,268	16,947	18,468
DAM WHEELS	8,040	8,125	9,840	8,749	8,733	8,880	8,160
DAM VIRTUAL	24,416	25,999	33,792	23,624	31,532	31,914	30,772
BALANCING NYCA	(82,544)	(89,240)	(78,717)	(95,830)	(75,871)	(76,061)	(76,344)
BALANCING NON-NYCA	4,190	5,815	6,408	6,911	3,211	2,561	1,846
BALANCING WHEELS	(1,270)	(1,355)	(2,741)	(1,669)	(1,533)	(1,786)	(2,527)
BALANCING VIRTUAL	(24,416)	(25,999)	(33,792)	(23,624)	(31,532)	(31,914)	(30,772)
UFE/LOSSES	76,457	78,018	81,498	81,965	73,769	75,144	73,131
	10	11	12	13	14	15	16
DAM NYCA	409,753	411,574	409,187	407,990	401,997	379,815	376,310
DAM NON-NYCA	13,641	18,834	17,072	12,206	12,168	10,894	11,623
DAM WHEELS	8,370	7,960	7,960	7,840	7,915	9,213	8,976
DAM VIRTUAL	27,512	24,412	27,040	25,714	29,244	28,527	26,280
BALANCING NYCA	(76,070)	(86,984)	(83,185)	(80,119)	(73,674)	(74,809)	(67,488)
BALANCING NON-NYCA	4,799	4,999	3,907	3,879	4,825	6,404	2,934
BALANCING WHEELS	(1,686)	(2,001)	(2,165)	(2,016)	(2,263)	(3,610)	(2,242)
BALANCING VIRTUAL	(27,512)	(24,412)	(27,040)	(25,714)	(29,244)	(28,527)	(26,280)
UFE/LOSSES	75,718	82,127	78,686	75,387	75,781	76,605	71,791
	17	18	19	20	21	22	23
DAM NYCA	410,646	418,681	439,504	448,527	437,237	420,511	456,871
DAM NON-NYCA	11,685	14,686	12,706	11,457	12,593	14,754	16,799
DAM WHEELS	7,893	7,255	7,631	7,841	7,320	8,223	8,768
DAM VIRTUAL	27,983	32,731	40,429	37,777	28,825	30,740	35,900
BALANCING NYCA	(66,817)	(63,613)	(54,990)	(67,539)	(51,089)	(39,033)	(58,788)
BALANCING NON-NYCA	3,810	3,936	1,479	3,036	2,374	5,718	4,501
BALANCING WHEELS	(1,821)	(1,259)	(1,251)	(1,587)	(1,472)	(1,625)	(2,428)
BALANCING VIRTUAL	(27,983)	(32,731)	(40,429)	(37,777)	(28,825)	(30,740)	(35,900)
UFE/LOSSES	71,778	75,219	71,402	72,751	73,623	77,852	80,193
	24	25	26	27	28	29	30
DAM NYCA	435,440	439,355	468,010	465,484	432,093	399,966	387,564
DAM NON-NYCA	12,942	18,283	17,570	13,270	12,526	13,906	11,903
DAM WHEELS	8,255	7,575	8,160	8,194	8,260	7,400	7,200
DAM VIRTUAL	22,011	26,648	40,719	33,421	19,899	21,046	24,262
BALANCING NYCA	(71,430)	(74,528)	(57,986)	(71,590)	(83,537)	(82,856)	(73,469)
BALANCING NON-NYCA	2,336	9,328	11,987	6,960	8,068	6,086	5,861
BALANCING WHEELS	(2,626)	(1,913)	(2,037)	(1,625)	(1,950)	(1,748)	(1,720)
BALANCING VIRTUAL	(22,011)	(26,648)	(40,719)	(33,421)	(19,899)	(21,046)	(24,262)
UFE/LOSSES	73,435	83,312	86,066	79,661	81,444	81,039	77,126
	31						
DAM NYCA	394,182						
DAM NON-NYCA	12,289						
DAM WHEELS	7,200						
DAM VIRTUAL	22,847						
BALANCING NYCA	(90,327)						
BALANCING NON-NYCA	8,840						
BALANCING WHEELS	(1,548)						
BALANCING VIRTUAL	(22,847)						
UFE/LOSSES	81,294						

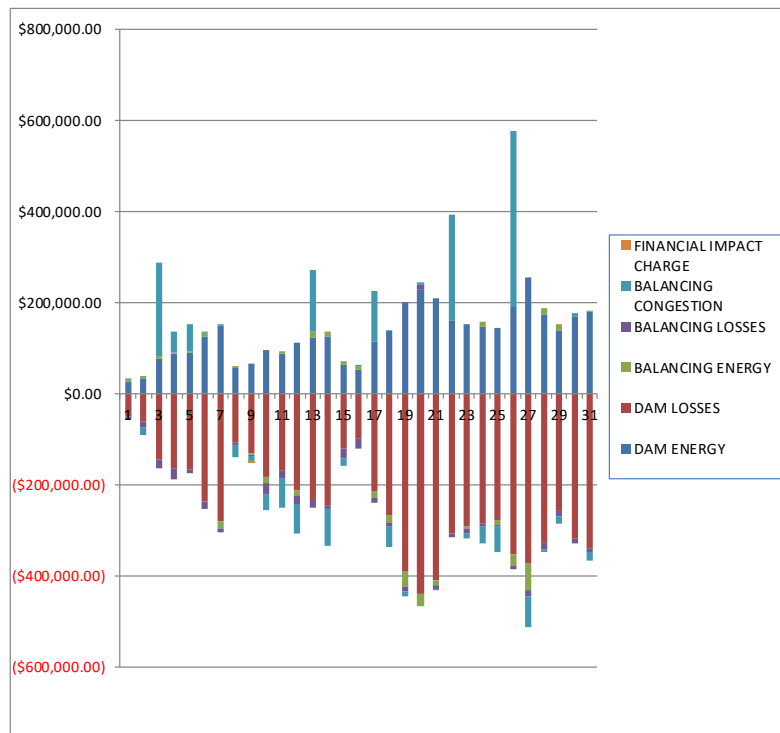




SETTLEMENTS REPORT  
 May 2021 Settlement Adjustment  
 October 7, 2021

Initial Settlement – Market Residuals Analysis

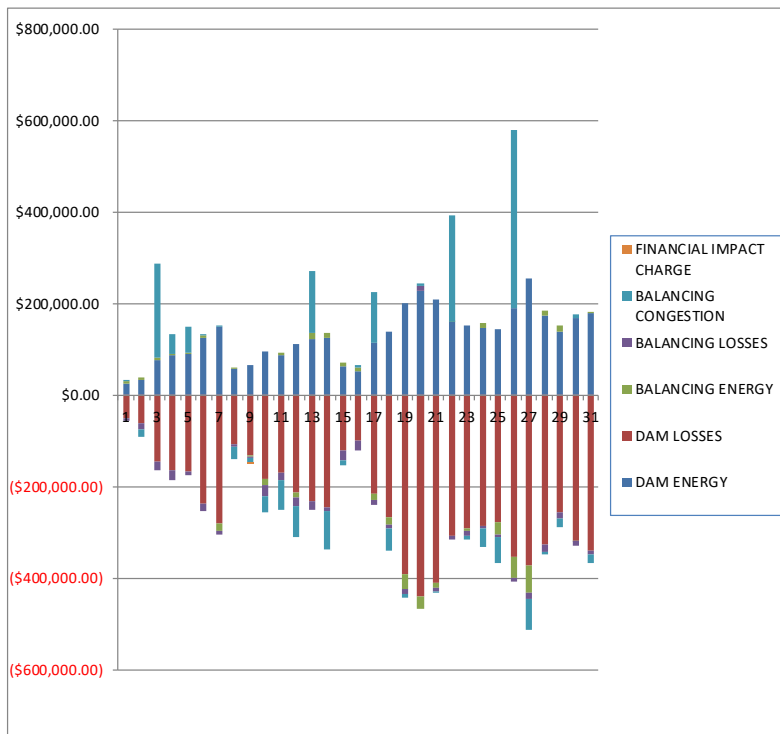
	MONDAY	TUESDAY	WEDNESDAY	THURSDAY	FRIDAY	SATURDAY	SUNDAY
						1	2
DAM ENERGY						\$26,413.37	\$32,850.41
DAM LOSSES						(\$49,103.57)	(\$60,814.35)
BALANCING ENERGY						\$4,537.02	\$7,329.99
BALANCING LOSSES						(\$5,410.21)	(\$13,019.65)
BALANCING CONGESTION						\$3,650.25	(\$17,826.58)
FINANCIAL IMPACT CHARGE						\$0.00	\$0.00
	3	4	5	6	7	8	9
DAM ENERGY	\$76,422.24	\$87,603.64	\$89,207.74	\$125,959.27	\$150,473.16	\$57,000.51	\$66,477.60
DAM LOSSES	(\$144,083.52)	(\$164,736.15)	(\$167,420.16)	(\$237,247.64)	(\$281,531.12)	(\$107,807.72)	(\$130,663.28)
BALANCING ENERGY	\$6,541.30	\$3,766.20	\$3,986.67	\$6,271.47	(\$14,257.29)	\$645.06	(\$2,775.59)
BALANCING LOSSES	(\$20,731.75)	(\$22,290.66)	(\$6,563.28)	(\$17,015.50)	(\$8,253.66)	(\$5,167.16)	(\$2,251.36)
BALANCING CONGESTION	\$203,380.43	\$43,826.59	\$58,249.56	\$2,195.80	\$2,728.13	(\$25,666.05)	(\$12,009.46)
FINANCIAL IMPACT CHARGE	\$0.00	\$0.00	\$0.00	\$0.00	\$0.00	\$0.00	(\$0.76)
	10	11	12	13	14	15	16
DAM ENERGY	\$95,669.12	\$88,417.60	\$110,581.84	\$121,838.94	\$126,054.15	\$64,138.23	\$51,501.61
DAM LOSSES	(\$182,525.63)	(\$170,296.49)	(\$212,638.01)	(\$232,392.20)	(\$244,263.53)	(\$120,385.70)	(\$98,256.04)
BALANCING ENERGY	(\$13,909.30)	\$4,243.84	(\$9,488.36)	\$13,849.23	\$10,252.30	\$6,720.14	\$8,023.15
BALANCING LOSSES	(\$24,379.45)	(\$15,259.72)	(\$21,141.39)	(\$18,322.84)	(\$9,851.09)	(\$22,385.10)	(\$21,823.16)
BALANCING CONGESTION	(\$36,004.63)	(\$64,296.09)	(\$65,293.39)	\$134,947.61	(\$81,489.44)	(\$15,350.41)	\$2,291.25
FINANCIAL IMPACT CHARGE	\$0.00	\$0.00	\$0.00	\$0.00	\$0.00	\$0.00	\$0.00
	17	18	19	20	21	22	23
DAM ENERGY	\$115,305.42	\$138,334.00	\$200,320.44	\$227,749.09	\$208,976.34	\$160,405.85	\$153,194.86
DAM LOSSES	(\$215,696.71)	(\$265,961.68)	(\$390,327.45)	(\$439,621.05)	(\$409,762.12)	(\$308,032.05)	(\$290,843.24)
BALANCING ENERGY	(\$13,369.76)	(\$17,775.87)	(\$32,790.96)	(\$28,026.01)	(\$10,666.02)	\$899.60	(\$6,536.55)
BALANCING LOSSES	(\$10,665.94)	(\$6,227.32)	(\$10,625.72)	\$11,464.31	(\$8,618.82)	(\$6,422.19)	(\$10,463.56)
BALANCING CONGESTION	\$111,475.20	(\$48,270.25)	(\$10,601.04)	\$5,576.47	(\$1,374.02)	\$231,652.89	(\$9,193.97)
FINANCIAL IMPACT CHARGE	\$0.00	\$0.00	\$0.00	\$0.00	\$0.00	\$0.00	\$0.00
	24	25	26	27	28	29	30
DAM ENERGY	\$146,267.21	\$145,572.46	\$190,433.53	\$254,353.24	\$174,839.08	\$138,809.83	\$168,778.19
DAM LOSSES	(\$284,324.25)	(\$278,526.88)	(\$353,235.10)	(\$370,817.05)	(\$326,209.68)	(\$256,587.69)	(\$316,783.18)
BALANCING ENERGY	\$12,431.49	(\$8,746.38)	(\$24,813.41)	(\$60,714.41)	\$11,561.11	\$14,184.04	(\$1,453.78)
BALANCING LOSSES	(\$5,642.87)	(\$4,407.96)	(\$7,838.35)	(\$13,694.51)	(\$16,273.03)	(\$12,039.99)	(\$10,752.03)
BALANCING CONGESTION	(\$39,899.09)	(\$55,004.12)	\$387,694.62	(\$68,487.92)	(\$4,766.60)	(\$17,272.01)	\$7,416.08
FINANCIAL IMPACT CHARGE	\$0.00	\$0.00	\$0.00	\$0.00	\$0.00	\$0.00	\$0.00
	31						
DAM ENERGY	\$178,669.10						
DAM LOSSES	(\$340,869.59)						
BALANCING ENERGY	\$3,306.84						
BALANCING LOSSES	(\$6,738.46)						
BALANCING CONGESTION	(\$19,899.60)						
FINANCIAL IMPACT CHARGE	\$0.00						



SETTLEMENTS REPORT  
 May 2021 Settlement Adjustment  
 October 7, 2021

4-Month Settlement Adjustment – Market Residuals Analysis

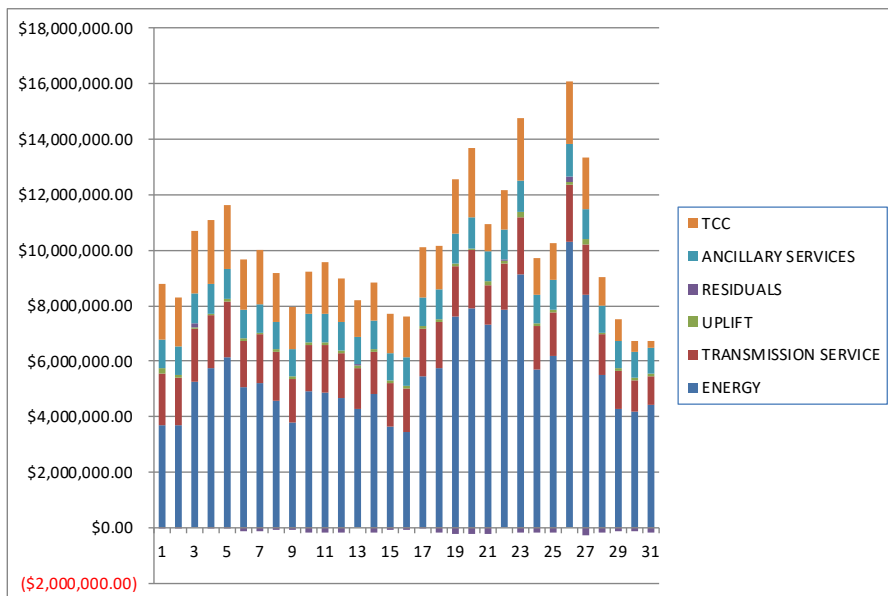
	MONDAY	TUESDAY	WEDNESDAY	THURSDAY	FRIDAY	SATURDAY	SUNDAY
						1	2
DAM ENERGY						\$26,413.37	\$32,850.41
DAM LOSSES						(\$49,103.57)	(\$60,814.35)
BALANCING ENERGY						\$4,460.97	\$7,317.52
BALANCING LOSSES						(\$5,366.71)	(\$12,981.79)
BALANCING CONGESTION						\$3,342.19	(\$18,263.00)
FINANCIAL IMPACT CHARGE						\$0.00	\$0.00
	3	4	5	6	7	8	9
DAM ENERGY	\$76,422.24	\$87,603.64	\$89,207.75	\$125,959.27	\$150,473.16	\$57,000.50	\$66,477.60
DAM LOSSES	(\$144,083.52)	(\$164,736.15)	(\$167,420.17)	(\$237,247.64)	(\$281,531.12)	(\$107,807.72)	(\$130,663.28)
BALANCING ENERGY	\$6,465.10	\$3,738.53	\$3,997.57	\$6,195.64	(\$14,228.20)	\$1,022.09	(\$2,833.81)
BALANCING LOSSES	(\$20,585.92)	(\$22,144.55)	(\$6,525.27)	(\$16,865.67)	(\$8,118.27)	(\$5,153.62)	(\$2,171.81)
BALANCING CONGESTION	\$204,572.41	\$43,339.62	\$57,780.93	\$1,795.50	\$2,720.52	(\$25,710.07)	(\$12,481.38)
FINANCIAL IMPACT CHARGE	\$0.00	\$0.00	\$0.00	\$0.00	\$0.00	\$0.00	(\$0.76)
	10	11	12	13	14	15	16
DAM ENERGY	\$95,669.12	\$88,417.60	\$110,581.84	\$121,838.93	\$126,054.15	\$64,138.23	\$51,501.61
DAM LOSSES	(\$182,525.64)	(\$170,296.49)	(\$212,638.01)	(\$232,392.19)	(\$244,263.54)	(\$120,385.70)	(\$98,256.04)
BALANCING ENERGY	(\$13,937.43)	\$4,203.19	(\$9,598.89)	\$15,308.09	\$10,298.95	\$6,478.34	\$7,964.78
BALANCING LOSSES	(\$24,271.48)	(\$15,188.50)	(\$21,022.49)	(\$18,035.55)	(\$9,779.01)	(\$22,318.02)	(\$21,678.92)
BALANCING CONGESTION	(\$36,247.68)	(\$64,937.17)	(\$65,893.39)	\$135,104.58	(\$81,930.31)	(\$11,470.37)	\$6,370.00
FINANCIAL IMPACT CHARGE	\$0.00	\$0.00	\$0.00	\$0.00	\$0.00	\$0.00	\$0.00
	17	18	19	20	21	22	23
DAM ENERGY	\$115,305.41	\$138,334.01	\$200,320.43	\$227,749.09	\$208,976.34	\$160,405.84	\$153,194.86
DAM LOSSES	(\$215,696.72)	(\$265,961.68)	(\$390,327.45)	(\$439,621.06)	(\$409,762.13)	(\$308,032.05)	(\$290,843.24)
BALANCING ENERGY	(\$13,429.77)	(\$17,742.67)	(\$32,638.46)	(\$27,934.28)	(\$10,956.65)	\$757.04	(\$6,460.71)
BALANCING LOSSES	(\$10,538.28)	(\$6,105.06)	(\$10,388.83)	\$11,633.89	(\$8,488.54)	(\$6,415.07)	(\$10,397.67)
BALANCING CONGESTION	\$111,339.33	(\$49,392.70)	(\$10,430.66)	\$5,334.15	(\$2,560.81)	\$231,269.79	(\$8,742.20)
FINANCIAL IMPACT CHARGE	\$0.00	\$0.00	\$0.00	\$0.00	\$0.00	\$0.00	\$0.00
	24	25	26	27	28	29	30
DAM ENERGY	\$146,267.21	\$145,572.46	\$190,433.53	\$254,353.24	\$174,839.08	\$138,809.83	\$168,778.19
DAM LOSSES	(\$284,324.26)	(\$278,526.87)	(\$353,235.09)	(\$370,817.05)	(\$326,209.69)	(\$256,587.68)	(\$316,783.18)
BALANCING ENERGY	\$12,328.27	(\$26,360.27)	(\$45,017.39)	(\$60,647.48)	\$11,314.77	\$13,588.13	(\$1,273.41)
BALANCING LOSSES	(\$5,561.97)	(\$4,722.00)	(\$7,978.18)	(\$13,527.14)	(\$16,140.46)	(\$12,170.77)	(\$10,735.34)
BALANCING CONGESTION	(\$41,323.66)	(\$56,797.87)	\$389,751.51	(\$68,316.95)	(\$4,911.06)	(\$18,296.87)	\$7,386.56
FINANCIAL IMPACT CHARGE	\$0.00	\$0.00	\$0.00	\$0.00	\$0.00	\$0.00	\$0.00
	31						
DAM ENERGY	\$178,669.10						
DAM LOSSES	(\$340,869.59)						
BALANCING ENERGY	\$3,203.69						
BALANCING LOSSES	(\$6,715.88)						
BALANCING CONGESTION	(\$20,120.05)						
FINANCIAL IMPACT CHARGE	\$0.00						



SETTLEMENTS REPORT  
 May 2021 Settlement Adjustment  
 October 7, 2021

Initial Settlement – Market Costs Analysis

	MONDAY	TUESDAY	WEDNESDAY	THURSDAY	FRIDAY	SATURDAY	SUNDAY
						1	2
ENERGY						\$3,714,435.71	\$3,676,270.38
TRANSMISSION SERVICE						\$1,853,470.19	\$1,729,682.47
UPLIFT						\$177,168.74	\$103,578.17
RESIDUALS						(\$19,913.14)	(\$51,480.18)
ANCILLARY SERVICES						\$1,034,844.52	\$999,384.20
TCC						\$1,979,161.96	\$1,800,656.53
	3	4	5	6	7	8	9
ENERGY	\$5,272,281.83	\$5,759,383.82	\$6,163,303.37	\$5,075,249.62	\$5,231,984.23	\$4,564,162.87	\$3,800,350.49
TRANSMISSION SERVICE	\$1,893,918.14	\$1,905,740.87	\$1,995,126.60	\$1,663,590.87	\$1,726,261.80	\$1,790,193.90	\$1,572,105.37
UPLIFT	\$58,544.17	\$60,047.23	\$77,380.52	\$96,631.72	\$86,439.77	\$90,235.02	\$104,193.43
RESIDUALS	\$121,528.70	(\$51,830.38)	(\$22,539.47)	(\$119,836.52)	(\$150,840.78)	(\$80,995.36)	(\$81,222.85)
ANCILLARY SERVICES	\$1,071,646.34	\$1,077,666.90	\$1,062,533.54	\$1,001,899.98	\$999,449.01	\$974,242.71	\$971,216.20
TCC	\$2,251,267.70	\$2,262,351.60	\$2,313,273.63	\$1,834,493.73	\$1,974,993.28	\$1,751,647.86	\$1,479,296.96
	10	11	12	13	14	15	16
ENERGY	\$4,937,586.62	\$4,871,328.10	\$4,673,957.08	\$4,279,864.60	\$4,835,735.17	\$3,660,937.58	\$3,424,191.05
TRANSMISSION SERVICE	\$1,657,488.28	\$1,718,581.67	\$1,589,439.26	\$1,461,536.46	\$1,497,996.26	\$1,539,668.95	\$1,589,831.22
UPLIFT	\$82,043.77	\$95,709.12	\$123,784.76	\$122,749.87	\$110,893.77	\$118,894.22	\$107,868.62
RESIDUALS	(\$161,149.89)	(\$157,190.86)	(\$197,979.31)	\$19,920.74	(\$199,297.61)	(\$87,262.84)	(\$58,263.19)
ANCILLARY SERVICES	\$1,038,131.85	\$1,029,946.71	\$1,013,155.46	\$1,002,000.38	\$997,428.55	\$985,864.02	\$1,000,485.06
TCC	\$1,503,377.82	\$1,853,304.27	\$1,600,547.20	\$1,301,946.21	\$1,396,015.56	\$1,414,065.94	\$1,464,669.42
	17	18	19	20	21	22	23
ENERGY	\$5,450,592.70	\$5,725,511.59	\$7,612,834.43	\$7,907,793.23	\$7,330,751.14	\$7,874,044.95	\$9,115,381.32
TRANSMISSION SERVICE	\$1,719,667.16	\$1,663,979.62	\$1,825,721.38	\$2,105,295.08	\$1,415,598.67	\$1,632,173.87	\$2,060,859.54
UPLIFT	\$103,776.98	\$136,664.91	\$75,614.22	\$67,070.49	\$131,296.14	\$103,245.96	\$215,352.41
RESIDUALS	(\$12,951.79)	(\$199,901.12)	(\$244,024.73)	(\$222,857.19)	(\$221,444.64)	\$78,494.10	(\$163,842.46)
ANCILLARY SERVICES	\$1,037,660.00	\$1,049,666.28	\$1,100,662.59	\$1,099,409.42	\$1,060,452.42	\$1,040,561.90	\$1,126,936.88
TCC	\$1,799,904.04	\$1,594,764.57	\$1,940,810.74	\$2,504,638.17	\$1,012,368.56	\$1,419,291.00	\$2,248,970.12
	24	25	26	27	28	29	30
ENERGY	\$5,700,568.30	\$6,179,015.31	\$10,317,099.41	\$8,413,247.50	\$5,517,899.77	\$4,284,500.48	\$4,196,445.42
TRANSMISSION SERVICE	\$1,547,587.14	\$1,560,523.53	\$2,052,087.91	\$1,813,203.04	\$1,464,799.22	\$1,348,239.62	\$1,113,804.99
UPLIFT	\$101,983.32	\$105,968.37	\$85,518.75	\$152,482.05	\$60,494.63	\$107,196.15	\$90,475.19
RESIDUALS	(\$171,167.51)	(\$201,112.88)	\$192,241.29	(\$259,360.65)	(\$160,849.12)	(\$132,905.82)	(\$152,794.72)
ANCILLARY SERVICES	\$1,039,542.25	\$1,067,803.65	\$1,161,761.94	\$1,097,292.46	\$975,596.73	\$972,797.47	\$957,784.86
TCC	\$1,307,434.13	\$1,359,583.07	\$2,265,041.87	\$1,841,144.11	\$1,011,935.37	\$813,690.54	\$388,108.01
	31						
ENERGY	\$4,434,916.71						
TRANSMISSION SERVICE	\$1,020,260.84						
UPLIFT	\$111,401.66						
RESIDUALS	(\$185,531.71)						
ANCILLARY SERVICES	\$932,709.32						
TCC	\$210,477.14						



SETTLEMENTS REPORT  
 May 2021 Settlement Adjustment  
 October 7, 2021

4-Month Settlement Adjustment – Market Costs Analysis

	MONDAY	TUESDAY	WEDNESDAY	THURSDAY	FRIDAY	SATURDAY	SUNDAY
ENERGY						1	2
TRANSMISSION SERVICE						\$3,712,693.87	\$3,673,743.15
UPLIFT						\$1,851,541.87	\$1,727,494.65
RESIDUALS						\$177,035.49	\$103,578.09
ANCILLARY SERVICES						(\$20,253.75)	(\$51,891.21)
TCC						\$1,037,417.48	\$1,005,506.42
						\$2,005,348.69	\$1,823,128.59
	3	4	5	6	7	8	9
ENERGY	\$5,263,148.95	\$5,751,545.96	\$6,153,888.94	\$5,067,895.78	\$5,226,539.97	\$4,558,217.90	\$3,795,313.38
TRANSMISSION SERVICE	\$1,891,570.45	\$1,903,496.66	\$1,993,071.06	\$1,661,677.24	\$1,724,526.21	\$1,788,157.42	\$1,570,069.84
UPLIFT	\$58,545.31	\$60,050.36	\$77,494.69	\$96,705.94	\$86,473.15	\$90,234.63	\$104,191.44
RESIDUALS	\$122,790.31	(\$52,198.91)	(\$22,959.19)	(\$120,162.90)	(\$150,683.91)	(\$80,648.82)	(\$81,673.44)
ANCILLARY SERVICES	\$1,084,268.72	\$1,090,948.98	\$1,072,325.59	\$1,021,492.68	\$1,019,353.55	\$1,004,097.22	\$983,271.36
TCC	\$2,267,112.72	\$2,277,586.70	\$2,332,099.18	\$1,843,625.50	\$1,983,936.13	\$1,750,473.62	\$1,495,896.10
	10	11	12	13	14	15	16
ENERGY	\$4,929,641.38	\$4,864,290.66	\$4,666,375.85	\$4,270,635.14	\$4,828,402.54	\$3,649,593.23	\$3,411,850.86
TRANSMISSION SERVICE	\$1,655,659.63	\$1,716,789.86	\$1,587,534.70	\$1,459,408.79	\$1,495,634.62	\$1,536,977.05	\$1,587,242.68
UPLIFT	\$82,042.70	\$95,707.57	\$123,821.06	\$122,749.71	\$110,893.57	\$118,893.90	\$107,869.08
RESIDUALS	(\$161,313.11)	(\$157,801.37)	(\$198,570.94)	\$21,823.86	(\$199,619.76)	(\$83,557.52)	(\$54,098.57)
ANCILLARY SERVICES	\$1,050,962.40	\$1,041,734.82	\$1,028,359.56	\$1,017,999.12	\$1,014,449.59	\$995,030.88	\$1,009,561.11
TCC	\$1,519,309.44	\$1,870,308.43	\$1,614,065.09	\$1,314,519.63	\$1,407,439.67	\$1,433,097.24	\$1,483,845.25
	17	18	19	20	21	22	23
ENERGY	\$5,439,961.07	\$5,713,738.30	\$7,599,200.25	\$7,899,042.21	\$7,324,602.99	\$7,862,123.74	\$9,103,858.97
TRANSMISSION SERVICE	\$1,717,532.07	\$1,663,077.45	\$1,823,511.94	\$2,103,246.74	\$1,414,784.29	\$1,630,315.84	\$2,059,099.05
UPLIFT	\$103,727.78	\$136,665.78	\$75,615.51	\$67,069.21	\$131,281.55	\$103,242.90	\$215,126.88
RESIDUALS	(\$13,020.03)	(\$200,868.10)	(\$243,464.97)	(\$222,838.21)	(\$222,791.79)	\$77,985.55	(\$163,248.96)
ANCILLARY SERVICES	\$1,053,442.36	\$1,069,574.43	\$1,118,803.73	\$1,119,212.89	\$1,090,261.81	\$1,070,519.70	\$1,152,789.49
TCC	\$1,812,707.49	\$1,603,488.45	\$1,951,178.01	\$2,513,369.39	\$1,011,439.91	\$1,418,055.12	\$2,251,932.79
	24	25	26	27	28	29	30
ENERGY	\$5,691,323.08	\$6,191,227.15	\$10,318,208.93	\$8,402,607.55	\$5,515,717.76	\$4,291,319.58	\$4,189,881.20
TRANSMISSION SERVICE	\$1,545,745.39	\$1,560,815.94	\$2,052,002.98	\$1,811,502.99	\$1,463,287.89	\$1,347,479.90	\$1,111,583.00
UPLIFT	\$113,086.33	\$105,969.02	\$85,698.93	\$152,515.03	\$60,488.66	\$110,136.95	\$90,474.61
RESIDUALS	(\$172,614.41)	(\$220,834.55)	\$173,954.38	(\$258,955.38)	(\$161,107.36)	(\$134,657.36)	(\$152,627.18)
ANCILLARY SERVICES	\$1,060,045.92	\$1,085,755.10	\$1,162,920.52	\$1,129,447.55	\$1,043,001.33	\$997,722.91	\$983,108.50
TCC	\$1,315,576.30	\$1,371,809.98	\$2,293,939.27	\$1,837,840.71	\$973,545.39	\$818,113.17	\$391,320.51
	31						
ENERGY	\$4,431,011.57						
TRANSMISSION SERVICE	\$1,018,206.08						
UPLIFT	\$111,402.84						
RESIDUALS	(\$185,832.73)						
ANCILLARY SERVICES	\$959,649.05						
TCC	\$212,198.55						

